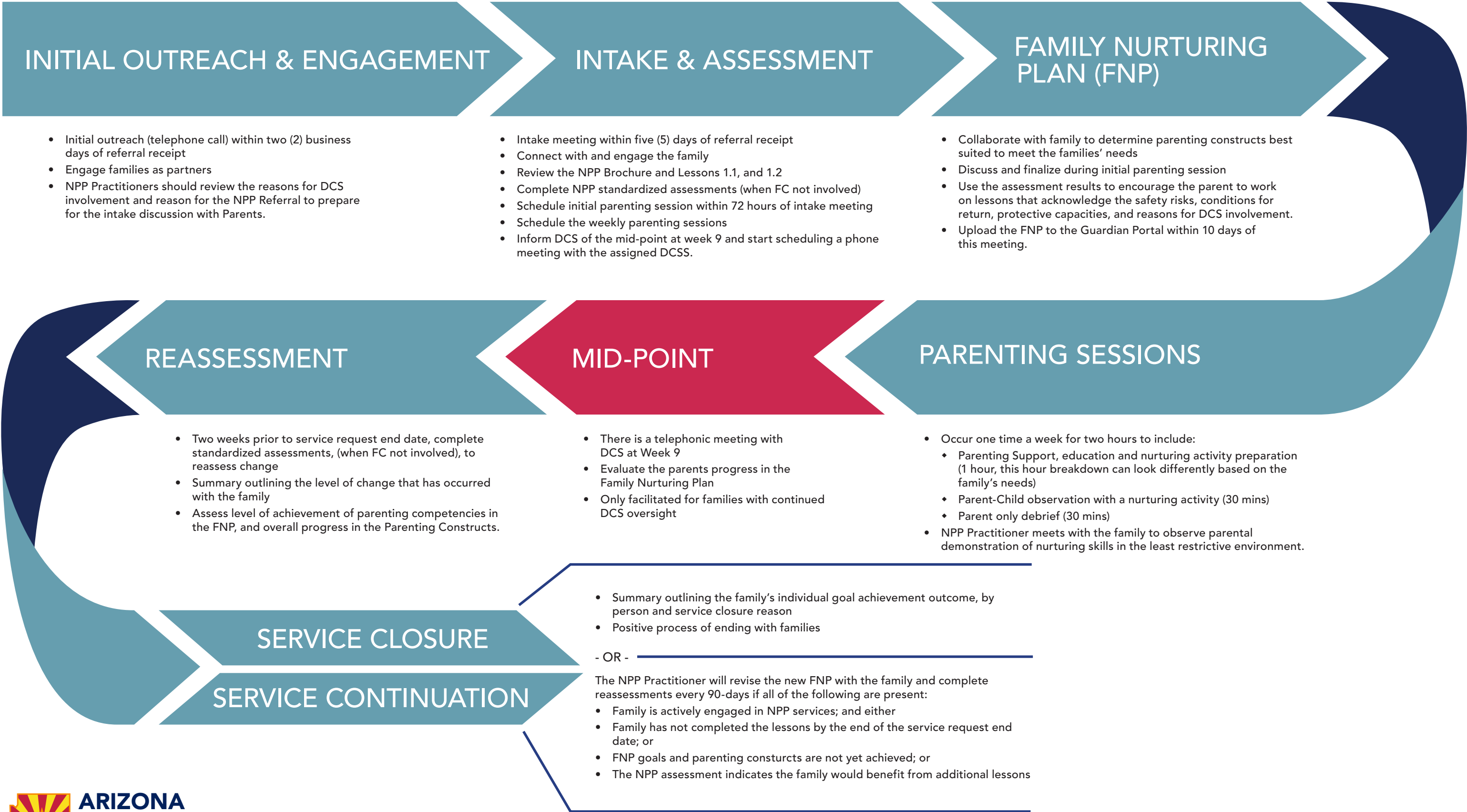


NURTURING PARENTING PROGRAM (NPP)



INITIAL OUTREACH & ENGAGEMENT

- Initial outreach (telephone call) within two (2) business days of referral receipt
- Engage families as partners
- NPP Practitioners should review the reasons for DCS involvement and reason for the NPP Referral to prepare for the intake discussion with Parents.

INTAKE & ASSESSMENT

- Intake meeting within five (5) days of referral receipt
- Connect with and engage the family
- Review the NPP Brochure and Lessons 1.1, and 1.2
- Complete NPP standardized assessments (when FC not involved)
- Schedule initial parenting session within 72 hours of intake meeting
- Schedule the weekly parenting sessions
- Inform DCS of the mid-point at week 9 and start scheduling a phone meeting with the assigned DCSS.

FAMILY NURTURING PLAN (FNP)

- Collaborate with family to determine parenting constructs best suited to meet the families' needs
- Discuss and finalize during initial parenting session
- Use the assessment results to encourage the parent to work on lessons that acknowledge the safety risks, conditions for return, protective capacities, and reasons for DCS involvement.
- Upload the FNP to the Guardian Portal within 10 days of this meeting.

REASSESSMENT

- Two weeks prior to service request end date, complete standardized assessments, (when FC not involved), to reassess change
- Summary outlining the level of change that has occurred with the family
- Assess level of achievement of parenting competencies in the FNP, and overall progress in the Parenting Constructs.

MID-POINT

- There is a telephonic meeting with DCS at Week 9
- Evaluate the parents progress in the Family Nurturing Plan
- Only facilitated for families with continued DCS oversight

PARENTING SESSIONS

- Occur one time a week for two hours to include:
 - ♦ Parenting Support, education and nurturing activity preparation (1 hour, this hour breakdown can look differently based on the family's needs)
 - ♦ Parent-Child observation with a nurturing activity (30 mins)
 - ♦ Parent only debrief (30 mins)
- NPP Practitioner meets with the family to observe parental demonstration of nurturing skills in the least restrictive environment.

SERVICE CLOSURE

- Summary outlining the family's individual goal achievement outcome, by person and service closure reason
- Positive process of ending with families

SERVICE CONTINUATION

- OR -
- The NPP Practitioner will revise the new FNP with the family and complete reassessments every 90-days if all of the following are present:
- Family is actively engaged in NPP services; and either
 - Family has not completed the lessons by the end of the service request end date; or
 - FNP goals and parenting constructs are not yet achieved; or
 - The NPP assessment indicates the family would benefit from additional lessons

NURTURING PARENTING PROGRAM (NPP)

