

CHILD WELFARE REPORTING REQUIREMENTS

SEMI-ANNUAL REPORT

FOR THE PERIOD OF

OCTOBER 1, 2006 THROUGH MARCH 31, 2007

ARIZONA REVISED STATUTES

[LAWS 2006, CHAPTER 203]

ARIZONA DEPARTMENT OF ECONOMIC SECURITY

DIVISION OF CHILDREN, YOUTH AND FAMILIES

ADMINISTRATION FOR CHILDREN, YOUTH AND FAMILIES

CHILD WELFARE REPORTING REQUIREMENTS

Arizona Revised Statute §8-526, as amended by Laws 2006, Chapter 203 requires the Arizona Department of Economic Security (DES) to compile information and produce a semi- annual report for the periods ending on March 31 and September 30 of each year regarding Child Welfare Services, including Child Protective Services (CPS). This report which is submitted in satisfaction of that mandate is for the semi-annual reporting period beginning on October 1, 2006 and ending on March 31, 2007.

TABLE OF CONTENTS

(Reporting period: October 1, 2006 through March 31, 2007)

	<u>Page</u>
EXECUTIVE SUMMARY	3
SYNOPSIS OF MAJOR DATA POINTS	7
SEMI-ANNUAL COMPARISONS	10
REPORTS OF CHILD ABUSE AND NEGLECT	
Semi-Annual comparisons of abuse and neglect – statewide data	11
Reports by category of child maltreatment – statewide data	11
Sample communications to hotline, not meeting definition of report	13
Reports by risk level- statewide data	14
Number of reports received by risk level – county specific data	15
Number of reports received by maltreatment – county specific data	16
Reports not responded to, by risk level- county specific data	18
INVESTIGATIONS	
Investigations by risk level and county– county specific data	19
Investigations by type of child maltreatment – county specific data	20
Investigations by risk level and county – substantiated reports	22
Investigations by type of child maltreatment– substantiated reports	23
Investigations by risk level and county – proposed substantiated reports	25
Investigations by type of child maltreatment– proposed substantiated reports	26
Investigations by risk level and county – unsubstantiated reports	28
Investigations by type of child maltreatment– unsubstantiated reports	29
Investigations by risk level and county– investigation still open	31
Investigations by type of child maltreatment– investigation still open	32
Reports by county where removal occurred	34
CHILDREN IN OUT-OF-HOME CARE	
New entries by county – children under 18 years voluntary placement	36
New entries by county	38
All children in care by age and ethnicity	42-43

TABLE OF CONTENTS (CONTINUED)*(Reporting period: October 1, 2006 through March 31, 2007)*

	<u>Page</u>
All children in care by case plan goal and placement type	43-44
All children in care by placement type and age	45
Children in shelter or receiving homes for more than 21 days	46
Children in out-of-home care by length of time in care	46
Children in out-of-home care by legal status	47
Children receiving required visitation	48
 FOSTER HOME LICENSING, CLOSURES, AND VISITATIONS	
Foster homes licensed	49
Foster homes closed and reason for closure	49
Child bed spaces available	49
Number of foster homes receiving the required visitation	50
 CHILDREN LEAVING OUT-OF-HOME CARE	
Semi-Annual comparisons of total number leaving care – For all reasons	51
Total number leaving care	52
Total number leaving care – For reason of reunification with parents	53
Total number leaving care – For reason of living with other relatives	54
Total number leaving care – For reason of adoption	55
Total number leaving care – For reason of guardianship	56
Total number leaving care – For reason of reaching age of majority	57
Total number leaving care – For reason of transfer to another agency	58
Total number leaving care – For reason of runaway	59
Total number leaving care – For reason of death of child	60
Total number leaving care - by cause of death	61
Total number for reason of death of child - with alleged abuse	61
 CHILDREN WITH CASE PLAN GOALS OF ADOPTION	
Number of children with a petition for termination of parental rights	62
Number of children with case plan goals of adoption by age	63
Number of children with case plan goals of adoption by ethnicity	63
Number of children with case plan goals of adoption by legal status	64
Number of children– length of time from change of case plan goal of adoption to adoptive placement	64
 ADOPTIVE SERVICES	
Number of children with a finalized adoption by average length of time in out-of-home placement before adoptive placement	65
Number of children with a finalized adoption by average length of time in adoptive placement before the final order of adoption	66

EXECUTIVE SUMMARY

The Arizona Department of Economic Security/Division of Children, Youth and Families (DES/DCYF) publishes this semi-annual statistical bulletin in compliance with state law (A.R.S. §8-526). This report is intended to provide its readers an opportunity to review DCYF's performance on a number of key performance indicators.

For the past several years, DES/DCYF has been on a path of continuous improvement focused on enhancing child safety, well-being and permanency. Our actions and strategies are deeply rooted in the core belief that children need safe, strong families in order to succeed in life.

In September 2005, the Division released *Strengthening Families – A Blueprint for Realigning Arizona's Child Welfare System*. The *Blueprint* outlined ambitious goals and key strategies for (1) enhancing the ability of parents to create safe, stable and nurturing home environments; (2) strengthening families so children can remain safely in their homes; (3) finding more permanent homes more quickly for children; and (4) placing children in the least restrictive, most family-like setting possible.

The data contained in this *Semi-Annual Report*, when combined with other information available in the Department, demonstrate the significant progress made in many of the Division's focus areas and provide valuable insight into areas where further study and analysis is needed in order to take additional actions and achieve future successes.

The Division has shown improvement in child safety, well-being and permanency in the past few years. Some of the improvements demonstrated by the data in this report include: reducing the number of children, particularly the youngest children, placed in group homes shelters; reducing the number of children in temporary shelters longer than 21 days; increasing the number of children in foster care who receive the required monthly visit from their case manager; increasing the number of parents with children in foster care who have the required monthly face-to-face contact with their case manager; increasing the number of children and families receiving services safely in their own homes; and, increasing the number of children finding safe, permanent homes through guardianship and adoption.

Fewer young children in group homes and shelters. Between March 2005 and March 2007, the emphasis on serving children and families safely in their own homes and the Division's success in placing children with relatives or in foster homes has resulted in a **21 percent decrease** in the overall number of children (all ages) served in group homes and shelters. In the same time frame, there has been a **78 percent decrease** in the number of children under four years old in shelter care and an **85 percent decrease** in the number of children under seven years old placed in group homes.

A review of cases indicates that the primary reasons that young children are being served in group homes or shelters is to keep sibling groups together, to best meet the child's medical or behavioral needs, or as a temporary placement when no appropriate relative or foster home is available. For example, of the 10 children under seven years old who were living in group homes at the end of March 2007, nine children were in the group home to avoid their being separated from their siblings.

Decreasing the amount of time children spend in shelter care. While placing children in shelters is sometimes appropriate to their immediate best interests, the Division strives to move the children to another placement within 21 days. Since March 2005, the number of children in shelter for longer than 21 days has **decreased by 37 percent**. The Division, along with its foster parent recruitment contractors statewide, will continue to focus on seeking foster homes that are capable of serving large sibling groups in the effort to further reduce the use of group homes and shelters as a placement for young children.

Increasing the number of children in out of home care who receive monthly visits from their case manager and the number of parents with children in out of home care who have monthly face-to-face contact with their case manager. In addition to being seen regularly by treatment and service providers, children in out of home care must receive monthly visits from their case managers and their parents are required to have monthly face-to-face contact with the case managers. This has been an area that the Division has historically struggled with, but this latest data shows that monthly visitation to children and parents is at **the highest level in four years**, with children receiving the required visitation in 78 percent of cases and parents receiving the required visitation on 63 percent of cases. Workload – including caseload size and timely documentation – has been identified as the most significant factor affecting the Division staff’s ability to complete monthly visitations. This area of performance will continue to be a focus of our improvement efforts in the coming months.

Increasing the number of children served safely in their own homes. The Division has prevented many children from coming into out-of-home care by providing services to children safely in their own homes. Under contract with community-based agencies statewide, plans are put in place that include intensive services and regular monitoring of child safety and family progress. This program provides a wide range of services including, but not limited to: crisis intervention counseling; family assessment, goal setting and case planning; individual, family, and marital therapy; conflict resolution and anger management skill development; communication and negotiation skill development; problem solving and stress management skill development; home management and nutrition education; job readiness training; development of linkages with community resources to serve a variety of social needs; behavioral management/modification; and, facilitation of family meetings. This program also assists families to access services such as substance abuse treatment, housing, child care, and many others. Services are family-centered, comprehensive, coordinated, community based, accessible, and culturally responsive. The integrated services model includes two service levels, intensive and moderate, which are provided based upon the needs of the child and family. Between March 2005 and March 2007, the Division has increased the number of children served safely in their own homes by **4 percent**. Since July 2003, the number of children served safely in their own homes has **increased by 67 percent**.

Increasing permanency for children through guardianship and adoption. In many cases when the children cannot return safely to their parents, DCYF helps children find safe, permanent homes through guardianship or adoption. Over the past two years, the number of finalized adoptions has **increased by 62 percent** and the total number of children in permanent guardianships has **increased by 54 percent**.

Continued success in placing children in family-like settings. In addition to the improvements noted above, the latest data also demonstrate the Division’s continued success in placing children in out-of-home care in the most family-like setting possible – a key factor in child well-being. The number of children who are in out-of-home care and are placed either with relatives or with foster parents has been above 70 percent since March 2005, reaching **almost 76 percent** in this last reporting period.

Decrease in the number of children in out of home care. As indicated earlier, the data in this *Semi-Annual Report*, when examined over time, also point to areas where additional monitoring is necessary in order to identify whether additional action is required. The number of children in out-of-home care increased at an annual rate as high as 19 percent in fiscal year 2004. Due to various strategies implemented by the Division, the growth had slowed to less than 2 percent in fiscal year 2006 and has now started to decline. In fact, since September 2005, the number of children in out-of-home care has **decreased by almost 1.3 percent**.

Although this is a notable improvement, this decrease has been slower than expected, partially because of the time needed to build the capacity of the child welfare system to serve families in their own homes.

Again, this data needs to be examined much more thoroughly in order to determine whether additional strategies are necessary in order to further safely reduce the number of children in out-of-home care.

Strategies expected to safely reduce the number of children in out-of-home care already are being implemented. Arizona is working to embed the Family to Family initiative into Arizona's child welfare practice. This nationwide child welfare initiative, designed by the Annie E. Casey Foundation, provides principles, strategies, goals, and tools to achieve better outcomes for children and families.

The four core strategies that are the hallmark of Family to Family include:

1. *Recruitment, Development and Support of Resource Families* – Finding and maintaining kinship and foster families who can support children and families in their own neighborhoods.
2. *Building Community Partnerships* – Establishing relationships with a wide range of community partners in neighborhoods where referral rates to the child welfare system are high and collaborating to create an environment that supports families involved in the child welfare system. These collaborations will lead to enhanced support to at-risk families, as well, preventing the need for removal of the children.
3. *Team Decision Making (TDM)* – Involving resource families, youth, parents, community partners and case managers in all placement decisions to ensure a network of support for the children and for the adults who care for them. In many cases, these TDM meetings identify supportive resources for the family that prevent the need to remove a child from the home, or that allow the child to be reunified safely with their family more quickly.
4. *Self Evaluation* – Collecting and using data about the child and family outcomes to find out where there is progress and where there needs to be change.

Number of new reports decreasing, workload is not. The *Semi-Annual Report* also includes information about the number of new reports received for each six-month period since March 2005, and shows a 12 percent decrease in abuse or neglect reports over the past two years. It is difficult to say what all of the contributing factors to this trend may be, given the highly complex nature of child abuse and child welfare work. One of those factors may be the increased emphasis on prevention that has been a cornerstone of child welfare improvement efforts. For example, Healthy Families, a voluntary program that serves families at risk of child abuse or neglect with wrap-around services that last from the child's birth through age five, has been expanded and now **serves almost 57 percent more families** than two years ago.

The decreased number of reports has not, however, meant a decrease in the workload of CPS specialists who investigate abuse or neglect allegations or who provide on-going support to children and families. In response to measures passed during the 2003 Special Legislative Session on CPS, a caseload standard was developed specifically for Arizona's child welfare system. Analysis done by DCYF shows that CPS specialists are carrying caseloads that are 22 percent to 37 percent above the Arizona caseload standard. The Division is not currently funded for staffing to meet the Arizona caseload standards; doing so would require an additional 220 positions in CPS.

In addition, improvements to child welfare practice – including a more effective process of assessing child safety and risk and new strategies for engaging parents and extended family members in decisions made in the best interests of children – also have added to each CPS specialists' workload. As CPS specialists become used to these new processes, the impact to their workload will decrease. The Division continues to explore strategies for helping CPS specialists more efficiently complete the tasks necessary to protect children and strengthen families.

The Division is committed to the continued use of data as one of our core sources of information about our successes and our future challenges. Thoughtful data analysis, when combined with nationally proven best practice and input from families and community partners statewide will ensure improved outcomes for the children and families served by the child welfare system throughout Arizona.

SYNOPSIS OF MAJOR DATA POINTS

The Arizona Department of Economic Security/Division of Children, Youth and Families (DES/DCYF) publishes this semi-annual statistical bulletin in compliance with state law (A.R.S. §8-526). This report contains information for the six-month period from October 1, 2006 to March 31, 2007.

Additional information about the data contained in the report accompanies many of the charts and graphs included in its pages. However, for the reader's convenience, many of the major areas of the report are summarized in this synopsis, along with additional background or clarifying information.

CALLS RECEIVED BY THE STATEWIDE CPS HOTLINE

During this reporting period, the statewide Child Abuse Hotline received 16,612 reports of child maltreatment. One hundred ninety (190) of those reports were within the jurisdiction of the military or tribal governments and were transferred to those jurisdictions. The remaining 16,422 reports were within the jurisdiction of Child Protective Services (CPS), and all of the reports were assigned for investigation.

During this reporting period, the Hotline also received 13,357 calls that did not meet the criteria for a new CPS report. These calls included requests for information or referrals to services, current case questions, and allegations more appropriate for a response by law enforcement. Approximately 71 percent of the calls dealt with concerns for a child that did not meet the legal criteria for a CPS report. Although these calls do not require a CPS investigation, the Division enters the information into the CPS database as background information in case future calls are received about the same child or family. Every call that does not meet the criteria for a CPS report is reviewed within 48 hours by CPS Quality Assurance staff to assure the accuracy of the decision.

The 16,612 reports received in this reporting period represent a 12 percent decrease in the number of child maltreatment reports received since March 2005. However, as indicated in the Executive Summary of this report, the decrease in reports has not translated into a decrease in workload of CPS specialists. Higher-than-recommended caseloads and improvements in child welfare practice – including a better process for assessing child safety and risk and additional strategies for engaging families in decision-making on behalf of children – have resulted in increased workload demands on the CPS specialists carrying those cases.

Pages 11-18 provide additional information on reports received by category of child maltreatment, risk level and county.

INVESTIGATIONS

All of the 16,422 reports received that were within CPS jurisdiction were assigned for investigation. CPS completed investigations in 14,841 (90.4 percent) of those reports. The remaining reports were still open for investigation at the time of this bulletin. There are several reasons why investigations may remain open, including a pending criminal investigation or the need for records from outside sources – such as hospitals – that may impact the outcome of the CPS investigation.

Of the 14,841 investigations completed, 13,762 (almost 93 percent) were unsubstantiated and 1,079 (more than 7 percent) were substantiated. These numbers will be revised in subsequent reports, as the remaining investigations for this reporting period are completed and as the results of cases where parents appealed the findings are received.

For the prior reporting period (April 1, 2006 to September 30, 2006), the following revisions were made: the number of unsubstantiated reports was revised from 12,090 to 14,857; and, the number of substantiated reports was revised from 1,007 to 1,376.

A substantiated finding is entered when the CPS investigation results in proof that the specific allegations received in the CPS report were true. The substantiation rate is not an indicator of risk and is not tied to the removal of a child. There are many cases where the specific allegation in the report cannot be proven, but the CPS investigation determined that the child was at imminent risk of harm. In those cases, if services and supports could not be put in place to keep the child safely at home, the child would be removed.

Pages 19-35 provide additional statistical information on investigations by category of maltreatment, risk level and county. Information on substantiation and removals also is provided.

CHILDREN IN OUT-OF-HOME CARE

The number of children in out-of-home care continued to decline. The number had been growing at an annual rate as high as 19 percent in fiscal year 2004. The latest data demonstrate that the number of children in out-of-home care has decreased by 1.3 percent since September 2005. As use of the Division's in-home services model continues and as the Division implements current strategies and identifies additional strategies to strengthen the most at-risk families, this number is expected to continue to decline.

Almost 76 percent of the children in out-of-home care were placed with relatives or in foster homes, demonstrating the Division's continued commitment to placing children in the most family-like setting possible.

Children in out-of-home care and their parents saw increased support and monitoring from CPS specialists as well. The percentage of children and parents receiving the required monthly visitation during the reporting period increased to almost 78 percent and 63 percent, respectively. This is the highest level of visitation achieved in the past four years.

The number of children, particularly young children, placed in group homes and shelters continues to dramatically decrease. Between March 2005 and March 2007, the overall number of children placed in group homes or shelters decreased by 21 percent; the number of children under seven in group homes decreased by 85 percent and the number of children under four in shelters decreased by 78 percent.

When young children are placed in group homes or shelters, it is typically because that placement meets their best interests, for example, the shelter may provide the best care they need for a medical condition or behavioral disorder, or the group home may offer the child the best option for not being separated from their sibling(s).

The latest data also indicate that children are spending less time in care. From March 2005 to March 2007, the number of children in shelter for longer than 21 days has decreased by 37 percent.

Pages 36-48 provide additional demographic information about children in out-of-home care.

FOSTER HOMES

During this reporting period, the total number of foster homes decreased slightly to 3,177 licensed homes, despite the addition of 432 new foster homes. Despite this small overall decrease, the number of licensed

foster homes in March 2007 was 40 percent higher than March 2005. More than 29 percent of the foster homes that close do so because the foster family has adopted a child in their care. Other reasons include personal or family issues or problems (17 percent), family relocation (13 percent) and non-compliance with licensing requirements (11 percent). The number of foster homes receiving the required monthly visit by their community-based, contracted licensing specialist increased to 67 percent. The Division believes this number is actually higher, but is under-reported because the Division does not have an automated mechanism for collecting this information from contracted providers. The Division recognizes this issue and is working to correct it.

PERMANENCY

During this reporting period, 695 children found safe, permanent homes through adoption. Over the past two years, this number has increased by 62 percent. Despite this success, at the end of the reporting period, there were 2,439 children in out-of-home care with a case plan goal of adoption. The Division continues its aggressive recruitment campaign to find additional foster and adoptive parents for abused and neglected children in care.

Pages 62-64 provide demographic information on children with a case plan goal of adoption.

CHILDREN LEAVING OUT-OF-HOME CARE

Federal law requires that the Division make reasonable efforts to safely reunify a child with their family. When this is not possible, the law requires that the Division find the child another safe, permanent family as quickly as possible. The majority of the children who left care in the past six months did so because they were either reunified with their families (50.3 percent) or they found a safe, permanent family through guardianship (13.4 percent) or adoption (19.6 percent). The remaining 16.7 percent of the children who left out-of-home care left for other reasons, including transferring to another agency or aging out of foster care and moving into a living arrangement with the support of the Division's Independent Living Program.

During this reporting period, one child died in out-of-home care. According to the autopsy report, the child died of natural causes.

Pages 51-61 provide additional detailed information about children leaving out-of-home care.

Semi-Annual Comparisons

	Apr 2003 through Sep 2003	Oct 2003 through Mar 2004	Apr 2004 through Sep 2004	Oct 2004 through Mar 2005	Apr 2005 through Sep 2005	Oct 2005 through Mar 2006	Apr 2006 through Sep 2006	Oct 2006 through Mar 2007
Number of Reports Received	18,680	20,242	19,165	18,839	18,797	17,756	16,781	16,612
Number of Reports Substantiated ¹	2,299 (17%)	2,363 (15%)	2,157 (14%)	1,734 (11%)	1,677 (11%)	1,326 (9%)	1,376 (10%)	1,079 (8%)
Number of Reports Investigated & Closed	N/A	N/A	N/A	N/A	N/A	N/A	16,256	15,017
Number of Reports Responded To	N/A	N/A	N/A	N/A	N/A	N/A	16,619	16,422
Number of new removals	3,349	3,504	3,630	3,617	4,078	3,753	3,773	3,683
Number of new removals with Voluntary under 18	311	256	279	118	420	290	386	398
Number of Children in Out-of-Home Care on the Last Day of Reporting Period	7,535	8,246	8,839	9,536	9,906	9,902	9,833	9,773
Number of Children in Shelter for More than 21 Days	1,323	1,431	1,319	1,127	1,039	840	744	705
Number and Percentage of Children Receiving Visitation In the Last Month of Reporting Period	4,890 (64.9%)	5,266 (63.9%)	5,475 (61.9%)	6,506 (68.2%)	6,045 (61.0%)	6,411 (64.7%)	6,437 (65.5%)	7,610 (77.9%)
Number and Percentage of Children not Receiving Visitation	2,645 (35.1%)	2,980 (36.1%)	3,364 (38.1%)	3,030 (31.8%)	3,861 (39.0%)	3,491 (35.3%)	3,396 (34.5%)	2,163 (22.1%)
Number and Percentage of Parents Receiving Visitation	851 (50.3%)	973 (50.7%)	1,049 (50.4%)	1,255 (56.0%)	1,080 (47.9%)	1,154 (52.1%)	1,131 (51.8%)	1,398 (63.1%)
Number of Licensed Foster Homes	1,892	2,007	2,191	2,267	2,288	2,863	3,256	3,177
Number of Foster Home Spaces Available to ACYF	3,982	3,691	4,044	5,020	4,905	5,668	6,469	6,498
Number of New Foster Homes	308	334	410	400	397	328	426	432
Number of Foster Homes Closed	281	219	197	410	258	295	166	232
Number and Percentage of Foster Homes Receiving Visitation In the Last Qtr. Of Reporting Period	1,606 (84.9%)	1,774 (88.4%)	1,723 (78.7%)	1,791 (79.0%)	1,672 (63.3%)	1,833 (64.0%)	1,790 (55.0%)	2,166 (66.6%)
Number and Percentage of Foster Homes not Receiving Visitation	286 (15.1%)	233 (11.6%)	466 (21.3%)	476 (21.0%)	968 (36.7%)	1,030 (36.0%)	1,466 (45.0%)	1,061 (33.4%)
Number of Children Leaving DES Custody	2,528	2,655	2,883	2,726	3,488	3,506	3,595	3,553
Number of Children With a Case Plan Goal of Adoption	1,485	1,629	1,893	2,044	2,170	2,345	2,302	2,439
Number of Children With a Finalized Adoption	408	380	373	430	570	586	736	695

¹ Since the appeals process delays the substantiation of reports, revisions to the substantiation rate for the prior reporting period will occur with every semi-annual report produced.

Reports of Abuse & Neglect

The categories of “child abuse or neglect” are defined in A.R.S. §8-201 and A.R.S. §13-3623 (A). These definitions provide the major categories in this report.

Between October 1, 2006 and March 31, 2007, there were 16,612 incoming communications to the Child Abuse Hotline that met the criteria for a report of abuse or neglect. Of these, 190 were within the jurisdiction of military or tribal governments and were referred to those jurisdictions. This compares to 16,781 incoming communications received during the last reporting period which met the criteria of a report of abuse or neglect.

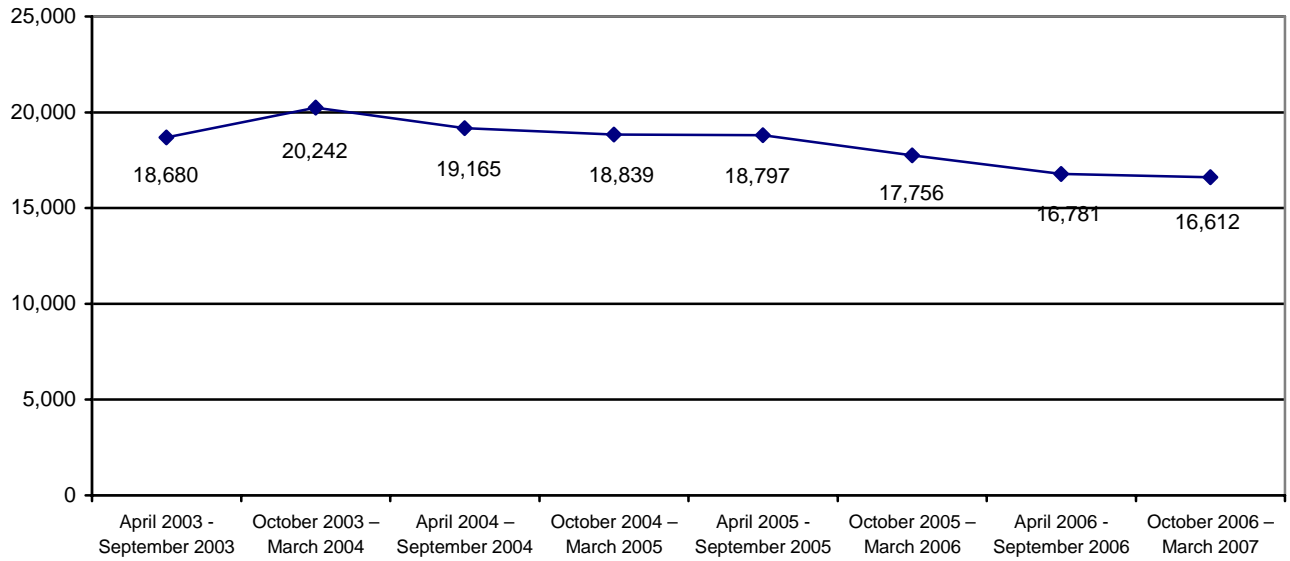
Table 1, below, shows the number of reports received by the Department by category of maltreatment for the last eight reporting periods. The table shows that for the current reporting period 9,838 or 59.2 percent of the 16,612 reports of maltreatment were related to allegations of neglect, 5,571 or 33.5 percent of the reports were related to allegations of physical abuse, 1,007 or 6.1 percent of the reports were related to allegations of sexual abuse, and 196 or 1.2 percent of the reports were related to allegations of emotional abuse.

**TABLE 1
REPORTS BY REPORTING PERIOD AND CATEGORY**

	Neglect	Physical Abuse	Sexual Abuse	Emotional Abuse	Total
April 2003 - September 2003	11,314 60.5%	5,864 31.4%	1,119 6.0%	383 2.1%	18,680 100.0%
October 2003 – March 2004	11,978 59.1%	6,695 33.1%	1,164 5.8%	405 2.0%	20,242 100.0%
April 2004 – September 2004	11,604 60.5%	6,028 31.5%	1,178 6.1%	355 1.9%	19,165 100.0%
October 2004 – March 2005	10,950 58.2%	6,504 34.5%	1,112 5.9%	273 1.4%	18,839 100.0%
April 2005 - September 2005	11,282 60.0%	6,139 32.7%	1,135 6.0%	241 1.3%	18,797 100.0%
October 2005 – March 2006	10,592 59.6%	5,890 33.2%	1,010 5.7%	264 1.5%	17,756 100.0%
April 2006 - September 2006	10,201 60.7%	5,346 31.9%	1,019 6.1%	215 1.3%	16,781 100.0%
October 2006 – March 2007	9,838 59.2%	5,571 33.5%	1,007 6.1%	196 1.2%	16,612 100.0%

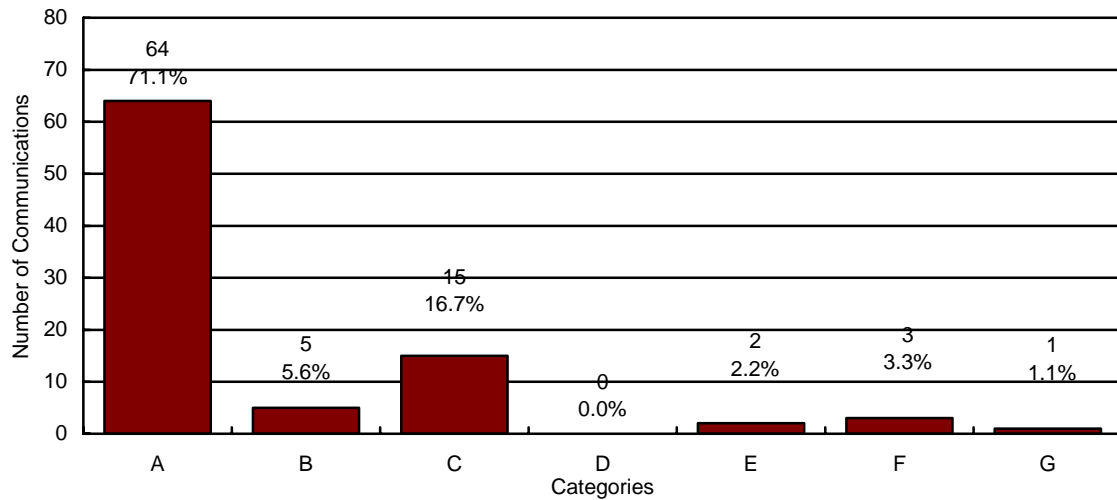
Chart 1 shows that the number of CPS reports received by the CPS Hotline continues to stabilize. Comparing the current reporting period to the prior reporting period, the number of reports received decreased by 169 reports or 1.0%.

**CHART 1
REPORTS OF CHILD ABUSE AND NEGLECT BY REPORTING PERIOD**



In addition to the 16,612 reports during the current reporting period, the Child Abuse Hotline received 13,357 communications that did not meet the statutory criteria of a report of maltreatment. A random sample of these communications is contained in the chart below.

CHART 2
SAMPLE OF COMMUNICATIONS TO THE CHILD ABUSE HOTLINE THAT DO NOT MEET THE STATUTORY REQUIREMENTS OF A REPORT OF ABUSE OR NEGLECT



N=90

- A = Concern Only/No Allegation of Child Abuse or Neglect**
- B = Out of CPS Jurisdiction**
- C = Call Appropriate for Law Enforcement Jurisdiction²**
- D = Non-Caretaker Neglect/Child No Longer at Risk**
- E = Insufficient Information**
- F = Truancy/Custody Issues**
- G = Current Case Questions or Referrals**

All communications that do not meet the statutory requirements for a field investigation of abuse or neglect are reviewed within forty-eight (48) hours by DES Quality Assurance staff.

Child Protective Services: Investigations

Investigation data for the current reporting period:

- 16,612 reports appropriate for investigation.
- Of these, 190 reports fell within the jurisdiction of military or tribal governments.
- 16,422 reports were assigned to be investigated by CPS.
- There were 14,025 reports received during the current reporting period that were subject to substantiation. This results in preliminary 8% substantiation rate for the current reporting period.

² The category “Call Appropriate for Law Enforcement Jurisdiction” refers to a situation where the alleged perpetrator is not a parent or primary caretaker and the allegations, if true, would constitute a crime.

- There were 14,390 reports received during the prior reporting period that were subject to substantiation. This results in a 10% substantiation rate for the prior reporting period.

The following tables, on pages 11 through 29, display investigations by risk level, category of maltreatment, and county. As displayed, the number of CPS reports received by risk level remained relatively stable compared to the prior reporting period. For the current reporting period, the CPS Hotline classified 16.9 percent of the reports received as high risk, 26.2 percent as moderate risk, 42.3 percent as low risk, and 14.6 percent as potential risk.

The number of CPS reports received by type of maltreatment remained relatively stable compared to the prior reporting period. For the current reporting period, the CPS Hotline classified 1.2 percent of CPS reports as emotional abuse, 59.2 percent as neglect, 33.5 percent as physical abuse, and 6.1 percent as sexual abuse.

**CHART 3
NUMBER OF REPORTS RECEIVED BY RISK LEVEL**

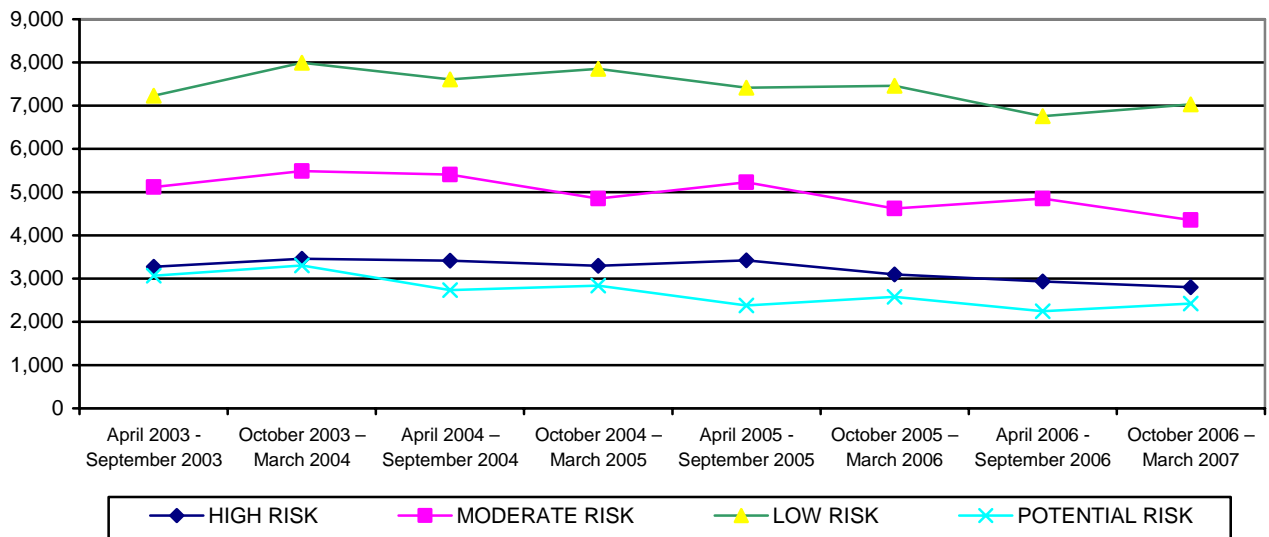
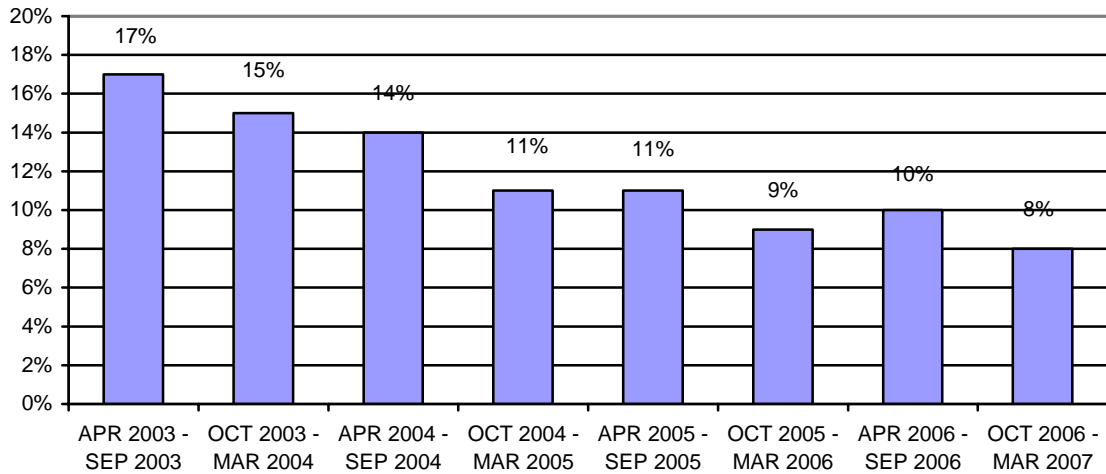


CHART 4 SUBSTANTIATION RATE BY REPORTING PERIOD



**TABLE 2
NUMBER OF REPORTS RECEIVED BY RISK LEVEL AND COUNTY FOR PERIOD OF
OCTOBER 1, 2006 THROUGH MARCH 31, 2007**

COUNTY	HIGH	MODERATE	LOW	POTENTIAL	TOTAL	% OF TOTAL
APACHE	15	26	34	15	90	0.5%
COCHISE	75	107	194	50	426	2.6%
COCONINO	66	99	150	49	364	2.2%
GILA	42	43	55	16	156	0.9%
GRAHAM	12	33	37	12	94	0.6%
GREENLEE	2	3	8	4	17	0.1%
LA PAZ	12	15	23	5	55	0.3%
MARICOPA	1,726	2,459	3,966	1,422	9,573	57.6%
MOHAVE	95	178	230	73	576	3.5%
NAVAJO	46	74	134	50	304	1.8%
PIMA	362	774	1,397	448	2,981	18.0%
PINAL	176	264	359	146	945	5.7%
SANTA CRUZ	26	19	44	9	98	0.6%
YAVAPAI	74	149	225	81	529	3.2%
YUMA	71	116	172	45	404	2.4%
STATEWIDE	2,800	4,359	7,028	2,425	16,612	100.0%
% OF TOTAL	16.9%	26.2%	42.3%	14.6%	100.0%	

TABLE 3
NUMBER OF REPORTS RECEIVED BY RISK LEVEL AND COUNTY FOR PERIOD OF
APRIL 1, 2006 THROUGH SEPTEMBER 30, 2006

COUNTY	HIGH	MODERATE	LOW	POTENTIAL	TOTAL	% OF TOTAL
APACHE	14	17	42	7	80	0.5%
COCHISE	68	101	171	47	387	2.3%
COCONINO	75	124	152	44	395	2.4%
GILA	36	57	88	21	202	1.2%
GRAHAM	14	32	38	13	97	0.6%
GREENLEE	2	3	10	3	18	0.1%
LA PAZ	7	21	25	7	60	0.4%
MARICOPA	1,842	2,786	3,722	1,272	9,622	57.3%
MOHAVE	103	219	255	58	635	3.8%
NAVAJO	45	65	114	36	260	1.5%
PIMA	383	823	1,361	455	3,022	18.0%
PINAL	192	260	350	113	915	5.5%
SANTA CRUZ	16	29	37	5	87	0.5%
YAVAPAI	75	193	229	96	593	3.5%
YUMA	61	121	158	68	408	2.4%
STATEWIDE	2,933	4,851	6,752	2,245	16,781	100.0%
% OF TOTAL	17.5%	28.9%	40.2%	13.4%	100.0%	

CHART 5
NUMBER OF REPORTS RECEIVED BY TYPE OF MALTREATMENT

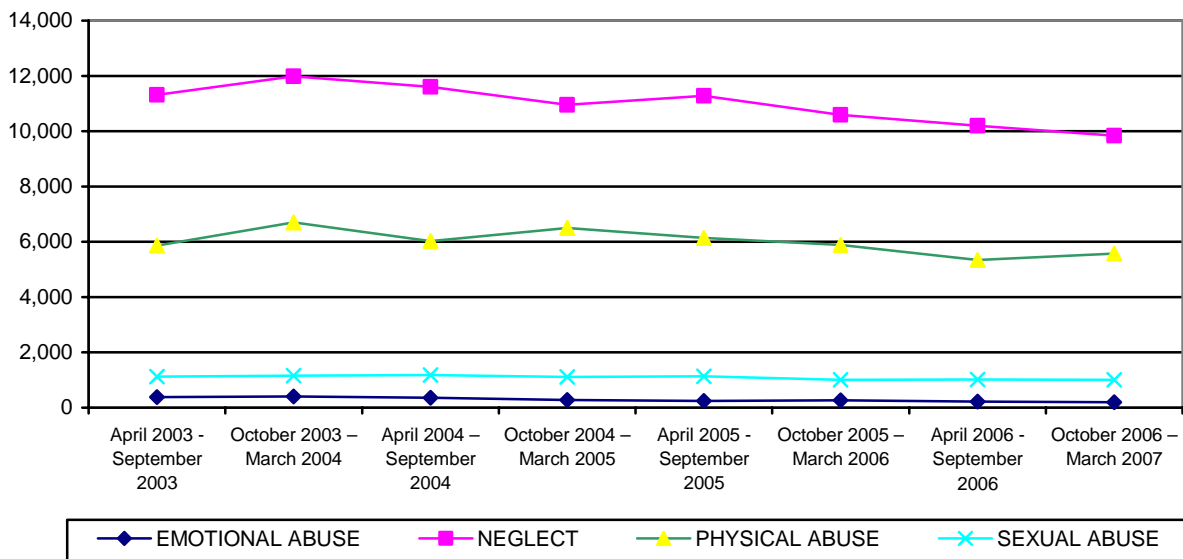


TABLE 4
NUMBER OF REPORTS RECEIVED BY TYPE OF MALTREATMENT AND COUNTY FOR
PERIOD OF OCTOBER 1, 2006 THROUGH MARCH 31, 2007

COUNTY	EMOTIONAL ABUSE	NEGLECT	PHYSICAL ABUSE	SEXUAL ABUSE	TOTAL	% OF TOTAL
APACHE	3	56	24	7	90	0.5%
COCHISE	10	270	127	19	426	2.6%
COCONINO	5	214	122	23	364	2.2%
GILA	0	111	35	10	156	0.9%
GRAHAM	2	57	30	5	94	0.6%
GREENLEE	0	8	9	0	17	0.1%
LA PAZ	1	43	10	1	55	0.3%
MARICOPA	98	5,621	3,264	590	9,573	57.6%
MOHAVE	2	344	197	33	576	3.5%
NAVAJO	4	178	104	18	304	1.8%
PIMA	50	1,711	1,042	178	2,981	18.0%
PINAL	8	580	292	65	945	5.7%
SANTA CRUZ	1	62	33	2	98	0.6%
YAVAPAI	8	321	165	35	529	3.2%
YUMA	4	262	117	21	404	2.4%
STATEWIDE	196	9,838	5,571	1,007	16,612	100.0%
% OF TOTAL	1.2%	59.2%	33.5%	6.1%	100.0%	

TABLE 5
NUMBER OF REPORTS RECEIVED BY TYPE OF MALTREATMENT COUNTY FOR
PERIOD OF APRIL 1, 2006 THROUGH SEPTEMBER 30, 2006

COUNTY	EMOTIONAL ABUSE	NEGLECT	PHYSICAL ABUSE	SEXUAL ABUSE	TOTAL	% OF TOTAL
APACHE	0	55	17	8	80	0.5%
COCHISE	9	244	120	14	387	2.3%
COCONINO	7	266	104	18	395	2.4%
GILA	4	132	57	9	202	1.2%
GRAHAM	2	60	29	6	97	0.6%
GREENLEE	1	11	5	1	18	0.1%
LA PAZ	0	37	22	1	60	0.4%
MARICOPA	102	5,773	3,159	588	9,622	57.3%
MOHAVE	3	421	173	38	635	3.8%
NAVAJO	3	151	89	17	260	1.5%
PIMA	62	1,824	951	185	3,022	18.0%
PINAL	6	552	293	64	915	5.5%
SANTA CRUZ	0	45	37	5	87	0.5%
YAVAPAI	11	372	168	42	593	3.5%
YUMA	5	258	122	23	408	2.4%
STATEWIDE	215	10,201	5,346	1,019	16,781	100.0%
% OF TOTAL	1.3%	60.7%	31.9%	6.1%	100%	

**TABLE 6
NUMBER OF REPORTS NOT RESPONDED TO BY RISK LEVEL AND COUNTY FOR
PERIOD OF OCTOBER 1, 2006 THROUGH MARCH 31, 2007**

COUNTY	HIGH	MODERATE	LOW	POTENTIAL	TOTAL	% OF TOTAL
APACHE	0	0	0	0	0	0.0%
COCHISE	0	0	0	0	0	0.0%
COCONINO	0	0	0	0	0	0.0%
GILA	0	0	0	0	0	0.0%
GRAHAM	0	0	0	0	0	0.0%
GREENLEE	0	0	0	0	0	0.0%
LA PAZ	0	0	0	0	0	0.0%
MARICOPA	0	0	0	0	0	0.0%
MOHAVE	0	0	0	0	0	0.0%
NAVAJO	0	0	0	0	0	0.0%
PIMA	0	0	0	0	0	0.0%
PINAL	0	0	0	0	0	0.0%
SANTA CRUZ	0	0	0	0	0	0.0%
YAVAPAI	0	0	0	0	0	0.0%
YUMA	0	0	0	0	0	0.0%
STATEWIDE	0	0	0	0	0	0.0%
% OF TOTAL	0.0%	0.0%	0.0%	0.0%	0.0%	

By statute, a random sample of reports not responded to for the period is required. In addition, short descriptions of these reports are also required. As there were no reports without a response for this reporting period, the sample of reports has been omitted.

**CHART 6
NUMBER OF REPORTS ASSIGNED FOR INVESTIGATION BY RISK LEVEL AND
REPORTING PERIOD**

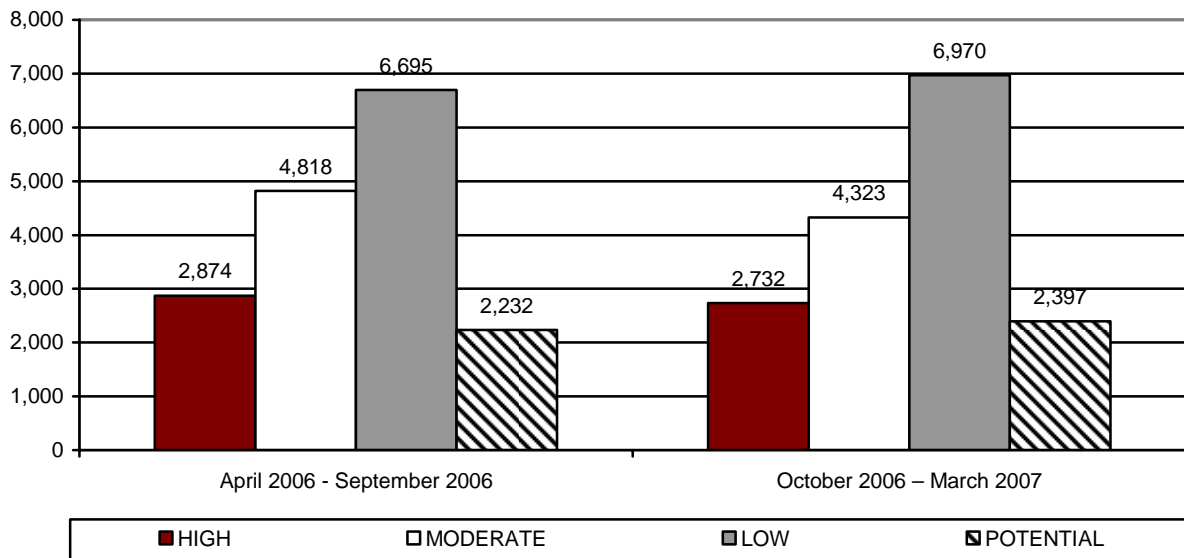


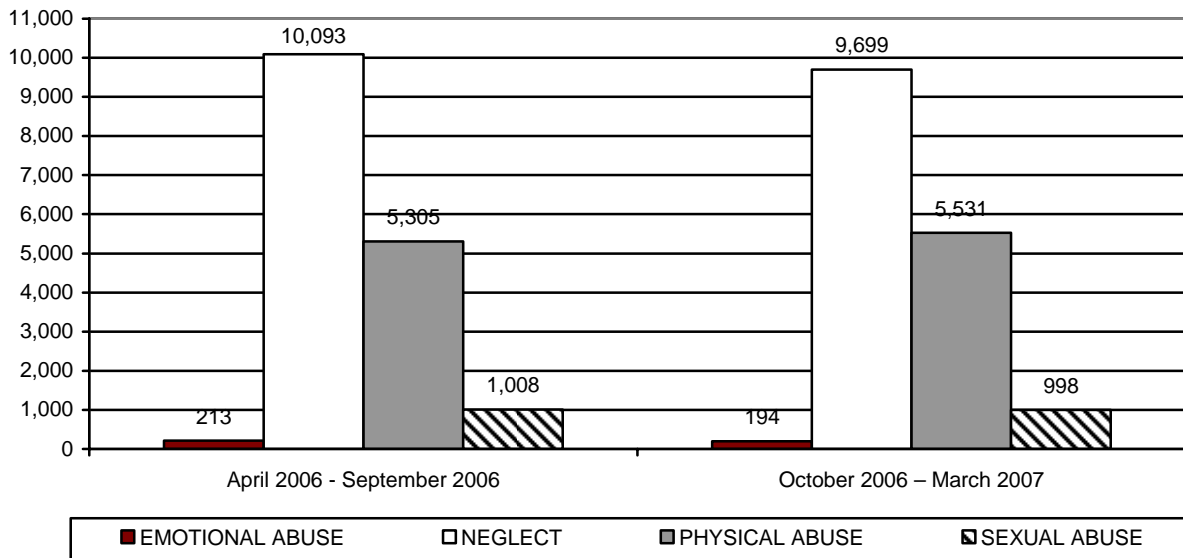
TABLE 7
NUMBER OF REPORTS ASSIGNED FOR INVESTIGATION BY RISK LEVEL AND COUNTY
FOR PERIOD OF OCTOBER 1, 2006 THROUGH MARCH 31, 2007

COUNTY	HIGH	MODERATE	LOW	POTENTIAL	TOTAL	% OF TOTAL
APACHE	11	23	31	11	76	0.5%
COCHISE	75	107	194	50	426	2.6%
COCONINO	56	91	135	43	325	2.0%
GILA	36	42	54	16	148	0.9%
GRAHAM	11	33	37	11	92	0.6%
GREENLEE	2	3	8	4	17	0.1%
LA PAZ	11	11	22	4	48	0.3%
MARICOPA	1,709	2,451	3,956	1,417	9,533	58.0%
MOHAVE	92	178	229	73	572	3.5%
NAVAJO	37	70	123	44	274	1.7%
PIMA	355	770	1,391	445	2,961	18.0%
PINAL	166	260	352	145	923	5.5%
SANTA CRUZ	26	19	44	9	98	0.6%
YAVAPAI	74	149	223	80	526	3.2%
YUMA	71	116	171	45	403	2.5%
STATEWIDE	2,732	4,323	6,970	2,397	16,422	100.0%
% OF TOTAL	16.6%	26.3%	42.5%	14.6%	100.0%	

TABLE 8
NUMBER OF REPORTS ASSIGNED FOR INVESTIGATION BY RISK LEVEL AND COUNTY
FOR PERIOD OF APRIL 1, 2006 THROUGH SEPTEMBER 30, 2006

COUNTY	HIGH	MODERATE	LOW	POTENTIAL	TOTAL	% OF TOTAL
APACHE	8	16	36	7	67	0.4%
COCHISE	68	101	171	47	387	2.3%
COCONINO	62	114	137	44	357	2.1%
GILA	32	56	88	21	197	1.2%
GRAHAM	13	31	38	13	95	0.6%
GREENLEE	2	3	10	3	18	0.1%
LA PAZ	5	18	23	7	53	0.3%
MARICOPA	1,831	2,782	3,716	1,265	9,594	57.8%
MOHAVE	102	219	255	58	634	3.8%
NAVAJO	40	60	105	35	240	1.4%
PIMA	377	818	1,350	451	2,996	18.0%
PINAL	182	257	344	112	895	5.4%
SANTA CRUZ	16	29	37	5	87	0.5%
YAVAPAI	75	193	227	96	591	3.6%
YUMA	61	121	158	68	408	2.5%
STATEWIDE	2,874	4,818	6,695	2,232	16,619	100.0%
% OF TOTAL	17.3%	29.0%	40.3%	13.4%	100.0%	

**CHART 7
NUMBER OF REPORTS ASSIGNED FOR INVESTIGATION BY TYPE OF MALTREATMENT
AND REPORTING PERIOD**



**TABLE 9
NUMBER OF REPORTS ASSIGNED FOR INVESTIGATION BY TYPE OF MALTREATMENT
BY COUNTY FOR PERIOD OF OCTOBER 1, 2006 THROUGH MARCH 31, 2007**

COUNTY	EMOTIONAL ABUSE	NEGLECT	PHYSICAL ABUSE	SEXUAL ABUSE	TOTAL	% OF TOTAL
APACHE	2	46	22	6	76	0.5%
COCHISE	10	270	127	19	426	2.6%
COCONINO	4	187	113	21	325	2.0%
GILA	0	103	35	10	148	0.9%
GRAHAM	2	55	30	5	92	0.6%
GREENLEE	0	8	9	0	17	0.1%
LA PAZ	1	39	8	0	48	0.3%
MARICOPA	98	5,596	3,252	587	9,533	58.0%
MOHAVE	2	341	196	33	572	3.5%
NAVAJO	4	155	97	18	274	1.7%
PIMA	50	1,695	1,039	177	2,961	18.0%
PINAL	8	561	290	64	923	5.5%
SANTA CRUZ	1	62	33	2	98	0.6%
YAVAPAI	8	320	163	35	526	3.2%
YUMA	4	261	117	21	403	2.5%
STATEWIDE	194	9,699	5,531	998	16,422	100.0%
% OF TOTAL	1%	59%	34%	6%	100%	

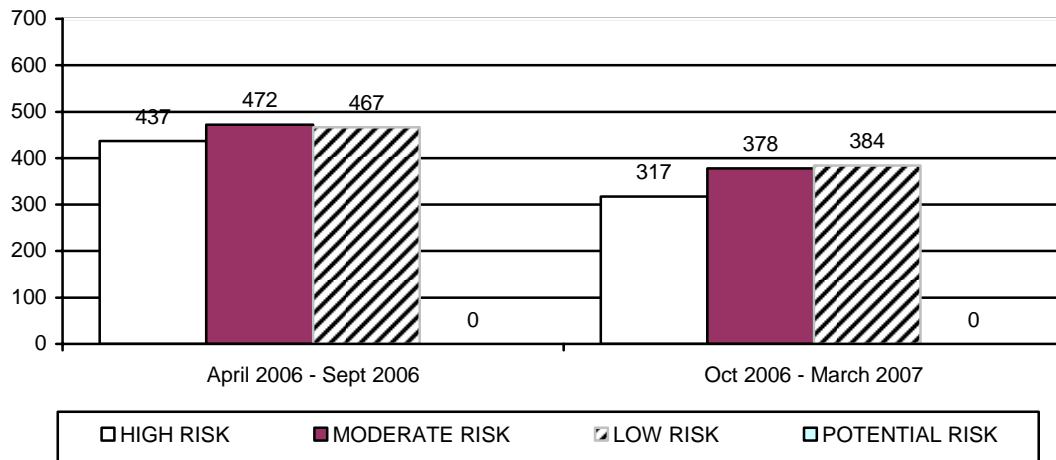
TABLE 10
NUMBER OF REPORTS ASSIGNED FOR INVESTIGATION BY TYPE OF MALTREATMENT
BY COUNTY FOR PERIOD OF APRIL 1, 2006 THROUGH SEPTEMBER 30, 2006

COUNTY	EMOTIONAL ABUSE	NEGLECT	PHYSICAL ABUSE	SEXUAL ABUSE	TOTAL	% OF TOTAL
APACHE	0	48	12	7	67	0.4%
COCHISE	9	244	120	14	387	2.3%
COCONINO	6	235	102	14	357	2.1%
GILA	4	128	56	9	197	1.2%
GRAHAM	2	58	29	6	95	0.6%
GREENLEE	1	11	5	1	18	0.1%
LA PAZ	0	33	19	1	53	0.3%
MARICOPA	102	5,753	3,152	587	9,594	57.8%
MOHAVE	3	420	173	38	634	3.8%
NAVAJO	3	139	82	16	240	1.4%
PIMA	62	1,810	940	184	2,996	18.0%
PINAL	5	539	289	62	895	5.4%
SANTA CRUZ	0	45	37	5	87	0.5%
YAVAPAI	11	372	167	41	591	3.6%
YUMA	5	258	122	23	408	2.5%
STATEWIDE	213	10,093	5,305	1,008	16,619	100.0%
% OF TOTAL	1.3%	60.7%	31.9%	6.1%	100%	

During this reporting period, there were 16,422 reports assigned for investigation. Of these, CPS completed 14,841 investigations or 90.3 percent. Investigations not completed remain open when the investigation is still in process, when the CPS Specialist is waiting for the results of a law enforcement investigation and/or receipt of records that impact the investigation finding, or when the investigation has been completed but is waiting supervisory review and approval.

The preliminary number of CPS reports that are substantiated for this reporting period is 1,079. For the prior reporting period, the number of CPS reports that were assigned for investigation that resulted in substantiated findings was revised from 1,007 to 1,376 to reflect further results of parents' rights to due process. For the prior reporting period, 31.8 percent of investigative findings were classified as high risk, 34.3 percent as moderate risk, and 33.9 percent as low risk. Potential risk reports are not substantiated by CPS.

**CHART 8
NUMBER OF REPORTS ASSIGNED FOR INVESTIGATION BY RISK LEVEL AND
REPORTING PERIOD THAT RESULTED IN
SUBSTANTIATION**



**TABLE 11
NUMBER OF REPORTS ASSIGNED FOR INVESTIGATION BY RISK LEVEL AND COUNTY
THAT RESULTED IN SUBSTANTIATION FOR PERIOD OF OCTOBER 1, 2006 THROUGH
MARCH 31, 2007**

COUNTY	HIGH	MODERATE	LOW	POTENTIAL	TOTAL	% OF TOTAL
APACHE	2	2	2	0	6	0.6%
COCHISE	9	15	20	0	44	4.1%
COCONINO	13	15	17	0	45	4.2%
GILA	4	3	1	0	8	0.7%
GRAHAM	4	2	1	0	7	0.6%
GREENLEE	1	0	0	0	1	0.1%
LA PAZ	2	1	0	0	3	0.3%
MARICOPA	122	166	173	0	461	42.8%
MOHAVE	16	13	13	0	42	3.9%
NAVAJO	5	6	2	0	13	1.2%
PIMA	92	96	109	0	297	27.5%
PINAL	21	22	20	0	63	5.8%
SANTA CRUZ	2	3	3	0	8	0.7%
YAVAPAI	16	21	14	0	51	4.7%
YUMA	8	13	9	0	30	2.8%
STATEWIDE	317	378	384	0	1,079	100.0%
% OF TOTAL	29.4%	35.0%	35.6%	0.0%	100.0%	

TABLE 12
NUMBER OF REPORTS ASSIGNED FOR INVESTIGATION BY RISK LEVEL AND COUNTY
THAT RESULTED IN SUBSTANTIATION FOR PERIOD OF APRIL 1, 2006 THROUGH
SEPTEMBER 31, 2006

COUNTY	HIGH	MODERATE	LOW	POTENTIAL	TOTAL	% OF TOTAL
APACHE	2	2	2	0	6	0.4%
COCHISE	12	17	23	0	52	3.8%
COCONINO	10	12	14	0	36	2.6%
GILA	5	3	5	0	13	0.9%
GRAHAM	4	3	2	0	9	0.7%
GREENLEE	1	0	0	0	1	0.1%
LA PAZ	0	2	1	0	3	0.2%
MARICOPA	192	188	193	0	573	41.6%
MOHAVE	23	15	7	0	45	3.3%
NAVAJO	12	8	4	0	24	1.7%
PIMA	120	141	147	0	408	29.7%
PINAL	20	30	25	0	75	5.5%
SANTA CRUZ	5	3	2	0	10	0.7%
YAVAPAI	22	35	26	0	83	6.0%
YUMA	9	13	16	0	38	2.8%
STATEWIDE	437	472	467	0	1,376	100.0%
% OF TOTAL	31.8%	34.3%	33.9%	0.0%	100.0%	

CHART 9
NUMBER OF REPORTS ASSIGNED FOR INVESTIGATION BY TYPE OF MALTREATMENT
THAT RESULTED IN SUBSTANTIATION

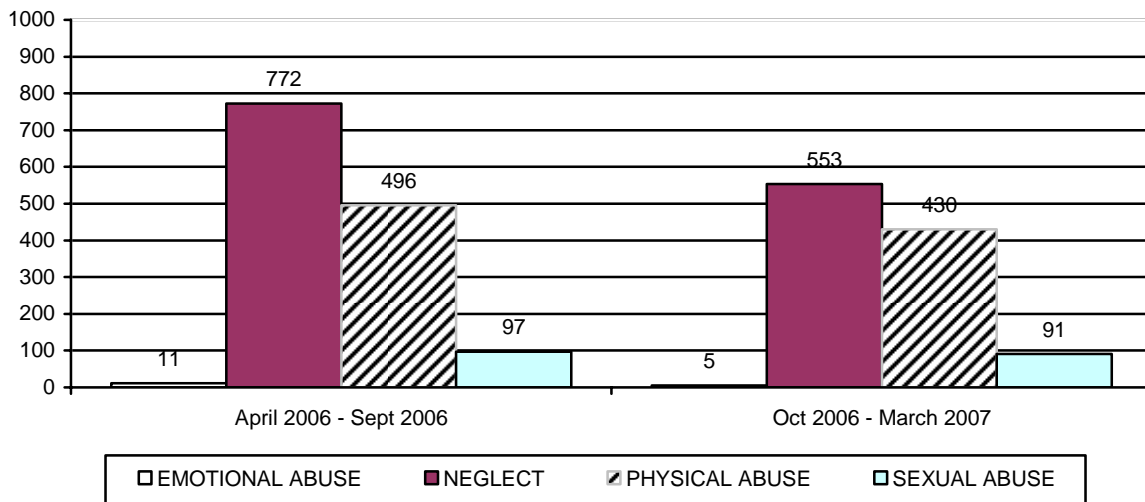


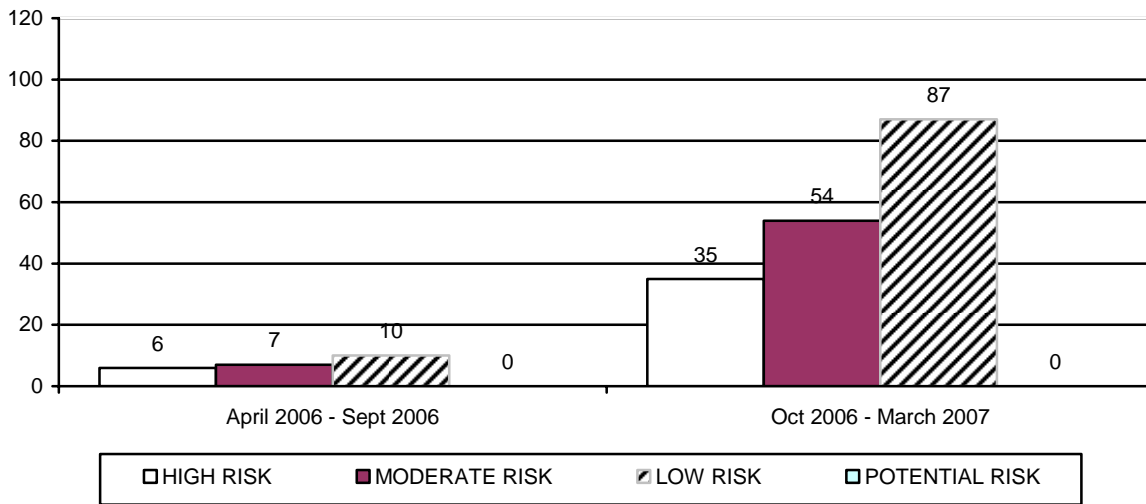
TABLE 13
NUMBER OF REPORTS ASSIGNED FOR INVESTIGATION BY TYPE OF MALTREATMENT
BY COUNTY THAT RESULTED IN SUBSTANTIATION FOR PERIOD OF OCTOBER 1, 2006
THROUGH MARCH 31, 2007

COUNTY	EMOTIONAL ABUSE	NEGLECT	PHYSICAL ABUSE	SEXUAL ABUSE	TOTAL	% OF TOTAL
APACHE	0	4	2	0	6	0.6%
COCHISE	1	28	13	2	44	4.1%
COCONINO	0	29	14	2	45	4.2%
GILA	0	7	0	1	8	0.7%
GRAHAM	0	3	3	1	7	0.6%
GREENLEE	0	0	1	0	1	0.1%
LA PAZ	0	3	0	0	3	0.3%
MARICOPA	0	192	225	44	461	42.8%
MOHAVE	0	17	19	6	42	3.9%
NAVAJO	0	7	2	4	13	1.2%
PIMA	2	187	96	12	297	27.5%
PINAL	1	37	19	6	63	5.8%
SANTA CRUZ	1	3	3	1	8	0.7%
YAVAPAI	0	24	20	7	51	4.7%
YUMA	0	12	13	5	30	2.8%
STATEWIDE	5	553	430	91	1,079	100.0%
% OF TOTAL	0.5%	51.2%	39.9%	8.4%	100.0%	

TABLE 14
NUMBER OF REPORTS ASSIGNED FOR INVESTIGATION BY TYPE OF MALTREATMENT
BY COUNTY THAT RESULTED IN SUBSTANTIATION FOR PERIOD OF APRIL 1, 2006
THROUGH SEPTEMBER 30, 2006

COUNTY	EMOTIONAL ABUSE	NEGLECT	PHYSICAL ABUSE	SEXUAL ABUSE	TOTAL	% OF TOTAL
APACHE	0	5	1	0	6	0.4%
COCHISE	1	37	11	3	52	3.8%
COCONINO	0	32	4	0	36	2.6%
GILA	0	8	5	0	13	0.9%
GRAHAM	0	5	3	1	9	0.7%
GREENLEE	0	1	0	0	1	0.1%
LA PAZ	0	1	2	0	3	0.2%
MARICOPA	1	272	252	48	573	41.6%
MOHAVE	0	28	13	4	45	3.3%
NAVAJO	0	13	7	4	24	1.7%
PIMA	5	256	127	20	408	29.7%
PINAL	0	37	33	5	75	5.5%
SANTA CRUZ	0	8	2	0	10	0.7%
YAVAPAI	3	50	20	10	83	6.0%
YUMA	1	19	16	2	38	2.8%
STATEWIDE	11	772	496	97	1,376	100.0%
% OF TOTAL	0.8%	56.2%	36.0%	7.0%	100.0%	

**CHART 10
NUMBER OF REPORTS ASSIGNED FOR INVESTIGATION BY RISK LEVEL AND
REPORTING PERIOD THAT RESULTED IN PROPOSED SUBSTANTIATION**



**TABLE 15
NUMBER OF REPORTS ASSIGNED FOR INVESTIGATION BY RISK LEVEL AND COUNTY
THAT RESULTED IN PROPOSED SUBSTANTIATION FOR PERIOD OF OCTOBER 1, 2006
THROUGH MARCH 31, 2007**

COUNTY	HIGH	MODERATE	LOW	POTENTIAL	TOTAL	% OF TOTAL
APACHE	0	0	0	0	0	0.0%
COCHISE	0	0	3	0	3	1.7%
COCONINO	5	6	9	0	20	11.4%
GILA	1	0	1	0	2	1.1%
GRAHAM	0	0	0	0	0	0.0%
GREENLEE	0	0	0	0	0	0.0%
LA PAZ	0	0	0	0	0	0.0%
MARICOPA	25	32	63	0	120	68.1%
MOHAVE	3	1	0	0	4	2.3%
NAVAJO	0	2	0	0	2	1.1%
PIMA	0	9	5	0	14	8.0%
PINAL	1	0	0	0	1	0.6%
SANTA CRUZ	0	0	0	0	0	0.0%
YAVAPAI	0	2	1	0	3	1.7%
YUMA	0	2	5	0	7	4.0%
STATEWIDE	35	54	86	0	176	100.0%
% OF TOTAL	19.9%	30.7%	49.4%	0.0%	100.0%	

**TABLE 16
NUMBER OF REPORTS ASSIGNED FOR INVESTIGATION BY RISK LEVEL AND COUNTY
THAT RESULTED IN PROPOSED SUBSTANTIATION FOR PERIOD OF APRIL 1, 2006
THROUGH SEPTEMBER 30, 2006**

COUNTY	HIGH	MODERATE	LOW	POTENTIAL	TOTAL	% OF TOTAL
APACHE	0	0	0	0	0	0.0%
COCHISE	0	0	0	0	0	0.0%
COCONINO	3	0	0	0	3	13.0%
GILA	0	0	1	0	1	4.3%
GRAHAM	0	0	0	0	0	0.0%
GREENLEE	0	0	0	0	0	0.0%
LA PAZ	0	0	0	0	0	0.0%
MARICOPA	3	5	8	0	16	69.7%
MOHAVE	0	0	0	0	0	0.0%
NAVAJO	0	0	0	0	0	0.0%
PIMA	0	1	1	0	2	8.7%
PINAL	0	1	0	0	1	4.3%
SANTA CRUZ	0	0	0	0	0	0.0%
YAVAPAI	0	0	0	0	0	0.0%
YUMA	0	0	0	0	0	0.0%
STATEWIDE	6	7	10	0	23	100.0%
% OF TOTAL	26.1%	30.4%	43.5%	0%	100.0%	

**CHART 11
NUMBER OF REPORTS ASSIGNED FOR INVESTIGATION BY TYPE OF MALTREATMENT
THAT RESULTED IN PROPOSED SUBSTANTIATION**

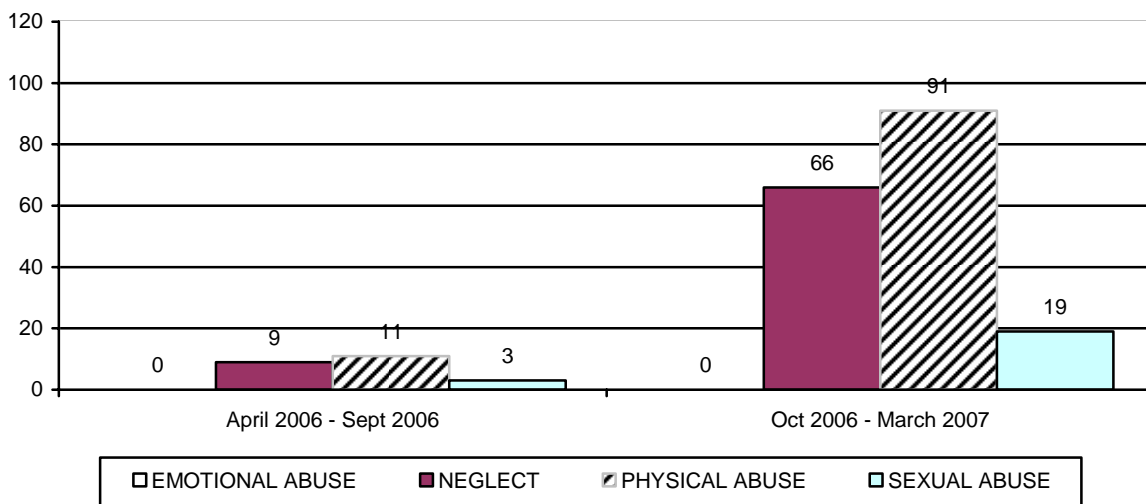


TABLE 17
NUMBER OF REPORTS ASSIGNED FOR INVESTIGATION BY TYPE OF MALTREATMENT
BY COUNTY THAT RESULTED IN PROPOSED SUBSTANTIATION FOR PERIOD OF
OCTOBER 1, 2006 THROUGH MARCH 31, 2007

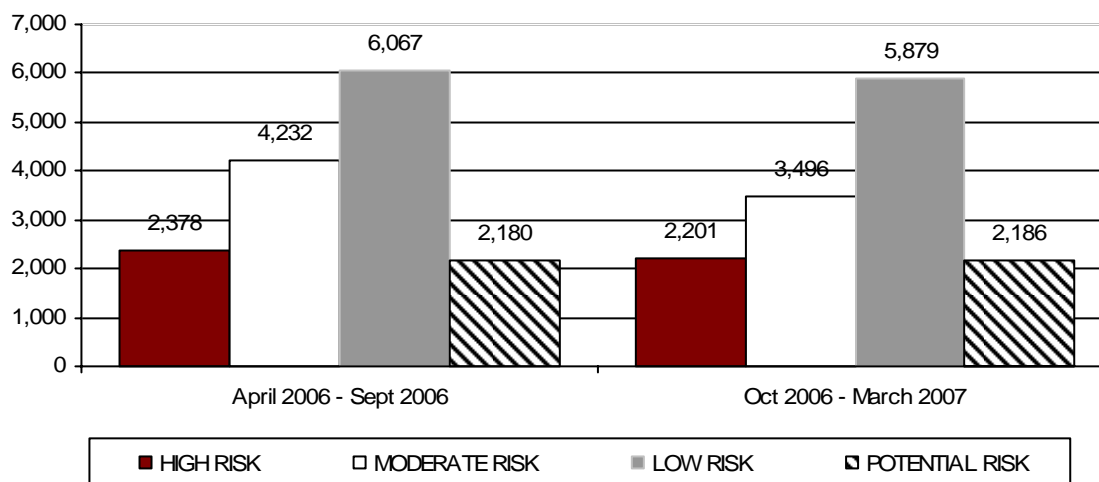
COUNTY	EMOTIONAL ABUSE	NEGLECT	PHYSICAL ABUSE	SEXUAL ABUSE	TOTAL	% OF TOTAL
APACHE	0	0	0	0	0	0.0%
COCHISE	0	1	2	0	3	1.7%
COCONINO	0	10	6	4	20	11.4%
GILA	0	2	0	0	2	1.1%
GRAHAM	0	0	0	0	0	0.0%
GREENLEE	0	0	0	0	0	0.0%
LA PAZ	0	0	0	0	0	0.0%
MARICOPA	0	39	68	13	120	68.1%
MOHAVE	0	3	1	0	4	2.3%
NAVAJO	0	1	1	0	2	1.1%
PIMA	0	4	8	2	14	8.0%
PINAL	0	0	1	0	1	0.6%
SANTA CRUZ	0	0	0	0	0	0.0%
YAVAPAI	0	2	1	0	3	1.7%
YUMA	0	4	3	0	7	4.0%
STATEWIDE	0	66	91	19	176	100.0%
% OF TOTAL	0%	37.5%	51.7%	10.8%	100.0%	

TABLE 18
NUMBER OF REPORTS ASSIGNED FOR INVESTIGATION BY TYPE OF MALTREATMENT
BY COUNTY THAT RESULTED IN PROPOSED SUBSTANTIATION FOR PERIOD OF APRIL
1, 2006 THROUGH SEPTEMBER 31, 2006

COUNTY	EMOTIONAL ABUSE	NEGLECT	PHYSICAL ABUSE	SEXUAL ABUSE	TOTAL	% OF TOTAL
APACHE	0	0	0	0	0	0.0%
COCHISE	0	0	0	0	0	0.0%
COCONINO	0	3	0	0	3	13.0%
GILA	0	1	0	0	1	4.3%
GRAHAM	0	0	0	0	0	0.0%
GREENLEE	0	0	0	0	0	0.0%
LA PAZ	0	0	0	0	0	0.0%
MARICOPA	0	4	9	3	16	69.7%
MOHAVE	0	0	0	0	0	0.0%
NAVAJO	0	0	0	0	0	0.0%
PIMA	0	0	2	0	2	8.7%
PINAL	0	1	0	0	1	4.3%
SANTA CRUZ	0	0	0	0	0	0.0%
YAVAPAI	0	0	0	0	0	0.0%
YUMA	0	0	0	0	0	0.0%
STATEWIDE	0	9	11	3	23	100.0%
% OF TOTAL	0%	39.1%	47.9%	13.0%	100.0%	

The preliminary number of CPS investigations that resulted in an unsubstantiated finding for this reporting period was 13,762. For the prior reporting period, the number of CPS reports that were unsubstantiated was revised from 12,090 to 14,857 to reflect updated information into the CHILDS case management information system. For the prior reporting period, 16.0 percent of unsubstantiated reports were classified as high risk, 28.5 percent as moderate risk, 40.8 percent as low risk, and 14.7 percent as potential risk. Just over one percent (1.3) of these unsubstantiated reports related to emotional abuse, 61.2 percent to neglect, 31.5 percent to physical abuse, and 6.0 percent to sexual abuse.

**CHART 12
NUMBER OF REPORTS ASSIGNED FOR INVESTIGATION BY RISK LEVEL AND REPORTING PERIOD THAT RESULTED IN UNSUBSTANTIATION**



**TABLE 19
NUMBER OF REPORTS ASSIGNED FOR INVESTIGATION BY RISK LEVEL AND COUNTY THAT RESULTED IN UNSUBSTANTIATION FOR PERIOD OF OCTOBER 1, 2006 THROUGH MARCH 31, 2007**

COUNTY	HIGH	MODERATE	LOW	POTENTIAL	TOTAL	% OF TOTAL
APACHE	6	13	20	5	44	0.3%
COCHISE	66	92	171	50	379	2.8%
COCONINO	34	55	95	36	220	1.6%
GILA	31	39	52	16	138	1.0%
GRAHAM	7	31	36	11	85	0.6%
GREENLEE	1	3	8	4	16	0.1%
LA PAZ	9	10	22	4	45	0.3%
MARICOPA	1,437	2,038	3,412	1,301	8,188	59.5%
MOHAVE	73	163	215	73	524	3.8%
NAVAJO	29	59	118	42	248	1.8%
PIMA	220	514	993	366	2,093	15.2%
PINAL	144	238	332	145	859	6.2%
SANTA CRUZ	24	16	41	9	90	0.7%
YAVAPAI	57	124	207	79	467	3.4%
YUMA	63	101	157	45	366	2.7%
STATEWIDE	2,201	3,496	5,879	2,186	13,762	100.0%
% OF TOTAL	16.0%	25.4%	42.7%	15.9%	100.0%	

**TABLE 20
NUMBER OF REPORTS ASSIGNED FOR INVESTIGATION BY RISK LEVEL AND COUNTY
THAT RESULTED IN UNSUBSTANTIATION FOR PERIOD OF APRIL 1, 2006 THROUGH
SEPTEMBER 30, 2006**

COUNTY	HIGH	MODERATE	LOW	POTENTIAL	TOTAL	% OF TOTAL
APACHE	5	14	34	7	60	0.4%
COCHISE	55	92	152	49	348	2.3%
COCONINO	32	61	71	17	181	1.2%
GILA	21	39	57	17	134	0.9%
GRAHAM	8	24	35	11	78	0.5%
GREENLEE	1	3	8	3	15	0.1%
LA PAZ	5	16	22	6	49	0.3%
MARICOPA	1,597	2,546	3,438	1,239	8,820	59.5%
MOHAVE	71	199	223	59	552	3.7%
NAVAJO	26	52	101	35	214	1.4%
PIMA	269	666	1,197	456	2,588	17.5%
PINAL	162	235	339	114	850	5.7%
SANTA CRUZ	10	26	33	5	74	0.5%
YAVAPAI	64	173	234	106	577	3.9%
YUMA	52	86	123	56	317	2.1%
STATEWIDE	2,378	4,232	6,067	2,180	14,857	100.0%
% OF TOTAL	16.0%	28.5%	40.8%	14.7%	100.0%	

**CHART 13
NUMBER OF REPORTS ASSIGNED FOR INVESTIGATION BY TYPE OF MALTREATMENT
THAT RESULTED IN UNSUBSTANTIATION BY REPORTING PERIOD**

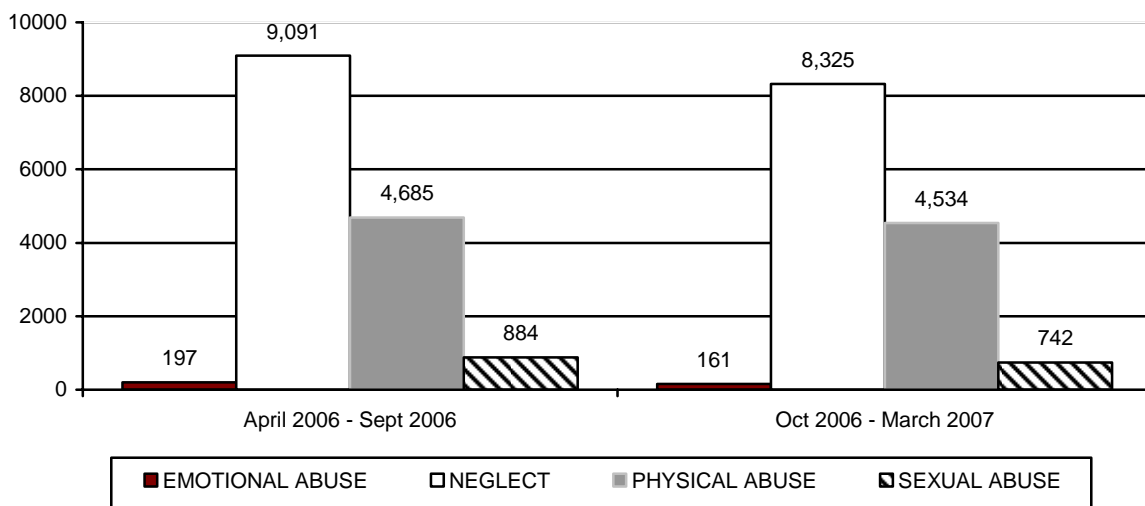


TABLE 21
NUMBER OF REPORTS ASSIGNED FOR INVESTIGATION BY TYPE OF MALTREATMENT
BY COUNTY THAT RESULTED IN UNSUBSTANTIATION FOR PERIOD OF OCTOBER 1,
2006 THROUGH MARCH 31, 2007

COUNTY	EMOTIONAL ABUSE	NEGLECT	PHYSICAL ABUSE	SEXUAL ABUSE	TOTAL	% OF TOTAL
APACHE	1	27	13	3	44	0.3%
COCHISE	9	241	112	17	379	2.8%
COCONINO	4	129	77	10	220	1.6%
GILA	0	94	35	9	138	1.0%
GRAHAM	2	52	27	4	85	0.6%
GREENLEE	0	8	8	0	16	0.1%
LA PAZ	1	36	8	0	45	0.3%
MARICOPA	85	4,941	2,689	473	8,188	59.5%
MOHAVE	2	319	176	27	524	3.8%
NAVAJO	4	138	93	13	248	1.8%
PIMA	34	1,222	753	84	2,093	15.2%
PINAL	7	524	270	58	859	6.2%
SANTA CRUZ	0	59	30	1	90	0.7%
YAVAPAI	8	290	142	27	467	3.4%
YUMA	4	245	101	16	366	2.7%
STATEWIDE	161	8,325	4,534	742	13,762	100.0%
% OF TOTAL	1.2%	60.5%	32.9%	5.4%	100.0%	

TABLE 22
NUMBER OF REPORTS ASSIGNED FOR INVESTIGATION BY TYPE OF MALTREATMENT
BY COUNTY THAT RESULTED IN UNSUBSTANTIATION FOR PERIOD OF APRIL 1, 2006
THROUGH SEPTEMBER 30, 2006

COUNTY	EMOTIONAL ABUSE	NEGLECT	PHYSICAL ABUSE	SEXUAL ABUSE	TOTAL	% OF TOTAL
APACHE	0	42	11	7	60	0.4%
COCHISE	8	213	112	15	348	2.3%
COCONINO	3	110	57	11	181	1.2%
GILA	1	88	38	7	134	0.9%
GRAHAM	2	45	26	5	78	0.5%
GREENLEE	1	10	3	1	15	0.1%
LA PAZ	0	32	16	1	49	0.3%
MARICOPA	99	5,343	2,827	551	8,820	59.5%
MOHAVE	3	365	154	30	552	3.7%
NAVAJO	3	124	75	12	214	1.4%
PIMA	57	1,592	811	128	2,588	17.5%
PINAL	7	520	265	58	850	5.7%
SANTA CRUZ	0	35	34	5	74	0.5%
YAVAPAI	9	367	167	34	577	3.9%
YUMA	4	205	89	19	317	2.1%
STATEWIDE	197	9,091	4,685	884	14,857	100.0%
% OF TOTAL	1.3%	61.2%	31.5%	6.0%	100.0%	

CHART 14
NUMBER OF REPORTS ASSIGNED FOR INVESTIGATION BY RISK LEVEL AND REPORTING PERIOD FOR REPORTS STILL OPEN FOR INVESTIGATION

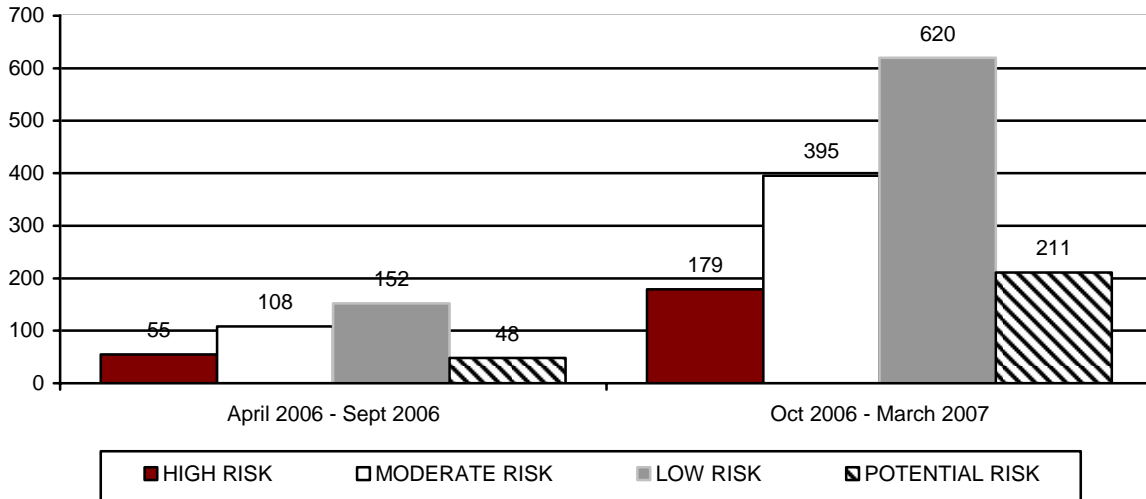


TABLE 23
NUMBER OF REPORTS BY RISK LEVEL AND COUNTY FOR REPORTS STILL OPEN FOR INVESTIGATION FOR PERIOD OF OCTOBER 1, 2006 THROUGH MARCH 31, 2007

COUNTY	HIGH	MODERATE	LOW	POTENTIAL	TOTAL	% OF TOTAL
APACHE	3	8	9	6	26	1.9%
COCHISE	0	0	0	0	0	0.0%
COCONINO	4	15	14	7	40	2.8%
GILA	0	0	0	0	0	0.0%
GRAHAM	0	0	0	0	0	0.0%
GREENLEE	0	0	0	0	0	0.0%
LA PAZ	0	0	0	0	0	0.0%
MARICOPA	125	215	308	116	764	54.4%
MOHAVE	0	1	1	0	2	0.1%
NAVAJO	3	3	3	2	11	0.8%
PIMA	43	151	284	79	557	39.6%
PINAL	0	0	0	0	0	0.0%
SANTA CRUZ	0	0	0	0	0	0.0%
YAVAPAI	1	2	1	1	5	0.4%
YUMA	0	0	0	0	0	0.0%
STATEWIDE	179	395	620	211	1,405	100.0%
% OF TOTAL	12.7%	28.1%	44.2%	15.0%	100.0%	

TABLE 24
NUMBER OF REPORTS BY RISK LEVEL AND COUNTY FOR REPORTS STILL OPEN FOR INVESTIGATION FOR PERIOD OF APRIL 1, 2006 THROUGH SEPTEMBER 30, 2006

COUNTY	HIGH	MODERATE	LOW	POTENTIAL	TOTAL	% OF TOTAL
APACHE	0	0	0	0	0	0.0%
COCHISE	0	0	0	0	0	0.0%
COCONINO	9	28	29	17	83	22.9%
GILA	0	0	0	0	0	0.0%
GRAHAM	0	0	0	0	0	0.0%
GREENLEE	0	0	0	0	0	0.0%
LA PAZ	0	0	0	0	0	0.0%
MARICOPA	36	54	82	20	192	52.8%
MOHAVE	0	0	0	0	0	0.0%
NAVAJO	0	0	0	0	0	0.0%
PIMA	7	23	39	9	78	21.5%
PINAL	0	0	0	0	0	0.0%
SANTA CRUZ	0	0	0	0	0	0.0%
YAVAPAI	3	3	2	2	10	2.8%
YUMA	0	0	0	0	0	0.0%
STATEWIDE	55	108	152	48	363	100.0%
% OF TOTAL	15.2%	29.8%	41.8%	13.2%	100.0%	

CHART 15
NUMBER OF REPORTS ASSIGNED FOR INVESTIGATION BY TYPE OF MALTREATMENT FOR REPORTS STILL OPEN FOR INVESTIGATION

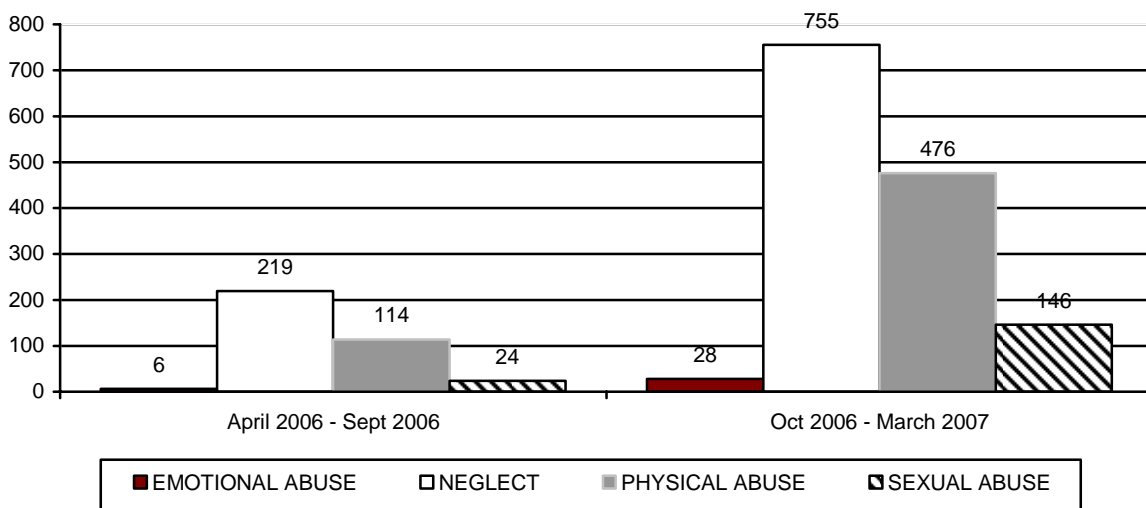


TABLE 25
NUMBER OF REPORTS BY TYPE OF MALTREATMENT AND COUNTY FOR REPORTS
STILL OPEN FOR INVESTIGATION FOR PERIOD OF OCTOBER 1, 2006 THROUGH
MARCH 31, 2007

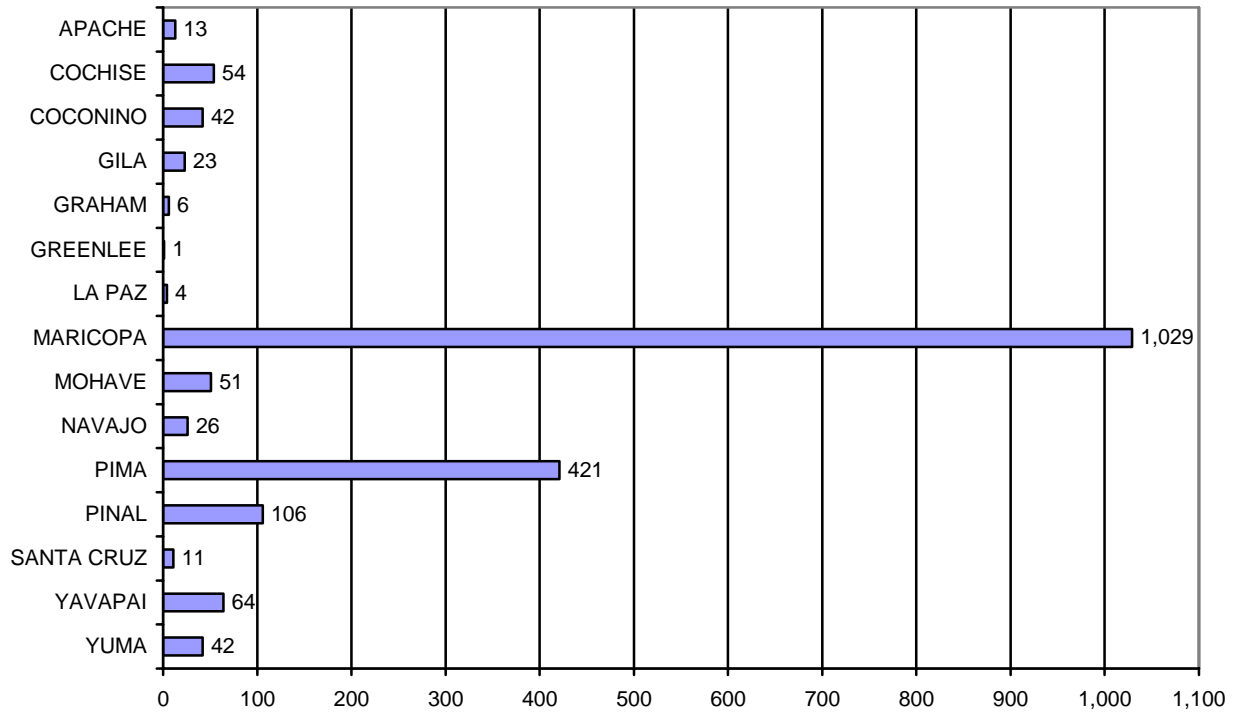
COUNTY	EMOTIONAL ABUSE	NEGLECT	PHYSICAL ABUSE	SEXUAL ABUSE	TOTAL	% OF TOTAL
APACHE	1	15	7	3	26	1.9%
COCHISE	0	0	0	0	0	0.0%
COCONINO	0	19	16	5	40	2.8%
GILA	0	0	0	0	0	0.0%
GRAHAM	0	0	0	0	0	0.0%
GREENLEE	0	0	0	0	0	0.0%
LA PAZ	0	0	0	0	0	0.0%
MARICOPA	13	424	270	57	764	54.4%
MOHAVE	0	2	0	0	2	0.1%
NAVAJO	0	9	1	1	11	0.8%
PIMA	14	282	182	79	557	39.6%
PINAL	0	0	0	0	0	0.0%
SANTA CRUZ	0	0	0	0	0	0.0%
YAVAPAI	0	4	0	1	5	0.4%
YUMA	0	0	0	0	0	0.0%
STATEWIDE	28	755	476	146	1,405	100.0%
% OF TOTAL	2.0%	53.7%	33.9%	10.4%	100.0%	

TABLE 26
NUMBER OF REPORTS BY TYPE OF MALTREATMENT AND COUNTY FOR REPORTS
STILL OPEN FOR INVESTIGATION FOR PERIOD OF APRIL 1, 2006 THROUGH
SEPTEMBER 30, 2006

COUNTY	EMOTIONAL ABUSE	NEGLECT	PHYSICAL ABUSE	SEXUAL ABUSE	TOTAL	% OF TOTAL
APACHE	0	0	0	0	0	0.0%
COCHISE	0	0	0	0	0	0.0%
COCONINO	3	55	23	2	83	22.9%
GILA	0	0	0	0	0	0.0%
GRAHAM	0	0	0	0	0	0.0%
GREENLEE	0	0	0	0	0	0.0%
LA PAZ	0	0	0	0	0	0.0%
MARICOPA	2	112	62	16	192	52.8%
MOHAVE	0	0	0	0	0	0.0%
NAVAJO	0	0	0	0	0	0.0%
PIMA	1	45	26	6	78	21.5%
PINAL	0	0	0	0	0	0.0%
SANTA CRUZ	0	0	0	0	0	0.0%
YAVAPAI	0	7	3	0	10	2.8%
YUMA	0	0	0	0	0	0.0%
STATEWIDE	6	219	114	24	363	100.0%
% OF TOTAL	1.7%	60.3%	31.4%	6.6%	100.0%	

The number of children entering out-of-home care has stabilized since October 2005. During this reporting period, 3,683 children entered care as compared to 3,753 children for the October 2005 through March 2006 reporting period. Chart 17 displays children entering out-of-home care by reporting period. The number of children entering out-of-home placement through voluntary foster care agreements for this reporting period was 398 which represents 10.8 percent of those children entering.

**CHART 16
NUMBER OF REPORTS ASSIGNED FOR INVESTIGATION WHERE A REMOVAL OCCURRED**

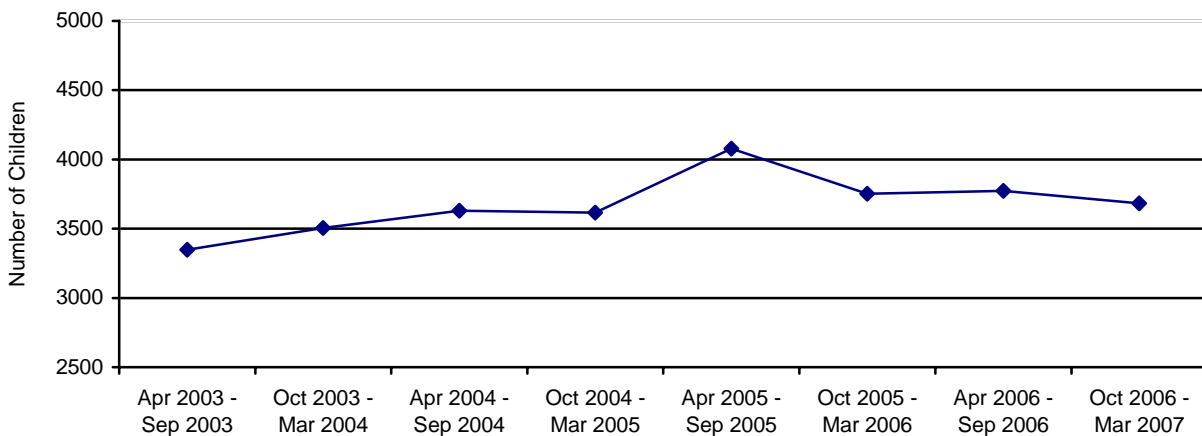


**TABLE 27
NUMBER OF REPORTS ASSIGNED FOR INVESTIGATION BY COUNTY WHERE A
REMOVAL OCCURRED**

COUNTY	NUMBER OF REPORTS ASSIGNED	NUMBER OF REPORTS ASSIGNED WITH A REMOVAL	% OF REPORTS WHERE A CHILD WAS PLACED IN OUT-OF-HOME CARE
APACHE	76	13	17.1%
COCHISE	426	54	12.7%
COCONINO	325	42	12.9%
GILA	148	23	15.5%
GRAHAM	92	6	6.5%
GREENLEE	17	1	5.9%
LA PAZ	48	4	8.3%
MARICOPA	9,533	1,029	10.8%
MOHAVE	572	51	8.9%
NAVAJO	274	26	9.5%
PIMA	2,961	421	14.2%
PINAL	923	106	11.5%
SANTA CRUZ	98	11	11.2%
YAVAPAI	526	64	12.2%
YUMA	403	42	10.4%
STATEWIDE	16,422	1,893	11.5%

CHILDREN ENTERING OUT-OF-HOME CARE

**CHART 17
TOTAL CHILDREN ENTERING OUT-OF-HOME CARE BY REPORTING PERIOD**



There were no newborn infants delivered to Safe Haven providers during the October 2006 - March 2007 reporting period. This compares to no infants being delivered to Safe Haven providers during the April 2006 - September 2006 reporting period.

Table 28 shows the number of children entering out-of-home care for the current reporting period by county. The table also shows the children entering care, the number of children who entered the foster care system through a voluntary placement and were under the age of 18. Voluntary foster care may be provided when the parents or legal guardians of a child have requested such assistance and have signed a legally binding written agreement, not to exceed 90 days, for the temporary placement of the child in foster care while risk factors are addressed to enable the child to live safely at home. A voluntary foster care agreement may be utilized only when the circumstances that brought the child into foster care are likely to be remedied within the 90 day period of time. A.R.S. §8-806 authorizes the Department to provide voluntary foster care placement for children for a period not to exceed 90 days and no more than two periods within 24 consecutive months.

TABLE 28
NUMBER OF CHILDREN ENTERING OUT-OF-HOME CARE BY COUNTY WHO ARE
VOLUNTARY PLACEMENTS FOR CHILDREN UNDER THE AGE OF EIGHTEEN FOR THE
PERIOD OF OCTOBER 1, 2006 THROUGH MARCH 31, 2007

COUNTY	NUMBER OF CHILDREN REMOVED	% OF TOTAL REMOVALS	NUMBER OF CHILDREN ENTERING OUT-OF-HOME CARE UNDER THE AGE OF EIGHTEEN WHO ARE VOLUNTARY PLACEMENTS	% OF CHILDREN REMOVED WHO ARE VOLUNTARY PLACEMENTS
APACHE	26	0.7%	14	53.8%
COCHISE	92	2.5%	5	5.4%
COCONINO	77	2.1%	10	13.0%
GILA	47	1.3%	0	0.0%
GRAHAM	10	0.3%	0	0.0%
GREENLEE	1	<0.1%	0	0.0%
LA PAZ	4	0.1%	2	50.0%
MARICOPA	2,013	54.7%	247	12.3%
MOHAVE	90	2.4%	26	28.9%
NAVAJO	47	1.3%	17	36.2%
PIMA	804	21.8%	52	6.5%
PINAL	227	6.2%	4	1.8%
SANTA CRUZ	20	0.5%	1	5.0%
YAVAPAI	124	3.4%	5	4.0%
YUMA	101	2.7%	15	14.9%
STATEWIDE	3,683	100.0%	398	10.8%

TABLE 29
NUMBER OF CHILDREN ENTERING OUT-OF-HOME CARE BY COUNTY WHO ARE
VOLUNTARY PLACEMENTS FOR CHILDREN UNDER THE AGE OF EIGHTEEN FOR THE
PERIOD OF APRIL 1, 2006 THROUGH SEPTEMBER 30, 2006

COUNTY	NUMBER OF CHILDREN REMOVED	% OF TOTAL REMOVALS	NUMBER OF CHILDREN ENTERING OUT-OF-HOME CARE UNDER THE AGE OF EIGHTEEN WHO ARE VOLUNTARY PLACEMENTS	% OF CHILDREN REMOVED WHO ARE VOLUNTARY PLACEMENTS
APACHE	19	0.5%	6	31.5%
COCHISE	80	2.1%	2	2.5%
COCONINO	73	1.9%	9	12.3%
GILA	46	1.2%	1	2.2%
GRAHAM	23	0.6%	2	8.7%
GREENLEE	1	<0.1%	1	100.0%
LA PAZ	0	0.0%	0	0.0%
MARICOPA	2,013	53.4%	250	12.4%
MOHAVE	78	2.1%	21	26.9%
NAVAJO	45	1.2%	12	26.7%
PIMA	853	22.6%	45	5.3%
PINAL	271	7.2%	8	3.0%
SANTA CRUZ	22	0.6%	8	36.4%
YAVAPAI	150	4.0%	13	8.7%
YUMA	99	2.6%	8	8.1%
STATEWIDE	3,773	100.0%	386	10.2%

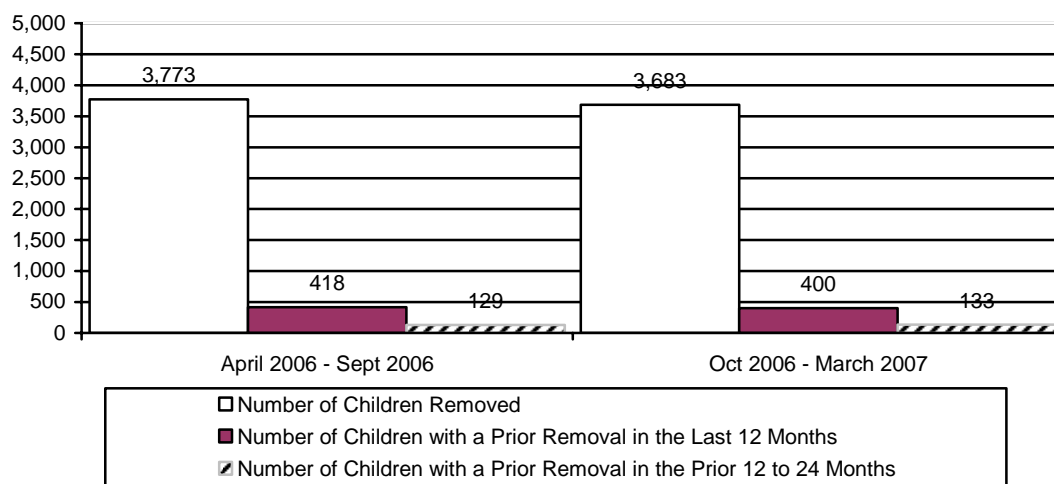
**TABLE 30
NUMBER OF CHILDREN ENTERING OUT-OF-HOME CARE BY COUNTY FOR THE
PERIOD OF OCTOBER 1, 2006 THROUGH MARCH 31, 2007**

COUNTY	NUMBER OF CHILDREN REMOVED	% OF TOTAL REMOVALS	NUMBER OF CHILDREN WITH A PRIOR REMOVAL IN THE LAST 12 MONTHS	% OF CHILDREN WITH A PRIOR REMOVAL IN THE LAST 12 MONTHS	NUMBER OF CHILDREN WITH A REMOVAL IN THE PRIOR 12 TO 24 MONTHS	% OF CHILDREN WITH A PRIOR REMOVAL IN THE PRIOR 12 TO 24 MONTHS
APACHE	26	0.7%	1	3.8%	1	3.8%
COCHISE	92	2.5%	4	4.3%	7	7.6%
COCONINO	77	2.1%	3	3.9%	0	0.0%
GILA	47	1.3%	10	21.3%	2	4.3%
GRAHAM	10	0.3%	0	0.0%	0	0.0%
GREENLEE	1	<0.1%	0	0.0%	0	0.0%
LA PAZ	4	0.1%	0	0.0%	0	0.0%
MARICOPA	2,013	54.7%	235	11.7%	73	3.6%
MOHAVE	90	2.4%	2	2.2%	6	6.7%
NAVAJO	47	1.3%	7	14.9%	0	0.0%
PIMA	804	21.8%	94	11.7%	32	4.0%
PINAL	227	6.2%	19	8.4%	6	2.6%
SANTA CRUZ	20	0.5%	5	25.0%	0	0.0%
YAVAPAI	124	3.4%	13	10.5%	6	4.8%
YUMA	101	2.7%	7	6.9%	0	0.0%
STATEWIDE	3,683	100.0%	400	10.9%	133	3.6%

TABLE 31
NUMBER OF CHILDREN ENTERING OUT-OF-HOME CARE BY COUNTY FOR THE
PERIOD OF APRIL 1, 2006 THROUGH SEPTEMBER 30, 2006³

COUNTY	NUMBER OF CHILDREN REMOVED	% OF TOTAL REMOVALS	NUMBER OF CHILDREN WITH A PRIOR REMOVAL IN THE LAST 12 MONTHS	% OF CHILDREN WITH A PRIOR REMOVAL IN THE LAST 12 MONTHS	NUMBER OF CHILDREN WITH A REMOVAL IN THE PRIOR 12 TO 24 MONTHS	% OF CHILDREN WITH A PRIOR REMOVAL IN THE PRIOR 12 TO 24 MONTHS
APACHE	19	0.5%	1	5.3%	1	5.3%
COCHISE	80	2.1%	14	17.5%	4	5.0%
COCONINO	73	1.9%	3	4.1%	2	2.7%
GILA	46	1.2%	8	17.4%	1	2.2%
GRAHAM	23	0.6%	6	26.1%	1	4.3%
GREENLEE	1	<0.1%	1	100.0%	0	0.0%
LA PAZ	0	0.0%	0	0.0%	0	0.0%
MARICOPA	2,013	53.4%	228	11.3%	78	3.9%
MOHAVE	78	2.1%	12	15.4%	2	2.6%
NAVAJO	45	1.2%	3	6.7%	1	2.2%
PIMA	853	22.6%	104	12.2%	35	4.1%
PINAL	271	7.2%	21	7.7%	4	1.5%
SANTA CRUZ	22	0.6%	2	9.1%	0	0.0%
YAVAPAI	150	4.0%	12	8.0%	1	0.7%
YUMA	99	2.6%	3	3.0%	0	0.0%
STATEWIDE	3,773	100.0%	418	11.1%	129	3.4%

CHART 18
NUMBER OF CHILDREN ENTERING OUT-OF-HOME CARE BY REPORTING PERIOD



³ These numbers differ from those reported in the April, 1 2006 through September 30, 2006 report. This is due to a change in the methodology for calculating the numbers. The new methodology is consistent with Federal methodologies.

The Department recognizes that the unwarranted re-entry into foster care is something to be avoided. We continue to undertake steps to ensure that these re-entries are in the best interests of the child and family. The Department has begun collaborating with the Chapin-Hall Center for Children on a measure to aide the Department in identifying key factors in re-entry into foster care. This will enable the Department to utilize cohort data and help to identify if changes are needed in our policy or practices.

CHILDREN IN-OUT-OF-HOME CARE

On March 31, 2007, there were 9,773 children in out-of-home care as compared to 9,833 children on September 30, 2006, a decrease of 60 children. During this reporting period, 7,410 children or 75.8 percent were placed in family settings either with relatives or in foster homes. This compares to 7,425 or 75.5 percent of the children in the prior reporting period.

**CHART 19
NUMBER OF CHILDREN IN OUT-OF-HOME CARE ON THE LAST DAY OF THE REPORTING PERIOD BY REPORTING PERIOD**

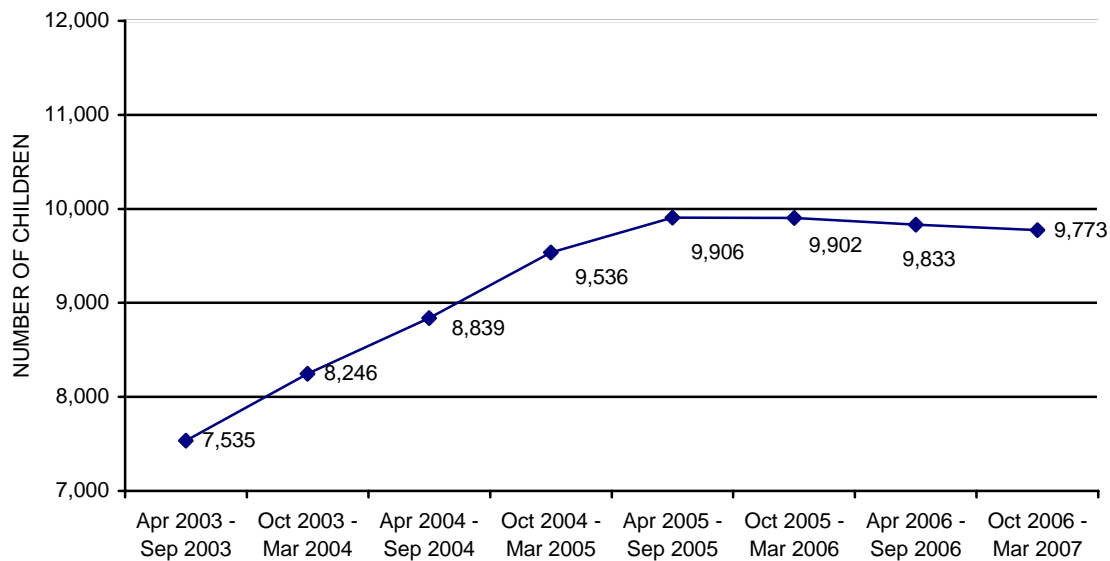
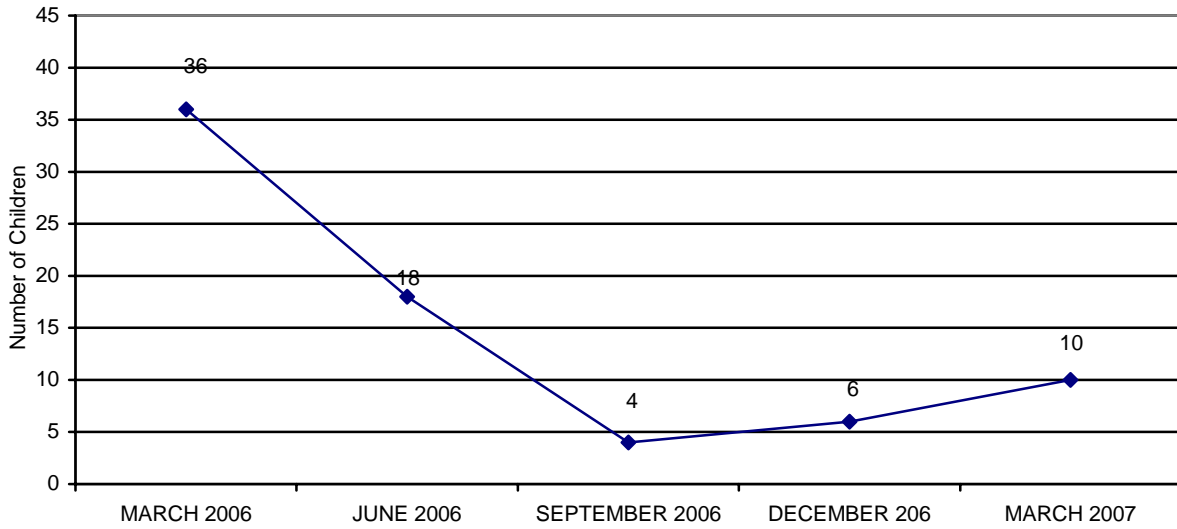


Chart 20 displays the decrease in the number of young children ages 0-6 placed in group homes. Comparing March 2006 to March 2007, the number of young children in group homes decreased by 26 children or 72.2%.

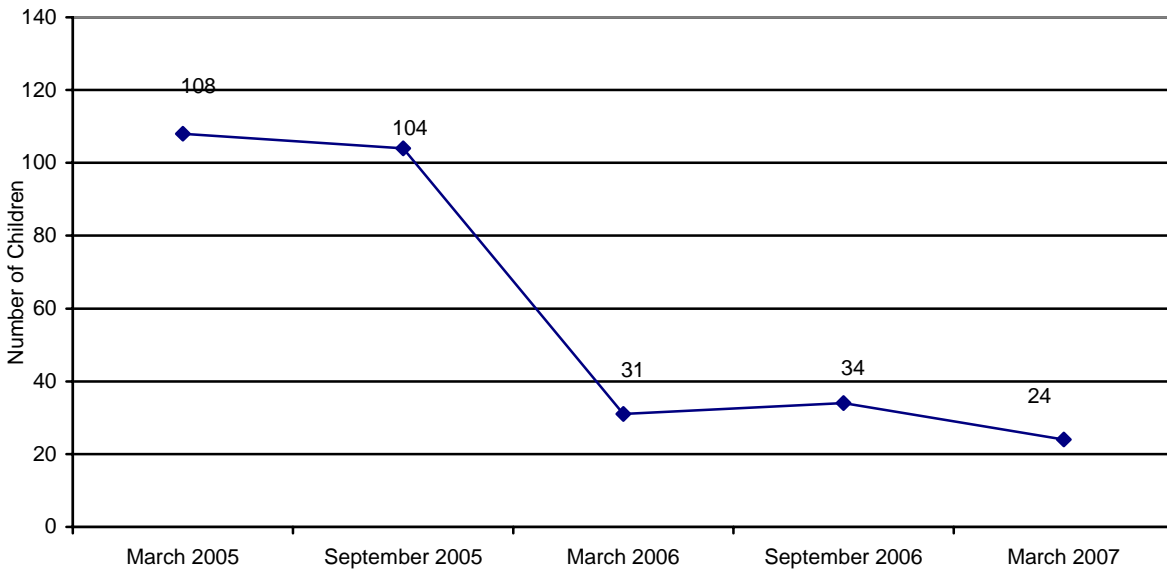
Chart 21 displays the decrease in the number of young children placed in congregate care. Comparing March 2005 to March 2007, the number of young children in shelters decreased by 84 children or 77.8%. Chart 22 shows that the average length of time in shelter care continues to decrease; comparing September 2006 to March 2007, the average length of stay in shelter decreased from 72 to 53 days, a decrease of 19 days or 26.4%.

CHART 20
THE NUMBER OF CHILDREN IN GROUP HOMES AGES 0 TO 6⁴



The majority of children in care fall within the 1-5 age range (32.1%) and the 13-17 age range (28.0%). The majority of children in care are either Caucasian (42.2%) or Hispanic (35.0%), followed by African American at 12.6 percent.

CHART 21
THE NUMBER OF CHILDREN IN SHELTER CARE AGES 0 TO 3



⁴ Excludes infants placed with their mothers and children placed in foster home group models

CHART 22
AVERAGE LENGTH OF STAY FOR CHILDREN AGES 0 TO 3, EXITING OUT-OF-HOME CARE WHO WERE IN A SHELTER PLACEMENT ON THE LAST DAY OF THE REPORTING PERIOD

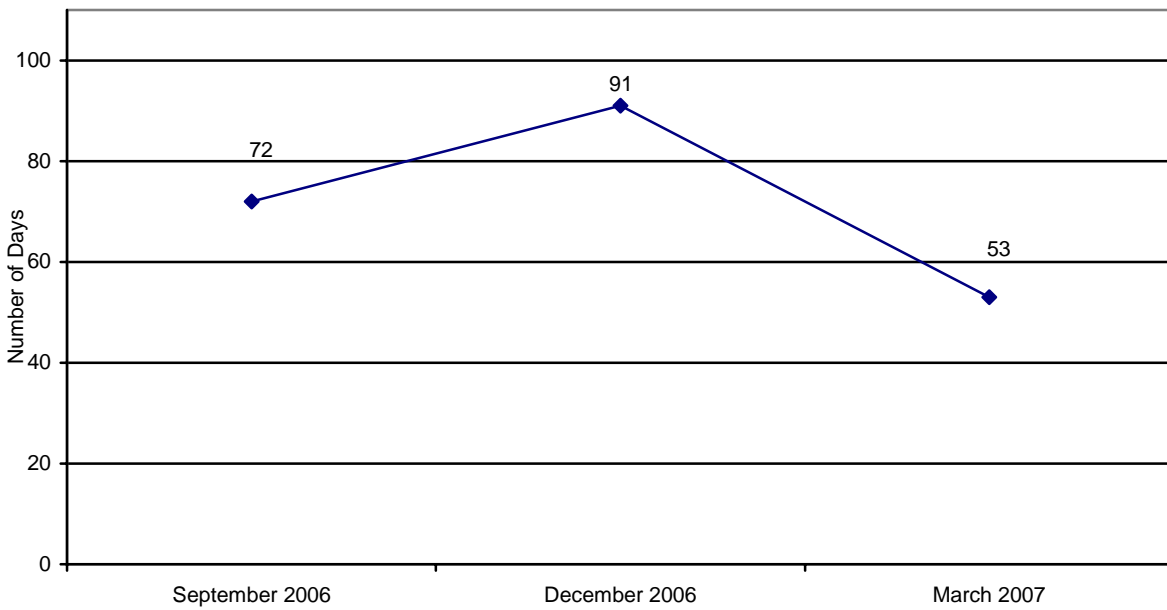
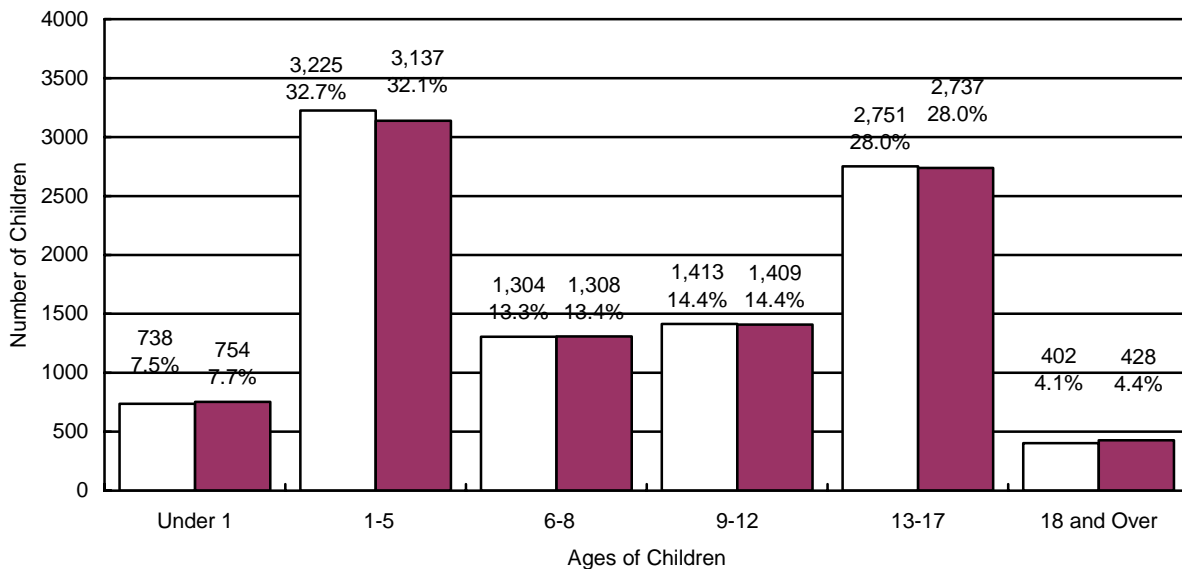
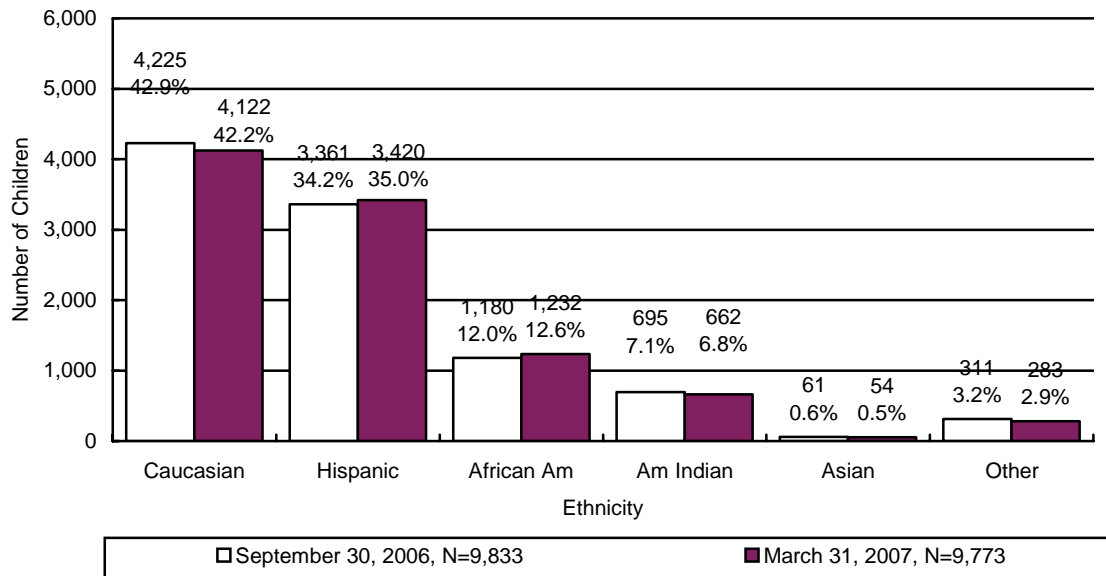


CHART 23
THE NUMBER OF CHILDREN IN OUT-OF-HOME CARE BY AGE



September 30, 2006, N=9,833
 March 31, 2007, N=9,773

CHART 24
THE NUMBER OF CHILDREN IN OUT-OF-HOME CARE BY ETHNICITY



For 48.1 percent of the children, family reunification remains the primary case plan goal. This is followed by: adoption, 25.4 percent; independent living, 13.1 percent; long-term foster care, 4.2 percent; live with other relative, 3.1 percent; and, guardianship at 0.6 percent. For the remaining 5.5 percent of the families, the case plan goal is in the process of development.

CHART 25
THE NUMBER OF CHILDREN IN OUT-OF-HOME CARE BY CASE PLAN GOAL

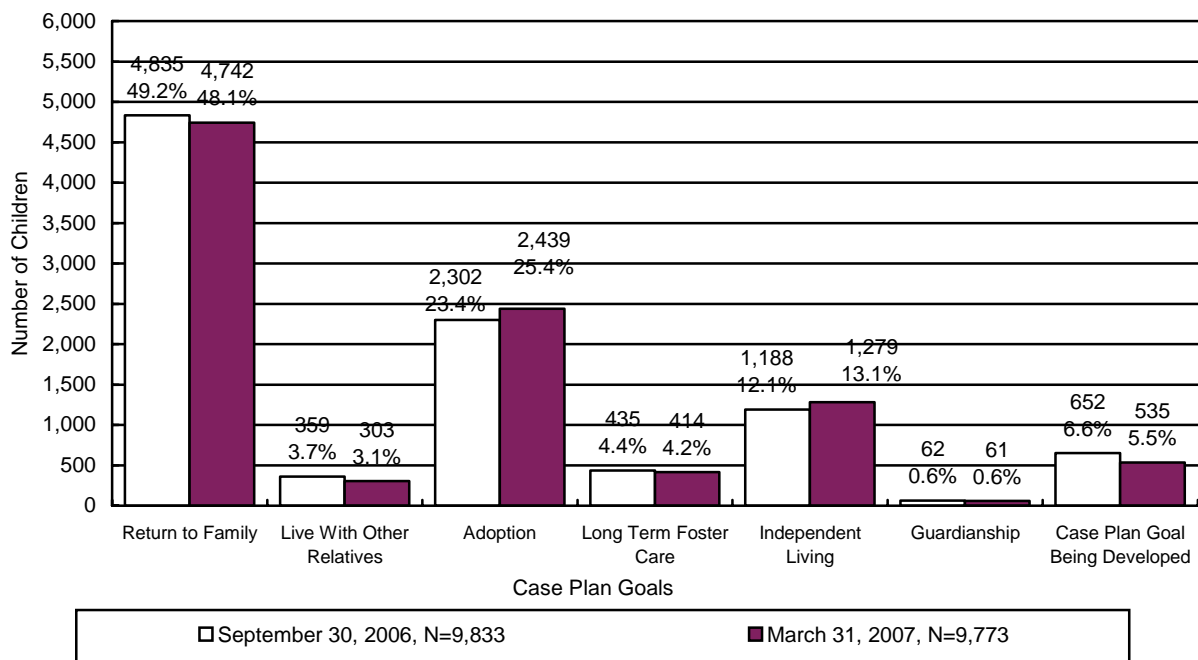


CHART 26
THE NUMBER OF CHILDREN IN OUT-OF-HOME CARE BY PLACEMENT TYPE

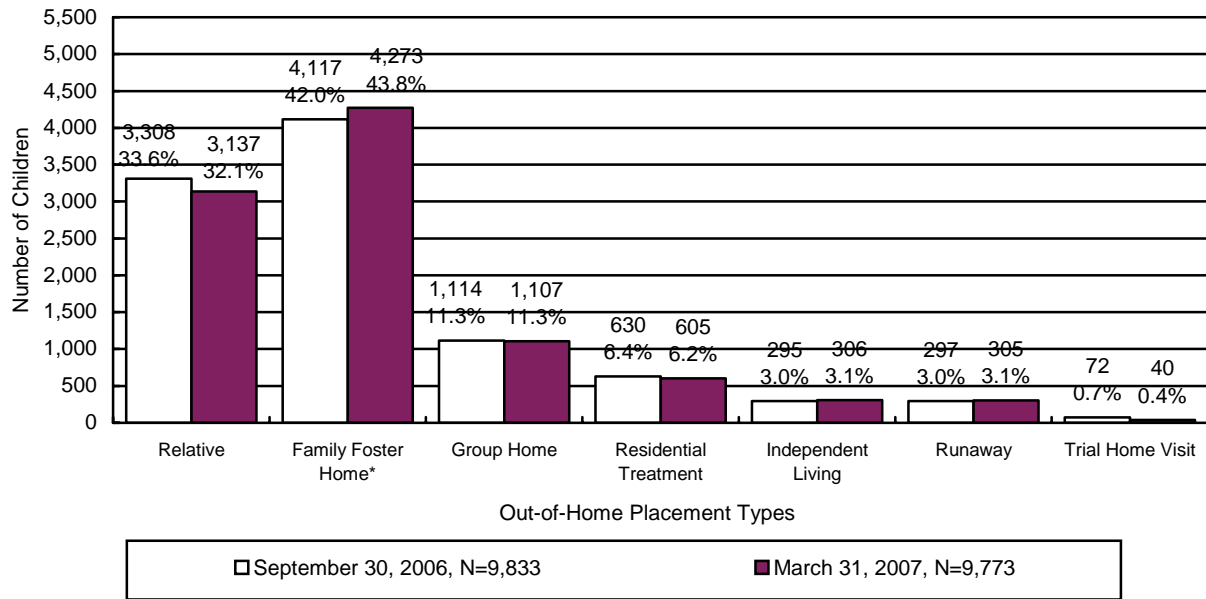


TABLE 32
THE NUMBER OF CHILDREN IN OUT-OF-HOME CARE BY PLACEMENT TYPE AND AGE

	RELATIVE	FAMILY FOSTER	GROUP HOME	RESIDENTIAL TREATMENT ⁵	INDEPENDENT LIVING	RUNAWAY ⁶	TRIAL HOME VISIT	TOTAL	% OF TOTAL
UNDER 1	256	478	8	11	0	1	0	754	7.7%
1	348	466	7	9	0	2	2	834	8.6%
2	313	376	4	4	0	1	3	701	7.2%
3	279	323	3	6	0	1	2	614	6.3%
4	231	261	9	5	0	2	0	508	5.2%
5	213	253	6	8	0	0	0	480	4.9%
6	200	240	11	6	0	0	1	458	4.7%
7	162	229	21	16	0	1	2	431	4.4%
8	180	202	21	14	0	0	2	419	4.3%
9	150	171	31	13	0	1	0	366	3.7%
10	129	178	32	14	0	0	1	354	3.6%
11	116	152	51	19	0	0	1	339	3.5%
12	108	156	64	18	0	1	3	350	3.6%
13	100	162	88	22	0	10	4	386	3.9%
14	89	154	127	79	0	33	4	486	5.0%
15	84	125	161	84	0	46	3	503	5.1%
16	81	176	213	126	0	81	5	682	7.0%
17	82	131	205	123	21	111	7	680	7.0%
18 AND OLDER	16	40	45	28	285	14	0	428	4.3%
TOTAL	3,137	4,273	1,107	605	306	305	40	9,773	100.0%
% OF TOTAL	32.1%	43.8%	11.3%	6.2%	3.1%	3.1%	0.4%	100.0%	

During the reporting period 705 children remained in a shelter or receiving home for more than 21 consecutive days. Chart 27 displays children in shelter greater than 21 days for the period of October 1, 2006 through March 31, 2007 and shows that 557 or 79.0 percent of the children were six years of age or older. In addition, 29 or 4.1 percent of the children were under one year.

⁵ This category includes shelter, detention, and hospital placement types.

⁶ Of the children age twelve or less, one child was on runaway status. The remaining nine were last reported to be with their parents. Police reports have been filed but the families have not been located.

CHART 27
NUMBER AND PERCENTAGE OF CHILDREN IN SHELTER OR RECEIVING HOMES FOR MORE THAN 21 CONSECUTIVE DAYS BY AGE OF CHILD⁷

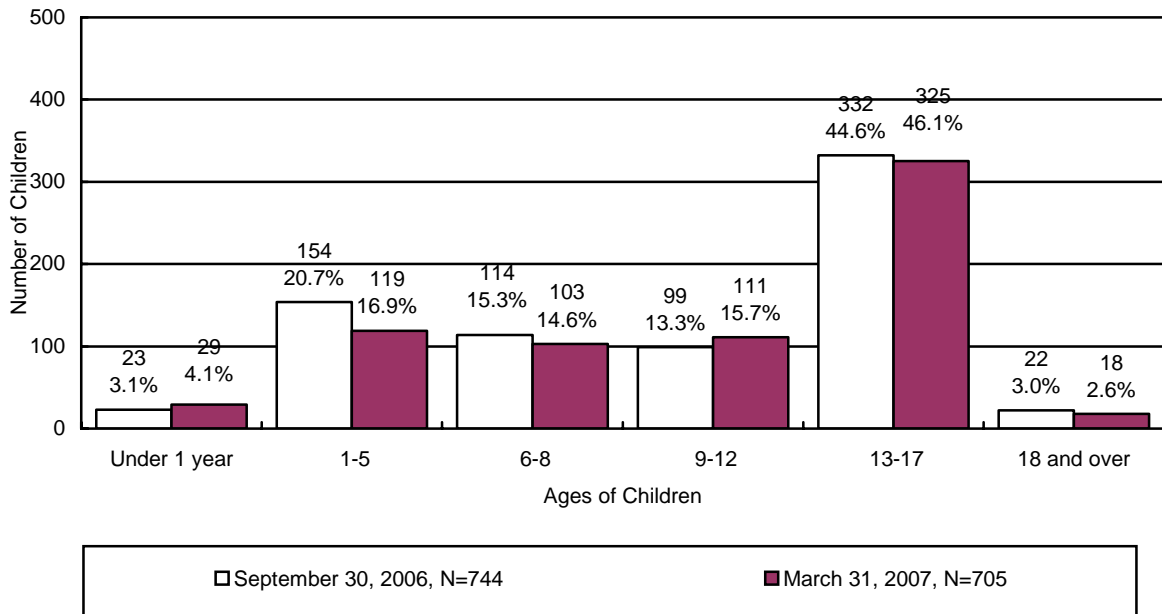
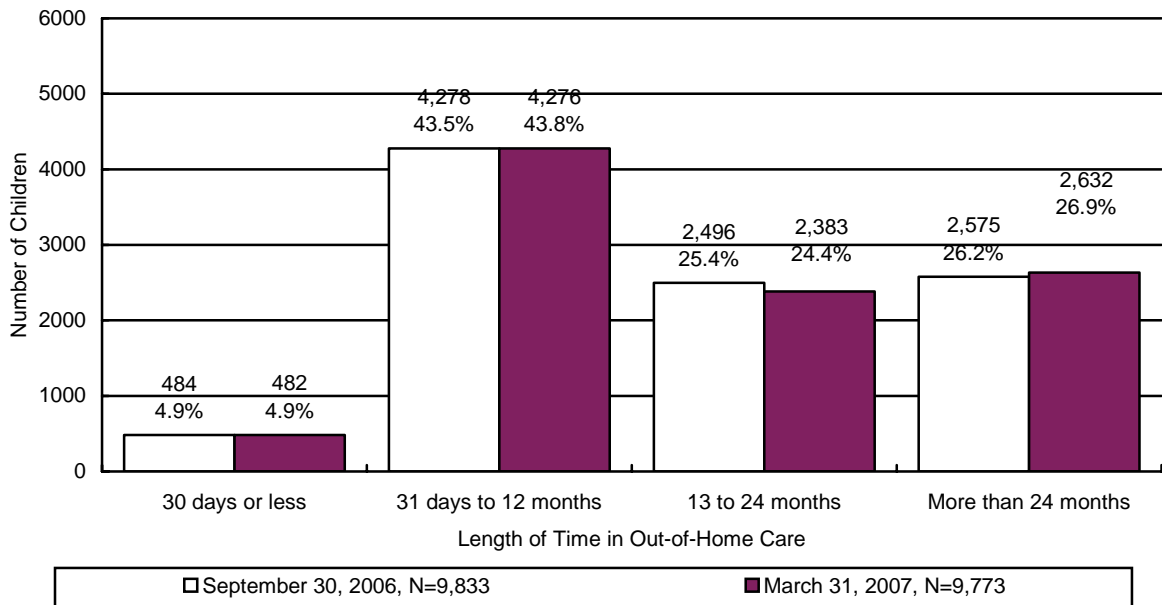


CHART 28
THE NUMBER OF CHILDREN IN OUT-OF-HOME CARE BY LENGTH OF TIME IN CARE



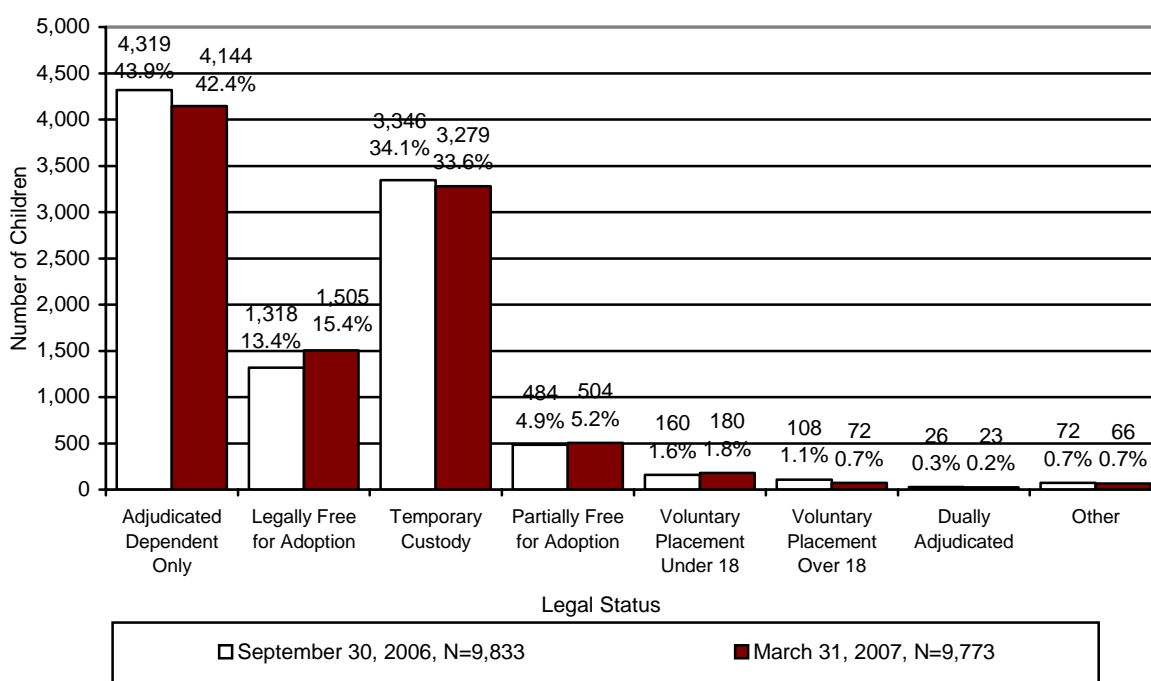
⁷ The chart displays children who spent more than 21 days in shelter during the period. This number differs from the other out of home charts as they display children in out-of-home care on the last day of the reporting period.

For the children in out-of-home care on March 31, 2007 the average number of placements was 3.16, the median number of placements was 2.0, and the range for the number of placements was 1 to 41 placements during their current removal episode.

TABLE 33

	Placements
Average	3.16
Median	2
Range Minimum	1
Range Maximum	41 ⁸

**CHART 29
CHILDREN IN OUT-OF-HOME CARE BY LEGAL STATUS**



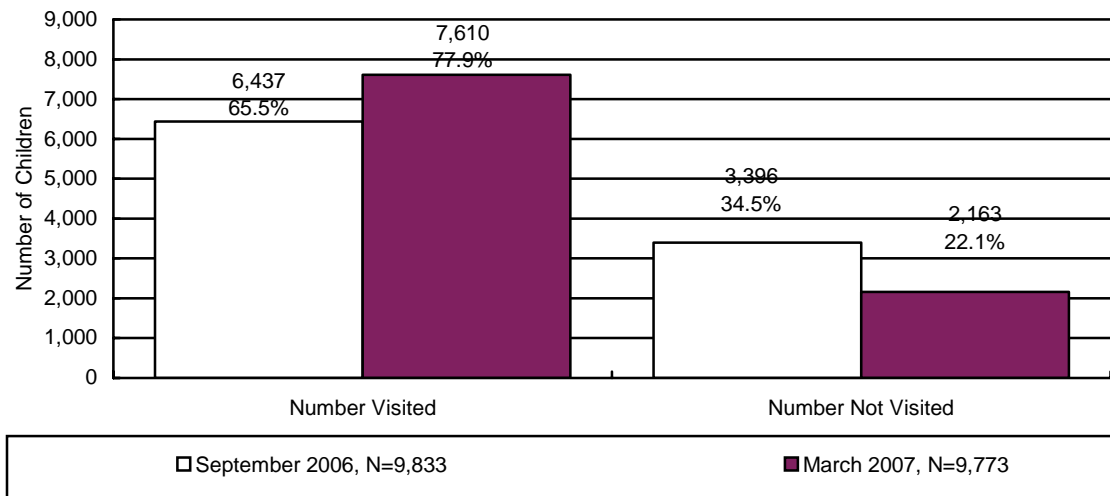
At the end of the reporting period there were 9,773 children in out-of-home care who required visitation. Of these children, visitation was accurately documented in the automated system for 7,610 children. As displayed in Chart 30, during this reporting period, the percent of children receiving required visits by their CPS Specialists increased by 12.4 percent to 77.9 percent.

The required child visitation is performed monthly by DES case managers, contracted case managers, and/or other professionals as approved by supervisor or as established by policy. The Department has verified that more children received the required visitation than is indicated in the chart below, which

⁸ Some children are so damaged by the severity of the abuse they have suffered that they become unable to form meaningful relationships or to respond to services. These children tend to go through multiple placements with numerous individuals and agencies. The child with 41 placements suffered from physical abuse by his parents who abused drugs and were involved in domestic violence. His placements include placements with numerous foster parents, residential living, detention, correctional facilities, and psychiatric hospitalizations

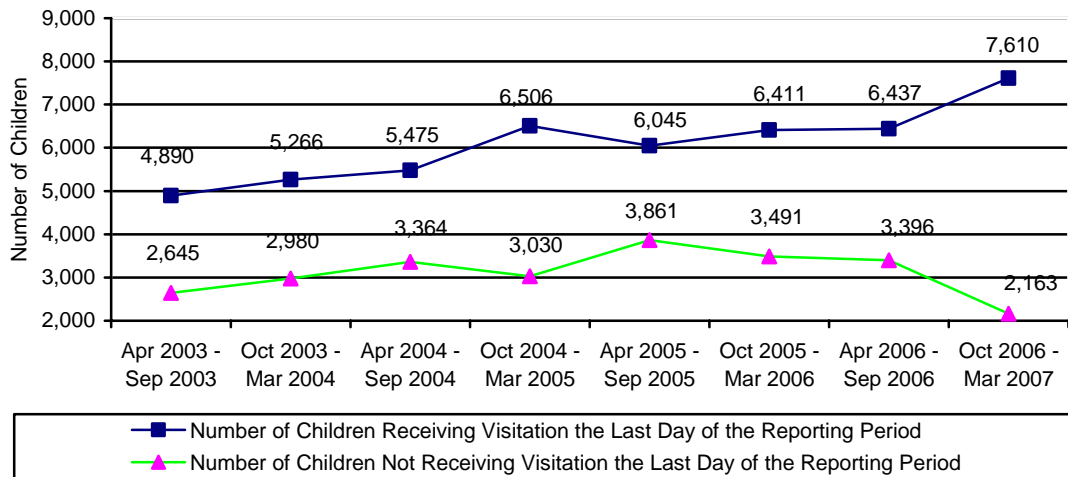
displays the number of children receiving the required visitation. This information is clearly documented in the automated case notes. However, the Department is unable to compile and tabulate data based solely upon case note text. We continue to issue instructions to all direct service staff regarding the system requirements for capturing all visitations. A child was deemed to have received the required visitation if the child received the visitation during the last month of the reporting period.

**CHART 30
THE NUMBER AND PERCENTAGE OF CHILDREN WHO RECEIVED THE REQUIRED VISITATION**



According to the Administration for Children, Youth, and Families (ACYF) policy, case managers shall have face-to-face contact with all parents at least once a month, including any alleged parents and parents residing out side of the child’s home where the case plan goal is family reunification or remain with family. During the reporting period, there were 2,215 parents who had a child with the case plan goal of return home. Of those parents requiring the visitation, 1,398 or 63.1 percent received the required visitation. The 63.1 percent visitation rate does not reflect attempted visitation where contact did not take place.

**CHART 31
NUMBER OF CHILDREN RECEIVING AND NOT RECEIVING VISITATION BY REPORTING PERIOD**



FOSTER HOMES

As of March 31, 2007, there were 3,177 licensed foster homes with 6,498 spaces available for Administration for Children, Youth, and Families (ACYF) placements. Licensed foster homes include family foster homes, professional family foster homes, respite foster homes, and receiving foster homes.

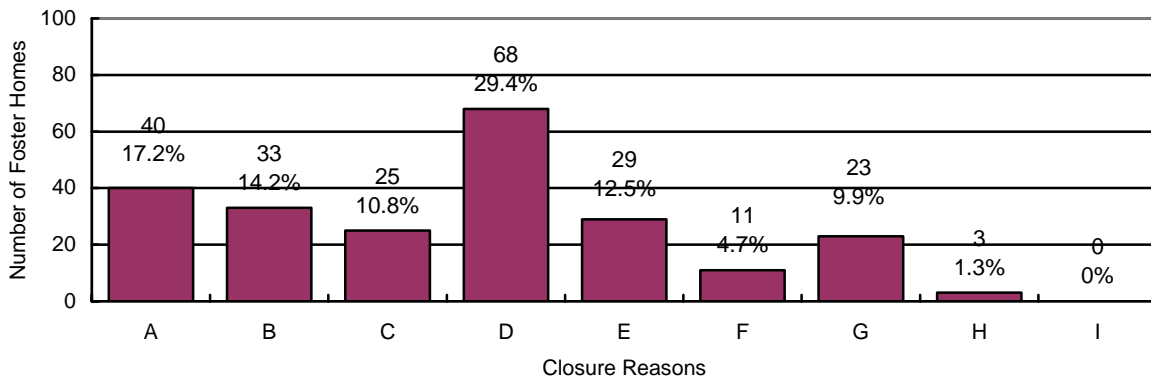
Foster home licenses specify the age range, gender and maximum number of children that can be placed in a home. Foster parents, in consultation with the licensing worker, decide the type of physical, behavioral, and psychological needs of children they can effectively parent based upon their own skill level, experiences, and desires.

As of March 31, 2007, there were 2,225 unused spaces within these foster homes. Approximately 1,221 of the 2,225 spaces were unavailable or set aside for respite care services. Of the unused spaces, a match between the available spaces and children’s needs was not possible.

During the reporting period, 432 new homes were licensed to provide foster care and 232 homes left the system. This compares to 426 new homes being licensed and 166 homes leaving the system for the period covering April 2006 through April 2006.

The chart below gives the reasons for foster home closures for the period of October 1, 2006 through March 31, 2007.

**CHART 32
REASON FOR FOSTER HOME CLOSURE FOR THE PERIOD OF OCTOBER 1, 2006
THROUGH MARCH 31, 2007**

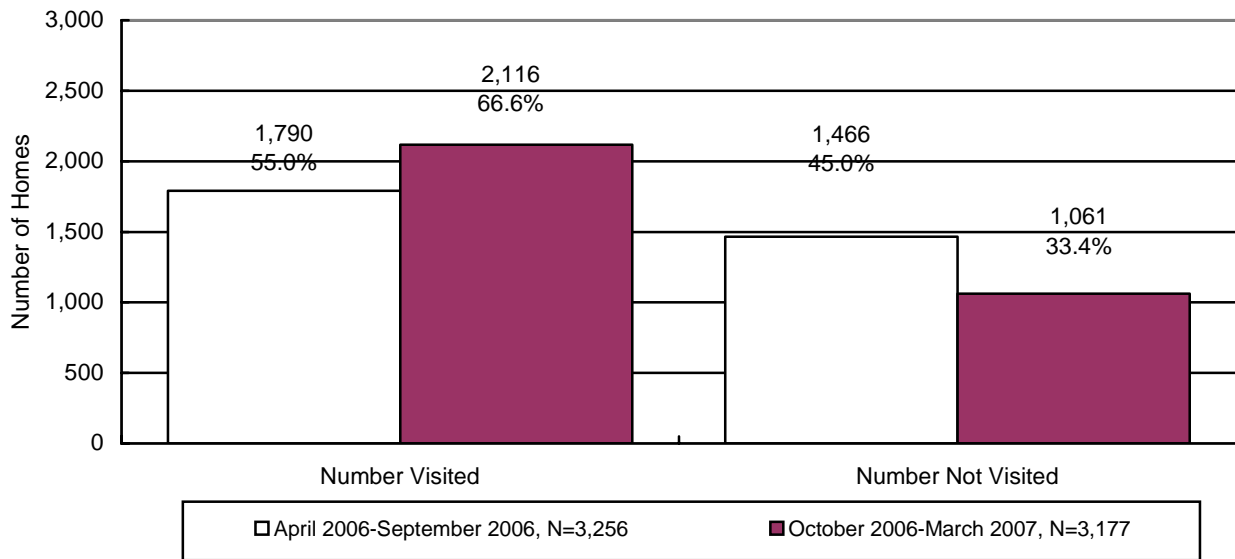


N=232

- A = Personal or Family Issues or Problems**
- B = Other or Foster Parent Did Not State Reason**
- C = Non-Compliance with Licensing Requirements**
- D = Adoption of Foster Child**
- E = Family Relocation**
- F = Child Left Care**
- G = Philosophical Disagreement**
- H = Behavior of Child**
- I = Transfer to Division of Developmental Disabilities**

During the reporting period, there were 3,177 foster homes that required visitation. Of the 3,177 foster homes requiring visitation, 2,116 foster homes received their required visitation. This compares to 1,790 or 55.0% of the foster homes that received the required visitation for the period April 2006 through September 2006. The Department believes that more foster homes received the required visitation than is indicated in the chart below. The under reporting of foster home visitation is attributable to the lack of automation being used in reporting the foster home visitation process. The Department recognizes this as a problem and is working to correct this issue.

**CHART 33
THE NUMBER AND PERCENTAGE OF FOSTER HOMES WHO RECEIVED THE
REQUIRED VISITATION***



*Required visitations to foster homes, for license monitoring purposes, are performed by licensing case managers.

CHILDREN EXITING OUT-OF-HOME CARE

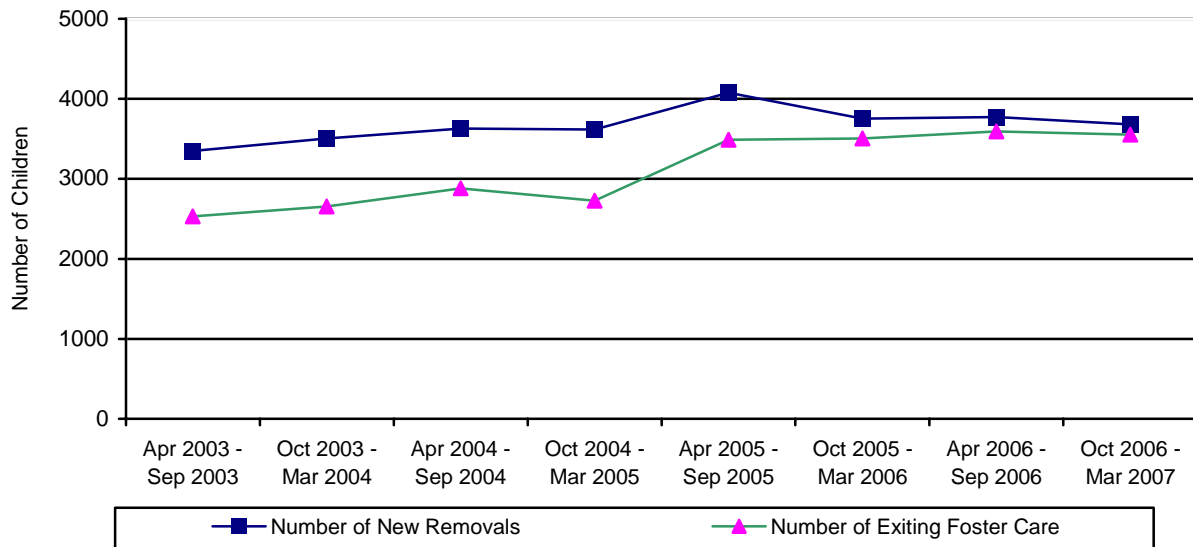
During the reporting period, 3,553 children left the custody of the Department. This compares to 3,595 children exiting care during the prior reporting period. The comparison between the two reporting periods shows that 1.2% fewer children left care this reporting period for a decrease of 42 children exiting care.

**TABLE 34
CHILDREN EXITING OUT-OF-HOME CARE BY PERIOD**

REPORTING PERIOD	NUMBER OF CHILDREN DISCHARGED	% CHANGE OVER PRIOR PERIOD
APRIL 2003 – SEPTEMBER 2003	2,528	+11.1%
OCTOBER 2003 – MARCH 2004	2,655	+5.0%
APRIL 2004 – SEPTEMBER 2004	2,883	+8.6%
OCTOBER 2004 – MARCH 2005	2,726	-5.4%
APRIL 2005 – SEPTEMBER 2005	3,488	+28.0%
OCTOBER 2005 – MARCH 2006	3,506	+0.5%
APRIL 2006 – SEPTEMBER 2006	3,595	+2.5%
OCTOBER 2006 – MARCH 2007	3,553	-1.2%

The following nine tables depict the children who exited out-of-home care by the reason for leaving care. The tables display the following information: reasons the child left custody, their age, their ethnicity, the number of placements each child had, and the length of time in out-of-home care.

**CHART 34
CHILDREN ENTERING AND EXITING OUT-OF-HOME CARE BY REPORTING PERIOD**



**TABLE 35
TOTAL NUMBER OF CHILDREN LEAVING DES CUSTODY FOR THE END OF THE
REPORTING PERIOD ENDING ON MARCH 31, 2007**

By Age	Number	Percentage
Under 1	279	7.9%
Ages 1 - 5	1,246	35.0%
Ages 6 – 8	487	13.7%
Ages 9 - 12	479	13.5%
Ages 13 - 17	777	21.9%
18 and Over	285	8.0%
Total	3,553	100.0%
Ethnicity	Number	Percentage
Caucasian	1,482	41.7%
Hispanic	1,237	34.8%
African American	412	11.6%
American Indian	265	7.5%
Asian	38	1.1%
Other	119	3.3%
Total	3,553	100.0%
By Number of Placements	Number	Percentage
One	1,861	52.3%
Two	752	21.2%
Three	372	10.5%
Four	194	5.5%
Five	111	3.1%
More than Five	263	7.4%
Total	3,553	100.0%
By Length of Time in Care	Number	Percentage
Less than 30 Days	936	26.3%
31 Days to 12 Months	1,062	29.9%
13 to 24 Months	763	21.5%
More than 24 Months	792	22.3%
Total	3,553	100%

	Average	Median
By Age	8.57	7.39
By Number of Placements	2.40	1.00
By Months of Time in Care	15.63	10.99

**TABLE 36
NUMBER AND PERCENTAGE OF CHILDREN LEAVING DES CUSTODY
FOR REASON OF “REUNIFICATION WITH PARENTS OR PRIMARY CARETAKER” FOR
THE REPORTING PERIOD ENDING MARCH 31, 2007**

By Age	Number	Percentage
Under 1	211	11.8%
Ages 1 - 5	601	33.7%
Ages 6 – 8	260	14.6%
Ages 9 - 12	254	14.2%
Ages 13 - 17	454	25.5%
18 and Over	3	0.2%
Total	1,783	100.0%
Ethnicity	Number	Percentage
Caucasian	752	42.3%
Hispanic	582	32.6%
African American	220	12.3%
American Indian	125	7.0%
Asian	23	1.3%
Other	81	4.5%
Total	1,783	100.0%
By Number of Placements	Number	Percentage
One	1,117	62.7%
Two	384	21.5%
Three	139	7.8%
Four	66	3.7%
Five	29	1.6%
More than Five	48	2.7%
Total	1,783	100.0%
By Length of Time in Care	Number	Percentage
Less than 30 Days	662	37.1%
31 Days to 12 Months	738	41.4%
13 to 24 Months	280	15.7%
More than 24 Months	103	5.8%
Total	1,783	100.0%

	Average	Median
By Age	7.80	6.84
By Number of Placements	1.73	1.00
By Months of Time in Care	7.59	3.16

TABLE 37
NUMBER AND PERCENTAGE OF CHILDREN LEAVING DES CUSTODY
FOR REASON OF “LIVING WITH OTHER RELATIVES” FOR THE REPORTING PERIOD
ENDING MARCH 31, 2007

By Age	Number	Percentage
Under 1	23	18.5%
Ages 1 - 5	47	38.0%
Ages 6 – 8	17	13.7%
Ages 9 - 12	17	13.7%
Ages 13 - 17	20	16.1%
18 and Over	0	0.0%
Total	124	100.0%
Ethnicity	Number	Percentage
Caucasian	42	33.9%
Hispanic	42	33.9%
African American	15	12.1%
American Indian	16	12.9%
Asian	3	2.4%
Other	6	4.8%
Total	124	100.0%
By Number of Placements	Number	Percentage
One	114	92.0%
Two	6	4.8%
Three	4	3.2%
Four	0	0.0%
Five	0	0.0%
More than Five	0	0.0%
Total	124	100.0%
By Length of Time in Care	Number	Percentage
Less than 30 Days	112	90.3%
31 Days to 12 Months	9	7.3%
13 to 24 Months	3	2.4%
More than 24 Months	0	0.0%
Total	124	100.0%

	Average	Median
By Age	6.35	5.16
By Number of Placements	1.06	1.00
By Months of Time in Care	.87	.13

**TABLE 38
NUMBER AND PERCENTAGE OF CHILDREN LEAVING DES
CUSTODY FOR REASON OF "ADOPTION" FOR THE REPORTING PERIOD
ENDING MARCH 31, 2007**

By Age	Number	Percentage
Under 1	0	0.0%
Ages 1 - 5	409	58.9%
Ages 6 – 8	140	20.1%
Ages 9 - 12	89	12.8%
Ages 13 - 17	55	7.9%
18 and Over	2	0.3%
Total	695	100.0%
Ethnicity	Number	Percentage
Caucasian	304	43.8%
Hispanic	272	39.1%
African American	68	9.8%
American Indian	35	5.0%
Asian	5	0.7%
Other	11	1.6%
Total	695	100.0%
By Number of Placements	Number	Percentage
One	225	32.4%
Two	195	28.0%
Three	127	18.3%
Four	58	8.3%
Five	36	5.2%
More than Five	54	7.8%
Total	695	100.0%
By Length of Time in Care	Number	Percentage
Less than 30 Days	0	0.0%
31 Days to 12 Months	24	3.5%
13 to 24 Months	237	34.1%
More than 24 Months	434	62.4%
Total	695	100.0%

	Average	Median
By Age	5.97	4.88
By Number of Placements	2.65	2.00
By Months of Time in Care	29.63	27.40

**TABLE 39
NUMBER AND PERCENTAGE OF CHILDREN LEAVING DES CUSTODY
FOR REASON OF "GUARDIANSHIP" FOR THE REPORTING PERIOD
ENDING MARCH 31, 2007**

By Age	Number	Percentage
Under 1	29	6.1%
Ages 1 - 5	139	29.3%
Ages 6 – 8	61	12.8%
Ages 9 - 12	102	21.5%
Ages 13 - 17	144	30.3%
18 and Over	0	0.0%
Total	475	100.0%
Ethnicity	Number	Percentage
Caucasian	179	37.7%
Hispanic	186	39.2%
African American	59	12.4%
American Indian	37	7.8%
Asian	4	0.8%
Other	10	2.1%
Total	475	100.0%
By Number of Placements	Number	Percentage
One	260	54.8%
Two	107	22.5%
Three	45	9.5%
Four	29	6.1%
Five	20	4.2%
More than Five	14	2.9%
Total	475	100.0%
By Length of Time in Care	Number	Percentage
Less than 30 Days	76	16.0%
31 Days to 12 Months	178	37.4%
13 to 24 Months	157	33.1%
More than 24 Months	64	13.5%
Total	475	100.0%

	Average	Median
By Age	8.99	9.23
By Number of Placements	1.95	1.00
By Months of Time in Care	13.55	12.73

TABLE 40
NUMBER AND PERCENTAGE OF CHILDREN LEAVING DES CUSTODY
FOR REASONS OF “REACHING AGE OF MAJORITY” FOR THE REPORTING PERIOD
ENDING MARCH 31, 2007

By Age	Number	Percentage
Under 1	0	0.0%
Ages 1 - 5	0	0.0%
Ages 6 – 8	0	0.0%
Ages 9 - 12	0	0.0%
Ages 13 - 17	2	0.7%
18 and Over	272	99.3%
Total	274	100.0%
Ethnicity	Number	Percentage
Caucasian	136	49.7%
Hispanic	80	29.2%
African American	28	10.2%
American Indian	25	9.1%
Asian	2	0.7%
Other	3	1.1%
Total	274	100.0%
By Number of Placements	Number	Percentage
One	26	9.5%
Two	29	10.6%
Three	33	12.0%
Four	27	9.9%
Five	23	8.4%
More than Five	136	49.6%
Total	274	100.0%
By Length of Time in Care	Number	Percentage
Less than 30 Days	4	1.5%
31 Days to 12 Months	42	15.3%
13 to 24 Months	58	21.2%
More than 24 Months	170	62.0%
Total	274	100.0%

	Average	Median
By Age	18.67	18.00
By Number of Placements	7.77	5.00
By Months of Time in Care	47.07	31.78

TABLE 41
NUMBER AND PERCENTAGE OF CHILDREN LEAVING DES CUSTODY
FOR REASON OF “TRANSFER TO ANOTHER AGENCY” FOR THE REPORTING PERIOD
ENDING MARCH 31, 2007

By Age	Number	Percentage
Under 1	15	12.0%
Ages 1 – 5	50	40.0%
Ages 6 – 8	9	7.2%
Ages 9 – 12	17	13.6%
Ages 13 – 17	29	23.2%
18 and Over	5	4.0%
Total	125	100.0%
Ethnicity	Number	Percentage
Caucasian	33	26.4%
Hispanic	45	36.0%
African American	14	11.2%
American Indian	24	19.2%
Asian	1	0.8%
Other	8	6.4%
Total	125	100.0%
By Number of Placements	Number	Percentage
One	64	51.2%
Two	24	19.2%
Three	19	15.2%
Four	10	8.0%
Five	2	1.6%
More than Five	6	4.8%
Total	125	100.0%
By Length of Time in Care	Number	Percentage
Less than 30 Days	27	21.6%
31 Days to 12 Months	60	48.0%
13 to 24 Months	24	19.2%
More than 24 Months	14	11.2%
Total	125	100.0%

	Average	Median
By Age	7.66	5.75
By Number of Placements	2.25	1.00
By Months of Time in Care	11.12	7.47

TABLE 42
NUMBER AND PERCENTAGE OF CHILDREN LEAVING DES CUSTODY
FOR REASON OF “RUNAWAY” FOR THE REPORTING PERIOD
ENDING MARCH 31, 2007

By Age	Number	Percentage
Under 1	0	0.0%
Ages 1 – 5	0	0.0%
Ages 6 – 8	0	0.0%
Ages 9 – 12	0	0.0%
Ages 13 – 17	73	96.1%
18 and Over	3	3.9%
Total	76	100.0%
Ethnicity	Number	Percentage
Caucasian	36	47.4%
Hispanic	30	39.5%
African American	8	10.5%
American Indian	2	2.6%
Asian	0	0.0%
Other	0	0.0%
Total	76	100.0%
By Number of Placements	Number	Percentage
One	55	72.3%
Two	7	9.2%
Three	5	6.6%
Four	4	5.3%
Five	0	0.0%
More than Five	5	6.6%
Total	76	100.0%
By Length of Time in Care	Number	Percentage
Less than 30 Days	55	72.3%
31 Days to 12 Months	10	13.2%
13 to 24 Months	4	5.3%
More than 24 Months	7	9.2%
Total	76	100.0%

	Average	Median
By Age	16.57	16.68
By Number of Placements	1.76	1.00
By Months of Time in Care	7.44	.13

TABLE 43
NUMBER AND PERCENTAGE OF CHILDREN LEAVING DES CUSTODY
FOR REASON OF “DEATH OF CHILD” FOR THE REPORTING PERIOD ENDING
MARCH 31, 2007

By Age	Number	Percentage
Under 1	1	100.0%
Ages 1 - 5	0	0.0%
Ages 6 – 8	0	0.0%
Ages 9 - 12	0	0.0%
Ages 13 - 17	0	0.0%
18 and Over	0	0.0%
Total	1	100.0%
Ethnicity	Number	Percentage
Caucasian	0	0.0%
Hispanic	0	0.0%
African American	0	0.0%
American Indian	1	100.0%
Asian	0	0.0%
Other	0	0.0%
Total	1	100.0%
By Number of Placements	Number	Percentage
One	0	0.0%
Two	0	0.0%
Three	0	0.0%
Four	1	100.0%
Five	0	0.0%
More than Five	0	0.0%
Total	1	100.0%
By Length of Time in Care	Number	Percentage
Less than 30 Days	0	0.0%
31 Days to 12 Months	1	100.0%
13 to 24 Months	0	0.0%
More than 24 Months	0	0.0%
Total	1	100.0%

	Average	Median
By Age	.22	.22
By Number of Placements	4.00	4.00
By Months of Time in Care	2.57	2.57

TABLE 44
CHILDREN EXITING CARE FOR REASON OF DEATH BY CAUSE OF DEATH,
PLACEMENT TYPE AT TIME OF DEATH, AND COUNTY

COUNTY	CAUSE OF DEATH	TYPE OF PLACEMENT AT TIME OF DEATH
Maricopa	Natural Causes	Family Foster Home (Respite)

TABLE 45
NUMBER OF CHILDREN IN AN OPEN CASE WHO DIED AS A RESULT OF ALLEGED
ABUSE AS CATEGORIZED BY THE CUSTODIAL RELATIONSHIP AND COUNTY

COUNTY	BIOLOGICAL PARENT(S)	OTHER FAMILY MEMBER	ADOPTIVE PARENT(S)	FOSTER CARE PARENT(S)	OTHER OUT-OF-HOME CARE PROVIDER	TOTAL	% OF TOTAL
APACHE	0	0	0	0	0	0	0
COCHISE	0	0	0	0	0	0	0
COCONINO	0	0	0	0	0	0	0
GILA	0	0	0	0	0	0	0
GRAHAM	1	0	0	0	0	1	33.3%
GREENLEE	0	0	0	0	0	0	0
LA PAZ	0	0	0	0	0	0	0
MARICOPA	0	1	0	0	0	1	33.3%
MOHAVE	0	0	0	0	0	0	0
NAVAJO	0	0	0	0	0	0	0
PIMA	1	0	0	0	0	1	33.3%
PINAL	0	0	0	0	0	0	0
SANTA CRUZ	0	0	0	0	0	0	0
YAVAPAI	0	0	0	0	0	0	0
YUMA	0	0	0	0	0	0	0
STATEWIDE	2	1	0	0	0	3	100.0%
% OF TOTAL	66.7%	33.3%	0%	0%	0%	100.0%	

There were no children in an open case who died as a result of abuse from a household adult not accounted for in the prior table.

The Department faces many challenges in pursuing the safety and permanency of abused and neglected children. Some of the challenges the Department has faced in meeting these goals are:

- The recruitment and retention of skilled case managers. The Department continues to struggle with an inexperienced work force that is unable to deal with the complex issues present in the child welfare system.
- Lack of economic stability. The Department tends to deal with families near the bottom of the socio economic scale. These families have great difficulty in providing the basic necessities for their children. We continue to search for ways to integrate services to aid us in addressing this issue.
- The use of alcohol and drugs. The Department continues to encounter challenges in providing safety and permanency for children whose parents are abusing alcohol and drugs.

- The state's continued population growth. The Department faces a challenge in providing services to a rapidly expanding population. This population growth continues to strain the Department's resources to provide a level of service that is deserved by our clients.

CHILDREN WITH ADOPTIVE CASE PLAN GOALS

Of the 9,773 children in out-of-home care on March 31, 2007, 2,439 or 25.4 percent had a case plan goal of adoption. The majority of those children, 48.8 percent are in the 1-5 year old age range, followed by 20.3 percent in the 6-8 year old age range, and 18.7 percent in the 9-12 year old age range. The remaining children, 300 or 12.2 percent, fall within the under one or 13 and over age range. The majority of these children are Caucasian (1,072 or 44.0%), Hispanic (866 or 35.5%), or African American (278 or 11.4%). The remaining 223 children or 9.1 percent are American Indian, Asian or other. Sixty-two percent or 1,376 of the children free for adoption are currently placed in their adoptive homes.

Arizona Revised Statute §8-526 requires that we report the number of children with a petition for termination of parental rights granted and not granted during the reporting period. The data from the Attorney General's Office are unavailable for the current reporting period. We have been assured the data will be available for the next reporting period.

The average length of time that a child with a case plan goal of "adoption" has spent in out-of-home care is 2 years, 3 months. There were a total of 2,439 children with case plan goals of adoption during this reporting period. Of this total, 2,214 were placed and 225 were not placed. The population of children with case plan goals of adoption averaged 3.18 placements and had a median placement count of 2. Their placement count ranged from 1 to 23.

TABLE 46

	Placements
Average	3.18
Median	2
Range Minimum	1
Range Maximum	23

CHART 35
THE NUMBER OF CHILDREN WITH A CASE PLAN GOAL OF ADOPTION BY AGE

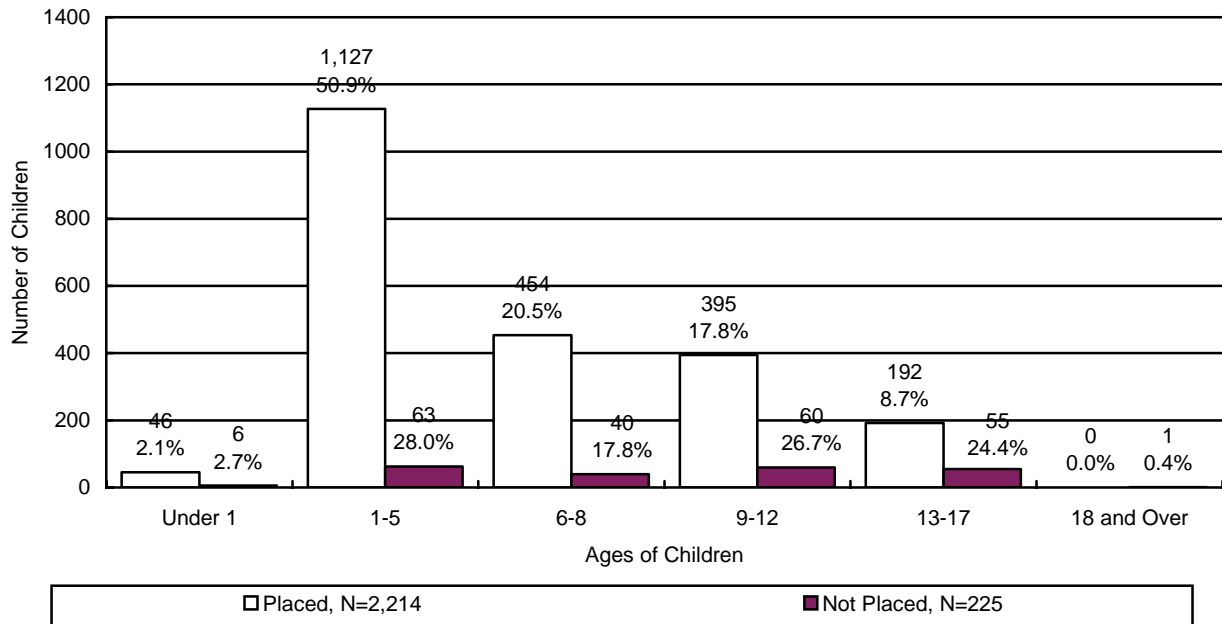


CHART 36
THE NUMBER OF CHILDREN WITH A CASE PLAN GOAL OF ADOPTION BY ETHNICITY

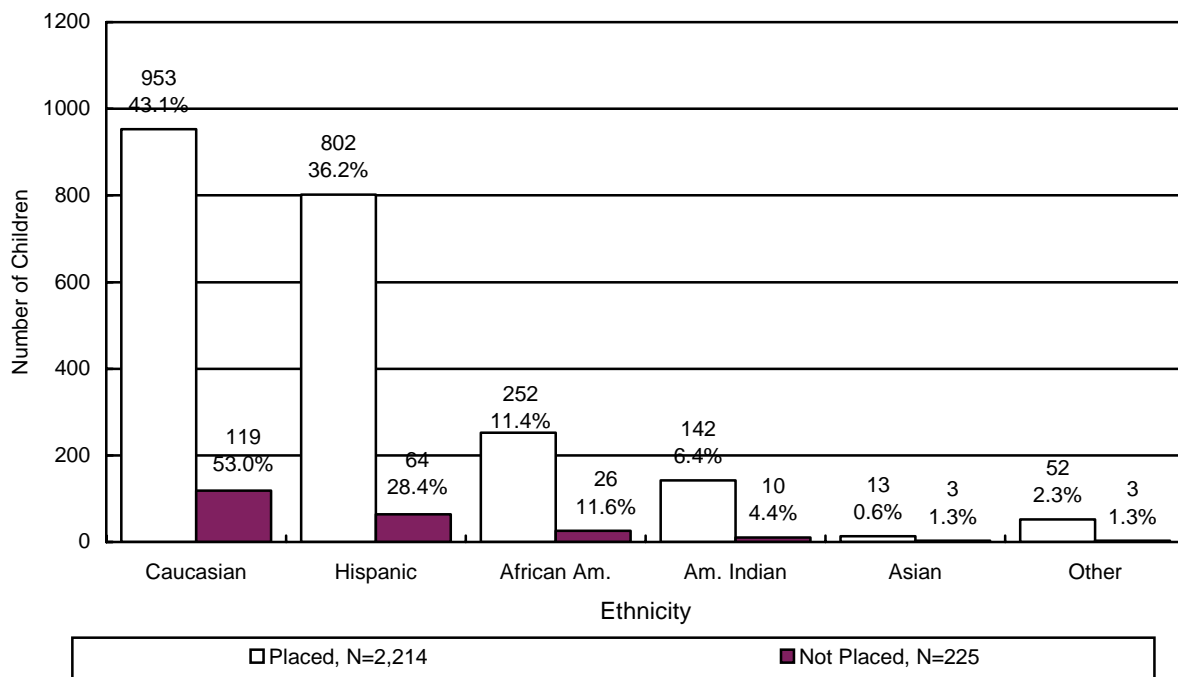
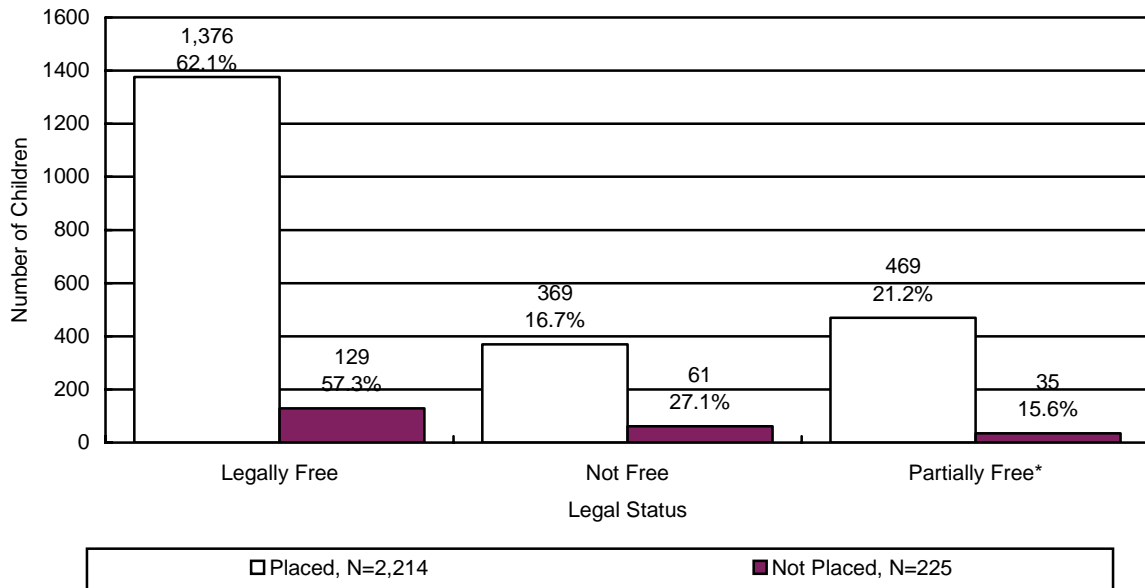
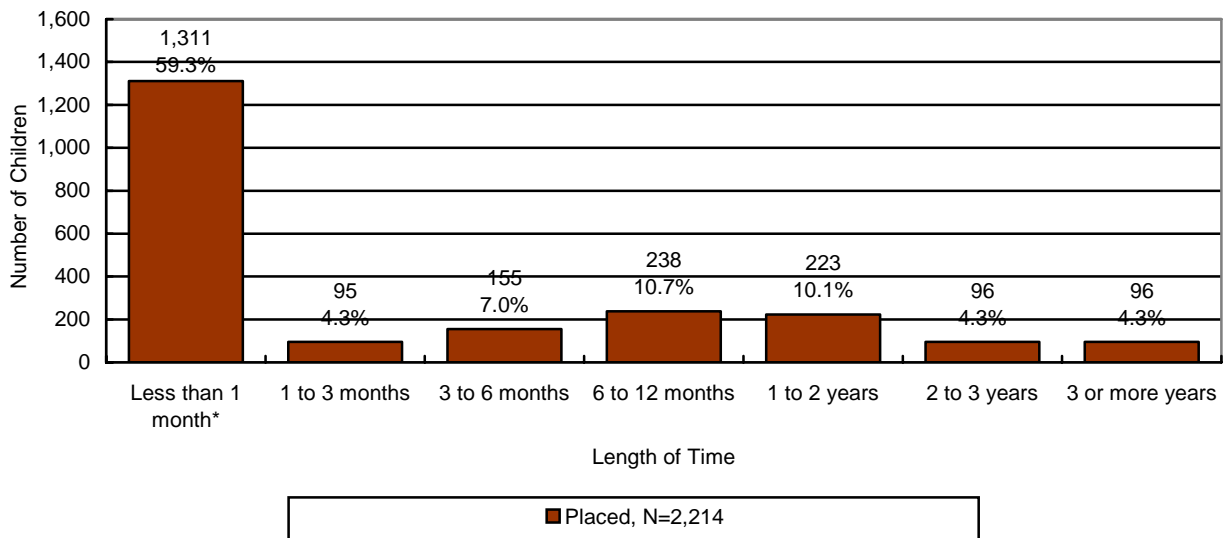


CHART 37
THE NUMBER OF CHILDREN WITH A CASE PLAN GOAL OF ADOPTION BY LEGAL STATUS



*Partially free refers to a situation where only one of the parent’s rights has been severed.

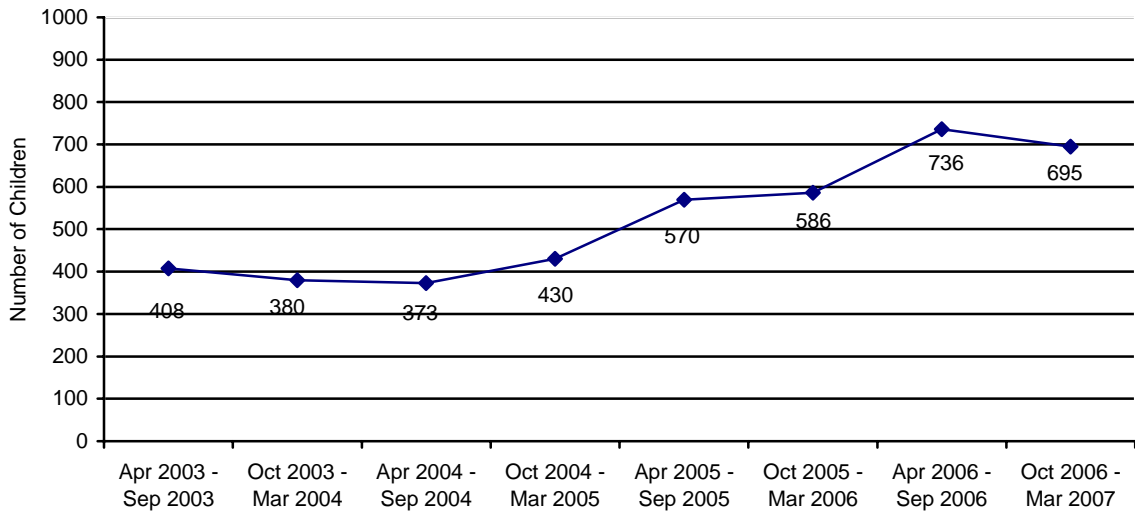
CHART 38
THE NUMBER OF BY LENGTH OF TIME FROM CHANGE OF CASE PLAN GOAL OF ADOPTION TO ADOTPIVE PLACEMENT



*About 70% of children are adopted by relatives or their foster parents and are already in their prospective adoptive placement at the time the case plan goal changes to adoption.

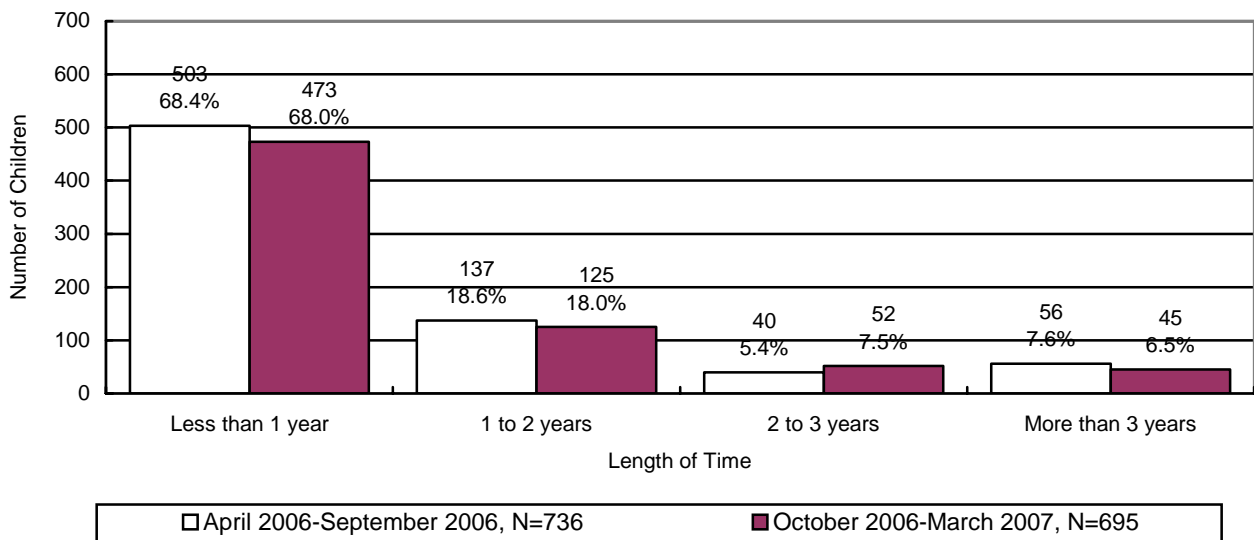
ADOPTIVE SERVICES

**CHART 39
THE NUMBER OF CHILDREN WITH A FINALIZED ADOPTION**



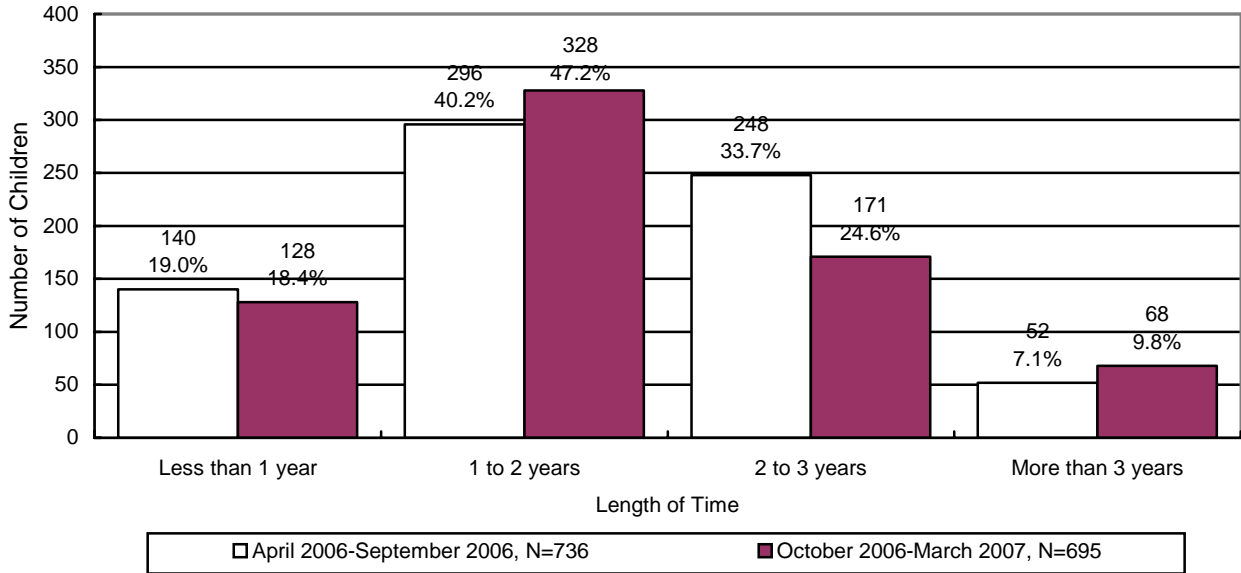
There were 695 children with a finalized adoption during the reporting period. Chart 40 below, displays the number of children with a finalized adoption during the reporting period by the average length of time in out-of-home placement before adoptive placement.

**CHART 40
THE NUMBER AND PERCENTAGE OF CHILDREN WITH A FINALIZED ADOPTION BY AVERAGE LENGTH OF TIME IN OUT-OF-HOME PLACEMENT BEFORE ADOPTIVE PLACEMENT**



The chart below displays the number of children with a finalized adoption by average length of time in adoptive placement before the final order of adoption.

CHART 41
THE NUMBER AND PERCENTAGE OF CHILDREN WITH A FINALIZED ADOPTION BY AVERAGE LENGTH OF TIME IN ADOPTIVE PLACEMENT BEFORE THE FINAL ORDER OF ADOPTION



*About 70% of children are adopted by relatives or their foster parents and are already in their prospective adoptive placement at the time the case plan goal changes to adoption.