

CHILD WELFARE REPORTING REQUIREMENTS

SEMI-ANNUAL REPORT

FOR THE PERIOD OF

OCTOBER 1, 2007 THROUGH MARCH 31, 2008

ARIZONA REVISED STATUTES

[LAWS 2006, CHAPTER 203]

ARIZONA DEPARTMENT OF ECONOMIC SECURITY

DIVISION OF CHILDREN, YOUTH AND FAMILIES

ADMINISTRATION FOR CHILDREN, YOUTH AND FAMILIES

CHILD WELFARE REPORTING REQUIREMENTS

Arizona Revised Statute §8-526, as amended by Laws 2006, Chapter 203 requires the Arizona Department of Economic Security (DES) to compile information and produce a semi-annual report for the periods ending on March 31 and September 30 of each year regarding Child Welfare Services, including Child Protective Services (CPS). This report, submitted in satisfaction of that mandate, is for the semi-annual reporting period beginning on October 1, 2007 and ending on March 31, 2008.

TABLE OF CONTENTS

(Reporting period: October 1, 2007 through March 31, 2008)

| | <u>Page</u> |
|---|-------------|
| EXECUTIVE SUMMARY | 4 |
| SEMI-ANNUAL COMPARISONS | 7 |
| REPORTS OF CHILD ABUSE AND NEGLECT | |
| Reports by reporting period and type of child maltreatment – statewide data | 8 |
| Sample communications to hotline, not meeting definition of report | 10 |
| Reports received by risk level- statewide data | 11 |
| Number of reports received by risk level – county specific data | 11 |
| Number of reports received by maltreatment – statewide data | 12 |
| Number of reports received by maltreatment – county specific data | 13 |
| ASSIGNMENT OF INVESTIGATIONS | |
| Reports assigned for investigation by risk level – statewide data | 14 |
| Reports assigned for investigation by risk level – county specific data | 14 |
| Reports assigned for investigation by type of maltreatment – statewide data | 15 |
| Reports assigned for investigation by type of maltreatment – county specific data | 16 |
| INVESTIGATIONS OF CHILD ABUSE AND NEGLECT | |
| Reports not responded to by risk level- county specific data | 17 |
| Investigations by risk level – investigation still open – statewide data | 18 |
| Investigations by risk level – investigation still open – county specific data | 18 |
| Investigations by type of child maltreatment– investigation still open – statewide data | 19 |
| Investigations by type of child maltreatment– investigation still open – county specific data | 20 |
| Reports where removal occurred – county specific data | 21 |
| COMPLETED INVESTIGATIONS | |
| Substantiation rate by reporting period | 23 |
| Investigations by risk level - proposed substantiated reports – statewide data | 24 |

TABLE OF CONTENTS (continued)
(Reporting period: October 1, 2007 through March 31, 2008)

| | <u>Page</u> |
|---|-------------|
| Investigations by risk level – proposed substantiated reports – county specific data | 24 |
| Investigations by type of child maltreatment – proposed substantiated reports – statewide data | 25 |
| Investigations by type of child maltreatment – proposed substantiated reports – county specific data | 26 |
| Investigations by risk level - substantiated reports – statewide data | 27 |
| Investigations by risk level – substantiated reports county specific data | 27 |
| Investigations by type of child maltreatment - substantiated reports – statewide data | 28 |
| Investigations by type of child maltreatment – substantiated reports – county specific data | 29 |
| Investigations by risk level – unsubstantiated reports – statewide data | 30 |
| Investigations by risk level – unsubstantiated reports – county specific data | 30 |
| Investigations by type of child maltreatment - unsubstantiated reports – statewide data | 31 |
| Investigations by type of child maltreatment – unsubstantiated reports – county specific data | 32 |
| SAFE HAVEN INFANTS | |
| Number of Safe Haven infants delivered during reporting period | 33 |
| CHILDREN ENTERING OUT-OF-HOME CARE | |
| New entries by county – children under 18 years voluntary placement | 34 |
| New entries by county | 36 |
| New entries – statewide data | 37 |
| CHILDREN IN OUT-OF-HOME CARE | |
| Children in out-of-home care by reporting period | 38 |
| Children in group homes ages 0-6 | 39 |
| Children in shelter ages 0-3 | 39 |
| Average length of stay for children ages 0-3 exiting out-of-home care who were in a shelter placement | 40 |
| All children in care by age and ethnicity | 40-41 |
| All children in care by case plan goal and placement type | 41-42 |
| All children in care by placement type and age | 43 |
| Children in shelter or receiving homes for more than 21 days | 44 |
| Children in out-of-home care by length of time in care | 45 |
| Children in out-of-home care by legal status | 46 |
| Children receiving required visitation | 47 |
| FOSTER HOME LICENSING, CLOSURES, AND VISITATIONS | |
| Foster homes licensed | 48 |
| Foster homes closed and reason for closure | 48 |
| Child bed spaces available | 48 |

TABLE OF CONTENTS (continued)
(Reporting period: October 1, 2007 through March 31, 2008)

| | <u>Page</u> |
|---|-------------|
| Number of foster homes receiving the required visitation | 49 |
| CHILDREN LEAVING OUT-OF-HOME CARE | |
| Semi-Annual comparisons of total number leaving care – For all reasons | 50 |
| Total number leaving care | 51 |
| Total number leaving care – For reason of reunification with parents | 52 |
| Total number leaving care – For reason of living with other relatives | 53 |
| Total number leaving care – For reason of adoption | 54 |
| Total number leaving care – For reason of guardianship | 55 |
| Total number leaving care – For reason of reaching age of majority | 56 |
| Total number leaving care – For reason of transfer to another agency | 57 |
| Total number leaving care – For reason of runaway | 58 |
| Total number leaving care – For reason of death of child | 59 |
| Total number leaving care - by cause of death | 60 |
| Total number for reason of death of child - with alleged abuse | 60 |
| CHILDREN WITH CASE PLAN GOALS OF ADOPTION | |
| Number of children with a petition for termination of parental rights | 61 |
| Number of children with case plan goals of adoption by age | 62 |
| Number of children with case plan goals of adoption by ethnicity | 63 |
| Number of children with case plan goals of adoption by legal status | 63 |
| Number of children– length of time from change of case plan goal of adoption to adoptive placement | 64 |
| ADOPTIVE SERVICES | |
| Number of children with a finalized adoption by average length of time in out-of-home placement before adoptive placement | 65 |
| Number of children with a finalized adoption by average length of time in adoptive placement before the final order of adoption | 65 |

Executive Summary

The Arizona Department of Economic Security's Division of Children, Youth and Families (Division) is pleased to publish this semi-annual report for October 2007 through March 2008 in compliance with A.R.S. § 8-526. This report is intended to provide its readers an opportunity to review the Division's progress in implementing systemic improvement strategies as they impact key performance indicators.

In September 2005, the Division released *Strengthening Families – A Blueprint for Realigning Arizona's Child Welfare System*. The *Blueprint* outlined ambitious goals and key strategies for (1) enhancing the ability of parents to create safe, stable and nurturing home environments; (2) strengthening families so children can remain safely in their homes; (3) finding more permanent homes more quickly for children; and (4) placing children in the least restrictive, most family-like setting possible.

The improved outcomes for children and families that have resulted from the implementation of those strategies have been highlighted in previous editions of this report and other Division publications. Additional successes are expected as the Division continues the statewide implementation of other continuous improvement strategies, such as embedding the Division's comprehensive Child Safety Assessment, Strengths and Risk Assessment, and Case Planning (CSA/SRA/CP) process into child welfare practice. This enhanced process assists Child Welfare Specialists (CWS) in more effectively assessing risk and engaging families in planning for and completing the services that are going to help them to create safe, stable living environments for their children. The hard-copy version of this process was implemented between February and June 2006. The Division launched a fully automated version of the process in November 2007.

The data contained in this *Semi-Annual Report*, when combined with other child welfare-related information in the Department, demonstrate the significant progress made in many of the Division's areas of focus and identify areas where continued focus is needed.

Child Abuse Hotline and Child Protective Services (CPS) Investigations

The statewide Child Abuse Hotline received 30,021 calls during this reporting period. Of those, 12,393 – or 41.3 percent – *did not meet* the statutory criteria for a CPS report. Calls that did not meet the criteria for a CPS report included: requests for information or referrals for services; questions about current cases; and allegations of abuse or neglect where the alleged perpetrator was not the child's parent, guardian or custodian (those calls are referred to law enforcement for response). Every call that does not meet the criteria for a CPS report is reviewed within 48 hours by quality assurance staff to ensure the accuracy of that decision.

The statewide Child Abuse Hotline received 17,628 calls during this reporting period that met the statutory criteria for a CPS report. Of those, 215 were referred to other jurisdictions, the military or tribal governments for investigation. This resulted in 17,413 CPS reports being assigned to child welfare specialists for investigation. Compared to the same reporting period last year, this represents an increase of 991 CPS reports assigned for investigation – or 6.0 percent. This increase in CPS reports requiring an investigation has mainly impacted Maricopa and Pima counties.

Of the 17,413 CPS reports assigned for investigation during this reporting period, 10,760 reports – or 61.8 percent – had investigation closures entered into the Children's Information Library and Data Source (CHILDS) statewide case management information system. Closing a case means that the initial investigation to the original allegations of abuse or neglect has been completed and the appropriate case plan is put in place, as needed.

Of the 14,540 CPS reports subject to substantiation during this reporting period, 739 – or 5.1 percent – were substantiated. An additional 207 CPS reports – or 1.4 percent – were proposed for substantiation by child welfare specialists and are currently awaiting the results of the appeals process. Over time, the number of substantiated and proposed substantiated CPS reports associated with this time period will increase as investigation findings are entered into CHILDS.

It is sometimes difficult to substantiate allegations of abuse or neglect because current state laws that define child maltreatment do not include many situations related to child neglect or sexual abuse. The Department attempted to remedy this situation by supporting the introduction of House Bill 2704 in the Forty-eighth Legislature, Second Session. Although the bill successfully passed the House Human Services and Rules committees, the bill was not heard when it was subsequently assigned to the Senate Judiciary and Rules committees.

Children in Out-of-Home Care

The Division continues to engage the community in efforts to keep children safe, strengthen families, and prevent the need for children to be removed from their homes through the statewide implementation of strategies such as the Annie E. Casey Foundation's Family to Family Initiative. Family to Family includes four basic principles: (1) a child's safety is paramount; (2) children belong in families; (3) families need strong communities; and (4) public child welfare systems need partnerships with the community and with other systems to achieve strong outcomes for children.

Although the number of children in out-of-home care increased from 9,701 in the prior reporting period to 9,721 in March 2008, the number of children in care as a percentage of the total children in the state actually decreased by 5 percent during that time frame. The Department's efforts to provide in-home services to strengthen families continue to show progress in safely reducing the number of children in out-of-home care, as a proportion of the total number of children in the state.

The Division continues its success in placing children in the most family-like setting possible. In March 2008, 7,462 children – or 76.8 percent of all children in out-of-home care – were placed with relatives or licensed foster parents. An additional 52 children were placed with their parents on a trial home visit and 373 youth were residing in independent living settings. Efforts to increase the number of licensed foster parents who are able to meet the needs of children requiring out-of-home placement resulted in 794 new homes being licensed during this reporting period.

The Division continues to make tremendous strides in reducing the number of young children in shelter and group home care. In March 2008, there were 24 young children ages 0 through 3 in shelter care. This represents a decrease of 86 children – or 78.2 percent – since June 2005. Placement of young children in shelter care continues to be influenced by the need to place some children after regular work hours, such as weekends, as well as the placement of children in a specialized shelter in Pima County for medically fragile children. The Division has also worked diligently to reduce the number of very young children in group homes. In March 2008, there were 9 young children ages 0 to 6 in group homes. This represents a decrease of 121 children – or 93.1 percent – since June 2005. There are times when placement of young children in group homes is in the best interests of the children; for example, when group placement would allow siblings to stay together or when group placement is considered the least restrictive placement for a child with behavioral issues.

The length of time that all children spend in shelter care continues to decrease. Since March 2005, the number of children placed in shelter or receiving home care for 21 days or more decreased by 501 children – or 44.5 percent – a significant improvement. Compared to the same reporting period last year, the number of children in these temporary care settings decreased by 79 children – or 11.2 percent.

The state requires monthly face to face visitation with children in foster care. The current report shows that 75.9 percent of the children in foster care received their visitation during the last month of this reporting period. This is a significant increase from 68.2 percent of children receiving visitation during the last month of the reporting period, ending March 2005. The Department recognizes a strong correlation between caseworker visits with children and positive outcomes for these children, such as achieving permanency and other indicators of child well-being, and continues to make efforts to improve our rate of visitation.

Permanency for Children

The Division continues to work toward achieving permanency for children placed in out-of-home care. The total number of children achieving permanency through family reunification, adoption or legal guardianship was 2,944 in this reporting period, compared to 2,953 in the same reporting period last year. Compared to the same reporting period last year, in this reporting period:

- 1,814 children exited the system to family reunification, an increase of 31 children – or 1.7 percent.
- 765 children exited to adoption, an increase of 70 children – or 10.1 percent.
- 365 children exited to guardianship, a decrease of 110 children – or 23.1 percent.

This data demonstrates that more children are being reunified with their parents and more children are achieving permanency through adoption, which is considered the most permanent plan for a child who can not safely return home. Arizona continues to be recognized for its high rate of adoptions through receipt of federal Adoption Incentive funding. Incentive funding was awarded in federal fiscal years 2005 and 2006. In 2006, Arizona achieved the highest amount among state receiving incentive funding, and Arizona was in the top three among states receiving incentives in 2005.

Challenges

The Division faces a number of challenges in its efforts to ensure safety and promote permanency for abused and neglected children. Some of the challenges the Division has faced in meeting these goals are:

- Recruiting staff with expertise in child welfare and the retention of trained and qualified staff.
- Increased expectations for staff to implement new practices and meet new federal requirements without adequate funding.
- Economic factors which create additional stress upon families and increases factors that place children at risk of maltreatment.

Despite these challenges, the Division continues to ensure child welfare staff has the tools they need to do their jobs effectively, and that both state and federal standards are being implemented. The Division continues to work in partnership with the federal government to meet the federal Child and Family Service Review (CFSR) standards to improve outcomes for the children and families we serve.

Semi-Annual Comparisons

| | Apr 2004 through Sep 2004 | Oct 2004 through Mar 2005 | Apr 2005 through Sep 2005 | Oct 2005 through Mar 2006 | Apr 2006 through Sep 2006 | Oct 2006 through Mar 2007 | Apr 2007 through Sep 2007 | Oct 2007 through Mar 2008 |
|---|---------------------------------|---------------------------------|---------------------------------|---------------------------------|---------------------------------|---------------------------------|---------------------------------|---------------------------------|
| Number of Reports Received | 19,165 | 18,839 | 18,797 | 17,756 | 16,781 | 16,612 | 18,078 | 17,628 |
| Number of Reports Substantiated ¹ | 2,157 | 1,734 | 1,677 | 1,326 | 1,376 | 1,369 | 1,413 | 739 |
| Substantiation Rate | 14% | 11% | 11% | 9% | 10% | 10% | 10% | 5% |
| Number of Reports Investigated & Closed | N/A | N/A | N/A | N/A | 16,256 | 15,017 | 12,722 | 10,760 |
| Number of Reports Responded To | N/A | N/A | N/A | N/A | 16,619 | 16,422 | 17,876 | 17,413 |
| Number of new removals | 3,630 | 3,617 | 4,078 | 3,753 | 3,773 | 3,683 | 3,924 | 3,742 |
| Number of new removals with Voluntary under 18 | 279 | 118 | 420 | 290 | 386 | 398 | 468 | 408 |
| Number of Children in Out-of-Home Care on the Last Day of Reporting Period | 8,839 | 9,536 | 9,906 | 9,902 | 9,833 | 9,773 | 9,701 | 9,721 |
| Number of Children in Shelter for More than 21 Days | 1,319 | 1,127 | 1,039 | 840 | 744 | 705 | 679 | 626 |
| Number and Percentage of Children Receiving Visitation In the Last Month of Reporting Period | 5,475 (61.9%) | 6,506 (68.2%) | 6,045 (61.0%) | 6,411 (64.7%) | 6,437 (65.5%) | 7,610 (77.9%) | 7,283 (75.1%) | 7,376 (75.9%) |
| Number and Percentage of Children not Receiving Visitation | 3,364 (38.1%) | 3,030 (31.8%) | 3,861 (39.0%) | 3,491 (35.3%) | 3,396 (34.5%) | 2,163 (22.1%) | 2,418 (24.9%) | 2,345 (24.1%) |
| Number and Percentage of Parents Receiving Visitation | 1,049 (50.4%) | 1,255 (56.0%) | 1,080 (47.9%) | 1,154 (52.1%) | 1,131 (51.8%) | 1,398 (63.1%) | 1,241 (63.5%) | 1,025 (62.3%) |
| Number of Licensed Foster Homes | 2,191 | 2,267 | 2,288 | 2,863 | 3,256 | 3,177 | 3,512 | 3,592 |
| Number of Foster Home Spaces Available to ACYF | 4,044 | 5,020 | 4,905 | 5,668 | 6,469 | 6,498 | 6,639 | 6,283 |
| Number of New Foster Homes | 410 | 400 | 397 | 328 | 426 | 432 | 435 | 794 |
| Number of Foster Homes Closed | 197 | 410 | 258 | 295 | 166 | 232 | 100 | 445 |
| Number and Percentage of Foster Homes Receiving Visitation In the Last Qtr. Of Reporting Period | 1,723 (78.7%) | 1,791 (79.0%) | 1,672 (63.3%) | 1,833 (64.0%) | 1,790 (55.0%) | 2,116 (66.6%) | 1,739 (49.5%) | 2,137 (59.5%) |
| Number and Percentage of Foster Homes not Receiving Visitation | 466 (21.3%) | 476 (21.0%) | 968 (36.7%) | 1,030 (36.0%) | 1,466 (45.0%) | 1,061 (33.4%) | 1,773 (50.5%) | 1,455 (40.5%) |
| Number of Children Leaving DES Custody | 2,883 | 2,726 | 3,488 | 3,506 | 3,595 | 3,553 | 3,824 | 3,512 |
| Number of Children With a Case Plan Goal of Adoption | 1,893 | 2,044 | 2,170 | 2,345 | 2,302 | 2,439 | 2,186 | 1,954 |
| Number of Children With a Finalized Adoption | 373 | 430 | 570 | 586 | 736 | 695 | 773 | 765 |

¹ Since the appeals process delays the substantiation of reports, revisions to the substantiation rate for the prior reporting period will occur with every semi-annual report produced.

Reports of Abuse & Neglect

Child abuse and neglect are defined in A.R.S. §8-201 and A.R.S. §13-3623 (A). These definitions provide the major categories in this report.

Between October 1, 2007 and March 31, 2008, there were 17,628 incoming communications to the Child Abuse Hotline that met the criteria for a report of abuse or neglect. Of these, 215 were within the jurisdiction of military or tribal governments and were referred to those jurisdictions. This compares to 18,078 incoming communications received during the last reporting period which met the criteria of a report of abuse or neglect.

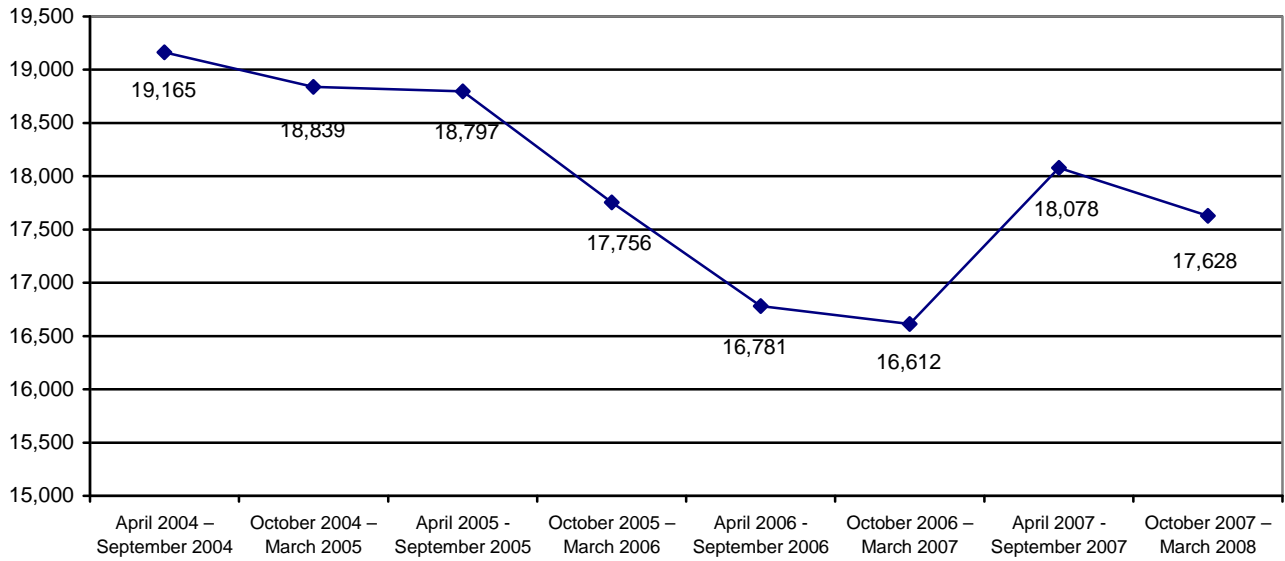
Table 1 shows the number of reports received by the Department by category of maltreatment for the last eight reporting periods. The table shows that for the current reporting period 10,449 or 59.2 percent of the 17,628 reports of maltreatment were related to allegations of neglect, 6,005 or 34.1 percent of the reports were related to allegations of physical abuse, 980 or 5.6 percent of the reports were related to allegations of sexual abuse, and 194 or 1.1 percent of the reports were related to allegations of emotional abuse.

**TABLE 1
REPORTS BY REPORTING PERIOD AND TYPE OF MALTREATMENT**

| | Neglect | Physical Abuse | Sexual Abuse | Emotional Abuse | Total |
|-----------------------------|-----------------|----------------|---------------|-----------------|------------------|
| April 2004 – September 2004 | 11,604 60.5% | 6,028 31.5% | 1,178 6.1% | 355 1.9% | 19,165 100.0% |
| October 2004 – March 2005 | 10,950 58.2% | 6,504 34.5% | 1,112 5.9% | 273 1.4% | 18,839 100.0% |
| April 2005 - September 2005 | 11,282 60.0% | 6,139 32.7% | 1,135 6.0% | 241 1.3% | 18,797 100.0% |
| October 2005 – March 2006 | 10,592 59.6% | 5,890 33.2% | 1,010 5.7% | 264 1.5% | 17,756 100.0% |
| April 2006 - September 2006 | 10,201 60.7% | 5,346 31.9% | 1,019 6.1% | 215 1.3% | 16,781 100.0% |
| October 2006 – March 2007 | 9,838 59.2% | 5,571 33.5% | 1,007 6.1% | 196 1.2% | 16,612 100.0% |
| April 2007 – September 2007 | 10,922 60.4% | 5,836 32.3% | 1,108 6.1% | 212 1.2% | 18,078 100.0% |
| October 2007 – March 2008 | 10,449 59.2% | 6,005 34.1% | 980 5.6% | 194 1.1% | 17,628 100.0% |

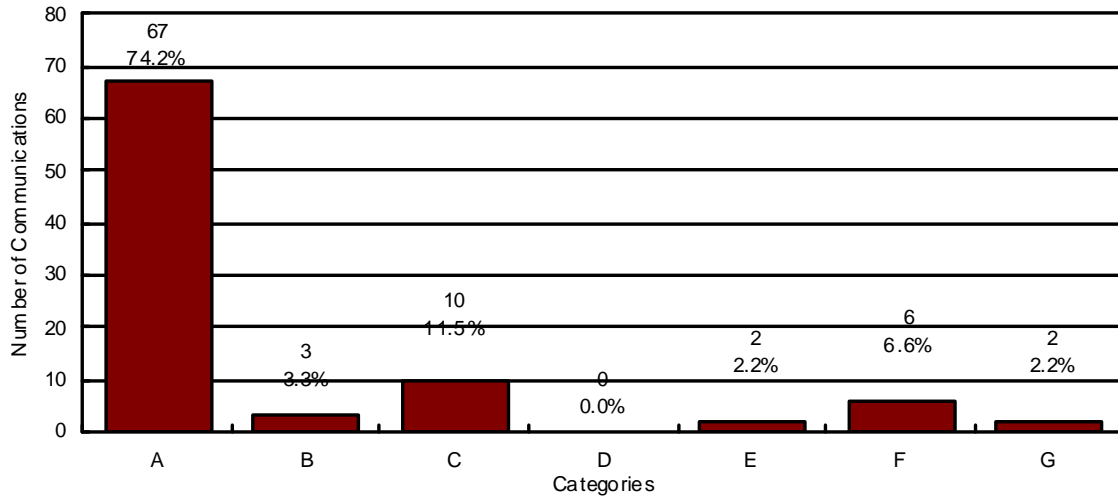
Chart 1 shows that the number of CPS reports received by the CPS Hotline has increased over the past year. Comparing the current reporting period to the prior reporting period, the number of reports received decreased by 450 reports or 2.5%.

**CHART 1
REPORTS OF CHILD ABUSE AND NEGLECT BY REPORTING PERIOD**



In addition to the 17,628 reports during the current reporting period, the Child Abuse Hotline received 12,393 communications that did not meet the statutory criteria of a report of maltreatment. A random sample of these communications is contained in the chart below.

CHART 2
SAMPLE OF COMMUNICATIONS TO THE CHILD ABUSE HOTLINE THAT DO NOT MEET THE STATUTORY REQUIREMENTS OF A REPORT OF ABUSE OR NEGLECT



N=90

- A = Concern Only/No Allegation of Child Abuse or Neglect**
- B = Out of CPS Jurisdiction**
- C = Call Appropriate for Law Enforcement Jurisdiction²**
- D = Non-Caretaker Neglect/Child No Longer at Risk**
- E = Insufficient Information**
- F = Truancy/Custody Issues**
- G = Current Case Questions or Referrals**

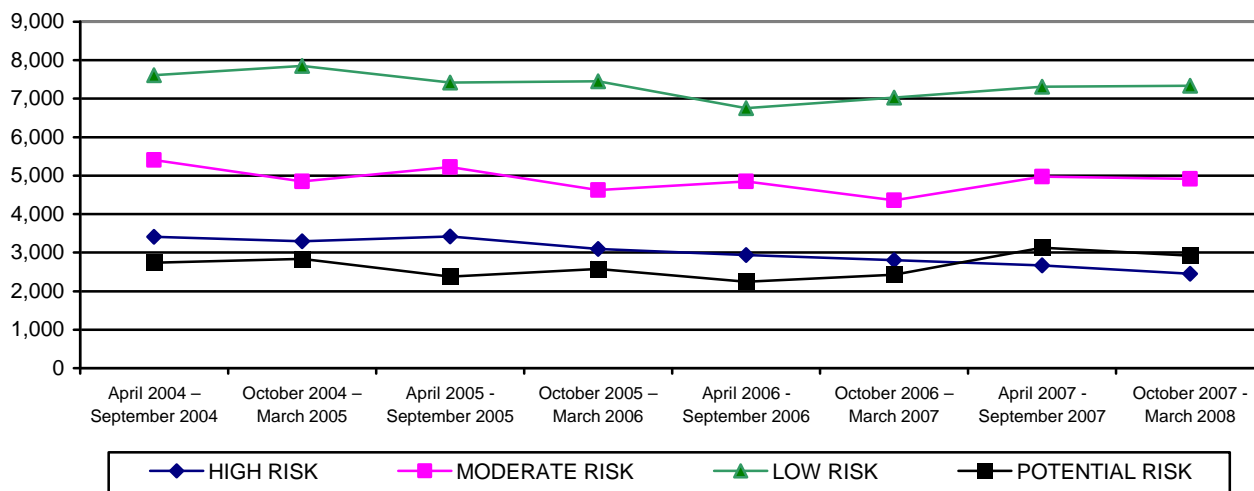
All communications that do not meet the statutory requirements for a field investigation of abuse or neglect are reviewed within 48 hours by DES quality assurance staff.

² The category “Call Appropriate for Law Enforcement Jurisdiction” refers to a situation where the alleged perpetrator is not a parent or primary caretaker and the allegations, if true, would constitute a crime.

For the current reporting period, the CPS Hotline classified 13.9 percent of the reports received as high risk, 27.9 percent as moderate risk, 41.7 percent as low risk, and 16.5 percent as potential risk.

For the current reporting period, the CPS Hotline classified 1.1 percent of CPS reports as emotional abuse, 59.2 percent as neglect, 34.1 percent as physical abuse, and 5.6 percent as sexual abuse.

**CHART 3
NUMBER OF REPORTS RECEIVED BY RISK LEVEL**



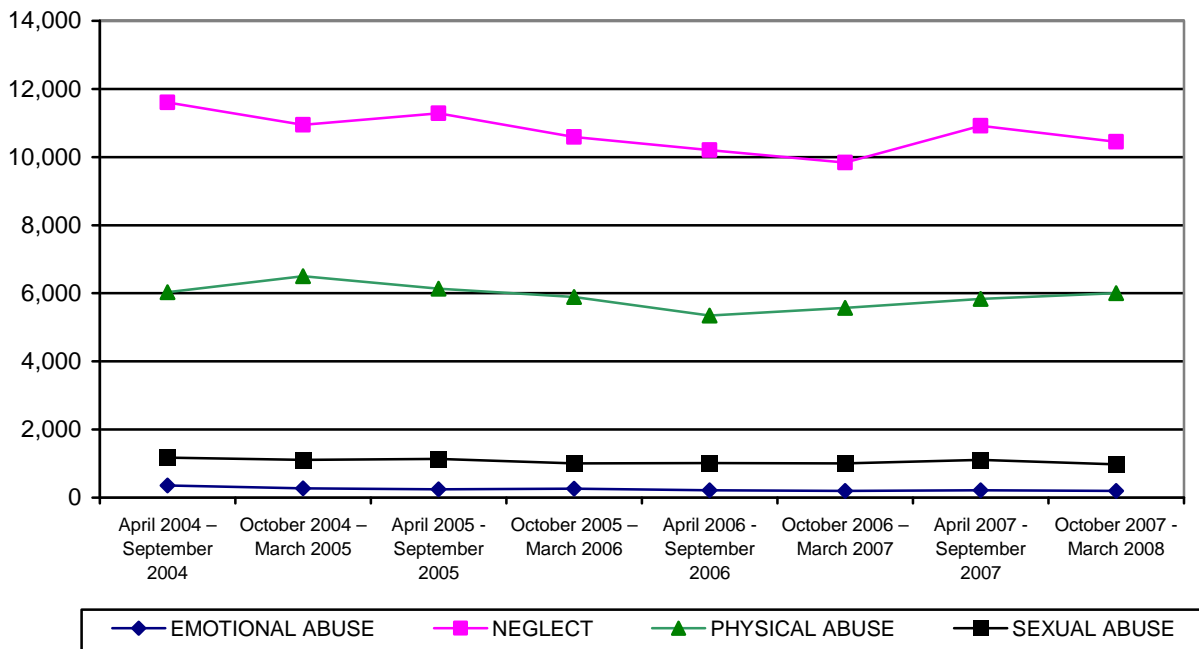
**TABLE 2
NUMBER OF REPORTS RECEIVED BY RISK LEVEL AND COUNTY FOR PERIOD OF
OCTOBER 1, 2007 THROUGH MARCH 31, 2008**

| COUNTY | HIGH | MODERATE | LOW | POTENTIAL | TOTAL | % OF TOTAL |
|------------|-------|----------|-------|-----------|--------|------------|
| APACHE | 14 | 27 | 36 | 17 | 94 | 0.5% |
| COCHISE | 48 | 142 | 189 | 79 | 458 | 2.6% |
| COCONINO | 62 | 92 | 165 | 66 | 385 | 2.2% |
| GILA | 29 | 46 | 73 | 21 | 169 | 1.0% |
| GRAHAM | 14 | 21 | 35 | 14 | 84 | 0.5% |
| GREENLEE | 1 | 5 | 10 | 7 | 23 | 0.1% |
| LA PAZ | 11 | 17 | 26 | 9 | 63 | 0.4% |
| MARICOPA | 1,487 | 2,908 | 4,172 | 1,685 | 10,252 | 58.1% |
| MOHAVE | 83 | 162 | 245 | 86 | 576 | 3.3% |
| NAVAJO | 49 | 62 | 98 | 44 | 253 | 1.4% |
| PIMA | 341 | 883 | 1,453 | 568 | 3,245 | 18.4% |
| PINAL | 179 | 256 | 404 | 165 | 1,004 | 5.7% |
| SANTA CRUZ | 16 | 23 | 42 | 11 | 92 | 0.5% |
| YAVAPAI | 57 | 160 | 222 | 70 | 509 | 2.9% |
| YUMA | 62 | 115 | 169 | 75 | 421 | 2.4% |
| STATEWIDE | 2,453 | 4,919 | 7,339 | 2,917 | 17,628 | 100.0% |
| % OF TOTAL | 13.9% | 27.9% | 41.7% | 16.5% | 100.0% | |

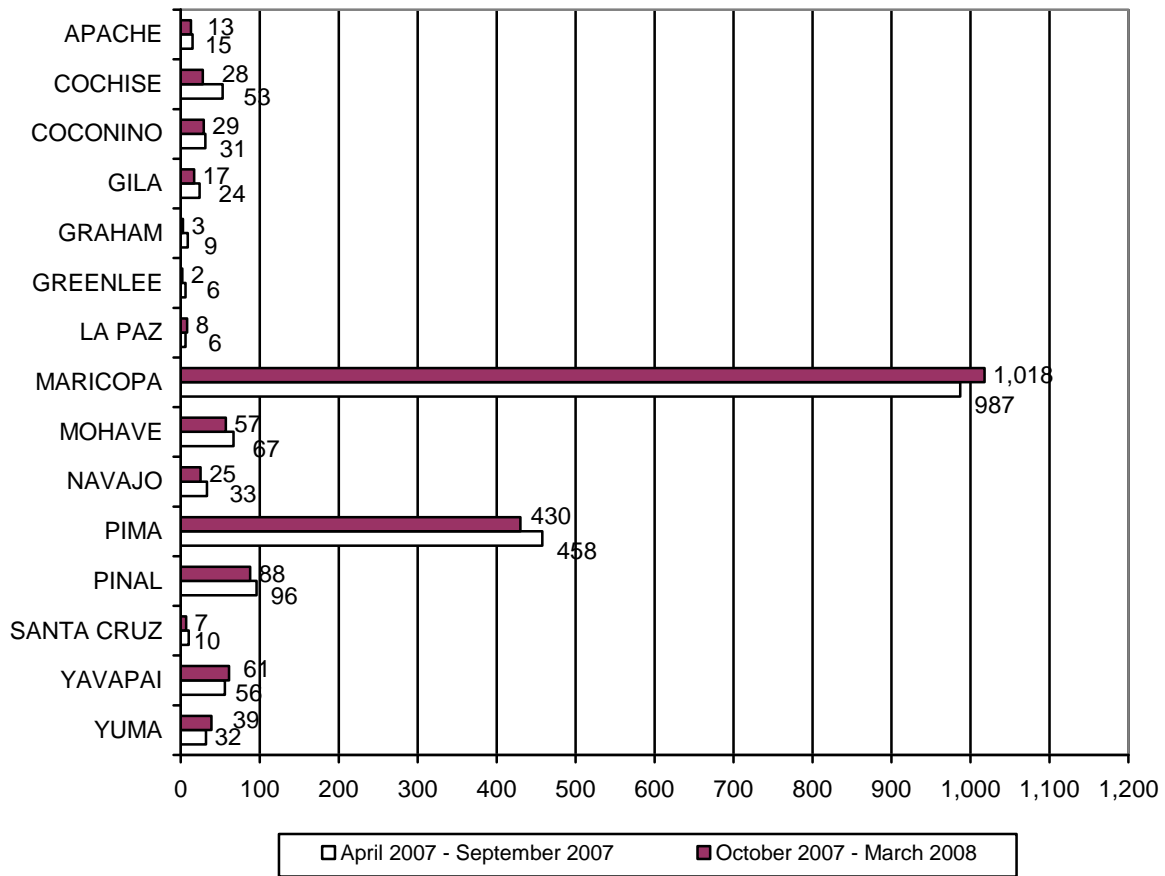
TABLE 3
NUMBER OF REPORTS RECEIVED BY RISK LEVEL AND COUNTY FOR PERIOD OF
APRIL 1, 2007 THROUGH SEPTEMBER 30, 2007

| COUNTY | HIGH | MODERATE | LOW | POTENTIAL | TOTAL | % OF TOTAL |
|------------|-------|----------|-------|-----------|--------|------------|
| APACHE | 13 | 24 | 34 | 16 | 87 | 0.5% |
| COCHISE | 45 | 144 | 230 | 75 | 494 | 2.7% |
| COCONINO | 64 | 133 | 146 | 59 | 402 | 2.2% |
| GILA | 36 | 61 | 80 | 46 | 223 | 1.2% |
| GRAHAM | 8 | 38 | 51 | 13 | 110 | 0.6% |
| GREENLEE | 8 | 7 | 8 | 3 | 26 | 0.1% |
| LA PAZ | 12 | 15 | 24 | 11 | 62 | 0.3% |
| MARICOPA | 1,666 | 2,747 | 4,103 | 1,768 | 10,284 | 57.0% |
| MOHAVE | 97 | 200 | 254 | 101 | 652 | 3.6% |
| NAVAJO | 70 | 90 | 140 | 47 | 347 | 1.9% |
| PIMA | 348 | 879 | 1,394 | 579 | 3,200 | 17.7% |
| PINAL | 175 | 287 | 401 | 194 | 1,057 | 5.9% |
| SANTA CRUZ | 12 | 33 | 54 | 9 | 108 | 0.6% |
| YAVAPAI | 49 | 182 | 253 | 117 | 601 | 3.3% |
| YUMA | 65 | 131 | 143 | 86 | 425 | 2.4% |
| STATEWIDE | 2,668 | 4,971 | 7,315 | 3,124 | 18,078 | 100.0% |
| % OF TOTAL | 14.8% | 27.5% | 40.4% | 17.3% | 100.0% | |

CHART 4
NUMBER OF REPORTS RECEIVED BY TYPE OF MALTREATMENT



**CHART 9
NUMBER OF REPORTS ASSIGNED FOR INVESTIGATION WHERE A REMOVAL OCCURRED**



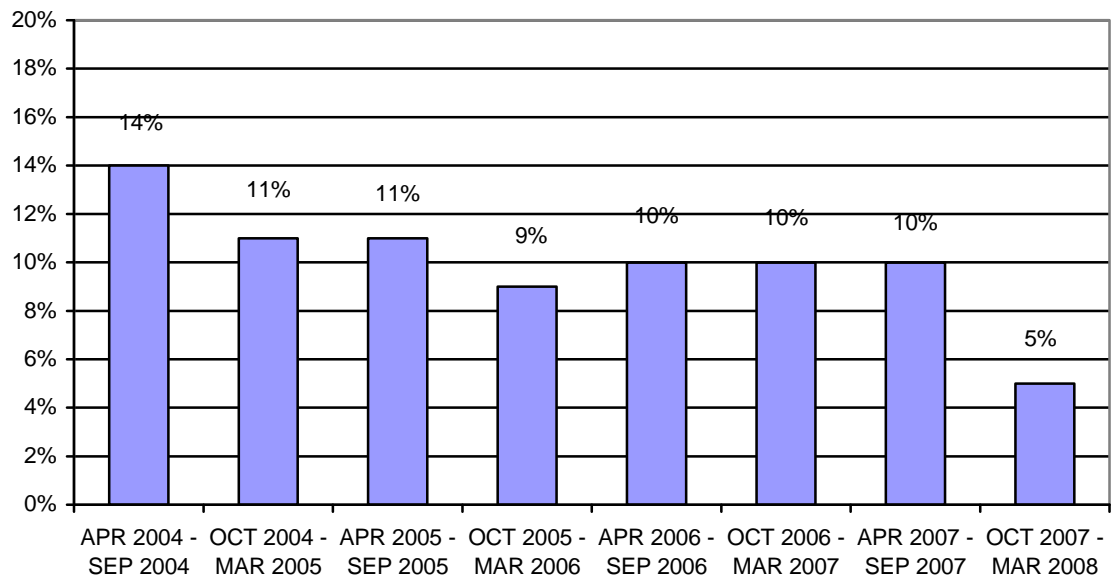
COMPLETED INVESTIGATIONS

Substantiated reports are reports where the Department has determined that at least one of the allegations in the report of abuse and neglect is true. The number of reports that are considered substantiated are a subset of the total number of reports that were received, investigated, and closed during the reporting period.

The preliminary number of CPS reports that are substantiated for this reporting period is 739. For the prior reporting period, the number of CPS reports that were assigned for investigation that resulted in substantiated findings was revised from 1,011 to 1,413 to reflect further results of parents’ rights to due process. For the current reporting period, 32.1 percent of substantiated investigative findings were classified as high risk, 36.6 percent as moderate risk, and 31.3 percent as low risk. Potential risk reports are not substantiated by CPS. For the prior reporting period, 26.4 percent of substantiated investigative findings were classified as high risk, 39.0 percent as moderate risk, and 34.6 percent as low risk.

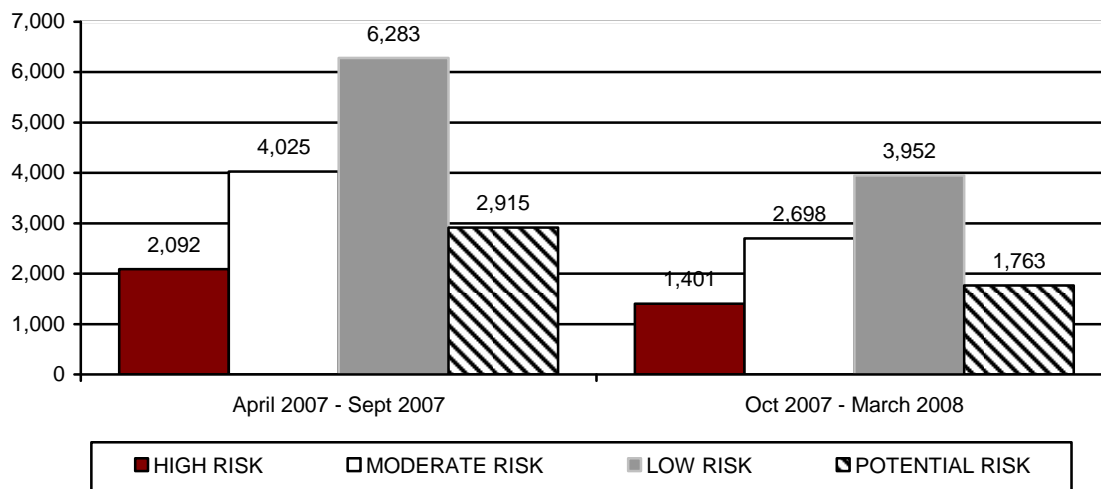
- There were 14,540 reports received during the current reporting period that were subject to substantiation. This results in a preliminary substantiation rate of 5 percent for the current reporting period.
- There were 14,779 reports received during the prior reporting period that were subject to substantiation. This results in a 10 percent substantiation rate for the prior reporting period.

**CHART 10
SUBSTANTIATION RATE BY REPORTING PERIOD**



The preliminary number of CPS investigations that resulted in an unsubstantiated finding for this reporting period was 9,814. For the prior reporting period, the number of CPS reports that were unsubstantiated was revised from 11,592 to 15,315 to reflect updated information in the CHILDS case management information system. For the prior reporting period, 13.7 percent of unsubstantiated reports were classified as high risk, 26.3 percent as moderate risk, 41.0 percent as low risk, and 19.0 percent as potential risk. Just over one percent of these unsubstantiated reports related to emotional abuse, 61.6 percent to neglect, 31.7 percent to physical abuse, and 5.4 percent to sexual abuse.

**CHART 15
NUMBER OF REPORTS ASSIGNED FOR INVESTIGATION BY RISK LEVEL AND REPORTING PERIOD THAT RESULTED IN UNSUBSTANTIATION**



**TABLE 25
NUMBER OF REPORTS ASSIGNED FOR INVESTIGATION BY RISK LEVEL AND COUNTY THAT RESULTED IN UNSUBSTANTIATION FOR PERIOD OF OCTOBER 1, 2007 THROUGH MARCH 31, 2008**

| COUNTY | HIGH | MODERATE | LOW | POTENTIAL | TOTAL | % OF TOTAL |
|------------|-------|----------|-------|-----------|--------|------------|
| APACHE | 5 | 4 | 7 | 2 | 18 | 0.2% |
| COCHISE | 32 | 79 | 100 | 49 | 260 | 2.6% |
| COCONINO | 12 | 26 | 49 | 18 | 105 | 1.1% |
| GILA | 11 | 26 | 50 | 6 | 93 | 0.9% |
| GRAHAM | 4 | 9 | 15 | 3 | 31 | 0.3% |
| GREENLEE | 0 | 0 | 2 | 0 | 2 | <0.1% |
| LA PAZ | 6 | 11 | 16 | 6 | 39 | 0.4% |
| MARICOPA | 945 | 1,727 | 2,312 | 1,048 | 6,032 | 61.5% |
| MOHAVE | 41 | 63 | 118 | 45 | 267 | 2.7% |
| NAVAJO | 29 | 42 | 65 | 28 | 164 | 1.7% |
| PIMA | 155 | 389 | 711 | 336 | 1,591 | 16.2% |
| PINAL | 85 | 125 | 203 | 99 | 512 | 5.2% |
| SANTA CRUZ | 9 | 10 | 26 | 7 | 52 | 0.5% |
| YAVAPAI | 33 | 119 | 175 | 65 | 392 | 4.0% |
| YUMA | 34 | 68 | 103 | 51 | 256 | 2.6% |
| STATEWIDE | 1,401 | 2,698 | 3,952 | 1,763 | 9,814 | 100.0% |
| % OF TOTAL | 14.3% | 27.5% | 40.2% | 18.0% | 100.0% | |

TABLE 26
NUMBER OF REPORTS ASSIGNED FOR INVESTIGATION BY RISK LEVEL AND COUNTY
THAT RESULTED IN UNSUBSTANTIATION FOR PERIOD OF
APRIL 1, 2007 THROUGH SEPTEMBER 30, 2007

| COUNTY | HIGH | MODERATE | LOW | POTENTIAL | TOTAL | % OF TOTAL |
|------------|-------|----------|-------|-----------|--------|------------|
| APACHE | 6 | 10 | 13 | 3 | 32 | 0.2% |
| COCHISE | 33 | 110 | 218 | 74 | 435 | 2.8% |
| COCONINO | 30 | 67 | 79 | 45 | 221 | 1.4% |
| GILA | 20 | 48 | 68 | 40 | 176 | 1.1% |
| GRAHAM | 8 | 30 | 49 | 12 | 99 | 0.7% |
| GREENLEE | 6 | 7 | 4 | 3 | 20 | 0.1% |
| LA PAZ | 10 | 10 | 20 | 10 | 50 | 0.3% |
| MARICOPA | 1,419 | 2,379 | 3,727 | 1,698 | 9,223 | 60.3% |
| MOHAVE | 64 | 150 | 208 | 89 | 511 | 3.3% |
| NAVAJO | 37 | 68 | 119 | 43 | 267 | 1.7% |
| PIMA | 214 | 609 | 1,035 | 509 | 2,367 | 15.6% |
| PINAL | 142 | 234 | 338 | 176 | 890 | 5.9% |
| SANTA CRUZ | 11 | 30 | 48 | 9 | 98 | 0.6% |
| YAVAPAI | 36 | 158 | 230 | 118 | 542 | 3.5% |
| YUMA | 56 | 115 | 127 | 86 | 384 | 2.5% |
| STATEWIDE | 2,092 | 4,025 | 6,283 | 2,915 | 15,315 | 100.0% |
| % OF TOTAL | 13.7% | 26.3% | 41.0% | 19.0% | 100.0% | |

CHART 16
NUMBER OF REPORTS ASSIGNED FOR INVESTIGATION BY TYPE OF MALTREATMENT
THAT RESULTED IN UNSUBSTANTIATION BY REPORTING PERIOD

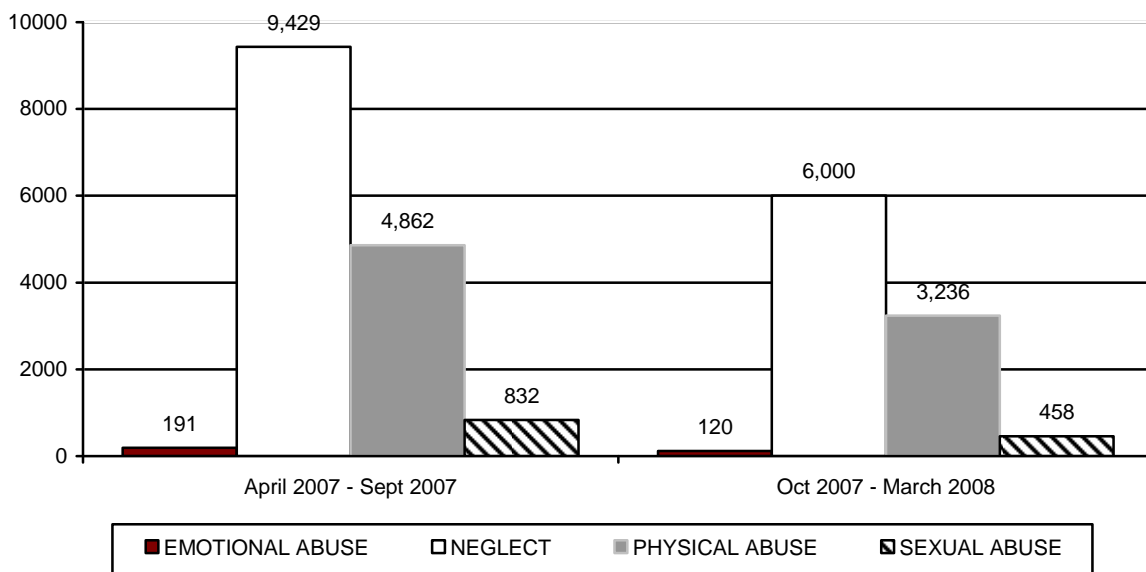


TABLE 27
NUMBER OF REPORTS ASSIGNED FOR INVESTIGATION BY TYPE OF MALTREATMENT
BY COUNTY THAT RESULTED IN UNSUBSTANTIATION FOR PERIOD OF
OCTOBER 1, 2007 THROUGH MARCH 31, 2008

| COUNTY | EMOTIONAL ABUSE | NEGLECT | PHYSICAL ABUSE | SEXUAL ABUSE | TOTAL | % OF TOTAL |
|------------|-----------------|---------|----------------|--------------|--------|------------|
| APACHE | 0 | 14 | 3 | 1 | 18 | 0.2% |
| COCHISE | 4 | 160 | 83 | 13 | 260 | 2.6% |
| COCONINO | 2 | 53 | 44 | 6 | 105 | 1.1% |
| GILA | 2 | 60 | 27 | 4 | 93 | 0.9% |
| GRAHAM | 1 | 19 | 10 | 1 | 31 | 0.3% |
| GREENLEE | 0 | 1 | 1 | 0 | 2 | <0.1% |
| LA PAZ | 0 | 24 | 11 | 4 | 39 | 0.4% |
| MARICOPA | 55 | 3,649 | 2,031 | 297 | 6,032 | 61.5% |
| MOHAVE | 3 | 178 | 78 | 8 | 267 | 2.7% |
| NAVAJO | 3 | 102 | 50 | 9 | 164 | 1.7% |
| PIMA | 30 | 977 | 539 | 45 | 1,591 | 16.2% |
| PINAL | 8 | 318 | 157 | 29 | 512 | 5.2% |
| SANTA CRUZ | 0 | 31 | 17 | 4 | 52 | 0.5% |
| YAVAPAI | 9 | 242 | 113 | 28 | 392 | 4.0% |
| YUMA | 3 | 172 | 72 | 9 | 256 | 2.6% |
| STATEWIDE | 120 | 6,000 | 3,236 | 458 | 9,814 | 100.0% |
| % OF TOTAL | 1.2% | 61.1% | 33.0% | 4.7% | 100.0% | |

TABLE 28
NUMBER OF REPORTS ASSIGNED FOR INVESTIGATION BY TYPE OF MALTREATMENT
BY COUNTY THAT RESULTED IN UNSUBSTANTIATION FOR PERIOD OF
APRIL 1, 2007 THROUGH SEPTEMBER 30, 2007

| COUNTY | EMOTIONAL ABUSE | NEGLECT | PHYSICAL ABUSE | SEXUAL ABUSE | TOTAL | % OF TOTAL |
|------------|-----------------|---------|----------------|--------------|--------|------------|
| APACHE | 0 | 22 | 10 | 0 | 32 | 0.2% |
| COCHISE | 6 | 270 | 141 | 18 | 435 | 2.8% |
| COCONINO | 2 | 131 | 70 | 18 | 221 | 1.4% |
| GILA | 2 | 115 | 49 | 10 | 176 | 1.1% |
| GRAHAM | 1 | 56 | 32 | 10 | 99 | 0.7% |
| GREENLEE | 0 | 13 | 5 | 2 | 20 | 0.1% |
| LA PAZ | 1 | 31 | 12 | 6 | 50 | 0.3% |
| MARICOPA | 114 | 5,616 | 2,972 | 520 | 9,222 | 60.3% |
| MOHAVE | 2 | 328 | 157 | 24 | 511 | 3.3% |
| NAVAJO | 2 | 182 | 78 | 5 | 267 | 1.7% |
| PIMA | 38 | 1,447 | 784 | 98 | 2,367 | 15.6% |
| PINAL | 14 | 550 | 262 | 64 | 890 | 5.9% |
| SANTA CRUZ | 2 | 59 | 32 | 5 | 98 | 0.6% |
| YAVAPAI | 4 | 344 | 167 | 27 | 542 | 3.5% |
| YUMA | 3 | 265 | 91 | 25 | 384 | 2.5% |
| STATEWIDE | 191 | 9,429 | 4,862 | 832 | 15,314 | 100.0% |
| % OF TOTAL | 1.3% | 61.6% | 31.7% | 5.4% | 100.0% | |

SAFE HAVEN INFANTS

There were no newborn infants delivered to Safe Haven providers during the October 2007 - March 2008 reporting period. This compares to one infant being delivered to Safe Haven providers during the April 2007 – September 2007 reporting period.

CHILDREN ENTERING OUT-OF-HOME CARE

During this reporting period, 3,742 children entered care as compared to 3,924 children for the April 2007 through September 2007 reporting period. Chart 17 displays children entering out-of-home care by reporting period. The number of children entering out-of-home placement through voluntary foster care agreements for this reporting period was 408, which represents 10.9 percent of the children entering care this reporting period.

**CHART 17
TOTAL CHILDREN ENTERING OUT-OF-HOME CARE BY REPORTING PERIOD**

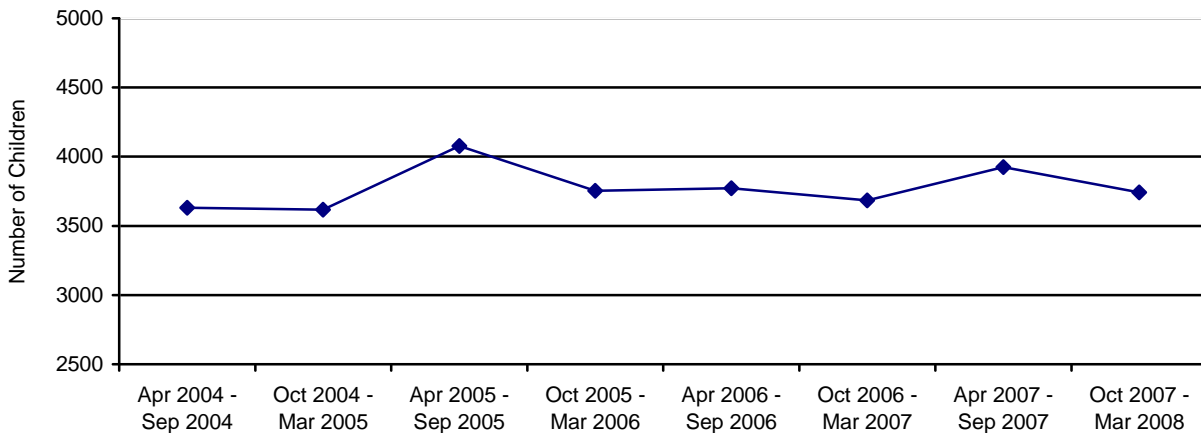


Table 29 shows the number of children entering out-of-home care through voluntary placements for the current reporting period by county. Voluntary foster care may be provided when the parents or legal guardians of a child have requested such assistance and have signed a legally binding written agreement, not to exceed 90 days, for the temporary placement of the child in foster care while risk factors are addressed to enable the child to live safely at home. A voluntary foster care agreement may be utilized only when the circumstances that brought the child into foster care are likely to be remedied within the 90 day period of time. A.R.S. §8-806 authorizes the Department to provide voluntary foster care placement for children for a period not to exceed 90 days and no more than twice within 24 consecutive months.

**TABLE 29
NUMBER OF CHILDREN ENTERING OUT-OF-HOME CARE BY COUNTY WHO ARE
VOLUNTARY PLACEMENTS FOR CHILDREN UNDER THE AGE OF EIGHTEEN FOR THE
PERIOD OF OCTOBER 1, 2007 THROUGH MARCH 31, 2008**

| COUNTY | NUMBER OF CHILDREN REMOVED | % OF TOTAL REMOVALS | NUMBER OF CHILDREN ENTERING OUT-OF-HOME CARE UNDER THE AGE OF EIGHTEEN WHO ARE VOLUNTARY PLACEMENTS | % OF CHILDREN REMOVED WHO ARE VOLUNTARY PLACEMENTS |
|------------|----------------------------|---------------------|---|--|
| APACHE | 29 | 0.8% | 8 | 27.6% |
| COCHISE | 52 | 1.4% | 2 | 3.8% |
| COCONINO | 61 | 1.6% | 11 | 18.0% |
| GILA | 35 | 0.9% | 0 | 0% |
| GRAHAM | 11 | 0.3% | 0 | 0% |
| GREENLEE | 0 | 0.0% | 0 | 0% |
| LA PAZ | 15 | 0.4% | 12 | 80.0% |
| MARICOPA | 1,999 | 53.4% | 232 | 11.6% |
| MOHAVE | 108 | 2.9% | 39 | 36.1% |
| NAVAJO | 57 | 1.5% | 8 | 14.0% |
| PIMA | 935 | 25.0% | 73 | 7.8% |
| PINAL | 192 | 5.1% | 4 | 2.1% |
| SANTA CRUZ | 14 | 0.4% | 1 | 7.1% |
| YAVAPAI | 153 | 4.1% | 7 | 4.6% |
| YUMA | 81 | 2.2% | 11 | 13.6% |
| STATEWIDE | 3,742 | 100.0% | 408 | 10.9% |

TABLE 30
NUMBER OF CHILDREN ENTERING OUT-OF-HOME CARE BY COUNTY WHO ARE
VOLUNTARY PLACEMENTS FOR CHILDREN UNDER THE AGE OF EIGHTEEN FOR THE
PERIOD OF APRIL 1, 2007 THROUGH SEPTEMBER 30, 2007

| COUNTY | NUMBER OF CHILDREN REMOVED | % OF TOTAL REMOVALS | NUMBER OF CHILDREN ENTERING OUT-OF-HOME CARE UNDER THE AGE OF EIGHTEEN WHO ARE VOLUNTARY PLACEMENTS | % OF CHILDREN REMOVED WHO ARE VOLUNTARY PLACEMENTS |
|------------|----------------------------|---------------------|---|--|
| APACHE | 25 | 0.6% | 6 | 24.0% |
| COCHISE | 94 | 2.4% | 10 | 10.6% |
| COCONINO | 65 | 1.7% | 5 | 7.7% |
| GILA | 40 | 1.0% | 0 | 0.0% |
| GRAHAM | 13 | 0.3% | 2 | 15.4% |
| GREENLEE | 10 | 0.3% | 0 | 0.0% |
| LA PAZ | 13 | 0.3% | 9 | 69.2% |
| MARICOPA | 1,998 | 51.0% | 265 | 13.3% |
| MOHAVE | 119 | 3.0% | 37 | 31.1% |
| NAVAJO | 80 | 2.0% | 16 | 20.0% |
| PIMA | 951 | 24.2% | 74 | 7.8% |
| PINAL | 270 | 6.9% | 7 | 2.6% |
| SANTA CRUZ | 23 | 0.6% | 2 | 8.7% |
| YAVAPAI | 133 | 3.4% | 9 | 6.8% |
| YUMA | 90 | 2.3% | 26 | 28.9% |
| STATEWIDE | 3,924 | 100.0% | 468 | 11.9% |

The Department recognizes that the unwarranted re-entry into foster care is something to be avoided and continues to take steps to ensure that these re-entries are in the best interests of the child and family. In 2005 the Department began collaborating with the Chapin-Hall Center for Children on a measure to aid the Department in identifying key factors in re-entry into foster care. This will enable the Department to utilize cohort data and help to identify if changes are needed in policy or practices.

TABLE 31
NUMBER OF CHILDREN ENTERING OUT-OF-HOME CARE BY COUNTY FOR THE
PERIOD OF OCTOBER 1, 2007 THROUGH SEPTEMBER 30, 2008³

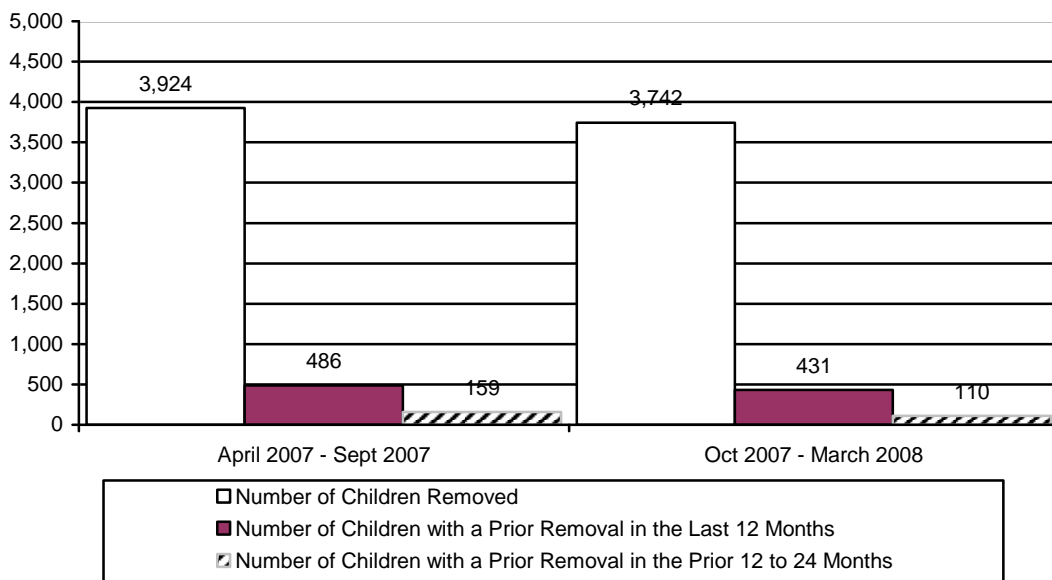
| COUNTY | NUMBER OF CHILDREN REMOVED | % OF TOTAL REMOVALS | NUMBER OF CHILDREN WITH A PRIOR REMOVAL IN THE LAST 12 MONTHS | % OF CHILDREN WITH A PRIOR REMOVAL IN THE LAST 12 MONTHS | NUMBER OF CHILDREN WITH A REMOVAL IN THE PRIOR 12 TO 24 MONTHS | % OF CHILDREN WITH A PRIOR REMOVAL IN THE PRIOR 12 TO 24 MONTHS |
|------------|----------------------------|---------------------|---|--|--|---|
| APACHE | 29 | 0.8% | 6 | 20.7% | 1 | 3.4% |
| COCHISE | 52 | 1.4% | 1 | 1.9% | 1 | 1.9% |
| COCONINO | 61 | 1.6% | 8 | 13.1% | 2 | 3.3% |
| GILA | 35 | 0.9% | 1 | 2.9% | 1 | 2.9% |
| GRAHAM | 11 | 0.3% | 1 | 9.1% | 0 | 0.0% |
| GREENLEE | 0 | 0.0% | 0 | 0.0% | 0 | 0.0% |
| LA PAZ | 15 | 0.4% | 2 | 13.3% | 0 | 0.0% |
| MARICOPA | 1,999 | 53.4% | 237 | 11.9% | 64 | 3.2% |
| MOHAVE | 108 | 2.9% | 28 | 25.9% | 0 | 0.0% |
| NAVAJO | 57 | 1.5% | 7 | 12.3% | 0 | 0.0% |
| PIMA | 935 | 25.0% | 100 | 10.7% | 32 | 3.4% |
| PINAL | 192 | 5.1% | 20 | 10.4% | 5 | 2.6% |
| SANTA CRUZ | 14 | 0.4% | 2 | 14.3% | 0 | 0.0% |
| YAVAPAI | 153 | 4.1% | 12 | 7.8% | 1 | 0.7% |
| YUMA | 81 | 2.2% | 6 | 7.4% | 3 | 3.7% |
| STATEWIDE | 3,742 | 100.0% | 431 | 11.5% | 110 | 2.9% |

³ These numbers differ from those reported in the April, 1 2006 through September 30, 2006 report. This is due to a change in the methodology for calculating the numbers. The new methodology is consistent with federal methodologies.

TABLE 32
NUMBER OF CHILDREN ENTERING OUT-OF-HOME CARE BY COUNTY FOR THE
PERIOD OF APRIL 1, 2007 THROUGH SEPTEMBER 30, 2007

| COUNTY | NUMBER OF CHILDREN REMOVED | % OF TOTAL REMOVALS | NUMBER OF CHILDREN WITH A PRIOR REMOVAL IN THE LAST 12 MONTHS | % OF CHILDREN WITH A PRIOR REMOVAL IN THE LAST 12 MONTHS | NUMBER OF CHILDREN WITH A REMOVAL IN THE PRIOR 12 TO 24 MONTHS | % OF CHILDREN WITH A PRIOR REMOVAL IN THE PRIOR 12 TO 24 MONTHS |
|------------|----------------------------|---------------------|---|--|--|---|
| APACHE | 25 | 0.6% | 0 | 0.0% | 0 | 0.0% |
| COCHISE | 94 | 2.4% | 13 | 13.8% | 3 | 3.2% |
| COCONINO | 65 | 1.7% | 6 | 9.2% | 2 | 3.1% |
| GILA | 40 | 1.0% | 6 | 15.0% | 1 | 2.5% |
| GRAHAM | 13 | 0.3% | 2 | 15.4% | 1 | 7.7% |
| GREENLEE | 10 | 0.3% | 2 | 20.0% | 0 | 0.0% |
| LA PAZ | 13 | 0.3% | 1 | 7.7% | 0 | 0.0% |
| MARICOPA | 1,998 | 51.0% | 276 | 13.8% | 68 | 3.4% |
| MOHAVE | 119 | 3.0% | 21 | 17.6% | 4 | 3.4% |
| NAVAJO | 80 | 2.0% | 6 | 7.5% | 4 | 5.0% |
| PIMA | 951 | 24.2% | 117 | 12.3% | 48 | 5.0% |
| PINAL | 270 | 6.9% | 16 | 5.9% | 13 | 4.8% |
| SANTA CRUZ | 23 | 0.6% | 3 | 13.0% | 0 | 0.0% |
| YAVAPAI | 133 | 3.4% | 7 | 5.3% | 10 | 7.5% |
| YUMA | 90 | 2.3% | 10 | 11.1% | 5 | 5.6% |
| STATEWIDE | 3,924 | 100.0% | 486 | 12.4% | 159 | 4.1% |

CHART 18
NUMBER OF CHILDREN ENTERING OUT-OF-HOME CARE BY REPORTING PERIOD



CHILDREN IN OUT-OF-HOME CARE

On March 31, 2008, there were 9,721 children in out-of-home care as compared to 9,701 children on September 30, 2007, an increase of 20 children. During this reporting period, 7,462 children or 76.8 percent were placed in family settings either with relatives or in foster homes. This compares to 7,317 or 75.4 percent of the children in the prior reporting period.

**CHART 19
NUMBER OF CHILDREN IN OUT-OF-HOME CARE ON THE LAST DAY OF THE REPORTING PERIOD BY REPORTING PERIOD**

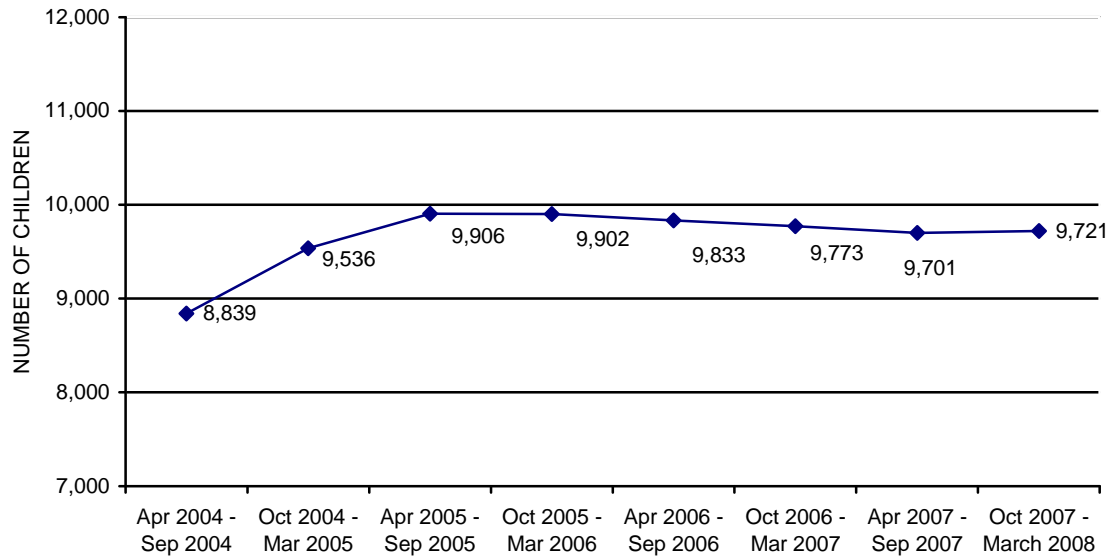


Chart 20 displays the decrease in the number of young children ages 0-6 placed in group homes. Comparing March 2006 to March 2008, the number of young children in group homes decreased by 27 children or 75.0 percent.

Chart 21 displays the decrease in the number of young children ages 0-3 placed in shelter care. Comparing March 2005 to March 2008, the number of young children in shelters decreased by 84 children or 77.8 percent. Chart 22 shows that the average length of time in shelter care continues to decrease; comparing September 2006 to September 2007, the average length of stay in shelter increased from 72 to 78 days, a decrease of 6 days or 8.3 percent.

CHART 20
THE NUMBER OF CHILDREN IN GROUP HOMES AGES 0 TO 6⁴

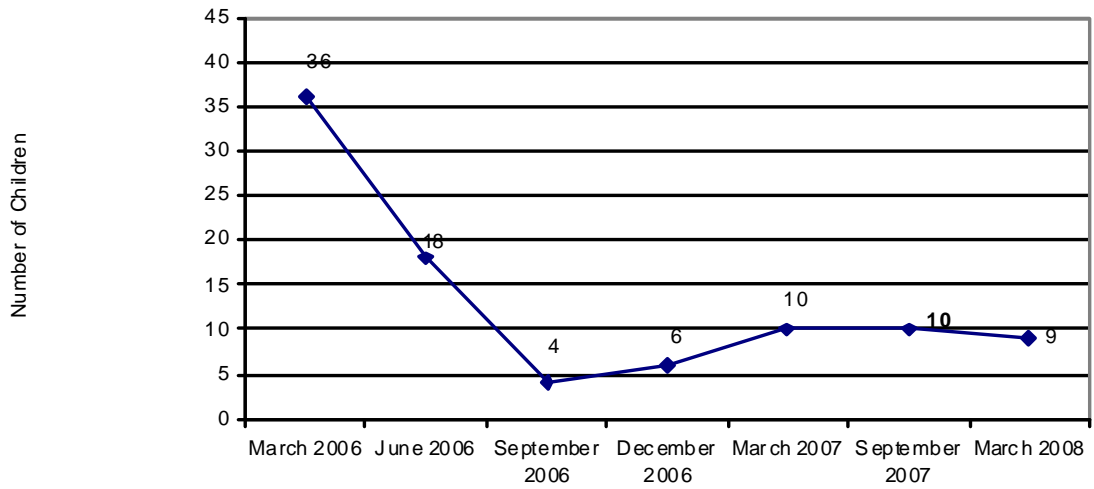
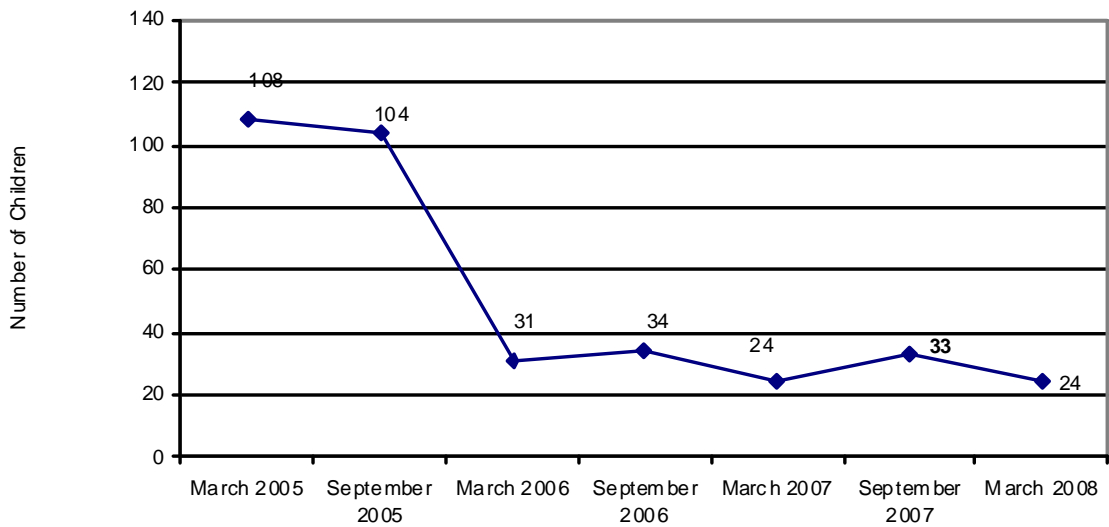
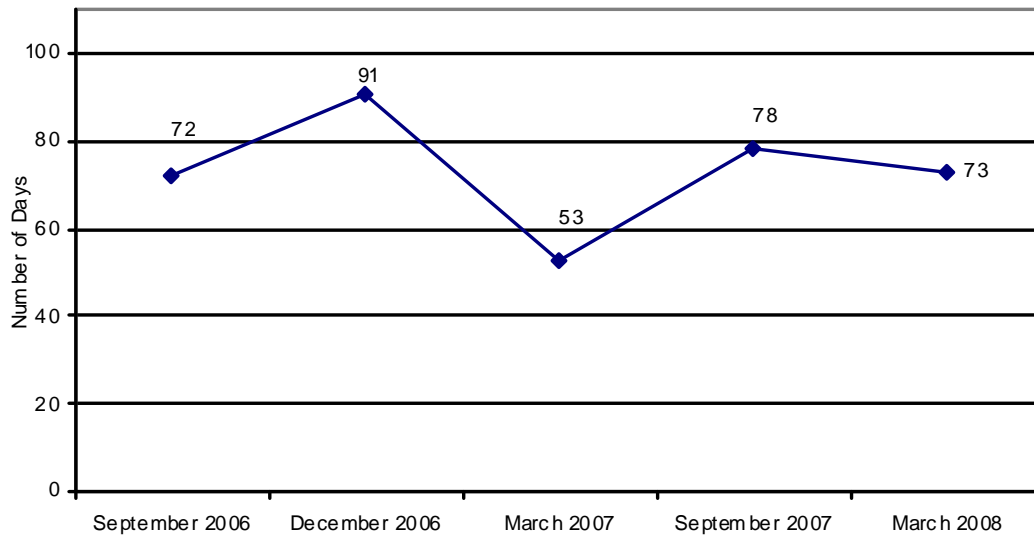


CHART 21
THE NUMBER OF CHILDREN IN SHELTER CARE AGES 0 TO 3



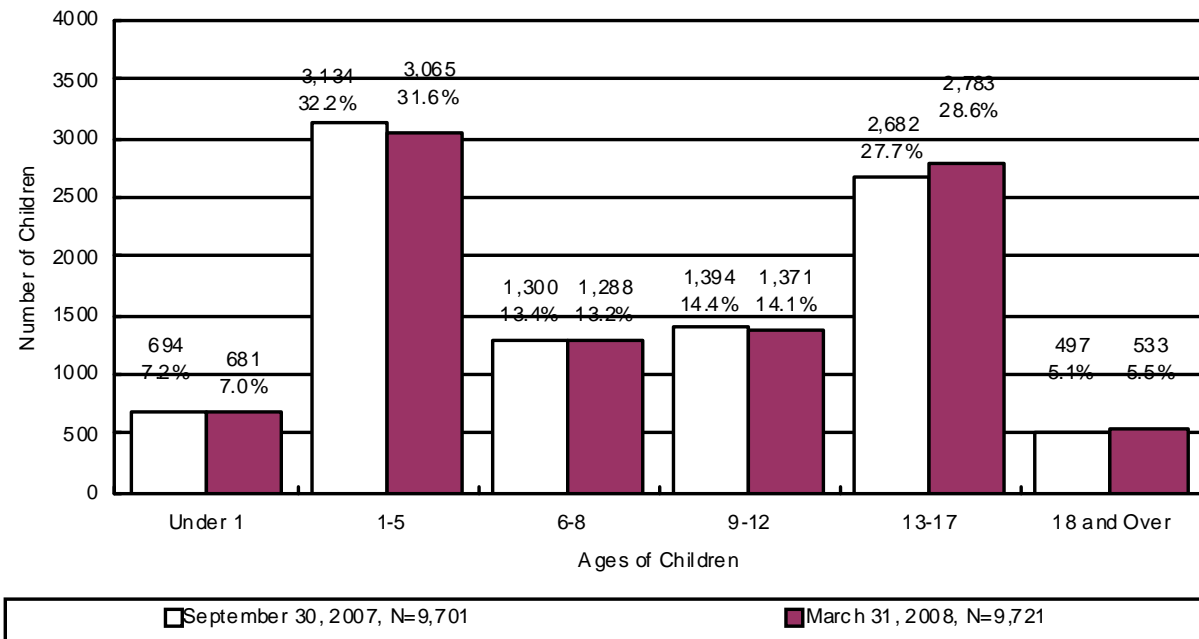
⁴ Excludes infants placed with their mothers and children placed in foster home group models

CHART 22
AVERAGE LENGTH OF STAY FOR CHILDREN AGES 0 TO 3, EXITING OUT-OF-HOME CARE WHO WERE IN A SHELTER PLACEMENT ON THE LAST DAY OF THE REPORTING PERIOD⁵



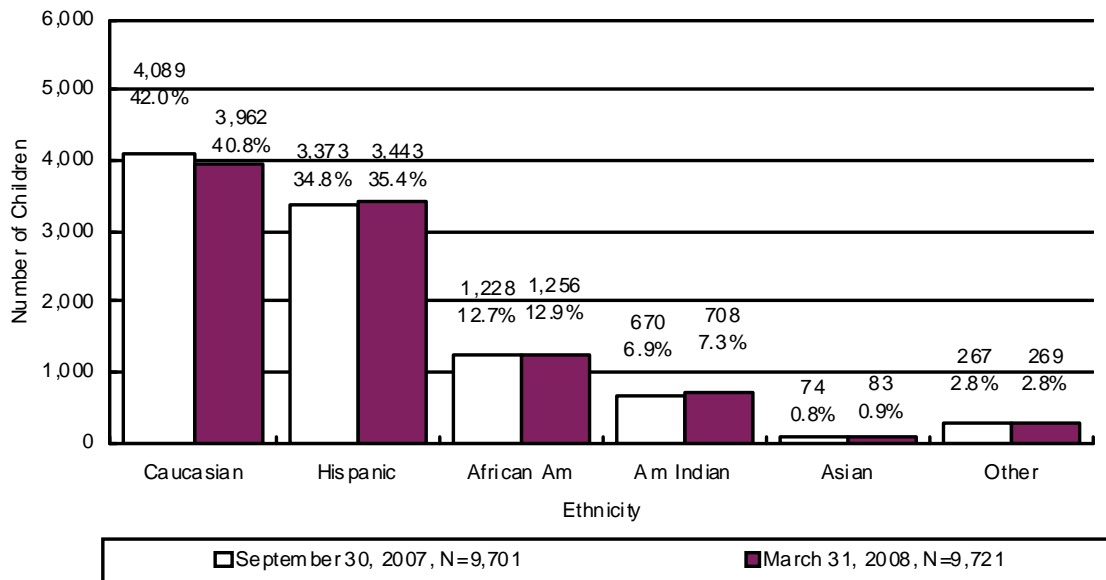
The majority of children in out-of-home care fall within the 1-5 age range (31.6 percent) and the 13-17 age range (28.6 percent). The majority of children in out-of-home care are either Caucasian (40.8 percent) or Hispanic (35.4 percent), followed by African American at 12.9 percent.

CHART 23
THE NUMBER OF CHILDREN IN OUT-OF-HOME CARE BY AGE



⁵ The September 2007 number has been revised.

CHART 24
THE NUMBER OF CHILDREN IN OUT-OF-HOME CARE BY ETHNICITY



For 52.8 percent of the children in out-of-home care, family reunification remains the primary case plan goal. This is followed by: adoption, 20.2 percent; independent living, 12.0 percent; long-term foster care, 3.8 percent; live with other relative, 2.3 percent; and, guardianship at 0.5 percent. For the remaining 8.3 percent of the children, the case plan goal is in the process of development.

CHART 25
THE NUMBER OF CHILDREN IN OUT-OF-HOME CARE BY CASE PLAN GOAL

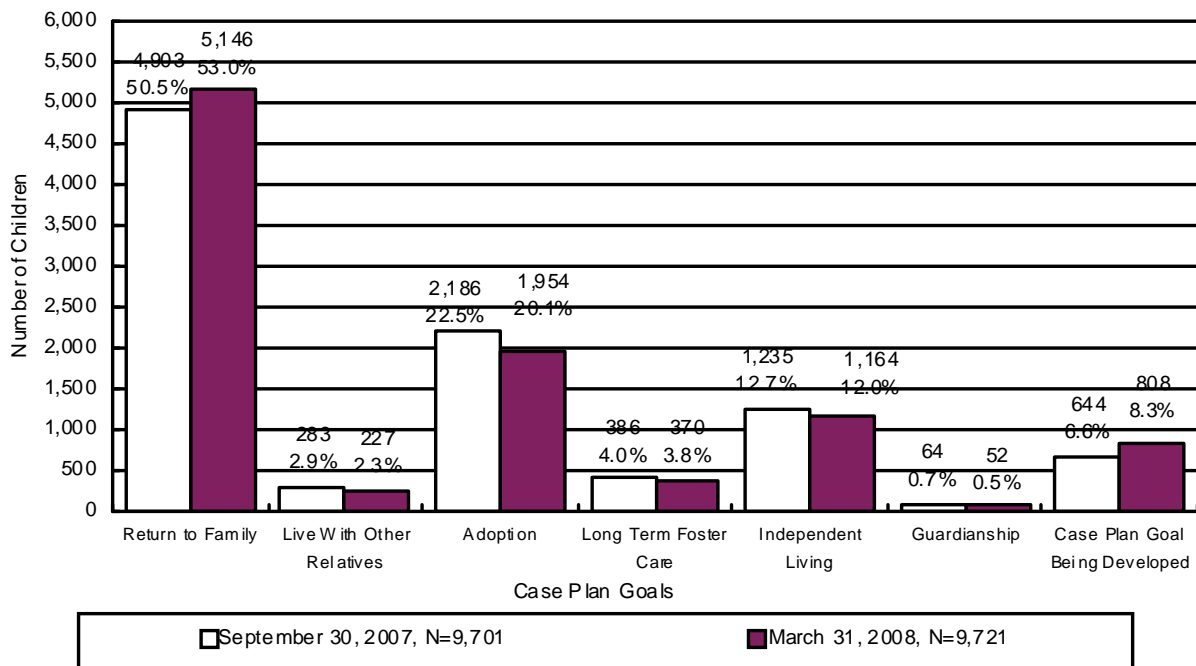
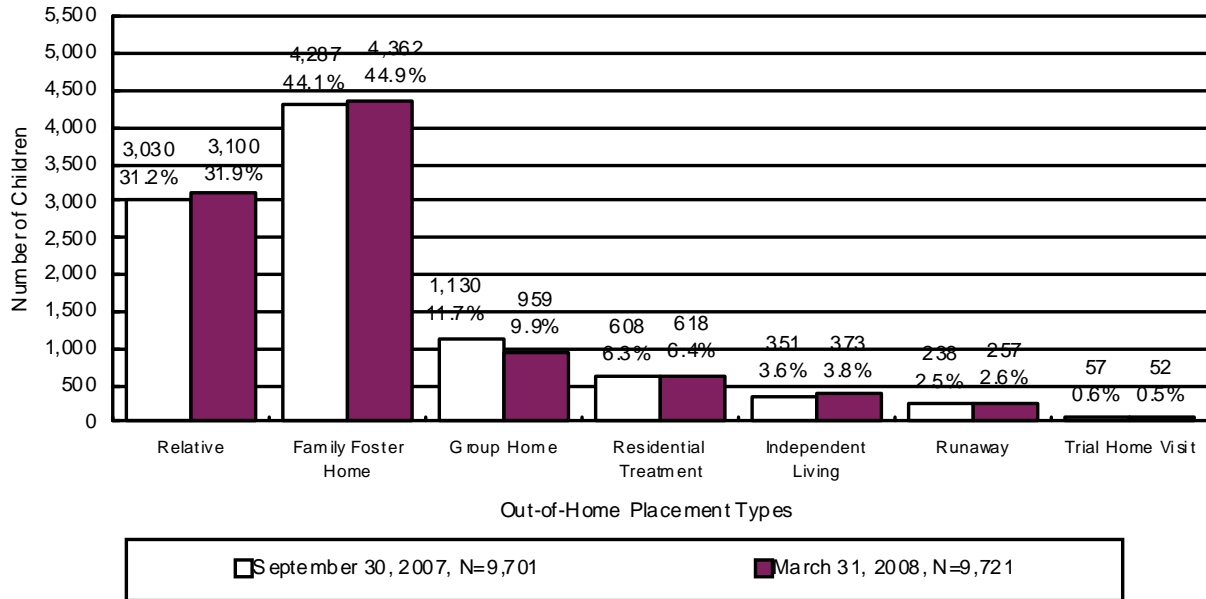


CHART 26
THE NUMBER OF CHILDREN IN OUT-OF-HOME CARE BY PLACEMENT TYPE



**TABLE 33
THE NUMBER OF CHILDREN IN OUT-OF-HOME CARE BY PLACEMENT TYPE AND AGE**

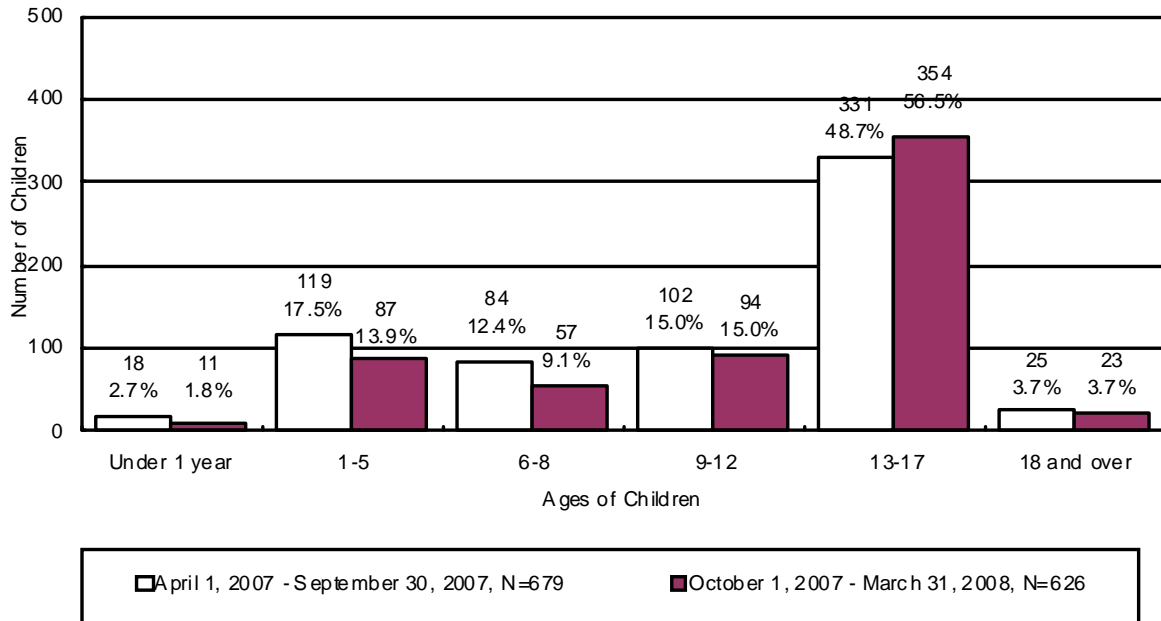
| | RELATIVE | FAMILY FOSTER | GROUP HOME | RESIDENTIAL TREATMENT ⁶ | INDEPENDENT LIVING | RUNAWAY ⁷ | TRIAL HOME VISIT | TOTAL | % OF TOTAL |
|---------------------|----------|---------------|------------|------------------------------------|--------------------|----------------------|------------------|--------|------------|
| UNDER 1 | 239 | 425 | 4 | 10 | 0 | 1 | 2 | 681 | 7.0% |
| 1 | 347 | 485 | 7 | 7 | 0 | 2 | 6 | 854 | 8.8% |
| 2 | 288 | 353 | 2 | 8 | 0 | 0 | 6 | 657 | 6.8% |
| 3 | 277 | 293 | 1 | 7 | 0 | 1 | 6 | 585 | 6.0% |
| 4 | 233 | 257 | 5 | 5 | 0 | 0 | 2 | 502 | 5.2% |
| 5 | 219 | 236 | 3 | 5 | 0 | 2 | 2 | 467 | 4.8% |
| 6 | 182 | 283 | 5 | 7 | 0 | 0 | 0 | 477 | 4.9% |
| 7 | 176 | 221 | 7 | 6 | 0 | 0 | 2 | 412 | 4.2% |
| 8 | 146 | 225 | 16 | 9 | 0 | 1 | 2 | 399 | 4.1% |
| 9 | 155 | 194 | 19 | 12 | 0 | 0 | 1 | 381 | 3.9% |
| 10 | 127 | 179 | 29 | 7 | 0 | 1 | 2 | 345 | 3.5% |
| 11 | 102 | 175 | 40 | 14 | 0 | 0 | 2 | 333 | 3.4% |
| 12 | 101 | 138 | 48 | 22 | 0 | 1 | 2 | 312 | 3.2% |
| 13 | 94 | 151 | 83 | 43 | 0 | 4 | 2 | 377 | 3.9% |
| 14 | 108 | 151 | 114 | 64 | 0 | 15 | 1 | 453 | 4.7% |
| 15 | 90 | 166 | 142 | 111 | 0 | 47 | 7 | 563 | 5.8% |
| 16 | 99 | 172 | 193 | 109 | 0 | 65 | 4 | 642 | 6.6% |
| 17 | 100 | 197 | 202 | 130 | 17 | 99 | 3 | 748 | 7.7% |
| 18 AND OLDER | 17 | 61 | 39 | 42 | 356 | 18 | 0 | 533 | 5.5% |
| TOTAL | 3,100 | 4,362 | 959 | 618 | 373 | 257 | 52 | 9,721 | 100.0% |
| % OF TOTAL | 31.9% | 44.9% | 9.9% | 6.4% | 3.8% | 2.6% | 0.5% | 100.0% | |

⁶ This category includes shelter, detention, and hospital placement types.

⁷ Of the children age twelve or less on runaway status, all were last reported to be with their parents. Police reports have been filed but the families have not been located.

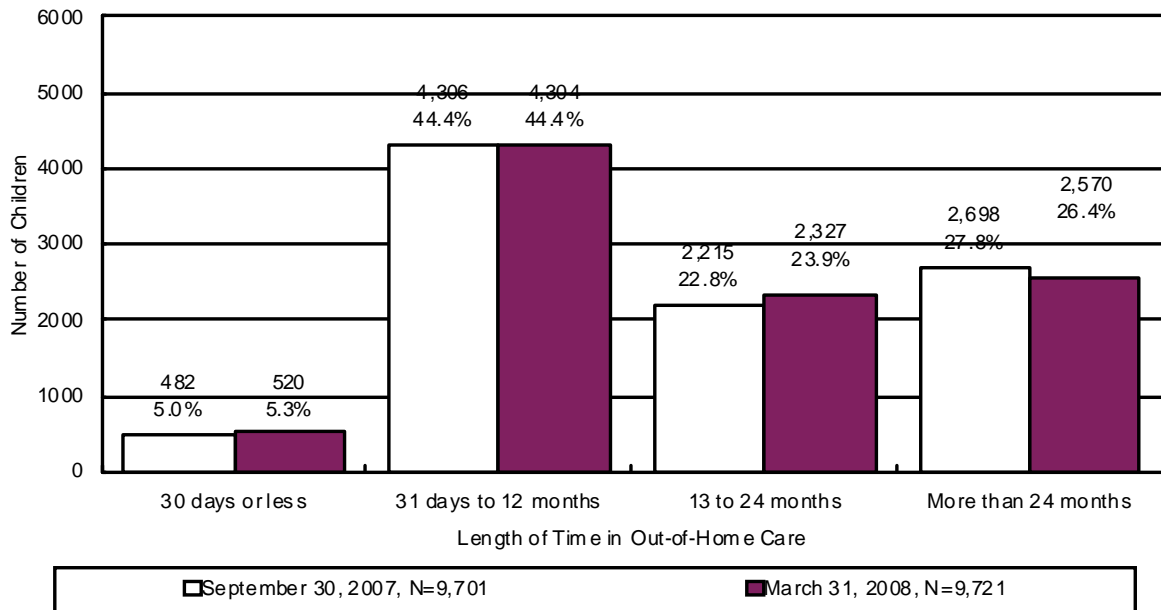
During the reporting period 626 children remained in a shelter or receiving home for more than 21 consecutive days. Chart 27 displays children in shelter greater than 21 days for the period of October 1, 2007 through March 31, 2008 and shows that 528 or 84.3 percent of the children were six years of age or older. In addition, 11 or 1.8 percent of the children were under one year old.

CHART 27
NUMBER AND PERCENTAGE OF CHILDREN IN SHELTER OR RECEIVING HOMES FOR MORE THAN 21 CONSECUTIVE DAYS BY AGE OF CHILD⁸



⁸ The chart displays children who spent more than 21 days in shelter during the period. This number differs from the other out-of-home charts as they display children in out-of-home care on the last day of the reporting period.

CHART 28
THE NUMBER OF CHILDREN IN OUT-OF-HOME CARE BY LENGTH OF TIME IN CARE



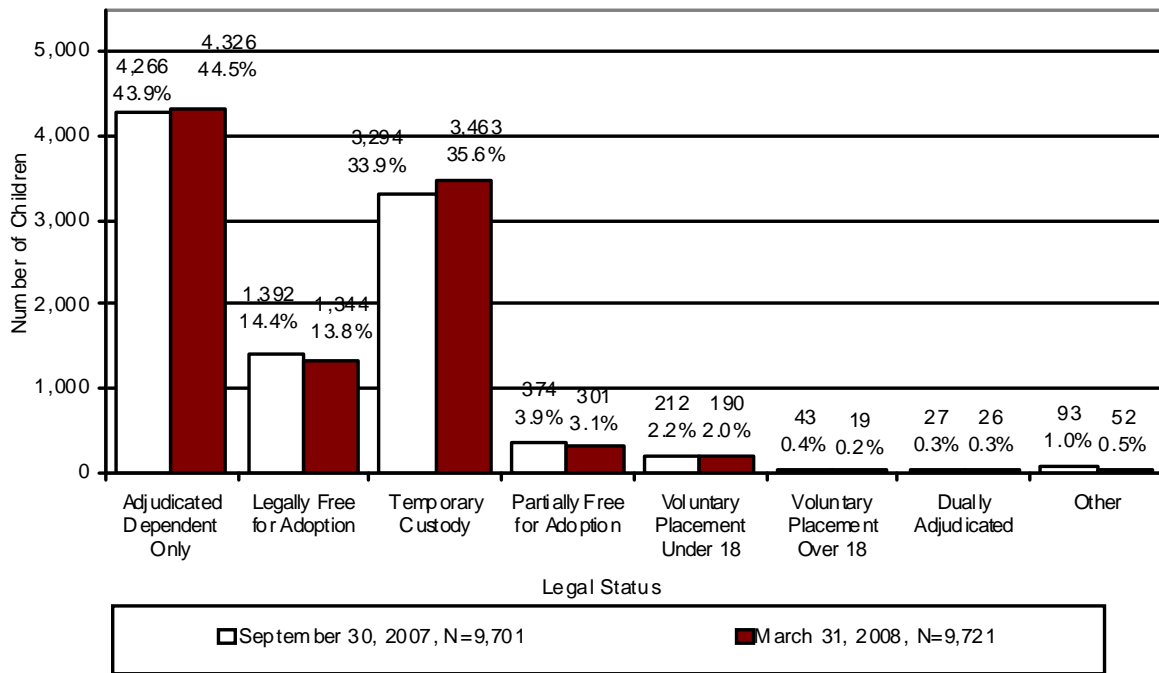
For the children in out-of-home care on March 31, 2008 the average number of placements was 3.1, the median number of placements was 2.0, and the range for the number of placements was 1 to 45 placements during their current removal episode.

TABLE 34
PLACEMENT INFORMATION FOR CHILDREN IN OUT-OF-HOME CARE ON March 31, 2008

| | Placements |
|----------------------|-----------------|
| Average | 3.1 |
| Median | 2.0 |
| Range Minimum | 1 |
| Range Maximum | 45 ⁹ |

⁹ Some children are so damaged by the severity of the abuse they have suffered that they become unable to form meaningful relationships or to respond to services. These children tend to go through multiple placements with numerous individuals and agencies.

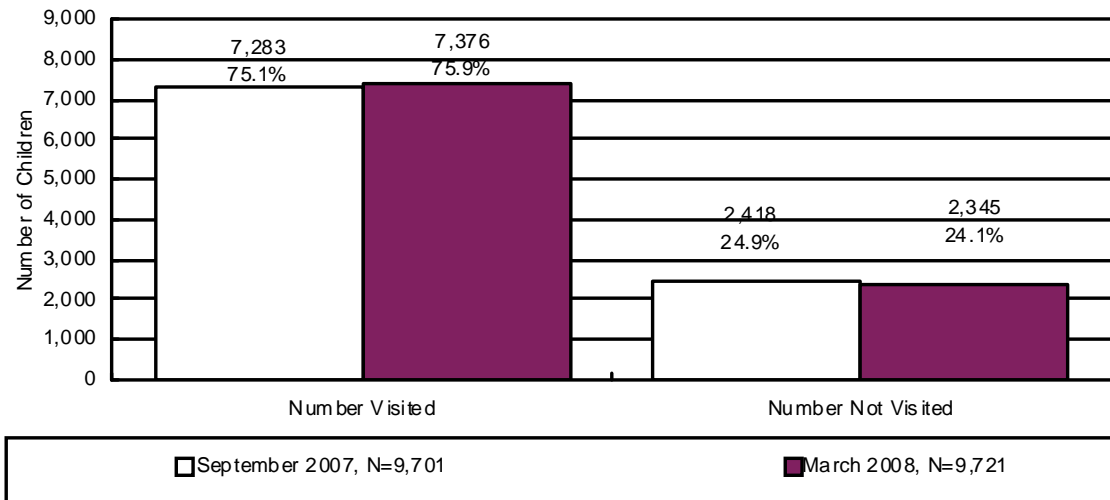
**CHART 29
CHILDREN IN OUT-OF-HOME CARE BY LEGAL STATUS**



At the end of the reporting period there were 9,721 children in out-of-home care who required visitation. Of these children, visitation was accurately documented in the automated system for 7,376 children. As displayed in Chart 30, during this reporting period, the percent of children receiving required visits by their CPS specialists increased by 0.8 percent to 75.9 percent.

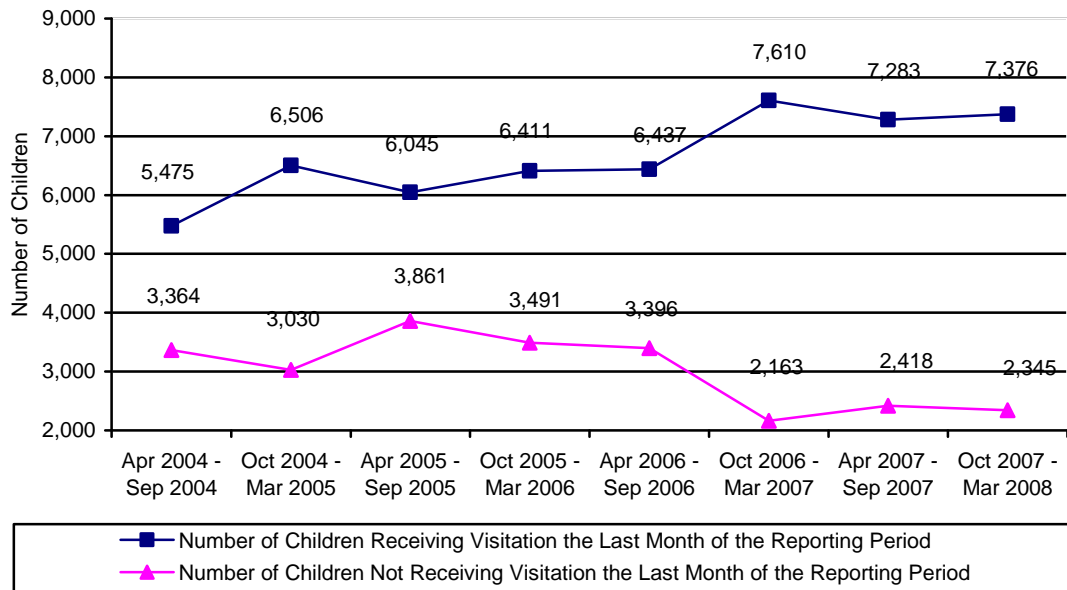
The required child visitation is performed monthly by DES case managers, contracted case managers, and/or other professionals as approved by a supervisor or as established by policy. The Department has verified that more children received the required visitation than is indicated in Chart 30. This information is clearly documented in the automated case notes. However, the Department is unable to compile and tabulate data based solely upon case note text. The Department continues to issue instructions to all direct service staff regarding the system requirements for capturing all visitations. A child was deemed to have received the required visitation if the child received the visitation during the last month of the reporting period.

CHART 30
THE NUMBER AND PERCENTAGE OF CHILDREN WHO RECEIVED THE REQUIRED VISITATION



According to Administration for Children, Youth and Families policy, case managers shall have face-to-face contact with all parents at least once a month, including any alleged parents and parents residing outside of the child’s home where the case plan goal is family reunification or remain with family. During the reporting period, there were 1,645 parents who had a child with the case plan goal of return home. Of those parents requiring visitation, 1,025 or 62.3 percent received the required visitation. The 62.3 percent visitation rate does not reflect attempted visitation where contact did not take place.

CHART 31
NUMBER OF CHILDREN RECEIVING AND NOT RECEIVING VISITATION BY REPORTING PERIOD



FOSTER HOMES

As of March 31, 2008, there were 3,592 licensed foster homes with 6,283 spaces available for Administration for Children, Youth and Families placements. Licensed foster homes include family foster homes, professional family foster homes, respite foster homes, receiving foster homes, and developmentally disabled homes with DCYF children placed in them.

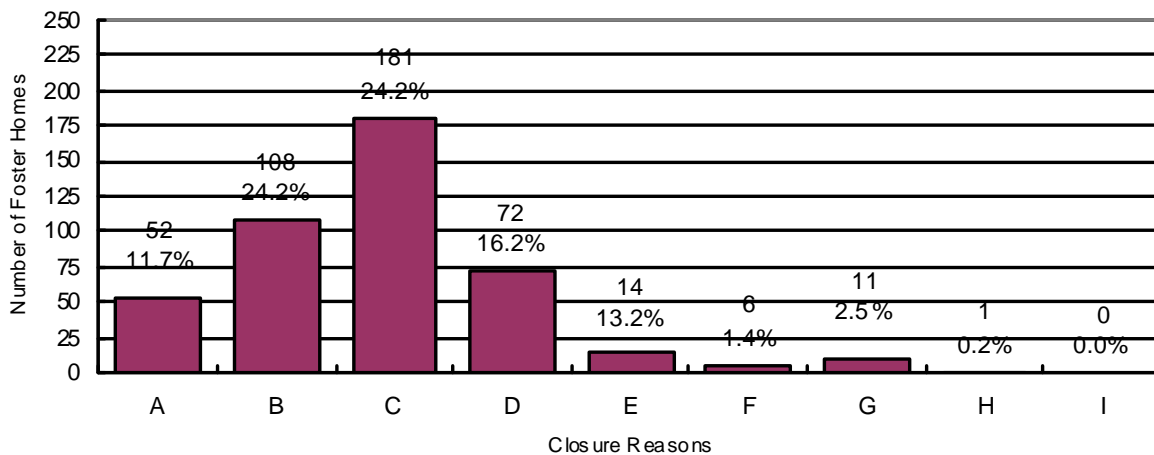
Foster home licenses specify the age range, gender and maximum number of children that can be placed in a home. Foster parents, in consultation with the licensing worker, decide the type of physical, behavioral, and psychological needs of children they can effectively parent based upon their own skill level, experiences, and desires.

As of March 31, 2008, there were 2,108 unused spaces within these foster homes. Of the unused spaces, a match between the available spaces and children’s needs was not possible.

During the reporting period, 794 new homes were licensed to provide foster care and 445 homes left the system. This compares to 435 new homes being licensed and 100 homes leaving the system for the period covering April 2007 through September 2007.

The chart below gives the reasons for foster home closures for the period of October 1, 2007 through March 31, 2008.

**CHART 32
REASON FOR FOSTER HOME CLOSURE FOR THE PERIOD OF
OCTOBER 1, 2007 THROUGH MARCH 31, 2008**



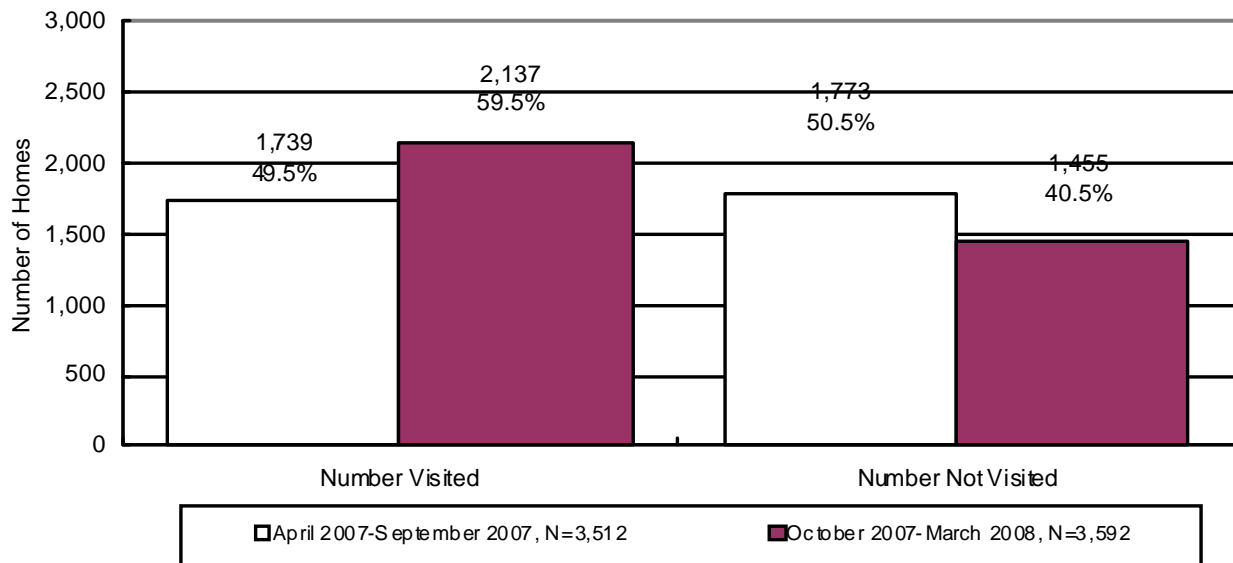
N=445

- A = Personal or Family Issues or Problems**
- B = Other or Foster Parent Did Not State Reason**
- C = Non-Compliance with Licensing Requirements**
- D = Adoption of Foster Child**
- E = Family Relocation**
- F = Child Left Care**
- G = Philosophical Disagreement**
- H = Behavior of Child**

I = Transfer to Division of Developmental Disabilities

During the reporting period, there were 3,592 foster homes that required visitation. Of the 3,592 foster homes requiring visitation, 2,137 foster homes received their required visitation. This compares to 1,739 or 49.5 percent of the foster homes that received the required visitation for the period April 2007 through September 2007. The Department believes that more foster homes received the required visitation than is indicated in the chart below. The underreporting of foster home visitation is attributable to the lack of automation being used in reporting the foster home visitation process. The Department recognizes this as a problem and is working to correct this issue.

**CHART 33
THE NUMBER AND PERCENTAGE OF FOSTER HOMES WHO RECEIVED THE
REQUIRED VISITATION***



*Required visitations to foster homes, for license monitoring purposes, are performed by licensing case managers.

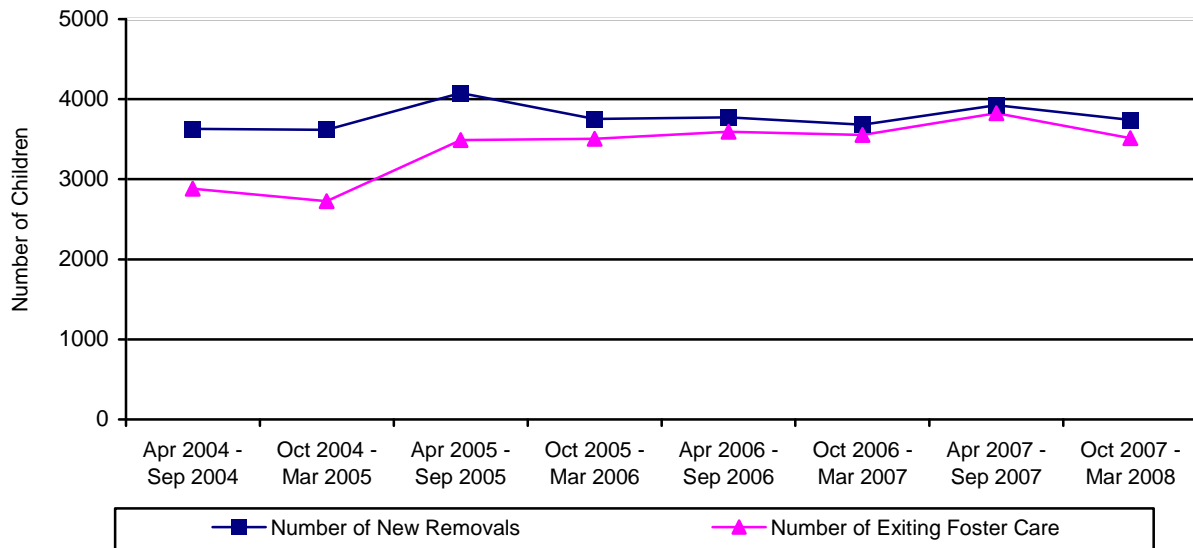
CHILDREN EXITING OUT-OF HOME CARE

During the reporting period, 3,512 children left the custody of the Department. This compares to 3,824 children exiting care during the prior reporting period. The comparison between the two reporting periods shows that 8.2 percent fewer children left care this reporting period for a decrease of 312 children exiting care.

**TABLE 35
CHILDREN EXITING OUT-OF-HOME CARE BY PERIOD**

| REPORTING PERIOD | NUMBER OF CHILDREN DISCHARGED | % CHANGE OVER PRIOR PERIOD |
|-----------------------------|-------------------------------|----------------------------|
| APRIL 2004 – SEPTEMBER 2004 | 2,883 | +8.6% |
| OCTOBER 2004 – MARCH 2005 | 2,726 | -5.4% |
| APRIL 2005 – SEPTEMBER 2005 | 3,488 | +28.0% |
| OCTOBER 2005 – MARCH 2006 | 3,506 | +0.5% |
| APRIL 2006 – SEPTEMBER 2006 | 3,595 | +2.5% |
| OCTOBER 2006 – MARCH 2007 | 3,553 | -1.2% |
| APRIL 2007 – SEPTEMBER 2007 | 3,824 | +7.6% |
| OCTOBER 2007 – MARCH 2008 | 3,512 | -8.2 |

**CHART 34
CHILDREN ENTERING AND EXITING OUT-OF-HOME CARE BY REPORTING PERIOD**



The following nine tables depict the children who exited out-of-home care by the reason for leaving care. The tables display the following information: reasons the child left custody, their age, their ethnicity, the number of placements each child had, and the length of time in out-of-home care.

**TABLE 36
TOTAL NUMBER OF CHILDREN LEAVING DES CUSTODY FOR THE END OF THE
REPORTING PERIOD ENDING ON MARCH 31, 2008**

| By Age | Number | Percentage |
|----------------------------------|---------------|-------------------|
| Under 1 | 225 | 6.4% |
| Ages 1 – 5 | 1,250 | 35.5% |
| Ages 6 – 8 | 462 | 13.2% |
| Ages 9 – 12 | 547 | 15.6% |
| Ages 13 – 17 | 740 | 21.1% |
| 18 and Over | 288 | 8.2% |
| Total | 3,512 | 100.0% |
| | | |
| Ethnicity | Number | Percentage |
| Caucasian | 1,443 | 41.0% |
| Hispanic | 1,194 | 34.0% |
| African American | 452 | 12.9% |
| American Indian | 278 | 7.9% |
| Asian | 34 | 1.0% |
| Other | 111 | 3.2% |
| Total | 3,512 | 100.0% |
| | | |
| By Number of Placements | Number | Percentage |
| One | 1,834 | 52.3% |
| Two | 737 | 21.0% |
| Three | 393 | 11.2% |
| Four | 212 | 6.0% |
| Five | 103 | 2.9% |
| More than Five | 233 | 6.6% |
| Total | 3,512 | 100.0% |
| | | |
| By Length of Time in Care | Number | Percentage |
| Less than 30 Days | 952 | 27.1% |
| 31 Days to 12 Months | 954 | 27.2% |
| 13 to 24 Months | 786 | 22.4% |
| More than 24 Months | 820 | 23.3% |
| Total | 3,512 | 100.0% |

| | Average | Median |
|----------------------------------|----------------|---------------|
| By Age | 8.7 | 7.8 |
| By Number of Placements | 2.4 | 1.0 |
| By Months of Time in Care | 15.4 | 10.7 |

**TABLE 37
NUMBER AND PERCENTAGE OF CHILDREN LEAVING DES CUSTODY
FOR REASON OF “REUNIFICATION WITH PARENTS OR PRIMARY CARETAKER” FOR
THE REPORTING PERIOD ENDING MARCH 31, 2008**

| By Age | Number | Percentage |
|----------------------------------|---------------|-------------------|
| Under 1 | 188 | 10.4% |
| Ages 1 - 5 | 604 | 33.2% |
| Ages 6 – 8 | 246 | 13.6% |
| Ages 9 - 12 | 313 | 17.3% |
| Ages 13 - 17 | 459 | 25.3% |
| 18 and Over | 4 | 0.2% |
| Total | 1,814 | 100.0% |
| | | |
| Ethnicity | Number | Percentage |
| Caucasian | 751 | 41.4% |
| Hispanic | 593 | 32.6% |
| African American | 246 | 13.6% |
| American Indian | 131 | 7.2% |
| Asian | 21 | 1.2% |
| Other | 72 | 4.0% |
| Total | 1,814 | 100.0% |
| | | |
| By Number of Placements | Number | Percentage |
| One | 1,205 | 66.3% |
| Two | 355 | 19.6% |
| Three | 136 | 7.5% |
| Four | 61 | 3.4% |
| Five | 23 | 1.3% |
| More than Five | 34 | 1.9% |
| Total | 1,814 | 100.0% |
| | | |
| By Length of Time in Care | Number | Percentage |
| Less than 30 Days | 781 | 43.0% |
| 31 Days to 12 Months | 677 | 37.3% |
| 13 to 24 Months | 264 | 14.6% |
| More than 24 Months | 92 | 5.1% |
| Total | 1,814 | 100.0% |

| | Average | Median |
|----------------------------------|----------------|---------------|
| By Age | 8.0 | 7.3 |
| By Number of Placements | 1.6 | 1.0 |
| By Months of Time in Care | 6.6 | 2.5 |

**TABLE 38
NUMBER AND PERCENTAGE OF CHILDREN LEAVING DES CUSTODY
FOR REASON OF "LIVING WITH OTHER RELATIVES" FOR THE REPORTING PERIOD
ENDING MARCH 31, 2008**

| By Age | Number | Percentage |
|----------------------------------|---------------|-------------------|
| Under 1 | 9 | 13.4% |
| Ages 1 - 5 | 23 | 34.4% |
| Ages 6 – 8 | 7 | 10.4% |
| Ages 9 - 12 | 15 | 22.4% |
| Ages 13 - 17 | 12 | 17.9% |
| 18 and Over | 1 | 1.5% |
| Total | 67 | 100.0% |
| | | |
| Ethnicity | Number | Percentage |
| Caucasian | 27 | 40.3% |
| Hispanic | 20 | 29.9% |
| African American | 9 | 13.4% |
| American Indian | 8 | 11.9% |
| Asian | 1 | 1.5% |
| Other | 2 | 3.0% |
| Total | 67 | 100.0% |
| | | |
| By Number of Placements | Number | Percentage |
| One | 58 | 86.5% |
| Two | 6 | 9.0% |
| Three | 2 | 3.0% |
| Four | 1 | 1.5% |
| Five | 0 | 0.0% |
| More than Five | 0 | 0.0% |
| Total | 67 | 100.0% |
| | | |
| By Length of Time in Care | Number | Percentage |
| Less than 30 Days | 52 | 77.6% |
| 31 Days to 12 Months | 13 | 19.4% |
| 13 to 24 Months | 0 | 0.0% |
| More than 24 Months | 2 | 3.0% |
| Total | 67 | 100.0% |

| | Average | Median |
|----------------------------------|----------------|---------------|
| By Age | 7.6 | 7.5 |
| By Number of Placements | 1.2 | 1.0 |
| By Months of Time in Care | 1.8 | 0.1 |

**TABLE 39
NUMBER AND PERCENTAGE OF CHILDREN LEAVING DES
CUSTODY FOR REASON OF "ADOPTION" FOR THE REPORTING PERIOD
ENDING MARCH 31, 2008**

| By Age | Number | Percentage |
|----------------------------------|---------------|-------------------|
| Under 1 | 3 | 0.4% |
| Ages 1 - 5 | 443 | 58.0% |
| Ages 6 – 8 | 138 | 18.0% |
| Ages 9 - 12 | 133 | 17.4% |
| Ages 13 - 17 | 47 | 6.1% |
| 18 and Over | 1 | 0.1% |
| Total | 765 | 100.0% |
| | | |
| Ethnicity | Number | Percentage |
| Caucasian | 318 | 41.7% |
| Hispanic | 287 | 37.5% |
| African American | 102 | 13.3% |
| American Indian | 42 | 5.5% |
| Asian | 8 | 1.0% |
| Other | 8 | 1.0% |
| Total | 765 | 100.0% |
| | | |
| By Number of Placements | Number | Percentage |
| One | 227 | 29.7% |
| Two | 215 | 28.1% |
| Three | 160 | 20.9% |
| Four | 79 | 10.3% |
| Five | 40 | 5.2% |
| More than Five | 44 | 5.8% |
| Total | 765 | 100.0% |
| | | |
| By Length of Time in Care | Number | Percentage |
| Less than 30 Days | 0 | 0.0% |
| 31 Days to 12 Months | 6 | 0.8% |
| 13 to 24 Months | 272 | 35.6% |
| More than 24 Months | 487 | 63.6% |
| Total | 765 | 100.0% |

| | Average | Median |
|----------------------------------|----------------|---------------|
| By Age | 6.0 | 4.9 |
| By Number of Placements | 2.6 | 2.0 |
| By Months of Time in Care | 29.7 | 27.5 |

TABLE 40
NUMBER AND PERCENTAGE OF CHILDREN LEAVING DES CUSTODY
FOR REASON OF “GUARDIANSHIP” FOR THE REPORTING PERIOD
ENDING MARCH 31, 2008

| By Age | Number | Percentage |
|----------------------------------|---------------|-------------------|
| Under 1 | 8 | 2.2% |
| Ages 1 - 5 | 125 | 34.2% |
| Ages 6 – 8 | 54 | 14.8% |
| Ages 9 - 12 | 69 | 18.9% |
| Ages 13 - 17 | 109 | 29.9% |
| 18 and Over | 0 | 0.0% |
| Total | 365 | 100.0% |
| | | |
| Ethnicity | Number | Percentage |
| Caucasian | 134 | 36.7% |
| Hispanic | 132 | 36.2% |
| African American | 35 | 9.6% |
| American Indian | 47 | 12.9% |
| Asian | 3 | 0.8% |
| Other | 14 | 3.8% |
| Total | 365 | 100.0% |
| | | |
| By Number of Placements | Number | Percentage |
| One | 181 | 49.6% |
| Two | 92 | 25.2% |
| Three | 38 | 10.4% |
| Four | 30 | 8.2% |
| Five | 16 | 4.4% |
| More than Five | 8 | 2.2% |
| Total | 365 | 100.0% |
| | | |
| By Length of Time in Care | Number | Percentage |
| Less than 30 Days | 39 | 10.7% |
| 31 Days to 12 Months | 120 | 32.9% |
| 13 to 24 Months | 150 | 41.1% |
| More than 24 Months | 56 | 15.3% |
| Total | 365 | 100.0% |

| | Average | Median |
|----------------------------------|----------------|---------------|
| By Age | 9.0 | 8.9 |
| By Number of Placements | 2.1 | 2.0 |
| By Months of Time in Care | 15.4 | 14.4 |

**TABLE 41
NUMBER AND PERCENTAGE OF CHILDREN LEAVING DES CUSTODY
FOR REASONS OF "REACHING AGE OF MAJORITY" FOR THE REPORTING PERIOD
ENDING MARCH 31, 2008**

| By Age | Number | Percentage |
|----------------------------------|---------------|-------------------|
| Under 1 | 0 | 0.0% |
| Ages 1 - 5 | 0 | 0.0% |
| Ages 6 - 8 | 0 | 0.0% |
| Ages 9 - 12 | 0 | 0.0% |
| Ages 13 - 17 | 1 | 0.4% |
| 18 and Over | 275 | 99.6% |
| Total | 276 | 100.0% |
| | | |
| Ethnicity | Number | Percentage |
| Caucasian | 134 | 48.5% |
| Hispanic | 79 | 28.6% |
| African American | 33 | 12.0% |
| American Indian | 25 | 9.1% |
| Asian | 1 | 0.4% |
| Other | 4 | 1.4% |
| Total | 276 | 100.0% |
| | | |
| By Number of Placements | Number | Percentage |
| One | 31 | 11.2% |
| Two | 26 | 9.4% |
| Three | 38 | 13.8% |
| Four | 32 | 11.6% |
| Five | 18 | 6.5% |
| More than Five | 131 | 47.5% |
| Total | 276 | 100.0% |
| | | |
| By Length of Time in Care | Number | Percentage |
| Less than 30 Days | 4 | 1.4% |
| 31 Days to 12 Months | 50 | 18.1% |
| 13 to 24 Months | 63 | 22.8% |
| More than 24 Months | 159 | 57.7% |
| Total | 276 | 100.0% |

| | Average | Median |
|----------------------------------|----------------|---------------|
| By Age | 18.6 | 18.0 |
| By Number of Placements | 7.3 | 5.0 |
| By Months of Time in Care | 40.7 | 29.9 |

TABLE 42
NUMBER AND PERCENTAGE OF CHILDREN LEAVING DES CUSTODY
FOR REASON OF “TRANSFER TO ANOTHER AGENCY” FOR THE REPORTING PERIOD
ENDING MARCH 31, 2008

| By Age | Number | Percentage |
|----------------------------------|---------------|-------------------|
| Under 1 | 16 | 12.3% |
| Ages 1 – 5 | 52 | 40.0% |
| Ages 6 – 8 | 17 | 13.1% |
| Ages 9 – 12 | 15 | 11.5% |
| Ages 13 – 17 | 27 | 20.8% |
| 18 and Over | 3 | 2.3% |
| Total | 130 | 100.0% |
| | | |
| Ethnicity | Number | Percentage |
| Caucasian | 54 | 41.5% |
| Hispanic | 37 | 28.5% |
| African American | 14 | 10.8% |
| American Indian | 20 | 15.4% |
| Asian | 0 | 0.0% |
| Other | 5 | 3.8% |
| Total | 130 | 100.0% |
| | | |
| By Number of Placements | Number | Percentage |
| One | 66 | 50.8% |
| Two | 33 | 25.4% |
| Three | 16 | 12.3% |
| Four | 6 | 4.6% |
| Five | 3 | 2.3% |
| More than Five | 6 | 4.6% |
| Total | 130 | 100.0% |
| | | |
| By Length of Time in Care | Number | Percentage |
| Less than 30 Days | 23 | 17.7% |
| 31 Days to 12 Months | 67 | 51.5% |
| 13 to 24 Months | 24 | 18.5% |
| More than 24 Months | 16 | 12.3% |
| Total | 130 | 100.0% |

| | Average | Median |
|----------------------------------|----------------|---------------|
| By Age | 7.1 | 5.7 |
| By Number of Placements | 2.1 | 1.0 |
| By Months of Time in Care | 12.6 | 7.0 |

**TABLE 43
NUMBER AND PERCENTAGE OF CHILDREN LEAVING DES CUSTODY
FOR REASON OF "RUNAWAY" FOR THE REPORTING PERIOD
ENDING MARCH 31, 2008**

| By Age | Number | Percentage |
|----------------------------------|---------------|-------------------|
| Under 1 | 0 | 0.0% |
| Ages 1 – 5 | 1 | 1.1% |
| Ages 6 – 8 | 0 | 0.0% |
| Ages 9 – 12 | 1 | 1.1% |
| Ages 13 – 17 | 85 | 93.4% |
| 18 and Over | 4 | 4.4% |
| Total | 91 | 100.0% |
| | | |
| Ethnicity | Number | Percentage |
| Caucasian | 25 | 27.5% |
| Hispanic | 44 | 48.3% |
| African American | 13 | 14.3% |
| American Indian | 4 | 4.4% |
| Asian | 0 | 0.0% |
| Other | 5 | 5.5% |
| Total | 91 | 100.0% |
| | | |
| By Number of Placements | Number | Percentage |
| One | 62 | 68.1% |
| Two | 10 | 11.0% |
| Three | 3 | 3.3% |
| Four | 3 | 3.3% |
| Five | 3 | 3.3% |
| More than Five | 10 | 11.0% |
| Total | 91 | 100.0% |
| | | |
| By Length of Time in Care | Number | Percentage |
| Less than 30 Days | 53 | 58.2% |
| 31 Days to 12 Months | 18 | 19.8% |
| 13 to 24 Months | 12 | 13.2% |
| More than 24 Months | 8 | 8.8% |
| Total | 91 | 100.0% |

| | Average | Median |
|----------------------------------|----------------|---------------|
| By Age | 16.3 | 16.6 |
| By Number of Placements | 2.3 | 1.0 |
| By Months of Time in Care | 6.9 | 0.2 |

TABLE 44
NUMBER AND PERCENTAGE OF CHILDREN LEAVING DES CUSTODY
FOR REASON OF “DEATH OF CHILD” FOR THE REPORTING PERIOD ENDING
MARCH 31, 2008

| By Age | Number | Percentage |
|----------------------------------|---------------|-------------------|
| Under 1 | 1 | 25.0% |
| Ages 1 - 5 | 2 | 50.0% |
| Ages 6 – 8 | 0 | 0.0% |
| Ages 9 - 12 | 1 | 25.0% |
| Ages 13 - 17 | 0 | 0.0% |
| 18 and Over | 0 | 0.0% |
| Total | 4 | 100.0% |
| | | |
| Ethnicity | Number | Percentage |
| Caucasian | 0 | 0.0% |
| Hispanic | 2 | 50.0% |
| African American | 0 | 0.0% |
| American Indian | 1 | 25.0% |
| Asian | 0 | 0.0% |
| Other | 1 | 25.0% |
| Total | 4 | 100.0% |
| | | |
| By Number of Placements | Number | Percentage |
| One | 4 | 100.0% |
| Two | 0 | 0.0% |
| Three | 0 | 0.0% |
| Four | 0 | 0.0% |
| Five | 0 | 0.0% |
| More than Five | 0 | 0.0% |
| Total | 4 | 100.0% |
| | | |
| By Length of Time in Care | Number | Percentage |
| Less than 30 Days | 0 | 0.0% |
| 31 Days to 12 Months | 3 | 75.0% |
| 13 to 24 Months | 1 | 25.0% |
| More than 24 Months | 0 | 0.0% |
| Total | 4 | 100.0% |

| | Average | Median |
|----------------------------------|----------------|---------------|
| By Age | 3.9 | 2.4 |
| By Number of Placements | 1.0 | 1.0 |
| By Months of Time in Care | 7.7 | 6.5 |

**TABLE 45
CHILDREN EXITING CARE FOR REASON OF DEATH BY CAUSE OF DEATH,
PLACEMENT TYPE AT TIME OF DEATH, AND COUNTY**

| COUNTY | CAUSE OF DEATH | TYPE OF PLACEMENT AT TIME OF DEATH |
|----------|--------------------------------|------------------------------------|
| Maricopa | Pending Autopsy | Family Foster home |
| Maricopa | Pending Autopsy | Family Foster home |
| Maricopa | Pre-existing medical condition | Family Foster home |
| Maricopa | Pre-existing medical condition | Family Foster home |

**TABLE 46
NUMBER OF CHILDREN IN AN OPEN CASE WHO DIED AS A RESULT OF ALLEGED
ABUSE AS CATEGORIZED BY THE CUSTODIAL RELATIONSHIP AND COUNTY FOR THE
PERIOD OCTOBER 1, 2007 THROUGH MARCH 30, 2008**

| COUNTY | BIOLOGICAL PARENT(S) | OTHER FAMILY MEMBER | ADOPTIVE PARENT(S) | FOSTER CARE PARENT(S) | OTHER OUT-OF-HOME CARE PROVIDER | TOTAL | % OF TOTAL |
|------------|----------------------|---------------------|--------------------|-----------------------|---------------------------------|--------|------------|
| APACHE | 0 | 0 | 0 | 0 | 0 | 0 | 0.0% |
| COCHISE | 0 | 0 | 0 | 0 | 0 | 0 | 0.0% |
| COCONINO | 0 | 0 | 0 | 0 | 0 | 0 | 0.0% |
| GILA | 0 | 0 | 0 | 0 | 0 | 0 | 0.0% |
| GRAHAM | 0 | 0 | 0 | 0 | 0 | 0 | 0.0% |
| GREENLEE | 0 | 0 | 0 | 0 | 0 | 0 | 0.0% |
| LA PAZ | 0 | 0 | 0 | 0 | 0 | 0 | 0.0% |
| MARICOPA | 1 | 0 | 0 | 0 | 0 | 1 | 50.0% |
| MOHAVE | 0 | 0 | 0 | 0 | 0 | 0 | 0.0% |
| NAVAJO | 0 | 0 | 0 | 0 | 0 | 0 | 0.0% |
| PIMA | 1 | 0 | 0 | 0 | 0 | 1 | 50.0% |
| PINAL | 0 | 0 | 0 | 0 | 0 | 0 | 0.0% |
| SANTA CRUZ | 0 | 0 | 0 | 0 | 0 | 0 | 0.0% |
| YAVAPAI | 0 | 0 | 0 | 0 | 0 | 0 | 0.0% |
| YUMA | 0 | 0 | 0 | 0 | 0 | 0 | 0.0% |
| STATEWIDE | 2 | 0 | 0 | 0 | 0 | 2 | 100.0% |
| % OF TOTAL | 100.0% | 50.0% | 0.0% | 0.0% | 0.0% | 100.0% | |

There were no children in an open case who died as a result of abuse from a household adult not accounted for in the prior table.

CHILDREN WITH ADOPTIVE CASE PLAN GOALS

Of the 9,721 children in out-of-home care on March 31, 2008, 1,954 or 20.1 percent had a case plan goal of adoption. The majority of those children, 47.6 percent, are in the 1-5 year old age range, followed by 20.3 percent in the 6-8 year old age range, and 19.0 percent in the 9-12 year old age range. The remaining children, 255 or 13.1 percent, fall within the under one or 13 and over age range. The majority of these children are Caucasian (832 or 42.6 percent), Hispanic (717 or 36.7 percent), or African American (260 or 13.3 percent). The remaining 145 children or 7.4 percent are American Indian, Asian or other. Sixty-eight and eight tenths of a percent, or 1,344 of the children free for adoption, are currently placed in their adoptive homes.

**TABLE 47
NUMBER OF CHILDREN WITH A PETITION FOR TERMINATION OF PARENTAL RIGHTS
BY COUNTY FOR THE PERIOD OCTOBER 1, 2007 THROUGH MARCH 31, 2008**

| COUNTY | TERMINATION OF RIGHTS GRANTED | TERMINATION OF RIGHTS DENIED | TERMINATION OF RIGHTS GRANTED IN PART/DENIED IN PART | TERMINATION OF RIGHTS WITHDRAWN | TOTAL | % OF TOTAL |
|------------|-------------------------------------|------------------------------------|--|---------------------------------------|--------|---------------|
| APACHE | 5 | 0 | 0 | 0 | 5 | 1.0% |
| COCHISE | 12 | 0 | 0 | 4 | 16 | 3.1% |
| COCONINO | 1 | 0 | 0 | 0 | 1 | 0.2% |
| GILA | 3 | 0 | 0 | 0 | 3 | 0.6% |
| GRAHAM | 3 | 0 | 0 | 0 | 3 | 0.6% |
| GREENLEE | 0 | 0 | 0 | 0 | 0 | 0.0% |
| LA PAZ | 0 | 0 | 0 | 0 | 0 | 0.0% |
| MARICOPA | 139 | 0 | 0 | 8 | 147 | 28.8% |
| MOHAVE | 25 | 0 | 2 | 0 | 27 | 5.3% |
| NAVAJO | 11 | 0 | 0 | 0 | 11 | 2.2% |
| PIMA | 210 | 0 | 1 | 6 | 217 | 42.4% |
| PINAL | 11 | 0 | 0 | 1 | 12 | 2.4% |
| SANTA CRUZ | 7 | 0 | 0 | 0 | 7 | 1.4% |
| YAVAPAI | 48 | 0 | 0 | 2 | 50 | 9.8% |
| YUMA | 9 | 0 | 0 | 2 | 11 | 2.2% |
| STATEWIDE | 484 | 0 | 3 | 23 | 510 | 100.0% |
| % OF TOTAL | 94.9% | 0.0% | 0.6% | 4.5% | 100.0% | |

The average length of time that a child with a case plan goal of “adoption” has spent in out-of-home care is 2 years, 5 months. There were a total of 1,954 children with case plan goals of adoption during this reporting period. Of this total, 1,744 were placed and 210 were not placed. The population of children with case plan goals of adoption averaged 3.3 placements and had a median placement count of 2.0. Their placement count ranged from 1 to 23.

TABLE 48
PLACEMENT INFORMATION FOR CHILDREN WITH A CASE PLAN GOAL OF ADOPTION

| | Placements |
|----------------------|-------------------|
| Average | 3.3 |
| Median | 2.0 |
| Range Minimum | 1.0 |
| Range Maximum | 23.0 |

CHART 35
THE NUMBER OF CHILDREN WITH A CASE PLAN GOAL OF ADOPTION BY AGE

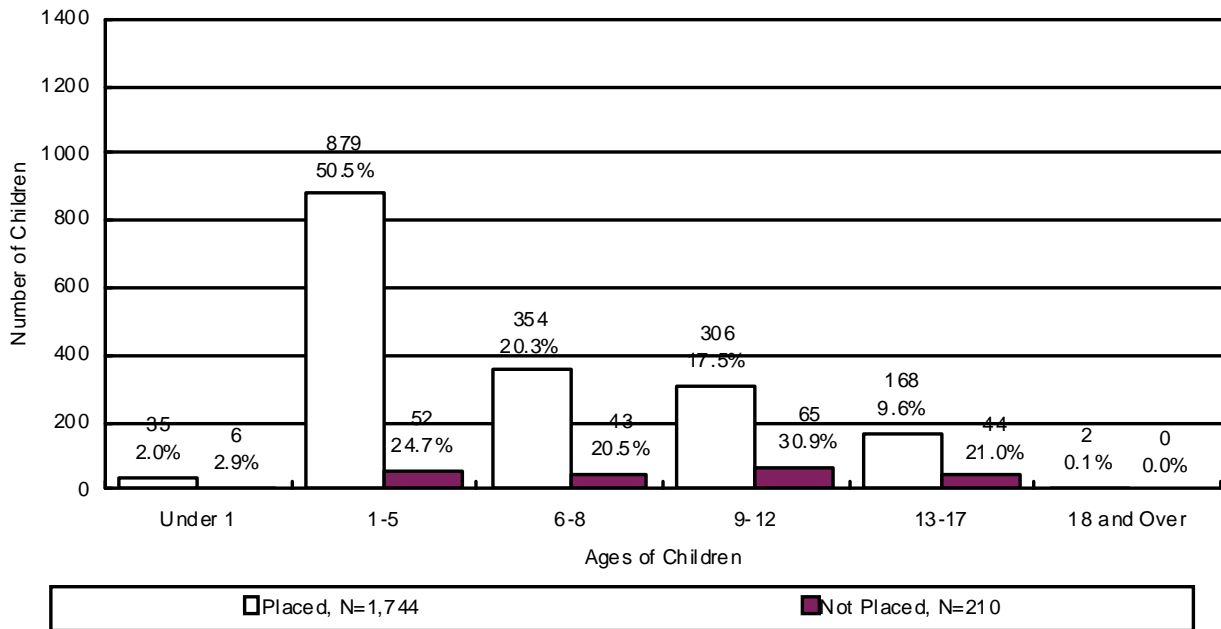


CHART 36
THE NUMBER OF CHILDREN WITH A CASE PLAN GOAL OF ADOPTION BY ETHNICITY

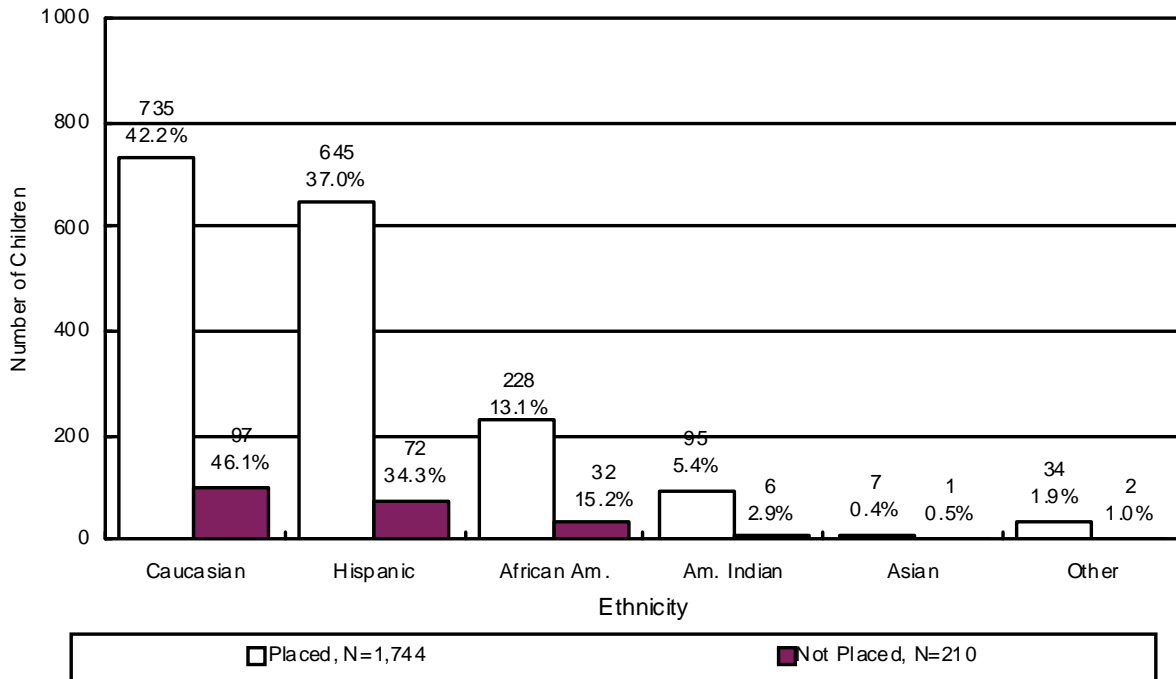
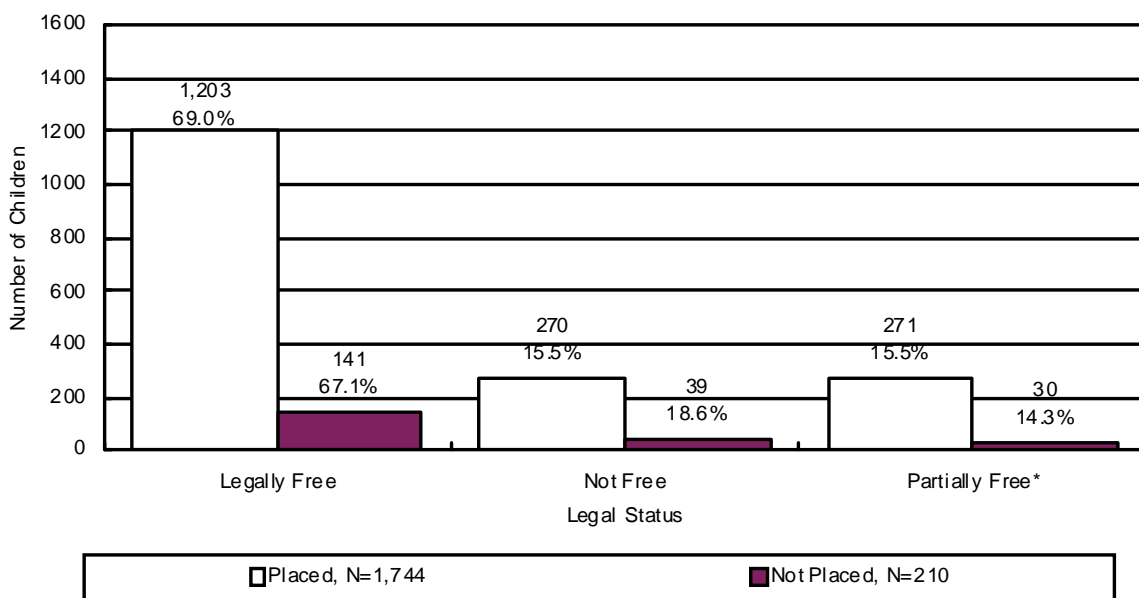
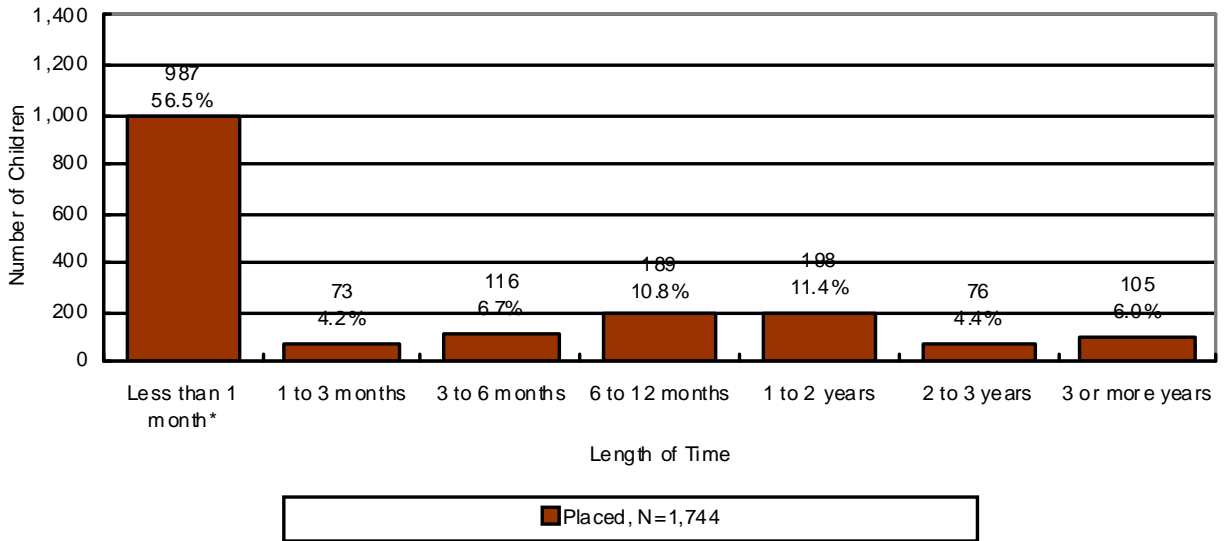


CHART 37
THE NUMBER OF CHILDREN WITH A CASE PLAN GOAL OF ADOPTION BY LEGAL STATUS



*Partially free refers to a situation where only one of the parent’s rights has been severed.

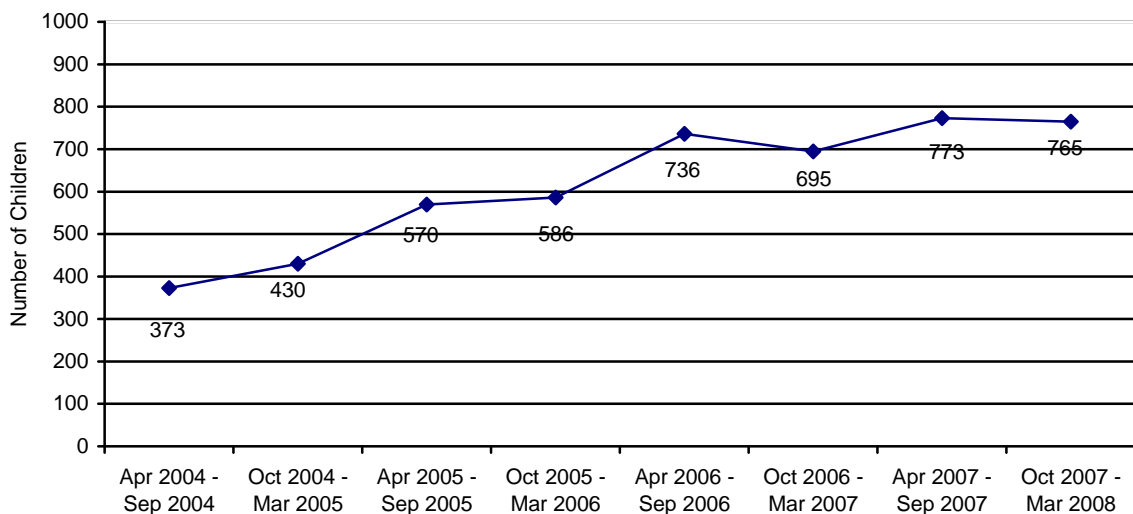
CHART 38
THE NUMBER OF CHILDREN WITH A CASE PLAN GOAL OF ADOPTION BY LENGTH OF TIME FROM CHANGE OF CASE PLAN GOAL OF ADOPTION TO ADOPTIVE PLACEMENT



*About 70 percent of children are adopted by relatives or their foster parents and are already in their prospective adoptive placement at the time the case plan goal changes to adoption.

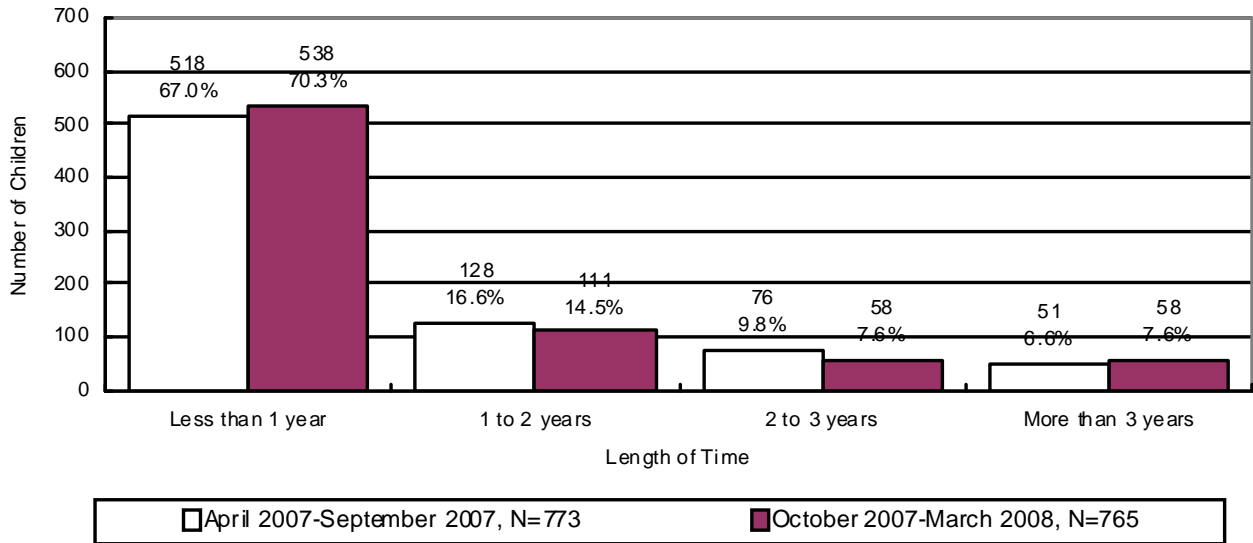
ADOPTIVE SERVICES

CHART 39
THE NUMBER OF CHILDREN WITH A FINALIZED ADOPTION



There were 765 children with a finalized adoption during the reporting period. Chart 40 displays the number of children with a finalized adoption during the reporting period by the average length of time in out-of-home placement before adoptive placement.

CHART 40
THE NUMBER AND PERCENTAGE OF CHILDREN WITH A FINALIZED ADOPTION BY AVERAGE LENGTH OF TIME IN OUT-OF-HOME PLACEMENT BEFORE ADOPTIVE PLACEMENT



The chart below displays the number of children with a finalized adoption by average length of time in adoptive placement before the final order of adoption.

CHART 41
THE NUMBER AND PERCENTAGE OF CHILDREN WITH A FINALIZED ADOPTION BY AVERAGE LENGTH OF TIME IN ADOPTIVE PLACEMENT BEFORE THE FINAL ORDER OF ADOPTION

