



DEPARTMENT OF ECONOMIC SECURITY

*Your Partner For A Stronger Arizona*

Janice K. Brewer  
Governor

Clarence H. Carter  
Director

**MAR 14 2011**

The Honorable Janice K. Brewer  
Governor of Arizona  
1700 West Washington  
Phoenix, Arizona 85007

Dear Governor Brewer:

Pursuant to A.R.S. § 8-526, the Arizona Department of Economic Security (DES) submits the enclosed semi-annual report on child welfare for the period of April 1, 2010 through September 30, 2010. This report provides information relative to reports of child abuse and neglect, investigations, shelter and receiving home services, foster homes, length of care, and adoptions.

We continue to work diligently to improve the quality of services for children and their families. Compiling this report provides us another opportunity to review our work and consider new ways to improve.

If you have any questions, please contact me at (602) 542-5757.

Sincerely,

Clarence H. Carter  
Director

Enclosure

cc: President Russell Pearce, Arizona State Senate  
Speaker Kirk D. Adams, Arizona State House of Representatives  
Senator Linda Gray, Chairman, Senate Public Safety and Human Services Committee  
Representative Cecil P. Ash, Chairman, House Health and Human Services Committee  
Secretary of State Ken Bennett  
GladysAnn Wells, Director, Arizona State Library, Archives, and Public Records  
Beth Kohler Lazare, Policy Advisor for Health and Human Services, Office of the Governor  
Leah Koestner, Assistant Policy Advisor, Office of the Governor  
John Arnold, Director, Governor's Office of Strategic Planning and Budgeting  
Eileen Klein, Chief of Staff, Office of the Governor  
Nicole Davis, Division Chief Council, Child and Family Protection Division, Office of the Attorney General  
Amber O'Dell, Analyst, Senate Public Safety and Human Services Committee  
Ingrid Garvey, Analyst, House Health and Human Services Committee  
Katy Proctor, Policy Advisor, Senate Majority Caucus  
Wendy Baldo, Chief of Staff, Senate Majority Caucus  
Barbara Guenther, Policy Advisor, Senate Democratic Caucus  
Steve Moortel, Policy Advisor, House Majority Caucus  
Elizabeth Nevran, Policy Advisor, House Democratic Caucus

**CHILD WELFARE REPORTING REQUIREMENTS**

**SEMI-ANNUAL REPORT**

**FOR THE PERIOD OF**

**APRIL 1, 2010 THROUGH SEPTEMBER 30, 2010**

**ARIZONA REVISED STATUTES**

**[LAWS 2006, CHAPTER 203]**

**ARIZONA DEPARTMENT OF ECONOMIC SECURITY**

**DIVISION OF CHILDREN, YOUTH AND FAMILIES**

**ADMINISTRATION FOR CHILDREN, YOUTH AND FAMILIES**

**CHILD WELFARE REPORTING REQUIREMENTS**

Arizona Revised Statute § 8-526, as amended by Laws 2006, Chapter 203 requires the Arizona Department of Economic Security (DES) to compile information and produce a semi-annual report for the periods ending on March 31 and September 30 of each year regarding Child Welfare Services, including Child Protective Services (CPS). This report, submitted in satisfaction of that mandate, is for the semi-annual reporting period beginning on April 1, 2010 and ending on September 30, 2010.

**TABLE OF CONTENTS**

(Reporting period: April 1, 2010 through September 30, 2010)

	<u>Page</u>
<b>EXECUTIVE SUMMARY</b> .....	4
<b>SEMI-ANNUAL COMPARISONS</b> .....	7
<b>REPORTS OF CHILD ABUSE AND NEGLECT</b>	
Reports by reporting period and type of child maltreatment – statewide data.....	8
Sample communications to hotline, not meeting definition of report.....	10
Reports received by risk level- statewide data.....	11
Number of reports received by risk level – county specific data.....	11
Number of reports received by maltreatment – statewide data.....	12
Number of reports received by maltreatment – county specific data.....	13
<b>ASSIGNMENT OF INVESTIGATIONS</b>	
Reports assigned for investigation by risk level – statewide data.....	14
Reports assigned for investigation by risk level – county specific data.....	14
Reports assigned for investigation by type of maltreatment – statewide data.....	15
Reports assigned for investigation by type of maltreatment – county specific data.....	16
<b>INVESTIGATIONS OF CHILD ABUSE AND NEGLECT</b>	
Reports not responded to by risk level – county specific data.....	17
Investigations by risk level – investigation still open – statewide data.....	18
Investigations by risk level – investigation still open – county specific data.....	18
Investigations by type of child maltreatment – investigation still open – statewide data...	19
Investigations by type of child maltreatment – investigation still open – county specific data.....	20
Reports where removal occurred – county specific data.....	21
<b>COMPLETED INVESTIGATIONS</b>	
Substantiation rate by reporting period.....	23
Investigations by risk level – proposed substantiated reports – statewide data.....	24
Investigations by risk level – proposed substantiated reports – county specific data.....	24
Investigations by type of child maltreatment – proposed substantiated reports – statewide data.....	25
Investigations by type of child maltreatment – proposed substantiated reports – county specific data.....	26
Investigations by risk level – substantiated reports – statewide data.....	27

**TABLE OF CONTENTS (continued)**  
 (Reporting period: April 1, 2010 through September 30, 2010)

	<u>Page</u>
Investigations by risk level – substantiated reports county specific data.....	27
Investigations by type of child maltreatment – substantiated reports – statewide data...	28
Investigations by type of child maltreatment – substantiated reports – county specific data.....	29
Investigations by risk level – unsubstantiated reports – statewide data.....	30
Investigations by risk level – unsubstantiated reports – county specific data.....	30
Investigations by type of child maltreatment – unsubstantiated reports – statewide data..	31
Investigations by type of child maltreatment – unsubstantiated reports – county specific data.....	32
<b>SAFE HAVEN INFANTS</b>	
Number of Safe Haven infants delivered during reporting period.....	33
<b>CHILDREN ENTERING OUT-OF-HOME CARE</b>	
New entries by county – children under 18 years voluntary placement.....	34
New entries by county.....	35
New entries – statewide data.....	36
<b>CHILDREN IN OUT-OF-HOME CARE</b>	
Children in out-of-home care by reporting period.....	37
Children in group homes ages 0-6.....	38
Children in shelter ages 0-3.....	38
The average length of stay in a shelter placement for children ages 0-3 in a shelter placement on the last day of the reporting period.....	39
All children in care by age and ethnicity.....	39-40
All children in care by case plan goal and placement type.....	40-41
All children in care by placement type and age.....	42
Children in shelter or receiving homes for more than 21 days.....	43
Children in out-of-home care by length of time in care.....	44
Children in out-of-home care by legal status.....	45
Children receiving required visitation.....	46
<b>FOSTER HOME LICENSING, CLOSURES, AND VISITATIONS</b>	
Foster homes licensed.....	47
Foster homes closed and reason for closure.....	47
Child bed spaces available.....	47
Number of foster homes receiving the required visitation.....	48
<b>CHILDREN LEAVING OUT-OF-HOME CARE</b>	
Semi-Annual comparisons of total number leaving care – For all reasons.....	49
Total number leaving care.....	50
Total number leaving care – For reason of reunification with parents.....	51
Total number leaving care – For reason of living with other relatives.....	52
Total number leaving care – For reason of adoption.....	53
Total number leaving care – For reason of guardianship.....	54

**TABLE OF CONTENTS (continued)**  
 (Reporting period: April 1, 2010 through September 30, 2010)

	<u>Page</u>
Total number leaving care – For reason of reaching age of majority.....	55
Total number leaving care – For reason of transfer to another agency.....	56
Total number leaving care – For reason of runaway.....	57
Total number leaving care – For reason of death of child.....	58
Total number leaving care – by cause of death.....	59
Total number for reason of death of child – with alleged abuse.....	59
<b>CHILDREN WITH CASE PLAN GOALS OF ADOPTION</b>	
Number of children with a petition for termination of parental rights.....	60
The placement and number of children with case plan goals of adoption by age.....	61
The placement and number of children with case plan goals of adoption by ethnicity.....	62
The placement and number of children with case plan goals of adoption by legal status..	62
Number of children – length of time from change of case plan goal of adoption to adoptive placement.....	63
<b>ADOPTIVE SERVICES</b>	
Number of children with a finalized adoption by average length of time in out-of-home placement before adoptive placement.....	64
Number of children with a finalized adoption by average length of time in adoptive placement before the final order of adoption.....	64

## Executive Summary

The Arizona Department of Economic Security's Division of Children, Youth and Families (Division) is pleased to publish this semi-annual report for April 2010 through September 2010 in compliance with A.R.S. § 8-526. This report is intended to provide its readers an opportunity to review the Division's progress in implementing systemic improvement strategies as they impact key performance indicators.

The Division has continuously pursued strategies to achieve improved outcomes for children and families. Many of these strategies have been highlighted in previous editions of this report and other Division publications, and have included strengthening of the Division's quality improvement system, increasing staff skill in the application of the Division's integrated child safety assessment and risk assessment tools, and strengthening in-home services to safely avoid removing children from their homes. Current areas of focus and development include conducting targeted case reviews to identify specific opportunities to move toward reunification or other permanency plans in a more timely fashion; enhancing and strengthening CPS clinical supervision through training and coaching experiences; and modifying the Team Decision Making (TDM) process to better incorporate the existing safety decision-making model into child welfare practice.

The data contained within this Semi-Annual Report, when combined with other child welfare-related information in the Department, highlights progress made in certain areas while also helping to identify where continued focus is needed.

### **Child Abuse Hotline and Child Protective Services (CPS) Investigations**

The statewide Child Abuse Hotline received 27,157 calls during this reporting period. Of those, 10,089 – or 37.2 percent – *did not meet* the statutory criteria for a CPS report. Calls that did not meet the criteria for a CPS report included: requests for information or referrals for services; questions about current cases; and allegations of abuse or neglect where the alleged perpetrator was not the child's parent, guardian or custodian (those calls are referred to law enforcement for response). Every call that does not meet the criteria for a CPS report is reviewed within 48 hours by quality assurance staff to ensure the accuracy of that decision.

The statewide Child Abuse Hotline received 17,068 calls during this reporting period that met the statutory criteria for a CPS report. Of those, 215 were referred to other jurisdictions, the military or tribal governments for investigation. This resulted in 16,853 CPS reports being assigned to child welfare specialists for investigation. Compared to the same reporting period last year, this represents an increase of 251 CPS reports assigned for investigation – or 1.5 percent. This increase in CPS reports requiring an investigation has mainly occurred in Maricopa and Pima counties.

Of the 16,853 CPS reports assigned for investigation during this reporting period, 8,403 reports – or 49.9 percent – had investigation closures entered into the Children's Information Library and Data Source (CHILDS) statewide case management information system. Closing a case means that the initial investigation to the original allegations of abuse or neglect has been completed and the appropriate case plan is put in place, as needed. Many factors can impact the closure of investigations, including time needed for child welfare specialists to obtain all information needed to complete an accurate and thorough assessment.

Of the 16,853 CPS reports subject to substantiation during this reporting period, 1,500 – or 8.9 percent – were substantiated. An additional 423 CPS reports – or 2.5 percent – were proposed for substantiation by child welfare specialists and are currently awaiting the results of the appeals process. Over time, the number of substantiated and proposed substantiated CPS reports associated with this time period will

increase as investigation findings are entered into CHILDS. It is sometimes difficult to substantiate allegations of abuse or neglect because current state laws that define child maltreatment do not include many situations related to child neglect or sexual abuse.

### **Children in Out-of-Home Care**

The Division remains committed to working with the community to keep children safe, strengthen families, and prevent the need for children to be removed from their homes. The number of children in out-of-home care increased slightly from 10,207 in the prior reporting period to 10,514 in September 2010. Of the children in out-of-home care, the Division continues its success in placing children in the most family-like setting possible. In September 2010, 8,628 children – or 82.1 percent of all children in out-of-home care – were placed with relatives or licensed foster parents. An additional 21 children were placed with their parents on a trial home visit and 209 youth were residing in independent living settings. Efforts to increase the number of licensed foster parents who are able to meet the needs of children requiring out-of-home placement resulted in 718 new homes being licensed during this reporting period.

The Division continues to focus on the number of young children in shelter and group home care. In September 2010, there were 20 young children ages 0 through 3 in shelter care. This represents a decrease of 11 children – or 35.5 percent – since March 2006. Placement of young children in shelter care continues to be influenced by the need to place some children after regular work hours, such as weekends, as well as the placement of children in a specialized shelter in Pima County for medically fragile children. The Division has also worked diligently to reduce the number of very young children in group homes. In September 2010, there were 2 young children ages 0 to 6 in group homes. This represents a decrease of 34 children – or 94.4 percent – since March 2006. There are times when placement of young children in group homes is in the best interests of the children; for example, when group placement would allow siblings to stay together or when group placement is considered the least restrictive placement for a child with behavioral issues.

The state requires monthly face-to-face visitation with children in foster care. The current report shows that 84.9 percent of the children in foster care received their visitation during the last month of the reporting period. This compares to 87.9 percent receiving their visit during the last month of the reporting period ending March 2010. The Department recognizes a strong correlation between caseworker visits with children and positive outcomes for these children, such as achieving permanency and other indicators of child well-being, and continues to make efforts to improve our rate of visitation.

### **Permanency for Children**

The Division continues to work toward achieving permanency for children placed in out-of-home care. The total number of children achieving permanency through family reunification, adoption or legal guardianship was 3,101 this reporting period, compared to 3,252 the same reporting period last year. As evidenced below, the Division increased adoptions by 11.2 percent over the same period a year ago; it also decreased guardianship by 28.6 percent for the same period. The reunification of children with their parents for the same period a year ago decreased by 7.3 percent.

Compared to the same reporting period last year, in this reporting period:

- 1,843 children exited the system to family reunification, a decrease of 144 children – or 7.3 percent.
- 991 children exited to adoption, an increase of 100 children – or 11.2 percent.
- 267 children exited to guardianship, a decrease of 107 children – or 28.6 percent.



**Challenges**

The Division faces a number of challenges in its efforts to ensure safety and promote permanency for abused and neglected children. Some of the challenges the Division has faced in meeting these goals are:

- Impact of vacancies in Child Welfare Specialist positions.
- Retention of trained and qualified staff.
- Economic factors which create additional stress upon families and increases factors that place children at risk of maltreatment.
- Recruitment of foster homes for older youth ages 12 to 18 years old.

Despite these challenges, the Division continues to ensure child welfare staff has the tools they need to do their jobs effectively, and that both state and federal standards are being implemented. The Division continues to work in partnership with the federal government to meet the federal Child and Family Service Review (CFSR) standards to improve outcomes for the children and families we serve.

## Semi-Annual Comparisons

	Oct 2006 through Mar 2007	Apr 2007 through Sep 2007	Oct 2007 through Mar 2008	Apr 2008 through Sep 2008	Oct 2008 through Mar 2009	Apr 2009 through Sep 2009	Oct 2009 through Mar 2010	Apr 2010 through Sep 2010
Number of Reports Received	16,612	18,078	17,628	17,493	17,094	16,134	17,110	17,068
Number of Reports Substantiated <sup>1</sup>	1,369	1,413	1,223	1,331	1,238	1,296	2,122	1,500
Substantiation Rate	10%	10%	8%	9%	9%	9%	13%	9%
Number of Reports Investigated & Closed	15,017	12,722	10,760	10,064	10,686	10,397	8,149	8,403
Number of Reports Responded To	16,422	17,876	17,413	17,310	16,820	15,496	16,602	16,853
Number of new removals	3,683	3,924	3,742	4,546	3,889	3,819	3,936	4,010
Number of new removals with Voluntary under 18	398	468	408	370	319	148	125	135
Number of Children in Out-of-Home Care on the Last Day of Reporting Period	9,773	9,701	9,721	10,303	10,404	10,112	10,207	10,514
Number of Children in Shelter for More than 21 Days	705	679	626	585	529	450	423	471
Number and Percentage of Children Receiving Visitation In the Last Month of Reporting Period	7,610 (77.9%)	7,283 (75.1%)	7,376 (75.9%)	7,664 (74.4%)	7,247 (69.7%)	8,201 (81.1%)	8,973 (87.9%)	8,930 (84.9%)
Number and Percentage of Children not Receiving Visitation	2,163 (22.1%)	2,418 (24.9%)	2,345 (24.1%)	2,639 (25.6%)	3,157 (30.3%)	1,911 (18.9%)	1,234 (12.1%)	1,584 (15.1%)
Number and Percentage of Parents Receiving Visitation	1,398 (63.1%)	1,241 (63.5%)	1,025 (62.3%)	1,022 (60.2%)	939 (53.6%)	1,364 (59.6%)	1,578 (64.8%)	1,128 (56.4%)
Number of Licensed Foster Homes	3,177	3,512	3,592	3,615	3,923	3,954	3,932	3,747
Number of Foster Home Spaces Available to ACYF	6,498	6,639	6,283	7,116	8,293	8,625	8,789	8,693
Number of New Foster Homes	432	435	794	162	648	107	560	718
Number of Foster Homes Closed	232	100	445	139	340	76	582	903
Number and Percentage of Foster Homes Receiving Visitation In the Last Qtr. Of Reporting Period	2,116 (66.6%)	1,739 (49.5%)	2,137 (59.5%)	2,412 (66.7%)	2,993 (76.3%)	3,224 (81.6%)	3,240 (82.4%)	3,102 (82.8%)
Number and Percentage of Foster Homes not Receiving Visitation	1,061 (33.4%)	1,773 (50.5%)	1,455 (40.5%)	1,203 (33.3%)	930 (23.7%)	730 (18.4%)	692 (17.6)	645 (17.2%)
Number of Children Leaving DES Custody	3,553	3,824	3,512	3,773	3,590	3,894	3,650	3,559
Number of Children With a Case Plan Goal of Adoption	2,439	2,186	1,954	1,856	2,047	2,505	2,411	2,450
Number of Children With a Finalized Adoption	695	773	765	797	764	891	1,034	991

<sup>1</sup> Since the appeals process delays the substantiation of reports, revisions to the substantiation rate for the prior reporting period will occur with every semi-annual report produced.

**Reports of Abuse & Neglect**

Child abuse and neglect are defined in A.R.S. §8-201 and A.R.S. §13-3623 (A). These definitions provide the major categories in this report.

Between April 1, 2010 and September 30, 2010, there were 17,068 incoming communications to the Child Abuse Hotline that met the criteria for a report of abuse or neglect. Of these, 215 were within the jurisdiction of military or tribal governments and were referred to those jurisdictions. This compares to 17,110 incoming communications received during the last reporting period which met the criteria of a report of abuse or neglect.

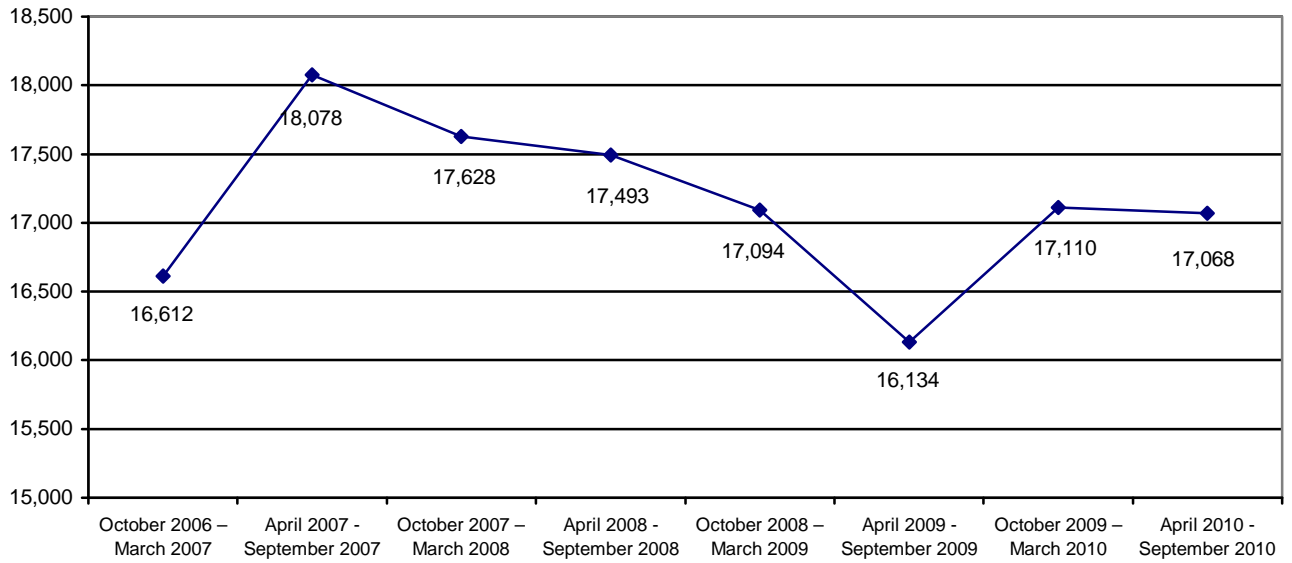
Table 1 shows the number of reports received by the Department by category of maltreatment for the last eight reporting periods. The table shows that for the current reporting period 10,561 or 61.8 percent of the 17,068 reports of maltreatment were related to allegations of neglect, 5,515 or 32.3 percent of the reports were related to allegations of physical abuse, 812 or 4.8 percent of the reports were related to allegations of sexual abuse, and 180 or 1.1 percent of the reports were related to allegations of emotional abuse.

**TABLE 1  
REPORTS BY REPORTING PERIOD AND TYPE OF MALTREATMENT**

	Neglect	Physical Abuse	Sexual Abuse	Emotional Abuse	Total
October 2006 – March 2007	9,838 59.2%	5,571 33.5%	1,007 6.1%	196 1.2%	16,612 100.0%
April 2007 – September 2007	10,922 60.4%	5,836 32.3%	1,108 6.1%	212 1.2%	18,078 100.0%
October 2007 – March 2008	10,449 59.2%	6,005 34.1%	980 5.6%	194 1.1%	17,628 100.0%
April 2008 – September 2008	10,539 60.2%	5,737 32.8%	1,028 5.9%	189 1.1%	17,493 100.0%
October 2008 – March 2009	9,845 57.6%	6,064 35.5%	975 5.7%	210 1.2%	17,094 100.0%
April 2009 – September 2009	9,666 59.9%	5,372 33.3%	919 5.7%	177 1.1%	16,134 100.0%
October 2009 – March 2010	10,127 59.2%	5,866 34.3%	930 5.4%	187 1.1%	17,110 100.0%
April 2010 – September 2010	10,561 61.8%	5,515 32.3%	812 4.8%	180 1.1%	17,068 100.0%

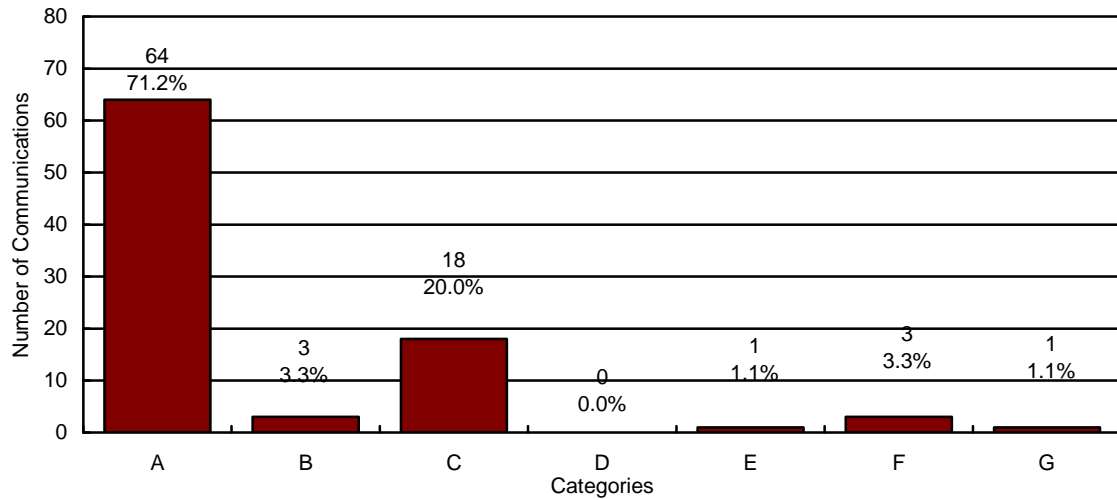
Chart 1 shows that the number of CPS reports received by the CPS Hotline has increased over the past year. Comparing the current reporting period to the prior reporting period, the number of reports received decreased by 42 reports or 0.2 percent.

**CHART 1  
REPORTS OF CHILD ABUSE AND NEGLECT BY REPORTING PERIOD**



In addition to the 17,068 reports during the current reporting period, the Child Abuse Hotline received 10,089 communications that did not meet the statutory criteria of a report of maltreatment. A random sample of these communications is contained in the chart below.

**CHART 2**  
**SAMPLE OF COMMUNICATIONS TO THE CHILD ABUSE HOTLINE THAT DO NOT MEET THE STATUTORY REQUIREMENTS OF A REPORT OF ABUSE OR NEGLECT**



N=90

- A = Concern Only/No Allegation of Child Abuse or Neglect**
- B = Out of CPS Jurisdiction**
- C = Call Appropriate for Law Enforcement Jurisdiction<sup>2</sup>**
- D = Non-Caretaker Neglect/Child No Longer at Risk**
- E = Insufficient Information**
- F = Truancy/Custody Issues**
- G = Current Case Questions or Referrals**

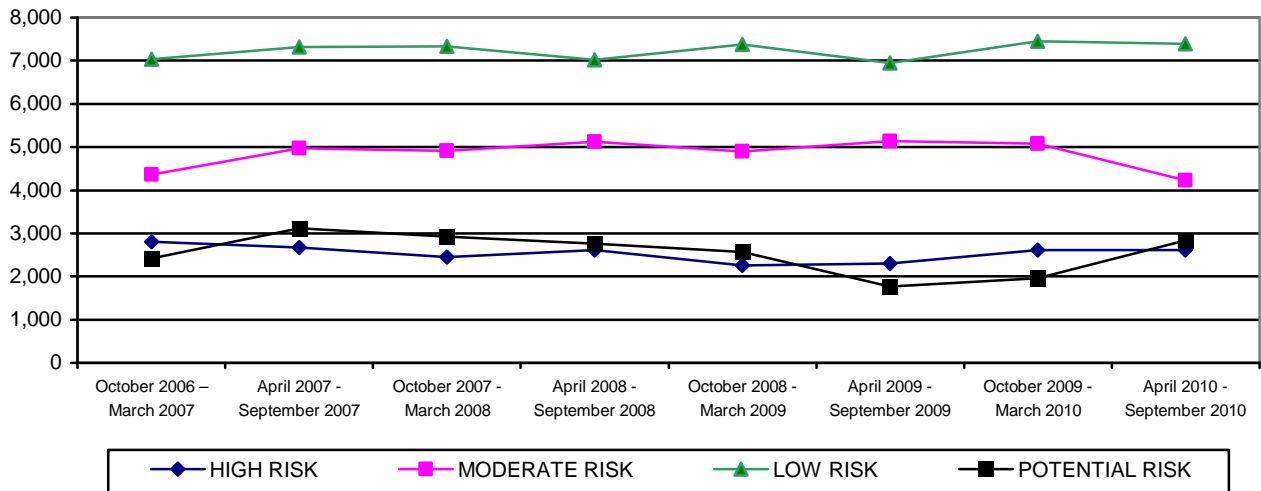
All communications that do not meet the statutory requirements for a field investigation of abuse or neglect are reviewed within 48 hours by DES quality assurance staff.

<sup>2</sup> The category “Call Appropriate for Law Enforcement Jurisdiction” refers to a situation where the alleged perpetrator is not a parent or primary caretaker and the allegations, if true, would constitute a crime.

For the current reporting period, the CPS Hotline classified 15.3 percent of the reports received as high risk, 24.8 percent as moderate risk, 43.3 percent as low risk, and 16.6 percent as potential risk.

For the current reporting period, the CPS Hotline classified 1.1 percent of CPS reports as emotional abuse, 61.8 percent as neglect, 32.3 percent as physical abuse, and 4.8 percent as sexual abuse.

**CHART 3  
NUMBER OF REPORTS RECEIVED BY RISK LEVEL**



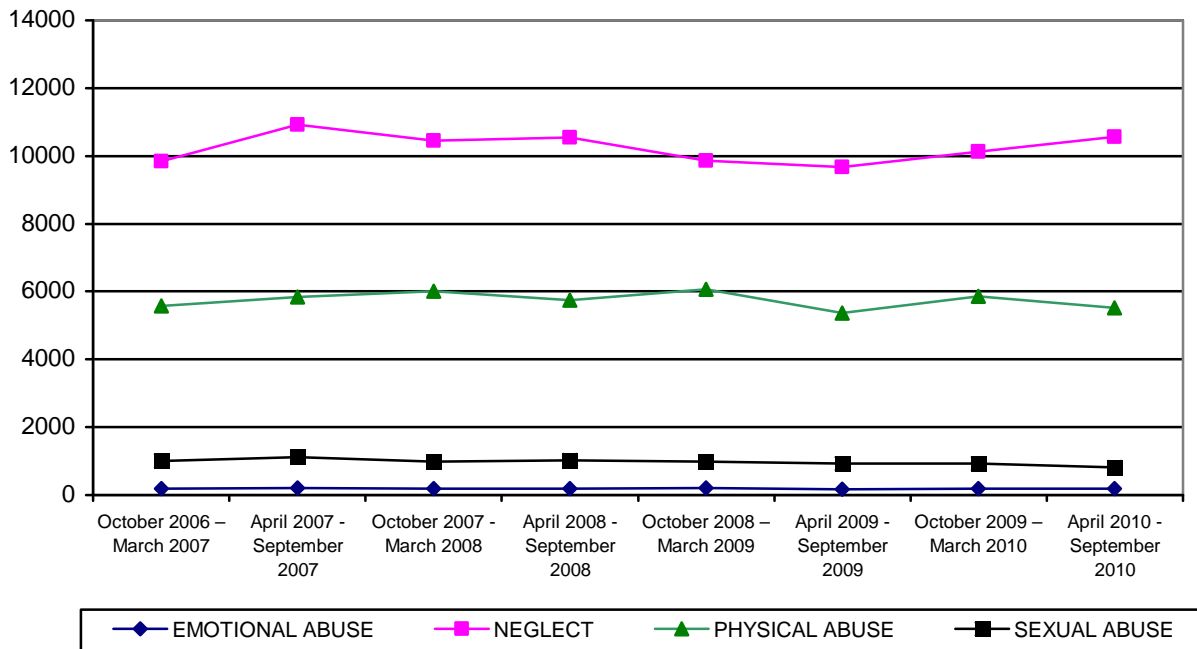
**TABLE 2  
NUMBER OF REPORTS RECEIVED BY RISK LEVEL AND COUNTY FOR PERIOD OF  
APRIL 1, 2010 THROUGH SEPTEMBER 30, 2010**

COUNTY	HIGH	MODERATE	LOW	POTENTIAL	TOTAL	% OF TOTAL
APACHE	12	22	36	15	85	0.5%
COCHISE	63	83	170	64	380	2.2%
COCONINO	60	86	118	56	320	1.9%
GILA	13	17	34	9	73	0.4%
GRAHAM	13	32	37	9	91	0.5%
GREENLEE	3	7	10	0	20	0.1%
LA PAZ	11	14	18	12	55	0.3%
MARICOPA	1,598	2,479	4,233	1,649	9,959	58.3%
MOHAVE	103	159	257	79	598	3.5%
NAVAJO	47	56	105	43	251	1.5%
PIMA	424	746	1,405	495	3,070	18.0%
PINAL	150	299	502	218	1,169	6.9%
SANTA CRUZ	21	23	28	15	87	0.5%
YAVAPAI	47	131	265	97	540	3.2%
YUMA	51	79	168	72	370	2.2%
STATEWIDE	2,616	4,233	7,386	2,833	17,068	100.0%
% OF TOTAL	15.3%	24.8%	43.3%	16.6%	100.0%	

**TABLE 3**  
**NUMBER OF REPORTS RECEIVED BY RISK LEVEL AND COUNTY FOR PERIOD OF**  
**OCTOBER 1, 2009 THROUGH MARCH 31, 2010**

COUNTY	HIGH	MODERATE	LOW	POTENTIAL	TOTAL	% OF TOTAL
APACHE	12	21	30	6	69	0.4%
COCHISE	54	132	187	38	411	2.4%
COCONINO	42	102	129	48	321	1.9%
GILA	19	15	31	10	75	0.4%
GRAHAM	19	36	28	3	86	0.5%
GREENLEE	2	3	5	2	12	0.1%
LA PAZ	9	24	26	5	64	0.4%
MARICOPA	1,615	2,924	4,310	1,163	10,012	58.5%
MOHAVE	78	177	222	57	534	3.1%
NAVAJO	41	88	118	27	274	1.6%
PIMA	414	913	1,496	351	3,174	18.6%
PINAL	167	337	473	125	1,102	6.4%
SANTA CRUZ	9	17	32	10	68	0.4%
YAVAPAI	63	167	212	76	518	3.0%
YUMA	64	126	157	43	390	2.3%
STATEWIDE	2,608	5,082	7,456	1,964	17,110	100.0%
% OF TOTAL	15.2%	29.7%	43.6%	11.5%	100.0%	

**CHART 4**  
**NUMBER OF REPORTS RECEIVED BY TYPE OF MALTREATMENT**



**TABLE 4**  
**NUMBER OF REPORTS RECEIVED BY TYPE OF MALTREATMENT AND COUNTY FOR**  
**PERIOD OF APRIL 1, 2010 THROUGH SEPTEMBER 30, 2010**

COUNTY	EMOTIONAL ABUSE	NEGLECT	PHYSICAL ABUSE	SEXUAL ABUSE	TOTAL	% OF TOTAL
APACHE	0	55	26	4	85	0.5%
COCHISE	6	232	125	17	380	2.2%
COCONINO	1	204	100	15	320	1.9%
GILA	0	50	18	5	73	0.4%
GRAHAM	1	59	28	3	91	0.5%
GREENLEE	0	10	8	2	20	0.1%
LA PAZ	1	39	11	4	55	0.3%
MARICOPA	104	6,100	3,263	492	9,959	58.3%
MOHAVE	2	409	163	24	598	3.5%
NAVAJO	3	174	62	12	251	1.5%
PIMA	33	1,961	955	121	3,070	18.0%
PINAL	15	686	405	63	1,169	6.9%
SANTA CRUZ	1	48	30	8	87	0.5%
YAVAPAI	9	319	191	21	540	3.2%
YUMA	4	215	130	21	370	2.2%
STATEWIDE	180	10,561	5,515	812	17,068	100.0%
% OF TOTAL	1.1%	61.8%	32.3%	4.8%	100.0%	

**TABLE 5**  
**NUMBER OF REPORTS RECEIVED BY TYPE OF MALTREATMENT AND COUNTY FOR**  
**PERIOD OF OCTOBER 1, 2009 THROUGH MARCH 31, 2010**

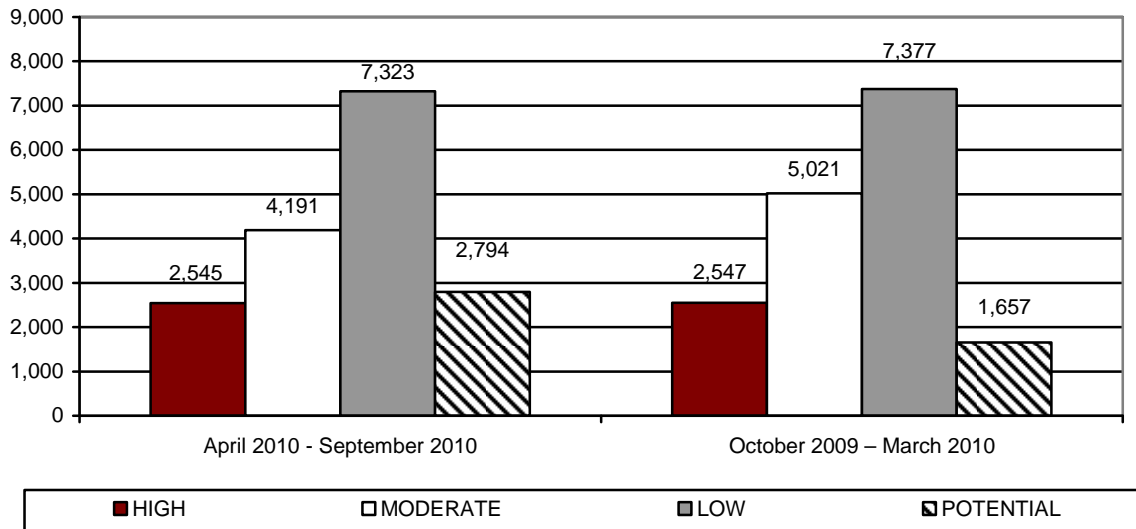
COUNTY	EMOTIONAL ABUSE	NEGLECT	PHYSICAL ABUSE	SEXUAL ABUSE	TOTAL	% OF TOTAL
APACHE	0	41	25	3	69	0.4%
COCHISE	3	253	143	12	411	2.4%
COCONINO	3	179	124	15	321	1.9%
GILA	0	48	24	3	75	0.4%
GRAHAM	1	60	18	7	86	0.5%
GREENLEE	0	7	4	1	12	0.1%
LA PAZ	1	37	19	7	64	0.4%
MARICOPA	98	5,846	3,496	572	10,012	58.5%
MOHAVE	5	326	185	18	534	3.1%
NAVAJO	3	165	89	17	274	1.6%
PIMA	52	1,919	1,049	154	3,174	18.6%
PINAL	13	617	404	68	1,102	6.4%
SANTA CRUZ	0	34	32	2	68	0.4%
YAVAPAI	6	338	145	29	518	3.0%
YUMA	2	257	109	22	390	2.3%
STATEWIDE	187	10,127	5,866	930	17,110	100.0%
% OF TOTAL	1.1%	59.2%	34.3%	5.4%	100.0%	



**ASSIGNMENT OF INVESTIGATIONS**

During the reporting period, there were 17,068 calls to the hotline that met the statutory criteria for a report. Of those, 215 reports fell within the jurisdiction of military or tribal governments. This left 16,853 reports that were assigned to be investigated by CPS. The following tables and charts in this section provide statewide and county level information on these reports.

**CHART 5  
NUMBER OF REPORTS ASSIGNED FOR INVESTIGATION BY RISK LEVEL AND REPORTING PERIOD**



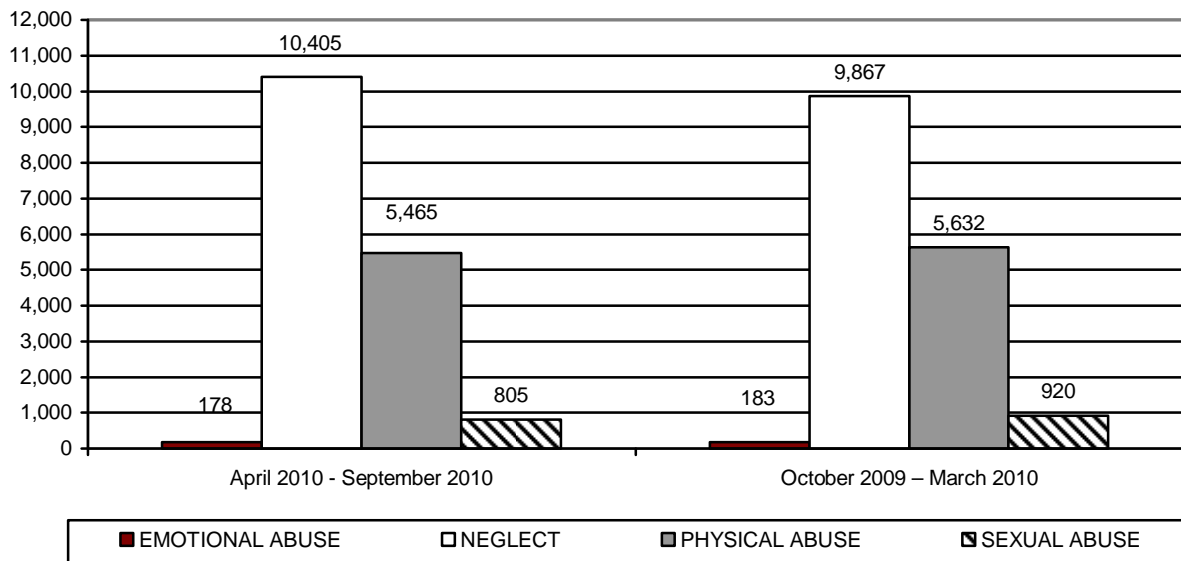
**TABLE 6  
NUMBER OF REPORTS ASSIGNED FOR INVESTIGATION BY RISK LEVEL AND COUNTY  
FOR PERIOD OF APRIL 1, 2010 THROUGH SEPTEMBER 30, 2010**

COUNTY	HIGH	MODERATE	LOW	POTENTIAL	TOTAL	% OF TOTAL
APACHE	9	13	32	10	64	0.4%
COCHISE	62	83	170	63	378	2.2%
COCONINO	46	75	106	47	274	1.6%
GILA	11	17	33	8	69	0.4%
GRAHAM	12	30	36	8	86	0.5%
GREENLEE	3	7	10	0	20	0.1%
LA PAZ	6	12	14	11	43	0.3%
MARICOPA	1,583	2,474	4,225	1,647	9,929	58.9%
MOHAVE	100	157	255	78	590	3.5%
NAVAJO	38	51	93	36	218	1.3%
PIMA	419	745	1,400	491	3,055	18.1%
PINAL	142	295	491	214	1,142	6.8%
SANTA CRUZ	21	23	28	15	87	0.5%
YAVAPAI	46	131	262	95	534	3.2%
YUMA	47	78	168	71	364	2.2%
STATEWIDE	2,545	4,191	7,323	2,794	16,853	100.0%
% OF TOTAL	15.1%	24.9%	43.4%	16.6%	100.0%	

**TABLE 7  
NUMBER OF REPORTS ASSIGNED FOR INVESTIGATION BY RISK LEVEL AND COUNTY  
FOR PERIOD OF OCTOBER 1, 2009 THROUGH MARCH 31, 2010**

COUNTY	HIGH	MODERATE	LOW	POTENTIAL	TOTAL	% OF TOTAL
APACHE	7	13	22	2	44	0.3%
COCHISE	54	131	187	34	406	2.5%
COCONINO	38	92	103	36	269	1.6%
GILA	13	13	31	9	66	0.4%
GRAHAM	16	36	28	2	82	0.5%
GREENLEE	2	3	5	2	12	0.1%
LA PAZ	6	22	20	3	51	0.3%
MARICOPA	1,604	2,913	4,293	1,000	9,810	59.1%
MOHAVE	73	175	221	47	516	3.1%
NAVAJO	32	78	108	21	239	1.4%
PIMA	412	909	1,492	289	3,102	18.7%
PINAL	157	326	468	102	1,053	6.3%
SANTA CRUZ	9	17	32	8	66	0.4%
YAVAPAI	61	167	211	66	505	3.0%
YUMA	63	126	156	36	381	2.3%
STATEWIDE	2,547	5,021	7,377	1,657	16,602	100.0%
% OF TOTAL	15.3%	30.2%	44.5%	10.0%	100.0%	

**CHART 6  
NUMBER OF REPORTS ASSIGNED FOR INVESTIGATION BY TYPE OF MALTREATMENT  
AND REPORTING PERIOD**



**TABLE 8**  
**NUMBER OF REPORTS ASSIGNED FOR INVESTIGATION BY TYPE OF MALTREATMENT**  
**BY COUNTY FOR PERIOD OF APRIL 1, 2010 THROUGH SEPTEMBER 30, 2010**

COUNTY	EMOTIONAL ABUSE	NEGLECT	PHYSICAL ABUSE	SEXUAL ABUSE	TOTAL	% OF TOTAL
APACHE	0	42	21	1	64	0.4%
COCHISE	6	231	124	17	378	2.2%
COCONINO	1	172	87	14	274	1.6%
GILA	0	46	18	5	69	0.4%
GRAHAM	1	57	26	2	86	0.5%
GREENLEE	0	10	8	2	20	0.1%
LA PAZ	0	29	10	4	43	0.3%
MARICOPA	103	6,078	3,257	491	9,929	58.9%
MOHAVE	2	402	162	24	590	3.5%
NAVAJO	3	151	53	11	218	1.3%
PIMA	33	1,951	950	121	3,055	18.1%
PINAL	15	665	399	63	1,142	6.8%
SANTA CRUZ	1	48	30	8	87	0.5%
YAVAPAI	9	314	190	21	534	3.2%
YUMA	4	209	130	21	364	2.2%
STATEWIDE	178	10,405	5,465	805	16,853	100.0%
% OF TOTAL	1.1%	61.7%	32.4%	4.8%	100.0%	

**TABLE 9**  
**NUMBER OF REPORTS ASSIGNED FOR INVESTIGATION BY TYPE OF MALTREATMENT**  
**BY COUNTY FOR PERIOD OF OCTOBER 1, 2009 THROUGH MARCH 31, 2010**

COUNTY	EMOTIONAL ABUSE	NEGLECT	PHYSICAL ABUSE	SEXUAL ABUSE	TOTAL	% OF TOTAL
APACHE	0	26	17	1	44	0.3%
COCHISE	3	252	139	12	406	2.5%
COCONINO	0	151	105	13	269	1.6%
GILA	0	40	23	3	66	0.4%
GRAHAM	1	56	18	7	82	0.5%
GREENLEE	0	7	4	1	12	0.1%
LA PAZ	1	27	16	7	51	0.3%
MARICOPA	97	5,767	3,377	569	9,810	59.1%
MOHAVE	5	315	178	18	516	3.1%
NAVAJO	3	141	79	16	239	1.4%
PIMA	52	1,880	1,016	154	3,102	18.7%
PINAL	13	588	386	66	1,053	6.3%
SANTA CRUZ	0	33	31	2	66	0.4%
YAVAPAI	6	330	140	29	505	3.0%
YUMA	2	254	103	22	381	2.3%
STATEWIDE	183	9,867	5,632	920	16,602	100.0%
% OF TOTAL	1.1%	59.5%	33.9%	5.5%	100.0%	

During this reporting period, there were 16,853 reports assigned for investigation. Of these, CPS completed 8,403 investigations or 49.9 percent. Investigations not completed remain open when the investigation is still in process, when the CPS specialist is waiting for the results of a law enforcement investigation and/or receipt of records that impact the investigation finding, or when the investigation has been completed but is awaiting supervisory review and approval.

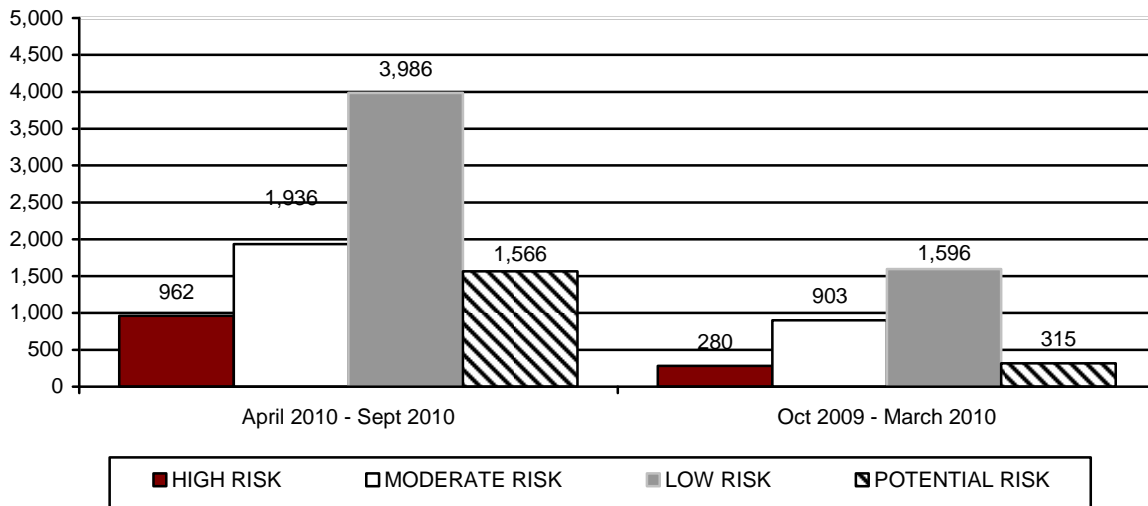
**INVESTIGATIONS OF CHILD ABUSE AND NEGLECT**

**TABLE 10  
NUMBER OF REPORTS NOT RESPONDED TO BY RISK LEVEL AND COUNTY FOR  
PERIOD OF APRIL 1, 2010 THROUGH SEPTEMBER 30, 2010**

COUNTY	HIGH	MODERATE	LOW	POTENTIAL	TOTAL	% OF TOTAL
APACHE	0	0	0	0	0	0.0%
COCHISE	0	0	0	0	0	0.0%
COCONINO	0	0	0	0	0	0.0%
GILA	0	0	0	0	0	0.0%
GRAHAM	0	0	0	0	0	0.0%
GREENLEE	0	0	0	0	0	0.0%
LA PAZ	0	0	0	0	0	0.0%
MARICOPA	0	0	0	0	0	0.0%
MOHAVE	0	0	0	0	0	0.0%
NAVAJO	0	0	0	0	0	0.0%
PIMA	0	0	0	0	0	0.0%
PINAL	0	0	0	0	0	0.0%
SANTA CRUZ	0	0	0	0	0	0.0%
YAVAPAI	0	0	0	0	0	0.0%
YUMA	0	0	0	0	0	0.0%
STATEWIDE	0	0	0	0	0	0.0%
% OF TOTAL	0.0%	0.0%	0.0%	0.0%	0.0%	

By statute, a random sample of reports not responded to for the period is required. In addition, short descriptions of these reports are also required. As there were no reports without a response for this reporting period, the sample of reports has been omitted.

**CHART 7**  
**NUMBER OF REPORTS ASSIGNED FOR INVESTIGATION BY RISK LEVEL AND REPORTING PERIOD FOR REPORTS STILL OPEN FOR INVESTIGATION**



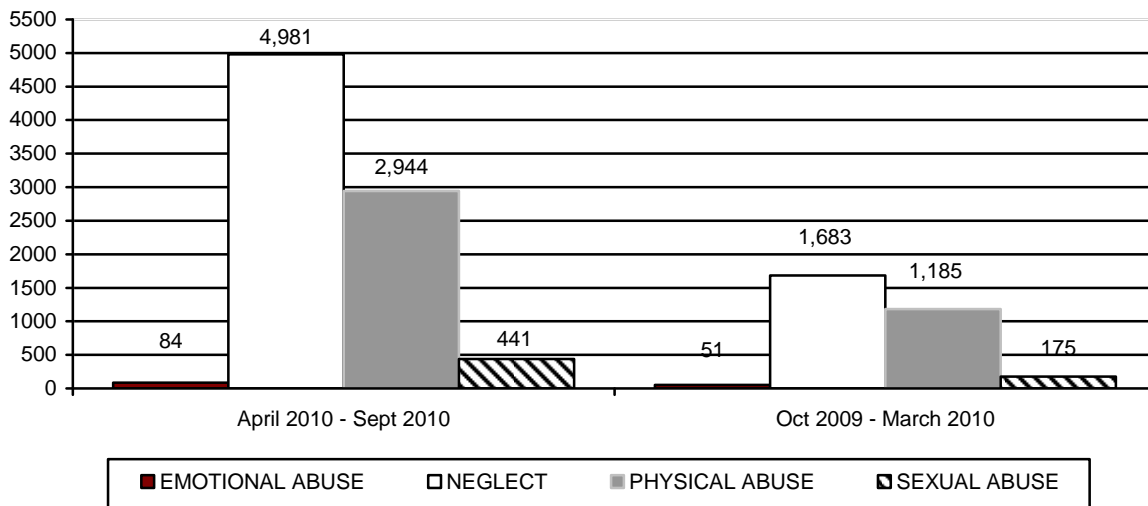
**TABLE 11**  
**NUMBER OF REPORTS BY RISK LEVEL AND COUNTY FOR REPORTS STILL OPEN FOR INVESTIGATION FOR PERIOD OF APRIL 1, 2010 THROUGH SEPTEMBER 30, 2010**

COUNTY	HIGH	MODERATE	LOW	POTENTIAL	TOTAL	% OF TOTAL
APACHE	7	12	28	9	56	0.7%
COCHISE	34	45	98	41	218	2.6%
COCONINO	5	8	11	8	32	0.4%
GILA	3	2	3	0	8	0.1%
GRAHAM	12	29	33	7	81	1.0%
GREENLEE	3	5	10	0	18	0.2%
LA PAZ	5	12	13	11	41	0.5%
MARICOPA	537	1,064	2,169	838	4,608	54.4%
MOHAVE	42	80	155	59	336	4.0%
NAVAJO	28	44	79	31	182	2.2%
PIMA	158	326	780	305	1,569	18.6%
PINAL	78	192	357	153	780	9.2%
SANTA CRUZ	17	22	26	14	79	0.9%
YAVAPAI	12	45	115	47	219	2.6%
YUMA	21	50	109	43	223	2.6%
STATEWIDE	962	1,936	3,986	1,566	8,450	100.0%
% OF TOTAL	11.4%	22.9%	47.2%	18.5%	100.0%	

**TABLE 12**  
**NUMBER OF REPORTS BY RISK LEVEL AND COUNTY FOR REPORTS STILL OPEN FOR INVESTIGATION FOR PERIOD OF OCTOBER 1, 2009 THROUGH MARCH 31, 2010**

COUNTY	HIGH	MODERATE	LOW	POTENTIAL	TOTAL	% OF TOTAL
APACHE	1	5	13	0	19	0.6%
COCHISE	11	51	88	20	170	5.5%
COCONINO	0	7	2	1	10	0.3%
GILA	0	0	1	0	1	0.1%
GRAHAM	4	14	15	2	35	1.1%
GREENLEE	2	1	2	0	5	0.2%
LA PAZ	2	11	9	1	23	0.7%
MARICOPA	114	360	646	127	1,247	40.4%
MOHAVE	6	30	51	9	96	3.1%
NAVAJO	11	36	76	11	134	4.3%
PIMA	65	211	424	93	793	25.6%
PINAL	42	107	165	30	344	11.1%
SANTA CRUZ	5	12	27	5	49	1.6%
YAVAPAI	3	27	30	8	68	2.2%
YUMA	14	31	47	8	100	3.2%
STATEWIDE	280	903	1,596	315	3,094	100.0%
% OF TOTAL	9.1%	29.2%	51.5%	10.2%	100.0%	

**CHART 8**  
**NUMBER OF REPORTS ASSIGNED FOR INVESTIGATION BY TYPE OF MALTREATMENT FOR REPORTS STILL OPEN FOR INVESTIGATION**



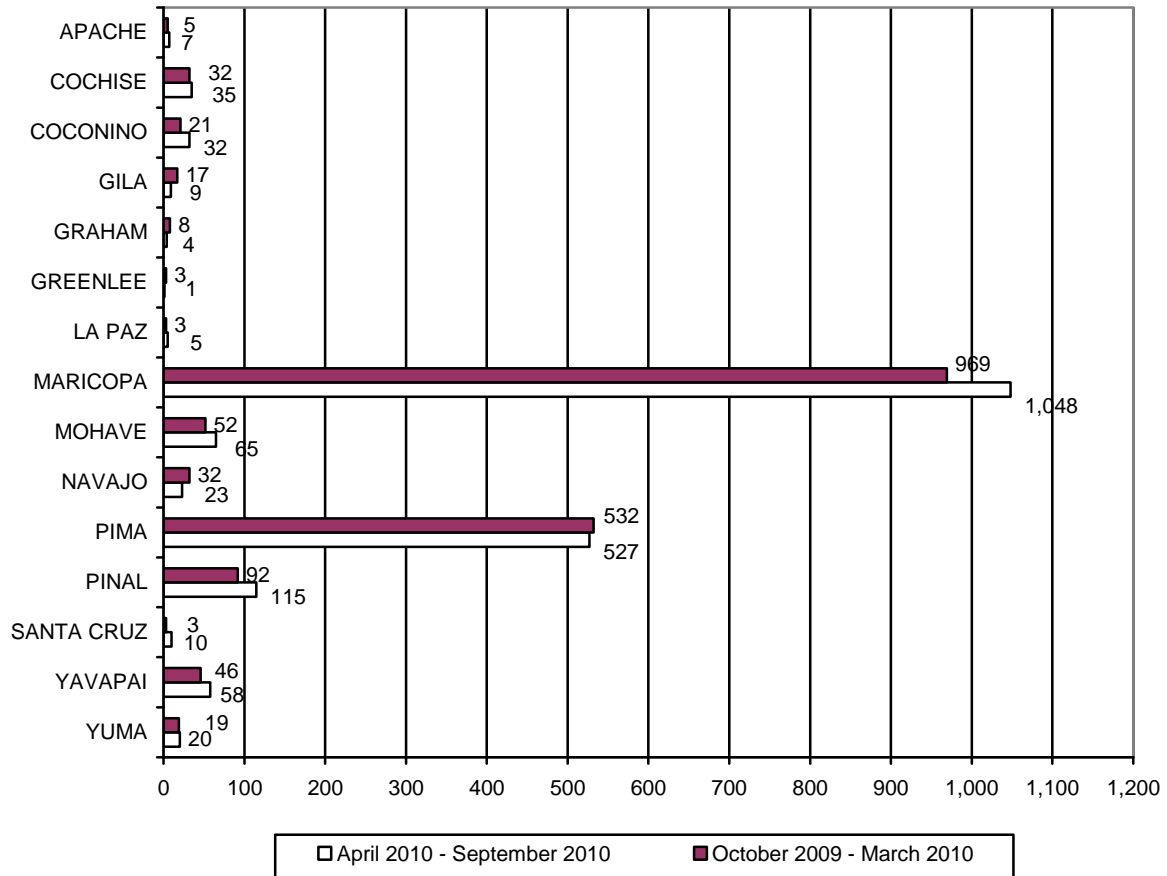
**TABLE 13**  
**NUMBER OF REPORTS BY TYPE OF MALTREATMENT AND COUNTY FOR REPORTS**  
**STILL OPEN FOR INVESTIGATION FOR PERIOD OF**  
**APRIL 1, 2010 THROUGH SEPTEMBER 30, 2010**

COUNTY	EMOTIONAL ABUSE	NEGLECT	PHYSICAL ABUSE	SEXUAL ABUSE	TOTAL	% OF TOTAL
APACHE	0	39	16	1	56	0.7%
COCHISE	2	130	75	11	218	2.6%
COCONINO	0	18	12	2	32	0.4%
GILA	0	6	2	0	8	0.1%
GRAHAM	1	54	24	2	81	1.0%
GREENLEE	0	9	8	1	18	0.2%
LA PAZ	0	27	10	4	41	0.5%
MARICOPA	48	2,679	1,626	255	4,608	54.4%
MOHAVE	2	220	99	15	336	4.0%
NAVAJO	3	126	45	8	182	2.2%
PIMA	13	966	522	68	1,569	18.6%
PINAL	10	429	297	44	780	9.2%
SANTA CRUZ	1	43	28	7	79	0.9%
YAVAPAI	2	118	91	8	219	2.6%
YUMA	2	117	89	15	223	2.6%
STATEWIDE	84	4,981	2,944	441	8,450	100.0%
% OF TOTAL	1.0%	59.0%	34.8%	5.2%	100.0%	

**TABLE 14**  
**NUMBER OF REPORTS BY TYPE OF MALTREATMENT AND COUNTY FOR REPORTS**  
**STILL OPEN FOR INVESTIGATION FOR PERIOD OF**  
**OCTOBER 1, 2009 THROUGH MARCH 31, 2010**

COUNTY	EMOTIONAL ABUSE	NEGLECT	PHYSICAL ABUSE	SEXUAL ABUSE	TOTAL	% OF TOTAL
APACHE	0	12	7	0	19	0.6%
COCHISE	2	95	67	6	170	5.5%
COCONINO	0	8	2	0	10	0.3%
GILA	0	1	0	0	1	0.1%
GRAHAM	1	22	10	2	35	1.1%
GREENLEE	0	5	0	0	5	0.2%
LA PAZ	0	10	9	4	23	0.7%
MARICOPA	19	633	508	87	1,247	40.4%
MOHAVE	1	58	34	3	96	3.1%
NAVAJO	3	77	44	10	134	4.3%
PIMA	19	462	285	27	793	25.6%
PINAL	5	171	143	25	344	11.1%
SANTA CRUZ	0	24	24	1	49	1.6%
YAVAPAI	0	41	24	3	68	2.2%
YUMA	1	64	28	7	100	3.2%
STATEWIDE	51	1,683	1,185	175	3,094	100.0%
% OF TOTAL	1.7%	54.3%	38.3%	5.7%	100.0%	

**CHART 9  
NUMBER OF REPORTS ASSIGNED FOR INVESTIGATION WHERE A REMOVAL OCCURRED**





**TABLE 15**  
**NUMBER OF REPORTS ASSIGNED FOR INVESTIGATION BY COUNTY WHERE A**  
**REMOVAL OCCURRED FOR THE PERIOD APRIL 1, 2010 THROUGH SEPTEMBER 30, 2010**

COUNTY	NUMBER OF REPORTS ASSIGNED	NUMBER OF REPORTS ASSIGNED WITH A REMOVAL	% OF REPORTS WHERE A CHILD WAS PLACED IN OUT-OF-HOME CARE
APACHE	64	7	10.9%
COCHISE	378	35	9.3%
COCONINO	274	32	11.7%
GILA	69	9	13.0%
GRAHAM	86	4	4.7%
GREENLEE	20	1	5.0%
LA PAZ	43	5	11.6%
MARICOPA	9,929	1,048	10.6%
MOHAVE	590	65	11.0%
NAVAJO	218	23	10.6%
PIMA	3,055	527	17.3%
PINAL	1,142	115	10.1%
SANTA CRUZ	87	10	11.5%
YAVAPAI	534	58	10.9%
YUMA	364	20	5.5%
STATEWIDE	16,853	1,959	11.6%

**TABLE 16**  
**NUMBER OF REPORTS ASSIGNED FOR INVESTIGATION BY COUNTY WHERE A**  
**REMOVAL OCCURRED FOR THE PERIOD OCTOBER 1, 2009 THROUGH MARCH 31, 2010**

COUNTY	NUMBER OF REPORTS ASSIGNED	NUMBER OF REPORTS ASSIGNED WITH A REMOVAL	% OF REPORTS WHERE A CHILD WAS PLACED IN OUT-OF-HOME CARE
APACHE	44	5	11.4%
COCHISE	406	32	7.9%
COCONINO	269	21	7.8%
GILA	66	17	25.8%
GRAHAM	82	8	9.8%
GREENLEE	12	3	25.0%
LA PAZ	51	3	5.9%
MARICOPA	9,810	969	9.9%
MOHAVE	516	52	10.1%
NAVAJO	239	32	13.4%
PIMA	3,102	532	17.2%
PINAL	1,053	92	8.7%
SANTA CRUZ	66	3	4.5%
YAVAPAI	505	46	9.1%
YUMA	381	19	5.0%
STATEWIDE	16,602	1,834	11.0%

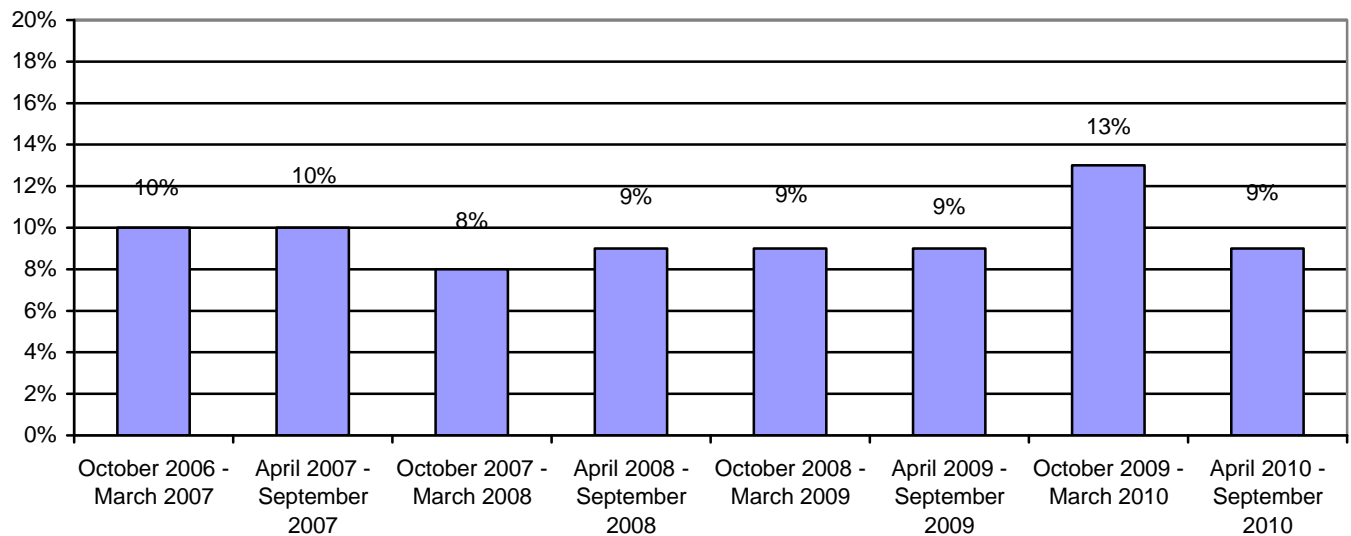
**COMPLETED INVESTIGATIONS**

Substantiated reports are reports where the Department has determined that at least one of the allegations in the report of abuse and neglect is true. The number of reports that are considered substantiated are a subset of the total number of reports that were received, investigated, and closed during the reporting period.

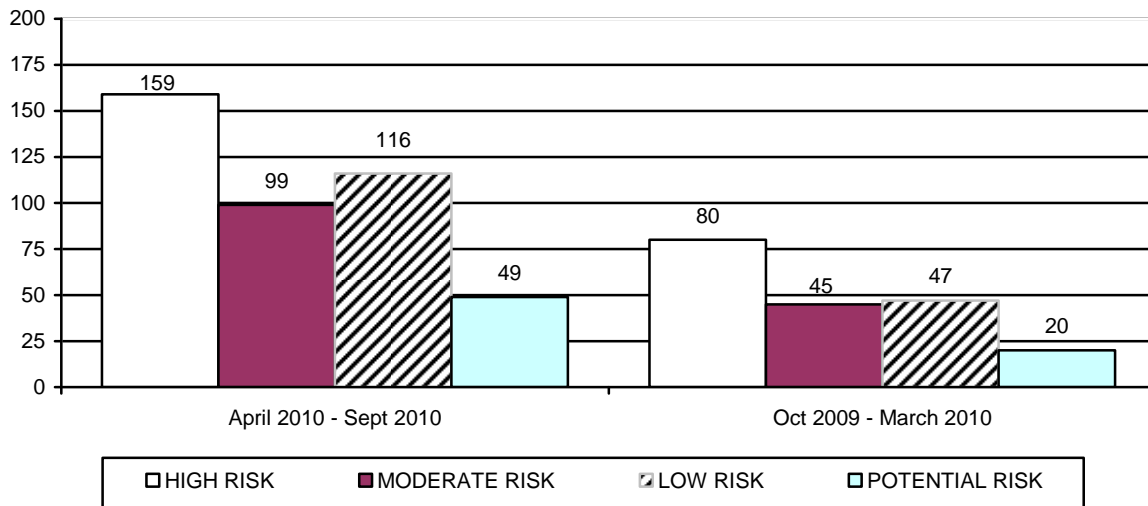
The preliminary number of CPS reports that are substantiated for this reporting period is 1,500. For the prior reporting period, the number of CPS reports that were assigned for investigation that resulted in substantiated findings was revised from 1,311 to 2,122 to reflect subsequent decisions based on parents' rights to due process. For the current reporting period, 39.8 percent of substantiated investigative findings were classified as high risk, 28.4 percent as moderate risk, 25.0 percent as low risk, and 6.8 percent as potential risk. Prior to October 1, 2009 potential risk reports were not substantiated by CPS. For the prior reporting period, 41.5 percent of substantiated investigative findings were classified as high risk, 31.3 percent as moderate risk, 22.9 percent as low risk, and 4.3 percent as potential risk.

- There were 16,853 reports received during the current reporting period that were subject to substantiation. This results in a preliminary substantiation rate of 9 percent for the current reporting period.
- There were 16,602 reports received during the prior reporting period that were subject to substantiation. This results in a 13 percent substantiation rate for the prior reporting period.

**CHART 10  
SUBSTANTIATION RATE BY REPORTING PERIOD**



**CHART 11  
NUMBER OF REPORTS ASSIGNED FOR INVESTIGATION BY RISK LEVEL AND REPORTING PERIOD THAT RESULTED IN PROPOSED SUBSTANTIATION**



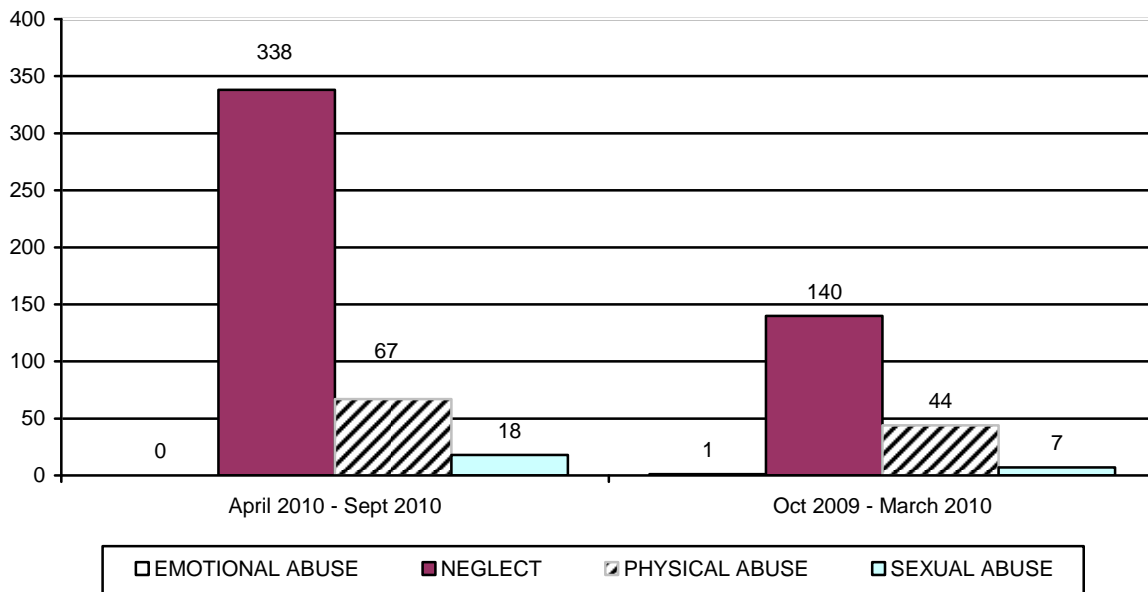
**TABLE 17  
NUMBER OF REPORTS ASSIGNED FOR INVESTIGATION BY RISK LEVEL AND COUNTY THAT RESULTED IN PROPOSED SUBSTANTIATION FOR PERIOD OF APRIL 1, 2010 THROUGH SEPTEMBER 30, 2010**

COUNTY	HIGH	MODERATE	LOW	POTENTIAL	TOTAL	% OF TOTAL
APACHE	0	0	0	0	0	0.0
COCHISE	3	2	4	1	10	2.4
COCONINO	2	4	3	0	9	2.1
GILA	1	1	0	0	2	0.5
GRAHAM	0	0	0	0	0	0.0
GREENLEE	0	0	0	0	0	0.0
LA PAZ	0	0	0	0	0	0.0
MARICOPA	108	54	65	38	265	62.6
MOHAVE	3	0	7	0	10	2.4
NAVAJO	0	1	1	0	2	0.5
PIMA	20	20	28	4	72	17.0
PINAL	16	12	4	3	35	8.3
SANTA CRUZ	0	0	0	0	0	0.0
YAVAPAI	3	4	3	2	12	2.8
YUMA	3	1	1	1	6	1.4
STATEWIDE	159	99	116	49	423	100.0%
% OF TOTAL	37.6%	23.4%	27.4%	11.6%	100.0%	

**TABLE 18**  
**NUMBER OF REPORTS ASSIGNED FOR INVESTIGATION BY RISK LEVEL AND COUNTY**  
**THAT RESULTED IN PROPOSED SUBSTANTIATION FOR PERIOD OF**  
**OCTOBER 1, 2009 THROUGH MARCH 31, 2010**

COUNTY	HIGH	MODERATE	LOW	POTENTIAL	TOTAL	% OF TOTAL
APACHE	0	0	0	0	0	0.0
COCHISE	1	0	0	0	1	0.5
COCONINO	1	1	2	0	4	2.1
GILA	4	2	2	0	8	4.2
GRAHAM	0	1	0	0	1	0.5
GREENLEE	0	0	0	0	0	0.0
LA PAZ	1	0	0	0	1	0.5
MARICOPA	56	33	33	19	141	73.4
MOHAVE	2	1	1	0	4	2.1
NAVAJO	2	1	0	0	3	1.6
PIMA	2	2	2	0	6	3.1
PINAL	7	3	7	1	18	9.4
SANTA CRUZ	0	0	0	0	0	0.0
YAVAPAI	4	0	0	0	4	2.1
YUMA	0	1	0	0	1	0.5
STATEWIDE	80	45	47	20	192	100.0%
% OF TOTAL	41.7%	23.4%	24.5%	10.4%	100.0%	

**CHART 12**  
**NUMBER OF REPORTS ASSIGNED FOR INVESTIGATION BY TYPE OF MALTREATMENT**  
**THAT RESULTED IN PROPOSED SUBSTANTIATION**



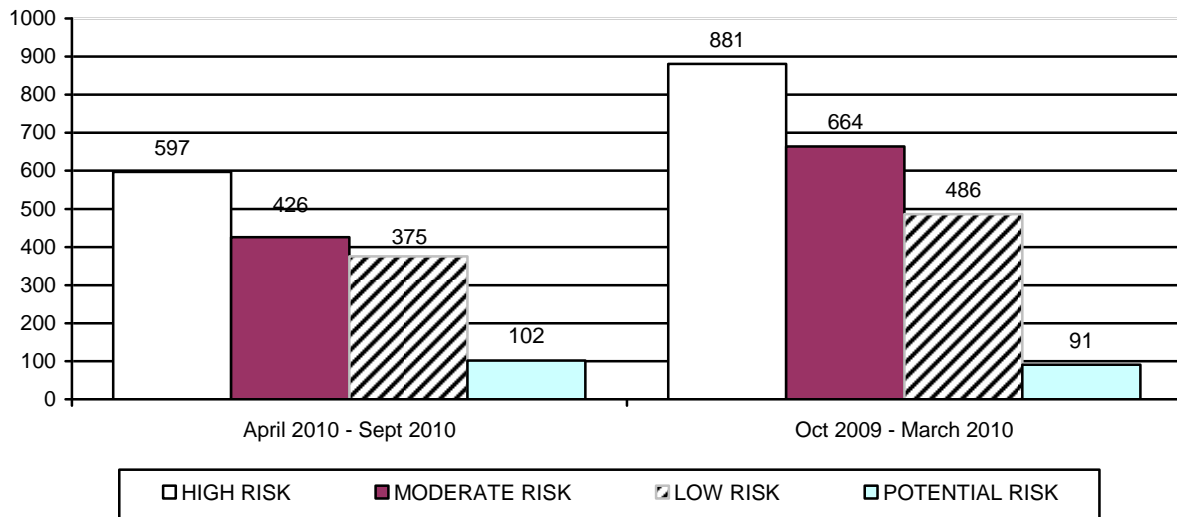
**TABLE 19**  
**NUMBER OF REPORTS ASSIGNED FOR INVESTIGATION BY TYPE OF MALTREATMENT**  
**BY COUNTY THAT RESULTED IN PROPOSED SUBSTANTIATION FOR PERIOD OF**  
**APRIL 1, 2010 THROUGH SEPTEMBER 30, 2010**

COUNTY	EMOTIONAL ABUSE	NEGLECT	PHYSICAL ABUSE	SEXUAL ABUSE	TOTAL	% OF TOTAL
APACHE	0	0	0	0	0	0.0%
COCHISE	0	6	3	1	10	2.4%
COCONINO	0	6	3	0	9	2.1%
GILA	0	2	0	0	2	0.5%
GRAHAM	0	0	0	0	0	0.0%
GREENLEE	0	0	0	0	0	0.0%
LA PAZ	0	0	0	0	0	0.0%
MARICOPA	0	215	38	12	265	62.6%
MOHAVE	0	8	2	0	10	2.4%
NAVAJO	0	1	1	0	2	0.5%
PIMA	0	56	14	2	72	17.0%
PINAL	0	28	6	1	35	8.3%
SANTA CRUZ	0	0	0	0	0	0.0%
YAVAPAI	0	10	0	2	12	2.8%
YUMA	0	6	0	0	6	1.4%
STATEWIDE	0	338	67	18	423	100.0%
% OF TOTAL	0.0%	79.9%	15.8%	4.3%	100.0%	

**TABLE 20**  
**NUMBER OF REPORTS ASSIGNED FOR INVESTIGATION BY TYPE OF MALTREATMENT**  
**BY COUNTY THAT RESULTED IN PROPOSED SUBSTANTIATION FOR PERIOD OF**  
**OCTOBER 1, 2009 THROUGH MARCH 31, 2010**

COUNTY	EMOTIONAL ABUSE	NEGLECT	PHYSICAL ABUSE	SEXUAL ABUSE	TOTAL	% OF TOTAL
APACHE	0	0	0	0	0	0.0%
COCHISE	0	0	0	1	1	0.5%
COCONINO	0	2	2	0	4	2.1%
GILA	0	8	0	0	8	4.2%
GRAHAM	0	0	1	0	1	0.5%
GREENLEE	0	0	0	0	0	0.0%
LA PAZ	0	1	0	0	1	0.5%
MARICOPA	0	101	34	6	141	73.4%
MOHAVE	0	3	1	0	4	2.1%
NAVAJO	0	3	0	0	3	1.6%
PIMA	0	6	0	0	6	3.1%
PINAL	1	12	5	0	18	9.4%
SANTA CRUZ	0	0	0	0	0	0.0%
YAVAPAI	0	4	0	0	4	2.1%
YUMA	0	0	1	0	1	0.5%
STATEWIDE	1	140	44	7	192	100.0%
% OF TOTAL	0.5%	72.9%	22.9%	3.7%	100.0%	

**CHART 13  
NUMBER OF REPORTS ASSIGNED FOR INVESTIGATION BY RISK LEVEL AND  
REPORTING PERIOD THAT RESULTED IN  
SUBSTANTIATION**



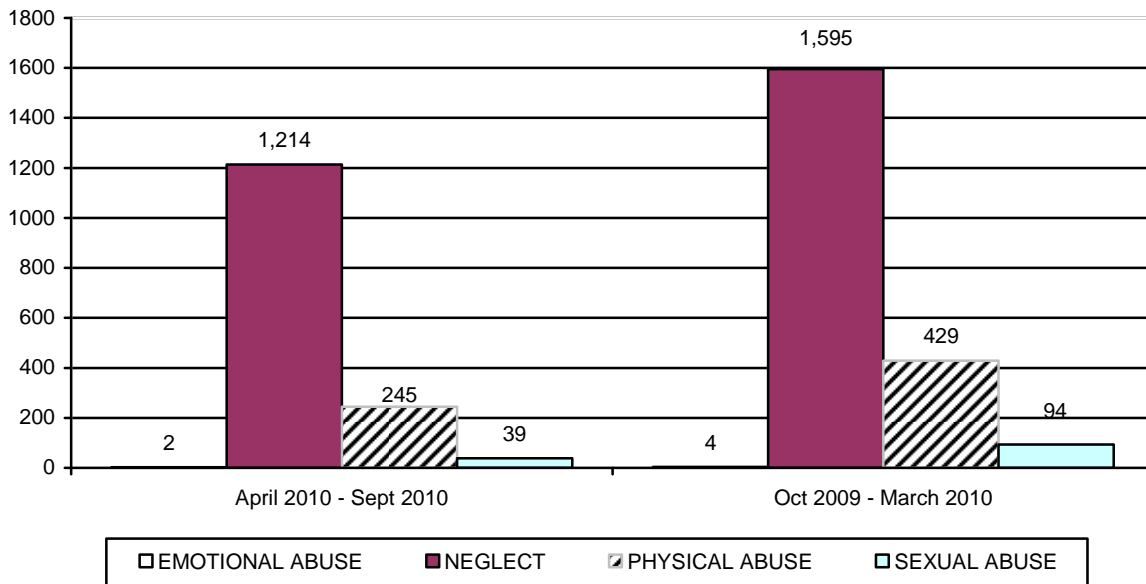
**TABLE 21  
NUMBER OF REPORTS ASSIGNED FOR INVESTIGATION BY RISK LEVEL AND COUNTY  
THAT RESULTED IN SUBSTANTIATION FOR PERIOD OF  
APRIL 1, 2010 THROUGH SEPTEMBER 30, 2010**

COUNTY	HIGH	MODERATE	LOW	POTENTIAL	TOTAL	% OF TOTAL
APACHE	1	0	0	0	1	0.1%
COCHISE	9	4	1	0	14	0.9%
COCONINO	8	9	7	0	24	1.6%
GILA	0	1	4	0	5	0.3%
GRAHAM	0	0	1	0	1	0.1%
GREENLEE	0	0	0	0	0	0.0%
LA PAZ	0	0	0	0	0	0.0%
MARICOPA	359	208	195	80	842	56.2%
MOHAVE	30	16	9	0	55	3.7%
NAVAJO	1	0	3	1	5	0.3%
PIMA	129	145	118	12	404	26.9%
PINAL	26	20	13	5	64	4.3%
SANTA CRUZ	0	0	0	0	0	0.0%
YAVAPAI	18	18	18	2	56	3.7%
YUMA	16	5	6	2	29	1.9%
STATEWIDE	597	426	375	102	1,500	100.0%
% OF TOTAL	39.8%	28.4%	25.0%	6.8%	100.0%	

**TABLE 22  
NUMBER OF REPORTS ASSIGNED FOR INVESTIGATION BY RISK LEVEL AND COUNTY  
THAT RESULTED IN SUBSTANTIATION FOR PERIOD OF  
OCTOBER 1, 2009 THROUGH MARCH 31, 2010**

COUNTY	HIGH	MODERATE	LOW	POTENTIAL	TOTAL	% OF TOTAL
APACHE	0	0	1	1	2	0.1%
COCHISE	19	20	5	0	44	2.1%
COCONINO	8	10	3	0	21	1.0%
GILA	2	3	8	2	15	0.7%
GRAHAM	5	0	0	0	5	0.2%
GREENLEE	0	0	0	0	0	0.0%
LA PAZ	0	2	1	0	3	0.1%
MARICOPA	539	326	233	74	1,172	55.2%
MOHAVE	41	17	13	1	72	3.4%
NAVAJO	5	5	2	0	12	0.6%
PIMA	179	226	171	2	578	27.2%
PINAL	39	21	20	6	86	4.1%
SANTA CRUZ	1	0	0	0	1	0.1%
YAVAPAI	22	25	25	3	75	3.5%
YUMA	21	9	4	2	36	1.7%
STATEWIDE	881	664	486	91	2,122	100.0%
% OF TOTAL	41.5%	31.3%	22.9%	4.3%	100.0%	

**CHART 14  
NUMBER OF REPORTS ASSIGNED FOR INVESTIGATION BY TYPE OF MALTREATMENT  
THAT RESULTED IN SUBSTANTIATION**



**TABLE 23**  
**NUMBER OF REPORTS ASSIGNED FOR INVESTIGATION BY TYPE OF MALTREATMENT**  
**BY COUNTY THAT RESULTED IN SUBSTANTIATION FOR PERIOD OF**  
**APRIL 1, 2010 THROUGH SEPTEMBER 30, 2010**

COUNTY	EMOTIONAL ABUSE	NEGLECT	PHYSICAL ABUSE	SEXUAL ABUSE	TOTAL	% OF TOTAL
APACHE	0	0	1	0	1	0.1%
COCHISE	0	10	2	2	14	0.9%
COCONINO	0	18	4	2	24	1.6%
GILA	0	3	2	0	5	0.3%
GRAHAM	0	0	1	0	1	0.1%
GREENLEE	0	0	0	0	0	0.0%
LA PAZ	0	0	0	0	0	0.0%
MARICOPA	0	688	129	25	842	56.2%
MOHAVE	0	48	7	0	55	3.7%
NAVAJO	0	3	2	0	5	0.3%
PIMA	1	324	72	7	404	26.9%
PINAL	1	49	12	2	64	4.3%
SANTA CRUZ	0	0	0	0	0	0.0%
YAVAPAI	0	46	9	1	56	3.7%
YUMA	0	25	4	0	29	1.9%
STATEWIDE	2	1,214	245	39	1,500	100.0%
% OF TOTAL	0.1%	81.0%	16.3%	2.6%	100.0%	

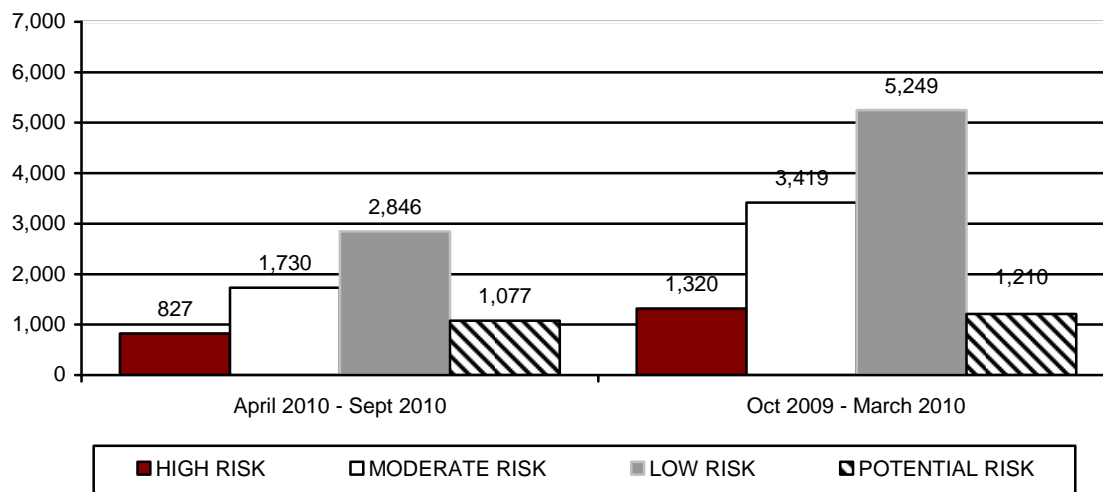
**TABLE 24**  
**NUMBER OF REPORTS ASSIGNED FOR INVESTIGATION BY TYPE OF MALTREATMENT**  
**BY COUNTY THAT RESULTED IN SUBSTANTIATION FOR PERIOD OF**  
**OCTOBER 1, 2009 THROUGH MARCH 31, 2010**

COUNTY	EMOTIONAL ABUSE	NEGLECT	PHYSICAL ABUSE	SEXUAL ABUSE	TOTAL	% OF TOTAL
APACHE	0	2	0	0	2	0.1%
COCHISE	0	31	11	2	44	2.1%
COCONINO	0	10	11	0	21	1.0%
GILA	0	10	4	1	15	0.7%
GRAHAM	0	5	0	0	5	0.2%
GREENLEE	0	0	0	0	0	0.0%
LA PAZ	0	1	2	0	3	0.1%
MARICOPA	1	890	227	54	1,172	55.2%
MOHAVE	0	59	12	1	72	3.4%
NAVAJO	0	5	6	1	12	0.6%
PIMA	2	437	110	29	578	27.2%
PINAL	0	65	19	2	86	4.1%
SANTA CRUZ	0	1	0	0	1	0.1%
YAVAPAI	1	51	20	3	75	3.5%
YUMA	0	28	7	1	36	1.7%
STATEWIDE	4	1,595	429	94	2,122	100.0%
% OF TOTAL	0.2%	75.2%	20.2%	4.4%	100.0%	



The preliminary number of CPS investigations that resulted in an unsubstantiated finding for this reporting period was 6,480. For the prior reporting period, the number of CPS reports that were unsubstantiated was revised from 6,391 to 11,198 to reflect updated information in the CHILDS case management information system. For the prior reporting period, 11.8 percent of unsubstantiated reports were classified as high risk, 30.5 percent as moderate risk, 46.9 percent as low risk, and 10.8 percent as potential risk. Just over one percent of these unsubstantiated reports related to emotional abuse, 57.7 percent to neglect, 35.5 percent to physical abuse, and 5.7 percent to sexual abuse.

**CHART 15  
NUMBER OF REPORTS ASSIGNED FOR INVESTIGATION BY RISK LEVEL AND REPORTING PERIOD THAT RESULTED IN UNSUBSTANTIATION**



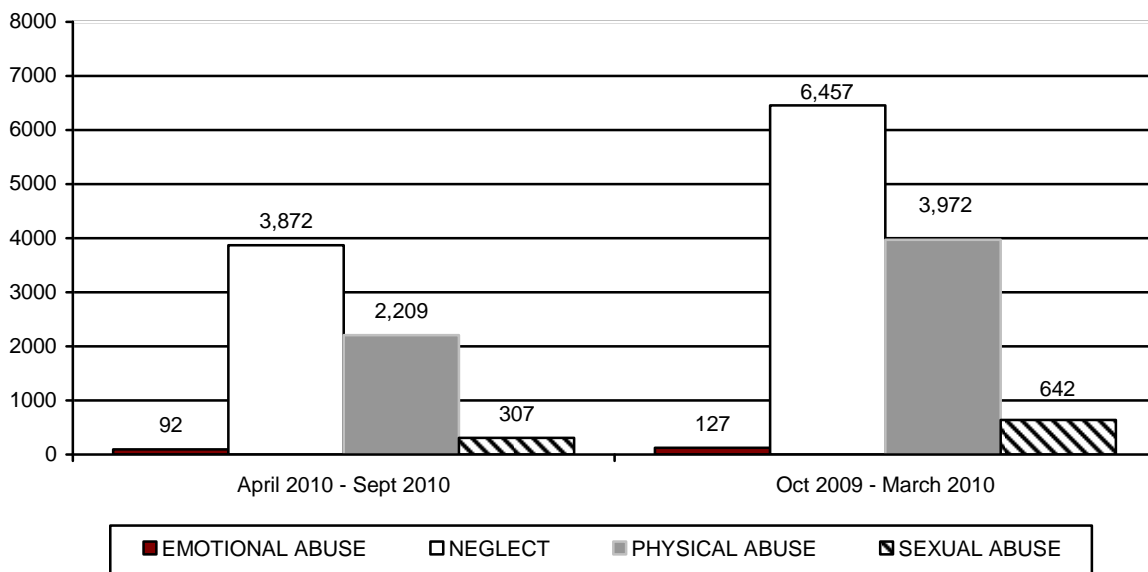
**TABLE 25  
NUMBER OF REPORTS ASSIGNED FOR INVESTIGATION BY RISK LEVEL AND COUNTY THAT RESULTED IN UNSUBSTANTIATION FOR PERIOD OF APRIL 1, 2010 THROUGH SEPTEMBER 30, 2010**

COUNTY	HIGH	MODERATE	LOW	POTENTIAL	TOTAL	% OF TOTAL
APACHE	1	1	4	1	7	0.1%
COCHISE	16	32	67	21	136	2.1%
COCONINO	31	54	85	39	209	3.2%
GILA	7	13	26	8	54	0.8%
GRAHAM	0	1	2	1	4	0.1%
GREENLEE	0	2	0	0	2	<0.1%
LA PAZ	1	0	1	0	2	<0.1%
MARICOPA	579	1,148	1,796	691	4,214	65.0%
MOHAVE	25	61	84	19	189	2.9%
NAVAJO	9	6	10	4	29	0.5%
PIMA	112	254	474	170	1,010	15.6%
PINAL	22	71	117	53	263	4.1%
SANTA CRUZ	4	1	2	1	8	0.1%
YAVAPAI	13	64	126	44	247	3.8%
YUMA	7	22	52	25	106	1.6%
STATEWIDE	827	1,730	2,846	1,077	6,480	100.0%
% OF TOTAL	12.8%	26.7%	43.9%	16.6%	100.0%	

**TABLE 26  
NUMBER OF REPORTS ASSIGNED FOR INVESTIGATION BY RISK LEVEL AND COUNTY  
THAT RESULTED IN UNSUBSTANTIATION FOR PERIOD OF  
OCTOBER 1, 2009 THROUGH MARCH 31, 2010**

COUNTY	HIGH	MODERATE	LOW	POTENTIAL	TOTAL	% OF TOTAL
APACHE	6	8	8	1	23	0.2%
COCHISE	23	62	92	14	191	1.7%
COCONINO	29	74	96	35	234	2.1%
GILA	7	8	20	7	42	0.4%
GRAHAM	7	21	13	0	41	0.4%
GREENLEE	0	2	3	2	7	0.1%
LA PAZ	3	9	10	2	24	0.2%
MARICOPA	894	2,201	3,389	770	7,254	64.7%
MOHAVE	26	127	156	37	346	3.1%
NAVAJO	16	34	30	10	90	0.8%
PIMA	168	472	900	187	1,727	15.4%
PINAL	77	196	264	65	602	5.4%
SANTA CRUZ	3	5	5	3	16	0.1%
YAVAPAI	32	116	158	52	358	3.2%
YUMA	29	84	105	25	243	2.2%
STATEWIDE	1,320	3,419	5,249	1,210	11,198	100.0%
% OF TOTAL	11.8%	30.5%	46.9%	10.8%	100.0%	

**CHART 16  
NUMBER OF REPORTS ASSIGNED FOR INVESTIGATION BY TYPE OF MALTREATMENT  
THAT RESULTED IN UNSUBSTANTIATION BY REPORTING PERIOD**



**TABLE 27**  
**NUMBER OF REPORTS ASSIGNED FOR INVESTIGATION BY TYPE OF MALTREATMENT**  
**BY COUNTY THAT RESULTED IN UNSUBSTANTIATION FOR PERIOD OF**  
**APRIL 1, 2010 THROUGH SEPTEMBER 30, 2010**

COUNTY	EMOTIONAL ABUSE	NEGLECT	PHYSICAL ABUSE	SEXUAL ABUSE	TOTAL	% OF TOTAL
APACHE	0	3	4	0	7	0.1%
COCHISE	4	85	44	3	136	2.1%
COCONINO	1	130	68	10	209	3.2%
GILA	0	35	14	5	54	0.8%
GRAHAM	0	3	1	0	4	0.1%
GREENLEE	0	1	0	1	2	<0.1%
LA PAZ	0	2	0	0	2	<.01%
MARICOPA	55	2,496	1,464	199	4,214	65.0%
MOHAVE	0	126	54	9	189	2.9%
NAVAJO	0	21	5	3	29	0.5%
PIMA	19	605	342	44	1,010	15.6%
PINAL	4	159	84	16	263	4.1%
SANTA CRUZ	0	5	2	1	8	0.1%
YAVAPAI	7	140	90	10	247	3.8%
YUMA	2	61	37	6	106	1.6%
STATEWIDE	92	3,872	2,209	307	6,480	100.0%
% OF TOTAL	1.4%	59.8%	34.1%	4.7%	100.0%	

**TABLE 28**  
**NUMBER OF REPORTS ASSIGNED FOR INVESTIGATION BY TYPE OF MALTREATMENT**  
**BY COUNTY THAT RESULTED IN UNSUBSTANTIATION FOR PERIOD OF**  
**OCTOBER 1, 2009 THROUGH MARCH 31, 2010**

COUNTY	EMOTIONAL ABUSE	NEGLECT	PHYSICAL ABUSE	SEXUAL ABUSE	TOTAL	% OF TOTAL
APACHE	0	12	10	1	23	0.2%
COCHISE	2	127	60	2	191	1.7%
COCONINO	0	131	90	13	234	2.1%
GILA	0	21	19	2	42	0.4%
GRAHAM	0	29	7	5	41	0.4%
GREENLEE	0	2	4	1	7	0.1%
LA PAZ	1	14	6	3	24	0.2%
MARICOPA	76	4,146	2,611	421	7,254	64.7%
MOHAVE	4	198	131	13	346	3.1%
NAVAJO	0	57	28	5	90	0.8%
PIMA	31	974	622	100	1,727	15.4%
PINAL	7	341	216	38	602	5.4%
SANTA CRUZ	0	8	7	1	16	0.1%
YAVAPAI	5	234	96	23	358	3.2%
YUMA	1	163	65	14	243	2.2%
STATEWIDE	127	6,457	3,972	642	11,198	100.0%
% OF TOTAL	1.1%	57.7%	35.5%	5.7%	100.0%	

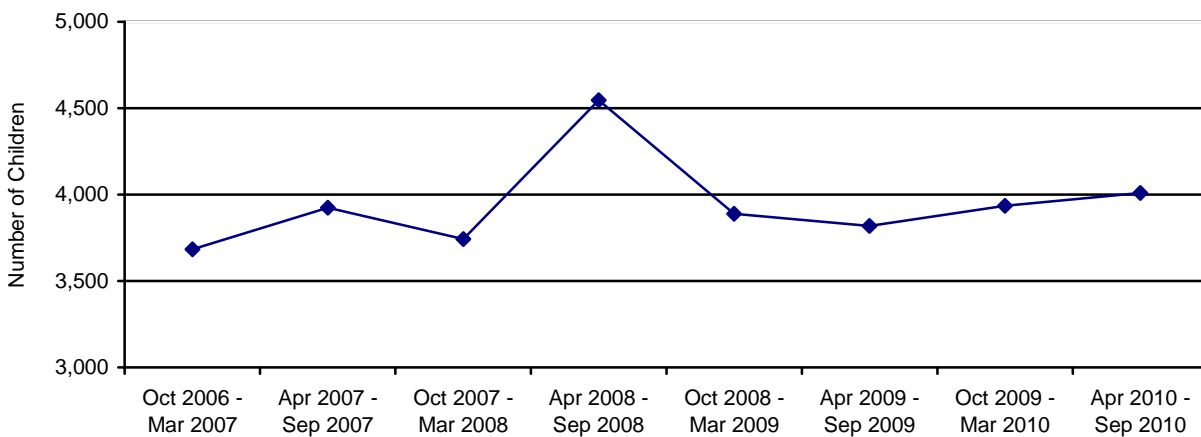
**SAFE HAVEN INFANTS**

There were no newborn infants delivered to Safe Haven providers during the April 2010 – September 2010 reporting period. This compares to no infants being delivered to Safe Haven providers during the October 2009 – March 2010 reporting period.

**CHILDREN ENTERING OUT-OF-HOME CARE**

During this reporting period, 4,010 children entered care as compared to 3,936 children for the October 2009 through March 2010 reporting period. Chart 17 displays children entering out-of-home care by reporting period.

**CHART 17  
TOTAL CHILDREN ENTERING OUT-OF-HOME CARE BY REPORTING PERIOD**



The number of children entering out-of-home placement through voluntary foster care agreements for this reporting period was 135, which represents 3.4 percent of the children entering care this reporting period. Table 29 shows the number of children entering out-of-home care through voluntary placements for the current reporting period by county. Voluntary foster care may be provided when the parents or legal guardians of a child have requested such assistance and have signed a legally binding written agreement, not to exceed 90 days, for the temporary placement of the child in foster care while risk factors are addressed to enable the child to live safely at home. A voluntary foster care agreement may be utilized only when the circumstances that brought the child into foster care are likely to be remedied within the 90 day period of time. A.R.S. §8-806 authorizes the Department to provide voluntary foster care placement for children for a period not to exceed 90 days and no more than twice within 24 consecutive months.

**TABLE 29**  
**NUMBER OF CHILDREN ENTERING OUT-OF-HOME CARE BY COUNTY WHO ARE**  
**VOLUNTARY PLACEMENTS FOR CHILDREN UNDER THE AGE OF EIGHTEEN FOR THE**  
**PERIOD OF APRIL 1, 2010 THROUGH SEPTEMBER 30, 2010**

COUNTY	NUMBER OF CHILDREN REMOVED	% OF TOTAL REMOVALS	NUMBER OF CHILDREN ENTERING OUT-OF-HOME CARE UNDER THE AGE OF EIGHTEEN WHO ARE VOLUNTARY PLACEMENTS	% OF CHILDREN REMOVED WHO ARE VOLUNTARY PLACEMENTS
APACHE	12	0.3%	2	1.5%
COCHISE	67	1.7%	9	6.7%
COCONINO	64	1.6%	11	8.2%
GILA	19	0.5%	2	1.5%
GRAHAM	9	0.2%	0	0.0%
GREENLEE	1	<0.1%	0	0.0%
LA PAZ	5	0.1%	0	0.0%
MARICOPA	2,203	54.8%	62	45.8%
MOHAVE	135	3.4%	0	0.0%
NAVAJO	60	1.5%	4	3.0%
PIMA	1,002	25.0%	28	20.7%
PINAL	267	6.7%	4	3.0%
SANTA CRUZ	12	0.3%	1	0.7%
YAVAPAI	115	2.9%	11	8.2%
YUMA	39	1.0%	1	0.7%
STATEWIDE	4,010	100.0%	135	100.0%

**TABLE 30**  
**NUMBER OF CHILDREN ENTERING OUT-OF-HOME CARE BY COUNTY WHO ARE**  
**VOLUNTARY PLACEMENTS FOR CHILDREN UNDER THE AGE OF EIGHTEEN FOR THE**  
**PERIOD OF OCTOBER 1, 2009 THROUGH MARCH 31, 2010**

COUNTY	NUMBER OF CHILDREN REMOVED	% OF TOTAL REMOVALS	NUMBER OF CHILDREN ENTERING OUT-OF-HOME CARE UNDER THE AGE OF EIGHTEEN WHO ARE VOLUNTARY PLACEMENTS	% OF CHILDREN REMOVED WHO ARE VOLUNTARY PLACEMENTS
APACHE	9	0.2%	1	0.8%
COCHISE	71	1.8%	0	0.0%
COCONINO	37	0.9%	2	1.6%
GILA	43	1.1%	1	0.8%
GRAHAM	19	0.5%	0	0.0%
GREENLEE	12	0.3%	0	0.0%
LA PAZ	3	0.1%	0	0.0%
MARICOPA	2,145	54.6%	60	48.0%
MOHAVE	117	3.0%	3	2.4%
NAVAJO	48	1.2%	4	3.2%
PIMA	1,059	26.9%	40	32.0%
PINAL	212	5.4%	1	0.8%
SANTA CRUZ	13	0.3%	0	0.0%
YAVAPAI	107	2.7%	8	6.4%
YUMA	41	1.0%	5	4.0%
STATEWIDE	3,936	100.0%	125	100.0%

The Department recognizes that the unwarranted re-entry into foster care is something to be avoided and continues to take steps to ensure that these re-entries are in the best interests of the child and family. In 2005, the Department began collaborating with the Chapin Hall Center for Children on a measure to aid the Department in identifying key factors in re-entry into foster care. This will enable the Department to utilize cohort data and help to identify if changes are needed in policy or practices.

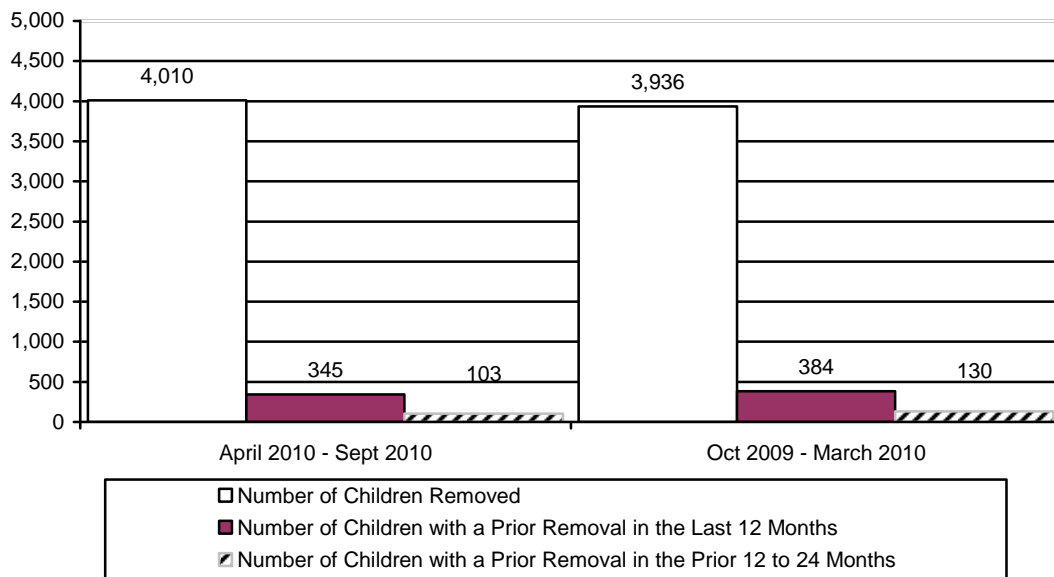
**TABLE 31  
NUMBER OF CHILDREN ENTERING OUT-OF-HOME CARE BY COUNTY FOR THE  
PERIOD OF APRIL 1, 2010 THROUGH SEPTEMBER 30, 2010**

COUNTY	NUMBER OF CHILDREN REMOVED	% OF TOTAL REMOVALS	NUMBER OF CHILDREN WITH A PRIOR REMOVAL IN THE LAST 12 MONTHS	% OF CHILDREN WITH A PRIOR REMOVAL IN THE LAST 12 MONTHS	NUMBER OF CHILDREN WITH A REMOVAL IN THE PRIOR 12 TO 24 MONTHS	% OF CHILDREN WITH A PRIOR REMOVAL IN THE PRIOR 12 TO 24 MONTHS
APACHE	12	0.3%	0	0.0%	0	0.0%
COCHISE	67	1.7%	5	7.5%	0	0.0%
COCONINO	64	1.6%	2	3.1%	0	0.0%
GILA	19	0.5%	3	15.8%	8	42.1%
GRAHAM	9	0.2%	3	33.3%	0	0.0%
GREENLEE	1	<0.1%	1	100.0%	0	0.0%
LA PAZ	5	0.1%	0	0.0%	0	0.0%
MARICOPA	2,203	54.8%	178	8.1%	47	2.1%
MOHAVE	135	3.4%	8	5.9%	4	3.0%
NAVAJO	60	1.5%	1	1.7%	0	0.0%
PIMA	1,002	25.0%	114	11.4%	32	3.2%
PINAL	267	6.7%	15	5.6%	11	4.1%
SANTA CRUZ	12	0.3%	1	8.3%	0	0.0%
YAVAPAI	115	2.9%	11	9.6%	1	0.9%
YUMA	39	1.0%	3	7.7%	0	0.0%
STATEWIDE	4,010	100.0%	345	8.6%	103	2.6%

**TABLE 32**  
**NUMBER OF CHILDREN ENTERING OUT-OF-HOME CARE BY COUNTY FOR THE PERIOD OF OCTOBER 1, 2009 THROUGH MARCH 31, 2010**

COUNTY	NUMBER OF CHILDREN REMOVED	% OF TOTAL REMOVALS	NUMBER OF CHILDREN WITH A PRIOR REMOVAL IN THE LAST 12 MONTHS	% OF CHILDREN WITH A PRIOR REMOVAL IN THE LAST 12 MONTHS	NUMBER OF CHILDREN WITH A REMOVAL IN THE PRIOR 12 TO 24 MONTHS	% OF CHILDREN WITH A PRIOR REMOVAL IN THE PRIOR 12 TO 24 MONTHS
APACHE	9	0.2%	0	0.0%	0	0.0%
COCHISE	71	1.8%	4	5.6%	0	0.0%
COCONINO	37	0.9%	4	10.8%	0	0.0%
GILA	43	1.1%	3	7.0%	8	18.6%
GRAHAM	19	0.5%	3	15.8%	0	0.0%
GREENLEE	12	0.3%	1	8.3%	0	0.0%
LA PAZ	3	0.1%	0	0.0%	0	0.0%
MARICOPA	2,145	54.6%	202	9.4%	55	2.6%
MOHAVE	117	3.0%	6	5.1%	4	3.4%
NAVAJO	48	1.2%	1	2.1%	5	10.4%
PIMA	1,059	26.9%	128	12.1%	43	4.1%
PINAL	212	5.4%	17	8.0%	13	6.1%
SANTA CRUZ	13	0.3%	1	7.7%	0	0.0%
YAVAPAI	107	2.7%	11	10.3%	2	1.9%
YUMA	41	1.0%	3	7.3%	0	0.0%
STATEWIDE	3,936	100.0%	384	9.8%	130	3.3%

**CHART 18**  
**NUMBER OF CHILDREN ENTERING OUT-OF-HOME CARE BY REPORTING PERIOD**



**CHILDREN IN OUT-OF-HOME CARE**

On September 30, 2010, there were 10,514 children in out-of-home care as compared to 10,207 children on March 31, 2010, an increase of 307 children. During this reporting period, 8,628 children or 82.1 percent were placed in family settings either with relatives or in foster homes. This compares to 8,437 or 82.6 percent of the children in the prior reporting period.

**CHART 19  
NUMBER OF CHILDREN IN OUT-OF-HOME CARE ON THE LAST DAY OF THE REPORTING PERIOD BY REPORTING PERIOD**

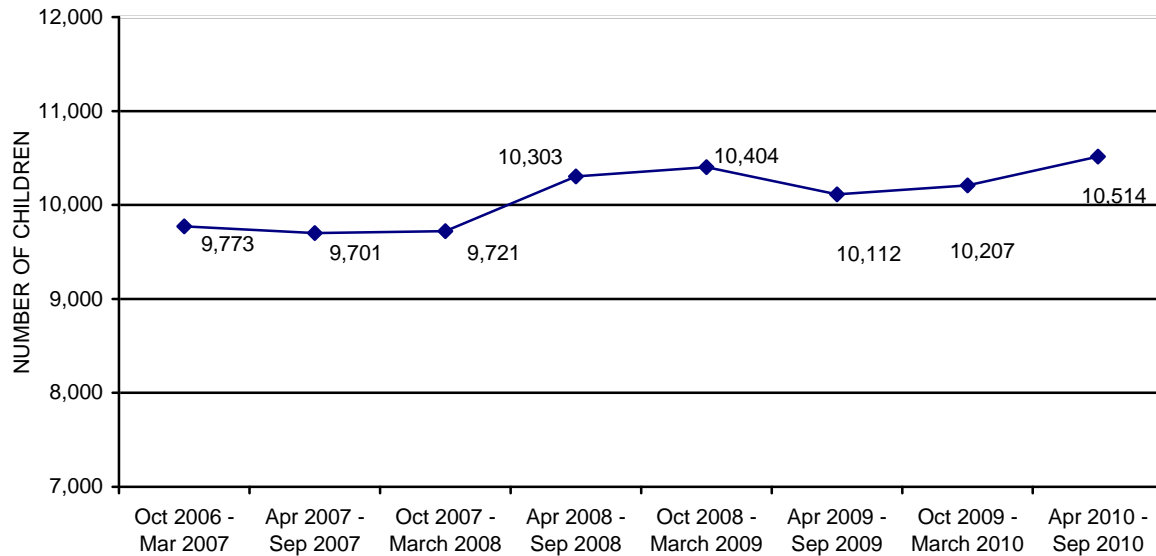
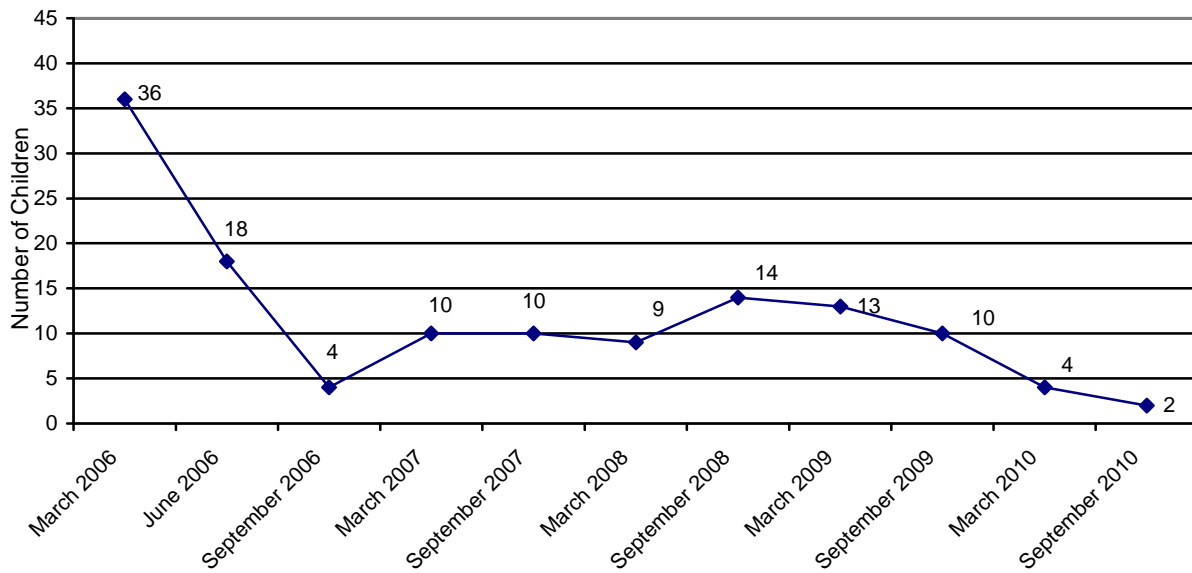


Chart 20 displays the decrease in the number of young children ages 0-6 placed in group homes. Comparing June 2006 to September 2010, the number of young children in group homes decreased by 16 children or 88.9 percent.

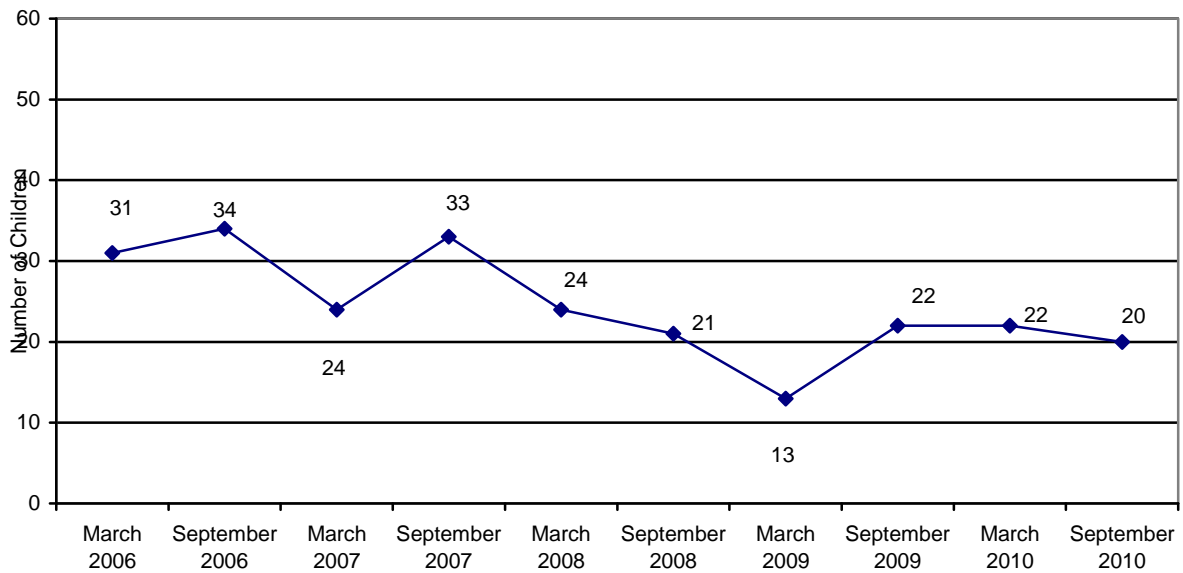
Chart 21 displays the decrease in the number of young children ages 0-3 placed in shelter care. Comparing March 2006 to September 2010, the number of young children in shelters decreased by 11 children or 35.5 percent. Chart 22 shows that the average length of time in shelter care has increased slightly; comparing September 2009 to September 2010, the average length of stay in shelter increased from 111.7 to 123.0 days, an increase of 11.3 days or 10.1 percent.



**CHART 20**  
**THE NUMBER OF CHILDREN IN GROUP HOMES AGES 0 TO 6<sup>3</sup>**

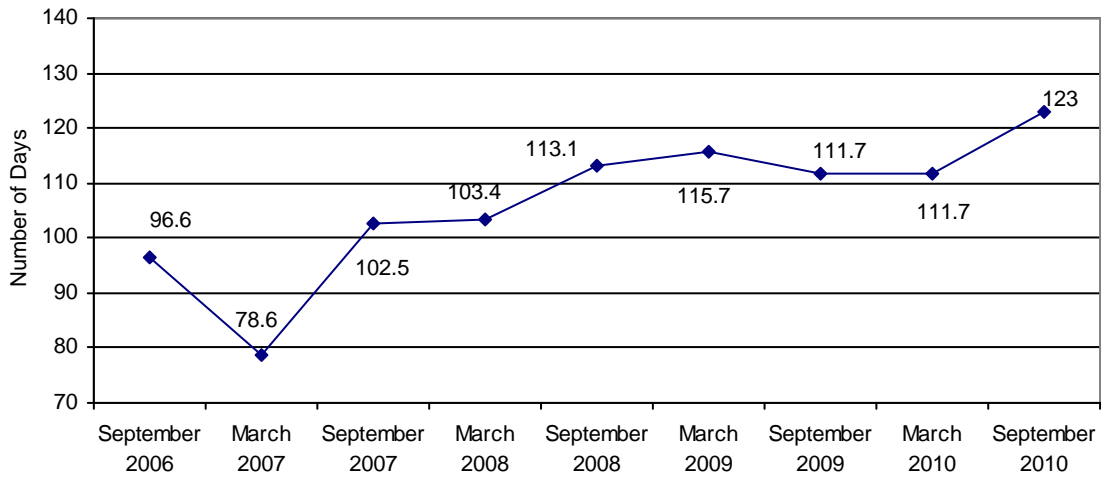


**CHART 21**  
**THE NUMBER OF CHILDREN IN SHELTER CARE AGES 0 TO 3**



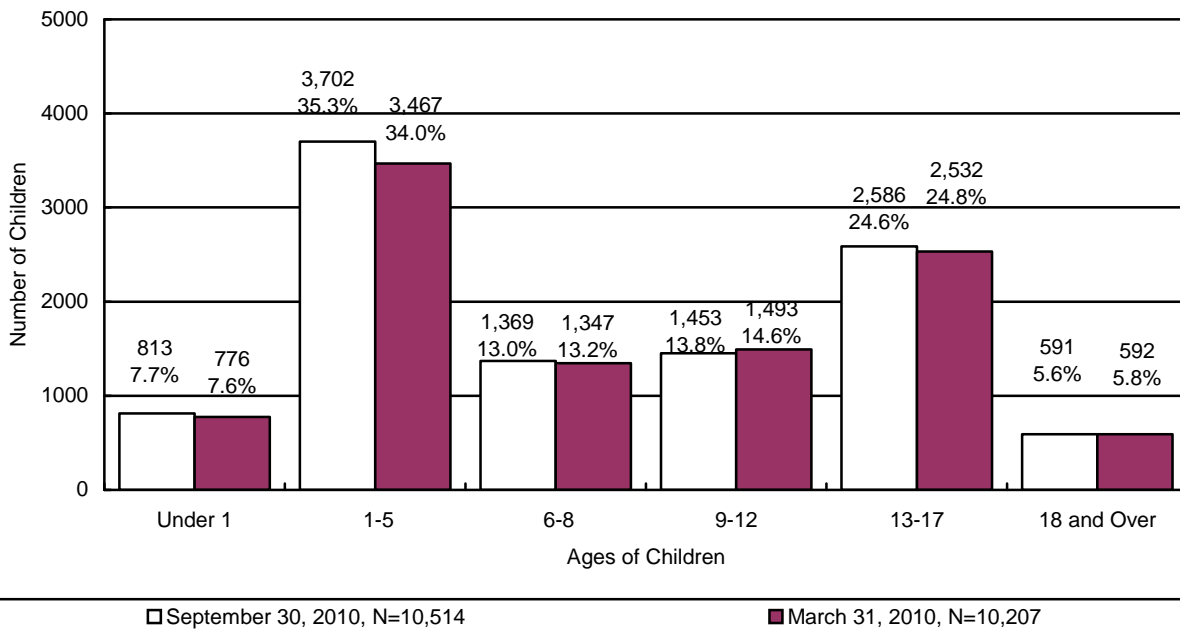
<sup>3</sup> Excludes infants placed with their mothers and children placed in foster home group models.

**CHART 22**  
**THE AVERAGE LENGTH OF STAY IN A SHELTER PLACEMENT FOR CHILDREN AGES 0 TO 3 IN A SHELTER PLACEMENT ON THE LAST DAY OF THE REPORTING PERIOD**

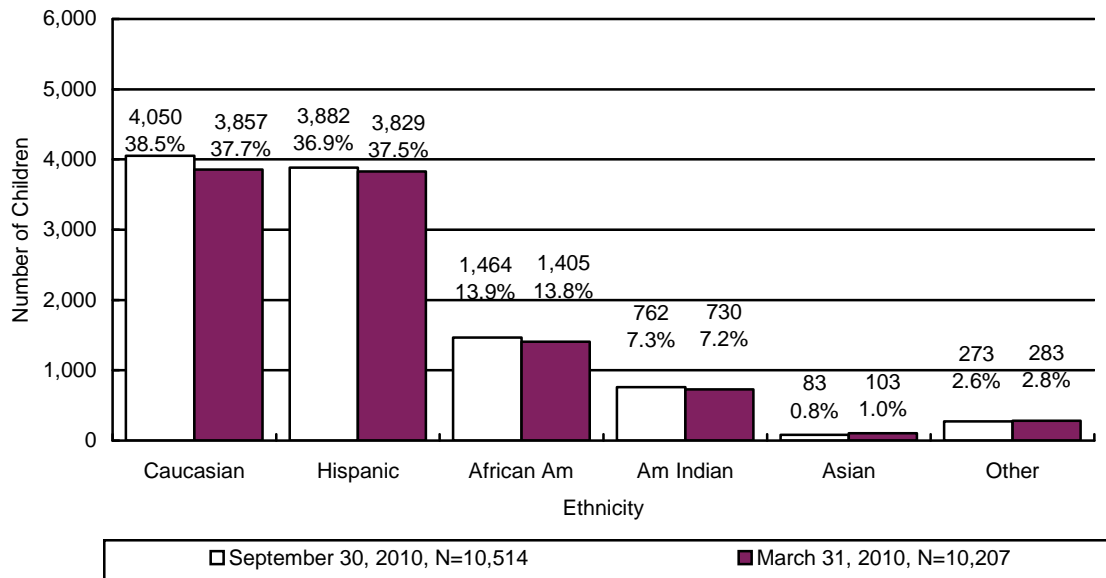


The majority of children in out-of-home care fall within the 1-5 age range (35.3 percent) and the 13-17 age range (24.6 percent). The majority of children in out-of-home care are either Caucasian (38.5 percent) or Hispanic (36.9 percent), followed by African American at 13.9 percent.

**CHART 23**  
**THE NUMBER OF CHILDREN IN OUT-OF-HOME CARE BY AGE**

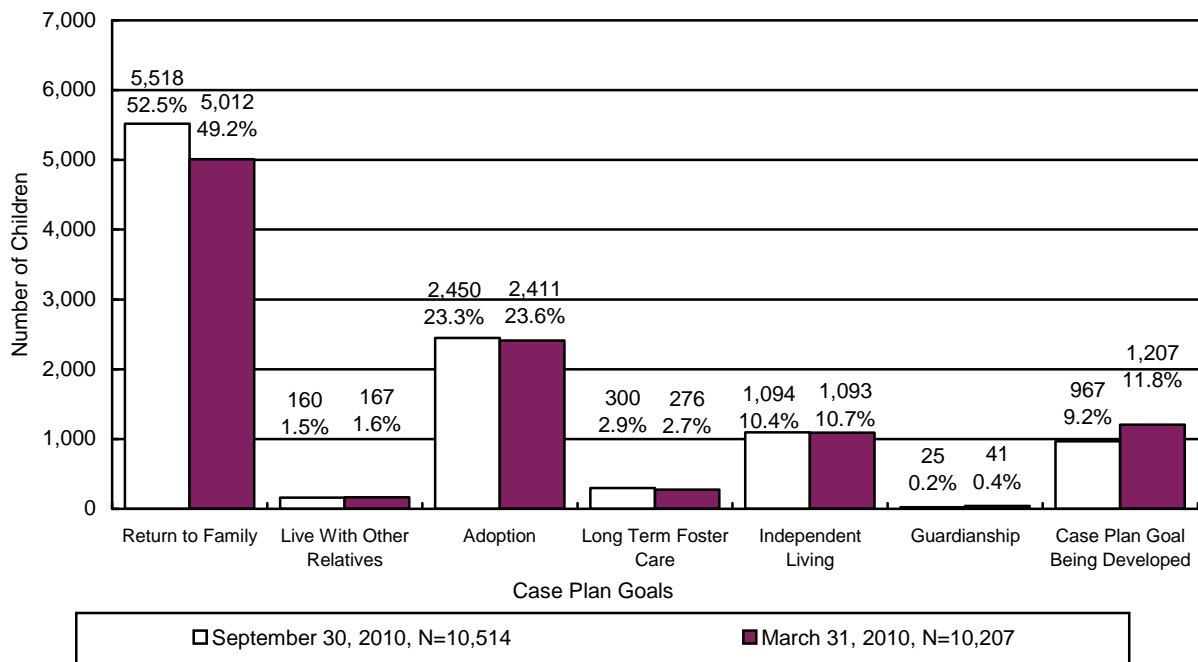


**CHART 24**  
**THE NUMBER OF CHILDREN IN OUT-OF-HOME CARE BY ETHNICITY**

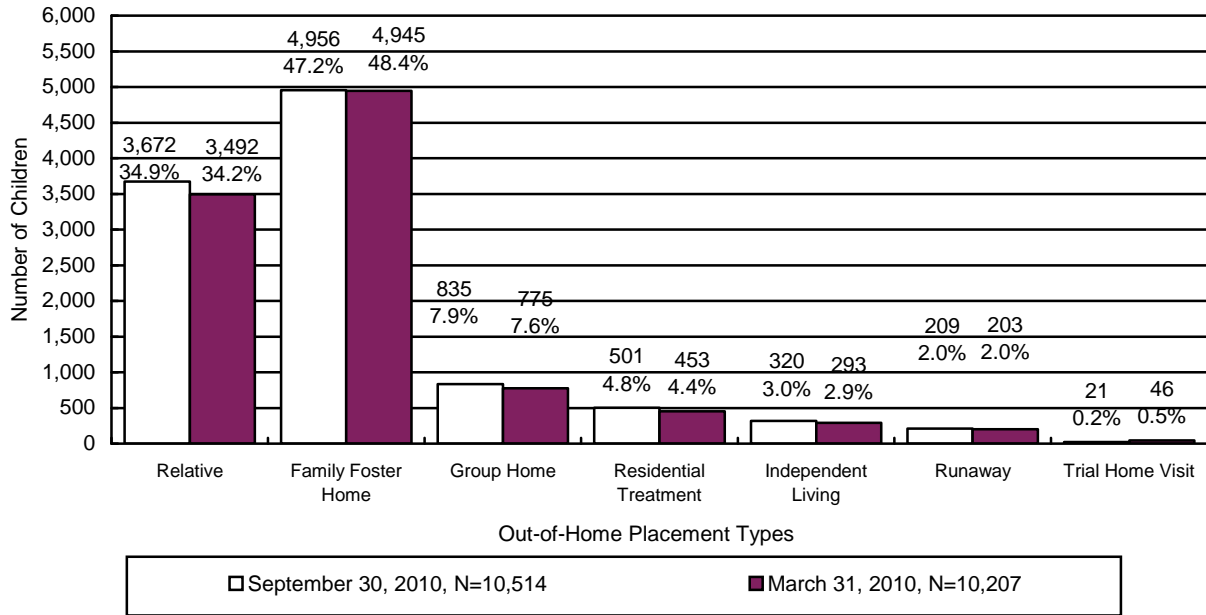


For 52.5 percent of the children in out-of-home care, family reunification remains the primary case plan goal. This is followed by: adoption, 23.3 percent; independent living, 10.4 percent; long-term foster care, 2.9 percent; live with other relative, 1.5 percent; and, guardianship at 0.2 percent. For the remaining 9.2 percent of the children, the case plan goal is in the process of development.

**CHART 25**  
**THE NUMBER OF CHILDREN IN OUT-OF-HOME CARE BY CASE PLAN GOAL**



**CHART 26**  
**THE NUMBER OF CHILDREN IN OUT-OF-HOME CARE BY PLACEMENT TYPE**



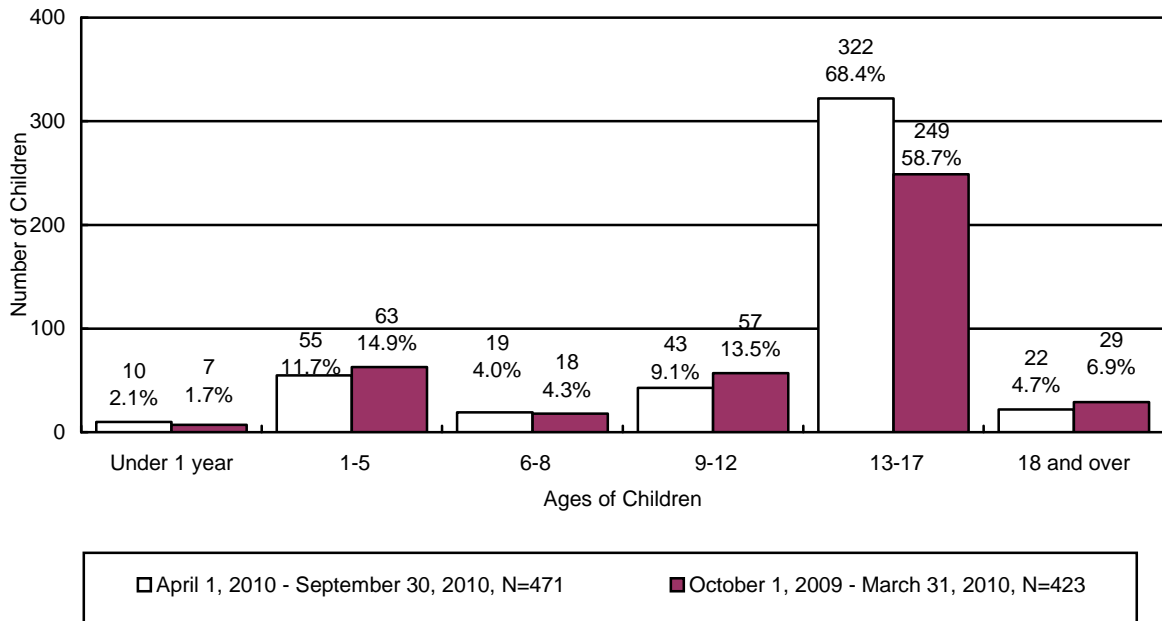
**TABLE 33  
THE NUMBER OF CHILDREN IN OUT-OF-HOME CARE BY PLACEMENT TYPE AND AGE**

	RELATIVE	FAMILY FOSTER	GROUP HOME	RESIDENTIAL TREATMENT <sup>4</sup>	INDEPENDENT LIVING	RUNAWAY	TRIAL HOME VISIT	TOTAL	% OF TOTAL
<b>UNDER 1</b>	270	532	3	6	0	0	2	813	7.7%
<b>1</b>	427	501	3	3	0	0	0	934	8.9%
<b>2</b>	398	435	2	3	0	1	0	839	8.0%
<b>3</b>	335	392	3	8	0	0	2	740	7.0%
<b>4</b>	281	333	0	3	0	0	1	618	5.9%
<b>5</b>	268	294	3	6	0	0	0	571	5.4%
<b>6</b>	218	254	4	4	0	0	1	481	4.6%
<b>7</b>	200	238	4	5	0	0	2	449	4.3%
<b>8</b>	200	221	9	7	0	0	2	439	4.2%
<b>9</b>	175	221	8	1	0	0	1	406	3.9%
<b>10</b>	137	182	18	8	0	0	0	345	3.3%
<b>11</b>	143	177	13	10	0	0	3	346	3.3%
<b>12</b>	116	190	43	6	0	0	1	356	3.4%
<b>13</b>	101	200	50	26	0	3	0	380	3.6%
<b>14</b>	94	191	104	46	0	11	0	446	4.2%
<b>15</b>	108	190	116	65	0	29	1	509	4.8%
<b>16</b>	90	174	189	80	0	46	2	581	5.5%
<b>17</b>	88	178	211	88	12	92	1	670	6.4%
<b>18 AND OLDER</b>	23	53	52	126	308	27	2	591	5.6%
<b>TOTAL</b>	3,672	4,956	835	501	320	209	21	10,514	100.0%
<b>% OF TOTAL</b>	34.9%	47.2%	7.9%	4.8%	3.0%	2.0%	0.2%	100.0%	

<sup>4</sup> This category includes shelter, detention, and hospital placement types.

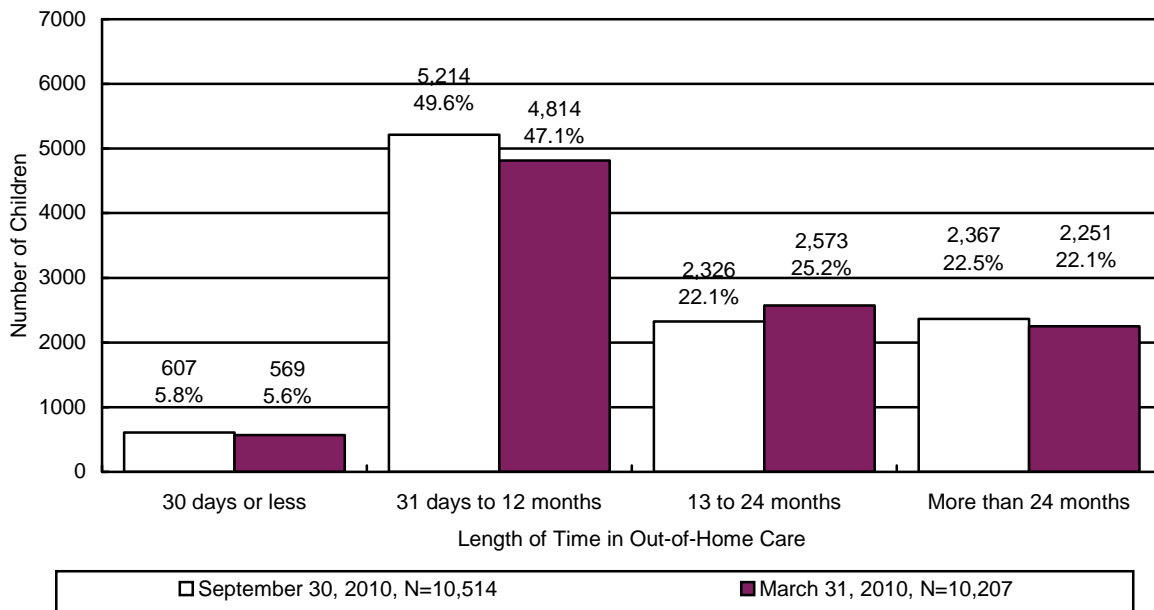
During the reporting period 471 children remained in a shelter or receiving home for more than 21 consecutive days. Chart 27 displays children in shelter greater than 21 days for the period of April 1, 2010 through September 30, 2010 and shows that 406 or 86.2 percent of the children were six years of age or older. In addition, 10 or 2.1 percent of the children were under one year old.

**CHART 27**  
**NUMBER AND PERCENTAGE OF CHILDREN IN SHELTER OR RECEIVING HOMES FOR MORE THAN 21 CONSECUTIVE DAYS BY AGE OF CHILD<sup>5</sup>**



<sup>5</sup> The chart displays children who spent more than 21 days in shelter during the period. This number differs from the other out-of-home charts as they display children in out-of-home care on the last day of the reporting period.

**CHART 28**  
**THE NUMBER OF CHILDREN IN OUT-OF-HOME CARE BY LENGTH OF TIME IN CARE**



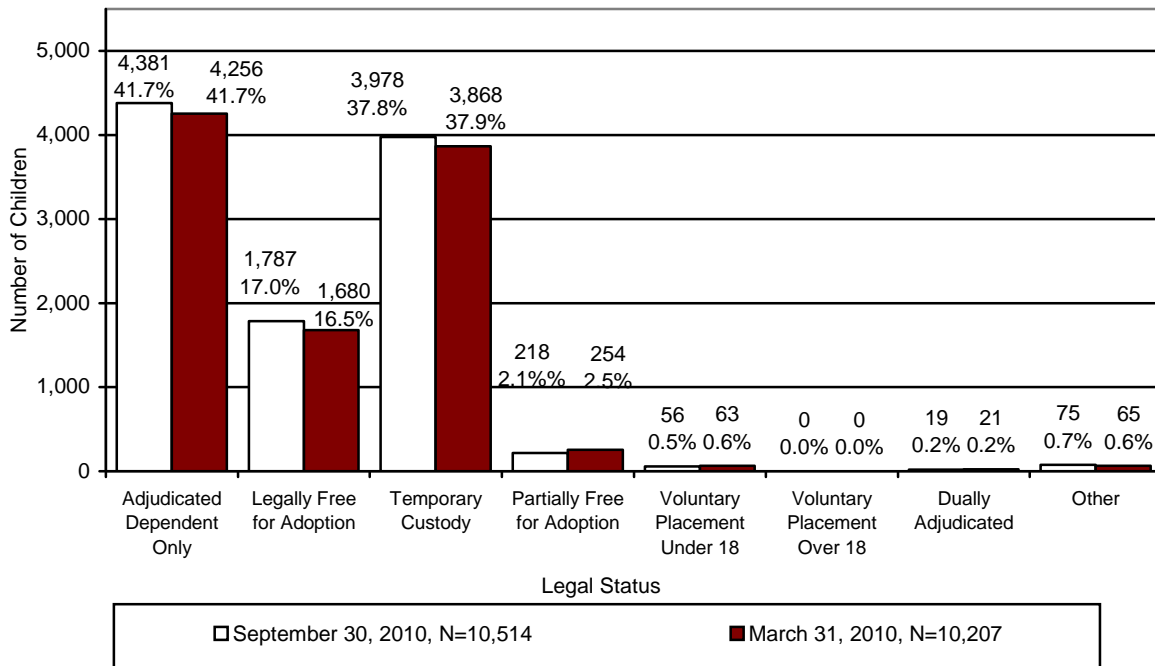
For the children in out-of-home care on September 30, 2010 the average number of placements was 2.7, the median number of placements was 2.0, and the range for the number of placements was 1 to 40 placements during their current removal episode.

**TABLE 34**  
**PLACEMENT INFORMATION FOR CHILDREN IN OUT-OF-HOME CARE ON SEPTEMBER 30, 2010**

	Placements
<b>Average</b>	2.7
<b>Median</b>	2.0
<b>Range Minimum</b>	1
<b>Range Maximum</b>	40 <sup>6</sup>

<sup>6</sup> Some children are so damaged by the severity of the abuse they have suffered that they become unable to form meaningful relationships or to respond to services. These children tend to go through multiple placements with numerous individuals and agencies.

**CHART 29  
CHILDREN IN OUT-OF-HOME CARE BY LEGAL STATUS**

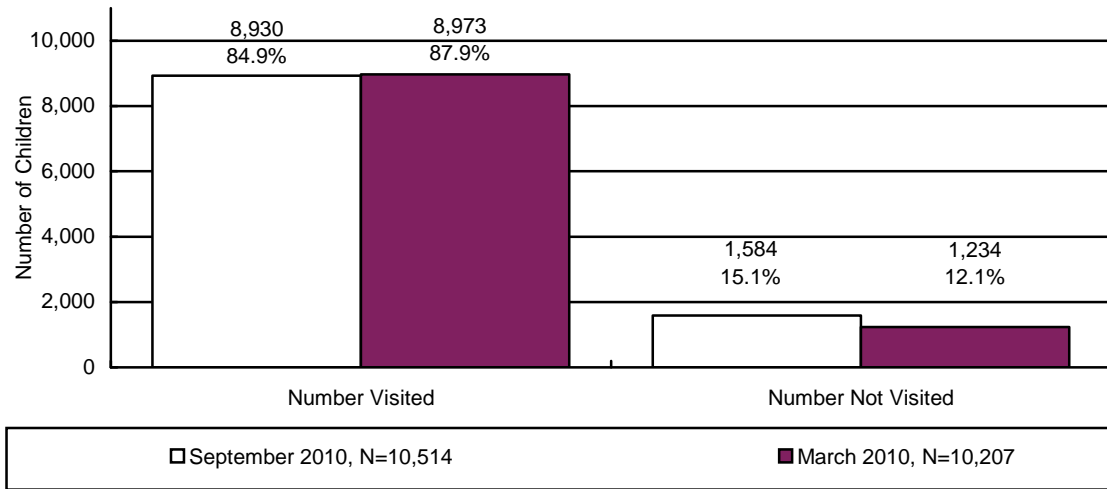


At the end of the reporting period there were 10,514 children in out-of-home care who required visitation. Of these children, visitation was accurately documented in the automated system for 8,930 children. As displayed in Chart 30, during this reporting period, the percent of children receiving required visits by their CPS specialists decreased by 3.0 percent to 84.9 percent.

The required child visitation is performed monthly by DES case managers, contracted case managers, and/or other professionals as approved by a supervisor or as established by policy. The Department has verified that more children received the required visitation than is indicated in Chart 30. This information is clearly documented in the automated case notes. However, the Department is unable to compile and tabulate data based solely upon case note text. The Department continues to issue instructions to all direct service staff regarding the system requirements for capturing all visitations. A child was deemed to have received the required visitation if the child received the visitation during the last month of the reporting period.

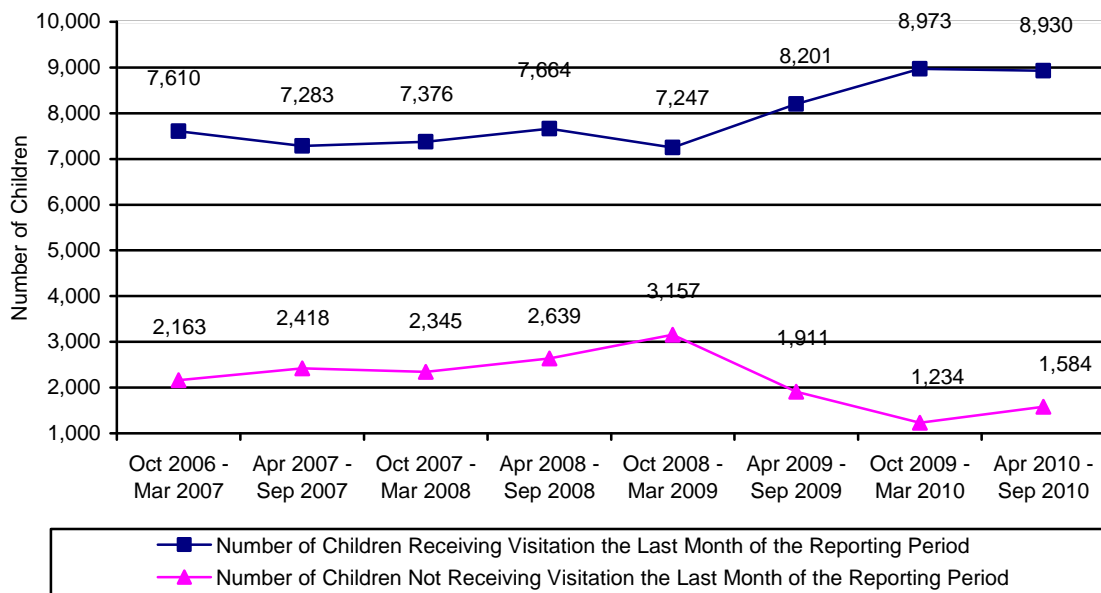


**CHART 30  
THE NUMBER AND PERCENTAGE OF CHILDREN WHO RECEIVED THE REQUIRED VISITATION**



According to Administration for Children, Youth and Families policy, case managers shall have face-to-face contact with all parents at least once a month, including any alleged parents and parents residing outside of the child’s home where the case plan goal is family reunification or remain with family. During the reporting period, there were 1,999 parents who had a child with the case plan goal of return home. Of those parents requiring visitation, 1,128 or 56.4 percent received the required visitation. The 56.4 percent visitation rate does not reflect attempted visitation where contact with the parent(s) did not take place.

**CHART 31  
NUMBER OF CHILDREN RECEIVING AND NOT RECEIVING VISITATION BY REPORTING PERIOD**



**FOSTER HOMES**

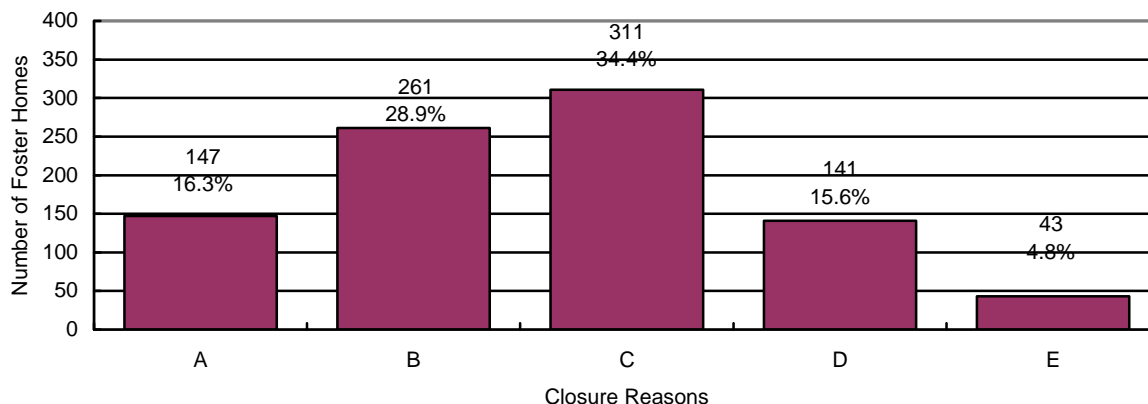
As of September 30, 2010, there were 3,747<sup>7</sup> licensed foster homes with 8,693 spaces available for Administration for Children, Youth and Families placements. Licensed foster homes include family foster homes, professional family foster homes, respite foster homes, receiving foster homes, and developmentally disabled homes with DCYF children placed in them.

Foster home licenses specify the age range, gender and maximum number of children that can be placed in a home. Foster parents, in consultation with the licensing worker, decide the type of physical, behavioral, and psychological needs of children they can effectively parent based upon their own skill level, experiences, and desires.

As of September 30, 2010, there were 2,086 unused spaces within these foster homes. Of the unused spaces, a match between the available spaces and children’s needs was not possible.

During the reporting period, 718 new homes were licensed to provide foster care and 903 homes left the system. This compares to 560 new homes being licensed and 582 homes leaving the system for the period covering October 2009 through March 2010. The chart below gives the reasons for foster home closures for the period of April 1, 2010 through September 30, 2010.

**CHART 32  
REASON FOR FOSTER HOME CLOSURE FOR THE PERIOD OF  
APRIL 1, 2010 THROUGH SEPTEMBER 30, 2010**



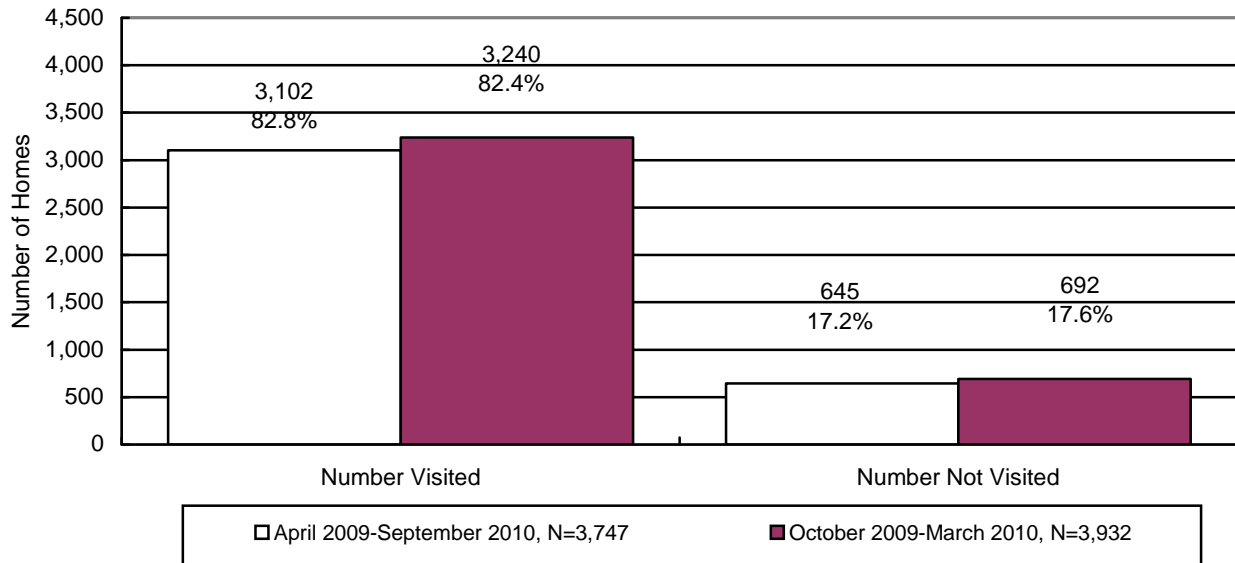
N=903

- A = Adoption / Guardianship Finalized**
- B = Failed to Renew**
- C = Family Request**
- D = Other**
- E = Relocation**

<sup>7</sup> The number of homes cited in this report differs from the official number cited by the Office of Licensing, Certification & Regulation (OLCR) due to the fact that the Division for Children, Youth & Families utilizes foster homes that are licensed for developmental disabilities, licensed by the tribes, etc.

During the reporting period, there were 3,747 foster homes that required visitation. Of the 3,747 foster homes requiring visitation, 3,102 foster homes received their required visitation. This compares to 3,240 or 82.4 percent of the foster homes that received the required visitation for the period October 2009 through March 2010. The Department believes that more foster homes received the required visitation than is indicated in the chart below. The underreporting of foster home visitation is attributable to the lack of automation being used in reporting the foster home visitation process. The Department recognizes this as a problem and is working to correct this issue.

**CHART 33  
THE NUMBER AND PERCENTAGE OF FOSTER HOMES WHO RECEIVED THE  
REQUIRED VISITATION\***



\*Required visitations to foster homes, for license monitoring purposes, are performed by licensing case managers.

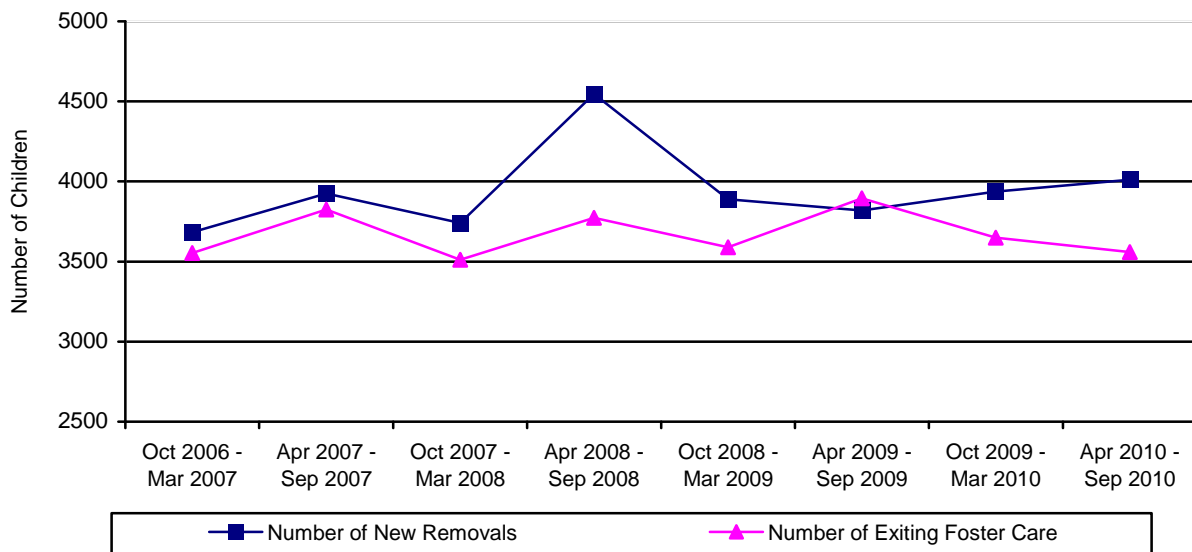
**CHILDREN EXITING OUT-OF HOME CARE**

During the reporting period, 3,559 children left the custody of the Department. This compares to 3,650 children exiting care during the prior reporting period. The comparison between the two reporting periods shows that 2.5 percent fewer children left care this reporting period for a decrease of 91 children exiting care.

**TABLE 35  
CHILDREN EXITING OUT-OF-HOME CARE BY PERIOD**

REPORTING PERIOD	NUMBER OF CHILDREN DISCHARGED	% CHANGE OVER PRIOR PERIOD
OCTOBER 2006 – MARCH 2007	3,553	-1.2%
APRIL 2007 – SEPTEMBER 2007	3,824	+7.6%
OCTOBER 2007 – MARCH 2008	3,512	-8.2%
APRIL 2008 – SEPTEMBER 2008	3,773	+7.4%
OCTOBER 2008 – MARCH 2009	3,590	-4.9%
APRIL 2009 – SEPTEMBER 2009	3,894	+8.5%
OCTOBER 2009 – MARCH 2010	3,650	-6.3%
APRIL 2010 – SEPTEMBER 2010	3,559	-2.5%

**CHART 34  
CHILDREN ENTERING AND EXITING OUT-OF-HOME CARE BY REPORTING PERIOD**



The following nine tables depict the children who exited out-of-home care by the reason for leaving care. The tables display the following information: reasons the child left custody, their age, their ethnicity, the number of placements each child had, and the length of time in out-of-home care.

**TABLE 36  
TOTAL NUMBER OF CHILDREN LEAVING DES CUSTODY FOR THE END OF THE  
REPORTING PERIOD ENDING ON SEPTEMBER 30, 2010**

<b>By Age</b>	<b>Number</b>	<b>Percentage</b>
Under 1	168	4.7%
Ages 1 – 5	1,294	36.3%
Ages 6 – 8	490	13.8%
Ages 9 – 12	567	15.9%
Ages 13 – 17	721	20.3%
18 and Over	319	9.0%
<b>Total</b>	<b>3,559</b>	<b>100.0%</b>
<b>Ethnicity</b>	<b>Number</b>	<b>Percentage</b>
Caucasian	1,392	39.0%
Hispanic	1,291	36.3%
African American	447	12.6%
American Indian	276	7.8%
Asian	58	1.6%
Other	95	2.7%
<b>Total</b>	<b>3,559</b>	<b>100.0%</b>
<b>By Number of Placements</b>	<b>Number</b>	<b>Percentage</b>
One	1,814	51.0%
Two	816	22.9%
Three	371	10.4%
Four	189	5.3%
Five	114	3.2%
More than Five	255	7.2%
<b>Total</b>	<b>3,559</b>	<b>100.0%</b>
<b>By Length of Time in Care</b>	<b>Number</b>	<b>Percentage</b>
Less than 30 Days	703	19.8%
31 Days to 12 Months	1,077	30.2%
13 to 24 Months	905	25.4%
More than 24 Months	874	24.6%
<b>Total</b>	<b>3,559</b>	<b>100.0%</b>

	<b>Average</b>	<b>Median</b>
<b>By Age</b>	8.9	7.9
<b>By Number of Placements</b>	2.4	1.0
<b>By Months of Time in Care</b>	17.0	13.0

**TABLE 37  
NUMBER AND PERCENTAGE OF CHILDREN LEAVING DES CUSTODY  
FOR REASON OF "REUNIFICATION WITH PARENTS OR PRIMARY CARETAKER" FOR  
THE REPORTING PERIOD ENDING SEPTEMBER 30, 2010**

<b>By Age</b>	<b>Number</b>	<b>Percentage</b>
Under 1	139	7.5%
Ages 1 - 5	645	35.0%
Ages 6 – 8	267	14.5%
Ages 9 - 12	324	17.6%
Ages 13 - 17	465	25.2%
18 and Over	3	0.2%
<b>Total</b>	<b>1,843</b>	<b>100.0%</b>
<b>Ethnicity</b>	<b>Number</b>	<b>Percentage</b>
Caucasian	715	38.9%
Hispanic	653	35.4%
African American	233	12.6%
American Indian	133	7.2%
Asian	39	2.1%
Other	70	3.8%
<b>Total</b>	<b>1,843</b>	<b>100.0%</b>
<b>By Number of Placements</b>	<b>Number</b>	<b>Percentage</b>
One	1,130	61.2%
Two	401	21.8%
Three	178	9.7%
Four	55	3.0%
Five	40	2.2%
More than Five	39	2.1%
<b>Total</b>	<b>1,843</b>	<b>100.0%</b>
<b>By Length of Time in Care</b>	<b>Number</b>	<b>Percentage</b>
Less than 30 Days	601	32.6%
31 Days to 12 Months	828	44.9%
13 to 24 Months	324	17.6%
More than 24 Months	90	4.9%
<b>Total</b>	<b>1,843</b>	<b>100.0%</b>

	<b>Average</b>	<b>Median</b>
<b>By Age</b>	8.2	7.6
<b>By Number of Placements</b>	1.8	1.0
<b>By Months of Time in Care</b>	8.0	5.8

**TABLE 38  
NUMBER AND PERCENTAGE OF CHILDREN LEAVING DES CUSTODY  
FOR REASON OF “LIVING WITH OTHER RELATIVES” FOR THE REPORTING PERIOD  
ENDING SEPTEMBER 30, 2010**

<b>By Age</b>	<b>Number</b>	<b>Percentage</b>
Under 1	3	7.5%
Ages 1 - 5	13	32.5%
Ages 6 – 8	8	20.0%
Ages 9 - 12	5	12.5%
Ages 13 - 17	11	27.5%
18 and Over	0	0.0%
<b>Total</b>	<b>40</b>	<b>100.0%</b>
<b>Ethnicity</b>	<b>Number</b>	<b>Percentage</b>
Caucasian	23	57.5%
Hispanic	9	22.5%
African American	4	10.0%
American Indian	4	10.0%
Asian	0	0.0%
Other	0	0.0%
<b>Total</b>	<b>40</b>	<b>100.0%</b>
<b>By Number of Placements</b>	<b>Number</b>	<b>Percentage</b>
One	38	95.0%
Two	1	2.5%
Three	0	0.0%
Four	0	0.0%
Five	0	0.0%
More than Five	1	2.5%
<b>Total</b>	<b>40</b>	<b>100.0%</b>
<b>By Length of Time in Care</b>	<b>Number</b>	<b>Percentage</b>
Less than 30 Days	33	82.5%
31 Days to 12 Months	6	15.0%
13 to 24 Months	0	0.0%
More than 24 Months	1	2.5%
<b>Total</b>	<b>40</b>	<b>100.0%</b>

	<b>Average</b>	<b>Median</b>
<b>By Age</b>	8.5	7.7
<b>By Number of Placements</b>	1.1	1.0
<b>By Months of Time in Care</b>	1.7	0.1

**TABLE 39  
NUMBER AND PERCENTAGE OF CHILDREN LEAVING DES  
CUSTODY FOR REASON OF "ADOPTION" FOR THE REPORTING PERIOD  
ENDING SEPTEMBER 30, 2010**

<b>By Age</b>	<b>Number</b>	<b>Percentage</b>
Under 1	10	1.0%
Ages 1 - 5	563	56.8%
Ages 6 – 8	176	17.8%
Ages 9 - 12	157	15.8%
Ages 13 - 17	85	8.6%
18 and Over	0	0.0%
<b>Total</b>	<b>991</b>	<b>100.0%</b>
<b>Ethnicity</b>	<b>Number</b>	<b>Percentage</b>
Caucasian	397	40.0%
Hispanic	396	40.0%
African American	116	11.7%
American Indian	64	6.5%
Asian	8	0.8%
Other	10	1.0%
<b>Total</b>	<b>991</b>	<b>100.0%</b>
<b>By Number of Placements</b>	<b>Number</b>	<b>Percentage</b>
One	399	40.3%
Two	300	30.3%
Three	128	12.9%
Four	85	8.6%
Five	34	3.4%
More than Five	45	4.5%
<b>Total</b>	<b>991</b>	<b>100.0%</b>
<b>By Length of Time in Care</b>	<b>Number</b>	<b>Percentage</b>
Less than 30 Days	0	0.0%
31 Days to 12 Months	35	3.5%
13 to 24 Months	412	41.6%
More than 24 Months	544	54.9%
<b>Total</b>	<b>991</b>	<b>100.0%</b>

	<b>Average</b>	<b>Median</b>
<b>By Age</b>	6.2	5.1
<b>By Number of Placements</b>	2.3	2.0
<b>By Months of Time in Care</b>	27.3	24.8



**TABLE 40  
NUMBER AND PERCENTAGE OF CHILDREN LEAVING DES CUSTODY  
FOR REASON OF "GUARDIANSHIP" FOR THE REPORTING PERIOD  
ENDING SEPTEMBER 30, 2010**

<b>By Age</b>	<b>Number</b>	<b>Percentage</b>
Under 1	5	1.9%
Ages 1 - 5	51	19.1%
Ages 6 – 8	34	12.7%
Ages 9 - 12	77	28.8%
Ages 13 - 17	99	37.1%
18 and Over	1	0.4%
<b>Total</b>	<b>267</b>	<b>100.0%</b>
<b>Ethnicity</b>	<b>Number</b>	<b>Percentage</b>
Caucasian	98	36.7%
Hispanic	106	39.7%
African American	34	12.7%
American Indian	24	9.0%
Asian	2	0.8%
Other	3	1.1%
<b>Total</b>	<b>267</b>	<b>100.0%</b>
<b>By Number of Placements</b>	<b>Number</b>	<b>Percentage</b>
One	154	57.6%
Two	59	22.1%
Three	28	10.5%
Four	12	4.5%
Five	8	3.0%
More than Five	6	2.3%
<b>Total</b>	<b>267</b>	<b>100.0%</b>
<b>By Length of Time in Care</b>	<b>Number</b>	<b>Percentage</b>
Less than 30 Days	21	7.9%
31 Days to 12 Months	113	42.3%
13 to 24 Months	107	40.1%
More than 24 Months	26	9.7%
<b>Total</b>	<b>267</b>	<b>100.0%</b>

	<b>Average</b>	<b>Median</b>
<b>By Age</b>	10.7	11.3
<b>By Number of Placements</b>	1.8	1.0
<b>By Months of Time in Care</b>	13.8	12.9

**TABLE 41  
NUMBER AND PERCENTAGE OF CHILDREN LEAVING DES CUSTODY  
FOR REASONS OF “REACHING AGE OF MAJORITY” FOR THE REPORTING PERIOD  
ENDING SEPTEMBER 30, 2010**

<b>By Age</b>	<b>Number</b>	<b>Percentage</b>
Under 1	0	0.0%
Ages 1 - 5	0	0.0%
Ages 6 – 8	0	0.0%
Ages 9 - 12	0	0.0%
Ages 13 - 17	3	1.0%
18 and Over	312	99.0%
<b>Total</b>	<b>315</b>	<b>100.0%</b>
<b>Ethnicity</b>	<b>Number</b>	<b>Percentage</b>
Caucasian	131	41.5%
Hispanic	96	30.5%
African American	46	14.6%
American Indian	26	8.3%
Asian	7	2.2%
Other	9	2.9%
<b>Total</b>	<b>315</b>	<b>100.0%</b>
<b>By Number of Placements</b>	<b>Number</b>	<b>Percentage</b>
One	26	8.3%
Two	36	11.4%
Three	29	9.2%
Four	37	11.8%
Five	28	8.9%
More than Five	159	50.4%
<b>Total</b>	<b>315</b>	<b>100.0%</b>
<b>By Length of Time in Care</b>	<b>Number</b>	<b>Percentage</b>
Less than 30 Days	3	1.0%
31 Days to 12 Months	54	17.1%
13 to 24 Months	54	17.1%
More than 24 Months	204	64.8%
<b>Total</b>	<b>315</b>	<b>100.0%</b>

	<b>Average</b>	<b>Median</b>
<b>By Age</b>	18.9	18.3
<b>By Number of Placements</b>	6.8	6.0
<b>By Months of Time in Care</b>	45.7	30.9

**TABLE 42  
NUMBER AND PERCENTAGE OF CHILDREN LEAVING DES CUSTODY  
FOR REASON OF "TRANSFER TO ANOTHER AGENCY" FOR THE REPORTING PERIOD  
ENDING SEPTEMBER 30, 2010**

<b>By Age</b>	<b>Number</b>	<b>Percentage</b>
Under 1	7	13.5%
Ages 1 – 5	21	40.3%
Ages 6 – 8	5	9.6%
Ages 9 – 12	4	7.7%
Ages 13 – 17	15	28.9%
18 and Over	0	0.0%
<b>Total</b>	<b>52</b>	<b>100.0%</b>
<b>Ethnicity</b>	<b>Number</b>	<b>Percentage</b>
Caucasian	11	21.2%
Hispanic	14	26.9%
African American	3	5.8%
American Indian	22	42.3%
Asian	1	1.9%
Other	1	1.9%
<b>Total</b>	<b>52</b>	<b>100.0%</b>
<b>By Number of Placements</b>	<b>Number</b>	<b>Percentage</b>
One	31	59.5%
Two	12	23.1%
Three	5	9.6%
Four	0	0.0%
Five	2	3.9%
More than Five	2	3.9%
<b>Total</b>	<b>52</b>	<b>100.0%</b>
<b>By Length of Time in Care</b>	<b>Number</b>	<b>Percentage</b>
Less than 30 Days	14	26.9%
31 Days to 12 Months	30	57.7%
13 to 24 Months	5	9.6%
More than 24 Months	3	5.8%
<b>Total</b>	<b>52</b>	<b>100.0%</b>

	<b>Average</b>	<b>Median</b>
<b>By Age</b>	7.2	5.4
<b>By Number of Placements</b>	2.0	1.0
<b>By Months of Time in Care</b>	7.0	3.1

**TABLE 43  
NUMBER AND PERCENTAGE OF CHILDREN LEAVING DES CUSTODY  
FOR REASON OF "RUNAWAY" FOR THE REPORTING PERIOD  
ENDING SEPTEMBER 30, 2010**

<b>By Age</b>	<b>Number</b>	<b>Percentage</b>
Under 1	0	0.0%
Ages 1 – 5	1	2.2%
Ages 6 – 8	0	0.0%
Ages 9 – 12	0	0.0%
Ages 13 – 17	42	91.3%
18 and Over	3	6.5%
<b>Total</b>	<b>46</b>	<b>100.0%</b>
<b>Ethnicity</b>	<b>Number</b>	<b>Percentage</b>
Caucasian	15	32.6%
Hispanic	16	34.7%
African American	11	23.9%
American Indian	2	4.4%
Asian	1	2.2%
Other	1	2.2%
<b>Total</b>	<b>46</b>	<b>100.0%</b>
<b>By Number of Placements</b>	<b>Number</b>	<b>Percentage</b>
One	32	69.6%
Two	6	13.0%
Three	3	6.5%
Four	0	0.0%
Five	2	4.4%
More than Five	3	6.5%
<b>Total</b>	<b>46</b>	<b>100.0%</b>
<b>By Length of Time in Care</b>	<b>Number</b>	<b>Percentage</b>
Less than 30 Days	30	65.3%
31 Days to 12 Months	7	15.2%
13 to 24 Months	3	6.5%
More than 24 Months	6	13.0%
<b>Total</b>	<b>46</b>	<b>100.0%</b>

	<b>Average</b>	<b>Median</b>
<b>By Age</b>	16.6	17.1
<b>By Number of Placements</b>	1.9	1.0
<b>By Months of Time in Care</b>	6.8	0.4

**TABLE 44  
NUMBER AND PERCENTAGE OF CHILDREN LEAVING DES CUSTODY  
FOR REASON OF “DEATH OF CHILD” FOR THE REPORTING PERIOD ENDING  
SEPTEMBER 30, 2010**

<b>By Age</b>	<b>Number</b>	<b>Percentage</b>
Under 1	4	80.0%
Ages 1 - 5	0	0.0%
Ages 6 – 8	0	0.0%
Ages 9 - 12	0	0.0%
Ages 13 - 17	1	20.0%
18 and Over	0	0.0%
<b>Total</b>	<b>5</b>	<b>100.0%</b>
<b>Ethnicity</b>	<b>Number</b>	<b>Percentage</b>
Caucasian	2	40.0%
Hispanic	1	20.0%
African American	0	0.0%
American Indian	1	20.0%
Asian	0	0.0%
Other	1	20.0%
<b>Total</b>	<b>5</b>	<b>100.0%</b>
<b>By Number of Placements</b>	<b>Number</b>	<b>Percentage</b>
One	4	80.0%
Two	1	20.0%
Three	0	0.0%
Four	0	0.0%
Five	0	0.0%
More than Five	0	0.0%
<b>Total</b>	<b>5</b>	<b>100.0%</b>
<b>By Length of Time in Care</b>	<b>Number</b>	<b>Percentage</b>
Less than 30 Days	1	20.0%
31 Days to 12 Months	4	80.0%
13 to 24 Months	0	0.0%
More than 24 Months	0	0.0%
<b>Total</b>	<b>5</b>	<b>100.0%</b>

	<b>Average</b>	<b>Median</b>
<b>By Age</b>	3.0	0.3
<b>By Number of Placements</b>	1.2	1.0
<b>By Months of Time in Care</b>	2.5	2.7

**TABLE 45**  
**CHILDREN EXITING CARE FOR REASON OF DEATH BY CAUSE OF DEATH,**  
**PLACEMENT TYPE AT TIME OF DEATH, AND COUNTY**

COUNTY	CAUSE OF DEATH	TYPE OF PLACEMENT AT TIME OF DEATH
Maricopa	Undetermined – sleep related	Family Foster Home
Maricopa	Undetermined – sleep related	Family Foster Home
Maricopa	Metabolic Disorder	Family Foster Home
Pima	Blunt force trauma – struck by a vehicle	Runaway
Pinal	Gastrointestinal bleeding caused by oral antibiotics	Family Foster Home

**TABLE 46**  
**NUMBER OF CHILDREN IN AN OPEN CASE WHO DIED AS A RESULT OF ALLEGED**  
**ABUSE AS CATEGORIZED BY THE CUSTODIAL RELATIONSHIP AND COUNTY FOR THE**  
**PERIOD APRIL 1, 2010 THROUGH SEPTEMBER 30, 2010**

COUNTY	BIOLOGICAL PARENT(S)	OTHER FAMILY MEMBER	ADOPTIVE PARENT(S)	FOSTER CARE PARENT(S)	OTHER OUT-OF-HOME CARE PROVIDER	TOTAL	% OF TOTAL
APACHE	0	0	0	0	0	0	0.0%
COCHISE	0	0	0	0	0	0	0.0%
COCONINO	2	0	0	0	0	2	40.0%
GILA	0	0	0	0	0	0	0.0%
GRAHAM	0	0	0	0	0	0	0.0%
GREENLEE	0	0	0	0	0	0	0.0%
LA PAZ	0	0	0	0	0	0	0.0%
MARICOPA	3	0	0	0	0	3	60.0%
MOHAVE	0	0	0	0	0	0	0.0%
NAVAJO	0	0	0	0	0	0	0.0%
PIMA	0	0	0	0	0	0	0.0%
PINAL	0	0	0	0	0	0	0.0%
SANTA CRUZ	0	0	0	0	0	0	0.0%
YAVAPAI	0	0	0	0	0	0	0.0%
YUMA	0	0	0	0	0	0	0.0%
STATEWIDE	5	0	0	0	0	5	100.0%
% OF TOTAL	100.0%	0.0%	0.0%	0.0%	0.0%	100.0%	

**CHILDREN WITH ADOPTIVE CASE PLAN GOALS**

Of the 10,514 children in out-of-home care on September 30, 2010, 2,450 or 23.3 percent had a case plan goal of adoption. The majority of those children, 47.0 percent, are in the 1-5 year old age range, followed by 18.8 percent in the 9-12 year old age range, and 17.6 percent in the 6-8 year old age range. The remaining children, 407 or 16.6 percent, fall within the under one or 13 and over age range. The majority of these children are Caucasian (949 or 38.7 percent), Hispanic (938 or 38.3 percent), or African American (350 or 14.3 percent). The remaining 213 children or 8.7 percent are American Indian, Asian or other. Seventy-two and nine tenths percent, or 1,787 of the children free for adoption, are currently placed in their adoptive homes.

**TABLE 47  
NUMBER OF CHILDREN WITH A PETITION FOR TERMINATION OF PARENTAL RIGHTS  
BY COUNTY FOR THE PERIOD APRIL 1, 2010 THROUGH SEPTEMBER 30, 2010**

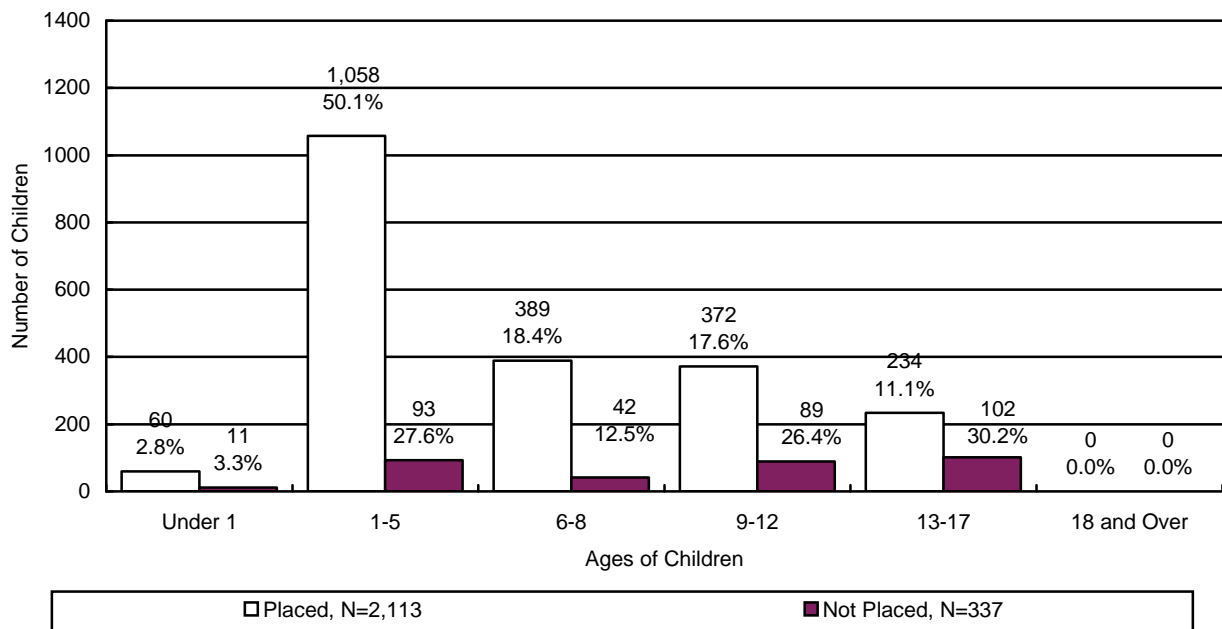
COUNTY	TERMINATION OF RIGHTS GRANTED	TERMINATION OF RIGHTS DENIED	TERMINATION OF RIGHTS GRANTED IN PART/DENIED IN PART	TERMINATION OF RIGHTS WITHDRAWN	TOTAL	% OF TOTAL
APACHE	1	0	0	0	1	0.1%
COCHISE	26	0	0	0	26	2.3%
COCONINO	9	0	0	1	10	0.9%
GILA	6	0	0	0	6	0.5%
GRAHAM	1	0	0	0	1	0.1%
GREENLEE	1	0	0	0	1	0.1%
LA PAZ	4	0	0	0	4	0.4%
MARICOPA	561	2	0	10	573	51.6%
MOHAVE	30	0	0	0	30	2.7%
NAVAJO	11	0	0	0	11	1.0%
PIMA	323	4	0	11	338	30.5%
PINAL	47	0	0	1	48	4.3%
SANTA CRUZ	0	0	0	0	0	0.0%
YAVAPAI	34	0	0	0	34	3.1%
YUMA	27	0	0	0	27	2.4%
STATEWIDE	1,081	6	0	23	1,110	100.0%
% OF TOTAL	97.4%	0.5%	0.0%	2.1%	100.0%	

The average length of time that a child with a case plan goal of “adoption” has spent in out-of-home care is 2 years, 3 months. There were a total of 2,450 children with case plan goals of adoption during this reporting period. Of this total, 2,113 were placed and 337 were not placed. The population of children with case plan goals of adoption averaged 2.8 placements and had a median placement count of 2.0. Their placement count ranged from 1 to 31.

**TABLE 48  
PLACEMENT INFORMATION FOR CHILDREN WITH A CASE PLAN GOAL OF ADOPTION**

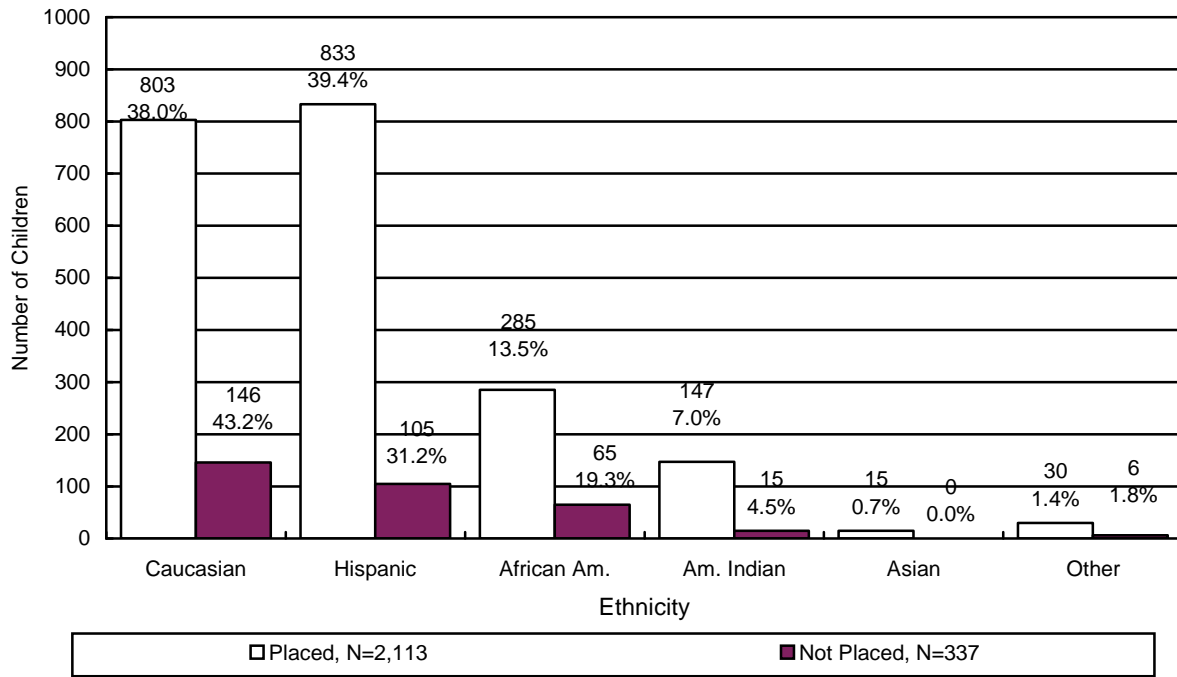
	<b>Placements</b>
<b>Average</b>	2.8
<b>Median</b>	2.0
<b>Range Minimum</b>	1
<b>Range Maximum</b>	31

**CHART 35  
THE PLACEMENT AND NUMBER OF CHILDREN WITH A CASE PLAN GOAL OF ADOPTION BY AGE**

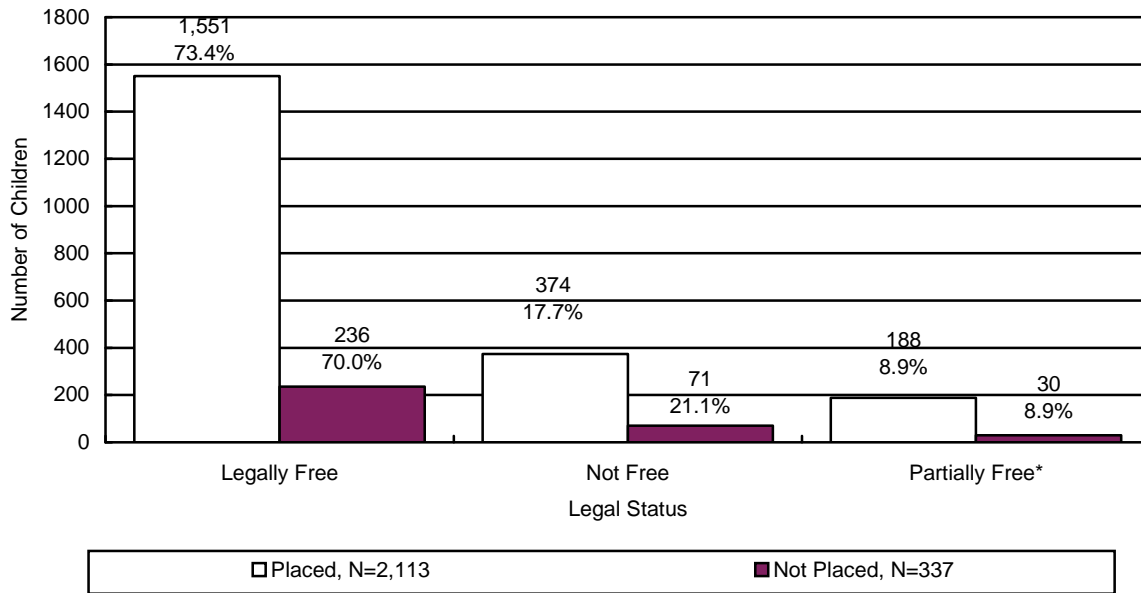




**CHART 36**  
**THE PLACEMENT AND NUMBER OF CHILDREN WITH A CASE PLAN GOAL OF ADOPTION BY ETHNICITY**

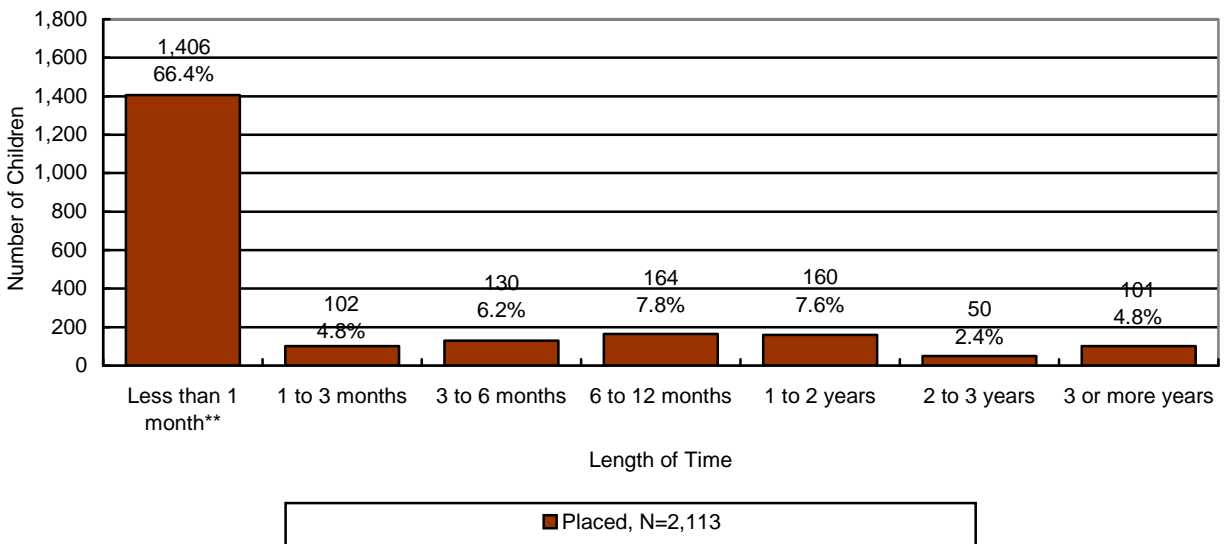


**CHART 37**  
**THE PLACEMENT AND NUMBER OF CHILDREN WITH A CASE PLAN GOAL OF ADOPTION BY LEGAL STATUS**



\*Partially free refers to a situation where only one of the parent's rights has been severed.

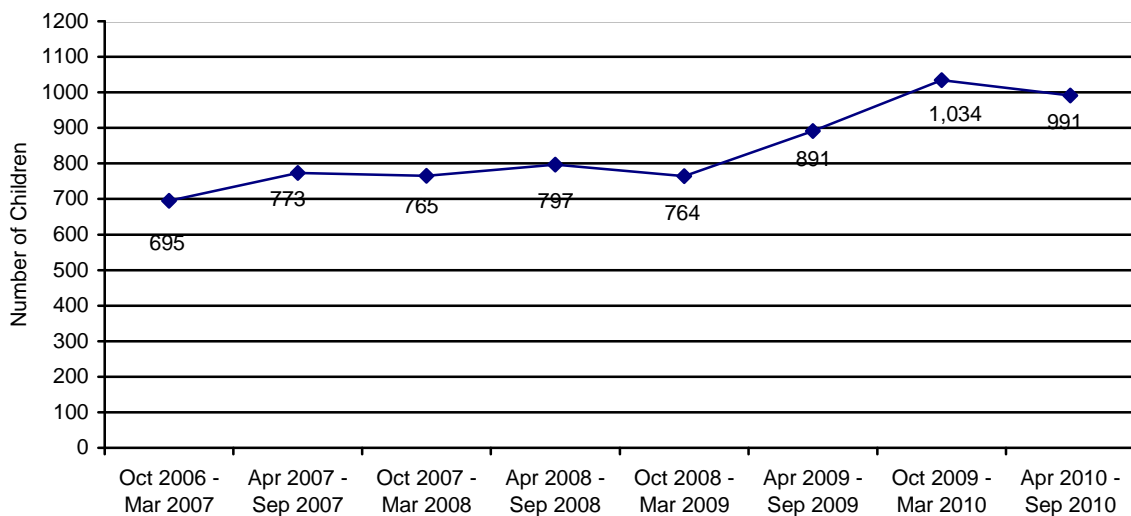
**CHART 38**  
**THE NUMBER OF CHILDREN WITH A CASE PLAN GOAL OF ADOPTION BY LENGTH OF TIME FROM CHANGE OF CASE PLAN GOAL OF ADOPTION TO ADOPTIVE PLACEMENT**



\*\*About 70 percent of children are adopted by relatives or their foster parents and are already in their prospective adoptive placement at the time the case plan goal changes to adoption.

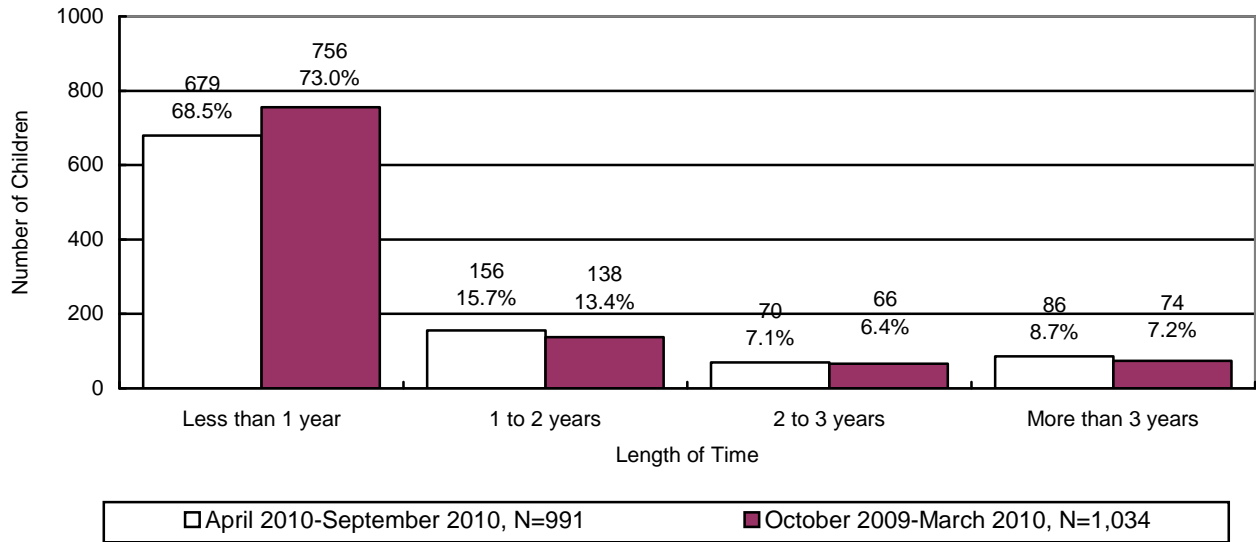
**ADOPTIVE SERVICES**

**CHART 39**  
**THE NUMBER OF CHILDREN WITH A FINALIZED ADOPTION**



There were 991 children with a finalized adoption during the reporting period. Chart 40 displays the number of children with a finalized adoption during the reporting period by the average length of time in out-of-home placement before adoptive placement.

**CHART 40**  
**THE NUMBER AND PERCENTAGE OF CHILDREN WITH A FINALIZED ADOPTION BY**  
**AVERAGE LENGTH OF TIME IN OUT-OF-HOME PLACEMENT BEFORE ADOPTIVE**  
**PLACEMENT**



The chart below displays the number of children with a finalized adoption by average length of time in adoptive placement before the final order of adoption.

**CHART 41**  
**THE NUMBER AND PERCENTAGE OF CHILDREN WITH A FINALIZED ADOPTION BY**  
**AVERAGE LENGTH OF TIME IN ADOPTIVE PLACEMENT BEFORE THE FINAL ORDER**  
**OF ADOPTION**

