

CHILD WELFARE REPORTING REQUIREMENTS

SEMI-ANNUAL REPORT

FOR THE PERIOD OF

APRIL 1, 2011 THROUGH SEPTEMBER 30, 2011

ARIZONA REVISED STATUTES

[LAWS 2011, CHAPTER 147]

ARIZONA DEPARTMENT OF ECONOMIC SECURITY

DIVISION OF CHILDREN, YOUTH AND FAMILIES

CHILD WELFARE REPORTING REQUIREMENTS

Arizona Revised Statute § 8-526, as amended by Laws 2011, Chapter 147 requires the Arizona Department of Economic Security (DES) to compile information and produce a semi-annual report for the periods ending on March 31 and September 30 of each year regarding Child Welfare Services, including Child Protective Services (CPS). This report, submitted in satisfaction of that mandate, is for the semi-annual reporting period beginning on April 1, 2011 and ending on September 30, 2011.

TABLE OF CONTENTS

(Reporting period: April 1, 2011 through September 30, 2011)

	<u>Page</u>
EXECUTIVE SUMMARY	4
SEMI-ANNUAL COMPARISONS	7
REPORTS OF CHILD ABUSE AND NEGLECT	
Reports by reporting period and type of child maltreatment – statewide data.....	8
Sample communications to hotline, not meeting definition of a report.....	10
Reports received by risk level/response time - statewide data.....	11
Number of reports received by risk level/response time – county specific data.....	11
Number of reports received by maltreatment – statewide data.....	12
Number of reports received by maltreatment – county specific data.....	13
ASSIGNMENT OF INVESTIGATIONS	
Reports assigned for investigation by risk level/response time – statewide data.....	14
Reports assigned for investigation by risk level/response time – county specific data....	14
Reports assigned for investigation by type of maltreatment – statewide data.....	15
Reports assigned for investigation by type of maltreatment – county specific data.....	16
INVESTIGATIONS OF CHILD ABUSE AND NEGLECT	
Reports not responded to by risk level/response time – county specific data.....	17
Investigations by risk level/response time – investigation still open – statewide data.....	18
Investigations by risk level/response time – investigation still open – county specific data.....	18
Investigations by type of child maltreatment – investigation still open – statewide data...	19
Investigations by type of child maltreatment – investigation still open – county specific data.....	20
Reports where removal occurred – county specific data.....	21
COMPLETED INVESTIGATIONS	
Substantiation rate by reporting period.....	23
Investigations by risk level/response time – proposed substantiated reports – statewide data.....	24
Investigations by risk level/response time – proposed substantiated reports – county specific data.....	24
Investigations by type of child maltreatment – proposed substantiated reports – statewide data.....	25
Investigations by type of child maltreatment – proposed substantiated reports – county specific data.....	26
Investigations by risk level/response time – substantiated reports – statewide data.....	27

TABLE OF CONTENTS (continued)
 (Reporting period: April 1, 2011 through September 30, 2011)

	<u>Page</u>
Investigations by risk level/response time – substantiated reports county specific data....	27
Investigations by type of child maltreatment – substantiated reports – statewide data.....	28
Investigations by type of child maltreatment – substantiated reports – county specific data.....	29
Investigations by risk level/response time – unsubstantiated reports – statewide data.....	30
Investigations by risk level/response time – unsubstantiated reports – county specific data.....	30
Investigations by type of child maltreatment – unsubstantiated reports – statewide data..	31
Investigations by type of child maltreatment – unsubstantiated reports – county specific data.....	32
SAFE HAVEN INFANTS	
Number of Safe Haven infants delivered during reporting period.....	33
CHILDREN ENTERING OUT-OF-HOME CARE	
Total children entering out-of-home care.....	33
New entries by county – children under 18 years voluntary placement.....	34
New entries by county.....	35
New entries – statewide data.....	36
CHILDREN IN OUT-OF-HOME CARE	
Children in out-of-home care by reporting period.....	37
Children in group homes ages 0 through 6.....	38
Children in shelter ages 0 through 3.....	38
The average length of stay in a shelter placement for children ages 0-3 who were in a shelter placement on the last day of the reporting period.....	39
All children in care by age and ethnicity.....	39-40
All children in care by case plan goal and placement type.....	40-41
All children in care by placement type and age.....	42
Children in shelter or receiving homes for more than 21 days.....	43
Children in out-of-home care by length of time in care.....	44
Children in out-of-home care by legal status.....	45
Children receiving required visitation.....	46
FOSTER HOME LICENSING, CLOSURES, AND VISITATIONS	
Foster homes licensed.....	47
Foster homes closed and reason for closure.....	47
Child bed spaces available.....	47
Number of foster homes receiving the required visitation.....	48
CHILDREN LEAVING OUT-OF-HOME CARE	
Semi-Annual comparisons of total number leaving care – for all reasons.....	49
Total number leaving care.....	50
Total number leaving care – for reason of reunification with parents.....	51
Total number leaving care – for reason of living with other relatives.....	52
Total number leaving care – for reason of adoption.....	53
Total number leaving care – for reason of guardianship.....	54

TABLE OF CONTENTS (continued)
 (Reporting period: April 1, 2011 through September 30, 2011)

	<u>Page</u>
Total number leaving care – for reason of reaching age of majority.....	55
Total number leaving care – for reason of transfer to another agency.....	56
Total number leaving care – for reason of runaway.....	57
Total number leaving care – for reason of death of child.....	58
Total number leaving care – by cause of death.....	59
Total number for reason of death of child – with alleged abuse.....	59
CHILDREN WITH CASE PLAN GOALS OF ADOPTION	
Number of children with a petition for termination of parental rights.....	60
The placement and number of children with case plan goals of adoption by age.....	61
The placement and number of children with case plan goals of adoption by ethnicity.....	62
The placement and number of children with case plan goals of adoption by legal status..	62
Number of children – length of time from change of case plan goal of adoption to adoptive placement.....	63
Number of children in an adoptive placement by the marital status of the adoptive parent.....	63
Number of children in an adoptive placement by the relationship of the adoptive parent.....	64
DISRUPTIONS	
Number of children with a case plan goal of adoption in an adoptive placement that disrupted by age and ethnicity.....	64
Number of children with a case plan goal of adoption in an adoptive placement that disrupted by the marital status of the adoptive parent.....	65
Number of children with a case plan goal of adoption in an adoptive placement that disrupted by the relationship of the adoptive parent.....	65
ADOPTIVE SERVICES	
Number of children with a finalized adoption by average length of time in out-of-home placement before adoptive placement.....	66
Number of children with a finalized adoption by average length of time in adoptive placement before the final order of adoption.....	68

Executive Summary

The Arizona Department of Economic Security's Division of Children, Youth and Families (Division) is pleased to publish this semi-annual report for April 2011 through September 2011 in compliance with A.R.S. § 8-526. This report is intended to provide its readers an opportunity to review the Division's progress in implementing systemic improvement strategies as they impact key performance indicators.

The Division has continuously pursued strategies to achieve improved outcomes for children and families. Many of these strategies have been highlighted in previous editions of this report and other Division publications, and have included strengthening of the Division's quality improvement system, increasing staff skill in the application of the Division's integrated child safety assessment and risk assessment tools, and strengthening in-home services to safely avoid removing children from their homes. Current areas of focus and development include conducting targeted case reviews to identify specific opportunities to move toward reunification or other permanency plans in a more timely fashion and enhancing and strengthening Child Protective Services (CPS) clinical supervision through training and coaching experiences.

The data contained within this Semi-Annual Report, when combined with other child welfare-related information in the Department, highlights progress made in certain areas while also helping to identify where continued focus is needed.

Child Abuse Hotline and Child Protective Services (CPS) Investigations

The statewide Child Abuse Hotline received 29,120 calls during this reporting period. Of those, 9,454 – or 32.5 percent – *did not meet* the statutory criteria for a CPS report. Calls that did not meet the criteria for a CPS report included: requests for information or referrals for services; questions about current cases; and allegations of abuse or neglect where the alleged perpetrator was not the child's parent, guardian or custodian (those calls are referred to law enforcement for response). Every call that does not meet the criteria for a CPS report is reviewed within 48 hours by quality assurance staff to ensure the accuracy of that decision.

The statewide Child Abuse Hotline received 19,666 calls during this reporting period that met the statutory criteria for a CPS report. Of those, 239 were referred to other jurisdictions, the military or tribal governments for investigation and an additional 182 reports were not assigned for investigation. This resulted in 19,245 CPS reports being assigned to child welfare specialists for investigation. Compared to the same reporting period last year, this represents an increase of 2,393 CPS reports assigned for investigation – or 14.2 percent. This increase in CPS reports requiring an investigation has primarily occurred in Pinal and Yavapai counties.

Of the 19,245 CPS reports assigned for investigation during this reporting period, 9,953 reports – or 51.7 percent – had investigation closures entered into the Children's Information Library and Data Source (CHILDS) statewide case management information system. Closing a case means that the initial investigation to the original allegations of abuse or neglect has been completed and the appropriate case plan is put in place, as needed. Many factors can impact the closure of investigations, including time needed for child welfare specialists to obtain all information needed to complete an accurate and thorough assessment.

Of the 19,245 CPS reports subject to substantiation during this reporting period, 1,465 – or 7.6 percent – were substantiated. An additional 571 CPS reports – or 3.0 percent – were proposed for substantiation by child welfare specialists and are currently awaiting the results of the appeals process. Over time, the number of substantiated and proposed substantiated CPS reports associated with this time period will

increase as investigation findings are entered into CHILDS. It is sometimes difficult to substantiate allegations of abuse or neglect because current state laws that define child maltreatment do not include many situations related to child neglect or sexual abuse.

Children in Out-of-Home Care

The Division remains committed to working with the community to keep children safe, strengthen families, and prevent the need for children to be removed from their homes. The number of children in out-of-home care increased from 10,707 in the prior reporting period to 11,535 in September 2011. Of the children in out-of-home care, the number of children placed in congregate care increased from 1,387 in March 2011 to 1,586 in September 2011. However, the Division continues its success in placing children in the most family-like setting possible. In September 2011, 9,326 children – or 80.7 percent of all children in out-of-home care – were placed with relatives or licensed foster parents. An additional 41 children were placed with their parents on a trial home visit and 334 youth were residing in independent living settings. Efforts to increase the number of licensed foster parents who are able to meet the needs of children requiring out-of-home placement resulted in 582 new homes being licensed during this reporting period.

The Division continues to focus on the number of young children in shelter and group home care. In September 2011, there were 20 young children ages 0 through 3 in shelter care. Placement of young children in shelter care continues to be influenced by the need to place some children after regular work hours, such as weekends, as well as the placement of children in a specialized shelter in Pima County for medically fragile children. The Division has also worked diligently to reduce the number of very young children in group homes. In September 2011, there were 11 young children ages 0 to 6 in group homes. There are times when placement of young children in group homes is in the best interests of the children; for example, when group placement would allow siblings to stay together or when group placement is considered the least restrictive placement for a child with behavioral issues.

The state requires monthly face-to-face visitation with children in foster care. The current report shows that 81.2 percent of the children in foster care received their visitation during the last month of the reporting period. This compares to 82.5 percent receiving their visit during the last month of the reporting period ending March 2011. The Department recognizes a strong correlation between CPS specialist visits with children and positive outcomes for these children, such as achieving permanency and other indicators of child well-being, and continues to make efforts to improve our rate of visitation.

Permanency for Children

The Division continues to work toward achieving permanency for children placed in out-of-home care. The total number of children achieving permanency through family reunification, adoption or legal guardianship was 3,099 this reporting period, compared to 3,101 the same reporting period last year. As evidenced below, the Division increased adoptions by 8.8 percent over the same period a year ago; however, guardianship decreased by 10.9 percent for the same period. The reunification of children with their parents for the same period a year ago decreased by 3.3 percent.

Compared to the same reporting period last year, in this reporting period:

- 1,783 children exited the system to family reunification, a decrease of 60 children – or 3.3 percent.
- 1,078 children exited to adoption, an increase of 87 children – or 8.8 percent.
- 238 children exited to guardianship, a decrease of 29 children – or 10.9 percent.

Challenges

The Division continues to face challenges in its efforts to ensure safety and promote permanency for abused and neglected children. Some of the challenges the Division has faced in meeting these goals are:

- Impact of vacancies in CPS specialist positions.
- Hiring and retaining trained and qualified staff.
- Economic factors which create additional stress upon families and increases factors that place children at risk of maltreatment.
- More complex family situations, as noted by child welfare staff who conduct investigations and work with families.
- Recruitment of foster homes for older youth ages 12 to 18 years old.
- Impact of reductions in behavioral health services for both children and adults.
- Increase in the number of Child Abuse Hotline reports in the urban counties.

Despite these challenges, the Division continues to ensure its child welfare staff has the tools they need to do their jobs effectively, and that both state and federal standards are being implemented. The Division continues to work in partnership with the federal government to meet the federal Child and Family Service Review (CFSR) standards to improve outcomes for the children and families it serves.

Semi-Annual Comparisons

	Oct 2007 through Mar 2008	Apr 2008 through Sep 2008	Oct 2008 through Mar 2009	Apr 2009 through Sep 2009	Oct 2009 through Mar 2010	Apr 2010 through Sep 2010	Oct 2010 through Mar 2011	Apr 2011 through Sep 2011
Number of Reports Received	17,628	17,493	17,094	16,134	17,110	17,068	17,586	19,666
Number of Reports Substantiated ¹	1,223	1,331	1,238	1,296	2,122	2,264	2,274	1,465
Substantiation Rate	8%	9%	9%	9%	13%	13%	13%	8%
Number of Reports Investigated & Closed	10,760	10,064	10,686	10,397	8,149	8,403	8,481	9,953
Number of Reports Responded To	17,413	17,310	16,820	15,496	16,602	16,853	17,378	19,245
Number of new removals	3,742	4,546	3,889	3,819	3,936	4,010	3,978	4,531
Number of new removals with Voluntary under 18	408	370	319	148	125	135	192	155
Number of Children in Out-of-Home Care on the Last Day of Reporting Period	9,721	10,303	10,404	10,112	10,207	10,514	10,707	11,535
Number of Children in Shelter for More than 21 Days	626	585	529	450	423	471	534	842
Number and Percentage of Children Receiving Visitation In the Last Month of Reporting Period	7,376 (75.9%)	7,664 (74.4%)	7,247 (69.7%)	8,201 (81.1%)	8,973 (87.9%)	8,930 (84.9%)	8,838 (82.5%)	9,363 (81.2%)
Number and Percentage of Children not Receiving Visitation	2,345 (24.1%)	2,639 (25.6%)	3,157 (30.3%)	1,911 (18.9%)	1,234 (12.1%)	1,584 (15.1%)	1,869 (17.5%)	2,172 (18.8%)
Number and Percentage of Parents Receiving Visitation	1,025 (62.3%)	1,022 (60.2%)	939 (53.6%)	1,364 (59.6%)	1,578 (64.8%)	1,128 (56.4%)	1,144 (57.3%)	994 (54.5%)
Number of Licensed Foster Homes	3,592	3,615	3,923	3,954	3,932	3,747	3,595	3,496
Number of Foster Home Spaces Available to ACYF	6,283	7,116	8,293	8,625	8,789	8,693	8,483	8,191
Number of New Foster Homes	794	162	648	107	560	718	524	582
Number of Foster Homes Closed	445	139	340	76	582	903	676	681
Number and Percentage of Foster Homes Receiving Visitation In the Last Qtr. Of Reporting Period	2,137 (59.5%)	2,412 (66.7%)	2,993 (76.3%)	3,224 (81.6%)	3,240 (82.4%)	3,102 (82.8%)	3,182 (88.5%)	3,121 (89.3%)
Number and Percentage of Foster Homes not Receiving Visitation	1,455 (40.5%)	1,203 (33.3%)	930 (23.7%)	730 (18.4%)	692 (17.6%)	645 (17.2%)	413 (11.5%)	375 (10.7%)
Number of Children Leaving DES Custody	3,512	3,773	3,590	3,894	3,650	3,559	3,649	3,574
Number of Children With a Case Plan Goal of Adoption	1,954	1,856	2,047	2,505	2,411	2,450	2,426	2,561
Number of Children With a Finalized Adoption	765	797	764	891	1,034	991	1,186	1,078

¹ Since the appeals process delays the substantiation of reports, revisions to the substantiation rate for the prior reporting period will occur with every semi-annual report produced.

Reports of Abuse and Neglect

Child abuse and neglect are defined in A.R.S. §8-201 and A.R.S. §13-3623 (A). These definitions provide the major categories in this report.

Between April 1, 2011 and September 30, 2011, there were 19,666 incoming communications to the Child Abuse Hotline that met the criteria for a report of abuse or neglect. Of these, 239 were within the jurisdiction of military or tribal governments and were referred to those jurisdictions. This compares to 17,586 incoming communications received during the last reporting period which met the criteria of a report of abuse or neglect.

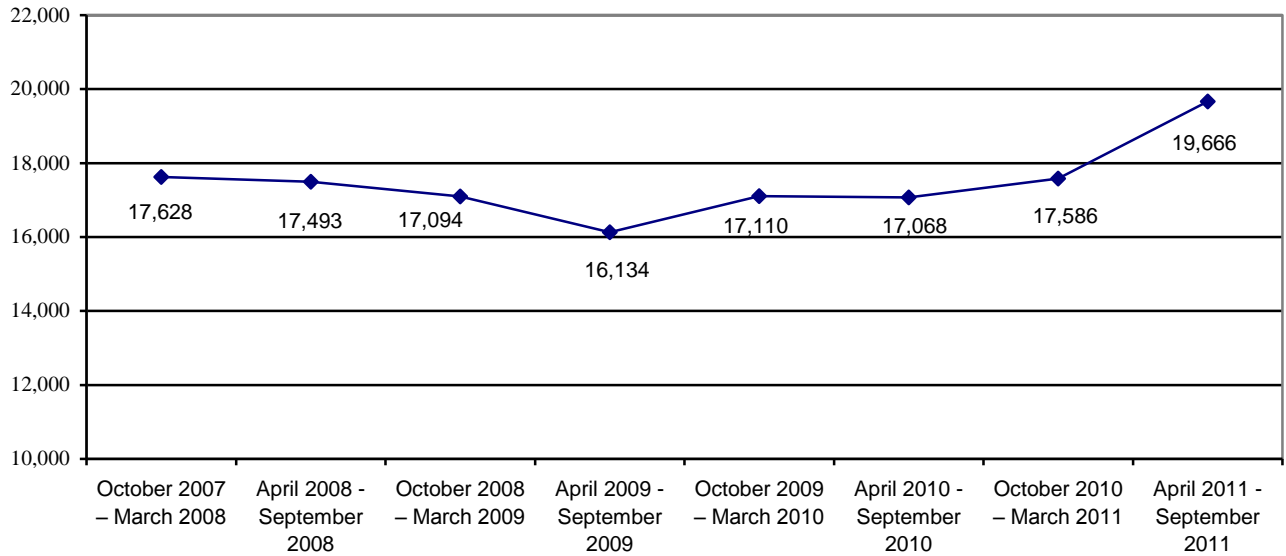
Table 1 shows the number of reports received by the Department by category of maltreatment for the last eight reporting periods. The table shows that for the current reporting period 13,158 or 66.8 percent of the 19,666 reports of maltreatment were related to allegations of neglect, 5,615 or 28.6 percent of the reports were related to allegations of physical abuse, 739 or 3.8 percent of the reports were related to allegations of sexual abuse, and 154 or 0.8 percent of the reports were related to allegations of emotional abuse.

**TABLE 1
REPORTS BY REPORTING PERIOD AND TYPE OF MALTREATMENT**

	Neglect	Physical Abuse	Sexual Abuse	Emotional Abuse	Total
October 2007 – March 2008	10,449 59.2%	6,005 34.1%	980 5.6%	194 1.1%	17,628 100.0%
April 2008 – September 2008	10,539 60.2%	5,737 32.8%	1,028 5.9%	189 1.1%	17,493 100.0%
October 2008 – March 2009	9,845 57.6%	6,064 35.5%	975 5.7%	210 1.2%	17,094 100.0%
April 2009 – September 2009	9,666 59.9%	5,372 33.3%	919 5.7%	177 1.1%	16,134 100.0%
October 2009 – March 2010	10,127 59.2%	5,866 34.3%	930 5.4%	187 1.1%	17,110 100.0%
April 2010 – September 2010	10,561 61.8%	5,515 32.3%	812 4.8%	180 1.1%	17,068 100.0%
October 2010 – March 2011	10,960 62.3%	5,755 32.7%	712 4.1%	159 0.9%	17,586 100.0%
April 2011 – September 2011	13,158 66.8%	5,615 28.6%	739 3.8%	154 0.8%	19,666 100.0%

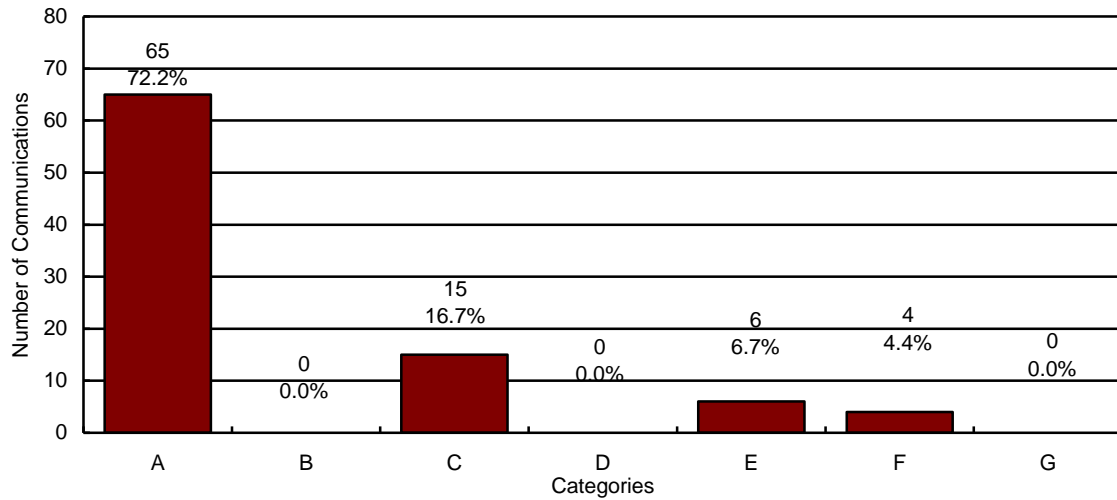
Chart 1 shows that the number of CPS reports received by the CPS Hotline has increased 2,598 reports or 15.2 percent over the past year. Comparing the current reporting period to the prior reporting period, the number of reports received increased by 2,080 reports or 11.8 percent.

**CHART 1
REPORTS OF CHILD ABUSE AND NEGLECT BY REPORTING PERIOD**



In addition to the 19,666 reports during the current reporting period, the Child Abuse Hotline received 9,454 communications that did not meet the statutory criteria of a report of maltreatment. A random sample of these communications is contained in the chart below.

CHART 2
SAMPLE OF COMMUNICATIONS TO THE CHILD ABUSE HOTLINE THAT DO NOT MEET THE STATUTORY REQUIREMENTS OF A REPORT OF ABUSE OR NEGLECT



N=90

- A = Concern Only/No Allegation of Child Abuse or Neglect**
- B = Out of CPS Jurisdiction**
- C = Call Appropriate for Law Enforcement Jurisdiction²**
- D = Non-Caretaker Neglect/Child No Longer at Risk**
- E = Insufficient Information**
- F = Truancy/Custody Issues**
- G = Current Case Questions or Referrals**

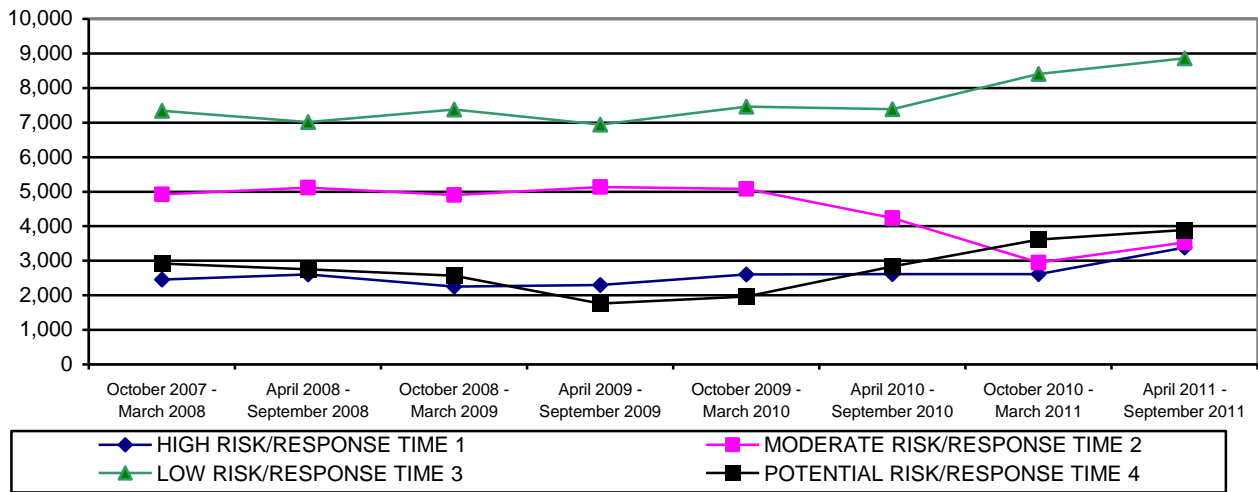
All communications that do not meet the statutory requirements for a field investigation of abuse or neglect are reviewed within 48 hours by DES quality assurance staff.

² The category “Call Appropriate for Law Enforcement Jurisdiction” refers to a situation where the alleged perpetrator is not a parent or primary caretaker and the allegations, if true, would constitute a crime.

For the current reporting period, the CPS Hotline classified 17.2 percent of the reports received as response time 1, 18.0 percent as response time 2, 45.0 percent as response time 3, and 19.8 percent as response time 4.

For the current reporting period, the CPS Hotline classified 0.8 percent of CPS reports as emotional abuse, 66.8 percent as neglect, 28.6 percent as physical abuse, and 3.8 percent as sexual abuse.

**CHART 3
NUMBER OF REPORTS RECEIVED BY RISK LEVEL/RESPONSE TIME**



**TABLE 2
NUMBER OF REPORTS RECEIVED BY RISK LEVEL/RESPONSE TIME AND COUNTY
FOR PERIOD OF APRIL 1, 2011 THROUGH SEPTEMBER 30, 2011**

COUNTY	RESPONSE TIME 1	RESPONSE TIME 2	RESPONSE TIME 3	RESPONSE TIME 4	TOTAL	% OF TOTAL
APACHE	12	10	43	20	85	0.4%
COCHISE	74	81	189	68	412	2.1%
COCONINO	56	63	177	69	365	1.9%
GILA	19	44	87	31	181	0.9%
GRAHAM	13	22	51	20	106	0.5%
GREENLEE	1	4	4	4	13	0.1%
LA PAZ	15	16	32	12	75	0.4%
MARICOPA	2,094	2,052	4,986	2,260	11,392	58.0%
MOHAVE	113	112	293	123	641	3.3%
NAVAJO	46	59	124	49	278	1.4%
PIMA	520	623	1,740	684	3,567	18.1%
PINAL	238	264	645	331	1,478	7.5%
SANTA CRUZ	12	17	38	11	78	0.4%
YAVAPAI	88	95	259	113	555	2.8%
YUMA	82	71	194	93	440	2.2%
STATEWIDE	3,383	3,533	8,862	3,888	19,666	100.0%
% OF TOTAL	17.2%	18.0%	45.0%	19.8%	100.0%	

**TABLE 3
NUMBER OF REPORTS RECEIVED BY RISK LEVEL/RESPONSE TIME AND COUNTY
FOR PERIOD OF OCTOBER 1, 2010 THROUGH MARCH 31, 2011**

COUNTY	HIGH/ RESPONSE TIME 1	MODERATE / RESPONSE TIME 2	LOW/ RESPONSE TIME 3	POTENTIAL / RESPONSE TIME 4	TOTAL	% OF TOTAL
APACHE	9	11	31	20	71	0.4%
COCHISE	54	65	185	81	385	2.2%
COCONINO	34	47	168	69	318	1.8%
GILA	32	31	76	30	169	1.0%
GRAHAM	13	25	39	21	98	0.6%
GREENLEE	3	3	8	3	17	0.1%
LA PAZ	9	10	18	12	49	0.3%
MARICOPA	1,572	1,703	4,835	2,135	10,245	58.2%
MOHAVE	82	105	255	114	556	3.1%
NAVAJO	44	40	149	39	272	1.6%
PIMA	436	551	1,664	664	3,315	18.8%
PINAL	182	189	527	222	1,120	6.3%
SANTA CRUZ	20	11	33	15	79	0.5%
YAVAPAI	66	86	235	100	487	2.8%
YUMA	61	67	186	91	405	2.3%
STATEWIDE	2,617	2,944	8,409	3,616	17,586	100.0%
% OF TOTAL	14.9%	16.7%	47.8%	20.6%	100.0%	

**CHART 4
NUMBER OF REPORTS RECEIVED BY TYPE OF MALTREATMENT**

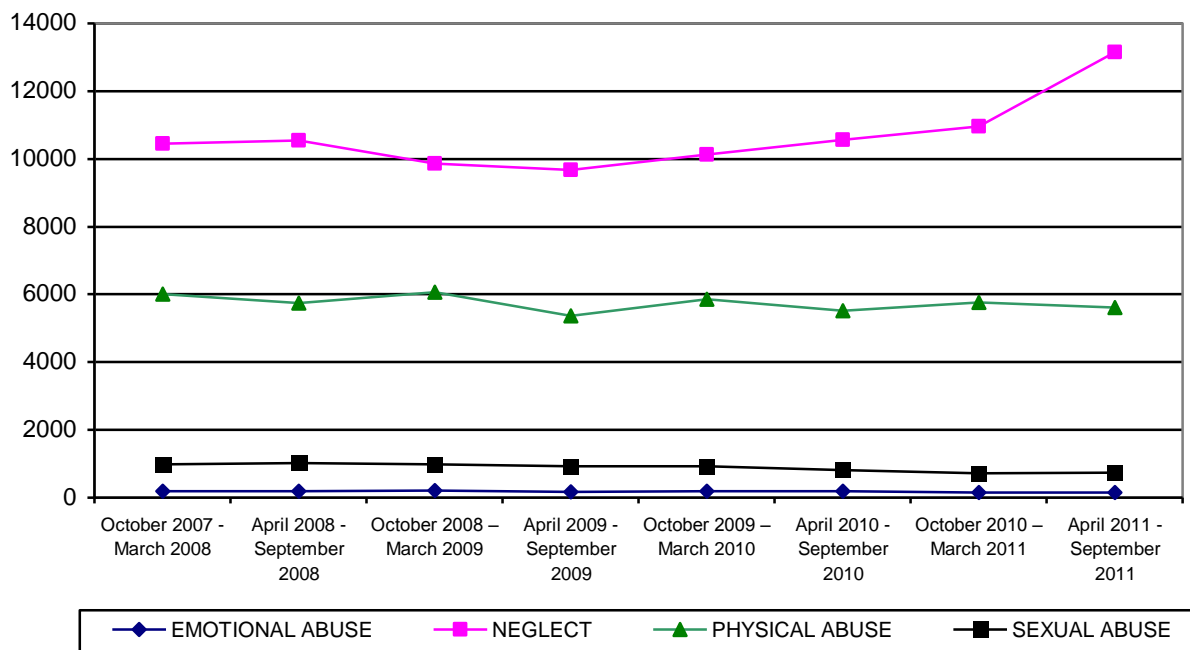


TABLE 4
NUMBER OF REPORTS RECEIVED BY TYPE OF MALTREATMENT AND COUNTY
FOR PERIOD OF (APRIL 1, 2011 THROUGH SEPTEMBER 30, 2011)

COUNTY	EMOTIONAL ABUSE	NEGLECT	PHYSICAL ABUSE	SEXUAL ABUSE	TOTAL	% OF TOTAL
APACHE	1	62	21	1	85	0.4%
COCHISE	2	288	100	22	412	2.1%
COCONINO	8	239	104	14	365	1.9%
GILA	2	135	38	6	181	0.9%
GRAHAM	0	69	29	8	106	0.5%
GREENLEE	0	7	6	0	13	0.1%
LA PAZ	3	47	24	1	75	0.4%
MARICOPA	80	7,541	3,371	400	11,392	58.0%
MOHAVE	2	461	154	24	641	3.3%
NAVAJO	3	185	78	12	278	1.4%
PIMA	30	2,466	951	120	3,567	18.1%
PINAL	13	943	440	82	1,478	7.5%
SANTA CRUZ	2	53	19	4	78	0.4%
YAVAPAI	5	381	134	35	555	2.8%
YUMA	3	281	146	10	440	2.2%
STATEWIDE	154	13,158	5,615	739	19,666	100.0%
% OF TOTAL	0.8%	66.8%	28.6%	3.8%	100.0%	

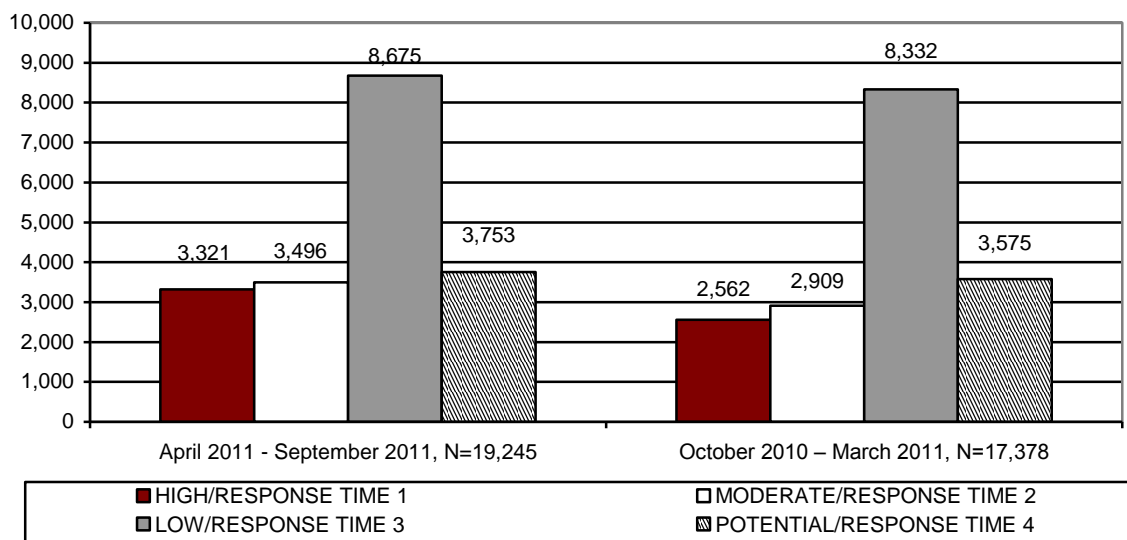
TABLE 5
NUMBER OF REPORTS RECEIVED BY TYPE OF MALTREATMENT AND COUNTY FOR
PERIOD OF OCTOBER 1, 2010 THROUGH MARCH 31, 2011

COUNTY	EMOTIONAL ABUSE	NEGLECT	PHYSICAL ABUSE	SEXUAL ABUSE	TOTAL	% OF TOTAL
APACHE	0	47	20	4	71	0.4%
COCHISE	3	235	124	23	385	2.2%
COCONINO	5	185	122	6	318	1.8%
GILA	2	126	38	3	169	1.0%
GRAHAM	0	66	29	3	98	0.6%
GREENLEE	0	11	5	1	17	0.1%
LA PAZ	0	37	10	2	49	0.3%
MARICOPA	91	6,328	3,401	425	10,245	58.2%
MOHAVE	4	370	155	27	556	3.1%
NAVAJO	2	189	73	8	272	1.6%
PIMA	31	2,098	1,076	110	3,315	18.8%
PINAL	14	658	401	47	1,120	6.3%
SANTA CRUZ	0	49	23	7	79	0.5%
YAVAPAI	4	294	161	28	487	2.8%
YUMA	3	267	117	18	405	2.3%
STATEWIDE	159	10,960	5,755	712	17,586	100.0%
% OF TOTAL	0.9%	62.3%	32.7%	4.1%	100.0%	

ASSIGNMENT OF INVESTIGATIONS

During the reporting period, there were 19,666 calls to the hotline that met the statutory criteria for a report. Of those, 239 reports fell within the jurisdiction of military or tribal governments and 182 reports were not investigated. This left 19,245 reports that were assigned to be investigated by CPS. The following tables and charts in this section provide statewide and county level information on these reports.

**CHART 5
NUMBER OF REPORTS ASSIGNED FOR INVESTIGATION BY RISK LEVEL/RESPONSE TIME AND REPORTING PERIOD**



**TABLE 6
NUMBER OF REPORTS ASSIGNED FOR INVESTIGATION BY RISK LEVEL/RESPONSE TIME AND COUNTY FOR PERIOD OF APRIL 1, 2011 THROUGH SEPTEMBER 30, 2011**

COUNTY	RESPONSE TIME 1	RESPONSE TIME 2	RESPONSE TIME 3	RESPONSE TIME 4	TOTAL	% OF TOTAL
APACHE	12	9	38	16	75	0.4%
COCHISE	74	81	189	67	411	2.1%
COCONINO	45	55	156	52	308	1.6%
GILA	18	41	81	27	167	0.9%
GRAHAM	12	22	50	20	104	0.5%
GREENLEE	1	4	4	4	13	0.1%
LA PAZ	12	14	25	10	61	0.3%
MARICOPA	2,081	2,049	4,879	2,181	11,190	58.1%
MOHAVE	110	112	291	122	635	3.3%
NAVAJO	32	53	109	40	234	1.2%
PIMA	516	621	1,735	677	3,549	18.4%
PINAL	228	257	628	321	1,434	7.5%
SANTA CRUZ	12	17	38	11	78	0.4%
YAVAPAI	88	91	259	112	550	2.9%
YUMA	80	70	193	93	436	2.3%
STATEWIDE	3,321	3,496	8,675	3,753	19,245	100.0%
% OF TOTAL	17.3%	18.2%	45.0%	19.5%	100.0%	

**TABLE 7
NUMBER OF REPORTS ASSIGNED FOR INVESTIGATION BY RISK LEVEL/RESPONSE
TIME AND COUNTY FOR PERIOD OF OCTOBER 1, 2010 THROUGH MARCH 31, 2011**

COUNTY	HIGH/ RESPONSE TIME 1	MODERATE/ RESPONSE TIME 2	LOW/ RESPONSE TIME 3	POTENTIAL/ RESPONSE TIME 4	TOTAL	% OF TOTAL
APACHE	8	5	25	11	49	0.3%
COCHISE	54	65	184	81	384	2.2%
COCONINO	30	40	143	64	277	1.6%
GILA	28	28	71	30	157	0.9%
GRAHAM	11	25	39	21	96	0.6%
GREENLEE	3	3	8	3	17	0.1%
LA PAZ	4	8	18	7	37	0.2%
MARICOPA	1,563	1,697	4,827	2,129	10,216	58.7%
MOHAVE	79	105	255	112	551	3.2%
NAVAJO	40	37	137	32	246	1.4%
PIMA	432	547	1,656	662	3,297	19.0%
PINAL	166	186	517	217	1,086	6.3%
SANTA CRUZ	18	11	33	15	77	0.4%
YAVAPAI	66	85	234	100	485	2.8%
YUMA	60	67	185	91	403	2.3%
STATEWIDE	2,562	2,909	8,332	3,575	17,378	100.0%
% OF TOTAL	14.7%	16.7%	48.0%	20.6%	100.0%	

**CHART 6
NUMBER OF REPORTS ASSIGNED FOR INVESTIGATION BY TYPE OF MALTREATMENT
AND REPORTING PERIOD**

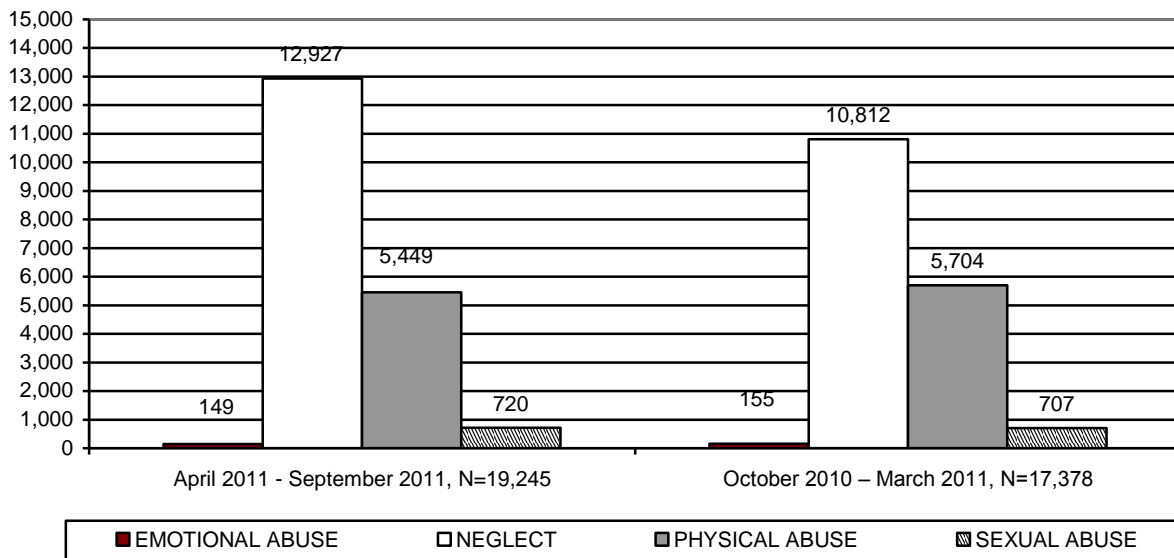


TABLE 8
NUMBER OF REPORTS ASSIGNED FOR INVESTIGATION BY TYPE OF MALTREATMENT
BY COUNTY FOR PERIOD OF APRIL 1, 2011 THROUGH SEPTEMBER 30, 2011

COUNTY	EMOTIONAL ABUSE	NEGLECT	PHYSICAL ABUSE	SEXUAL ABUSE	TOTAL	% OF TOTAL
APACHE	1	53	20	1	75	0.4%
COCHISE	2	288	99	22	411	2.1%
COCONINO	6	202	87	13	308	1.6%
GILA	2	122	37	6	167	0.9%
GRAHAM	0	68	29	7	104	0.5%
GREENLEE	0	7	6	0	13	0.1%
LA PAZ	3	41	16	1	61	0.3%
MARICOPA	77	7,460	3,266	387	11,190	58.1%
MOHAVE	2	456	153	24	635	3.3%
NAVAJO	3	151	69	11	234	1.2%
PIMA	30	2,454	946	119	3,549	18.4%
PINAL	13	918	422	81	1,434	7.5%
SANTA CRUZ	2	53	19	4	78	0.4%
YAVAPAI	5	377	134	34	550	2.9%
YUMA	3	277	146	10	436	2.3%
STATEWIDE	149	12,927	5,449	720	19,245	100.0%
% OF TOTAL	0.8%	67.2%	28.3%	3.7%	100.0%	

TABLE 9
NUMBER OF REPORTS ASSIGNED FOR INVESTIGATION BY TYPE OF MALTREATMENT
BY COUNTY FOR PERIOD OF OCTOBER 1, 2010 THROUGH MARCH 31, 2011

COUNTY	EMOTIONAL ABUSE	NEGLECT	PHYSICAL ABUSE	SEXUAL ABUSE	TOTAL	% OF TOTAL
APACHE	0	34	13	2	49	0.3%
COCHISE	3	235	123	23	384	2.2%
COCONINO	3	167	103	4	277	1.6%
GILA	2	118	34	3	157	0.9%
GRAHAM	0	65	28	3	96	0.6%
GREENLEE	0	11	5	1	17	0.1%
LA PAZ	0	26	9	2	37	0.2%
MARICOPA	91	6,306	3,394	425	10,216	58.7%
MOHAVE	4	365	155	27	551	3.2%
NAVAJO	2	168	68	8	246	1.4%
PIMA	30	2,082	1,076	109	3,297	19.0%
PINAL	13	630	396	47	1,086	6.3%
SANTA CRUZ	0	47	23	7	77	0.4%
YAVAPAI	4	293	160	28	485	2.8%
YUMA	3	265	117	18	403	2.3%
STATEWIDE	155	10,812	5,704	707	17,378	100.0%
% OF TOTAL	0.9%	62.2%	32.8%	4.1%	100.0%	

During this reporting period, there were 19,245 reports assigned for investigation. Of these, CPS completed 9,953 investigations or 51.7 percent. Investigations not completed remain open when the investigation is still in process, when the CPS specialist is waiting for the results of a law enforcement investigation and/or receipt of records that impact the investigation finding, or when the investigation has been completed but is awaiting supervisory review and approval.

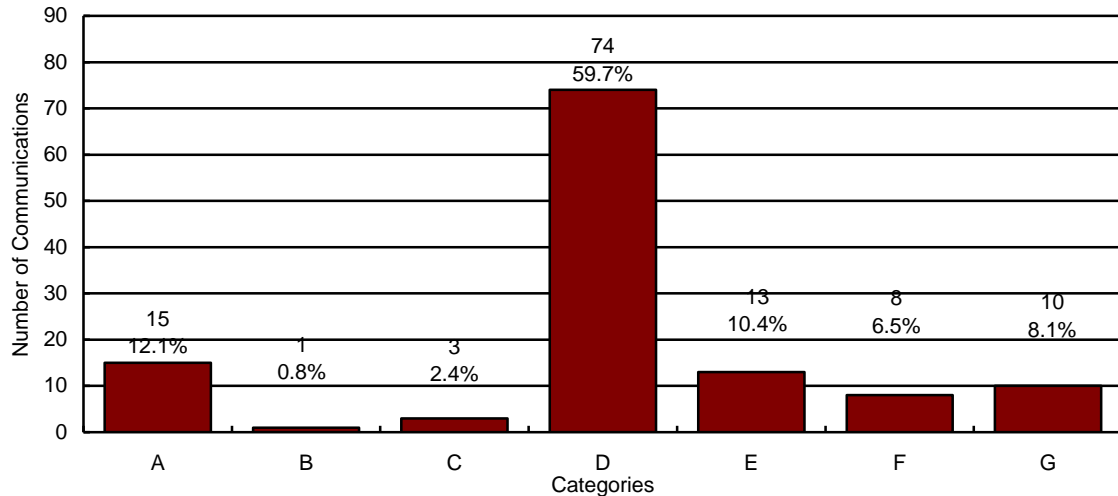
INVESTIGATIONS OF CHILD ABUSE AND NEGLECT

**TABLE 10
NUMBER OF REPORTS NOT RESPONDED TO BY RESPONSE TIME AND COUNTY FOR
PERIOD OF APRIL 1, 2011 THROUGH SEPTEMBER 30, 2011**

COUNTY	RESPONSE TIME 1	RESPONSE TIME 2	RESPONSE TIME 3	RESPONSE TIME 4	TOTAL	% OF TOTAL
APACHE	0	0	0	0	0	0.0%
COCHISE	0	0	0	0	0	0.0%
COCONINO	0	0	0	0	0	0.0%
GILA	0	0	0	0	0	0.0%
GRAHAM	0	0	0	0	0	0.0%
GREENLEE	0	0	0	0	0	0.0%
LA PAZ	0	0	0	0	0	0.0%
MARICOPA	0	0	98	70	168	92.3%
MOHAVE	0	0	0	0	0	0.0%
NAVAJO	0	0	0	0	0	0.0%
PIMA	0	0	0	0	0	0.0%
PINAL	0	0	9	5	14	7.7%
SANTA CRUZ	0	0	0	0	0	0.0%
YAVAPAI	0	0	0	0	0	0.0%
YUMA	0	0	0	0	0	0.0%
STATEWIDE	0	0	107	75	182	100.0%
% OF TOTAL	0.0%	0.0%	58.8%	41.2%	100.0%	

By statute, a random sample of reports not responded to for the period is required. In addition, short descriptions of these reports are also required. For the current reporting period there were 182 reports that were not responded to. A random sample of 124 reports not responded to were reviewed. Chart 7 displays the 124 reports in brief descriptive categories.

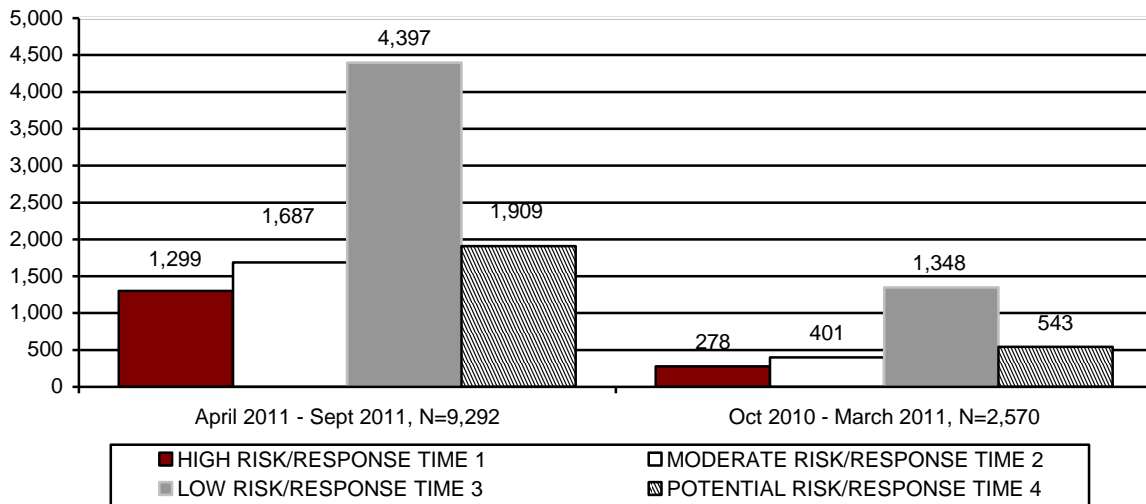
CHART 7
NUMBER OF REPORTS NOT RESPONDED TO BY CATEGORY FOR THE PERIOD OF
APRIL 1, 2011 THROUGH SEPTEMBER 30, 2011



N=124

- A = Adolescent, Past Abuse, No Current Injuries**
- B = Inadequate Housekeeping Standards**
- C = Inappropriate Vehicle Operation**
- D = No Specific Allegations**
- E = Past Abuse no current injuries**
- F = Adolescent, current minor injuries**
- G = Non-adolescent, current minor injuries**

CHART 8
NUMBER OF REPORTS ASSIGNED FOR INVESTIGATION BY RISK LEVEL/RESPONSE
TIME AND REPORTING PERIOD FOR REPORTS STILL OPEN FOR INVESTIGATION



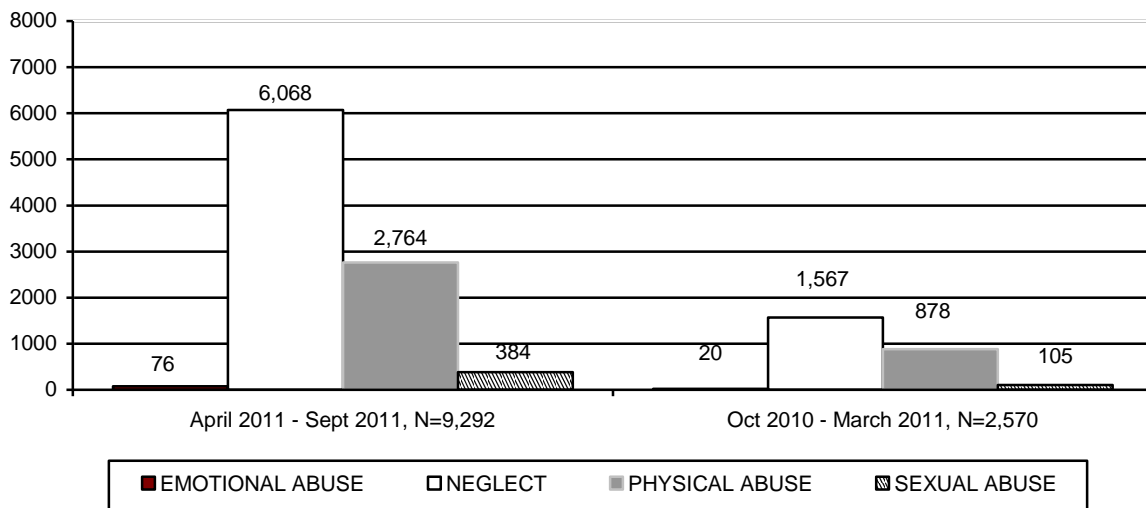
**TABLE 11
NUMBER OF REPORTS BY RESPONSE TIME AND COUNTY FOR REPORTS STILL OPEN
FOR INVESTIGATION FOR PERIOD OF APRIL 1, 2011 THROUGH SEPTEMBER 30, 2011**

COUNTY	RESPONSE TIME 1	RESPONSE TIME 2	RESPONSE TIME 3	RESPONSE TIME 4	TOTAL	% OF TOTAL
APACHE	9	5	26	14	54	0.6%
COCHISE	46	40	94	36	216	2.3%
COCONINO	27	34	95	27	183	2.0%
GILA	10	15	29	17	71	0.8%
GRAHAM	7	17	26	17	67	0.7%
GREENLEE	0	3	2	2	7	0.1%
LA PAZ	3	4	6	3	16	0.2%
MARICOPA	852	1,033	2,626	1,125	5,636	60.6%
MOHAVE	64	64	189	90	407	4.4%
NAVAJO	12	24	37	19	92	1.0%
PIMA	120	216	709	270	1,315	14.2%
PINAL	98	162	409	216	885	9.5%
SANTA CRUZ	5	13	16	5	39	0.4%
YAVAPAI	31	31	62	37	161	1.7%
YUMA	15	26	71	31	143	1.5%
STATEWIDE	1,299	1,687	4,397	1,909	9,292	100.0%
% OF TOTAL	14.0%	18.2%	47.3%	20.5%	100.0%	

**TABLE 12
NUMBER OF REPORTS BY RISK LEVEL/RESPONSE TIME AND COUNTY FOR REPORTS
STILL OPEN FOR INVESTIGATION FOR PERIOD OF OCTOBER 1, 2010 THROUGH
MARCH 31, 2011**

COUNTY	HIGH/ RESPONSE TIME 1	MODERATE/ RESPONSE TIME 2	LOW/ RESPONSE TIME 3	POTENTIAL/ RESPONSE TIME 4	TOTAL	% OF TOTAL
APACHE	3	2	5	2	12	0.5%
COCHISE	7	10	22	9	48	1.9%
COCONINO	1	0	9	2	12	0.5%
GILA	1	2	5	3	11	0.4%
GRAHAM	2	3	5	2	12	0.5%
GREENLEE	1	0	1	0	2	0.1%
LA PAZ	0	1	8	2	11	0.4%
MARICOPA	149	218	766	298	1,431	55.6%
MOHAVE	24	41	87	40	192	7.5%
NAVAJO	7	3	22	2	34	1.3%
PIMA	55	81	274	111	521	20.2%
PINAL	17	29	102	55	203	7.9%
SANTA CRUZ	4	2	8	3	17	0.7%
YAVAPAI	3	7	22	14	46	1.8%
YUMA	4	2	12	0	18	0.7%
STATEWIDE	278	401	1,348	543	2,570	100.0%
% OF TOTAL	10.8%	15.6%	52.5%	21.1%	100.0%	

**CHART 9
NUMBER OF REPORTS ASSIGNED FOR INVESTIGATION BY TYPE OF MALTREATMENT
FOR REPORTS STILL OPEN FOR INVESTIGATION**



**TABLE 13
NUMBER OF REPORTS BY TYPE OF MALTREATMENT AND COUNTY FOR REPORTS
STILL OPEN FOR INVESTIGATION FOR PERIOD OF
APRIL 1, 2011 THROUGH SEPTEMBER 30, 2011**

COUNTY	EMOTIONAL ABUSE	NEGLECT	PHYSICAL ABUSE	SEXUAL ABUSE	TOTAL	% OF TOTAL
APACHE	1	37	15	1	54	0.6%
COCHISE	1	153	50	12	216	2.3%
COCONINO	3	126	48	6	183	2.0%
GILA	1	48	17	5	71	0.8%
GRAHAM	0	44	19	4	67	0.7%
GREENLEE	0	5	2	0	7	0.1%
LA PAZ	0	13	3	0	16	0.2%
MARICOPA	37	3,611	1,765	223	5,636	60.6%
MOHAVE	2	296	94	15	407	4.4%
NAVAJO	0	52	34	6	92	1.0%
PIMA	18	890	360	47	1,315	14.2%
PINAL	7	561	271	46	885	9.5%
SANTA CRUZ	2	26	7	4	39	0.4%
YAVAPAI	2	115	35	9	161	1.7%
YUMA	2	91	44	6	143	1.5%
STATEWIDE	76	6,068	2,764	384	9,292	100.0%
% OF TOTAL	0.8%	65.3%	29.8%	4.1%	100.0%	

TABLE 14
NUMBER OF REPORTS BY TYPE OF MALTREATMENT AND COUNTY FOR REPORTS
STILL OPEN FOR INVESTIGATION FOR PERIOD OF
OCTOBER 1, 2010 THROUGH MARCH 31, 2011

COUNTY	EMOTIONAL ABUSE	NEGLECT	PHYSICAL ABUSE	SEXUAL ABUSE	TOTAL	% OF TOTAL
APACHE	0	11	1	0	12	0.5%
COCHISE	0	31	13	4	48	1.9%
COCONINO	0	6	5	1	12	0.5%
GILA	0	8	3	0	11	0.4%
GRAHAM	0	9	3	0	12	0.5%
GREENLEE	0	2	0	0	2	0.1%
LA PAZ	0	8	2	1	11	0.4%
MARICOPA	9	839	521	62	1,431	55.6%
MOHAVE	2	133	47	10	192	7.5%
NAVAJO	0	19	14	1	34	1.3%
PIMA	8	317	184	12	521	20.2%
PINAL	1	130	63	9	203	7.9%
SANTA CRUZ	0	11	3	3	17	0.7%
YAVAPAI	0	27	17	2	46	1.8%
YUMA	0	16	2	0	18	0.7%
STATEWIDE	20	1,567	878	105	2,570	100.0%
% OF TOTAL	0.8%	60.9%	34.2%	4.1%	100.0%	

CHART 10
NUMBER OF REPORTS ASSIGNED FOR INVESTIGATION WHERE A REMOVAL OCCURRED

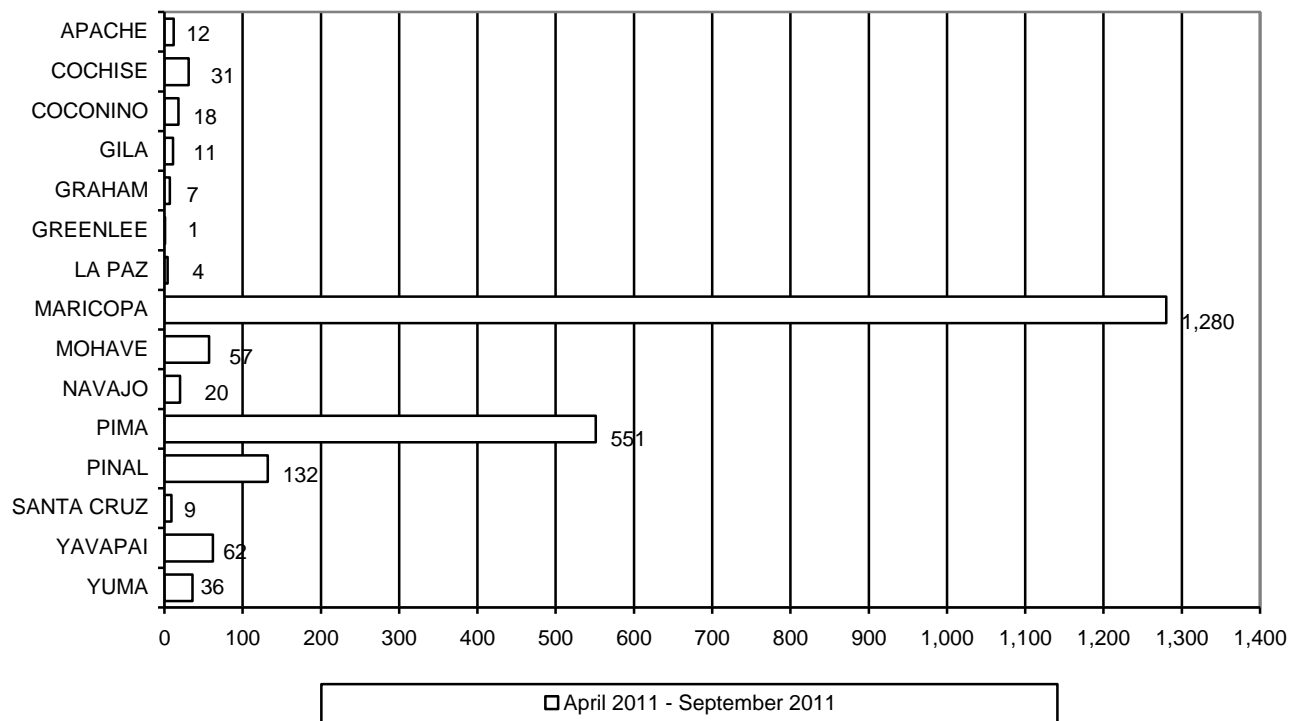


TABLE 15
NUMBER OF REPORTS ASSIGNED FOR INVESTIGATION BY COUNTY WHERE A
REMOVAL OCCURRED FOR THE PERIOD APRIL 1, 2011 THROUGH SEPTEMBER 30, 2011

COUNTY	NUMBER OF REPORTS ASSIGNED	NUMBER OF REPORTS ASSIGNED WITH A REMOVAL	% OF REPORTS WHERE A CHILD WAS PLACED IN OUT-OF-HOME CARE
APACHE	75	12	16.0%
COCHISE	411	31	7.5%
COCONINO	308	18	5.8%
GILA	167	11	6.6%
GRAHAM	104	7	6.7%
GREENLEE	13	1	7.7%
LA PAZ	61	4	6.6%
MARICOPA	11,190	1,280	11.4%
MOHAVE	635	57	9.0%
NAVAJO	234	20	8.5%
PIMA	3,549	551	15.5%
PINAL	1,434	132	9.2%
SANTA CRUZ	78	9	11.5%
YAVAPAI	550	62	11.3%
YUMA	436	36	8.3%
STATEWIDE	19,245	2,231	11.6%

TABLE 16
NUMBER OF REPORTS ASSIGNED FOR INVESTIGATION BY COUNTY WHERE A
REMOVAL OCCURRED FOR THE PERIOD OCTOBER 1, 2010 THROUGH MARCH 31, 2011

COUNTY	NUMBER OF REPORTS ASSIGNED	NUMBER OF REPORTS ASSIGNED WITH A REMOVAL	% OF REPORTS WHERE A CHILD WAS PLACED IN OUT-OF-HOME CARE
APACHE	49	9	18.4%
COCHISE	384	38	9.9%
COCONINO	277	19	6.9%
GILA	157	21	13.4%
GRAHAM	96	8	8.3%
GREENLEE	17	1	5.9%
LA PAZ	37	6	16.2%
MARICOPA	10,216	1,043	10.2%
MOHAVE	551	58	10.5%
NAVAJO	246	25	10.2%
PIMA	3,297	480	14.6%
PINAL	1,086	100	9.2%
SANTA CRUZ	77	5	6.5%
YAVAPAI	485	50	10.3%
YUMA	403	19	4.7%
STATEWIDE	17,379	1,882	10.8%

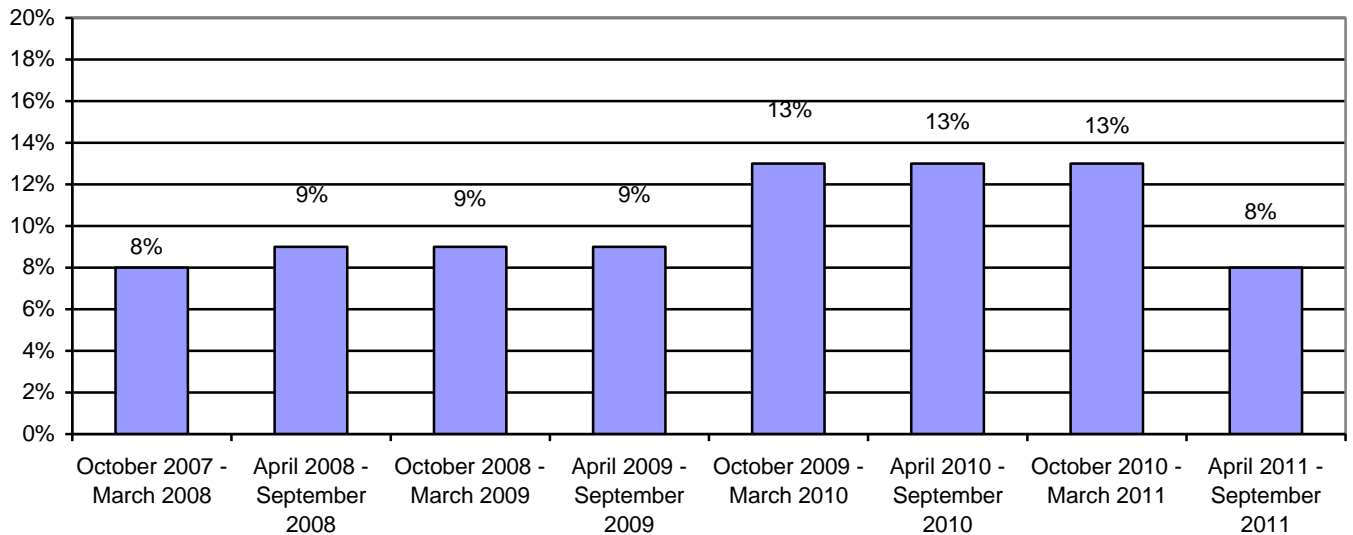
COMPLETED INVESTIGATIONS

Substantiated reports are reports where the Department has determined that at least one of the allegations in the report of abuse and neglect is true. The number of reports that are considered substantiated are a subset of the total number of reports that were received, investigated, and closed during the reporting period.

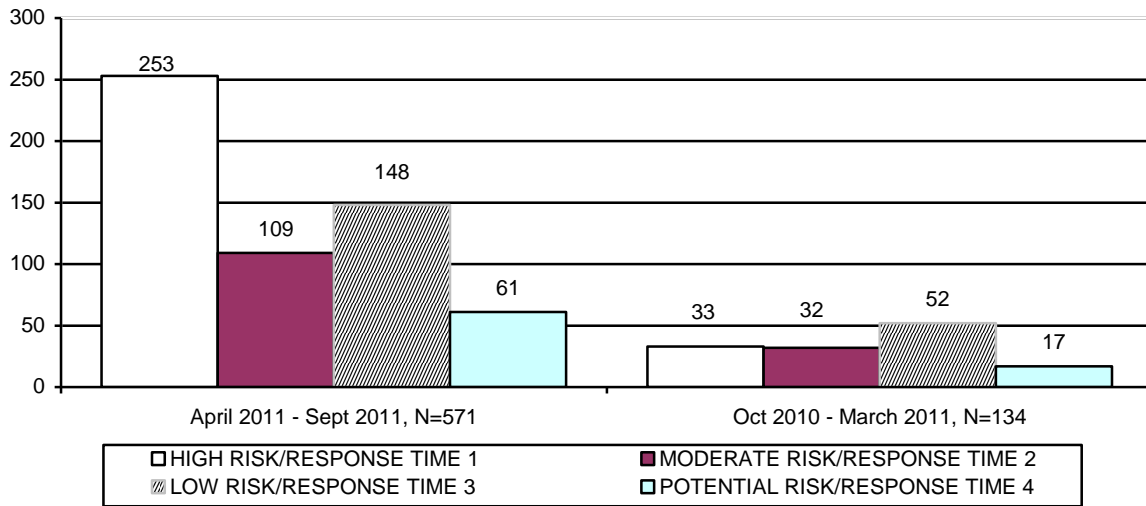
The preliminary number of CPS reports that are substantiated for this reporting period is 1,465. For the prior reporting period, the number of CPS reports that were assigned for investigation that resulted in substantiated findings was revised from 1,366 to 2,274 to reflect subsequent decisions based on parents’ rights to due process. For the current reporting period, 41.5 percent of substantiated investigative findings were classified as response time 1, 22.7 percent as response time 2, 26.0 percent as response time 3, and 9.8 percent as response time 4. Prior to October 1, 2009 potential risk reports were not substantiated by CPS. For the prior reporting period, 36.8 percent of substantiated investigative findings were classified as high risk/response time 1, 23.0 percent as moderate risk/response time 2, 31.1 percent as low risk/response time 3, and 9.1 percent as potential risk/response time 4.

- There were 19,245 reports received during the current reporting period that were subject to substantiation. This results in a preliminary substantiation rate of 8 percent for the current reporting period.
- There were 17,379 reports received during the prior reporting period that were subject to substantiation. This results in a 13 percent substantiation rate for the prior reporting period.

**CHART 11
SUBSTANTIATION RATE BY REPORTING PERIOD**



**CHART 12
NUMBER OF REPORTS ASSIGNED FOR INVESTIGATION BY RISK LEVEL/RESPONSE TIME AND REPORTING PERIOD THAT RESULTED IN PROPOSED SUBSTANTIATION**



**TABLE 17
NUMBER OF REPORTS ASSIGNED FOR INVESTIGATION BY RESPONSE TIME AND COUNTY THAT RESULTED IN PROPOSED SUBSTANTIATION FOR PERIOD OF APRIL 1, 2011 THROUGH SEPTEMBER 30, 2011**

COUNTY	RESPONSE TIME 1	RESPONSE TIME 2	RESPONSE TIME 3	RESPONSE TIME 4	TOTAL	% OF TOTAL
APACHE	1	1	1	0	3	0.5%
COCHISE	0	1	0	0	1	0.2%
COCONINO	1	0	1	0	2	0.4%
GILA	0	1	0	0	1	0.2%
GRAHAM	0	0	1	0	1	0.2%
GREENLEE	0	0	0	0	0	0.0%
LA PAZ	4	1	1	0	6	1.1%
MARICOPA	159	60	80	48	347	60.5%
MOHAVE	14	6	5	2	27	4.7%
NAVAJO	4	4	2	0	10	1.8%
PIMA	31	23	33	6	93	16.3%
PINAL	6	3	7	1	17	3.0%
SANTA CRUZ	2	0	0	0	2	0.4%
YAVAPAI	12	4	7	1	24	4.2%
YUMA	19	5	10	3	37	6.5%
STATEWIDE	253	109	148	61	571	100.0%
% OF TOTAL	44.3%	19.1%	25.9%	10.7%	100.0%	

TABLE 18
NUMBER OF REPORTS ASSIGNED FOR INVESTIGATION BY RISK LEVEL/RESPONSE TIME AND COUNTY THAT RESULTED IN PROPOSED SUBSTANTIATION FOR PERIOD OF OCTOBER 1, 2010 THROUGH MARCH 31, 2011

COUNTY	HIGH/RESPONSE TIME 1	MODERATE/RESPONSE TIME 2	LOW/RESPONSE TIME 3	POTENTIAL/RESPONSE TIME 4	TOTAL	% OF TOTAL
APACHE	0	0	1	0	1	0.8%
COCHISE	1	0	1	0	2	1.5%
COCONINO	1	2	1	0	4	3.0%
GILA	0	0	0	0	0	0.0%
GRAHAM	1	1	0	0	2	1.5%
GREENLEE	0	0	0	0	0	0.0%
LA PAZ	0	2	2	0	4	3.0%
MARICOPA	19	20	31	11	81	60.4%
MOHAVE	3	1	3	1	8	6.0%
NAVAJO	0	1	0	0	1	0.8%
PIMA	2	3	5	0	10	7.4%
PINAL	3	0	2	0	5	3.7%
SANTA CRUZ	0	0	0	0	0	0.0%
YAVAPAI	3	1	4	1	9	6.7%
YUMA	0	1	2	4	7	5.2%
STATEWIDE	33	32	52	17	134	100.0%
% OF TOTAL	24.6%	23.9%	38.8%	12.7%	100.0%	

CHART 13
NUMBER OF REPORTS ASSIGNED FOR INVESTIGATION BY TYPE OF MALTREATMENT THAT RESULTED IN PROPOSED SUBSTANTIATION

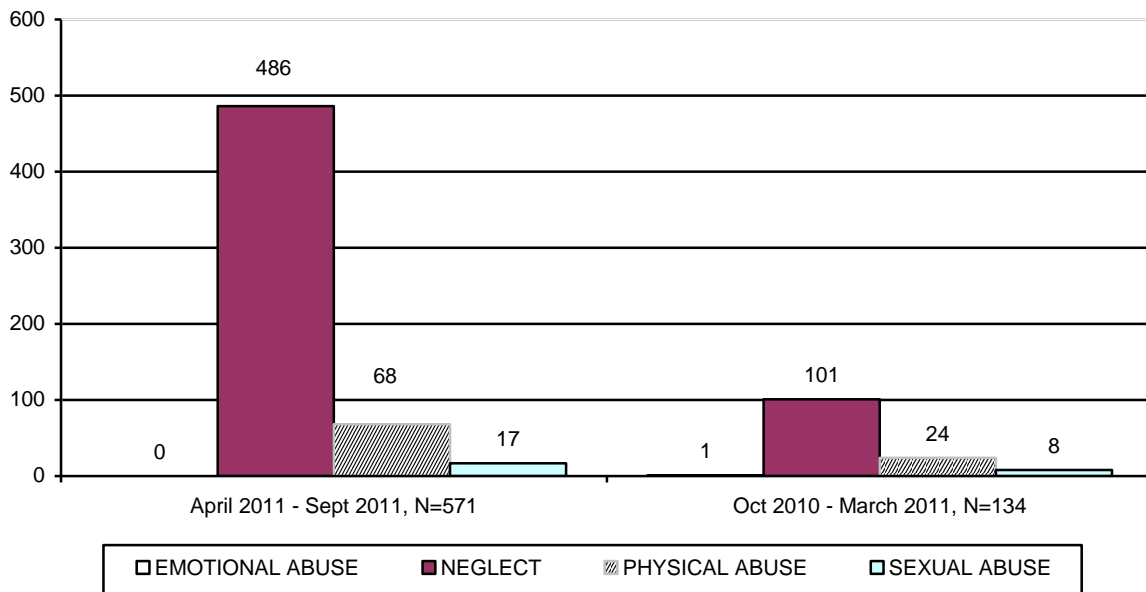


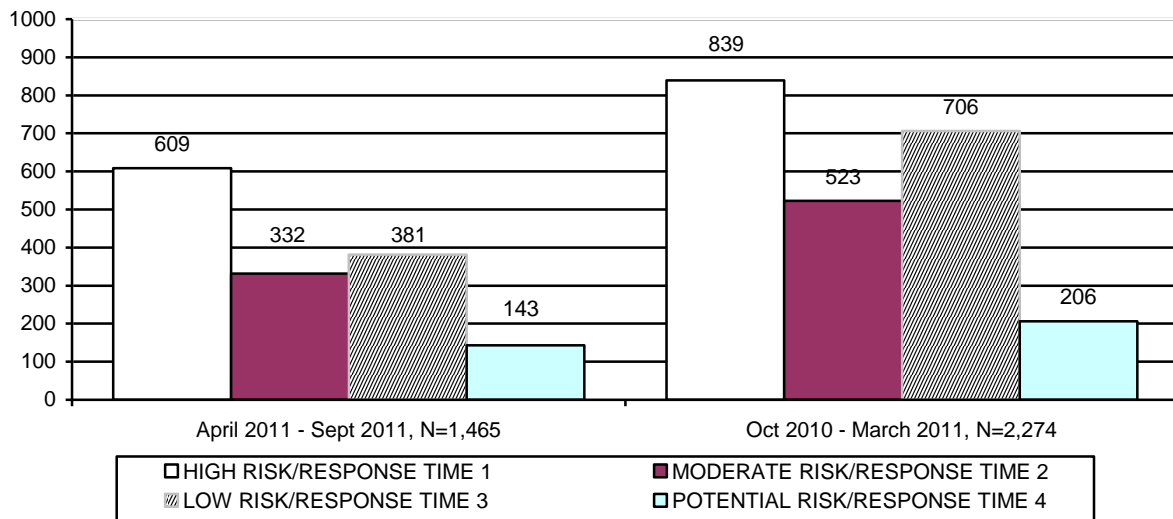
TABLE 19
NUMBER OF REPORTS ASSIGNED FOR INVESTIGATION BY TYPE OF MALTREATMENT
BY COUNTY THAT RESULTED IN PROPOSED SUBSTANTIATION FOR PERIOD OF
APRIL 1, 2011 THROUGH SEPTEMBER 30, 2011

COUNTY	EMOTIONAL ABUSE	NEGLECT	PHYSICAL ABUSE	SEXUAL ABUSE	TOTAL	% OF TOTAL
APACHE	0	2	1	0	3	0.5%
COCHISE	0	1	0	0	1	0.2%
COCONINO	0	2	0	0	2	0.4%
GILA	0	1	0	0	1	0.2%
GRAHAM	0	1	0	0	1	0.2%
GREENLEE	0	0	0	0	0	0.0%
LA PAZ	0	5	0	1	6	1.1%
MARICOPA	0	298	41	8	347	60.5%
MOHAVE	0	24	0	3	27	4.7%
NAVAJO	0	8	2	0	10	1.8%
PIMA	0	81	11	1	93	16.3%
PINAL	0	14	3	0	17	3.0%
SANTA CRUZ	0	2	0	0	2	0.4%
YAVAPAI	0	18	4	2	24	4.2%
YUMA	0	29	6	2	37	6.5%
STATEWIDE	0	486	68	17	571	100.0%
% OF TOTAL	0.0%	85.1%	11.9%	3.0%	100.0%	

TABLE 20
NUMBER OF REPORTS ASSIGNED FOR INVESTIGATION BY TYPE OF MALTREATMENT
BY COUNTY THAT RESULTED IN PROPOSED SUBSTANTIATION FOR PERIOD OF
OCTOBER 1, 2010 THROUGH MARCH 31, 2011

COUNTY	EMOTIONAL ABUSE	NEGLECT	PHYSICAL ABUSE	SEXUAL ABUSE	TOTAL	% OF TOTAL
APACHE	0	1	0	0	1	0.8%
COCHISE	0	2	0	0	2	1.5%
COCONINO	0	2	2	0	4	3.0%
GILA	0	0	0	0	0	0.0%
GRAHAM	0	1	1	0	2	1.5%
GREENLEE	0	0	0	0	0	0.0%
LA PAZ	0	3	1	0	4	3.0%
MARICOPA	0	60	15	6	81	60.4%
MOHAVE	0	7	1	0	8	6.0%
NAVAJO	0	1	0	0	1	0.8%
PIMA	0	8	2	0	10	7.4%
PINAL	0	5	0	0	5	3.7%
SANTA CRUZ	0	0	0	0	0	0.0%
YAVAPAI	0	6	2	1	9	6.7%
YUMA	1	5	0	1	7	5.2%
STATEWIDE	1	101	24	8	134	100.0%
% OF TOTAL	0.8%	75.3%	17.9%	6.0%	100.0%	

**CHART 14
NUMBER OF REPORTS ASSIGNED FOR INVESTIGATION BY RISK LEVEL/RESPONSE
TIME AND REPORTING PERIOD THAT RESULTED IN
SUBSTANTIATION**



**TABLE 21
NUMBER OF REPORTS ASSIGNED FOR INVESTIGATION BY RESPONSE TIME AND
COUNTY THAT RESULTED IN SUBSTANTIATION FOR PERIOD OF
APRIL 1, 2011 THROUGH SEPTEMBER 30, 2011**

COUNTY	RESPONSE TIME 1	RESPONSE TIME 2	RESPONSE TIME 3	RESPONSE TIME 4	TOTAL	% OF TOTAL
APACHE	0	0	0	0	0	0.0%
COCHISE	5	3	1	0	9	0.6%
COCONINO	3	1	3	0	7	0.5%
GILA	1	2	4	0	7	0.5%
GRAHAM	0	0	0	0	0	0.0%
GREENLEE	0	0	0	0	0	0.0%
LA PAZ	0	0	0	0	0	0.0%
MARICOPA	389	178	205	106	878	59.9%
MOHAVE	10	5	2	0	17	1.2%
NAVAJO	2	0	0	0	2	0.1%
PIMA	133	102	130	29	394	26.9%
PINAL	45	28	17	5	95	6.5%
SANTA CRUZ	1	0	2	0	3	0.2%
YAVAPAI	15	10	12	1	38	2.6%
YUMA	5	3	5	2	15	1.0%
STATEWIDE	609	332	381	143	1,465	100.0%
% OF TOTAL	41.5%	22.7%	26.0%	9.8%	100.0%	

TABLE 22
NUMBER OF REPORTS ASSIGNED FOR INVESTIGATION BY RISK LEVEL/RESPONSE
TIME AND COUNTY THAT RESULTED IN SUBSTANTIATION FOR PERIOD OF
OCTOBER 1, 2010 THROUGH MARCH 31, 2011

COUNTY	HIGH/ RESPONSE TIME 1	MODERATE/ RESPONSE TIME 2	LOW/ RESPONSE TIME 3	POTENTIAL/ RESPONSE TIME 4	TOTAL	% OF TOTAL
APACHE	1	0	2	0	3	0.1%
COCHISE	12	9	6	0	27	1.2%
COCONINO	5	8	12	2	27	1.2%
GILA	9	3	9	3	24	1.1%
GRAHAM	3	5	2	0	10	0.4%
GREENLEE	1	0	1	0	2	0.1%
LA PAZ	0	1	0	0	1	<0.1%
MARICOPA	547	285	397	154	1,383	60.7%
MOHAVE	23	16	14	3	56	2.5%
NAVAJO	5	3	3	0	11	0.5%
PIMA	143	131	183	33	490	21.5%
PINAL	52	32	34	4	122	5.4%
SANTA CRUZ	0	4	2	0	6	0.3%
YAVAPAI	21	18	28	3	70	3.1%
YUMA	17	8	13	4	42	1.9%
STATEWIDE	839	523	706	206	2,274	100.0%
% OF TOTAL	36.8%	23.0%	31.1%	9.1%	100.0%	

CHART 15
NUMBER OF REPORTS ASSIGNED FOR INVESTIGATION BY TYPE OF MALTREATMENT
THAT RESULTED IN SUBSTANTIATION

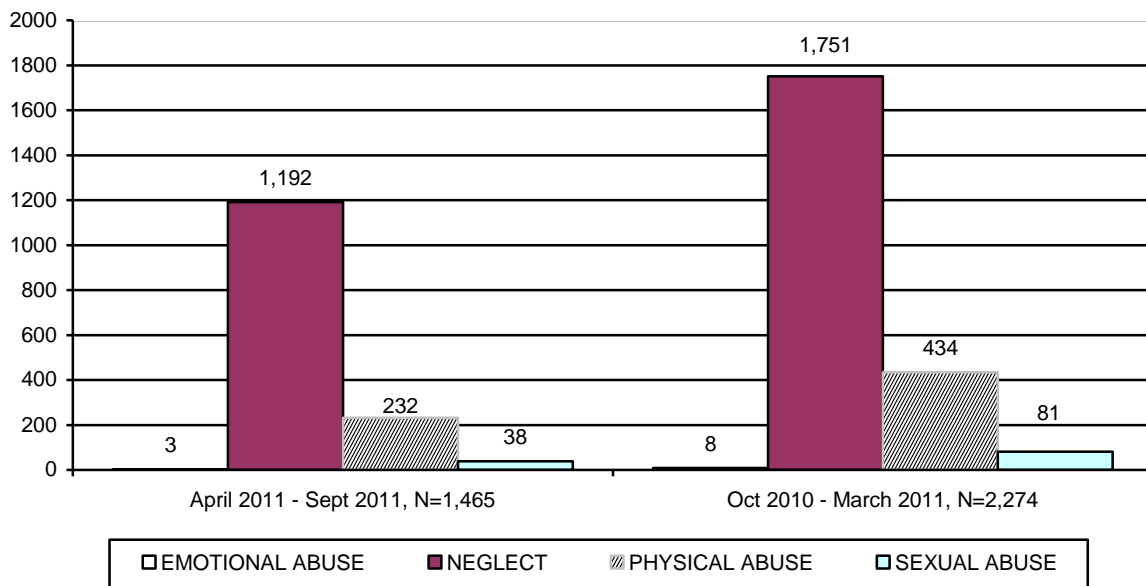


TABLE 23
NUMBER OF REPORTS ASSIGNED FOR INVESTIGATION BY TYPE OF MALTREATMENT
BY COUNTY THAT RESULTED IN SUBSTANTIATION FOR PERIOD OF
APRIL 1, 2011 THROUGH SEPTEMBER 30, 2011

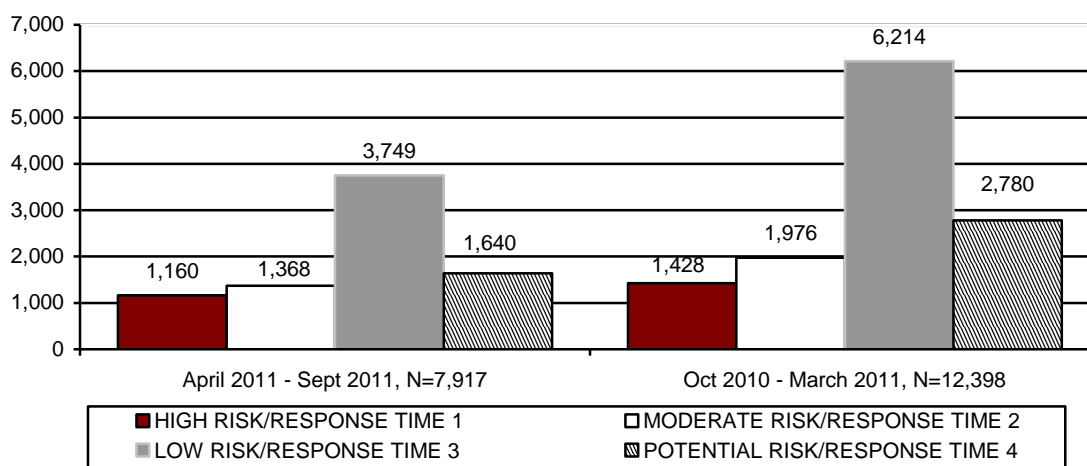
COUNTY	EMOTIONAL ABUSE	NEGLECT	PHYSICAL ABUSE	SEXUAL ABUSE	TOTAL	% OF TOTAL
APACHE	0	0	0	0	0	0.0%
COCHISE	0	9	0	0	9	0.6%
COCONINO	0	4	2	1	7	0.5%
GILA	0	7	0	0	7	0.5%
GRAHAM	0	0	0	0	0	0.0%
GREENLEE	0	0	0	0	0	0.0%
LA PAZ	0	0	0	0	0	0.0%
MARICOPA	1	726	135	16	878	59.9%
MOHAVE	0	14	3	0	17	1.2%
NAVAJO	0	2	0	0	2	0.1%
PIMA	1	310	67	16	394	26.9%
PINAL	0	75	15	5	95	6.5%
SANTA CRUZ	0	3	0	0	3	0.2%
YAVAPAI	1	34	3	0	38	2.6%
YUMA	0	8	7	0	15	1.0%
STATEWIDE	3	1,192	232	38	1,465	100.0%
% OF TOTAL	0.2%	81.4%	15.8%	2.6%	100.0%	

TABLE 24
NUMBER OF REPORTS ASSIGNED FOR INVESTIGATION BY TYPE OF MALTREATMENT
BY COUNTY THAT RESULTED IN SUBSTANTIATION FOR PERIOD OF
OCTOBER 1, 2010 THROUGH MARCH 31, 2011

COUNTY	EMOTIONAL ABUSE	NEGLECT	PHYSICAL ABUSE	SEXUAL ABUSE	TOTAL	% OF TOTAL
APACHE	0	3	0	0	3	0.1%
COCHISE	0	22	4	1	27	1.2%
COCONINO	0	21	5	1	27	1.2%
GILA	0	20	4	0	24	1.1%
GRAHAM	0	7	2	1	10	0.4%
GREENLEE	0	0	2	0	2	0.1%
LA PAZ	0	0	1	0	1	<0.1%
MARICOPA	5	1,081	247	50	1,383	60.7%
MOHAVE	0	46	8	2	56	2.5%
NAVAJO	0	10	1	0	11	0.5%
PIMA	1	373	101	15	490	21.5%
PINAL	1	87	30	4	122	5.4%
SANTA CRUZ	0	5	1	0	6	0.3%
YAVAPAI	1	45	18	6	70	3.1%
YUMA	0	31	10	1	42	1.9%
STATEWIDE	8	1,751	434	81	2,274	100.0%
% OF TOTAL	0.4%	76.9%	19.1%	3.6%	100.0%	

The preliminary number of CPS investigations that resulted in an unsubstantiated finding for this reporting period was 7,917. For the prior reporting period, the number of CPS reports that were unsubstantiated was revised from 6,674 to 12,398 to reflect updated information in the CHILDS case management information system. For the prior reporting period, 11.5 percent of unsubstantiated reports were classified as high risk/response time 1, 15.9 percent as moderate risk/response time 2, 50.2 percent as low risk/response time 3, and 22.4 percent as potential risk/response time 4. One percent of these unsubstantiated reports related to emotional abuse, 59.8 percent to neglect, 35.1 percent to physical abuse, and 4.1 percent to sexual abuse.

**CHART 16
NUMBER OF REPORTS ASSIGNED FOR INVESTIGATION BY RISK LEVEL/RESPONSE TIME AND REPORTING PERIOD THAT RESULTED IN UNSUBSTANTIATION**



**TABLE 25
NUMBER OF REPORTS ASSIGNED FOR INVESTIGATION BY RESPONSE TIME AND COUNTY THAT RESULTED IN UNSUBSTANTIATION FOR PERIOD OF APRIL 1, 2011 THROUGH SEPTEMBER 30, 2011**

COUNTY	RESPONSE TIME 1	RESPONSE TIME 2	RESPONSE TIME 3	RESPONSE TIME 4	TOTAL	% OF TOTAL
APACHE	2	3	11	2	18	0.2%
COCHISE	23	37	94	31	185	2.3%
COCONINO	14	20	57	25	116	1.5%
GILA	7	23	48	10	88	1.1%
GRAHAM	5	5	23	3	36	0.5%
GREENLEE	1	1	2	2	6	0.1%
LA PAZ	5	9	18	7	39	0.5%
MARICOPA	681	778	1,968	902	4,329	54.8%
MOHAVE	22	37	95	30	184	2.3%
NAVAJO	14	25	70	21	130	1.6%
PIMA	232	280	863	372	1,747	22.1%
PINAL	79	64	195	99	437	5.5%
SANTA CRUZ	4	4	20	6	34	0.4%
YAVAPAI	30	46	178	73	327	4.1%
YUMA	41	36	107	57	241	3.0%
STATEWIDE	1,160	1,368	3,749	1,640	7,917	100.0%
% OF TOTAL	14.7%	17.3%	47.3%	20.7%	100.0%	

TABLE 26
NUMBER OF REPORTS ASSIGNED FOR INVESTIGATION BY RISK LEVEL/RESPONSE
TIME AND COUNTY THAT RESULTED IN UNSUBSTANTIATION FOR PERIOD OF
OCTOBER 1, 2010 THROUGH MARCH 31, 2011

COUNTY	HIGH/ RESPONSE TIME 1	MODERATE/ RESPONSE TIME 2	LOW/ RESPONSE TIME 3	POTENTIAL/ RESPONSE TIME 4	TOTAL	% OF TOTAL
APACHE	4	3	17	9	33	0.3%
COCHISE	36	46	153	71	306	2.5%
COCONINO	24	30	122	60	236	1.9%
GILA	18	23	57	24	122	1.0%
GRAHAM	6	16	31	19	72	0.6%
GREENLEE	1	3	6	3	13	0.1%
LA PAZ	4	5	8	5	22	0.2%
MARICOPA	856	1,178	3,630	1,656	7,320	58.9%
MOHAVE	31	49	149	65	294	2.4%
NAVAJO	27	30	111	29	197	1.6%
PIMA	235	346	1,191	506	2,278	18.4%
PINAL	94	127	379	155	755	6.1%
SANTA CRUZ	14	5	23	12	54	0.4%
YAVAPAI	39	60	179	83	361	2.9%
YUMA	39	55	158	83	335	2.7%
STATEWIDE	1,428	1,976	6,214	2,780	12,398	100.0%
% OF TOTAL	11.5%	15.9%	50.2%	22.4%	100.0%	

CHART 17
NUMBER OF REPORTS ASSIGNED FOR INVESTIGATION BY TYPE OF MALTREATMENT
THAT RESULTED IN UNSUBSTANTIATION BY REPORTING PERIOD

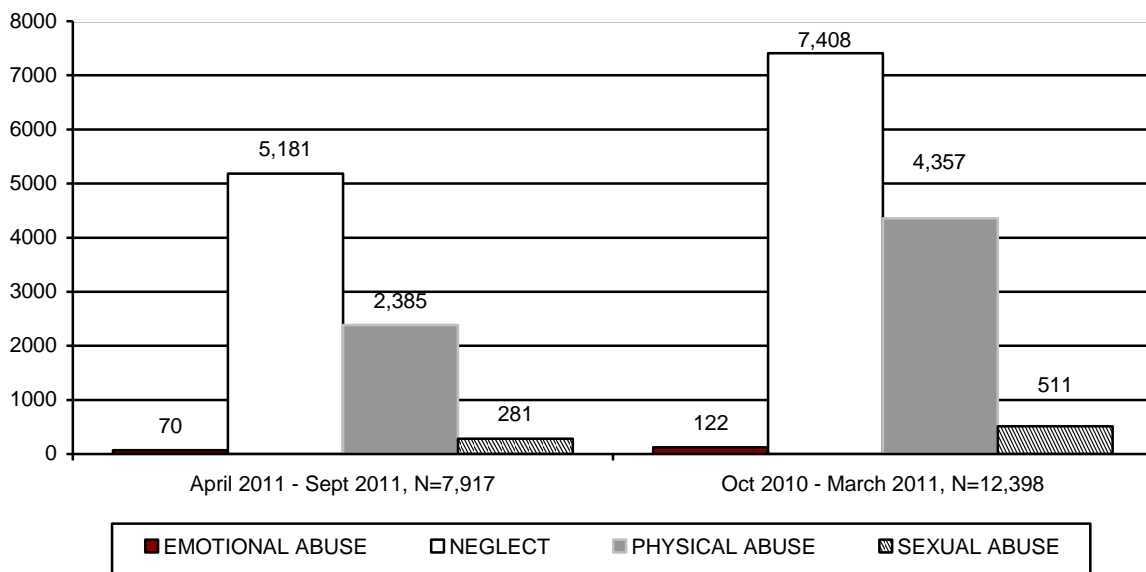


TABLE 27
NUMBER OF REPORTS ASSIGNED FOR INVESTIGATION BY TYPE OF MALTREATMENT
BY COUNTY THAT RESULTED IN UNSUBSTANTIATION FOR PERIOD OF
APRIL 1, 2011 THROUGH SEPTEMBER 30, 2011

COUNTY	EMOTIONAL ABUSE	NEGLECT	PHYSICAL ABUSE	SEXUAL ABUSE	TOTAL	% OF TOTAL
APACHE	0	14	4	0	18	0.2%
COCHISE	1	125	49	10	185	2.3%
COCONINO	3	70	37	6	116	1.5%
GILA	1	66	20	1	88	1.1%
GRAHAM	0	23	10	3	36	0.5%
GREENLEE	0	2	4	0	6	0.1%
LA PAZ	3	23	13	0	39	0.5%
MARICOPA	39	2,825	1,325	140	4,329	54.8%
MOHAVE	0	122	56	6	184	2.3%
NAVAJO	3	89	33	5	130	1.6%
PIMA	11	1,173	508	55	1,747	22.1%
PINAL	6	268	133	30	437	5.5%
SANTA CRUZ	0	22	12	0	34	0.4%
YAVAPAI	2	210	92	23	327	4.1%
YUMA	1	149	89	2	241	3.0%
STATEWIDE	70	5,181	2,385	281	7,917	100.0%
% OF TOTAL	0.9%	65.4%	30.1%	3.6%	100.0%	

TABLE 28
NUMBER OF REPORTS ASSIGNED FOR INVESTIGATION BY TYPE OF MALTREATMENT
BY COUNTY THAT RESULTED IN UNSUBSTANTIATION FOR PERIOD OF
OCTOBER 1, 2010 THROUGH MARCH 31, 2011

COUNTY	EMOTIONAL ABUSE	NEGLECT	PHYSICAL ABUSE	SEXUAL ABUSE	TOTAL	% OF TOTAL
APACHE	0	19	12	2	33	0.3%
COCHISE	1	183	105	17	306	2.5%
COCONINO	3	139	92	2	236	1.9%
GILA	2	90	27	3	122	1.0%
GRAHAM	0	48	22	2	72	0.6%
GREENLEE	0	9	3	1	13	0.1%
LA PAZ	0	15	6	1	22	0.2%
MARICOPA	76	4,329	2,608	307	7,320	58.9%
MOHAVE	2	178	100	14	294	2.4%
NAVAJO	2	136	52	7	197	1.6%
PIMA	20	1,391	784	83	2,278	18.4%
PINAL	11	410	301	33	755	6.1%
SANTA CRUZ	0	31	19	4	54	0.4%
YAVAPAI	3	216	123	19	361	2.9%
YUMA	2	214	103	16	335	2.7%
STATEWIDE	122	7,408	4,357	511	12,398	100.0%
% OF TOTAL	1.0%	59.8%	35.1%	4.1%	100.0%	

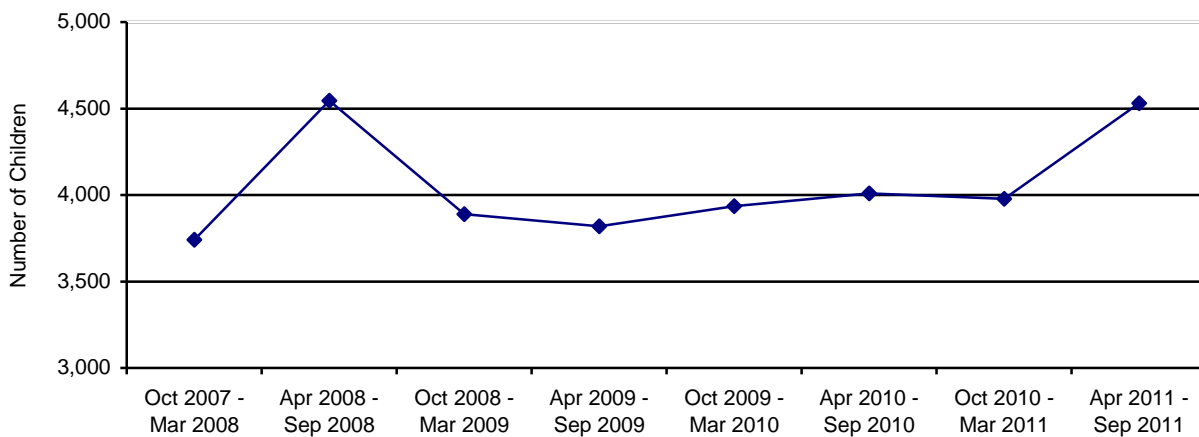
SAFE HAVEN INFANTS

There were no newborn infants delivered to Safe Haven providers during the April 2011 – September 2011 reporting period. This compares to one infant being delivered to Safe Haven providers during the October 2010 – March 2011 reporting period.

CHILDREN ENTERING OUT-OF-HOME CARE

During this reporting period, 4,531 children entered care as compared to 3,978 children for the October 2010 through March 2011 reporting period. Chart 18 displays children entering out-of-home care by reporting period.

**CHART 18
TOTAL CHILDREN ENTERING OUT-OF-HOME CARE BY REPORTING PERIOD**



CHILDREN ENTERING OUT-OF-HOME CARE – VOLUNTARY SERVICES

The number of children entering out-of-home placement through voluntary foster care agreements for this reporting period was 155, which represents 3.4 percent of the children entering care this reporting period. Table 29 shows the number of children entering out-of-home care through voluntary placements for the current reporting period by county. Voluntary foster care may be provided when the parents or legal guardians of a child have requested such assistance and have signed a legally binding written agreement, not to exceed 90 days, for the temporary placement of the child in foster care while risk factors are addressed to enable the child to live safely at home. A voluntary foster care agreement may be utilized only when the circumstances that brought the child into foster care are likely to be remedied within the 90 day period of time. A.R.S. § 8-806 authorizes the Department to provide voluntary foster care placement for children for a period not to exceed 90 days and no more than twice within 24 consecutive months.

TABLE 29
NUMBER OF CHILDREN ENTERING OUT-OF-HOME CARE BY COUNTY WHO ARE
VOLUNTARY PLACEMENTS FOR CHILDREN UNDER THE AGE OF EIGHTEEN FOR THE
PERIOD OF APRIL 1, 2011 THROUGH SEPTEMBER 30, 2011

COUNTY	NUMBER OF CHILDREN REMOVED	% OF TOTAL REMOVALS	NUMBER OF CHILDREN ENTERING OUT-OF-HOME CARE UNDER THE AGE OF EIGHTEEN WHO ARE VOLUNTARY PLACEMENTS	% OF CHILDREN REMOVED WHO ARE VOLUNTARY PLACEMENTS
APACHE	30	0.7%	0	0.0%
COCHISE	64	1.4%	2	1.3%
COCONINO	34	0.8%	5	3.2%
GILA	31	0.7%	0	0.0%
GRAHAM	22	0.5%	0	0.0%
GREENLEE	2	<0.1%	0	0.0%
LA PAZ	5	0.1%	0	0.0%
MARICOPA	2,682	59.2%	71	45.7%
MOHAVE	115	2.5%	7	4.5%
NAVAJO	42	0.9%	1	0.7%
PIMA	1,013	22.4%	61	39.4%
PINAL	280	6.2%	1	0.7%
SANTA CRUZ	19	0.4%	0	0.0%
YAVAPAI	116	2.6%	3	1.9%
YUMA	76	1.6%	4	2.6%
STATEWIDE	4,531	100.0%	155	100.0%

TABLE 30
NUMBER OF CHILDREN ENTERING OUT-OF-HOME CARE BY COUNTY WHO ARE
VOLUNTARY PLACEMENTS FOR CHILDREN UNDER THE AGE OF EIGHTEEN FOR THE
PERIOD OF OCTOBER 1, 2010 THROUGH MARCH 31, 2011

COUNTY	NUMBER OF CHILDREN REMOVED	% OF TOTAL REMOVALS	NUMBER OF CHILDREN ENTERING OUT-OF-HOME CARE UNDER THE AGE OF EIGHTEEN WHO ARE VOLUNTARY PLACEMENTS	% OF CHILDREN REMOVED WHO ARE VOLUNTARY PLACEMENTS
APACHE	26	0.7%	0	0.0%
COCHISE	82	2.1%	5	2.6%
COCONINO	55	1.4%	7	3.7%
GILA	40	1.0%	3	1.6%
GRAHAM	27	0.7%	0	0.0%
GREENLEE	4	0.1%	0	0.0%
LA PAZ	12	0.3%	2	1.0%
MARICOPA	2,238	56.2%	74	38.5%
MOHAVE	124	3.1%	7	3.7%
NAVAJO	69	1.7%	4	2.1%
PIMA	923	23.2%	59	30.7%
PINAL	214	5.4%	13	6.8%
SANTA CRUZ	14	0.4%	1	0.5%
YAVAPAI	113	2.8%	11	5.7%
YUMA	37	0.9%	6	3.1%
STATEWIDE	3,978	100.0%	192	100.0%

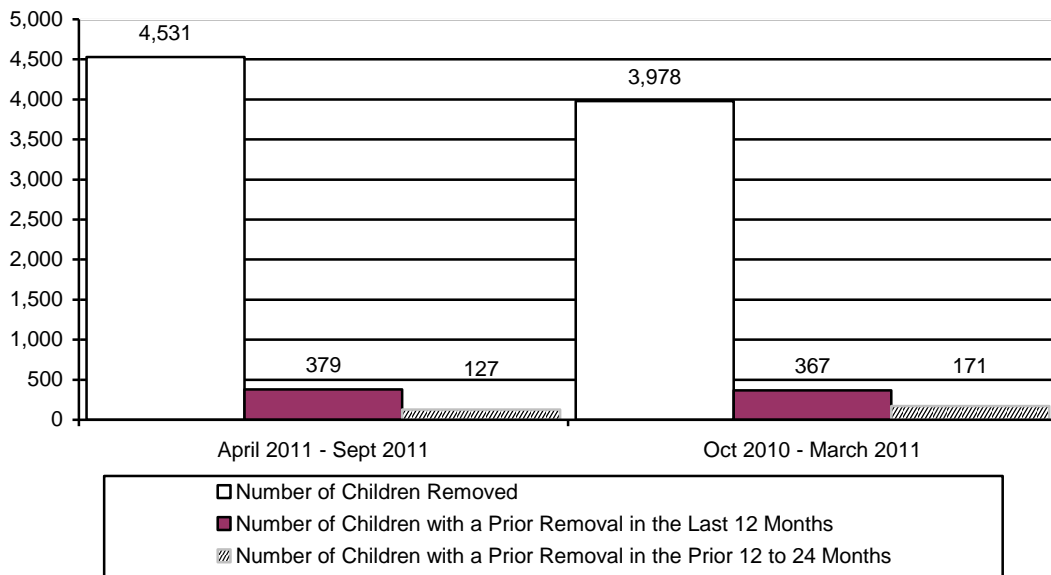
**TABLE 31
NUMBER OF CHILDREN ENTERING OUT-OF-HOME CARE BY COUNTY FOR THE
PERIOD OF APRIL 1, 2011 THROUGH SEPTEMBER 30, 2011**

COUNTY	NUMBER OF CHILDREN REMOVED	% OF TOTAL REMOVALS	NUMBER OF CHILDREN WITH A PRIOR REMOVAL IN THE LAST 12 MONTHS	% OF CHILDREN WITH A PRIOR REMOVAL IN THE LAST 12 MONTHS	NUMBER OF CHILDREN WITH A REMOVAL IN THE PRIOR 12 TO 24 MONTHS	% OF CHILDREN WITH A PRIOR REMOVAL IN THE PRIOR 12 TO 24 MONTHS
APACHE	30	0.7%	0	0.0%	0	0.0%
COCHISE	64	1.4%	0	0.0%	4	6.3%
COCONINO	34	0.8%	5	14.7%	0	0.0%
GILA	31	0.7%	9	29.0%	1	3.2%
GRAHAM	22	0.5%	4	18.2%	0	0.0%
GREENLEE	2	<0.1%	0	0.0%	0	0.0%
LA PAZ	5	0.1%	0	0.0%	0	0.0%
MARICOPA	2,682	59.2%	195	7.3%	77	2.9%
MOHAVE	115	2.5%	14	12.2%	2	1.7%
NAVAJO	42	0.9%	8	19.0%	3	7.1%
PIMA	1,013	22.4%	113	11.2%	28	2.8%
PINAL	280	6.2%	19	6.8%	7	2.5%
SANTA CRUZ	19	0.4%	1	5.3%	1	5.3%
YAVAPAI	116	2.6%	8	6.9%	1	0.9%
YUMA	76	1.6%	3	3.9%	3	3.9%
STATEWIDE	4,531	100.0%	379	8.4%	127	2.8%

TABLE 32
NUMBER OF CHILDREN ENTERING OUT-OF-HOME CARE BY COUNTY FOR THE PERIOD OF OCTOBER 1, 2010 THROUGH MARCH 31, 2011

COUNTY	NUMBER OF CHILDREN REMOVED	% OF TOTAL REMOVALS	NUMBER OF CHILDREN WITH A PRIOR REMOVAL IN THE LAST 12 MONTHS	% OF CHILDREN WITH A PRIOR REMOVAL IN THE LAST 12 MONTHS	NUMBER OF CHILDREN WITH A REMOVAL IN THE PRIOR 12 TO 24 MONTHS	% OF CHILDREN WITH A PRIOR REMOVAL IN THE PRIOR 12 TO 24 MONTHS
APACHE	26	0.7%	2	7.7%	0	0.0%
COCHISE	82	2.1%	3	3.7%	3	3.7%
COCONINO	55	1.4%	5	9.1%	0	0.0%
GILA	40	1.0%	4	10.0%	1	2.5%
GRAHAM	27	0.7%	0	0.0%	2	7.4%
GREENLEE	4	0.1%	0	0.0%	0	0.0%
LA PAZ	12	0.3%	1	8.3%	0	0.0%
MARICOPA	2,238	56.2%	214	9.6%	93	4.2%
MOHAVE	124	3.1%	4	3.2%	0	0.0%
NAVAJO	69	1.7%	10	14.5%	0	0.0%
PIMA	923	23.2%	95	10.3%	52	5.6%
PINAL	214	5.4%	21	9.8%	8	3.7%
SANTA CRUZ	14	0.4%	1	7.1%	0	0.0%
YAVAPAI	113	2.8%	7	6.2%	10	8.8%
YUMA	37	0.9%	0	0.0%	2	5.4%
STATEWIDE	3,978	100.0%	367	9.2%	171	4.3%

CHART 19
NUMBER OF CHILDREN ENTERING OUT-OF-HOME CARE BY REPORTING PERIOD



CHILDREN IN OUT-OF-HOME CARE

On September 30, 2011, there were 11,535 children in out-of-home care as compared to 10,707 children on March 31, 2011, an increase of 828 children. During this reporting period, 9,326 children or 80.7 percent were placed in family settings either with relatives or in foster homes. This compares to 8,759 or 81.9 percent of the children in the prior reporting period.

**CHART 20
NUMBER OF CHILDREN IN OUT-OF-HOME CARE ON THE LAST DAY OF THE REPORTING PERIOD BY REPORTING PERIOD**

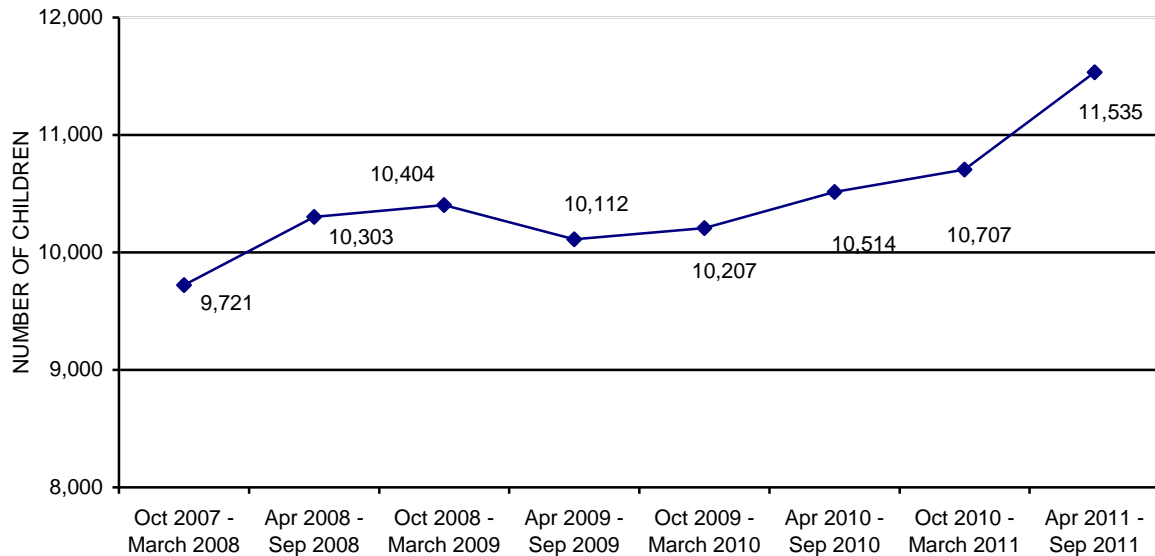


Chart 21 displays a slight increase in the number of young children ages 0-6 placed in group homes. Comparing March 2008 to September 2011, the number of young children in group homes increased by 2 children.

Chart 22 displays the decrease in the number of young children ages 0-3 placed in shelter care. Comparing March 2008 to September 2011, the number of young children in shelters decreased by 4 children. Chart 23 shows that the average length of time in shelter care has increased slightly; comparing March 2008 to September 2011, the average length of stay in shelter increased from 103.4 to 114.7 days, an increase of 11.3 days or 10.9 percent.

CHART 21
THE NUMBER OF CHILDREN IN GROUP HOMES AGES 0 THROUGH 6³

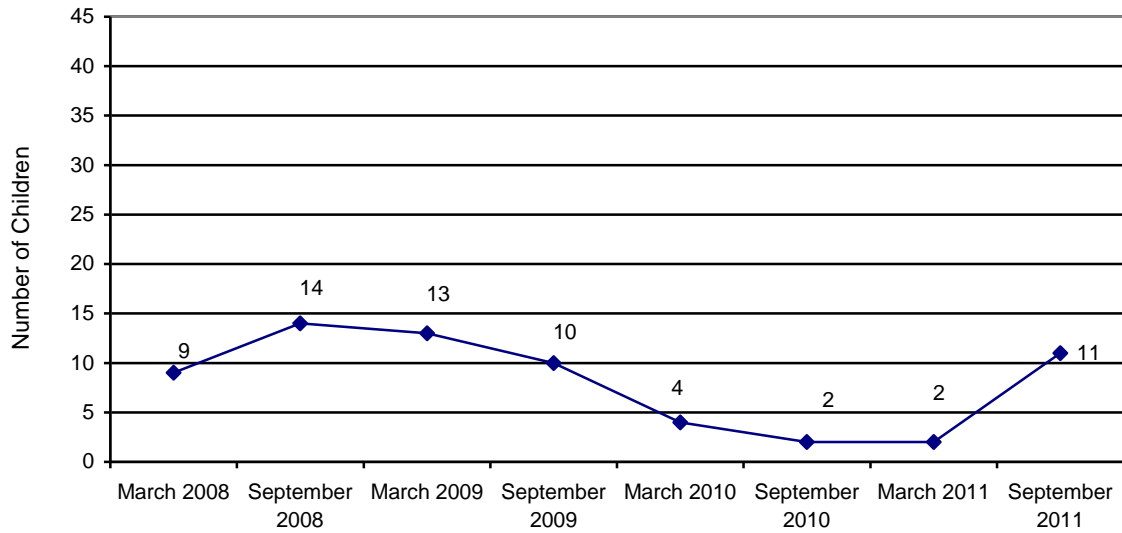
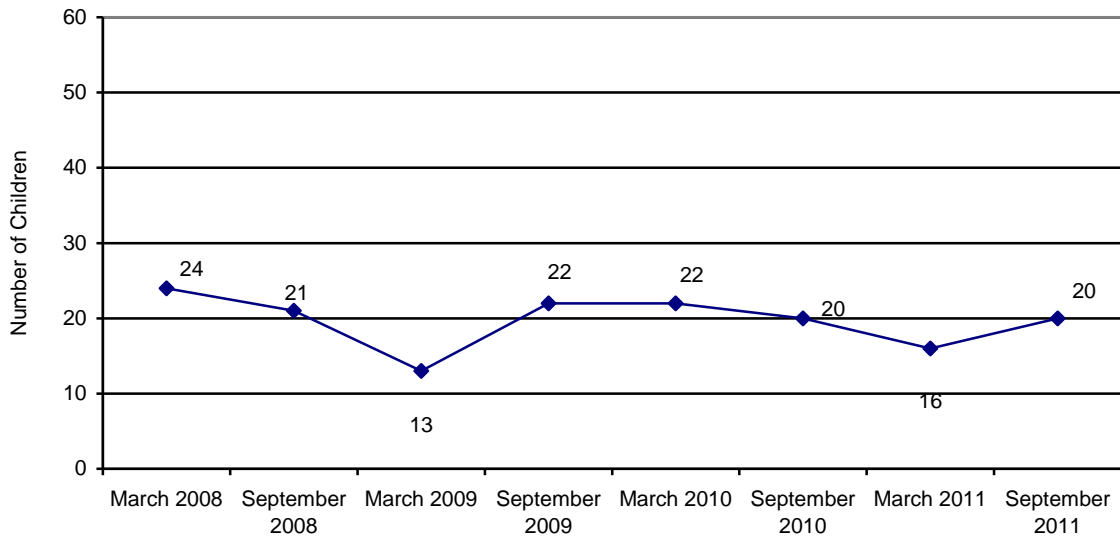
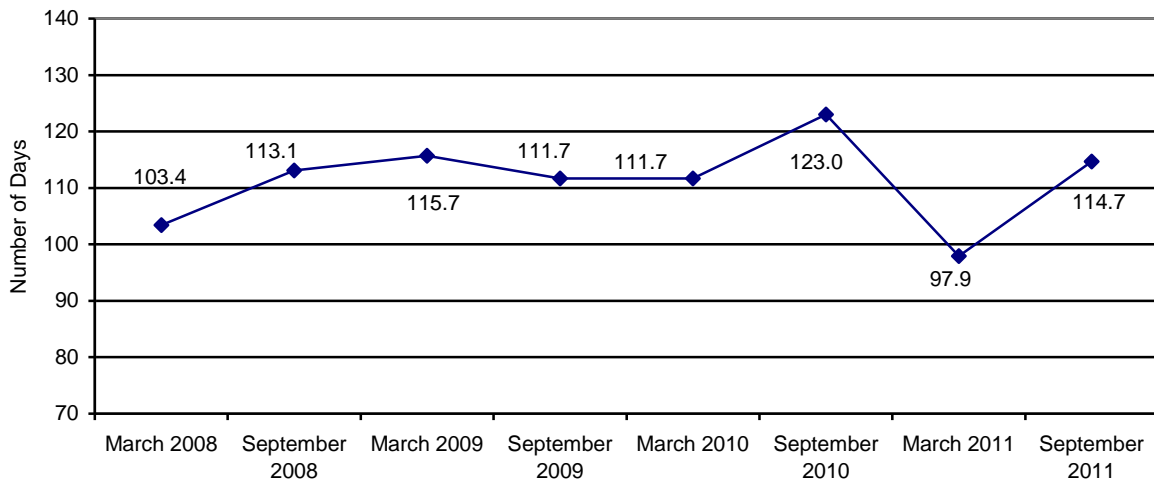


CHART 22
THE NUMBER OF CHILDREN IN SHELTER CARE AGES 0 THROUGH 3



³ Excludes infants placed with their mothers and children placed in foster home group models.

CHART 23
THE AVERAGE LENGTH OF STAY FOR CHILDREN AGES 0 TO 3 IN A SHELTER PLACEMENT ON THE LAST DAY OF THE REPORTING PERIOD



The majority of children in out-of-home care fall within the 1-5 age range (34.3 percent) and the 13-17 age range (25.2 percent). The majority of children in out-of-home care are either Caucasian (39.1 percent) or Hispanic (35.2 percent), followed by African American at 14.8 percent.

CHART 24
THE NUMBER OF CHILDREN IN OUT-OF-HOME CARE BY AGE

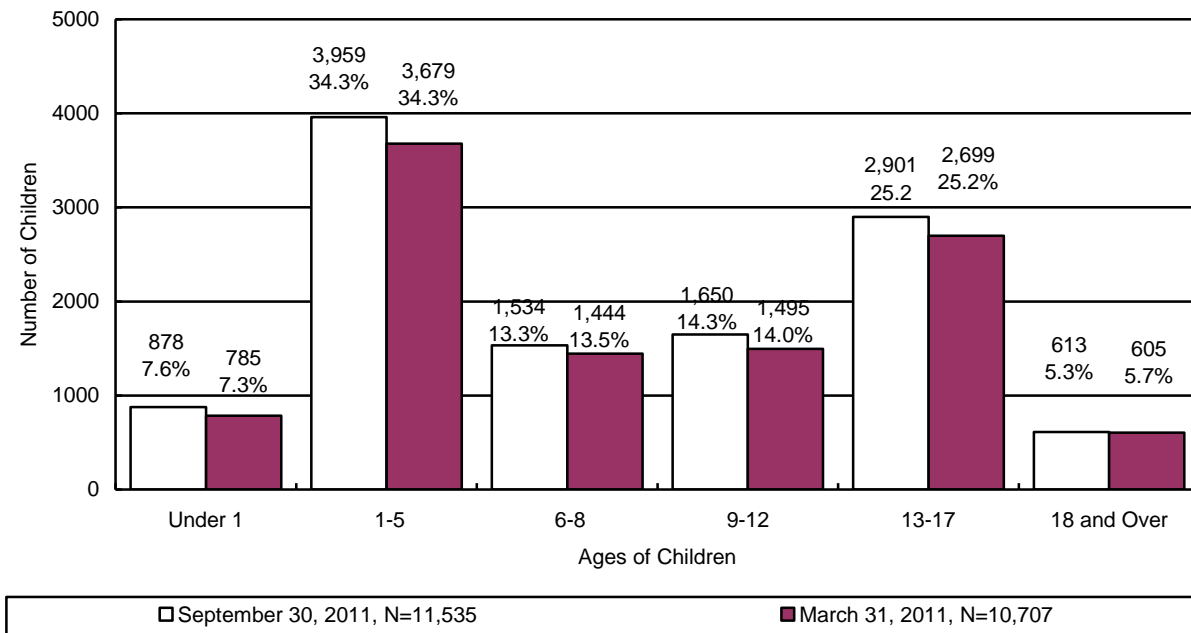
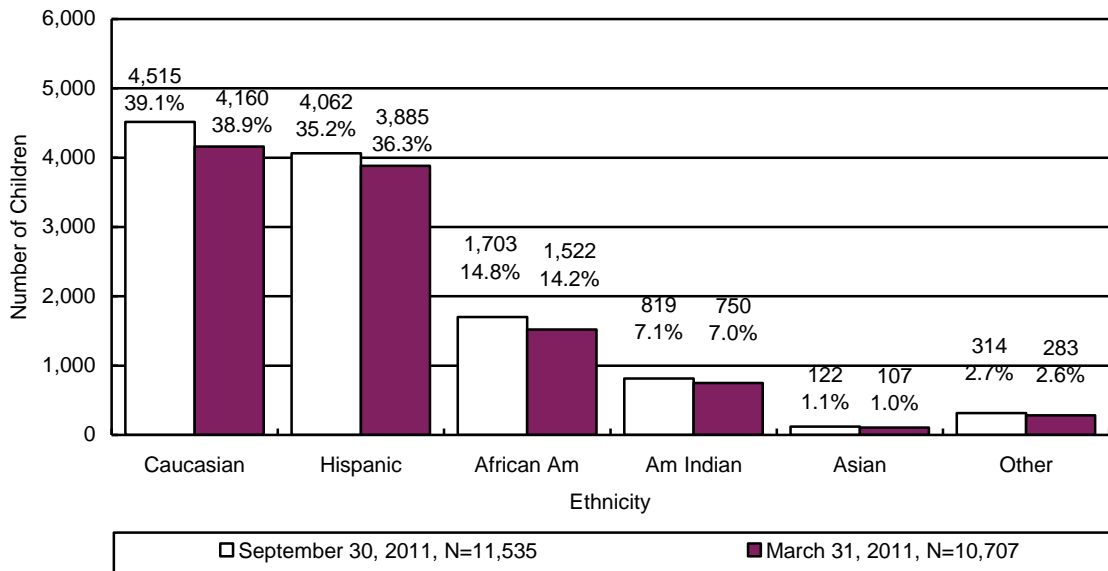


CHART 25
THE NUMBER OF CHILDREN IN OUT-OF-HOME CARE BY ETHNICITY



For 49.8 percent of the children in out-of-home care, family reunification remains the primary case plan goal. This is followed by: adoption, 22.2 percent; independent living, 10.8 percent; long-term foster care, 3.3 percent; live with other relative, 1.3 percent; and, guardianship at 0.4 percent. For the remaining 12.2 percent of the children, the case plan goal is in the process of development.

CHART 26
THE NUMBER OF CHILDREN IN OUT-OF-HOME CARE BY CASE PLAN GOAL

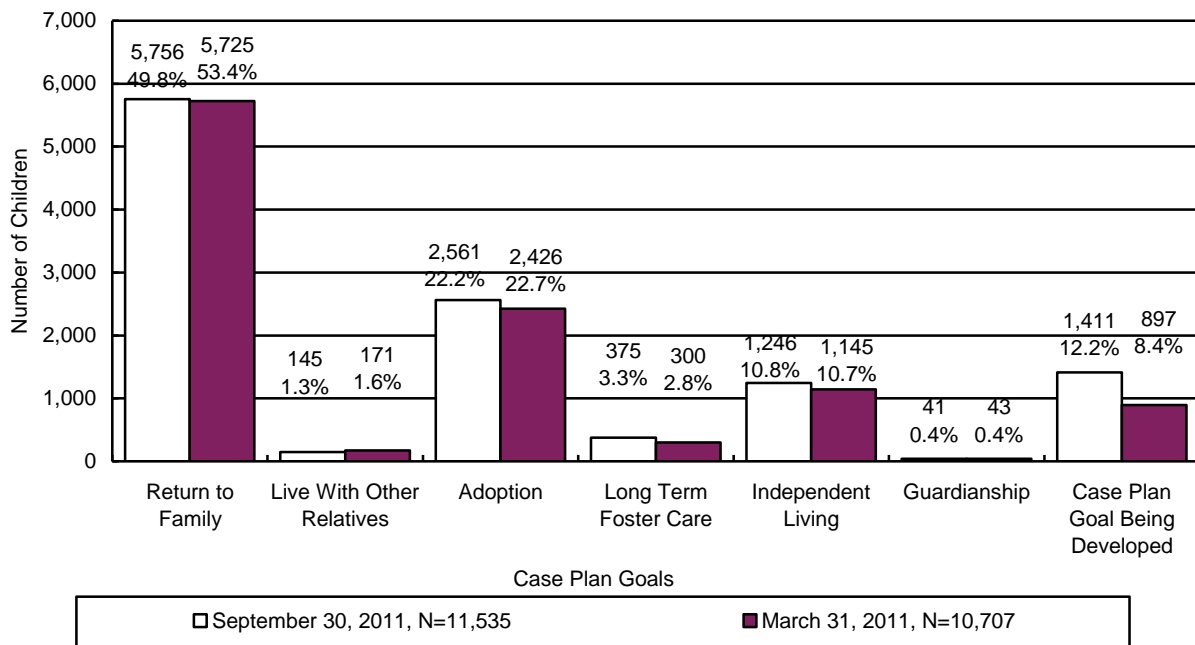
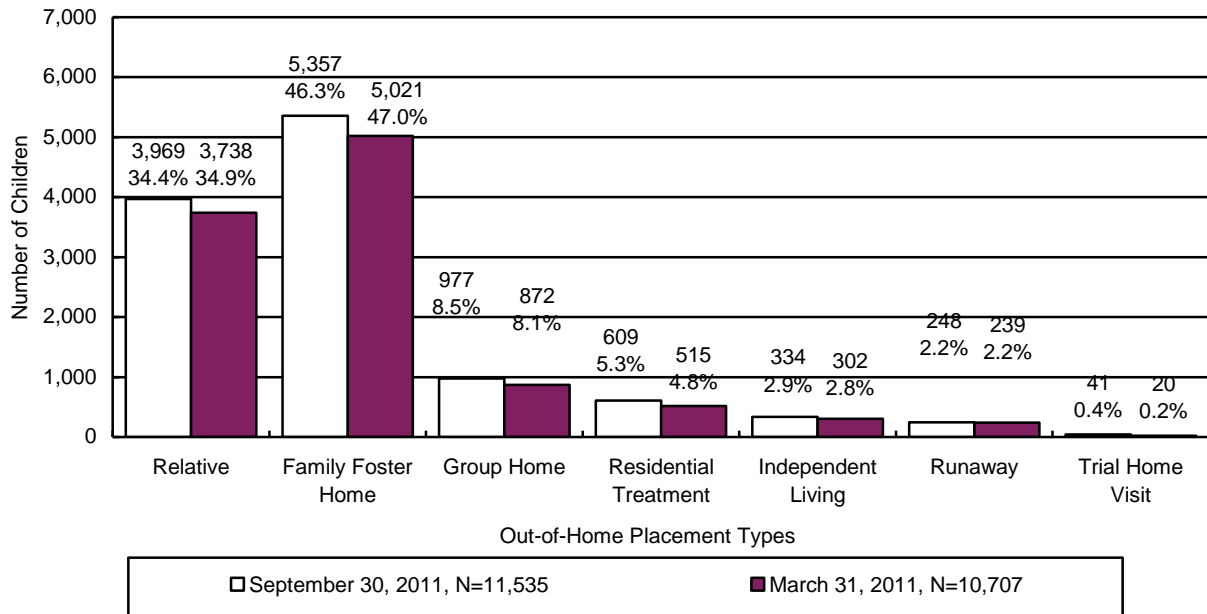


CHART 27
THE NUMBER OF CHILDREN IN OUT-OF-HOME CARE BY PLACEMENT TYPE



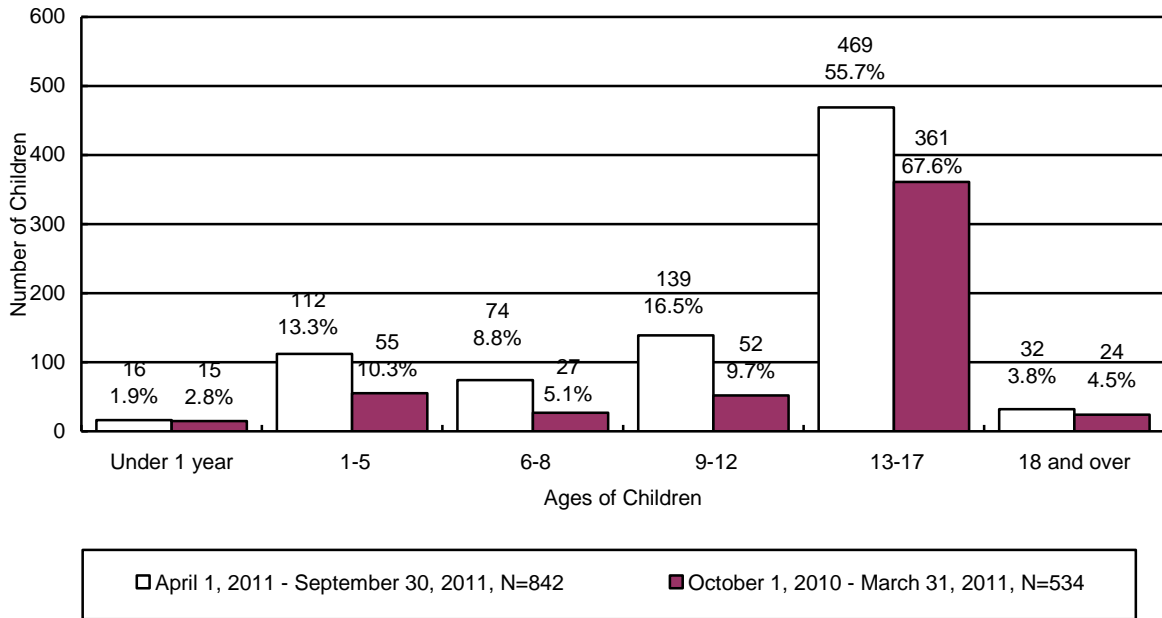
**TABLE 33
THE NUMBER OF CHILDREN IN OUT-OF-HOME CARE BY PLACEMENT TYPE AND AGE**

	RELATIVE	FAMILY FOSTER	GROUP HOME	RESIDENTIAL TREATMENT ⁴	INDEPENDENT LIVING	RUNAWAY	TRIAL HOME VISIT	TOTAL	% OF TOTAL
UNDER 1	322	547	1	6	0	0	2	878	7.6%
1	385	563	2	5	0	0	1	956	8.3%
2	407	437	1	8	0	2	6	861	7.5%
3	347	436	4	9	0	2	2	800	6.9%
4	331	380	6	11	0	2	4	734	6.4%
5	250	338	4	12	0	1	3	608	5.3%
6	266	289	8	7	0	0	2	572	5.0%
7	217	260	8	15	0	0	2	502	4.4%
8	182	253	12	8	0	1	4	460	4.0%
9	187	249	19	16	0	0	2	473	4.1%
10	156	209	18	14	0	0	0	397	3.4%
11	157	185	27	16	0	0	0	385	3.3%
12	141	179	47	25	0	2	1	395	3.4%
13	145	174	59	36	0	2	3	419	3.6%
14	117	206	125	50	0	13	0	511	4.4%
15	124	199	148	77	0	34	1	583	5.1%
16	108	198	206	96	0	51	1	660	5.7%
17	106	171	227	115	6	99	4	728	6.3%
18 AND OLDER	21	84	55	83	328	39	3	613	5.3%
TOTAL	3,969	5,357	977	609	334	248	41	11,535	100.0%
% OF TOTAL	34.4%	46.3%	8.5%	5.3%	2.9%	2.2%	0.4%	100.0%	

⁴ This category includes shelter, detention, and hospital placement types.

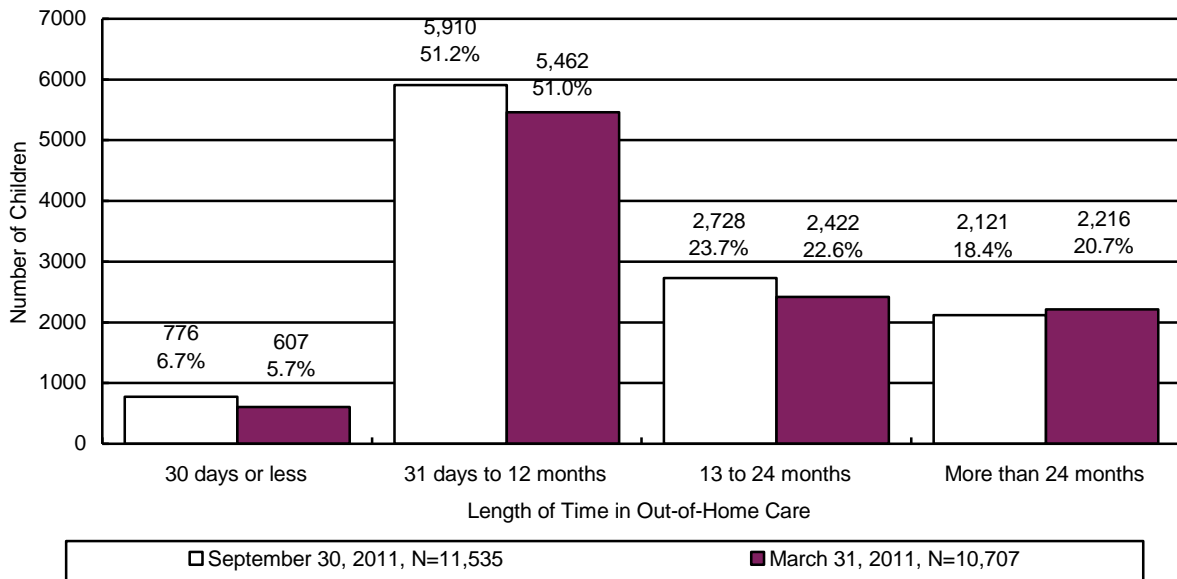
During the reporting period 842 children remained in a shelter or receiving home for more than 21 consecutive days. Chart 28 displays children in shelter more than 21 days for the period of April 1, 2011 through September 30, 2011 and shows that 714 or 84.8 percent of the children were six years of age or older. In addition, 16 or 1.9 percent of the children were under one year old.

CHART 28
NUMBER AND PERCENTAGE OF CHILDREN IN SHELTER OR RECEIVING HOMES FOR MORE THAN 21 CONSECUTIVE DAYS BY AGE OF CHILD⁵



⁵ The chart displays children who spent more than 21 days in shelter during the period. This number differs from the other out-of-home charts as they display children in out-of-home care on the last day of the reporting period.

CHART 29
THE NUMBER OF CHILDREN IN OUT-OF-HOME CARE BY LENGTH OF TIME IN CARE



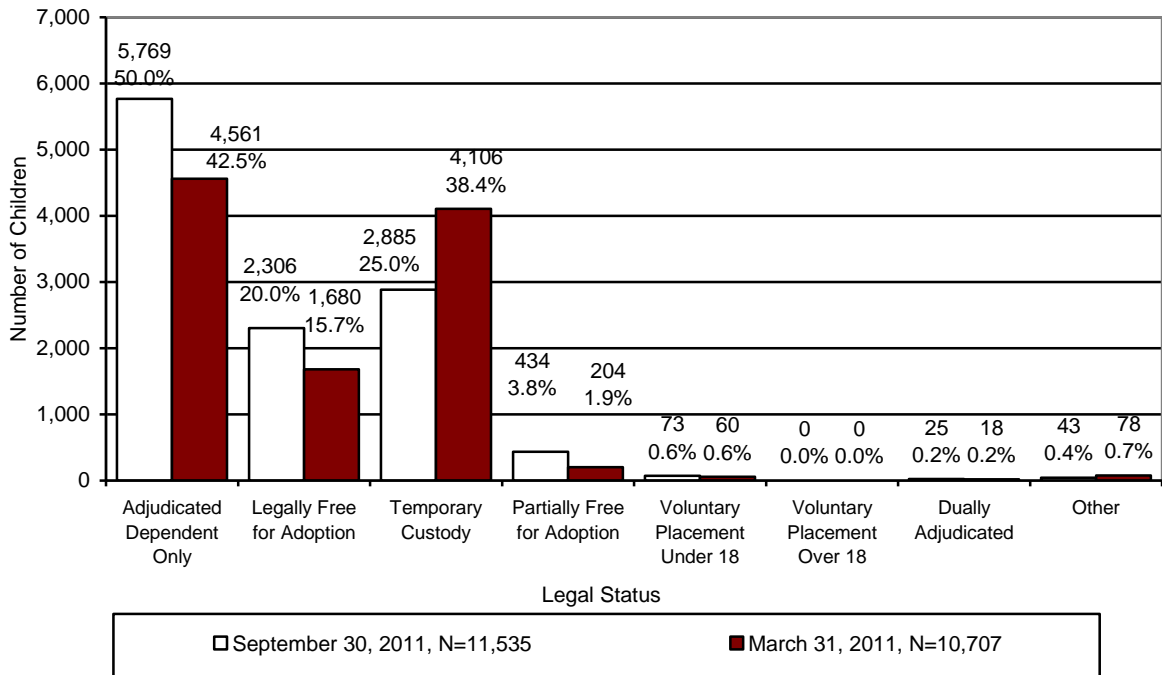
For the children in out-of-home care on September 30, 2011 the average number of placements was 2.5, the median number of placements was 2.0, and the range for the number of placements was 1 to 41 placements during their current removal episode.

TABLE 34
PLACEMENT INFORMATION FOR CHILDREN IN OUT-OF-HOME CARE ON SEPTEMBER 30, 2011

	Placements
Average	2.5
Median	2.0
Range Minimum	1
Range Maximum	41 ⁶

⁶ Some children are so impacted by the severity of the abuse they have suffered that they become unable to form meaningful relationships or to respond to services. These children tend to go through multiple placements with numerous individuals and agencies.

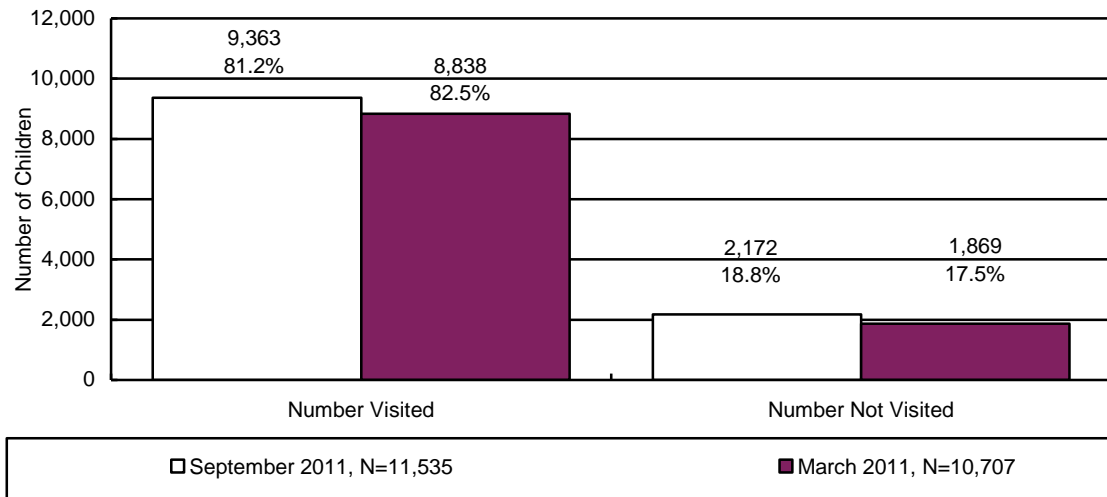
**CHART 30
CHILDREN IN OUT-OF-HOME CARE BY LEGAL STATUS**



At the end of the reporting period there were 11,535 children in out-of-home care who required visitation. Of these children, visitation was accurately documented in the automated system for 9,363 children. As displayed in Chart 31, during this reporting period, the percent of children receiving required visits by their CPS specialists decreased by 1.3 percent to 81.2 percent.

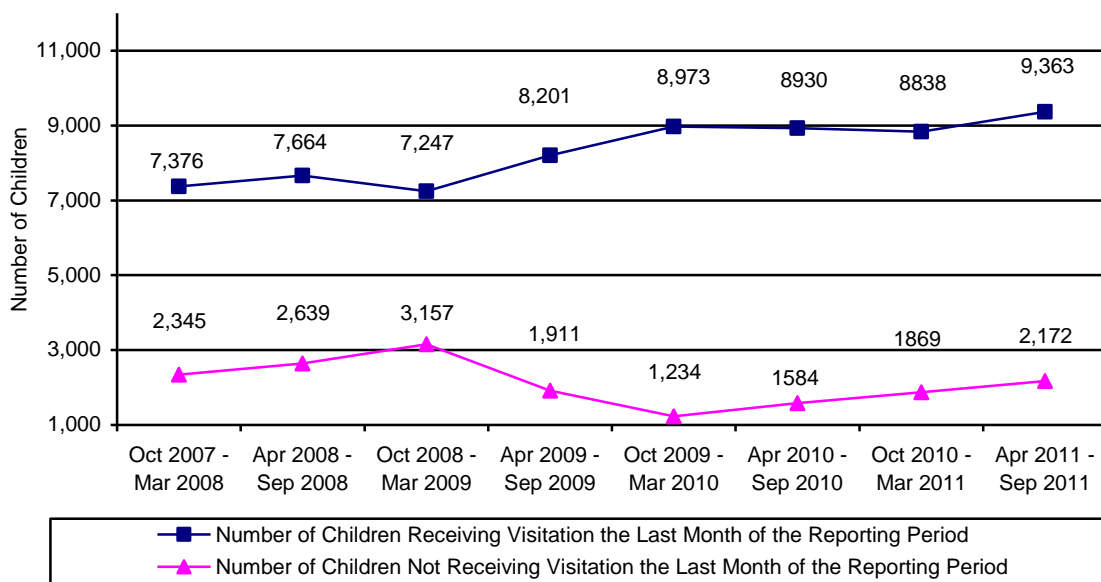
The required child visitation is performed monthly by DES CPS specialists, contracted case managers, and/or other professionals as approved by a supervisor or as established by policy. The Department has verified that more children received the required visitation than is indicated in Chart 31. This information is clearly documented in the automated case notes. However, the Department is unable to compile and tabulate data based solely upon case note text. The Department continues to issue instructions to all direct service staff regarding the system requirements for capturing all visitations. A child was deemed to have received the required visitation if the child received the visitation during the last month of the reporting period.

**CHART 31
THE NUMBER AND PERCENTAGE OF CHILDREN WHO RECEIVED THE REQUIRED VISITATION**



According to Administration for Children, Youth and Families policy, CPS specialists shall have face-to-face contact with all parents at least once a month, including any alleged parents and parents residing outside of the child’s home where the case plan goal is family reunification or remain with family. During the reporting period, there were 1,823 parents who had a child with the case plan goal to return home. Of those parents requiring visitation, 994 or 54.5 percent received the required visitation. The 54.5 percent visitation rate does not reflect attempted visitation where contact with the parent(s) did not take place.

**CHART 32
NUMBER OF CHILDREN RECEIVING AND NOT RECEIVING VISITATION BY REPORTING PERIOD**



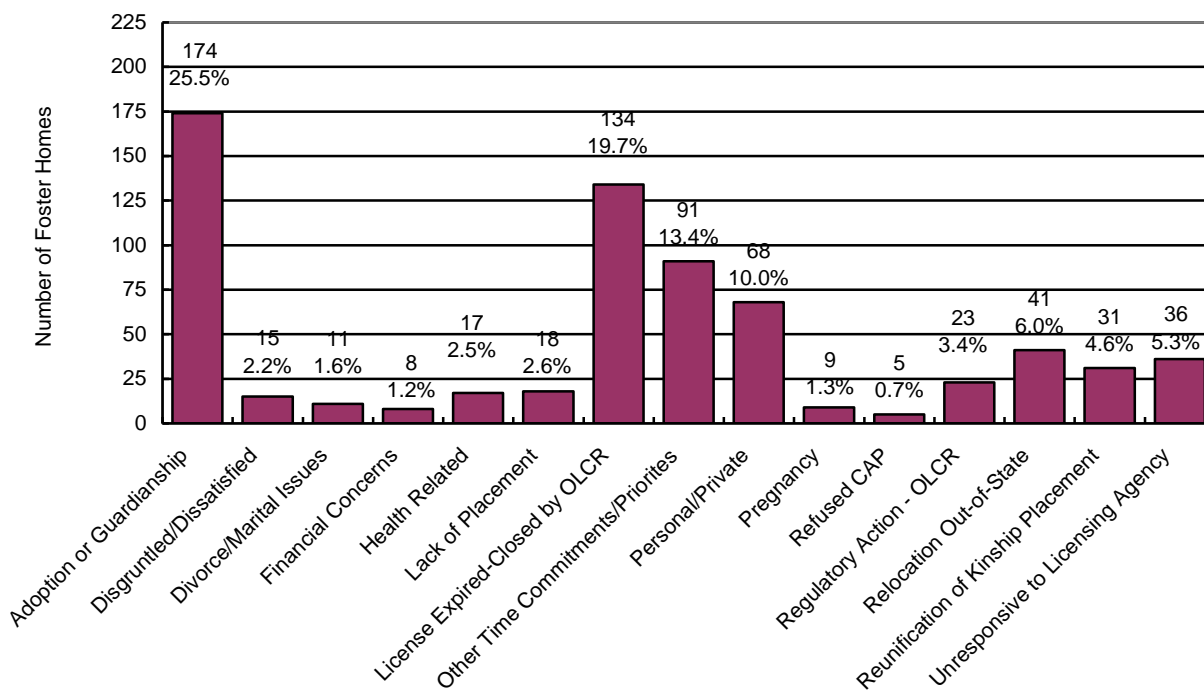
FOSTER HOMES LICENSING, CLOSURES, AND VISITATIONS

As of September 30, 2011, there were 3,496⁷ foster homes licensed for a total capacity of 8,141 spaces. Of these, 1,877 are reported by contractors to be unavailable for placements. An additional 1,874 were unused spaces within these foster homes. Of the unused spaces, a match between the available spaces and children’s needs was not possible.

Licensed foster homes include family foster homes, professional family foster homes, respite foster homes, receiving foster homes, and developmentally disabled homes with DCYF children placed in them. Foster home licenses specify the age range, gender and maximum number of children that can be placed in a home. Foster parents, in consultation with the licensing worker, decide the type of physical, behavioral, and psychological needs of children they can effectively parent based upon their own skill level, experiences, and desires.

During the reporting period, 582 new homes were licensed to provide foster care and 681 homes left the system. This compares to 524 new homes being licensed and 676 homes leaving the system for the period covering October 2010 through March 2011. The chart below gives the reasons for foster home closures for the period of April 1, 2011 through September 30, 2011.

**CHART 33
REASON FOR FOSTER HOME CLOSURE FOR THE PERIOD OF
APRIL 1, 2011 THROUGH SEPTEMBER 30, 2011**

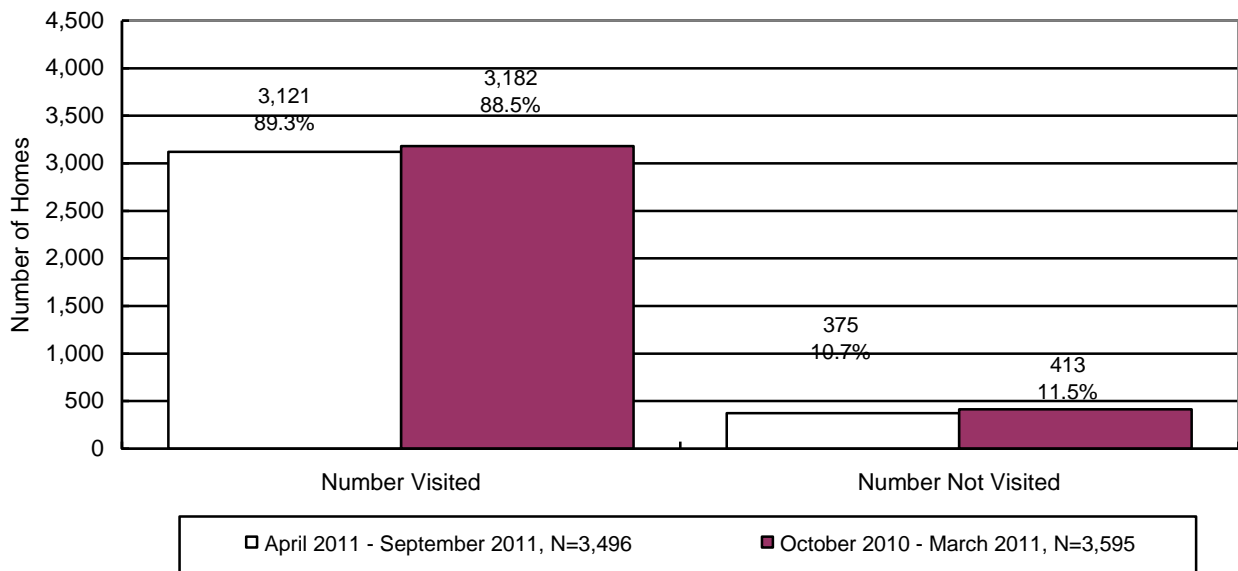


N=681

⁷ The number of homes cited in this report differs from the official number cited by the Office of Licensing, Certification & Regulation (OLCR) due to the fact that the Division for Children, Youth & Families utilizes foster homes that are licensed for developmental disabilities, licensed by the tribes, etc.

During the reporting period, there were 3,496 foster homes that required visitation. Of the 3,496 foster homes requiring visitation, 3,121 or 89.3 percent foster homes received their required visitation. This compares to 3,182 or 88.5 percent of the foster homes that received the required visitation for the period October 2010 through March 2011. The Department believes that more foster homes received the required visitation than is indicated in the chart below. The underreporting of foster home visitation is attributable to the lack of automation being used in reporting the foster home visitation process. The Department recognizes this as a problem and is working to correct this issue.

CHART 34
THE NUMBER AND PERCENTAGE OF FOSTER HOMES WHO RECEIVED THE
REQUIRED VISITATION*



*Required visitations to foster homes, for license monitoring purposes, are performed by licensing case managers.

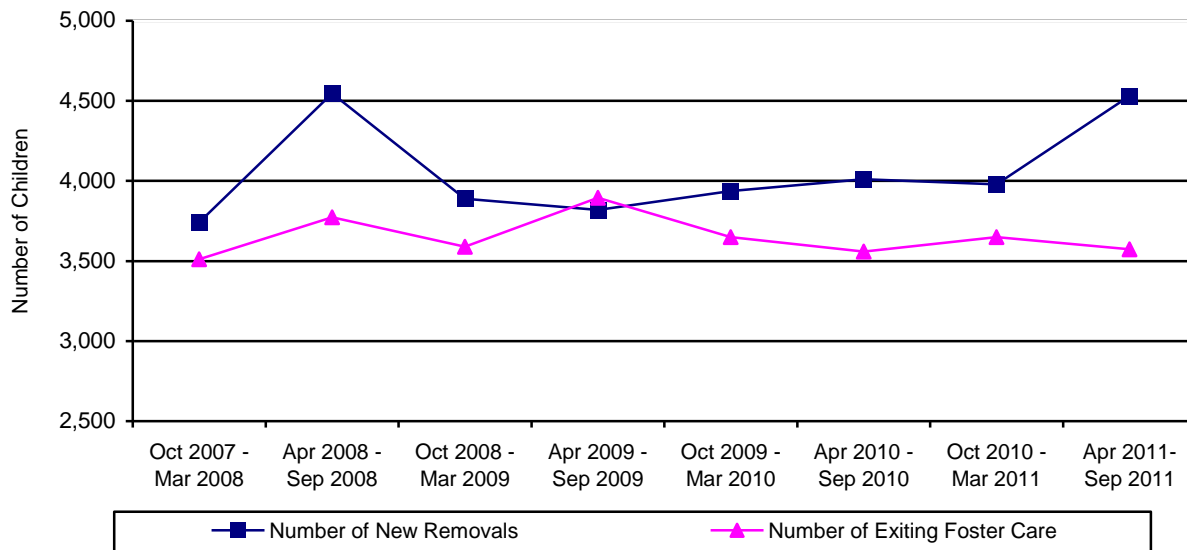
CHILDREN LEAVING OUT-OF HOME CARE

During the reporting period, 3,574 children left the custody of the Department. This compares to 3,649 children exiting care during the prior reporting period. The comparison between the two reporting periods shows that 2.1 percent fewer children left care this reporting period for a decrease of 75 children exiting care.

**TABLE 35
CHILDREN LEAVING OUT-OF-HOME CARE BY PERIOD**

REPORTING PERIOD	NUMBER OF CHILDREN DISCHARGED	% CHANGE OVER PRIOR PERIOD
OCTOBER 2007 – MARCH 2008	3,512	-8.2%
APRIL 2008 – SEPTEMBER 2008	3,773	+7.4%
OCTOBER 2008 – MARCH 2009	3,590	-4.9%
APRIL 2009 – SEPTEMBER 2009	3,894	+8.5%
OCTOBER 2009 – MARCH 2010	3,650	-6.3%
APRIL 2010 – SEPTEMBER 2010	3,559	-2.5%
OCTOBER 2010 – MARCH 2011	3,649	+2.5%
APRIL 2011 – SEPTEMBER 2011	3,574	-2.1%

**CHART 35
CHILDREN ENTERING AND LEAVING OUT-OF-HOME CARE BY REPORTING PERIOD**



The following nine tables depict the children who exited out-of-home care by the reason for leaving care. The tables display the following information: reasons the child left custody, their age, their ethnicity, the number of placements each child had, and the length of time in out-of-home care.

**TABLE 36
TOTAL NUMBER OF CHILDREN LEAVING DES CUSTODY FOR THE END OF THE
REPORTING PERIOD ENDING ON SEPTEMBER 30, 2011**

By Age	Number	Percentage
Under 1	191	5.3%
Ages 1 to 5	1364	38.2%
Ages 6 to 8	523	14.6%
Ages 9 to 12	489	13.7%
Ages 13 to 17	678	19.0%
18 and Over	329	9.2%
Total	3,574	100.0%
Ethnicity	Number	Percentage
Caucasian	1,311	36.7%
Hispanic	1,379	38.6%
African American	450	12.6%
American Indian	290	8.1%
Asian	35	1.0%
Other	109	3.0%
Total	3,574	100.0%
By Number of Placements	Number	Percentage
One	1,800	50.3%
Two	882	24.7%
Three	395	11.1%
Four	178	5.0%
Five	89	2.5%
More than Five	230	6.4%
Total	3,574	100.0%
By Length of Time in Care	Number	Percentage
Less than 30 Days	584	16.3%
31 Days to 12 Months	1,171	32.8%
13 to 24 Months	932	26.1%
More than 24 Months	887	24.8%
Total	3,574	100.0%

	Average	Median
By Age	8.6	7.2
By Number of Placements	2.3	1.0
By Months of Time in Care	17.2	13.2

TABLE 37
NUMBER AND PERCENTAGE OF CHILDREN LEAVING DES CUSTODY
FOR REASON OF "REUNIFICATION WITH PARENTS OR PRIMARY CARETAKER" FOR
THE REPORTING PERIOD ENDING SEPTEMBER 30, 2011

By Age	Number	Percentage
Under 1	157	8.8%
Ages 1 to 5	652	36.6%
Ages 6 to 8	282	15.8%
Ages 9 to 12	268	15.0%
Ages 13 to 17	421	23.6%
18 and Over	3	0.2%
Total	1,783	100.0%
Ethnicity	Number	Percentage
Caucasian	684	38.3%
Hispanic	654	36.7%
African American	214	12.0%
American Indian	132	7.4%
Asian	17	1.0%
Other	82	4.6%
Total	1,783	100.0%
By Number of Placements	Number	Percentage
One	1,114	62.5%
Two	430	24.1%
Three	130	7.3%
Four	61	3.4%
Five	13	0.7%
More than Five	35	2.0%
Total	1,783	100.0%
By Length of Time in Care	Number	Percentage
Less than 30 Days	484	27.1%
31 Days to 12 Months	890	50.0%
13 to 24 Months	344	19.3%
More than 24 Months	65	3.6%
Total	1,783	100.0%

	Average	Median
By Age	7.8	6.8
By Number of Placements	1.7	1.0
By Months of Time in Care	8.0	6.4

TABLE 38
NUMBER AND PERCENTAGE OF CHILDREN LEAVING DES CUSTODY
FOR REASON OF “LIVING WITH OTHER RELATIVES” FOR THE REPORTING PERIOD
ENDING SEPTEMBER 30, 2011

By Age	Number	Percentage
Under 1	5	16.7%
Ages 1 to 5	11	36.7%
Ages 6 to 8	3	10.0%
Ages 9 to 12	4	13.3%
Ages 13 to 17	7	23.3%
18 and Over	0	0.0%
Total	30	100.0%
Ethnicity	Number	Percentage
Caucasian	8	26.7%
Hispanic	10	33.3%
African American	6	20.0%
American Indian	5	16.7%
Asian	0	0.0%
Other	1	3.3%
Total	30	100.0%
By Number of Placements	Number	Percentage
One	28	93.3%
Two	2	6.7%
Three	0	0.0%
Four	0	0.0%
Five	0	0.0%
More than Five	0	0.0%
Total	30	100.0%
By Length of Time in Care	Number	Percentage
Less than 30 Days	27	90.0%
31 Days to 12 Months	2	6.7%
13 to 24 Months	0	0.0%
More than 24 Months	1	3.3%
Total	30	100.0%

	Average	Median
By Age	7.2	5.2
By Number of Placements	1.1	2.0
By Months of Time in Care	1.1	0.1

**TABLE 39
NUMBER AND PERCENTAGE OF CHILDREN LEAVING DES
CUSTODY FOR REASON OF "ADOPTION" FOR THE REPORTING PERIOD
ENDING SEPTEMBER 30, 2011**

By Age	Number	Percentage
Under 1	16	1.5%
Ages 1 to 5	625	58.0%
Ages 6 to 8	191	17.7%
Ages 9 to 12	153	14.2%
Ages 13 to 17	93	8.6%
18 and Over	0	0.0%
Total	1,078	100.0%
Ethnicity	Number	Percentage
Caucasian	387	35.9%
Hispanic	482	44.7%
African American	128	11.9%
American Indian	59	5.5%
Asian	13	1.2%
Other	9	0.8%
Total	1,078	100.0%
By Number of Placements	Number	Percentage
One	431	40.0%
Two	327	30.3%
Three	186	17.3%
Four	72	6.7%
Five	26	2.4%
More than Five	36	3.3%
Total	1,078	100.0%
By Length of Time in Care	Number	Percentage
Less than 30 Days	0	0.0%
31 Days to 12 Months	57	5.3%
13 to 24 Months	456	42.3%
More than 24 Months	565	52.4%
Total	1,078	100.0%

	Average	Median
By Age	6.0	4.9
By Number of Placements	2.2	2.0
By Months of Time in Care	26.7	24.5

**TABLE 40
NUMBER AND PERCENTAGE OF CHILDREN LEAVING DES CUSTODY
FOR REASON OF "GUARDIANSHIP" FOR THE REPORTING PERIOD
ENDING SEPTEMBER 30, 2011**

By Age	Number	Percentage
Under 1	5	2.1%
Ages 1 to 5	50	21.0%
Ages 6 to 8	32	13.4%
Ages 9 to 12	55	23.1%
Ages 13 to 17	95	40.0%
18 and Over	1	0.4%
Total	238	100.0%
Ethnicity	Number	Percentage
Caucasian	69	29.0%
Hispanic	95	39.9%
African American	34	14.3%
American Indian	32	13.4%
Asian	0	0.0%
Other	8	3.4%
Total	238	100.0%
By Number of Placements	Number	Percentage
One	123	51.7%
Two	64	26.9%
Three	25	10.5%
Four	8	3.4%
Five	7	2.9%
More than Five	11	4.6%
Total	238	100.0%
By Length of Time in Care	Number	Percentage
Less than 30 Days	19	8.0%
31 Days to 12 Months	108	45.4%
13 to 24 Months	74	31.1%
More than 24 Months	37	15.5%
Total	238	100.0%

	Average	Median
By Age	10.7	11.9
By Number of Placements	2.2	1.0
By Months of Time in Care	15.5	12.8

**TABLE 41
NUMBER AND PERCENTAGE OF CHILDREN LEAVING DES CUSTODY
FOR REASONS OF "REACHING AGE OF MAJORITY" FOR THE REPORTING PERIOD
ENDING SEPTEMBER 30, 2011**

By Age	Number	Percentage
Under 1	0	0.0%
Ages 1 to 5	0	0.0%
Ages 6 to 8	0	0.0%
Ages 9 to 12	0	0.0%
Ages 13 to 17	5	1.6%
18 and Over	316	98.4%
Total	321	100.0%
Ethnicity	Number	Percentage
Caucasian	145	45.2%
Hispanic	102	31.8%
African American	43	13.4%
American Indian	28	8.7%
Asian	2	0.6%
Other	1	0.3%
Total	321	100.0%
By Number of Placements	Number	Percentage
One	33	10.3%
Two	39	12.1%
Three	43	13.4%
Four	32	10.0%
Five	36	11.2%
More than Five	138	43.0%
Total	321	100.0%
By Length of Time in Care	Number	Percentage
Less than 30 Days	4	1.2%
31 Days to 12 Months	75	23.4%
13 to 24 Months	39	12.1%
More than 24 Months	203	63.3%
Total	321	100.0%

	Average	Median
By Age	18.9	18.2
By Number of Placements	6.5	5.0
By Months of Time in Care	41.6	34.4

TABLE 42
NUMBER AND PERCENTAGE OF CHILDREN LEAVING DES CUSTODY
FOR REASON OF “TRANSFER TO ANOTHER AGENCY” FOR THE REPORTING PERIOD
ENDING SEPTEMBER 30, 2011

By Age	Number	Percentage
Under 1	7	10.8%
Ages 1 to 5	20	30.8%
Ages 6 to 8	14	21.5%
Ages 9 to 12	9	13.8%
Ages 13 to 17	15	23.1%
18 and Over	0	0.0%
Total	65	100.0%
Ethnicity	Number	Percentage
Caucasian	1	1.5%
Hispanic	15	23.1%
African American	13	20.0%
American Indian	31	47.7%
Asian	2	3.1%
Other	3	4.6%
Total	65	100.0%
By Number of Placements	Number	Percentage
One	37	56.8%
Two	12	18.5%
Three	7	10.8%
Four	3	4.6%
Five	2	3.1%
More than Five	4	6.2%
Total	65	100.0%
By Length of Time in Care	Number	Percentage
Less than 30 Days	25	38.5%
31 Days to 12 Months	25	38.5%
13 to 24 Months	10	15.3%
More than 24 Months	5	7.7%
Total	65	100.0%

	Average	Median
By Age	8.0	7.4
By Number of Placements	2.3	1.0
By Months of Time in Care	8.8	2.4

TABLE 43
NUMBER AND PERCENTAGE OF CHILDREN LEAVING DES CUSTODY
FOR REASON OF “RUNAWAY” FOR THE REPORTING PERIOD
ENDING SEPTEMBER 30, 2011

By Age	Number	Percentage
Under 1	0	0.0%
Ages 1 to 5	1	2.0%
Ages 6 to 8	0	0.0%
Ages 9 to 12	0	0.0%
Ages 13 to 17	42	82.3%
18 and Over	8	15.7%
Total	51	100.0%
Ethnicity	Number	Percentage
Caucasian	13	25.5%
Hispanic	19	37.2%
African American	11	21.6%
American Indian	3	5.9%
Asian	1	2.0%
Other	4	7.8%
Total	51	100.0%
By Number of Placements	Number	Percentage
One	29	56.9%
Two	6	11.8%
Three	4	7.8%
Four	2	3.9%
Five	4	7.8%
More than Five	6	11.8%
Total	51	100.0%
By Length of Time in Care	Number	Percentage
Less than 30 Days	24	47.1%
31 Days to 12 Months	9	17.6%
13 to 24 Months	8	15.7%
More than 24 Months	10	19.6%
Total	51	100.0%

	Average	Median
By Age	16.3	16.7
By Number of Placements	3.1	1.0
By Months of Time in Care	12.4	1.4

**TABLE 44
NUMBER AND PERCENTAGE OF CHILDREN LEAVING DES CUSTODY
FOR REASON OF "DEATH OF CHILD" FOR THE REPORTING PERIOD ENDING
SEPTEMBER 30, 2011**

By Age	Number	Percentage
Under 1	1	12.5%
Ages 1 to 5	5	62.5%
Ages 6 to 8	1	12.5%
Ages 9 to 12	0	0.0%
Ages 13 to 17	0	0.0%
18 and Over	1	12.5%
Total	8	100.0%
Ethnicity	Number	Percentage
Caucasian	4	50.0%
Hispanic	2	25.0%
African American	1	12.5%
American Indian	0	0.0%
Asian	0	0.0%
Other	1	12.5%
Total	8	100.0%
By Number of Placements	Number	Percentage
One	5	62.5%
Two	2	25.0%
Three	0	0.0%
Four	0	0.0%
Five	1	12.5%
More than Five	0	0.0%
Total	8	100.0%
By Length of Time in Care	Number	Percentage
Less than 30 Days	1	12.5%
31 Days to 12 Months	5	62.5%
13 to 24 Months	1	12.5%
More than 24 Months	1	12.5%
Total	8	100.0%

	Average	Median
By Age	4.6	2.5
By Number of Placements	1.8	1.0
By Months of Time in Care	10.3	6.6

**TABLE 45
CHILDREN EXITING CARE FOR REASON OF DEATH BY CAUSE OF DEATH,
PLACEMENT TYPE AT TIME OF DEATH, AND COUNTY**

COUNTY	CAUSE OF DEATH	TYPE OF PLACEMENT AT TIME OF DEATH
Pima	Pending	Independent Living
Maricopa	Natural Causes – Undetermined	Family Foster Home
Maricopa	Medical Condition	Family Foster Home
Maricopa	Medical Condition	Shelter
Pima	Pending	Family Foster Home - Relative
Maricopa	Pending	Family Foster Home
Maricopa	Medical Condition	Family Foster Home
Maricopa	Medical Condition	Family Foster Home

**TABLE 46
NUMBER OF CHILDREN IN AN OPEN CASE WHO DIED AS A RESULT OF ALLEGED
ABUSE AS CATEGORIZED BY THE CUSTODIAL RELATIONSHIP AND COUNTY FOR THE
PERIOD APRIL 1, 2011 THROUGH SEPTEMBER 30, 2011**

COUNTY	BIOLOGICAL PARENT(S)	OTHER FAMILY MEMBER	ADOPTIVE PARENT(S)	FOSTER CARE PARENT(S)	OTHER OUT-OF-HOME CARE PROVIDER	TOTAL	% OF TOTAL
APACHE	0	0	0	0	0	0	0.0%
COCHISE	0	0	0	0	0	0	0.0%
COCONINO	0	0	0	0	0	0	0.0%
GILA	0	0	0	0	0	0	0.0%
GRAHAM	0	0	0	0	0	0	0.0%
GREENLEE	0	0	0	0	0	0	0.0%
LA PAZ	0	0	0	0	0	0	0.0%
MARICOPA	4	1	0	0	0	5	83.3%
MOHAVE	0	0	0	0	0	0	0.0%
NAVAJO	0	0	0	0	0	0	0.0%
PIMA	0	0	0	0	0	0	0.0%
PINAL	0	0	0	0	0	0	0.0%
SANTA CRUZ	0	0	0	0	0	0	0.0%
YAVAPAI	1	0	0	0	0	1	16.7%
YUMA	0	0	0	0	0	0	0.0%
STATEWIDE	5	1	0	0	0	6	100.0%
% OF TOTAL	83.3%	16.7%	0.0%	0.0%	0.0%	100.0%	

CHILDREN WITH ADOPTIVE CASE PLAN GOALS

Of the 11,535 children in out-of-home care on September 30, 2011, 2,561 or 22.2 percent had a case plan goal of adoption. The majority of those children, 46.8 percent, are in the 1-5 year old age range, followed by 19.0 percent in the 9-12 year old age range, and 17.0 percent in the 6-8 year old age range. The remaining children, 435 or 17.0 percent, fall within the under one or 13 and over age range. The majority of these children are Hispanic (985 or 38.5 percent), Caucasian (946 or 36.9 percent), or African American (438 or 17.1 percent). The remaining 192 children or 7.5 percent are American Indian, Asian or other. Seventy eight and eight tenths of a percent, or 1,924 of the children free for adoption, are currently placed in their adoptive homes.

**TABLE 47
NUMBER OF CHILDREN WITH A PETITION FOR TERMINATION OF PARENTAL RIGHTS
BY COUNTY FOR THE PERIOD APRIL 1, 2011 THROUGH SEPTEMBER 30, 2011**

COUNTY	TERMINATION OF RIGHTS GRANTED	TERMINATION OF RIGHTS DENIED	TERMINATION OF RIGHTS GRANTED IN PART/DENIED IN PART	TERMINATION OF RIGHTS WITHDRAWN	TOTAL	% OF TOTAL
APACHE	3	0	0	0	3	0.2%
COCHISE	42	0	0	0	42	3.1%
COCONINO	7	0	0	0	7	0.5%
GILA	12	0	0	0	12	0.9%
GRAHAM	1	0	0	0	1	0.1%
GREENLEE	2	0	0	0	2	0.1%
LA PAZ	4	0	0	0	4	0.3%
MARICOPA	708	1	0	0	709	51.8%
MOHAVE	40	0	0	2	42	3.1%
NAVAJO	12	0	0	0	12	0.9%
PIMA	389	0	0	0	389	28.4%
PINAL	76	0	0	0	76	5.6%
SANTA CRUZ	3	0	0	0	3	0.2%
YAVAPAI	41	1	0	0	42	3.1%
YUMA	23	0	0	0	23	1.7%
STATEWIDE	1,363	2	0	2	1,367	100.0%
% OF TOTAL	99.8%	0.1%	0.0%	0.1%	100.0%	

The average length of time that a child with a case plan goal of “adoption” has spent in out-of-home care is 2 years. There were a total of 2,561 children with case plan goals of adoption during this reporting period. Of this total, 1,942 were placed and 619 were not placed. The population of children with case plan goals of adoption averaged 2.7 placements and had a median placement count of 2.0. Their placement count ranged from 1 to 26.

**TABLE 48
PLACEMENT INFORMATION FOR CHILDREN WITH A CASE PLAN GOAL OF ADOPTION**

	Placements
Average	2.7
Median	2.0
Range Minimum	1
Range Maximum	26

**CHART 36
THE PLACEMENT AND NUMBER OF CHILDREN WITH A CASE PLAN GOAL OF ADOPTION BY AGE**

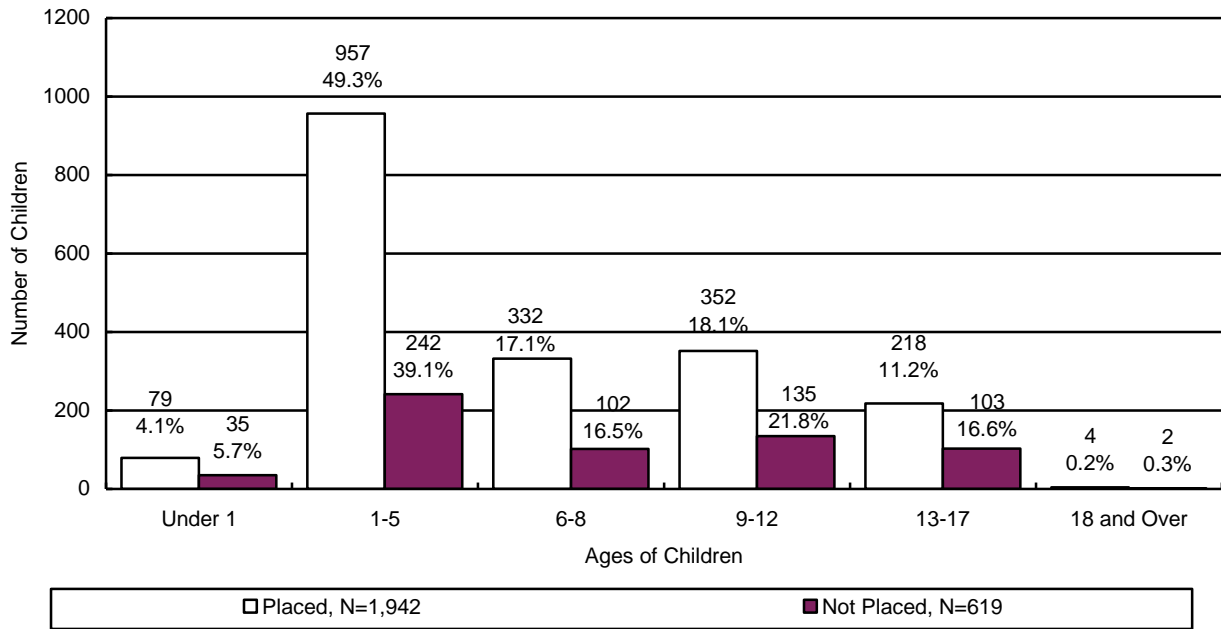


CHART 37
THE PLACEMENT AND NUMBER OF CHILDREN WITH A CASE PLAN GOAL OF ADOPTION BY ETHNICITY

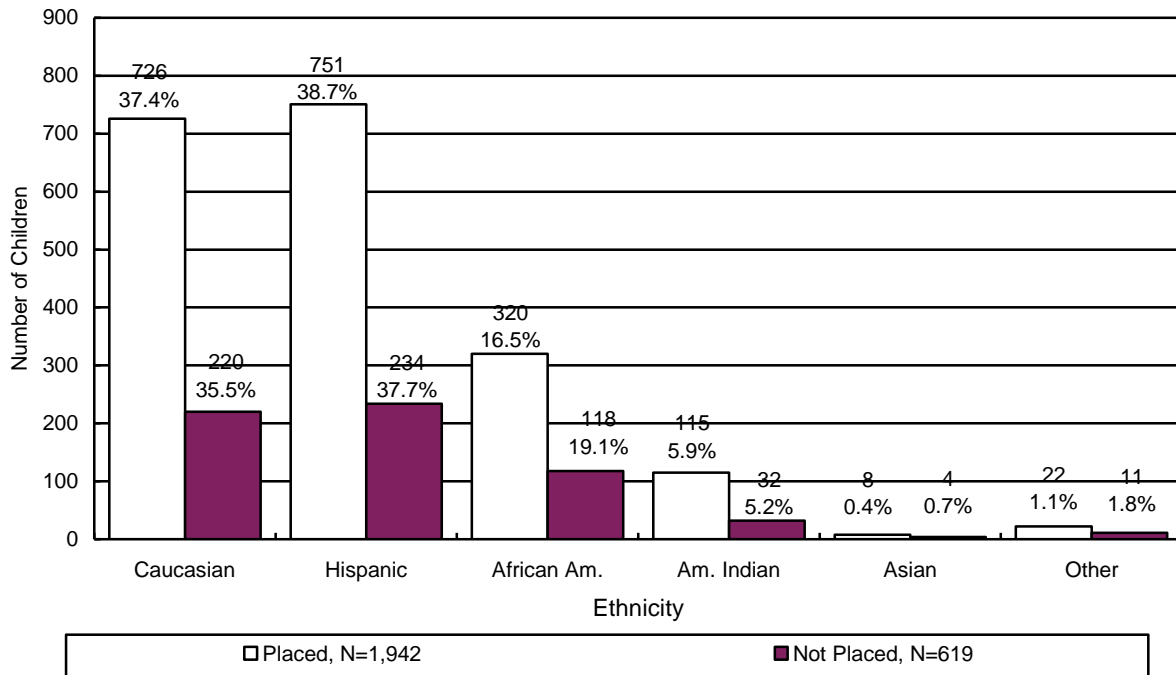
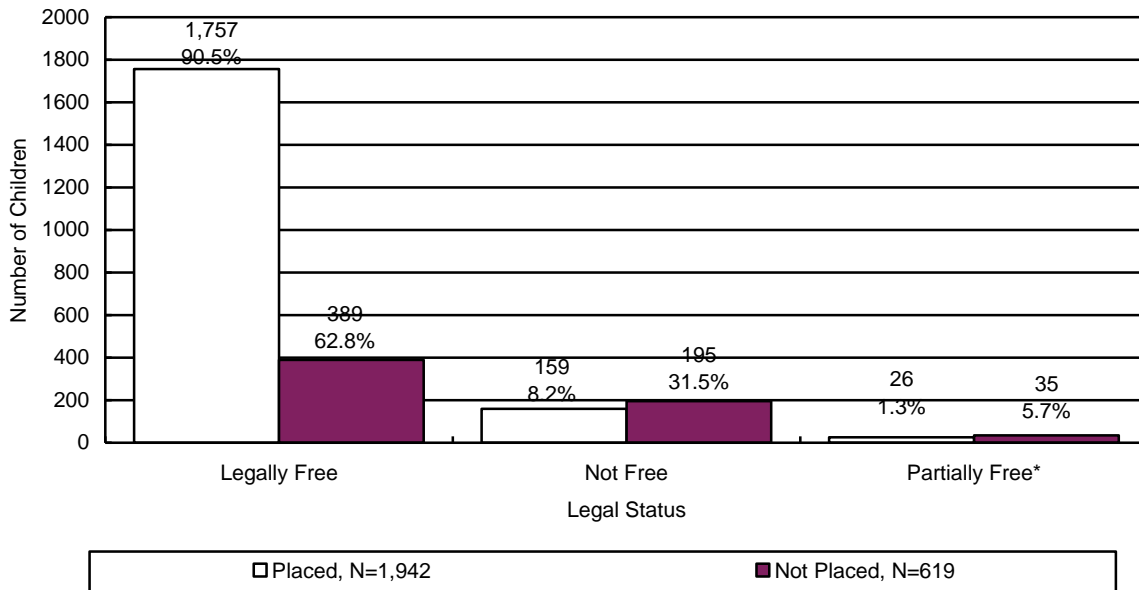
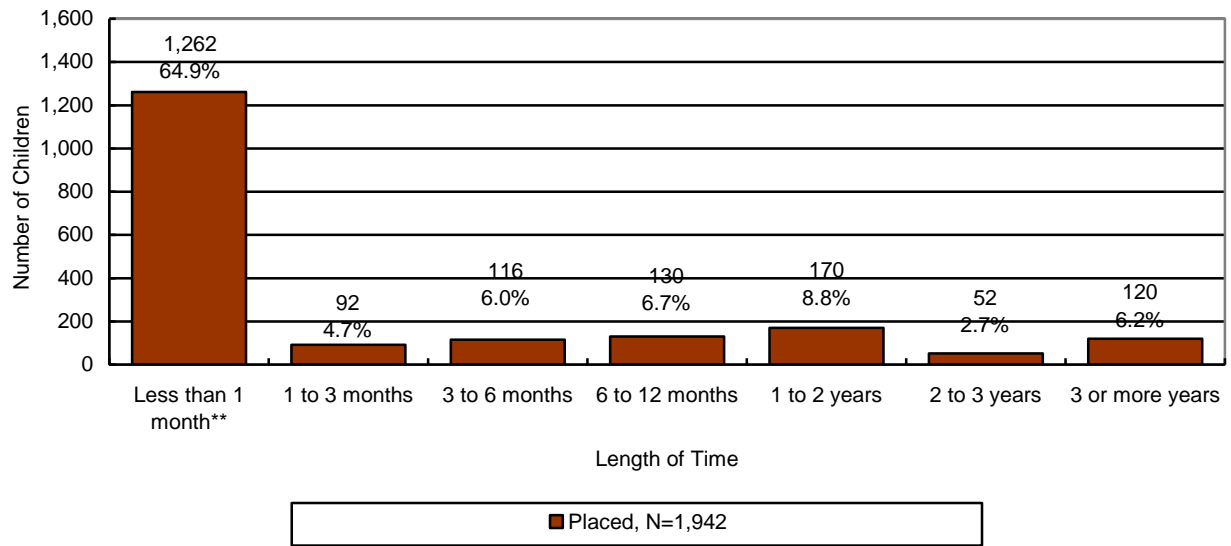


CHART 38
THE PLACEMENT AND NUMBER OF CHILDREN WITH A CASE PLAN GOAL OF ADOPTION BY LEGAL STATUS



*Partially free refers to a situation where only one of the parent's rights has been severed.

CHART 39
THE NUMBER OF CHILDREN WITH A CASE PLAN GOAL OF ADOPTION BY LENGTH OF TIME FROM CHANGE OF CASE PLAN GOAL OF ADOPTION TO ADOPTIVE PLACEMENT



**Approximately 70 percent of children are adopted by relatives or their foster parents and are already in their prospective adoptive placement at the time the case plan goal changes to adoption.

CHART 40
THE NUMBER OF CHILDREN WITH A CASE PLAN GOAL OF ADOPTION WHO WERE IN AN ADOPTIVE PLACEMENT BY THE MARITAL STATUS OF THE ADOPTIVE PARENT

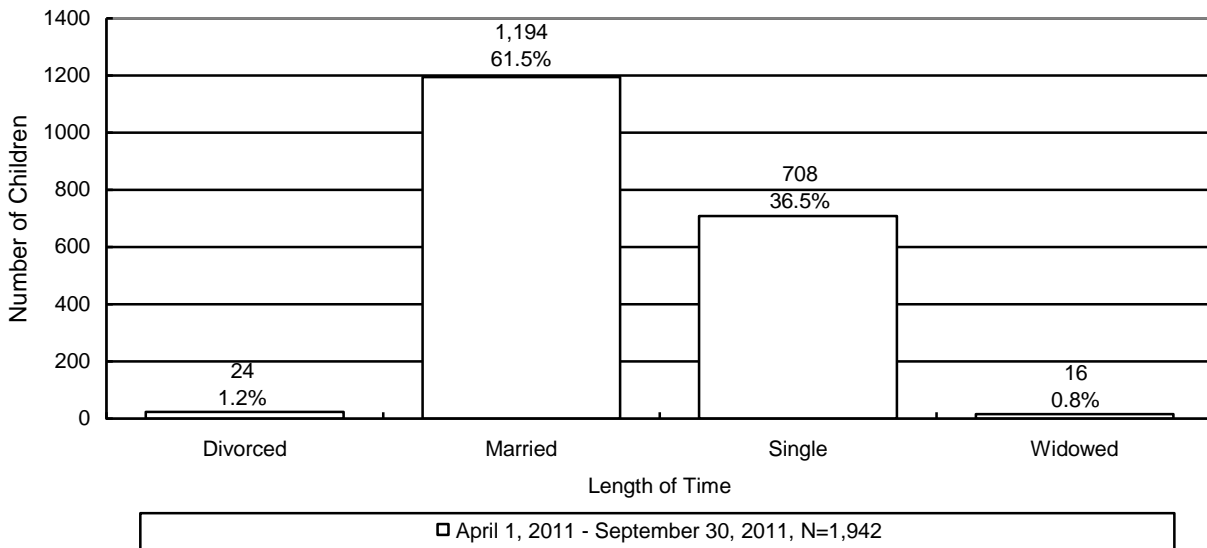
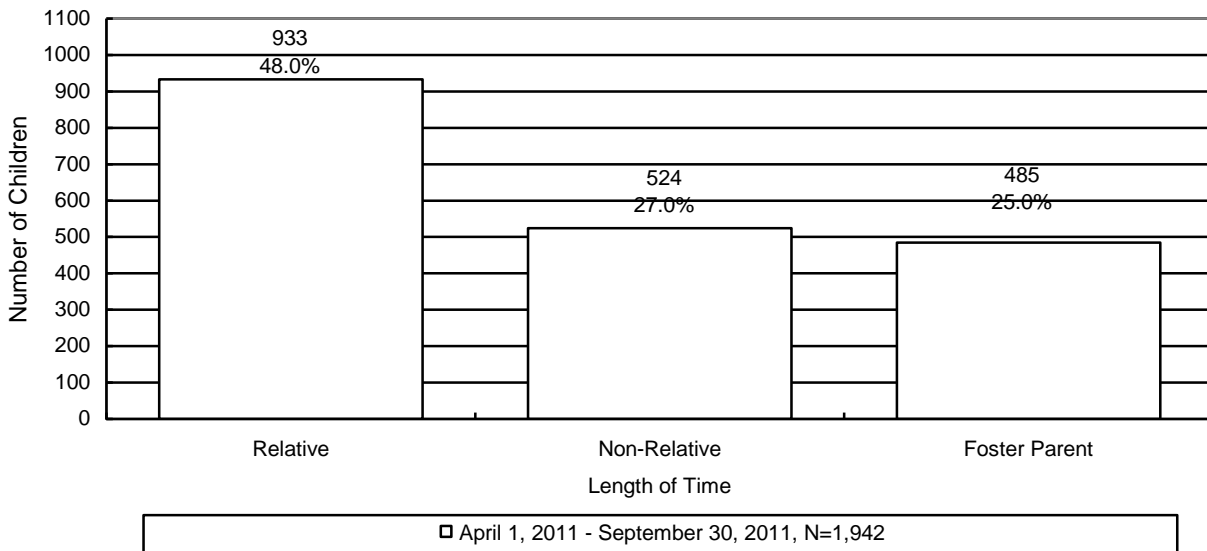


CHART 41
THE NUMBER OF CHILDREN WITH A CASE PLAN GOAL OF ADOPTION WHO WERE IN AN ADOPTIVE PLACEMENT BY THE RELATIONSHIP OF THE ADOPTIVE PARENT



DISRUPTIONS

TABLE 49
THE NUMBER OF CHILDREN WITH A CASE PLAN GOAL OF ADOPTION WHO WERE IN AN ADOPTIVE PLACEMENT AND DISRUPTED BY AGE AND ETHNICITY

By Age	Number	Percentage
Under 1	0	0.0%
Ages 1 – 5	1	25.0%
Ages 6 – 8	1	25.0%
Ages 9 – 12	2	50.0%
Ages 13 – 17	0	0.0%
18 and Over	0	0.0%
Total	4	100.0%
Ethnicity	Number	Percentage
Caucasian	3	75.0%
Hispanic	1	25.0%
African American	0	0.0%
American Indian	0	0.0%
Asian	0	0.0%
Other	0	0.0%
Total	4	100.0%

CHART 42
THE NUMBER OF CHILDREN WITH A CASE PLAN GOAL OF ADOPTION WHO WERE IN AN ADOPTIVE PLACEMENT AND DISRUPTED BY THE MARITAL STATUS OF THE ADOPTIVE PARENT

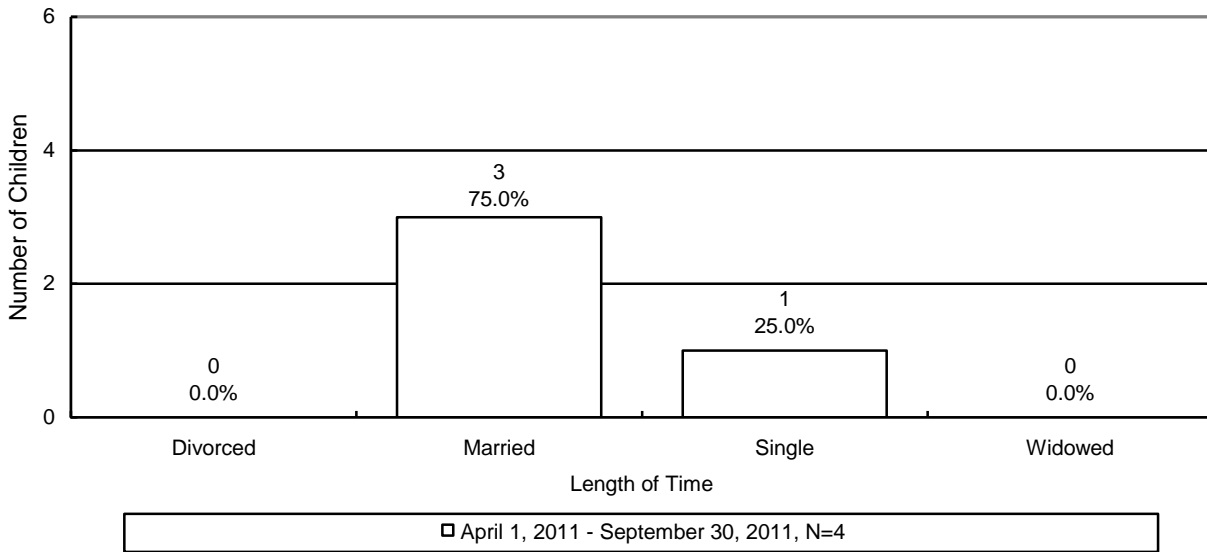
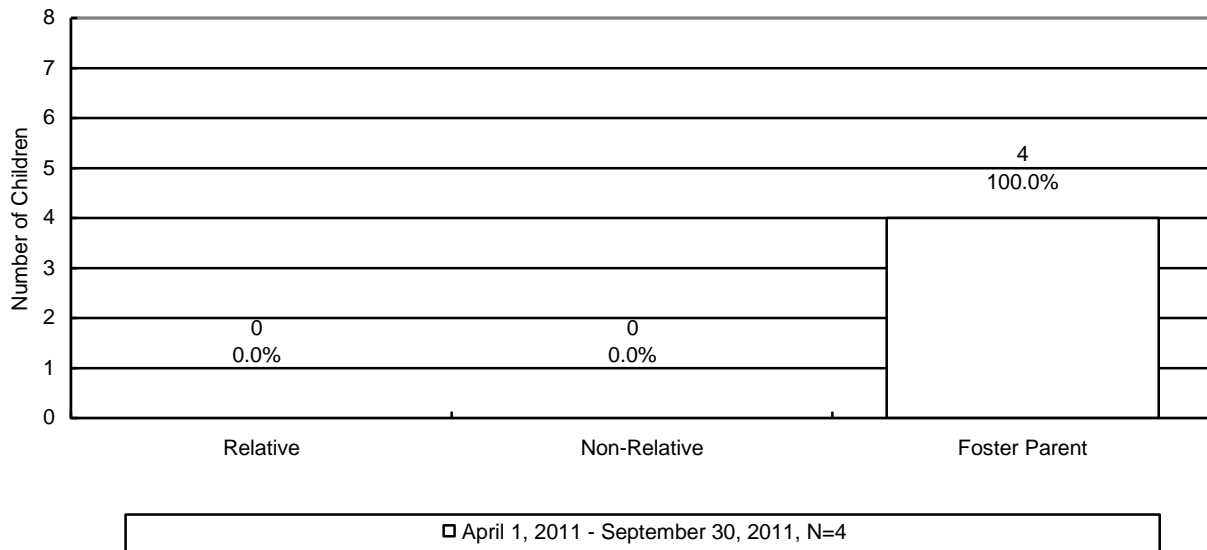
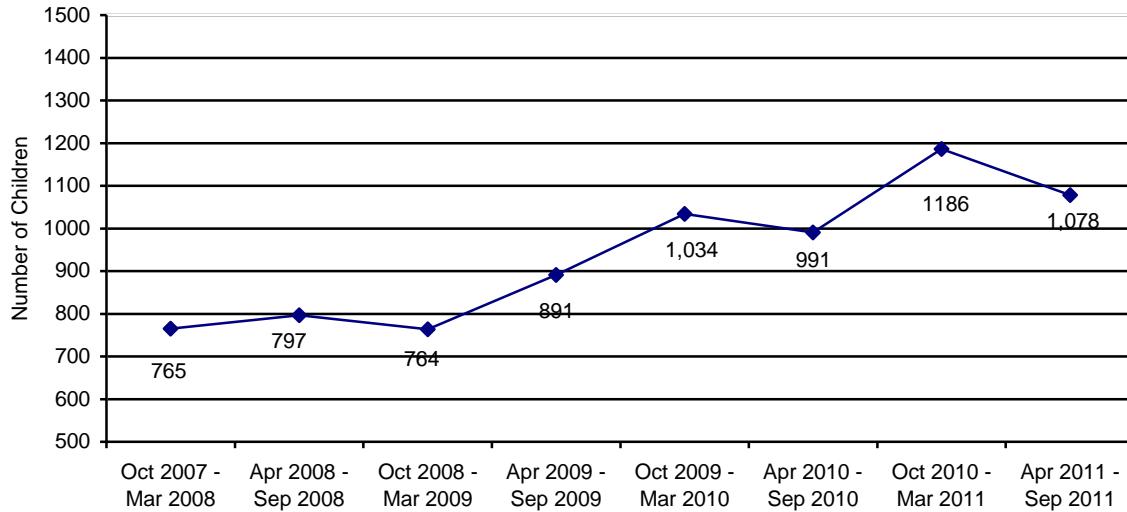


CHART 43
THE NUMBER OF CHILDREN WITH A CASE PLAN GOAL OF ADOPTION WHO WERE IN AN ADOPTIVE PLACEMENT AND DISRUPTED BY THE RELATIONSHIP OF THE ADOPTIVE PARENT



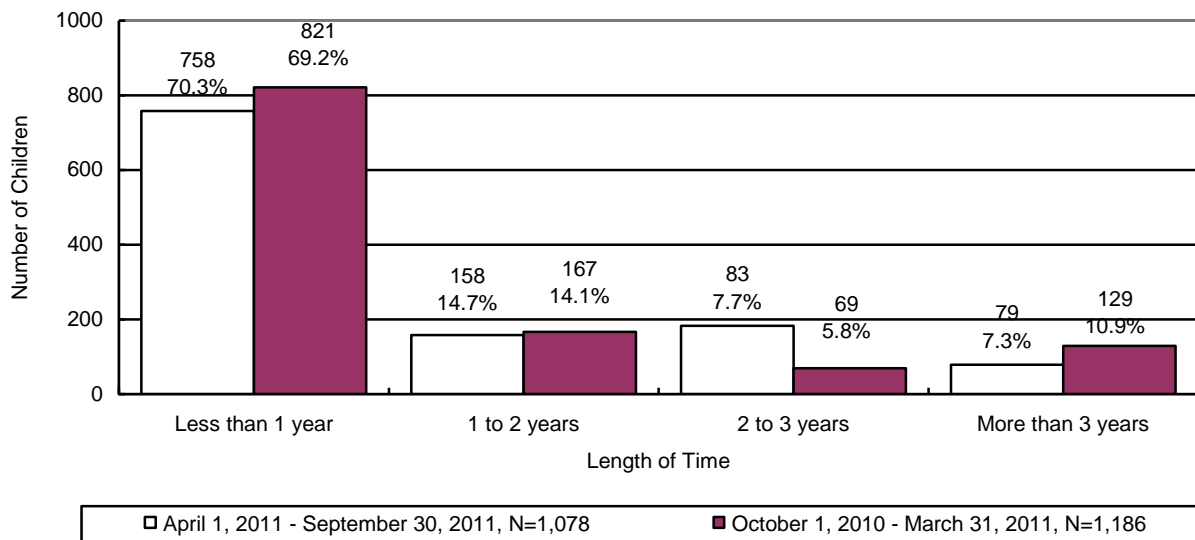
ADOPTIVE SERVICES

**CHART 44
THE NUMBER OF CHILDREN WITH A FINALIZED ADOPTION**



There were 1,078 children with a finalized adoption during the reporting period. Chart 45 displays the number of children with a finalized adoption during the reporting period by the average length of time in out-of-home placement before adoptive placement.

**CHART 45
THE NUMBER AND PERCENTAGE OF CHILDREN WITH A FINALIZED ADOPTION BY AVERAGE LENGTH OF TIME IN OUT-OF-HOME PLACEMENT BEFORE ADOPTIVE PLACEMENT**



The chart below displays the number of children with a finalized adoption by average length of time in adoptive placement before the final order of adoption.

CHART 46
THE NUMBER AND PERCENTAGE OF CHILDREN WITH A FINALIZED ADOPTION BY AVERAGE LENGTH OF TIME IN ADOPTIVE PLACEMENT BEFORE THE FINAL ORDER OF ADOPTION

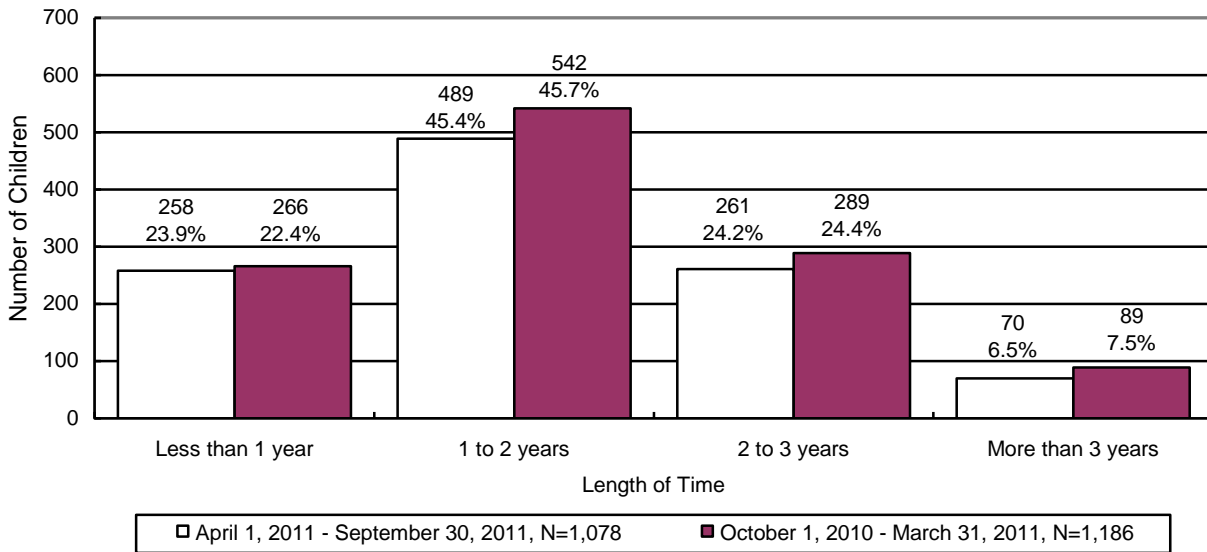


CHART 47
THE NUMBER OF CHILDREN WITH A FINALIZED ADOPTION BY THE MARITAL STATUS OF THE ADOPTIVE PARENT

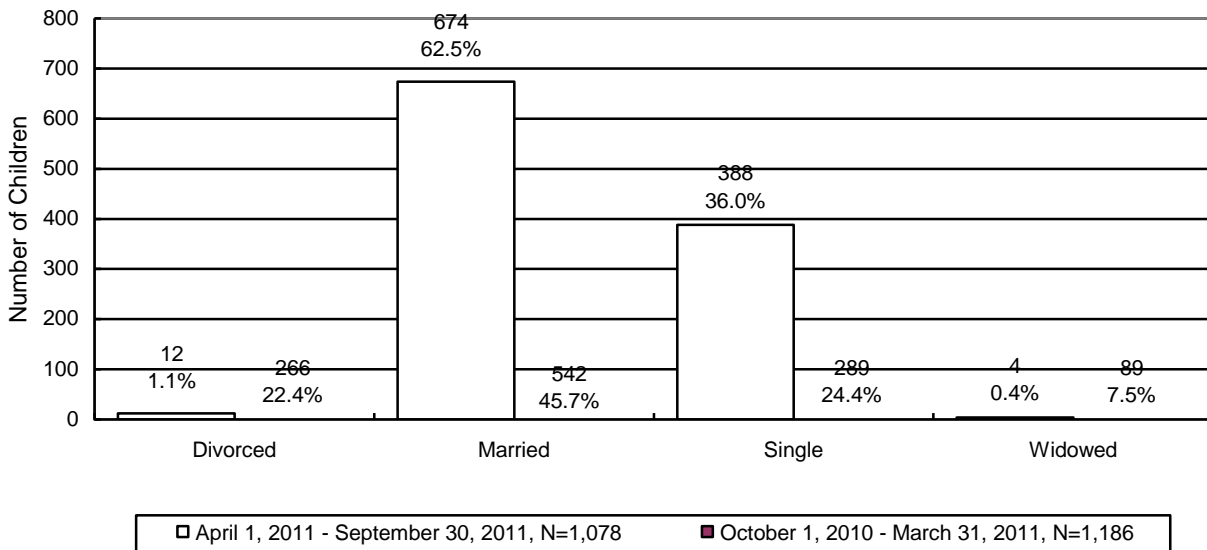


CHART 48
THE NUMBER OF CHILDREN WITH A FINALIZED ADOPTION BY THE RELATIONSHIP
OF THE ADOPTIVE PARENT TO THE CHILD

