



Douglas A. Ducey
Governor

Gregory McKay
Director

July 31, 2015

The Honorable Douglas A. Ducey
Governor of Arizona
1700 West Washington
Phoenix, Arizona 85005

Re: Semi-Annual Child Welfare Reporting Requirements

Dear Governor Ducey:

Pursuant to A.R.S. § 8-526, on July 27, 2015, the Arizona Department of Child Safety (DCS) submitted the semi-annual report on child welfare for the period of October 1, 2014 through March 31, 2015. This report provided information relative to reports of child abuse and neglect, investigations, shelter and receiving home services, foster homes, length of care, and adoptions.

It was originally reported that the Department's Office of Licensing and Regulation licensed 1,541 new foster homes while 785 homes left the system. As a result of a continuing review of the data in this report, the Department discovered that the number of newly licensed foster homes for this reporting period was in error. The actual number of newly licensed foster homes for this reporting period was 821 with the same number of foster homes leaving the system at 785 leaving a net gain of 36 additional foster homes.

We apologize for this error and have already begun establishing additional mechanisms to ensure the review of this data is accurate and that this error does not occur in the future. We will post the corrected version of this report to our website immediately.

If you have any questions, please contact me at (602) 255-2500.

Sincerely,

A handwritten signature in black ink, appearing to read "Gregory McKay".

Gregory McKay
Director

Enclosure

cc: President Andy Biggs, Arizona State Senate
Speaker David M. Gowan, Arizona State House of Representatives
Senator Nancy Barto, Chairman, Senate Health and Human Services Committee
Representative John M. Allen, Chairman, House Children and Family Affairs Committee
Secretary of State Michele Reagan
Kirk Adams, Chief of Staff, Office of the Governor
Joan Clark, Director, Arizona State Library, Archives, and Public Records
Bill Greeney, Director, Governor's Office of Strategic Planning and Budgeting
Laura Johnson, Policy Advisor for Human Services, Office of the Governor
Christina Corieri, Policy Advisor for Human Services, Office of the Governor
Lorenzo Romero Budget Director, Office of the Governor
John Johnson, Division Chief Council, Child and Family Protection Division, Office of the Attorney General
Emily Mercado, Analyst, Senate Health and Human Services Committee
Ingrid Garvey, Analyst, House Children and Family Affairs Committee
Melissa Taylor, Senior Policy and Operations Advisor, Senate Majority Caucus
Wendy Baldo, Chief of Staff, Senate Majority Caucus
Patsy Osmon, Policy Advisor, Senate Democratic Caucus
Pele Peacock, Policy Advisor and Staff Attorney, House Majority Caucus
Cynthia Aragon, Policy Advisor, House Democratic Caucus

CHILD WELFARE REPORTING REQUIREMENTS

SEMI-ANNUAL REPORT

FOR THE PERIOD OF

OCTOBER 1, 2014 THROUGH MARCH 31, 2015



ARIZONA REVISED STATUTES

[LAWS 2011, CHAPTER 147]

ARIZONA DEPARTMENT OF CHILD SAFETY

CHILD WELFARE REPORTING REQUIREMENTS

Arizona Revised Statute § 8-526 requires the Arizona Department of Child Safety (DCS) to compile information and produce a semi-annual report for the periods ending on March 31st and September 30th of each year regarding Child Welfare Services. This report is for the semi-annual reporting period beginning on October 1, 2014 and ending March 31, 2015.

TABLE OF CONTENTS

(Reporting period: October 1, 2014 through March 31, 2015)

	<u>Page</u>
EXECUTIVE SUMMARY	4
SEMI-ANNUAL COMPARISONS	6
REPORTS OF CHILD ABUSE AND NEGLECT	
Reports by reporting period and type of child maltreatment – statewide data.....	7
Sample communications to hotline, not meeting definition of a report.....	9
Reports received by priority - statewide data.....	10
Number of reports received by priority – county specific data.....	11
Number of reports received by maltreatment – statewide data.....	12
Number of reports received by maltreatment – county specific data.....	12-13
ASSIGNMENT OF INVESTIGATIONS	
Reports assigned for investigation by priority – statewide data.....	14
Reports assigned for investigation by priority – county specific data.....	15
Reports assigned for investigation by type of maltreatment – statewide data.....	16
Reports assigned for investigation by type of maltreatment – county specific data.....	16-17
INVESTIGATIONS OF CHILD ABUSE AND NEGLECT	
Reports not responded to by priority – county specific data.....	18
Investigations by priority – investigation open – statewide data.....	19
Investigations by priority – investigation open – county specific data.....	20
Investigations by type of child maltreatment – investigation open – statewide data.....	21
Investigations by type of child maltreatment – investigation open – county specific data.....	21-22
Reports where removal occurred – county specific data.....	23-24
COMPLETED INVESTIGATIONS	
Substantiation rate by reporting period.....	25
Investigations by priority – proposed substantiated reports – statewide data.....	26
Investigations by priority – proposed substantiated reports – county specific data.....	26-27
Investigations by type of child maltreatment – proposed substantiated reports – statewide data.....	27
Investigations by type of child maltreatment – proposed substantiated reports – county specific data.....	28
Investigations by priority – substantiated reports – statewide data.....	29

TABLE OF CONTENTS (continued)
 (Reporting period: October 1, 2014 through March 31, 2015)

	<u>Page</u>
Investigations by priority – substantiated reports county specific data.....	29-30
Investigations by type of child maltreatment – substantiated reports – statewide data.....	30
Investigations by type of child maltreatment – substantiated reports – county specific data.....	31
Investigations by priority – unsubstantiated reports – statewide data.....	32
Investigations by priority – unsubstantiated reports – county specific data.....	32-33
Investigations by type of child maltreatment – unsubstantiated reports – statewide data..	33
Investigations by type of child maltreatment – unsubstantiated reports – county specific data.....	34
 SAFE HAVEN INFANTS	
Number of Safe Haven infants delivered during reporting period.....	35
 CHILDREN ENTERING OUT-OF-HOME CARE	
Total children entering out-of-home care.....	35
New entries by county – children under 18 years voluntary placement.....	36
New entries by county.....	37-38
New entries – statewide data.....	39
 CHILDREN IN OUT-OF-HOME CARE	
Children in out-of-home care by reporting period.....	40
Children in group homes ages 0 through 6.....	41
Children in shelter ages 0 through 3.....	41
The average length of stay in a shelter placement for children ages 0-3 who were in a shelter placement on the last day of the reporting period.....	42
All children in care by age and ethnicity.....	42-43
All children in care by case plan goal and placement type.....	43-44
All children in care by placement type and age.....	45
Children in shelter or receiving homes for more than 21 days.....	46
Children in out-of-home care by length of time in care.....	46
Children in out-of-home care by legal status.....	47
Children receiving and not receiving required visitation.....	48
 FOSTER HOME LICENSING, CLOSURES, AND VISITATIONS	
Foster homes licensed.....	49
Child bed spaces available.....	49
Foster homes closed and reason for closure	49
Number of foster homes receiving the required visitation.....	50
 CHILDREN EXITING OUT-OF-HOME CARE	
Semi-Annual comparisons of total number exiting care – for all reasons.....	51
Total number exiting care.....	52
Total number exiting care – for reason of reunification with parents.....	53
Total number exiting care – for reason of living with other relatives.....	54
Total number exiting care – for reason of adoption.....	55
Total number exiting care – for reason of guardianship.....	56

TABLE OF CONTENTS (continued)
 (Reporting period: October 1, 2014 through March 31, 2015)

	<u>Page</u>
Total number exiting care – for reason of reaching age of majority.....	57
Total number exiting care – for reason of transfer to another agency.....	58
Total number exiting care – for reason of runaway.....	59
Total number exiting care – for reason of death of child.....	60
Total number exiting care – by cause of death.....	61
Total number exiting for reason of death of child – with alleged abuse.....	61
 CHILDREN WITH CASE PLAN GOALS OF ADOPTION	
Number of children with a petition for termination of parental rights.....	62
The placement and number of children with case plan goals of adoption by age.....	63
The placement and number of children with case plan goals of adoption by ethnicity.....	64
The placement and number of children with case plan goals of adoption by legal status..	64
Number of children – length of time from change of case plan goals of adoption to adoptive placement.....	65
Number of children in an adoptive placement by the marital status of the adoptive parent.....	65
Number of children in an adoptive placement by the relationship of the adoptive parent.....	66
 DISRUPTIONS	
Number of children with a case plan goal of adoption in an adoptive placement and disrupted by age and ethnicity.....	66
Number of children with a case plan goal of adoption in an adoptive placement and disrupted by the marital status of the adoptive parent.....	67
Number of children with a case plan goal of adoption in an adoptive placement and disrupted by the relationship of the adoptive parent.....	67
 ADOPTIVE SERVICES	
Number of children with a finalized adoption.....	68
Number of children with a finalized adoption by average length of time in out-of-home placement before adoptive placement.....	68
Number of children with a finalized adoption by average length of time in adoptive placement before the final order of adoption.....	69
Number of Children with a finalized adoption by the marital status of the adoptive parent.....	69
Number of children with a finalized adoption by the relationship of the adoptive parent.	70

Executive Summary

The Arizona Department of Child Safety is pleased to publish this semi-annual report for October 2014 through March 2015 in compliance with A.R.S. § 8-526. This report is intended to provide its readers an opportunity to review the impact of the Department's process improvements in relation to key performance indicators.

In May 2014, the Department of Child Safety was created as a permanent, stand-alone agency with the express mission of safeguarding Arizona's abused and neglected children. The legislation enacted on May 29, 2014 included additional funding for an increase in child safety specialists and case aides.

The data contained within this Semi-Annual Report assists with identifying where continued focus is needed by the Department, stakeholders, policy makers, and advocacy groups. By working collaboratively to address the needs of children and to prevent child abuse, additional targeted resources and strategies that are put in place to improve outcomes for children will be implemented in a more coordinated and timely manner.

Child Abuse Hotline and Investigations

The statewide Child Abuse Hotline received 25,508 calls that met the statutory criteria for a report. Of the reports subject to substantiation during this reporting period, the preliminary number of reports that were substantiated is 1,606 (6%). An additional 1,422 were proposed for substantiation by child welfare specialists and are currently awaiting the results of the appeals process. Over time, the number of substantiated and proposed substantiated reports associated with this time period will increase as investigation findings are entered into Children's Information Library and Data Source (CHILDS).

Children in Out-of-Home Care

The Department remains committed to working with the community to keep children safe and prevent the need for children to be removed from their homes. Notwithstanding this commitment, the number of children in out-of-home care increased from 16,990 in the prior reporting period to 17,592 in March 2015.

The Department continues to make efforts to place children who have been removed from their home in the most family-like setting possible. In March 2015, 14,176 children – or approximately 80.5 percent of all children in out-of-home care – were placed with relatives or licensed foster parents. An additional 35 children were placed with their parents on a trial home visit and 503 youth were residing in independent living settings. Efforts to increase the number of licensed foster parents who are able to meet the needs of children requiring out-of-home placement resulted in 821 new homes being licensed during the reporting period.

The state requires monthly face-to-face visitation with children in foster care. The current report shows that 87.1 percent of the children in foster care received their visitation during the last month of the reporting period. There is a strong correlation between caseworker visits with children and

positive outcomes for these children, such as achieving permanency and other indicators of child well-being. The Department continues to make efforts to improve our rate of visitation.

Permanency for Children

The Department continues to work toward achieving permanency for children placed in out-of-home care. Arizona is a national leader in the number of finalized adoptions. The total number of children achieving permanency through adoption was 1,629 during this reporting period, compared to 1,552 during the same reporting period last year.

Challenges

The Department continues to face both workload and process challenges in its efforts to ensure safety and promote permanency for abused and neglected children. Examples of the more pressing challenges the Department continues to face include:

- Increased number of children in out-of-home care
- Significant backlog of overdue investigations
- Improving the hiring and training of qualified personnel

As noted previously, the legislation enacted to create the Department included funding to increase the number of child safety specialists. Hiring these specialists during fiscal year 2015 presented significant challenge to the Department. However, in March 2015 the Department filled nearly all of its budgeted positions for child safety specialists including staff at the Hotline.

Additionally, the Department continues to develop strategies to mitigate challenges that include:

- The high prevalence of substance abuse in clients which exacerbates client problems.
- The recruitment of foster and adoptive homes for youth ages 12 to 18 years old and sibling groups.

The Department continues to assess processes and program controls to identify ways to address these challenges. Solutions will include partnering with the community and stakeholders to ensure that the safety and wellbeing of the children is always the top priority. The Department continues to work in partnership with the federal government to meet the federal Child and Family Service Review (CFSR) standards to improve outcomes for the children and families it serves.

Semi-Annual Comparisons

	Apr 2011 through Sep 2011	Oct 2011 through Mar 2012	Apr 2012 through Sep 2012	Oct 2012 through Mar 2013	Apr 2013 through Sep 2013	Oct 2013 through Mar 2014	Apr 2014 through Sep 2014	Oct 2014 through Mar 2015
Number of Reports Received	19,666	20,466	21,625	22,161	22,032	22,956	25,076	25,508
Number of Reports Substantiated ¹	2,522	2,748	2,809	2,588	2,704	3,190	3,456	1,606
Substantiation Rate	15%	14%	14%	13%	12%	14%	14%	6%
Number of Reports Investigated & Closed	9,953	10,345	9,168	10,923	11,212	11,392	12,038	13,045
Number of Reports Responded to	19,245	19,274	20,413	20,253	20,122	22,162	24,435	25,182
Number of new removals	4,531	4,968	5,716	5,101	5,702	5,701	6,461	5,935
Number of new removals with Voluntary under 18	155	150	116	97	118	90	189	131
Number of Children in Out-of-Home Care on the Last Day of Reporting Period	11,535	12,453	14,111	14,314	15,037	15,751	16,990	17,592
Number of Children in Shelter for More than 21 Days	842	713	764	792	824	802	868	900
Number and Percentage of Children Receiving Visitation In the Last Month of Reporting Period	9,363 (81.2%)	9,728 (78.1%)	10,404 (73.7%)	12,101 (84.5%)	12,997 (86.4%)	13,818 (87.7%)	14,846 (87.4%)	15,323 (87.1%)
Number and Percentage of Children not Receiving Visitation	2,172 (18.8%)	2,725 (21.9%)	3,707 (26.3%)	2,213 (15.5%)	2,040 (13.6%)	1,933 (12.3%)	2,144 (12.6%)	2,269 (12.9%)
Number and Percentage of Parents Receiving Visitation	994 (54.5%)	1,081 (57.1%)	1,017 (51.2%)	1,058 (50.9%)	1,157 (52.4%)	1,344 (53.8%)	1,315 (52.0%)	1,372 (55.7%)
Number of Licensed Foster Homes ²	3,496	3,480	3,748	3,516	3,900	4,329	4,397	4,497
Number of Foster Home Spaces Available to DCS	8,191	8,572	7,716	8,579	8,573	9,049	9,061	9,079
Number of New Foster Homes	582	663	999	722	717	1,050	756	821
Number of Foster Homes Closed	681	679	747	740	715	787	822	785
Number and Percentage of Foster Homes Receiving Visitation In the Last Qtr. Of Reporting Period	3,121 (89.3%)	3,132 (79.9%)	3,095 (82.6%)	3,316 (92.7)	3,491 (89.5%)	3,689 (85.2%)	3,949 (89.8%)	3,881 (86.3%)
Number and Percentage of Foster Homes not Receiving Visitation	375 (10.7%)	790 (20.1)	653 (17.4%)	260 (7.3%)	409 (10.5%)	640 (14.8%)	448 (10.2%)	616 (13.7%)
Number of Children Leaving DCS Custody	3,574	3,826	3,923	4,668	4,805	4,786	5,042	5,063
Number of Children With a Case Plan Goal of Adoption	2,561	2,663	2,719	2,852	3,311	3,417	3,377	3,449
Number of Children With a Finalized Adoption	1,078	1,224	1,025	1,270	1,215	1,518	1,552	1,629

¹ Since the appeals process delays the substantiation of reports, revisions to the substantiation rate for the prior reporting period will occur with every semi-annual report produced.

² The number of available foster homes includes homes reported by the Department's Home Recruitment, Study and Supervision contractors along with foster homes utilized for appropriate children in coordination with the Division of Developmental Disabilities.

Reports of Child Abuse & Neglect

Child abuse and neglect are defined in A.R.S. §8-201 and A.R.S. §13-3623 (A). These definitions provide the major categories in this report.

Between October 1, 2014 and March 31, 2015, there were 25,508 incoming communications to the Child Abuse Hotline that met the criteria for a report of abuse or neglect. Of these, 326 were within the jurisdiction of military or tribal governments and were referred to those jurisdictions. Compared to one year ago, there has been an 11.1% increase in reports received by the Child Abuse Hotline meeting the criteria of a report of abuse or neglect.

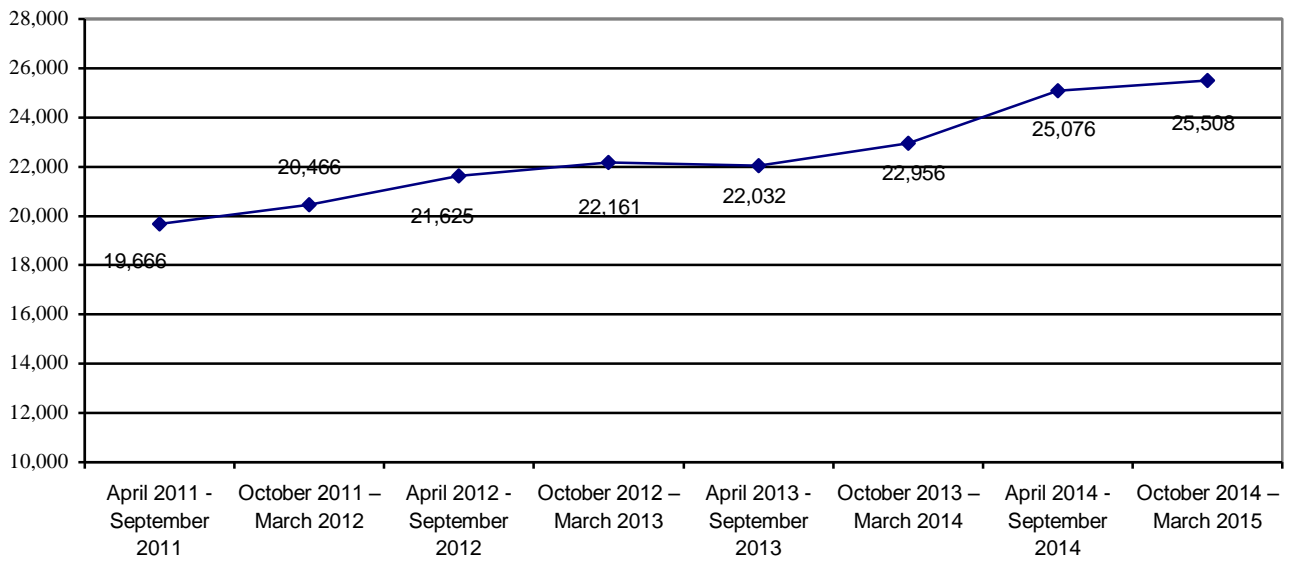
Table 1 shows the number of reports received by the Department by category of maltreatment for the current and past reporting periods. One consistent trend is the increase in the proportion of reports that meet the criteria of neglect. The Department is examining current Child Abuse Hotline policies and procedures to improve objectivity within screening tools and improve inter-rater reliability.

**TABLE 1
REPORTS BY REPORTING PERIOD AND TYPE OF MALTREATMENT**

	Neglect	Physical Abuse	Sexual Abuse	Emotional Abuse	Total
April 2011 – September 2011	13,158 66.8%	5,615 28.6%	739 3.8%	154 0.8%	19,666 100.0%
October 2011 – March 2012	13,369 65.3%	6,198 30.3%	739 3.6%	160 0.8%	20,466 100.0%
April 2012 – September 2012	14,722 68.1%	5,974 27.6%	764 3.5%	165 0.8%	21,625 100.0%
October 2012 – March 2013	14,916 67.2%	6,263 28.3%	815 3.7%	167 0.8%	22,161 100.0%
April 2013 – September 2013	15,560 70.6%	5,607 25.5%	731 3.3%	134 0.6%	22,032 100.0%
October 2013 – March 2014	15,766 68.7%	6,248 27.2%	772 3.4%	170 0.7%	22,956 100.0%
April 2014 – September 2014	18,022 71.9%	6,074 24.2%	847 3.4%	133 0.5%	25,076 100.0%
October 2014 – March 2015	18,338 71.9%	6,254 24.5%	787 3.1%	129 0.5%	25,508 100.0%

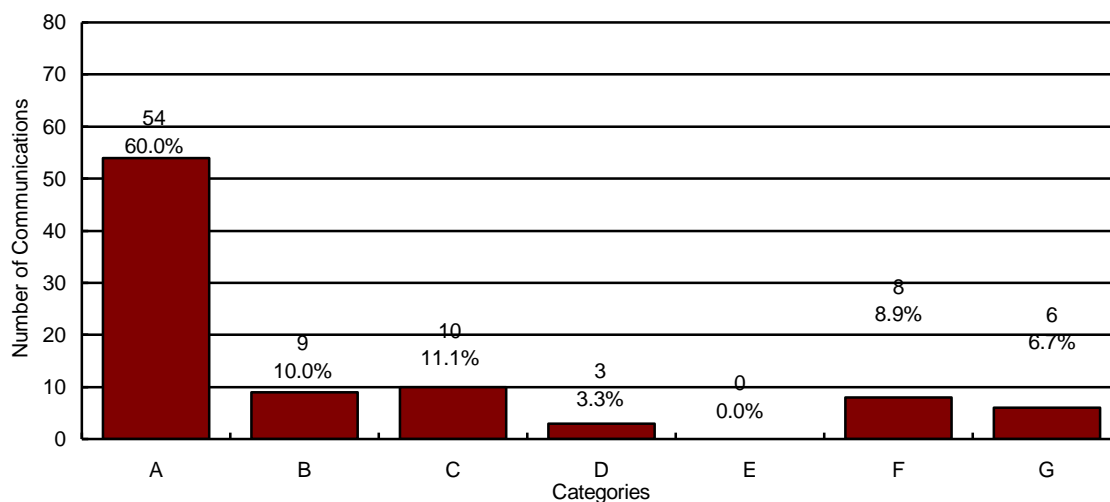
Chart 1 illustrates that the number of reports received by the Centralized Intake Hotline has increased by 2,552 reports over the same reporting period last year. The chart below also shows that the significant upward trend in reports received by the Centralized Intake Hotline has continued since FY 2011. This in turn resulted in more children entering out-of-home care (see Chart 18 for information on the out-of-home population).

**CHART 1
REPORTS OF CHILD ABUSE AND NEGLECT BY REPORTING PERIOD**



The Centralized Intake Hotline received a total of 74,961 calls during the reporting period. Of those, 71,409 were answered by a hotline specialist and 2,504 were abandoned calls. The 71,409 yielded 45,901 communications and 25,508 reports of abuse and neglect. Communications do not meet the statutory criteria of a report of maltreatment. A random sample was selected to represent the types of calls that do not get classified as reports of abuse and neglect. This random sample is contained in the chart below.

CHART 2
SAMPLE OF COMMUNICATIONS TO THE CENTRALIZED INTAKE HOTLINE THAT DO NOT MEET THE STATUTORY REQUIREMENTS OF A REPORT OF ABUSE OR NEGLECT



N=90

- A = Concern Only/No Allegation of Child Abuse or Neglect**
- B = Out of DCS Jurisdiction**
- C = Call Appropriate for Law Enforcement Jurisdiction³**
- D = Non-Caretaker Neglect/Child No Longer at Risk**
- E = Insufficient Information**
- F = Truancy/Custody Issues**
- G = Current Case Questions or Referrals**

All communications that do not meet the statutory requirements for a field investigation of abuse or neglect are reviewed within 48 hours by Department of Child Safety quality assurance staff.

³ The category “Call Appropriate for Law Enforcement Jurisdiction” refers to a situation where the alleged perpetrator is not a parent or primary caretaker and the allegations, if true, would constitute a crime.

Chart 3 below provides information on the number of reports that met each of the Centralized Intake Hotline priority classifications in the current and past reporting periods. In Table 2 and Table 3, data on total reports by priority is shown by county for the current and previous reporting periods. The priority determinations are made by personnel at the child abuse hotline after the review of multiple factors, however, below is a high level summary of each response time criteria.

PRIORITY 1: Present danger refers to an immediate, significant and clearly observable family condition present now which has resulted in or is likely to result in serious or severe harm requiring an immediate initial response.

PRIORITY 2: Impending danger may not be occurring in the present but is likely to occur in the immediate to near future and will likely result in serious or severe harm to a child.

PRIORITY 3: Reports that do not rise to the level of present or impending danger, but there is an incident of abuse or neglect that has happened in the past 30 days. This includes a current minor injury to the child.

PRIORITY 4: Reports that do not rise to the level of present or impending danger, but 1) there is an incident of abuse or neglect that happened more than 30 days ago, or 2) the date of last occurrence is unknown and there is no current physical indicator of maltreatment, or 3) there is unreasonable risk of harm to the child’s health or welfare.

**CHART 3
NUMBER OF REPORTS RECEIVED BY PRIORITY**

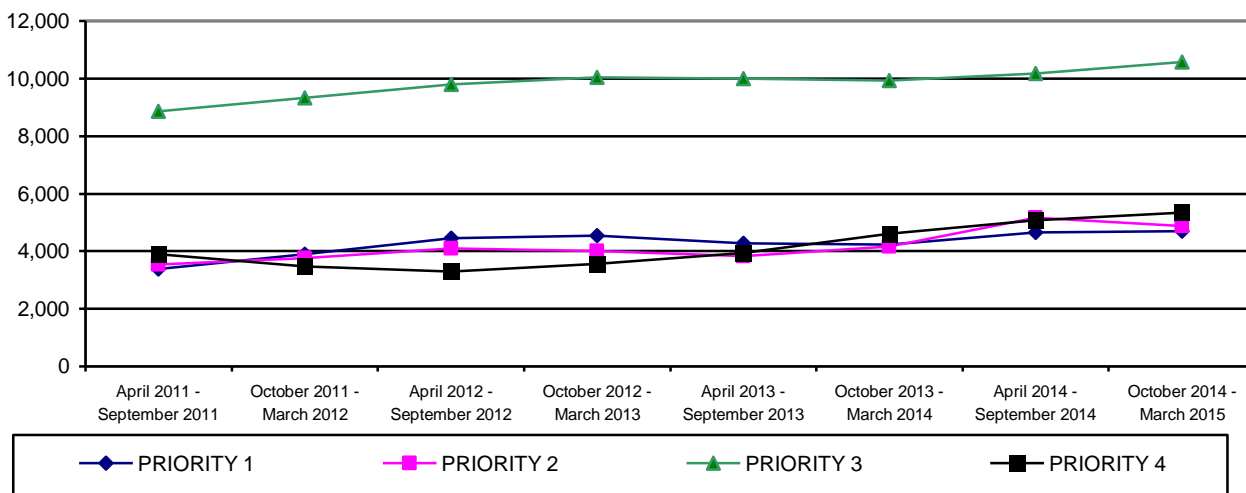


TABLE 2
NUMBER OF REPORTS RECEIVED BY PRIORITY AND COUNTY FOR PERIOD OF
OCTOBER 1, 2014 THROUGH MARCH 31, 2015

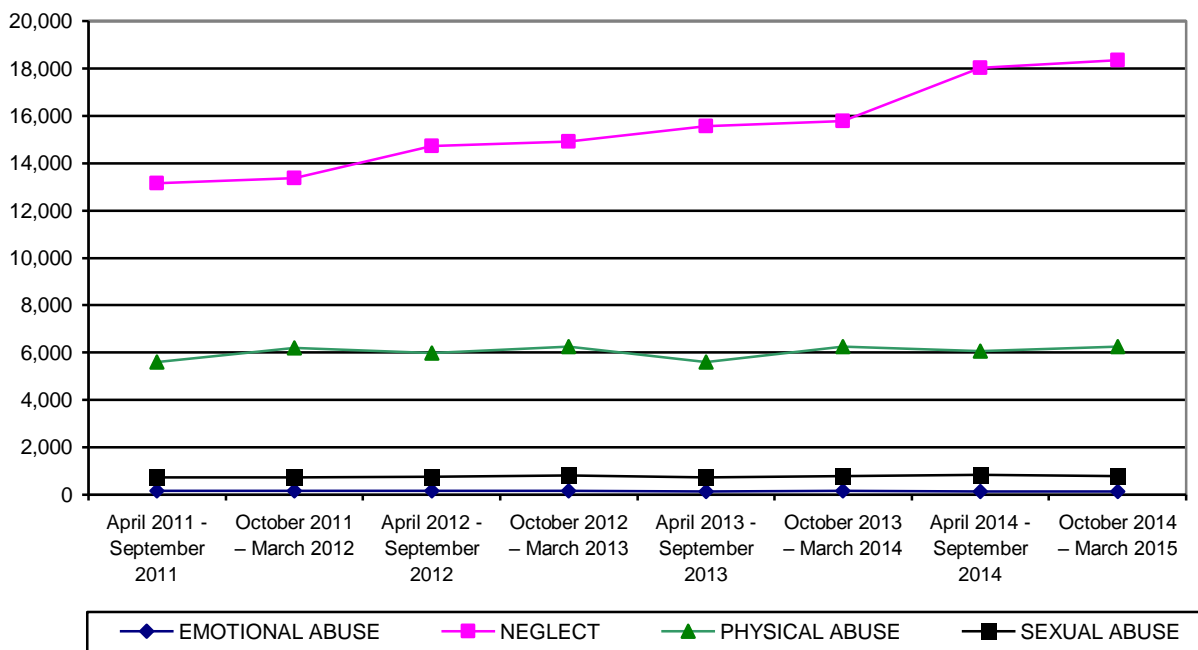
COUNTY	PRIORITY 1	PRIORITY 2	PRIORITY 3	PRIORITY 4	TOTAL	% OF TOTAL
APACHE	19	14	33	22	88	0.3%
COCHISE	74	103	164	58	399	1.6%
COCONINO	98	91	229	86	504	2.0%
GILA	34	54	65	32	185	0.7%
GRAHAM	31	36	65	48	180	0.7%
GREENLEE	3	0	4	3	10	<0.1%
LA PAZ	20	10	21	16	67	0.3%
MARICOPA	2,885	2,872	6,182	3,242	15,181	59.4%
MOHAVE	145	176	308	133	762	3.0%
NAVAJO	82	92	131	90	395	1.6%
PIMA	782	868	2,099	944	4,693	18.4%
PINAL	313	316	688	354	1,671	6.6%
SANTA CRUZ	17	16	52	64	149	0.6%
YAVAPAI	114	126	325	164	729	2.9%
YUMA	83	105	216	91	495	1.9%
STATEWIDE	4,700	4,879	10,582	5,347	25,508	100.0%
% OF TOTAL	18.4%	19.1%	41.5%	21.0%	100.0%	

TABLE 3
NUMBER OF REPORTS RECEIVED BY PRIORITY AND COUNTY FOR PERIOD OF
APRIL 1, 2014 THROUGH SEPTEMBER 30, 2014

COUNTY	PRIORITY 1	PRIORITY 2	PRIORITY 3	PRIORITY 4	TOTAL	% OF TOTAL
APACHE	17	29	40	21	107	0.4%
COCHISE	86	105	178	57	426	1.7%
COCONINO	73	79	179	94	425	1.7%
GILA	70	73	80	34	257	1.0%
GRAHAM	29	45	70	33	177	0.7%
GREENLEE	3	12	16	3	34	0.1%
LA PAZ	9	17	29	15	70	0.3%
MARICOPA	2,791	2,961	5,861	3,067	14,680	58.5%
MOHAVE	189	160	314	132	795	3.2%
NAVAJO	88	92	165	65	410	1.6%
PIMA	746	955	1,970	904	4,575	18.2%
PINAL	324	361	694	363	1,742	7.0%
SANTA CRUZ	22	24	50	30	126	0.5%
YAVAPAI	102	130	327	155	714	2.9%
YUMA	109	120	201	108	538	2.2%
STATEWIDE	4,658	5,163	10,174	5,081	25,076	100.0%
% OF TOTAL	18.6%	20.6%	40.5%	20.3%	100.0%	

The following chart and tables provide the number of reports categorized by type of maltreatment. The total number of reports received by type of maltreatment is displayed in Chart 4. In Table 4 and Table 5 data on the total reports by type of maltreatment is shown by county for the current and previous reporting periods.

**CHART 4
NUMBER OF REPORTS RECEIVED BY TYPE OF MALTREATMENT**



**TABLE 4
NUMBER OF REPORTS RECEIVED BY TYPE OF MALTREATMENT AND COUNTY FOR PERIOD OF OCTOBER 1, 2014 THROUGH MARCH 31, 2015**

COUNTY	EMOTIONAL ABUSE	NEGLECT	PHYSICAL ABUSE	SEXUAL ABUSE	TOTAL	% OF TOTAL
APACHE	1	58	26	3	88	0.3%
COCHISE	1	285	95	18	399	1.6%
COCONINO	3	332	142	27	504	2.0%
GILA	1	142	36	6	185	0.7%
GRAHAM	1	132	39	8	180	0.7%
GREENLEE	0	7	3	0	10	<0.1%
LA PAZ	0	59	6	2	67	0.3%
MARICOPA	77	10,777	3,843	484	15,181	59.4%
MOHAVE	4	569	171	18	762	3.0%
NAVAJO	2	302	85	6	395	1.6%
PIMA	26	3,461	1,086	120	4,693	18.4%
PINAL	9	1,213	399	50	1,671	6.6%
SANTA CRUZ	0	98	43	8	149	0.6%
YAVAPAI	0	537	171	21	729	2.9%
YUMA	4	366	109	16	495	1.9%
STATEWIDE	129	18,338	6,254	787	25,508	100.0%
% OF TOTAL	0.5%	71.9%	24.5%	3.1%	100.0%	

**TABLE 5
NUMBER OF REPORTS RECEIVED BY TYPE OF MALTREATMENT AND COUNTY FOR
PERIOD OF APRIL 1, 2014 THROUGH SEPTEMBER 30, 2014**

COUNTY	EMOTIONAL ABUSE	NEGLECT	PHYSICAL ABUSE	SEXUAL ABUSE	TOTAL	% OF TOTAL
APACHE	3	75	23	6	107	0.4%
COCHISE	3	312	99	12	426	1.7%
COCONINO	0	305	99	21	425	1.7%
GILA	2	202	46	7	257	1.0%
GRAHAM	1	127	42	7	177	0.7%
GREENLEE	0	25	8	1	34	0.1%
LA PAZ	0	48	20	2	70	0.3%
MARICOPA	77	10,394	3,695	514	14,680	58.5%
MOHAVE	4	591	173	27	795	3.2%
NAVAJO	2	311	83	14	410	1.6%
PIMA	16	3,372	1,056	131	4,575	18.2%
PINAL	18	1,262	414	48	1,742	7.0%
SANTA CRUZ	1	91	30	4	126	0.5%
YAVAPAI	4	517	167	26	714	2.9%
YUMA	2	390	119	27	538	2.2%
STATEWIDE	133	18,022	6,074	847	25,076	100.0%
% OF TOTAL	0.5%	71.9%	24.2%	3.4%	100.0%	

ASSIGNMENT OF INVESTIGATIONS

During the current reporting period, there were 25,508 calls to the Hotline that met the statutory criteria for a report. Of those, 326 reports fell within the jurisdiction of military or tribal governments. All reports had response data entered at the time this report was compiled. The assignment of the remaining 25,182 reports for investigation was as follows:

The following tables and charts in this section provide statewide and county level information on these reports assigned to DCS. Of these, DCS completed 13,045 (51.8%) of their assigned investigations. Those not completed remain open when the investigation is still in process, when the specialist is waiting for the results of a law enforcement investigation and/or receipt of records that impact the investigation finding, or when the investigation has been completed but is awaiting supervisory review and approval.

**CHART 5
NUMBER OF REPORTS ASSIGNED FOR INVESTIGATION BY PRIORITY AND REPORTING PERIOD**

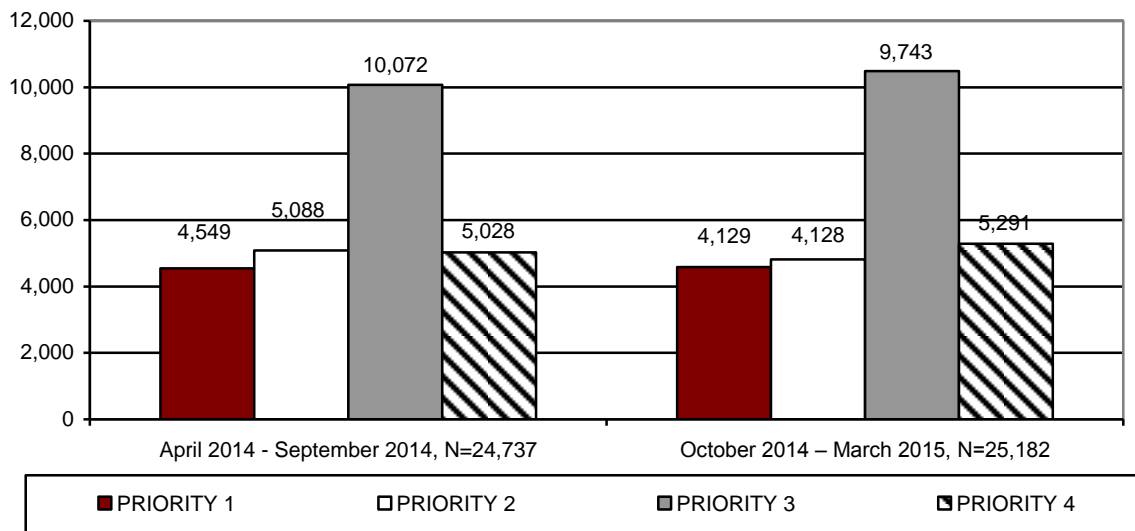


TABLE 6
NUMBER OF REPORTS ASSIGNED FOR INVESTIGATION BY PRIORITY AND COUNTY
FOR PERIOD OF OCTOBER 1, 2014 THROUGH MARCH 31, 2015

COUNTY	PRIORITY 1	PRIORITY 2	PRIORITY 3	PRIORITY 4	TOTAL	% OF TOTAL
APACHE	11	9	23	14	57	0.2%
COCHISE	74	103	164	58	399	1.6%
COCONINO	78	80	214	76	448	1.8%
GILA	26	50	62	30	168	0.7%
GRAHAM	30	35	61	48	174	0.7%
GREENLEE	3	0	4	3	10	<0.1%
LA PAZ	17	7	18	14	56	0.2%
MARICOPA	2,870	2,864	6,178	3,232	15,144	60.1%
MOHAVE	142	173	308	132	755	3.0%
NAVAJO	57	74	117	78	326	1.3%
PIMA	771	862	2,088	940	4,661	18.5%
PINAL	294	311	672	350	1,627	6.5%
SANTA CRUZ	17	16	52	64	149	0.6%
YAVAPAI	112	126	316	161	715	2.8%
YUMA	83	104	215	91	493	2.0%
STATEWIDE	4,585	4,814	10,492	5,291	25,182	100.0%
% OF TOTAL	18.2%	19.1%	41.7%	21.0%	100.0%	

TABLE 7
NUMBER OF REPORTS ASSIGNED FOR INVESTIGATION BY PRIORITY AND COUNTY
FOR PERIOD OF APRIL 1, 2014 THROUGH SEPTEMBER 30, 2014

COUNTY	PRIORITY 1	PRIORITY 2	PRIORITY 3	PRIORITY 4	TOTAL	% OF TOTAL
APACHE	12	21	27	14	74	0.3%
COCHISE	86	105	178	57	426	1.7%
COCONINO	55	71	160	82	368	1.5%
GILA	56	66	70	30	222	0.9%
GRAHAM	26	39	65	31	161	0.7%
GREENLEE	3	12	16	3	34	0.1%
LA PAZ	7	16	27	12	62	0.3%
MARICOPA	2,776	2,952	5,852	3,060	14,640	59.1%
MOHAVE	183	155	312	131	781	3.2%
NAVAJO	59	76	149	60	344	1.4%
PIMA	740	951	1,963	901	4,555	18.3%
PINAL	317	352	680	357	1,706	6.9%
SANTA CRUZ	22	24	50	30	126	0.5%
YAVAPAI	100	129	322	153	704	2.9%
YUMA	107	119	201	107	534	2.2%
STATEWIDE	4,549	5,088	10,072	5,028	24,737	100.0%
% OF TOTAL	18.4%	20.6%	40.7%	20.3%	100.0%	

CHART 6
NUMBER OF REPORTS ASSIGNED FOR INVESTIGATION BY TYPE OF MALTREATMENT AND REPORTING PERIOD

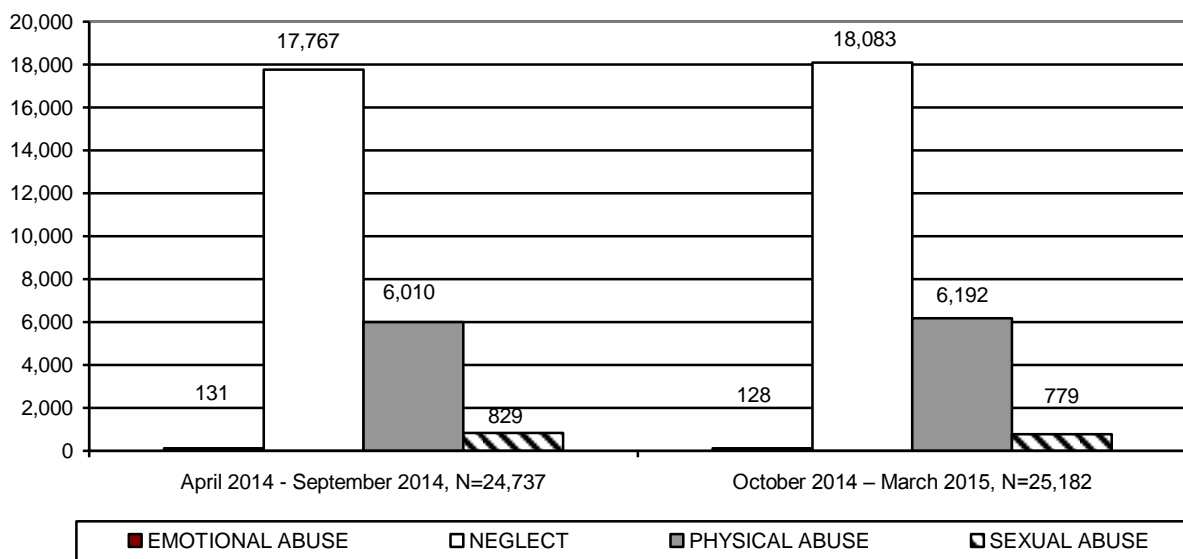


TABLE 8
NUMBER OF REPORTS ASSIGNED FOR INVESTIGATION BY TYPE OF MALTREATMENT AND COUNTY FOR PERIOD OF OCTOBER 1, 2014 THROUGH MARCH 31, 2015

COUNTY	EMOTIONAL ABUSE	NEGLECT	PHYSICAL ABUSE	SEXUAL ABUSE	TOTAL	% OF TOTAL
APACHE	1	35	19	2	57	0.2%
COCHISE	1	285	95	18	399	1.6%
COCONINO	3	291	129	25	448	1.8%
GILA	1	128	33	6	168	0.7%
GRAHAM	1	126	39	8	174	0.7%
GREENLEE	0	7	3	0	10	<0.1%
LA PAZ	0	50	4	2	56	0.2%
MARICOPA	77	10,750	3,835	482	15,144	60.1%
MOHAVE	4	563	170	18	755	3.0%
NAVAJO	1	245	75	5	326	1.3%
PIMA	26	3,437	1,079	119	4,661	18.5%
PINAL	9	1,178	391	49	1,627	6.5%
SANTA CRUZ	0	98	43	8	149	0.6%
YAVAPAI	0	526	168	21	715	2.8%
YUMA	4	364	109	16	493	2.0%
STATEWIDE	128	18,083	6,192	779	25,182	100.0%
% OF TOTAL	0.5%	71.8%	24.6%	3.1%	100.0%	

**TABLE 9
NUMBER OF REPORTS ASSIGNED FOR INVESTIGATION BY TYPE OF MALTREATMENT
AND COUNTY FOR PERIOD OF APRIL 1, 2014 THROUGH SEPTEMBER 30, 2014**

COUNTY	EMOTIONAL ABUSE	NEGLECT	PHYSICAL ABUSE	SEXUAL ABUSE	TOTAL	% OF TOTAL
APACHE	1	56	15	2	74	0.3%
COCHISE	3	312	99	12	426	1.7%
COCONINO	0	266	87	15	368	1.5%
GILA	2	174	40	6	222	0.9%
GRAHAM	1	115	39	6	161	0.7%
GREENLEE	0	25	8	1	34	0.1%
LA PAZ	0	42	18	2	62	0.3%
MARICOPA	77	10,360	3,689	514	14,640	59.1%
MOHAVE	4	582	169	26	781	3.2%
NAVAJO	2	254	76	12	344	1.4%
PIMA	16	3,357	1,051	131	4,555	18.3%
PINAL	18	1,236	406	46	1,706	6.9%
SANTA CRUZ	1	91	30	4	126	0.5%
YAVAPAI	4	510	165	25	704	2.9%
YUMA	2	387	118	27	534	2.2%
STATEWIDE	131	17,767	6,010	829	24,737	100.0%
% OF TOTAL	0.5%	71.8%	24.3%	3.4%	100.0%	

INVESTIGATIONS OF CHILD ABUSE AND NEGLECT

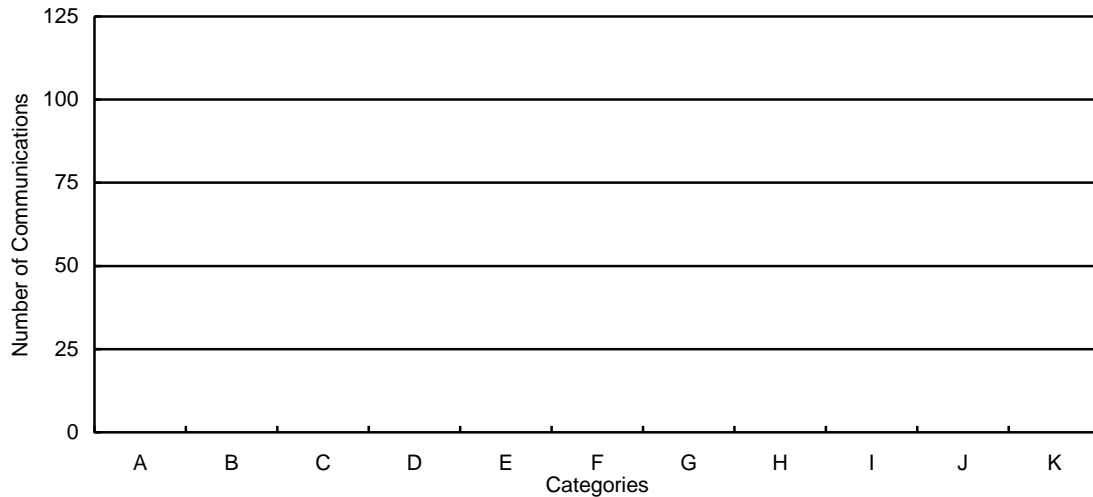
**TABLE 10
NUMBER OF REPORTS WITHOUT RESPONSE DATA BY PRIORITY AND COUNTY FOR
PERIOD OF OCTOBER 1, 2014 THROUGH MARCH 31, 2015**

COUNTY	PRIORITY 1	PRIORITY 2	PRIORITY 3	PRIORITY 4	TOTAL	% OF TOTAL
APACHE	0	0	0	0	0	0.0%
COCHISE	0	0	0	0	0	0.0%
COCONINO	0	0	0	0	0	0.0%
GILA	0	0	0	0	0	0.0%
GRAHAM	0	0	0	0	0	0.0%
GREENLEE	0	0	0	0	0	0.0%
LA PAZ	0	0	0	0	0	0.0%
MARICOPA	0	0	0	0	0	0.0%
MOHAVE	0	0	0	0	0	0.0%
NAVAJO	0	0	0	0	0	0.0%
PIMA	0	0	0	0	0	0.0%
PINAL	0	0	0	0	0	0.0%
SANTA CRUZ	0	0	0	0	0	0.0%
YAVAPAI	0	0	0	0	0	0.0%
YUMA	0	0	0	0	0	0.0%
STATEWIDE	0	0	0	0	0	0.0%
% OF TOTAL	0.0%	0.0%	0.0%	0.0%	0.0%	

By statute, a random sample of reports that do not have data on an investigative response in each reporting period is required. In addition, short descriptions of these reports are also required. As all reports were responded to during this period, there is no data to be displayed in Table 10 or Chart 7. Chart 7 would have displayed the reports in brief descriptive categories.

All reports were responded to during this reporting period. Therefore, no data will be displayed in Chart 7 below.

**CHART 7
NUMBER OF REPORTS WITHOUT RESPONSE DATA BY CATEGORY FOR THE PERIOD
OF OCTOBER 1, 2014 THROUGH MARCH 31, 2015**



N=0

- A = Adolescent, Past Abuse, No Current Injuries**
- B = Inadequate Housekeeping Standards**
- C = Inappropriate Vehicle Operation**
- D = No Specific Allegations**
- E = Past Abuse no current injuries**
- F = Adolescent, current minor injuries**
- G = Non-adolescent, current minor injuries**
- H = Poor parenting skills**
- I = Left with inappropriate caregiver**
- J = Law Enforcement Issue**
- K = Out of Control Teenager**

CHART 8
NUMBER OF REPORTS ASSIGNED FOR INVESTIGATION BY PRIORITY AND REPORTING PERIOD FOR REPORTS OPEN FOR INVESTIGATION

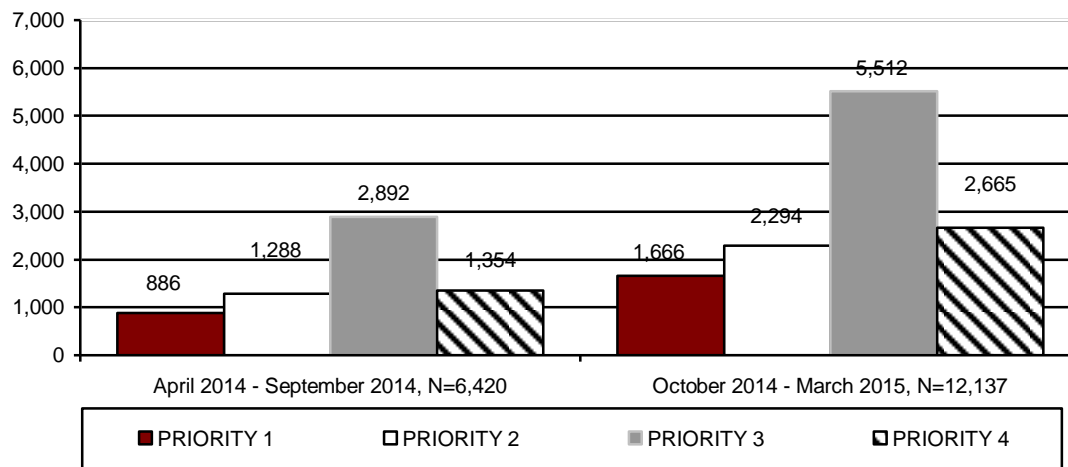


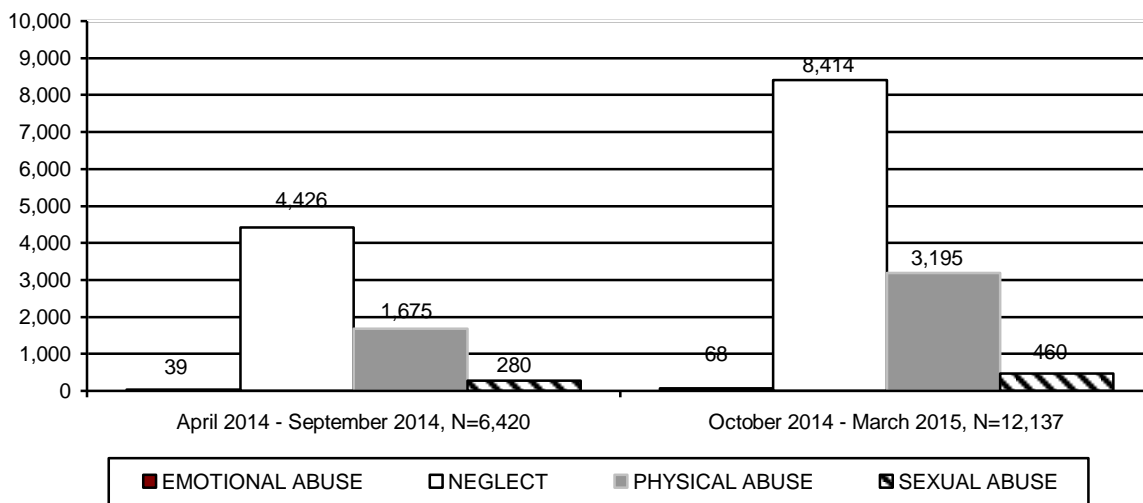
TABLE 11
NUMBER OF REPORTS BY PRIORITY AND COUNTY FOR REPORTS OPEN FOR INVESTIGATION FOR PERIOD OF OCTOBER 1, 2014 THROUGH MARCH 31, 2015

COUNTY	PRIORITY 1	PRIORITY 2	PRIORITY 3	PRIORITY 4	TOTAL	% OF TOTAL
APACHE	2	1	2	2	7	0.1%
COCHISE	38	65	108	39	250	2.1%
COCONINO	16	37	66	21	140	1.2%
GILA	22	37	57	27	143	1.2%
GRAHAM	12	17	33	29	91	0.8%
GREENLEE	2	0	1	1	4	<0.1%
LA PAZ	1	0	3	1	5	<0.1%
MARICOPA	1,061	1,430	3,473	1,676	7,640	62.9%
MOHAVE	51	80	142	46	319	2.6%
NAVAJO	7	7	7	6	27	0.2%
PIMA	248	339	897	431	1,915	15.7%
PINAL	130	173	455	219	977	8.1%
SANTA CRUZ	10	12	46	57	125	1.0%
YAVAPAI	57	77	188	90	412	3.4%
YUMA	9	19	34	20	82	0.7%
STATEWIDE	1,666	2,294	5,512	2,665	12,137	100.0%
% OF TOTAL	13.7%	18.9%	45.4%	22.0%	100.0%	

TABLE 12
NUMBER OF REPORTS BY PRIORITY AND COUNTY FOR REPORTS OPEN FOR INVESTIGATION FOR PERIOD OF APRIL 1, 2014 THROUGH SEPTEMBER 30, 2014

COUNTY	PRIORITY 1	PRIORITY 2	PRIORITY 3	PRIORITY 4	TOTAL	% OF TOTAL
APACHE	21	35	76	17	149	2.3%
COCHISE	0	0	0	0	0	0.0%
COCONINO	1	3	3	2	9	0.1%
GILA	26	34	35	10	105	1.6%
GRAHAM	1	3	7	5	16	0.3%
GREENLEE	1	1	5	0	7	0.1%
LA PAZ	0	0	0	0	0	0.0%
MARICOPA	572	847	1,865	930	4,214	65.7%
MOHAVE	20	10	36	10	76	1.2%
NAVAJO	0	0	0	0	0	0.0%
PIMA	116	193	483	220	1,012	15.8%
PINAL	84	106	246	105	541	8.4%
SANTA CRUZ	8	15	37	19	79	1.2%
YAVAPAI	29	33	82	30	174	2.7%
YUMA	7	8	17	6	38	0.6%
STATEWIDE	886	1,288	2,892	1,354	6,420	100.0%
% OF TOTAL	13.8%	20.1%	45.0%	21.1%	100.0%	

CHART 9
NUMBER OF REPORTS ASSIGNED FOR INVESTIGATION BY TYPE OF MALTREATMENT FOR REPORTS OPEN FOR INVESTIGATION



The number of reports assigned for investigation for reports open for investigation will change each reporting period as investigations are completed and closed by next reporting period.

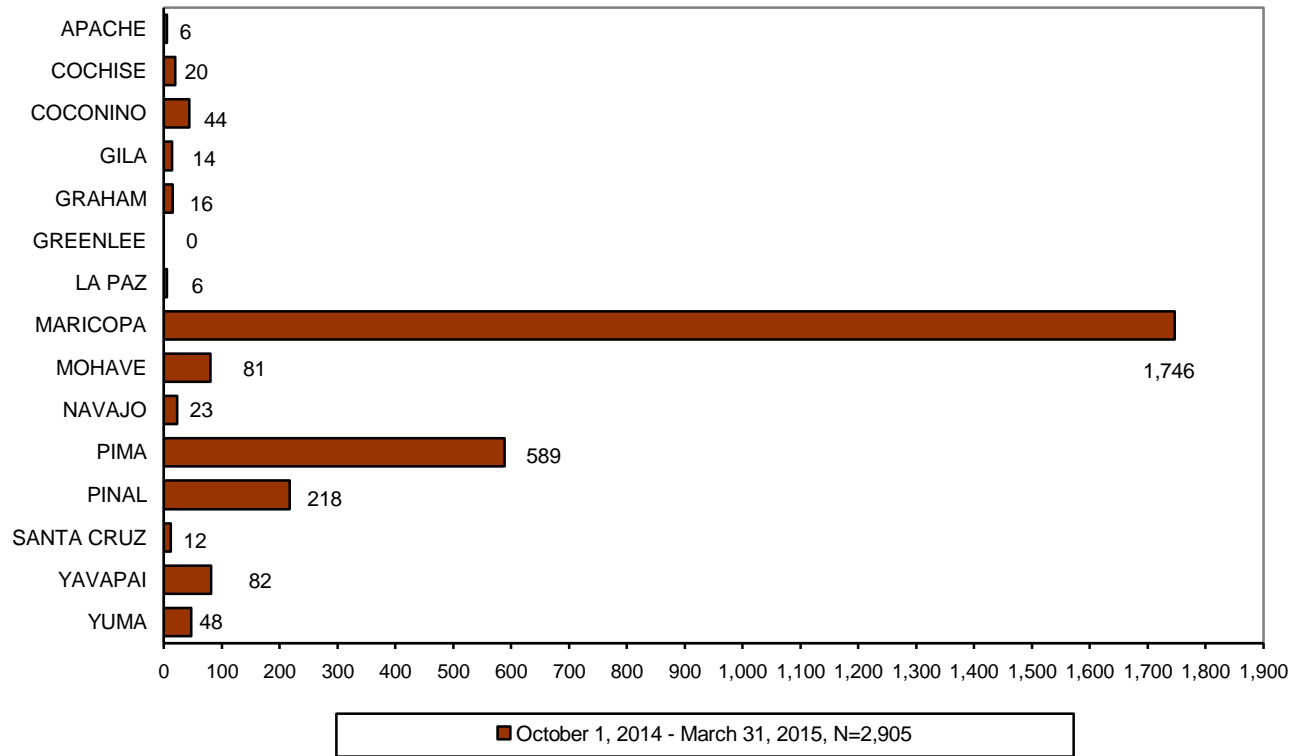
TABLE 13
NUMBER OF REPORTS BY TYPE OF MALTREATMENT AND COUNTY FOR REPORTS
OPEN FOR INVESTIGATION FOR PERIOD OF
OCTOBER 1, 2014 THROUGH MARCH 31, 2015

COUNTY	EMOTIONAL ABUSE	NEGLECT	PHYSICAL ABUSE	SEXUAL ABUSE	TOTAL	% OF TOTAL
APACHE	1	5	1	0	7	0.1%
COCHISE	1	174	65	10	250	2.1%
COCONINO	2	99	33	6	140	1.2%
GILA	1	107	29	6	143	1.2%
GRAHAM	1	65	19	6	91	0.8%
GREENLEE	0	2	2	0	4	<0.1%
LA PAZ	0	5	0	0	5	<0.1%
MARICOPA	42	5,230	2,073	295	7,640	62.9%
MOHAVE	3	232	74	10	319	2.6%
NAVAJO	0	21	6	0	27	0.2%
PIMA	11	1,352	473	79	1,915	15.7%
PINAL	5	686	258	28	977	8.1%
SANTA CRUZ	0	77	42	6	125	1.0%
YAVAPAI	0	305	95	12	412	3.4%
YUMA	1	54	25	2	82	0.7%
STATEWIDE	68	8,414	3,195	460	12,137	100.0%
% OF TOTAL	0.6%	69.3%	26.3%	3.8%	100.0%	

TABLE 14
NUMBER OF REPORTS BY TYPE OF MALTREATMENT AND COUNTY FOR REPORTS
OPEN FOR INVESTIGATION FOR PERIOD OF
APRIL 1, 2014 THROUGH SEPTEMBER 30, 2014

COUNTY	EMOTIONAL ABUSE	NEGLECT	PHYSICAL ABUSE	SEXUAL ABUSE	TOTAL	% OF TOTAL
APACHE	0	0	0	0	0	2.3%
COCHISE	1	101	44	3	149	0.0%
COCONINO	0	7	1	1	9	0.1%
GILA	1	79	22	3	105	1.6%
GRAHAM	0	12	2	2	16	0.3%
GREENLEE	0	4	3	0	7	0.1%
LA PAZ	0	0	0	0	0	0.0%
MARICOPA	22	2,849	1,146	197	4,214	65.7%
MOHAVE	0	56	14	6	76	1.2%
NAVAJO	0	0	0	0	0	0.0%
PIMA	4	742	228	38	1,012	15.8%
PINAL	10	377	137	17	541	8.4%
SANTA CRUZ	0	53	23	3	79	1.2%
YAVAPAI	1	119	46	8	174	2.7%
YUMA	0	27	9	2	38	0.6%
STATEWIDE	39	4,426	1,675	280	6,420	100.0%
% OF TOTAL	0.6%	68.9%	26.1%	4.4%	100.0%	

**CHART 10
NUMBER OF REPORTS ASSIGNED FOR INVESTIGATION WHERE A REMOVAL OCCURRED**



**TABLE 15
NUMBER OF REPORTS ASSIGNED FOR INVESTIGATION BY COUNTY WHERE A REMOVAL OCCURRED FOR THE PERIOD OCTOBER 1, 2014 THROUGH MARCH 31, 2015**

COUNTY	NUMBER OF REPORTS ASSIGNED	NUMBER OF REPORTS ASSIGNED WITH A REMOVAL	% OF REPORTS WHERE A CHILD REMOVED
APACHE	57	6	10.5%
COCHISE	399	20	5.0%
COCONINO	448	44	9.8%
GILA	168	14	8.3%
GRAHAM	174	16	9.2%
GREENLEE	10	0	0.0%
LA PAZ	56	6	10.7%
MARICOPA	15,144	1,746	11.5%
MOHAVE	755	81	10.7%
NAVAJO	326	23	7.1%
PIMA	4,661	589	12.6%
PINAL	1,627	218	13.4%
SANTA CRUZ	149	12	8.1%
YAVAPAI	715	82	11.5%
YUMA	493	48	9.7%
STATEWIDE	25,182	2,905	11.5%

TABLE 16
NUMBER OF REPORTS ASSIGNED FOR INVESTIGATION BY COUNTY WHERE A
REMOVAL OCCURRED FOR THE PERIOD APRIL 1, 2014 THROUGH SEPTEMBER 30, 2014

COUNTY	NUMBER OF REPORTS ASSIGNED	NUMBER OF REPORTS ASSIGNED WITH A REMOVAL	% OF REPORTS WHERE A CHILD WAS REMOVED
APACHE	74	15	20.3%
COCHISE	426	43	10.1%
COCONINO	368	24	6.5%
GILA	222	24	10.8%
GRAHAM	161	12	7.5%
GREENLEE	34	0	0.0%
LA PAZ	62	9	14.5%
MARICOPA	14,640	1,802	12.3%
MOHAVE	781	116	14.9%
NAVAJO	344	33	9.6%
PIMA	4,555	608	13.3%
PINAL	1,706	206	12.1%
SANTA CRUZ	126	14	11.1%
YAVAPAI	704	92	13.1%
YUMA	534	51	9.6%
STATEWIDE	24,737	3,049	12.3%

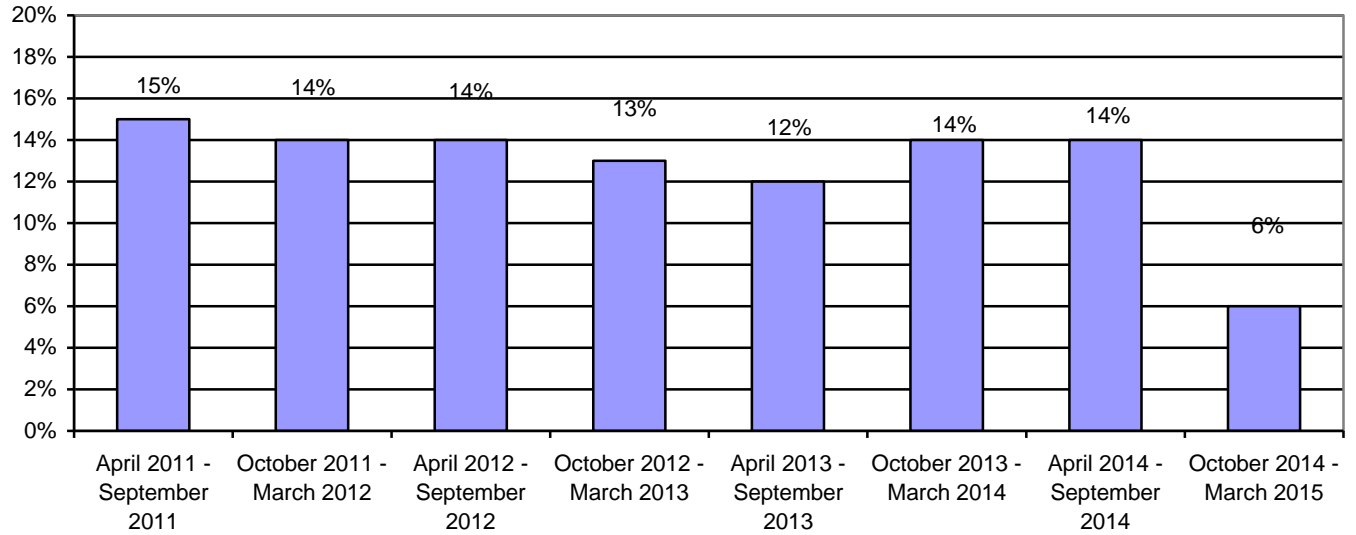
COMPLETED INVESTIGATIONS

Substantiated reports are reports where the Department has determined that at least one of the allegations in the report of abuse and/or neglect is true. The number of reports that are considered substantiated are a subset of the total number of reports that were received, investigated, and closed during the reporting period.

The preliminary number of reports that are substantiated for the current reporting period is 1,606. For the prior reporting period, the number of reports that were assigned for investigation that resulted in substantiated findings was revised from 1,739 to 3,456. This number will change each reporting period as a result of subsequent decisions based on parents' rights to due process as well as the completion of investigations and findings.

- The preliminary substantiation rate for the current reporting period is 6%. However, the substantiation rate for the current period is anticipated to be revised upwards in the next semi-annual report.
- The substantiation rate for the prior reporting period is 14%. However, when initially reported, the April 2014 – September 2014 substantiation rate was 7%.

**CHART 11
SUBSTANTIATION RATE BY REPORTING
PERIOD**



Information on both proposed substantiations and finalized substantiations is provided in the charts and tables below:

- For information on the proposed substantiated investigation findings—classified by priority—for the current and prior reporting period, see Chart 12, Table 17, and Table 18.
- For information on the proposed substantiated investigation findings—classified by type of maltreatment—for the current and prior reporting period, see Chart 13, Table 19, and Table 20.
- For information on the substantiated investigation findings—classified by priority—for the current and prior reporting period, see Chart 14, Table 21, and Table 22.
- For information on the substantiated investigation findings—classified by type of maltreatment—for the current and prior reporting period, see Chart 15, Table 23, and Table 24.

CHART 12
NUMBER OF REPORTS ASSIGNED FOR INVESTIGATION BY PRIORITY AND REPORTING PERIOD THAT RESULTED IN PROPOSED SUBSTANTIATION

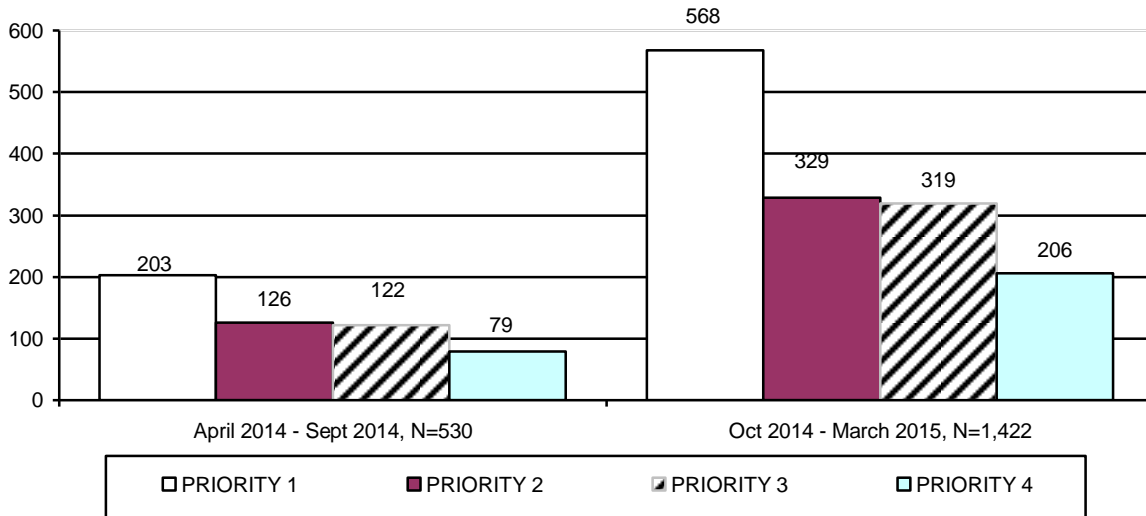


TABLE 17
NUMBER OF REPORTS ASSIGNED FOR INVESTIGATION BY PRIORITY AND COUNTY THAT RESULTED IN PROPOSED SUBSTANTIATION FOR PERIOD OF OCTOBER 1, 2014 THROUGH MARCH 31, 2015

COUNTY	PRIORITY 1	PRIORITY 2	PRIORITY 3	PRIORITY 4	TOTAL	% OF TOTAL
APACHE	1	0	0	0	1	0.1%
COCHISE	9	2	3	0	14	1.0%
COCONINO	11	3	7	1	22	1.6%
GILA	0	0	0	0	0	0.0%
GRAHAM	1	0	3	2	6	0.4%
GREENLEE	0	0	0	0	0	0.0%
LA PAZ	1	0	2	1	4	0.3%
MARICOPA	368	206	212	166	952	66.9%
MOHAVE	23	16	11	1	51	3.6%
NAVAJO	7	2	4	2	15	1.1%
PIMA	100	76	43	14	233	16.3%
PINAL	23	15	17	14	69	4.9%
SANTA CRUZ	2	2	0	2	6	0.4%
YAVAPAI	18	6	13	3	40	2.8%
YUMA	4	1	4	0	9	0.6%
STATEWIDE	568	329	319	206	1,422	100.0%
% OF TOTAL	40.0%	23.1%	22.4%	14.5%	100.0%	

TABLE 18
NUMBER OF REPORTS ASSIGNED FOR INVESTIGATION BY PRIORITY AND COUNTY
THAT RESULTED IN PROPOSED SUBSTANTIATION FOR PERIOD OF
APRIL 1, 2014 THROUGH SEPTEMBER 30, 2014

COUNTY	PRIORITY 1	PRIORITY 2	PRIORITY 3	PRIORITY 4	TOTAL	% OF TOTAL
APACHE	0	0	1	0	1	0.2%
COCHISE	0	2	1	0	3	0.6%
COCONINO	2	0	0	0	2	0.4%
GILA	4	2	1	0	7	1.3%
GRAHAM	0	0	1	0	1	0.2%
GREENLEE	0	0	0	0	0	0.0%
LA PAZ	0	1	1	0	2	0.4%
MARICOPA	164	101	90	69	424	79.9%
MOHAVE	15	0	6	3	24	4.5%
NAVAJO	0	2	1	0	3	0.6%
PIMA	10	9	8	2	29	5.5%
PINAL	2	5	5	3	15	2.8%
SANTA CRUZ	0	0	0	0	0	0.0%
YAVAPAI	5	2	6	2	15	2.8%
YUMA	1	2	1	0	4	0.8%
STATEWIDE	203	126	122	79	530	100.0%
% OF TOTAL	38.3%	23.8%	23.0%	14.9%	100.0%	

CHART 13
NUMBER OF REPORTS ASSIGNED FOR INVESTIGATION BY TYPE OF MALTREATMENT
THAT RESULTED IN PROPOSED SUBSTANTIATION

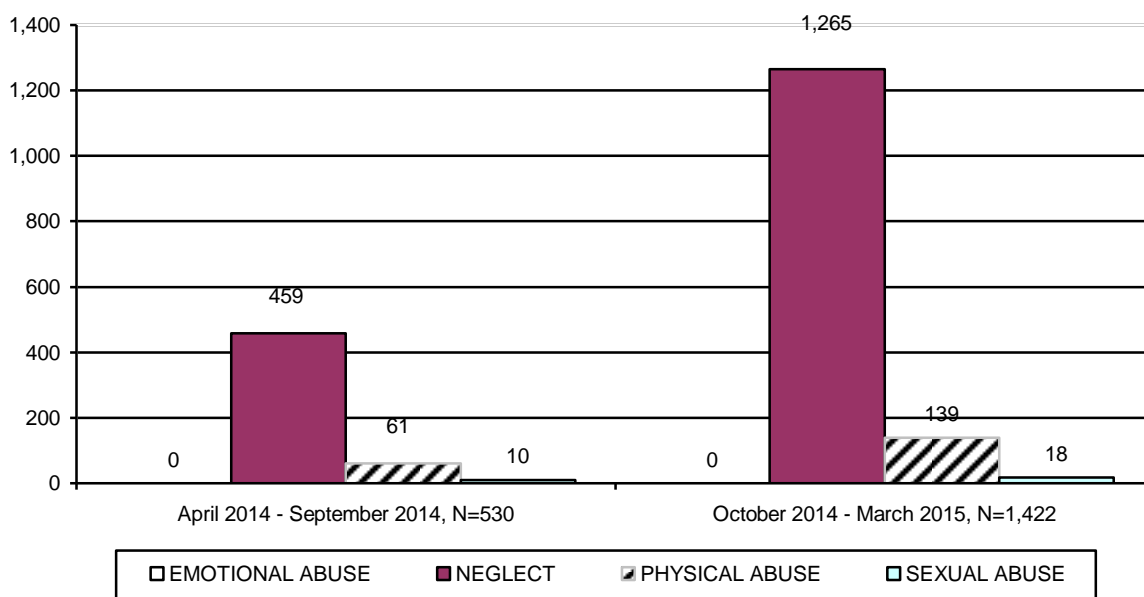


TABLE 19
NUMBER OF REPORTS ASSIGNED FOR INVESTIGATION BY TYPE OF MALTREATMENT
BY COUNTY THAT RESULTED IN PROPOSED SUBSTANTIATION FOR PERIOD OF
OCTOBER 1, 2014 THROUGH MARCH 31, 2015

COUNTY	EMOTIONAL ABUSE	NEGLECT	PHYSICAL ABUSE	SEXUAL ABUSE	TOTAL	% OF TOTAL
APACHE	0	0	0	1	1	0.1%
COCHISE	0	14	0	0	14	1.0%
COCONINO	0	19	2	1	22	1.6%
GILA	0	0	0	0	0	0.0%
GRAHAM	0	4	1	1	6	0.4%
GREENLEE	0	0	0	0	0	0.0%
LA PAZ	0	4	0	0	4	0.3%
MARICOPA	0	840	98	14	952	66.9%
MOHAVE	0	44	7	0	51	3.6%
NAVAJO	0	13	2	0	15	1.1%
PIMA	0	217	15	1	233	16.3%
PINAL	0	61	8	0	69	4.9%
SANTA CRUZ	0	6	0	0	6	0.4%
YAVAPAI	0	36	4	0	40	2.8%
YUMA	0	7	2	0	9	0.6%
STATEWIDE	0	1,265	139	18	1,422	100.0%
% OF TOTAL	0.0%	88.9%	9.8%	1.3%	100.0%	

TABLE 20
NUMBER OF REPORTS ASSIGNED FOR INVESTIGATION BY TYPE OF MALTREATMENT
BY COUNTY THAT RESULTED IN PROPOSED SUBSTANTIATION FOR PERIOD OF
APRIL 1, 2014 THROUGH SEPTEMBER 30, 2014

COUNTY	EMOTIONAL ABUSE	NEGLECT	PHYSICAL ABUSE	SEXUAL ABUSE	TOTAL	% OF TOTAL
APACHE	0	1	0	0	1	0.2%
COCHISE	0	3	0	0	3	0.6%
COCONINO	0	1	1	0	2	0.4%
GILA	0	7	0	0	7	1.3%
GRAHAM	0	0	1	0	1	0.2%
GREENLEE	0	0	0	0	0	0.0%
LA PAZ	0	2	0	0	2	0.4%
MARICOPA	0	363	51	10	424	79.9%
MOHAVE	0	19	5	0	24	4.5%
NAVAJO	0	2	1	0	3	0.6%
PIMA	0	29	0	0	29	5.5%
PINAL	0	14	1	0	15	2.8%
SANTA CRUZ	0	0	0	0	0	0.0%
YAVAPAI	0	15	0	0	15	2.8%
YUMA	0	3	1	0	4	0.8%
STATEWIDE	0	459	61	10	530	100.0%
% OF TOTAL	0.0%	86.6%	11.5%	1.9%	100.0%	

CHART 14
NUMBER OF REPORTS ASSIGNED FOR INVESTIGATION BY PRIORITY AND REPORTING PERIOD THAT RESULTED IN SUBSTANTIATION

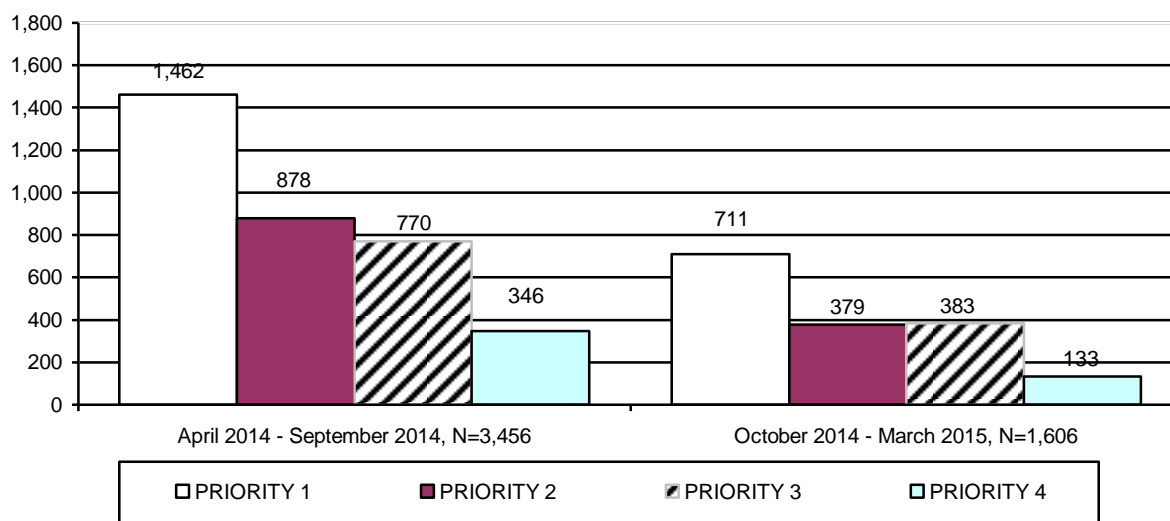


TABLE 21
NUMBER OF REPORTS ASSIGNED FOR INVESTIGATION BY PRIORITY AND COUNTY THAT RESULTED IN SUBSTANTIATION FOR PERIOD OF OCTOBER 1, 2014 THROUGH MARCH 31, 2015

COUNTY	PRIORITY 1	PRIORITY 2	PRIORITY 3	PRIORITY 4	TOTAL	% OF TOTAL
APACHE	1	2	2	0	5	0.3%
COCHISE	4	4	3	1	12	0.8%
COCONINO	10	6	6	0	22	1.4%
GILA	4	2	0	0	6	0.4%
GRAHAM	8	6	1	0	15	0.9%
GREENLEE	0	0	0	0	0	0.0%
LA PAZ	6	1	0	0	7	0.4%
MARICOPA	463	213	222	90	988	61.5%
MOHAVE	18	12	6	3	39	2.4%
NAVAJO	8	9	7	2	26	1.6%
PIMA	96	67	84	21	268	16.7%
PINAL	47	35	27	13	122	7.6%
SANTA CRUZ	3	0	1	0	4	0.3%
YAVAPAI	12	4	8	0	24	1.5%
YUMA	31	18	16	3	68	4.2%
STATEWIDE	711	379	383	133	1,606	100.0%
% OF TOTAL	44.2%	23.6%	23.9%	8.3%	100.0%	

TABLE 22
NUMBER OF REPORTS ASSIGNED FOR INVESTIGATION BY PRIORITY AND COUNTY
THAT RESULTED IN SUBSTANTIATION FOR PERIOD OF
APRIL 1, 2014 THROUGH SEPTEMBER 30, 2014

COUNTY	PRIORITY 1	PRIORITY 2	PRIORITY 3	PRIORITY 4	TOTAL	% OF TOTAL
APACHE	6	7	5	0	18	0.5%
COCHISE	26	17	13	2	58	1.7%
COCONINO	20	15	14	3	52	1.5%
GILA	20	6	0	0	26	0.8%
GRAHAM	13	2	3	0	18	0.5%
GREENLEE	1	0	1	0	2	0.1%
LA PAZ	3	6	3	0	12	0.4%
MARICOPA	799	473	453	260	1,985	57.3%
MOHAVE	71	23	23	9	126	3.7%
NAVAJO	24	10	18	3	55	1.6%
PIMA	298	210	153	32	693	20.0%
PINAL	95	63	36	23	217	6.3%
SANTA CRUZ	11	2	1	0	14	0.4%
YAVAPAI	24	25	31	9	89	2.6%
YUMA	51	19	16	5	91	2.6%
STATEWIDE	1,462	878	770	346	3,456	100.0%
% OF TOTAL	42.3%	25.4%	22.3%	10.0%	100.0%	

CHART 15
NUMBER OF REPORTS ASSIGNED FOR INVESTIGATION BY TYPE OF MALTREATMENT
THAT RESULTED IN SUBSTANTIATION

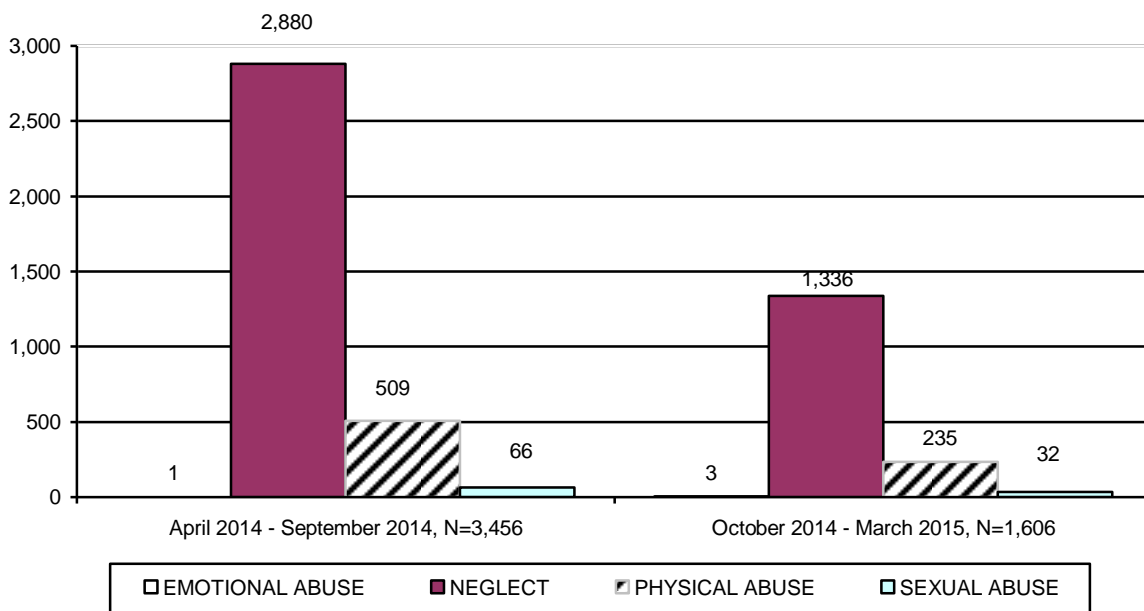


TABLE 23
NUMBER OF REPORTS ASSIGNED FOR INVESTIGATION BY TYPE OF MALTREATMENT
BY COUNTY THAT RESULTED IN SUBSTANTIATION FOR PERIOD OF
OCTOBER 1, 2014 THROUGH MARCH 31, 2015

COUNTY	EMOTIONAL ABUSE	NEGLECT	PHYSICAL ABUSE	SEXUAL ABUSE	TOTAL	% OF TOTAL
APACHE	0	3	2	0	5	0.3%
COCHISE	0	11	1	0	12	0.8%
COCONINO	0	17	4	1	22	1.4%
GILA	0	6	0	0	6	0.4%
GRAHAM	0	12	3	0	15	0.9%
GREENLEE	0	0	0	0	0	0.0%
LA PAZ	0	6	0	1	7	0.4%
MARICOPA	2	818	147	21	988	61.5%
MOHAVE	0	33	6	0	39	2.4%
NAVAJO	0	24	2	0	26	1.6%
PIMA	1	229	33	5	268	16.7%
PINAL	0	98	23	1	122	7.6%
SANTA CRUZ	0	4	0	0	4	0.3%
YAVAPAI	0	17	6	1	24	1.5%
YUMA	0	58	8	2	68	4.2%
STATEWIDE	3	1,336	235	32	1,606	100.0%
% OF TOTAL	0.2%	83.2%	14.6%	2.0%	100.0%	

TABLE 24
NUMBER OF REPORTS ASSIGNED FOR INVESTIGATION BY TYPE OF MALTREATMENT
BY COUNTY THAT RESULTED IN SUBSTANTIATION FOR PERIOD OF
APRIL 1, 2014 THROUGH SEPTEMBER 30, 2014

COUNTY	EMOTIONAL ABUSE	NEGLECT	PHYSICAL ABUSE	SEXUAL ABUSE	TOTAL	% OF TOTAL
APACHE	0	12	4	2	18	0.5%
COCHISE	0	49	8	1	58	1.7%
COCONINO	0	35	16	1	52	1.5%
GILA	0	23	3	0	26	0.8%
GRAHAM	0	15	3	0	18	0.5%
GREENLEE	0	2	0	0	2	0.1%
LA PAZ	0	9	2	1	12	0.4%
MARICOPA	0	1,645	294	46	1,985	57.3%
MOHAVE	0	110	15	1	126	3.7%
NAVAJO	0	47	8	0	55	1.6%
PIMA	0	581	105	7	693	20.0%
PINAL	1	187	24	5	217	6.3%
SANTA CRUZ	0	14	0	0	14	0.4%
YAVAPAI	0	75	14	0	89	2.6%
YUMA	0	76	13	2	91	2.6%
STATEWIDE	1	2,880	509	66	3,456	100.0%
% OF TOTAL	<0.1%	83.4%	14.7%	1.9%	100.0%	

The preliminary number of investigations that resulted in an unsubstantiated finding for this reporting period was 10,017. Charts 16 and 17 display information on unsubstantiated reports classified by priority and type of maltreatment for the current and prior reporting periods. Tables 25 and 26 provide information on the unsubstantiated investigation findings classified by priority for each county in the current and prior reporting periods. Tables 27 and 28 provide information on the unsubstantiated investigation findings classified by type of maltreatment for each county in the current and prior reporting periods. These figures will change over time as investigations are completed and findings are entered.

CHART 16
NUMBER OF REPORTS ASSIGNED FOR INVESTIGATION BY PRIORITY AND REPORTING PERIOD THAT RESULTED IN UNSUBSTANTIATION

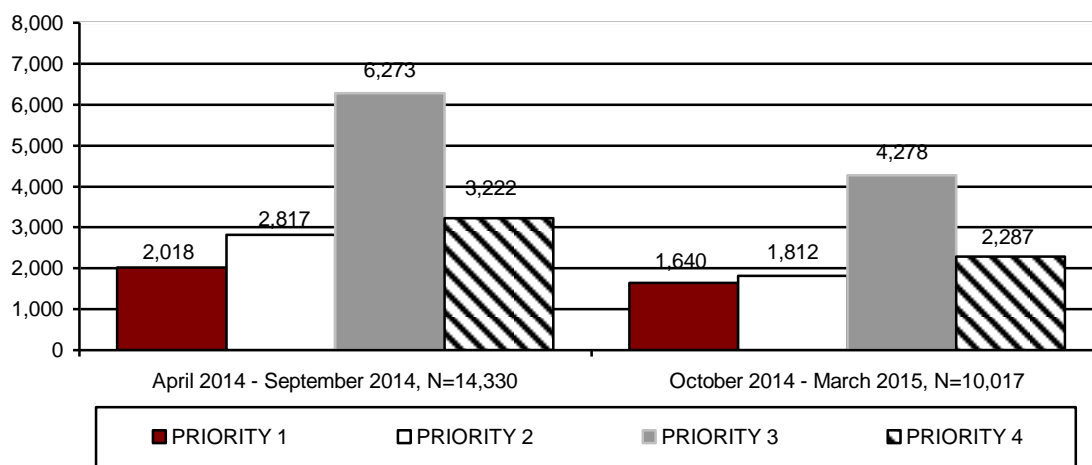


TABLE 25
NUMBER OF REPORTS ASSIGNED FOR INVESTIGATION BY PRIORITY AND COUNTY THAT RESULTED IN UNSUBSTANTIATION FOR PERIOD OF OCTOBER 1, 2014 THROUGH MARCH 31, 2015

COUNTY	PRIORITY 1	PRIORITY 2	PRIORITY 3	PRIORITY 4	TOTAL	% OF TOTAL
APACHE	7	6	19	12	44	0.4%
COCHISE	23	32	50	18	123	1.2%
COCONINO	41	34	135	54	264	2.6%
GILA	0	11	5	3	19	0.2%
GRAHAM	9	12	24	17	62	0.6%
GREENLEE	1	0	3	2	6	0.1%
LA PAZ	9	6	13	12	40	0.4%
MARICOPA	978	1,015	2,271	1,300	5,564	55.6%
MOHAVE	50	65	149	82	346	3.5%
NAVAJO	35	56	99	68	258	2.6%
PIMA	327	380	1,064	474	2,245	22.4%
PINAL	94	88	173	104	459	4.6%
SANTA CRUZ	2	2	5	5	14	0.1%
YAVAPAI	25	39	107	68	239	2.4%
YUMA	39	66	161	68	334	3.3%
STATEWIDE	1,640	1,812	4,278	2,287	10,017	100.0%
% OF TOTAL	16.4%	18.1%	42.7%	22.8%	100.0%	

TABLE 26
NUMBER OF REPORTS ASSIGNED FOR INVESTIGATION BY PRIORITY AND COUNTY
THAT RESULTED IN UNSUBSTANTIATION FOR PERIOD OF
APRIL 1, 2014 THROUGH SEPTEMBER 30, 2014

COUNTY	PRIORITY 1	PRIORITY 2	PRIORITY 3	PRIORITY 4	TOTAL	% OF TOTAL
APACHE	6	14	21	14	55	0.4%
COCHISE	39	51	91	38	219	1.5%
COCONINO	32	54	142	77	305	2.1%
GILA	7	25	34	18	84	0.6%
GRAHAM	11	34	54	26	125	0.9%
GREENLEE	1	11	10	3	25	0.2%
LA PAZ	4	9	23	12	48	0.3%
MARICOPA	1,264	1,551	3,468	1,816	8,099	56.5%
MOHAVE	81	120	245	111	557	3.9%
NAVAJO	35	64	131	57	287	2.0%
PIMA	319	547	1,318	637	2,821	19.7%
PINAL	126	170	355	196	847	5.9%
SANTA CRUZ	3	7	12	11	33	0.2%
YAVAPAI	42	69	202	111	424	3.0%
YUMA	48	91	167	95	401	2.8%
STATEWIDE	2,018	2,817	6,273	3,222	14,330	100.0%
% OF TOTAL	14.1%	19.7%	43.7%	22.5%	100.0%	

CHART 17
NUMBER OF REPORTS ASSIGNED FOR INVESTIGATION BY TYPE OF MALTREATMENT
THAT RESULTED IN UNSUBSTANTIATION BY REPORTING PERIOD

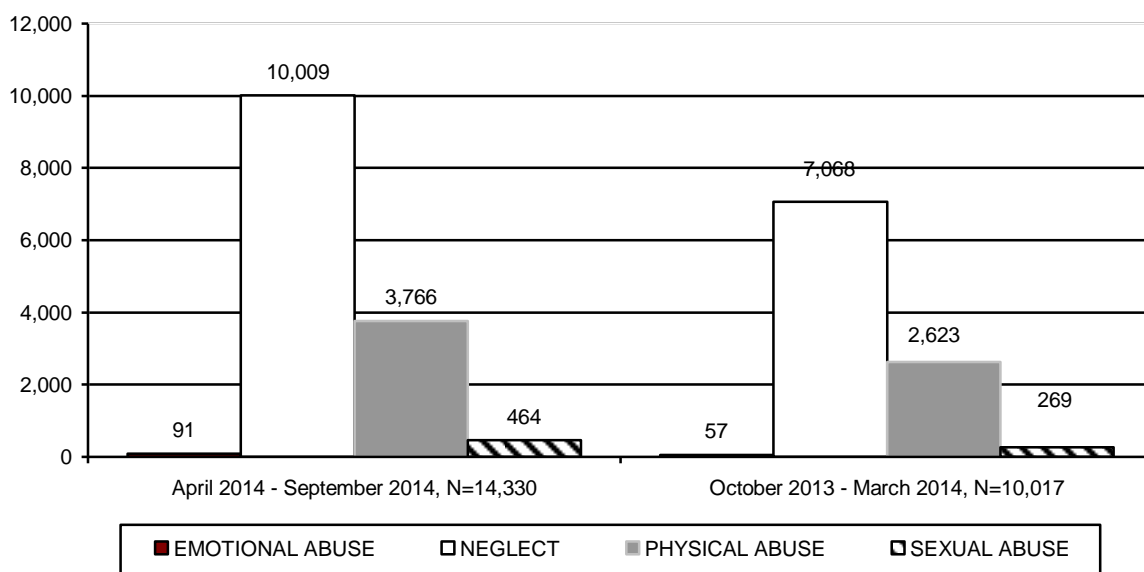


TABLE 27
NUMBER OF REPORTS ASSIGNED FOR INVESTIGATION BY TYPE OF MALTREATMENT
BY COUNTY THAT RESULTED IN UNSUBSTANTIATION FOR PERIOD OF
OCTOBER 1, 2014 THROUGH MARCH 31, 2015

COUNTY	EMOTIONAL ABUSE	NEGLECT	PHYSICAL ABUSE	SEXUAL ABUSE	TOTAL	% OF TOTAL
APACHE	0	27	16	1	44	0.4%
COCHISE	0	86	29	8	123	1.2%
COCONINO	1	156	90	17	264	2.6%
GILA	0	15	4	0	19	0.2%
GRAHAM	0	45	16	1	62	0.6%
GREENLEE	0	5	1	0	6	0.1%
LA PAZ	0	35	4	1	40	0.4%
MARICOPA	33	3,862	1,517	152	5,564	55.6%
MOHAVE	1	254	83	8	346	3.5%
NAVAJO	1	187	65	5	258	2.6%
PIMA	14	1,639	558	34	2,245	22.4%
PINAL	4	333	102	20	459	4.6%
SANTA CRUZ	0	11	1	2	14	0.1%
YAVAPAI	0	168	63	8	239	2.4%
YUMA	3	245	74	12	334	3.3%
STATEWIDE	57	7,068	2,623	269	10,017	100.0%
% OF TOTAL	0.6%	70.5%	26.2%	2.7%	100.0%	

TABLE 28
NUMBER OF REPORTS ASSIGNED FOR INVESTIGATION BY TYPE OF MALTREATMENT
BY COUNTY THAT RESULTED IN UNSUBSTANTIATION FOR PERIOD OF
APRIL 1, 2014 THROUGH SEPTEMBER 30, 2014

COUNTY	EMOTIONAL ABUSE	NEGLECT	PHYSICAL ABUSE	SEXUAL ABUSE	TOTAL	% OF TOTAL
APACHE	1	43	11	0	55	0.4%
COCHISE	2	161	48	8	219	1.5%
COCONINO	0	223	69	13	305	2.1%
GILA	1	65	15	3	84	0.6%
GRAHAM	1	89	32	3	125	0.9%
GREENLEE	0	19	5	1	25	0.2%
LA PAZ	0	31	16	1	48	0.3%
MARICOPA	57	5,569	2,216	257	8,099	56.5%
MOHAVE	4	399	136	18	557	3.9%
NAVAJO	2	205	68	12	287	2.0%
PIMA	12	2,004	719	86	2,821	19.7%
PINAL	5	595	224	23	847	5.9%
SANTA CRUZ	1	24	7	1	33	0.2%
YAVAPAI	3	300	105	16	424	3.0%
YUMA	2	282	95	22	401	2.8%
STATEWIDE	91	10,009	3,766	464	14,330	100.0%
% OF TOTAL	0.6%	69.9%	26.3%	3.2%	100.0%	

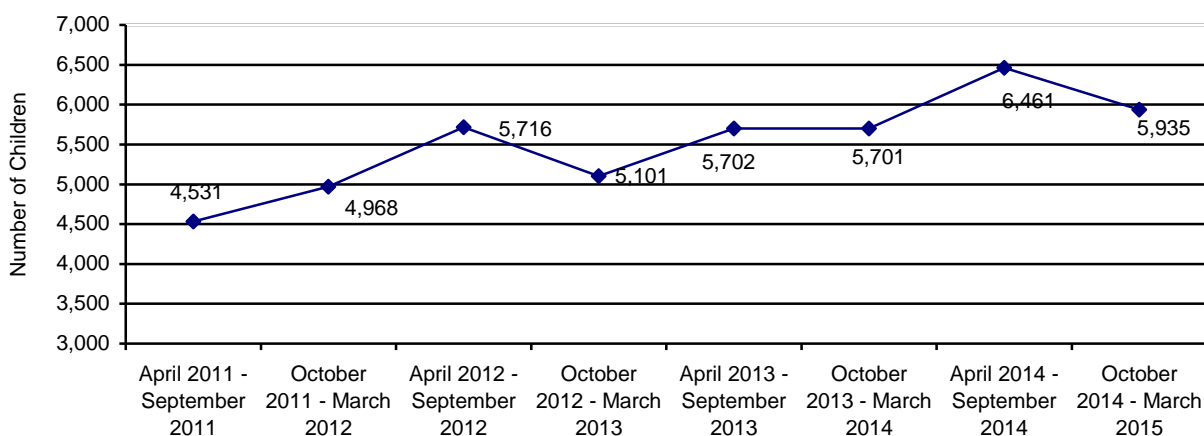
SAFE HAVEN INFANTS

Communications from providers indicate that there were two newborn infants delivered to Safe Haven providers during the October 2014 – March 2015 reporting period. This compares to six infants being delivered to Safe Haven providers during the prior reporting period.

CHILDREN ENTERING OUT-OF-HOME CARE

During the current reporting period, 5,935 children entered care, which represents an 8.1% decrease in children entering care over the prior reporting period and a 4.1% increase over the same reporting period last year. This increase in the number of children entering care is not unexpected, however, as the number of reports of abuse and neglect increased by 10.2%. Chart 18 displays children entering out-of-home care by reporting period. As can be seen from the chart below, the increase in children entering out-of-home care has continued since FY 2011. Since that time, the number of children entering out-of-home care has remained high, which is a reflection of the growth in the number of reports received by the Hotline (see Chart 1 for number of reports detail). However, there was a decrease in the number of children entering out-of-home care by reporting period for the first time since March 2013.

**CHART 18
TOTAL CHILDREN ENTERING OUT-OF-HOME CARE BY REPORTING PERIOD**



CHILDREN ENTERING OUT-OF-HOME CARE – VOLUNTARY SERVICES

The number of children entering out-of-home placement through voluntary foster care agreements for the current reporting period was 131, which represents 2.2% of the children entering care this reporting period. Information on the county level distribution of voluntary placements into out-of-home care can be found in Table 29 for the current reporting period and in Table 30 for the prior reporting period.

Voluntary foster care may be provided when the parents or legal guardians of a child have requested such assistance and have signed a legally binding written agreement for the temporary placement of the child in foster care while risk factors are addressed to enable the child to live safely at home. A.R.S. § 8-806 authorizes the Department to provide voluntary foster care placement for children for a period not to exceed 90 days and no more than twice within 24 consecutive months.

TABLE 29
NUMBER OF CHILDREN ENTERING OUT-OF-HOME CARE BY COUNTY WHO ARE
VOLUNTARY PLACEMENTS FOR CHILDREN UNDER THE AGE OF EIGHTEEN FOR THE
PERIOD OF OCTOBER 1, 2014 THROUGH MARCH 31, 2015

COUNTY	NUMBER OF CHILDREN REMOVED	% OF TOTAL REMOVALS	NUMBER OF CHILDREN ENTERING OUT-OF-HOME CARE UNDER THE AGE OF EIGHTEEN WHO ARE VOLUNTARY PLACEMENTS	% OF CHILDREN ENTERING OUT-OF-HOME CARE WHO ARE VOLUNTARY PLACEMENTS
APACHE	12	0.2%	0	0.0%
COCHISE	50	0.8%	0	0.0%
COCONINO	66	1.1%	7	5.3%
GILA	38	0.6%	2	1.5%
GRAHAM	29	0.5%	0	0.0%
GREENLEE	0	0.0%	0	0.0%
LA PAZ	20	0.3%	0	0.0%
MARICOPA	3,682	62.1%	50	38.2%
MOHAVE	166	2.8%	0	0.0%
NAVAJO	52	0.9%	1	0.8%
PIMA	1,105	18.7%	51	38.9%
PINAL	441	7.4%	3	2.3%
SANTA CRUZ	14	0.2%	0	0.0%
YAVAPAI	152	2.6%	11	8.4%
YUMA	108	1.8%	6	4.6%
STATEWIDE	5,935	100.0%	131	100.0%

TABLE 30
NUMBER OF CHILDREN ENTERING OUT-OF-HOME CARE BY COUNTY WHO ARE
VOLUNTARY PLACEMENTS FOR CHILDREN UNDER THE AGE OF EIGHTEEN FOR THE
PERIOD OF APRIL 1, 2014 THROUGH SEPTEMBER 30, 2014

COUNTY	NUMBER OF CHILDREN REMOVED	% OF TOTAL REMOVALS	NUMBER OF CHILDREN ENTERING OUT-OF-HOME CARE UNDER THE AGE OF EIGHTEEN WHO ARE VOLUNTARY PLACEMENTS	% OF CHILDREN ENTERING OUT-OF-HOME CARE WHO ARE VOLUNTARY PLACEMENTS
APACHE	23	0.4%	1	0.5%
COCHISE	90	1.4%	5	2.7%
COCONINO	41	0.6%	14	7.4%
GILA	44	0.7%	0	0.0%
GRAHAM	31	0.5%	2	1.1%
GREENLEE	3	0.1%	0	0.0%
LA PAZ	16	0.3%	0	0.0%
MARICOPA	3,928	60.7%	58	30.7%
MOHAVE	227	3.5%	3	1.6%
NAVAJO	44	0.7%	3	1.6%
PIMA	1,202	18.6%	67	35.4%
PINAL	454	7.0%	1	0.5%
SANTA CRUZ	40	0.6%	0	0.0%
YAVAPAI	200	3.1%	29	15.3%
YUMA	118	1.8%	6	3.2%
STATEWIDE	6,461	100.0%	189	100.0%

NUMBER OF CHILDREN ENTERING OUT-OF-HOME CARE

The total number of children entering out-of-home care (of which voluntary placements are a subset) in the current reporting period was 5,935, which represents a decrease of 8.1% in the total number of children entering out-of-home care from the prior reporting period. Chart 19 displays the number of removed children, and then further differentiates new removals by providing the number with a prior removal in the past 12 months and the past 12 to 24 months. Information on the county level distribution of children entering out-of-home care can be found in Table 31 for the current period and Table 32 for the prior period.

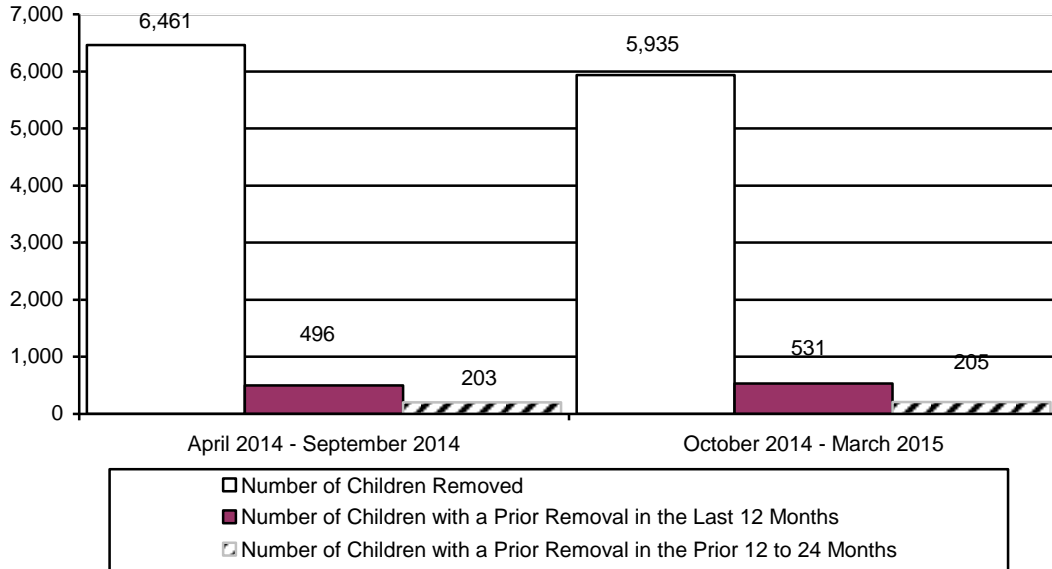
**TABLE 31
NUMBER OF CHILDREN ENTERING OUT-OF-HOME CARE BY COUNTY FOR THE
PERIOD OF OCTOBER 1, 2014 THROUGH MARCH 31, 2015**

COUNTY	NUMBER OF CHILDREN REMOVED	% OF TOTAL REMOVALS	NUMBER OF CHILDREN WITH A PRIOR REMOVAL IN THE LAST 12 MONTHS	% OF CHILDREN WITH A PRIOR REMOVAL IN THE LAST 12 MONTHS	NUMBER OF CHILDREN WITH A REMOVAL IN THE PRIOR 12 TO 24 MONTHS	% OF CHILDREN WITH A PRIOR REMOVAL IN THE PRIOR 12 TO 24 MONTHS
APACHE	12	0.2%	0	0.0%	0	0.0%
COCHISE	50	0.8%	6	12.0%	1	2.0%
COCONINO	66	1.1%	7	10.6%	0	0.0%
GILA	38	0.6%	2	5.3%	10	26.3%
GRAHAM	29	0.5%	4	13.8%	3	10.3%
GREENLEE	0	0.0%	0	0.0%	0	0.0%
LA PAZ	20	0.3%	1	5.0%	0	0.0%
MARICOPA	3,682	62.1%	303	8.2%	133	3.6%
MOHAVE	166	2.8%	25	15.1%	6	3.6%
NAVAJO	52	0.9%	2	3.8%	3	5.8%
PIMA	1,105	18.7%	120	10.9%	28	2.5%
PINAL	441	7.4%	32	7.3%	9	2.0%
SANTA CRUZ	14	0.2%	0	0.0%	0	0.0%
YAVAPAI	152	2.6%	17	11.2%	6	3.9%
YUMA	108	1.8%	12	11.1%	6	5.6%
STATEWIDE	5,935	100.0%	531	8.9%	205	3.5%

TABLE 32
NUMBER OF CHILDREN ENTERING OUT-OF-HOME CARE BY COUNTY FOR THE
PERIOD OF APRIL 1, 2014 THROUGH SEPTEMBER 30, 2014

COUNTY	NUMBER OF CHILDREN REMOVED	% OF TOTAL REMOVALS	NUMBER OF CHILDREN WITH A PRIOR REMOVAL IN THE LAST 12 MONTHS	% OF CHILDREN WITH A PRIOR REMOVAL IN THE LAST 12 MONTHS	NUMBER OF CHILDREN WITH A REMOVAL IN THE PRIOR 12 TO 24 MONTHS	% OF CHILDREN WITH A PRIOR REMOVAL IN THE PRIOR 12 TO 24 MONTHS
APACHE	23	0.4%	2	8.7%	0	0.0%
COCHISE	90	1.4%	8	8.9%	4	4.4%
COCONINO	41	0.6%	2	4.9%	0	0.0%
GILA	44	0.7%	4	9.1%	1	2.3%
GRAHAM	31	0.5%	0	0.0%	0	0.0%
GREENLEE	3	0.1%	0	0.0%	0	0.0%
LA PAZ	16	0.3%	0	0.0%	0	0.0%
MARICOPA	3,928	60.7%	292	7.4%	107	2.7%
MOHAVE	227	3.5%	14	6.2%	4	1.8%
NAVAJO	44	0.7%	9	20.5%	0	0.0%
PIMA	1,202	18.6%	115	9.6%	59	4.9%
PINAL	454	7.0%	20	4.4%	5	1.1%
SANTA CRUZ	40	0.6%	1	2.5%	0	0.0%
YAVAPAI	200	3.1%	21	10.5%	20	10.0%
YUMA	118	1.8%	8	6.8%	3	2.5%
STATEWIDE	6,461	100.0%	496	7.7%	203	3.1%

CHART 19
NUMBER OF CHILDREN ENTERING OUT-OF-HOME CARE BY REPORTING PERIOD



CHILDREN IN OUT-OF-HOME CARE

Chart 20 below shows the number of children in out-of-home care on the last day of the current and past reporting periods.

On the last day of the current reporting period, 14,176 (80.5%) children were placed in family settings either with relatives or in foster homes. Placement information for children in out-of-home care for the current and prior reporting periods can be found in Chart 27. See Table 33 for the out-of-home population organized to show the number of children, grouped by age, in each placement type for the current reporting period.

For information on the age distribution of children in out-of-home care, see Chart 24, which displays this information for the current and prior reporting periods. The ethnicity of children in out-of-home care for the current and prior reporting periods is displayed in Chart 25.

**CHART 20
NUMBER OF CHILDREN IN OUT-OF-HOME CARE ON THE LAST DAY OF THE
REPORTING PERIOD BY REPORTING PERIOD**

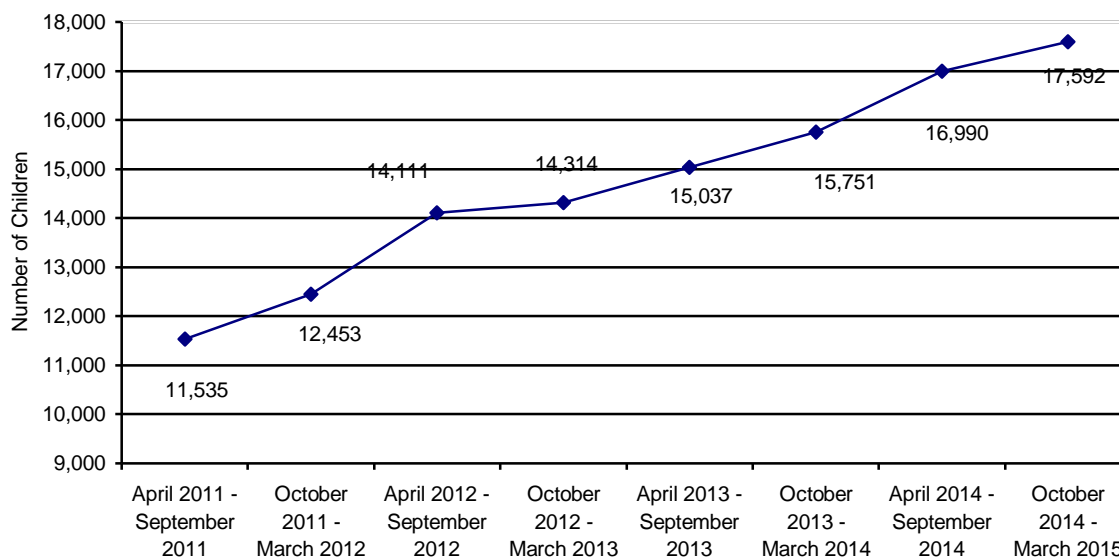


Chart 21 displays an increase in the number of young children ages 0-6 placed in group homes. In comparing March 2008 to March 2015, the number of young children in group homes, increased by 67 children. Chart 22 displays the increase in the number of young children ages 0-3 placed in shelter care.

In comparing March 2008 to March 2015, the number of young children in shelters, increased by 24 children. Chart 23 shows that the average length of time in shelter care has decreased; comparing March 2008 to March 2015, the average length of stay in shelter decreased from 103.4 to 101.2 days, a decrease of 2.2 days or 2.1%. The Department recognizes that shelter care is rarely, if ever, the best placement for children and continues to strive to place children in the best possible environment to ensure the safety and well-being of the child.

CHART 21
THE NUMBER OF CHILDREN IN GROUP HOMES AGES 0 THROUGH 6⁴

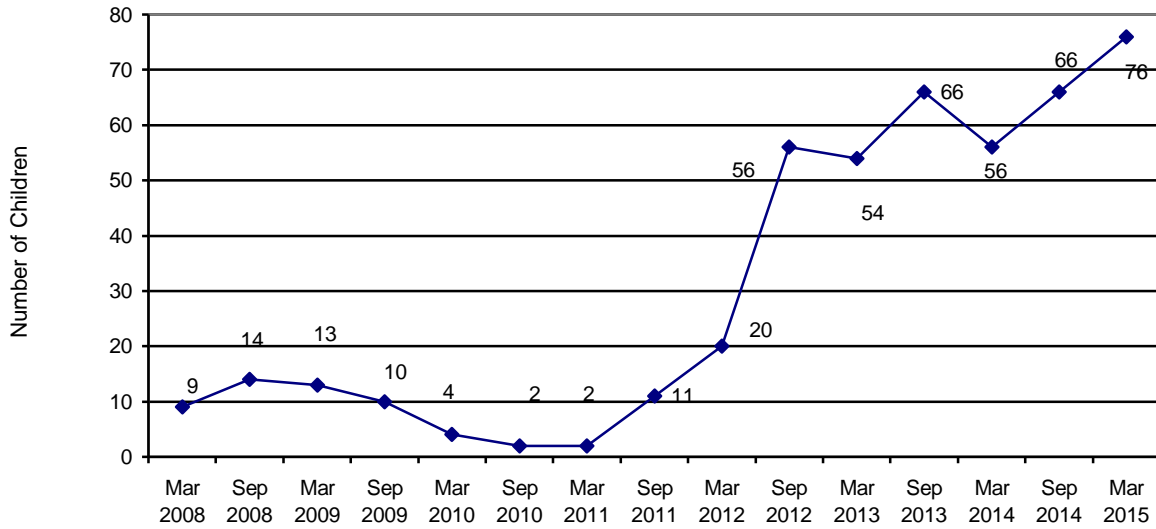
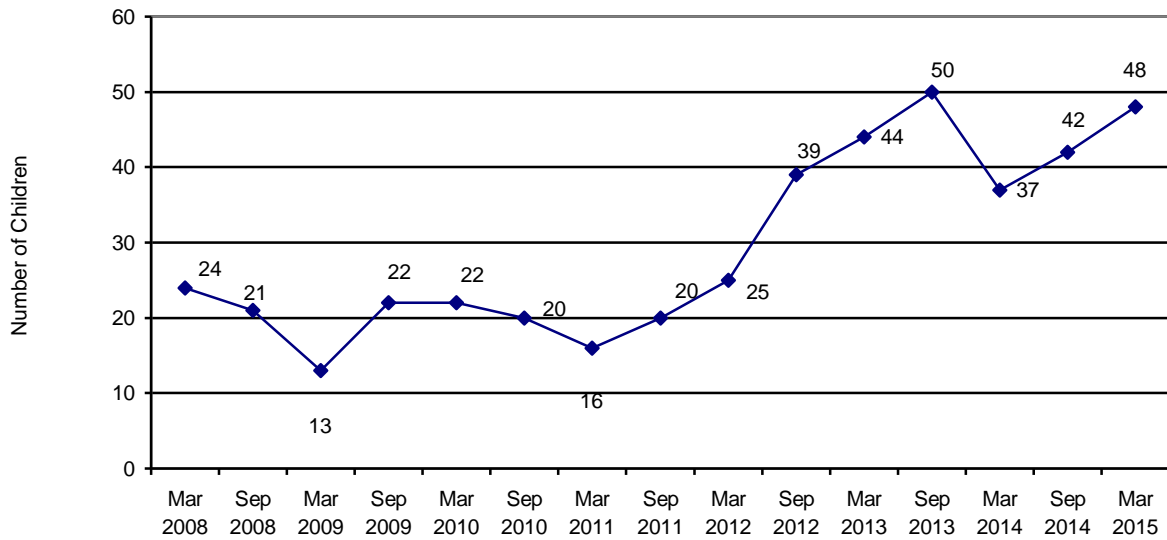


CHART 22
THE NUMBER OF CHILDREN IN SHELTER CARE AGES 0 THROUGH 3



⁴ This excludes infants placed with their mothers and children placed in foster home group models.

CHART 23
THE AVERAGE LENGTH OF STAY FOR CHILDREN AGES 0 TO 3 IN A SHELTER PLACEMENT ON THE LAST DAY OF THE REPORTING PERIOD

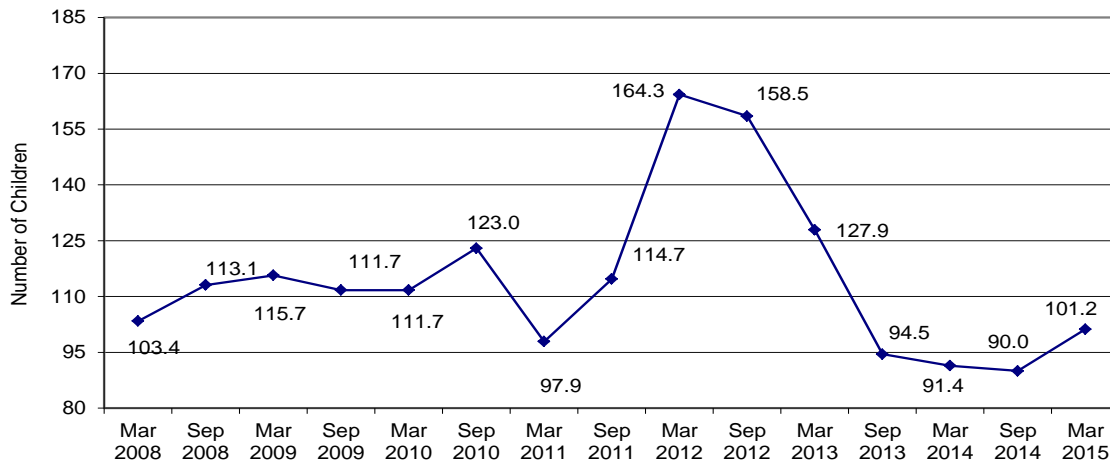
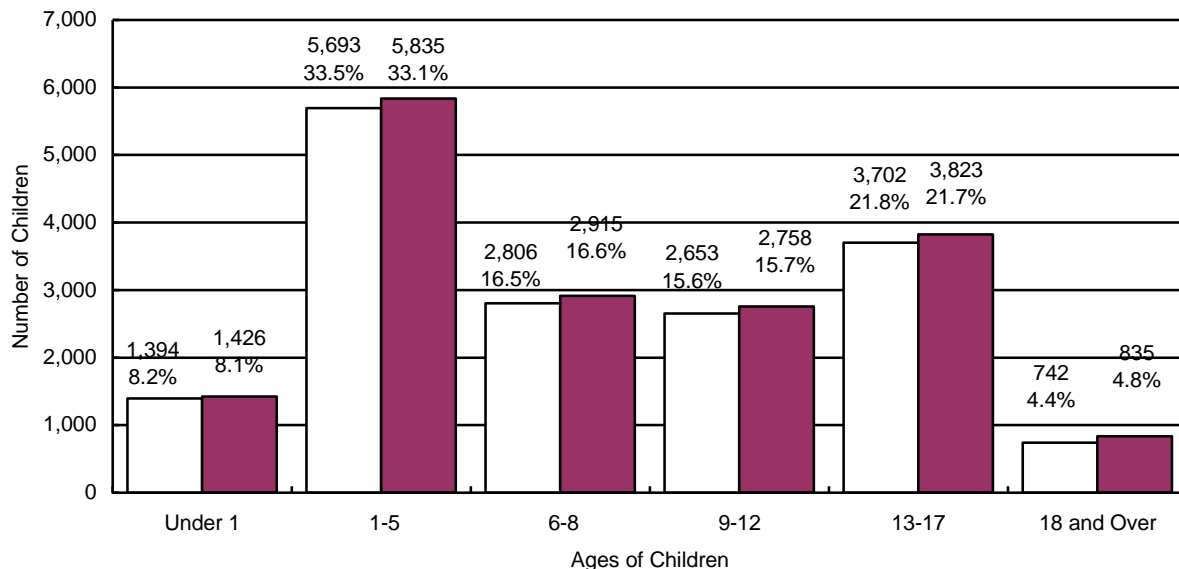
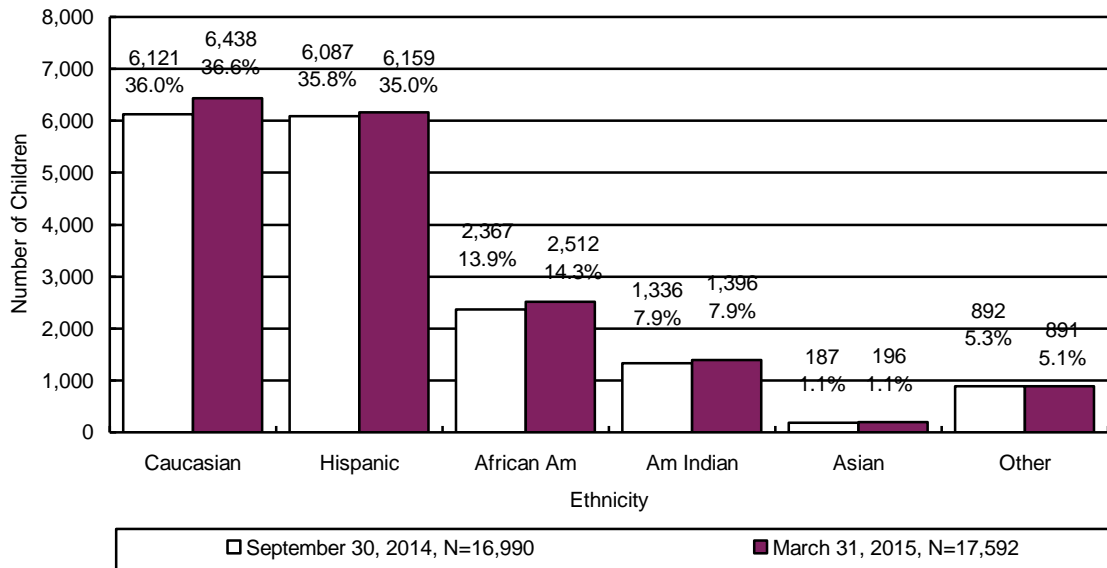


CHART 24
THE NUMBER OF CHILDREN IN OUT-OF-HOME CARE BY AGE



□ September 30, 2014, N=16,990 ■ March 31, 2015, N=17,592

CHART 25
THE NUMBER OF CHILDREN IN OUT-OF-HOME CARE BY ETHNICITY



For 55.5% of the children in out-of-home care, family reunification remains the primary case plan goal. See Chart 26 for additional detail on the case plan goals of children in out-of-home care.

CHART 26
THE NUMBER OF CHILDREN IN OUT-OF-HOME CARE BY CASE PLAN GOAL

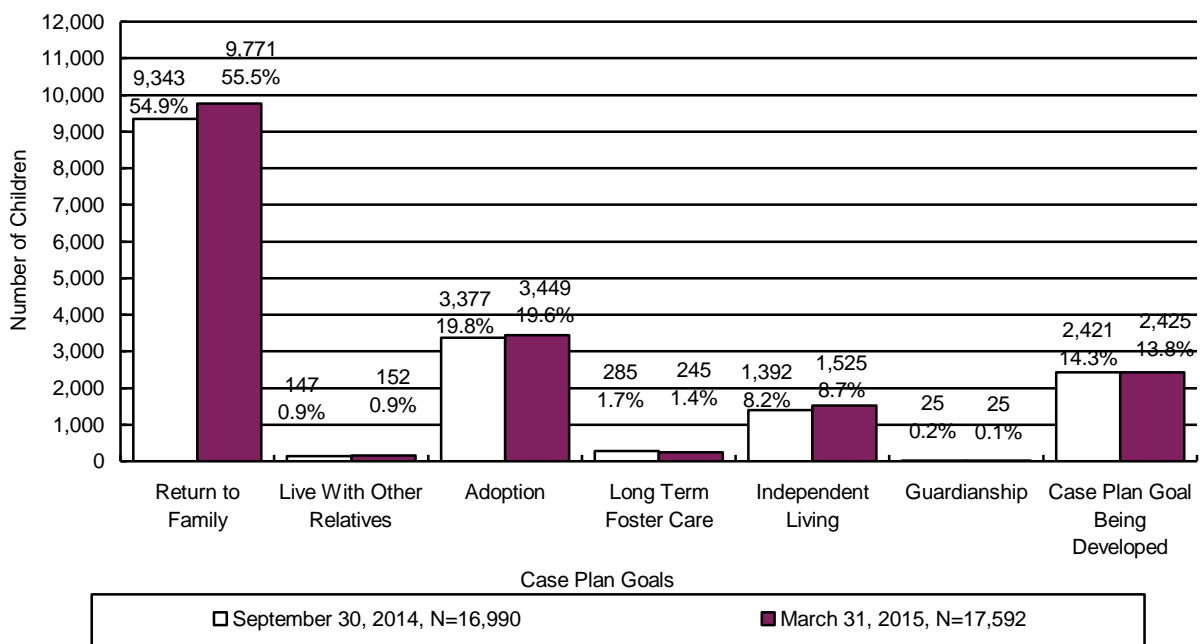
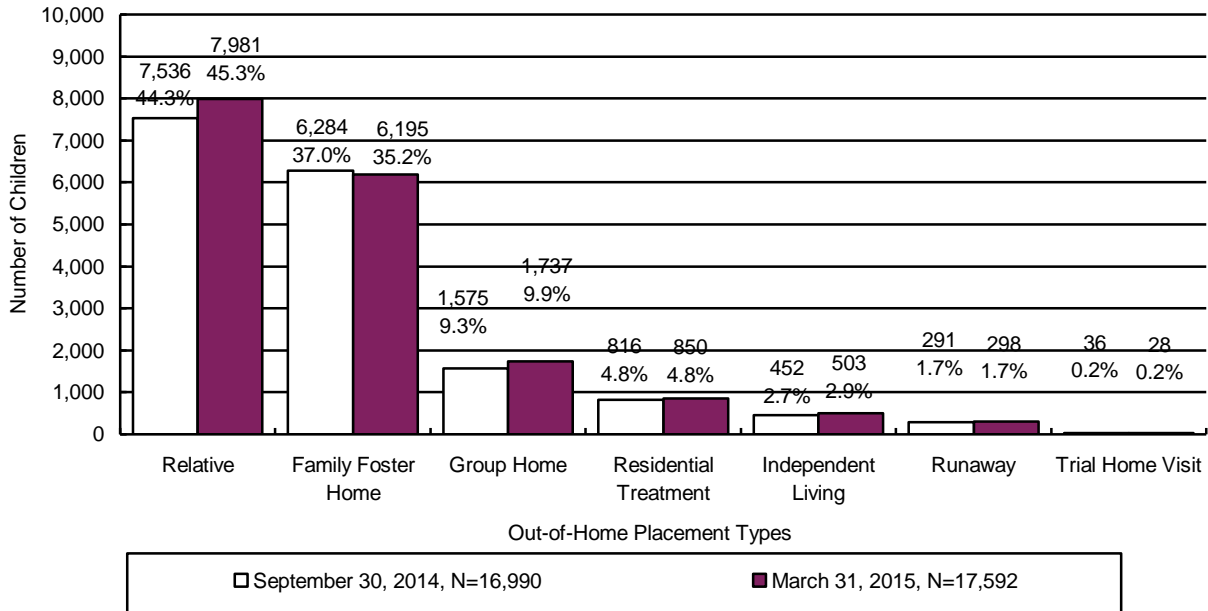


CHART 27
THE NUMBER OF CHILDREN IN OUT-OF-HOME CARE BY PLACEMENT TYPE⁵



⁵ In every reporting cycle DCS has children who, in the CHILDS database, do not have a placement identified when the data extract has run. It has been the historical practice of the Department to proportionally allocate the unidentified children across the placement types. The Department will develop strategies to minimize the need for this allocation in future reports.

**TABLE 33
THE NUMBER OF CHILDREN IN OUT-OF-HOME CARE BY PLACEMENT TYPE AND AGE**

	RELATIVE	FAMILY FOSTER	GROUP HOME	RESIDENTIAL TREATMENT ⁶	INDEPENDENT LIVING	RUNAWAY / ABSCONDED ⁷	TRIAL HOME VISIT	TOTAL	% OF TOTAL
UNDER 1	643	764	4	15	0	0	0	1,426	8.0%
1	805	693	7	19	0	1	3	1,528	8.6%
2	688	576	7	19	0	0	1	1,291	7.3%
3	583	450	14	12	0	0	1	1,060	6.0%
4	532	419	12	29	0	0	3	995	5.7%
5	531	379	23	23	0	3	2	961	5.5%
6	554	425	35	24	0	1	2	1,041	5.9%
7	551	338	49	20	0	1	2	961	5.5%
8	498	331	55	28	0	0	1	913	5.2%
9	452	293	72	19	0	0	0	836	4.8%
10	383	223	74	27	0	2	0	709	4.0%
11	332	188	90	19	0	1	2	632	3.6%
12	268	162	126	24	0	1	0	581	3.3%
13	244	161	146	52	0	6	0	609	3.5%
14	261	193	179	77	0	23	0	733	4.2%
15	224	161	207	94	0	40	4	730	4.2%
16	229	193	263	114	0	83	2	884	5.0%
17	161	173	289	124	3	113	4	867	4.9%
18 AND OLDER	42	73	85	111	500	23	1	835	4.8%
TOTAL	7,981	6,195	1,737	850	503	298	28	17,592	100.0%
% OF TOTAL	45.3%	35.2%	9.9%	4.8%	2.9%	1.7%	0.2%	100.0%	

⁶ This category includes shelter, detention, and hospital placement types.

⁷ This category includes children whose parents absconded with the child(ren) during this reporting period.

During the reporting period 900 children remained in a shelter or receiving home for more than 21 consecutive days. Chart 28 displays children by age grouping who remained in shelter more than 21 days for the current reporting period.

CHART 28
NUMBER AND PERCENTAGE OF CHILDREN IN SHELTER OR RECEIVING HOMES FOR MORE THAN 21 CONSECUTIVE DAYS BY AGE OF CHILD⁸

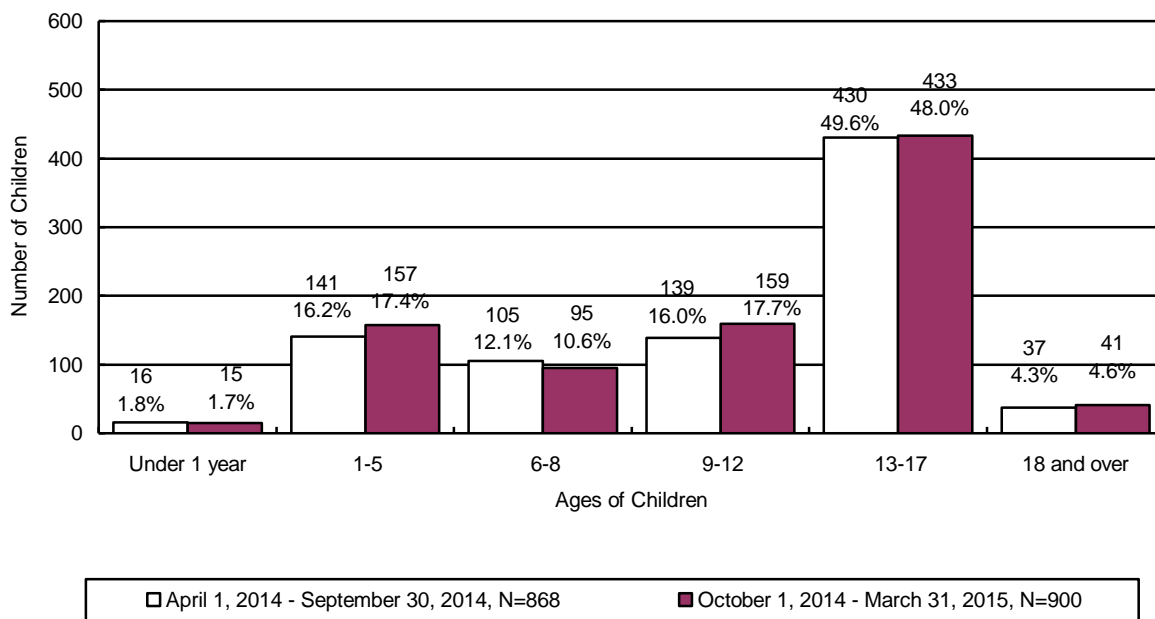
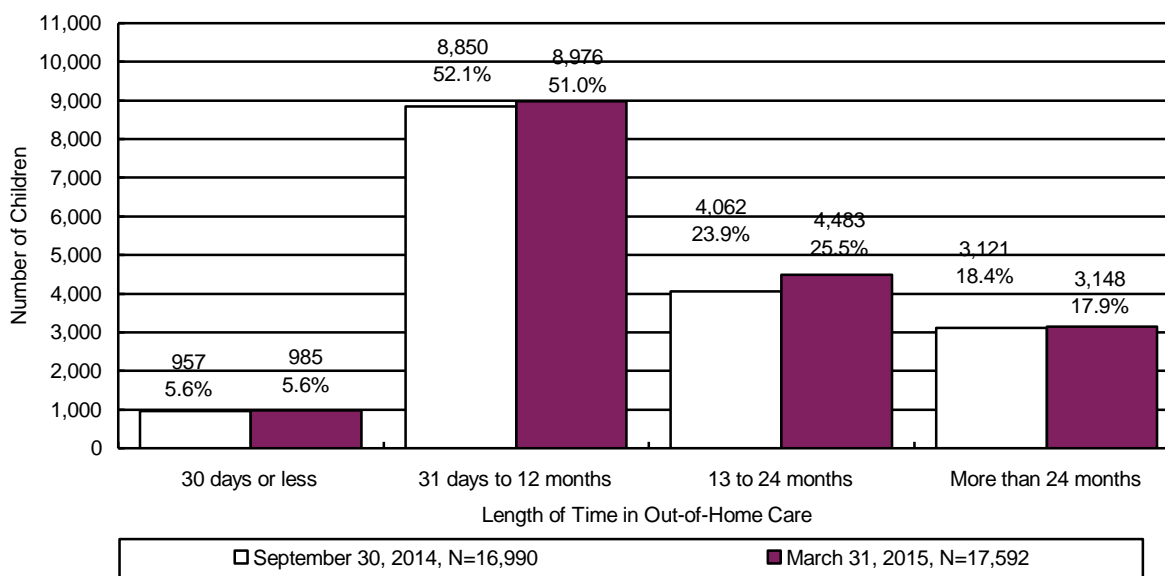


CHART 29
THE NUMBER OF CHILDREN IN OUT-OF-HOME CARE BY LENGTH OF TIME IN CARE



⁸ The chart displays children who spent more than 21 days in a shelter during the period. This number differs from the other out-of-home charts as they display children in out-of-home care on the last day of the reporting period.

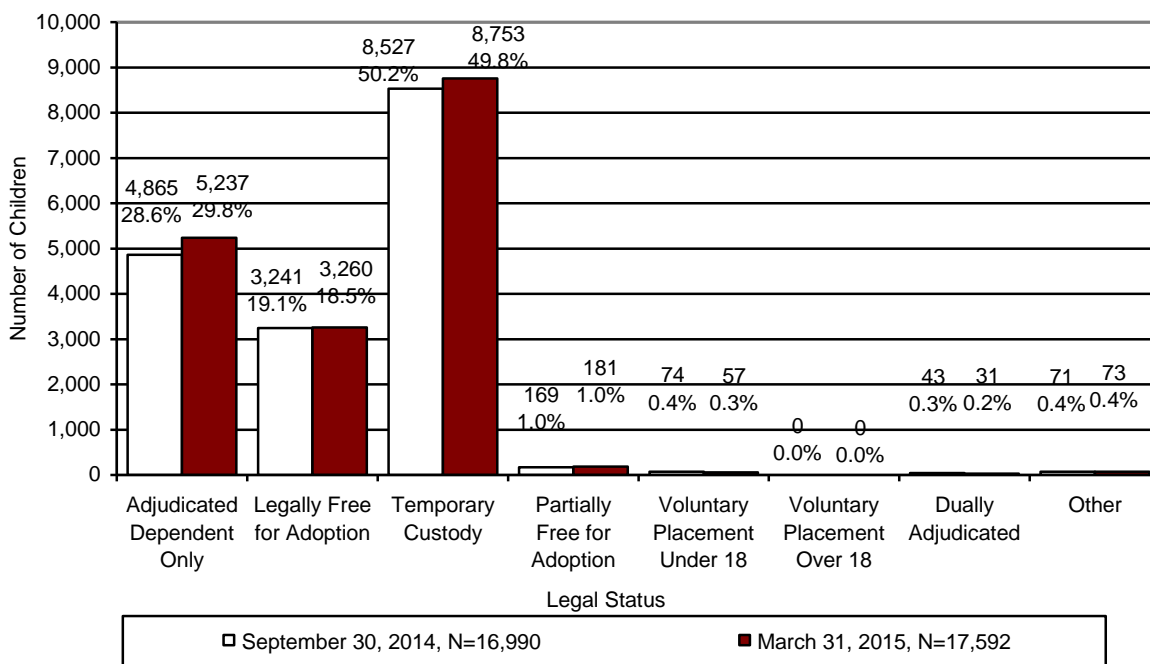
Information on the number of placements in terms of the average, median, and range for children in out-of-home care on the last day of the reporting period is shown in Table 34.

**TABLE 34
PLACEMENT INFORMATION FOR CHILDREN IN
OUT-OF-HOME CARE ON MARCH 31, 2015**

	Placements
Average	2.3
Median	2.0
Range Minimum	1
Range Maximum	51 ⁹

Chart 30 displays the legal status of the children in out-of-home care for the current and prior reporting periods. As is shown by the graph, the vast majority of children in out-of-home care fall into one of three legal statuses – adjudicated dependent, legally free for adoption, and children in the Department’s temporary custody.

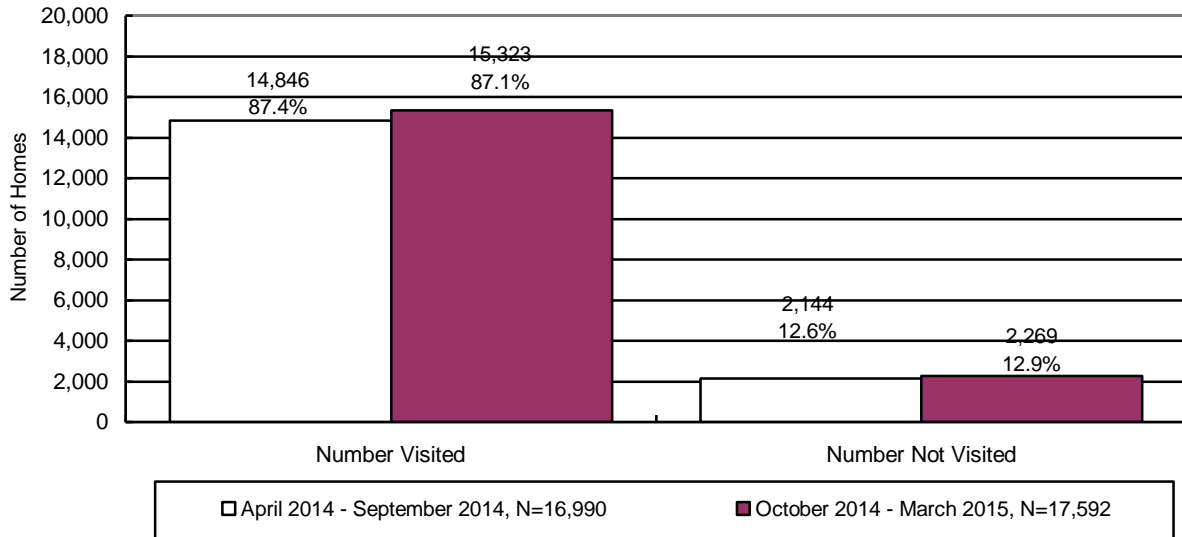
**CHART 30
CHILDREN IN OUT-OF-HOME CARE BY LEGAL STATUS**



⁹ Some children are so impacted by the severity of the abuse they have suffered, that they become unable to form meaningful relationships or to respond to services. These children tend to go through multiple placements with numerous individuals and agencies.

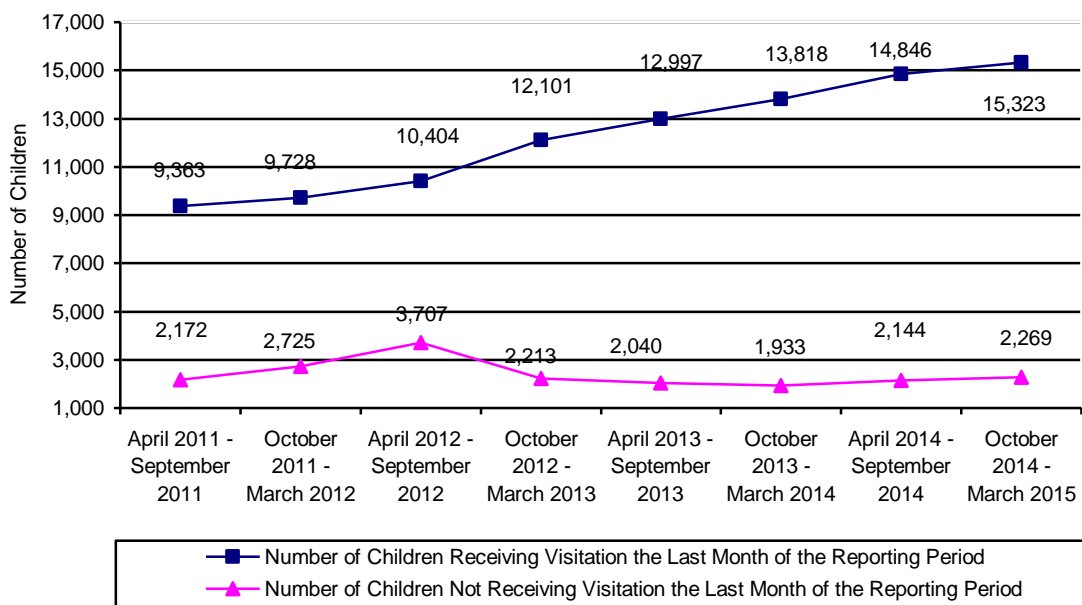
At the end of the reporting period there were 17,592 children in out-of-home care who required visitation. Of these children, visitation was documented in the automated system for 15,323 children.

CHART 31
THE NUMBER AND PERCENTAGE OF CHILDREN WHO RECEIVED THE REQUIRED VISITATION



Department policy requires specialists to have face-to-face contact with all parents at least once a month, including any alleged parents and parents residing outside of the child’s home where the case plan goal is family reunification. During the current reporting period, there were 2,463 parents who had a child with the case plan goal of reunification. Of those parents requiring visitation, 1,372 (55.7%) received the required visitation. This number does not reflect attempted visitation where contact with the parent(s) did not take place.

CHART 32
NUMBER OF CHILDREN RECEIVING AND NOT RECEIVING VISITATION BY REPORTING PERIOD



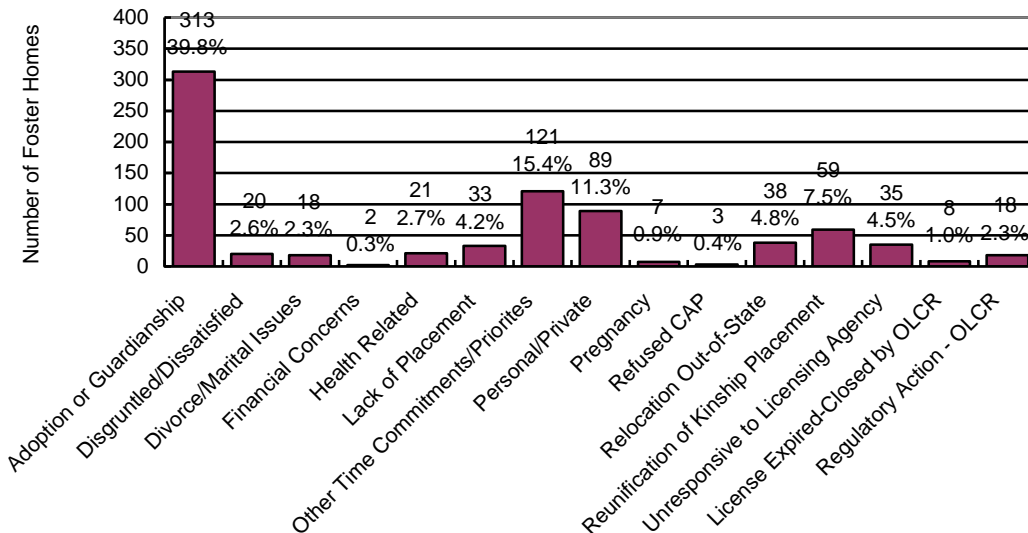
FOSTER HOME LICENSING, CLOSURES, & VISITATION

As of March 31, 2015, there were 4,497¹⁰ foster homes licensed for a total capacity of 9,079 spaces. Of the spaces, 2,554 are reported by contractors to be unavailable for placements. Reasons for this include, but are not limited to, licensing restrictions on age, bed holds for youth in treatment or hospitalization, foster parents' need for temporary reprieve from placements and corrective action plans. In addition, 1,089 spaces in available foster homes were unused spaces. This occurs when a match between the available spaces and children's needs was not possible. Unused spaces may be, but are not limited to, the result of a denial by foster parents and/or contractors to the Department's request for placement due to the severity of child's needs, potential risk to other children in the home, the distance of a foster home from child's family and/or lack of unique services in the foster home's vicinity.

Licensed foster homes include family foster homes, professional family foster homes (HCTC homes), respite foster homes, receiving foster homes, and developmentally disabled homes with DCS children placed in them. Foster home licenses specify the age range, gender and maximum number of children that can be placed in a home. Foster parents, in consultation with the licensing worker, decide the type of physical, behavioral, and psychological needs of children they can effectively parent based upon their own skill level, experiences, and desires.

During the current reporting period, 821 new homes were licensed to provide foster care and 785 homes left the system. This compares to 756 new homes being licensed and 822 homes leaving the system during the prior reporting period. The following chart gives the reasons for foster home closures for the current reporting period.

**CHART 33
REASON FOR FOSTER HOME CLOSURE FOR THE PERIOD OF
OCTOBER 1, 2014 THROUGH MARCH 31, 2015**

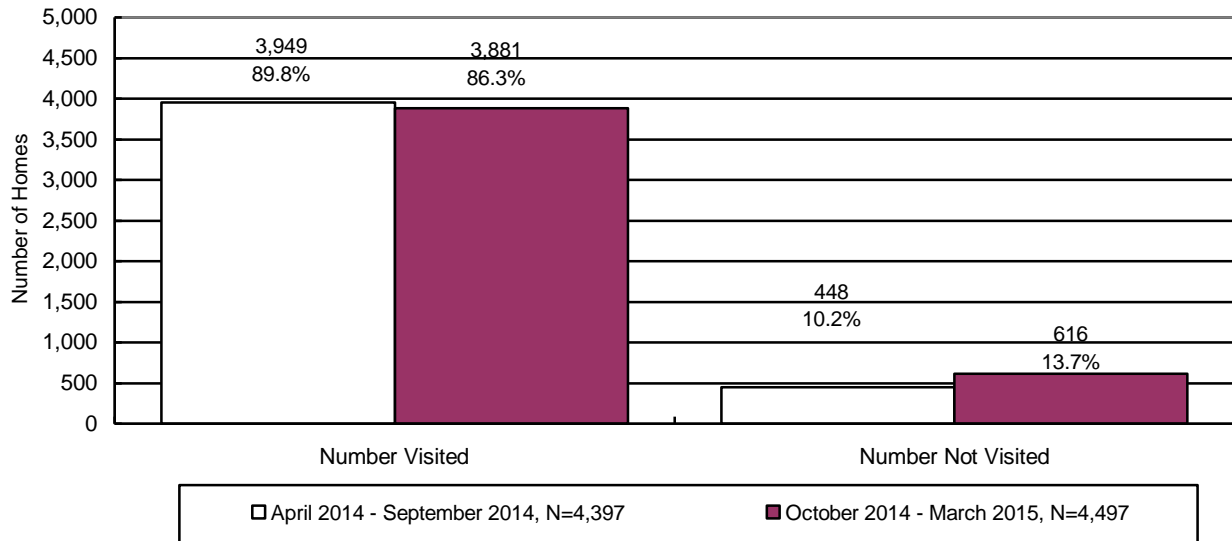


N=785

¹⁰ The number of homes cited in this report differs from the number cited by the Office of Licensing, Certification & Regulation (OLCR) due to the fact that the DCS utilizes both foster homes managed through HRSS contracts as well as homes that are licensed for developmental disabilities, licensed by the tribes, etc.

Chart 34 displays the number of foster homes that received the required visitation in the current and prior reporting periods. The Department believes that more foster homes received the required visitation than is indicated in the chart below. The under-reporting of foster home visitation is attributable to the lack of automation being used in reporting the foster home visitation process. The Department recognizes this as a problem and is working to correct this issue.

**CHART 34
THE NUMBER AND PERCENTAGE OF FOSTER HOMES WHO RECEIVED THE
REQUIRED VISITATION***



*Required visitations to foster homes, for license monitoring purposes, are performed by licensing case managers.

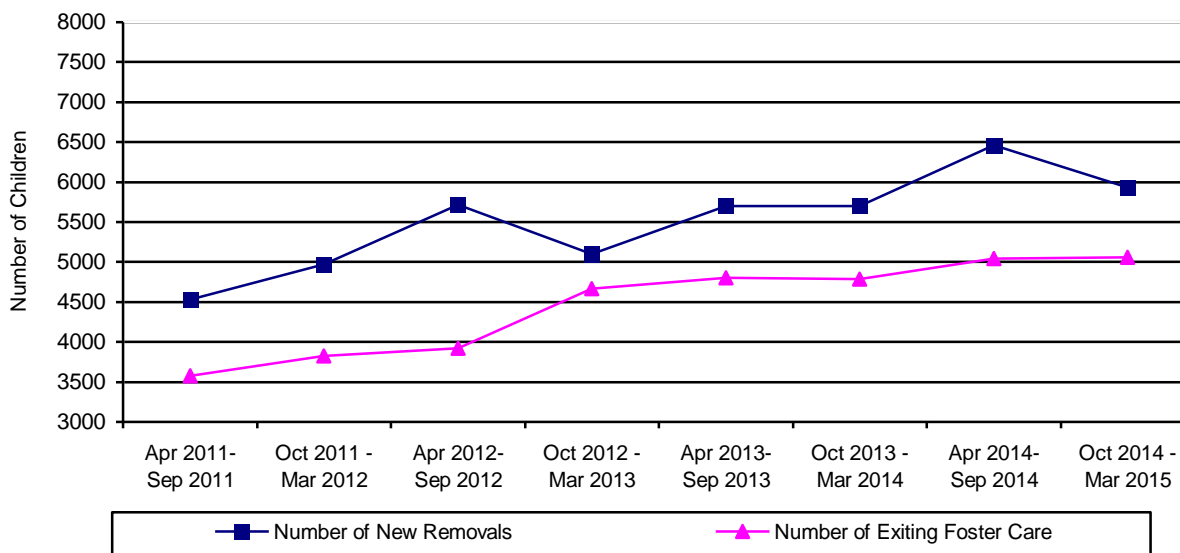
CHILDREN EXITING OUT-OF-HOME CARE

Table 35 below shows the history of the number of children who left the custody of the Department.

**TABLE 35
CHILDREN EXITING OUT-OF-HOME CARE BY PERIOD**

REPORTING PERIOD	NUMBER OF CHILDREN DISCHARGED	% CHANGE OVER PRIOR PERIOD
APRIL 2011 – SEPTEMBER 2011	3,574	-2.1%
OCTOBER 2011 – MARCH 2012	3,826	+7.1%
APRIL 2012 – SEPTEMBER 2012	3,923	+2.5%
OCTOBER 2012 – MARCH 2013	4,668	+19.0%
APRIL 2013 – SEPTEMBER 2013	4,805	+2.9%
OCTOBER 2013 – MARCH 2014	4,786	-0.4%
APRIL 2014 – SEPTEMBER 2014	5,042	+5.3%
OCTOBER 2014 – MARCH 2015	5,063	+0.4%

**CHART 35
CHILDREN ENTERING AND EXITING OUT-OF-HOME CARE BY REPORTING PERIOD**



The following nine tables depict the children who exited out-of-home care by reason. The tables display the following information: reasons the child left custody, their age, their ethnicity, the number of placements each child had, and the length of time in out-of-home care.

TABLE 36
TOTAL NUMBER OF CHILDREN EXITING DCS CUSTODY FOR THE END OF THE
REPORTING PERIOD ENDING ON MARCH 31, 2015

By Age	Number	Percentage
Under 1	249	4.9%
Ages 1 to 5	1,835	36.2%
Ages 6 to 8	869	17.2%
Ages 9 to 12	851	16.8%
Ages 13 to 17	895	17.7%
18 and Over	364	7.2%
Total	5,063	100.0%
Ethnicity	Number	Percentage
Caucasian	1,716	33.9%
Hispanic	1,900	37.5%
African American	715	14.1%
American Indian	386	7.6%
Asian	70	1.4%
Other	276	5.5%
Total	5,063	100.0%
By Number of Placements	Number	Percentage
One	2,728	53.9%
Two	1,146	22.6%
Three	513	10.1%
Four	282	5.6%
Five	114	2.3%
More than Five	280	5.5%
Total	5,063	100.0%
By Length of Time in Care	Number	Percentage
Less than 30 Days	722	14.3%
31 Days to 12 Months	1,651	32.6%
13 to 24 Months	1,454	28.7%
More than 24 Months	1,236	24.4%
Total	5,063	100.0%

	Average	Median
By Age	8.4	7.5
By Number of Placements	2.1	1.0
By Months of Time in Care	16.7	14.1

**TABLE 37
NUMBER AND PERCENTAGE OF CHILDREN EXITING DCS CUSTODY
FOR REASON OF "REUNIFICATION WITH PARENTS OR PRIMARY CARETAKER" FOR
THE REPORTING PERIOD ENDING MARCH 31, 2015**

By Age	Number	Percentage
Under 1	203	7.7%
Ages 1 to 5	901	34.2%
Ages 6 to 8	510	19.3%
Ages 9 to 12	476	18.1%
Ages 13 to 17	544	20.6%
18 and Over	2	0.1%
Total	2,636	100.0%
Ethnicity	Number	Percentage
Caucasian	885	33.6%
Hispanic	960	36.4%
African American	386	14.6%
American Indian	178	6.8%
Asian	43	1.6%
Other	184	7.0%
Total	2,636	100.0%
By Number of Placements	Number	Percentage
One	1,622	61.5%
Two	596	22.6%
Three	211	8.0%
Four	114	4.3%
Five	49	1.9%
More than Five	44	1.7%
Total	2,636	100.0%
By Length of Time in Care	Number	Percentage
Less than 30 Days	650	24.7%
31 Days to 12 Months	1,312	49.8%
13 to 24 Months	518	19.6%
More than 24 Months	156	5.9%
Total	2,636	100.0%

	Average	Median
By Age	7.8	7.2
By Number of Placements	1.7	1.0
By Months of Time in Care	8.8	7.2

**TABLE 38
NUMBER AND PERCENTAGE OF CHILDREN EXITING DCS CUSTODY
FOR REASON OF “LIVING WITH OTHER RELATIVES” FOR THE REPORTING PERIOD
ENDING MARCH 31, 2015**

By Age	Number	Percentage
Under 1	4	15.4%
Ages 1 to 5	10	38.5%
Ages 6 to 8	3	11.5%
Ages 9 to 12	5	19.2%
Ages 13 to 17	4	15.4%
18 and Over	0	0.0%
Total	26	100.0%
Ethnicity	Number	Percentage
Caucasian	5	19.2%
Hispanic	12	46.2%
African American	5	19.2%
American Indian	3	11.5%
Asian	0	0.0%
Other	1	3.8%
Total	26	100.0%
By Number of Placements	Number	Percentage
One	20	77.0%
Two	3	11.5%
Three	0	0.0%
Four	3	11.5%
Five	0	0.0%
More than Five	0	0.0%
Total	26	100.0%
By Length of Time in Care	Number	Percentage
Less than 30 Days	8	30.8%
31 Days to 12 Months	16	61.5%
13 to 24 Months	2	7.7%
More than 24 Months	0	0.0%
Total	26	100.0%

	Average	Median
By Age	7.0	4.9
By Number of Placements	1.5	1.0
By Months of Time in Care	4.8	3.3

**TABLE 39
NUMBER AND PERCENTAGE OF CHILDREN EXITING DCS
CUSTODY FOR REASON OF “ADOPTION” FOR THE REPORTING PERIOD
ENDING MARCH 31, 2015**

By Age	Number	Percentage
Under 1	32	2.0%
Ages 1 to 5	848	52.1%
Ages 6 to 8	310	19.0%
Ages 9 to 12	270	16.6%
Ages 13 to 17	168	10.3%
18 and Over	1	0.1%
Total	1,629	100.0%
Ethnicity	Number	Percentage
Caucasian	571	35.1%
Hispanic	651	40.0%
African American	221	13.6%
American Indian	114	7.0%
Asian	12	0.7%
Other	60	3.7%
Total	1,629	100.0%
By Number of Placements	Number	Percentage
One	775	47.6%
Two	414	25.4%
Three	217	13.3%
Four	110	6.8%
Five	33	2.0%
More than Five	80	4.9%
Total	1,629	100.0%
By Length of Time in Care	Number	Percentage
Less than 30 Days	0	0.0%
31 Days to 12 Months	98	6.0%
13 to 24 Months	713	43.8%
More than 24 Months	818	50.2%
Total	1,629	100.0%

	Average	Median
By Age	6.4	5.5
By Number of Placements	2.1	2.0
By Months of Time in Care	25.7	24.0

**TABLE 40
NUMBER AND PERCENTAGE OF CHILDREN EXITING DCS CUSTODY
FOR REASON OF “GUARDIANSHIP” FOR THE REPORTING PERIOD
ENDING MARCH 31, 2015**

By Age	Number	Percentage
Under 1	5	1.5%
Ages 1 to 5	52	16.1%
Ages 6 to 8	40	12.4%
Ages 9 to 12	91	28.2%
Ages 13 to 17	134	41.5%
18 and Over	1	0.3%
Total	323	100.0%
Ethnicity	Number	Percentage
Caucasian	98	30.3%
Hispanic	125	38.7%
African American	34	10.5%
American Indian	43	13.3%
Asian	6	1.9%
Other	17	5.3%
Total	323	100.0%
By Number of Placements	Number	Percentage
One	186	57.5%
Two	61	18.9%
Three	38	11.8%
Four	18	5.6%
Five	2	0.6%
More than Five	18	5.6%
Total	323	100.0%
By Length of Time in Care	Number	Percentage
Less than 30 Days	34	10.5%
31 Days to 12 Months	113	35.0%
13 to 24 Months	120	37.2%
More than 24 Months	56	17.3%
Total	323	100.0%

	Average	Median
By Age	11.2	11.9
By Number of Placements	2.0	1.0
By Months of Time in Care	15.1	14.2

**TABLE 41
NUMBER AND PERCENTAGE OF CHILDREN EXITING DCS CUSTODY
FOR REASONS OF “REACHING AGE OF MAJORITY” FOR THE REPORTING PERIOD
ENDING MARCH 31, 2015**

By Age	Number	Percentage
Under 1	0	0.0%
Ages 1 to 5	0	0.0%
Ages 6 to 8	0	0.0%
Ages 9 to 12	0	0.0%
Ages 13 to 17	5	1.4%
18 and Over	340	98.6%
Total	345	100.0%
Ethnicity	Number	Percentage
Caucasian	133	38.5%
Hispanic	117	34.0%
African American	57	16.5%
American Indian	21	6.1%
Asian	8	2.3%
Other	9	2.6%
Total	345	100.0%
By Number of Placements	Number	Percentage
One	75	21.7%
Two	54	15.7%
Three	36	10.4%
Four	31	9.0%
Five	27	7.8%
More than Five	122	35.4%
Total	345	100.0%
By Length of Time in Care	Number	Percentage
Less than 30 Days	6	1.7%
31 Days to 12 Months	74	21.5%
13 to 24 Months	81	23.5%
More than 24 Months	184	53.3%
Total	345	100.0%

	Average	Median
By Age	18.8	18.1
By Number of Placements	5.3	4.0
By Months of Time in Care	36.2	26.9

TABLE 42
NUMBER AND PERCENTAGE OF CHILDREN EXITING DCS CUSTODY
FOR REASON OF “TRANSFER TO ANOTHER AGENCY” FOR THE REPORTING PERIOD
ENDING MARCH 31, 2015

By Age	Number	Percentage
Under 1	4	7.4%
Ages 1 to 5	24	44.4%
Ages 6 to 8	4	7.4%
Ages 9 to 12	9	16.7%
Ages 13 to 17	12	22.2%
18 and Over	1	1.9%
Total	54	100.0%
Ethnicity	Number	Percentage
Caucasian	10	18.5%
Hispanic	9	16.7%
African American	7	13.0%
American Indian	24	44.4%
Asian	0	0.0%
Other	4	7.4%
Total	54	100.0%
By Number of Placements	Number	Percentage
One	28	51.8%
Two	14	25.9%
Three	5	9.3%
Four	2	3.7%
Five	1	1.9%
More than Five	4	7.4%
Total	54	100.0%
By Length of Time in Care	Number	Percentage
Less than 30 Days	13	24.1%
31 Days to 12 Months	26	48.1%
13 to 24 Months	12	22.2%
More than 24 Months	3	5.6%
Total	54	100.0%

	Average	Median
By Age	7.5	5.7
By Number of Placements	2.5	1.0
By Months of Time in Care	9.1	6.4

**TABLE 43
NUMBER AND PERCENTAGE OF CHILDREN EXITING DCS CUSTODY
FOR REASON OF “RUNAWAY” FOR THE REPORTING PERIOD
ENDING MARCH 31, 2015**

By Age	Number	Percentage
Under 1	0	0.0%
Ages 1 to 5	0	0.0%
Ages 6 to 8	0	0.0%
Ages 9 to 12	0	0.0%
Ages 13 to 17	26	57.8%
18 and Over	19	42.2%
Total	45	100.0%
Ethnicity	Number	Percentage
Caucasian	12	26.7%
Hispanic	24	53.3%
African American	4	8.9%
American Indian	3	6.7%
Asian	1	2.2%
Other	1	2.2%
Total	45	100.0%
By Number of Placements	Number	Percentage
One	21	46.7%
Two	4	8.9%
Three	3	6.7%
Four	4	8.9%
Five	2	4.4%
More than Five	11	24.4%
Total	45	100.0%
By Length of Time in Care	Number	Percentage
Less than 30 Days	11	24.4%
31 Days to 12 Months	10	22.2%
13 to 24 Months	8	17.8%
More than 24 Months	16	35.6%
Total	45	100.0%

	Average	Median
By Age	17.3	17.6
By Number of Placements	3.8	2.0
By Months of Time in Care	21.8	15.9

**TABLE 44
NUMBER AND PERCENTAGE OF CHILDREN EXITING DCS CUSTODY
FOR REASON OF “DEATH OF CHILD” FOR THE REPORTING PERIOD ENDING
MARCH 31, 2015**

By Age	Number	Percentage
Under 1	1	20.0%
Ages 1 to 5	0	0.0%
Ages 6 to 8	2	40.0%
Ages 9 to 12	0	0.0%
Ages 13 to 17	2	40.0%
18 and Over	0	0.0%
Total	5	100.0%
Ethnicity	Number	Percentage
Caucasian	2	40.0%
Hispanic	2	40.0%
African American	1	20.0%
American Indian	0	0.0%
Asian	0	0.0%
Other	0	0.0
Total	5	100.0%
By Number of Placements	Number	Percentage
One	1	20.0%
Two	0	0.0%
Three	3	60.0%
Four	0	0.0%
Five	0	0.0%
More than Five	1	20.0%
Total	5	100.0%
By Length of Time in Care	Number	Percentage
Less than 30 Days	0	0.0%
31 Days to 12 Months	2	40.0%
13 to 24 Months	0	0.0%
More than 24 Months	3	60.0%
Total	5	100.0%

	Average	Median
By Age	10.1	8.8
By Number of Placements	4.4	3.0
By Months of Time in Care	32.8	43.9

**TABLE 45
CHILDREN EXITING CARE FOR REASON OF DEATH BY CAUSE OF DEATH,
PLACEMENT TYPE AT TIME OF DEATH, AND COUNTY**

COUNTY	CAUSE OF DEATH	TYPE OF PLACEMENT AT TIME OF DEATH
Maricopa	Suicide	Family Foster Home
Maricopa	Respiratory failure due to pneumonia	DDD Foster care
Maricopa	Medically fragile child removed own trachea tube	DDD Foster care
Pima	Brain tumor	Medical Shelter
Pima	Automobile accident	Runaway

**TABLE 46
NUMBER OF CHILDREN IN AN OPEN CASE WHO DIED AS A RESULT OF ALLEGED
ABUSE AS CATEGORIZED BY THE CUSTODIAL RELATIONSHIP AND COUNTY FOR THE
PERIOD OCTOBER 1, 2014 THROUGH MARCH 31, 2015**

COUNTY	BIOLOGICAL PARENT(S)	OTHER FAMILY MEMBER	ADOPTIVE PARENT(S)	FOSTER CARE PARENT(S)	OTHER OUT-OF-HOME CARE PROVIDER	TOTAL	% OF TOTAL
APACHE	0	0	0	0	0	0	0.0%
COCHISE	0	0	0	0	0	0	0.0%
COCONINO	1	0	0	0	0	1	11.1%
GILA	0	0	0	0	0	0	0.0%
GRAHAM	0	0	0	0	0	0	0.0%
GREENLEE	0	0	0	0	0	0	0.0%
LA PAZ	0	0	0	0	0	0	0.0%
MARICOPA	4	0	0	2	0	6	66.6%
MOHAVE	0	0	0	1	0	1	11.1%
NAVAJO	0	0	0	0	0	0	0.0%
PIMA	0	0	0	0	0	0	0.0%
PINAL	1	0	0	0	0	1	11.1%
SANTA CRUZ	0	0	0	0	0	0	0.0%
YAVAPAI	0	0	0	0	0	0	0.0%
YUMA	0	0	0	0	0	0	0.0%
STATEWIDE	6	0	0	3	0	9	100.0%
% OF TOTAL	66.6%	0.0%	0.0%	33.4%	0.0%	100.0%	

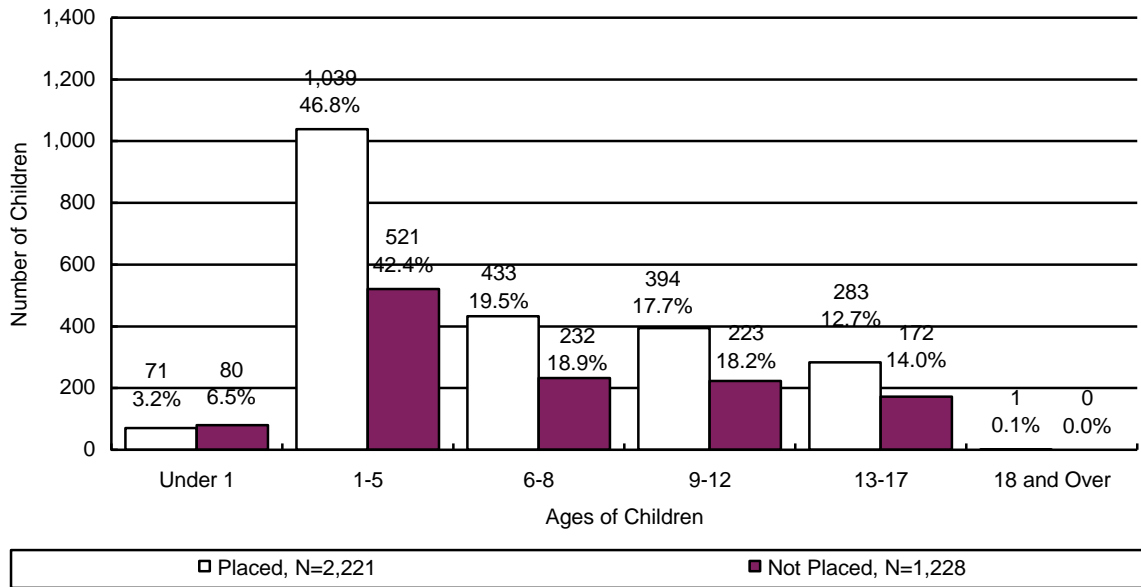
The number of child maltreatment deaths presented in the Semi-Annual Report is not comparable to child maltreatment deaths reported on the website by the Arizona Department of Economic Security (ADES).

- DCS posts information in accordance with A.R.S. § 8-807 on child fatalities due to abuse or neglect by the child’s parent, custodian or caregiver at: <https://dcs.az.gov/news/child-fatalities-near-fatalities-information-releases>.
- This information is posted when the information comes to DCS's attention and a final determination of the fatality due to abuse or neglect has been made by either a substantiated finding or specific criminal charges filed against a parent, guardian or caregiver for causing the fatality.
- The information that comes to DCS's attention and the determination of the fatality due to abuse or neglect may occur sometime after the actual incident for a number of reasons including a determination by a medical professional, a medical examiner, or a criminal child abuse arrest and charge of the perpetrator.

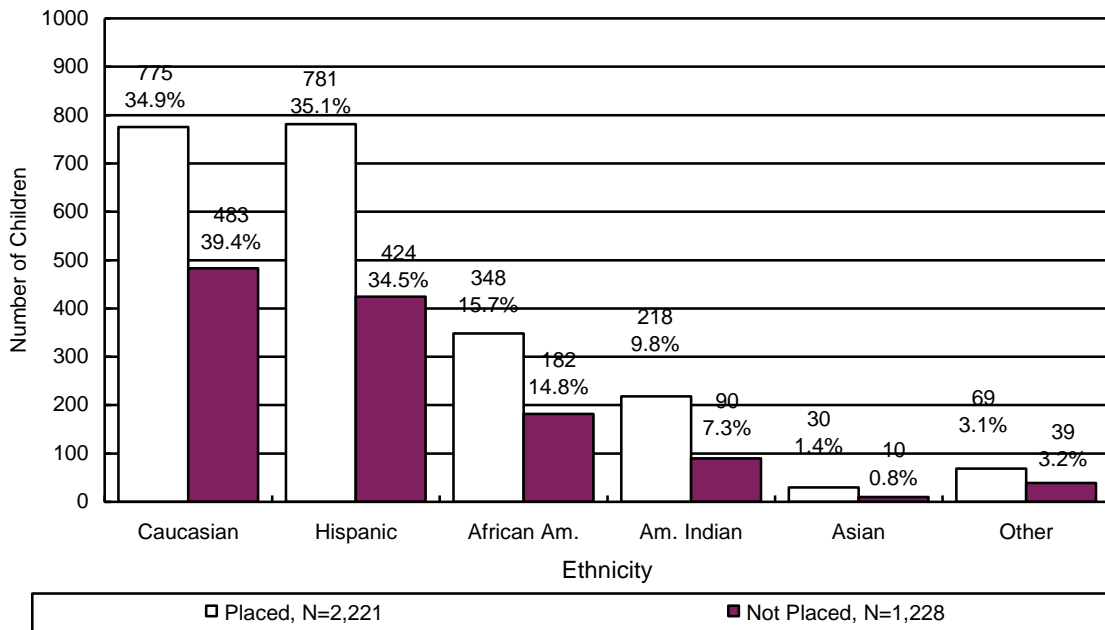
CHILDREN WITH CASE PLAN GOALS OF ADOPTION

Of the 17,592 children in out-of-home care on March 31, 2015, there were 3,449 or 19.6% who had a case plan goal of adoption. Of those, 2,221 have been placed and another 1,228 have not been placed. The age and ethnicity of the children with a case plan goal of adoption is displayed in Chart 36 and Chart 37.

**CHART 36
THE PLACEMENT AND NUMBER OF CHILDREN WITH A CASE PLAN GOAL OF ADOPTION BY AGE**



**CHART 37
THE PLACEMENT AND NUMBER OF CHILDREN WITH A CASE PLAN GOAL OF ADOPTION BY ETHNICITY**



**TABLE 47
 NUMBER OF CHILDREN WITH A PETITION FOR TERMINATION OF PARENTAL RIGHTS
 BY COUNTY FOR THE PERIOD OCTOBER 1, 2014 THROUGH MARCH 31, 2015**

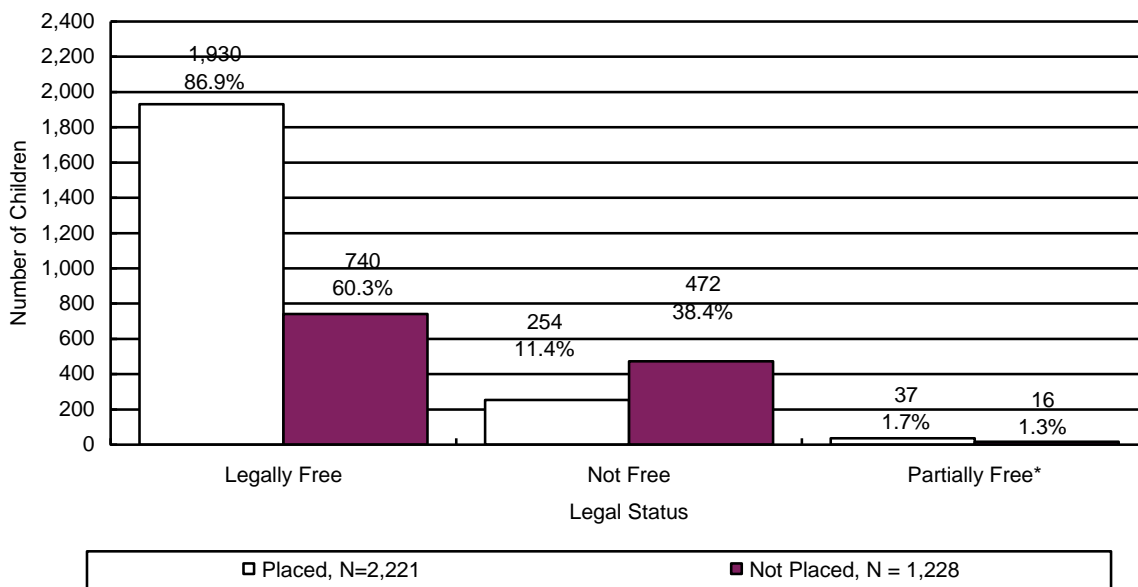
COUNTY	TERMINATION OF RIGHTS GRANTED	TERMINATION OF RIGHTS DENIED	TERMINATION OF RIGHTS GRANTED IN PART/DENIED IN PART	TERMINATION OF RIGHTS WITHDRAWN	TOTAL	% OF TOTAL
APACHE	4	0	0	0	4	0.2%
COCHISE	79	0	0	0	79	3.4%
COCONINO	13	0	0	0	13	0.6%
GILA	33	0	0	0	33	1.4%
GRAHAM	17	0	0	0	17	0.7%
GREENLEE	7	0	0	0	7	0.3%
LA PAZ	0	0	0	0	0	0.0%
MARICOPA	1,089	1	0	20	1,110	47.6%
MOHAVE	52	0	0	0	52	2.2%
NAVAJO	20	0	0	0	20	0.9%
PIMA	707	10	0	13	730	31.4%
PINAL	139	1	0	0	140	6.0%
SANTA CRUZ	2	0	0	0	2	0.1%
YAVAPAI	113	0	0	0	113	4.9%
YUMA	8	0	0	0	8	0.3%
STATEWIDE	2,283	12	0	33	2,328	100.0%
% OF TOTAL	98.1%	0.5%	0.0%	1.4%	100.0%	

The average length of time that a child with a case plan goal of “adoption” has spent in out-of-home care is 1 year 11 months and 29 days. Information on the number of placements in terms of the average, median, and range for children with a case plan goal of adoption is shown below in Table 48.

**TABLE 48
PLACEMENT INFORMATION FOR CHILDREN WITH A CASE PLAN GOAL OF ADOPTION**

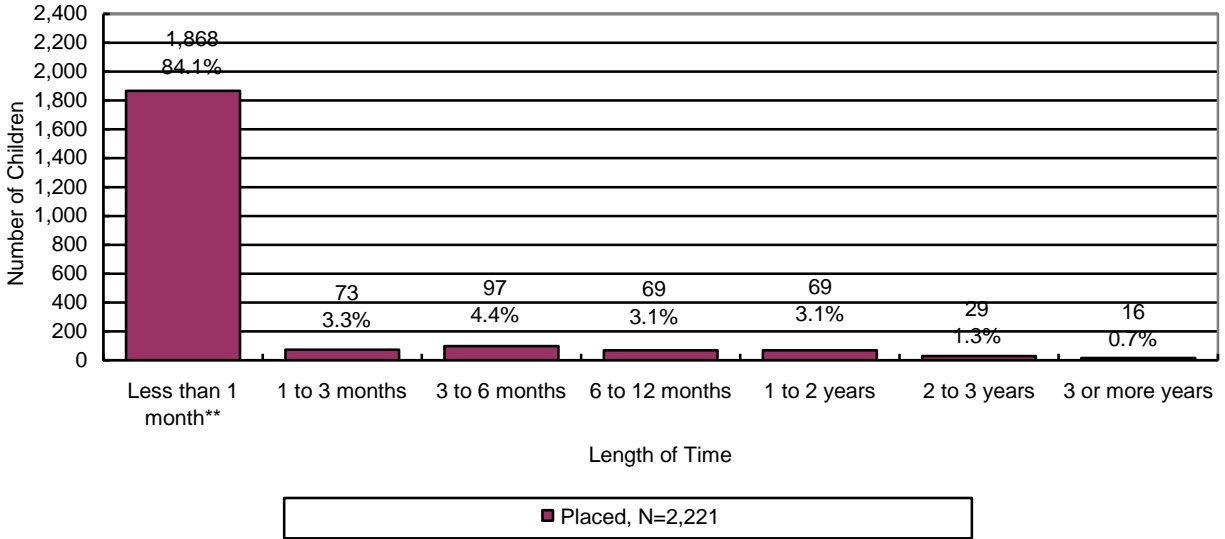
	Placements
Average	2.6
Median	2.0
Range Minimum	1
Range Maximum	37

**CHART 38
THE PLACEMENT AND NUMBER OF CHILDREN WITH A CASE PLAN GOAL OF ADOPTION BY LEGAL STATUS**



*Partially free refers to a situation where only one of the parent’s rights has been severed.

CHART 39
THE NUMBER OF CHILDREN WITH A CASE PLAN GOAL OF ADOPTION BY LENGTH OF TIME FROM CHANGE OF CASE PLAN GOAL OF ADOPTION TO ADOPTIVE PLACEMENT



**Approximately 70 percent of children are adopted by relatives or their foster parents and are already in their prospective adoptive placement at the time the case plan goal changes to adoption.

CHART 40
THE NUMBER OF CHILDREN WITH A CASE PLAN GOAL OF ADOPTION WHO WERE IN AN ADOPTIVE PLACEMENT BY THE MARITAL STATUS OF THE ADOPTIVE PARENT

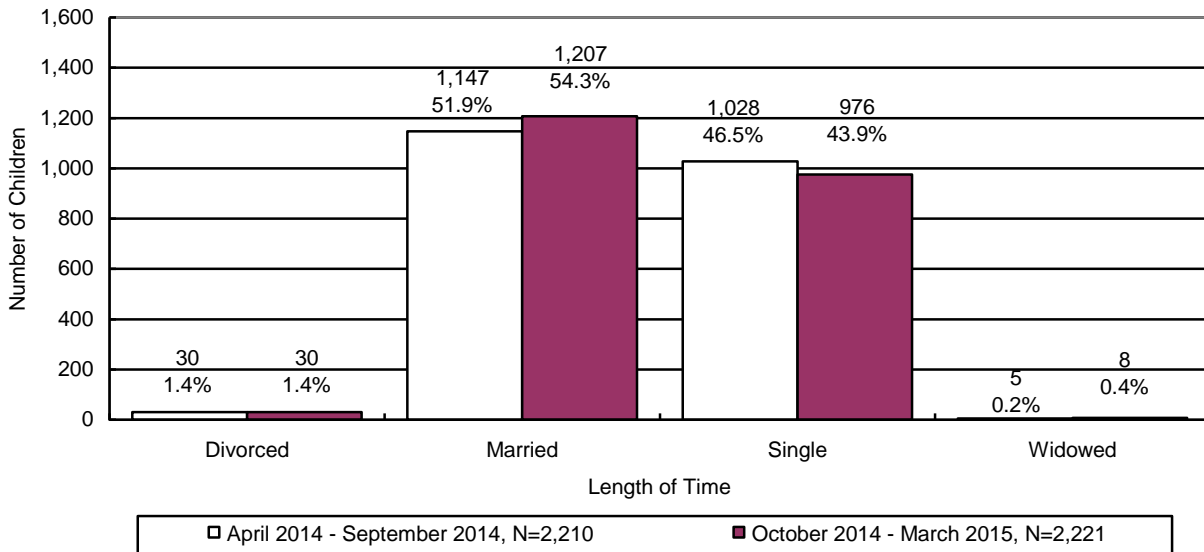
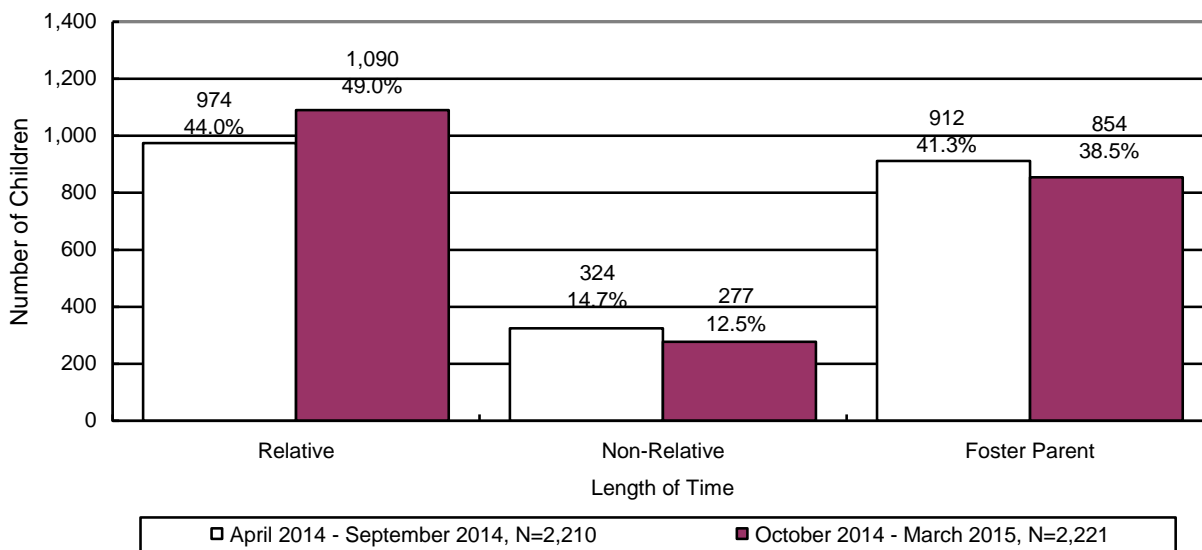


CHART 41
THE NUMBER OF CHILDREN WITH A CASE PLAN GOAL OF ADOPTION WHO WERE IN AN ADOPTIVE PLACEMENT BY THE RELATIONSHIP OF THE ADOPTIVE PARENT



DISRUPTIONS

TABLE 49
THE NUMBER OF CHILDREN WITH A CASE PLAN GOAL OF ADOPTION WHO WERE IN AN ADOPTIVE PLACEMENT AND DISRUPTED BY AGE AND ETHNICITY

By Age	Number	Percentage
Under 1	0	0.0%
Ages 1 – 5	1	14.3%
Ages 6 – 8	1	14.3%
Ages 9 – 12	3	42.8%
Ages 13 – 17	2	28.6%
18 and Over	0	0.0%
Total	7	100.0%
Ethnicity	Number	Percentage
Caucasian	1	14.3%
Hispanic	2	28.6%
African American	4	57.1%
American Indian	0	0.0%
Asian	0	0.0%
Other	0	0.0%
Total	7	100.0%

CHART 42
THE NUMBER OF CHILDREN WITH A CASE PLAN GOAL OF ADOPTION WHO WERE IN AN ADOPTIVE PLACEMENT AND DISRUPTED BY THE MARITAL STATUS OF THE ADOPTIVE PARENT

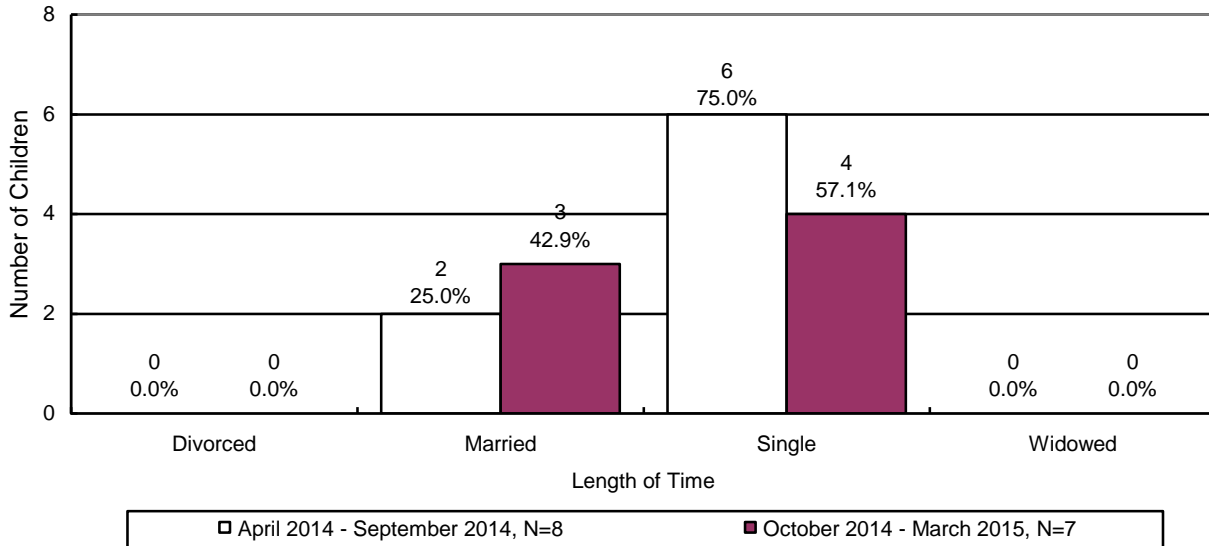
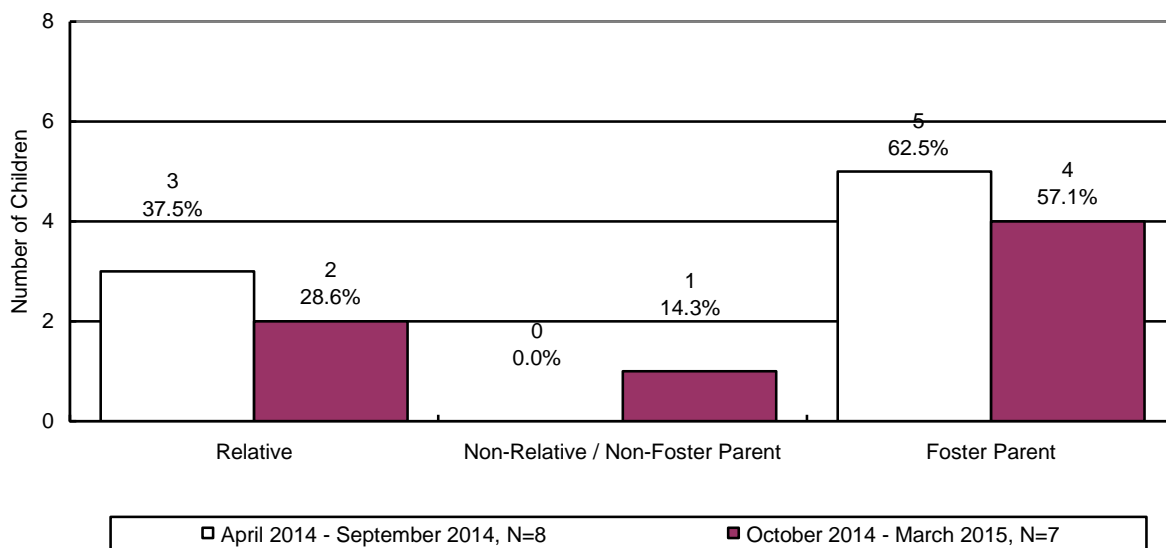
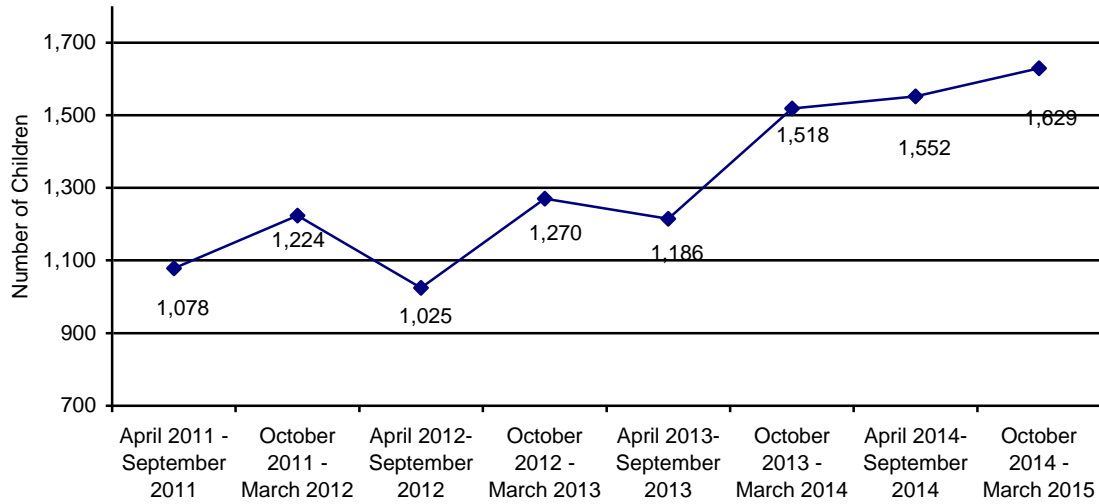


CHART 43
THE NUMBER OF CHILDREN WITH A CASE PLAN GOAL OF ADOPTION WHO WERE IN AN ADOPTIVE PLACEMENT AND DISRUPTED BY THE RELATIONSHIP OF THE ADOPTIVE PARENT



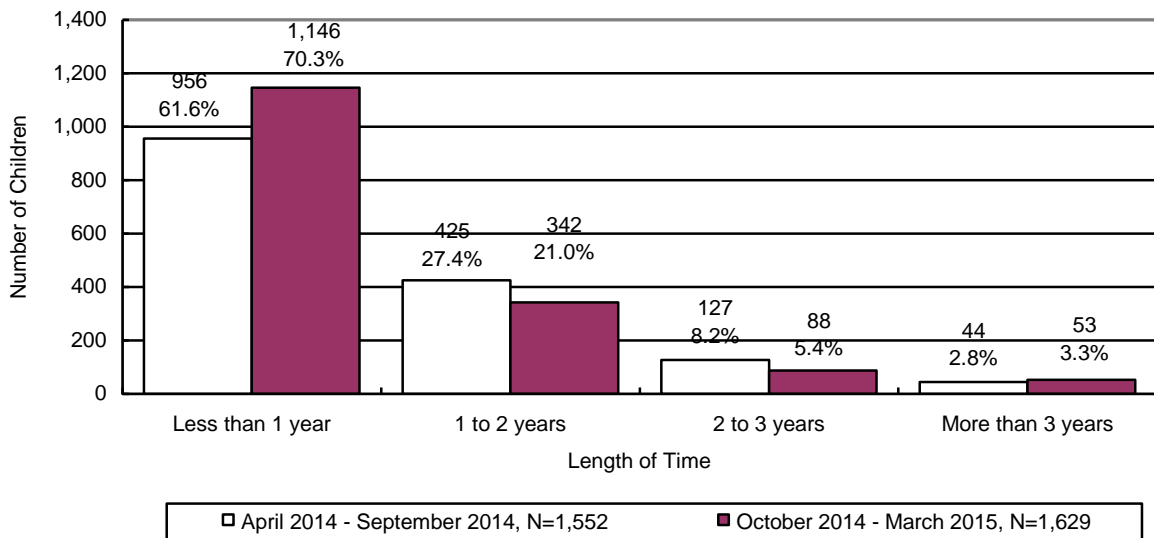
ADOPTIVE SERVICES

**CHART 44
THE NUMBER OF CHILDREN WITH A FINALIZED ADOPTION**



There were 1,629 children with a finalized adoption during the reporting period. Chart 45 displays the number of children with a finalized adoption during the reporting period by the average length of time in out-of-home placement before adoptive placement.

**CHART 45
THE NUMBER AND PERCENTAGE OF CHILDREN WITH A FINALIZED ADOPTION BY AVERAGE LENGTH OF TIME IN OUT-OF-HOME PLACEMENT BEFORE ADOPTIVE PLACEMENT**



The chart below displays the number of children with a finalized adoption by average length of time in adoptive placement before the final order of adoption.

CHART 46
THE NUMBER AND PERCENTAGE OF CHILDREN WITH A FINALIZED ADOPTION BY AVERAGE LENGTH OF TIME IN ADOPTIVE PLACEMENT BEFORE THE FINAL ORDER OF ADOPTION

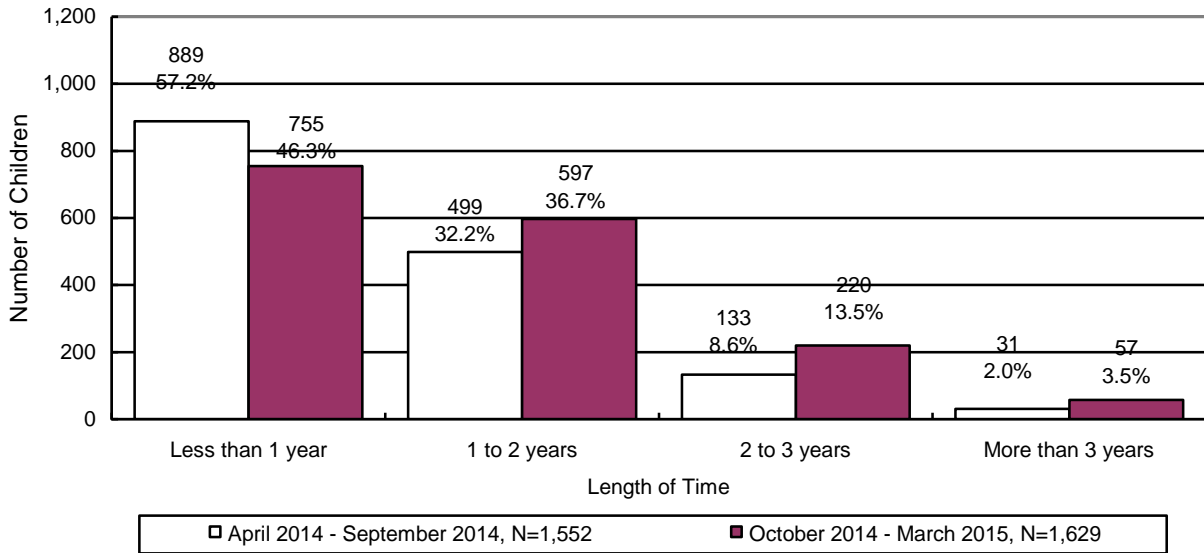


CHART 47
THE NUMBER OF CHILDREN WITH A FINALIZED ADOPTION BY THE MARITAL STATUS OF THE ADOPTIVE PARENT

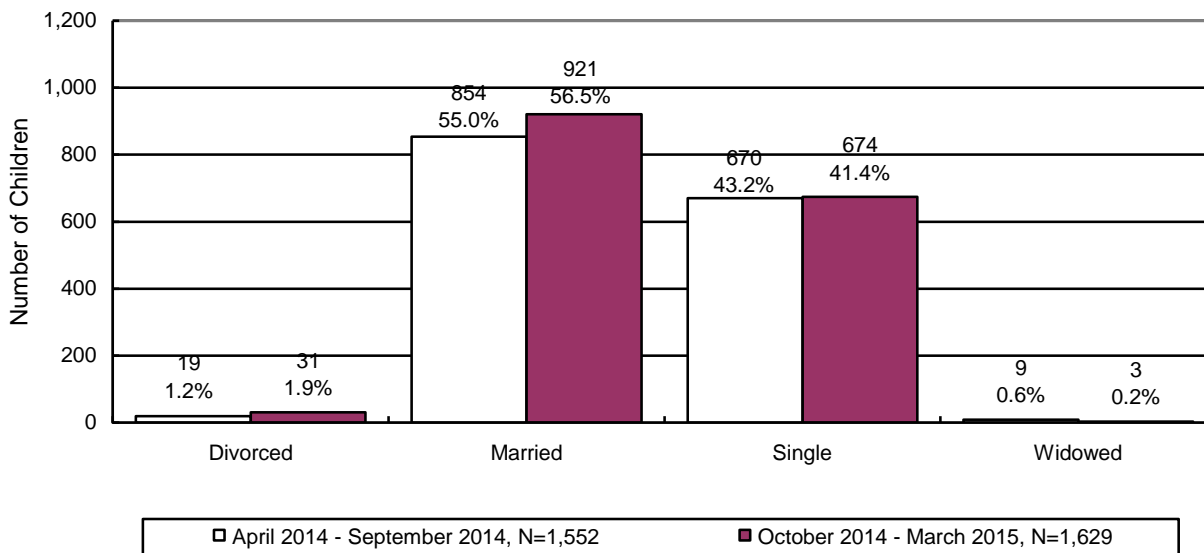


CHART 48
THE NUMBER OF CHILDREN WITH A FINALIZED ADOPTION BY THE RELATIONSHIP
OF THE ADOPTIVE PARENT TO THE CHILD

