

CHILD WELFARE REPORTING REQUIREMENTS

SEMI-ANNUAL REPORT

FOR THE PERIOD OF

APRIL 1, 2013 THROUGH SEPTEMBER 30, 2013

ARIZONA REVISED STATUTES

[LAWS 2011, CHAPTER 147]

DIVISION OF CHILD SAFETY AND FAMILY SERVICES

CHILD WELFARE REPORTING REQUIREMENTS

Arizona Revised Statute § 8-526, as amended by Laws 2011, Chapter 147 requires the Arizona Department of Economic Security (DES) to compile information and produce a semi-annual report for the periods ending on March 31st and September 30th of each year regarding Child Welfare Services, including Child Protective Services (CPS). This report, submitted by the newly created Division of Child Safety and Family Services (DCSFS) on behalf of DES, is for the semi-annual reporting period beginning on April 1, 2013 and ending on September 30, 2013. A more comprehensive discussion of the new Division is contained in the Executive Summary of this report.

TABLE OF CONTENTS

(Reporting period: April 1, 2013 through September 30, 2013)

	<u>Page</u>
EXECUTIVE SUMMARY	4
SEMI-ANNUAL COMPARISONS	7
REPORTS OF CHILD ABUSE AND NEGLECT	
Reports by reporting period and type of child maltreatment – statewide data.....	8-9
Sample communications to hotline, not meeting definition of a report.....	10
Reports received by priority - statewide data.....	11
Number of reports received by priority – county specific data.....	12
Number of reports received by maltreatment – statewide data.....	13
Number of reports received by maltreatment – county specific data.....	13-14
ASSIGNMENT OF INVESTIGATIONS	
Reports assigned for investigation by priority – statewide data.....	15
Reports assigned for investigation by priority – county specific data.....	16
Reports assigned for investigation by type of maltreatment – statewide data.....	17
Reports assigned for investigation by type of maltreatment – county specific data.....	17-18
INVESTIGATIONS OF CHILD ABUSE AND NEGLECT	
Reports not responded to by priority – county specific data.....	18-19
Investigations by priority – investigation open – statewide data.....	20
Investigations by priority – investigation open – county specific data.....	21
Investigations by type of child maltreatment – investigation open – statewide data.....	22
Investigations by type of child maltreatment – investigation open – county specific data.....	22-23
Reports where removal occurred – county specific data.....	24-25
COMPLETED INVESTIGATIONS	
Substantiation rate by reporting period.....	25-26
Investigations by priority – proposed substantiated reports – statewide data.....	27
Investigations by priority – proposed substantiated reports – county specific data.....	27-28
Investigations by type of child maltreatment – proposed substantiated reports – statewide data.....	28
Investigations by type of child maltreatment – proposed substantiated reports – county specific data.....	29
Investigations by priority – substantiated reports – statewide data.....	30

TABLE OF CONTENTS (continued)
(Reporting period: April 1, 2013 through September 30, 2013)

	<u>Page</u>
Investigations by priority – substantiated reports county specific data.....	30-31
Investigations by type of child maltreatment – substantiated reports – statewide data.....	31
Investigations by type of child maltreatment – substantiated reports – county specific data.....	32
Investigations by priority – unsubstantiated reports – statewide data.....	33
Investigations by priority – unsubstantiated reports – county specific data.....	33-34
Investigations by type of child maltreatment – unsubstantiated reports – statewide data..	34
Investigations by type of child maltreatment – unsubstantiated reports – county specific data.....	35
 SAFE HAVEN INFANTS	
Number of Safe Haven infants delivered during reporting period.....	36
 CHILDREN ENTERING OUT-OF-HOME CARE	
Total children entering out-of-home care.....	36
New entries by county – children under 18 years voluntary placement.....	37
New entries by county.....	38-39
New entries – statewide data.....	39
 CHILDREN IN OUT-OF-HOME CARE	
Children in out-of-home care by reporting period.....	40
Children in group homes ages 0 through 6.....	41
Children in shelter ages 0 through 3.....	41
The average length of stay in a shelter placement for children ages 0-3 who were in a shelter placement on the last day of the reporting period.....	42
All children in care by age and ethnicity.....	42-43
All children in care by case plan goal and placement type.....	43-44
All children in care by placement type and age.....	45
Children in shelter or receiving homes for more than 21 days.....	46
Children in out-of-home care by length of time in care.....	46
Children in out-of-home care by legal status.....	47
Children receiving and not receiving required visitation.....	48
 FOSTER HOME LICENSING, CLOSURES, AND VISITATIONS	
Foster homes licensed.....	49
Child bed spaces available.....	49
Foster homes closed and reason for closure	49
Number of foster homes receiving the required visitation.....	50
 CHILDREN EXITING OUT-OF-HOME CARE	
Semi-Annual comparisons of total number exiting care – for all reasons.....	51
Total number exiting care.....	52
Total number exiting care – for reason of reunification with parents.....	53
Total number exiting care – for reason of living with other relatives.....	54
Total number exiting care – for reason of adoption.....	55
Total number exiting care – for reason of guardianship.....	56

TABLE OF CONTENTS (continued)
 (Reporting period: April 1, 2013 through September 30, 2013)

	<u>Page</u>
Total number exiting care – for reason of reaching age of majority.....	57
Total number exiting care – for reason of transfer to another agency.....	58
Total number exiting care – for reason of runaway.....	59
Total number exiting care – for reason of death of child.....	60
Total number exiting care – by cause of death.....	61
Total number exiting for reason of death of child – with alleged abuse.....	61
CHILDREN WITH CASE PLAN GOALS OF ADOPTION	
Number of children with a petition for termination of parental rights.....	62
The placement and number of children with case plan goals of adoption by age.....	63
The placement and number of children with case plan goals of adoption by ethnicity.....	64
The placement and number of children with case plan goals of adoption by legal status..	64
Number of children – length of time from change of case plan goals of adoption to adoptive placement.....	65
Number of children in an adoptive placement by the marital status of the adoptive parent.....	65
Number of children in an adoptive placement by the relationship of the adoptive parent.....	66
DISRUPTIONS	
Number of children with a case plan goal of adoption in an adoptive placement and disrupted by age and ethnicity.....	66
Number of children with a case plan goal of adoption in an adoptive placement and disrupted by the marital status of the adoptive parent.....	67
Number of children with a case plan goal of adoption in an adoptive placement and disrupted by the relationship of the adoptive parent.....	67
ADOPTIVE SERVICES	
Number of children with a finalized adoption.....	68
Number of children with a finalized adoption by average length of time in out-of-home placement before adoptive placement.....	68
Number of children with a finalized adoption by average length of time in adoptive placement before the final order of adoption.....	69
Number of Children with a finalized adoption by the marital status of the adoptive parent.....	69
Number of children with a finalized adoption by the relationship of the adoptive parent.	70

Executive Summary

The Arizona Department of Economic Security's Division of Child Safety and Family Services (Division) is pleased to publish this semi-annual report for April 2013 through September 2013 in compliance with A.R.S. §8-526. This report is intended to provide its readers an opportunity to review the impact of the Division's process improvements in relation to key performance indicators.

As a result of the identification of the practice of designating cases as "not investigated" (NI), Governor Brewer created an independent Child Advocate Response Examination Team (CARE Team) charged with providing oversight of the investigation of all NI reports. On January 31, 2014, the CARE Team Report was released, providing information on the status of the investigative process for all known NI reports. At the end of January, 100% of the cases initially given an NI status were assigned to an investigator and more than 60% of the NI reports were actively being worked. The Division no longer utilizes the "not investigated" practice and all received reports are assigned for field investigation.

On January 13, 2014, Governor Brewer signed Executive Order 2014-01 establishing a cabinet-level child safety and family services division, creating the new Division of Child Safety and Family Services and eliminating the Division of Children, Youth and Families, under the direction of the newly appointed Director Charles Flanagan. While the new Division remains statutorily and administratively linked to DES, it will report directly to the Governor on all administrative and policy matters involving child welfare, including CPS, foster care, adoption and the Comprehensive Medical and Dental program.

NOTE: Since the new Division was not created until January 13, 2014, which is after the September 30, 2013 end date that this report covers, much of the nomenclature and language still refers back to the previous Division of Children, Youth and Families (DCYF) and Department of Economic Security (DES or Department). This language will be updated in future reports to reflect the new Division of Child Safety and Family Services.

The newly created Division will continue to pursue strategies to achieve improved outcomes for children and families. Strategies initiated by DCYF include a comprehensive review and streamlining of the investigation process and documentation requirements, a reduction in the amount of paperwork our investigative and on-going caseworkers must complete by eliminating redundancies, implementing technology tools, decreased phone wait times at the CPS Hotline, improvements to the CPS Specialist hiring process, and active recruitment for family foster homes. In addition, the CARE Team released a report highlighting recommendations for the Division after thorough examination of the agency personnel, operations, processes and policies. The Division will work closely with the Legislature and the Governor's office to ensure that all recommendations that will improve the outcomes for children and families are properly executed.

The data contained within this Semi-Annual Report helps to demonstrate the impact of implemented process improvements and highlights areas of progress. At the same time, the report assists with identifying where continued focus is needed by the Division, stakeholders, policy makers and advocacy groups. By working collaboratively to address the needs of children and to prevent child abuse, additional targeted resources and/or strategies that are put in place to improve outcomes for children will be implemented in a more coordinated and timely manner.

Child Abuse Hotline and Child Protective Services (CPS) Investigations

The statewide Child Abuse Hotline received 22,032 calls that met the statutory criteria for a CPS report. Of the 22,032 reports, 257 reports (1.2%) were referred to other jurisdictions, military, or tribal governments for investigation. The 21,775 (98.8%) remaining reports were either assigned to child welfare specialists for

investigation—20,122 cases—or were designated as NI—1,653 cases. All cases designated as NI have been assigned for investigation, including the 1,653 NI cases from the April 2013 – September 2013 reporting period. For updated information on the number of NI cases that have received a response, see the CARE Team website at <https://azcareteam.az.gov/node?page=2>.

Of the 21,775 CPS reports assigned for investigation or designated NI during this reporting period, 11,212 (51.5%) had investigation closures entered into the Children's Information Library and Data Source (CHILDS) statewide case management information system. Closing an investigation means that the initial investigation of the original allegations of abuse or neglect has been completed and, if necessary, the appropriate case plan is put in place. Many factors can impact the closure of an investigation, including time needed for the child welfare specialists to obtain all information required to complete an accurate and thorough assessment.

Of the 21,775 CPS reports subject to substantiation during this reporting period, 1,456 (6.7%) were substantiated. An additional 1,316 (6.0%) were proposed for substantiation by child welfare specialists and are currently awaiting the results of the appeals process. Over time, the number of substantiated and proposed substantiated CPS reports associated with this time period will increase as investigation findings are entered into CHILDS. It is sometimes difficult to substantiate allegations of abuse or neglect because current state laws that define child maltreatment do not include many situations related to child neglect or sexual abuse.

Children in Out-of-Home Care

The Division remains committed to working with the community to keep children safe, strengthen families, and prevent the need for children to be removed from their homes. Notwithstanding this commitment, the number of children in out-of-home care increased from 14,314 in the prior reporting period to 15,037 in September 2013. In attempting to understand the increase in the number of children in out-of-home care, we have identified that the number of children removed, relative to the number of reports received has remained relatively constant at approximately 23% to 25% of reports result in removals.

Of the children in out-of-home care, the Division continues its success in placing children in the most family-like setting possible. In September 2013, 12,171 children – or approximately 80.9 percent of all children in out-of-home care – were placed with relatives or licensed foster parents. An additional 234 children were placed with their parents on a trial home visit and 326 youth were residing in independent living settings. Efforts to increase the number of licensed foster parents who are able to meet the needs of children requiring out-of-home placement resulted in 717 new homes being licensed during the reporting period.

The state requires that CPS conduct monthly face-to face visitation with children in foster care. The current report shows that 86.4 percent of the children in foster care received their visit during the last month of the current reporting period ending September 2013. This compares to 84.5 percent receiving their visit during the last month of the prior reporting period ending March 2013. The Division recognizes there is a strong correlation between consistent and timely visitation and positive outcomes for children who have been removed from their home. Regular parent-child visitation, along with CPS Specialists' visits with the child, are both associated with achieving permanency and other indicators of child well-being. The Division continues to make efforts to improve its rate of visitation.

Permanency for Children

The Division continues to work toward achieving permanency for children placed in out-of-home care. The total number of children achieving permanency through family reunification, adoption or legal guardianship was 4,269 this reporting period, compared to 3,328 the same reporting period last year.

Compared to the same reporting period last year, in this reporting period:

- 2,718 children exited the system to family reunification, an increase of 184 children or 7.3 percent.
- 1,215 children exited to adoption, a decrease of 55 children or 4.3 percent.
- 336 children exited to guardianship, an increase of 5 children or 1.5 percent.

Challenges

The Division continues to face both workload and process challenges in its efforts to ensure safety and promote permanency for abused and neglected children. Examples of the more pressing challenges the Division continues to face include:

- Increased number of Child Abuse Hotline reports, particularly in the urban counties.
- Increased number of children in out-of-home care.
- Contending with a high workload for field staff.

Additionally, the Division continues to develop strategies to mitigate challenges that include;

- The high prevalence of substance abuse in clients which exacerbates client problems.
- The recruitment of foster and adoptive homes for older youth ages 12 to 18 years old.
- The retention of child protective services specialists and supervisors.

Despite these challenges, the Division has implemented and will continue to implement process improvements to ensure child welfare staff have the tools they need to do their jobs effectively. The Division continues to work in partnership with the federal government to meet the federal Child and Family Service Review (CFSR) standards to improve outcomes for the children and families it serves.

The CARE Team Report identified a number of capacity and management challenges that exist in the Division due to current workloads exceeding caseload standards and the lack of sufficiently documented procedures. The Care Team report also provided numerous strategic recommendations to address systemic process failures and enhance transparency. The full Care Team Report can be found at <http://www.azgovernor.gov/dms/upload/CARETEAMREPORT.pdf>.

Semi-Annual Comparisons

	Oct 2009 through Mar 2010	Apr 2010 through Sep 2010	Oct 2010 through Mar 2011	Apr 2011 through Sep 2011	Oct 2011 through Mar 2012	Apr 2012 through Sep 2012	Oct 2012 through Mar 2013	Apr 2013 through Sep 2013
Number of Reports Received	17,110	17,068	17,586	19,666	20,466	21,625	22,161	22,032
Number of Reports Substantiated ¹	2,122	2,264	2,274	2,522	2,748	2,809	2,588	1,456
Substantiation Rate	13%	13%	13%	15%	14%	14%	13%	7%
Number of Reports Investigated & Closed	8,149	8,403	8,481	9,953	10,345	9,168	10,923	11,212
Number of Reports Responded to	16,602	16,853	17,378	19,245	19,274	20,413	20,253	20,122
Number of new removals	3,936	4,010	3,978	4,531	4,968	5,716	5,101	5,702
Number of new removals with Voluntary under 18	125	135	192	155	150	116	97	118
Number of Children in Out-of-Home Care on the Last Day of Reporting Period	10,207	10,514	10,707	11,535	12,453	14,111	14,314	15,037
Number of Children in Shelter for More than 21 Days	423	471	534	842	713	764	792	824
Number and Percentage of Children Receiving Visitation In the Last Month of Reporting Period	8,973 (87.9%)	8,930 (84.9%)	8,838 (82.5%)	9,363 (81.2%)	9,728 (78.1%)	10,404 (73.7%)	12,101 (84.5%)	12,997 (86.4%)
Number and Percentage of Children not Receiving Visitation	1,234 (12.1%)	1,584 (15.1%)	1,869 (17.5%)	2,172 (18.8%)	2,725 (21.9%)	3,707 (26.3%)	2,213 (15.5%)	2,040 (13.6%)
Number and Percentage of Parents Receiving Visitation	1,578 (64.8%)	1,128 (56.4%)	1,144 (57.3%)	994 (54.5%)	1,081 (57.1%)	1,017 (51.2%)	1,058 (50.9%)	1,157 (52.4%)
Number of Licensed Foster Homes	3,932	3,747	3,595	3,496	3,480	3,748	3,516	3,900 ²
Number of Foster Home Spaces Available to DCYF	8,789	8,693	8,483	8,191	8,572	7,716	8,579	8,573
Number of New Foster Homes	560	718	524	582	663	999	722	717
Number of Foster Homes Closed	582	903	676	681	679	747	740	715
Number and Percentage of Foster Homes Receiving Visitation In the Last Qtr. Of Reporting Period	3,240 (82.4%)	3,102 (82.8%)	3,182 (88.5%)	3,121 (89.3%)	3,132 (79.9%)	3,095 (82.6%)	3,316 (92.7)	3,491 (89.5%)
Number and Percentage of Foster Homes not Receiving Visitation	692 (17.6)	645 (17.2%)	413 (11.5%)	375 (10.7%)	790 (20.1)	653 (17.4%)	260 (7.3%)	409 (10.5%)
Number of Children Leaving DES Custody	3,650	3,559	3,649	3,574	3,826	3,923	4,668	4,805
Number of Children With a Case Plan Goal of Adoption	2,411	2,450	2,426	2,561	2,663	2,719	2,852	3,311
Number of Children With a Finalized Adoption	1,034	991	1,186	1,078	1,224	1,025	1,270	1,215

¹ Since the appeals process delays the substantiation of reports, revisions to the substantiation rate for the prior reporting period will occur with every semi-annual report produced.

² The number of available foster homes includes homes reported by the Department's Home Recruitment, Study and Supervision contractors along with foster homes utilized for appropriate children in coordination with the Division of Developmental Disabilities.

Reports of Child Abuse & Neglect

Child abuse and neglect are defined in A.R.S. §8-201 and A.R.S. §13-3623 (A). These definitions provide the major categories in this report.

Between April 1, 2013 and September 30, 2013, there were 22,032 incoming communications to the Child Abuse Hotline that met the criteria for a report of abuse or neglect. Of these, 257 were within the jurisdiction of military or tribal governments and were referred to those jurisdictions. Compared to one year ago, there has been a 1.9% increase in reports received by the CPS Hotline meeting the criteria of a report of abuse or neglect.

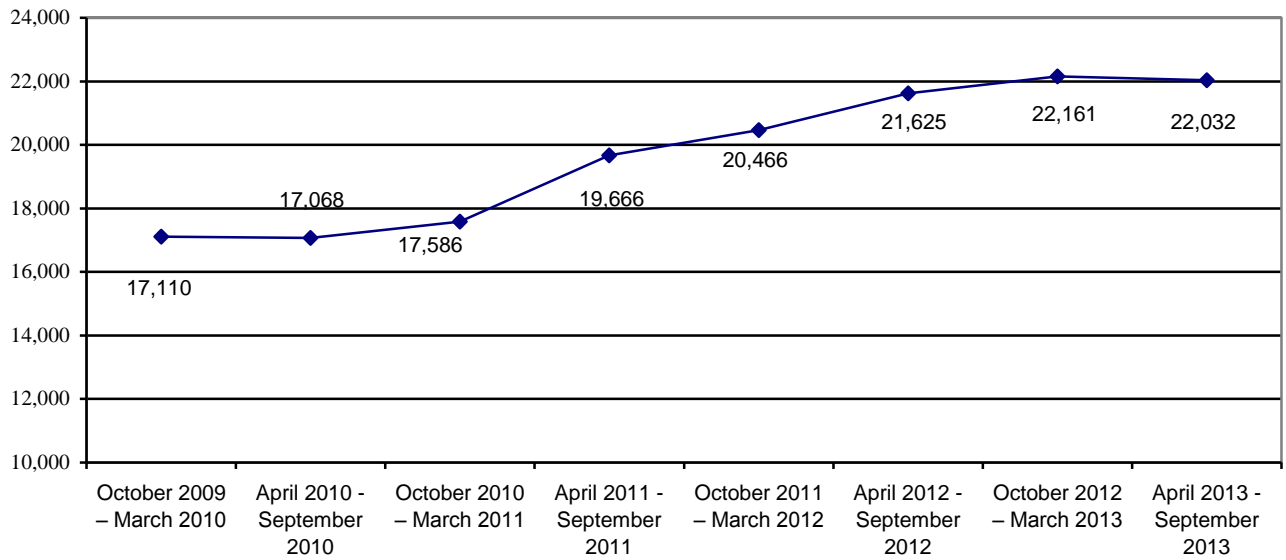
Table 1 shows the number of reports received by the Department by category of maltreatment for the current and past reporting periods. One consistent trend is the increase in the proportion of reports that meet the criteria of neglect. To address this trend, the Department is working internally and with community partners to configure services so that the availability of services with a preventative focus is increased.

**TABLE 1
REPORTS BY REPORTING PERIOD AND TYPE OF MALTREATMENT**

	Neglect	Physical Abuse	Sexual Abuse	Emotional Abuse	Total
October 2009 – March 2010	10,127 59.2%	5,866 34.3%	930 5.4%	187 1.1%	17,110 100.0%
April 2010 – September 2010	10,561 61.8%	5,515 32.3%	812 4.8%	180 1.1%	17,068 100.0%
October 2010 – March 2011	10,960 62.3%	5,755 32.7%	712 4.1%	159 0.9%	17,586 100.0%
April 2011 – September 2011	13,158 66.8%	5,615 28.6%	739 3.8%	154 0.8%	19,666 100.0%
October 2011 – March 2012	13,369 65.3%	6,198 30.3%	739 3.6%	160 0.8%	20,466 100.0%
April 2012 – September 2012	14,722 68.1%	5,974 27.6%	764 3.5%	165 0.8%	21,625 100.0%
October 2012 – March 2013	14,916 67.2%	6,263 28.3%	815 3.7%	167 0.8%	22,161 100.0%
April 2013 – September 2013	15,560 70.6%	5,607 25.5%	731 3.3%	134 0.6%	22,032 100.0%

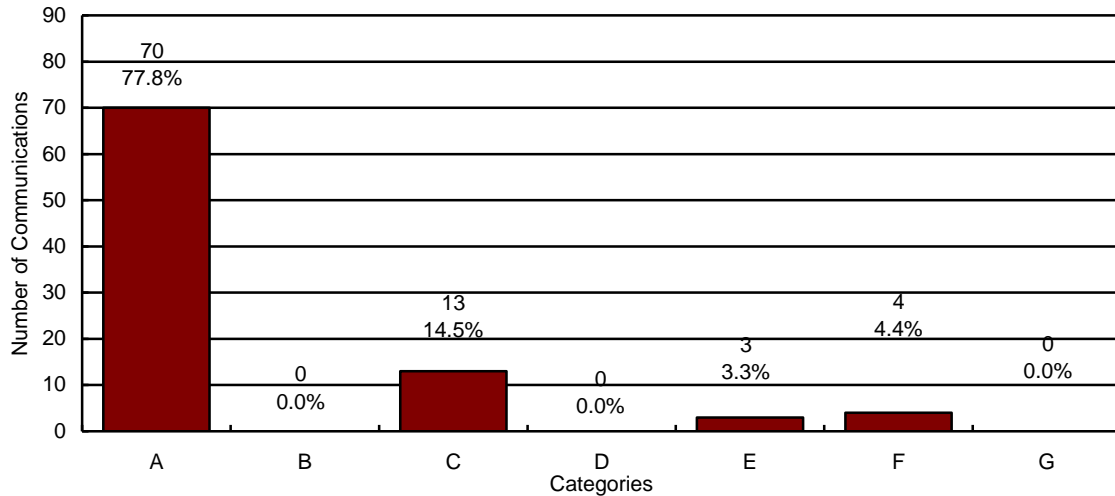
Chart 1 illustrates that the number of CPS reports received by the CPS Hotline has increased by 407 reports over the same reporting period last year. The chart below also shows that the significant upward trend in reports received by the CPS Hotline began at the end of FY 2011. This in turn resulted in more children entering out-of-home care (see Chart 18 for information on the out-of-home population).

**CHART 1
REPORTS OF CHILD ABUSE AND NEGLECT BY REPORTING PERIOD**



The Child Abuse Hotline received a total of 81,017 calls during the reporting period. Of those, 64,583 were answered by a hotline specialist. The 64,583 yielded 42,551 communications and 22,032 reports of abuse and neglect. Communications do not meet the statutory criteria of a report of maltreatment. Of the 42,551 communications, a subset of 9,483 were used as a basis for selecting a random sample to represent the types of calls that do not get classified as reports of abuse & neglect. This random sample is contained in the chart below.

CHART 2
SAMPLE OF COMMUNICATIONS TO THE CHILD ABUSE HOTLINE THAT DO NOT MEET THE STATUTORY REQUIREMENTS OF A REPORT OF ABUSE OR NEGLECT



N= 90

- A = Concern Only/No Allegation of Child Abuse or Neglect**
- B = Out of CPS Jurisdiction**
- C = Call Appropriate for Law Enforcement Jurisdiction³**
- D = Non-Caretaker Neglect/Child No Longer at Risk**
- E = Insufficient Information**
- F = Truancy/Custody Issues**
- G = Current Case Questions or Referrals**

All communications that do not meet the statutory requirements for a field investigation of abuse or neglect are reviewed within 48 hours by DES quality assurance staff.

³ The category “Call Appropriate for Law Enforcement Jurisdiction” refers to a situation where the alleged perpetrator is not a parent or primary caretaker and the allegations, if true, would constitute a crime.

Chart 3 below provides information on the number of reports that met each of the CPS Hotline priority classifications in the current and past reporting periods. In Table 2 and Table 3, data on total reports by priority is shown by county for the current and previous reporting periods. The priority determinations are made by personnel at the child abuse hotline after the review of multiple factors, however, below is a high level summary of each response time criteria.

PRIORITY 1: Present danger refers to an immediate, significant and clearly observable family condition present now which has resulted in or is likely to result in serious or severe harm requiring an immediate initial response.

PRIORITY 2: Impending danger may not be occurring in the present but is likely to occur in the immediate to near future and will likely result in serious or severe harm to a child.

PRIORITY 3: Reports that do not rise to the level of present or impending danger, but there is an incident of abuse or neglect that has happened in the past 30 days. This includes a current minor injury to the child.

PRIORITY 4: Reports that do not rise to the level of present or impending danger, but 1) there is an incident of abuse or neglect that happened more than 30 days ago, or 2) the date of last occurrence is unknown and there is no current physical indicator of maltreatment, or 3) there is UNREASONABLE risk of harm to the child’s health or welfare.

**CHART 3
NUMBER OF REPORTS RECEIVED BY PRIORITY**

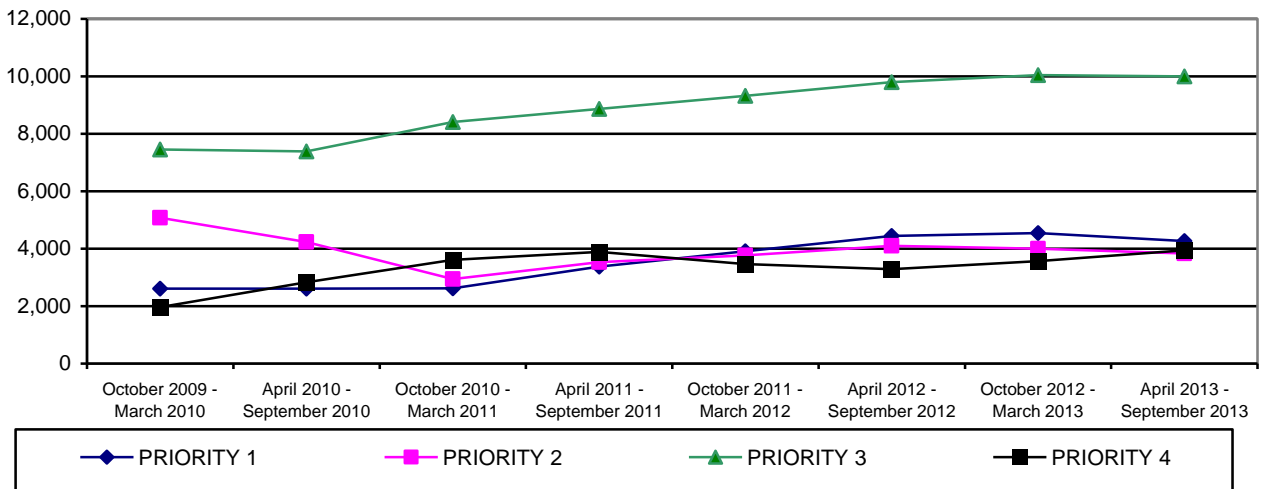


TABLE 2
NUMBER OF REPORTS RECEIVED BY PRIORITY AND COUNTY FOR PERIOD OF
APRIL 1, 2013 THROUGH SEPTEMBER 30, 2013

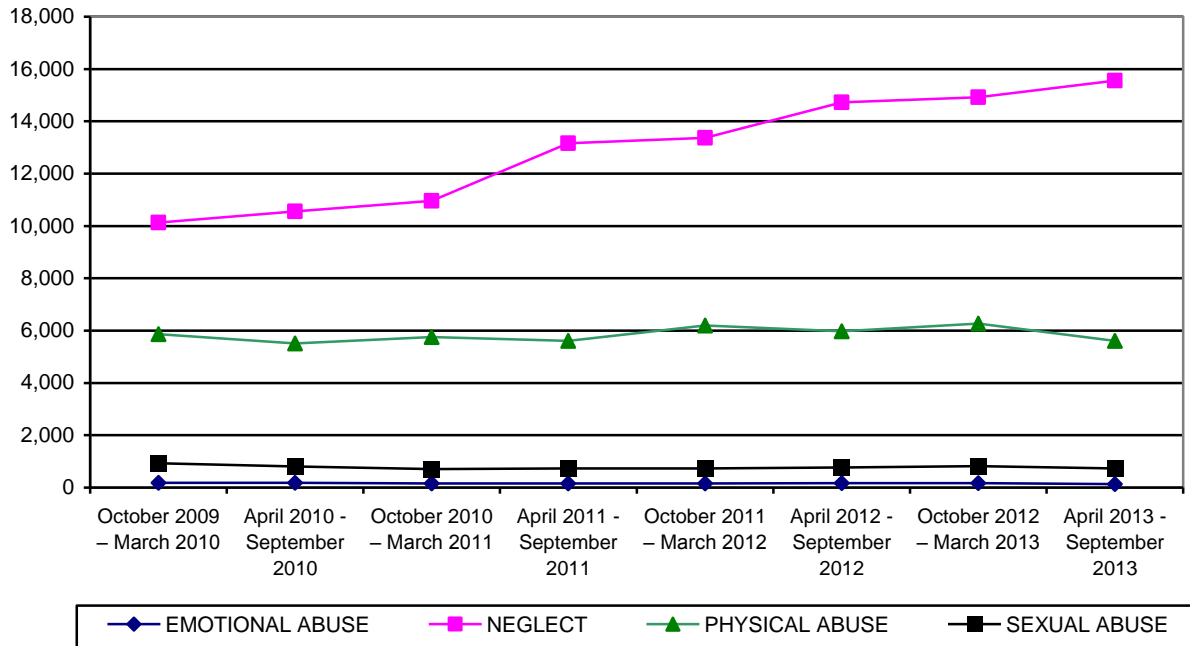
COUNTY	PRIORITY 1	PRIORITY 2	PRIORITY 3	PRIORITY 4	TOTAL	% OF TOTAL
APACHE	8	14	29	14	65	0.3%
COCHISE	83	69	165	59	376	1.7%
COCONINO	80	59	182	72	393	1.8%
GILA	37	49	83	35	204	0.9%
GRAHAM	22	27	75	20	144	0.7%
GREENLEE	4	4	16	2	26	0.1%
LA PAZ	10	11	36	7	64	0.3%
MARICOPA	2,651	2,215	5,671	2,387	12,924	58.6%
MOHAVE	153	145	316	104	718	3.3%
NAVAJO	57	61	156	73	347	1.6%
PIMA	675	709	1,942	655	3,981	18.0%
PINAL	261	265	771	309	1,606	7.3%
SANTA CRUZ	17	11	40	19	87	0.4%
YAVAPAI	102	109	313	111	635	2.9%
YUMA	105	80	204	73	462	2.1%
STATEWIDE	4,265	3,828	9,999	3,940	22,032	100.0%
% OF TOTAL	19.4%	17.4%	45.3%	17.9%	100.0%	

TABLE 3
NUMBER OF REPORTS RECEIVED BY PRIORITY AND COUNTY FOR PERIOD OF
OCTOBER 1, 2012 THROUGH MARCH 31, 2013

COUNTY	PRIORITY 1	PRIORITY 2	PRIORITY 3	PRIORITY 4	TOTAL	% OF TOTAL
APACHE	12	12	44	20	88	0.4%
COCHISE	86	69	190	67	412	1.9%
COCONINO	102	71	186	72	431	1.9%
GILA	50	43	90	15	198	0.9%
GRAHAM	38	19	51	16	124	0.6%
GREENLEE	2	7	13	4	26	0.1%
LA PAZ	13	15	35	6	69	0.3%
MARICOPA	2,742	2,344	5,814	2,242	13,142	59.3%
MOHAVE	148	118	309	73	648	2.9%
NAVAJO	60	76	153	43	332	1.5%
PIMA	752	774	1,942	608	4,076	18.4%
PINAL	298	265	603	199	1,365	6.2%
SANTA CRUZ	16	22	64	17	119	0.5%
YAVAPAI	119	101	301	125	646	2.9%
YUMA	107	64	249	65	485	2.2%
STATEWIDE	4,545	4,000	10,044	3,572	22,161	100.0%
% OF TOTAL	20.5%	18.1%	45.3%	16.1%	100.0%	

The following chart and tables provide the number of reports categorized by type of maltreatment. The total number of reports received by type of maltreatment is displayed in Chart 4. In Table 4 and Table 5 data on the total reports by type of maltreatment is shown by county for the current and previous reporting periods.

**CHART 4
NUMBER OF REPORTS RECEIVED BY TYPE OF MALTREATMENT**



**TABLE 4
NUMBER OF REPORTS RECEIVED BY TYPE OF MALTREATMENT AND COUNTY FOR PERIOD OF APRIL 1, 2013 THROUGH SEPTEMBER 30, 2013**

COUNTY	EMOTIONAL ABUSE	NEGLECT	PHYSICAL ABUSE	SEXUAL ABUSE	TOTAL	% OF TOTAL
APACHE	0	47	17	1	65	0.3%
COCHISE	2	278	87	9	376	1.7%
COCONINO	2	274	97	20	393	1.8%
GILA	0	160	39	5	204	0.9%
GRAHAM	1	94	42	7	144	0.7%
GREENLEE	0	15	10	1	26	0.1%
LA PAZ	1	45	14	4	64	0.3%
MARICOPA	76	8,975	3,394	479	12,924	58.6%
MOHAVE	5	523	170	20	718	3.3%
NAVAJO	3	258	71	15	347	1.6%
PIMA	29	2,871	995	86	3,981	18.0%
PINAL	8	1,138	412	48	1,606	7.3%
SANTA CRUZ	0	59	26	2	87	0.4%
YAVAPAI	6	480	131	18	635	2.9%
YUMA	1	343	102	16	462	2.1%
STATEWIDE	134	15,560	5,607	731	22,032	100.0%
% OF TOTAL	0.6%	70.6%	25.5%	3.3%	100.0%	

**TABLE 5
NUMBER OF REPORTS RECEIVED BY TYPE OF MALTREATMENT AND COUNTY FOR
PERIOD OF OCTOBER 1, 2012 THROUGH MARCH 31, 2013**

COUNTY	EMOTIONAL ABUSE	NEGLECT	PHYSICAL ABUSE	SEXUAL ABUSE	TOTAL	% OF TOTAL
APACHE	0	58	24	6	88	0.4%
COCHISE	5	268	122	17	412	1.9%
COCONINO	2	281	134	14	431	1.9%
GILA	2	141	50	5	198	0.9%
GRAHAM	0	85	34	5	124	0.6%
GREENLEE	0	14	10	2	26	0.1%
LA PAZ	0	54	14	1	69	0.3%
MARICOPA	91	8,727	3,808	516	13,142	59.3%
MOHAVE	4	455	170	19	648	2.9%
NAVAJO	0	226	99	7	332	1.5%
PIMA	35	2,827	1,110	104	4,076	18.4%
PINAL	11	915	374	65	1,365	6.2%
SANTA CRUZ	4	81	32	2	119	0.5%
YAVAPAI	9	444	163	30	646	2.9%
YUMA	4	340	119	22	485	2.2%
STATEWIDE	167	14,916	6,263	815	22,161	100.0%
% OF TOTAL	0.8%	67.2%	28.3%	3.7%	100.0%	

ASSIGNMENT OF INVESTIGATIONS

During the current reporting period, there were 22,032 calls to the CPS Hotline that met the statutory criteria for a report. Of those, 257 reports fell within the jurisdiction of military or tribal governments. The assignment of the remaining 21,775 reports for investigation was as follows:

- 1,653 reports were initially designated as NI (all have now been assigned for investigation)
- 20,122 reports were assigned to be investigated by CPS.

The following tables and charts in this section provide statewide and county level information on these reports assigned to CPS. Of these, CPS completed 11,212 (55.7%) of their assigned investigations. Those not completed remain open when the investigation is still in process, when the CPS specialist is waiting for the results of a law enforcement investigation and/or receipt of records that impact the investigation finding, or when the investigation has been completed but is awaiting supervisory review and approval.

**CHART 5
NUMBER OF REPORTS ASSIGNED FOR INVESTIGATION BY PRIORITY AND REPORTING PERIOD**

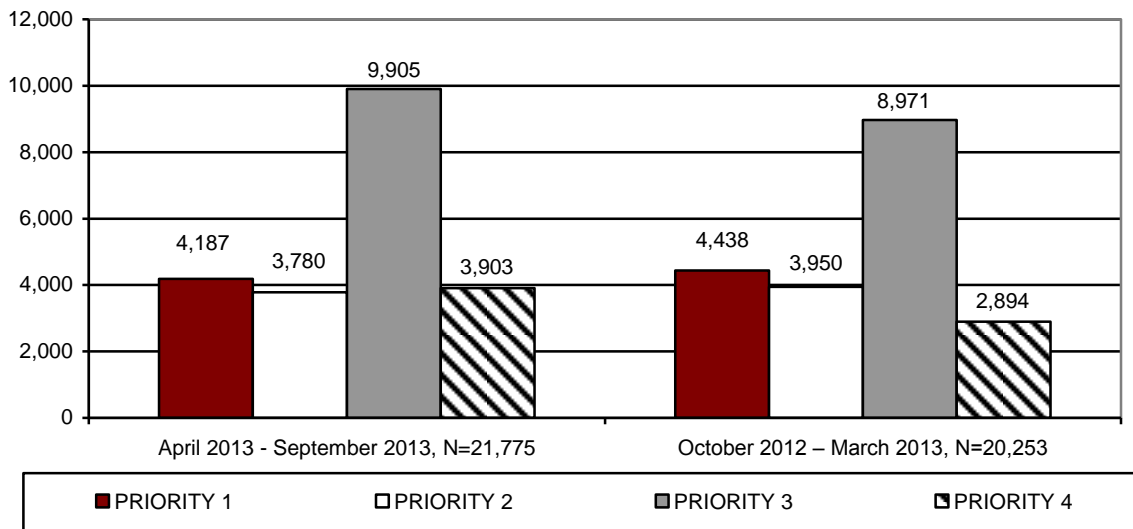


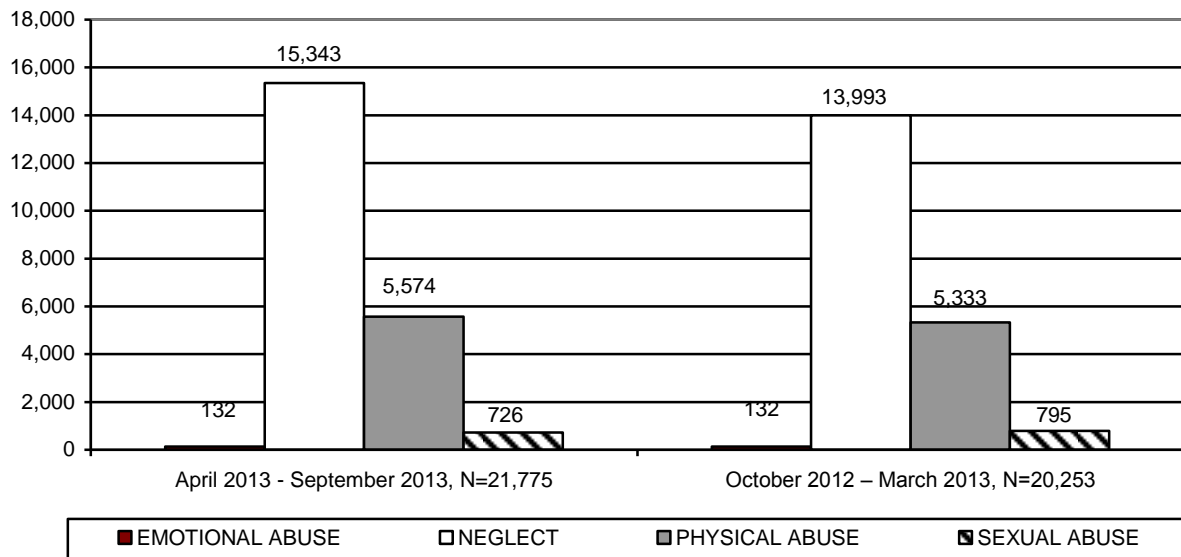
TABLE 6
NUMBER OF REPORTS ASSIGNED FOR INVESTIGATION BY PRIORITY AND COUNTY
FOR PERIOD OF APRIL 1, 2013 THROUGH SEPTEMBER 30, 2013

COUNTY	PRIORITY 1	PRIORITY 2	PRIORITY 3	PRIORITY 4	TOTAL	% OF TOTAL
APACHE	4	10	21	12	47	0.2%
COCHISE	82	69	164	59	374	1.7%
COCONINO	66	51	166	60	343	1.6%
GILA	33	41	77	33	184	0.9%
GRAHAM	20	27	73	19	139	0.6%
GREENLEE	4	4	16	2	26	0.1%
LA PAZ	9	10	28	6	53	0.2%
MARICOPA	2,640	2,207	5,660	2,384	12,891	59.2%
MOHAVE	146	142	316	104	708	3.3%
NAVAJO	44	54	139	63	300	1.4%
PIMA	673	704	1,934	653	3,964	18.2%
PINAL	248	261	756	306	1,571	7.2%
SANTA CRUZ	17	11	40	19	87	0.4%
YAVAPAI	99	109	311	110	629	2.9%
YUMA	102	80	204	73	459	2.1%
STATEWIDE	4,187	3,780	9,905	3,903	21,775	100.0%
% OF TOTAL	19.2%	17.4%	45.5%	17.9%	100.0%	

TABLE 7
NUMBER OF REPORTS ASSIGNED FOR INVESTIGATION BY PRIORITY AND COUNTY
FOR PERIOD OF OCTOBER 1, 2012 THROUGH MARCH 31, 2013

COUNTY	PRIORITY 1	PRIORITY 2	PRIORITY 3	PRIORITY 4	TOTAL	% OF TOTAL
APACHE	9	8	36	19	72	0.4%
COCHISE	86	69	190	67	412	2.0%
COCONINO	74	63	163	56	356	1.8%
GILA	43	38	83	14	178	0.9%
GRAHAM	37	19	48	16	120	0.6%
GREENLEE	2	7	13	4	26	0.1%
LA PAZ	12	10	29	4	55	0.3%
MARICOPA	2,726	2,339	5,085	1,740	11,890	58.6%
MOHAVE	142	115	305	71	633	3.1%
NAVAJO	40	67	132	37	276	1.4%
PIMA	749	771	1,758	493	3,771	18.6%
PINAL	283	258	524	167	1,232	6.1%
SANTA CRUZ	16	22	64	17	119	0.6%
YAVAPAI	117	100	294	124	635	3.1%
YUMA	102	64	247	65	478	2.4%
STATEWIDE	4,438	3,950	8,971	2,894	20,253	100.0%
% OF TOTAL	21.9%	19.5%	44.3%	14.3%	100.0%	

**CHART 6
NUMBER OF REPORTS ASSIGNED FOR INVESTIGATION BY TYPE OF MALTREATMENT
AND REPORTING PERIOD**



**TABLE 8
NUMBER OF REPORTS ASSIGNED FOR INVESTIGATION BY TYPE OF MALTREATMENT
BY COUNTY FOR PERIOD OF APRIL 1, 2013 THROUGH SEPTEMBER 30, 2013**

COUNTY	EMOTIONAL ABUSE	NEGLECT	PHYSICAL ABUSE	SEXUAL ABUSE	TOTAL	% OF TOTAL
APACHE	0	36	10	1	47	0.2%
COCHISE	2	276	87	9	374	1.7%
COCONINO	1	233	92	17	343	1.6%
GILA	0	143	36	5	184	0.9%
GRAHAM	1	91	40	7	139	0.6%
GREENLEE	0	15	10	1	26	0.1%
LA PAZ	1	36	12	4	53	0.2%
MARICOPA	75	8,945	3,393	478	12,891	59.2%
MOHAVE	5	513	170	20	708	3.3%
NAVAJO	3	212	70	15	300	1.4%
PIMA	29	2,857	992	86	3,964	18.2%
PINAL	8	1,111	405	47	1,571	7.2%
SANTA CRUZ	0	59	26	2	87	0.4%
YAVAPAI	6	475	130	18	629	2.9%
YUMA	1	341	101	16	459	2.1%
STATEWIDE	132	15,343	5,574	726	21,775	100.0%
% OF TOTAL	0.6%	70.5%	25.6%	3.3%	100.0%	

**TABLE 9
NUMBER OF REPORTS ASSIGNED FOR INVESTIGATION BY TYPE OF MALTREATMENT
BY COUNTY FOR PERIOD OF OCTOBER 1, 2012 THROUGH MARCH 31, 2013**

COUNTY	EMOTIONAL ABUSE	NEGLECT	PHYSICAL ABUSE	SEXUAL ABUSE	TOTAL	% OF TOTAL
APACHE	0	48	19	5	72	0.4%
COCHISE	5	268	122	17	412	2.0%
COCONINO	2	230	112	12	356	1.8%
GILA	2	124	48	4	178	0.9%
GRAHAM	0	82	33	5	120	0.6%
GREENLEE	0	14	10	2	26	0.1%
LA PAZ	0	45	10	0	55	0.3%
MARICOPA	64	8,186	3,136	504	11,890	58.6%
MOHAVE	4	442	168	19	633	3.1%
NAVAJO	0	185	84	7	276	1.4%
PIMA	28	2,679	960	104	3,771	18.6%
PINAL	10	843	317	62	1,232	6.1%
SANTA CRUZ	4	81	32	2	119	0.6%
YAVAPAI	9	433	163	30	635	3.1%
YUMA	4	333	119	22	478	2.4%
STATEWIDE	132	13,993	5,333	795	20,253	100.0%
% OF TOTAL	0.7%	69.1%	26.3%	3.9%	100.0%	

INVESTIGATIONS OF CHILD ABUSE AND NEGLECT

During the April 2013 to September 2013 reporting period, there were 1,653 reports of abuse or neglect that were inappropriately designated as NI and not investigated. When this practice was identified, the Governor established the CARE Team to oversee a full investigation of all cases of abuse and neglect that had been previously coded NI. At the end of January, 100% of the cases initially designated NI had been assigned to an investigator and more than 60% of the NI cases were actively being worked. The Division no longer utilizes the “not investigated” practice and all reports are assigned for field investigation. The CARE Team will continue to provide updates on the status of all NI cases. For updated information on the number of NI cases that have received a response, see the CARE Team website at <https://azcareteam.az.gov/node?page=2>.

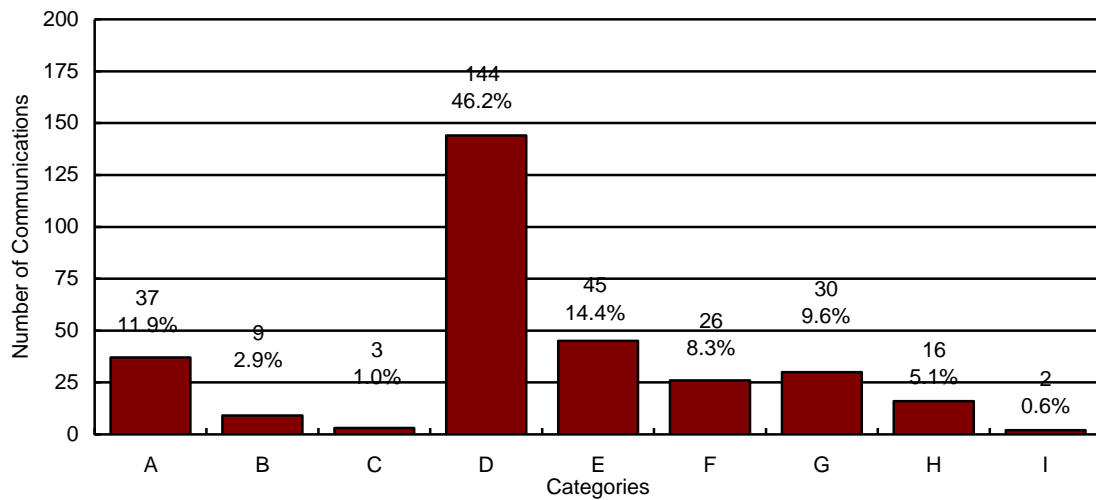
In current and prior reporting periods, cases that the Department designated as NI can be found in Table 10. However, in future reporting periods, Table 10 will exclusively reflect cases that have not yet received an investigative response at the time of the report publication, as the NI process has been discontinued.

TABLE 10
NUMBER OF REPORTS NOT RESPONDED TO BY PRIORITY AND COUNTY FOR PERIOD
OF APRIL 1, 2013 THROUGH SEPTEMBER 30, 2013

COUNTY	PRIORITY 1	PRIORITY 2	PRIORITY 3	PRIORITY 4	TOTAL	% OF TOTAL
APACHE	0	0	0	0	0	0.0%
COCHISE	0	0	0	0	0	0.0%
COCONINO	0	0	0	0	0	0.0%
GILA	0	0	0	0	0	0.0%
GRAHAM	0	0	0	0	0	0.0%
GREENLEE	0	0	0	0	0	0.0%
LA PAZ	0	0	0	0	0	0.0%
MARICOPA	0	0	689	483	1,172	70.8%
MOHAVE	0	0	0	0	0	0.0%
NAVAJO	0	0	0	0	0	0.0%
PIMA	0	0	242	141	383	23.2%
PINAL	0	0	47	50	97	5.9%
SANTA CRUZ	0	0	0	0	0	0.0%
YAVAPAI	0	0	0	0	0	0.0%
YUMA	0	0	1	0	1	0.1%
STATEWIDE	0	0	979	674	1,653	100.0%
% OF TOTAL	0.0%	0.0%	59.2%	40.8%	100.0%	

By statute, a random sample of reports that did not receive a CPS investigative response in each reporting period is required. In addition, short descriptions of these reports are also required. From the 1,653 reports that were designated as NI, a random sample of 312 reports were reviewed. Chart 7 displays the 312 reports in brief descriptive categories.

CHART 7
NUMBER OF REPORTS NOT RESPONDED TO BY CATEGORY FOR THE PERIOD OF
APRIL 1, 2013 THROUGH SEPTEMBER 30, 2013



N= 312

- A = Adolescent, Past Abuse, No Current Injuries**
- B = Inadequate Housekeeping Standards**
- C = Inappropriate Vehicle Operation**
- D = No Specific Allegations**
- E = Past Abuse no current injuries**
- F = Adolescent, current minor injuries**
- G = Non-adolescent, current minor injuries**
- H = Poor parenting skills**
- I = Left with inappropriate caregiver**

CHART 8
NUMBER OF REPORTS ASSIGNED FOR INVESTIGATION BY PRIORITY AND
REPORTING PERIOD FOR REPORTS OPEN FOR INVESTIGATION

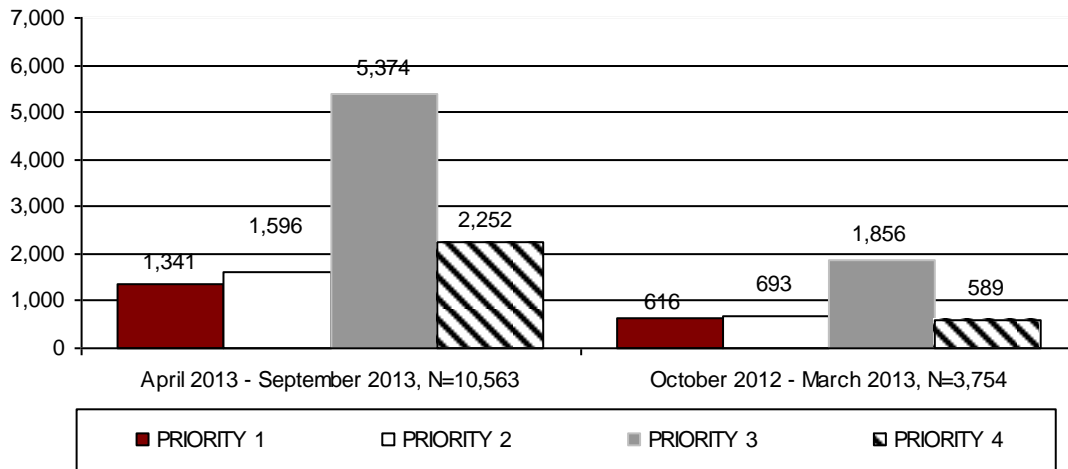


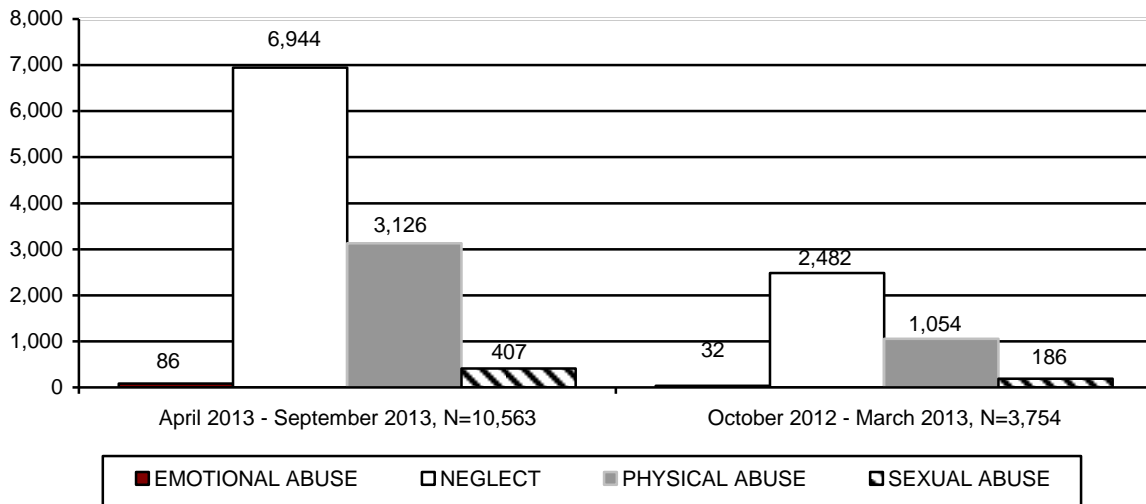
TABLE 11
NUMBER OF REPORTS BY PRIORITY AND COUNTY FOR REPORTS OPEN FOR
INVESTIGATION FOR PERIOD OF APRIL 1, 2013 THROUGH SEPTEMBER 30, 2013

COUNTY	PRIORITY 1	PRIORITY 2	PRIORITY 3	PRIORITY 4	TOTAL	% OF TOTAL
APACHE	0	1	0	0	1	<0.1%
COCHISE	43	44	110	34	231	2.2%
COCONINO	3	6	14	3	26	0.3%
GILA	15	20	43	17	95	0.9%
GRAHAM	12	7	33	9	61	0.6%
GREENLEE	2	1	4	1	8	0.1%
LA PAZ	2	2	6	0	10	0.1%
MARICOPA	848	958	3,106	1,417	6,329	59.8%
MOHAVE	31	28	90	29	178	1.7%
NAVAJO	10	20	57	27	114	1.1%
PIMA	204	308	1,194	425	2,131	20.1%
PINAL	107	125	470	194	896	8.5%
SANTA CRUZ	10	10	28	11	59	0.6%
YAVAPAI	28	30	114	38	210	2.0%
YUMA	26	36	105	47	214	2.0%
STATEWIDE	1,341	1,596	5,374	2,252	10,563	100.0%
% OF TOTAL	12.7%	15.1%	50.9%	21.3%	100.0%	

TABLE 12
NUMBER OF REPORTS BY PRIORITY AND COUNTY FOR REPORTS OPEN FOR
INVESTIGATION FOR PERIOD OF OCTOBER 1, 2012 THROUGH MARCH 31, 2013

COUNTY	PRIORITY 1	PRIORITY 2	PRIORITY 3	PRIORITY 4	TOTAL	% OF TOTAL
APACHE	1	0	0	1	2	0.1%
COCHISE	24	10	36	11	81	2.2%
COCONINO	0	0	0	0	0	0.0%
GILA	3	4	6	4	17	0.5%
GRAHAM	1	0	4	1	6	0.2%
GREENLEE	0	2	0	2	4	0.1%
LA PAZ	0	0	0	0	0	0.0%
MARICOPA	331	383	1,037	348	2,099	55.8%
MOHAVE	0	1	3	1	5	0.1%
NAVAJO	0	3	8	2	13	0.4%
PIMA	145	186	515	151	997	26.5%
PINAL	98	94	198	55	445	11.8%
SANTA CRUZ	3	3	20	5	31	0.8%
YAVAPAI	1	3	5	5	14	0.4%
YUMA	9	4	24	3	40	1.1%
STATEWIDE	616	693	1,856	589	3,754	100.0%
% OF TOTAL	16.4%	18.5%	49.4%	15.7%	100.0%	

**CHART 9
NUMBER OF REPORTS ASSIGNED FOR INVESTIGATION BY TYPE OF MALTREATMENT
FOR REPORTS OPEN FOR INVESTIGATION**



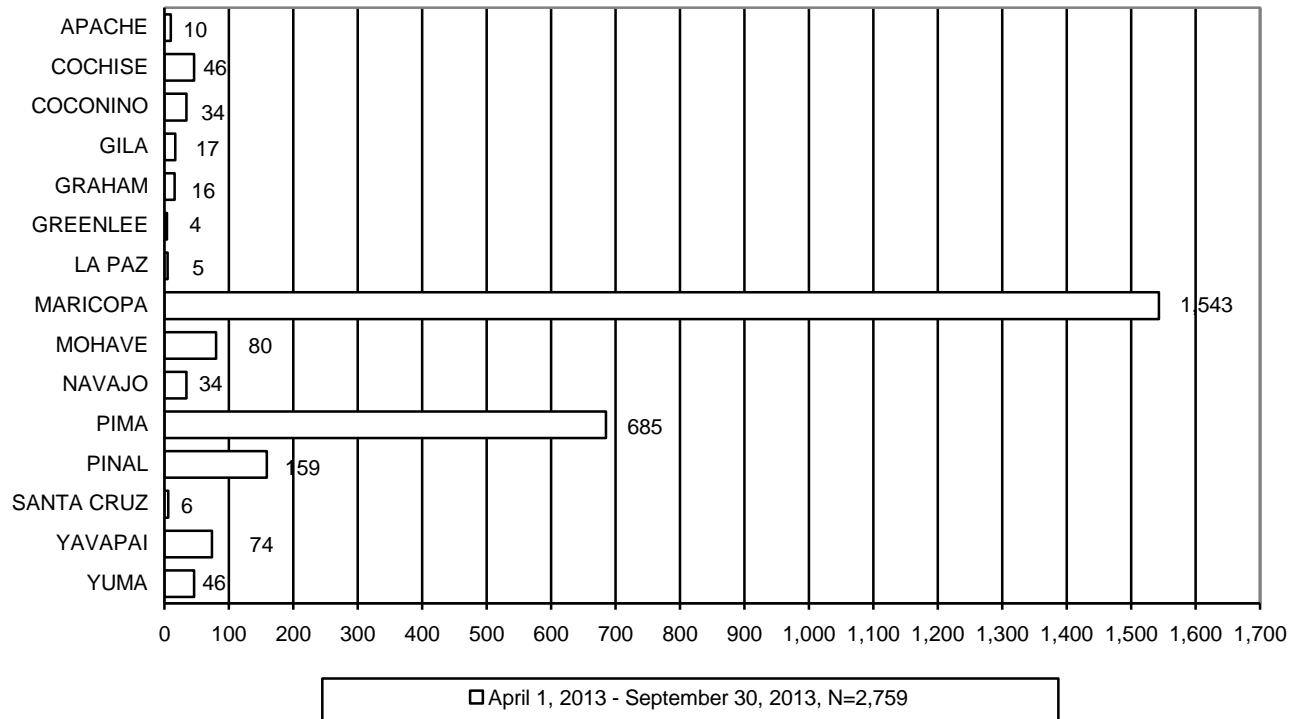
**TABLE 13
NUMBER OF REPORTS BY TYPE OF MALTREATMENT AND COUNTY FOR REPORTS
OPEN FOR INVESTIGATION FOR PERIOD OF
APRIL 1, 2013 THROUGH SEPTEMBER 30, 2013**

COUNTY	EMOTIONAL ABUSE	NEGLECT	PHYSICAL ABUSE	SEXUAL ABUSE	TOTAL	% OF TOTAL
APACHE	0	1	0	0	1	<0.1%
COCHISE	1	161	63	6	231	2.2%
COCONINO	0	18	6	2	26	0.3%
GILA	0	72	19	4	95	0.9%
GRAHAM	1	41	15	4	61	0.6%
GREENLEE	0	5	3	0	8	0.1%
LA PAZ	0	8	2	0	10	0.1%
MARICOPA	52	4,062	1,945	270	6,329	59.8%
MOHAVE	1	119	48	10	178	1.7%
NAVAJO	2	74	33	5	114	1.1%
PIMA	18	1,434	622	57	2,131	20.1%
PINAL	8	611	246	31	896	8.5%
SANTA CRUZ	0	39	19	1	59	0.6%
YAVAPAI	2	160	41	7	210	2.0%
YUMA	1	139	64	10	214	2.0%
STATEWIDE	86	6,944	3,126	407	10,563	100.0%
% OF TOTAL	0.8%	65.7%	29.6%	3.9%	100.0%	

TABLE 14
NUMBER OF REPORTS BY TYPE OF MALTREATMENT AND COUNTY FOR REPORTS
OPEN FOR INVESTIGATION FOR PERIOD OF
OCTOBER 1, 2012 THROUGH MARCH 31, 2013

COUNTY	EMOTIONAL ABUSE	NEGLECT	PHYSICAL ABUSE	SEXUAL ABUSE	TOTAL	% OF TOTAL
APACHE	0	1	0	1	2	0.1%
COCHISE	1	55	20	5	81	2.2%
COCONINO	0	0	0	0	0	0.0%
GILA	0	13	4	0	17	0.5%
GRAHAM	0	5	1	0	6	0.2%
GREENLEE	0	2	2	0	4	0.1%
LA PAZ	0	0	0	0	0	0.0%
MARICOPA	11	1,335	636	117	2,099	55.8%
MOHAVE	0	5	0	0	5	0.1%
NAVAJO	0	10	3	0	13	0.4%
PIMA	9	706	249	33	997	26.5%
PINAL	5	295	116	29	445	11.8%
SANTA CRUZ	3	20	8	0	31	0.8%
YAVAPAI	2	11	1	0	14	0.4%
YUMA	1	24	14	1	40	1.1%
STATEWIDE	32	2,482	1,054	186	3,754	100.0%
% OF TOTAL	0.9%	66.0%	28.1%	5.0%	100.0%	

**CHART 10
NUMBER OF REPORTS ASSIGNED FOR INVESTIGATION WHERE A REMOVAL OCCURRED**



**TABLE 15
NUMBER OF REPORTS ASSIGNED FOR INVESTIGATION BY COUNTY WHERE A REMOVAL OCCURRED FOR THE PERIOD APRIL 1, 2013 THROUGH SEPTEMBER 30, 2013**

COUNTY	NUMBER OF REPORTS ASSIGNED	NUMBER OF REPORTS ASSIGNED WITH A REMOVAL	% OF REPORTS WHERE A CHILD WAS PLACED IN OUT-OF-HOME CARE
APACHE	47	10	21.3%
COCHISE	374	46	12.3%
COCONINO	343	34	9.9%
GILA	184	17	9.2%
GRAHAM	139	16	11.5%
GREENLEE	26	4	15.4%
LA PAZ	53	5	9.4%
MARICOPA	12,891	1,543	12.0%
MOHAVE	708	80	11.3%
NAVAJO	300	34	11.3%
PIMA	3,964	685	17.3%
PINAL	1,571	159	10.1%
SANTA CRUZ	87	6	6.9%
YAVAPAI	629	74	11.8%
YUMA	459	46	10.0%
STATEWIDE	21,775	2,759	12.7%

TABLE 16
NUMBER OF REPORTS ASSIGNED FOR INVESTIGATION BY COUNTY WHERE A
REMOVAL OCCURRED FOR THE PERIOD OCTOBER 1, 2012 THROUGH MARCH 31, 2013

COUNTY	NUMBER OF REPORTS ASSIGNED	NUMBER OF REPORTS ASSIGNED WITH A REMOVAL	% OF REPORTS WHERE A CHILD WAS PLACED IN OUT-OF-HOME CARE
APACHE	72	9	12.5%
COCHISE	412	29	7.0%
COCONINO	356	34	9.6%
GILA	178	15	8.4%
GRAHAM	120	19	15.8%
GREENLEE	26	1	3.8%
LA PAZ	55	7	12.7%
MARICOPA	11,890	1,403	11.8%
MOHAVE	633	64	10.1%
NAVAJO	276	28	10.1%
PIMA	3,771	644	17.1%
PINAL	1,232	110	8.9%
SANTA CRUZ	119	9	7.6%
YAVAPAI	635	49	7.7%
YUMA	478	36	7.5%
STATEWIDE	20,253	2,457	12.1%

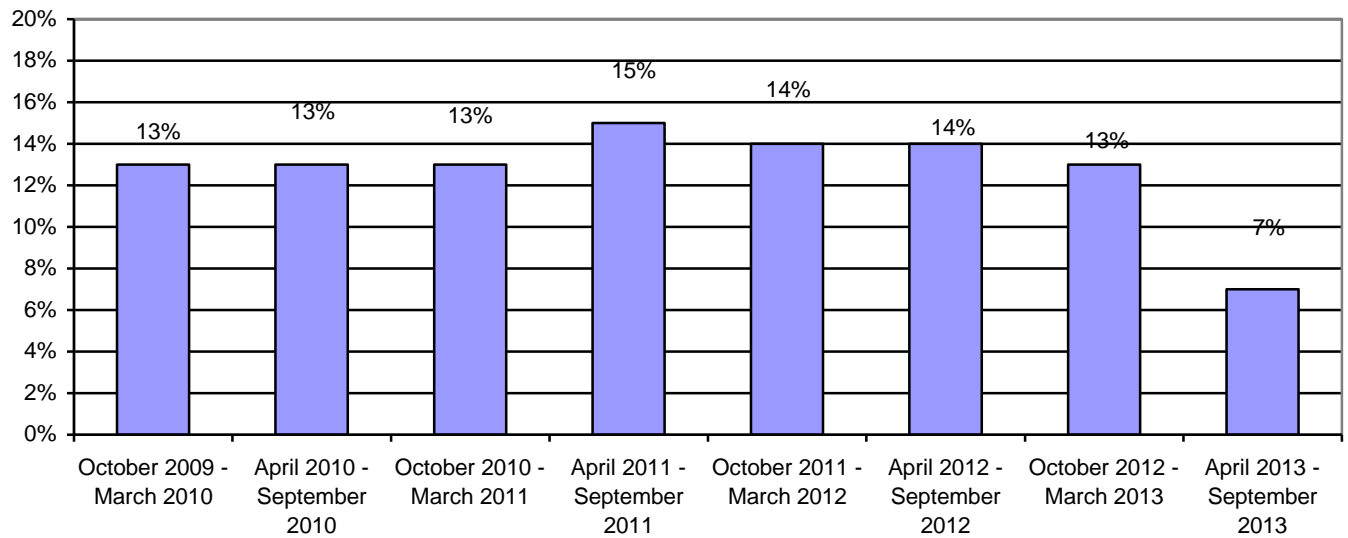
COMPLETED INVESTIGATIONS

Substantiated reports are reports where the Department has determined that at least one of the allegations in the report of abuse and/or neglect is true. The number of reports that are considered substantiated are a subset of the total number of reports that were received, investigated, and closed during the reporting period.

The preliminary number of CPS reports that are substantiated for the current reporting period is 1,456. For the prior reporting period, the number of CPS reports that were assigned for investigation that resulted in substantiated findings was revised from 1,267 to 2,588 to reflect subsequent decisions based on parents' rights to due process.

- The preliminary substantiation rate for the current reporting period is 7%. However, the substantiation rate for the current period is anticipated to be revised upwards in the next semi-annual report.
- The substantiation rate for the prior reporting period is 13%. However, when initially reported, the October 2012 – March 2013 substantiation rate was 6%.

**CHART 11
SUBSTANTIATION RATE BY REPORTING PERIOD**



Information on both proposed substantiations and finalized substantiations is provided in the charts and tables below:

- For information on the proposed substantiated investigation findings—classified by priority—for the current and prior reporting period, see Chart 12, Table 17, and Table 18.
- For information on the proposed substantiated investigation findings—classified by type of maltreatment—for the current and prior reporting period, see Chart 13, Table 19, and Table 20.
- For information on the substantiated investigation findings—classified by priority—for the current and prior reporting period, see Chart 14, Table 21, and Table 22.
- For information on the substantiated investigation findings—classified by type of maltreatment—for the current and prior reporting period, see Chart 15, Table 23, and Table 24.

CHART 12
NUMBER OF REPORTS ASSIGNED FOR INVESTIGATION BY PRIORITY AND REPORTING PERIOD THAT RESULTED IN PROPOSED SUBSTANTIATION

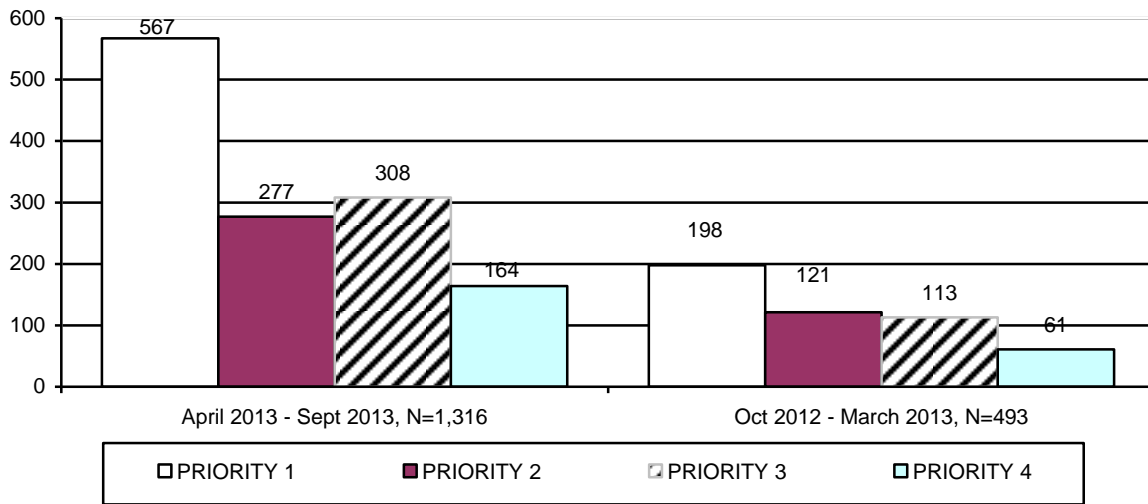


TABLE 17
NUMBER OF REPORTS ASSIGNED FOR INVESTIGATION BY PRIORITY AND COUNTY THAT RESULTED IN PROPOSED SUBSTANTIATION FOR PERIOD OF APRIL 1, 2013 THROUGH SEPTEMBER 30, 2013

COUNTY	PRIORITY 1	PRIORITY 2	PRIORITY 3	PRIORITY 4	TOTAL	% OF TOTAL
APACHE	0	1	1	0	2	0.2%
COCHISE	11	6	1	2	20	1.5%
COCONINO	3	2	5	0	10	0.8%
GILA	3	5	2	1	11	0.8%
GRAHAM	0	4	1	0	5	0.4%
GREENLEE	0	0	0	0	0	0.0%
LA PAZ	1	0	0	0	1	0.1%
MARICOPA	352	148	185	125	810	61.5%
MOHAVE	18	7	5	1	31	2.4%
NAVAJO	7	1	2	1	11	0.8%
PIMA	113	79	75	23	290	22.0%
PINAL	25	16	8	4	53	4.0%
SANTA CRUZ	1	0	1	2	4	0.3%
YAVAPAI	13	5	10	2	30	2.3%
YUMA	20	3	12	3	38	2.9%
STATEWIDE	567	277	308	164	1,316	100.0%
% OF TOTAL	43.0%	21.1%	23.4%	12.5%	100.0%	

TABLE 18
NUMBER OF REPORTS ASSIGNED FOR INVESTIGATION BY PRIORITY AND COUNTY
THAT RESULTED IN PROPOSED SUBSTANTIATION FOR PERIOD OF
OCTOBER 1, 2012 THROUGH MARCH 31, 2013

COUNTY	PRIORITY 1	PRIORITY 2	PRIORITY 3	PRIORITY 4	TOTAL	% OF TOTAL
APACHE	0	0	0	0	0	0.0%
COCHISE	5	2	3	0	10	2.0%
COCONINO	2	0	0	0	2	0.4%
GILA	4	0	0	0	4	0.8%
GRAHAM	5	1	1	0	7	1.4%
GREENLEE	0	0	0	0	0	0.0%
LA PAZ	2	1	0	0	3	0.6%
MARICOPA	95	63	53	45	256	52.0%
MOHAVE	8	3	3	1	15	3.0%
NAVAJO	1	1	0	0	2	0.4%
PIMA	50	34	44	9	137	27.8%
PINAL	13	12	3	3	31	6.3%
SANTA CRUZ	0	0	0	0	0	0.0%
YAVAPAI	8	4	3	2	17	3.5%
YUMA	5	0	3	1	9	1.8%
STATEWIDE	198	121	113	61	493	100.0%
% OF TOTAL	40.2%	24.5%	22.9%	12.4%	100.0%	

CHART 13
NUMBER OF REPORTS ASSIGNED FOR INVESTIGATION BY TYPE OF MALTREATMENT
THAT RESULTED IN PROPOSED SUBSTANTIATION

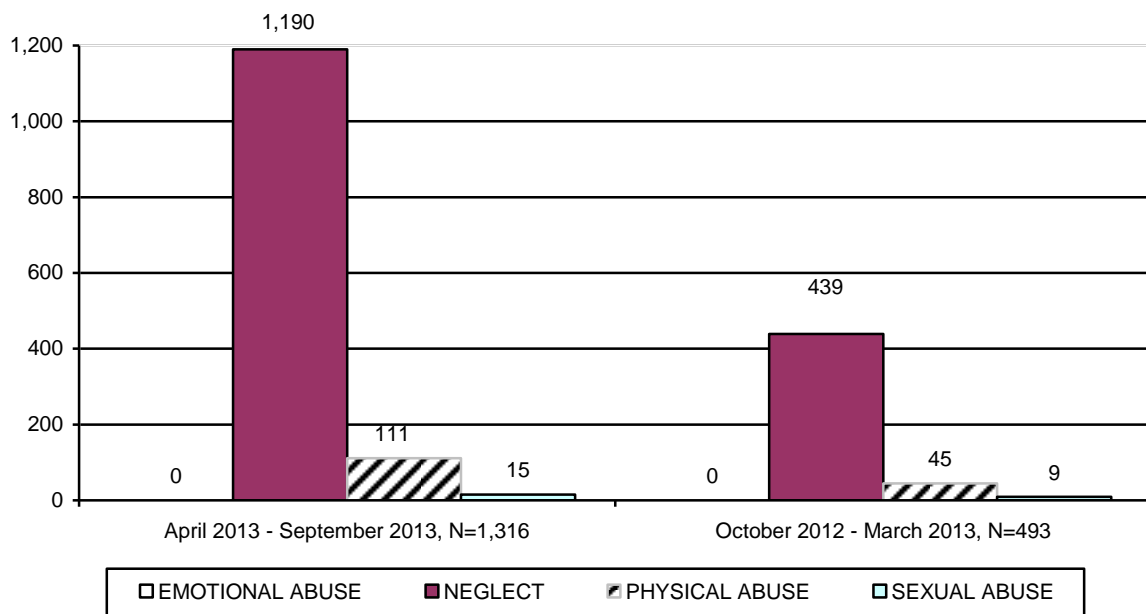


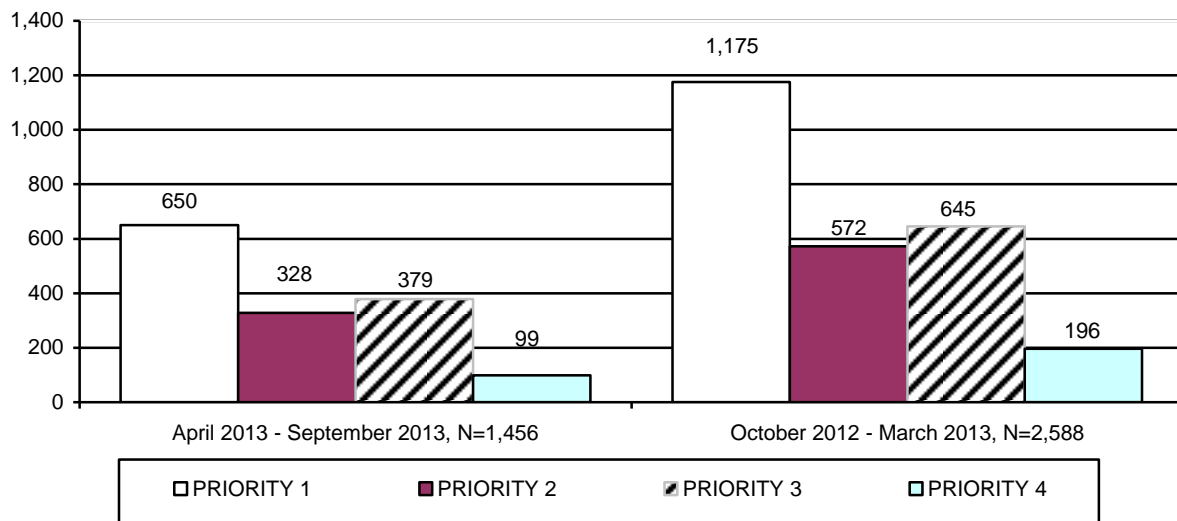
TABLE 19
NUMBER OF REPORTS ASSIGNED FOR INVESTIGATION BY TYPE OF MALTREATMENT
BY COUNTY THAT RESULTED IN PROPOSED SUBSTANTIATION FOR PERIOD OF
APRIL 1, 2013 THROUGH SEPTEMBER 30, 2013

COUNTY	EMOTIONAL ABUSE	NEGLECT	PHYSICAL ABUSE	SEXUAL ABUSE	TOTAL	% OF TOTAL
APACHE	0	1	1	0	2	0.2%
COCHISE	0	19	1	0	20	1.5%
COCONINO	0	5	5	0	10	0.8%
GILA	0	11	0	0	11	0.8%
GRAHAM	0	5	0	0	5	0.4%
GREENLEE	0	0	0	0	0	0.0%
LA PAZ	0	1	0	0	1	0.1%
MARICOPA	0	717	79	14	810	61.5%
MOHAVE	0	29	2	0	31	2.4%
NAVAJO	0	11	0	0	11	0.8%
PIMA	0	277	13	0	290	22.0%
PINAL	0	49	4	0	53	4.0%
SANTA CRUZ	0	4	0	0	4	0.3%
YAVAPAI	0	27	2	1	30	2.3%
YUMA	0	34	4	0	38	2.9%
STATEWIDE	0	1,190	111	15	1,316	100.0%
% OF TOTAL	0.0%	90.5%	8.4%	1.1%	100.0%	

TABLE 20
NUMBER OF REPORTS ASSIGNED FOR INVESTIGATION BY TYPE OF MALTREATMENT
BY COUNTY THAT RESULTED IN PROPOSED SUBSTANTIATION FOR PERIOD OF
OCTOBER 1, 2012 THROUGH MARCH 31, 2013

COUNTY	EMOTIONAL ABUSE	NEGLECT	PHYSICAL ABUSE	SEXUAL ABUSE	TOTAL	% OF TOTAL
APACHE	0	0	0	0	0	0.0%
COCHISE	0	9	1	0	10	2.0%
COCONINO	0	1	1	0	2	0.4%
GILA	0	4	0	0	4	0.8%
GRAHAM	0	6	1	0	7	1.4%
GREENLEE	0	0	0	0	0	0.0%
LA PAZ	0	3	0	0	3	0.6%
MARICOPA	0	222	25	9	256	52.0%
MOHAVE	0	13	2	0	15	3.0%
NAVAJO	0	2	0	0	2	0.4%
PIMA	0	126	11	0	137	27.8%
PINAL	0	28	3	0	31	6.3%
SANTA CRUZ	0	0	0	0	0	0.0%
YAVAPAI	0	17	0	0	17	3.5%
YUMA	0	8	1	0	9	1.8%
STATEWIDE	0	439	45	9	493	100.0%
% OF TOTAL	0.0%	89.1%	9.1%	1.8%	100.0%	

**CHART 14
NUMBER OF REPORTS ASSIGNED FOR INVESTIGATION BY PRIORITY AND
REPORTING PERIOD THAT RESULTED IN
SUBSTANTIATION**



**TABLE 21
NUMBER OF REPORTS ASSIGNED FOR INVESTIGATION BY PRIORITY AND COUNTY
THAT RESULTED IN SUBSTANTIATION FOR PERIOD OF
APRIL 1, 2013 THROUGH SEPTEMBER 30, 2013**

COUNTY	PRIORITY 1	PRIORITY 2	PRIORITY 3	PRIORITY 4	TOTAL	% OF TOTAL
APACHE	2	1	2	1	6	0.4%
COCHISE	4	0	0	0	4	0.3%
COCONINO	20	5	13	1	39	2.7%
GILA	3	1	0	0	4	0.3%
GRAHAM	2	1	0	0	3	0.2%
GREENLEE	0	0	2	0	2	0.1%
LA PAZ	1	1	1	0	3	0.2%
MARICOPA	410	186	225	65	886	60.8%
MOHAVE	31	20	11	6	68	4.7%
NAVAJO	8	2	5	0	15	1.0%
PIMA	112	78	57	16	263	18.1%
PINAL	17	17	29	6	69	4.7%
SANTA CRUZ	3	0	1	0	4	0.3%
YAVAPAI	16	12	16	4	48	3.3%
YUMA	21	4	17	0	42	2.9%
STATEWIDE	650	328	379	99	1,456	100.0%
% OF TOTAL	44.7%	22.5%	26.0%	6.8%	100.0%	

TABLE 22
NUMBER OF REPORTS ASSIGNED FOR INVESTIGATION BY PRIORITY AND COUNTY
THAT RESULTED IN SUBSTANTIATION FOR PERIOD OF
OCTOBER 1, 2012 THROUGH MARCH 31, 2013

COUNTY	PRIORITY 1	PRIORITY 2	PRIORITY 3	PRIORITY 4	TOTAL	% OF TOTAL
APACHE	2	3	6	2	13	0.5%
COCHISE	7	5	3	0	15	0.6%
COCONINO	14	10	20	3	47	1.8%
GILA	3	4	3	0	10	0.4%
GRAHAM	8	2	2	0	12	0.5%
GREENLEE	0	1	1	0	2	0.1%
LA PAZ	6	2	1	0	9	0.4%
MARICOPA	755	327	371	141	1,594	61.5%
MOHAVE	42	19	19	6	86	3.3%
NAVAJO	12	7	8	1	28	1.1%
PIMA	215	147	125	31	518	20.0%
PINAL	38	18	21	4	81	3.1%
SANTA CRUZ	9	4	5	0	18	0.7%
YAVAPAI	27	15	33	4	79	3.1%
YUMA	37	8	27	4	76	2.9%
STATEWIDE	1,175	572	645	196	2,588	100.0%
% OF TOTAL	45.4%	22.1%	24.9%	7.6%	100.0%	

CHART 15
NUMBER OF REPORTS ASSIGNED FOR INVESTIGATION BY TYPE OF MALTREATMENT
THAT RESULTED IN SUBSTANTIATION

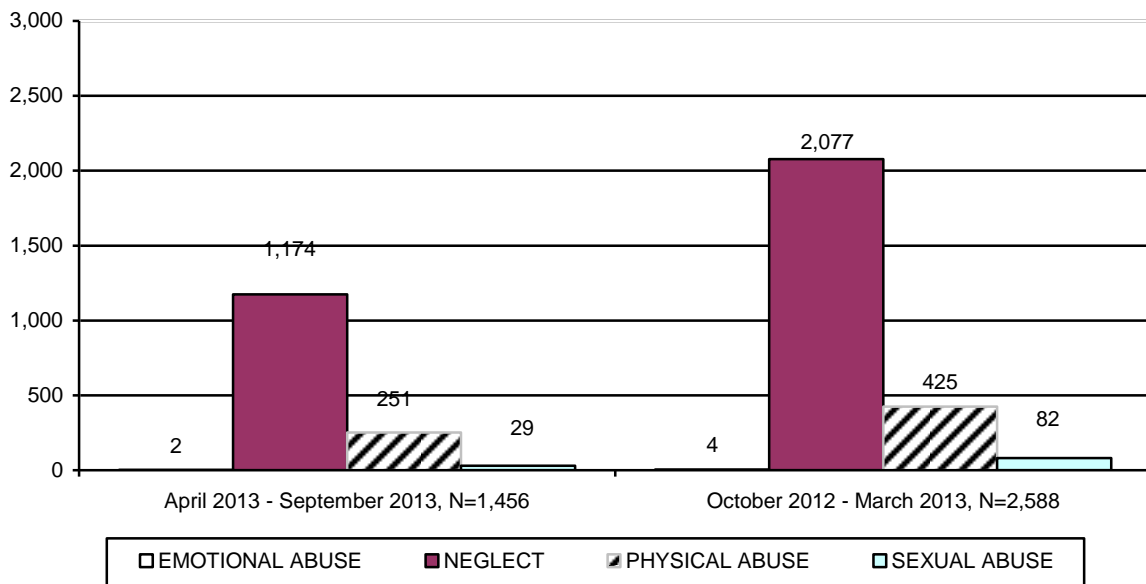


TABLE 23
NUMBER OF REPORTS ASSIGNED FOR INVESTIGATION BY TYPE OF MALTREATMENT
BY COUNTY THAT RESULTED IN SUBSTANTIATION FOR PERIOD OF
APRIL 1, 2013 THROUGH SEPTEMBER 30, 2013

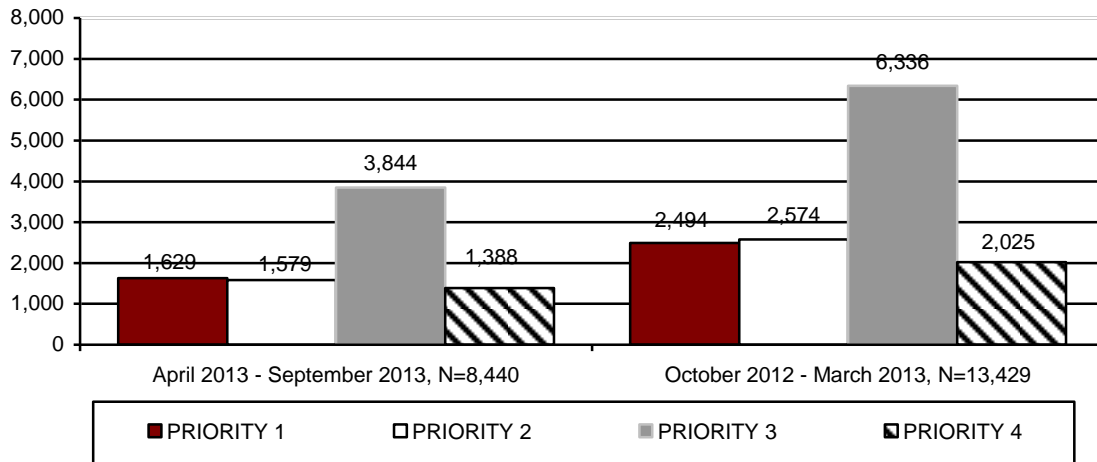
COUNTY	EMOTIONAL ABUSE	NEGLECT	PHYSICAL ABUSE	SEXUAL ABUSE	TOTAL	% OF TOTAL
APACHE	0	5	1	0	6	0.4%
COCHISE	0	4	0	0	4	0.3%
COCONINO	0	28	11	0	39	2.7%
GILA	0	2	2	0	4	0.3%
GRAHAM	0	1	2	0	3	0.2%
GREENLEE	0	1	1	0	2	0.1%
LA PAZ	0	3	0	0	3	0.2%
MARICOPA	1	722	143	20	886	60.8%
MOHAVE	0	54	13	1	68	4.7%
NAVAJO	0	11	2	2	15	1.0%
PIMA	1	213	45	4	263	18.1%
PINAL	0	51	17	1	69	4.7%
SANTA CRUZ	0	3	1	0	4	0.3%
YAVAPAI	0	42	6	0	48	3.3%
YUMA	0	34	7	1	42	2.9%
STATEWIDE	2	1,174	251	29	1,456	100.0%
% OF TOTAL	0.1%	80.7%	17.2%	2.0%	100.0%	

TABLE 24
NUMBER OF REPORTS ASSIGNED FOR INVESTIGATION BY TYPE OF MALTREATMENT
BY COUNTY THAT RESULTED IN SUBSTANTIATION FOR PERIOD OF
OCTOBER 1, 2012 THROUGH MARCH 31, 2013

COUNTY	EMOTIONAL ABUSE	NEGLECT	PHYSICAL ABUSE	SEXUAL ABUSE	TOTAL	% OF TOTAL
APACHE	0	9	3	1	13	0.5%
COCHISE	0	8	6	1	15	0.6%
COCONINO	0	32	12	3	47	1.8%
GILA	0	7	3	0	10	0.4%
GRAHAM	0	7	5	0	12	0.5%
GREENLEE	0	1	1	0	2	0.1%
LA PAZ	0	8	1	0	9	0.4%
MARICOPA	2	1,290	249	53	1,594	61.5%
MOHAVE	0	71	12	3	86	3.3%
NAVAJO	0	20	5	3	28	1.1%
PIMA	1	433	76	8	518	20.0%
PINAL	0	57	20	4	81	3.1%
SANTA CRUZ	0	15	3	0	18	0.7%
YAVAPAI	1	53	21	4	79	3.1%
YUMA	0	66	8	2	76	2.9%
STATEWIDE	4	2,077	425	82	2,588	100.0%
% OF TOTAL	0.2%	80.2%	16.4%	3.2%	100.0%	

The preliminary number of CPS investigations that resulted in an unsubstantiated finding for this reporting period was 8,440. Charts 16 and 17 display information on unsubstantiated reports classified by priority and type of maltreatment for the current and prior reporting periods. Tables 25 and 26 provide information on the unsubstantiated investigation findings classified by priority for each county in the current and prior reporting periods. Tables 27 and 28 provide information on the unsubstantiated investigation findings classified by type of maltreatment for each county in the current and prior reporting periods.

**CHART 16
NUMBER OF REPORTS ASSIGNED FOR INVESTIGATION BY PRIORITY AND REPORTING PERIOD THAT RESULTED IN UNSUBSTANTIATION**



**TABLE 25
NUMBER OF REPORTS ASSIGNED FOR INVESTIGATION BY PRIORITY AND COUNTY THAT RESULTED IN UNSUBSTANTIATION FOR PERIOD OF APRIL 1, 2013 THROUGH SEPTEMBER 30, 2013**

COUNTY	PRIORITY 1	PRIORITY 2	PRIORITY 3	PRIORITY 4	TOTAL	% OF TOTAL
APACHE	2	7	18	11	38	0.5%
COCHISE	24	19	53	23	119	1.4%
COCONINO	40	38	134	56	268	3.2%
GILA	12	15	32	15	74	0.9%
GRAHAM	6	15	39	10	70	0.8%
GREENLEE	2	3	10	1	16	0.2%
LA PAZ	5	7	21	6	39	0.5%
MARICOPA	1,030	915	2,144	777	4,866	57.6%
MOHAVE	66	87	210	68	431	5.1%
NAVAJO	19	31	75	35	160	1.9%
PIMA	244	239	608	189	1,280	15.1%
PINAL	99	103	249	102	553	6.6%
SANTA CRUZ	3	1	10	6	20	0.2%
YAVAPAI	42	62	171	66	341	4.0%
YUMA	35	37	70	23	165	2.0%
STATEWIDE	1,629	1,579	3,844	1,388	8,440	100.0%
% OF TOTAL	19.3%	18.7%	45.5%	16.5%	100.0%	

**TABLE 26
NUMBER OF REPORTS ASSIGNED FOR INVESTIGATION BY PRIORITY AND COUNTY
THAT RESULTED IN UNSUBSTANTIATION FOR PERIOD OF
OCTOBER 1, 2012 THROUGH MARCH 31, 2013**

COUNTY	PRIORITY 1	PRIORITY 2	PRIORITY 3	PRIORITY 4	TOTAL	% OF TOTAL
APACHE	6	5	30	16	57	0.4%
COCHISE	51	52	148	56	307	2.3%
COCONINO	60	53	143	55	311	2.3%
GILA	33	30	72	10	145	1.1%
GRAHAM	23	16	42	14	95	0.7%
GREENLEE	2	4	12	2	20	0.2%
LA PAZ	4	7	28	4	43	0.3%
MARICOPA	1,565	1,553	3,594	1,183	7,895	58.8%
MOHAVE	90	92	280	62	524	3.9%
NAVAJO	28	55	116	34	233	1.7%
PIMA	349	415	1,064	294	2,122	15.8%
PINAL	143	147	320	113	723	5.4%
SANTA CRUZ	4	15	39	12	70	0.5%
YAVAPAI	84	78	251	113	526	3.9%
YUMA	52	52	197	57	358	2.7%
STATEWIDE	2,494	2,574	6,336	2,025	13,429	100.0%
% OF TOTAL	18.6%	19.2%	47.1%	15.1%	100.0%	

**CHART 17
NUMBER OF REPORTS ASSIGNED FOR INVESTIGATION BY TYPE OF MALTREATMENT
THAT RESULTED IN UNSUBSTANTIATION BY REPORTING PERIOD**

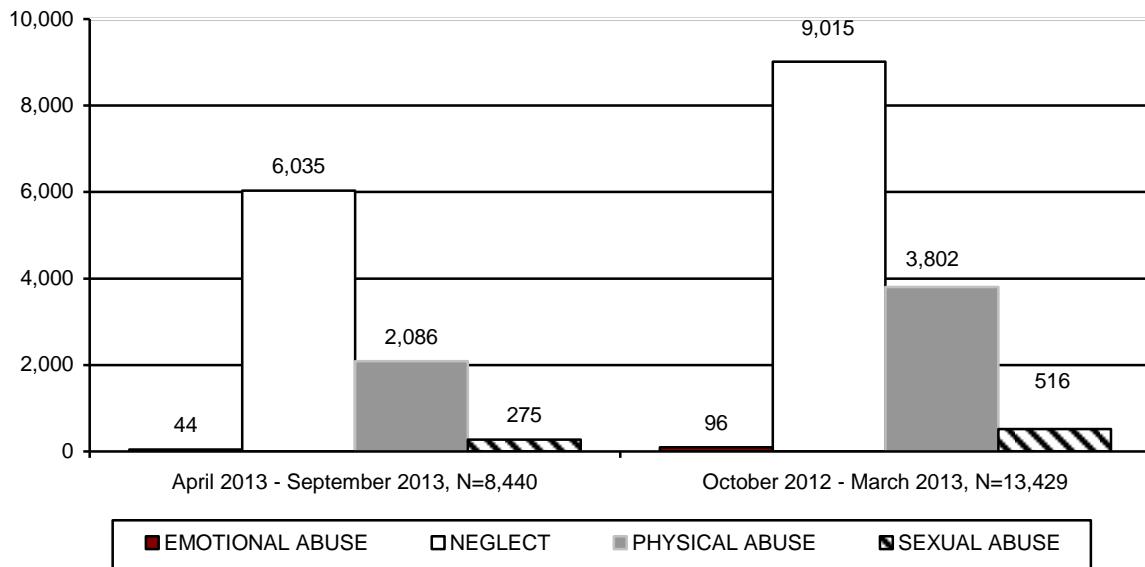


TABLE 27
NUMBER OF REPORTS ASSIGNED FOR INVESTIGATION BY TYPE OF MALTREATMENT
BY COUNTY THAT RESULTED IN UNSUBSTANTIATION FOR PERIOD OF
APRIL 1, 2013 THROUGH SEPTEMBER 30, 2013

COUNTY	EMOTIONAL ABUSE	NEGLECT	PHYSICAL ABUSE	SEXUAL ABUSE	TOTAL	% OF TOTAL
APACHE	0	29	8	1	38	0.5%
COCHISE	1	92	23	3	119	1.4%
COCONINO	1	182	70	15	268	3.2%
GILA	0	58	15	1	74	0.9%
GRAHAM	0	44	23	3	70	0.8%
GREENLEE	0	9	6	1	16	0.2%
LA PAZ	1	24	10	4	39	0.5%
MARICOPA	22	3,444	1,226	174	4,866	57.6%
MOHAVE	4	311	107	9	431	5.1%
NAVAJO	1	116	35	8	160	1.9%
PIMA	10	933	312	25	1,280	15.1%
PINAL	0	400	138	15	553	6.6%
SANTA CRUZ	0	13	6	1	20	0.2%
YAVAPAI	4	246	81	10	341	4.0%
YUMA	0	134	26	5	165	2.0%
STATEWIDE	44	6,035	2,086	275	8,440	100.0%
% OF TOTAL	0.5%	71.5%	24.7%	3.3%	100.0%	

TABLE 28
NUMBER OF REPORTS ASSIGNED FOR INVESTIGATION BY TYPE OF MALTREATMENT
BY COUNTY THAT RESULTED IN UNSUBSTANTIATION FOR PERIOD OF
OCTOBER 1, 2012 THROUGH MARCH 31, 2013

COUNTY	EMOTIONAL ABUSE	NEGLECT	PHYSICAL ABUSE	SEXUAL ABUSE	TOTAL	% OF TOTAL
APACHE	0	38	16	3	57	0.4%
COCHISE	4	196	96	11	307	2.3%
COCONINO	2	198	101	10	311	2.3%
GILA	2	99	41	3	145	1.1%
GRAHAM	0	64	26	5	95	0.7%
GREENLEE	0	11	7	2	20	0.2%
LA PAZ	0	34	9	0	43	0.3%
MARICOPA	51	5,317	2,206	321	7,895	58.8%
MOHAVE	4	352	153	15	524	3.9%
NAVAJO	0	154	75	4	233	1.7%
PIMA	18	1,421	620	63	2,122	15.8%
PINAL	5	493	193	32	723	5.4%
SANTA CRUZ	1	46	21	2	70	0.5%
YAVAPAI	6	353	141	26	526	3.9%
YUMA	3	239	97	19	358	2.7%
STATEWIDE	96	9,015	3,802	516	13,429	100.0%
% OF TOTAL	0.7%	67.2%	28.3%	3.8%	100.0%	

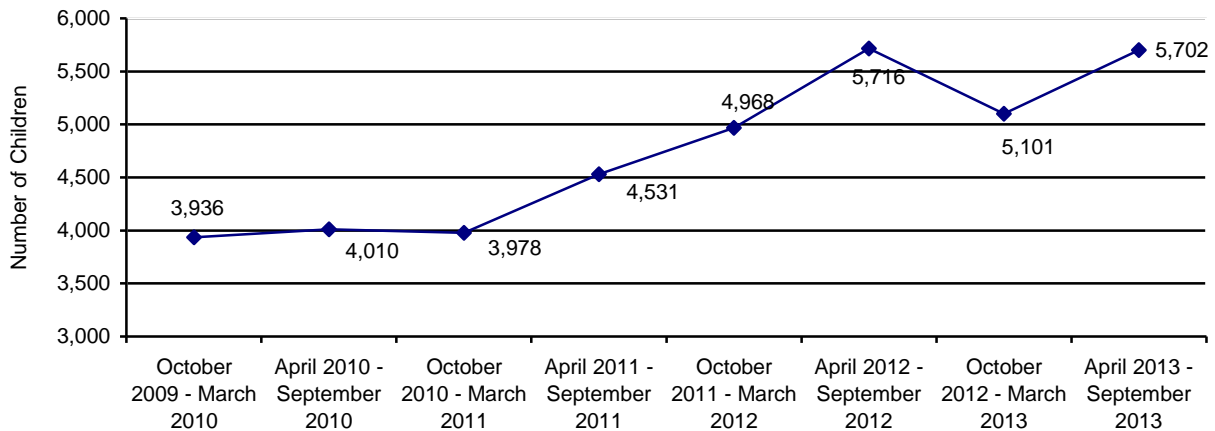
SAFE HAVEN INFANTS

Communications from providers indicate that there was one newborn infant delivered to Safe Haven providers during the April 2013 – September 2013 reporting period. This compares to one infant being delivered to Safe Haven providers during the prior reporting period.

CHILDREN ENTERING OUT-OF-HOME CARE

During the current reporting period, 5,702 children entered care, which represents an 11.8% increase in children entering care over the prior reporting period and a 0.2% decrease over the same reporting period last year. Chart 18 displays children entering out-of-home care by reporting period. As can be seen from the chart below, the dramatic increase in children entering out-of-home care began at the end of FY 2011. Since that time, the number of children entering out-of-home care has remained high, which is a reflection of the growth in the number of reports received by the CPS Hotline (see Chart 1 for number of reports detail). The proportion of new children removed in relation to CPS Hotline reports has consistently been approximately 23 to 26 percent.

**CHART 18
TOTAL CHILDREN ENTERING OUT-OF-HOME CARE BY REPORTING PERIOD**



CHILDREN ENTERING OUT-OF-HOME CARE – VOLUNTARY SERVICES

The number of children entering out-of-home placement through voluntary foster care agreements for the current reporting period was 118, which represents 2.1% of the children entering care this reporting period. Information on the county level distribution of voluntary placements into out-of-home care can be found in Table 29 for the current reporting period and in Table 30 for the prior reporting period.

Voluntary foster care may be provided when the parents or legal guardians of a child have requested such assistance and have signed a legally binding written agreement for the temporary placement of the child in foster care while risk factors are addressed to enable the child to live safely at home. A.R.S. § 8-806 authorizes the Department to provide voluntary foster care placement for children for a period not to exceed 90 days and no more than twice within 24 consecutive months.

TABLE 29
NUMBER OF CHILDREN ENTERING OUT-OF-HOME CARE BY COUNTY WHO ARE
VOLUNTARY PLACEMENTS FOR CHILDREN UNDER THE AGE OF EIGHTEEN FOR THE
PERIOD OF APRIL 1, 2013 THROUGH SEPTEMBER 30, 2013

COUNTY	NUMBER OF CHILDREN REMOVED	% OF TOTAL REMOVALS	NUMBER OF CHILDREN ENTERING OUT-OF-HOME CARE UNDER THE AGE OF EIGHTEEN WHO ARE VOLUNTARY PLACEMENTS	% OF CHILDREN REMOVED WHO ARE VOLUNTARY PLACEMENTS
APACHE	10	0.2%	1	0.9%
COCHISE	98	1.7%	0	0.0%
COCONINO	58	1.0%	5	4.2%
GILA	55	1.0%	0	0.0%
GRAHAM	31	0.5%	0	0.0%
GREENLEE	6	0.1%	0	0.0%
LA PAZ	7	0.1%	1	0.9%
MARICOPA	3,296	57.8%	35	29.7%
MOHAVE	144	2.5%	3	2.5%
NAVAJO	67	1.2%	7	5.9%
PIMA	1,334	23.4%	46	39.0%
PINAL	325	5.7%	7	5.9%
SANTA CRUZ	21	0.4%	0	0.0%
YAVAPAI	140	2.5%	8	6.8%
YUMA	110	1.9%	5	4.2%
STATEWIDE	5,702	100.0%	118	100.0%

TABLE 30
NUMBER OF CHILDREN ENTERING OUT-OF-HOME CARE BY COUNTY WHO ARE
VOLUNTARY PLACEMENTS FOR CHILDREN UNDER THE AGE OF EIGHTEEN FOR THE
PERIOD OF OCTOBER 1, 2012 THROUGH MARCH 31, 2013

COUNTY	NUMBER OF CHILDREN REMOVED	% OF TOTAL REMOVALS	NUMBER OF CHILDREN ENTERING OUT-OF-HOME CARE UNDER THE AGE OF EIGHTEEN WHO ARE VOLUNTARY PLACEMENTS	% OF CHILDREN REMOVED WHO ARE VOLUNTARY PLACEMENTS
APACHE	10	0.2%	0	0.0%
COCHISE	60	1.2%	0	0.0%
COCONINO	49	1.0%	5	5.2%
GILA	40	0.8%	1	1.0%
GRAHAM	47	0.9%	0	0.0%
GREENLEE	0	0.0%	0	0.0%
LA PAZ	7	0.1%	0	0.0%
MARICOPA	2,927	57.3%	40	41.2%
MOHAVE	124	2.4%	5	5.2%
NAVAJO	62	1.2%	2	2.1%
PIMA	1,281	25.1%	27	27.8%
PINAL	254	5.0%	2	2.1%
SANTA CRUZ	15	0.3%	0	0.0%
YAVAPAI	115	2.3%	14	14.4%
YUMA	110	2.2%	1	1.0%
STATEWIDE	5,101	100.0%	97	100.0%

NUMBER OF CHILDREN ENTERING OUT-OF-HOME CARE

The total number of children entering out-of-home care (of which voluntary placements are a subset) in the current reporting period was 5,702, which represents an 11.8% increase in the total number of children entering out-of-home care from the prior reporting period. Chart 19 displays the number of removed children, and then further differentiates new removals by providing the number with a prior removal in the past 12 months and the past 12 to 24 months. Information on the county level distribution of children entering out-of-home care can be found in Table 31 for the current period and Table 32 for the prior period.

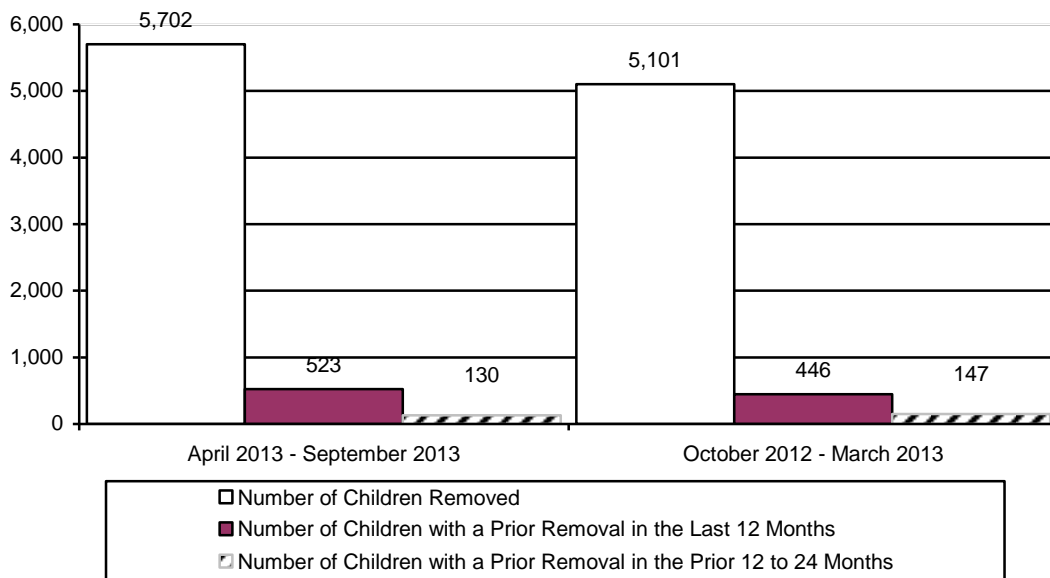
**TABLE 31
NUMBER OF CHILDREN ENTERING OUT-OF-HOME CARE BY COUNTY FOR THE
PERIOD OF APRIL 1, 2013 THROUGH SEPTEMBER 30, 2013**

COUNTY	NUMBER OF CHILDREN REMOVED	% OF TOTAL REMOVALS	NUMBER OF CHILDREN WITH A PRIOR REMOVAL IN THE LAST 12 MONTHS	% OF CHILDREN WITH A PRIOR REMOVAL IN THE LAST 12 MONTHS	NUMBER OF CHILDREN WITH A REMOVAL IN THE PRIOR 12 TO 24 MONTHS	% OF CHILDREN WITH A PRIOR REMOVAL IN THE PRIOR 12 TO 24 MONTHS
APACHE	10	0.2%	2	20.0%	0	0.0%
COCHISE	98	1.7%	4	4.1%	6	6.1%
COCONINO	58	1.0%	10	17.2%	2	3.4%
GILA	55	1.0%	1	1.8%	0	0.0%
GRAHAM	31	0.5%	1	3.2%	0	0.0%
GREENLEE	6	0.1%	3	50.0%	0	0.0%
LA PAZ	7	0.1%	0	0.0%	0	0.0%
MARICOPA	3,296	57.8%	297	9.0%	65	2.0%
MOHAVE	144	2.5%	12	8.3%	7	4.9%
NAVAJO	67	1.2%	5	7.5%	0	0.0%
PIMA	1,334	23.4%	137	10.3%	33	2.5%
PINAL	325	5.7%	27	8.3%	10	3.1%
SANTA CRUZ	21	0.4%	0	0.0%	0	0.0%
YAVAPAI	140	2.5%	16	11.4%	4	2.9%
YUMA	110	1.9%	8	7.3%	3	2.7%
STATEWIDE	5,702	100.0%	523	9.2%	130	2.3%

TABLE 32
NUMBER OF CHILDREN ENTERING OUT-OF-HOME CARE BY COUNTY FOR THE PERIOD OF OCTOBER 1, 2012 THROUGH MARCH 31, 2013

COUNTY	NUMBER OF CHILDREN REMOVED	% OF TOTAL REMOVALS	NUMBER OF CHILDREN WITH A PRIOR REMOVAL IN THE LAST 12 MONTHS	% OF CHILDREN WITH A PRIOR REMOVAL IN THE LAST 12 MONTHS	NUMBER OF CHILDREN WITH A REMOVAL IN THE PRIOR 12 TO 24 MONTHS	% OF CHILDREN WITH A PRIOR REMOVAL IN THE PRIOR 12 TO 24 MONTHS
APACHE	10	0.2%	0	0.0%	0	0.0%
COCHISE	60	1.2%	4	6.7%	2	3.3%
COCONINO	49	1.0%	2	4.1%	1	2.0%
GILA	40	0.8%	10	25.0%	0	0.0%
GRAHAM	47	0.9%	3	6.4%	2	4.3%
GREENLEE	0	0.0%	0	0.0%	0	0.0%
LA PAZ	7	0.1%	0	0.0%	0	0.0%
MARICOPA	2,927	57.3%	258	8.8%	70	2.4%
MOHAVE	124	2.4%	16	12.9%	3	2.4%
NAVAJO	62	1.2%	1	1.6%	5	8.1%
PIMA	1,281	25.1%	133	10.4%	54	4.2%
PINAL	254	5.0%	12	4.7%	10	3.9%
SANTA CRUZ	15	0.3%	1	6.7%	0	0.0%
YAVAPAI	115	2.3%	6	5.2%	0	0.0%
YUMA	110	2.2%	0	0.0%	0	0.0%
STATEWIDE	5,101	100.0%	446	8.7%	147	2.9%

CHART 19
NUMBER OF CHILDREN ENTERING OUT-OF-HOME CARE BY REPORTING PERIOD



CHILDREN IN OUT-OF-HOME CARE

Chart 20 below shows the number of children in out-of-home care on the final day of the current and past reporting periods.

On the final day of the current reporting period, 12,171 (80.9%) children were placed in family settings either with relatives or in foster homes. Placement information for children in out-of-home care for the current and prior reporting periods can be found in Chart 27. See Table 33 for the out-of-home population organized to show the number of children, grouped by age, in each placement type for the current reporting period.

For information on the age distribution of children in out-of-home care see Chart 24, which displays this information for the current and prior reporting periods. The ethnicity of children in out-of-home care for the current and prior reporting periods is displayed in Chart 25.

**CHART 20
NUMBER OF CHILDREN IN OUT-OF-HOME CARE ON THE LAST DAY OF THE
REPORTING PERIOD BY REPORTING PERIOD**

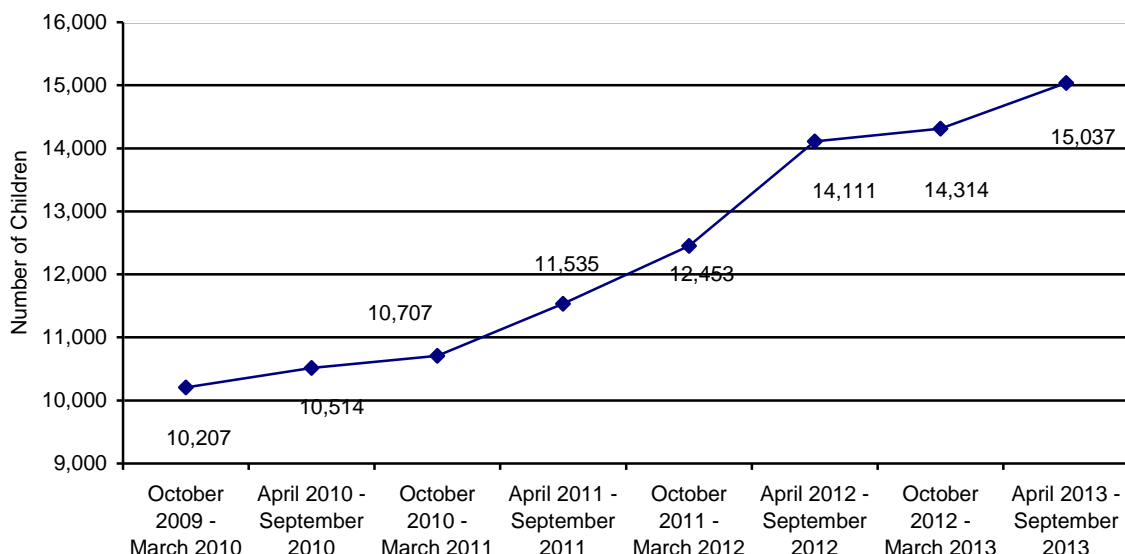


Chart 21 displays an increase in the number of young children ages 0-6 placed in group homes. Comparing March 2008 to September 2013, the number of young children in group homes increased by 57 children.

Chart 22 displays the increase in the number of young children ages 0-3 placed in shelter care. Comparing March 2008 to September 2013, the number of young children in shelters increased by 26 children. Chart 23 shows that the average length of time in shelter care has decreased; comparing March 2008 to September 2013, the average length of stay in shelter decreased from 103.4 to 94.5 days, an decrease of 8.9 days or 8.6%. The Department recognizes that shelter care is rarely, if ever, the best placement for children and continues to strive to place children in the best possible environment to ensure the safety and well-being of the child.

CHART 21
THE NUMBER OF CHILDREN IN GROUP HOMES AGES 0 THROUGH 6⁴

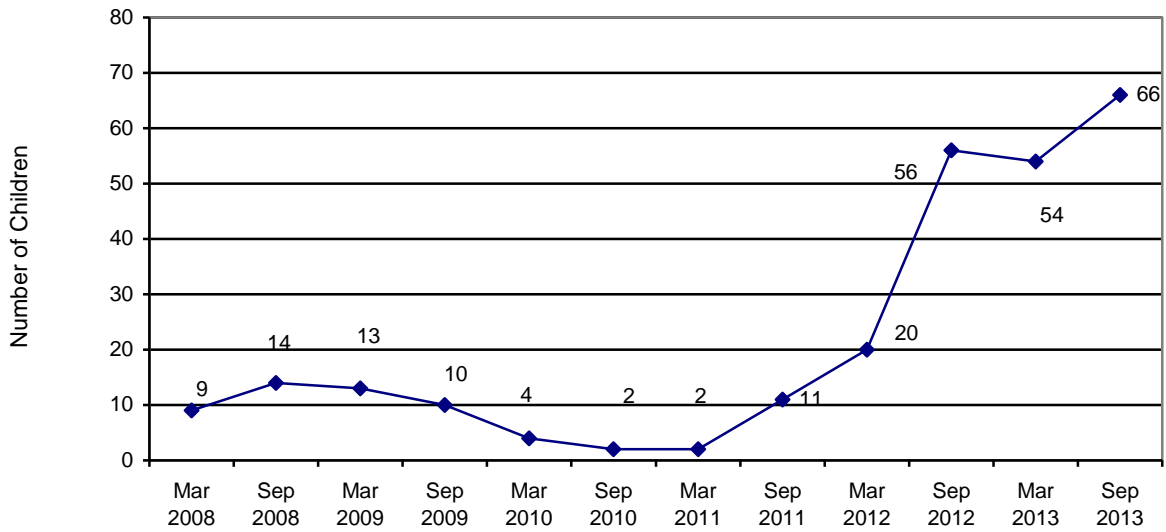
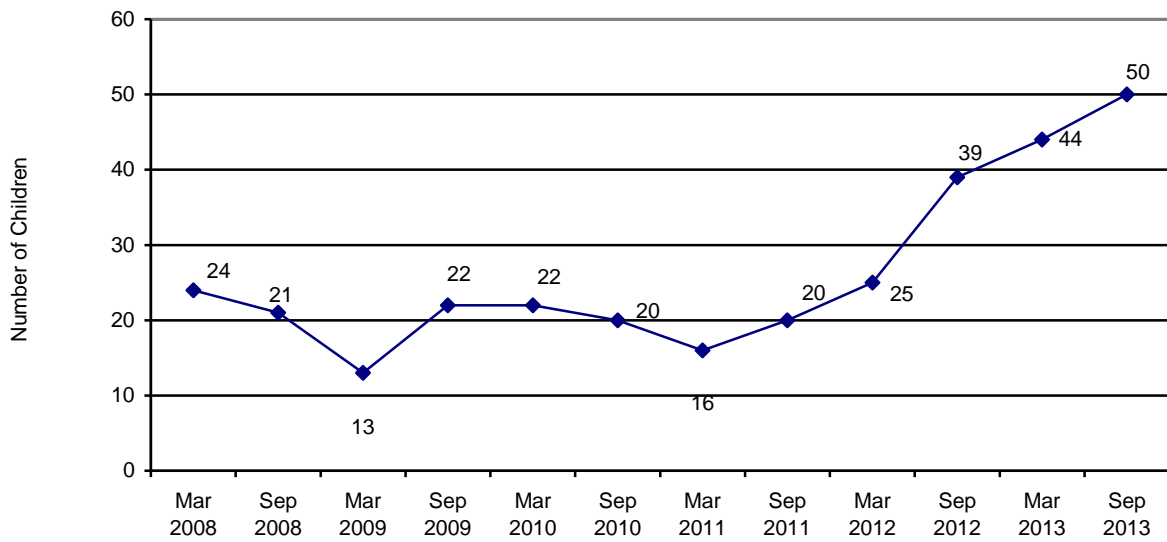


CHART 22
THE NUMBER OF CHILDREN IN SHELTER CARE AGES 0 THROUGH 3



⁴ Excludes infants placed with their mothers and children placed in foster home group models.

CHART 23
THE AVERAGE LENGTH OF STAY FOR CHILDREN AGES 0 TO 3 IN A SHELTER PLACEMENT ON THE LAST DAY OF THE REPORTING PERIOD

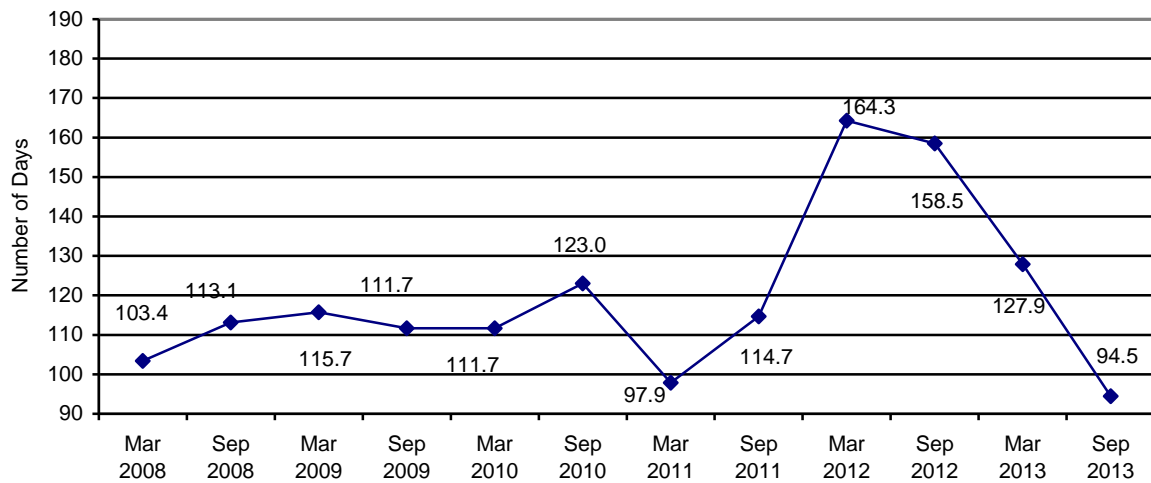
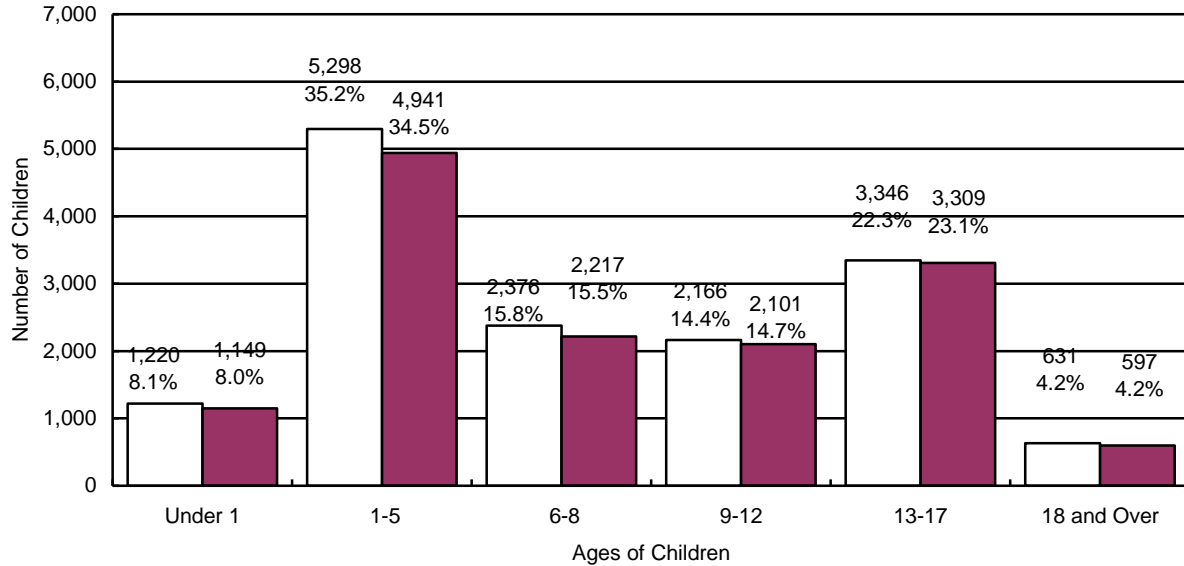
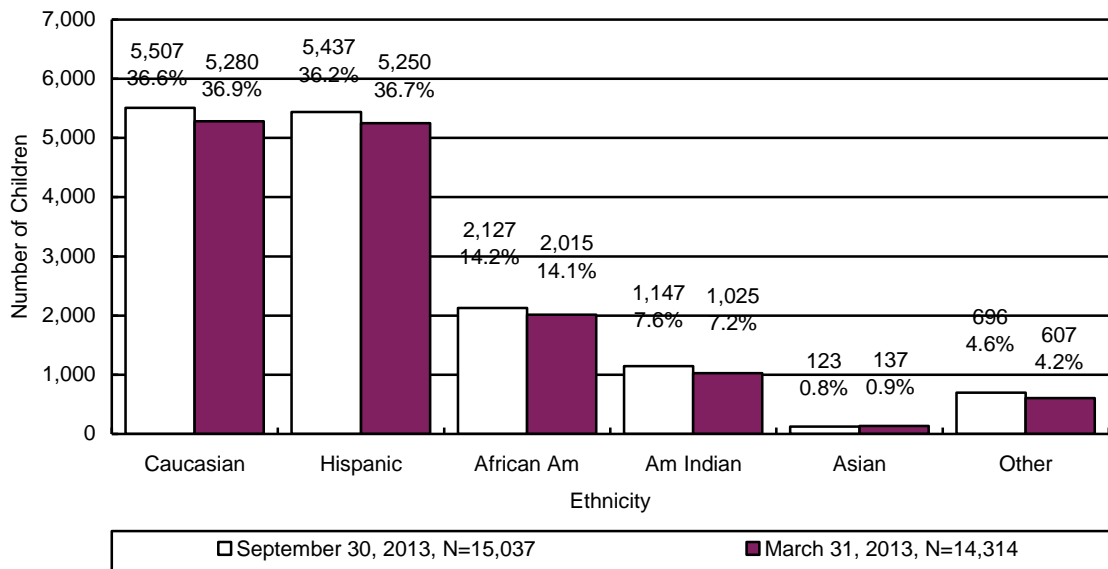


CHART 24
THE NUMBER OF CHILDREN IN OUT-OF-HOME CARE BY AGE



□ September 30, 2013, N=15,037 ■ March 31, 2013, N=14,314

CHART 25
THE NUMBER OF CHILDREN IN OUT-OF-HOME CARE BY ETHNICITY



For 52.5% of the children in out-of-home care, family reunification remains the primary case plan goal. See Chart 26 for additional detail on the case plan goals of children in out-of-home care.

CHART 26
THE NUMBER OF CHILDREN IN OUT-OF-HOME CARE BY CASE PLAN GOAL

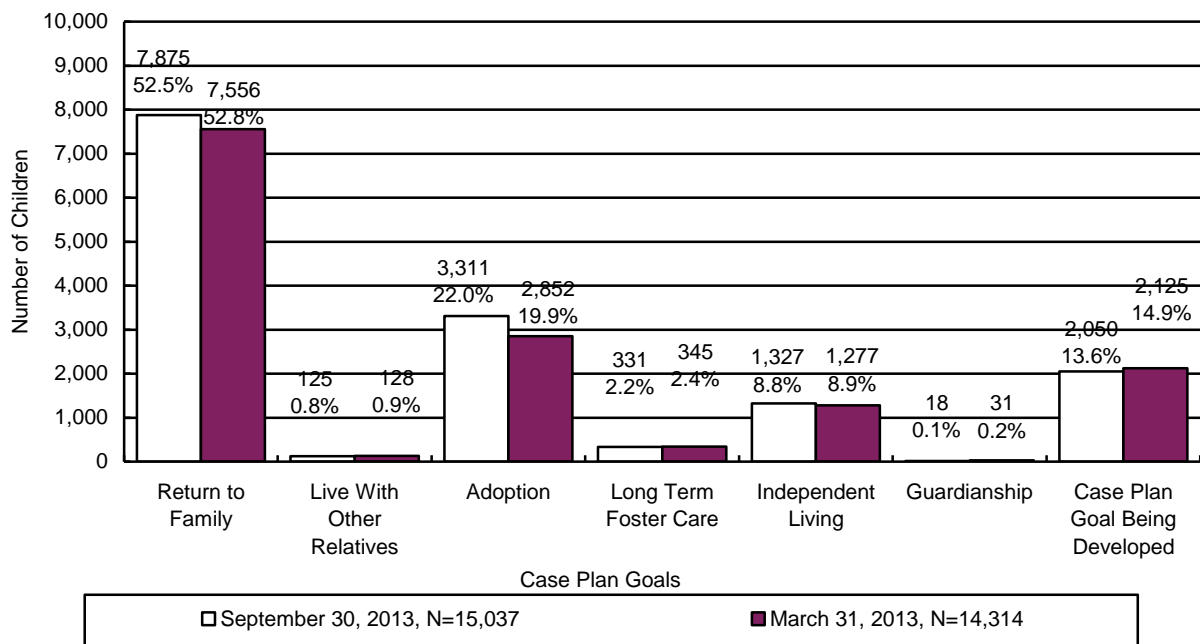
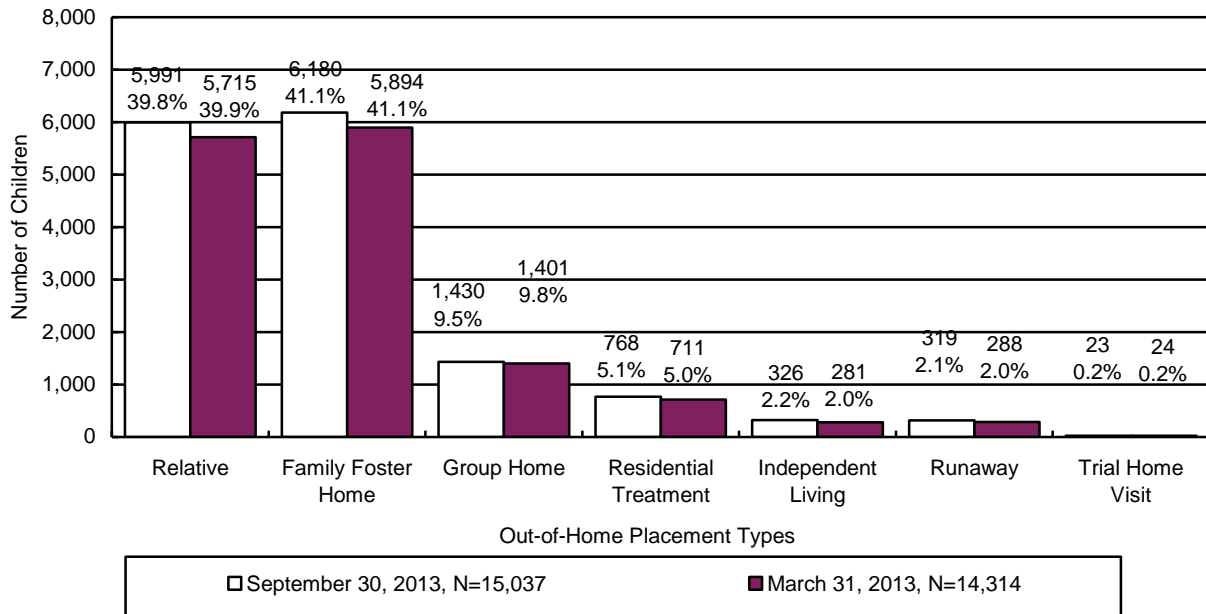


CHART 27
THE NUMBER OF CHILDREN IN OUT-OF-HOME CARE BY PLACEMENT TYPE⁵



⁵ In every reporting cycle, DES has children who in the CHILDS database do not have a placement identified when the data extract has run. It has been the historical practice of the Department to proportionally allocate the unidentified children across the placement types. The Division will develop strategies to minimize the need for this allocation in future reports.

**TABLE 33
THE NUMBER OF CHILDREN IN OUT-OF-HOME CARE BY PLACEMENT TYPE AND AGE**

	RELATIVE	FAMILY FOSTER	GROUP HOME	RESIDENTIAL TREATMENT ⁶	INDEPENDENT LIVING	RUNAWAY / ABSCONDED ⁷	TRIAL HOME VISIT	TOTAL	% OF TOTAL
UNDER 1	506	693	6	12	0	2	1	1,220	8.0%
1	583	747	7	15	0	2	0	1,354	8.9%
2	546	556	7	16	0	0	0	1,125	7.5%
3	479	454	9	13	0	2	2	959	6.4%
4	474	433	13	16	0	1	3	940	6.3%
5	455	411	33	17	0	2	2	920	6.1%
6	452	361	30	21	0	0	3	867	5.8%
7	374	362	51	15	0	1	3	806	5.4%
8	348	285	47	23	0	0	0	703	4.7%
9	301	257	42	14	0	1	2	617	4.1%
10	241	230	54	12	0	1	2	540	3.6%
11	231	202	77	20	0	1	0	531	3.5%
12	169	208	68	28	0	3	2	478	3.2%
13	191	178	97	44	0	4	1	515	3.4%
14	158	171	141	62	0	17	1	550	3.7%
15	171	174	182	82	0	38	0	647	4.3%
16	145	211	236	107	0	70	1	770	5.1%
17	119	178	281	154	5	127	0	864	5.8%
18 AND OLDER	48	69	49	97	321	47	0	631	4.2%
TOTAL	5,991	6,180	1,430	768	326	319	23	15,037	100.0%
% OF TOTAL	39.8%	41.1%	9.5%	5.1%	2.2%	2.1%	0.2%	100.0%	

⁶ This category includes shelter, detention, and hospital placement types.

⁷ This category includes children whose parents absconded with the child(ren) during this reporting period.

During the reporting period 824 children remained in a shelter or receiving home for more than 21 consecutive days. Chart 28 displays children by age grouping who remained in shelter more than 21 days for the current reporting period.

CHART 28
NUMBER AND PERCENTAGE OF CHILDREN IN SHELTER OR RECEIVING HOMES FOR MORE THAN 21 CONSECUTIVE DAYS BY AGE OF CHILD⁸

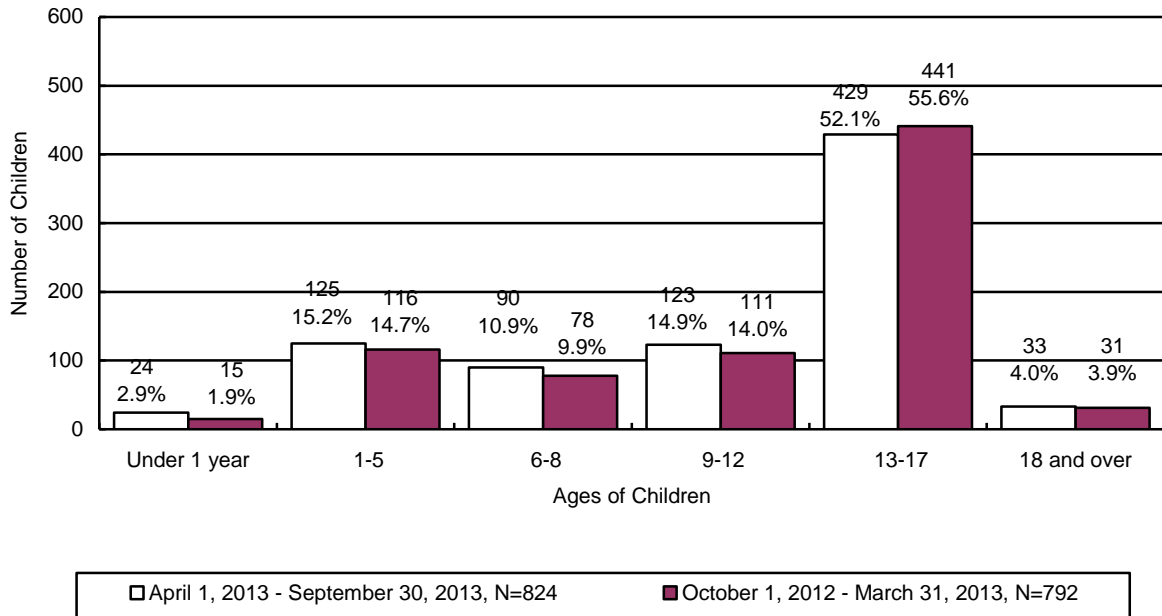
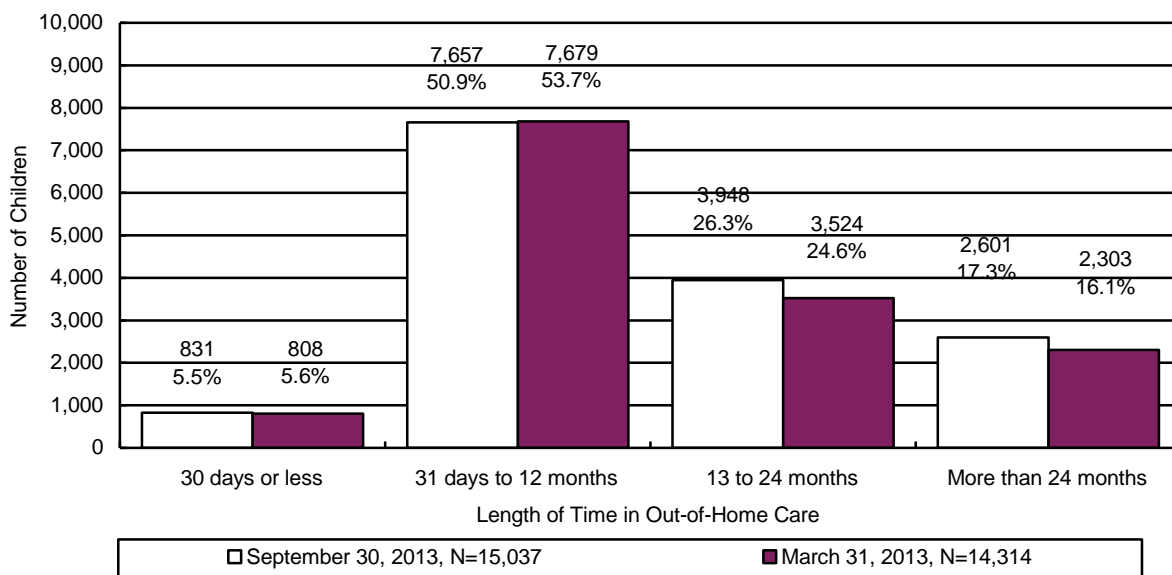


CHART 29

⁸ The chart displays children who spent more than 21 days in shelter during the period. This number differs from the other out-of-home charts as they display children in out-of-home care on the last day of the reporting period.

THE NUMBER OF CHILDREN IN OUT-OF-HOME CARE BY LENGTH OF TIME IN CARE



Information on the number of placements in terms of the average, median, and range for children in out-of-home care on the last day of the reporting period is shown in Table 34.

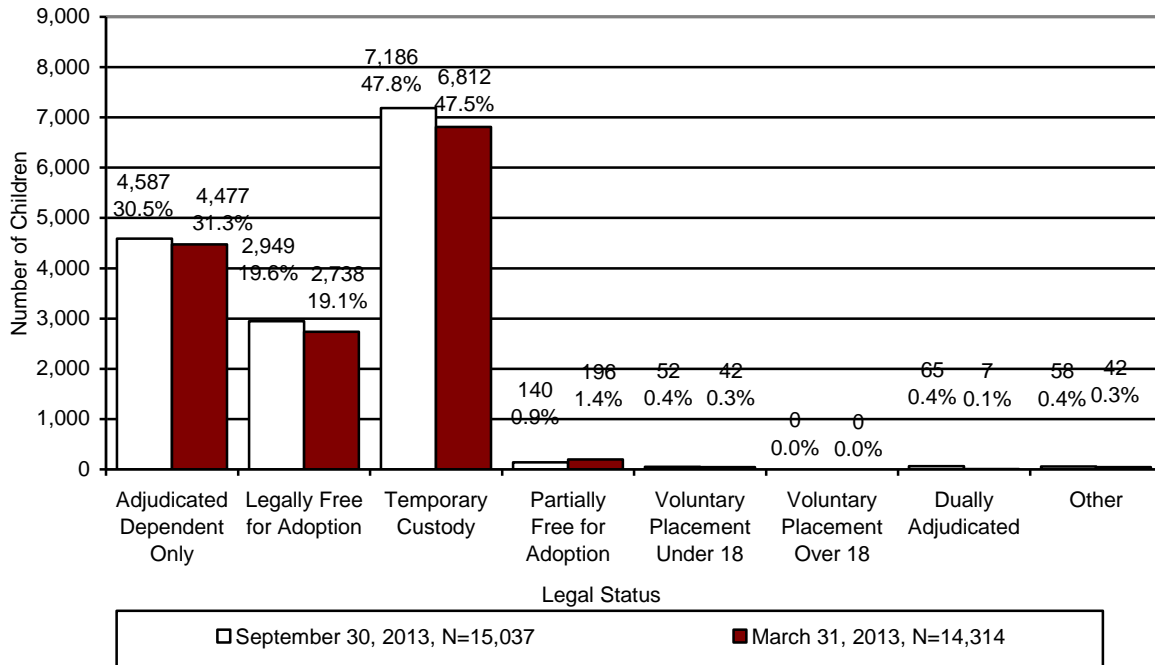
**TABLE 34
PLACEMENT INFORMATION FOR CHILDREN IN
OUT-OF-HOME CARE ON SEPTEMBER 30, 2013**

	Placements
Average	2.4
Median	1.0
Range Minimum	1
Range Maximum	52 ⁹

Chart 30 displays the legal status of the children in out-of-home care for the current and prior reporting periods. As is shown by the graph, the vast majority of children in out-of-home care fall into one of three legal status’ – adjudicated dependent, legally free for adoption, and children in the Department’s temporary custody.

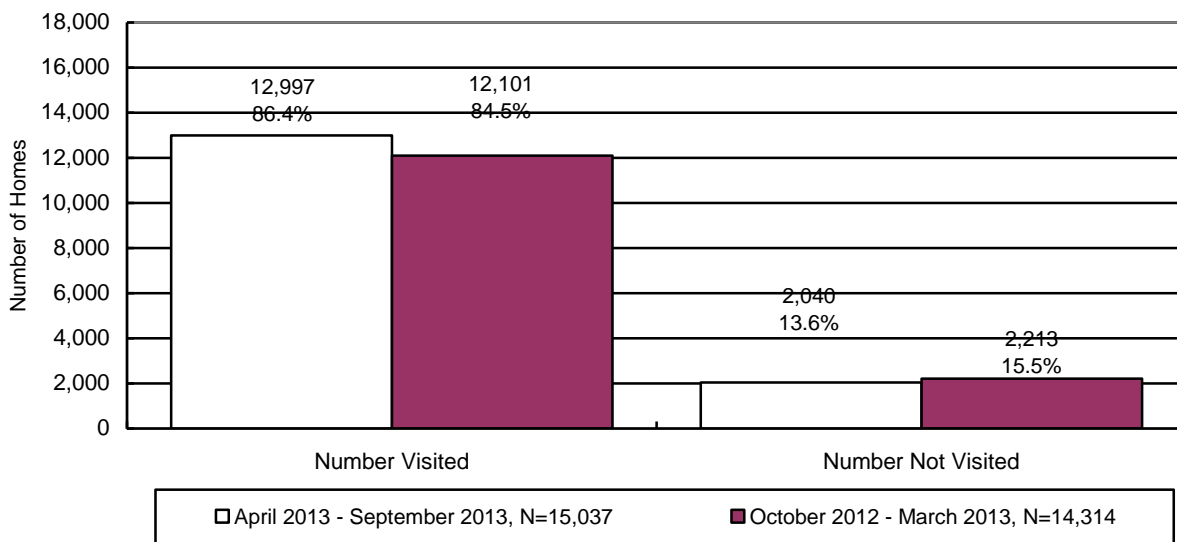
**CHART 30
CHILDREN IN OUT-OF-HOME CARE BY LEGAL STATUS**

⁹ Some children are so impacted by the severity of the abuse they have suffered that they become unable to form meaningful relationships or to respond to services. These children tend to go through multiple placements with numerous individuals and agencies.



At the end of the reporting period there were 15,037 children in out-of-home care who required visitation. Of these children, visitation was accurately documented in the automated system for 12,997 children.

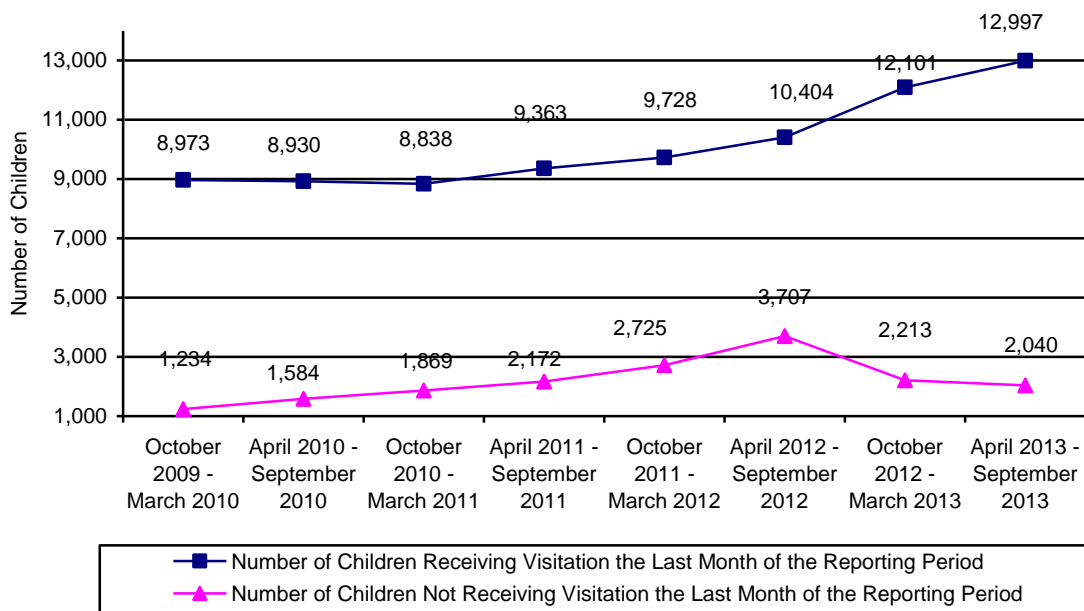
**CHART 31
THE NUMBER AND PERCENTAGE OF CHILDREN WHO RECEIVED THE REQUIRED VISITATION**



Division policy requires CPS specialists to have face-to-face contact with all parents at least once a month, including any alleged parents and parents residing outside of the child’s home where the case plan goal is family reunification. During the current reporting period, there were 2,206 parents who had a child with the case plan goal of return home. Of those parents requiring visitation, 1,157 (52.4%) received the

required visitation. This number does not reflect attempted visitation where contact with the parent(s) did not take place.

**CHART 32
NUMBER OF CHILDREN RECEIVING AND NOT RECEIVING VISITATION BY REPORTING PERIOD**



FOSTER HOME LICENSING, CLOSURES, & VISITATION

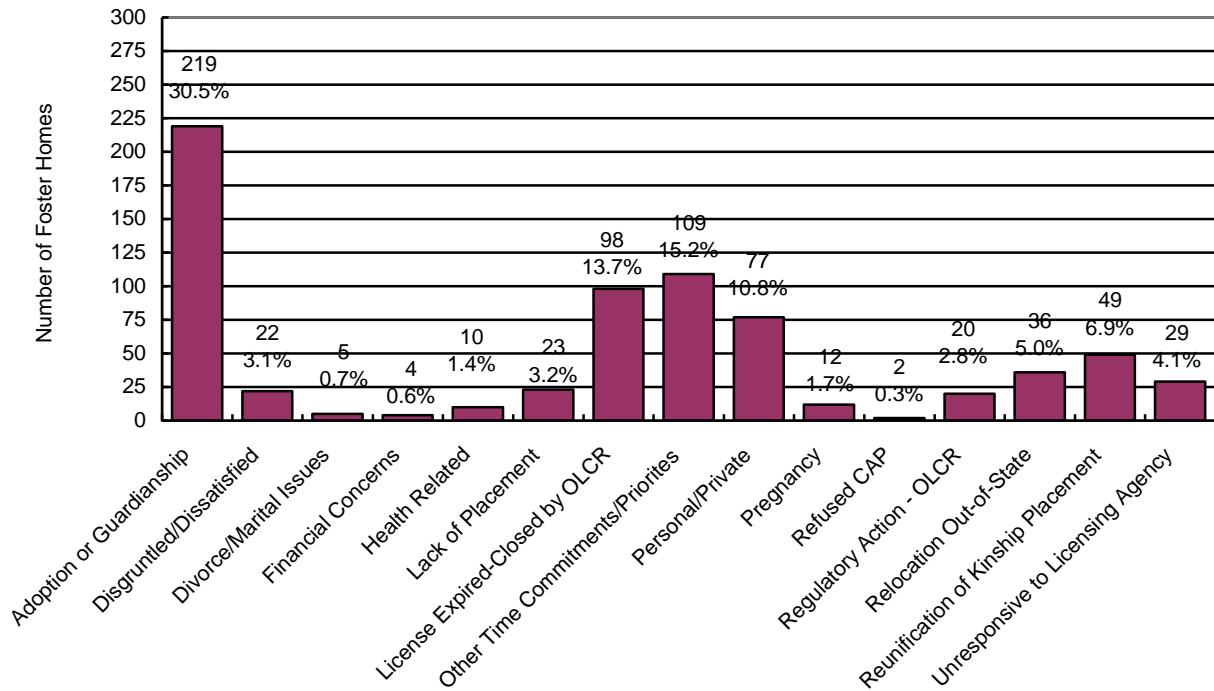
As of September 30, 2013, there were 3,900¹⁰ foster homes licensed for a total capacity of 8,573 spaces. Of the spaces, 2,019 are reported by contractors to be unavailable for placements. In addition, 1,134 spaces in available foster homes were unused spaces. This occurs when a match between the available spaces and children’s needs was not possible.

Licensed foster homes include family foster homes, professional family foster homes, respite foster homes, receiving foster homes, and developmentally disabled homes with DCYF children placed in them. Foster home licenses specify the age range, gender and maximum number of children that can be placed in a home. Foster parents, in consultation with the licensing worker, decide the type of physical, behavioral, and psychological needs of children they can effectively parent based upon their own skill level, experiences, and desires.

During the current reporting period, 717 new homes were licensed to provide foster care and 715 homes left the system. This compares to 722 new homes being licensed and 740 homes leaving the system during the prior reporting period. The following chart gives the reasons for foster home closures for the current reporting period.

**CHART 33
REASON FOR FOSTER HOME CLOSURE FOR THE PERIOD OF
APRIL 1, 2013 THROUGH SEPTEMBER 30, 2013**

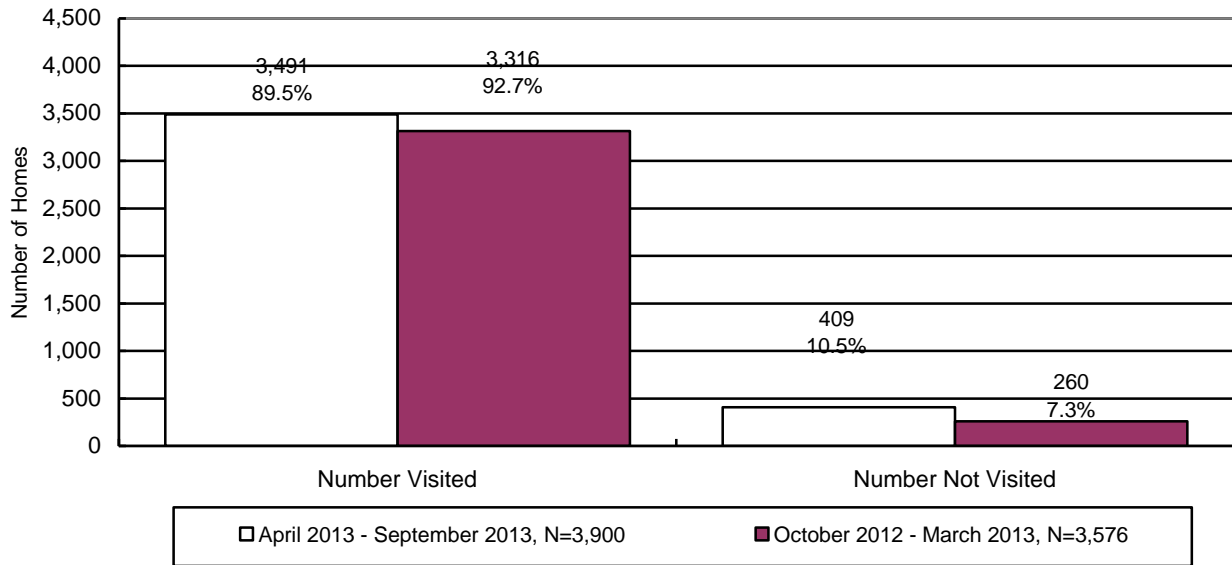
¹⁰ The number of homes cited in this report differs from the number cited by the Office of Licensing, Certification & Regulation (OLCR) due to the fact that the Division for Children, Youth & Families utilizes both foster homes managed through HRSS contracts as well as homes that are licensed for developmental disabilities, licensed by the tribes, etc.



N= 715

Chart 34 displays the number of foster homes that received the required visitation in the current and prior reporting periods. The Department believes that more foster homes received the required visitation than is indicated in the chart below. The under-reporting of foster home visitation is attributable to the lack of automation being used in reporting the foster home visitation process. The Department recognizes this as a problem and is working to correct this issue.

**CHART 34
THE NUMBER AND PERCENTAGE OF FOSTER HOMES WHO RECEIVED THE
REQUIRED VISITATION***



*Required visitations to foster homes, for license monitoring purposes, are performed by licensing case managers.

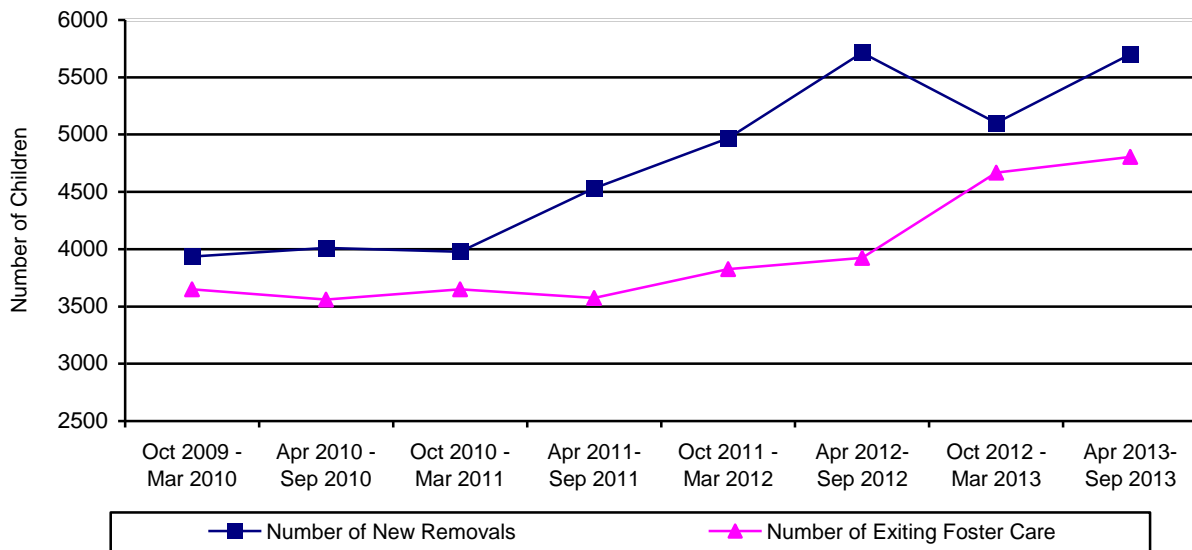
CHILDREN EXITING OUT-OF HOME CARE

Table 35 below shows the history of the number of children who left the custody of the Department. As is shown below, for the past eight reporting periods the majority of periods have shown the number of children exiting care has continued to increase.

**TABLE 35
CHILDREN EXITING OUT-OF-HOME CARE BY PERIOD**

REPORTING PERIOD	NUMBER OF CHILDREN DISCHARGED	% CHANGE OVER PRIOR PERIOD
OCTOBER 2009 – MARCH 2010	3,650	-6.3%
APRIL 2010 – SEPTEMBER 2010	3,559	-2.5%
OCTOBER 2010 – MARCH 2011	3,649	+2.5%
APRIL 2011 – SEPTEMBER 2011	3,574	-2.1%
OCTOBER 2011 – MARCH 2012	3,826	+7.1%
APRIL 2012 – SEPTEMBER 2012	3,923	+2.5%
OCTOBER 2012 – MARCH 2013	4,668	+19.0%
APRIL 2013 – SEPTEMBER 2013	4,805	+2.9%

**CHART 35
CHILDREN ENTERING AND EXITING OUT-OF-HOME CARE BY REPORTING PERIOD**



The following nine tables depict the children who exited out-of-home care by reason. The tables display the following information: reasons the child left custody, their age, their ethnicity, the number of placements each child had, and the length of time in out-of-home care.

**TABLE 36
TOTAL NUMBER OF CHILDREN EXITING DES CUSTODY FOR THE END OF THE REPORTING PERIOD ENDING ON SEPTEMBER 30, 2013**

By Age	Number	Percentage
Under 1	238	5.0%
Ages 1 to 5	1,746	36.2%
Ages 6 to 8	768	16.0%

Ages 9 to 12	741	15.4%
Ages 13 to 17	920	19.2%
18 and Over	392	8.2%
Total	4,805	100.0%
Ethnicity		
Ethnicity	Number	Percentage
Caucasian	1,784	37.2%
Hispanic	1,735	36.1%
African American	655	13.6%
American Indian	337	7.0%
Asian	71	1.5%
Other	223	4.6%
Total	4,805	100.0%
By Number of Placements		
By Number of Placements	Number	Percentage
One	2,501	52.1%
Two	1,150	23.9%
Three	523	10.9%
Four	282	5.9%
Five	122	2.5%
More than Five	227	4.7%
Total	4,805	100.0%
By Length of Time in Care		
By Length of Time in Care	Number	Percentage
Less than 30 Days	880	18.3%
31 Days to 12 Months	1,608	33.5%
13 to 24 Months	1,412	29.4%
More than 24 Months	905	18.8%
Total	4,805	100.0%

	Average	Median
By Age	8.6	7.5
By Number of Placements	2.1	1.0
By Months of Time in Care	15.4	12.3

**TABLE 37
NUMBER AND PERCENTAGE OF CHILDREN EXITING DES CUSTODY
FOR REASON OF "REUNIFICATION WITH PARENTS OR PRIMARY CARETAKER" FOR
THE REPORTING PERIOD ENDING SEPTEMBER 30, 2013**

By Age	Number	Percentage
Under 1	188	6.9%

Ages 1 to 5	950	34.9%
Ages 6 to 8	503	18.5%
Ages 9 to 12	480	17.7%
Ages 13 to 17	595	21.9%
18 and Over	2	0.1%
Total	2,718	100.0%
Ethnicity		
Ethnicity	Number	Percentage
Caucasian	988	36.3%
Hispanic	976	35.9%
African American	342	12.6%
American Indian	189	7.0%
Asian	52	1.9%
Other	171	6.3%
Total	2,718	100.0%
By Number of Placements		
By Number of Placements	Number	Percentage
One	1,586	58.3%
Two	671	24.7%
Three	261	9.6%
Four	123	4.5%
Five	40	1.5%
More than Five	37	1.4%
Total	2,718	100.0%
By Length of Time in Care		
By Length of Time in Care	Number	Percentage
Less than 30 Days	759	27.9%
31 Days to 12 Months	1,275	46.9%
13 to 24 Months	578	21.3%
More than 24 Months	106	3.9%
Total	2,718	100.0%

	Average	Median
By Age	8.0	7.2
By Number of Placements	1.7	1.0
By Months of Time in Care	8.4	7.6

**TABLE 38
NUMBER AND PERCENTAGE OF CHILDREN EXITING DES CUSTODY
FOR REASON OF "LIVING WITH OTHER RELATIVES" FOR THE REPORTING PERIOD
ENDING SEPTEMBER 30, 2013**

By Age	Number	Percentage
Under 1	1	2.9%

Ages 1 to 5	15	42.8%
Ages 6 to 8	4	11.4%
Ages 9 to 12	8	22.9%
Ages 13 to 17	7	20.0%
18 and Over	0	0.0%
Total	35	100.0%
Ethnicity		
Ethnicity	Number	Percentage
Caucasian	16	45.7%
Hispanic	8	22.9%
African American	6	17.1%
American Indian	5	14.3%
Asian	0	0.0%
Other	0	0.0%
Total	35	100.0%
By Number of Placements		
By Number of Placements	Number	Percentage
One	34	97.1%
Two	0	0.0%
Three	0	0.0%
Four	1	2.9%
Five	0	0.0%
More than Five	0	0.0%
Total	35	100.0%
By Length of Time in Care		
By Length of Time in Care	Number	Percentage
Less than 30 Days	32	91.4%
31 Days to 12 Months	3	8.6%
13 to 24 Months	0	0.0%
More than 24 Months	0	0.0%
Total	35	100.0%

	Average	Median
By Age	7.8	7.6
By Number of Placements	0.8	1.0
By Months of Time in Care	0.7	0.1

**TABLE 39
NUMBER AND PERCENTAGE OF CHILDREN EXITING DES
CUSTODY FOR REASON OF "ADOPTION" FOR THE REPORTING PERIOD
ENDING SEPTEMBER 30, 2013**

By Age	Number	Percentage
Under 1	28	2.3%

Ages 1 to 5	690	56.8%
Ages 6 to 8	205	16.9%
Ages 9 to 12	184	15.1%
Ages 13 to 17	106	8.7%
18 and Over	2	0.2%
Total	1,215	100.0%
Ethnicity		
Ethnicity	Number	Percentage
Caucasian	469	38.6%
Hispanic	477	39.2%
African American	176	14.5%
American Indian	57	4.7%
Asian	13	1.1%
Other	23	1.9%
Total	1,215	100.0%
By Number of Placements		
By Number of Placements	Number	Percentage
One	559	46.0%
Two	333	27.4%
Three	168	13.8%
Four	84	6.9%
Five	36	3.0%
More than Five	35	2.9%
Total	1,215	100.0%
By Length of Time in Care		
By Length of Time in Care	Number	Percentage
Less than 30 Days	0	0.0%
31 Days to 12 Months	93	7.7%
13 to 24 Months	599	49.3%
More than 24 Months	523	43.0%
Total	1,215	100.0%

	Average	Median
By Age	6.0	4.7
By Number of Placements	2.1	2.0
By Months of Time in Care	24.8	22.7

**TABLE 40
NUMBER AND PERCENTAGE OF CHILDREN EXITING DES CUSTODY
FOR REASON OF "GUARDIANSHIP" FOR THE REPORTING PERIOD
ENDING SEPTEMBER 30, 2013**

By Age	Number	Percentage
Under 1	5	1.5%

Ages 1 to 5	68	20.2%
Ages 6 to 8	45	13.4%
Ages 9 to 12	62	18.5%
Ages 13 to 17	155	46.1%
18 and Over	1	0.3%
Total	336	100.0%
Ethnicity		
Ethnicity	Number	Percentage
Caucasian	125	37.2%
Hispanic	125	37.2%
African American	42	12.5%
American Indian	36	10.7%
Asian	2	0.6%
Other	6	1.8%
Total	336	100.0%
By Number of Placements		
By Number of Placements	Number	Percentage
One	193	57.5%
Two	66	19.6%
Three	29	8.6%
Four	22	6.5%
Five	11	3.3%
More than Five	15	4.5%
Total	336	100.0%
By Length of Time in Care		
By Length of Time in Care	Number	Percentage
Less than 30 Days	39	11.6%
31 Days to 12 Months	113	33.6%
13 to 24 Months	136	40.5%
More than 24 Months	48	14.3%
Total	336	100.0%

	Average	Median
By Age	11.0	12.2
By Number of Placements	2.0	1.0
By Months of Time in Care	14.8	13.5

**TABLE 41
NUMBER AND PERCENTAGE OF CHILDREN EXITING DES CUSTODY
FOR REASONS OF "REACHING AGE OF MAJORITY" FOR THE REPORTING PERIOD
ENDING SEPTEMBER 30, 2013**

By Age	Number	Percentage
Under 1	0	0.0%

Ages 1 to 5	0	0.0%
Ages 6 to 8	0	0.0%
Ages 9 to 12	0	0.0%
Ages 13 to 17	4	1.1%
18 and Over	366	98.9%
Total	370	100.0%
Ethnicity		
Ethnicity	Number	Percentage
Caucasian	154	41.5%
Hispanic	115	31.1%
African American	72	19.5%
American Indian	15	4.1%
Asian	3	0.8%
Other	11	3.0%
Total	370	100.0%
By Number of Placements		
By Number of Placements	Number	Percentage
One	60	16.2%
Two	55	14.9%
Three	52	14.1%
Four	43	11.6%
Five	33	8.9%
More than Five	127	34.3%
Total	370	100.0%
By Length of Time in Care		
By Length of Time in Care	Number	Percentage
Less than 30 Days	5	1.4%
31 Days to 12 Months	76	20.5%
13 to 24 Months	78	21.1%
More than 24 Months	211	57.0%
Total	370	100.0%

	Average	Median
By Age	18.8	18.2
By Number of Placements	5.6	4.0
By Months of Time in Care	39.7	28.9

**TABLE 42
NUMBER AND PERCENTAGE OF CHILDREN EXITING DES CUSTODY
FOR REASON OF "TRANSFER TO ANOTHER AGENCY" FOR THE REPORTING PERIOD
ENDING SEPTEMBER 30, 2013**

By Age	Number	Percentage
Under 1	11	16.2%

Ages 1 to 5	19	27.9%
Ages 6 to 8	11	16.2%
Ages 9 to 12	6	8.8%
Ages 13 to 17	20	29.4%
18 and Over	1	1.5%
Total	68	100.0%
Ethnicity		
Ethnicity	Number	Percentage
Caucasian	15	22.1%
Hispanic	11	16.2%
African American	3	4.4%
American Indian	32	47.0%
Asian	0	0.0%
Other	7	10.3%
Total	68	100.0%
By Number of Placements		
By Number of Placements	Number	Percentage
One	42	61.7%
Two	16	23.5%
Three	8	11.8%
Four	1	1.5%
Five	0	0.0%
More than Five	1	1.5%
Total	68	100.0%
By Length of Time in Care		
By Length of Time in Care	Number	Percentage
Less than 30 Days	29	42.6%
31 Days to 12 Months	28	41.2%
13 to 24 Months	8	11.8%
More than 24 Months	3	4.4%
Total	68	100.0%

	Average	Median
By Age	8.1	6.8
By Number of Placements	1.6	1.0
By Months of Time in Care	6.0	2.4

**TABLE 43
 NUMBER AND PERCENTAGE OF CHILDREN EXITING DES CUSTODY
 FOR REASON OF "RUNAWAY" FOR THE REPORTING PERIOD
 ENDING SEPTEMBER 30, 2013**

By Age	Number	Percentage
Under 1	1	1.9%

Ages 1 to 5	3	5.6%
Ages 6 to 8	0	0.0%
Ages 9 to 12	0	0.0%
Ages 13 to 17	31	57.3%
18 and Over	19	35.2%
Total	54	100.0%
Ethnicity		
Ethnicity	Number	Percentage
Caucasian	15	27.8%
Hispanic	19	35.2%
African American	14	25.8%
American Indian	1	1.9%
Asian	1	1.9%
Other	4	7.4%
Total	54	100.0%
By Number of Placements		
By Number of Placements	Number	Percentage
One	23	42.5%
Two	9	16.7%
Three	3	5.6%
Four	6	11.1%
Five	2	3.7%
More than Five	11	20.4%
Total	54	100.0%
By Length of Time in Care		
By Length of Time in Care	Number	Percentage
Less than 30 Days	15	27.8%
31 Days to 12 Months	15	27.8%
13 to 24 Months	12	22.2%
More than 24 Months	12	22.2%
Total	54	100.0%

	Average	Median
By Age	16.5	17.7
By Number of Placements	3.4	2.0
By Months of Time in Care	17.3	12.2

**TABLE 44
NUMBER AND PERCENTAGE OF CHILDREN EXITING DES CUSTODY
FOR REASON OF "DEATH OF CHILD" FOR THE REPORTING PERIOD ENDING
SEPTEMBER 30, 2013**

By Age	Number	Percentage
Under 1	4	44.5%

Ages 1 to 5	1	11.1%
Ages 6 to 8	0	0.0%
Ages 9 to 12	1	11.1%
Ages 13 to 17	2	22.2%
18 and Over	1	11.1%
Total	9	100.0%
Ethnicity		
Ethnicity	Number	Percentage
Caucasian	2	22.2%
Hispanic	4	44.5%
African American	0	0.0%
American Indian	2	22.2%
Asian	0	0.0%
Other	1	11.1%
Total	9	100.0%
By Number of Placements		
By Number of Placements	Number	Percentage
One	4	44.5%
Two	0	0.0%
Three	2	22.2%
Four	2	22.2%
Five	0	0.0%
More than Five	1	11.1%
Total	9	100.0%
By Length of Time in Care		
By Length of Time in Care	Number	Percentage
Less than 30 Days	1	11.1%
31 Days to 12 Months	5	55.6%
13 to 24 Months	1	11.1%
More than 24 Months	2	22.2%
Total	9	100.0%

	Average	Median
By Age	7.7	2.1
By Number of Placements	4.6	3.0
By Months of Time in Care	20.3	7.4

**TABLE 45
CHILDREN EXITING CARE FOR REASON OF DEATH BY CAUSE OF DEATH,
PLACEMENT TYPE AT TIME OF DEATH, AND COUNTY**

COUNTY	CAUSE OF DEATH	TYPE OF PLACEMENT AT TIME OF DEATH
Graham	Heart failure while being treated for	Family Foster Care

	respiratory failure	
Graham	Intraparenchymal hemorrhage	Hospice
Maricopa	Cardiac arrest	Group Home
Maricopa	Drowning	Family Foster Home – Relative
Maricopa	Undetermined – found unresponsive in the community	Runaway
Maricopa	Undetermined – Potential asphyxiation	Family Foster Home – Relative
Pima	Klebsiella septic shock	DDD Foster Care
Pima	Physical injuries resulting in death	Family Foster Home (Unlicensed Relative)
Yavapai	Suicide	Runaway

**TABLE 46
NUMBER OF CHILDREN IN AN OPEN CASE WHO DIED AS A RESULT OF ALLEGED
ABUSE AS CATEGORIZED BY THE CUSTODIAL RELATIONSHIP AND COUNTY FOR THE
PERIOD APRIL 1, 2013 THROUGH SEPTEMBER 30, 2013**

COUNTY	BIOLOGICAL PARENT(S)	OTHER FAMILY MEMBER	ADOPTIVE PARENT(S)	FOSTER CARE PARENT(S)	OTHER OUT-OF-HOME CARE PROVIDER	TOTAL	% OF TOTAL
APACHE	0	0	0	0	0	0	0%
COCHISE	0	0	0	0	0	0	0%
COCONINO	0	0	0	0	0	0	0%
GILA	0	0	0	0	0	0	0%
GRAHAM	0	0	0	0	0	0	0%
GREENLEE	0	0	0	0	0	0	0%
LA PAZ	0	0	0	0	0	0	0%
MARICOPA	9	0	0	0	0	9	69.2%
MOHAVE	0	0	0	0	0	0	0%
NAVAJO	0	0	0	0	0	0	0%
PIMA	2	0	0	1	0	3	23.1%
PINAL	0	0	0	0	0	0	0%
SANTA CRUZ	0	0	0	0	0	0	0%
YAVAPAI	0	0	0	0	0	0	0%
YUMA	0	1	0	0	0	1	7.7%
STATEWIDE	11	1	0	1	0	13	100.0%
% OF TOTAL	84.6%	7.7%	0.0%	7.7%	0.0%	100.0%	

The number of child maltreatment deaths presented in the Semi-Annual Report is not comparable to child maltreatment deaths reported on the website by the Arizona Department of Economic Security (ADES).

- ADES posts information in accordance with A.R.S. § 8-807 on child fatalities due to abuse or neglect by the child's parent, custodian or caregiver at: www.azdes.gov/cpsinfo.
- This information is posted when the information comes to ADES' attention and a final determination of the fatality due to abuse or neglect has been made by either a substantiated finding or specific criminal charges filed against a parent, guardian or caregiver for causing the fatality.
- The information that comes to ADES' attention and the determination of the fatality due to abuse or neglect may occur sometime after the actual incident for a number of reasons including a determination by a medical professional, a medical examiner, or a criminal child abuse arrest and charge of the perpetrator.

CHILDREN WITH CASE PLAN GOALS OF ADOPTION

Of the 15,037 children in out-of-home care on September 30, 2013, there were 3,311 or 22% had a case plan goal of adoption. Of those, 2,364 have been placed and another 947 have not been placed. The age and ethnicity of the children with a case plan goal of adoption is displayed in Chart 36 and Chart 37.

**TABLE 47
NUMBER OF CHILDREN WITH A PETITION FOR TERMINATION OF PARENTAL RIGHTS
BY COUNTY FOR THE PERIOD APRIL 1, 2013 THROUGH SEPTEMBER 30, 2013**

COUNTY	TERMINATION OF RIGHTS GRANTED	TERMINATION OF RIGHTS DENIED	TERMINATION OF RIGHTS GRANTED IN PART/DENIED IN PART	TERMINATION OF RIGHTS WITHDRAWN	TOTAL	% OF TOTAL
APACHE	3	0	0	0	3	0.2%
COCHISE	21	0	0	2	23	1.5%
COCONINO	6	0	0	0	6	0.4%
GILA	16	0	0	0	16	1.1%
GRAHAM	16	0	0	0	16	1.1%
GREENLEE	1	0	0	0	1	0.1%
LA PAZ	1	0	0	0	1	0.1%
MARICOPA	864	0	0	0	864	57.8%
MOHAVE	42	0	0	0	42	2.8%
NAVAJO	15	0	0	0	15	1.0%
PIMA	359	8	0	3	370	24.8%
PINAL	77	0	0	0	77	5.2%
SANTA CRUZ	3	0	0	0	3	0.2%
YAVAPAI	37	0	0	0	37	2.5%
YUMA	18	0	0	0	18	1.2%
STATEWIDE	1,479	8	0	5	1,492	100.0%
% OF TOTAL	99.2%	0.5%	0.0%	0.3%	100.0%	

The average length of time that a child with a case plan goal of “adoption” has spent in out-of-home care is 1 year 11 months. Information on the number of placements in terms of the average, median, and range for children with a case plan goal of adoption is shown below in Table 48.

**TABLE 48
PLACEMENT INFORMATION FOR CHILDREN WITH A CASE PLAN GOAL OF ADOPTION**

	Placements
Average	2.5
Median	2.0
Range Minimum	1
Range Maximum	32

CHART 36
THE PLACEMENT AND NUMBER OF CHILDREN WITH A CASE PLAN GOAL OF ADOPTION BY AGE

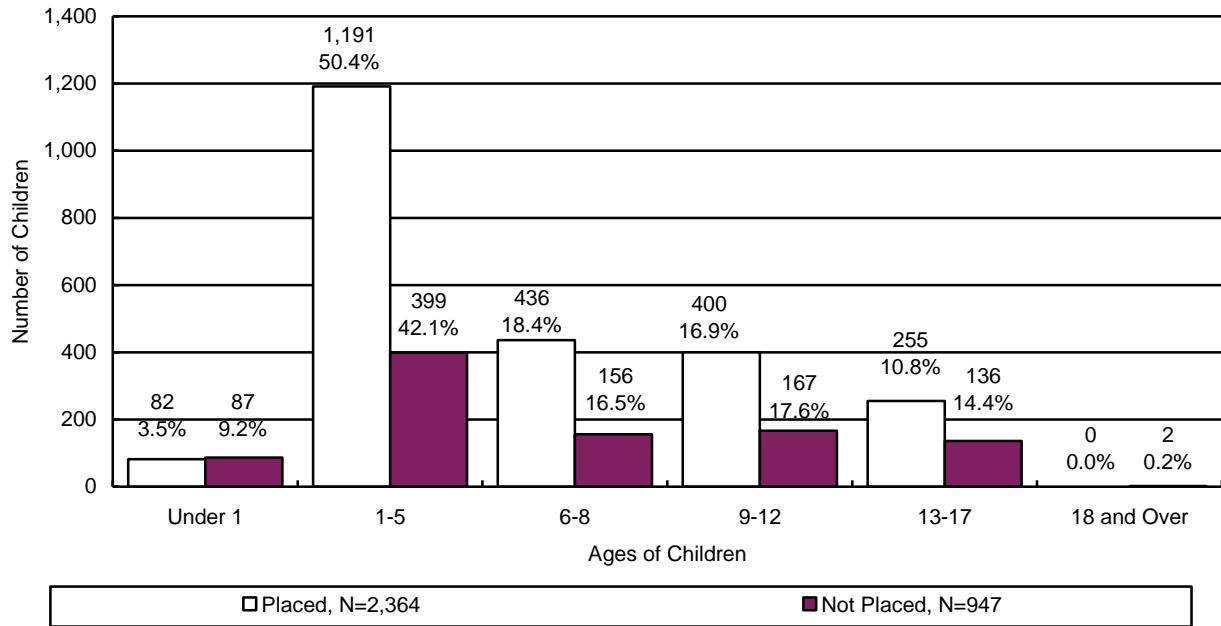


CHART 37
THE PLACEMENT AND NUMBER OF CHILDREN WITH A CASE PLAN GOAL OF ADOPTION BY ETHNICITY

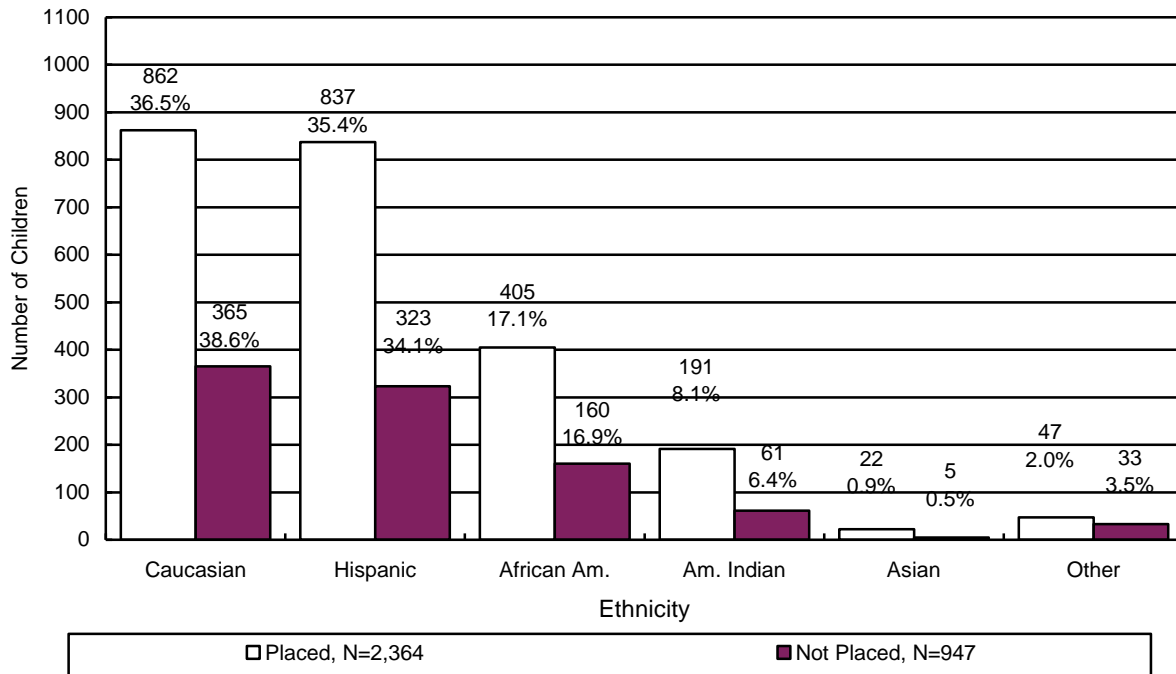
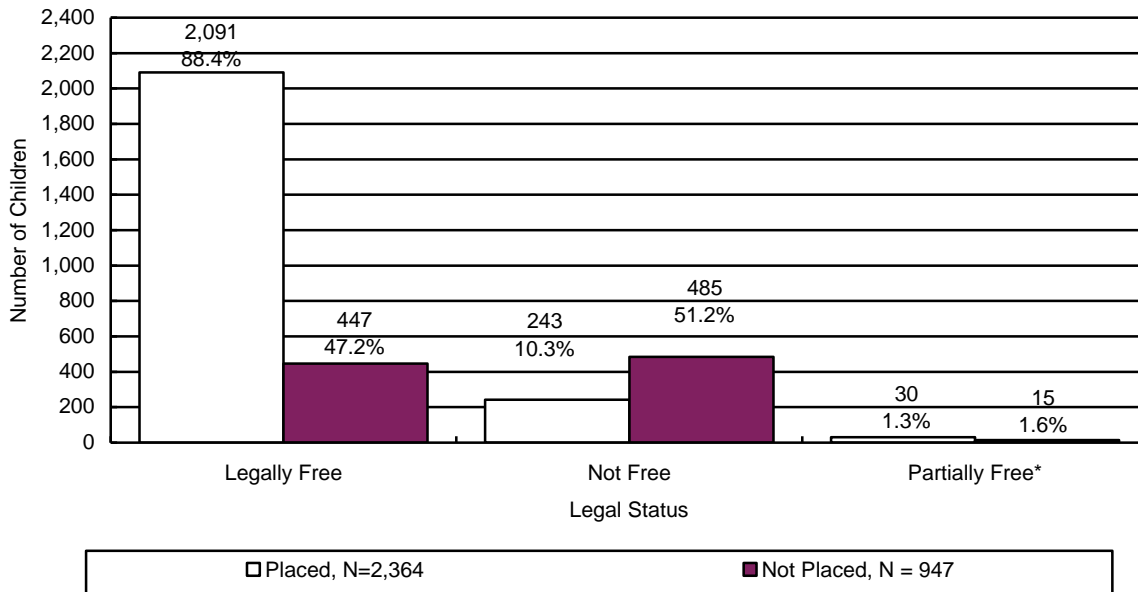
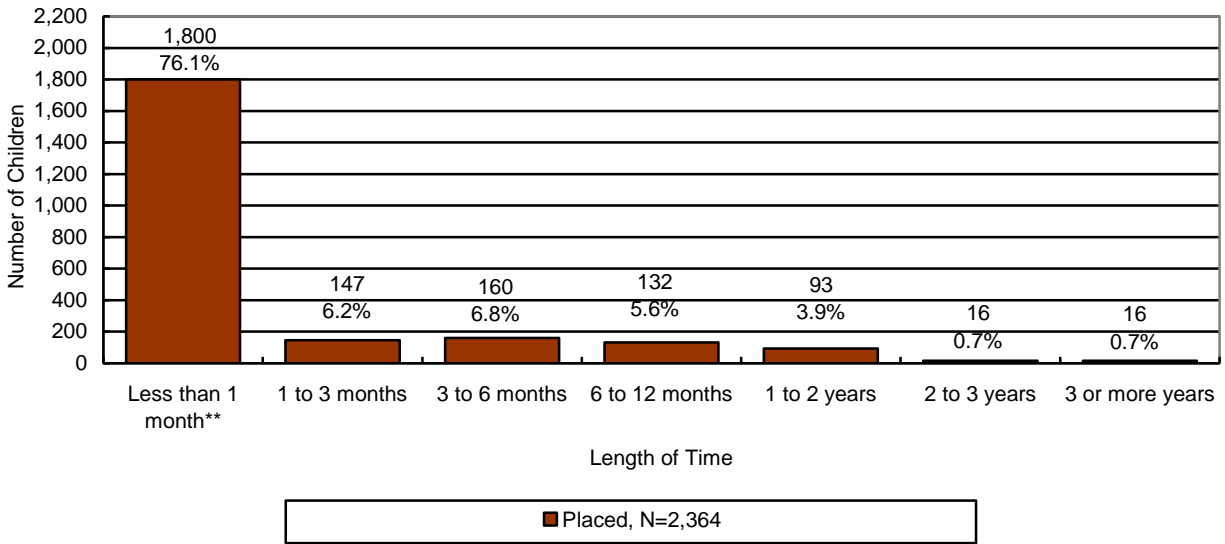


CHART 38
THE PLACEMENT AND NUMBER OF CHILDREN WITH A CASE PLAN GOAL OF ADOPTION BY LEGAL STATUS



*Partially free refers to a situation where only one of the parent’s rights has been severed.

CHART 39
THE NUMBER OF CHILDREN WITH A CASE PLAN GOAL OF ADOPTION BY LENGTH OF TIME FROM CHANGE OF CASE PLAN GOAL OF ADOPTION TO ADOPTIVE PLACEMENT



**Approximately 70 percent of children are adopted by relatives or their foster parents and are already in their prospective adoptive placement at the time the case plan goal changes to adoption.

CHART 40
THE NUMBER OF CHILDREN WITH A CASE PLAN GOAL OF ADOPTION WHO WERE IN AN ADOPTIVE PLACEMENT BY THE MARITAL STATUS OF THE ADOPTIVE PARENT

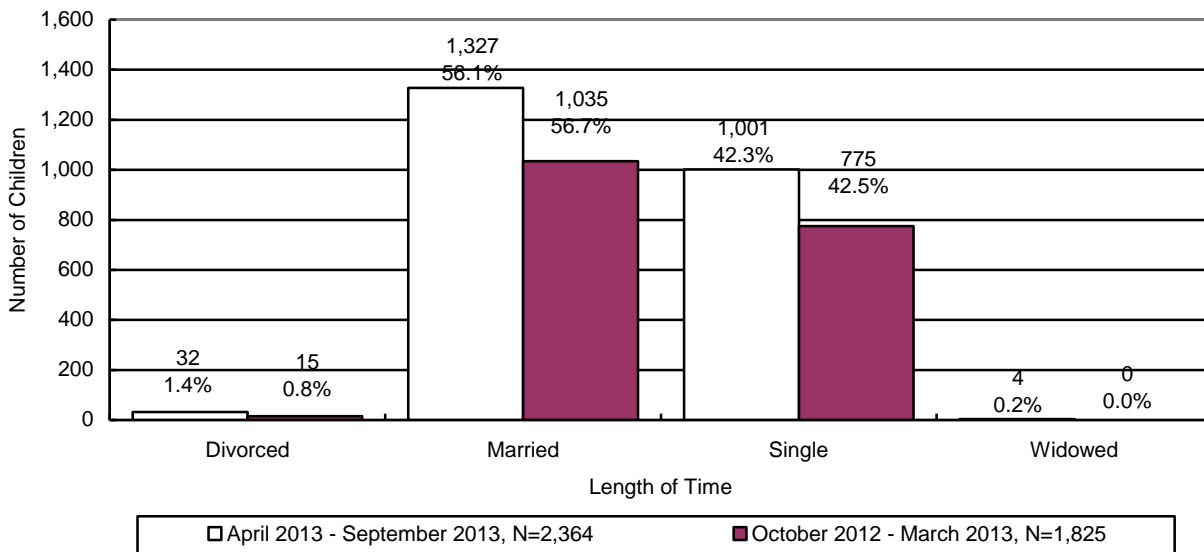
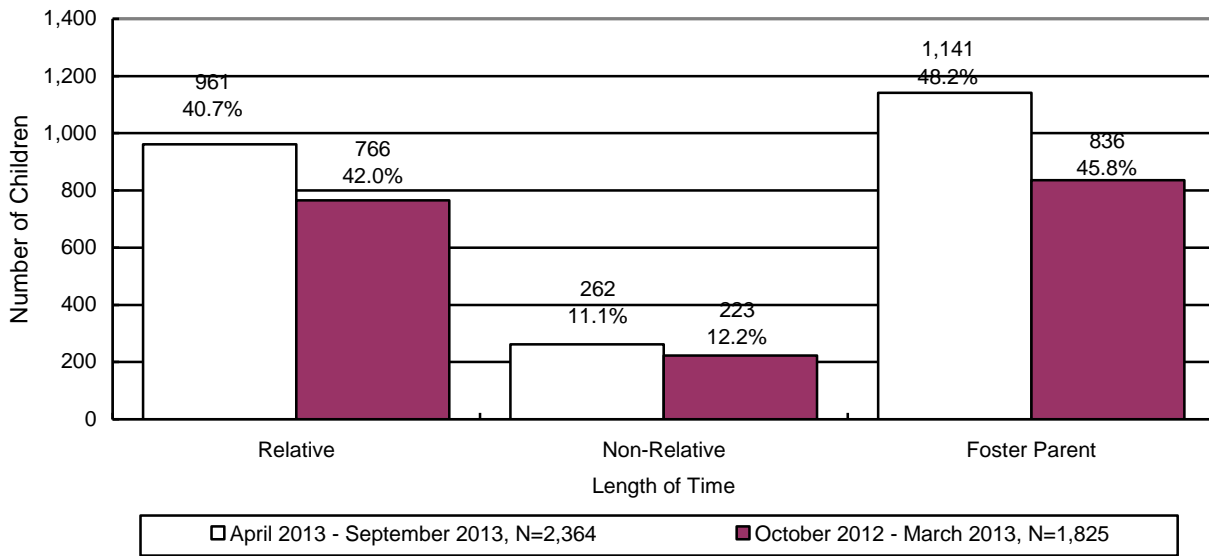


CHART 41
THE NUMBER OF CHILDREN WITH A CASE PLAN GOAL OF ADOPTION WHO WERE IN AN ADOPTIVE PLACEMENT BY THE RELATIONSHIP OF THE ADOPTIVE PARENT



DISRUPTIONS

**TABLE 49
 THE NUMBER OF CHILDREN WITH A CASE PLAN GOAL OF ADOPTION WHO WERE IN AN ADOPTIVE PLACEMENT AND DISRUPTED BY AGE AND ETHNICITY**

By Age	Number	Percentage
Under 1	0	0.0%
Ages 1 – 5	6	37.5%
Ages 6 – 8	1	6.3%
Ages 9 – 12	6	37.5%
Ages 13 – 17	3	18.7%
18 and Over	0	0.0%
Total	16	100.0%

Ethnicity	Number	Percentage
Caucasian	6	37.5%
Hispanic	8	50.0%
African American	1	6.3%
American Indian	1	6.3%
Asian	0	0.0%
Other	0	0.0%
Total	16	100.0%

CHART 42

THE NUMBER OF CHILDREN WITH A CASE PLAN GOAL OF ADOPTION WHO WERE IN AN ADOPTIVE PLACEMENT AND DISRUPTED BY THE MARITAL STATUS OF THE ADOPTIVE PARENT

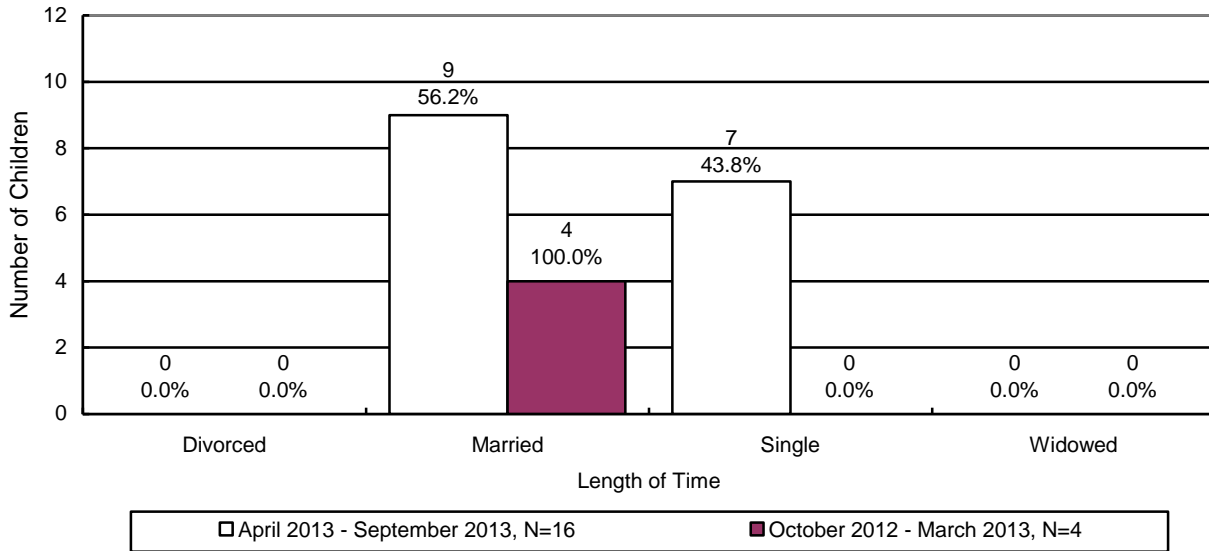
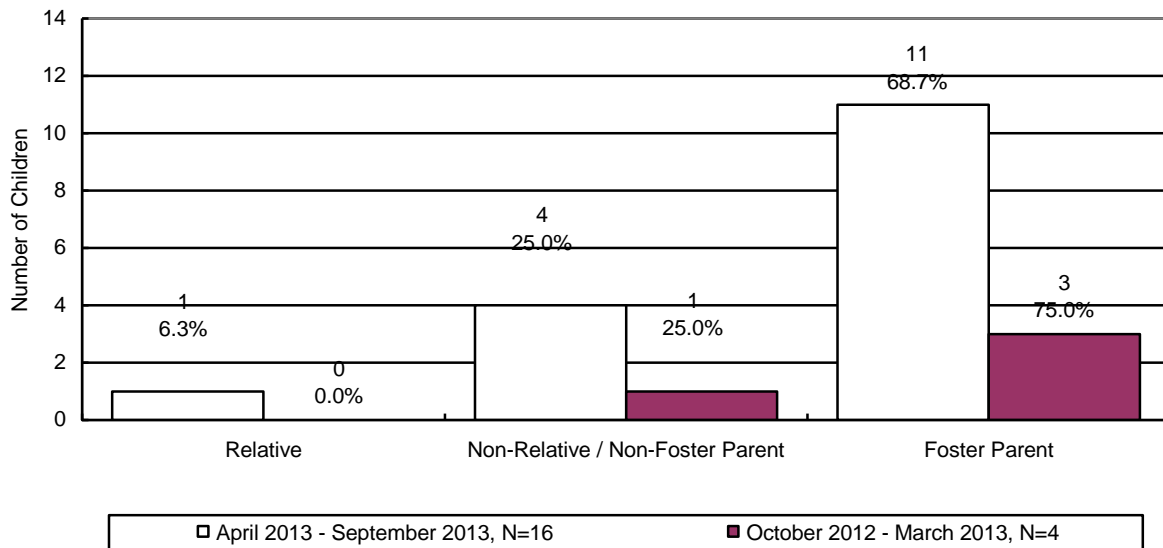


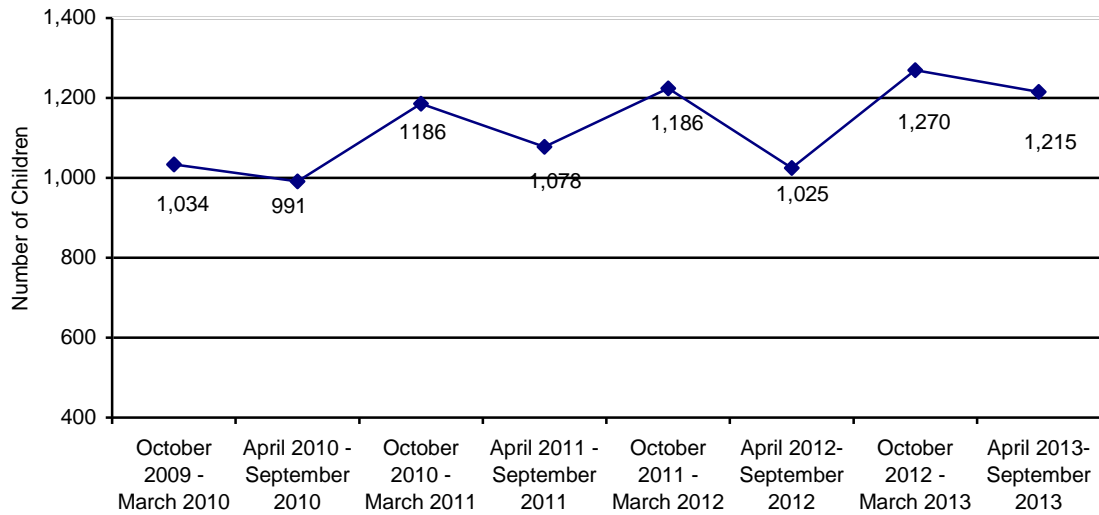
CHART 43

THE NUMBER OF CHILDREN WITH A CASE PLAN GOAL OF ADOPTION WHO WERE IN AN ADOPTIVE PLACEMENT AND DISRUPTED BY THE RELATIONSHIP OF THE ADOPTIVE PARENT



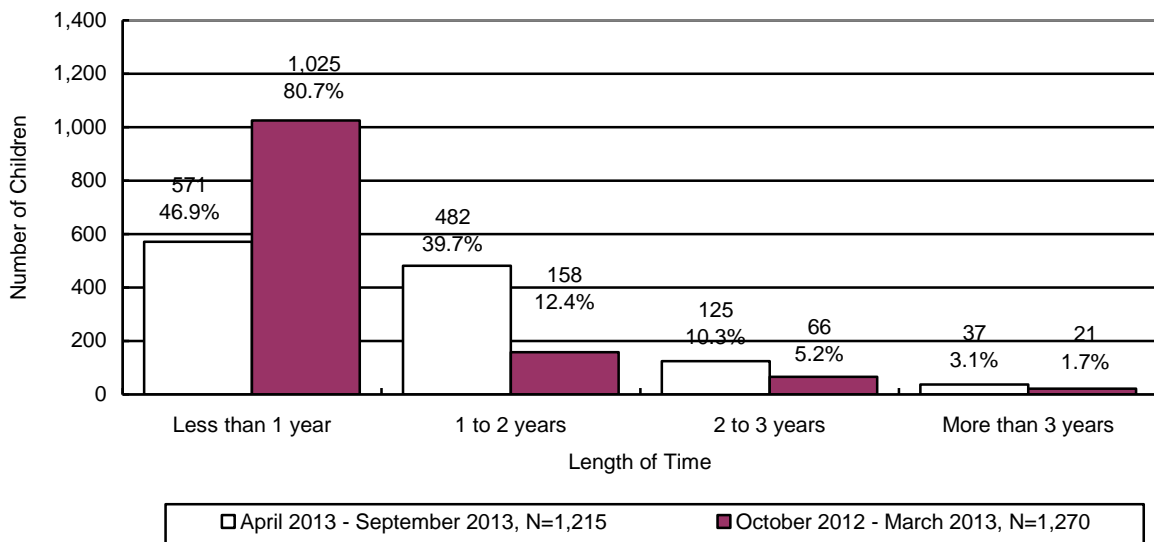
ADOPTIVE SERVICES

**CHART 44
THE NUMBER OF CHILDREN WITH A FINALIZED ADOPTION**



There were 1,215 children with a finalized adoption during the reporting period. Chart 45 displays the number of children with a finalized adoption during the reporting period by the average length of time in out-of-home placement before adoptive placement.

**CHART 45
THE NUMBER AND PERCENTAGE OF CHILDREN WITH A FINALIZED ADOPTION BY AVERAGE LENGTH OF TIME IN OUT-OF-HOME PLACEMENT BEFORE ADOPTIVE PLACEMENT**



The chart below displays the number of children with a finalized adoption by average length of time in adoptive placement before the final order of adoption.

CHART 46
THE NUMBER AND PERCENTAGE OF CHILDREN WITH A FINALIZED ADOPTION BY AVERAGE LENGTH OF TIME IN ADOPTIVE PLACEMENT BEFORE THE FINAL ORDER OF ADOPTION

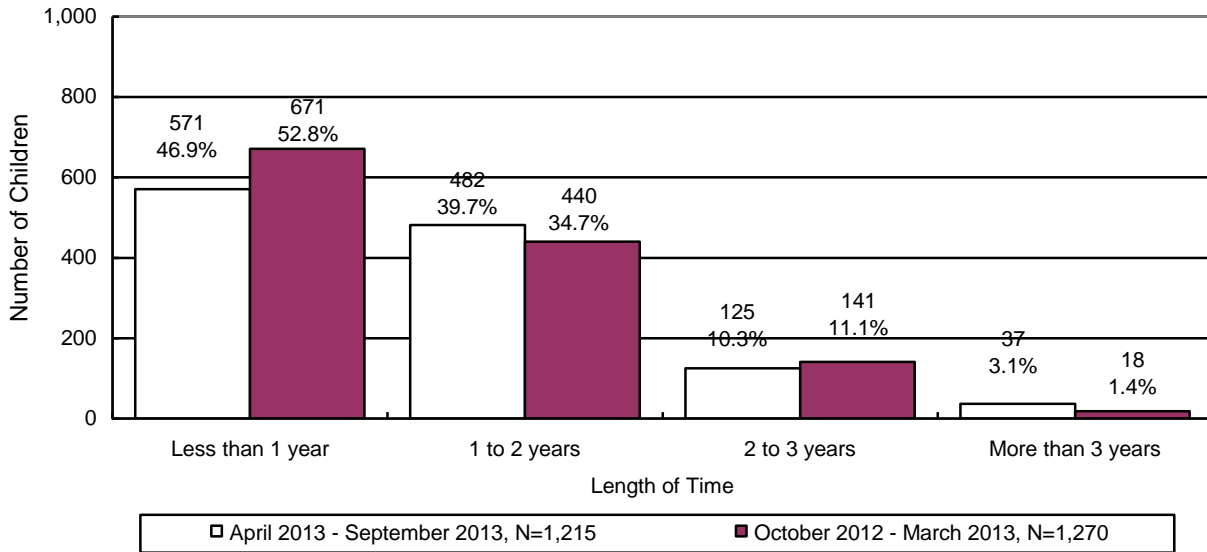


CHART 47
THE NUMBER OF CHILDREN WITH A FINALIZED ADOPTION BY THE MARITAL STATUS OF THE ADOPTIVE PARENT

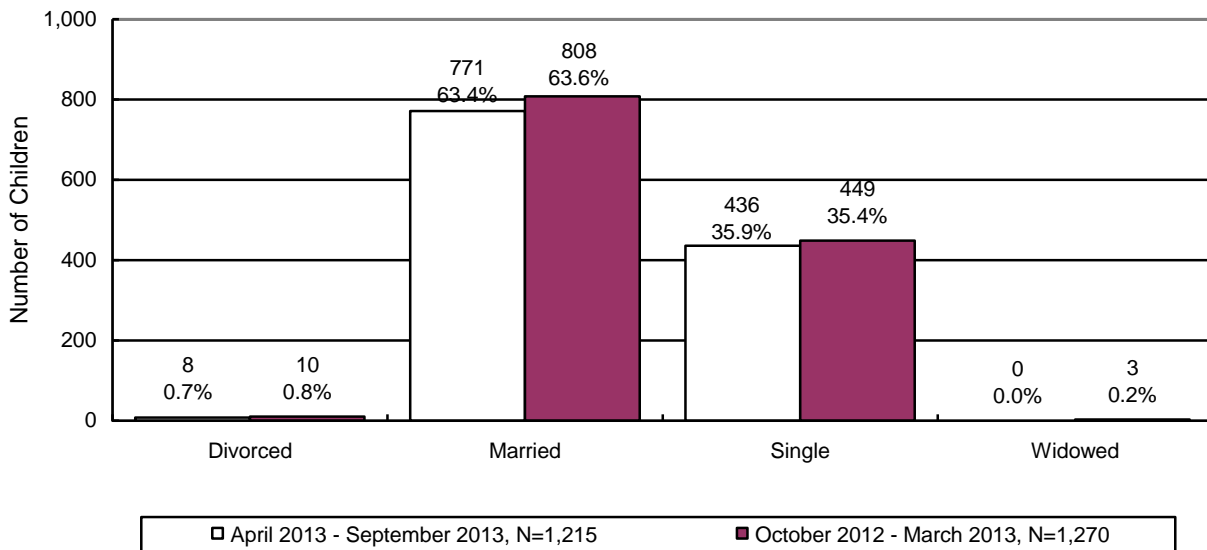


CHART 48

THE NUMBER OF CHILDREN WITH A FINALIZED ADOPTION BY THE RELATIONSHIP OF THE ADOPTIVE PARENT TO THE CHILD

