

CHILD WELFARE REPORTING REQUIREMENTS

SEMI-ANNUAL REPORT

FOR THE PERIOD OF

APRIL 1, 2014 THROUGH SEPTEMBER 30, 2014

ARIZONA REVISED STATUTES

[LAWS 2011, CHAPTER 147]

DEPARTMENT OF CHILD SAFETY

CHILD WELFARE REPORTING REQUIREMENTS

Arizona Revised Statute § 8-526 requires the Arizona Department of Child Safety (DCS) to compile information and produce a semi-annual report for the periods ending on March 31st and September 30th of each year regarding Child Welfare Services. This report is for the semi-annual reporting period beginning on April 1, 2014 and ending on September 30, 2014.

TABLE OF CONTENTS

(Reporting period: April 1, 2014 through September 30, 2014)

	<u>Page</u>
EXECUTIVE SUMMARY	4
SEMI-ANNUAL COMPARISONS	6
REPORTS OF CHILD ABUSE AND NEGLECT	
Reports by reporting period and type of child maltreatment – statewide data.....	7
Sample communications to hotline, not meeting definition of a report.....	9
Reports received by priority - statewide data.....	10
Number of reports received by priority – county specific data.....	11
Number of reports received by maltreatment – statewide data.....	12
Number of reports received by maltreatment – county specific data.....	12-13
ASSIGNMENT OF INVESTIGATIONS	
Reports assigned for investigation by priority – statewide data.....	14
Reports assigned for investigation by priority – county specific data.....	15
Reports assigned for investigation by type of maltreatment – statewide data.....	16
Reports assigned for investigation by type of maltreatment – county specific data.....	16-17
INVESTIGATIONS OF CHILD ABUSE AND NEGLECT	
Reports not responded to by priority – county specific data.....	18
Investigations by priority – investigation open – statewide data.....	19
Investigations by priority – investigation open – county specific data.....	20
Investigations by type of child maltreatment – investigation open – statewide data.....	21
Investigations by type of child maltreatment – investigation open – county specific data.....	21-22
Reports where removal occurred – county specific data.....	23-24
COMPLETED INVESTIGATIONS	
Substantiation rate by reporting period.....	25
Investigations by priority – proposed substantiated reports – statewide data.....	26
Investigations by priority – proposed substantiated reports – county specific data.....	26-27
Investigations by type of child maltreatment – proposed substantiated reports – statewide data.....	27
Investigations by type of child maltreatment – proposed substantiated reports – county specific data.....	28
Investigations by priority – substantiated reports – statewide data.....	29

TABLE OF CONTENTS (continued)
 (Reporting period: April 1, 2014 through September 30, 2014)

	<u>Page</u>
Investigations by priority – substantiated reports county specific data.....	29-30
Investigations by type of child maltreatment – substantiated reports – statewide data.....	30
Investigations by type of child maltreatment – substantiated reports – county specific data.....	31
Investigations by priority – unsubstantiated reports – statewide data.....	32
Investigations by priority – unsubstantiated reports – county specific data.....	32-33
Investigations by type of child maltreatment – unsubstantiated reports – statewide data..	33
Investigations by type of child maltreatment – unsubstantiated reports – county specific data.....	34
 SAFE HAVEN INFANTS	
Number of Safe Haven infants delivered during reporting period.....	35
 CHILDREN ENTERING OUT-OF-HOME CARE	
Total children entering out-of-home care.....	35
New entries by county – children under 18 years voluntary placement.....	36
New entries by county.....	37-38
New entries – statewide data.....	39
 CHILDREN IN OUT-OF-HOME CARE	
Children in out-of-home care by reporting period.....	40
Children in group homes ages 0 through 6.....	41
Children in shelter ages 0 through 3.....	41
The average length of stay in a shelter placement for children ages 0-3 who were in a shelter placement on the last day of the reporting period.....	42
All children in care by age and ethnicity.....	42-43
All children in care by case plan goal and placement type.....	43-44
All children in care by placement type and age.....	45
Children in shelter or receiving homes for more than 21 days.....	46
Children in out-of-home care by length of time in care.....	46
Children in out-of-home care by legal status.....	47
Children receiving and not receiving required visitation.....	48
 FOSTER HOME LICENSING, CLOSURES, AND VISITATIONS	
Foster homes licensed.....	49
Child bed spaces available.....	49
Foster homes closed and reason for closure	49
Number of foster homes receiving the required visitation.....	50
 CHILDREN EXITING OUT-OF-HOME CARE	
Semi-Annual comparisons of total number exiting care – for all reasons.....	51
Total number exiting care.....	52
Total number exiting care – for reason of reunification with parents.....	53
Total number exiting care – for reason of living with other relatives.....	54
Total number exiting care – for reason of adoption.....	55
Total number exiting care – for reason of guardianship.....	56

TABLE OF CONTENTS (continued)
 (Reporting period: April 1, 2014 through September 30, 2014)

	<i>Page</i>
Total number exiting care – for reason of reaching age of majority.....	57
Total number exiting care – for reason of transfer to another agency.....	58
Total number exiting care – for reason of runaway.....	59
Total number exiting care – for reason of death of child.....	60
Total number exiting care – by cause of death.....	61
Total number exiting for reason of death of child – with alleged abuse.....	61
 CHILDREN WITH CASE PLAN GOALS OF ADOPTION	
Number of children with a petition for termination of parental rights.....	62
The placement and number of children with case plan goals of adoption by age.....	63
The placement and number of children with case plan goals of adoption by ethnicity.....	64
The placement and number of children with case plan goals of adoption by legal status..	64
Number of children – length of time from change of case plan goals of adoption to adoptive placement.....	65
Number of children in an adoptive placement by the marital status of the adoptive parent.....	65
Number of children in an adoptive placement by the relationship of the adoptive parent.....	66
 DISRUPTIONS	
Number of children with a case plan goal of adoption in an adoptive placement and disrupted by age and ethnicity.....	66
Number of children with a case plan goal of adoption in an adoptive placement and disrupted by the marital status of the adoptive parent.....	67
Number of children with a case plan goal of adoption in an adoptive placement and disrupted by the relationship of the adoptive parent.....	67
 ADOPTIVE SERVICES	
Number of children with a finalized adoption.....	68
Number of children with a finalized adoption by average length of time in out-of-home placement before adoptive placement.....	68
Number of children with a finalized adoption by average length of time in adoptive placement before the final order of adoption.....	69
Number of Children with a finalized adoption by the marital status of the adoptive parent.....	69
Number of children with a finalized adoption by the relationship of the adoptive parent.....	70

Executive Summary

The Arizona Department of Child Safety is pleased to publish this semi-annual report for April 2014 through September 2014 in compliance with A.R.S. § 8-526. This report is intended to provide its readers an opportunity to review the impact of the Department's process improvements in relation to key performance indicators.

During the reporting period of April through September 2014, the Department of Child Safety was created as a permanent, stand-alone agency with the express mission of safeguarding Arizona's abused and neglected children. The legislation enacted on May 29, 2014 included additional funding to cover the cost of additional staff, including case specialists and case aides as well as administrative and operational support staff needed to establish the new agency.

The data contained within this Semi-Annual Report assists with identifying where continued focus is needed by the Department, stakeholders, policy makers, and advocacy groups. By working collaboratively to address the needs of children and to prevent child abuse, additional targeted resources and strategies that are put in place to improve outcomes for children will be implemented in a more coordinated and timely manner.

Child Abuse Hotline and Investigations

The statewide Child Abuse Hotline received 25,076 calls that met the statutory criteria for a report. Of the 25,076 reports subject to substantiation during this reporting period, the preliminary number of reports that were substantiated is 1,737 (7%). An additional 1,275 were proposed for substantiation by child welfare specialists and are currently awaiting the results of the appeals process. Over time, the number of substantiated and proposed substantiated reports associated with this time period will increase as investigation findings are entered into CHILDS.

Children in Out-of-Home Care

The Department remains committed to working with the community to keep children safe and prevent the need for children to be removed from their homes. Notwithstanding this commitment, the number of children in out-of-home care increased from 15,751 in the prior reporting period to 16,990 in September 2014. Approximately 25% of reports result in removals and about 80% of all reports into the Hotline are due to allegations of neglect. The Department is focusing on reducing the number of children being removed from their home by creating a "risk-and-needs assessment" that will be vital to tailoring specific responses to neglect reports.

The Department continues to make tremendous strides in placing children who have been removed from their home in the most family-like setting possible. In September 2014, 13,820 children – or approximately 81.3 percent of all children in out-of-home care – were placed with relatives or licensed foster parents. An additional 35 children were placed with their parents on a trial home visit and 443 youth were residing in independent living settings. Efforts to increase the number of licensed foster parents who are able to meet the needs of children requiring out-of-home placement resulted in 756 new homes being licensed during the reporting period.

The state requires monthly face-to-face visitation with children in foster care. The current report shows that 87.4 percent of the children in foster care received their visitation during the last month of the reporting period. There is a strong correlation between caseworker visits with children and positive outcomes for these children, such as achieving permanency and other indicators of child well-being. The Department continues to make efforts to improve our rate of visitation.

Permanency for Children

The Department continues to work toward achieving permanency for children placed in out-of-home care. Arizona is a national leader in the number of finalized adoptions. The total number of children achieving permanency through adoption was 1,552 during this reporting period, compared to 1,215 during the same reporting period last year.

Challenges

The Department continues to face both workload and process challenges in its efforts to ensure safety and promote permanency for abused and neglected children. Examples of the more pressing challenges the Department continues to face include:

- Increased number of children in out-of-home care.
- Hiring newly authorized staff and retaining trained and qualified staff.
- Complex family situations as noted by staff who conduct investigations and work with families.

As noted previously, the legislation enacted to create the Department included funding to increase the number of case specialists. Hiring these specialists during fiscal year 2015 has presented a significant challenge to the Department, and as these staff are hired, the challenge to retain them will become even greater.

Additionally, the Department continues to develop strategies to mitigate challenges that include:

- The high prevalence of substance abuse in clients which exacerbates client problems.
- The recruitment of foster and adoptive homes for youth ages 12 to 18 years old and sibling groups.

The Department continues to assess processes and program controls to identify ways to address these challenges. Solutions will include partnering with the community and stakeholders to ensure that the safety and wellbeing of the children is always the top priority. The Department continues to work in partnership with the federal government to meet the federal Child and Family Service Review (CFSR) standards to improve outcomes for the children and families it serves.

Semi-Annual Comparisons

	Oct 2010 through Mar 2011	Apr 2011 through Sep 2011	Oct 2011 through Mar 2012	Apr 2012 through Sep 2012	Oct 2012 through Mar 2013	Apr 2013 through Sep 2013	Oct 2013 through Mar 2014	Apr 2014 through Sep 2014
Number of Reports Received	17,586	19,666	20,466	21,625	22,161	22,032	22,956	25,076
Number of Reports Substantiated ¹	2,274	2,522	2,748	2,809	2,588	2,704	3,190	1,739
Substantiation Rate	13%	15%	14%	14%	13%	12%	14%	7%
Number of Reports Investigated & Closed	8,481	9,953	10,345	9,168	10,923	11,212	11,392	12,038
Number of Reports Responded to	17,378	19,245	19,274	20,413	20,253	20,122	22,162	24,435
Number of new removals	3,978	4,531	4,968	5,716	5,101	5,702	5,701	6,461
Number of new removals with Voluntary under 18	192	155	150	116	97	118	90	189
Number of Children in Out-of-Home Care on the Last Day of Reporting Period	10,707	11,535	12,453	14,111	14,314	15,037	15,751	16,990
Number of Children in Shelter for More than 21 Days	534	842	713	764	792	824	802	868
Number and Percentage of Children Receiving Visitation In the Last Month of Reporting Period	8,838 (82.5%)	9,363 (81.2%)	9,728 (78.1%)	10,404 (73.7%)	12,101 (84.5%)	12,997 (86.4%)	13,818 (87.7%)	14,846 (87.4%)
Number and Percentage of Children not Receiving Visitation	1,869 (17.5%)	2,172 (18.8%)	2,725 (21.9%)	3,707 (26.3%)	2,213 (15.5%)	2,040 (13.6%)	1,933 (12.3%)	2,144 (12.6%)
Number and Percentage of Parents Receiving Visitation	1,144 (57.3%)	994 (54.5%)	1,081 (57.1%)	1,017 (51.2%)	1,058 (50.9%)	1,157 (52.4%)	1,344 (53.8%)	1,315 (52.0)
Number of Licensed Foster Homes ²	3,595	3,496	3,480	3,748	3,516	3,900	4,329	4,397
Number of Foster Home Spaces Available to DCYF	8,483	8,191	8,572	7,716	8,579	8,573	9,049	9,061
Number of New Foster Homes	524	582	663	999	722	717	1,050	756
Number of Foster Homes Closed	676	681	679	747	740	715	787	822
Number and Percentage of Foster Homes Receiving Visitation In the Last Qtr. Of Reporting Period	3,182 (88.5%)	3,121 (89.3%)	3,132 (79.9%)	3,095 (82.6%)	3,316 (92.7)	3,491 (89.5%)	3,689 (85.2%)	3,949 (89.8%)
Number and Percentage of Foster Homes not Receiving Visitation	413 (11.5%)	375 (10.7%)	790 (20.1)	653 (17.4%)	260 (7.3%)	409 (10.5%)	640 (14.8%)	448 (10.2%)
Number of Children Leaving DES Custody	3,649	3,574	3,826	3,923	4,668	4,805	4,786	5,042
Number of Children With a Case Plan Goal of Adoption	2,426	2,561	2,663	2,719	2,852	3,311	3,417	3,377
Number of Children With a Finalized Adoption	1,186	1,078	1,224	1,025	1,270	1,215	1,518	1,552

¹ Since the appeals process delays the substantiation of reports, revisions to the substantiation rate for the prior reporting period will occur with every semi-annual report produced.

² The number of available foster homes includes homes reported by the Department's Home Recruitment, Study and Supervision contractors along with foster homes utilized for appropriate children in coordination with the Division of Developmental Disabilities.

Reports of Child Abuse & Neglect

Child abuse and neglect are defined in A.R.S. §8-201 and A.R.S. §13-3623 (A). These definitions provide the major categories in this report.

Between April 1, 2014 and September 30, 2014, there were 25,076 incoming communications to the Child Abuse Hotline that met the criteria for a report of abuse or neglect. Of these, 339 were within the jurisdiction of military or tribal governments and were referred to those jurisdictions. Compared to one year ago, there has been a 13.8% increase in reports received by the Child Abuse Hotline meeting the criteria of a report of abuse or neglect.

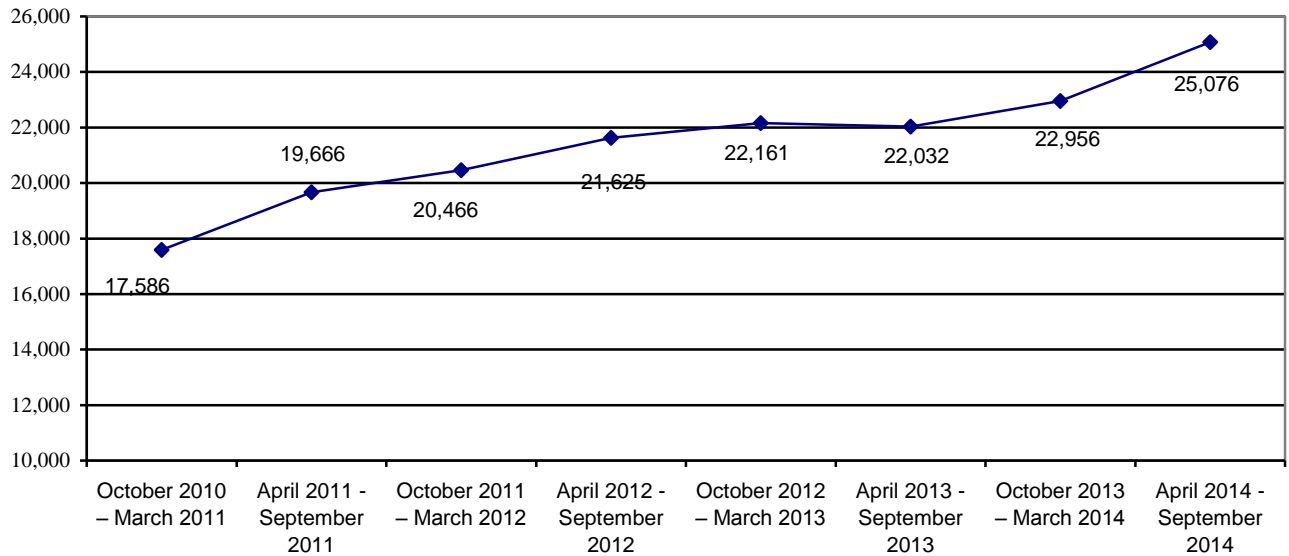
Table 1 shows the number of reports received by the Department by category of maltreatment for the current and past reporting periods. One consistent trend is the increase in the proportion of reports that meet the criteria of neglect. To address this trend, the Department is working internally and with community partners to configure services so that the availability of services with a preventative focus is increased.

**TABLE 1
REPORTS BY REPORTING PERIOD AND TYPE OF MALTREATMENT**

	Neglect	Physical Abuse	Sexual Abuse	Emotional Abuse	Total
October 2010 – March 2011	10,960 62.3%	5,755 32.7%	712 4.1%	159 0.9%	17,586 100.0%
April 2011 – September 2011	13,158 66.8%	5,615 28.6%	739 3.8%	154 0.8%	19,666 100.0%
October 2011 – March 2012	13,369 65.3%	6,198 30.3%	739 3.6%	160 0.8%	20,466 100.0%
April 2012 – September 2012	14,722 68.1%	5,974 27.6%	764 3.5%	165 0.8%	21,625 100.0%
October 2012 – March 2013	14,916 67.2%	6,263 28.3%	815 3.7%	167 0.8%	22,161 100.0%
April 2013 – September 2013	15,560 70.6%	5,607 25.5%	731 3.3%	134 0.6%	22,032 100.0%
October 2013 – March 2014	15,766 68.7%	6,248 27.2%	772 3.4%	170 0.7%	22,956 100.0%
April 2014 – September 2014	18,022 71.9%	6,074 24.2%	847 3.4%	133 0.5%	25,076 100.0%

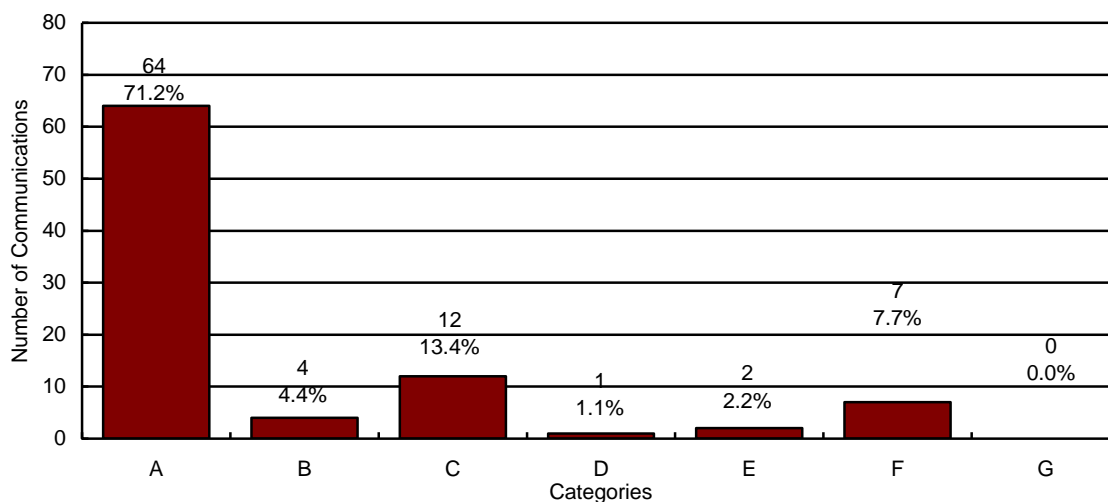
Chart 1 illustrates that the number of reports received by the Centralized Intake Hotline has increased by 3,044 reports over the same reporting period last year. The chart below also shows that the significant upward trend in reports received by the Centralized Intake Hotline has continued since FY 2011. This in turn resulted in more children entering out-of-home care (see Chart 18 for information on the out-of-home population).

**CHART 1
REPORTS OF CHILD ABUSE AND NEGLECT BY REPORTING PERIOD**



The Centralized Intake Hotline received a total of 75,461 calls during the reporting period. Of those, 65,194 were answered by a hotline specialist and 8,217 were abandoned calls. The 65,194 yielded 40,118 communications and 25,076 reports of abuse and neglect. Communications do not meet the statutory criteria of a report of maltreatment. A random sample was selected to represent the types of calls that do not get classified as reports of abuse and neglect. This random sample is contained in the chart below.

CHART 2
SAMPLE OF COMMUNICATIONS TO THE CENTRALIZED INTAKE HOTLINE THAT DO NOT MEET THE STATUTORY REQUIREMENTS OF A REPORT OF ABUSE OR NEGLECT



N=90

- A = Concern Only/No Allegation of Child Abuse or Neglect**
- B = Out of DCS Jurisdiction**
- C = Call Appropriate for Law Enforcement Jurisdiction³**
- D = Non-Caretaker Neglect/Child No Longer at Risk**
- E = Insufficient Information**
- F = Truancy/Custody Issues**
- G = Current Case Questions or Referrals**

All communications that do not meet the statutory requirements for a field investigation of abuse or neglect are reviewed within 48 hours by Department of Child Safety quality assurance staff.

³ The category “Call Appropriate for Law Enforcement Jurisdiction” refers to a situation where the alleged perpetrator is not a parent or primary caretaker and the allegations, if true, would constitute a crime.

Chart 3 below provides information on the number of reports that met each of the Centralized Intake Hotline priority classifications in the current and past reporting periods. In Table 2 and Table 3, data on total reports by priority is shown by county for the current and previous reporting periods. The priority determinations are made by personnel at the child abuse hotline after the review of multiple factors, however, below is a high level summary of each response time criteria.

PRIORITY 1: Present danger refers to an immediate, significant and clearly observable family condition present now which has resulted in or is likely to result in serious or severe harm requiring an immediate initial response.

PRIORITY 2: Impending danger may not be occurring in the present but is likely to occur in the immediate to near future and will likely result in serious or severe harm to a child.

PRIORITY 3: Reports that do not rise to the level of present or impending danger, but there is an incident of abuse or neglect that has happened in the past 30 days. This includes a current minor injury to the child.

PRIORITY 4: Reports that do not rise to the level of present or impending danger, but 1) there is an incident of abuse or neglect that happened more than 30 days ago, or 2) the date of last occurrence is unknown and there is no current physical indicator of maltreatment, or 3) there is unreasonable risk of harm to the child’s health or welfare.

**CHART 3
NUMBER OF REPORTS RECEIVED BY PRIORITY**



TABLE 2
NUMBER OF REPORTS RECEIVED BY PRIORITY AND COUNTY FOR PERIOD OF
APRIL 1, 2014 THROUGH SEPTEMBER 30, 2014

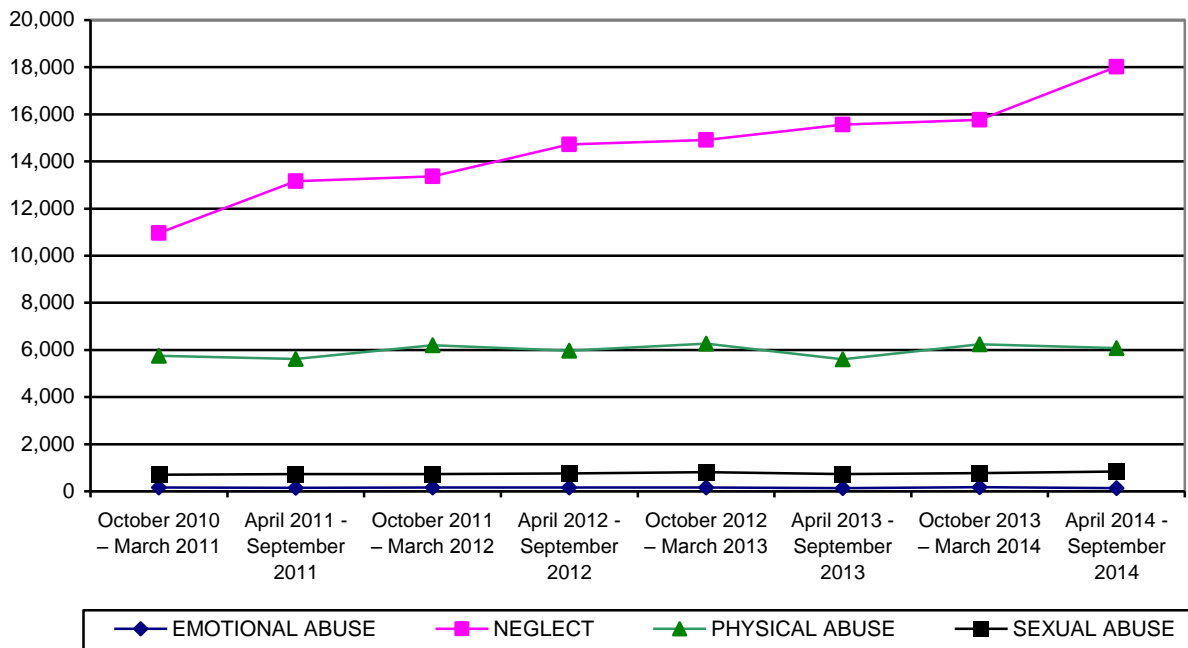
COUNTY	PRIORITY 1	PRIORITY 2	PRIORITY 3	PRIORITY 4	TOTAL	% OF TOTAL
APACHE	17	29	40	21	107	0.4%
COCHISE	86	105	178	57	426	1.7%
COCONINO	73	79	179	94	425	1.7%
GILA	70	73	80	34	257	1.0%
GRAHAM	29	45	70	33	177	0.7%
GREENLEE	3	12	16	3	34	0.1%
LA PAZ	9	17	29	15	70	0.3%
MARICOPA	2,791	2,961	5,861	3,067	14,680	58.5%
MOHAVE	189	160	314	132	795	3.2%
NAVAJO	88	92	165	65	410	1.6%
PIMA	746	955	1,970	904	4,575	18.2%
PINAL	324	361	694	363	1,742	7.0%
SANTA CRUZ	22	24	50	30	126	0.5%
YAVAPAI	102	130	327	155	714	2.9%
YUMA	109	120	201	108	538	2.2%
STATEWIDE	4,658	5,163	10,174	5,081	25,076	100.0%
% OF TOTAL	18.6%	20.6%	40.5%	20.3%	100.0%	

TABLE 3
NUMBER OF REPORTS RECEIVED BY PRIORITY AND COUNTY FOR PERIOD OF
OCTOBER 1, 2013 THROUGH MARCH 31, 2014

COUNTY	PRIORITY 1	PRIORITY 2	PRIORITY 3	PRIORITY 4	TOTAL	% OF TOTAL
APACHE	18	17	44	18	97	0.4%
COCHISE	75	74	196	86	431	1.9%
COCONINO	79	62	201	67	409	1.8%
GILA	56	46	111	33	246	1.1%
GRAHAM	24	26	55	24	129	0.6%
GREENLEE	3	8	9	7	27	0.1%
LA PAZ	15	11	34	13	73	0.3%
MARICOPA	2,711	2,587	6,048	2,974	14,320	62.3%
MOHAVE	120	128	274	119	641	2.8%
NAVAJO	80	69	165	64	378	1.7%
PIMA	658	756	1,884	814	4,112	17.8%
PINAL	184	169	318	157	828	3.6%
SANTA CRUZ	15	21	48	22	106	0.5%
YAVAPAI	95	110	303	128	636	2.8%
YUMA	99	87	247	90	523	2.3%
STATEWIDE	4,232	4,171	9,937	4,616	22,956	100.0%
% OF TOTAL	18.4%	18.2%	43.3%	20.1%	100.0%	

The following chart and tables provide the number of reports categorized by type of maltreatment. The total number of reports received by type of maltreatment is displayed in Chart 4. In Table 4 and Table 5 data on the total reports by type of maltreatment is shown by county for the current and previous reporting periods.

**CHART 4
NUMBER OF REPORTS RECEIVED BY TYPE OF MALTREATMENT**



**TABLE 4
NUMBER OF REPORTS RECEIVED BY TYPE OF MALTREATMENT AND COUNTY FOR PERIOD OF APRIL 1, 2014 THROUGH SEPTEMBER 30, 2014**

COUNTY	EMOTIONAL ABUSE	NEGLECT	PHYSICAL ABUSE	SEXUAL ABUSE	TOTAL	% OF TOTAL
APACHE	3	75	23	6	107	0.4%
COCHISE	3	312	99	12	426	1.7%
COCONINO	0	305	99	21	425	1.7%
GILA	2	202	46	7	257	1.0%
GRAHAM	1	127	42	7	177	0.7%
GREENLEE	0	25	8	1	34	0.1%
LA PAZ	0	48	20	2	70	0.3%
MARICOPA	77	10,394	3,695	514	14,680	58.5%
MOHAVE	4	591	173	27	795	3.2%
NAVAJO	2	311	83	14	410	1.6%
PIMA	16	3,372	1,056	131	4,575	18.2%
PINAL	18	1,262	414	48	1,742	7.0%
SANTA CRUZ	1	91	30	4	126	0.5%
YAVAPAI	4	517	167	26	714	2.9%
YUMA	2	390	119	27	538	2.2%
STATEWIDE	133	18,022	6,074	847	25,076	100.0%
% OF TOTAL	0.5%	71.9%	24.2%	3.4%	100.0%	

TABLE 5
NUMBER OF REPORTS RECEIVED BY TYPE OF MALTREATMENT AND COUNTY FOR
PERIOD OF OCTOBER 1, 2013 THROUGH MARCH 31, 2014

COUNTY	EMOTIONAL ABUSE	NEGLECT	PHYSICAL ABUSE	SEXUAL ABUSE	TOTAL	% OF TOTAL
APACHE	1	62	28	6	97	0.4%
COCHISE	2	301	113	15	431	1.9%
COCONINO	3	286	105	15	409	1.8%
GILA	1	176	64	5	246	1.1%
GRAHAM	0	96	30	3	129	0.6%
GREENLEE	0	20	6	1	27	0.1%
LA PAZ	1	56	14	2	73	0.3%
MARICOPA	107	9,625	4,090	498	14,320	62.3%
MOHAVE	2	479	139	21	641	2.8%
NAVAJO	3	269	89	17	378	1.7%
PIMA	31	2,915	1,055	111	4,112	17.8%
PINAL	6	584	207	31	828	3.6%
SANTA CRUZ	1	71	30	4	106	0.5%
YAVAPAI	4	448	160	24	636	2.8%
YUMA	8	378	118	19	523	2.3%
STATEWIDE	170	15,766	6,248	772	22,956	100.0%
% OF TOTAL	0.7%	68.7%	27.2%	3.4%	100.0%	

ASSIGNMENT OF INVESTIGATIONS

During the current reporting period, there were 25,076 calls to the Hotline that met the statutory criteria for a report. Of those, 339 reports fell within the jurisdiction of military or tribal governments and an additional 302 reports did not have response data entered at the time this report was compiled. The assignment of the remaining 24,737 reports for investigation was as follows:

The following tables and charts in this section provide statewide and county level information on these reports assigned to DCS. Of these, DCS completed 12,038 (48.7%) of their assigned investigations. Those not completed remain open when the investigation is still in process, when the specialist is waiting for the results of a law enforcement investigation and/or receipt of records that impact the investigation finding, or when the investigation has been completed but is awaiting supervisory review and approval.

**CHART 5
NUMBER OF REPORTS ASSIGNED FOR INVESTIGATION BY PRIORITY AND REPORTING PERIOD**

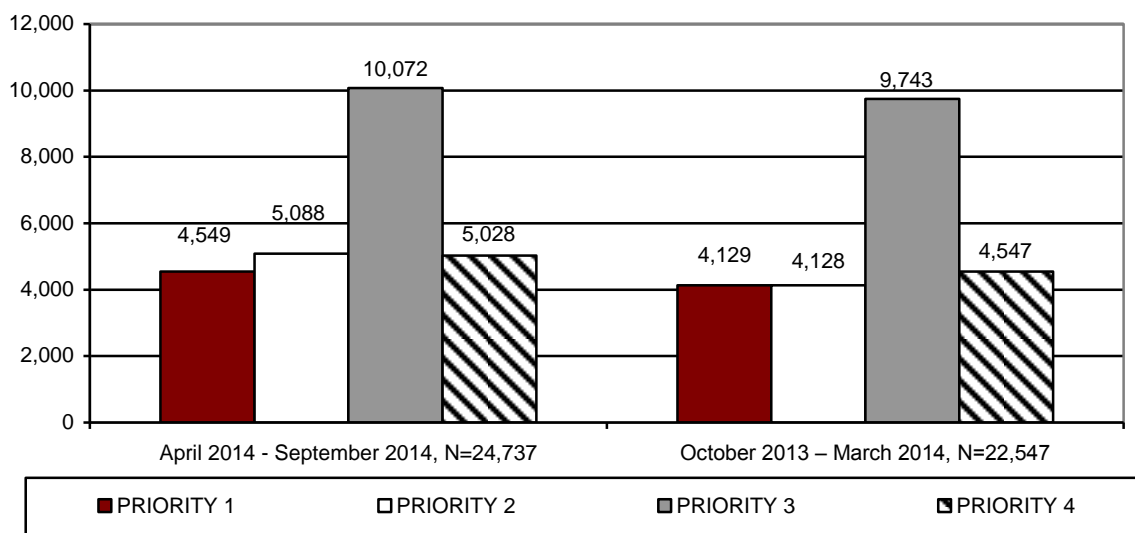


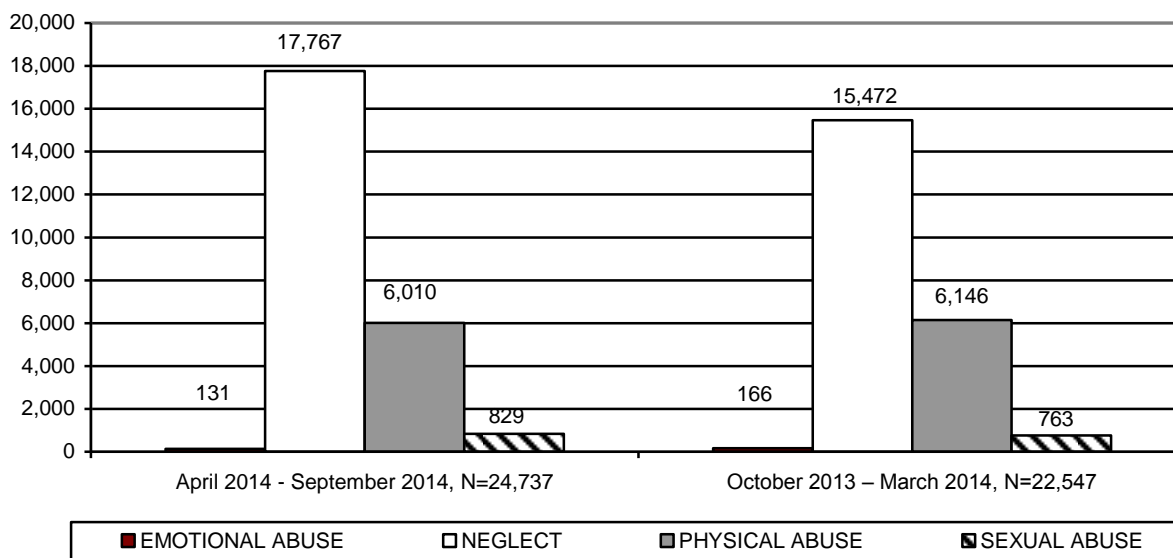
TABLE 6
NUMBER OF REPORTS ASSIGNED FOR INVESTIGATION BY PRIORITY AND COUNTY
FOR PERIOD OF APRIL 1, 2014 THROUGH SEPTEMBER 30, 2014

COUNTY	PRIORITY 1	PRIORITY 2	PRIORITY 3	PRIORITY 4	TOTAL	% OF TOTAL
APACHE	12	21	27	14	74	0.3%
COCHISE	86	105	178	57	426	1.7%
COCONINO	55	71	160	82	368	1.5%
GILA	56	66	70	30	222	0.9%
GRAHAM	26	39	65	31	161	0.7%
GREENLEE	3	12	16	3	34	0.1%
LA PAZ	7	16	27	12	62	0.3%
MARICOPA	2,776	2,952	5,852	3,060	14,640	59.1%
MOHAVE	183	155	312	131	781	3.2%
NAVAJO	59	76	149	60	344	1.4%
PIMA	740	951	1,963	901	4,555	18.3%
PINAL	317	352	680	357	1,706	6.9%
SANTA CRUZ	22	24	50	30	126	0.5%
YAVAPAI	100	129	322	153	704	2.9%
YUMA	107	119	201	107	534	2.2%
STATEWIDE	4,549	5,088	10,072	5,028	24,737	100.0%
% OF TOTAL	18.4%	20.6%	40.7%	20.3%	100.0%	

TABLE 7
NUMBER OF REPORTS ASSIGNED FOR INVESTIGATION BY PRIORITY AND COUNTY
FOR PERIOD OF OCTOBER 1, 2013 THROUGH MARCH 31, 2014

COUNTY	PRIORITY 1	PRIORITY 2	PRIORITY 3	PRIORITY 4	TOTAL	% OF TOTAL
APACHE	14	13	39	13	79	0.4%
COCHISE	75	74	196	86	431	1.9%
COCONINO	61	53	175	59	348	1.5%
GILA	44	43	103	33	223	1.0%
GRAHAM	21	23	54	22	120	0.5%
GREENLEE	3	8	9	7	27	0.1%
LA PAZ	12	11	31	12	66	0.3%
MARICOPA	2,694	2,580	6,037	2,966	14,277	63.4%
MOHAVE	117	128	273	119	637	2.8%
NAVAJO	59	59	144	60	322	1.4%
PIMA	653	754	1,782	775	3,964	17.6%
PINAL	170	165	306	156	797	3.5%
SANTA CRUZ	15	21	48	22	106	0.5%
YAVAPAI	94	109	300	128	631	2.8%
YUMA	97	87	246	89	519	2.3%
STATEWIDE	4,129	4,128	9,743	4,547	22,547	100.0%
% OF TOTAL	18.3%	18.3%	43.2%	20.2%	100.0%	

**CHART 6
NUMBER OF REPORTS ASSIGNED FOR INVESTIGATION BY TYPE OF MALTREATMENT
AND REPORTING PERIOD**



**TABLE 8
NUMBER OF REPORTS ASSIGNED FOR INVESTIGATION BY TYPE OF MALTREATMENT
BY COUNTY FOR PERIOD OF APRIL 1, 2014 THROUGH SEPTEMBER 30, 2014**

COUNTY	EMOTIONAL ABUSE	NEGLECT	PHYSICAL ABUSE	SEXUAL ABUSE	TOTAL	% OF TOTAL
APACHE	1	56	15	2	74	0.3%
COCHISE	3	312	99	12	426	1.7%
COCONINO	0	266	87	15	368	1.5%
GILA	2	174	40	6	222	0.9%
GRAHAM	1	115	39	6	161	0.7%
GREENLEE	0	25	8	1	34	0.1%
LA PAZ	0	42	18	2	62	0.3%
MARICOPA	77	10,360	3,689	514	14,640	59.1%
MOHAVE	4	582	169	26	781	3.2%
NAVAJO	2	254	76	12	344	1.4%
PIMA	16	3,357	1,051	131	4,555	18.3%
PINAL	18	1,236	406	46	1,706	6.9%
SANTA CRUZ	1	91	30	4	126	0.5%
YAVAPAI	4	510	165	25	704	2.9%
YUMA	2	387	118	27	534	2.2%
STATEWIDE	131	17,767	6,010	829	24,737	100.0%
% OF TOTAL	0.5%	71.8%	24.3%	3.4%	100.0%	

TABLE 9
NUMBER OF REPORTS ASSIGNED FOR INVESTIGATION BY TYPE OF MALTREATMENT
BY COUNTY FOR PERIOD OF OCTOBER 1, 2013 THROUGH MARCH 31, 2014

COUNTY	EMOTIONAL ABUSE	NEGLECT	PHYSICAL ABUSE	SEXUAL ABUSE	TOTAL	% OF TOTAL
APACHE	1	51	22	5	79	0.4%
COCHISE	2	301	113	15	431	1.9%
COCONINO	1	237	96	14	348	1.5%
GILA	1	158	60	4	223	1.0%
GRAHAM	0	90	27	3	120	0.5%
GREENLEE	0	20	6	1	27	0.1%
LA PAZ	1	51	13	1	66	0.3%
MARICOPA	107	9,591	4,083	496	14,277	63.4%
MOHAVE	2	476	138	21	637	2.8%
NAVAJO	3	225	79	15	322	1.4%
PIMA	29	2,823	1,002	110	3,964	17.6%
PINAL	6	559	201	31	797	3.5%
SANTA CRUZ	1	71	30	4	106	0.5%
YAVAPAI	4	444	159	24	631	2.8%
YUMA	8	375	117	19	519	2.3%
STATEWIDE	166	15,472	6,146	763	22,547	100.0%
% OF TOTAL	0.7%	68.6%	27.3%	3.4%	100.0%	

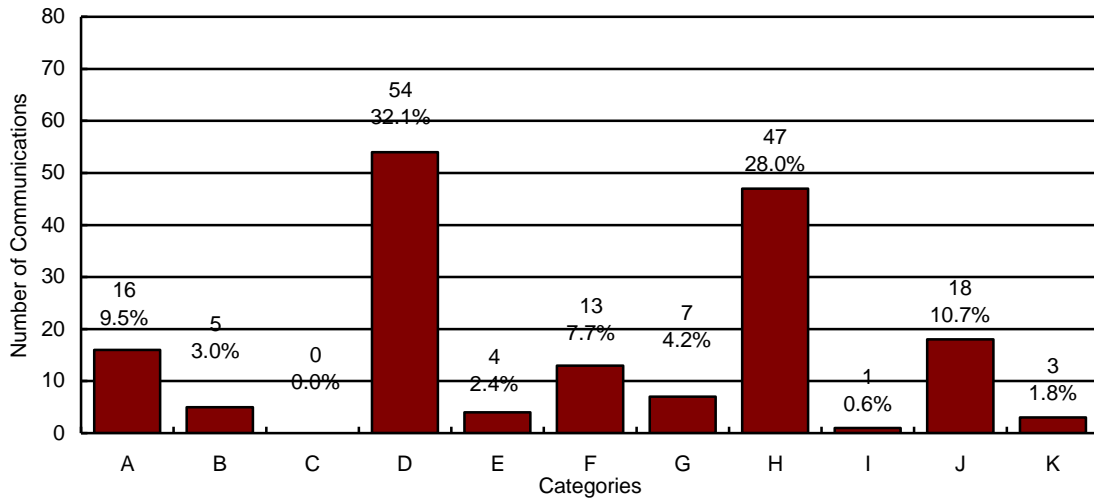
INVESTIGATIONS OF CHILD ABUSE AND NEGLECT

**TABLE 10
NUMBER OF REPORTS WITHOUT RESPONSE DATA BY PRIORITY AND COUNTY FOR
PERIOD OF APRIL 1, 2014 THROUGH SEPTEMBER 30, 2014**

COUNTY	PRIORITY 1	PRIORITY 2	PRIORITY 3	PRIORITY 4	TOTAL	% OF TOTAL
APACHE	0	0	0	0	0	0.0%
COCHISE	0	0	0	0	0	0.0%
COCONINO	0	0	0	0	0	0.0%
GILA	0	0	0	0	0	0.0%
GRAHAM	0	0	0	0	0	0.0%
GREENLEE	0	0	0	0	0	0.0%
LA PAZ	0	0	0	0	0	0.0%
MARICOPA	0	0	19	13	32	10.6%
MOHAVE	0	0	22	12	34	11.3%
NAVAJO	0	0	1	1	2	0.7%
PIMA	0	0	148	73	221	73.1%
PINAL	0	0	0	0	0	0.0%
SANTA CRUZ	0	0	0	0	0	0.0%
YAVAPAI	0	0	7	6	13	4.3%
YUMA	0	0	0	0	0	0.0%
STATEWIDE	0	0	197	105	302	100.0%
% OF TOTAL	0.0%	0.0%	65.2%	34.8%	100.0%	

By statute, a random sample of reports that do not have data on an investigative response in each reporting period is required. In addition, short descriptions of these reports are also required. From the 302 reports that did not have response data at the time this report was compiled, 168 reports were reviewed. Chart 7 displays the 168 reports in brief descriptive categories.

CHART 7
NUMBER OF REPORTS WITHOUT RESPONSE DATA BY CATEGORY FOR THE PERIOD
OF APRIL 1, 2014 THROUGH SEPTEMBER 30, 2014



N=168

- A = Adolescent, Past Abuse, No Current Injuries**
- B = Inadequate Housekeeping Standards**
- C = Inappropriate Vehicle Operation**
- D = No Specific Allegations**
- E = Past Abuse no current injuries**
- F = Adolescent, current minor injuries**
- G = Non-adolescent, current minor injuries**
- H = Poor parenting skills**
- I = Left with inappropriate caregiver**
- J = Law Enforcement Issue**
- K = Out of Control Teenager**

CHART 8
NUMBER OF REPORTS ASSIGNED FOR INVESTIGATION BY PRIORITY AND REPORTING PERIOD FOR REPORTS OPEN FOR INVESTIGATION

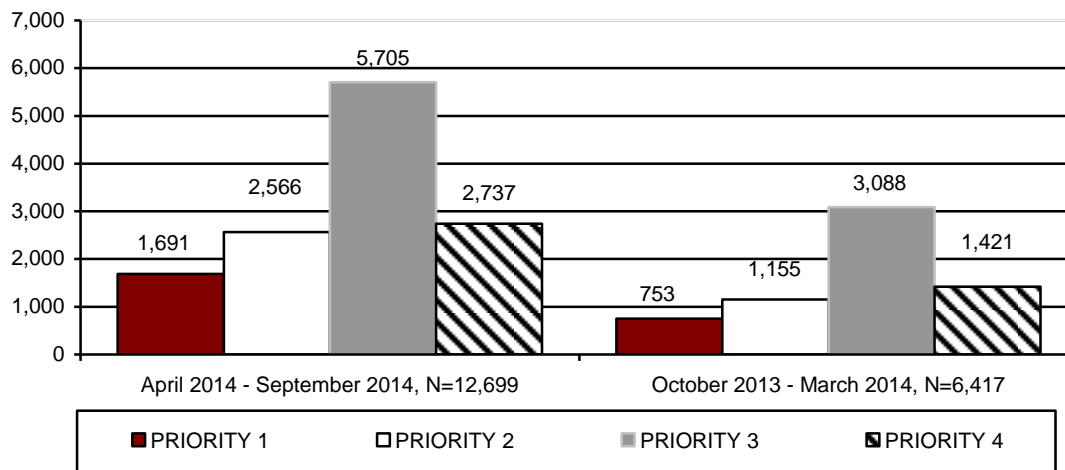


TABLE 11
NUMBER OF REPORTS BY PRIORITY AND COUNTY FOR REPORTS OPEN FOR INVESTIGATION FOR PERIOD OF APRIL 1, 2014 THROUGH SEPTEMBER 30, 2014

COUNTY	PRIORITY 1	PRIORITY 2	PRIORITY 3	PRIORITY 4	TOTAL	% OF TOTAL
APACHE	0	3	1	0	4	<0.1%
COCHISE	43	60	122	31	256	2.0%
COCONINO	13	12	23	15	63	0.5%
GILA	40	46	51	18	155	1.2%
GRAHAM	6	11	22	21	60	0.5%
GREENLEE	1	3	9	0	13	0.1%
LA PAZ	0	1	5	4	10	0.1%
MARICOPA	1,105	1,625	3,511	1,721	7,962	62.8%
MOHAVE	68	74	170	64	376	3.0%
NAVAJO	2	6	29	11	48	0.4%
PIMA	202	427	1,064	496	2,189	17.2%
PINAL	131	183	418	213	945	7.4%
SANTA CRUZ	13	20	45	27	105	0.8%
YAVAPAI	49	60	170	81	360	2.8%
YUMA	18	35	65	35	153	1.2%
STATEWIDE	1,691	2,566	5,705	2,737	12,699	100.0%
% OF TOTAL	13.1%	20.2%	44.9%	21.6%	100.0%	

TABLE 12
NUMBER OF REPORTS BY PRIORITY AND COUNTY FOR REPORTS OPEN FOR INVESTIGATION FOR PERIOD OF OCTOBER 1, 2013 THROUGH MARCH 31, 2014

COUNTY	PRIORITY 1	PRIORITY 2	PRIORITY 3	PRIORITY 4	TOTAL	% OF TOTAL
APACHE	0	0	0	0	0	0.0%
COCHISE	33	35	111	54	233	3.6%
COCONINO	0	0	1	0	1	<0.1%
GILA	17	26	55	21	119	1.9%
GRAHAM	2	1	8	1	12	0.2%
GREENLEE	0	1	1	1	3	0.1%
LA PAZ	0	0	2	0	2	<0.1%
MARICOPA	539	751	1,949	931	4,170	65.0%
MOHAVE	6	11	20	8	45	0.7%
NAVAJO	1	0	1	0	2	<0.1%
PIMA	90	188	649	249	1,176	18.3%
PINAL	51	102	202	116	471	7.3%
SANTA CRUZ	7	15	37	16	75	1.2%
YAVAPAI	5	17	43	18	83	1.3%
YUMA	2	8	9	6	25	0.4%
STATEWIDE	753	1,155	3,088	1,421	6,417	100.0%
% OF TOTAL	11.7%	18.0%	48.2%	22.1%	100.0%	

CHART 9
NUMBER OF REPORTS ASSIGNED FOR INVESTIGATION BY TYPE OF MALTREATMENT FOR REPORTS OPEN FOR INVESTIGATION

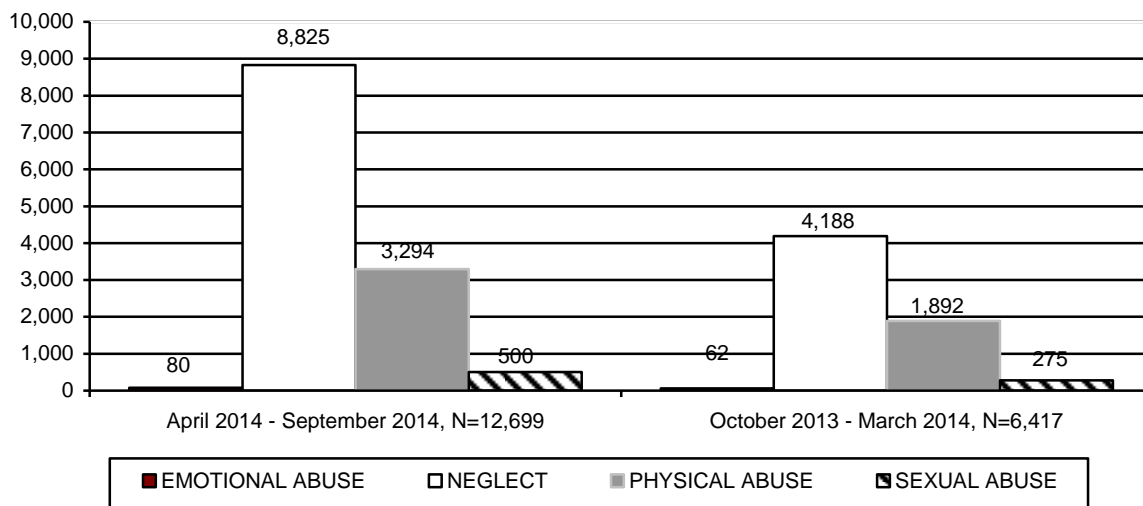


TABLE 13
NUMBER OF REPORTS BY TYPE OF MALTREATMENT AND COUNTY FOR REPORTS
OPEN FOR INVESTIGATION FOR PERIOD OF
APRIL 1, 2014 THROUGH SEPTEMBER 30, 2014

COUNTY	EMOTIONAL ABUSE	NEGLECT	PHYSICAL ABUSE	SEXUAL ABUSE	TOTAL	% OF TOTAL
APACHE	0	3	1	0	4	<0.1%
COCHISE	2	178	68	8	256	2.0%
COCONINO	0	46	15	2	63	0.5%
GILA	2	117	31	5	155	1.2%
GRAHAM	0	42	16	2	60	0.5%
GREENLEE	0	7	5	1	13	0.1%
LA PAZ	0	5	5	0	10	0.1%
MARICOPA	47	5,410	2,172	333	7,962	62.8%
MOHAVE	0	272	82	22	376	3.0%
NAVAJO	0	37	11	0	48	0.4%
PIMA	10	1,596	511	72	2,189	17.2%
PINAL	15	680	224	26	945	7.4%
SANTA CRUZ	1	73	27	4	105	0.8%
YAVAPAI	3	251	91	15	360	2.8%
YUMA	0	108	35	10	153	1.2%
STATEWIDE	80	8,825	3,294	500	12,699	100.0%
% OF TOTAL	0.6%	69.6%	25.9%	3.9%	100.0%	

TABLE 14
NUMBER OF REPORTS BY TYPE OF MALTREATMENT AND COUNTY FOR REPORTS
OPEN FOR INVESTIGATION FOR PERIOD OF
OCTOBER 1, 2013 THROUGH MARCH 31, 2014

COUNTY	EMOTIONAL ABUSE	NEGLECT	PHYSICAL ABUSE	SEXUAL ABUSE	TOTAL	% OF TOTAL
APACHE	0	0	0	0	0	0.0%
COCHISE	1	155	67	10	233	3.6%
COCONINO	0	1	0	0	1	<0.1%
GILA	0	83	33	3	119	1.9%
GRAHAM	0	7	5	0	12	0.2%
GREENLEE	0	2	1	0	3	0.1%
LA PAZ	0	2	0	0	2	<0.1%
MARICOPA	36	2,661	1,259	214	4,170	65.0%
MOHAVE	0	32	12	1	45	0.7%
NAVAJO	0	2	0	0	2	<0.1%
PIMA	14	818	327	17	1,176	18.3%
PINAL	7	309	135	20	471	7.3%
SANTA CRUZ	1	50	22	2	75	1.2%
YAVAPAI	2	47	27	7	83	1.3%
YUMA	1	19	4	1	25	0.4%
STATEWIDE	62	4,188	1,892	275	6,417	100.0%
% OF TOTAL	1.0%	65.2%	29.5%	4.3%	100.0%	

CHART 10
NUMBER OF REPORTS ASSIGNED FOR INVESTIGATION WHERE A REMOVAL OCCURRED

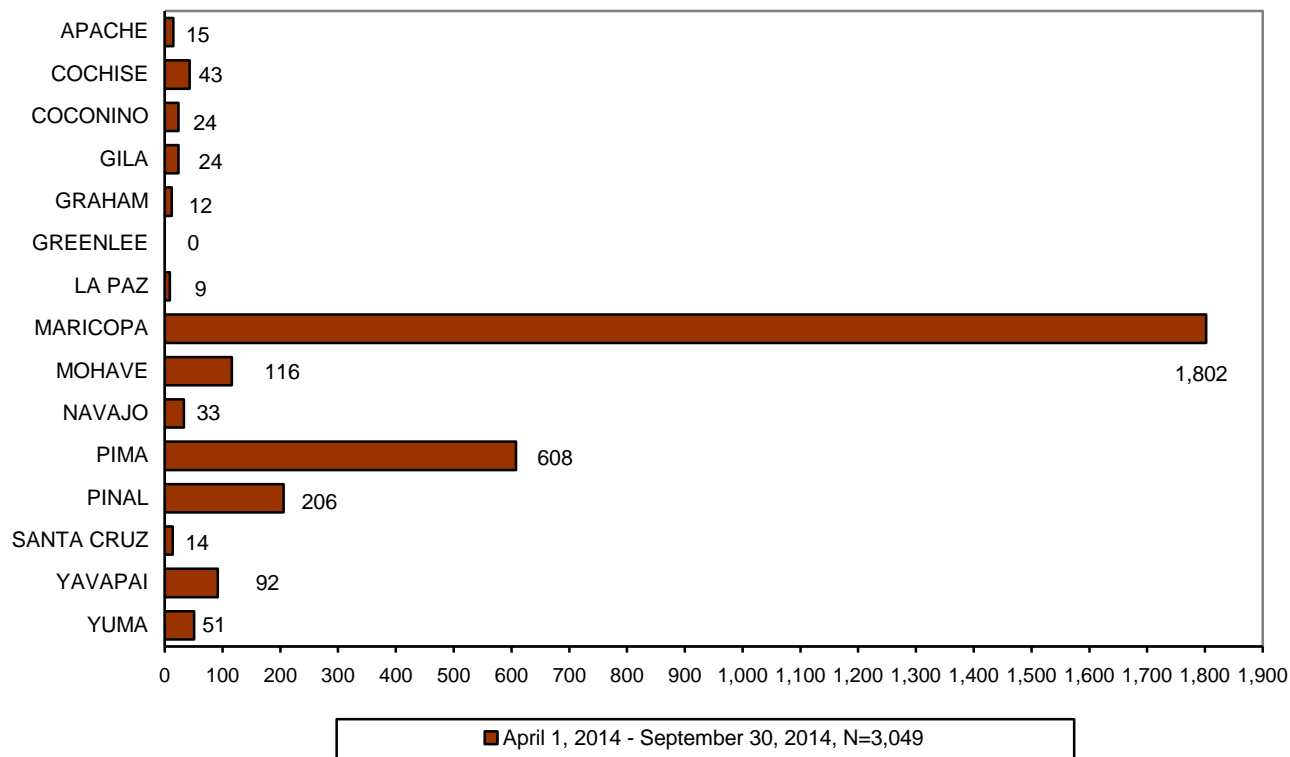


TABLE 15
NUMBER OF REPORTS ASSIGNED FOR INVESTIGATION BY COUNTY WHERE A REMOVAL OCCURRED FOR THE PERIOD APRIL 1, 2014 THROUGH SEPTEMBER 30, 2014

COUNTY	NUMBER OF REPORTS ASSIGNED	NUMBER OF REPORTS ASSIGNED WITH A REMOVAL	% OF REPORTS WHERE A CHILD REMOVED
APACHE	74	15	20.3%
COCHISE	426	43	10.1%
COCONINO	368	24	6.5%
GILA	222	24	10.8%
GRAHAM	161	12	7.5%
GREENLEE	34	0	0.0%
LA PAZ	62	9	14.5%
MARICOPA	14,640	1,802	12.3%
MOHAVE	781	116	14.9%
NAVAJO	344	33	9.6%
PIMA	4,555	608	13.3%
PINAL	1,706	206	12.1%
SANTA CRUZ	126	14	11.1%
YAVAPAI	704	92	13.1%
YUMA	534	51	9.6%
STATEWIDE	24,737	3,049	12.3%

TABLE 16
NUMBER OF REPORTS ASSIGNED FOR INVESTIGATION BY COUNTY WHERE A
REMOVAL OCCURRED FOR THE PERIOD OCTOBER 1, 2013 THROUGH MARCH 31, 2014

COUNTY	NUMBER OF REPORTS ASSIGNED	NUMBER OF REPORTS ASSIGNED WITH A REMOVAL	% OF REPORTS WHERE A CHILD WAS REMOVED
APACHE	79	12	15.2%
COCHISE	431	41	9.5%
COCONINO	348	24	6.9%
GILA	223	20	9.0%
GRAHAM	120	11	9.2%
GREENLEE	27	0	0.0%
LA PAZ	66	6	9.1%
MARICOPA	14,277	1,706	11.9%
MOHAVE	637	93	14.6%
NAVAJO	322	37	11.5%
PIMA	3,964	575	14.5%
PINAL	797	90	11.3%
SANTA CRUZ	106	12	11.3%
YAVAPAI	631	52	8.2%
YUMA	519	49	9.4%
STATEWIDE	22,547	2,728	12.1%

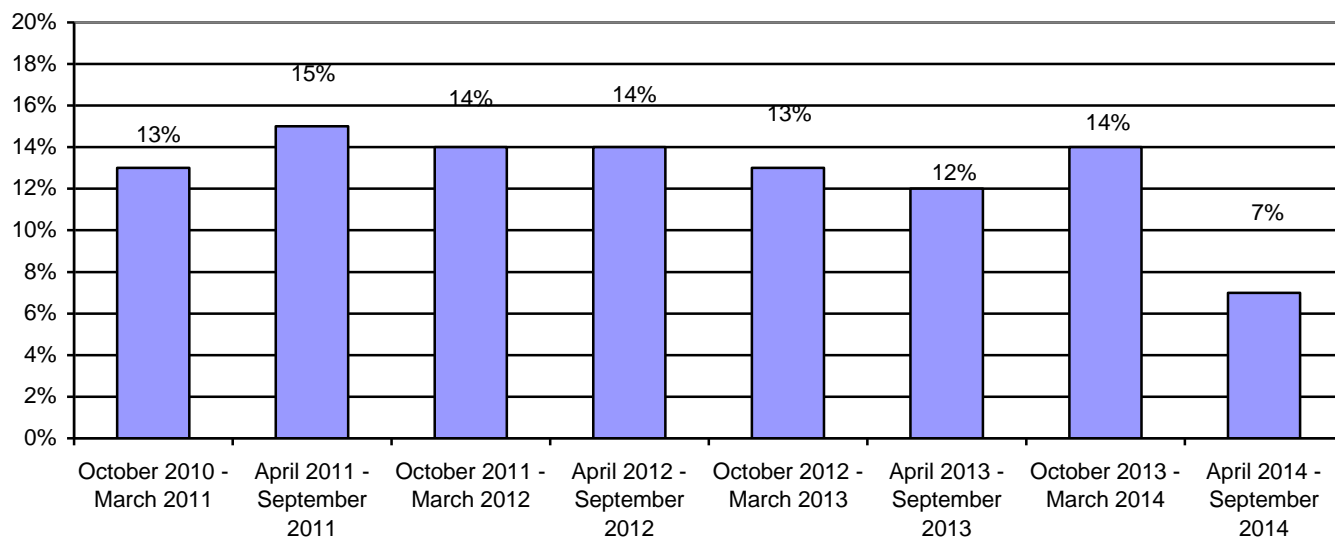
COMPLETED INVESTIGATIONS

Substantiated reports are reports where the Department has determined that at least one of the allegations in the report of abuse and/or neglect is true. The number of reports that are considered substantiated are a subset of the total number of reports that were received, investigated, and closed during the reporting period.

The preliminary number of reports that are substantiated for the current reporting period is 1,739. For the prior reporting period, the number of reports that were assigned for investigation that resulted in substantiated findings was revised from 1,576 to 3,190 to reflect subsequent decisions based on parents' rights to due process.

- The preliminary substantiation rate for the current reporting period is 7%. However, the substantiation rate for the current period is anticipated to be revised upwards in the next semi-annual report.
- The substantiation rate for the prior reporting period is 14%. However, when initially reported, the October 2013 – March 2014 substantiation rate was 7%.

**CHART 11
SUBSTANTIATION RATE BY REPORTING
PERIOD**



Information on both proposed substantiations and finalized substantiations is provided in the charts and tables below:

- For information on the proposed substantiated investigation findings—classified by priority—for the current and prior reporting period, see Chart 12, Table 17, and Table 18.
- For information on the proposed substantiated investigation findings—classified by type of maltreatment—for the current and prior reporting period, see Chart 13, Table 19, and Table 20.
- For information on the substantiated investigation findings—classified by priority—for the current and prior reporting period, see Chart 14, Table 21, and Table 22.
- For information on the substantiated investigation findings—classified by type of maltreatment—for the current and prior reporting period, see Chart 15, Table 23, and Table 24.

CHART 12
NUMBER OF REPORTS ASSIGNED FOR INVESTIGATION BY PRIORITY AND REPORTING PERIOD THAT RESULTED IN PROPOSED SUBSTANTIATION

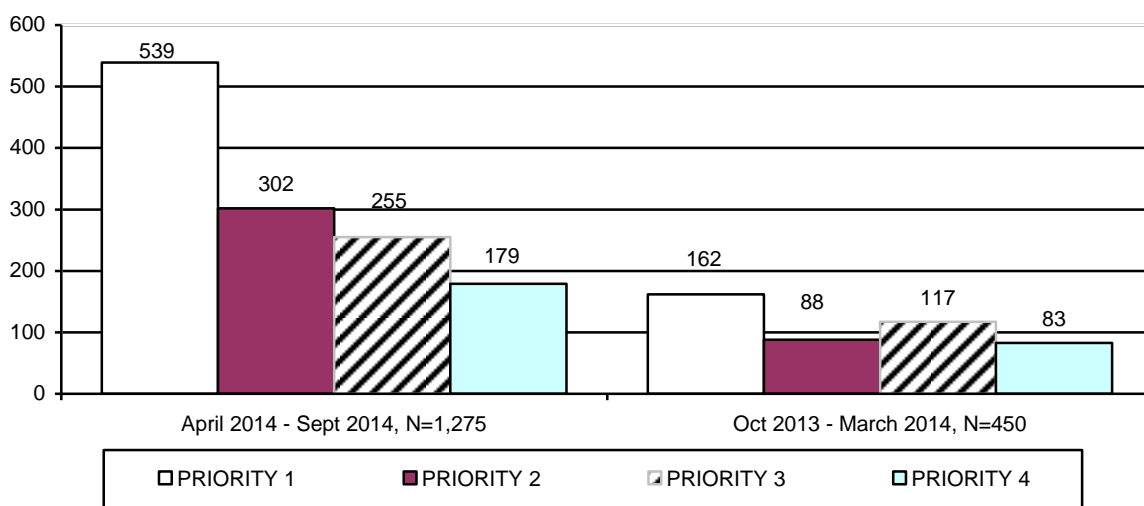


TABLE 17
NUMBER OF REPORTS ASSIGNED FOR INVESTIGATION BY PRIORITY AND COUNTY THAT RESULTED IN PROPOSED SUBSTANTIATION FOR PERIOD OF APRIL 1, 2014 THROUGH SEPTEMBER 30, 2014

COUNTY	PRIORITY 1	PRIORITY 2	PRIORITY 3	PRIORITY 4	TOTAL	% OF TOTAL
APACHE	2	2	5	0	9	0.7%
COCHISE	9	9	3	0	21	1.7%
COCONINO	4	5	0	1	10	0.8%
GILA	5	2	0	0	7	0.6%
GRAHAM	2	0	0	0	2	0.2%
GREENLEE	0	0	0	0	0	0.0%
LA PAZ	1	2	1	0	4	0.3%
MARICOPA	354	195	161	145	855	67.0%
MOHAVE	23	6	9	3	41	3.2%
NAVAJO	6	4	5	1	16	1.3%
PIMA	103	56	51	17	227	17.7%
PINAL	14	12	8	6	40	3.1%
SANTA CRUZ	1	1	0	0	2	0.2%
YAVAPAI	9	6	9	4	28	2.2%
YUMA	6	2	3	2	13	1.0%
STATEWIDE	539	302	255	179	1,275	100.0%
% OF TOTAL	42.3%	23.7%	20.0%	14.0%	100.0%	

TABLE 18
NUMBER OF REPORTS ASSIGNED FOR INVESTIGATION BY PRIORITY AND COUNTY
THAT RESULTED IN PROPOSED SUBSTANTIATION FOR PERIOD OF
OCTOBER 1, 2013 THROUGH MARCH 31, 2014

COUNTY	PRIORITY 1	PRIORITY 2	PRIORITY 3	PRIORITY 4	TOTAL	% OF TOTAL
APACHE	1	0	0	0	1	0.2%
COCHISE	5	0	2	0	7	1.6%
COCONINO	0	0	0	0	0	0.0%
GILA	2	2	2	2	8	1.8%
GRAHAM	0	0	0	0	0	0.0%
GREENLEE	0	0	0	0	0	0.0%
LA PAZ	0	0	0	0	0	0.0%
MARICOPA	129	59	86	67	341	75.7%
MOHAVE	6	8	4	3	21	4.6%
NAVAJO	1	0	1	0	2	0.4%
PIMA	11	13	15	6	45	10.0%
PINAL	6	4	4	2	16	3.6%
SANTA CRUZ	0	0	2	1	3	0.7%
YAVAPAI	0	2	0	1	3	0.7%
YUMA	1	0	1	1	3	0.7%
STATEWIDE	162	88	117	83	450	100.0%
% OF TOTAL	36.0%	19.6%	26.0%	18.4%	18.4%	

CHART 13
NUMBER OF REPORTS ASSIGNED FOR INVESTIGATION BY TYPE OF MALTREATMENT
THAT RESULTED IN PROPOSED SUBSTANTIATION

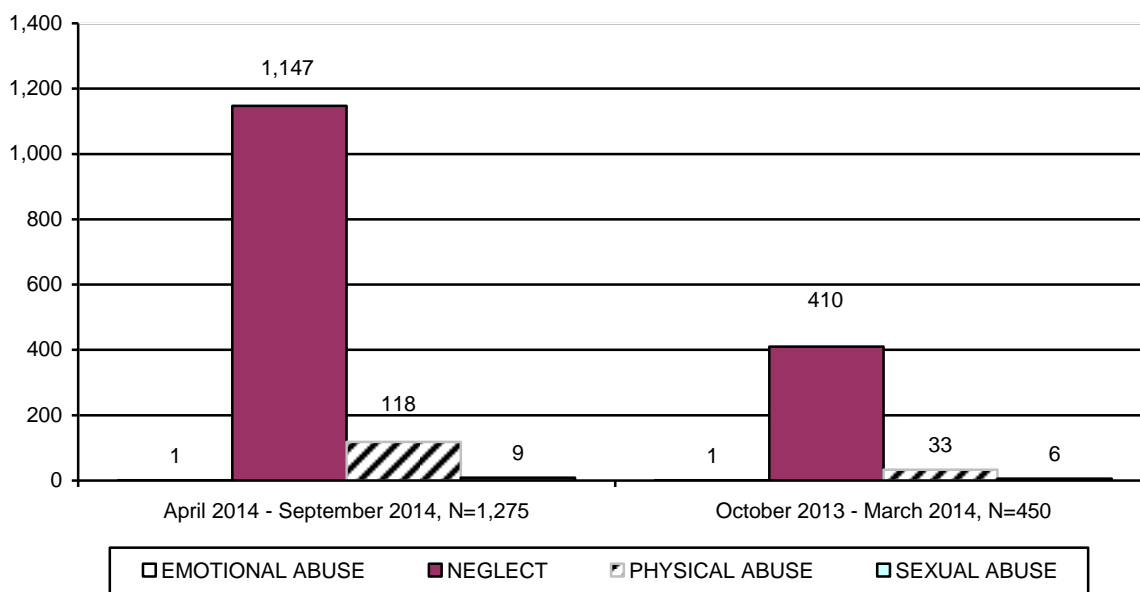


TABLE 19
NUMBER OF REPORTS ASSIGNED FOR INVESTIGATION BY TYPE OF MALTREATMENT
BY COUNTY THAT RESULTED IN PROPOSED SUBSTANTIATION FOR PERIOD OF
APRIL 1, 2014 THROUGH SEPTEMBER 30, 2014

COUNTY	EMOTIONAL ABUSE	NEGLECT	PHYSICAL ABUSE	SEXUAL ABUSE	TOTAL	% OF TOTAL
APACHE	0	6	3	0	9	0.7%
COCHISE	0	18	3	0	21	1.7%
COCONINO	0	9	1	0	10	0.8%
GILA	0	5	2	0	7	0.6%
GRAHAM	0	2	0	0	2	0.2%
GREENLEE	0	0	0	0	0	0.0%
LA PAZ	0	4	0	0	4	0.3%
MARICOPA	0	766	80	9	855	67.0%
MOHAVE	0	35	6	0	41	3.2%
NAVAJO	0	13	3	0	16	1.3%
PIMA	0	213	14	0	227	17.7%
PINAL	1	36	3	0	40	3.1%
SANTA CRUZ	0	2	0	0	2	0.2%
YAVAPAI	0	27	1	0	28	2.2%
YUMA	0	11	2	0	13	1.0%
STATEWIDE	1	1,147	118	9	1,275	100.0%
% OF TOTAL	0.1%	89.9%	9.3%	0.7%	100.0%	

TABLE 20
NUMBER OF REPORTS ASSIGNED FOR INVESTIGATION BY TYPE OF MALTREATMENT
BY COUNTY THAT RESULTED IN PROPOSED SUBSTANTIATION FOR PERIOD OF
OCTOBER 1, 2013 THROUGH MARCH 31, 2014

COUNTY	EMOTIONAL ABUSE	NEGLECT	PHYSICAL ABUSE	SEXUAL ABUSE	TOTAL	% OF TOTAL
APACHE	0	1	0	0	1	0.2%
COCHISE	0	5	2	0	7	1.6%
COCONINO	0	0	0	0	0	0.0%
GILA	0	8	0	0	8	1.8%
GRAHAM	0	0	0	0	0	0.0%
GREENLEE	0	0	0	0	0	0.0%
LA PAZ	0	0	0	0	0	0.0%
MARICOPA	0	312	24	5	341	75.7%
MOHAVE	1	19	0	1	21	4.6%
NAVAJO	0	2	0	0	2	0.4%
PIMA	0	42	3	0	45	10.0%
PINAL	0	16	0	0	16	3.6%
SANTA CRUZ	0	0	3	0	3	0.7%
YAVAPAI	0	3	0	0	3	0.7%
YUMA	0	2	1	0	3	0.7%
STATEWIDE	1	410	33	6	450	100.0%
% OF TOTAL	0.2%	91.2%	7.3%	1.3%	100.0%	

CHART 14
NUMBER OF REPORTS ASSIGNED FOR INVESTIGATION BY PRIORITY AND
REPORTING PERIOD THAT RESULTED IN
SUBSTANTIATION

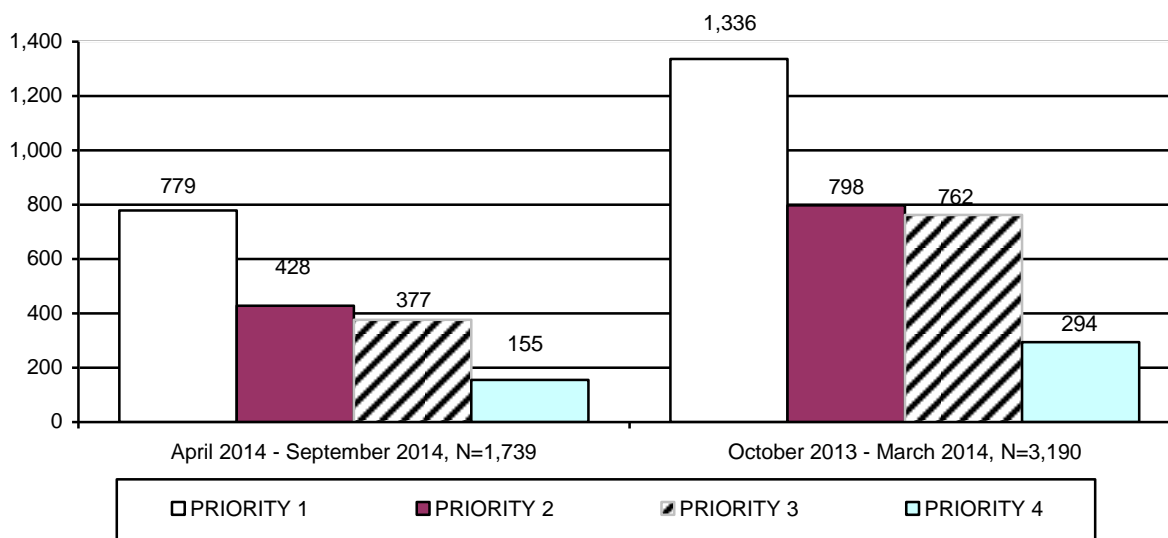


TABLE 21
NUMBER OF REPORTS ASSIGNED FOR INVESTIGATION BY PRIORITY AND COUNTY
THAT RESULTED IN SUBSTANTIATION FOR PERIOD OF
APRIL 1, 2014 THROUGH SEPTEMBER 30, 2014

COUNTY	PRIORITY 1	PRIORITY 2	PRIORITY 3	PRIORITY 4	TOTAL	% OF TOTAL
APACHE	3	3	1	0	7	0.4%
COCHISE	15	8	3	0	26	1.5%
COCONINO	13	8	12	1	34	2.0%
GILA	7	3	0	0	10	0.6%
GRAHAM	7	1	1	0	9	0.5%
GREENLEE	1	0	1	0	2	0.1%
LA PAZ	1	2	2	0	5	0.3%
MARICOPA	437	234	228	115	1,014	58.3%
MOHAVE	42	17	14	5	78	4.5%
NAVAJO	16	5	10	1	32	1.8%
PIMA	107	81	52	14	254	14.6%
PINAL	73	33	22	13	141	8.1%
SANTA CRUZ	6	1	1	0	8	0.5%
YAVAPAI	10	18	19	4	51	2.9%
YUMA	41	14	11	2	68	3.9%
STATEWIDE	779	428	377	155	1,739	100.0%
% OF TOTAL	44.8%	24.6%	21.7%	8.9%	100.0%	

TABLE 22
NUMBER OF REPORTS ASSIGNED FOR INVESTIGATION BY PRIORITY AND COUNTY
THAT RESULTED IN SUBSTANTIATION FOR PERIOD OF
OCTOBER 1, 2013 THROUGH MARCH 31, 2014

COUNTY	PRIORITY 1	PRIORITY 2	PRIORITY 3	PRIORITY 4	TOTAL	% OF TOTAL
APACHE	6	1	6	2	15	0.5%
COCHISE	16	11	8	2	37	1.2%
COCONINO	17	10	26	5	58	1.8%
GILA	7	1	9	0	17	0.5%
GRAHAM	8	3	4	1	16	0.5%
GREENLEE	2	0	0	0	2	0.1%
LA PAZ	5	2	4	1	12	0.4%
MARICOPA	766	478	440	198	1,882	58.9%
MOHAVE	61	23	16	8	108	3.4%
NAVAJO	20	9	10	4	43	1.4%
PIMA	264	173	145	50	632	19.7%
PINAL	79	48	33	14	174	5.5%
SANTA CRUZ	6	3	1	0	10	0.3%
YAVAPAI	36	19	31	3	89	2.8%
YUMA	43	17	29	6	95	3.0%
STATEWIDE	1,336	798	762	294	3,190	100.0%
% OF TOTAL	41.9%	25.0%	23.9%	9.2%	100.0%	

CHART 15
NUMBER OF REPORTS ASSIGNED FOR INVESTIGATION BY TYPE OF MALTREATMENT
THAT RESULTED IN SUBSTANTIATION

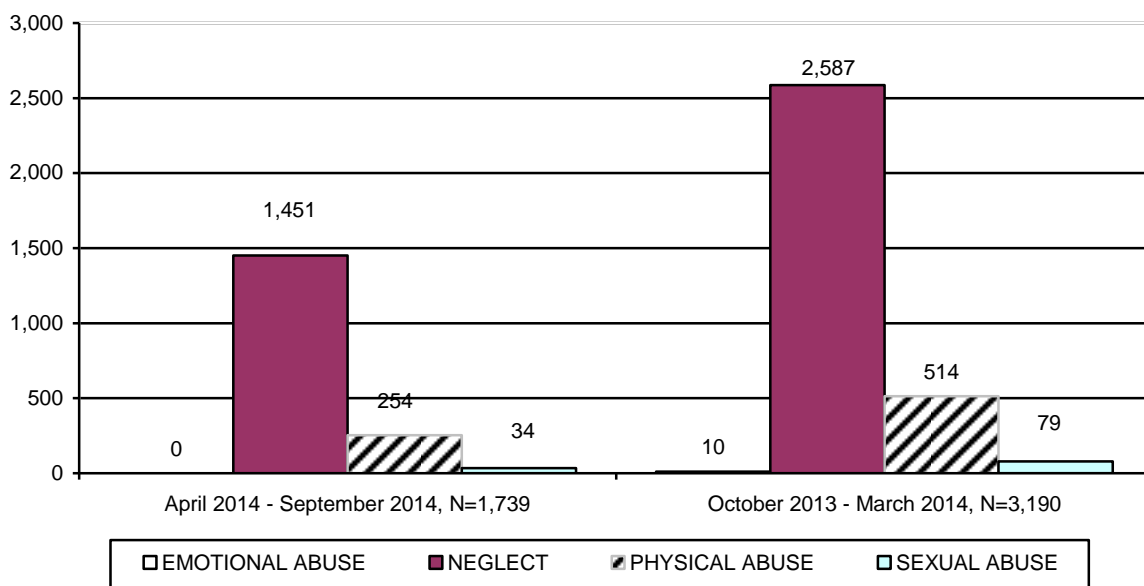


TABLE 23
NUMBER OF REPORTS ASSIGNED FOR INVESTIGATION BY TYPE OF MALTREATMENT
BY COUNTY THAT RESULTED IN SUBSTANTIATION FOR PERIOD OF
APRIL 1, 2014 THROUGH SEPTEMBER 30, 2014

COUNTY	EMOTIONAL ABUSE	NEGLECT	PHYSICAL ABUSE	SEXUAL ABUSE	TOTAL	% OF TOTAL
APACHE	0	5	1	1	7	0.4%
COCHISE	0	22	4	0	26	1.5%
COCONINO	0	20	13	1	34	2.0%
GILA	0	10	0	0	10	0.6%
GRAHAM	0	8	1	0	9	0.5%
GREENLEE	0	2	0	0	2	0.1%
LA PAZ	0	3	2	0	5	0.3%
MARICOPA	0	847	142	25	1,014	58.3%
MOHAVE	0	68	10	0	78	4.5%
NAVAJO	0	26	6	0	32	1.8%
PIMA	0	206	43	5	254	14.6%
PINAL	0	123	16	2	141	8.1%
SANTA CRUZ	0	8	0	0	8	0.5%
YAVAPAI	0	45	6	0	51	2.9%
YUMA	0	58	10	0	68	3.9%
STATEWIDE	0	1,451	254	34	1,739	100.0%
% OF TOTAL	0.0%	83.4%	14.6%	2.0%	100.0%	

TABLE 24
NUMBER OF REPORTS ASSIGNED FOR INVESTIGATION BY TYPE OF MALTREATMENT
BY COUNTY THAT RESULTED IN SUBSTANTIATION FOR PERIOD OF
OCTOBER 1, 2013 THROUGH MARCH 31, 2014

COUNTY	EMOTIONAL ABUSE	NEGLECT	PHYSICAL ABUSE	SEXUAL ABUSE	TOTAL	% OF TOTAL
APACHE	0	8	6	1	15	0.5%
COCHISE	0	31	5	1	37	1.2%
COCONINO	0	41	15	2	58	1.8%
GILA	0	14	3	0	17	0.5%
GRAHAM	0	14	1	1	16	0.5%
GREENLEE	0	2	0	0	2	0.1%
LA PAZ	0	10	2	0	12	0.4%
MARICOPA	6	1,514	316	46	1,882	58.9%
MOHAVE	0	90	14	4	108	3.4%
NAVAJO	1	33	6	3	43	1.4%
PIMA	3	542	80	7	632	19.7%
PINAL	0	145	27	2	174	5.5%
SANTA CRUZ	0	6	4	0	10	0.3%
YAVAPAI	0	67	17	5	89	2.8%
YUMA	0	70	18	7	95	3.0%
STATEWIDE	10	2,587	514	79	3,190	100.0%
% OF TOTAL	0.3%	81.1%	16.1%	2.5%	100.0%	

The preliminary number of investigations that resulted in an unsubstantiated finding for this reporting period was 9,024. Charts 16 and 17 display information on unsubstantiated reports classified by priority and type of maltreatment for the current and prior reporting periods. Tables 25 and 26 provide information on the unsubstantiated investigation findings classified by priority for each county in the current and prior reporting periods. Tables 27 and 28 provide information on the unsubstantiated investigation findings classified by type of maltreatment for each county in the current and prior reporting periods.

CHART 16
NUMBER OF REPORTS ASSIGNED FOR INVESTIGATION BY PRIORITY AND REPORTING PERIOD THAT RESULTED IN UNSUBSTANTIATION

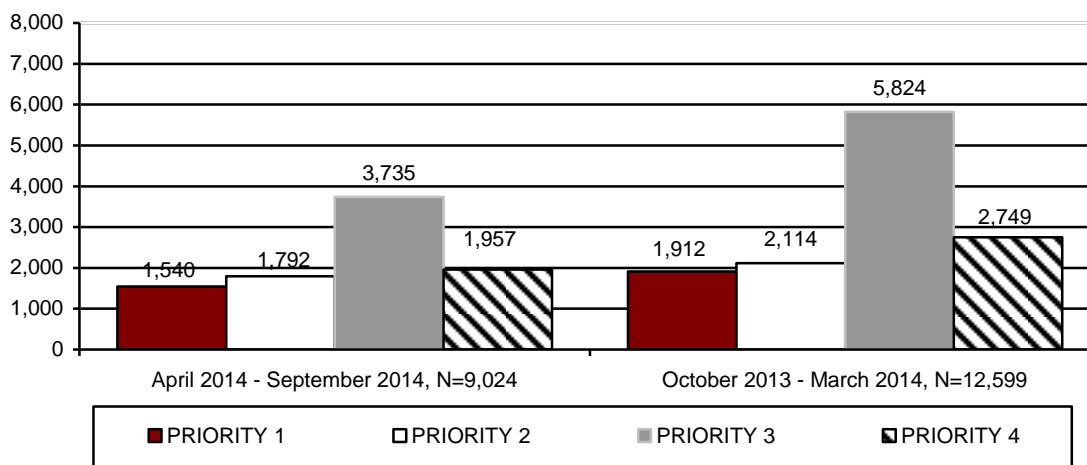


TABLE 25
NUMBER OF REPORTS ASSIGNED FOR INVESTIGATION BY PRIORITY AND COUNTY THAT RESULTED IN UNSUBSTANTIATION FOR PERIOD OF APRIL 1, 2014 THROUGH SEPTEMBER 30, 2014

COUNTY	PRIORITY 1	PRIORITY 2	PRIORITY 3	PRIORITY 4	TOTAL	% OF TOTAL
APACHE	7	13	20	14	54	0.6%
COCHISE	19	28	50	26	123	1.4%
COCONINO	25	46	125	65	261	2.9%
GILA	4	15	19	12	50	0.6%
GRAHAM	11	27	42	10	90	1.0%
GREENLEE	1	9	6	3	19	0.2%
LA PAZ	5	11	19	8	43	0.5%
MARICOPA	880	898	1,952	1,079	4,809	53.2%
MOHAVE	50	58	119	59	286	3.2%
NAVAJO	35	61	105	47	248	2.8%
PIMA	328	387	796	374	1,885	20.9%
PINAL	99	124	232	125	580	6.4%
SANTA CRUZ	2	2	4	3	11	0.1%
YAVAPAI	32	45	124	64	265	2.9%
YUMA	42	68	122	68	300	3.3%
STATEWIDE	1,540	1,792	3,735	1,957	9,024	100.0%
% OF TOTAL	17.1%	19.9%	41.3%	21.7%	100.0%	

TABLE 26
NUMBER OF REPORTS ASSIGNED FOR INVESTIGATION BY PRIORITY AND COUNTY
THAT RESULTED IN UNSUBSTANTIATION FOR PERIOD OF
OCTOBER 1, 2013 THROUGH MARCH 31, 2014

COUNTY	PRIORITY 1	PRIORITY 2	PRIORITY 3	PRIORITY 4	TOTAL	% OF TOTAL
APACHE	7	14	32	11	64	0.5%
COCHISE	24	27	73	29	153	1.2%
COCONINO	44	42	147	54	287	2.3%
GILA	19	13	37	10	79	0.6%
GRAHAM	11	19	42	20	92	0.7%
GREENLEE	1	7	8	6	22	0.2%
LA PAZ	7	9	25	11	52	0.4%
MARICOPA	1,181	1,170	3,246	1,590	7,187	57.1%
MOHAVE	46	87	231	100	464	3.7%
NAVAJO	37	51	131	56	275	2.2%
PIMA	296	386	1,062	502	2,246	17.8%
PINAL	132	147	350	175	804	6.4%
SANTA CRUZ	2	4	8	4	18	0.1%
YAVAPAI	53	74	224	105	456	3.6%
YUMA	52	64	208	76	400	3.2%
STATEWIDE	1,912	2,114	5,824	2,749	12,599	100.0%
% OF TOTAL	15.2%	16.8%	46.2%	21.8%	100.0%	

CHART 17
NUMBER OF REPORTS ASSIGNED FOR INVESTIGATION BY TYPE OF MALTREATMENT
THAT RESULTED IN UNSUBSTANTIATION BY REPORTING PERIOD

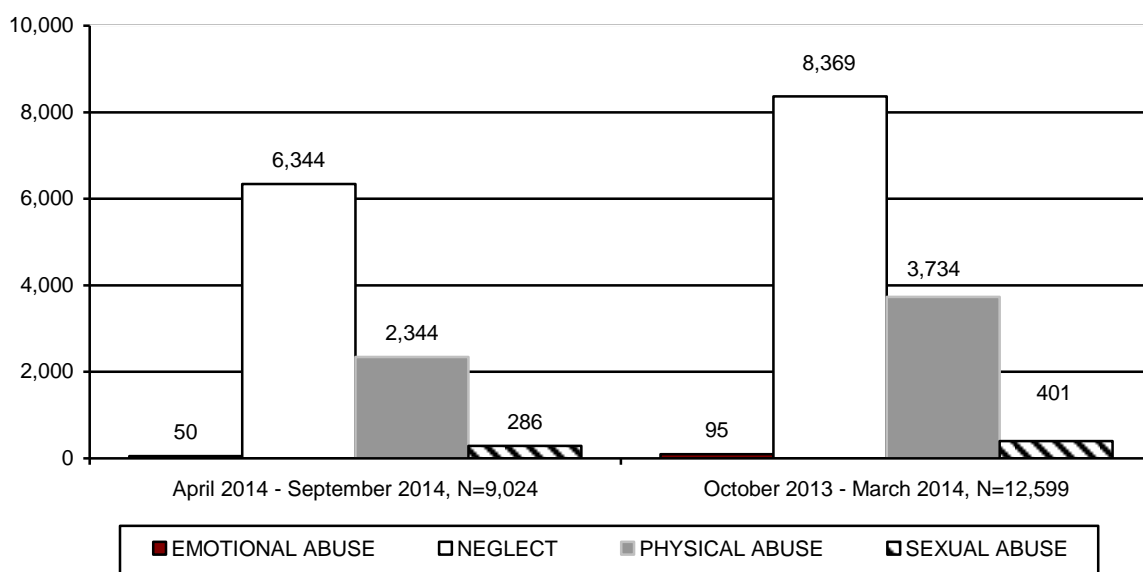


TABLE 27
NUMBER OF REPORTS ASSIGNED FOR INVESTIGATION BY TYPE OF MALTREATMENT
BY COUNTY THAT RESULTED IN UNSUBSTANTIATION FOR PERIOD OF
APRIL 1, 2014 THROUGH SEPTEMBER 30, 2014

COUNTY	EMOTIONAL ABUSE	NEGLECT	PHYSICAL ABUSE	SEXUAL ABUSE	TOTAL	% OF TOTAL
APACHE	1	42	10	1	54	0.6%
COCHISE	1	94	24	4	123	1.4%
COCONINO	0	191	58	12	261	2.9%
GILA	0	42	7	1	50	0.6%
GRAHAM	1	63	22	4	90	1.0%
GREENLEE	0	16	3	0	19	0.2%
LA PAZ	0	30	11	2	43	0.5%
MARICOPA	30	3,337	1,295	147	4,809	53.2%
MOHAVE	4	207	71	4	286	3.2%
NAVAJO	2	178	56	12	248	2.8%
PIMA	6	1,342	483	54	1,885	20.9%
PINAL	2	397	163	18	580	6.4%
SANTA CRUZ	0	8	3	0	11	0.1%
YAVAPAI	1	187	67	10	265	2.9%
YUMA	2	210	71	17	300	3.3%
STATEWIDE	50	6,344	2,344	286	9,024	100.0%
% OF TOTAL	0.6%	70.2%	26.0%	3.2%	100.0%	

TABLE 28
NUMBER OF REPORTS ASSIGNED FOR INVESTIGATION BY TYPE OF MALTREATMENT
BY COUNTY THAT RESULTED IN UNSUBSTANTIATION FOR PERIOD OF
OCTOBER 1, 2013 THROUGH MARCH 31, 2014

COUNTY	EMOTIONAL ABUSE	NEGLECT	PHYSICAL ABUSE	SEXUAL ABUSE	TOTAL	% OF TOTAL
APACHE	1	44	15	4	64	0.5%
COCHISE	1	110	38	4	153	1.2%
COCONINO	1	194	80	12	287	2.3%
GILA	1	52	25	1	79	0.6%
GRAHAM	0	69	21	2	92	0.7%
GREENLEE	0	16	5	1	22	0.2%
LA PAZ	1	39	11	1	52	0.4%
MARICOPA	59	4,639	2,281	208	7,187	57.1%
MOHAVE	1	336	112	15	464	3.7%
NAVAJO	2	188	73	12	275	2.2%
PIMA	14	1,507	639	86	2,246	17.8%
PINAL	5	546	223	30	804	6.4%
SANTA CRUZ	0	15	1	2	18	0.1%
YAVAPAI	2	327	115	12	456	3.6%
YUMA	7	287	95	11	400	3.2%
STATEWIDE	95	8,369	3,734	401	12,599	100.0%
% OF TOTAL	0.8%	66.4%	29.6%	3.2%	100.0%	

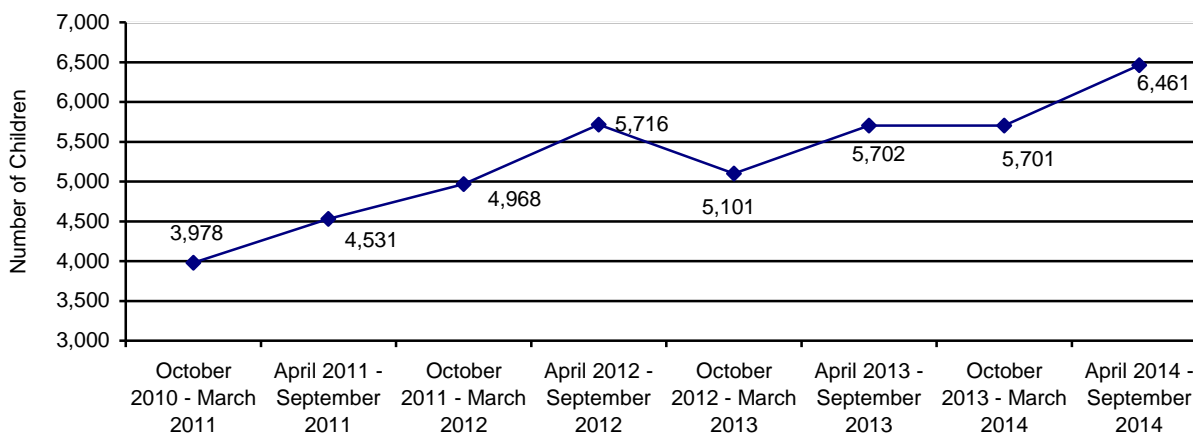
SAFE HAVEN INFANTS

Communications from providers indicate that there were six newborn infants delivered to Safe Haven providers during the April 2014 – September 2014 reporting period. This compares to no infants being delivered to Safe Haven providers during the prior reporting period.

CHILDREN ENTERING OUT-OF-HOME CARE

During the current reporting period, 6,461 children entered care, which represents a 13.3% increase in children entering care over the prior reporting period and a 13.3% increase over the same reporting period last year. This increase in the number of children entering care is not unexpected, however, as the number of reports of abuse and neglect increased by 9.1%. Chart 18 displays children entering out-of-home care by reporting period. As can be seen from the chart below, the dramatic increase in children entering out-of-home care has continued since FY 2011. Since that time, the number of children entering out-of-home care has remained high, which is a reflection of the growth in the number of reports received by the Hotline (see Chart 1 for number of reports detail).

**CHART 18
TOTAL CHILDREN ENTERING OUT-OF-HOME CARE BY REPORTING PERIOD**



CHILDREN ENTERING OUT-OF-HOME CARE – VOLUNTARY SERVICES

The number of children entering out-of-home placement through voluntary foster care agreements for the current reporting period was 189, which represents 2.9% of the children entering care this reporting period. Information on the county level distribution of voluntary placements into out-of-home care can be found in Table 29 for the current reporting period and in Table 30 for the prior reporting period.

Voluntary foster care may be provided when the parents or legal guardians of a child have requested such assistance and have signed a legally binding written agreement for the temporary placement of the child in foster care while risk factors are addressed to enable the child to live safely at home. A.R.S. § 8-806 authorizes the Department to provide voluntary foster care placement for children for a period not to exceed 90 days and no more than twice within 24 consecutive months.

TABLE 29
NUMBER OF CHILDREN ENTERING OUT-OF-HOME CARE BY COUNTY WHO ARE
VOLUNTARY PLACEMENTS FOR CHILDREN UNDER THE AGE OF EIGHTEEN FOR THE
PERIOD OF APRIL 1, 2014 THROUGH SEPTEMBER 30, 2014

COUNTY	NUMBER OF CHILDREN REMOVED	% OF TOTAL REMOVALS	NUMBER OF CHILDREN ENTERING OUT-OF-HOME CARE UNDER THE AGE OF EIGHTEEN WHO ARE VOLUNTARY PLACEMENTS	% OF CHILDREN ENTERING OUT-OF-HOME CARE WHO ARE VOLUNTARY PLACEMENTS
APACHE	23	0.4%	1	0.5%
COCHISE	90	1.4%	5	2.7%
COCONINO	41	0.6%	14	7.4%
GILA	44	0.7%	0	0.0%
GRAHAM	31	0.5%	2	1.1%
GREENLEE	3	0.1%	0	0.0%
LA PAZ	16	0.3%	0	0.0%
MARICOPA	3,928	60.7%	58	30.7%
MOHAVE	227	3.5%	3	1.6%
NAVAJO	44	0.7%	3	1.6%
PIMA	1,202	18.6%	67	35.4%
PINAL	454	7.0%	1	0.5%
SANTA CRUZ	40	0.6%	0	0.0%
YAVAPAI	200	3.1%	29	15.3%
YUMA	118	1.8%	6	3.2%
STATEWIDE	6,461	100.0%	189	100.0%

TABLE 30
NUMBER OF CHILDREN ENTERING OUT-OF-HOME CARE BY COUNTY WHO ARE
VOLUNTARY PLACEMENTS FOR CHILDREN UNDER THE AGE OF EIGHTEEN FOR THE
PERIOD OF OCTOBER 1, 2013 THROUGH MARCH 31, 2014

COUNTY	NUMBER OF CHILDREN REMOVED	% OF TOTAL REMOVALS	NUMBER OF CHILDREN ENTERING OUT-OF-HOME CARE UNDER THE AGE OF EIGHTEEN WHO ARE VOLUNTARY PLACEMENTS	% OF CHILDREN ENTERING OUT-OF-HOME CARE WHO ARE VOLUNTARY PLACEMENTS
APACHE	31	0.5%	0	0.0%
COCHISE	70	1.2%	0	0.0%
COCONINO	38	0.7%	7	7.8%
GILA	54	1.0%	4	4.4%
GRAHAM	23	0.4%	0	0.0%
GREENLEE	2	<0.1%	0	0.0%
LA PAZ	12	0.2%	0	0.0%
MARICOPA	3,638	63.8%	16	17.8%
MOHAVE	181	3.2%	7	7.8%
NAVAJO	60	1.1%	3	3.3%
PIMA	1,136	19.9%	37	41.1%
PINAL	225	4.0%	0	0.0%
SANTA CRUZ	25	0.4%	0	0.0%
YAVAPAI	109	1.9%	11	12.2%
YUMA	97	1.7%	5	5.6%
STATEWIDE	5,701	100.0%	90	100.0%

NUMBER OF CHILDREN ENTERING OUT-OF-HOME CARE

The total number of children entering out-of-home care (of which voluntary placements are a subset) in the current reporting period was 6,461, which represents an increase of 13.3% in the total number of children entering out-of-home care from the prior reporting period. Chart 19 displays the number of removed children, and then further differentiates new removals by providing the number with a prior removal in the past 12 months and the past 12 to 24 months. Information on the county level distribution of children entering out-of-home care can be found in Table 31 for the current period and Table 32 for the prior period.

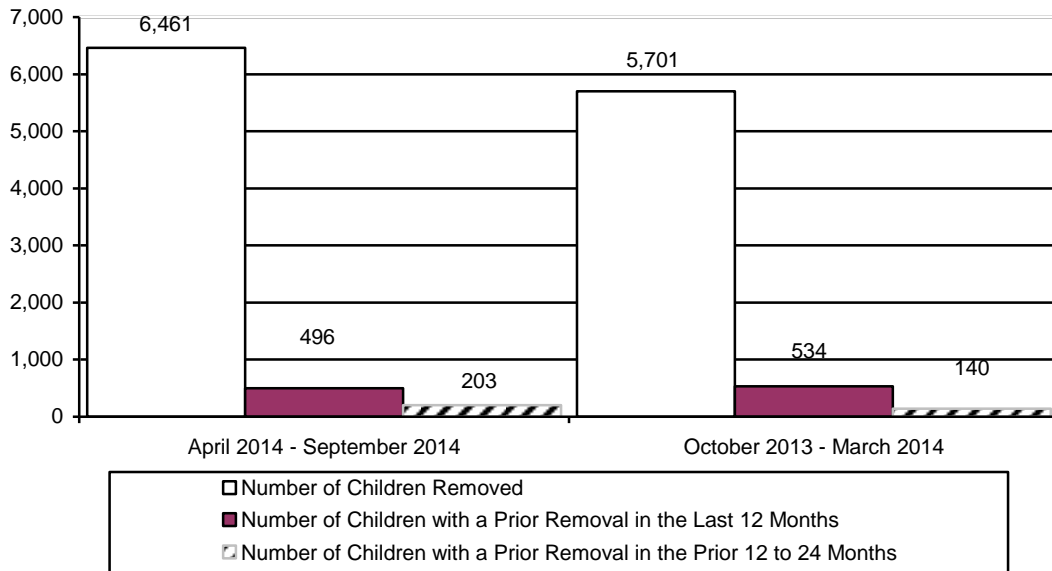
**TABLE 31
NUMBER OF CHILDREN ENTERING OUT-OF-HOME CARE BY COUNTY FOR THE
PERIOD OF APRIL 1, 2014 THROUGH SEPTEMBER 30, 2014**

COUNTY	NUMBER OF CHILDREN REMOVED	% OF TOTAL REMOVALS	NUMBER OF CHILDREN WITH A PRIOR REMOVAL IN THE LAST 12 MONTHS	% OF CHILDREN WITH A PRIOR REMOVAL IN THE LAST 12 MONTHS	NUMBER OF CHILDREN WITH A REMOVAL IN THE PRIOR 12 TO 24 MONTHS	% OF CHILDREN WITH A PRIOR REMOVAL IN THE PRIOR 12 TO 24 MONTHS
APACHE	23	0.4%	2	8.7%	0	0.0%
COCHISE	90	1.4%	8	8.9%	4	4.4%
COCONINO	41	0.6%	2	4.9%	0	0.0%
GILA	44	0.7%	4	9.1%	1	2.3%
GRAHAM	31	0.5%	0	0.0%	0	0.0%
GREENLEE	3	0.1%	0	0.0%	0	0.0%
LA PAZ	16	0.3%	0	0.0%	0	0.0%
MARICOPA	3,928	60.7%	292	7.4%	107	2.7%
MOHAVE	227	3.5%	14	6.2%	4	1.8%
NAVAJO	44	0.7%	9	20.5%	0	0.0%
PIMA	1,202	18.6%	115	9.6%	59	4.9%
PINAL	454	7.0%	20	4.4%	5	1.1%
SANTA CRUZ	40	0.6%	1	2.5%	0	0.0%
YAVAPAI	200	3.1%	21	10.5%	20	10.0%
YUMA	118	1.8%	8	6.8%	3	2.5%
STATEWIDE	6,461	100.0%	496	7.7%	203	3.1%

**TABLE 32
NUMBER OF CHILDREN ENTERING OUT-OF-HOME CARE BY COUNTY FOR THE
PERIOD OF OCTOBER 1, 2013 THROUGH MARCH 31, 2014**

COUNTY	NUMBER OF CHILDREN REMOVED	% OF TOTAL REMOVALS	NUMBER OF CHILDREN WITH A PRIOR REMOVAL IN THE LAST 12 MONTHS	% OF CHILDREN WITH A PRIOR REMOVAL IN THE LAST 12 MONTHS	NUMBER OF CHILDREN WITH A REMOVAL IN THE PRIOR 12 TO 24 MONTHS	% OF CHILDREN WITH A PRIOR REMOVAL IN THE PRIOR 12 TO 24 MONTHS
APACHE	31	0.5%	3	9.7%	0	0.0%
COCHISE	70	1.2%	6	8.6%	1	1.4%
COCONINO	38	0.7%	3	7.9%	1	2.6%
GILA	54	1.0%	6	11.1%	0	0.0%
GRAHAM	23	0.4%	1	4.3%	1	4.3%
GREENLEE	2	<0.1%	0	0.0%	0	0.0%
LA PAZ	12	0.2%	2	16.7%	0	0.0%
MARICOPA	3,638	63.8%	326	9.0%	71	2.0%
MOHAVE	181	3.2%	20	11.0%	6	3.3%
NAVAJO	60	1.1%	10	16.7%	6	10.0%
PIMA	1,136	19.9%	123	10.8%	40	3.5%
PINAL	225	4.0%	20	8.9%	10	4.4%
SANTA CRUZ	25	0.4%	0	0.0%	4	16.0%
YAVAPAI	109	1.9%	8	7.3%	0	0.0%
YUMA	97	1.7%	6	6.2%	0	0.0%
STATEWIDE	5,701	100.0%	534	9.4%	140	2.5%

CHART 19
NUMBER OF CHILDREN ENTERING OUT-OF-HOME CARE BY REPORTING PERIOD



CHILDREN IN OUT-OF-HOME CARE

Chart 20 below shows the number of children in out-of-home care on the final day of the current and past reporting periods.

On the final day of the current reporting period, 13,820 (81.3%) children were placed in family settings either with relatives or in foster homes. Placement information for children in out-of-home care for the current and prior reporting periods can be found in Chart 27. See Table 33 for the out-of-home population organized to show the number of children, grouped by age, in each placement type for the current reporting period.

For information on the age distribution of children in out-of-home care, see Chart 24, which displays this information for the current and prior reporting periods. The ethnicity of children in out-of-home care for the current and prior reporting periods is displayed in Chart 25.

**CHART 20
NUMBER OF CHILDREN IN OUT-OF-HOME CARE ON THE LAST DAY OF THE
REPORTING PERIOD BY REPORTING PERIOD**

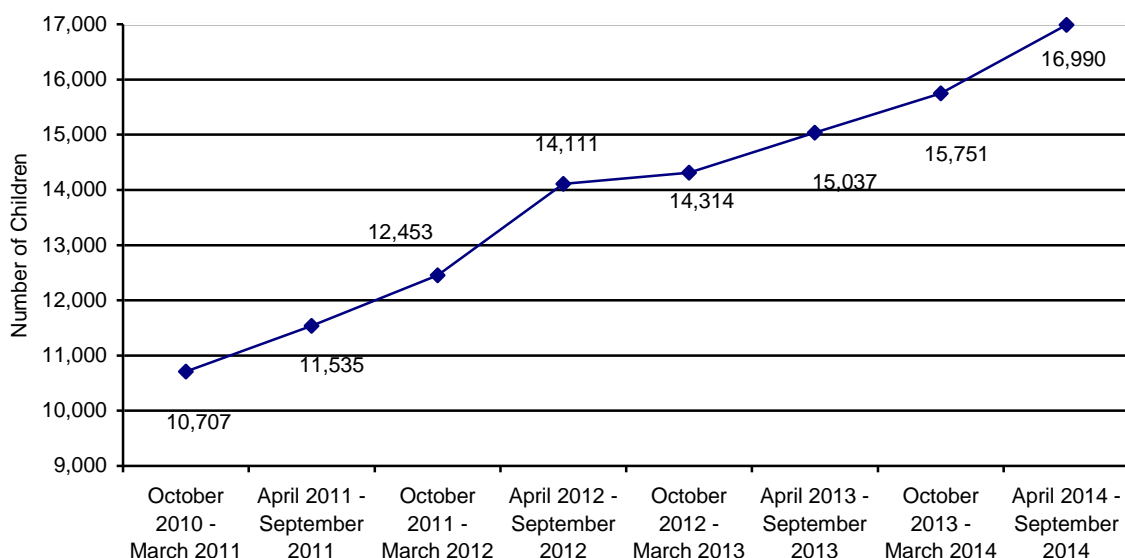


Chart 21 displays an increase in the number of young children ages 0-6 placed in group homes. In comparing March 2008 to September 2014, the number of young children in group homes, increased by 57 children. Chart 22 displays the increase in the number of young children ages 0-3 placed in shelter care.

In comparing March 2008 to September 2014, the number of young children in shelters, increased by 18 children. Chart 23 shows that the average length of time in shelter care has decreased; comparing March 2008 to September 2014, the average length of stay in shelter decreased from 103.4 to 90.0 days, a decrease of 13.4 days or 13.0%. The Department recognizes that shelter care is rarely, if ever, the best placement for children and continues to strive to place children in the best possible environment to ensure the safety and well-being of the child.

CHART 21
THE NUMBER OF CHILDREN IN GROUP HOMES AGES 0 THROUGH 6⁴

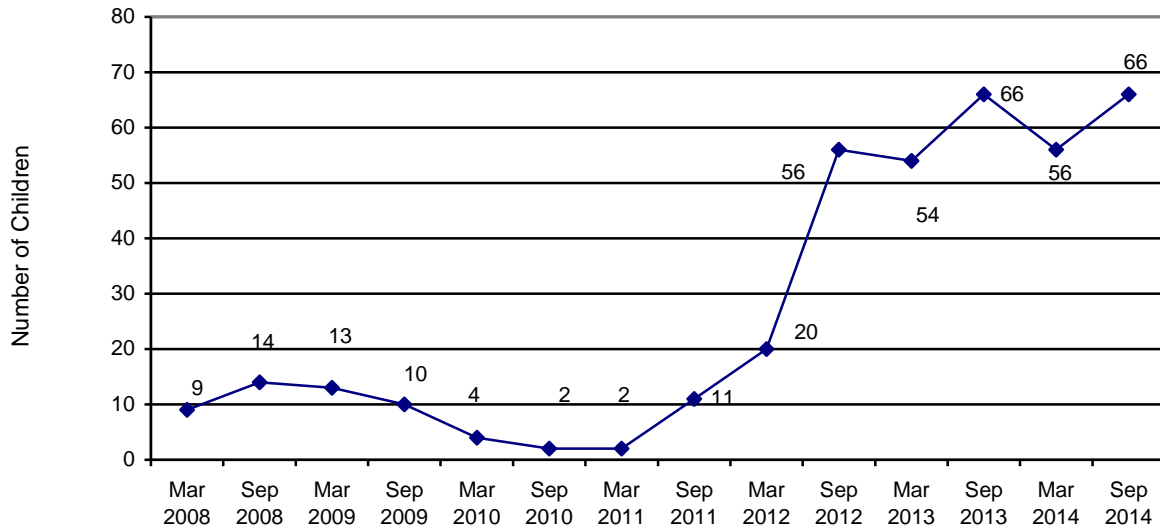
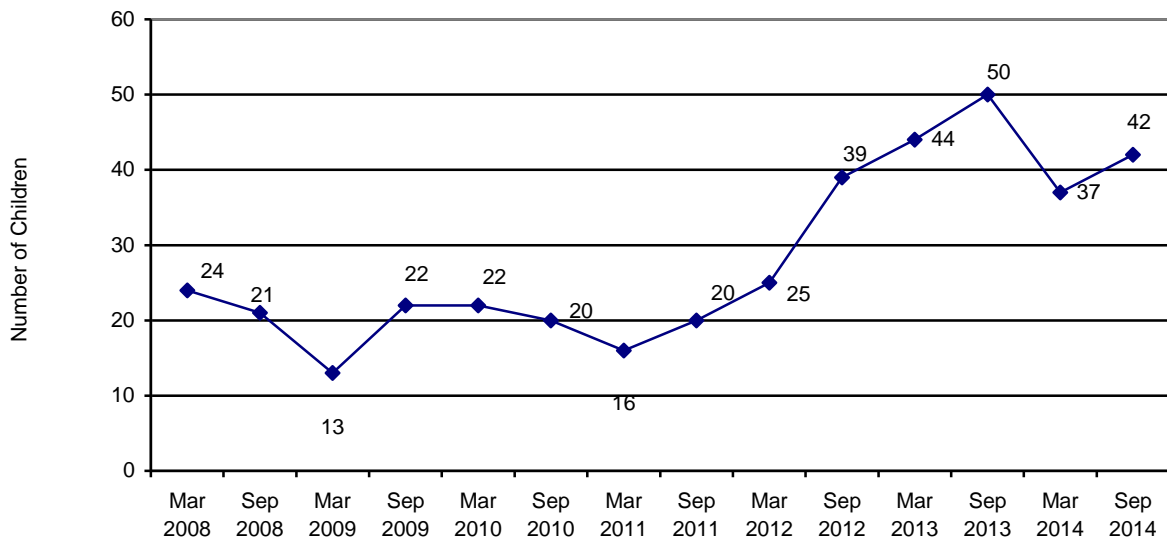


CHART 22
THE NUMBER OF CHILDREN IN SHELTER CARE AGES 0 THROUGH 3



⁴ This excludes infants placed with their mothers and children placed in foster home group models.

CHART 23
THE AVERAGE LENGTH OF STAY FOR CHILDREN AGES 0 TO 3 IN A SHELTER PLACEMENT ON THE LAST DAY OF THE REPORTING PERIOD

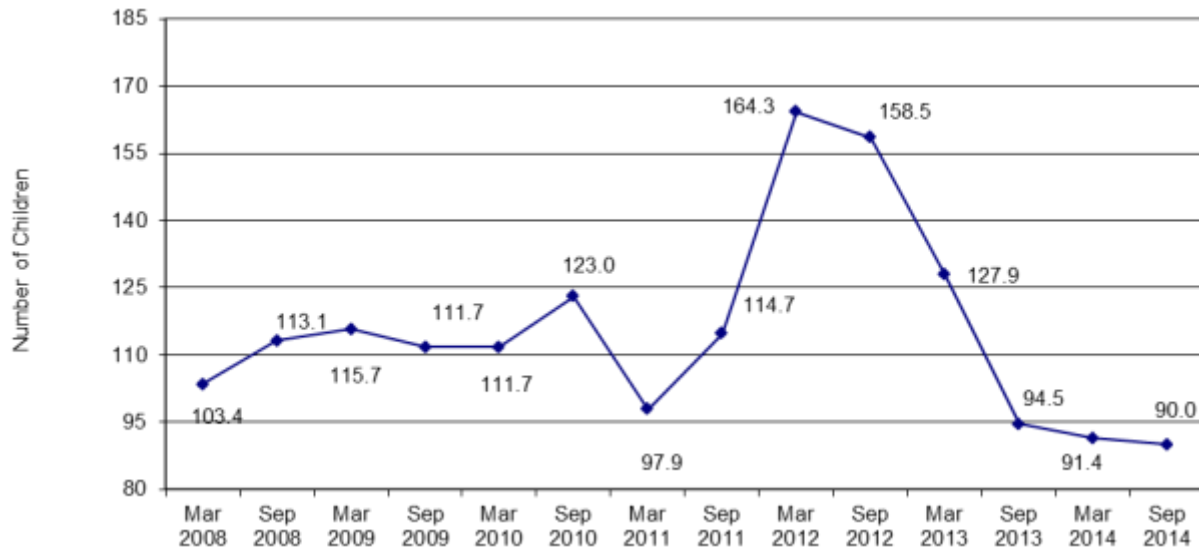


CHART 24
THE NUMBER OF CHILDREN IN OUT-OF-HOME CARE BY AGE

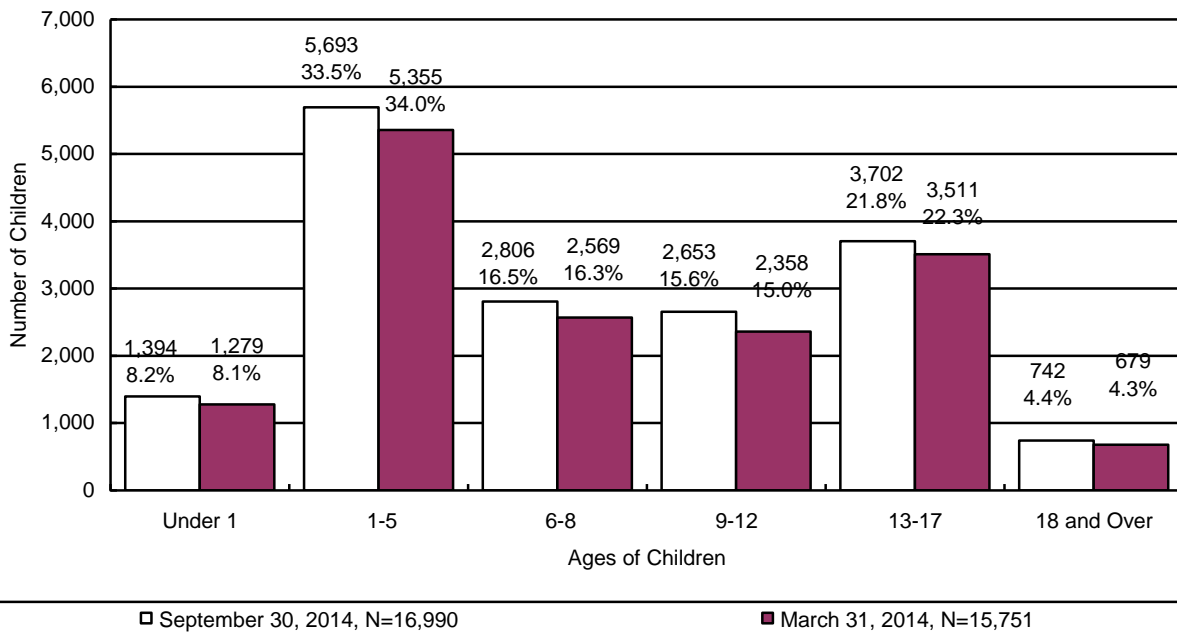
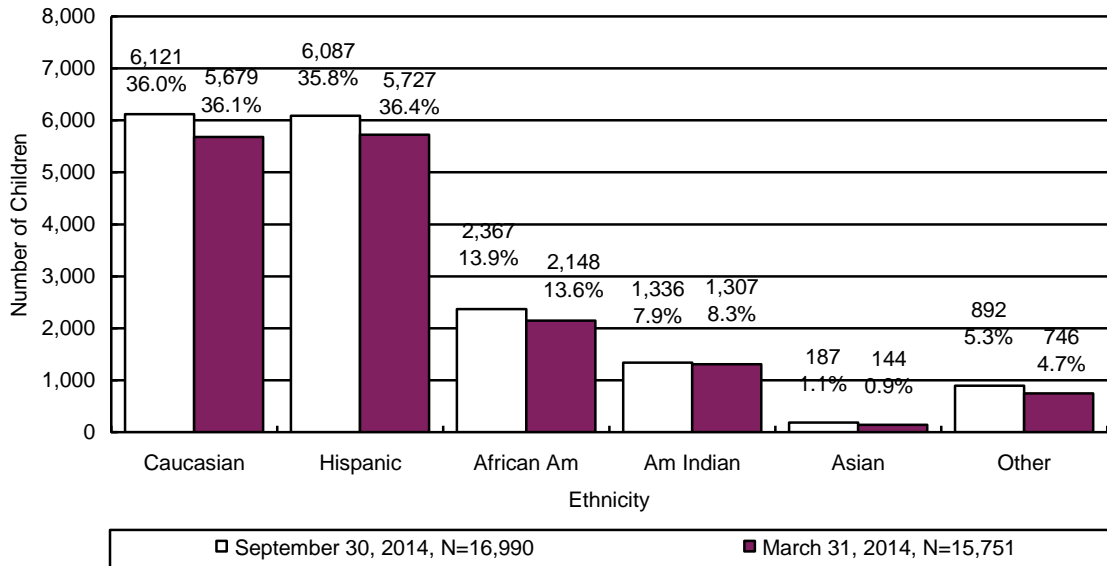


CHART 25
THE NUMBER OF CHILDREN IN OUT-OF-HOME CARE BY ETHNICITY



For 54.9% of the children in out-of-home care, family reunification remains the primary case plan goal. See Chart 26 for additional detail on the case plan goals of children in out-of-home care.

CHART 26
THE NUMBER OF CHILDREN IN OUT-OF-HOME CARE BY CASE PLAN GOAL

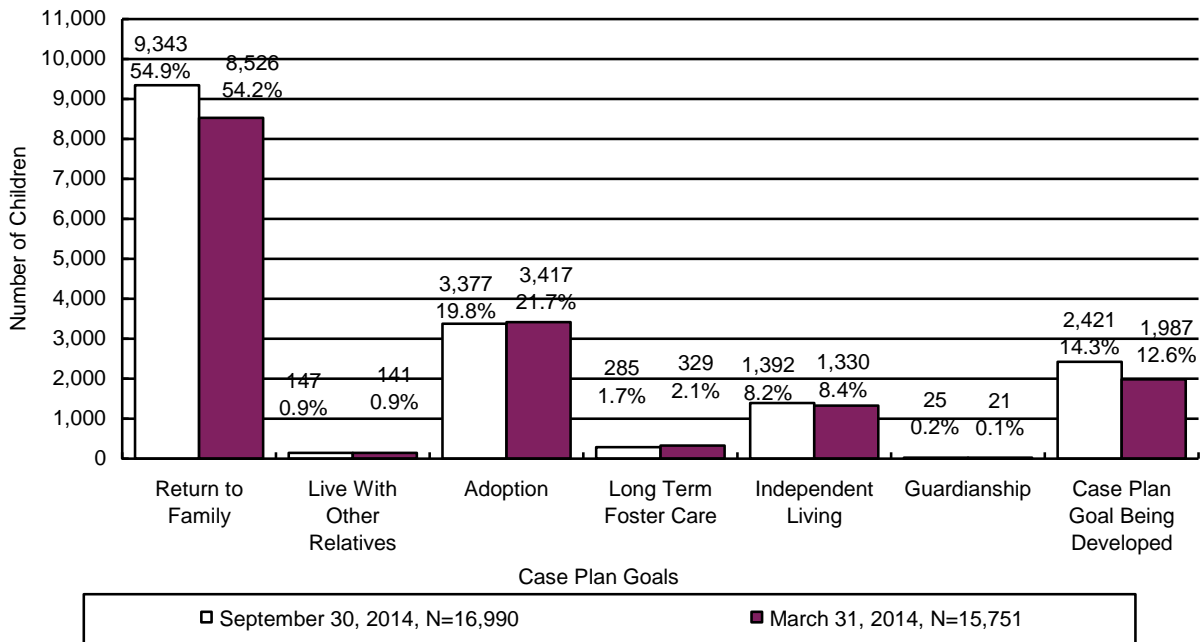
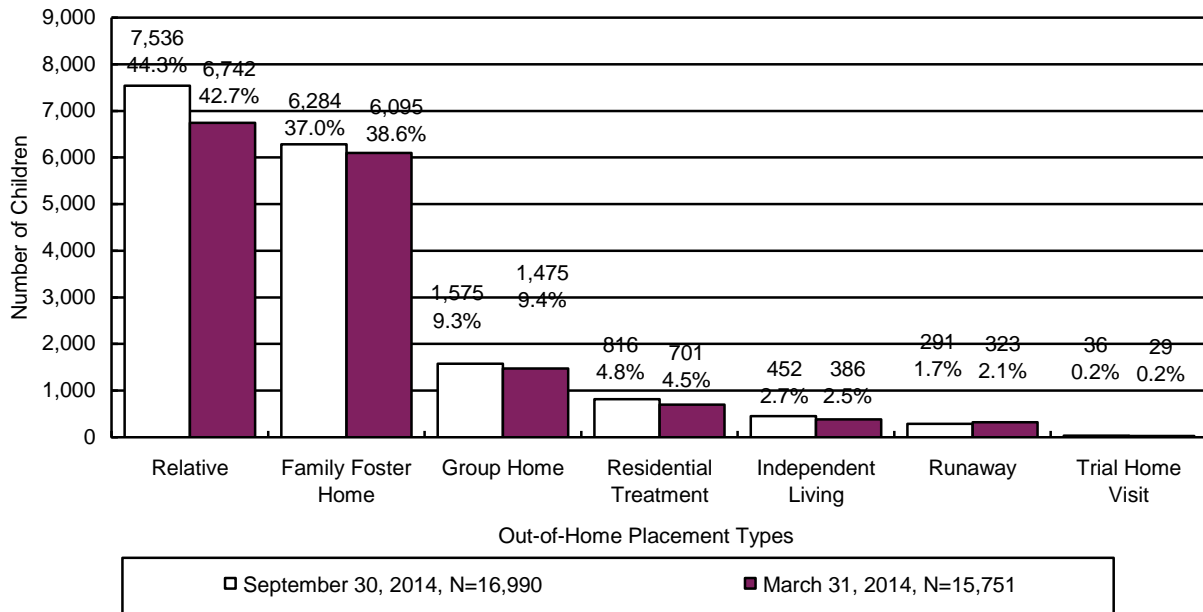


CHART 27
THE NUMBER OF CHILDREN IN OUT-OF-HOME CARE BY PLACEMENT TYPE⁵



⁵ In every reporting cycle, DCS has children who in the CHILDS database do not have a placement identified when the data extract has run. It has been the historical practice of the Department to proportionally allocate the unidentified children across the placement types. The Department will develop strategies to minimize the need for this allocation in future reports.

**TABLE 33
THE NUMBER OF CHILDREN IN OUT-OF-HOME CARE BY PLACEMENT TYPE AND AGE**

	RELATIVE	FAMILY FOSTER	GROUP HOME	RESIDENTIAL TREATMENT ⁶	INDEPENDENT LIVING	RUNAWAY / ABSCONDED ⁷	TRIAL HOME VISIT	TOTAL	% OF TOTAL
UNDER 1	648	722	1	20	0	2	1	1,394	8.1%
1	747	707	6	21	0	0	1	1,482	8.6%
2	623	553	7	17	0	2	1	1,203	7.0%
3	571	442	15	12	0	1	1	1,042	6.1%
4	544	402	12	23	0	3	1	985	5.8%
5	557	394	14	13	0	1	2	981	5.8%
6	539	427	40	21	0	0	1	1,028	6.1%
7	514	335	40	19	0	0	5	913	5.4%
8	463	337	45	19	0	0	1	865	5.1%
9	424	300	55	29	0	0	2	810	4.8%
10	365	224	59	13	0	0	3	664	3.9%
11	268	222	74	23	0	0	0	587	3.5%
12	251	206	86	45	0	2	2	592	3.5%
13	228	192	124	50	0	6	1	601	3.5%
14	222	199	165	61	0	7	0	654	3.9%
15	205	182	204	92	0	40	1	724	4.3%
16	196	182	241	101	0	87	4	811	4.8%
17	144	197	310	137	7	110	7	912	5.4%
18 AND OLDER	27	61	77	100	445	30	2	742	4.4%
TOTAL	7,536	6,284	1,575	816	452	291	36	16,990	100.0%
% OF TOTAL	44.3%	37.0%	9.3%	4.8%	2.7%	1.7%	0.2%	100.0%	

⁶ This category includes shelter, detention, and hospital placement types.

⁷ This category includes children whose parents absconded with the child(ren) during this reporting period.

During the reporting period 868 children remained in a shelter or receiving home for more than 21 consecutive days. Chart 28 displays children by age grouping who remained in shelter more than 21 days for the current reporting period.

CHART 28
NUMBER AND PERCENTAGE OF CHILDREN IN SHELTER OR RECEIVING HOMES FOR MORE THAN 21 CONSECUTIVE DAYS BY AGE OF CHILD⁸

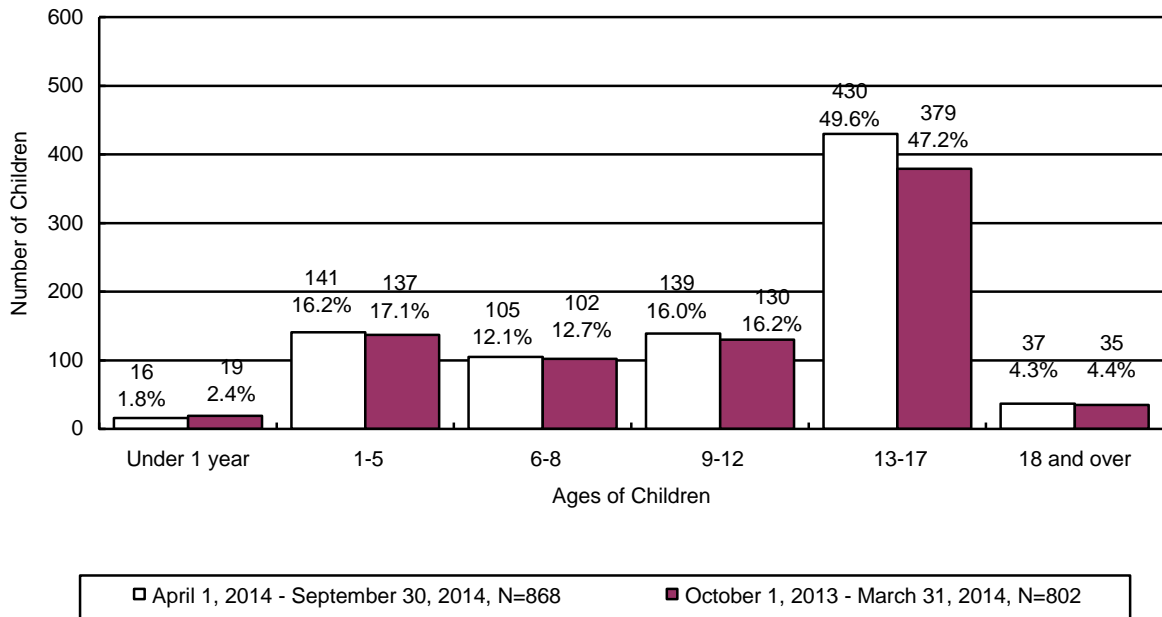
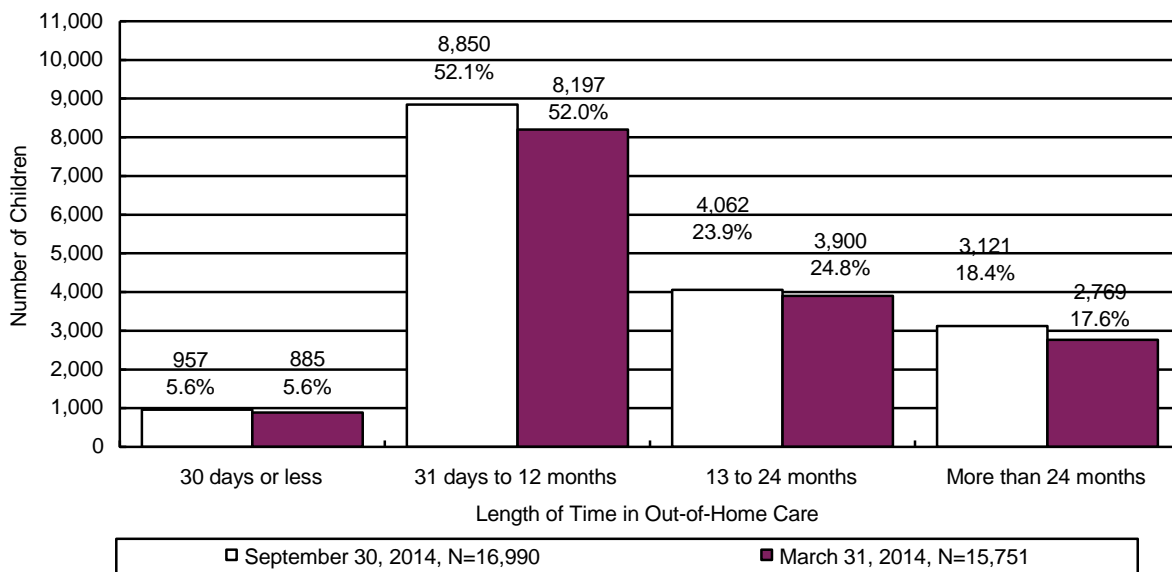


CHART 29
THE NUMBER OF CHILDREN IN OUT-OF-HOME CARE BY LENGTH OF TIME IN CARE



⁸ The chart displays children who spent more than 21 days in shelter during the period. This number differs from the other out-of-home charts as they display children in out-of-home care on the last day of the reporting period.

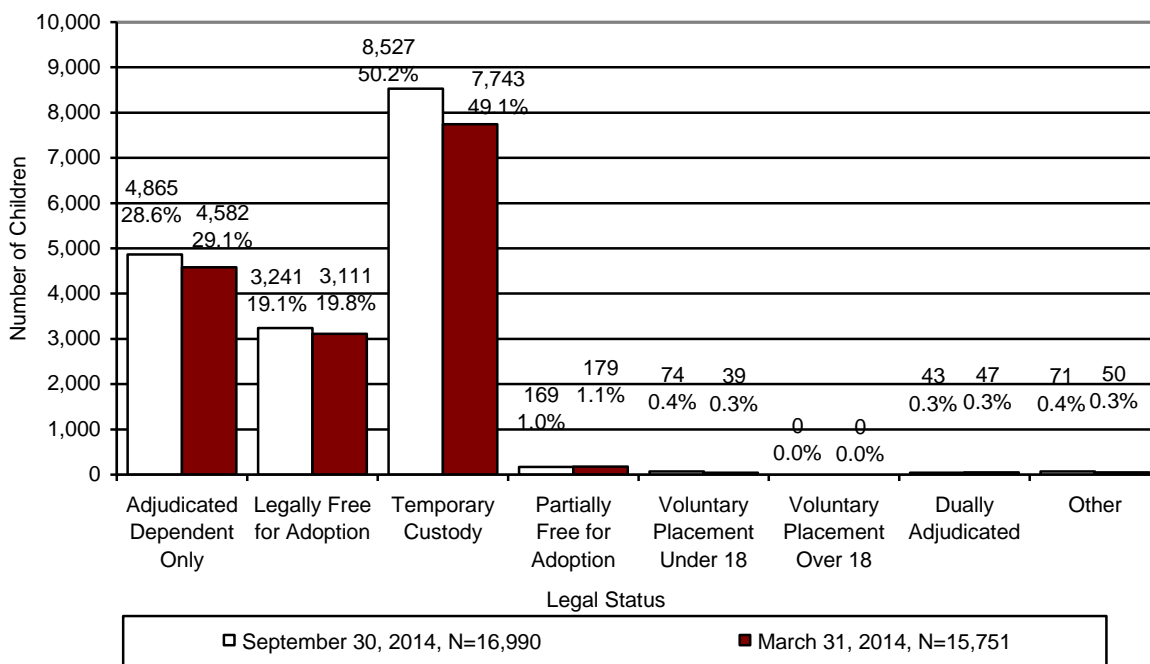
Information on the number of placements in terms of the average, median, and range for children in out-of-home care on the last day of the reporting period is shown in Table 34.

**TABLE 34
PLACEMENT INFORMATION FOR CHILDREN IN
OUT-OF-HOME CARE ON SEPTEMBER 30, 2014**

	Placements
Average	2.3
Median	2.0
Range Minimum	1
Range Maximum	43 ⁹

Chart 30 displays the legal status of the children in out-of-home care for the current and prior reporting periods. As is shown by the graph, the vast majority of children in out-of-home care fall into one of three legal status⁹ – adjudicated dependent, legally free for adoption, and children in the Department’s temporary custody.

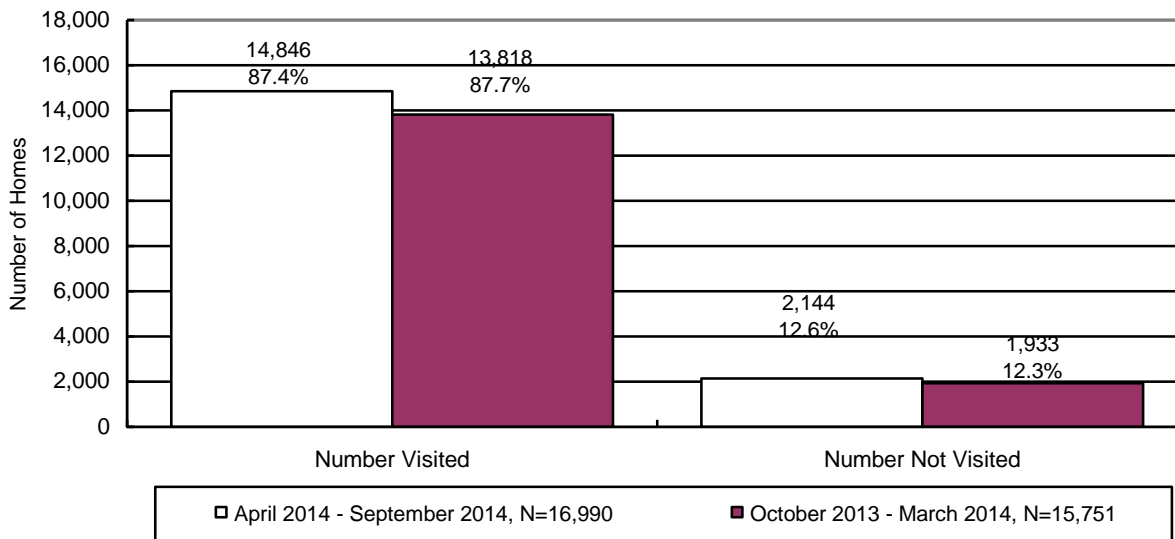
**CHART 30
CHILDREN IN OUT-OF-HOME CARE BY LEGAL STATUS**



⁹ Some children are so impacted by the severity of the abuse they have suffered that they become unable to form meaningful relationships or to respond to services. These children tend to go through multiple placements with numerous individuals and agencies.

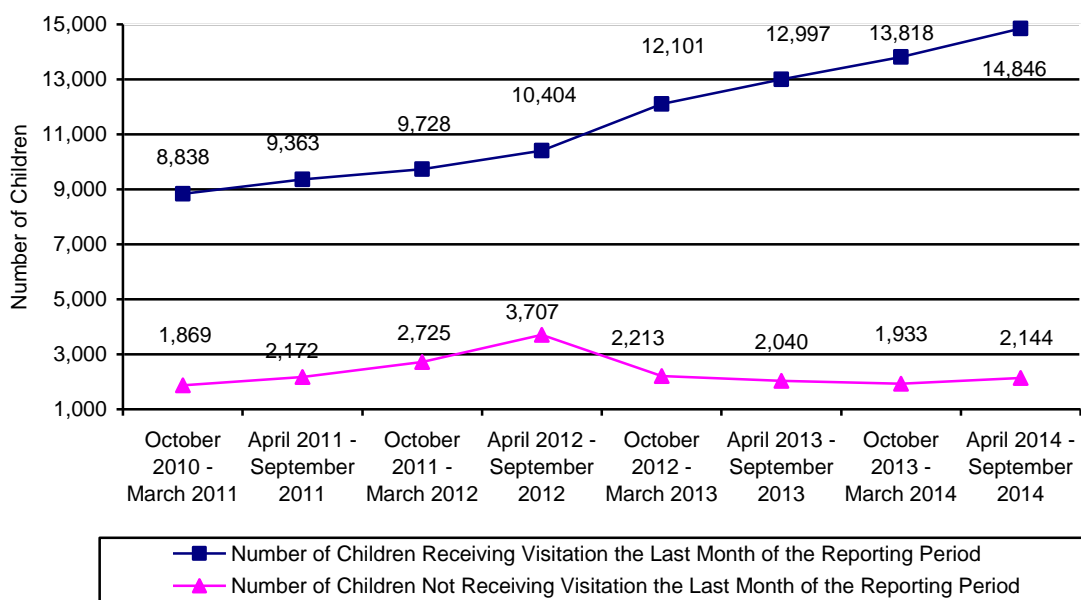
At the end of the reporting period there were 16,990 children in out-of-home care who required visitation. Of these children, visitation was documented in the automated system for 14,846 children.

CHART 31
THE NUMBER AND PERCENTAGE OF CHILDREN WHO RECEIVED THE REQUIRED VISITATION



Department policy requires specialists to have face-to-face contact with all parents at least once a month, including any alleged parents and parents residing outside of the child’s home where the case plan goal is family reunification. During the current reporting period, there were 2,528 parents who had a child with the case plan goal of return home. Of those parents requiring visitation, 1,315 (52.0%) received the required visitation. This number does not reflect attempted visitation where contact with the parent(s) did not take place.

CHART 32
NUMBER OF CHILDREN RECEIVING AND NOT RECEIVING VISITATION BY REPORTING PERIOD



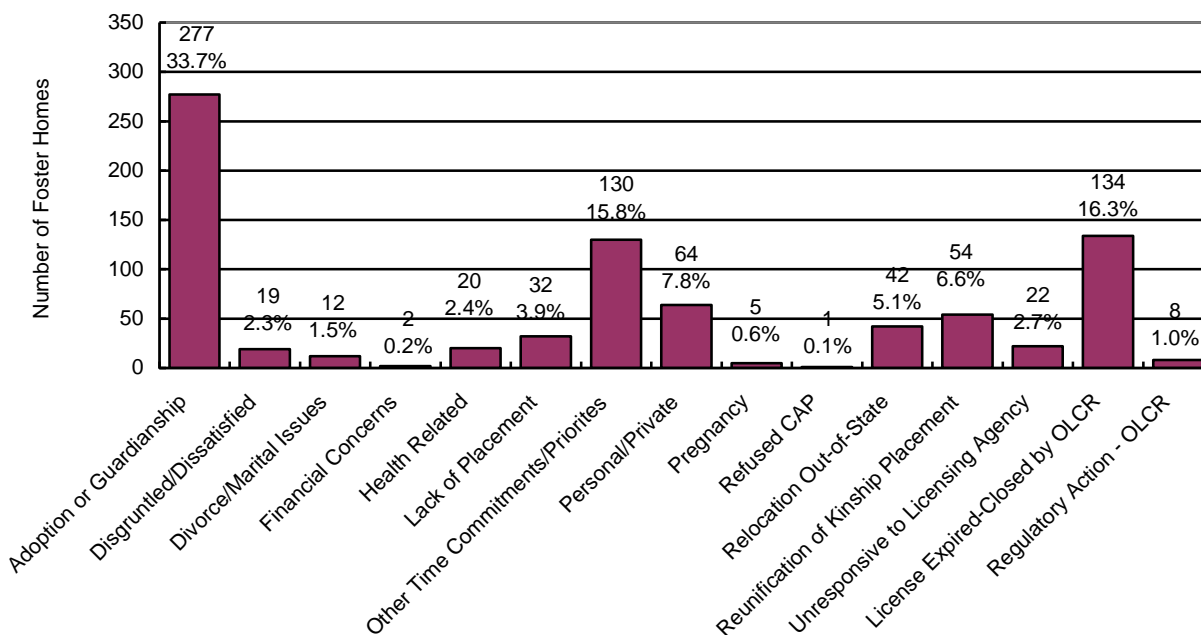
FOSTER HOME LICENSING, CLOSURES, & VISITATION

As of September 30, 2014, there were 4,397¹⁰ foster homes licensed for a total capacity of 9,061 spaces. Of the spaces, 2,293 are reported by contractors to be unavailable for placements. In addition, 1,099 spaces in available foster homes were unused spaces. This occurs when a match between the available spaces and children’s needs was not possible.

Licensed foster homes include family foster homes, professional family foster homes, respite foster homes, receiving foster homes, and developmentally disabled homes with DCS children placed in them. Foster home licenses specify the age range, gender and maximum number of children that can be placed in a home. Foster parents, in consultation with the licensing worker, decide the type of physical, behavioral, and psychological needs of children they can effectively parent based upon their own skill level, experiences, and desires.

During the current reporting period, 756 new homes were licensed to provide foster care and 822 homes left the system. This compares to 1,050 new homes being licensed and 787 homes leaving the system during the prior reporting period. The following chart gives the reasons for foster home closures for the current reporting period.

**CHART 33
REASON FOR FOSTER HOME CLOSURE FOR THE PERIOD OF
APRIL 1, 2014 THROUGH SEPTEMBER 30, 2014**

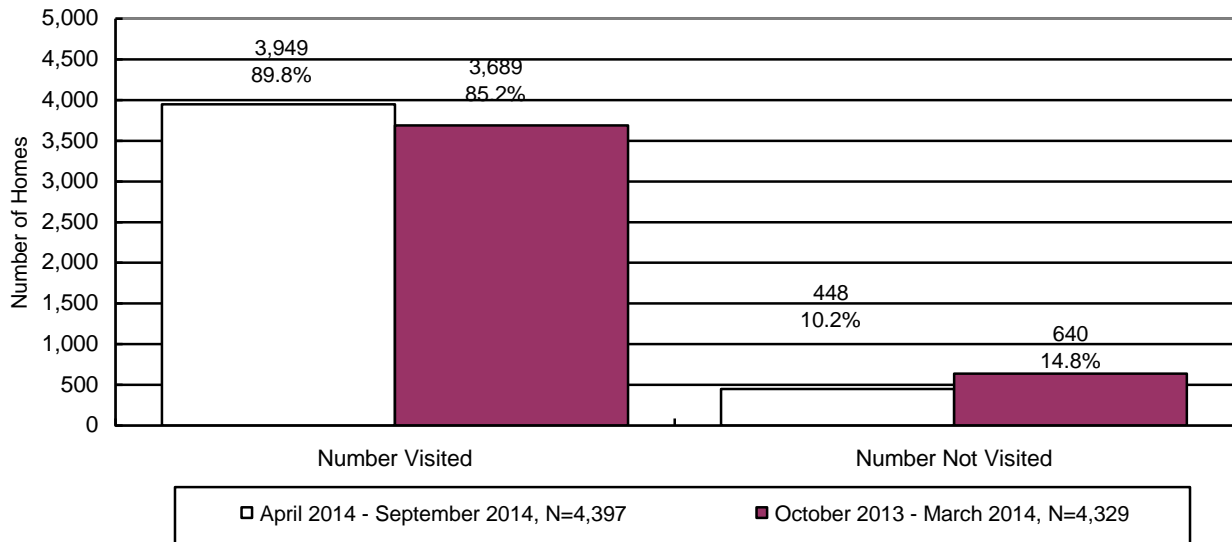


N=822

¹⁰ The number of homes cited in this report differs from the number cited by the Office of Licensing, Certification & Regulation (OLCR) due to the fact that the DCS utilizes both foster homes managed through HRSS contracts as well as homes that are licensed for developmental disabilities, licensed by the tribes, etc.

Chart 34 displays the number of foster homes that received the required visitation in the current and prior reporting periods. The Department believes that more foster homes received the required visitation than is indicated in the chart below. The under-reporting of foster home visitation is attributable to the lack of automation being used in reporting the foster home visitation process. The Department recognizes this as a problem and is working to correct this issue.

CHART 34
THE NUMBER AND PERCENTAGE OF FOSTER HOMES WHO RECEIVED THE REQUIRED VISITATION*



*Required visitations to foster homes, for license monitoring purposes, are performed by licensing case managers.

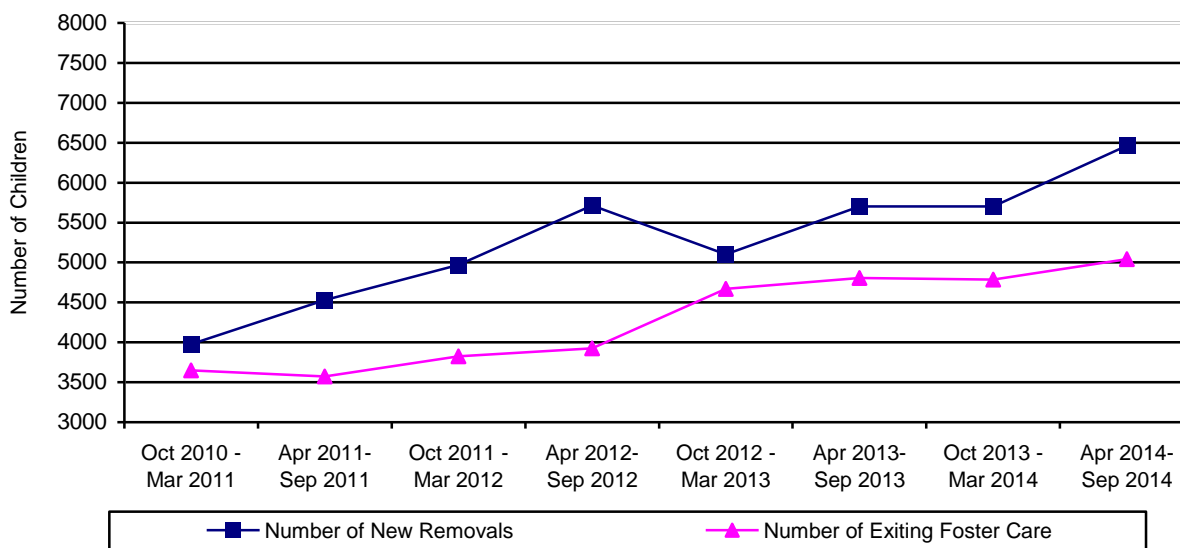
CHILDREN EXITING OUT-OF-HOME CARE

Table 35 below shows the history of the number of children who left the custody of the Department.

**TABLE 35
CHILDREN EXITING OUT-OF-HOME CARE BY PERIOD**

REPORTING PERIOD	NUMBER OF CHILDREN DISCHARGED	% CHANGE OVER PRIOR PERIOD
OCTOBER 2010 – MARCH 2011	3,649	+2.5%
APRIL 2011 – SEPTEMBER 2011	3,574	-2.1%
OCTOBER 2011 – MARCH 2012	3,826	+7.1%
APRIL 2012 – SEPTEMBER 2012	3,923	+2.5%
OCTOBER 2012 – MARCH 2013	4,668	+19.0%
APRIL 2013 – SEPTEMBER 2013	4,805	+2.9%
OCTOBER 2013 – MARCH 2014	4,786	-0.4%
APRIL 2014 – SEPTEMBER 2014	5,042	+5.3%

**CHART 35
CHILDREN ENTERING AND EXITING OUT-OF-HOME CARE BY REPORTING PERIOD**



The following nine tables depict the children who exited out-of-home care by reason. The tables display the following information: reasons the child left custody, their age, their ethnicity, the number of placements each child had, and the length of time in out-of-home care.

TABLE 36
TOTAL NUMBER OF CHILDREN EXITING DCS CUSTODY FOR THE END OF THE
REPORTING PERIOD ENDING ON SEPTEMBER 30, 2014

By Age	Number	Percentage
Under 1	239	4.7%
Ages 1 to 5	1,871	37.1%
Ages 6 to 8	836	16.6%
Ages 9 to 12	824	16.3%
Ages 13 to 17	901	17.9%
18 and Over	371	7.4%
Total	5,042	100.0%
Ethnicity	Number	Percentage
Caucasian	1,850	36.8%
Hispanic	1,832	36.3%
African American	673	13.3%
American Indian	384	7.6%
Asian	42	0.8%
Other	261	5.2%
Total	5,042	100.0%
By Number of Placements	Number	Percentage
One	2,838	56.3%
Two	1,087	21.6%
Three	515	10.2%
Four	251	5.0%
Five	122	2.4%
More than Five	229	4.5%
Total	5,042	100.0%
By Length of Time in Care	Number	Percentage
Less than 30 Days	865	17.2%
31 Days to 12 Months	1,638	32.5%
13 to 24 Months	1,424	28.2%
More than 24 Months	1,115	22.1%
Total	5,042	100.0%

	Average	Median
By Age	8.4	7.4
By Number of Placements	2.0	1.0
By Months of Time in Care	15.5	13.1

**TABLE 37
NUMBER AND PERCENTAGE OF CHILDREN EXITING DCS CUSTODY
FOR REASON OF "REUNIFICATION WITH PARENTS OR PRIMARY CARETAKER" FOR
THE REPORTING PERIOD ENDING SEPTEMBER 30, 2014**

By Age	Number	Percentage
Under 1	188	6.9%
Ages 1 to 5	958	35.1%
Ages 6 to 8	486	17.9%
Ages 9 to 12	492	18.1%
Ages 13 to 17	593	21.8%
18 and Over	5	0.2%
Total	2,722	100.0%
Ethnicity	Number	Percentage
Caucasian	989	36.3%
Hispanic	939	34.5%
African American	393	14.4%
American Indian	193	7.1%
Asian	29	1.1%
Other	179	6.6%
Total	2,722	100.0%
By Number of Placements	Number	Percentage
One	1,761	64.8%
Two	549	20.2%
Three	240	8.8%
Four	99	3.6%
Five	39	1.4%
More than Five	34	1.2%
Total	2,722	100.0%
By Length of Time in Care	Number	Percentage
Less than 30 Days	782	28.7%
31 Days to 12 Months	1,271	46.7%
13 to 24 Months	519	19.1%
More than 24 Months	150	5.5%
Total	2,722	100.0%

	Average	Median
By Age	8.0	7.3
By Number of Placements	1.6	1.0
By Months of Time in Care	8.2	6.2

TABLE 38
NUMBER AND PERCENTAGE OF CHILDREN EXITING DCS CUSTODY
FOR REASON OF “LIVING WITH OTHER RELATIVES” FOR THE REPORTING PERIOD
ENDING SEPTEMBER 30, 2014

By Age	Number	Percentage
Under 1	0	0.0%
Ages 1 to 5	6	26.1%
Ages 6 to 8	2	8.7%
Ages 9 to 12	6	26.1%
Ages 13 to 17	9	39.1%
18 and Over	0	0.0%
Total	23	100.0%
Ethnicity	Number	Percentage
Caucasian	7	30.5%
Hispanic	9	39.1%
African American	5	21.7%
American Indian	0	0.0%
Asian	0	0.0%
Other	2	8.7%
Total	23	100.0%
By Number of Placements	Number	Percentage
One	20	87.0%
Two	0	0.0%
Three	2	8.7%
Four	1	4.3%
Five	0	0.0%
More than Five	0	0.0%
Total	23	100.0%
By Length of Time in Care	Number	Percentage
Less than 30 Days	13	56.6%
31 Days to 12 Months	9	39.1%
13 to 24 Months	1	4.3%
More than 24 Months	0	0.0%
Total	23	100.0%

	Average	Median
By Age	10.7	12.0
By Number of Placements	1.3	1.0
By Months of Time in Care	2.9	0.2

**TABLE 39
NUMBER AND PERCENTAGE OF CHILDREN EXITING DCS
CUSTODY FOR REASON OF "ADOPTION" FOR THE REPORTING PERIOD
ENDING SEPTEMBER 30, 2014**

By Age	Number	Percentage
Under 1	35	2.3%
Ages 1 to 5	839	54.1%
Ages 6 to 8	300	19.3%
Ages 9 to 12	238	15.3%
Ages 13 to 17	137	8.8%
18 and Over	3	0.2%
Total	1,552	100.0%
Ethnicity	Number	Percentage
Caucasian	606	39.0%
Hispanic	611	39.5%
African American	185	11.9%
American Indian	104	6.7%
Asian	8	0.5%
Other	38	2.4%
Total	1,552	100.0%
By Number of Placements	Number	Percentage
One	746	48.0%
Two	400	25.8%
Three	208	13.4%
Four	92	5.9%
Five	46	3.0%
More than Five	60	3.9%
Total	1,552	100.0%
By Length of Time in Care	Number	Percentage
Less than 30 Days	0	0.0%
31 Days to 12 Months	129	8.3%
13 to 24 Months	711	45.8%
More than 24 Months	712	45.9%
Total	1,552	100.0%

	Average	Median
By Age	6.1	5.1
By Number of Placements	2.1	2.0
By Months of Time in Care	25.1	23.2

**TABLE 40
NUMBER AND PERCENTAGE OF CHILDREN EXITING DCS CUSTODY
FOR REASON OF “GUARDIANSHIP” FOR THE REPORTING PERIOD
ENDING SEPTEMBER 30, 2014**

By Age	Number	Percentage
Under 1	6	2.1%
Ages 1 to 5	45	16.1%
Ages 6 to 8	33	11.8%
Ages 9 to 12	75	26.8%
Ages 13 to 17	121	43.2%
18 and Over	0	0.0%
Total	280	100.0%
Ethnicity	Number	Percentage
Caucasian	79	28.2%
Hispanic	127	45.3%
African American	21	7.5%
American Indian	31	11.1%
Asian	1	0.4%
Other	21	7.5%
Total	280	100.0%
By Number of Placements	Number	Percentage
One	170	60.8%
Two	62	22.1%
Three	20	7.1%
Four	12	4.3%
Five	6	2.1%
More than Five	10	3.6%
Total	280	100.0%
By Length of Time in Care	Number	Percentage
Less than 30 Days	26	9.3%
31 Days to 12 Months	113	40.4%
13 to 24 Months	95	33.9%
More than 24 Months	46	16.4%
Total	280	100.0%

	Average	Median
By Age	11.4	11.8
By Number of Placements	2.0	1.0
By Months of Time in Care	14.5	13.1

**TABLE 41
NUMBER AND PERCENTAGE OF CHILDREN EXITING DCS CUSTODY
FOR REASONS OF "REACHING AGE OF MAJORITY" FOR THE REPORTING PERIOD
ENDING SEPTEMBER 30, 2014**

By Age	Number	Percentage
Under 1	0	0.0%
Ages 1 to 5	0	0.0%
Ages 6 to 8	0	0.0%
Ages 9 to 12	0	0.0%
Ages 13 to 17	3	0.9%
18 and Over	349	99.1%
Total	352	100.0%
Ethnicity	Number	Percentage
Caucasian	138	39.2%
Hispanic	117	33.2%
African American	59	16.8%
American Indian	29	8.2%
Asian	3	0.9%
Other	6	1.7%
Total	352	100.0%
By Number of Placements	Number	Percentage
One	75	21.3%
Two	50	14.2%
Three	37	10.5%
Four	44	12.5%
Five	25	7.1%
More than Five	121	34.4%
Total	352	100.0%
By Length of Time in Care	Number	Percentage
Less than 30 Days	6	1.7%
31 Days to 12 Months	74	21.0%
13 to 24 Months	76	21.6%
More than 24 Months	196	55.7%
Total	352	100.0%

	Average	Median
By Age	18.7	18.0
By Number of Placements	5.0	4.0
By Months of Time in Care	33.3	28.5

**TABLE 42
NUMBER AND PERCENTAGE OF CHILDREN EXITING DCS CUSTODY
FOR REASON OF “TRANSFER TO ANOTHER AGENCY” FOR THE REPORTING PERIOD
ENDING SEPTEMBER 30, 2014**

By Age	Number	Percentage
Under 1	7	10.1%
Ages 1 to 5	20	29.0%
Ages 6 to 8	14	20.4%
Ages 9 to 12	12	17.4%
Ages 13 to 17	15	21.7%
18 and Over	1	1.4%
Total	69	100.0%
Ethnicity	Number	Percentage
Caucasian	15	21.7%
Hispanic	9	13.1%
African American	6	8.7%
American Indian	27	39.1%
Asian	1	1.4%
Other	11	16.0%
Total	69	100.0%
By Number of Placements	Number	Percentage
One	40	58.1%
Two	20	29.0%
Three	3	4.3%
Four	1	1.4%
Five	4	5.8%
More than Five	1	1.4%
Total	69	100.0%
By Length of Time in Care	Number	Percentage
Less than 30 Days	26	37.8%
31 Days to 12 Months	27	39.1%
13 to 24 Months	13	18.8%
More than 24 Months	3	4.3%
Total	69	100.0%

	Average	Median
By Age	8.1	7.2
By Number of Placements	1.7	1.0
By Months of Time in Care	6.3	2.3

**TABLE 43
NUMBER AND PERCENTAGE OF CHILDREN EXITING DCS CUSTODY
FOR REASON OF “RUNAWAY” FOR THE REPORTING PERIOD
ENDING SEPTEMBER 30, 2014**

By Age	Number	Percentage
Under 1	1	2.5%
Ages 1 to 5	2	5.0%
Ages 6 to 8	1	2.5%
Ages 9 to 12	1	2.5%
Ages 13 to 17	23	57.5%
18 and Over	12	30.0%
Total	40	100.0%
Ethnicity	Number	Percentage
Caucasian	15	37.5%
Hispanic	19	47.5%
African American	4	10.0%
American Indian	0	0.0%
Asian	0	0.0%
Other	2	5.0%
Total	40	100.0%
By Number of Placements	Number	Percentage
One	22	55.0%
Two	6	15.0%
Three	5	12.5%
Four	2	5.0%
Five	2	5.0%
More than Five	3	7.5%
Total	40	100.0%
By Length of Time in Care	Number	Percentage
Less than 30 Days	10	25.0%
31 Days to 12 Months	14	35.0%
13 to 24 Months	8	20.0%
More than 24 Months	8	20.0%
Total	40	100.0%

	Average	Median
By Age	15.8	17.2
By Number of Placements	2.6	1.0
By Months of Time in Care	16.2	8.8

**TABLE 44
NUMBER AND PERCENTAGE OF CHILDREN EXITING DCS CUSTODY
FOR REASON OF "DEATH OF CHILD" FOR THE REPORTING PERIOD ENDING
SEPTEMBER 30, 2014**

By Age	Number	Percentage
Under 1	2	50.0%
Ages 1 to 5	1	25.0%
Ages 6 to 8	0	0.0%
Ages 9 to 12	0	0.0%
Ages 13 to 17	0	0.0%
18 and Over	1	25.0%
Total	4	100.0%
Ethnicity	Number	Percentage
Caucasian	1	25.0%
Hispanic	1	25.0%
African American	0	0.0%
American Indian	0	0.0%
Asian	0	0.0%
Other	2	50.0%
Total	4	100.0%
By Number of Placements	Number	Percentage
One	4	100.0%
Two	0	0.0%
Three	0	0.0%
Four	0	0.0%
Five	0	0.0%
More than Five	0	0.0%
Total	4	100.0%
By Length of Time in Care	Number	Percentage
Less than 30 Days	2	50.0%
31 Days to 12 Months	1	25.0%
13 to 24 Months	1	25.0%
More than 24 Months	0	0.0%
Total	4	100.0%

	Average	Median
By Age	5.9	2.8
By Number of Placements	1.0	1.0
By Months of Time in Care	6.4	2.9

TABLE 45
CHILDREN EXITING CARE FOR REASON OF DEATH BY CAUSE OF DEATH,
PLACEMENT TYPE AT TIME OF DEATH, AND COUNTY

COUNTY	CAUSE OF DEATH	TYPE OF PLACEMENT AT TIME OF DEATH
Apache	Suicide	Unlicensed Relative Foster Care
Maricopa	Stomach Cancer	Unlicensed Relative Foster Care
Maricopa	Not Determined at the time of this report	Licensed Relative Foster Care
Pima	Accidental Asphyxiation	Unlicensed Relative Foster Care

TABLE 46
NUMBER OF CHILDREN IN AN OPEN CASE WHO DIED AS A RESULT OF ALLEGED
ABUSE AS CATEGORIZED BY THE CUSTODIAL RELATIONSHIP AND COUNTY FOR THE
PERIOD APRIL 1, 2014 THROUGH SEPTEMBER 30, 2014

COUNTY	BIOLOGICAL PARENT(S)	OTHER FAMILY MEMBER	ADOPTIVE PARENT(S)	FOSTER CARE PARENT(S)	OTHER OUT-OF-HOME CARE PROVIDER	TOTAL	% OF TOTAL
APACHE	0	0	0	0	0	0	0.0%
COCHISE	0	0	0	0	0	0	0.0%
COCONINO	0	0	0	0	0	0	0.0%
GILA	0	0	0	0	0	0	0.0%
GRAHAM	0	0	0	0	0	0	0.0%
GREENLEE	0	0	0	0	0	0	0.0%
LA PAZ	0	0	0	0	0	0	0.0%
MARICOPA	3	1	0	0	0	4	50.0%
MOHAVE	0	0	0	0	0	0	0.0%
NAVAJO	0	0	0	0	0	0	0.0%
PIMA	2	0	0	0	0	2	25.0%
PINAL	1	0	0	0	0	1	12.5%
SANTA CRUZ	0	0	0	0	0	0	0.0%
YAVAPAI	0	0	0	0	0	0	0.0%
YUMA	1	0	0	0	0	1	12.5%
STATEWIDE	7	1	0	0	0	8	100.0%
% OF TOTAL	87.5%	12.5%	0.0%	0.0%	0.0%	100.0%	

The number of child maltreatment deaths presented in the Semi-Annual Report is not comparable to child maltreatment deaths reported on the website by the Arizona Department of Economic Security (ADES).

- DCS posts information in accordance with A.R.S. § 8-807 on child fatalities due to abuse or neglect by the child's parent, custodian or caregiver at: www.azdes.gov/cpsinfo.
- This information is posted when the information comes to DCS's attention and a final determination of the fatality due to abuse or neglect has been made by either a substantiated finding or specific criminal charges filed against a parent, guardian or caregiver for causing the fatality.
- The information that comes to DCS's attention and the determination of the fatality due to abuse or neglect may occur sometime after the actual incident for a number of reasons including a determination by a medical professional, a medical examiner, or a criminal child abuse arrest and charge of the perpetrator.

CHILDREN WITH CASE PLAN GOALS OF ADOPTION

Of the 16,990 children in out-of-home care on September 30, 2014, there were 3,377 or 19.8% had a case plan goal of adoption. Of those, 2,210 have been placed and another 1,167 have not been placed. The age and ethnicity of the children with a case plan goal of adoption is displayed in Chart 36 and Chart 37.

**TABLE 47
NUMBER OF CHILDREN WITH A PETITION FOR TERMINATION OF PARENTAL RIGHTS
BY COUNTY FOR THE PERIOD APRIL 1, 2014 THROUGH SEPTEMBER 30, 2014**

COUNTY	TERMINATION OF RIGHTS GRANTED	TERMINATION OF RIGHTS DENIED	TERMINATION OF RIGHTS GRANTED IN PART/DENIED IN PART	TERMINATION OF RIGHTS WITHDRAWN	TOTAL	% OF TOTAL
APACHE	4	0	0	0	4	0.2%
COCHISE	76	0	0	0	76	2.8%
COCONINO	30	0	0	0	30	1.1%
GILA	53	1	0	0	54	2.0%
GRAHAM	48	0	0	0	48	1.8%
GREENLEE	2	0	0	0	2	0.1%
LA PAZ	0	0	0	0	0	0.0%
MARICOPA	1,467	4	0	3	1,474	53.5%
MOHAVE	70	0	0	0	70	2.6%
NAVAJO	20	0	0	0	20	0.7%
PIMA	707	2	0	2	711	25.8%
PINAL	149	6	0	0	155	5.6%
SANTA CRUZ	9	0	0	0	9	0.3%
YAVAPAI	64	0	0	0	64	2.3%
YUMA	31	1	0	0	32	1.2%
STATEWIDE	2,730	14	0	5	2,749	100.0%
% OF TOTAL	99.3%	0.5%	0.0%	0.2%	100.0%	

The average length of time that a child with a case plan goal of “adoption” has spent in out-of-home care is 2 years 11 days. Information on the number of placements in terms of the average, median, and range for children with a case plan goal of adoption is shown below in Table 48.

**TABLE 48
PLACEMENT INFORMATION FOR CHILDREN WITH A CASE PLAN GOAL OF ADOPTION**

	Placements
Average	2.6
Median	2.0
Range Minimum	1
Range Maximum	35

**CHART 36
THE PLACEMENT AND NUMBER OF CHILDREN WITH A CASE PLAN GOAL OF ADOPTION BY AGE**

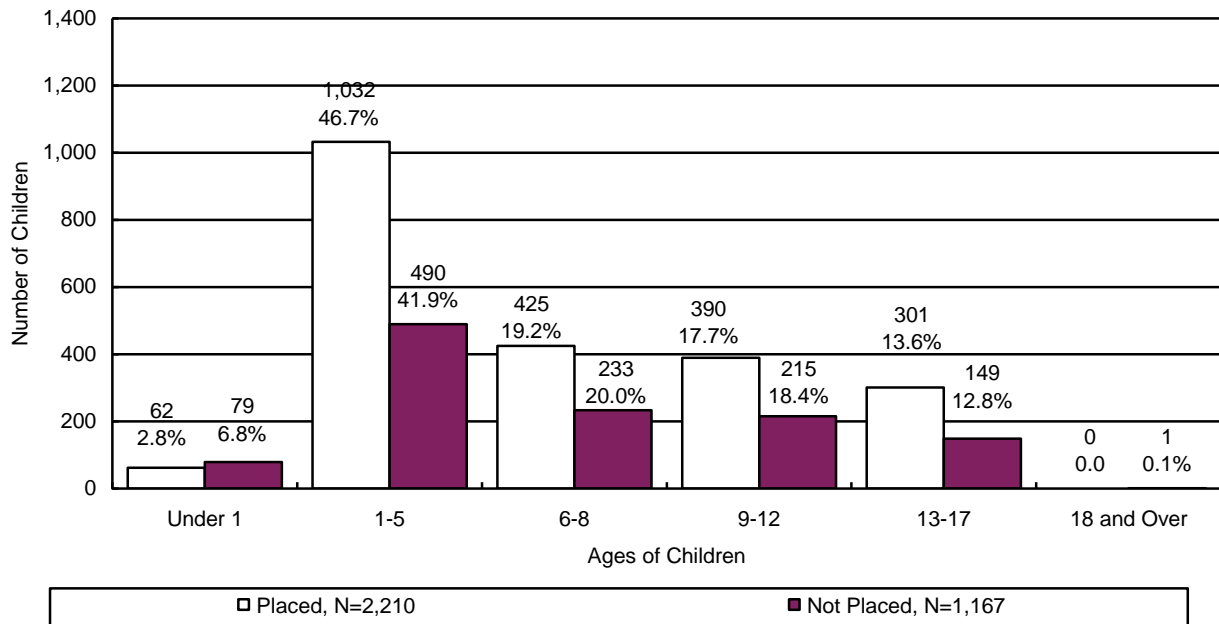


CHART 37
THE PLACEMENT AND NUMBER OF CHILDREN WITH A CASE PLAN GOAL OF ADOPTION BY ETHNICITY

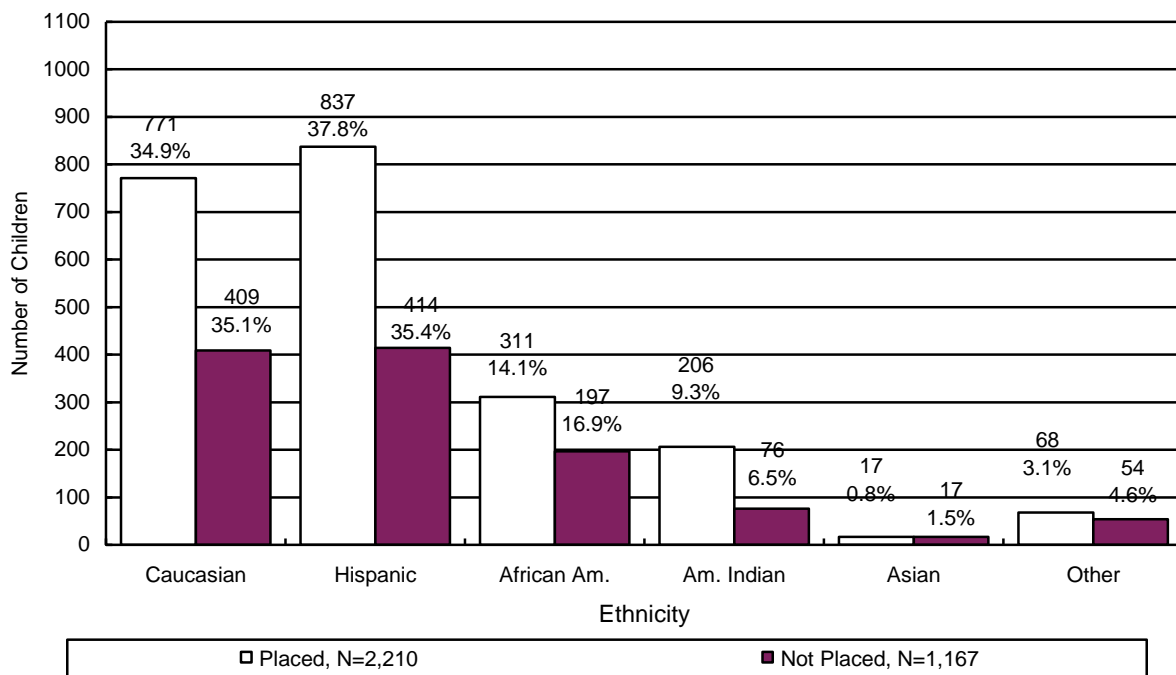
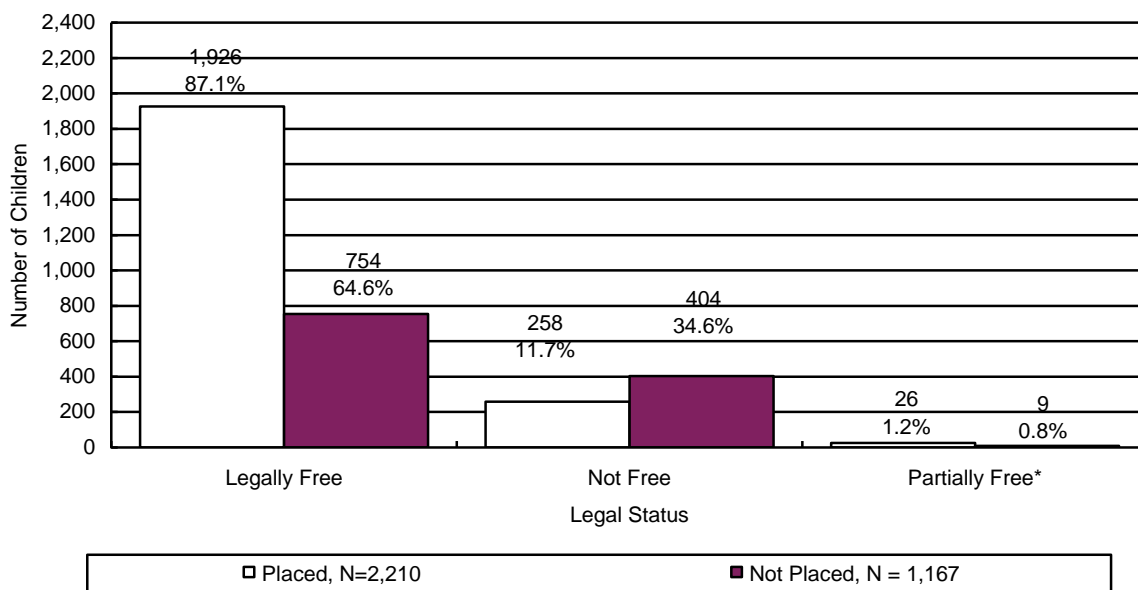
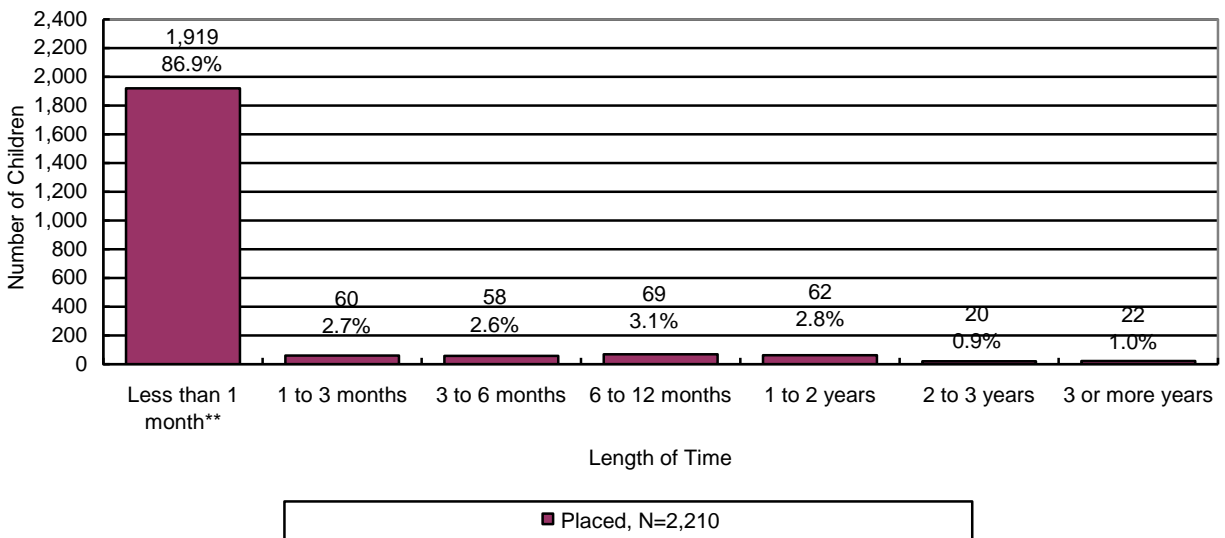


CHART 38
THE PLACEMENT AND NUMBER OF CHILDREN WITH A CASE PLAN GOAL OF ADOPTION BY LEGAL STATUS



*Partially free refers to a situation where only one of the parent’s rights has been severed.

CHART 39
THE NUMBER OF CHILDREN WITH A CASE PLAN GOAL OF ADOPTION BY LENGTH OF TIME FROM CHANGE OF CASE PLAN GOAL OF ADOPTION TO ADOPTIVE PLACEMENT



**Approximately 70 percent of children are adopted by relatives or their foster parents and are already in their prospective adoptive placement at the time the case plan goal changes to adoption.

CHART 40
THE NUMBER OF CHILDREN WITH A CASE PLAN GOAL OF ADOPTION WHO WERE IN AN ADOPTIVE PLACEMENT BY THE MARITAL STATUS OF THE ADOPTIVE PARENT

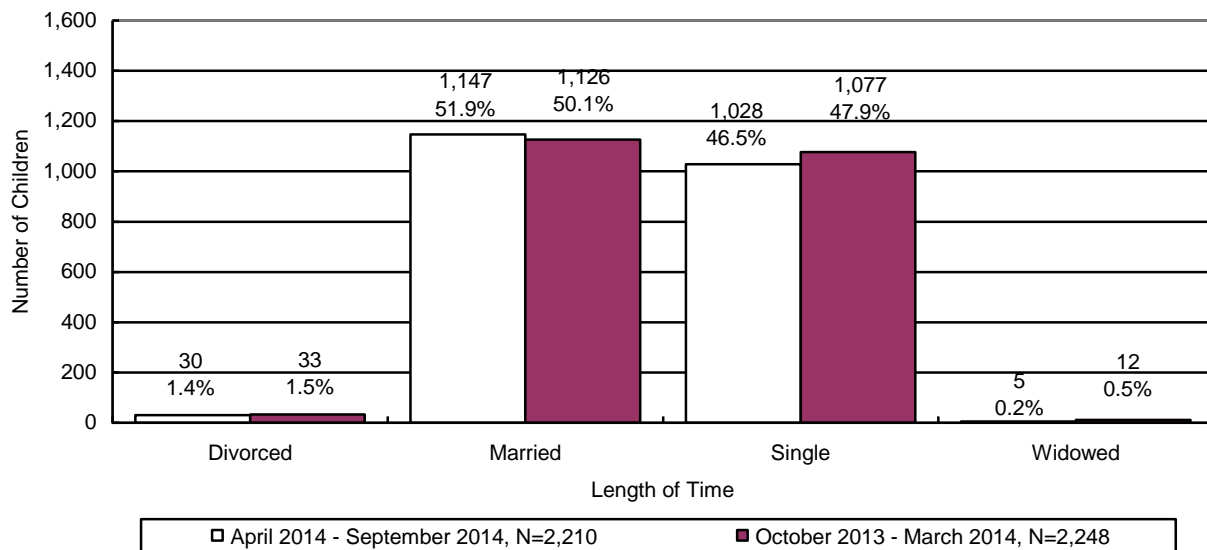
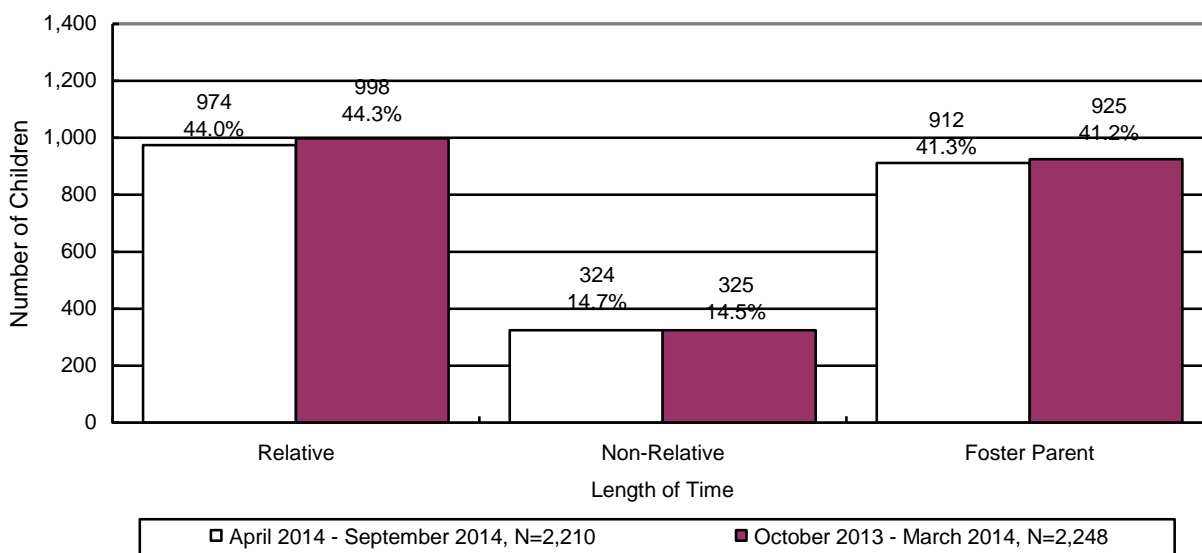


CHART 41
THE NUMBER OF CHILDREN WITH A CASE PLAN GOAL OF ADOPTION WHO WERE IN AN ADOPTIVE PLACEMENT BY THE RELATIONSHIP OF THE ADOPTIVE PARENT



DISRUPTIONS

TABLE 49
THE NUMBER OF CHILDREN WITH A CASE PLAN GOAL OF ADOPTION WHO WERE IN AN ADOPTIVE PLACEMENT AND DISRUPTED BY AGE AND ETHNICITY

By Age	Number	Percentage
Under 1	0	0.0%
Ages 1 – 5	3	37.5%
Ages 6 – 8	1	12.5%
Ages 9 – 12	3	37.5%
Ages 13 – 17	1	12.5%
18 and Over	0	0.0%
Total	8	100.0%
Ethnicity	Number	Percentage
Caucasian	3	37.5%
Hispanic	3	37.5%
African American	2	25.0%
American Indian	0	0.0%
Asian	0	0.0%
Other	0	0.0%
Total	8	100.0%

CHART 42
THE NUMBER OF CHILDREN WITH A CASE PLAN GOAL OF ADOPTION WHO WERE IN AN ADOPTIVE PLACEMENT AND DISRUPTED BY THE MARITAL STATUS OF THE ADOPTIVE PARENT

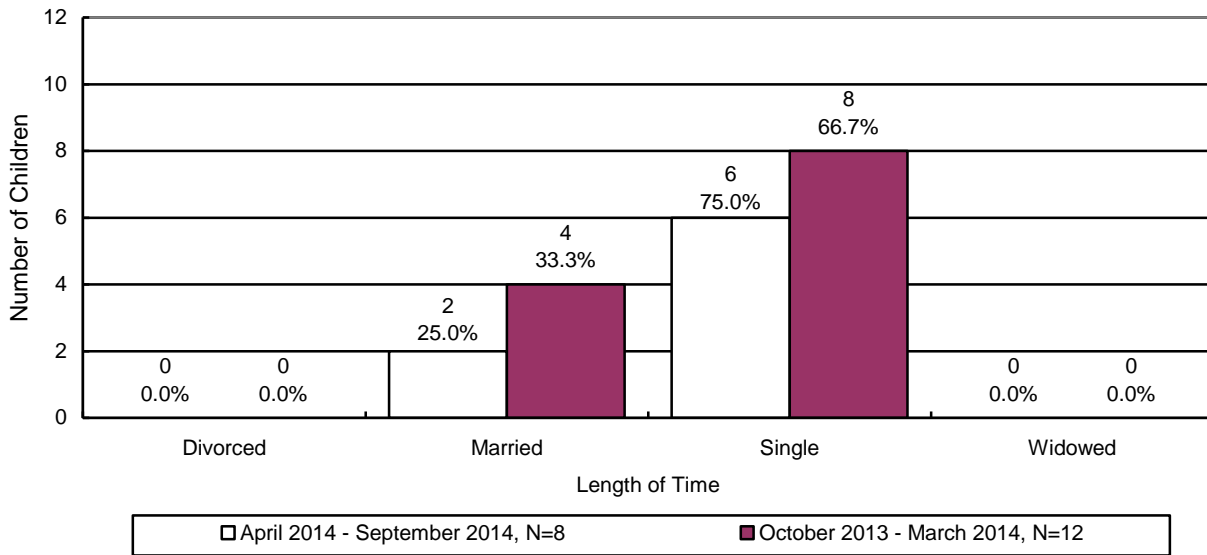
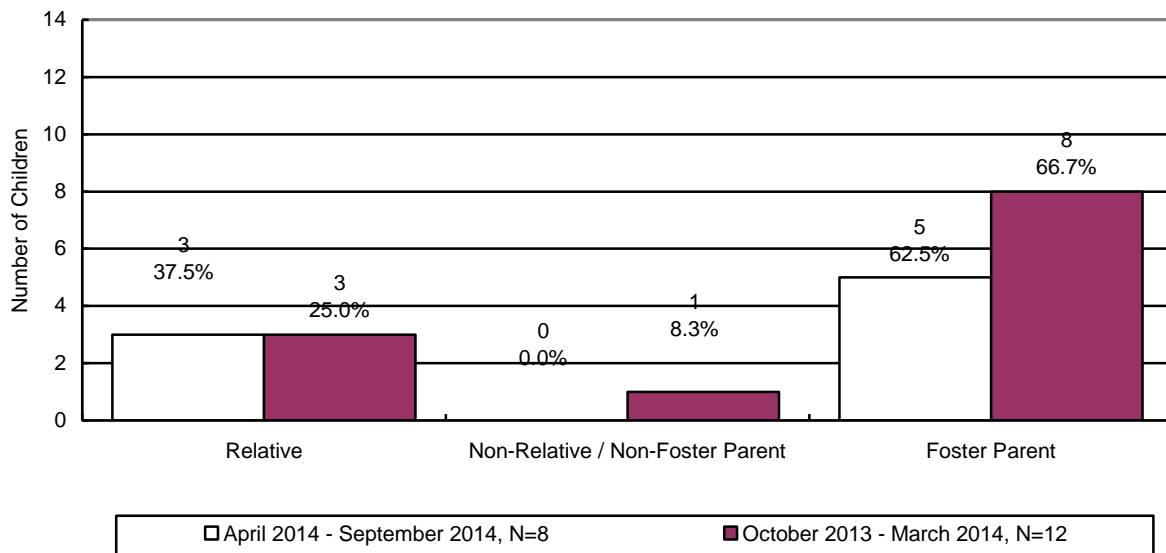
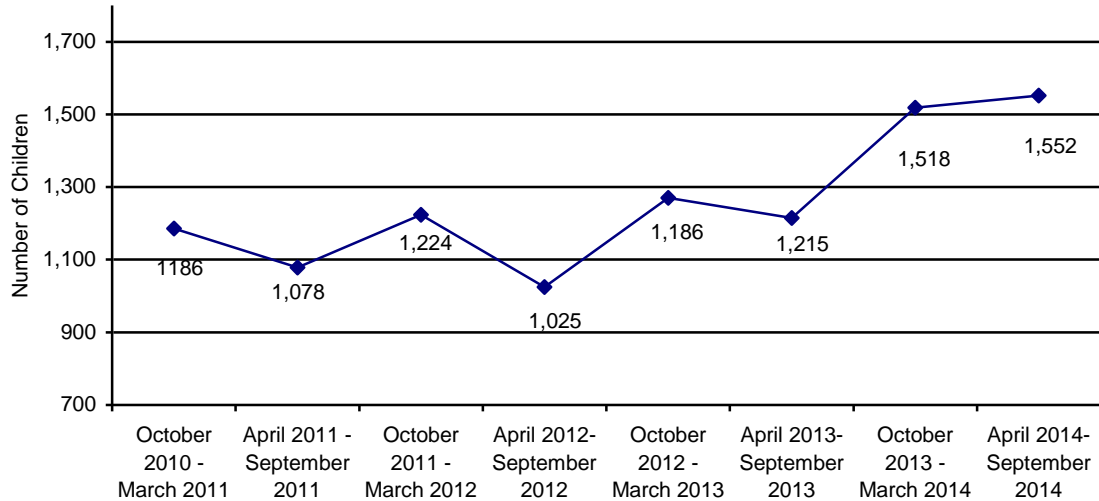


CHART 43
THE NUMBER OF CHILDREN WITH A CASE PLAN GOAL OF ADOPTION WHO WERE IN AN ADOPTIVE PLACEMENT AND DISRUPTED BY THE RELATIONSHIP OF THE ADOPTIVE PARENT



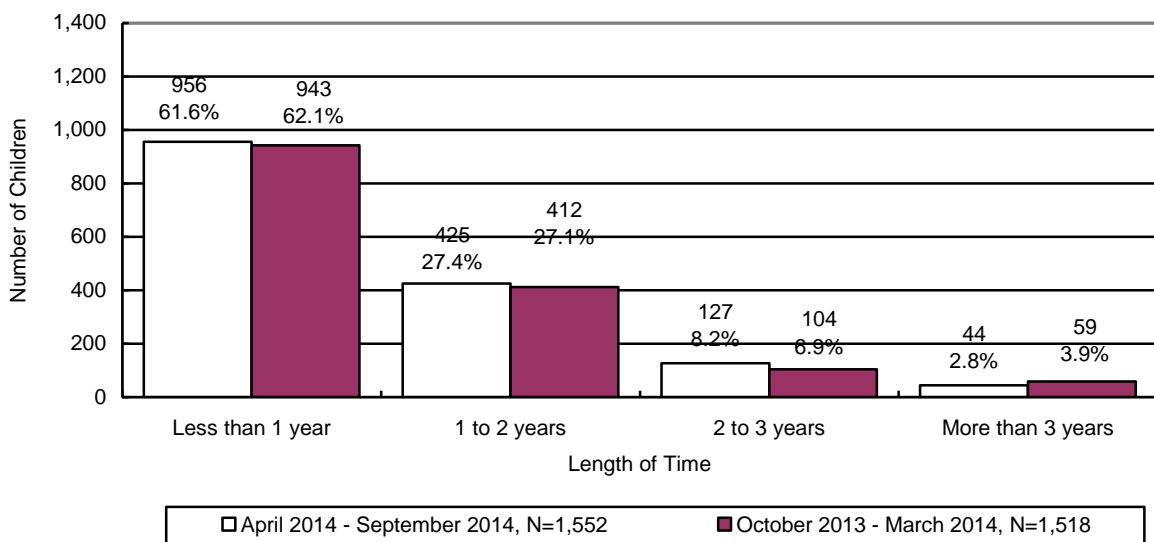
ADOPTIVE SERVICES

**CHART 44
THE NUMBER OF CHILDREN WITH A FINALIZED ADOPTION**



There were 1,552 children with a finalized adoption during the reporting period. Chart 45 displays the number of children with a finalized adoption during the reporting period by the average length of time in out-of-home placement before adoptive placement.

**CHART 45
THE NUMBER AND PERCENTAGE OF CHILDREN WITH A FINALIZED ADOPTION BY AVERAGE LENGTH OF TIME IN OUT-OF-HOME PLACEMENT BEFORE ADOPTIVE PLACEMENT**



The chart below displays the number of children with a finalized adoption by average length of time in adoptive placement before the final order of adoption.

CHART 46
THE NUMBER AND PERCENTAGE OF CHILDREN WITH A FINALIZED ADOPTION BY AVERAGE LENGTH OF TIME IN ADOPTIVE PLACEMENT BEFORE THE FINAL ORDER OF ADOPTION

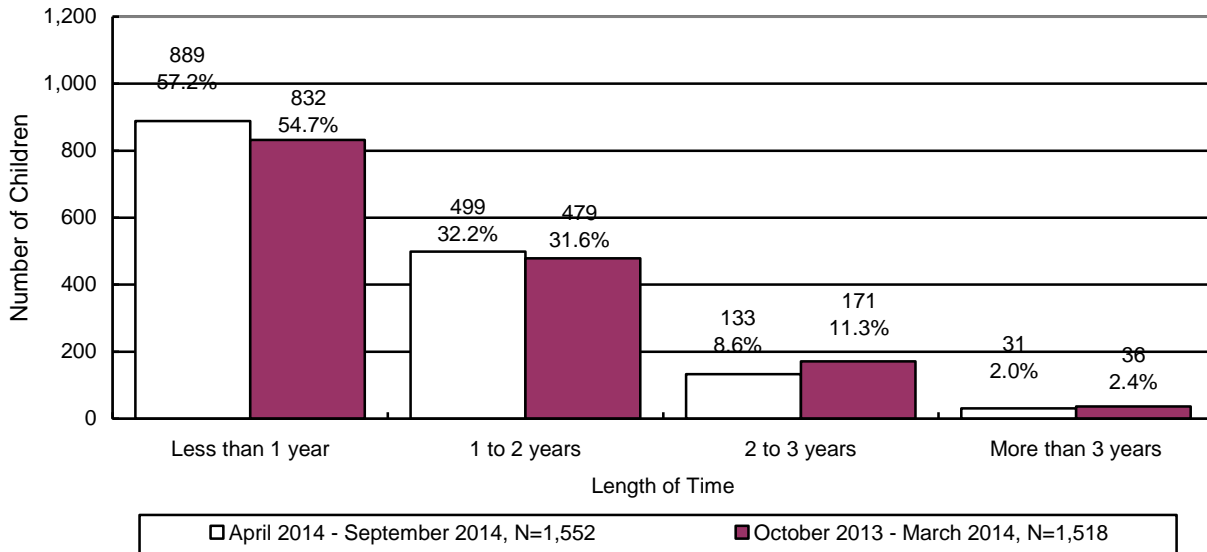


CHART 47
THE NUMBER OF CHILDREN WITH A FINALIZED ADOPTION BY THE MARITAL STATUS OF THE ADOPTIVE PARENT

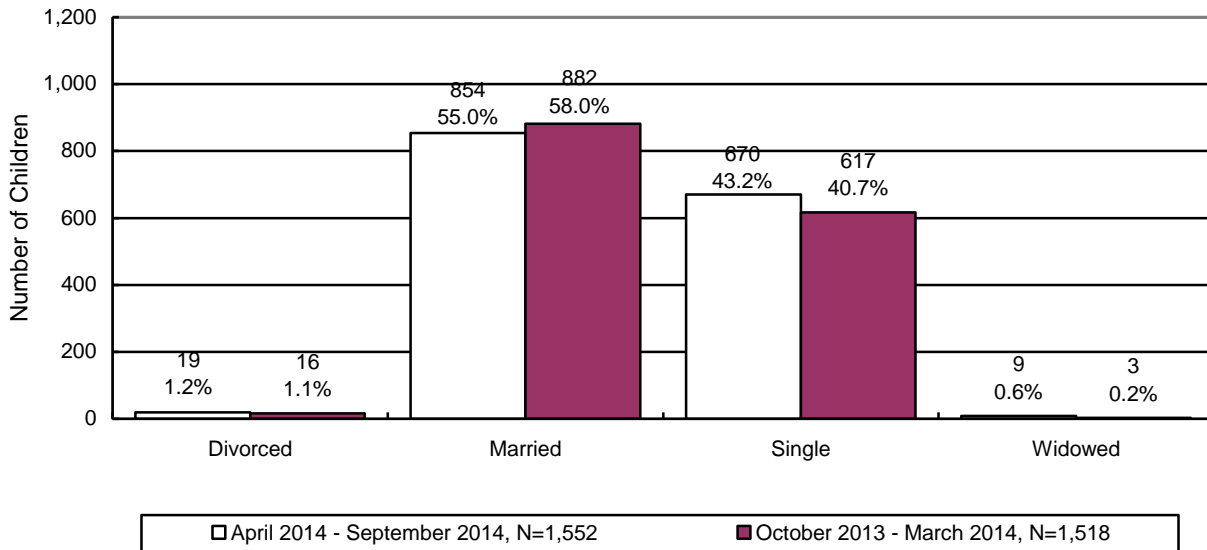


CHART 48
THE NUMBER OF CHILDREN WITH A FINALIZED ADOPTION BY THE RELATIONSHIP
OF THE ADOPTIVE PARENT TO THE CHILD

