



Douglas A. Ducey
Governor

Gregory McKay
Director

June 30, 2016

The Honorable Douglas A. Ducey
Governor of Arizona
1700 West Washington
Phoenix, Arizona 85005

Re: Semi-Annual Child Welfare Reporting Requirements

Dear Governor Ducey:

Pursuant to A.R.S. § 8-526, the Arizona Department of Child Safety (DCS) submits the enclosed semi-annual report on child welfare for the period of October 1, 2016 through March 31, 2016. This report provides information relative to reports of child abuse and neglect, investigations, shelter and receiving home services, foster homes, length of care, and adoptions.

If you have any questions, please contact me at (602) 255-2500.

Sincerely,

A handwritten signature in black ink, appearing to read "G. McKay". The signature is written over a large, empty oval shape.

Gregory McKay
Director

Enclosure

cc: President Andy Biggs, Arizona State Senate
Speaker David M. Gowan Sr., Arizona State House of Representatives
Senator Nancy Barto, Chairman, Senate Health and Human Services Committee
Representative John M. Allen, Chairman, House Children and Family Affairs Committee
Secretary of State Michele Reagan
Kirk Adams, Chief of Staff, Office of the Governor
Joan Clark, Director, Arizona State Library, Archives, and Public Records
Lorenzo Romero, Director, Governor's Office of Strategic Planning and Budgeting
Laura Johnson, Budget Manager, Governor's Office of Strategic Planning and Budgeting
Christina Corieri, Health and Human Services Policy Advisor, Office of the Governor
John Johnson, Division Chief Council, Child and Family Protection Division, Office of the
Attorney General
Emily Mercado, Analyst, Senate Health and Human Services Committee
Ingrid Garvey, Analyst, House Children and Family Affairs Committee
Wendy Baldo, Chief of Staff, Senate Majority Caucus
Melissa Taylor, Senior Policy and Operations Advisor, Senate Majority Caucus
Patsy Osmon, Policy Advisor, Senate Democratic Caucus
Leslie Sorensen, Deputy Chief of Staff/Staff Attorney, House Majority Caucus
Ryan Sullivan, Policy Advisor, House Majority Caucus
Cynthia Aragon, Policy Advisor, House Democratic Caucus
Representative Kate Brophy McGee, Arizona State House of Representatives

CHILD WELFARE REPORTING REQUIREMENTS

SEMI-ANNUAL REPORT

FOR THE PERIOD OF

OCTOBER 1, 2015 THROUGH MARCH 31, 2016



ARIZONA REVISED STATUTES

[LAWS 2015, CHAPTER 257]

ARIZONA DEPARTMENT OF CHILD SAFETY

CHILD WELFARE REPORTING REQUIREMENTS

Arizona Revised Statute § 8-526 requires the Arizona Department of Child Safety (DCS) to compile information and produce a semi-annual report for the periods ending on March 31st and September 30th of each year regarding Child Welfare Services. This report is for the semi-annual reporting period beginning on October 1, 2015 and ending March 31, 2016.

TABLE OF CONTENTS

(Reporting period: October 1, 2015 through March 31, 2016)

	<u>Page</u>
EXECUTIVE SUMMARY	4
SEMI-ANNUAL COMPARISONS	8
REPORTS OF CHILD ABUSE AND NEGLECT	
Reports by reporting period and type of child maltreatment – statewide data.....	9
Sample communications to hotline, not meeting definition of a report.....	11
Reports received by priority - statewide data.....	12
Number of reports received by priority – county specific data.....	13
Number of reports received by maltreatment – statewide data.....	14
Number of reports received by maltreatment – county specific data.....	14-15
ASSIGNMENT OF INVESTIGATIONS	
Reports assigned for investigation by priority – statewide data.....	16
Reports assigned for investigation by priority – county specific data.....	17
Reports assigned for investigation by type of maltreatment – statewide data.....	18
Reports assigned for investigation by type of maltreatment – county specific data.....	18-19
INVESTIGATIONS OF CHILD ABUSE AND NEGLECT	
Reports not responded to by priority – county specific data.....	20
Investigations by priority – investigation open – statewide data.....	22
Investigations by priority – investigation open – county specific data.....	22-23
Investigations by type of child maltreatment – investigation open – statewide data.....	23
Investigations by type of child maltreatment – investigation open – county specific data.....	24
Reports where removal occurred – county specific data.....	25-26
COMPLETED INVESTIGATIONS	
Substantiation rate by reporting period.....	27
Investigations by priority – proposed substantiated reports – statewide data.....	28
Investigations by priority – proposed substantiated reports – county specific data.....	28-29
Investigations by type of child maltreatment – proposed substantiated reports – statewide data.....	29
Investigations by type of child maltreatment – proposed substantiated reports – county specific data.....	30
Investigations by priority – substantiated reports – statewide data.....	31

TABLE OF CONTENTS (continued)
 (Reporting period: October 1, 2015 through March 31, 2016)

	<u>Page</u>
Investigations by priority – substantiated reports county specific data.....	31-32
Investigations by type of child maltreatment – substantiated reports – statewide data.....	32
Investigations by type of child maltreatment – substantiated reports – county specific data.....	33
Investigations by priority – unsubstantiated reports – statewide data.....	34
Investigations by priority – unsubstantiated reports – county specific data.....	34-35
Investigations by type of child maltreatment – unsubstantiated reports – statewide data..	35
Investigations by type of child maltreatment – unsubstantiated reports – county specific data.....	36
SAFE HAVEN INFANTS	
Number of Safe Haven infants delivered during reporting period.....	37
CHILDREN ENTERING OUT-OF-HOME CARE	
Total children entering out-of-home care.....	37
New entries by county – children under 18 years voluntary placement.....	38
New entries by county.....	39-40
New entries – statewide data.....	40
CHILDREN IN OUT-OF-HOME CARE	
Children in out-of-home care by reporting period.....	41
All children in care by age and ethnicity.....	42
All children in care by case plan goal and placement type.....	43
All children in care by placement type and age.....	44
Children in shelter or receiving homes for more than 21 days.....	45
Children in out-of-home care by length of time in care.....	45
Children in out-of-home care by legal status.....	46
Children receiving and not receiving required visitation.....	47
FOSTER HOME LICENSING, CLOSURES, AND VISITATIONS	
Foster homes licensed.....	48
Child bed spaces available.....	48
Foster homes closed and reason for closure	48
Number of foster homes receiving the required visitation.....	49
CHILDREN EXITING OUT-OF-HOME CARE	
Semi-Annual comparisons of total number exiting care – for all reasons.....	50
Total number exiting care.....	50-51
Total number exiting care – for reason of reunification with parents.....	52
Total number exiting care – for reason of living with other relatives.....	53
Total number exiting care – for reason of adoption.....	54
Total number exiting care – for reason of guardianship.....	55

TABLE OF CONTENTS (continued)
 (Reporting period: October 1, 2015 through March 31, 2016)

	<i>Page</i>
Total number exiting care – for reason of reaching age of majority.....	56
Total number exiting care – for reason of transfer to another agency.....	57
Total number exiting care – for reason of runaway.....	58
Total number exiting care – for reason of death of child.....	59
Total number exiting care – by cause of death.....	60
Total number exiting for reason of death of child – with alleged abuse.....	60
CHILDREN WITH CASE PLAN GOALS OF ADOPTION	
The placement and number of children with case plan goals of adoption by age.....	61
The placement and number of children with case plan goals of adoption by ethnicity.....	62
Number of children with a petition for termination of parental rights.....	62
The placement and number of children with case plan goals of adoption by legal status..	63
Number of children – length of time from change of case plan goals of adoption to adoptive placement.....	64
Number of children in an adoptive placement by the marital status of the adoptive parent.....	64
Number of children in an adoptive placement by the relationship of the adoptive parent.....	65
DISRUPTIONS	
Number of children with a case plan goal of adoption in an adoptive placement and disrupted by age and ethnicity.....	65
Number of children with a case plan goal of adoption in an adoptive placement and disrupted by the marital status of the adoptive parent.....	66
Number of children with a case plan goal of adoption in an adoptive placement and disrupted by the relationship of the adoptive parent.....	66
ADOPTIVE SERVICES	
Number of children with a finalized adoption.....	67
Number of children with a finalized adoption by average length of time in out-of-home placement before adoptive placement.....	67
Number of children with a finalized adoption by average length of time in adoptive placement before the final order of adoption.....	68
Number of Children with a finalized adoption by the marital status of the adoptive parent.....	68
Number of children with a finalized adoption by the relationship of the adoptive parent.....	69

Executive Summary

The Arizona Department of Child Safety is pleased to publish this semi-annual report for October 2015 through March, 2016 in compliance with A.R.S. § 8-526. This report is intended to provide its readers an opportunity to review the impact of the Department's process improvements in relation to key performance indicators.

In May 2014, the Department of Child Safety was created as a permanent, stand-alone agency with the express mission of safeguarding Arizona's abused and neglected children. The legislation enacted on May 29, 2014 included additional funding for an increase in child safety specialists and case aides.

The data contained within this Semi-Annual Report assists with identifying where continued focus is needed by the Department, stakeholders, policy makers, and advocacy groups. By working collaboratively to address the needs of children and to prevent child abuse, additional targeted resources and strategies that are put in place to improve outcomes for children will be implemented in a more coordinated and timely manner.

Child Abuse Hotline and Investigations

The statewide Child Abuse Hotline received 24,537 calls that met the statutory criteria for a report. Of these, 344 were within the jurisdiction of military or tribal governments and were referred to those jurisdictions. The total number of reports represents a 7.25 percent decrease over the prior reporting period, and a 3.8 percent decrease over the same reporting period last year.

In addition to responding to all reports received in this reporting period, the Department closed more reports (18,711) this reporting period than any other reporting period in the past four years. This achievement is highlighted by the fact the Department achieved a 28.6 percent decrease in total open reports from 31,787 in October 2015 to 22,698 in March 2016. The Department is very pleased with this accomplishment as this will continue to help reduce caseloads for investigators and allow them to emphasize value-added activities involved in the investigation process.

The DCS Strategic Plan was announced in July 2015 and identified several goals with deliverables for the Hotline, Investigations, Ongoing and foster home capacity and availability. To date, the Department has initiated and/or completed several deliverables, including, but not limited to:

- Created a data dashboard to monitor open report volume and categorize reports by risk factors;
- Created a new Hotline screening decision-making tool that clarifies report and prioritization requirements;
- Instituted notification to callers to the Hotline about false reporting penalties;
- Reduced the total number of Inactive Cases from 14,558 in October 2015 to 10,751 in March 2016, a 26% reduction.
- Created a dashboard to track overall investigation case management.
- Expanded the use of Team Decision making meetings for considered removals;

- Sustain the Building Resilient Families program to deliver in-home prevention services in Maricopa County for low risk families who have been the subject of a DCS investigation.
- Implementation and refinement of staff exit interviews;
- Improved case aide ratios;
- Reduce wait list for parent aide services;
- Timely case transfers from investigation to ongoing in select model offices;
- Implemented a field guide that facilitates the collection and documentation of safety and risk assessment information;
- Created and implemented supervision guides for investigation and ongoing cases;
- Completed policy analysis on the investigation/assessment of very low risk families;
- Implemented Multidisciplinary Team (MDT) reviews of fatality/near fatality cases;
- Implementation of a Service Referral Matrix to refine the referral and approval process statewide; and
- Implementation of faith-based prevention services with the introduction of CARE Portal in Pima Region and planning the rollout of the CARE Portal in Maricopa County.

Of the reports subject to substantiation during this reporting period, the preliminary number of reports that were substantiated is 1,658 (7%). An additional 2,171 were proposed for substantiation by child welfare specialists and are currently awaiting the results of the appeals process. Over time, the number of substantiated and proposed substantiated reports associated with this time period will increase as investigation findings are entered into CHildren's Information Library and Data Source (CHILDS).

Children in Out-of-Home Care

The Department remains committed to working with the community to keep children safe and prevent the need for children to be removed from their homes. Notwithstanding this commitment, while the number of children in out-of-home care increased slightly from 18,657 in the prior reporting period to 18,906 in March 2016, the Department is able to report that this reporting period reflects the smallest increase (one percent) in the overall number of children in out-of-home care. Several initiatives referenced above are helping to contribute to this reduction including a reduction in the number of cases in the backlog, efficient case transfers, and cursory reviews of all ongoing cases. Previous reporting periods reflected increases of three to seven percent in the overall number of children in out-of-home placement at the end of each reporting period. During this reporting period, 6,141 children were removed compared to 6,819 removals the prior reporting period. This represents a ten percent reduction in the number of children entering out-of-home placement.

The Department continues to make efforts to place children who have been removed from their home in the most family-like setting possible. As of March 31, 2016, 14,963 children – or approximately 79 percent of all children in out-of-home care – were placed with relatives or licensed foster parents. An additional 26 children were placed with their parents on a trial home visit and 505 youth were residing in independent living settings.

As part of the strategic plan, the Department is striving to improve capacity to place children in family environments and fully meet the needs of children in care. During this reporting period DCS was able to accomplish the following:

- Address barriers to licensing by analyzing denials of Life Safety Inspections and developing an action plan to safely reduce the frequency of denials;
- Increased use of Placement Coordinators to identify available kinship placements upon removal;
- Continue the use of software tools, e.g. Lexis Nexis, to find potential kinship placements;
- Maintain the Fostering Inclusion Respect Support Trust Advisory (FIRST) Commission;

The state requires monthly face-to-face visitation with children in foster care. The current report shows that 89.8 percent of the children in foster care received their visitation during the last month of the reporting period. This is a 5.4 percent improvement over the last reporting period and demonstrates the Department's commitment to children in foster care. There is a strong correlation between caseworker visits with children and positive outcomes for these children, such as achieving permanency and other indicators of child well-being. The Department continues to make efforts to improve our rate of visitation.

Permanency for Children

Arizona is a national leader in the number of finalized adoptions. The Department remains committed to work toward achieving permanency for children placed in out-of-home care as demonstrated by increasing the total number of children achieving permanency through adoption. This reporting period there were 1,727 adoptions compared to 1,576 in the previous reporting period; an increase of ten percent. During this period, the number of finalized adoptions exceeded any prior reporting period.

The Department demonstrated a significant increase in the number of children safely reunified with their families. 3,034 children exited DCS custody to reunify with their parents or primary caretakers this reporting period compared to 2,636 during the same reporting period last year, which is a 15 percent increase.

As part of the Strategic Plan, the Department continues recruitment efforts of foster and adoptive homes. In November 2015, the Department adjusted foster care reimbursement rates for families who are willing and capable of providing a home for youth ages 12 to 18 years old and sibling groups in this age group. Additionally, as noted above, the Department is addressing issues with the licensing process that cause delays for qualified persons to become licensed foster parents. The Department continues conducting process improvement projects to reduce the time from application to licensure.

Efforts to increase the number of licensed foster parents who are able to meet the needs of children requiring out-of-home placement resulted in a 14 percent increase in the number of new homes being licensed during the reporting period compared to the previous reporting period. There were 774 new homes licensed the last reporting period compared to 882 new homes this period. Additionally, the total number of licensed foster homes increased by three percent compared to the previous reporting period. There were 4,551 licensed foster homes during the previous reporting period and 4,681 licensed foster homes this reporting period.

Other areas in which the Department is engaged to improve permanency for children are "targeted permanency reviews" which focus on identifying barriers to achieving permanency and

eliminating those barriers to move children to permanent living situations and out of the care of the Department.

Strategic Goals to Address Challenges

The Department's Strategic Plan represents the leadership's commitment to refocus attention and resources on the safety, permanency, and well-being of children in Arizona. Below are the five strategic goals that address several of the most pressing challenges faced by the Department:

1. Improve objective decision-making at the Hotline and investigations.
2. Improve performance and quality of service through employee retention.
3. Reduce length of stay for children in out-of-home care.
4. Reduce recurrence of maltreatment by improving service delivery.
5. Improve capacity to place children in family environments.

As noted previously, the legislation enacted to create the Department included funding to increase the number of child safety specialists. Hiring these specialists during fiscal year 2015 presented a significant challenge to the Department. However, in March 2016 the Department had filled 90 percent all of its budgeted positions for child safety specialists, including staff at the Hotline.

One of the Department's most significant efforts during this reporting period has been to address the long-standing issue of the 'backlog' or 'inactive' cases which are those cases that had no case notes or service authorizations for 60 days or more. Prior to 2015, efforts to reduce the backlog did not involve a methodical, focused approach. Current efforts ensure that an inactive case receives careful review and meaningful case management activities that address the safety, well-being and permanency needs of the children and families involved in the case. During this reporting period, the Department initiated '*select assistance work teams*' who were assigned to specific field offices to review cases, identify actions required to complete overdue investigations, complete field response activities and complete final quality assurance reviews. Regional action plans to address the backlog of inactive cases include continuing off-line time for case managers to complete actions on open cases while not being assigned new cases and identifying additional resources at the Regional level to support investigation and clinical reviews. Regional leadership established accountability for workload completion through data reporting which is monitored weekly and monthly. As a means of expanding capacity to complete investigations the Department, with grant support from Casey Family Programs, partnered with a qualified local service provider in Maricopa County to support field offices with response activities. Finally, Model Field Offices were established that adhere to a standard process to transfer cases from investigations to ongoing. This occurs quickly after a child's removal so investigators are no longer case managing dependency cases and are free to focus on investigations.

The Department continues to assess processes and program controls to identify ways to address these challenges. Solutions will include partnering with the community and stakeholders to ensure that the safety and wellbeing of children is always paramount. The Department continues to work in partnership with the federal government to meet the federal Child and Family Service Review (CFSR) standards to improve outcomes for the children and families it serves.

Semi-Annual Comparisons

	Apr 2012 through Sep 2012	Oct 2012 through Mar 2013	Apr 2013 through Sep 2013	Oct 2013 through Mar 2014	Apr 2014 through Sep 2014	Oct 2014 through Mar 2015	Apr 2015 through Sep 2015	Oct 2015 through Mar 2016
Number of Reports Received	21,625	22,161	22,032	22,956	25,076	25,508	26,455	24,537
Number of Reports Substantiated ¹	2,809	2,588	2,704	3,190	3,456	3,535	3,836	1,658
Substantiation Rate	14%	13%	12%	14%	14%	14%	15%	7%
Number of Reports Investigated & Closed	9,168	10,923	11,212	11,392	12,038	13,045	15,076	18,771
Number of Reports Responded to	20,413	20,253	20,122	22,162	24,435	25,182	26,022	24,193
Number of new removals	5,716	5,101	5,702	5,701	6,461	5,935	6,819	6,141
Number of new removals with Voluntary under 18	116	97	118	90	189	131	154	107
Number of Children in Out-of-Home Care on the Last Day of Reporting Period	14,111	14,314	15,037	15,751	16,990	17,592	18,657	18,906 ³
Number of Children in Shelter for More than 21 Days	764	792	824	802	868	900	878	974
Number and Percentage of Children Receiving Visitation In the Last Month of Reporting Period	10,404 (73.7%)	12,101 (84.5%)	12,997 (86.4%)	13,818 (87.7%)	14,846 (87.4%)	15,323 (87.1%)	15,746 (84.4%)	16,985 (89.8%)
Number and Percentage of Children not Receiving Visitation	3,707 (26.3%)	2,213 (15.5%)	2,040 (13.6%)	1,933 (12.3%)	2,144 (12.6%)	2,269 (12.9%)	2,911 (15.6%)	1,921 (10.2%)
Number and Percentage of Parents Receiving Visitation	1,017 (51.2%)	1,058 (50.9%)	1,157 (52.4%)	1,344 (53.8%)	1,315 (52.0%)	1,372 (55.7%)	1,576 (50.9%)	2,570 (50.0%)
Number of Licensed Foster Homes ²	3,748	3,516	3,900	4,329	4,397	4,497	4,551	4,681
Number of Foster Home Spaces Available to DCS	7,716	8,579	8,573	9,049	9,061	9,079	9,114	10,337
Number of New Foster Homes	999	722	717	1,050	756	821	774	882
Number of Foster Homes Closed	747	740	715	787	822	785	767	871
Number and Percentage of Foster Homes Receiving Visitation In the Last Qtr. Of Reporting Period	3,095 (82.6%)	3,316 (92.7)	3,491 (89.5%)	3,689 (85.2%)	3,949 (89.8%)	3,881 (86.3%)	3,925 (86.2%)	4,258 (91.0%)
Number and Percentage of Foster Homes not Receiving Visitation	653 (17.4%)	260 (7.3%)	409 (10.5%)	640 (14.8%)	448 (10.2%)	616 (13.7%)	626 (13.8%)	423 (9.0%)
Number of Children Leaving DCS Custody	3,923	4,668	4,805	4,786	5,042	5,063	5,555	5,668
Number of Children With a Case Plan Goal of Adoption	2,719	2,852	3,311	3,417	3,377	3,449	3,878	4,224
Number of Children With a Finalized Adoption	1,025	1,270	1,215	1,518	1,552	1,629	1,576	1,727

¹ Since the appeals process delays the substantiation of reports, revisions to the substantiation rate for the prior reporting period will occur with every semi-annual report produced.

² The number of available foster homes includes homes reported by the Department's Home Recruitment, Study and Supervision contractors along with foster homes utilized for appropriate children in coordination with the Division of Developmental Disabilities.

³ The report run date was May 28, 2016.

Reports of Child Abuse & Neglect

Child abuse and neglect are defined in A.R.S. §8-201 and A.R.S. §13-3623 (A). These definitions provide the major categories in this report.

Between October 1, 2015 through March 31, 2016, there were 24,537 incoming communications to the Child Abuse Hotline that met the criteria for a report of abuse or neglect. Of these, 344 were within the jurisdiction of military or tribal governments and were referred to those jurisdictions. Compared to one year ago, there has been a 3.96% decrease in reports received by the Child Abuse Hotline meeting the criteria of a report of abuse or neglect.

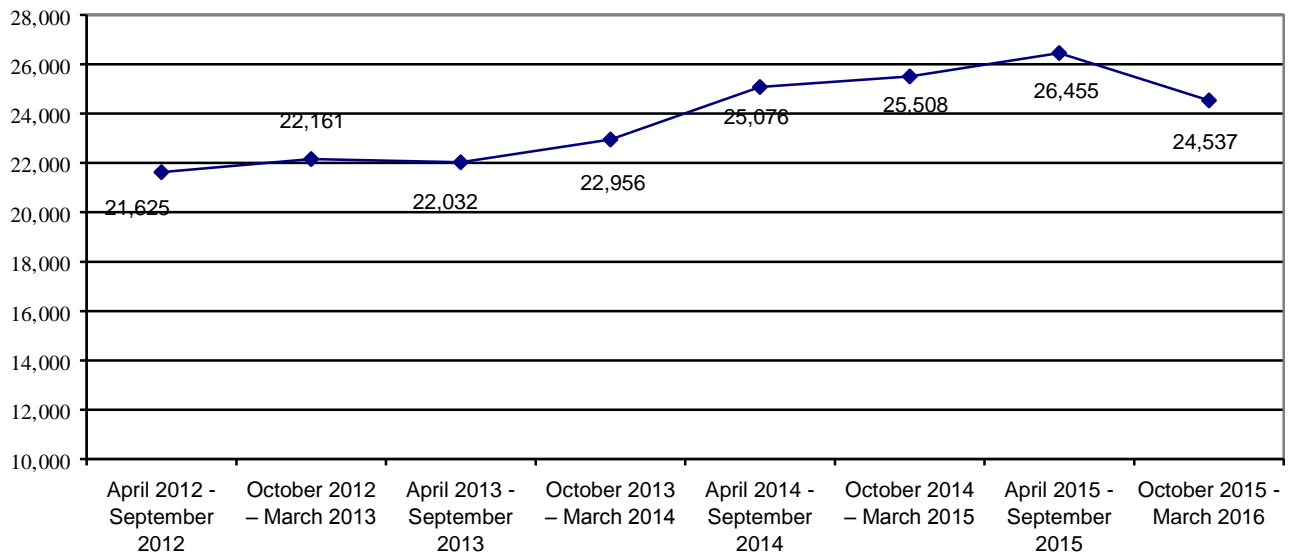
Table 1 shows the number of reports received by the Department by category of maltreatment for the current and past reporting periods. The Department continues to examine current Child Abuse Hotline policies and procedures to improve objectivity within screening tools and improve inter-rater reliability.

**TABLE 1
REPORTS BY REPORTING PERIOD AND TYPE OF MALTREATMENT**

	Neglect	Physical Abuse	Sexual Abuse	Emotional Abuse	Total
April 2012 – September 2012	14,722 68.1%	5,974 27.6%	764 3.5%	165 0.8%	21,625 100.0%
October 2012 – March 2013	14,916 67.2%	6,263 28.3%	815 3.7%	167 0.8%	22,161 100.0%
April 2013 – September 2013	15,560 70.6%	5,607 25.5%	731 3.3%	134 0.6%	22,032 100.0%
October 2013 – March 2014	15,766 68.7%	6,248 27.2%	772 3.4%	170 0.7%	22,956 100.0%
April 2014 – September 2014	18,022 71.9%	6,074 24.2%	847 3.4%	133 0.5%	25,076 100.0%
October 2014 – March 2015	18,338 71.9%	6,254 24.5%	787 3.1%	129 0.5%	25,508 100.0%
April 2015 – September 2015	19,276 72.9%	6,086 23.0%	954 3.6%	139 0.5%	26,455 100.0%
October 2015 – March 2016	17,493 71.3%	6,089 24.8%	788 3.2%	167 0.7%	24,537 100.0%

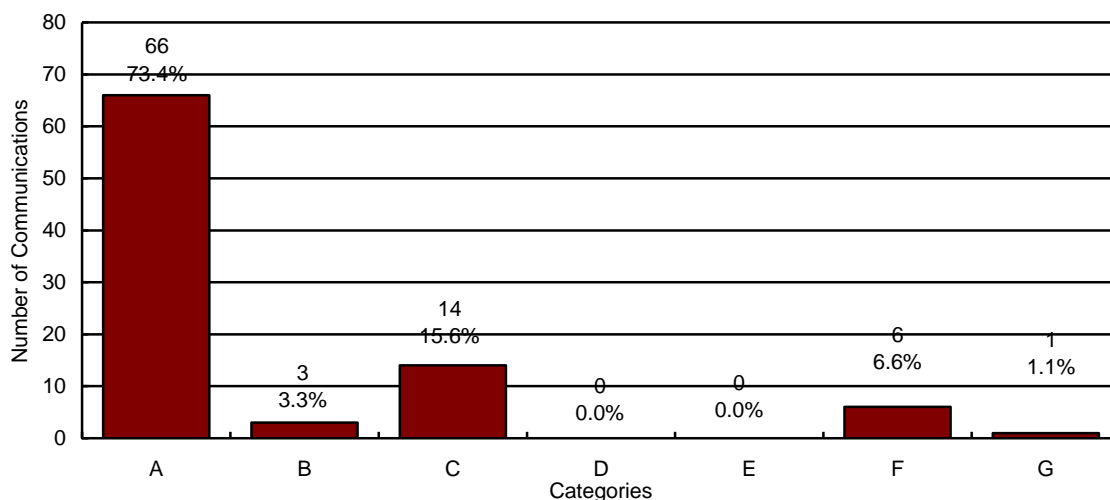
Chart 1 illustrates that the number of reports received by the Centralized Intake Hotline has decreased by 971 reports over the same reporting period last year. The chart below also shows the significant upward trend in reports received by the Centralized Intake Hotline that continued from FY 2011 through the last reporting period. However, a marked reduction in the number of reports received occurred this reporting period as illustrated in Chart 1 below.

**CHART 1
REPORTS OF CHILD ABUSE AND NEGLECT BY REPORTING PERIOD**



The Centralized Intake Hotline received a total of 74,618 calls during the reporting period. Of those, 72,559 were answered by a hotline specialist and 1,855 were abandoned calls. The 74,618 yielded 50,081 communications and 24,537 reports of abuse and neglect. Communications do not meet the statutory criteria of a report of maltreatment. A random sample was selected to represent the types of calls that do not get classified as reports of abuse and neglect. This random sample is contained in the chart below.

CHART 2
SAMPLE OF COMMUNICATIONS TO THE CENTRALIZED INTAKE HOTLINE THAT DO NOT MEET THE STATUTORY REQUIREMENTS OF A REPORT OF ABUSE OR NEGLECT



N=90

- A = Concern Only/No Allegation of Child Abuse or Neglect**
- B = Out of DCS Jurisdiction**
- C = Call Appropriate for Law Enforcement Jurisdiction³**
- D = Non-Caretaker Neglect/Child No Longer at Risk**
- E = Insufficient Information**
- F = Truancy/Custody Issues**
- G = Current Case Questions or Referrals**

The Department shall conduct a review at least weekly of communications concerning alleged abuse or neglect of a child, which do not meet criteria for a DCS Report, to verify the communications are properly classified.

³ The category “Call Appropriate for Law Enforcement Jurisdiction” refers to a situation where the alleged perpetrator is not a parent or primary caretaker and the allegations, if true, would constitute a crime.

Chart 3 below provides information on the number of reports that met each of the Centralized Intake Hotline priority classifications in the current and past reporting periods. In Table 2 and Table 3, data on total reports by priority is shown by county for the current and previous reporting periods. The priority determinations are made by personnel at the Child Abuse Hotline after the review of multiple factors, however, below is a high level summary of each response time criteria.

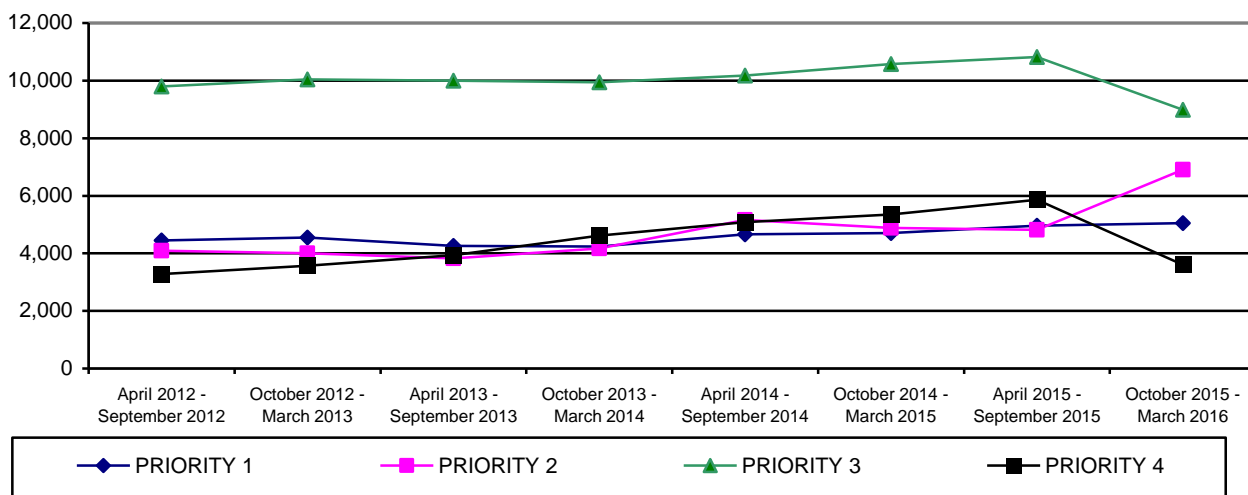
PRIORITY 1: Death of a child, near fatality, abuse or neglect that threatens to immediately cause, or has caused, serious harm or death, Serious physical injuries to a child (including but not limited to fractures, burns, multiple plane injuries, acceleration/deceleration injuries [shaken baby syndrome], injury to internal organs, etc.), child is alone and is not capable of caring for self or other children, evidence or disclosure of sexual abuse toward a child and the perpetrator has access to the child or the perpetrator is unknown, Substance Exposed Newborn (SEN) who is expected to be discharged from the hospital within 24 hours;¹

PRIORITY 2: Abuse or neglect of a child age 0-3, Abuse or neglect of a vulnerable child, and the child or perpetrator has been the subject of a prior report (this includes the child as a victim in a prior report or the adult as a perpetrator in a prior report), All criminal conduct allegations not requiring a Priority 1 response;

PRIORITY 3: Abuse or neglect of a child that occurred within the last 12 months and does not require a Priority 1 or 2 response; and

PRIORITY 4: Private Dependency Petition, abuse or neglect that has occurred over one year ago and does not require a Priority 1, 2 or 3 response.

**CHART 3
NUMBER OF REPORTS RECEIVED BY PRIORITY**



¹ As of February 1, 2016, the definition for each priority level changed. Data from this report and all future reports will use these new definitions.

TABLE 2
NUMBER OF REPORTS RECEIVED BY PRIORITY AND COUNTY FOR PERIOD OF
OCTOBER 1, 2015 THROUGH MARCH 31, 2016

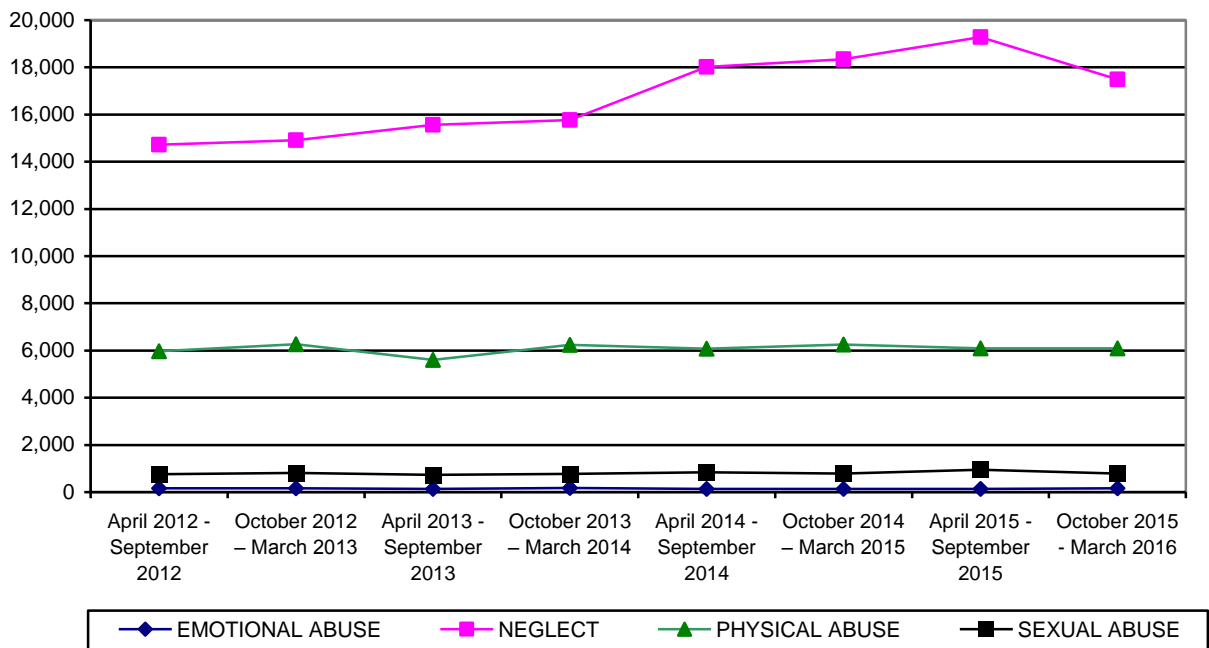
COUNTY	PRIORITY 1	PRIORITY 2	PRIORITY 3	PRIORITY 4	TOTAL	% OF TOTAL
APACHE	40	40	46	15	141	0.6%
COCHISE	83	135	160	45	423	1.7%
COCONINO	74	114	142	41	371	1.5%
GILA	48	59	84	29	220	0.9%
GRAHAM	37	51	60	14	162	0.7%
GREENLEE	0	0	0	0	0	0.0%
LA PAZ	21	17	21	6	65	0.3%
MARICOPA	3,108	3,925	5,266	2,216	14,515	59.2%
MOHAVE	157	249	239	96	741	3.0%
NAVAJO	112	127	152	62	453	1.8%
PIMA	764	1,351	1,726	645	4,486	18.3%
PINAL	293	451	572	215	1,531	6.2%
SANTA CRUZ	26	30	50	42	148	0.6%
YAVAPAI	136	201	283	111	731	3.0%
YUMA	150	153	181	66	550	2.2%
STATEWIDE	5,049	6,903	8,982	3,603	24,537	100.0%
% OF TOTAL	20.6%	28.1%	36.6%	14.7%	100.0%	

TABLE 3
NUMBER OF REPORTS RECEIVED BY PRIORITY AND COUNTY FOR PERIOD OF
APRIL 1, 2015 THROUGH SEPTEMBER 30, 2015

COUNTY	PRIORITY 1	PRIORITY 2	PRIORITY 3	PRIORITY 4	TOTAL	% OF TOTAL
APACHE	31	20	44	30	125	0.5%
COCHISE	78	95	217	58	448	1.7%
COCONINO	89	73	165	81	408	1.5%
GILA	70	65	98	42	275	1.0%
GRAHAM	38	38	64	37	177	0.7%
GREENLEE	0	0	0	0	0	0.0%
LA PAZ	18	21	35	14	88	0.3%
MARICOPA	3,014	2,736	6,201	3,621	15,572	58.9%
MOHAVE	175	190	350	176	891	3.4%
NAVAJO	114	80	177	114	485	1.8%
PIMA	780	913	2,154	964	4,811	18.2%
PINAL	311	327	700	378	1,716	6.5%
SANTA CRUZ	33	19	65	77	194	0.7%
YAVAPAI	101	146	308	159	714	2.7%
YUMA	110	94	239	108	551	2.1%
STATEWIDE	4,962	4,817	10,817	5,859	26,455	100.0%
% OF TOTAL	18.8%	18.2%	40.8%	22.2%	100.0%	

The following chart and tables provide the number of reports categorized by type of maltreatment. The total number of reports received by type of maltreatment is displayed in Chart 4. In Table 4 and Table 5 data on the total reports by type of maltreatment is shown by county for the current and previous reporting periods.

**CHART 4
NUMBER OF REPORTS RECEIVED BY TYPE OF MALTREATMENT**



**TABLE 4
NUMBER OF REPORTS RECEIVED BY TYPE OF MALTREATMENT AND COUNTY FOR PERIOD OF OCTOBER 1, 2015 THROUGH MARCH 31, 2016**

COUNTY	EMOTIONAL ABUSE	NEGLECT	PHYSICAL ABUSE	SEXUAL ABUSE	TOTAL	% OF TOTAL
APACHE	1	115	20	5	141	0.6%
COCHISE	4	309	93	17	423	1.7%
COCONINO	3	285	72	11	371	1.5%
GILA	1	162	47	10	220	0.9%
GRAHAM	1	114	42	5	162	0.7%
GREENLEE	0	0	0	0	0	0.0%
LA PAZ	0	48	15	2	65	0.3%
MARICOPA	92	10,166	3,796	461	14,515	59.2%
MOHAVE	7	544	170	20	741	3.0%
NAVAJO	0	338	96	19	453	1.8%
PIMA	33	3,298	1,015	140	4,486	18.3%
PINAL	11	1,080	387	53	1,531	6.2%
SANTA CRUZ	3	94	45	6	148	0.6%
YAVAPAI	6	547	157	21	731	3.0%
YUMA	5	393	134	18	550	2.2%
STATEWIDE	167	17,493	6,089	788	24,537	100.0%
% OF TOTAL	0.7%	71.3%	24.8%	3.2%	100.0%	

**TABLE 5
NUMBER OF REPORTS RECEIVED BY TYPE OF MALTREATMENT AND COUNTY FOR
PERIOD OF APRIL 1, 2015 THROUGH SEPTEMBER 30, 2015**

COUNTY	EMOTIONAL ABUSE	NEGLECT	PHYSICAL ABUSE	SEXUAL ABUSE	TOTAL	% OF TOTAL
APACHE	0	98	21	6	125	0.5%
COCHISE	1	320	107	20	448	1.7%
COCONINO	2	302	85	19	408	1.5%
GILA	2	221	42	10	275	1.0%
GRAHAM	2	128	40	7	177	0.7%
GREENLEE	0	0	0	0	0	0.0%
LA PAZ	0	68	18	2	88	0.3%
MARICOPA	79	11,182	3,740	571	15,572	58.9%
MOHAVE	3	667	189	32	891	3.4%
NAVAJO	3	385	77	20	485	1.8%
PIMA	33	3,598	1,045	135	4,811	18.2%
PINAL	8	1,235	408	65	1,716	6.5%
SANTA CRUZ	1	134	46	13	194	0.7%
YAVAPAI	2	536	136	40	714	2.7%
YUMA	3	402	132	14	551	2.1%
STATEWIDE	139	19,276	6,086	954	26,455	100.0%
% OF TOTAL	0.5%	72.9%	23.0%	3.6%	100.0%	

ASSIGNMENT OF INVESTIGATIONS

During the current reporting period, there were 24,537 calls to the Hotline that met the statutory criteria for a report. Of those, 344 reports fell within the jurisdiction of military or tribal governments. All reports had response data entered at the time this report was compiled. The assignment of the remaining 24,193 reports for investigation was as follows:

The following tables and charts in this section provide statewide and county level information on these reports assigned to DCS. Of these, DCS completed 18,771 (77.6%) of their assigned investigations. Those not completed remain open when the investigation is still in process, when the specialist is waiting for the results of a law enforcement investigation and/or receipt of records that impact the investigation finding, or when the investigation has been completed but is awaiting supervisory review and approval.

**CHART 5
NUMBER OF REPORTS ASSIGNED FOR INVESTIGATION BY PRIORITY AND REPORTING PERIOD**

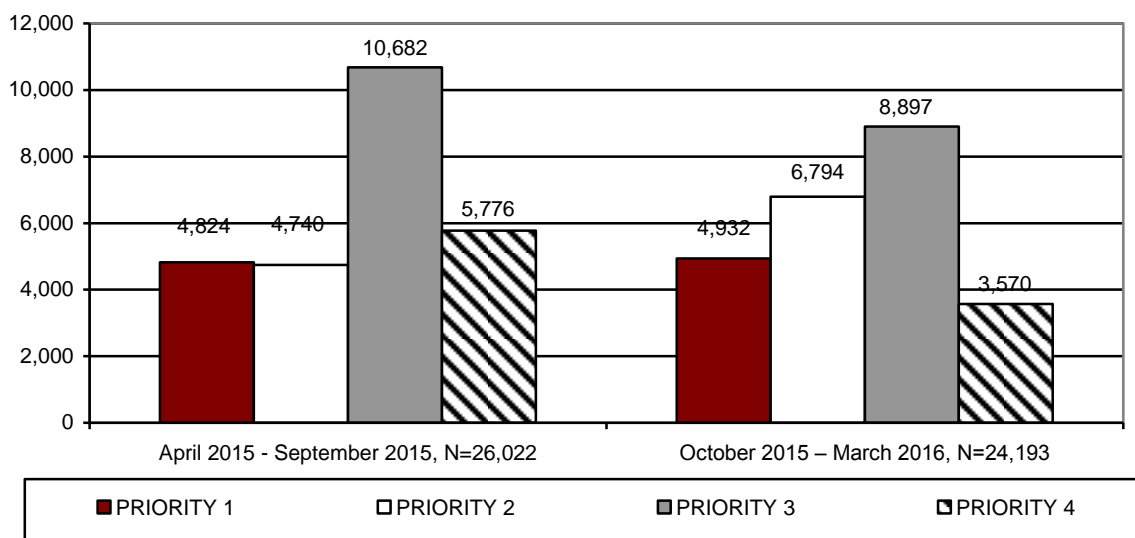


TABLE 6
NUMBER OF REPORTS ASSIGNED FOR INVESTIGATION BY PRIORITY AND COUNTY
FOR PERIOD OF OCTOBER 1, 2015 THROUGH MARCH 31, 2016

COUNTY	PRIORITY 1	PRIORITY 2	PRIORITY 3	PRIORITY 4	TOTAL	% OF TOTAL
APACHE	30	32	36	12	110	0.5%
COCHISE	82	135	160	45	422	1.7%
COCONINO	63	95	129	34	321	1.3%
GILA	41	50	77	25	193	0.8%
GRAHAM	34	48	55	14	151	0.6%
GREENLEE	0	0	0	0	0	0.0%
LA PAZ	15	16	18	5	54	0.2%
MARICOPA	3,091	3,916	5,259	2,215	14,481	59.9%
MOHAVE	153	247	238	95	733	3.0%
NAVAJO	84	102	140	54	380	1.6%
PIMA	753	1,339	1,716	643	4,451	18.4%
PINAL	280	439	563	211	1,493	6.2%
SANTA CRUZ	26	30	50	42	148	0.6%
YAVAPAI	133	193	276	109	711	2.9%
YUMA	147	152	180	66	545	2.3%
STATEWIDE	4,932	6,794	8,897	3,570	24,193	100.0%
% OF TOTAL	20.4%	28.1%	36.8%	14.8%	100.0%	

TABLE 7
NUMBER OF REPORTS ASSIGNED FOR INVESTIGATION BY PRIORITY AND COUNTY
FOR PERIOD OF APRIL 1, 2015 THROUGH SEPTEMBER 30, 2015

COUNTY	PRIORITY 1	PRIORITY 2	PRIORITY 3	PRIORITY 4	TOTAL	% OF TOTAL
APACHE	24	16	28	19	87	0.3%
COCHISE	78	95	217	58	448	1.7%
COCONINO	68	63	142	71	344	1.3%
GILA	52	57	87	34	230	0.9%
GRAHAM	32	35	58	33	158	0.6%
GREENLEE	0	0	0	0	0	0.0%
LA PAZ	11	15	24	12	62	0.2%
MARICOPA	3,000	2,725	6,191	3,615	15,531	59.8%
MOHAVE	170	188	349	174	881	3.4%
NAVAJO	80	69	150	96	395	1.5%
PIMA	771	903	2,141	957	4,772	18.3%
PINAL	298	320	687	366	1,671	6.4%
SANTA CRUZ	33	19	65	77	194	0.8%
YAVAPAI	99	141	304	156	700	2.7%
YUMA	108	94	239	108	549	2.1%
STATEWIDE	4,824	4,740	10,682	5,776	26,022	100.0%
% OF TOTAL	18.5%	18.2%	41.1%	22.2%	100.0%	

CHART 6
NUMBER OF REPORTS ASSIGNED FOR INVESTIGATION BY TYPE OF MALTREATMENT AND REPORTING PERIOD

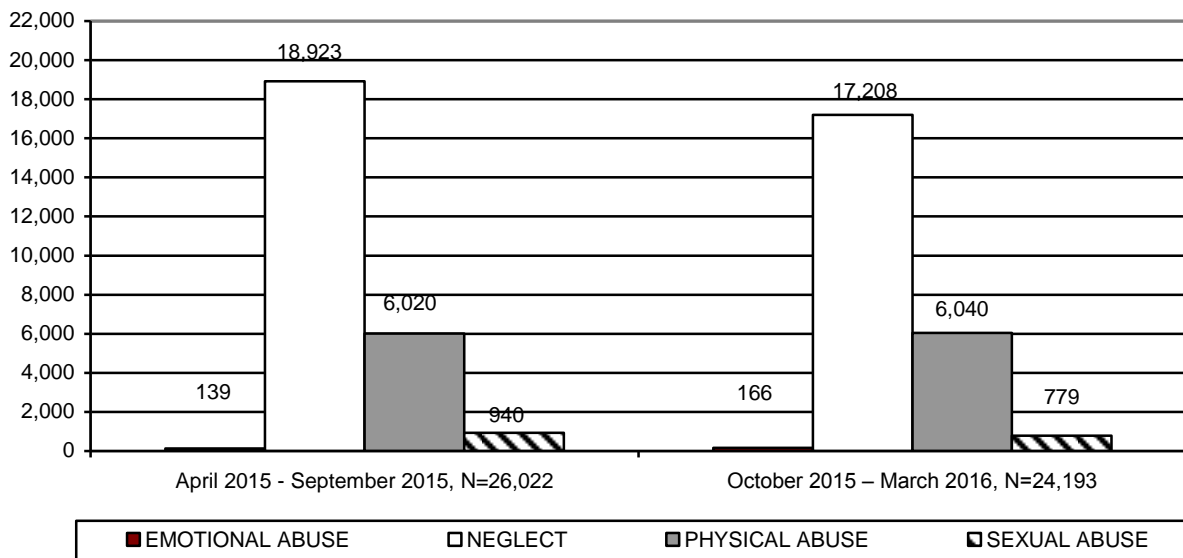


TABLE 8
NUMBER OF REPORTS ASSIGNED FOR INVESTIGATION BY TYPE OF MALTREATMENT AND COUNTY FOR PERIOD OF OCTOBER 1, 2015 THROUGH MARCH 31, 2016

COUNTY	EMOTIONAL ABUSE	NEGLECT	PHYSICAL ABUSE	SEXUAL ABUSE	TOTAL	% OF TOTAL
APACHE	0	89	16	5	110	0.5%
COCHISE	4	308	93	17	422	1.7%
COCONINO	3	241	66	11	321	1.3%
GILA	1	139	43	10	193	0.8%
GRAHAM	1	106	39	5	151	0.6%
GREENLEE	0	0	0	0	0	0.0%
LA PAZ	0	41	12	1	54	0.2%
MARICOPA	92	10,135	3,795	459	14,481	59.9%
MOHAVE	7	537	170	19	733	3.0%
NAVAJO	0	280	83	17	380	1.6%
PIMA	33	3,269	1,010	139	4,451	18.4%
PINAL	11	1,049	381	52	1,493	6.2%
SANTA CRUZ	3	94	45	6	148	0.6%
YAVAPAI	6	531	154	20	711	2.9%
YUMA	5	389	133	18	545	2.3%
STATEWIDE	166	17,208	6,040	779	24,193	100.0%
% OF TOTAL	0.7%	71.1%	25.0%	3.2%	100.0%	

**TABLE 9
NUMBER OF REPORTS ASSIGNED FOR INVESTIGATION BY TYPE OF MALTREATMENT
AND COUNTY FOR PERIOD OF APRIL 1, 2015 THROUGH SEPTEMBER 30, 2015**

COUNTY	EMOTIONAL ABUSE	NEGLECT	PHYSICAL ABUSE	SEXUAL ABUSE	TOTAL	% OF TOTAL
APACHE	0	69	15	3	87	0.3%
COCHISE	1	320	107	20	448	1.7%
COCONINO	2	253	73	16	344	1.3%
GILA	2	181	37	10	230	0.9%
GRAHAM	2	113	36	7	158	0.6%
GREENLEE	0	0	0	0	0	0.0%
LA PAZ	0	48	12	2	62	0.2%
MARICOPA	79	11,147	3,736	569	15,531	59.8%
MOHAVE	3	659	187	32	881	3.4%
NAVAJO	3	309	66	17	395	1.5%
PIMA	33	3,567	1,039	133	4,772	18.3%
PINAL	8	1,201	398	64	1,671	6.4%
SANTA CRUZ	1	134	46	13	194	0.8%
YAVAPAI	2	522	136	40	700	2.7%
YUMA	3	400	132	14	549	2.1%
STATEWIDE	139	18,923	6,020	940	26,022	100.0%
% OF TOTAL	0.5%	23.1%	23.1%	3.6%	100.0%	

INVESTIGATIONS OF CHILD ABUSE AND NEGLECT

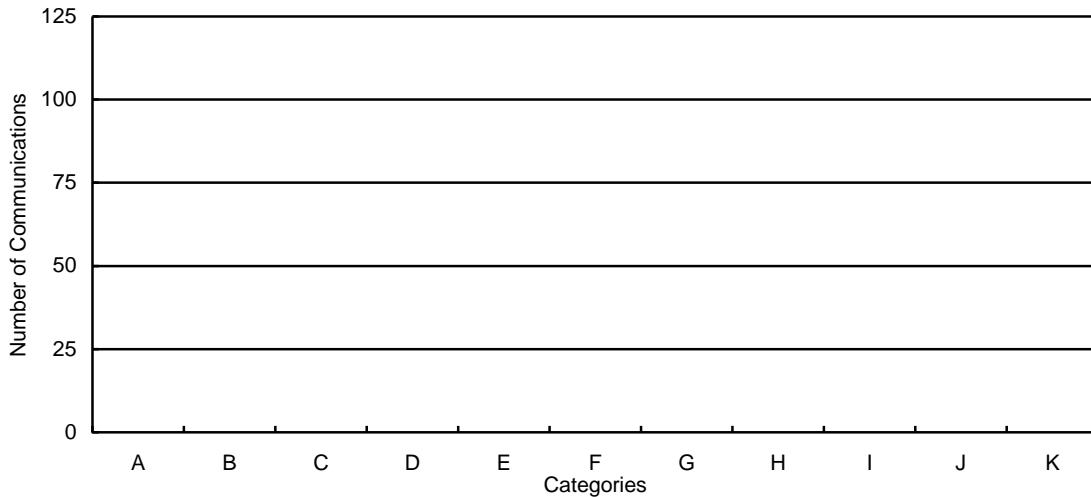
**TABLE 10
NUMBER OF REPORTS WITHOUT RESPONSE DATA BY PRIORITY AND COUNTY FOR
PERIOD OF OCTOBER 1, 2015 THROUGH MARCH 31, 2016**

COUNTY	PRIORITY 1	PRIORITY 2	PRIORITY 3	PRIORITY 4	TOTAL	% OF TOTAL
APACHE	0	0	0	0	0	0.0%
COCHISE	0	0	0	0	0	0.0%
COCONINO	0	0	0	0	0	0.0%
GILA	0	0	0	0	0	0.0%
GRAHAM	0	0	0	0	0	0.0%
GREENLEE	0	0	0	0	0	0.0%
LA PAZ	0	0	0	0	0	0.0%
MARICOPA	0	0	0	0	0	0.0%
MOHAVE	0	0	0	0	0	0.0%
NAVAJO	0	0	0	0	0	0.0%
PIMA	0	0	0	0	0	0.0%
PINAL	0	0	0	0	0	0.0%
SANTA CRUZ	0	0	0	0	0	0.0%
YAVAPAI	0	0	0	0	0	0.0%
YUMA	0	0	0	0	0	0.0%
STATEWIDE	0	0	0	0	0	0.0%
% OF TOTAL	0.0%	0.0%	0.0%	0.0%	0.0%	

By statute, a random sample of reports that do not have data on an investigative response in each reporting period is required. In addition, short descriptions of these reports are also required. As all reports were responded to during this period, there is no data to be displayed in Table 10 or Chart 7. Chart 7 would have displayed the reports in brief descriptive categories.

All reports were responded to during this reporting period. Therefore, no data will be displayed in Chart 7 below.

**CHART 7
NUMBER OF REPORTS WITHOUT RESPONSE DATA BY CATEGORY FOR THE PERIOD
OF OCTOBER 1, 2015 THROUGH MARCH 31, 2016**



N=0

- A = Adolescent, Past Abuse, No Current Injuries**
- B = Inadequate Housekeeping Standards**
- C = Inappropriate Vehicle Operation**
- D = No Specific Allegations**
- E = Past Abuse no current injuries**
- F = Adolescent, current minor injuries**
- G = Non-adolescent, current minor injuries**
- H = Poor parenting skills**
- I = Left with inappropriate caregiver**
- J = Law Enforcement Issue**
- K = Out of Control Teenager**

CHART 8
NUMBER OF REPORTS ASSIGNED FOR INVESTIGATION BY PRIORITY AND REPORTING PERIOD FOR REPORTS OPEN FOR INVESTIGATION

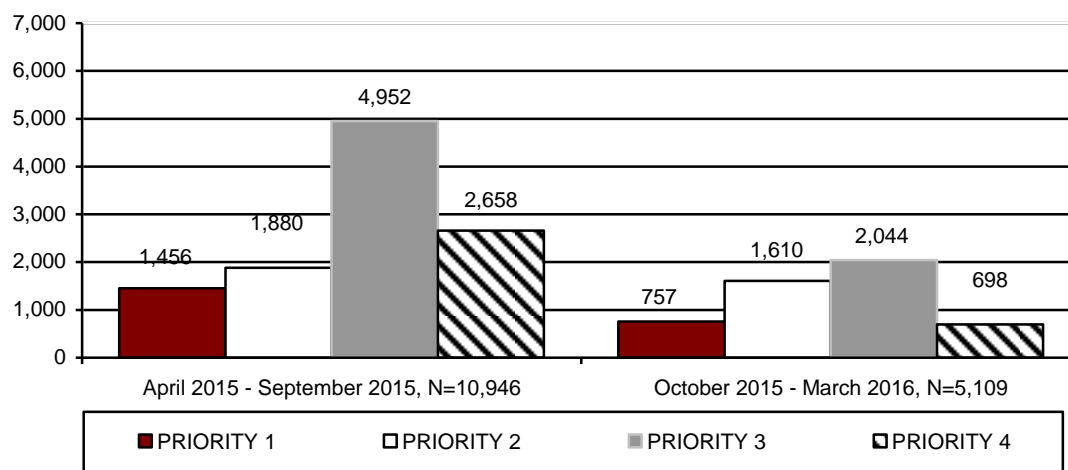


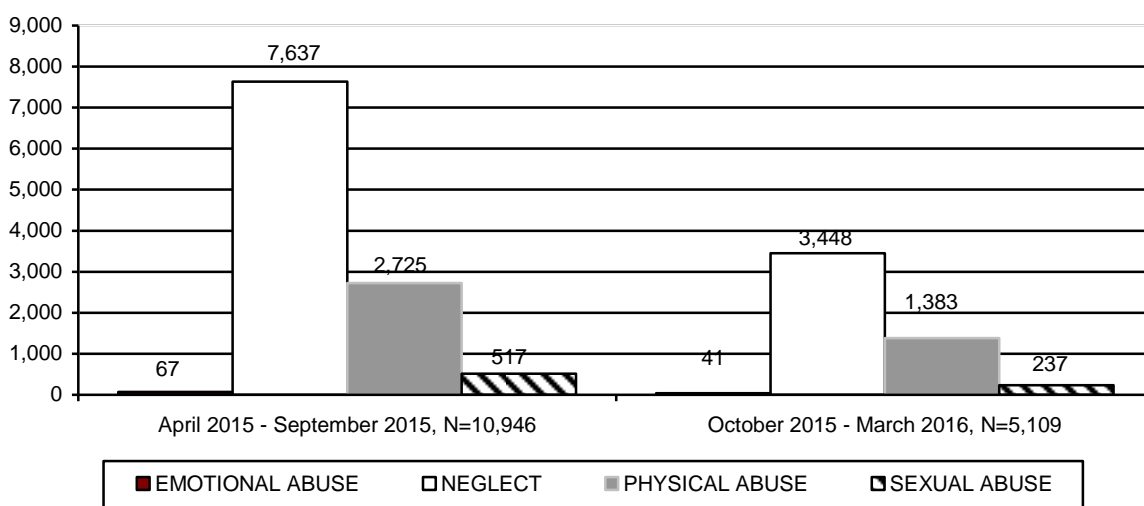
TABLE 11
NUMBER OF REPORTS BY PRIORITY AND COUNTY FOR REPORTS OPEN FOR INVESTIGATION FOR PERIOD OF OCTOBER 1, 2015 THROUGH MARCH 31, 2016

COUNTY	PRIORITY 1	PRIORITY 2	PRIORITY 3	PRIORITY 4	TOTAL	% OF TOTAL
APACHE	0	0	0	0	0	0.0%
COCHISE	16	35	30	10	91	1.8%
COCONINO	5	10	3	0	18	0.4%
GILA	8	25	33	13	79	1.5%
GRAHAM	3	7	6	1	17	0.3%
GREENLEE	0	0	0	0	0	0.0%
LA PAZ	1	8	10	1	20	0.4%
MARICOPA	556	1,127	1,527	539	3,749	73.4%
MOHAVE	26	82	63	8	179	3.5%
NAVAJO	1	4	3	0	8	0.2%
PIMA	77	158	196	65	496	9.7%
PINAL	30	100	120	36	286	5.6%
SANTA CRUZ	5	6	11	7	29	0.6%
YAVAPAI	7	17	17	4	45	0.9%
YUMA	22	31	25	14	92	1.8%
STATEWIDE	757	1,610	2,044	698	5,109	100.0%
% OF TOTAL	14.8%	31.5%	40.0%	13.7%	100.0%	

TABLE 12
NUMBER OF REPORTS BY PRIORITY AND COUNTY FOR REPORTS OPEN FOR INVESTIGATION FOR PERIOD OF APRIL 1, 2015 THROUGH SEPTEMBER 30, 2015

COUNTY	PRIORITY 1	PRIORITY 2	PRIORITY 3	PRIORITY 4	TOTAL	% OF TOTAL
APACHE	0	1	4	4	9	0.1%
COCHISE	48	61	161	44	314	2.9%
COCONINO	16	17	41	21	95	0.9%
GILA	32	47	72	29	180	1.6%
GRAHAM	19	22	39	20	100	0.9%
GREENLEE	0	0	0	0	0	0.0%
LA PAZ	5	5	11	5	26	0.2%
MARICOPA	956	1,230	3,237	1,806	7,229	66.0%
MOHAVE	58	74	169	94	395	3.6%
NAVAJO	3	4	15	7	29	0.3%
PIMA	166	217	629	313	1,325	12.1%
PINAL	84	121	357	151	713	6.5%
SANTA CRUZ	23	11	52	68	154	1.4%
YAVAPAI	28	52	101	67	248	2.3%
YUMA	18	18	64	29	129	1.2%
STATEWIDE	1,456	1,880	4,952	2,658	10,946	100.0%
% OF TOTAL	13.3%	17.2%	45.2%	24.3%	100.0%	

CHART 9
NUMBER OF REPORTS ASSIGNED FOR INVESTIGATION BY TYPE OF MALTREATMENT FOR REPORTS OPEN FOR INVESTIGATION



The number of reports assigned for investigation for reports open for investigation will change each reporting period as investigations are completed and closed by next reporting period.

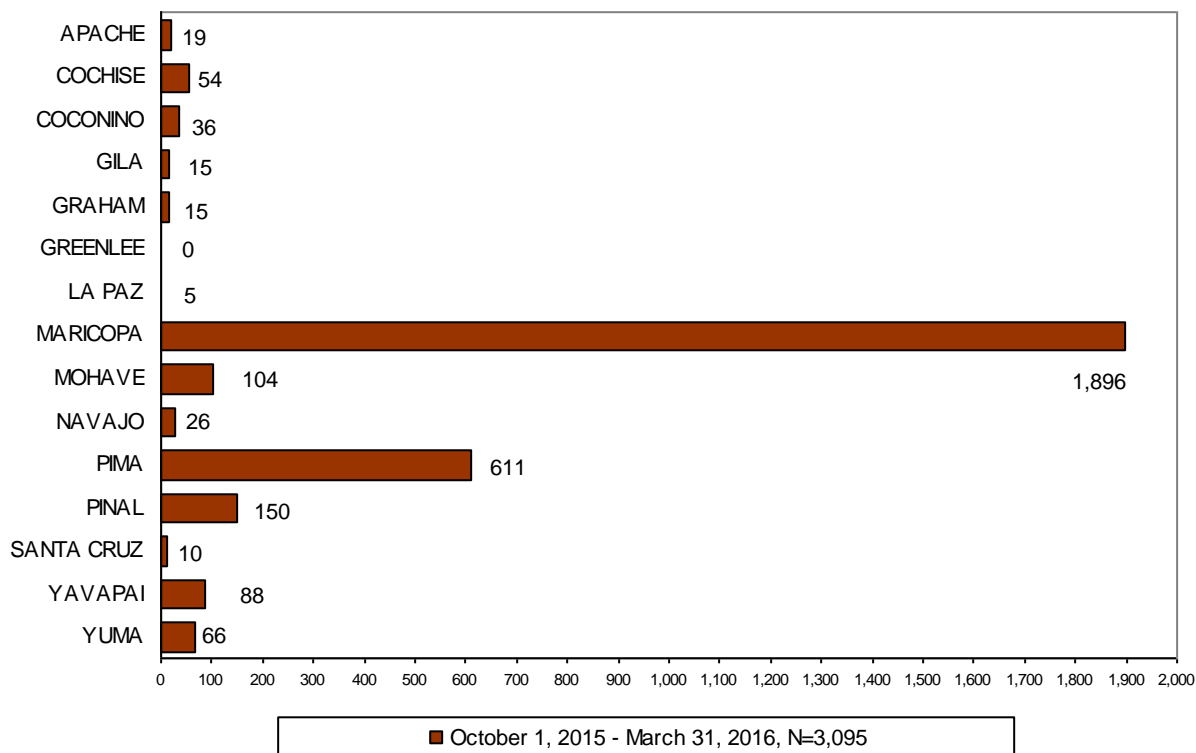
TABLE 13
NUMBER OF REPORTS BY TYPE OF MALTREATMENT AND COUNTY FOR REPORTS
OPEN FOR INVESTIGATION FOR PERIOD OF
OCTOBER 1, 2015 THROUGH MARCH 31, 2016

COUNTY	EMOTIONAL ABUSE	NEGLECT	PHYSICAL ABUSE	SEXUAL ABUSE	TOTAL	% OF TOTAL
APACHE	0	0	0	0	0	0.0%
COCHISE	2	65	18	6	91	1.8%
COCONINO	0	15	2	1	18	0.4%
GILA	1	48	22	8	79	1.5%
GRAHAM	0	12	4	1	17	0.3%
GREENLEE	0	0	0	0	0	0.0%
LA PAZ	0	14	5	1	20	0.4%
MARICOPA	26	2,528	1,029	166	3,749	73.4%
MOHAVE	1	123	50	5	179	3.5%
NAVAJO	0	5	3	0	8	0.2%
PIMA	5	341	124	26	496	9.7%
PINAL	3	193	78	12	286	5.6%
SANTA CRUZ	0	17	11	1	29	0.6%
YAVAPAI	1	26	14	4	45	0.9%
YUMA	2	61	23	6	92	1.8%
STATEWIDE	41	3,448	1,383	237	5,109	100.0%
% OF TOTAL	0.8%	67.5%	27.1%	4.6%	100.0%	

TABLE 14
NUMBER OF REPORTS BY TYPE OF MALTREATMENT AND COUNTY FOR REPORTS
OPEN FOR INVESTIGATION FOR PERIOD OF
APRIL 1, 2015 THROUGH SEPTEMBER 30, 2015

COUNTY	EMOTIONAL ABUSE	NEGLECT	PHYSICAL ABUSE	SEXUAL ABUSE	TOTAL	% OF TOTAL
APACHE	0	7	2	0	9	0.1%
COCHISE	1	216	81	16	314	2.9%
COCONINO	0	62	30	3	95	0.9%
GILA	2	138	31	9	180	1.6%
GRAHAM	1	66	26	7	100	0.9%
GREENLEE	0	0	0	0	0	0.0%
LA PAZ	0	21	3	2	26	0.2%
MARICOPA	43	4,974	1,880	332	7,229	66.0%
MOHAVE	3	289	85	18	395	3.6%
NAVAJO	0	24	5	0	29	0.3%
PIMA	10	957	285	73	1,325	12. %
PINAL	3	511	174	25	713	6.5%
SANTA CRUZ	1	103	40	10	154	1.4%
YAVAPAI	2	182	47	17	248	2.3%
YUMA	1	87	36	5	129	1.2%
STATEWIDE	67	7,637	2,725	517	10,946	100.0%
% OF TOTAL	0.6%	69.8%	24.9%	4.7%	100.0%	

**CHART 10
NUMBER OF REPORTS ASSIGNED FOR INVESTIGATION WHERE A REMOVAL OCCURRED**



**TABLE 15
NUMBER OF REPORTS ASSIGNED FOR INVESTIGATION BY COUNTY WHERE A REMOVAL OCCURRED FOR THE PERIOD OCTOBER 1, 2015 THROUGH MARCH 31, 2016**

COUNTY	NUMBER OF REPORTS ASSIGNED	NUMBER OF REPORTS ASSIGNED WITH A REMOVAL	% OF REPORTS WHERE A CHILD WAS REMOVED
APACHE	110	19	17.3%
COCHISE	422	54	12.8%
COCONINO	320	36	11.3%
GILA	192	15	7.8%
GRAHAM	152	15	9.9%
GREENLEE	0	0	0.0%
LA PAZ	54	5	9.3%
MARICOPA	14,481	1,896	13.1%
MOHAVE	733	104	14.2%
NAVAJO	381	26	6.8%
PIMA	4,451	611	13.7%
PINAL	1,493	150	10.0%
SANTA CRUZ	148	10	6.8%
YAVAPAI	711	88	12.4%
YUMA	545	66	12.1%
STATEWIDE	24,193	3,095	12.8%

TABLE 16
**NUMBER OF REPORTS ASSIGNED FOR INVESTIGATION BY COUNTY WHERE A
 REMOVAL OCCURRED FOR THE PERIOD APRIL 1, 2015 THROUGH SEPTEMBER 30, 2015**

COUNTY	NUMBER OF REPORTS ASSIGNED	NUMBER OF REPORTS ASSIGNED WITH A REMOVAL	% OF REPORTS WHERE A CHILD REMOVED
APACHE	87	13	14.9%
COCHISE	448	43	9.6%
COCONINO	344	50	14.5%
GILA	230	19	8.3%
GRAHAM	158	10	6.3%
GREENLEE	0	0	0.0%
LA PAZ	62	5	8.1%
MARICOPA	15,531	2,021	13.0%
MOHAVE	881	114	12.9%
NAVAJO	395	40	10.1%
PIMA	4,772	627	13.1%
PINAL	1,671	198	11.8%
SANTA CRUZ	194	21	10.8%
YAVAPAI	700	65	9.3%
YUMA	549	54	9.8%
STATEWIDE	26,022	3,280	12.6%

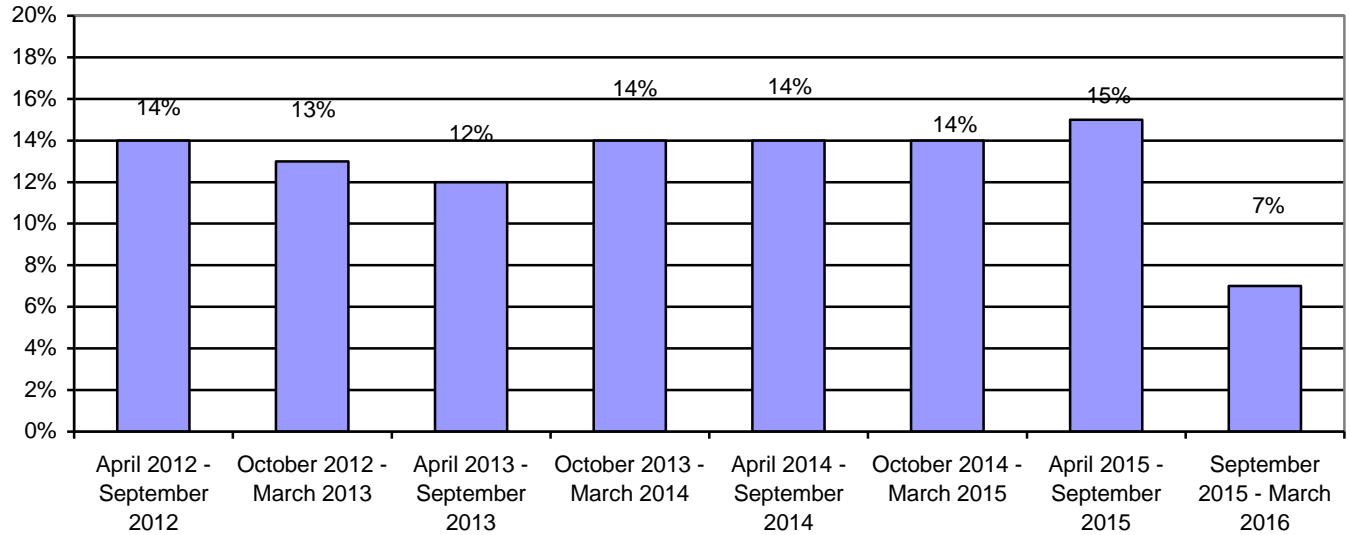
COMPLETED INVESTIGATIONS

Substantiated reports are reports where the Department has determined that at least one of the allegations in the report of abuse and/or neglect is true. The number of reports that are considered substantiated are a subset of the total number of reports that were received, investigated, and closed during the reporting period.

The preliminary number of reports that are substantiated for the current reporting period is 1,658. For the prior reporting period, the number of reports that were assigned for investigation that resulted in substantiated findings was revised from 1,926 to 3,836. This number will change each reporting period as a result of subsequent decisions based on parents' rights to due process as well as the completion of investigations and findings.

- The preliminary substantiation rate for the current reporting period is 7%. However, the substantiation rate for the current period is anticipated to be revised upwards in the next semi-annual report.
- The substantiation rate for the prior reporting period is 15%. However, when initially reported, the April 2015 – September 2015 substantiation rate was 7%.

**CHART 11
SUBSTANTIATION RATE BY REPORTING
PERIOD**



Information on both proposed substantiations and finalized substantiations is provided in the charts and tables below:

- For information on the proposed substantiated investigation findings—classified by priority—for the current and prior reporting period, see Chart 12, Table 17, and Table 18.
- For information on the proposed substantiated investigation findings—classified by type of maltreatment—for the current and prior reporting period, see Chart 13, Table 19, and Table 20.
- For information on the substantiated investigation findings—classified by priority—for the current and prior reporting period, see Chart 14, Table 21, and Table 22.
- For information on the substantiated investigation findings—classified by type of maltreatment—for the current and prior reporting period, see Chart 15, Table 23, and Table 24.

CHART 12
NUMBER OF REPORTS ASSIGNED FOR INVESTIGATION BY PRIORITY AND REPORTING PERIOD THAT RESULTED IN PROPOSED SUBSTANTIATION

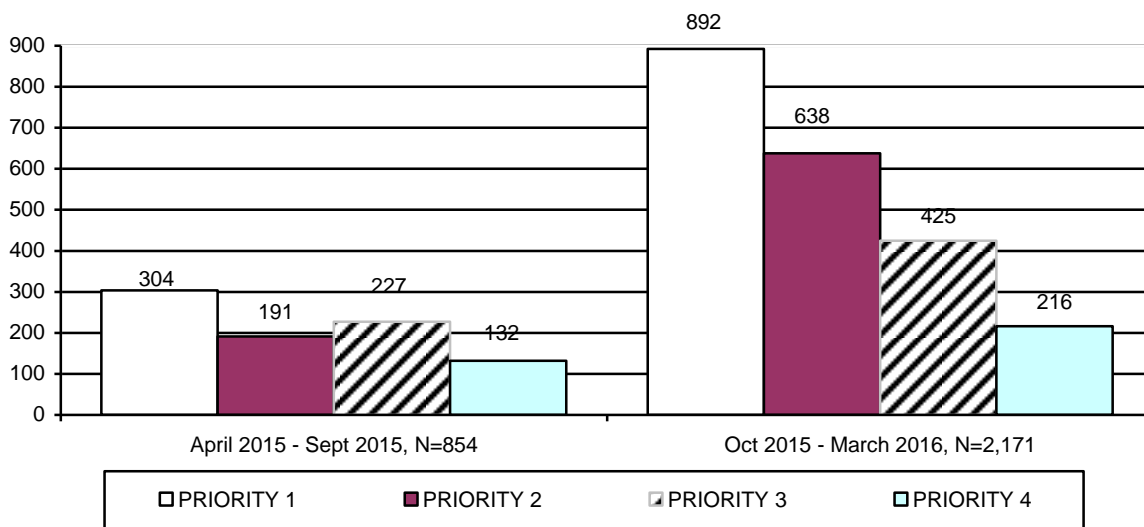


TABLE 17
NUMBER OF REPORTS ASSIGNED FOR INVESTIGATION BY PRIORITY AND COUNTY THAT RESULTED IN PROPOSED SUBSTANTIATION FOR PERIOD OF OCTOBER 1, 2015 THROUGH MARCH 31, 2016

COUNTY	PRIORITY 1	PRIORITY 2	PRIORITY 3	PRIORITY 4	TOTAL	% OF TOTAL
APACHE	7	5	2	0	14	0.6%
COCHISE	11	18	9	0	38	1.8%
COCONINO	14	7	8	2	31	1.4%
GILA	13	3	2	1	19	0.9%
GRAHAM	3	2	3	0	8	0.4%
GREENLEE	0	0	0	0	0	0.0%
LA PAZ	4	3	1	0	8	0.4%
MARICOPA	579	365	270	170	1,384	63.7%
MOHAVE	46	22	17	7	92	4.2%
NAVAJO	6	4	2	1	13	0.6%
PIMA	116	142	75	14	347	16.0%
PINAL	39	29	18	11	97	4.5%
SANTA CRUZ	4	1	1	1	7	0.3%
YAVAPAI	20	24	11	7	62	2.9%
YUMA	30	13	6	2	51	2.3%
STATEWIDE	892	638	425	216	2,171	100.0%
% OF TOTAL	41.1%	29.4%	19.6%	9.9%	100.0%	

TABLE 18
NUMBER OF REPORTS ASSIGNED FOR INVESTIGATION BY PRIORITY AND COUNTY
THAT RESULTED IN PROPOSED SUBSTANTIATION FOR PERIOD OF
APRIL 1, 2015 THROUGH SEPTEMBER 30, 2015

COUNTY	PRIORITY 1	PRIORITY 2	PRIORITY 3	PRIORITY 4	TOTAL	% OF TOTAL
APACHE	3	1	0	0	4	0.5%
COCHISE	5	7	5	2	19	2.2%
COCONINO	7	5	7	3	22	2.6%
GILA	3	2	3	0	8	0.9%
GRAHAM	1	0	1	0	2	0.2%
GREENLEE	0	0	0	0	0	0.0%
LA PAZ	0	0	1	0	1	0.1%
MARICOPA	213	117	147	98	575	67.3%
MOHAVE	9	10	14	3	36	4.2%
NAVAJO	4	2	4	0	10	1.2%
PIMA	15	28	23	10	76	8.9%
PINAL	24	12	8	15	59	6.9%
SANTA CRUZ	3	0	2	0	5	0.6%
YAVAPAI	11	6	9	0	26	3.0%
YUMA	6	1	3	1	11	1.3%
STATEWIDE	304	191	227	132	854	100.0%
% OF TOTAL	35.6%	22.4%	26.6%	15.5%	100.0%	

CHART 13
NUMBER OF REPORTS ASSIGNED FOR INVESTIGATION BY TYPE OF MALTREATMENT
THAT RESULTED IN PROPOSED SUBSTANTIATION

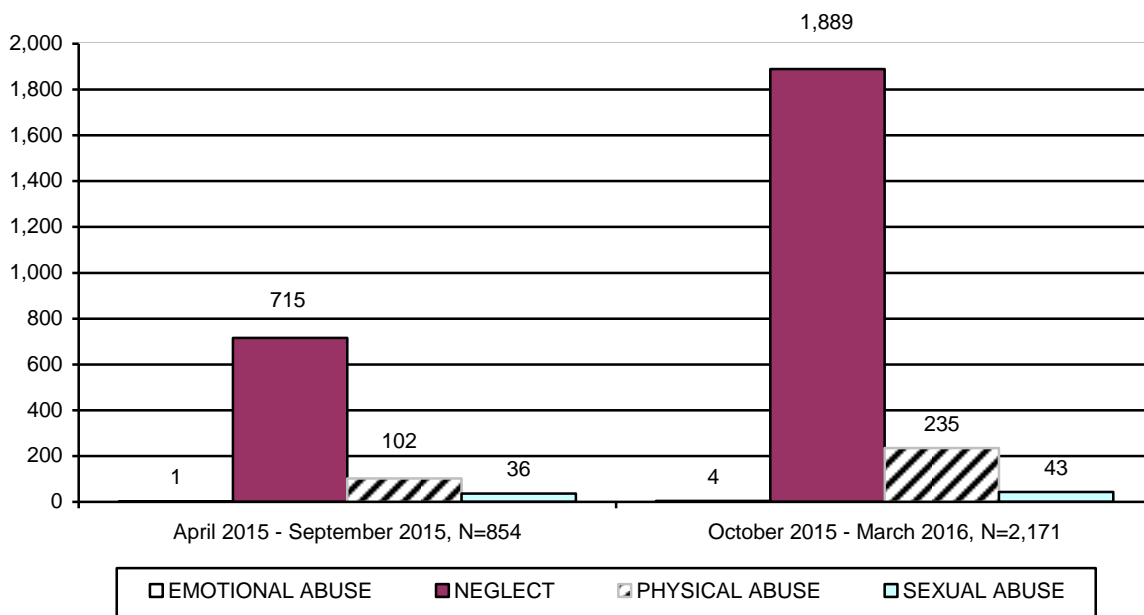


TABLE 19
NUMBER OF REPORTS ASSIGNED FOR INVESTIGATION BY TYPE OF MALTREATMENT
BY COUNTY THAT RESULTED IN PROPOSED SUBSTANTIATION FOR PERIOD OF
OCTOBER 1, 2015 THROUGH MARCH 31, 2016

COUNTY	EMOTIONAL ABUSE	NEGLECT	PHYSICAL ABUSE	SEXUAL ABUSE	TOTAL	% OF TOTAL
APACHE	0	14	0	0	14	0.6%
COCHISE	0	29	8	1	38	1.8%
COCONINO	0	26	5	0	31	1.4%
GILA	0	19	0	0	19	0.9%
GRAHAM	0	5	2	1	8	0.4%
GREENLEE	0	0	0	0	0	0.0%
LA PAZ	0	8	0	0	8	0.4%
MARICOPA	2	1,212	140	30	1,384	63.7%
MOHAVE	1	86	4	1	92	4.2%
NAVAJO	0	11	0	2	13	0.6%
PIMA	1	292	49	5	347	16.0%
PINAL	0	83	14	0	97	4.5%
SANTA CRUZ	0	5	1	1	7	0.3%
YAVAPAI	0	53	8	1	62	2.9%
YUMA	0	46	4	1	51	2.3%
STATEWIDE	4	1,889	235	43	2,171	100.0%
% OF TOTAL	0.2%	87.0%	10.8%	2.0%	100.0%	

TABLE 20
NUMBER OF REPORTS ASSIGNED FOR INVESTIGATION BY TYPE OF MALTREATMENT
BY COUNTY THAT RESULTED IN PROPOSED SUBSTANTIATION FOR PERIOD OF
APRIL 1, 2015 THROUGH SEPTEMBER 30, 2015

COUNTY	EMOTIONAL ABUSE	NEGLECT	PHYSICAL ABUSE	SEXUAL ABUSE	TOTAL	% OF TOTAL
APACHE	0	4	0	0	4	0.5%
COCHISE	0	16	3	0	19	2.2%
COCONINO	0	19	3	0	22	2.6%
GILA	0	7	1	0	8	0.9%
GRAHAM	0	2	0	0	2	0.2%
GREENLEE	0	0	0	0	0	0.0%
LA PAZ	0	1	0	0	1	0.1%
MARICOPA	1	472	76	26	575	67.3%
MOHAVE	0	34	1	1	36	4.2%
NAVAJO	0	9	1	0	10	1.2%
PIMA	0	62	8	6	76	8.9%
PINAL	0	54	5	0	59	6.9%
SANTA CRUZ	0	5	0	0	5	0.6%
YAVAPAI	0	21	3	2	26	3.0%
YUMA	0	9	1	1	11	1.3%
STATEWIDE	1	715	102	36	854	100.0%
% OF TOTAL	0.1%	83.7%	11.9%	4.2%	100.0%	

CHART 14
NUMBER OF REPORTS ASSIGNED FOR INVESTIGATION BY PRIORITY AND REPORTING PERIOD THAT RESULTED IN SUBSTANTIATION

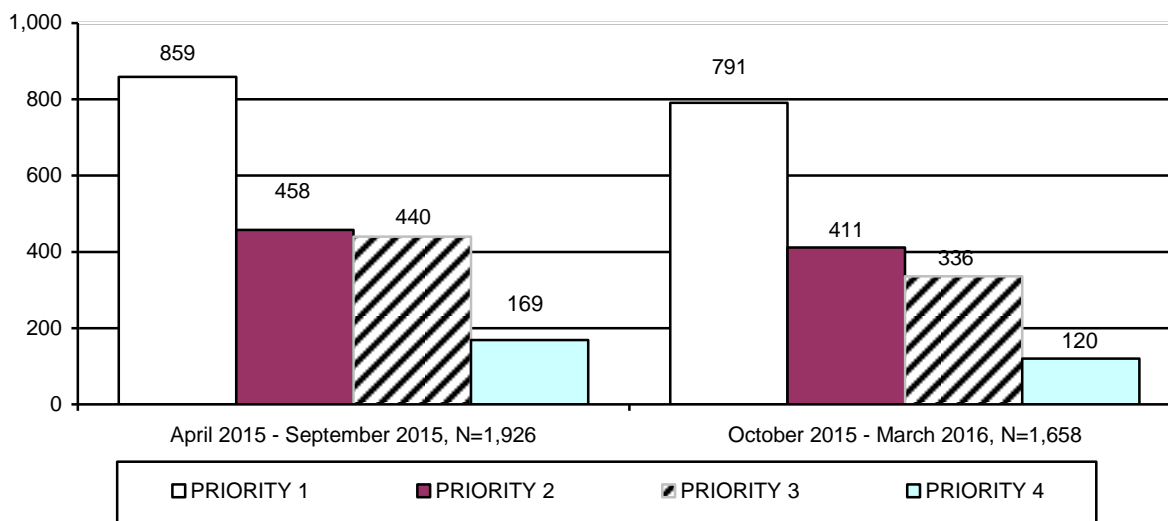


TABLE 21
NUMBER OF REPORTS ASSIGNED FOR INVESTIGATION BY PRIORITY AND COUNTY THAT RESULTED IN SUBSTANTIATION FOR PERIOD OF OCTOBER 1, 2015 THROUGH MARCH 31, 2016

COUNTY	PRIORITY 1	PRIORITY 2	PRIORITY 3	PRIORITY 4	TOTAL	% OF TOTAL
APACHE	2	2	0	0	4	0.2%
COCHISE	9	8	5	0	22	1.3%
COCONINO	9	12	6	0	27	1.6%
GILA	4	0	1	0	5	0.3%
GRAHAM	2	0	0	0	2	0.1%
GREENLEE	0	0	0	0	0	0.0%
LA PAZ	1	0	0	1	2	0.1%
MARICOPA	515	212	185	80	992	59.8%
MOHAVE	27	10	8	1	46	2.8%
NAVAJO	22	11	11	0	44	2.7%
PIMA	134	117	87	29	367	22.1%
PINAL	28	24	14	6	72	4.3%
SANTA CRUZ	4	3	1	0	8	0.5%
YAVAPAI	9	7	14	3	33	2.0%
YUMA	25	5	4	0	34	2.1%
STATEWIDE	791	411	336	120	1,658	100.0%
% OF TOTAL	47.7%	24.8%	20.3%	7.2%	100.0%	

TABLE 22
NUMBER OF REPORTS ASSIGNED FOR INVESTIGATION BY PRIORITY AND COUNTY
THAT RESULTED IN SUBSTANTIATION FOR PERIOD OF
APRIL 1, 2015 THROUGH SEPTEMBER 30, 2015

COUNTY	PRIORITY 1	PRIORITY 2	PRIORITY 3	PRIORITY 4	TOTAL	% OF TOTAL
APACHE	2	0	0	0	2	0.1%
COCHISE	5	1	1	0	7	0.3%
COCONINO	6	4	4	1	15	0.8%
GILA	7	0	0	0	7	0.3%
GRAHAM	2	0	0	0	2	0.1%
GREENLEE	0	0	0	0	0	0.0%
LA PAZ	2	2	1	1	6	0.3%
MARICOPA	573	270	255	135	1,233	64.0%
MOHAVE	18	10	7	1	36	1.9%
NAVAJO	22	5	14	3	44	2.3%
PIMA	136	104	99	11	250	18.2%
PINAL	41	42	34	11	128	6.7%
SANTA CRUZ	5	0	1	0	6	0.3%
YAVAPAI	8	5	15	2	30	1.6%
YUMA	32	15	9	4	60	3.1%
STATEWIDE	859	458	440	169	1,926	100.0%
% OF TOTAL	44.5%	23.8%	22.9%	8.8%	100.0%	

CHART 15
NUMBER OF REPORTS ASSIGNED FOR INVESTIGATION BY TYPE OF MALTREATMENT
THAT RESULTED IN SUBSTANTIATION

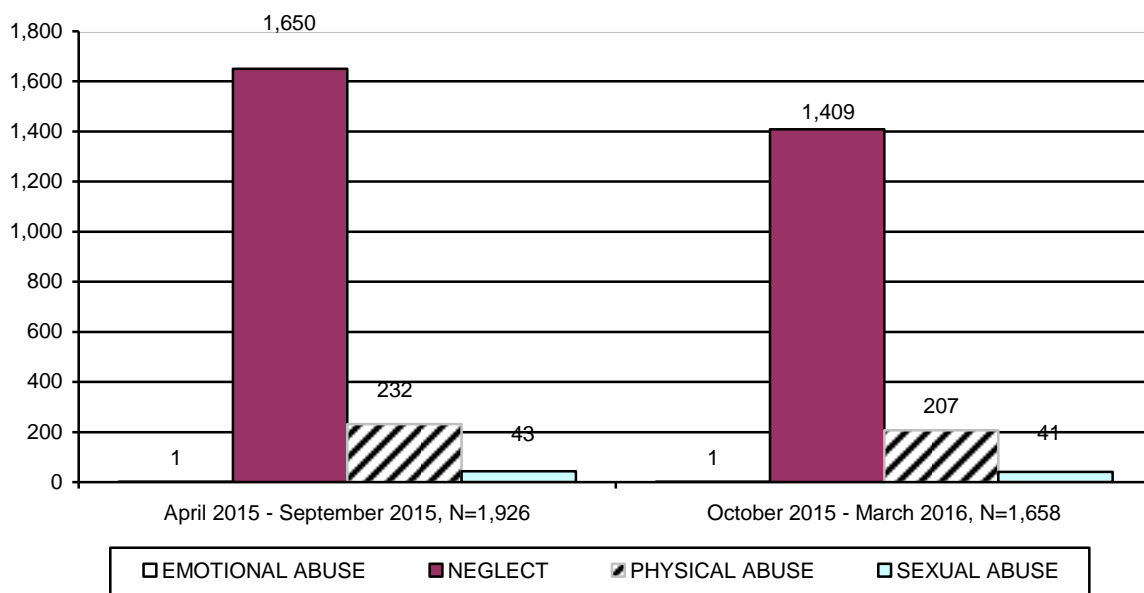


TABLE 23
NUMBER OF REPORTS ASSIGNED FOR INVESTIGATION BY TYPE OF MALTREATMENT
BY COUNTY THAT RESULTED IN SUBSTANTIATION FOR PERIOD OF
OCTOBER 1, 2015 THROUGH MARCH 31, 2016

COUNTY	EMOTIONAL ABUSE	NEGLECT	PHYSICAL ABUSE	SEXUAL ABUSE	TOTAL	% OF TOTAL
APACHE	0	4	0	0	4	0.2%
COCHISE	0	20	1	1	22	1.3%
COCONINO	0	21	3	3	27	1.6%
GILA	0	5	0	0	5	0.3%
GRAHAM	0	1	0	1	2	0.1%
GREENLEE	0	0	0	0	0	0.0%
LA PAZ	0	1	1	0	2	0.1%
MARICOPA	1	829	136	26	992	59.8%
MOHAVE	0	38	7	1	46	2.8%
NAVAJO	0	39	5	0	44	2.7%
PIMA	0	324	39	4	367	22.1%
PINAL	0	60	7	5	72	4.3%
SANTA CRUZ	0	8	0	0	8	0.5%
YAVAPAI	0	28	5	0	33	2.0%
YUMA	0	31	3	0	34	2.1%
STATEWIDE	1	1,409	207	41	1,658	100.0%
% OF TOTAL	0.1%	85.0%	12.5%	2.5%	100.0%	

TABLE 24
NUMBER OF REPORTS ASSIGNED FOR INVESTIGATION BY TYPE OF MALTREATMENT
BY COUNTY THAT RESULTED IN SUBSTANTIATION FOR PERIOD OF
APRIL 1, 2015 THROUGH SEPTEMBER 30, 2015

COUNTY	EMOTIONAL ABUSE	NEGLECT	PHYSICAL ABUSE	SEXUAL ABUSE	TOTAL	% OF TOTAL
APACHE	0	2	0	0	2	0.1%
COCHISE	0	6	1	0	7	0.4%
COCONINO	0	13	0	2	15	0.8%
GILA	0	5	2	0	7	0.4%
GRAHAM	0	2	0	0	2	0.1%
GREENLEE	0	0	0	0	0	0.0%
LA PAZ	0	6	0	0	6	0.3%
MARICOPA	0	1,061	145	27	1,233	63.9%
MOHAVE	0	32	4	0	36	1.9%
NAVAJO	1	36	6	1	44	2.3%
PIMA	0	297	48	5	350	18.1%
PINAL	0	109	15	4	128	6.7%
SANTA CRUZ	0	5	1	0	6	0.3%
YAVAPAI	0	24	3	3	30	1.6%
YUMA	0	52	7	1	60	3.1%
STATEWIDE	1	1,650	232	43	1,926	100.0%
% OF TOTAL	0.1%	85.6%	12.1%	2.2%	100.0%	

The preliminary number of investigations that resulted in an unsubstantiated finding for this reporting period was 15,466. Charts 16 and 17 display information on unsubstantiated reports classified by priority and type of maltreatment for the current and prior reporting periods. Tables 25 and 26 provide information on the unsubstantiated investigation findings classified by priority for each county in the current and prior reporting periods. Tables 27 and 28 provide information on the unsubstantiated investigation findings classified by type of maltreatment for each county in the current and prior reporting periods. These figures will change over time as investigations are completed and findings are entered.

CHART 16
NUMBER OF REPORTS ASSIGNED FOR INVESTIGATION BY PRIORITY AND REPORTING PERIOD THAT RESULTED IN UNSUBSTANTIATION

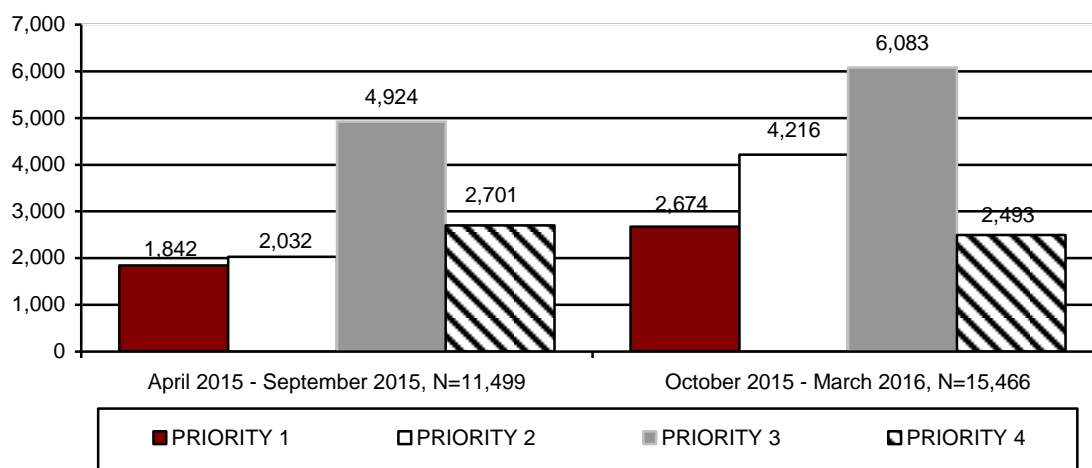


TABLE 25
NUMBER OF REPORTS ASSIGNED FOR INVESTIGATION BY PRIORITY AND COUNTY THAT RESULTED IN UNSUBSTANTIATION FOR PERIOD OF OCTOBER 1, 2015 THROUGH MARCH 31, 2016

COUNTY	PRIORITY 1	PRIORITY 2	PRIORITY 3	PRIORITY 4	TOTAL	% OF TOTAL
APACHE	21	23	32	10	86	0.6%
COCHISE	46	74	117	33	270	1.7%
COCONINO	35	63	112	31	241	1.6%
GILA	16	21	40	12	89	0.6%
GRAHAM	26	39	49	13	127	0.8%
GREENLEE	0	0	0	0	0	0.0%
LA PAZ	8	5	7	3	23	0.1%
MARICOPA	1,577	2,281	3,273	1,404	8,535	55.2%
MOHAVE	58	137	153	74	422	2.7%
NAVAJO	55	78	117	51	301	1.9%
PIMA	464	937	1,359	524	3,284	21.2%
PINAL	186	288	409	158	1,041	6.7%
SANTA CRUZ	13	20	38	32	103	0.7%
YAVAPAI	97	148	232	94	571	3.7%
YUMA	72	102	145	54	373	2.4%
STATEWIDE	2,674	4,216	6,083	2,493	15,466	100.0%
% OF TOTAL	17.3%	27.3%	39.3%	16.1%	100.0%	

TABLE 26
NUMBER OF REPORTS ASSIGNED FOR INVESTIGATION BY PRIORITY AND COUNTY
THAT RESULTED IN UNSUBSTANTIATION FOR PERIOD OF
APRIL 1, 2015 THROUGH SEPTEMBER 30, 2015

COUNTY	PRIORITY 1	PRIORITY 2	PRIORITY 3	PRIORITY 4	TOTAL	% OF TOTAL
APACHE	19	15	24	15	73	0.6%
COCHISE	17	22	47	12	98	0.9%
COCONINO	34	38	90	46	208	1.8%
GILA	9	7	15	5	36	0.3%
GRAHAM	8	13	18	13	52	0.5%
GREENLEE	0	0	0	0	0	0.0%
LA PAZ	4	8	10	6	28	0.2%
MARICOPA	1,047	1,007	2,475	1,476	6,005	52.3%
MOHAVE	62	81	151	76	370	3.2%
NAVAJO	40	57	115	85	297	2.6%
PIMA	371	503	1,354	615	2,843	24.7%
PINAL	134	139	281	184	738	6.4%
SANTA CRUZ	3	7	7	9	26	0.2%
YAVAPAI	43	76	174	85	378	3.3%
YUMA	51	59	163	74	347	3.0%
STATEWIDE	1,842	2,032	4,924	2,701	11,499	100.0%
% OF TOTAL	16.0%	17.7%	42.8%	23.5%	100.0%	

CHART 17
NUMBER OF REPORTS ASSIGNED FOR INVESTIGATION BY TYPE OF MALTREATMENT
THAT RESULTED IN UNSUBSTANTIATION BY REPORTING PERIOD

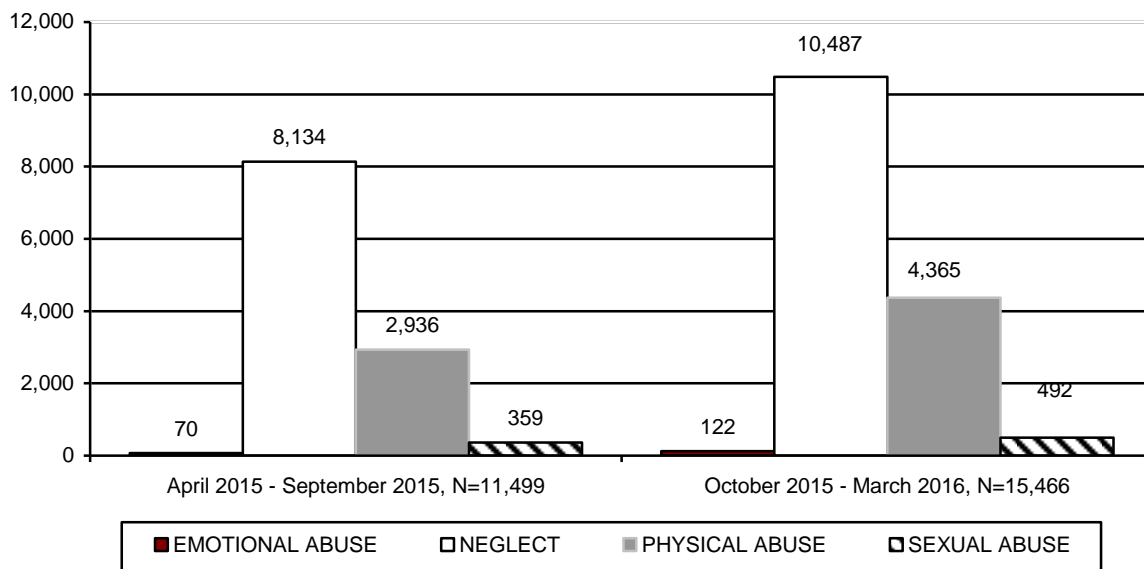


TABLE 27
NUMBER OF REPORTS ASSIGNED FOR INVESTIGATION BY TYPE OF MALTREATMENT
BY COUNTY THAT RESULTED IN UNSUBSTANTIATION FOR PERIOD OF
OCTOBER 1, 2015 THROUGH MARCH 31, 2016

COUNTY	EMOTIONAL ABUSE	NEGLECT	PHYSICAL ABUSE	SEXUAL ABUSE	TOTAL	% OF TOTAL
APACHE	0	66	15	5	86	0.6%
COCHISE	2	191	69	8	270	1.7%
COCONINO	3	175	56	7	241	1.6%
GILA	0	65	21	3	89	0.6%
GRAHAM	1	90	34	2	127	0.8%
GREENLEE	0	0	0	0	0	0.0%
LA PAZ	0	17	6	0	23	0.1%
MARICOPA	65	5,614	2,604	252	8,535	55.2%
MOHAVE	5	291	111	15	422	2.7%
NAVAJO	0	212	74	15	301	1.9%
PIMA	27	2,318	822	117	3,284	21.2%
PINAL	8	714	282	37	1,041	6.7%
SANTA CRUZ	3	62	34	4	103	0.7%
YAVAPAI	5	419	130	17	571	3.7%
YUMA	3	253	107	10	373	2.4%
STATEWIDE	122	10,487	4,365	492	15,466	100.0%
% OF TOTAL	0.8%	67.8%	28.2%	3.2%	100.0%	

TABLE 28
NUMBER OF REPORTS ASSIGNED FOR INVESTIGATION BY TYPE OF MALTREATMENT
BY COUNTY THAT RESULTED IN UNSUBSTANTIATION FOR PERIOD OF
APRIL 1, 2015 THROUGH SEPTEMBER 30, 2015

COUNTY	EMOTIONAL ABUSE	NEGLECT	PHYSICAL ABUSE	SEXUAL ABUSE	TOTAL	% OF TOTAL
APACHE	0	57	13	3	73	0.6%
COCHISE	0	74	20	4	98	0.9%
COCONINO	2	15,331	42	11	208	1.8%
GILA	0	42	4	1	36	0.3%
GRAHAM	1	0	9	0	52	0.5%
GREENLEE	0	20	0	0	0	0.0%
LA PAZ	0	4,145	8	0	28	0.2%
MARICOPA	35	262	1,633	192	6,005	52.3%
MOHAVE	0	224	94	14	370	3.2%
NAVAJO	2	2,082	55	16	297	2.6%
PIMA	23	498	684	54	2,843	24.7%
PINAL	5	498	200	35	738	6.4%
SANTA CRUZ	0	18	5	3	26	0.2%
YAVAPAI	0	278	81	19	378	3.3%
YUMA	2	250	88	7	347	3.0%
STATEWIDE	70	8,134	2,936	359	11,499	100.0%
% OF TOTAL	0.6%	70.8%	25.5%	3.1%	100.0%	

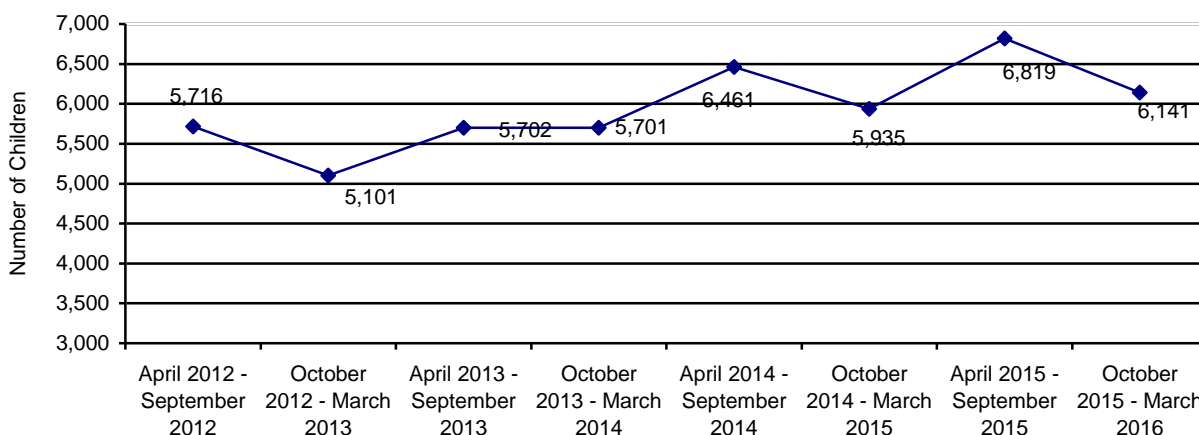
SAFE HAVEN INFANTS

Communications from providers indicate that there was 1 newborn infant delivered to Safe Haven providers during the October 2015 – March 2016 reporting period. This compares to no newborn infants being delivered to Safe Haven providers during the prior reporting period.

CHILDREN ENTERING OUT-OF-HOME CARE

During the current reporting period, 6,141 children entered care, which represents a 10.0% decrease in children entering care over the prior reporting period and a 3.5% increase over the same reporting period last year. Chart 18 displays children entering out-of-home care by reporting period. As can be seen from the chart below, the increase in children entering out-of-home care has continued since FY 2013 until this reporting period. Since FY 2013, the number of children entering out-of-home care remained high, which is a reflection of the growth in the number of reports received by the Hotline (see Chart 1 for number of reports detail).

**CHART 18
TOTAL CHILDREN ENTERING OUT-OF-HOME CARE BY REPORTING PERIOD**



CHILDREN ENTERING OUT-OF-HOME CARE – VOLUNTARY SERVICES

The number of children entering out-of-home placement through voluntary foster care agreements for the current reporting period was 107, which represents 1.7% of the children entering care this reporting period. Information on the county level distribution of voluntary placements into out-of-home care can be found in Table 29 for the current reporting period and in Table 30 for the prior reporting period.

Voluntary foster care may be provided when the parents or legal guardians of a child have requested such assistance and have signed a legally binding written agreement for the temporary placement of the child in foster care while risk factors are addressed to enable the child to live safely at home. A.R.S. § 8-806 authorizes the Department to provide voluntary foster care placement for children for a period not to exceed 90 days and no more than twice within 24 consecutive months.

TABLE 29
NUMBER OF CHILDREN ENTERING OUT-OF-HOME CARE BY COUNTY WHO ARE
VOLUNTARY PLACEMENTS FOR CHILDREN UNDER THE AGE OF EIGHTEEN FOR THE
PERIOD OF OCTOBER 1, 2015 THROUGH MARCH 31, 2016

COUNTY	NUMBER OF CHILDREN REMOVED	% OF TOTAL REMOVALS	NUMBER OF CHILDREN ENTERING OUT-OF-HOME CARE UNDER THE AGE OF EIGHTEEN WHO ARE VOLUNTARY PLACEMENTS	% OF CHILDREN ENTERING OUT-OF-HOME CARE WHO ARE VOLUNTARY PLACEMENTS
APACHE	37	0.6%	0	0.0%
COCHISE	111	1.8%	1	0.9%
COCONINO	70	1.1%	0	0.0%
GILA	34	0.6%	3	8.8%
GRAHAM	26	0.4%	0	0.0%
GREENLEE	0	0.0%	0	0.0%
LA PAZ	10	0.2%	0	0.0%
MARICOPA	3,821	62.2%	35	0.9%
MOHAVE	166	2.7%	4	2.4%
NAVAJO	47	0.8%	1	2.1%
PIMA	1,142	18.6%	56	4.9%
PINAL	351	5.7%	0	0.0%
SANTA CRUZ	14	0.2%	1	7.1%
YAVAPAI	172	2.8%	5	2.9%
YUMA	140	2.3%	1	0.7%
STATEWIDE	6,141	100.0%	107	1.7%

TABLE 30
NUMBER OF CHILDREN ENTERING OUT-OF-HOME CARE BY COUNTY WHO ARE
VOLUNTARY PLACEMENTS FOR CHILDREN UNDER THE AGE OF EIGHTEEN FOR THE
PERIOD OF APRIL 1, 2015 THROUGH SEPTEMBER 30, 2015*

COUNTY	NUMBER OF CHILDREN REMOVED	% OF TOTAL REMOVALS	NUMBER OF CHILDREN ENTERING OUT-OF-HOME CARE UNDER THE AGE OF EIGHTEEN WHO ARE VOLUNTARY PLACEMENTS	% OF CHILDREN ENTERING OUT-OF-HOME CARE WHO ARE VOLUNTARY PLACEMENTS
APACHE	21	0.3%	0	0.0%
COCHISE	85	1.3%	0	0.0%
COCONINO	86	1.3%	1	1.2%
GILA	42	0.6%	2	4.8%
GRAHAM	21	0.3%	0	0.0%
GREENLEE	0	0.0%	0	0.0%
LA PAZ	7	0.1%	0	0.0%
MARICOPA	4,271	62.6%	51	1.2%
MOHAVE	234	3.4%	13	5.6%
NAVAJO	64	0.9%	2	3.1%
PIMA	1,218	17.9%	67	5.5%
PINAL	468	6.9%	1	0.2%
SANTA CRUZ	43	0.6%	0	0.0%
YAVAPAI	147	2.2%	12	8.2%
YUMA	112	1.6%	5	4.5%
STATEWIDE	6,819	100.0%	154	2.3%

*An error in the percentage calculation was discovered and has been updated.

NUMBER OF CHILDREN ENTERING OUT-OF-HOME CARE

The total number of children entering out-of-home care (of which voluntary placements are a subset) in the current reporting period was 6,141, which represents a decrease of ten percent in the total number of children entering out-of-home care from the prior reporting period. Chart 19 displays the number of removed children, and then further differentiates new removals by providing the number with a prior removal in the past 12 months and the past 12 to 24 months. Information on the county level distribution of children entering out-of-home care can be found in Table 31 for the current period and Table 32 for the prior period.

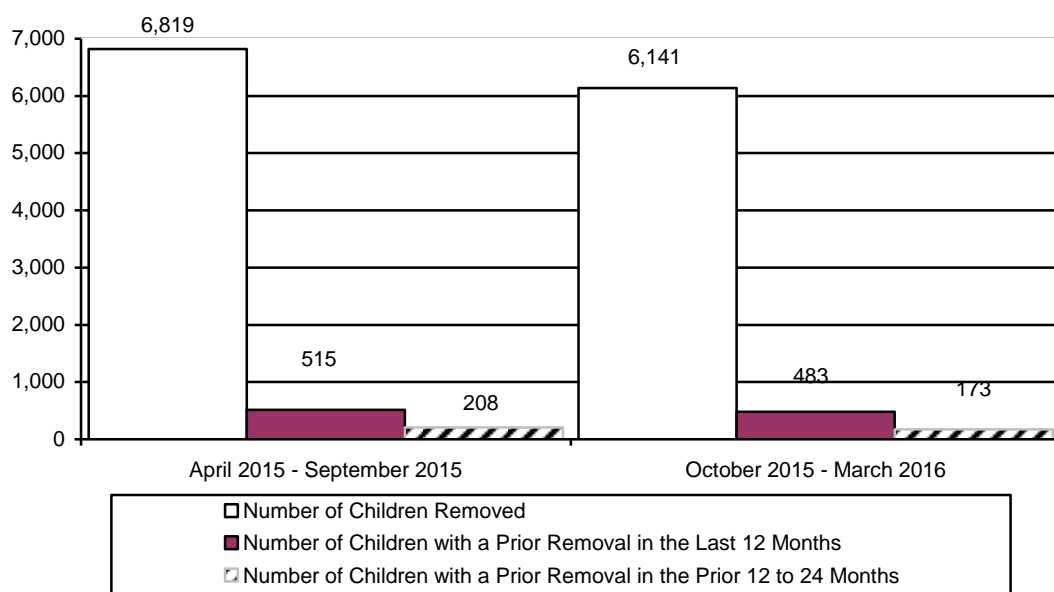
**TABLE 31
NUMBER OF CHILDREN ENTERING OUT-OF-HOME CARE BY COUNTY FOR THE
PERIOD OF OCTOBER 1, 2015 THROUGH MARCH 31, 2016**

COUNTY	NUMBER OF CHILDREN REMOVED	% OF TOTAL REMOVALS	NUMBER OF CHILDREN WITH A PRIOR REMOVAL IN THE LAST 12 MONTHS	% OF CHILDREN WITH A PRIOR REMOVAL IN THE LAST 12 MONTHS	NUMBER OF CHILDREN WITH A REMOVAL IN THE PRIOR 12 TO 24 MONTHS	% OF CHILDREN WITH A PRIOR REMOVAL IN THE PRIOR 12 TO 24 MONTHS
APACHE	37	0.6%	1	2.7%	0	0.0%
COCHISE	111	1.8%	6	5.4%	4	3.6%
COCONINO	70	1.1%	14	20.0%	4	5.7%
GILA	34	0.6%	0	0.0%	2	5.9%
GRAHAM	26	0.4%	0	0.0%	4	15.4%
GREENLEE	0	0.0%	0	0.0%	0	0.0%
LA PAZ	10	0.2%	2	20.0%	0	0.0%
MARICOPA	3,821	62.2%	294	7.7%	82	2.1%
MOHAVE	166	2.7%	7	4.2%	3	1.8%
NAVAJO	47	0.8%	3	6.4%	0	0.0%
PIMA	1,142	18.6%	110	9.6%	59	5.2%
PINAL	351	5.7%	21	6.0%	6	1.7%
SANTA CRUZ	14	0.2%	0	0.0%	0	0.0%
YAVAPAI	172	2.8%	10	5.8%	3	1.7%
YUMA	140	2.3%	15	10.7%	6	4.3%
STATEWIDE	6,141	100.0%	483	7.9%	173	2.8%

TABLE 32
NUMBER OF CHILDREN ENTERING OUT-OF-HOME CARE BY COUNTY FOR THE
PERIOD OF APRIL 1, 2015 THROUGH SEPTEMBER 30, 2015

COUNTY	NUMBER OF CHILDREN REMOVED	% OF TOTAL REMOVALS	NUMBER OF CHILDREN WITH A PRIOR REMOVAL IN THE LAST 12 MONTHS	% OF CHILDREN WITH A PRIOR REMOVAL IN THE LAST 12 MONTHS	NUMBER OF CHILDREN WITH A REMOVAL IN THE PRIOR 12 TO 24 MONTHS	% OF CHILDREN WITH A PRIOR REMOVAL IN THE PRIOR 12 TO 24 MONTHS
APACHE	21	0.3%	2	9.5%	1	4.8%
COCHISE	85	1.3%	9	10.6%	1	1.2%
COCONINO	86	1.3%	0	0.0%	0	0.0%
GILA	42	0.6%	5	11.9%	2	4.8%
GRAHAM	21	0.3%	0	0.0%	0	0.0%
GREENLEE	0	0.0%	0	0.0%	0	0.0%
LA PAZ	7	0.1%	0	0.0%	0	0.0%
MARICOPA	4,271	62.6%	305	7.1%	139	3.3%
MOHAVE	234	3.4%	17	7.3%	3	1.3%
NAVAJO	64	0.9%	2	3.1%	4	6.3%
PIMA	1,218	17.9%	125	10.3%	51	4.2%
PINAL	468	6.9%	33	7.1%	2	0.4%
SANTA CRUZ	43	0.6%	0	0.0%	0	0.0%
YAVAPAI	147	2.2%	6	4.1%	2	1.4%
YUMA	112	1.6%	11	9.8%	3	2.7%
STATEWIDE	6,819	100.0%	515	7.6%	208	3.1%

CHART 19
NUMBER OF CHILDREN ENTERING OUT-OF-HOME CARE BY REPORTING PERIOD



CHILDREN IN OUT-OF-HOME CARE

Chart 20 below shows the number of children in out-of-home care on the last day of the current and past reporting periods.

On the last day of the current reporting period, 14,963 (79.1%) children were placed in family settings either with relatives or in foster homes. Placement information for children in out-of-home care for the current and prior reporting periods can be found in Chart 24. See Table 33 for the out-of-home population organized to show the number of children, grouped by age, in each placement type for the current reporting period.

For information on the age distribution of children in out-of-home care, see Chart 24, which displays this information for the current and prior reporting periods. The ethnicity of children in out-of-home care for the current and prior reporting periods is displayed in Chart 25.

**CHART 20
NUMBER OF CHILDREN IN OUT-OF-HOME CARE ON THE LAST DAY OF THE
REPORTING PERIOD BY REPORTING PERIOD**

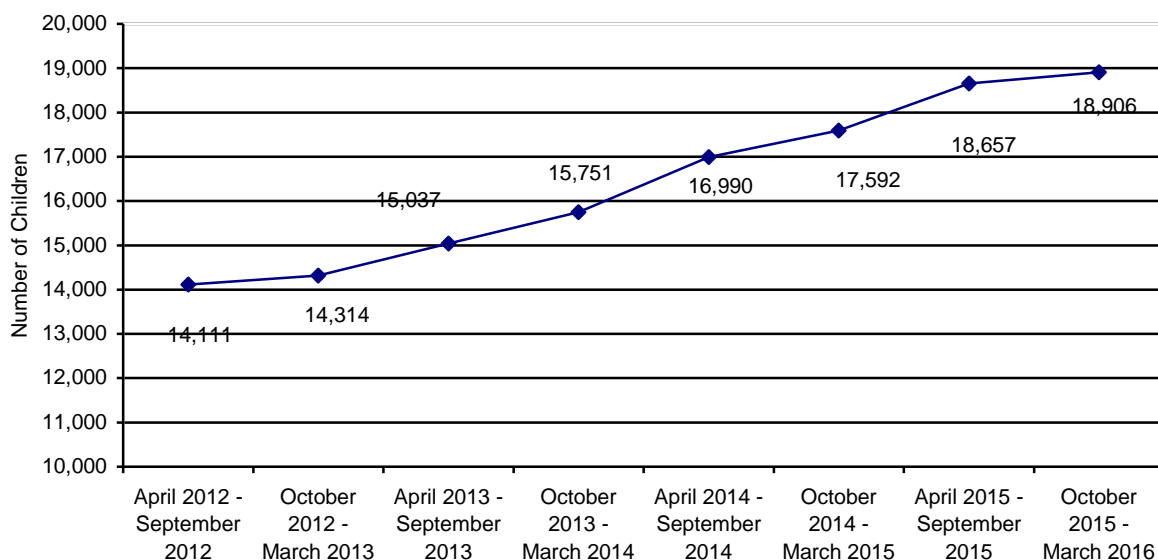


CHART 21
THE NUMBER OF CHILDREN IN OUT-OF-HOME CARE BY AGE

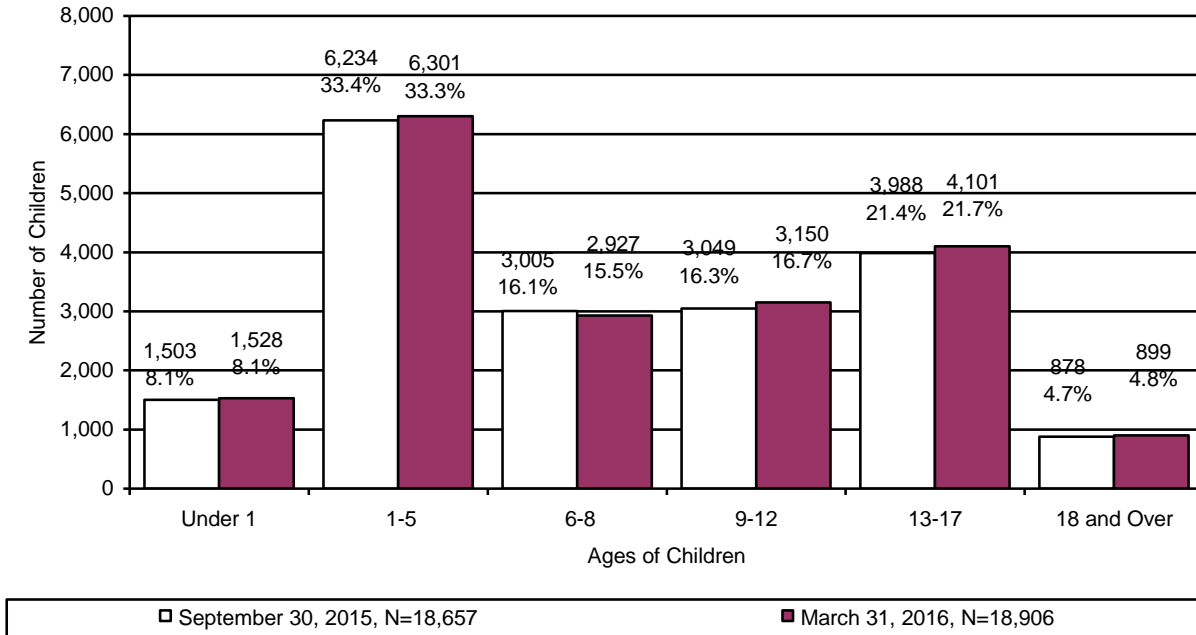
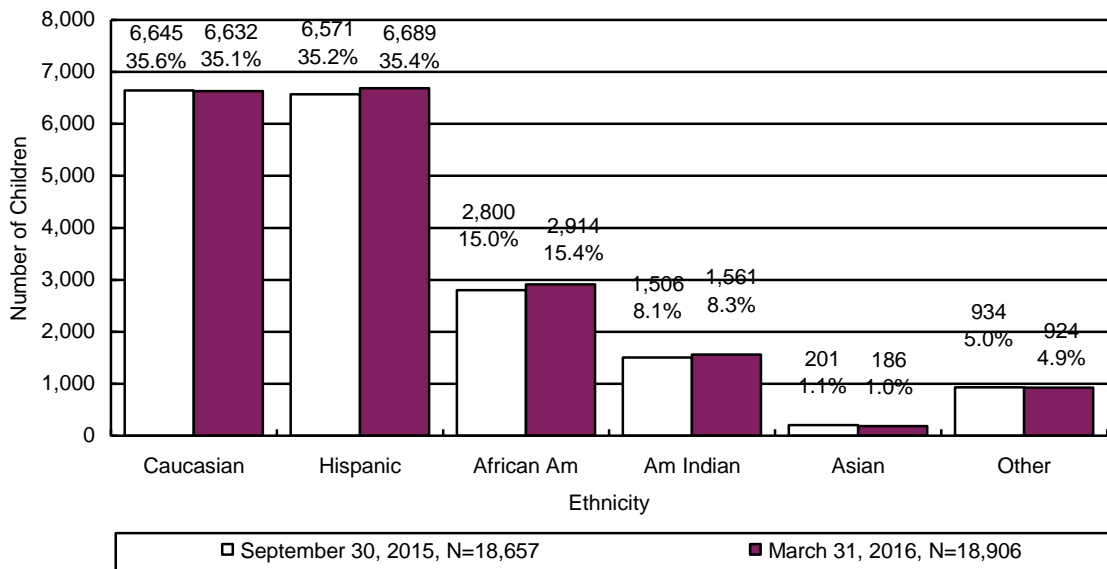


CHART 22
THE NUMBER OF CHILDREN IN OUT-OF-HOME CARE BY ETHNICITY



For 53.8% of the children in out-of-home care, family reunification remains the primary case plan goal. See Chart 23 for additional detail on the case plan goals of children in out-of-home care.

CHART 23
THE NUMBER OF CHILDREN IN OUT-OF-HOME CARE BY CASE PLAN GOAL

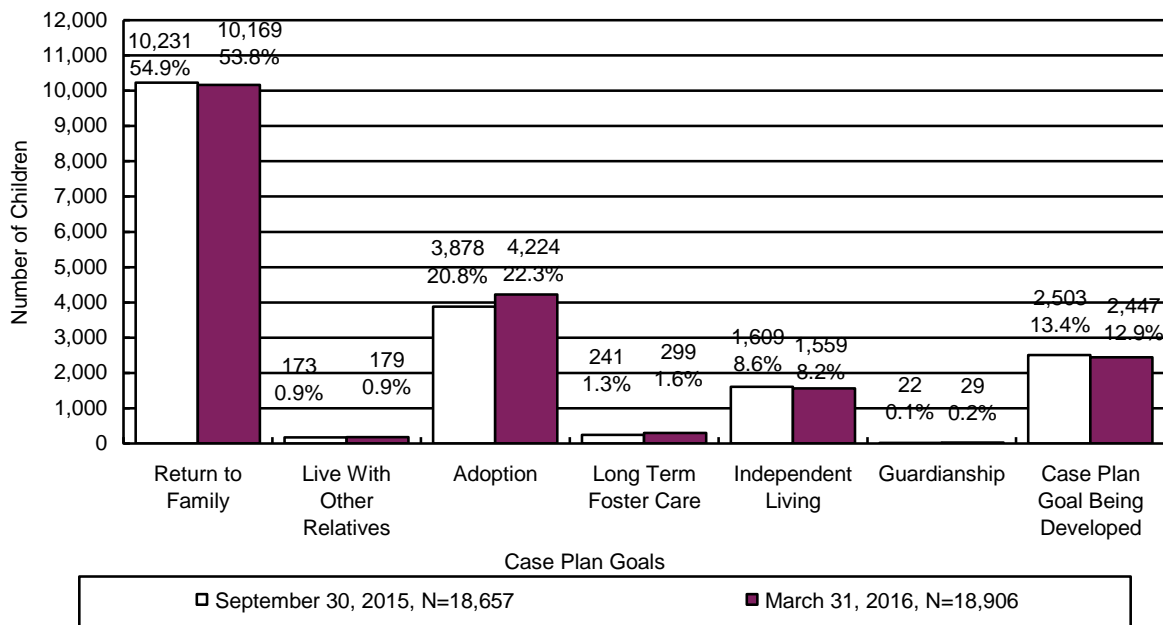
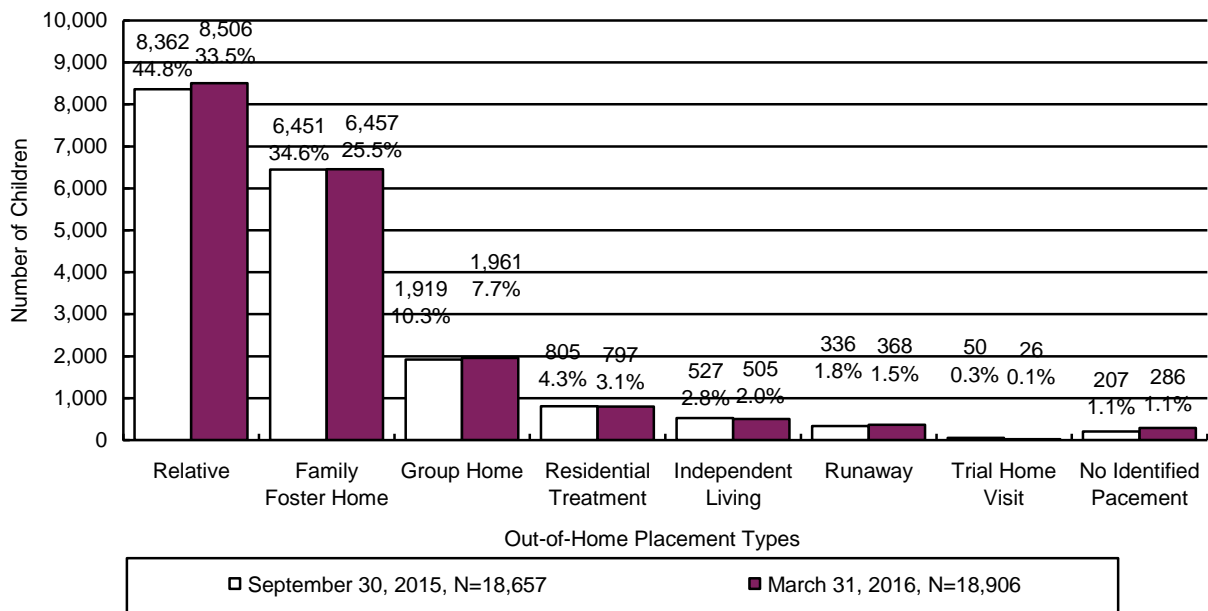


CHART 24
THE NUMBER OF CHILDREN IN OUT-OF-HOME CARE BY PLACEMENT TYPE⁴



⁴ In every reporting cycle DCS has children who, in the CHILDS database, do not have a placement identified when the data extract has run. It has been the historical practice of the Department to proportionally allocate the unidentified children across the placement types. The Department will develop strategies to minimize the need for this allocation in future reports.

**TABLE 33
THE NUMBER OF CHILDREN IN OUT-OF-HOME CARE BY PLACEMENT TYPE AND AGE**

	RELATIVE	FAMILY FOSTER	GROUP HOME	RESIDENTIAL TREATMENT ⁵	INDEPENDENT LIVING	RUNAWAY / ABSCONDED ⁶	TRIAL HOME VISIT	NO IDENTIFIED PLACEMENT	TOTAL	% OF TOTAL
UNDER 1	699	796	2	13	0	4	0	14	1,528	8.1%
1	830	780	7	14	0	2	2	9	1,644	8.7%
2	712	595	9	19	0	3	1	7	1,346	7.1%
3	656	517	12	24	0	3	1	10	1,223	6.5%
4	568	440	24	20	0	3	0	7	1,062	5.6%
5	573	391	28	22	0	1	2	9	1,026	5.4%
6	529	337	39	19	0	3	2	6	935	4.9%
7	532	396	70	20	0	0	0	13	1,031	5.5%
8	541	308	82	17	0	3	3	7	961	5.1%
9	475	310	98	20	0	0	1	9	913	4.8%
10	438	267	113	12	0	2	3	11	846	4.5%
11	361	210	111	33	0	2	0	7	724	3.8%
12	294	199	130	28	0	4	2	10	667	3.5%
13	290	157	162	39	0	7	1	12	668	3.5%
14	270	162	199	69	0	20	0	12	732	3.9%
15	256	161	235	94	0	51	2	16	815	4.3%
16	228	180	252	115	0	79	2	26	882	4.7%
17	208	178	290	116	3	165	3	41	1,004	5.3%
18 AND OLDER	46	73	98	103	502	16	1	60	899	4.8%
TOTAL	8,506	6,457	1,961	797	505	368	26	286	18,906	100.0%
% OF TOTAL	45.0%	45.0%	10.4%	4.2%	2.7%	1.9%	0.1%	1.5%	100.0%	

⁵ This category includes shelter, detention, and hospital placement types.

⁶ This category includes children whose parents absconded with the child(ren) during this reporting period.

During the reporting period 974 children remained in a shelter or receiving home for more than 21 consecutive days. Chart 25 displays children by age grouping who remained in shelter more than 21 days for the current reporting period.

CHART 25
NUMBER AND PERCENTAGE OF CHILDREN IN SHELTER OR RECEIVING HOMES FOR MORE THAN 21 CONSECUTIVE DAYS BY AGE OF CHILD⁷

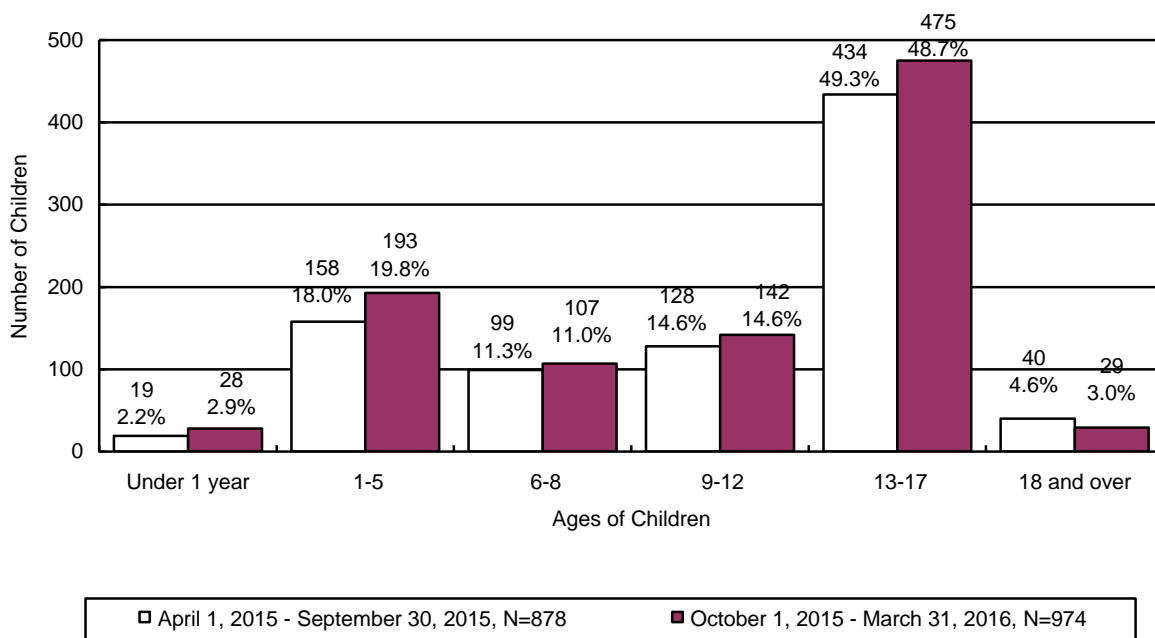
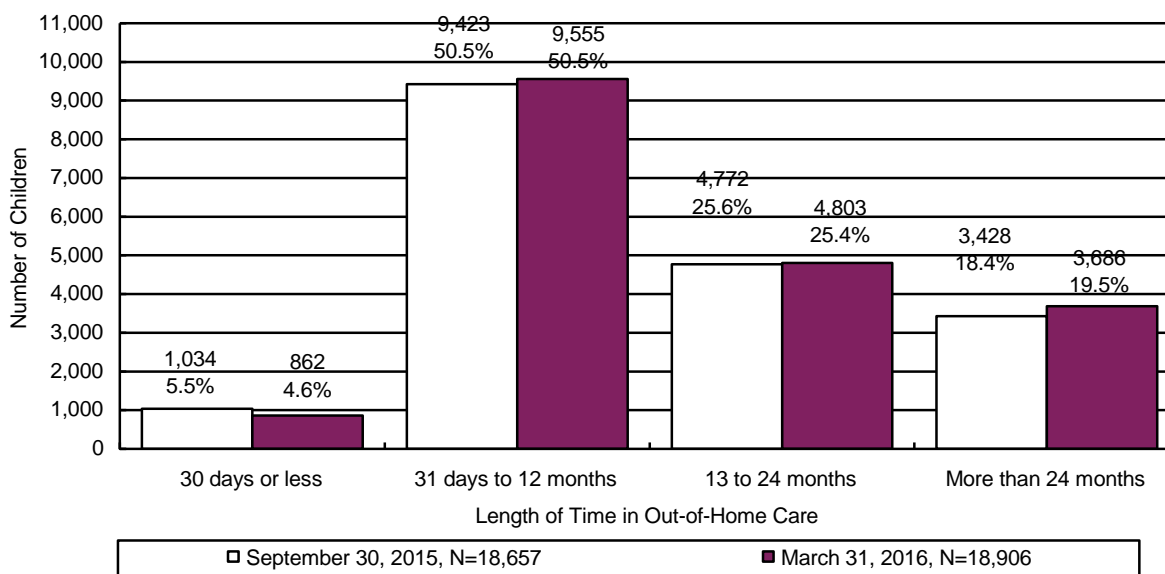


CHART 26
THE NUMBER OF CHILDREN IN OUT-OF-HOME CARE BY LENGTH OF TIME IN CARE



⁷ The chart displays children who spent more than 21 days in a shelter during the period. This number differs from the other out-of-home charts as they display children in out-of-home care on the last day of the reporting period.

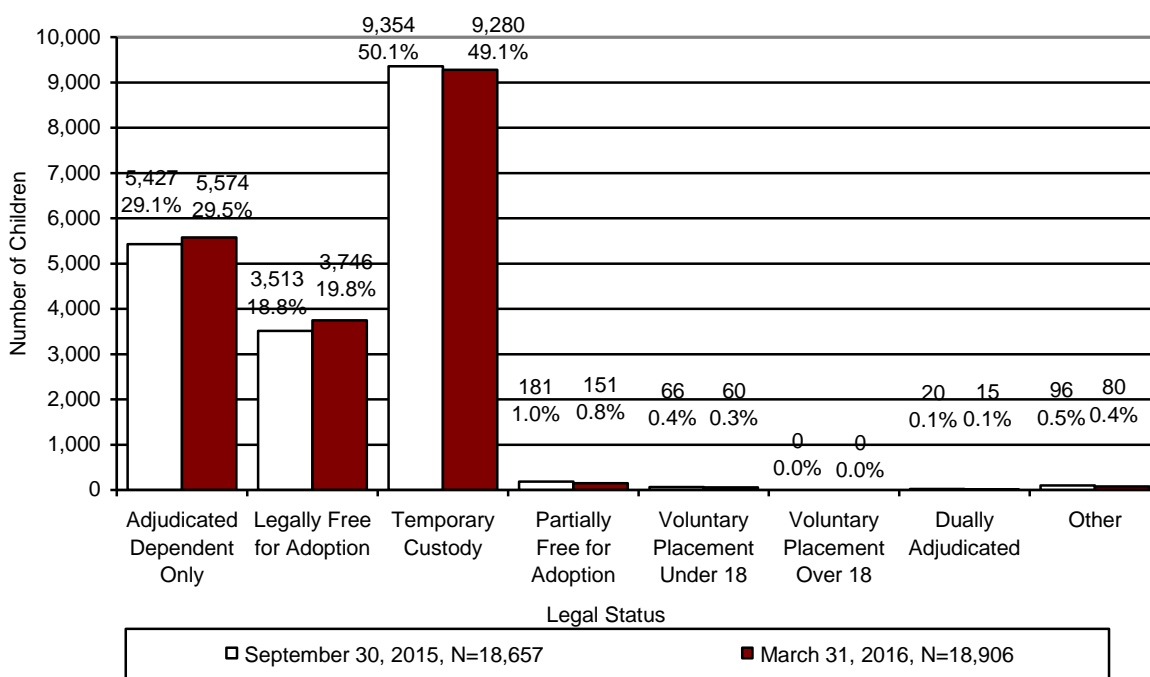
Information on the number of placements in terms of the average, median, and range for children in out-of-home care on the last day of the reporting period is shown in Table 34.

**TABLE 34
PLACEMENT INFORMATION FOR CHILDREN IN
OUT-OF-HOME CARE ON MARCH 31, 2016**

	Placements
Average	2.4
Median	2.0
Range Minimum	1
Range Maximum	61 ⁸

Chart 27 displays the legal status of the children in out-of-home care for the current and prior reporting periods. As is shown by the graph, the vast majority of children in out-of-home care fall into one of three legal statuses – adjudicated dependent, legally free for adoption, and children in the Department’s temporary custody.

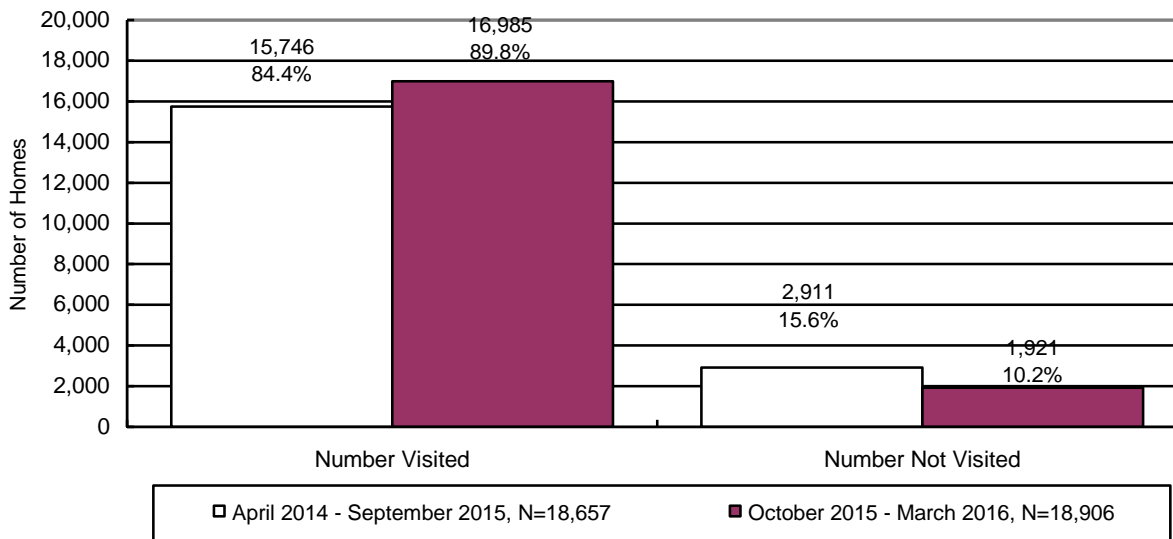
**CHART 27
CHILDREN IN OUT-OF-HOME CARE BY LEGAL STATUS**



⁸ Some children are so impacted by the severity of the abuse they have suffered, that they become unable to form meaningful relationships or to respond to services. These children tend to go through multiple placements with numerous individuals and agencies.

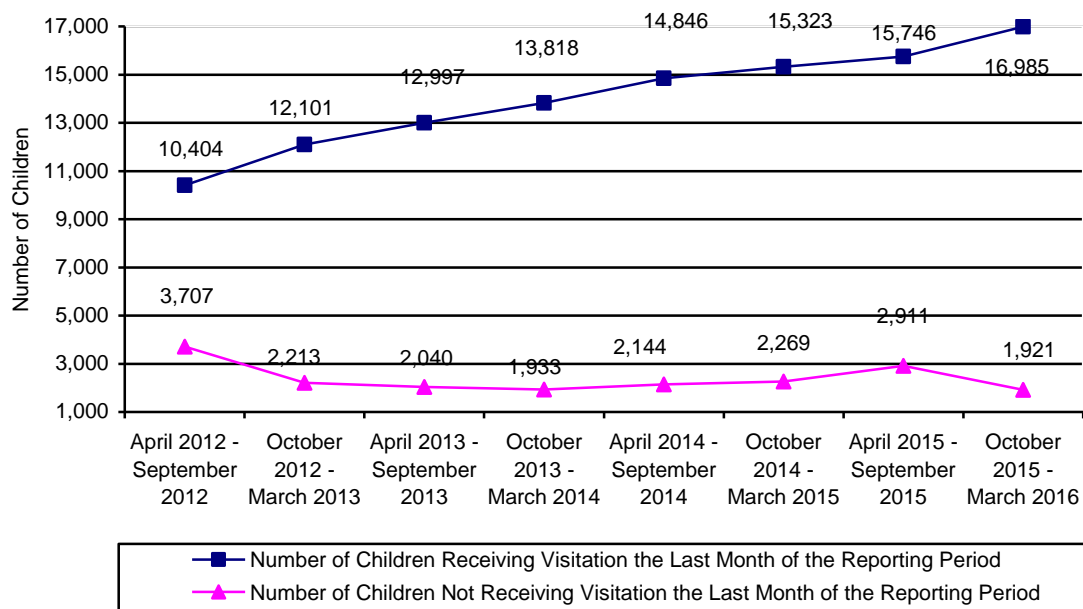
At the end of the reporting period there were 18,906 children in out-of-home care who required visitation. Of these children, visitation was documented in the automated system for 16,985 children.

CHART 28
THE NUMBER AND PERCENTAGE OF CHILDREN WHO RECEIVED THE REQUIRED VISITATION



Department policy requires specialists to have face-to-face contact with all parents at least once a month, including any alleged parents and parents residing outside of the child’s home where the case plan goal is family reunification. During the current reporting period, there were 5,137 parents who had a child with the case plan goal of reunification. Of those parents requiring visitation, 2,570 (50.0%) received the required visitation. This number does not reflect attempted visitation where contact with the parent(s) did not take place.

CHART 29
NUMBER OF CHILDREN RECEIVING AND NOT RECEIVING VISITATION BY REPORTING PERIOD



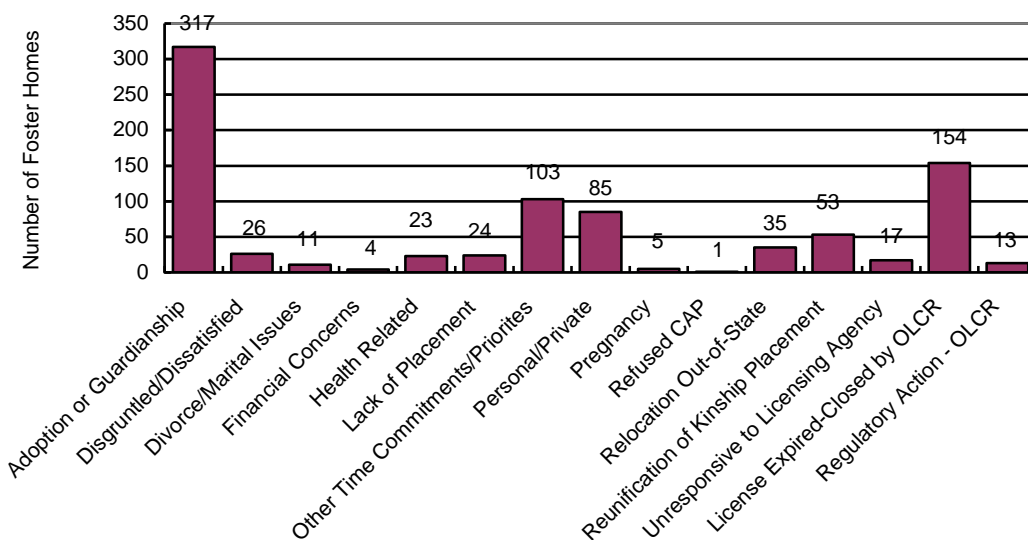
FOSTER HOME LICENSING, CLOSURES, & VISITATION

As of March 31, 2016 there were 4,681⁹ foster homes licensed for a total capacity of 10,337 spaces. Of the spaces, 2,885 are reported by contractors to be unavailable for placements. Reasons for this include, but are not limited to, licensing restrictions on age, bed holds for youth in treatment or hospitalization, foster parents' need for temporary reprieve from placements and corrective action plans.

Licensed foster homes include family foster homes, professional family foster homes (HCTC homes), respite foster homes, receiving foster homes, and developmentally disabled homes with DCS children placed in them. Foster home licenses specify the age range, gender and maximum number of children that can be placed in a home. Foster parents, in consultation with the licensing worker, decide the type of physical, behavioral, and psychological needs of children they can effectively parent based upon their own skill level, experiences, and desires.

During the current reporting period, 882 new homes were licensed to provide foster care and 871 homes left the system. This compares to 774 new homes being licensed and 767 homes leaving the system during the prior reporting period. The following chart gives the reasons for foster home closures for the current reporting period.

**CHART 30
REASON FOR FOSTER HOME CLOSURE FOR THE PERIOD OF
OCTOBER 1, 2015 THROUGH MARCH 31, 2016**

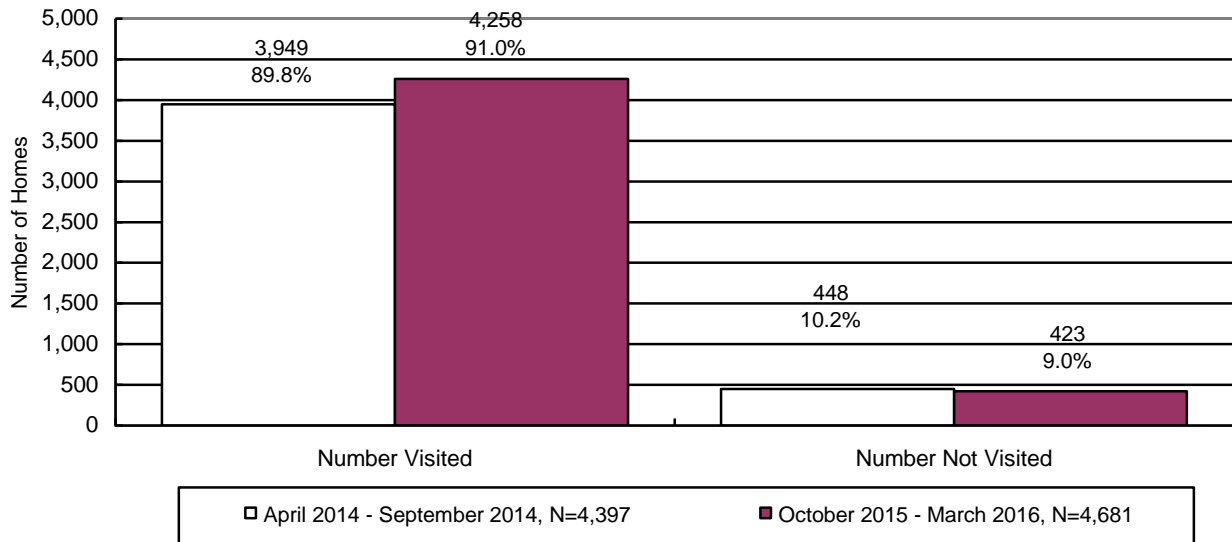


N=871

⁹ The number of homes cited in this report differs from the number cited by the Office of Licensing, Certification & Regulation (OLCR) due to the fact that the DCS utilizes both foster homes managed through HRSS contracts as well as homes that are licensed for developmental disabilities, licensed by the tribes, etc.

Chart 31 displays the number of foster homes that received the required visitation in the current and prior reporting periods. The Department believes that more foster homes received the required visitation than is indicated in the chart below. The under-reporting of foster home visitation is attributable to the lack of automation being used in reporting the foster home visitation process. The Department recognizes this as a problem and is working to correct this issue.

CHART 31
THE NUMBER AND PERCENTAGE OF FOSTER HOMES WHO RECEIVED THE REQUIRED VISITATION*



*Required visitations to foster homes, for license monitoring purposes, are performed by licensing agency specialist.

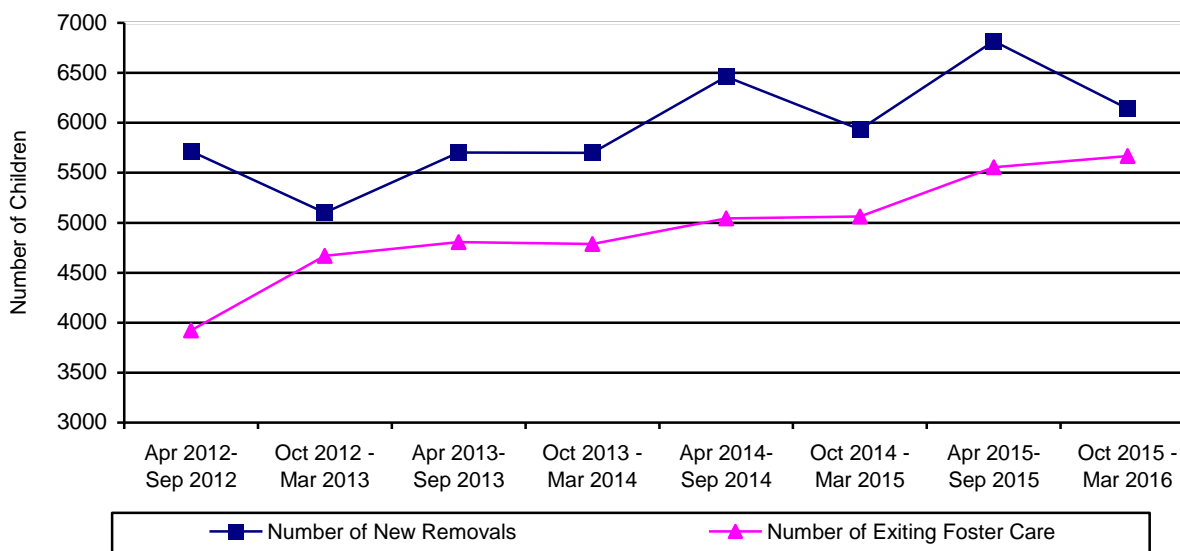
CHILDREN EXITING OUT-OF HOME CARE

Table 35 below shows the history of the number of children who left the custody of the Department.

**TABLE 35
CHILDREN EXITING OUT-OF-HOME CARE BY PERIOD**

REPORTING PERIOD	NUMBER OF CHILDREN DISCHARGED	% CHANGE OVER PRIOR PERIOD
APRIL 2012 – SEPTEMBER 2012	3,923	+2.5%
OCTOBER 2012 – MARCH 2013	4,668	+19.0%
APRIL 2013 – SEPTEMBER 2013	4,805	+2.9%
OCTOBER 2013 – MARCH 2014	4,786	-0.4%
APRIL 2014 – SEPTEMBER 2014	5,042	+5.3%
OCTOBER 2014 – MARCH 2015	5,063	+0.4%
APRIL 2015 – SEPTEMBER 2015	5,555	+10.2%
OCTOBER 2015 – MARCH 2016	5,668	+2.0%

**CHART 32
CHILDREN ENTERING AND EXITING OUT-OF-HOME CARE BY REPORTING PERIOD**



The following nine tables depict the children who exited out-of-home care by reason. The tables display the following information: reasons the child left custody, their age, their ethnicity, the number of placements each child had, and the length of time in out-of-home care.

**TABLE 36
TOTAL NUMBER OF CHILDREN EXITING DCS CUSTODY FOR THE END OF THE
REPORTING PERIOD ENDING ON MARCH 31, 2016**

By Age	Number	Percentage
Under 1	278	4.9%
Ages 1 to 5	2,109	37.2%
Ages 6 to 8	943	16.7%
Ages 9 to 12	917	16.2%
Ages 13 to 17	976	17.2%
18 and Over	445	7.8%
Total	5,668	100.0%
Ethnicity	Number	Percentage
Caucasian	2,066	36.5%
Hispanic	2,011	35.5%
African American	792	14.0%
American Indian	512	9.0%
Asian	76	.5%
Other	211	3.7%
Total	5,668	100.0%
By Number of Placements	Number	Percentage
One	3,010	53.1%
Two	1,283	22.6%
Three	658	11.6%
Four	324	5.7%
Five	152	2.7%
More than Five	241	4.3%
Total	5,668	100.0%
By Length of Time in Care	Number	Percentage
Less than 30 Days	791	14.0%
31 Days to 12 Months	1,912	33.7%
13 to 24 Months	1,676	29.6%
More than 24 Months	1,289	22.7%
Total	5,668	100.0%

	Average	Median
By Age	8.34	7.35
By Number of Placements	2.09	1.00
By Months of Time in Care	16.33	13.98

**TABLE 37
NUMBER AND PERCENTAGE OF CHILDREN EXITING DCS CUSTODY
FOR REASON OF “REUNIFICATION WITH PARENTS OR PRIMARY CARETAKER” FOR
THE REPORTING PERIOD ENDING MARCH 31, 2016**

By Age	Number	Percentage
Under 1	225	7.4%
Ages 1 to 5	1,137	37.4%
Ages 6 to 8	530	17.5%
Ages 9 to 12	508	16.7%
Ages 13 to 17	632	20.8%
18 and Over	4	.1%
Total	3,036	100.0%
Ethnicity	Number	Percentage
Caucasian	1,072	35.3%
Hispanic	1,060	34.9%
African American	452	14.9%
American Indian	237	7.8%
Asian	51	1.7%
Other	164	5.4%
Total	3,036	100.0%
By Number of Placements	Number	Percentage
One	1,737	57.3%
Two	716	23.6%
Three	323	10.6%
Four	147	4.8%
Five	56	1.8%
More than Five	55	1.8%
Total	3,036	100.0%
By Length of Time in Care	Number	Percentage
Less than 30 Days	692	22.8%
31 Days to 12 Months	1,508	49.7%
13 to 24 Months	655	21.6%
More than 24 Months	181	6.0%
Total	3,036	100.0%

	Average	Median
By Age	7.64	6.79
By Number of Placements	1.80	1.00
By Months of Time in Care	9.18	7.71

**TABLE 38
NUMBER AND PERCENTAGE OF CHILDREN EXITING DCS CUSTODY
FOR REASON OF “LIVING WITH OTHER RELATIVES” FOR THE REPORTING PERIOD
ENDING MARCH 31, 2016**

By Age	Number	Percentage
Under 1	3	9.1%
Ages 1 to 5	6	18.2%
Ages 6 to 8	5	15.2%
Ages 9 to 12	6	18.2%
Ages 13 to 17	12	36.4%
18 and Over	1	3.0%
Total	33	100.0%
Ethnicity	Number	Percentage
Caucasian	11	33.3%
Hispanic	12	36.4%
African American	0	0.0%
American Indian	5	15.2%
Asian	0	0.0%
Other	5	15.2%
Total	33	100.0%
By Number of Placements	Number	Percentage
One	26	78.8%
Two	1	3.0%
Three	4	12.1%
Four	2	6.1%
Five	0	0.0%
More than Five	0	0.0%
Total	33	100.0%
By Length of Time in Care	Number	Percentage
Less than 30 Days	16	48.5%
31 Days to 12 Months	13	39.4%
13 to 24 Months	2	6.1%
More than 24 Months	2	6.1%
Total	33	100.0%

	Average	Median
By Age	10.17	11.89
By Number of Placements	1.45	1.00
By Months of Time in Care	4.86	2.04

**TABLE 39
NUMBER AND PERCENTAGE OF CHILDREN EXITING DCS
CUSTODY FOR REASON OF “ADOPTION” FOR THE REPORTING PERIOD
ENDING MARCH 31, 2016**

By Age	Number	Percentage
Under 1	28	1.6%
Ages 1 to 5	888	51.4%
Ages 6 to 8	330	19.1%
Ages 9 to 12	313	18.1%
Ages 13 to 17	165	9.6%
18 and Over	3	.2%
Total	1,727	100.0%
Ethnicity	Number	Percentage
Caucasian	663	38.4%
Hispanic	679	39.3%
African American	215	12.4%
American Indian	131	7.6%
Asian	17	.10%
Other	22	1.3%
Total	1,727	100.0%
By Number of Placements	Number	Percentage
One	850	49.2%
Two	424	24.6%
Three	230	13.3%
Four	122	7.1%
Five	49	2.8%
More than Five	52	3.0%
Total	1,727	100.0%
By Length of Time in Care	Number	Percentage
Less than 30 Days	0	0.0%
31 Days to 12 Months	122	7.1%
13 to 24 Months	791	45.8%
More than 24 Months	814	47.1%
Total	1,727	100.0%

	Average	Median
By Age	6.38	5.45
By Number of Placements	2.03	2.00
By Months of Time in Care	25.26	23.49

**TABLE 40
NUMBER AND PERCENTAGE OF CHILDREN EXITING DCS CUSTODY
FOR REASON OF “GUARDIANSHIP” FOR THE REPORTING PERIOD
ENDING MARCH 31, 2016**

By Age	Number	Percentage
Under 1	9	2.8%
Ages 1 to 5	43	13.3%
Ages 6 to 8	57	17.6%
Ages 9 to 12	80	24.8%
Ages 13 to 17	133	41.2%
18 and Over	1	.3%
Total	323	100.0%
Ethnicity	Number	Percentage
Caucasian	116	35.9%
Hispanic	114	35.3%
African American	38	11.8%
American Indian	46	14.2%
Asian	1	.3%
Other	8	2.5%
Total	323	100.0%
By Number of Placements	Number	Percentage
One	209	64.7%
Two	58	18.0%
Three	31	9.6%
Four	13	4.0%
Five	5	1.5%
More than Five	7	2.2%
Total	323	100.0%
By Length of Time in Care	Number	Percentage
Less than 30 Days	42	13.0%
31 Days to 12 Months	105	32.5%
13 to 24 Months	133	41.2%
More than 24 Months	43	13.3%
Total	323	100.0%

	Average	Median
By Age	11.00	11.76
By Number of Placements	1.69	1.00
By Months of Time in Care	14.62	13.98

**TABLE 41
NUMBER AND PERCENTAGE OF CHILDREN EXITING DCS CUSTODY
FOR REASONS OF “REACHING AGE OF MAJORITY” FOR THE REPORTING PERIOD
ENDING MARCH 31, 2016**

By Age	Number	Percentage
Under 1	0	0.0%
Ages 1 to 5	0	0.0%
Ages 6 to 8	0	0.0%
Ages 9 to 12	0	0.0%
Ages 13 to 17	0	0.0%
18 and Over	432	100.0%
Total	432	100.0%
Ethnicity	Number	Percentage
Caucasian	177	41.0%
Hispanic	133	30.8%
African American	76	17.6%
American Indian	35	8.1%
Asian	7	.7%
Other	4	.9%
Total	432	100.0%
By Number of Placements	Number	Percentage
One	117	27.1%
Two	64	14.8%
Three	58	13.4%
Four	33	7.6%
Five	38	8.8%
More than Five	122	28.2%
Total	432	100.0%
By Length of Time in Care	Number	Percentage
Less than 30 Days	3	.7%
31 Days to 12 Months	102	23.6%
13 to 24 Months	88	20.4%
More than 24 Months	239	55.3%
Total	432	100.0%

	Average	Median
By Age	18.84	18.23
By Number of Placements	4.74	3.00
By Months of Time in Care	35.19	29.51

**TABLE 42
NUMBER AND PERCENTAGE OF CHILDREN EXITING DCS CUSTODY
FOR REASON OF “TRANSFER TO ANOTHER AGENCY” FOR THE REPORTING PERIOD
ENDING MARCH 31, 2016**

By Age	Number	Percentage
Under 1	10	11.9%
Ages 1 to 5	33	39.3%
Ages 6 to 8	21	25.0%
Ages 9 to 12	10	11.9%
Ages 13 to 17	10	11.9%
18 and Over	0	0.0%
Total	84	100.0%
Ethnicity	Number	Percentage
Caucasian	13	15.5
Hispanic	7	8.3
African American	4	4.8
American Indian	54	64.3
Asian	0	0.0%
Other	6	7.1
Total	84	100.0%
By Number of Placements	Number	Percentage
One	47	56.0%
Two	17	20.2%
Three	10	11.9%
Four	4	4.8%
Five	4	4.8%
More than Five	2	2.45
Total	84	100.0%
By Length of Time in Care	Number	Percentage
Less than 30 Days	30	35.7%
31 Days to 12 Months	46	54.8%
13 to 24 Months	4	4.8%
More than 24 Months	4	4.8%
Total	84	100.0%

	Average	Median
By Age	6.37	5.95
By Number of Placements	2.26	1.00
By Months of Time in Care	7.18	3.52

**TABLE 43
NUMBER AND PERCENTAGE OF CHILDREN EXITING DCS CUSTODY
FOR REASON OF “RUNAWAY” FOR THE REPORTING PERIOD
ENDING MARCH 31, 2016**

By Age	Number	Percentage
Under 1	0	0.0%
Ages 1 to 5	0	0.0%
Ages 6 to 8	0	0.0%
Ages 9 to 12	0	0.0%
Ages 13 to 17	18	72.0%
18 and Over	7	28.0%
Total	25	100.0%
Ethnicity	Number	Percentage
Caucasian	12	48.0%
Hispanic	3	12.0%
African American	6	24.0%
American Indian	3	12.0%
Asian	0	0.0%
Other	1	4.0%
Total	25	100.0%
By Number of Placements	Number	Percentage
One	17	68.0%
Two	2	8.0%
Three	1	4.0%
Four	2	8.0%
Five	0	0.0%
More than Five	3	12.0%
Total	25	100.0%
By Length of Time in Care	Number	Percentage
Less than 30 Days	7	28.0%
31 Days to 12 Months	12	48.0%
13 to 24 Months	2	8.0%
More than 24 Months	4	16.0%
Total	25	100.0%

	Average	Median
By Age	17.13	17.26
By Number of Placements	2.28	1.00
By Months of Time in Care	9.66	6.58

TABLE 44
NUMBER AND PERCENTAGE OF CHILDREN EXITING DCS CUSTODY
FOR REASON OF “DEATH OF CHILD” FOR THE REPORTING PERIOD ENDING
MARCH 31, 2016

By Age	Number	Percentage
Under 1	3	37.5%
Ages 1 to 5	2	25.0%
Ages 6 to 8	0	0.0%
Ages 9 to 12	0	0.0%
Ages 13 to 17	2	25.0%
18 and Over	1	12.5%
Total	8	100.0%
Ethnicity	Number	Percentage
Caucasian	2	25.0%
Hispanic	3	37.5%
African American	1	12.5%
American Indian	1	12.5%
Asian	0	0.0%
Other	1	12.5%
Total	8	100.0%
By Number of Placements	Number	Percentage
One	5	62.5%
Two	1	12.5%
Three	1	12.5%
Four	1	12.5%
Five	0	0.0%
More than Five	0	0.0%
Total	8	100.0%
By Length of Time in Care	Number	Percentage
Less than 30 Days	1	12.5%
31 Days to 12 Months	4	50.0%
13 to 24 Months	1	12.5%
More than 24 Months	2	25.0%
Total	8	100.0%

	Average	Median
By Age	7.10	1.68
By Number of Placements	1.75	1.00
By Months of Time in Care	19.46	6.56

**TABLE 45
CHILDREN EXITING CARE FOR REASON OF DEATH BY CAUSE OF DEATH,
PLACEMENT TYPE AT TIME OF DEATH, AND COUNTY**

COUNTY	CAUSE OF DEATH	TYPE OF PLACEMENT AT TIME OF DEATH
Maricopa	Asphyxiation	Unlicensed Relative Foster Care
Maricopa	Complications from Medical Condition	Group Home
Pinal	Medical Condition	Unlicensed Relative Foster Care
Pima	Blunt force trauma	Unlicensed Relative Foster Care
Maricopa	Undetermined by OME	Family Foster Care
Pima	Undetermined by OME	Family Foster Care
Maricopa	Medical Condition	Hospital

**TABLE 46
NUMBER OF CHILDREN IN AN OPEN CASE WHO DIED AS A RESULT OF ALLEGED
ABUSE AS CATEGORIZED BY THE CUSTODIAL RELATIONSHIP AND COUNTY FOR THE
PERIOD OCTOBER 1, 2015 THROUGH MARCH 31, 2016**

COUNTY	BIOLOGICAL PARENT(S)	OTHER FAMILY MEMBER	ADOPTIVE PARENT(S)	FOSTER CARE PARENT(S)	OTHER OUT-OF-HOME CARE PROVIDER	TOTAL	% OF TOTAL
APACHE	0	0	0	0	0	0	0.0%
COCHISE	0	0	0	0	0	0	0.0%
COCONINO	0	0	0	0	0	0	0.0%
GILA	0	0	0	0	0	0	0.0%
GRAHAM	0	0	0	0	0	0	0.0%
GREENLEE	0	0	0	0	0	0	0.0%
LA PAZ	0	0	0	0	0	0	0.0%
MARICOPA	2	0	0	0	0	2	100.0%
MOHAVE	0	0	0	0	0	0	0.0%
NAVAJO	0	0	0	0	0	0	0.0%
PIMA	0	0	0	0	0	0	0.0%
PINAL	0	0	0	0	0	0	0.0%
SANTA CRUZ	0	0	0	0	0	0	0.0%
YAVAPAI	0	0	0	0	0	0	0.0%
YUMA	0	0	0	0	0	0	0.0%
STATEWIDE	2	0	0	0	0	2	100.0%
% OF TOTAL	100.0%	0.0%	0.0%	0.0%	0.0%	100.0%	

The number of child maltreatment deaths presented in the Semi-Annual Report is not comparable to child maltreatment deaths reported on the website by the Arizona Department of Child Safety (ADCS).

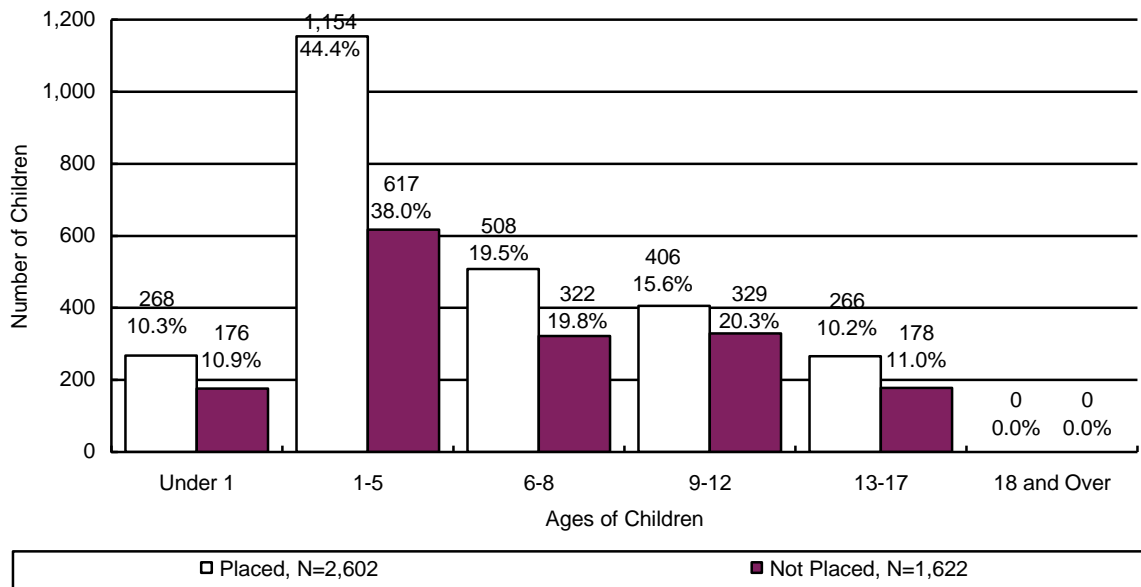
- DCS posts information in accordance with A.R.S. § 8-807 on child fatalities due to abuse or neglect by the child's parent, custodian or caregiver at: <https://dcs.az.gov/news/child-fatalities-near-fatalities-information-releases>.
- This information is posted when the information comes to DCS's attention and a final determination of the fatality due to abuse or neglect has been made by either a substantiated finding or specific criminal charges filed against a parent, guardian or caregiver for causing the fatality.

- The information that comes to DCS's attention and the determination of the fatality due to abuse or neglect may occur sometime after the actual incident for a number of reasons including a determination by a medical professional, a medical examiner, or a criminal child abuse arrest and charge of the perpetrator.

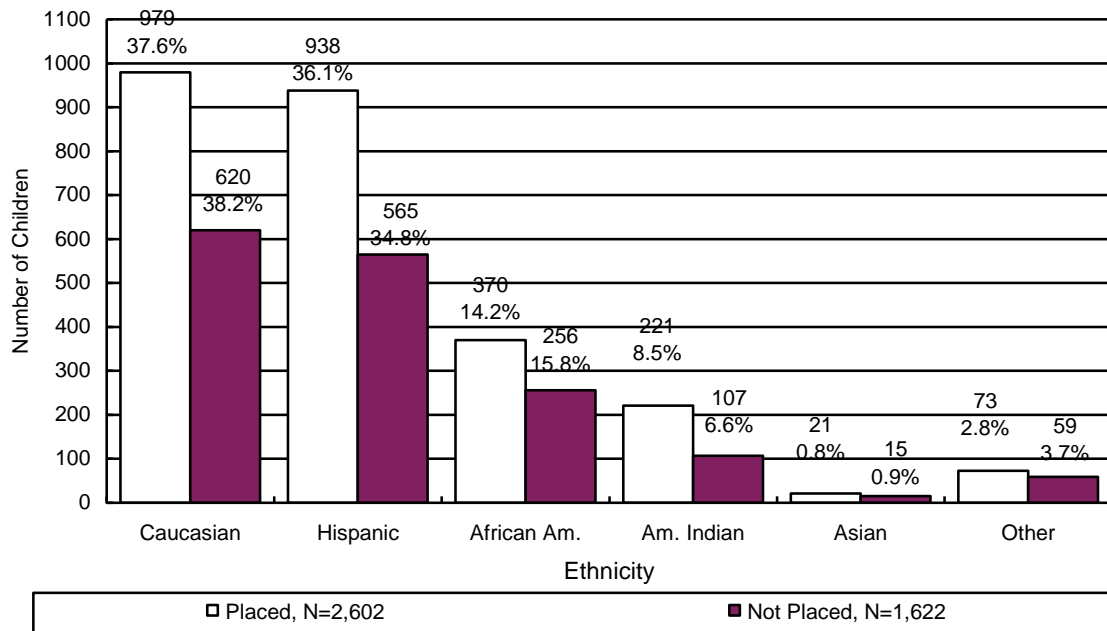
CHILDREN WITH CASE PLAN GOALS OF ADOPTION

Of the 18,906 children in out-of-home care on March 31, 2016, there were 4,224 or 22.3% who had a case plan goal of adoption. Of those, 2,602 have been placed and another 1,622 have not been placed. The age and ethnicity of the children with a case plan goal of adoption is displayed in Chart 36 and Chart 37.

**CHART 33
THE PLACEMENT AND NUMBER OF CHILDREN WITH A CASE PLAN GOAL OF ADOPTION BY AGE**



**CHART 34
THE PLACEMENT AND NUMBER OF CHILDREN WITH A CASE
PLAN GOAL OF ADOPTION BY ETHNICITY**



**TABLE 47
NUMBER OF CHILDREN WITH A PETITION FOR TERMINATION OF PARENTAL RIGHTS
BY COUNTY FOR THE PERIOD OCTOBER 1, 2015 THROUGH MARCH 31, 2016**

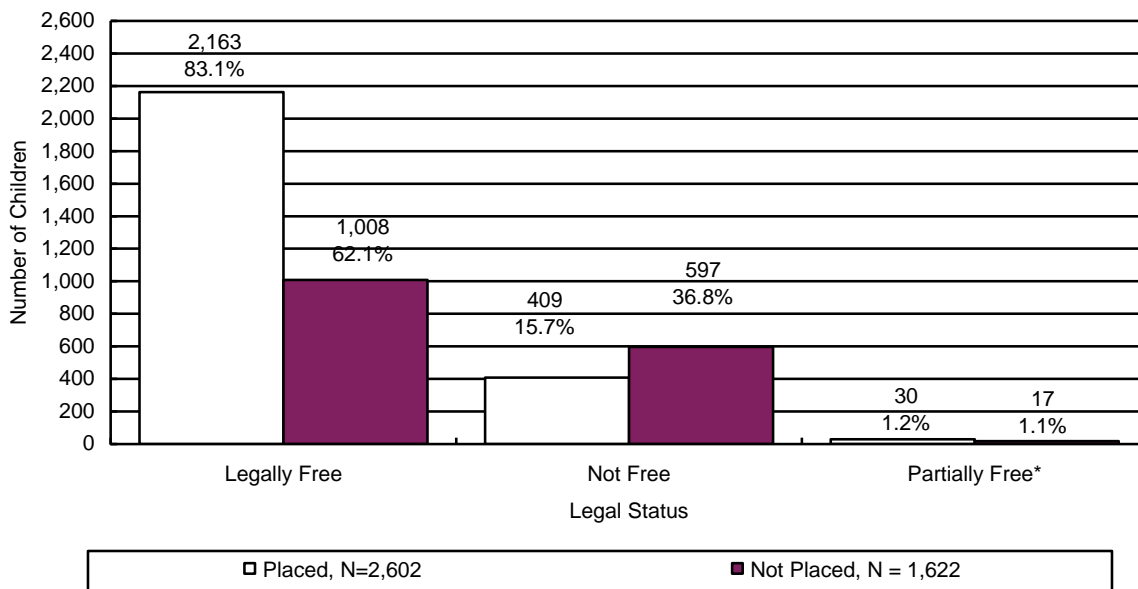
COUNTY	TERMINATION OF RIGHTS GRANTED	TERMINATION OF RIGHTS DENIED	TERMINATION OF RIGHTS GRANTED IN PART/DENIED IN PART	TERMINATION OF RIGHTS WITHDRAWN	TOTAL	% OF TOTAL
APACHE	8	0	0	0	8	0.3%
COCHISE	92	1	0	2	95	3.8%
COCONINO	18	0	0	0	18	0.7%
GILA	20	1	0	0	21	0.9%
GRAHAM	34	0	0	0	34	1.4%
GREENLEE	4	0	0	0	4	0.2%
LA PAZ	1	0	0	0	1	0.0%
MARICOPA	1,008	2	0	1	1,011	40.9%
MOHAVE	180	0	0	0	180	7.3%
NAVAJO	11	0	0	0	11	0.4%
PIMA	688	1	0	2	691	28.0%
PINAL	204	0	0	0	204	8.3%
SANTA CRUZ	7	0	0	1	8	0.3%
YAVAPAI	115	0	0	0	115	4.7%
YUMA	68	0	0	0	68	2.8%
STATEWIDE	2,458	5	0	6	2,469	100.0%
% OF TOTAL	99.6%	0.2%	0.0%	0.2%	100.0%	

The average length of time that a child with a case plan goal of “adoption” has spent in out-of-home care is 1 year and 200 days. Information on the number of placements in terms of the average, median, and range for children with a case plan goal of adoption is shown below in Table 48.

**TABLE 48
PLACEMENT INFORMATION FOR CHILDREN WITH A CASE PLAN GOAL OF ADOPTION**

	Placements
Average	2.5
Median	2.0
Range Minimum	1
Range Maximum	46

**CHART 35
THE PLACEMENT AND NUMBER OF CHILDREN WITH A CASE PLAN GOAL OF ADOPTION BY LEGAL STATUS**



*Partially free refers to a situation where only one of the parent’s rights has been severed.

CHART 36
THE NUMBER OF CHILDREN WITH A CASE PLAN GOAL OF ADOPTION BY LENGTH OF TIME FROM CHANGE OF CASE PLAN GOAL OF ADOPTION TO ADOPTIVE PLACEMENT

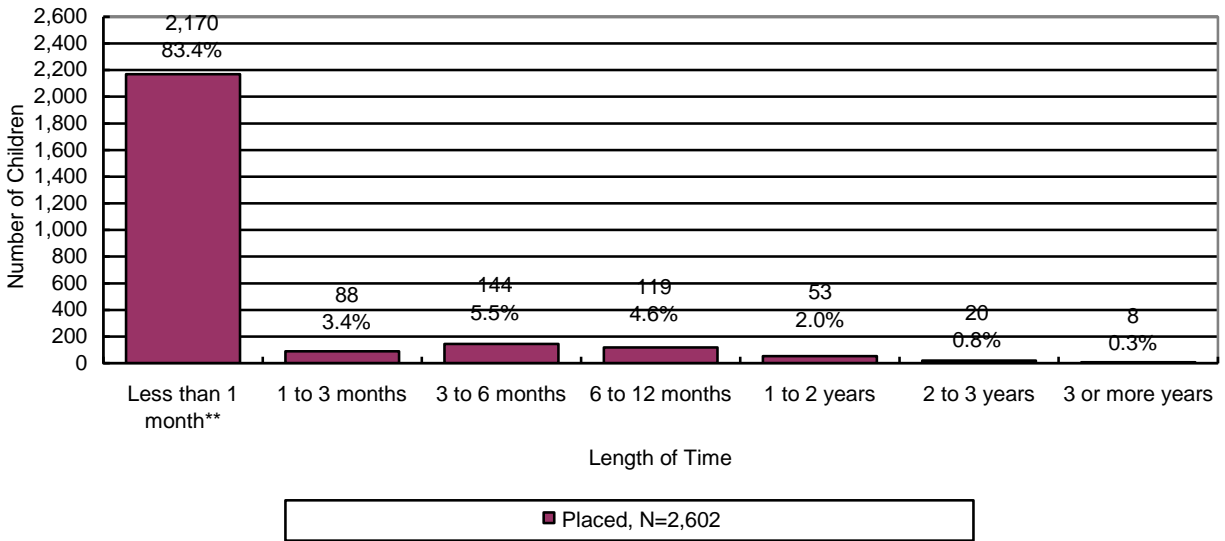


CHART 37
THE NUMBER OF CHILDREN WITH A CASE PLAN GOAL OF ADOPTION WHO WERE IN AN ADOPTIVE PLACEMENT BY THE MARITAL STATUS OF THE ADOPTIVE PARENT

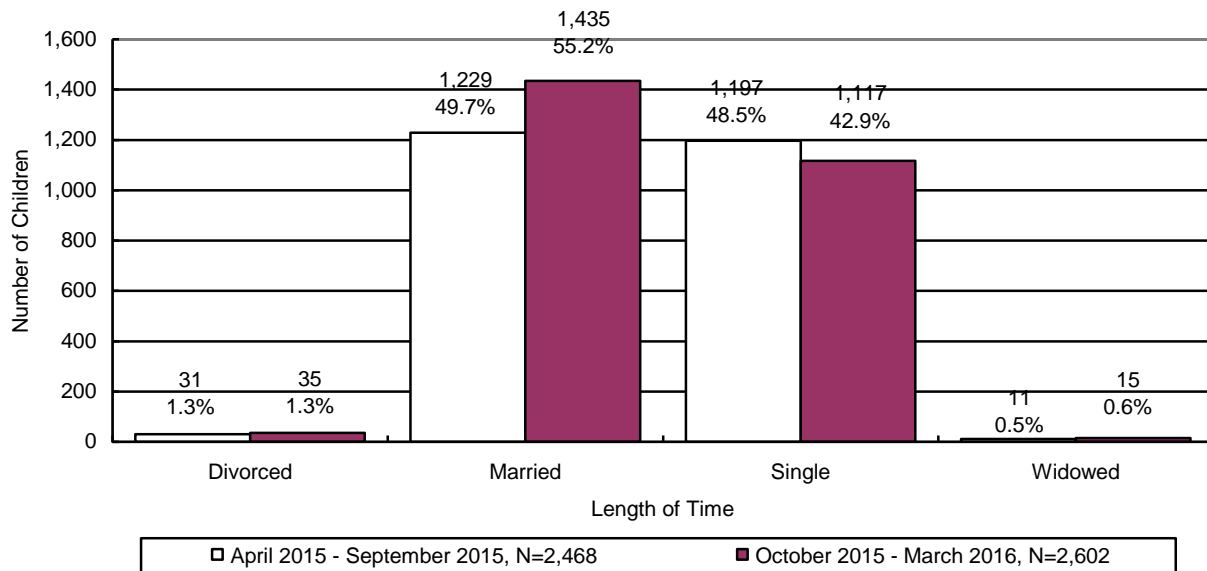
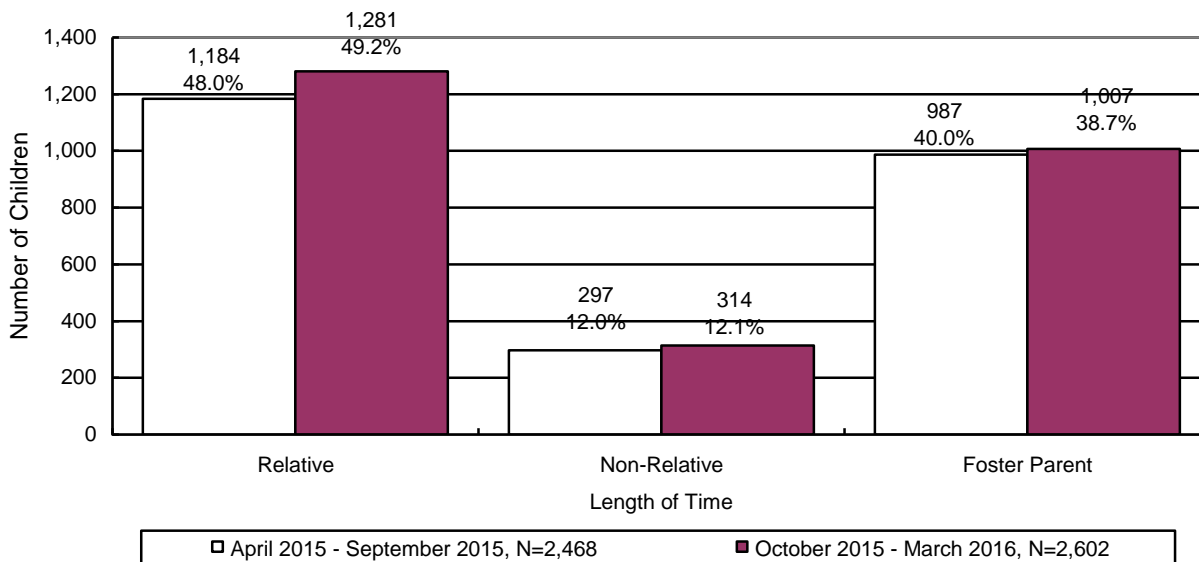


CHART 38
THE NUMBER OF CHILDREN WITH A CASE PLAN GOAL OF ADOPTION WHO WERE IN AN ADOPTIVE PLACEMENT BY THE RELATIONSHIP OF THE ADOPTIVE PARENT



DISRUPTIONS

TABLE 49
THE NUMBER OF CHILDREN WITH A CASE PLAN GOAL OF ADOPTION WHO WERE IN AN ADOPTIVE PLACEMENT AND DISRUPTED BY AGE AND ETHNICITY

By Age	Number	Percentage
Under 1	0	0.0%
Ages 1 – 5	4	44.4%
Ages 6 – 8	2	22.2%
Ages 9 – 12	2	22.2%
Ages 13 – 17	1	11.1%
18 and Over	0	0.0%
Total	9	100.0%
Ethnicity	Number	Percentage
Caucasian	3	33.3%
Hispanic	3	33.3%
African American	2	22.2%
American Indian	1	11.1%
Asian	0	0.0%
Other	0	0.0%
Total	9	100.0%

CHART 39
THE NUMBER OF CHILDREN WITH A CASE PLAN GOAL OF ADOPTION WHO WERE IN AN ADOPTIVE PLACEMENT AND DISRUPTED BY THE MARITAL STATUS OF THE ADOPTIVE PARENT

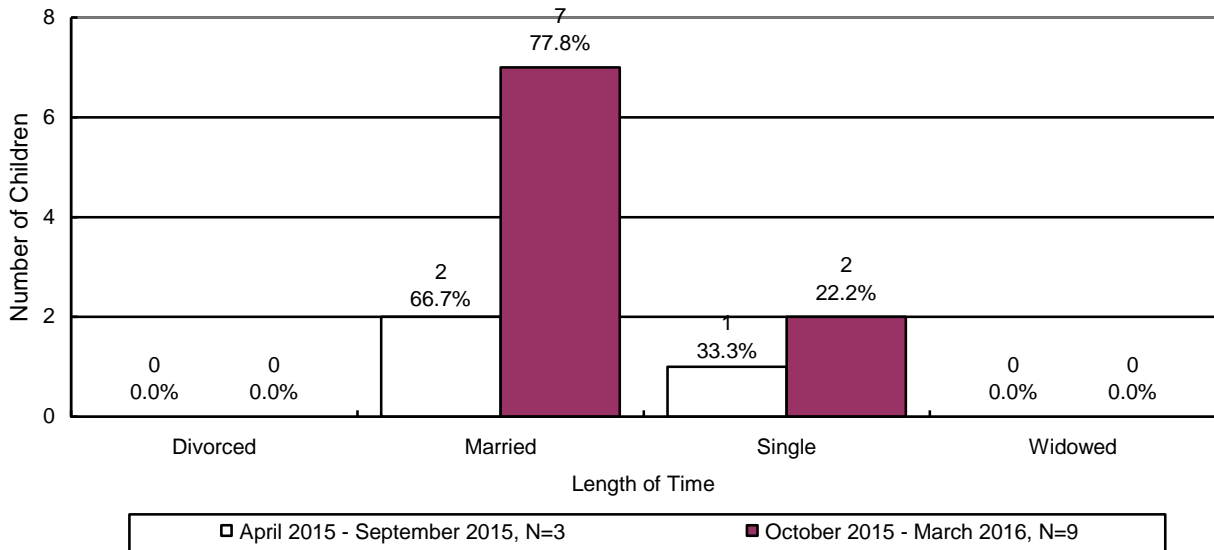
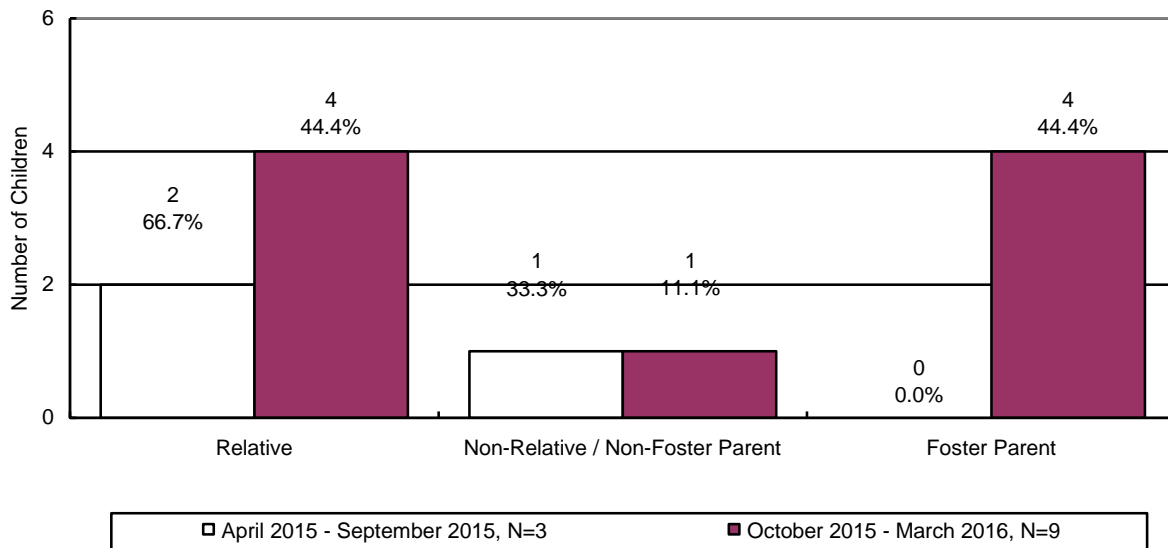
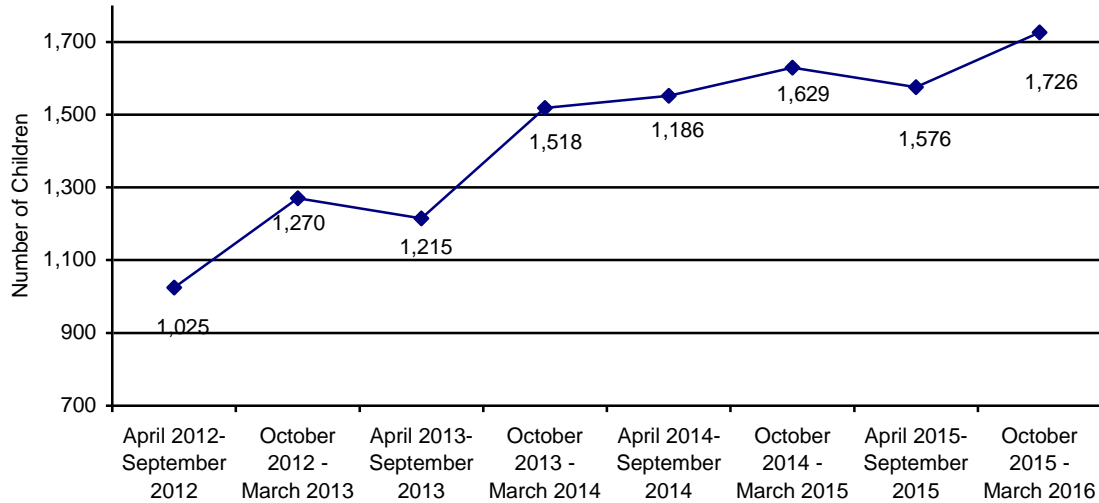


CHART 40
THE NUMBER OF CHILDREN WITH A CASE PLAN GOAL OF ADOPTION WHO WERE IN AN ADOPTIVE PLACEMENT AND DISRUPTED BY THE RELATIONSHIP OF THE ADOPTIVE PARENT



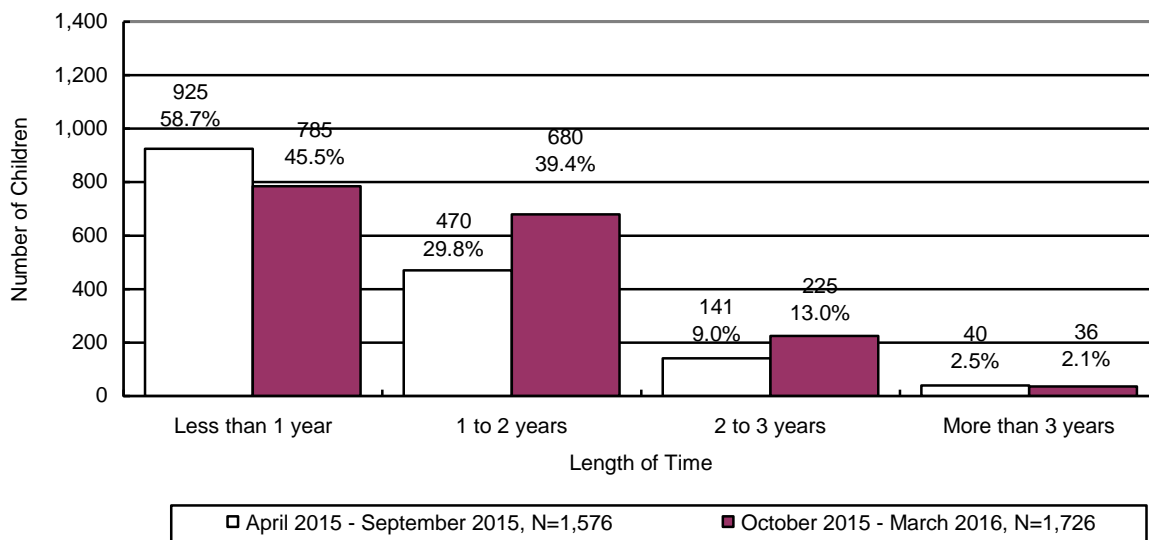
ADOPTIVE SERVICES

**CHART 41
THE NUMBER OF CHILDREN WITH A FINALIZED ADOPTION**



There were 1,726 children with a finalized adoption during the reporting period. Chart 42 displays the number of children with a finalized adoption during the reporting period by the average length of time in out-of-home placement before adoptive placement.

**CHART 42
THE NUMBER AND PERCENTAGE OF CHILDREN WITH A FINALIZED ADOPTION BY AVERAGE LENGTH OF TIME IN OUT-OF-HOME PLACEMENT BEFORE ADOPTIVE PLACEMENT**



The chart below displays the number of children with a finalized adoption by average length of time in adoptive placement before the final order of adoption.

CHART 43
THE NUMBER AND PERCENTAGE OF CHILDREN WITH A FINALIZED ADOPTION BY AVERAGE LENGTH OF TIME IN ADOPTIVE PLACEMENT BEFORE THE FINAL ORDER OF ADOPTION

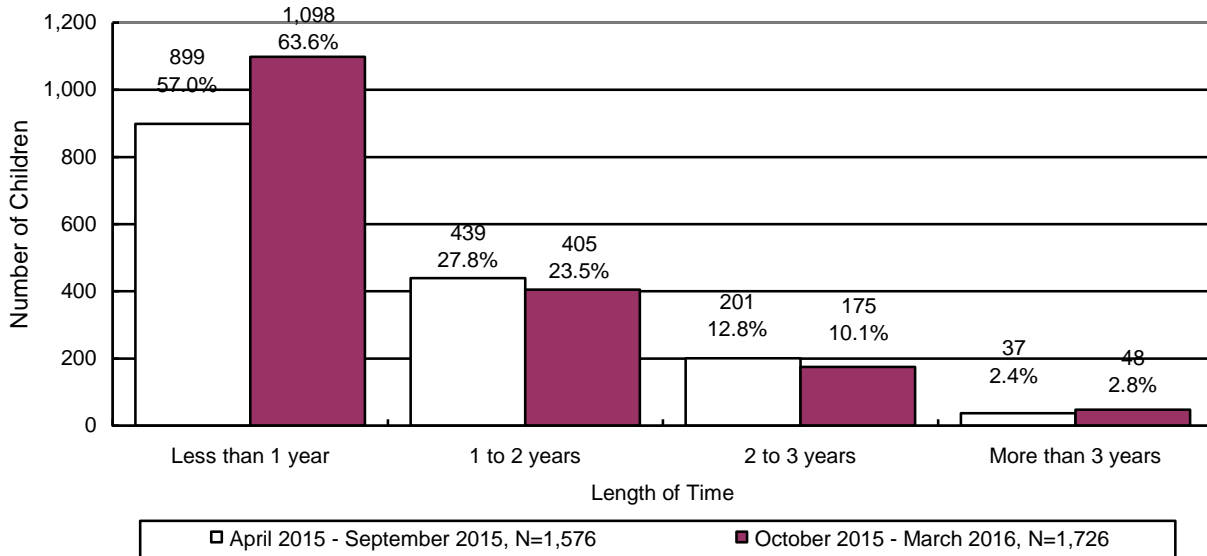


CHART 44
THE NUMBER OF CHILDREN WITH A FINALIZED ADOPTION BY THE MARITAL STATUS OF THE ADOPTIVE PARENT

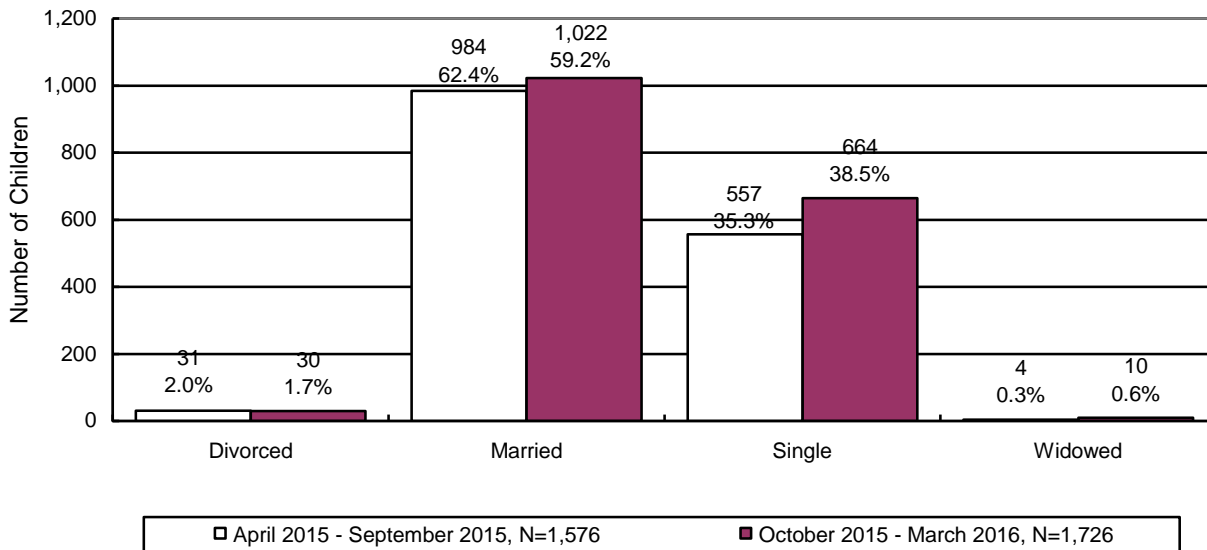


CHART 45
THE NUMBER OF CHILDREN WITH A FINALIZED ADOPTION BY THE RELATIONSHIP
OF THE ADOPTIVE PARENT TO THE CHILD

