

CHILD WELFARE REPORTING REQUIREMENTS

SEMI-ANNUAL REPORT

FOR THE PERIOD OF

APRIL 1, 2008 THROUGH SEPTEMBER 30, 2008

ARIZONA REVISED STATUTES

[LAWS 2006, CHAPTER 203]

ARIZONA DEPARTMENT OF ECONOMIC SECURITY

DIVISION OF CHILDREN, YOUTH AND FAMILIES

ADMINISTRATION FOR CHILDREN, YOUTH AND FAMILIES

CHILD WELFARE REPORTING REQUIREMENTS

Arizona Revised Statute §8-526, as amended by Laws 2006, Chapter 203 requires the Arizona Department of Economic Security (DES) to compile information and produce a semi-annual report for the periods ending on March 31 and September 30 of each year regarding Child Welfare Services, including Child Protective Services (CPS). This report, submitted in satisfaction of that mandate, is for the semi-annual reporting period beginning on April 1, 2008 and ending on September 30, 2008.

TABLE OF CONTENTS

(Reporting period: April 1, 2008 through September 30, 2008)

	<i>Page</i>
EXECUTIVE SUMMARY	4
SEMI-ANNUAL COMPARISONS	7
REPORTS OF CHILD ABUSE AND NEGLECT	
Reports by reporting period and type of child maltreatment – statewide data	8
Sample communications to hotline, not meeting definition of report	10
Reports received by risk level- statewide data	11
Number of reports received by risk level – county specific data	11
Number of reports received by maltreatment – statewide data	12
Number of reports received by maltreatment – county specific data	13
ASSIGNMENT OF INVESTIGATIONS	
Reports assigned for investigation by risk level – statewide data	14
Reports assigned for investigation by risk level – county specific data	14
Reports assigned for investigation by type of maltreatment – statewide data	15
Reports assigned for investigation by type of maltreatment – county specific data	16
INVESTIGATIONS OF CHILD ABUSE AND NEGLECT	
Reports not responded to by risk level- county specific data	17
Investigations by risk level – investigation still open – statewide data	18
Investigations by risk level – investigation still open – county specific data	18
Investigations by type of child maltreatment– investigation still open – statewide data	19
Investigations by type of child maltreatment– investigation still open – county specific data	20
Reports where removal occurred – county specific data	21
COMPLETED INVESTIGATIONS	
Substantiation rate by reporting period	23
Investigations by risk level - proposed substantiated reports – statewide data	24

TABLE OF CONTENTS (continued)
(Reporting period: April 1, 2008 through September 30, 2008)

	<u>Page</u>
Investigations by risk level – proposed substantiated reports – county specific data	24
Investigations by type of child maltreatment – proposed substantiated reports – statewide data	25
Investigations by type of child maltreatment – proposed substantiated reports – county specific data	26
Investigations by risk level - substantiated reports – statewide data	27
Investigations by risk level – substantiated reports county specific data	27
Investigations by type of child maltreatment - substantiated reports – statewide data	28
Investigations by type of child maltreatment – substantiated reports – county specific data	29
Investigations by risk level – unsubstantiated reports – statewide data	30
Investigations by risk level – unsubstantiated reports – county specific data	30
Investigations by type of child maltreatment - unsubstantiated reports – statewide data	31
Investigations by type of child maltreatment – unsubstantiated reports – county specific data	32
SAFE HAVEN INFANTS	
Number of Safe Haven infants delivered during reporting period	33
CHILDREN ENTERING OUT-OF-HOME CARE	
New entries by county – children under 18 years voluntary placement	34
New entries by county	36
New entries – statewide data	37
CHILDREN IN OUT-OF-HOME CARE	
Children in out-of-home care by reporting period	38
Children in group homes ages 0-6	39
Children in shelter ages 0-3	39
The average length of stay in a shelter placement for children ages 0-3 in a shelter placement on the last day of the reporting period	40
All children in care by age and ethnicity	40-41
All children in care by case plan goal and placement type	41-42
All children in care by placement type and age	43
Children in shelter or receiving homes for more than 21 days	44
Children in out-of-home care by length of time in care	45
Children in out-of-home care by legal status	46
Children receiving required visitation	47
FOSTER HOME LICENSING, CLOSURES, AND VISITATIONS	
Foster homes licensed	48
Foster homes closed and reason for closure	48
Child bed spaces available	48

TABLE OF CONTENTS (continued)
(Reporting period: April 1, 2008 through September 30, 2008)

	<u>Page</u>
Number of foster homes receiving the required visitation	49
 CHILDREN LEAVING OUT-OF-HOME CARE	
Semi-Annual comparisons of total number leaving care – For all reasons	50
Total number leaving care	51
Total number leaving care – For reason of reunification with parents	52
Total number leaving care – For reason of living with other relatives	53
Total number leaving care – For reason of adoption	54
Total number leaving care – For reason of guardianship	55
Total number leaving care – For reason of reaching age of majority	56
Total number leaving care – For reason of transfer to another agency	57
Total number leaving care – For reason of runaway	58
Total number leaving care – For reason of death of child	59
Total number leaving care - by cause of death	60
Total number for reason of death of child - with alleged abuse	60
 CHILDREN WITH CASE PLAN GOALS OF ADOPTION	
Number of children with a petition for termination of parental rights	61
The placement and number of children with case plan goals of adoption by age	62
The placement and number of children with case plan goals of adoption by ethnicity	63
The placement and number of children with case plan goals of adoption by legal status	63
Number of children– length of time from change of case plan goal of adoption to adoptive placement	64
 ADOPTIVE SERVICES	
Number of children with a finalized adoption by average length of time in out-of-home placement before adoptive placement	65
Number of children with a finalized adoption by average length of time in adoptive placement before the final order of adoption	65

Executive Summary

The Arizona Department of Economic Security's Division of Children, Youth and Families (Division) is pleased to publish this semi-annual report for April 2008 through September 2008 in compliance with A.R.S. § 8-526. This report is intended to provide its readers an opportunity to review the Division's progress in implementing systemic improvement strategies as they impact key performance indicators.

In September 2005, the Division released *Strengthening Families – A Blueprint for Realigning Arizona's Child Welfare System*. The *Blueprint* outlined ambitious goals and key strategies for (1) enhancing the ability of parents to create safe, stable and nurturing home environments; (2) strengthening families so children can remain safely in their homes; (3) finding more permanent homes more quickly for children; and (4) placing children in the least restrictive, most family-like setting possible.

The improved outcomes for children and families that have resulted from the implementation of those strategies have been highlighted in previous editions of this report and other Division publications. Additional successes are expected as the Division continues the statewide implementation of other continuous improvement strategies, such as embedding the Division's comprehensive Child Safety Assessment, Strengths and Risk Assessment, and Case Planning (CSA/SRA/CP) process into child welfare practice. This enhanced process assists Child Welfare Specialists (CWS) in more effectively assessing risk and engaging families in planning for and completing the services that are going to help them to create safe, stable living environments for their children. The hard-copy version of this process was implemented between February and June 2006. The Division launched a fully automated version of the process in November 2007.

The data contained in this *Semi-Annual Report*, when combined with other child welfare-related information in the Department, demonstrate the significant progress made in many of the Division's areas of focus and identify areas where continued focus is needed.

Child Abuse Hotline and Child Protective Services (CPS) Investigations

The statewide Child Abuse Hotline received 29,369 calls during this reporting period. Of those, 11,876 – or 40.4 percent – *did not meet* the statutory criteria for a CPS report. Calls that did not meet the criteria for a CPS report included: requests for information or referrals for services; questions about current cases; and allegations of abuse or neglect where the alleged perpetrator was not the child's parent, guardian or custodian (those calls are referred to law enforcement for response). Every call that does not meet the criteria for a CPS report is reviewed within 48 hours by quality assurance staff to ensure the accuracy of that decision.

The statewide Child Abuse Hotline received 17,493 calls during this reporting period that met the statutory criteria for a CPS report. Of those, 183 were referred to other jurisdictions, the military or tribal governments for investigation. This resulted in 17,310 CPS reports being assigned to child welfare specialists for investigation. Compared to the same reporting period last year, this represents a decrease of 566 CPS reports assigned for investigation – or 3.3 percent. This decrease in CPS reports requiring an investigation has mainly impacted Maricopa and Pima counties.

Of the 17,310 CPS reports assigned for investigation during this reporting period, 10,064 reports – or 58.1 percent – had investigation closures entered into the Children's Information Library and Data Source (CHILDS) statewide case management information system. Closing a case means that the initial investigation to the original allegations of abuse or neglect has been completed and the appropriate case plan is put in place, as needed. Many factors can impact the closure of investigations, including time

needed for child welfare specialists to become familiar with the new risk assessment and case planning process, and the corresponding automated version.

Of the 14,579 CPS reports subject to substantiation during this reporting period, 856 – or 5.9 percent – were substantiated. An additional 161 CPS reports – or 1.1 percent – were proposed for substantiation by child welfare specialists and are currently awaiting the results of the appeals process. Over time, the number of substantiated and proposed substantiated CPS reports associated with this time period will increase as investigation findings are entered into CHILDS.

It is sometimes difficult to substantiate allegations of abuse or neglect because current state laws that define child maltreatment do not include many situations related to child neglect or sexual abuse. The Department attempted to remedy this situation by supporting the introduction of House Bill 2704 in the Forty-eighth Legislature, Second Session. Although the bill successfully passed the House Human Services and Rules committees, the bill was not heard in the Senate. During the Forty-ninth Legislature, first regular session, the Department is supporting the reintroduction as Senate Bill 1047.

Children in Out-of-Home Care

The Division continues to engage the community in efforts to keep children safe, strengthen families, and prevent the need for children to be removed from their homes through the statewide implementation of strategies such as the Annie E. Casey Foundation's Family to Family Initiative. Family to Family includes four basic principles: (1) a child's safety is paramount; (2) children belong in families; (3) families need strong communities; and (4) public child welfare systems need partnerships with the community and with other systems to achieve strong outcomes for children.

The number of children in out-of-home care increased from 9,721 in the prior reporting period to 10,303 in September 2008. In these tough economic times the Department continues to make efforts to keeping children safe and strengthening families by stressing our preference for family setting placements when faced with the unavoidable choice of bringing a child into care.

The Division continues its success in placing children in the most family-like setting possible. In September 2008, 8,050 children – or 78.1 percent of all children in out-of-home care – were placed with relatives or licensed foster parents. An additional 52 children were placed with their parents on a trial home visit and 415 youth were residing in independent living settings. Efforts to increase the number of licensed foster parents who are able to meet the needs of children requiring out-of-home placement resulted in 162 new homes being licensed during this reporting period.

The Division continues to make tremendous strides in reducing the number of young children in shelter and group home care. In September 2008, there were 21 young children ages 0 through 3 in shelter care. This represents a decrease of 89 children – or 80.9 percent – since June 2005. Placement of young children in shelter care continues to be influenced by the need to place some children after regular work hours, such as weekends, as well as the placement of children in a specialized shelter in Pima County for medically fragile children. The Division has also worked diligently to reduce the number of very young children in group homes. In September 2008, there were 14 young children ages 0 to 6 in group homes. This represents a decrease of 116 children – or 89.2 percent – since June 2005. There are times when placement of young children in group homes is in the best interests of the children; for example, when group placement would allow siblings to stay together or when group placement is considered the least restrictive placement for a child with behavioral issues.

The length of time that all children spend in shelter care continues to decrease. Since March 2005, the number of children placed in shelter or receiving home care for 21 days or more decreased by 542 children – or 48.1 percent – a significant improvement. Compared to the same reporting period last year, the number of children in these temporary care settings decreased by 94 children – or 13.8 percent.

The state requires monthly face to face visitation with children in foster care. The current report shows that 74.4 percent of the children in foster care received their visitation during the last month of the reporting period. This compares to 68.2 percent receiving their visit during the last month of the reporting period ending March 2005. The Department recognizes a strong correlation between caseworker visits with children and positive outcomes for these children, such as achieving permanency and other indicators of child well-being, and continues to make efforts to improve our rate of visitation.

Permanency for Children

The Division continues to work toward achieving permanency children placed in out-of-home care. The total number of children achieving permanency through family reunification, adoption or legal guardianship was 3,190 in this reporting period, compared to 3,184 in the same reporting period last year. Compared to the same reporting period last year, in this reporting period:

- 2,083 children exited the system to family reunification, an increase of 124 children – or 6.3 percent.
- 797 children exited to adoption, an increase of 24 children – or 3.1 percent.
- 310 children exited to guardianship, a decrease of 142 children – or 31.4 percent.

This data demonstrates that more children are being reunified with their parents and more children are achieving permanency through adoption, which is considered the most permanent plan for a child who can not safely return home. Arizona continues to be recognized for its high rate of adoptions through receipt of federal Adoption Incentive funding. Incentive funding was awarded in federal fiscal years 2005, 2006 and 2007. In 2006, Arizona achieved the highest amount among states receiving incentive funding, and Arizona was the second highest among states receiving incentives in 2007.

Challenges

The Division faces a number of challenges in its efforts to ensure safety and promote permanency for abused and neglected children. Some of the challenges the Division has faced in meeting these goals are:

- Recruiting staff with expertise in child welfare and the retention of trained and qualified staff.
- Increased expectations for staff to implement new practices and meet new federal requirements without adequate funding.
- Economic factors which create additional stress upon families and increases factors that place children at risk of maltreatment.

Despite these challenges, the Division continues to ensure child welfare staff has the tools they need to do their jobs effectively, and that both state and federal standards are being implemented. The Division continues to work in partnership with the federal government to meet the federal Child and Family Service Review (CFSR) standards to improve outcomes for the children and families we serve.

Semi-Annual Comparisons

	Oct 2004 through Mar 2005	Apr 2005 through Sep 2005	Oct 2005 through Mar 2006	Apr 2006 through Sep 2006	Oct 2006 through Mar 2007	Apr 2007 through Sep 2007	Oct 2007 through Mar 2008	Apr 2008 through Sep 2008
Number of Reports Received	18,839	18,797	17,756	16,781	16,612	18,078	17,628	17,493
Number of Reports Substantiated ¹	1,734	1,677	1,326	1,376	1,369	1,413	1,223	856
Substantiation Rate	11%	11%	9%	10%	10%	10%	8%	6%
Number of Reports Investigated & Closed	N/A	N/A	N/A	16,256	15,017	12,722	10,760	10,064
Number of Reports Responded To	N/A	N/A	N/A	16,619	16,422	17,876	17,413	17,310
Number of new removals	3,617	4,078	3,753	3,773	3,683	3,924	3,742	4,546
Number of new removals with Voluntary under 18	118	420	290	386	398	468	408	370
Number of Children in Out-of-Home Care on the Last Day of Reporting Period	9,536	9,906	9,902	9,833	9,773	9,701	9,721	10,303
Number of Children in Shelter for More than 21 Days	1,127	1,039	840	744	705	679	626	585
Number and Percentage of Children Receiving Visitation In the Last Month of Reporting Period	6,506 (68.2%)	6,045 (61.0%)	6,411 (64.7%)	6,437 (65.5%)	7,610 (77.9%)	7,283 (75.1%)	7,376 (75.9%)	7,664 (74.4%)
Number and Percentage of Children not Receiving Visitation	3,030 (31.8%)	3,861 (39.0%)	3,491 (35.3%)	3,396 (34.5%)	2,163 (22.1%)	2,418 (24.9%)	2,345 (24.1%)	2,639 (25.6%)
Number and Percentage of Parents Receiving Visitation	1,255 (56.0%)	1,080 (47.9%)	1,154 (52.1%)	1,131 (51.8%)	1,398 (63.1%)	1,241 (63.5%)	1,025 (62.3%)	1,022 (60.2%)
Number of Licensed Foster Homes	2,267	2,288	2,863	3,256	3,177	3,512	3,592	3,615
Number of Foster Home Spaces Available to ACYF	5,020	4,905	5,668	6,469	6,498	6,639	6,283	7,116
Number of New Foster Homes	400	397	328	426	432	435	794	162
Number of Foster Homes Closed	410	258	295	166	232	100	445	139
Number and Percentage of Foster Homes Receiving Visitation In the Last Qtr. Of Reporting Period	1,791 (79.0%)	1,672 (63.3%)	1,833 (64.0%)	1,790 (55.0%)	2,116 (66.6%)	1,739 (49.5%)	2,137 (59.5%)	2,412 (66.7%)
Number and Percentage of Foster Homes not Receiving Visitation	476 (21.0%)	968 (36.7%)	1,030 (36.0%)	1,466 (45.0%)	1,061 (33.4%)	1,773 (50.5%)	1,455 (40.5%)	1,203 (33.3%)
Number of Children Leaving DES Custody	2,726	3,488	3,506	3,595	3,553	3,824	3,512	3,773
Number of Children With a Case Plan Goal of Adoption	2,044	2,170	2,345	2,302	2,439	2,186	1,954	1,856
Number of Children With a Finalized Adoption	430	570	586	736	695	773	765	797

¹ Since the appeals process delays the substantiation of reports, revisions to the substantiation rate for the prior reporting period will occur with every semi-annual report produced.

Reports of Abuse & Neglect

Child abuse and neglect are defined in A.R.S. §§201 and A.R.S. §13-3623 (A). These definitions provide the major categories in this report.

Between April 1, 2008 and September 30, 2008, there were 17,493 incoming communications to the Child Abuse Hotline that met the criteria for a report of abuse or neglect. Of these, 183 were within the jurisdiction of military or tribal governments and were referred to those jurisdictions. This compares to 17,628 incoming communications received during the last reporting period which met the criteria of a report of abuse or neglect.

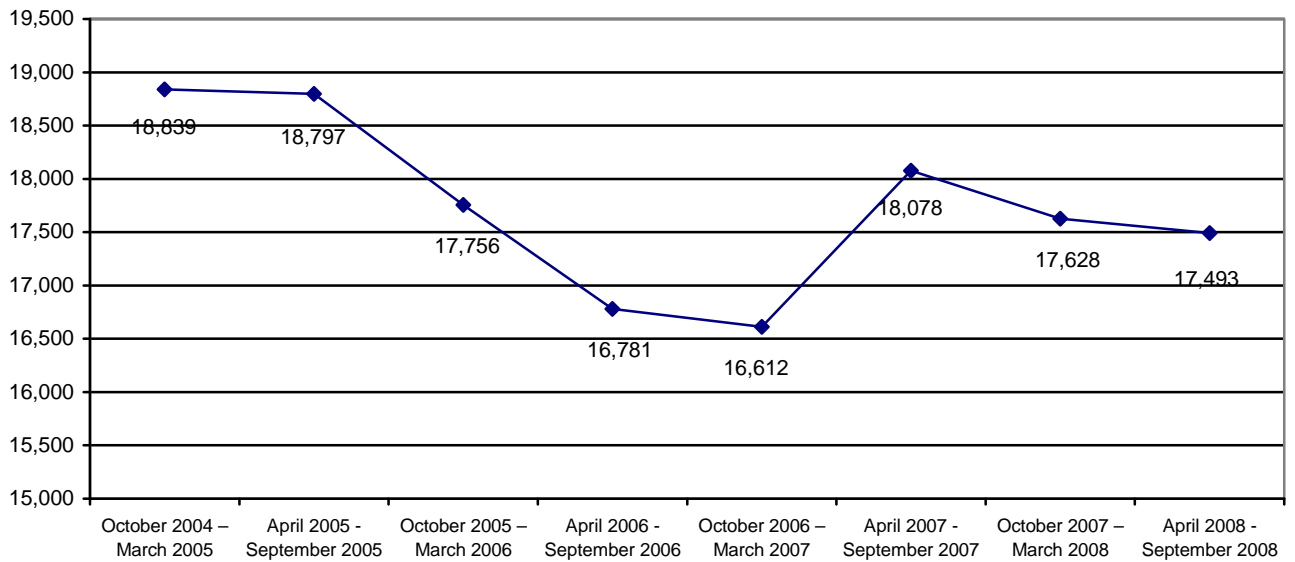
Table 1 shows the number of reports received by the Department by category of maltreatment for the last eight reporting periods. The table shows that for the current reporting period 10,539 or 60.2 percent of the 17,493 reports of maltreatment were related to allegations of neglect, 5,737 or 32.8 percent of the reports were related to allegations of physical abuse, 1,028 or 5.9 percent of the reports were related to allegations of sexual abuse, and 189 or 1.1 percent of the reports were related to allegations of emotional abuse.

**TABLE 1
REPORTS BY REPORTING PERIOD AND TYPE OF MALTREATMENT**

	Neglect	Physical Abuse	Sexual Abuse	Emotional Abuse	Total
October 2004 – March 2005	10,950 58.2%	6,504 34.5%	1,112 5.9%	273 1.4%	18,839 100.0%
April 2005 - September 2005	11,282 60.0%	6,139 32.7%	1,135 6.0%	241 1.3%	18,797 100.0%
October 2005 – March 2006	10,592 59.6%	5,890 33.2%	1,010 5.7%	264 1.5%	17,756 100.0%
April 2006 - September 2006	10,201 60.7%	5,346 31.9%	1,019 6.1%	215 1.3%	16,781 100.0%
October 2006 – March 2007	9,838 59.2%	5,571 33.5%	1,007 6.1%	196 1.2%	16,612 100.0%
April 2007 – September 2007	10,922 60.4%	5,836 32.3%	1,108 6.1%	212 1.2%	18,078 100.0%
October 2007 – March 2008	10,449 59.2%	6,005 34.1%	980 5.6%	194 1.1%	17,628 100.0%
April 2008 – September 2008	10,539 60.2%	5,737 32.8%	1,028 5.9%	189 1.1%	17,493 100.0%

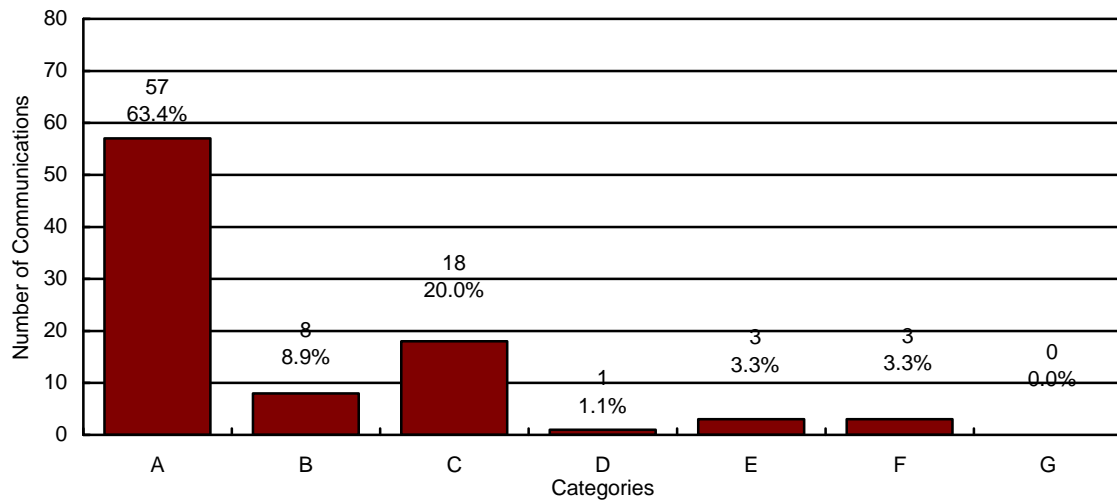
Chart 1 shows that the number of CPS reports received by the CPS Hotline has decreased over the past year. Comparing the current reporting period to the prior reporting period, the number of reports received decreased by 135 reports or 0.8 percent.

**CHART 1
REPORTS OF CHILD ABUSE AND NEGLECT BY REPORTING PERIOD**



In addition to the 17,493 reports during the current reporting period, the Child Abuse Hotline received 11,876 communications that did not meet the statutory criteria of a report of maltreatment. A random sample of these communications is contained in the chart below.

CHART 2
SAMPLE OF COMMUNICATIONS TO THE CHILD ABUSE HOTLINE THAT DO NOT MEET THE STATUTORY REQUIREMENTS OF A REPORT OF ABUSE OR NEGLECT



N=90

- A = Concern Only/No Allegation of Child Abuse or Neglect**
- B = Out of CPS Jurisdiction**
- C = Call Appropriate for Law Enforcement Jurisdiction²**
- D = Non-Caretaker Neglect/Child No Longer at Risk**
- E = Insufficient Information**
- F = Truancy/Custody Issues**
- G = Current Case Questions or Referrals**

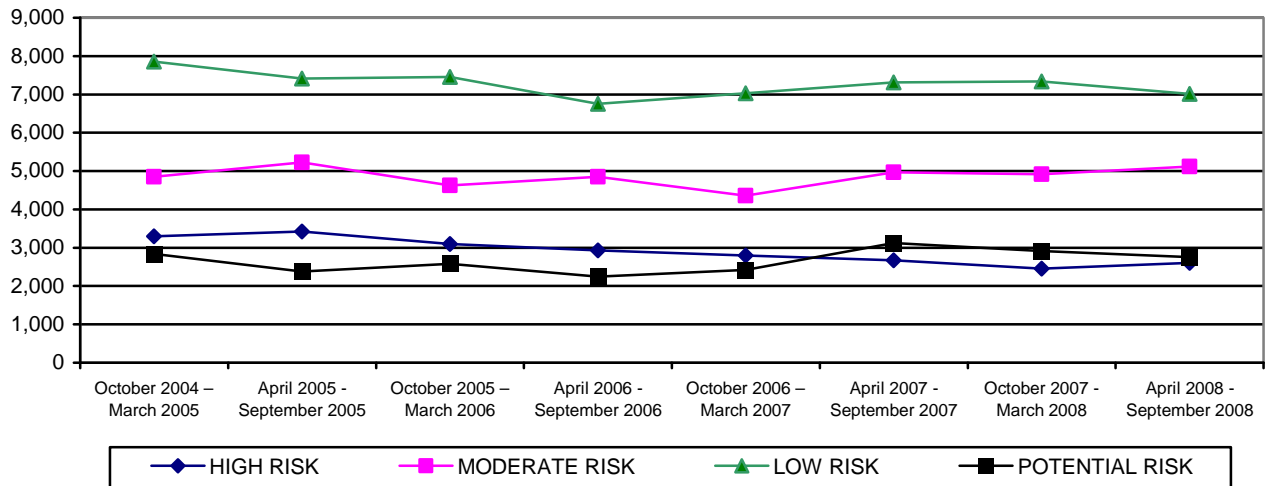
All communications that do not meet the statutory requirements for a field investigation of abuse or neglect are reviewed within 48 hours by DES quality assurance staff.

² The category “Call Appropriate for Law Enforcement Jurisdiction” refers to a situation where the alleged perpetrator is not a parent or primary caretaker and the allegations, if true, would constitute a crime.

For the current reporting period, the CPS Hotline classified 14.9 percent of the reports received as high risk, 29.2 percent as moderate risk, 40.1 percent as low risk, and 15.8 percent as potential risk.

For the current reporting period, the CPS Hotline classified 1.1 percent of CPS reports as emotional abuse, 60.2 percent as neglect, 32.8 percent as physical abuse, and 5.9 percent as sexual abuse.

**CHART 3
NUMBER OF REPORTS RECEIVED BY RISK LEVEL**



**TABLE 2
NUMBER OF REPORTS RECEIVED BY RISK LEVEL AND COUNTY FOR PERIOD OF
APRIL 1, 2008 THROUGH SEPTEMBER 30, 2008**

COUNTY	HIGH	MODERATE	LOW	POTENTIAL	TOTAL	% OF TOTAL
APACHE	10	20	39	7	76	0.4%
COCHISE	48	127	163	66	404	2.3%
COCONINO	69	108	119	51	347	2.0%
GILA	16	55	57	20	148	0.9%
GRAHAM	9	38	38	17	102	0.6%
GREENLEE	2	3	6	4	15	0.1%
LA PAZ	10	18	26	16	70	0.4%
MARICOPA	1,630	2,893	4,072	1,627	10,222	58.4%
MOHAVE	86	212	254	73	625	3.6%
NAVAJO	63	87	120	47	317	1.8%
PIMA	399	941	1,320	538	3,198	18.3%
PINAL	147	287	399	150	983	5.6%
SANTA CRUZ	10	25	28	11	74	0.4%
YAVAPAI	55	181	221	71	528	3.0%
YUMA	52	120	154	58	384	2.2%
STATEWIDE	2,606	5,115	7,016	2,756	17,493	100.0%
% OF TOTAL	14.9%	29.2%	40.1%	15.8%	100.0%	

TABLE 3
NUMBER OF REPORTS RECEIVED BY RISK LEVEL AND COUNTY FOR PERIOD OF
OCTOBER 1, 2007 THROUGH MARCH 30, 2008

COUNTY	HIGH	MODERATE	LOW	POTENTIAL	TOTAL	% OF TOTAL
APACHE	14	27	36	17	94	0.5%
COCHISE	48	142	189	79	458	2.6%
COCONINO	62	92	165	66	385	2.2%
GILA	29	46	73	21	169	1.0%
GRAHAM	14	21	35	14	84	0.5%
GREENLEE	1	5	10	7	23	0.1%
LA PAZ	11	17	26	9	63	0.4%
MARICOPA	1,487	2,908	4,172	1,685	10,252	58.1%
MOHAVE	83	162	245	86	576	3.3%
NAVAJO	49	62	98	44	253	1.4%
PIMA	341	883	1,453	568	3,245	18.4%
PINAL	179	256	404	165	1,004	5.7%
SANTA CRUZ	16	23	42	11	92	0.5%
YAVAPAI	57	160	222	70	509	2.9%
YUMA	62	115	169	75	421	2.4%
STATEWIDE	2,453	4,919	7,339	2,917	17,628	100.0%
% OF TOTAL	13.9%	27.9%	41.7%	16.5%	100.0%	

CHART 4
NUMBER OF REPORTS RECEIVED BY TYPE OF MALTREATMENT

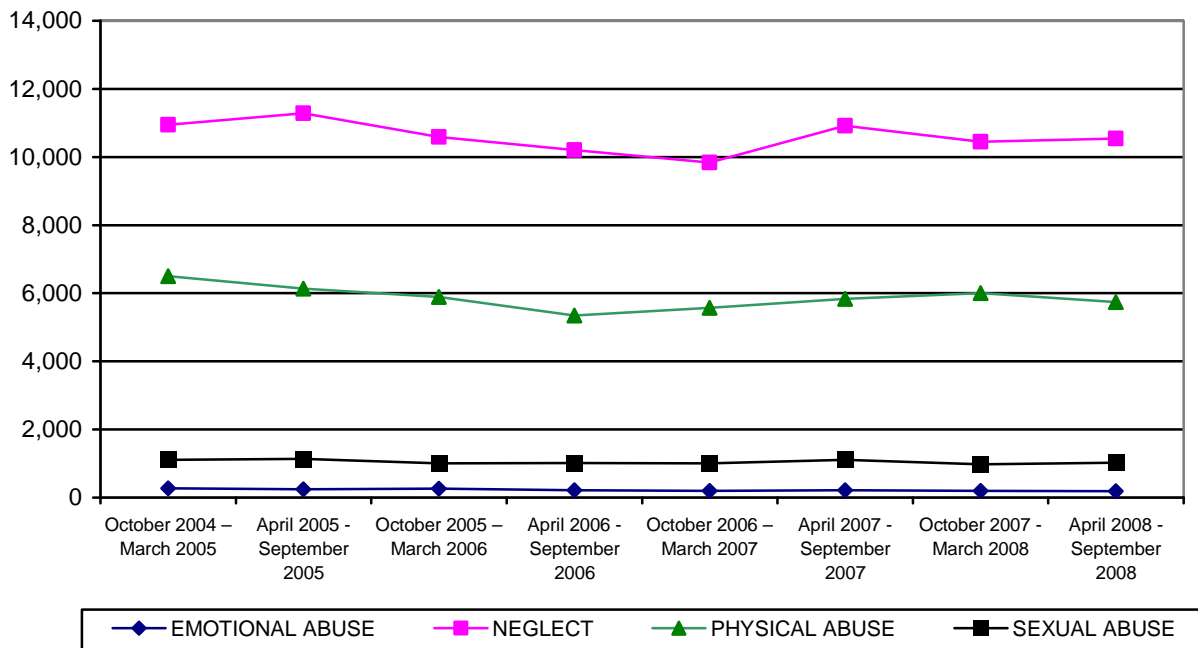


TABLE 4
NUMBER OF REPORTS RECEIVED BY TYPE OF MALTREATMENT AND COUNTY FOR
PERIOD OF APRIL 1, 2008 THROUGH SEPTEMBER 30, 2008

COUNTY	EMOTIONAL ABUSE	NEGLECT	PHYSICAL ABUSE	SEXUAL ABUSE	TOTAL	% OF TOTAL
APACHE	0	49	23	4	76	0.4%
COCHISE	3	257	122	22	404	2.3%
COCONINO	2	220	97	28	347	2.0%
GILA	1	107	27	13	148	0.9%
GRAHAM	1	68	23	10	102	0.6%
GREENLEE	0	12	1	2	15	0.1%
LA PAZ	0	41	27	2	70	0.4%
MARICOPA	105	6,087	3,454	576	10,222	58.4%
MOHAVE	7	377	200	41	625	3.6%
NAVAJO	4	197	99	17	317	1.8%
PIMA	44	1,892	1,088	174	3,198	18.3%
PINAL	12	606	300	65	983	5.6%
SANTA CRUZ	0	47	21	6	74	0.4%
YAVAPAI	7	338	143	40	528	3.0%
YUMA	3	241	112	28	384	2.2%
STATEWIDE	189	10,539	5,737	1,028	17,493	100.0%
% OF TOTAL	1.1%	60.2%	32.8%	5.9%	100.0%	

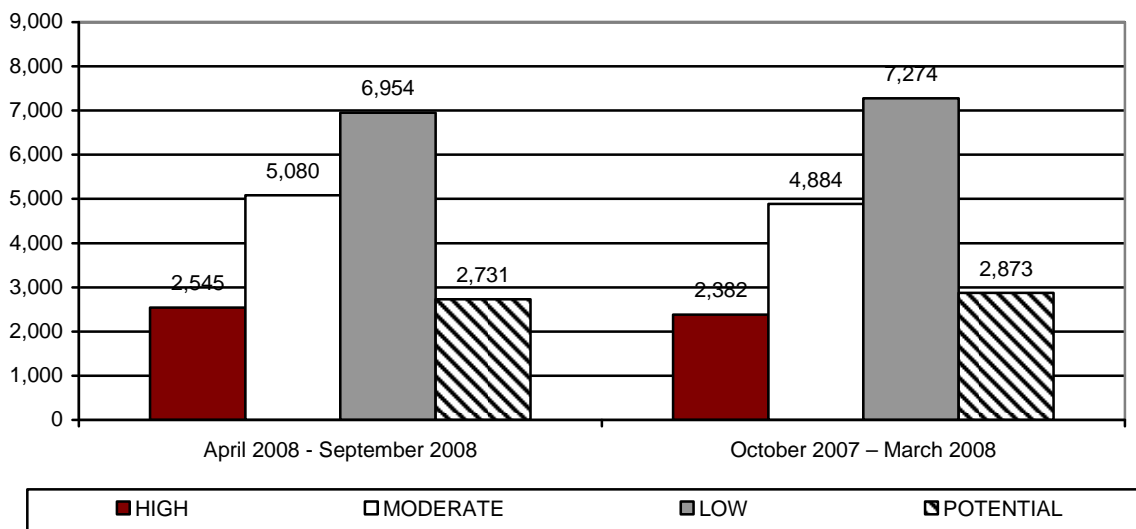
TABLE 5
NUMBER OF REPORTS RECEIVED BY TYPE OF MALTREATMENT AND COUNTY FOR
PERIOD OF OCTOBER 1, 2007 THROUGH MARCH 31, 2008

COUNTY	EMOTIONAL ABUSE	NEGLECT	PHYSICAL ABUSE	SEXUAL ABUSE	TOTAL	% OF TOTAL
APACHE	1	63	23	7	94	0.5%
COCHISE	5	281	147	25	458	2.6%
COCONINO	3	223	132	27	385	2.2%
GILA	2	116	43	8	169	1.0%
GRAHAM	2	48	32	2	84	0.5%
GREENLEE	0	15	6	2	23	0.1%
LA PAZ	0	37	22	4	63	0.4%
MARICOPA	94	5,941	3,643	574	10,252	58.1%
MOHAVE	8	358	182	28	576	3.3%
NAVAJO	3	164	73	13	253	1.4%
PIMA	48	1,946	1,079	172	3,245	18.4%
PINAL	13	612	322	57	1,004	5.7%
SANTA CRUZ	1	58	27	6	92	0.5%
YAVAPAI	9	312	149	39	509	2.9%
YUMA	5	275	125	16	421	2.4%
STATEWIDE	194	10,449	6,005	980	17,628	100.0%
% OF TOTAL	1.1%	59.2%	34.1%	5.6%	100.0%	

ASSIGNMENT OF INVESTIGATIONS

During the reporting period, there were 17,493 reports that were appropriate for investigation. Of those, 183 reports fell within the jurisdiction of military or tribal governments. This left 17,310 reports that were assigned to be investigated by CPS. The following tables and charts in this section provide statewide and county level information on these reports.

**CHART 5
NUMBER OF REPORTS ASSIGNED FOR INVESTIGATION BY RISK LEVEL AND REPORTING PERIOD**



**TABLE 6
NUMBER OF REPORTS ASSIGNED FOR INVESTIGATION BY RISK LEVEL AND COUNTY FOR PERIOD OF APRIL 1, 2008 THROUGH SEPTEMBER 30, 2008**

COUNTY	HIGH	MODERATE	LOW	POTENTIAL	TOTAL	% OF TOTAL
APACHE	8	18	31	4	61	0.4%
COCHISE	47	127	161	66	401	2.3%
COCONINO	58	102	108	48	316	1.8%
GILA	14	55	56	20	145	0.8%
GRAHAM	9	37	38	17	101	0.6%
GREENLEE	2	3	6	4	15	0.1%
LA PAZ	7	17	21	14	59	0.3%
MARICOPA	1,622	2,885	4,056	1,620	10,183	58.9%
MOHAVE	82	211	252	73	618	3.6%
NAVAJO	45	82	110	43	280	1.6%
PIMA	396	936	1,317	533	3,182	18.4%
PINAL	138	283	395	149	965	5.6%
SANTA CRUZ	10	25	28	11	74	0.4%
YAVAPAI	55	180	221	71	527	3.0%
YUMA	52	119	154	58	383	2.2%
STATEWIDE	2,545	5,080	6,954	2,731	17,310	100.0%

% OF TOTAL	14.1%	29.4%	40.1%	15.8%	100.0%	
------------	-------	-------	-------	-------	--------	--

**TABLE 7
NUMBER OF REPORTS ASSIGNED FOR INVESTIGATION BY RISK LEVEL AND COUNTY
FOR PERIOD OF OCTOBER 1, 2007 THROUGH MARCH 31, 2008**

COUNTY	HIGH	MODERATE	LOW	POTENTIAL	TOTAL	% OF TOTAL
APACHE	13	23	30	13	79	0.5%
COCHISE	48	142	187	79	456	2.6%
COCONINO	53	83	145	60	341	2.0%
GILA	20	43	70	15	148	0.8%
GRAHAM	10	21	35	14	80	0.5%
GREENLEE	1	5	10	7	23	0.1%
LA PAZ	9	6	22	8	55	0.3%
MARICOPA	1,471	2,901	4,165	1,672	10,209	58.6%
MOHAVE	80	162	243	86	571	3.3%
NAVAJO	42	59	87	39	227	1.3%
PIMA	338	879	1,448	566	3,231	18.6%
PINAL	166	253	401	158	978	5.6%
SANTA CRUZ	16	23	42	11	92	0.5%
YAVAPAI	55	160	221	70	506	2.9%
YUMA	60	114	168	75	417	2.4%
STATEWIDE	2,382	4,884	7,274	2,873	17,413	100.0%
% OF TOTAL	13.7%	28.0%	41.8%	16.5%	100.0%	

**CHART 6
NUMBER OF REPORTS ASSIGNED FOR INVESTIGATION BY TYPE OF MALTREATMENT
AND REPORTING PERIOD**

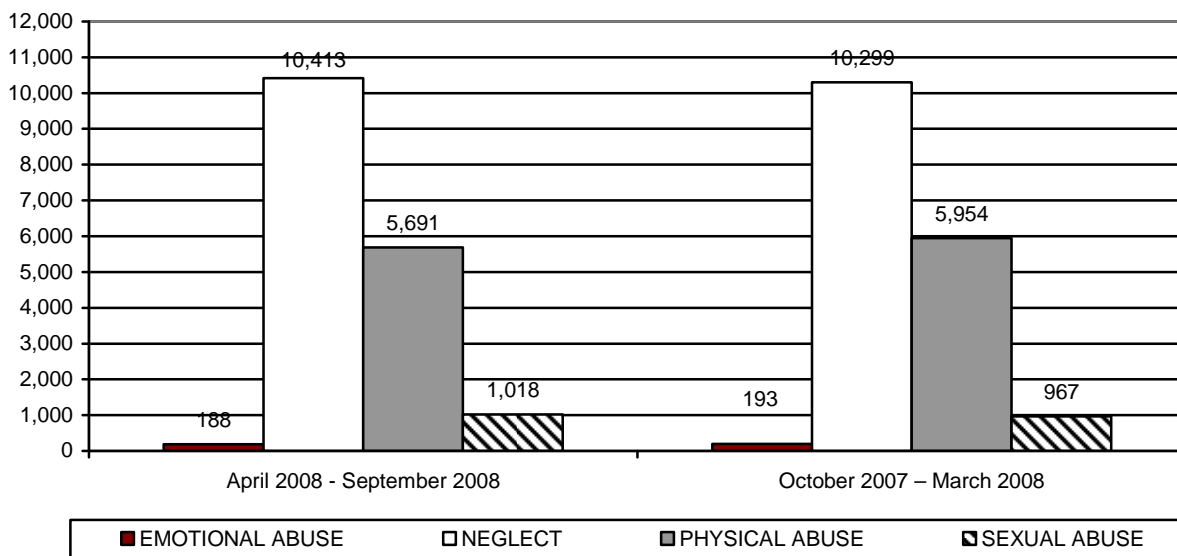


TABLE 8
NUMBER OF REPORTS ASSIGNED FOR INVESTIGATION BY TYPE OF MALTREATMENT
BY COUNTY FOR PERIOD OF APRIL 1, 2008 THROUGH SEPTEMBER 30, 2008

COUNTY	EMOTIONAL ABUSE	NEGLECT	PHYSICAL ABUSE	SEXUAL ABUSE	TOTAL	% OF TOTAL
APACHE	0	41	18	2	61	0.4%
COCHISE	3	255	121	22	401	2.3%
COCONINO	2	200	89	25	316	1.8%
GILA	1	104	27	13	145	0.8%
GRAHAM	1	67	23	10	101	0.6%
GREENLEE	0	12	1	2	15	0.1%
LA PAZ	0	34	23	2	59	0.3%
MARICOPA	105	6,056	3,446	576	10,183	58.9%
MOHAVE	7	371	199	41	618	3.6%
NAVAJO	3	173	89	15	280	1.6%
PIMA	44	1,884	1,081	173	3,182	18.4%
PINAL	12	592	298	63	965	5.6%
SANTA CRUZ	0	47	21	6	74	0.4%
YAVAPAI	7	337	143	40	527	3.0%
YUMA	3	240	112	28	383	2.2%
STATEWIDE	188	10,413	5,691	1,018	17,310	100.0%
% OF TOTAL	1.1%	60.1%	32.9%	5.9%	100.0%	

TABLE 9
NUMBER OF REPORTS ASSIGNED FOR INVESTIGATION BY TYPE OF MALTREATMENT
BY COUNTY FOR PERIOD OF OCTOBER 1, 2007 THROUGH MARCH 31, 2008

COUNTY	EMOTIONAL ABUSE	NEGLECT	PHYSICAL ABUSE	SEXUAL ABUSE	TOTAL	% OF TOTAL
APACHE	1	53	19	6	79	0.5%
COCHISE	5	281	147	23	456	2.6%
COCONINO	3	197	116	25	341	2.0%
GILA	2	100	40	6	148	0.8%
GRAHAM	2	44	32	2	80	0.5%
GREENLEE	0	15	6	2	23	0.1%
LA PAZ	0	31	20	4	55	0.3%
MARICOPA	94	5,910	3,634	571	10,209	58.6%
MOHAVE	8	354	181	28	571	3.3%
NAVAJO	3	147	65	12	227	1.3%
PIMA	48	1,936	1,076	171	3,231	18.6%
PINAL	12	590	320	56	978	5.6%
SANTA CRUZ	1	58	27	6	92	0.5%
YAVAPAI	9	311	147	39	506	2.9%
YUMA	5	272	124	16	417	2.4%
STATEWIDE	193	10,299	5,954	967	17,413	100.0%
% OF TOTAL	1.1%	59.1%	34.2%	5.6%	100.0%	

During this reporting period, there were 17,310 reports assigned for investigation. Of these, CPS completed 10,064 investigations or 58.1 percent. Investigations not completed remain open when the investigation is still in process, when the CPS specialist is waiting for the results of a law enforcement investigation and/or receipt of records that impact the investigation finding, or when the investigation has been completed but is waiting supervisory review and approval.

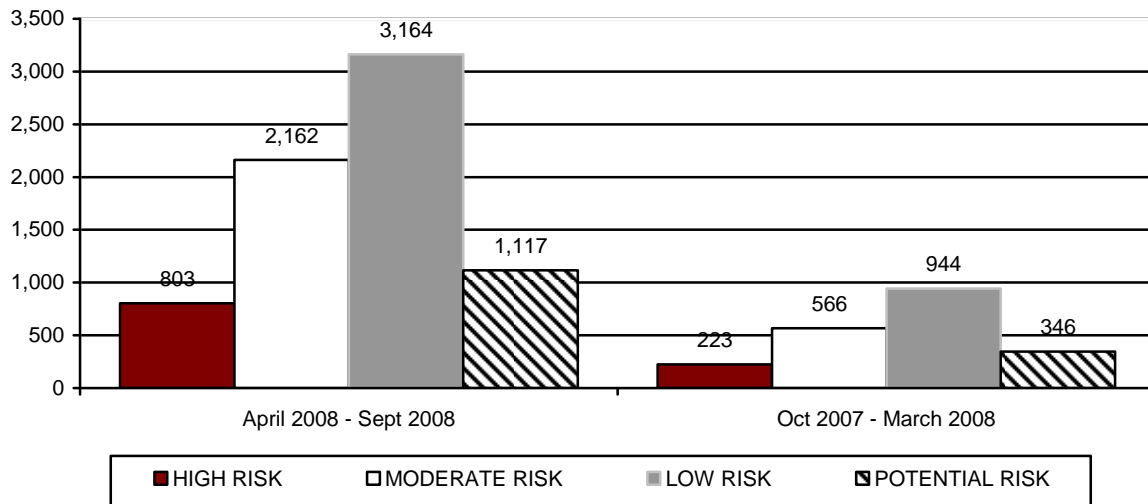
INVESTIGATIONS OF CHILD ABUSE AND NEGLECT

**TABLE 10
NUMBER OF REPORTS NOT RESPONDED TO BY RISK LEVEL AND COUNTY FOR
PERIOD OF APRIL 1, 2008 THROUGH SEPTEMBER 30, 2008**

COUNTY	HIGH	MODERATE	LOW	POTENTIAL	TOTAL	% OF TOTAL
APACHE	0	0	0	0	0	0.0%
COCHISE	0	0	0	0	0	0.0%
COCONINO	0	0	0	0	0	0.0%
GILA	0	0	0	0	0	0.0%
GRAHAM	0	0	0	0	0	0.0%
GREENLEE	0	0	0	0	0	0.0%
LA PAZ	0	0	0	0	0	0.0%
MARICOPA	0	0	0	0	0	0.0%
MOHAVE	0	0	0	0	0	0.0%
NAVAJO	0	0	0	0	0	0.0%
PIMA	0	0	0	0	0	0.0%
PINAL	0	0	0	0	0	0.0%
SANTA CRUZ	0	0	0	0	0	0.0%
YAVAPAI	0	0	0	0	0	0.0%
YUMA	0	0	0	0	0	0.0%
STATEWIDE	0	0	0	0	0	0.0%
% OF TOTAL	0.0%	0.0%	0.0%	0.0%	0.0%	

By statute, a random sample of reports not responded to for the period is required. In addition, short descriptions of these reports are also required. As there were no reports without a response for this reporting period, the sample of reports has been omitted.

**CHART 7
NUMBER OF REPORTS ASSIGNED FOR INVESTIGATION BY RISK LEVEL AND
REPORTING PERIOD FOR REPORTS STILL OPEN FOR INVESTIGATION**



**TABLE 11
NUMBER OF REPORTS BY RISK LEVEL AND COUNTY FOR REPORTS STILL OPEN FOR
INVESTIGATION FOR PERIOD OF APRIL 1, 2008 THROUGH SEPTEMBER 30, 2008**

COUNTY	HIGH	MODERATE	LOW	POTENTIAL	TOTAL	% OF TOTAL
APACHE	6	13	15	3	37	0.5%
COCHISE	14	32	50	22	118	1.6%
COCONINO	20	49	47	24	140	1.9%
GILA	9	33	36	10	88	1.2%
GRAHAM	9	30	34	15	88	1.2%
GREENLEE	1	2	4	3	10	0.1%
LA PAZ	0	3	5	4	12	0.2%
MARICOPA	467	1,167	1,797	604	4,035	55.7%
MOHAVE	37	123	148	45	353	4.9%
NAVAJO	15	31	40	19	105	1.5%
PIMA	134	422	601	241	1,398	19.3%
PINAL	66	167	250	82	565	7.8%
SANTA CRUZ	2	13	14	5	34	0.5%
YAVAPAI	8	30	53	17	108	1.5%
YUMA	15	47	70	23	155	2.1%
STATEWIDE	803	2,162	3,164	1,117	7,246	100.0%
% OF TOTAL	11.1%	29.8%	43.7%	15.4%	100.0%	

TABLE 12
NUMBER OF REPORTS BY RISK LEVEL AND COUNTY FOR REPORTS STILL OPEN FOR INVESTIGATION FOR PERIOD OF OCTOBER 1, 2007 THROUGH MARCH 31, 2008

COUNTY	HIGH	MODERATE	LOW	POTENTIAL	TOTAL	% OF TOTAL
APACHE	1	5	9	3	18	0.9%
COCHISE	6	10	13	8	37	1.8%
COCONINO	5	16	19	11	51	2.5%
GILA	3	9	10	2	24	1.2%
GRAHAM	1	3	12	6	22	1.1%
GREENLEE	0	3	3	2	8	0.4%
LA PAZ	1	1	1	0	3	0.1%
MARICOPA	112	271	483	163	1,029	49.4%
MOHAVE	19	51	71	21	162	7.8%
NAVAJO	0	6	9	2	17	0.8%
PIMA	40	149	244	108	541	26.0%
PINAL	33	36	60	20	149	7.2%
SANTA CRUZ	0	0	0	0	0	0.0%
YAVAPAI	0	2	5	0	7	0.3%
YUMA	2	4	5	0	11	0.5%
STATEWIDE	223	566	944	346	2,079	100.0%
% OF TOTAL	10.7%	27.2%	45.5%	16.6%	100.0%	

CHART 8
NUMBER OF REPORTS ASSIGNED FOR INVESTIGATION BY TYPE OF MALTREATMENT FOR REPORTS STILL OPEN FOR INVESTIGATION

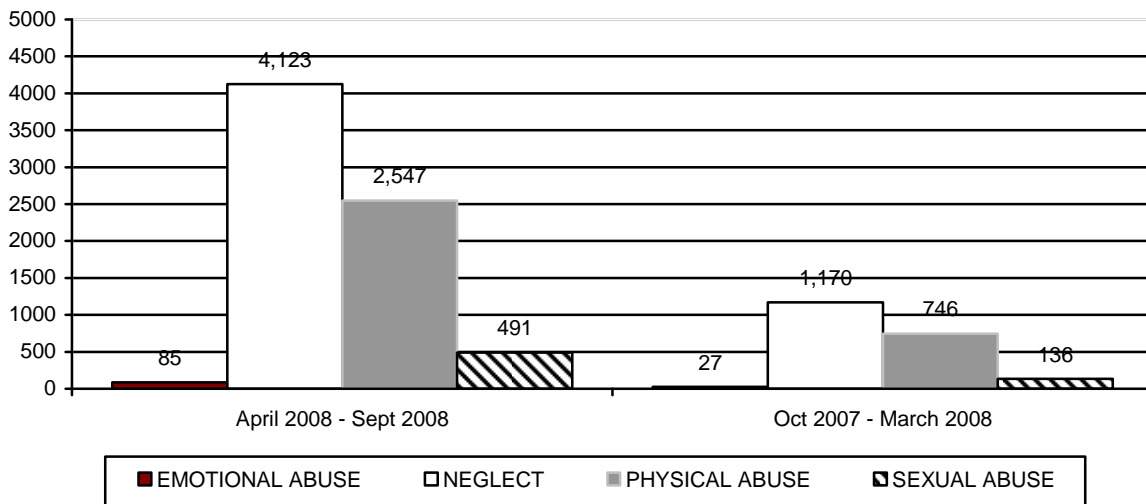


TABLE 13
NUMBER OF REPORTS BY TYPE OF MALTREATMENT AND COUNTY FOR REPORTS
STILL OPEN FOR INVESTIGATION FOR PERIOD OF
APRIL 1, 2008 THROUGH SEPTEMBER 30, 2008

COUNTY	EMOTIONAL ABUSE	NEGLECT	PHYSICAL ABUSE	SEXUAL ABUSE	TOTAL	% OF TOTAL
APACHE	0	24	12	1	37	0.5%
COCHISE	1	68	43	6	118	1.6%
COCONINO	0	88	43	9	140	1.9%
GILA	0	60	21	7	88	1.2%
GRAHAM	1	59	19	9	88	1.2%
GREENLEE	0	8	1	1	10	0.1%
LA PAZ	0	8	3	1	12	0.2%
MARICOPA	52	2,227	1,503	253	4,035	55.7%
MOHAVE	5	208	112	28	353	4.9%
NAVAJO	1	65	33	6	105	1.5%
PIMA	14	796	482	106	1,398	19.3%
PINAL	9	330	188	38	565	7.8%
SANTA CRUZ	0	18	13	3	34	0.5%
YAVAPAI	2	59	34	13	108	1.5%
YUMA	0	105	40	10	155	2.1%
STATEWIDE	85	4,123	2,547	491	7,246	100.0%
% OF TOTAL	1.2%	56.8%	35.2%	6.8%	100.0%	

TABLE 14
NUMBER OF REPORTS BY TYPE OF MALTREATMENT AND COUNTY FOR REPORTS
STILL OPEN FOR INVESTIGATION FOR PERIOD OF
OCTOBER 1, 2007 THROUGH MARCH 31, 2008

COUNTY	EMOTIONAL ABUSE	NEGLECT	PHYSICAL ABUSE	SEXUAL ABUSE	TOTAL	% OF TOTAL
APACHE	0	9	6	3	18	0.9%
COCHISE	0	23	9	5	37	1.8%
COCONINO	1	29	19	2	51	2.5%
GILA	0	18	5	1	24	1.2%
GRAHAM	1	8	12	1	22	1.1%
GREENLEE	0	4	3	1	8	0.4%
LA PAZ	0	2	1	0	3	0.1%
MARICOPA	13	545	412	59	1,029	49.4%
MOHAVE	3	90	57	12	162	7.8%
NAVAJO	0	12	3	2	17	0.8%
PIMA	8	326	167	40	541	26.0%
PINAL	1	93	49	6	149	7.2%
SANTA CRUZ	0	0	0	0	0	0.0%
YAVAPAI	0	4	0	3	7	0.3%
YUMA	0	7	3	1	11	0.5%
STATEWIDE	27	1,170	746	136	2,079	100.0%
% OF TOTAL	1.3%	56.3%	35.9%	6.5%	100.0%	

**CHART 9
NUMBER OF REPORTS ASSIGNED FOR INVESTIGATION WHERE A REMOVAL OCCURRED**

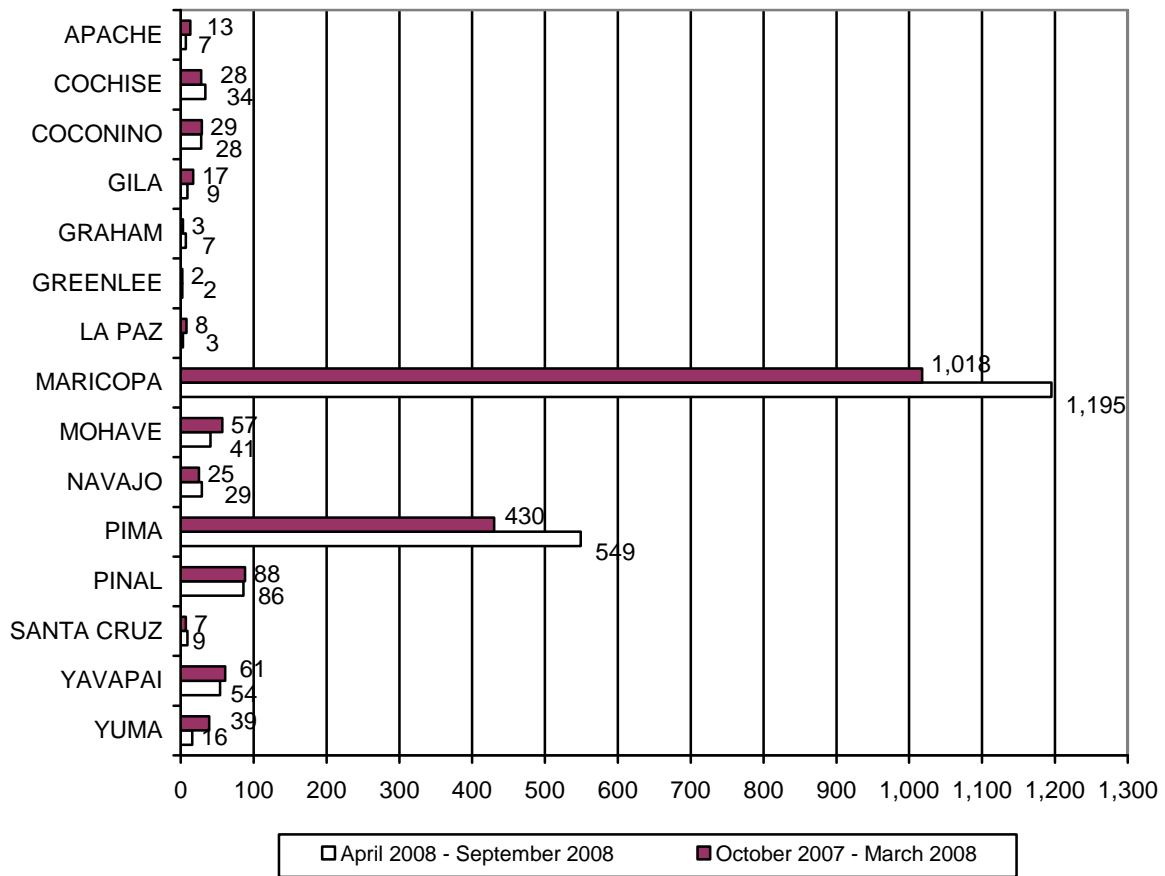


TABLE 15
NUMBER OF REPORTS ASSIGNED FOR INVESTIGATION BY COUNTY WHERE A
REMOVAL OCCURRED FOR THE PERIOD APRIL 1, 2008 THROUGH SEPTEMBER 30, 2008

COUNTY	NUMBER OF REPORTS ASSIGNED	NUMBER OF REPORTS ASSIGNED WITH A REMOVAL	% OF REPORTS WHERE A CHILD WAS PLACED IN OUT-OF-HOME CARE
APACHE	61	7	11.5%
COCHISE	401	34	8.5%
COCONINO	316	28	8.9%
GILA	145	9	6.2%
GRAHAM	101	7	6.9%
GREENLEE	15	2	13.3%
LA PAZ	59	3	5.1%
MARICOPA	10,183	1,195	11.7%
MOHAVE	618	41	6.6%
NAVAJO	280	29	10.4%
PIMA	3,182	549	17.3%
PINAL	965	86	8.9%
SANTA CRUZ	74	9	12.2%
YAVAPAI	527	54	10.3%
YUMA	383	16	4.2%
STATEWIDE	17,310	2,069	12.0%

TABLE 16
NUMBER OF REPORTS ASSIGNED FOR INVESTIGATION BY COUNTY WHERE A
REMOVAL OCCURRED FOR THE PERIOD OCTOBER 1, 2007 THROUGH MARCH 31, 2008

COUNTY	NUMBER OF REPORTS ASSIGNED	NUMBER OF REPORTS ASSIGNED WITH A REMOVAL	% OF REPORTS WHERE A CHILD WAS PLACED IN OUT-OF-HOME CARE
APACHE	79	13	16.5%
COCHISE	456	28	6.1%
COCONINO	341	29	8.5%
GILA	148	17	11.5%
GRAHAM	80	3	3.8%
GREENLEE	23	2	8.7%
LA PAZ	55	8	14.5%
MARICOPA	10,209	1,018	10.0%
MOHAVE	571	57	10.0%
NAVAJO	227	25	11.0%
PIMA	3,231	430	13.3%
PINAL	978	88	9.0%
SANTA CRUZ	92	7	7.6%
YAVAPAI	506	61	12.1%
YUMA	417	39	9.4%
STATEWIDE	17,413	1,825	10.5%

COMPLETED INVESTIGATIONS

Substantiated reports are reports where the Department has determined that at least one of the allegations in the report of abuse and neglect is true. The number of reports that are considered substantiated are a subset of the total number of reports that were received, investigated, and closed during the reporting period.

The preliminary number of CPS reports that are substantiated for this reporting period is 856. For the prior reporting period, the number of CPS reports that were assigned for investigation that resulted in substantiated findings was revised from 739 to 1,223 to reflect further results of parents’ rights to due process. For the current reporting period, 32.8 percent of substantiated investigative findings were classified as high risk, 39.4 percent as moderate risk, and 27.8 percent as low risk. Potential risk reports are not substantiated by CPS. For the prior reporting period, 28.5 percent of substantiated investigative findings were classified as high risk, 35.8 percent as moderate risk, and 35.7 percent as low risk.

- There were 14,579 reports received during the current reporting period that were subject to substantiation. This results in a preliminary substantiation rate of 6 percent for the current reporting period.
- There were 14,540 reports received during the prior reporting period that were subject to substantiation. This results in a 8 percent substantiation rate for the prior reporting period.

**CHART 10
SUBSTANTIATION RATE BY REPORTING PERIOD**

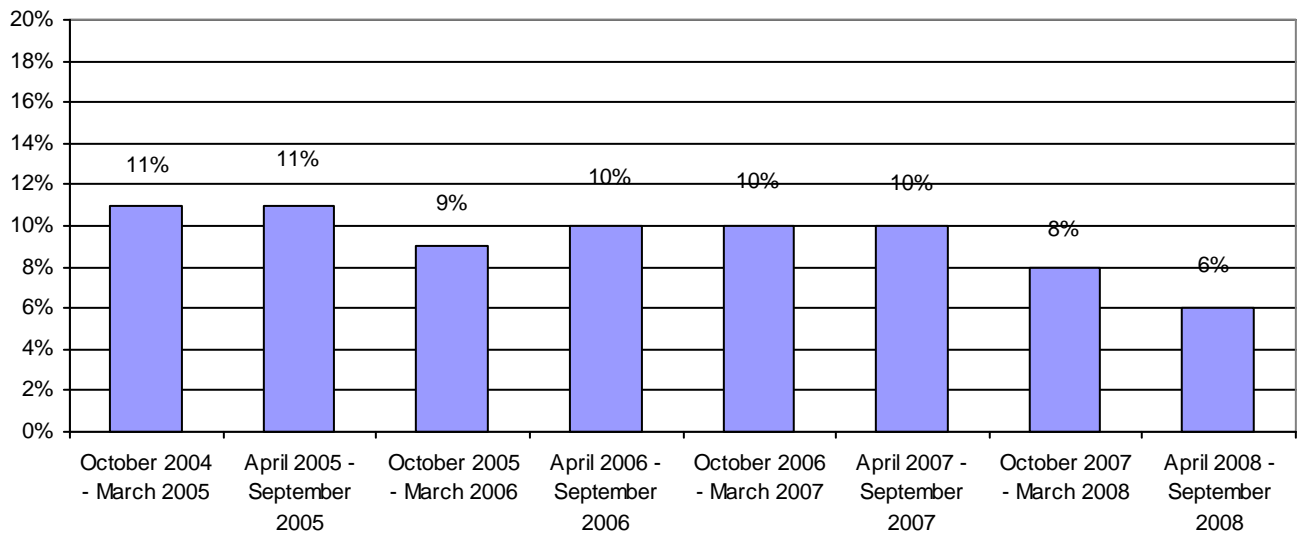


CHART 11
NUMBER OF REPORTS ASSIGNED FOR INVESTIGATION BY RISK LEVEL AND REPORTING PERIOD THAT RESULTED IN PROPOSED SUBSTANTIATION

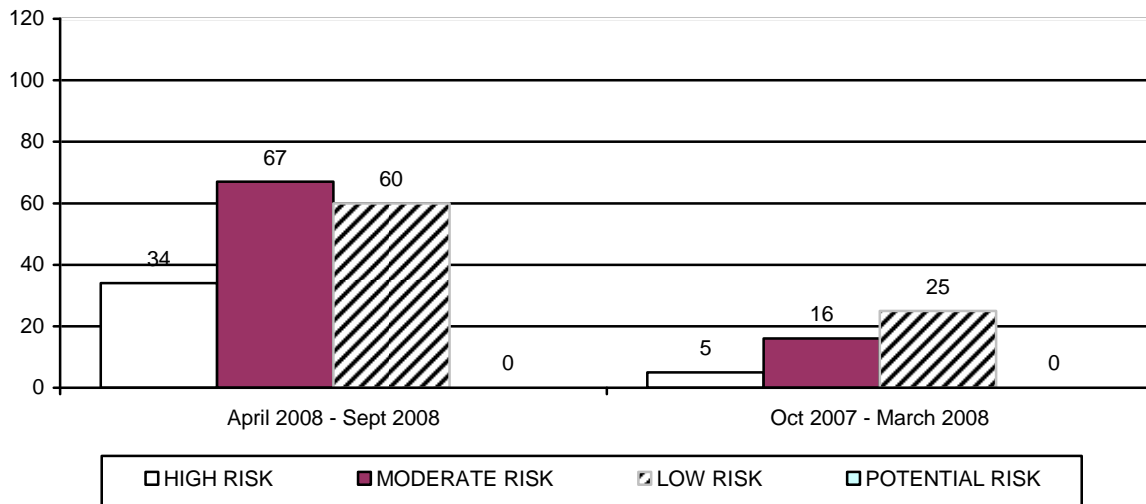


TABLE 17
NUMBER OF REPORTS ASSIGNED FOR INVESTIGATION BY RISK LEVEL AND COUNTY THAT RESULTED IN PROPOSED SUBSTANTIATION FOR PERIOD OF APRIL 1, 2008 THROUGH SEPTEMBER 30, 2008

COUNTY	HIGH	MODERATE	LOW	POTENTIAL	TOTAL	% OF TOTAL
APACHE	0	0	0	0	0	0.0%
COCHISE	1	0	2	0	3	1.9%
COCONINO	0	1	1	0	2	1.2%
GILA	0	0	0	0	0	0.0%
GRAHAM	0	0	0	0	0	0.0%
GREENLEE	0	0	0	0	0	0.0%
LA PAZ	0	0	0	0	0	0.0%
MARICOPA	25	48	42	0	115	71.4%
MOHAVE	0	0	0	0	0	0.0%
NAVAJO	1	4	4	0	9	5.6%
PIMA	5	9	10	0	24	14.9%
PINAL	1	2	0	0	3	1.9%
SANTA CRUZ	0	0	0	0	0	0.0%
YAVAPAI	1	3	1	0	5	3.1%
YUMA	0	0	0	0	0	0.0%
STATEWIDE	34	67	60	0	161	100.0%
% OF TOTAL	21.1%	41.6%	37.3%	0.0%	100.0%	

TABLE 18
NUMBER OF REPORTS ASSIGNED FOR INVESTIGATION BY RISK LEVEL AND COUNTY
THAT RESULTED IN PROPOSED SUBSTANTIATION FOR PERIOD OF
OCTOBER 1, 2007 THROUGH MARCH 31, 2008

COUNTY	HIGH	MODERATE	LOW	POTENTIAL	TOTAL	% OF TOTAL
APACHE	0	0	0	0	0	0.0%
COCHISE	0	0	0	0	0	0.0%
COCONINO	0	1	0	0	1	2.2%
GILA	0	0	1	0	1	2.2%
GRAHAM	0	0	0	0	0	0.0%
GREENLEE	0	0	0	0	0	0.0%
LA PAZ	0	0	0	0	0	0.0%
MARICOPA	5	10	18	0	33	71.6%
MOHAVE	0	1	0	0	1	2.2%
NAVAJO	0	0	0	0	0	0.0%
PIMA	0	3	5	0	8	17.4%
PINAL	0	0	0	0	0	0.0%
SANTA CRUZ	0	0	0	0	0	0.0%
YAVAPAI	0	0	1	0	1	2.2%
YUMA	0	1	0	0	1	2.2%
STATEWIDE	5	16	25	0	46	100.0%
% OF TOTAL	10.9%	34.8%	54.3%	0.0%	100.0%	

CHART 12
NUMBER OF REPORTS ASSIGNED FOR INVESTIGATION BY TYPE OF MALTREATMENT
THAT RESULTED IN PROPOSED SUBSTANTIATION

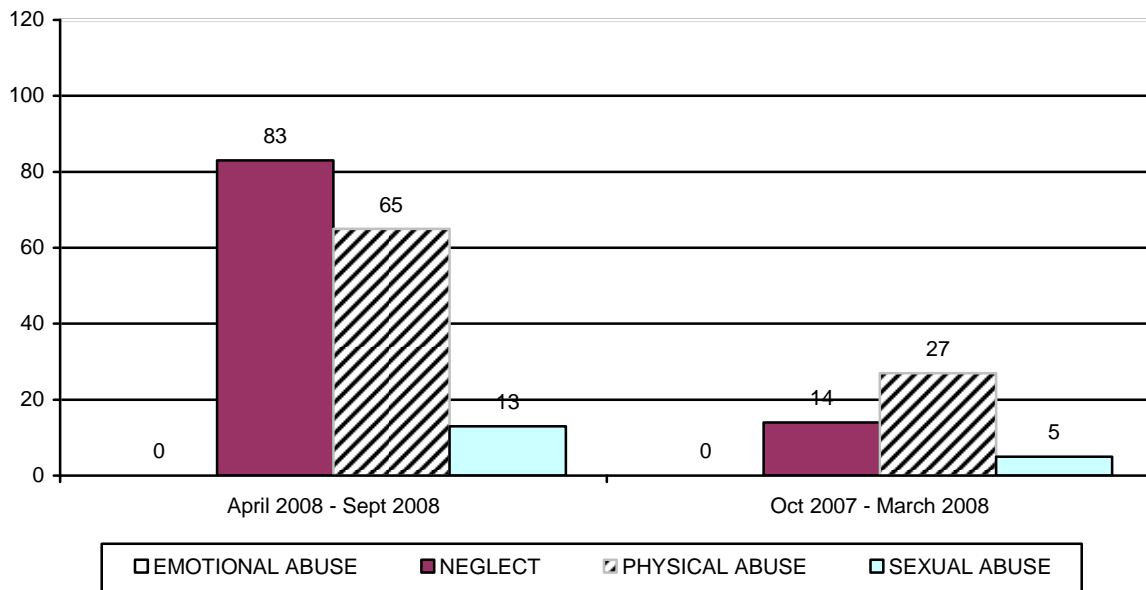


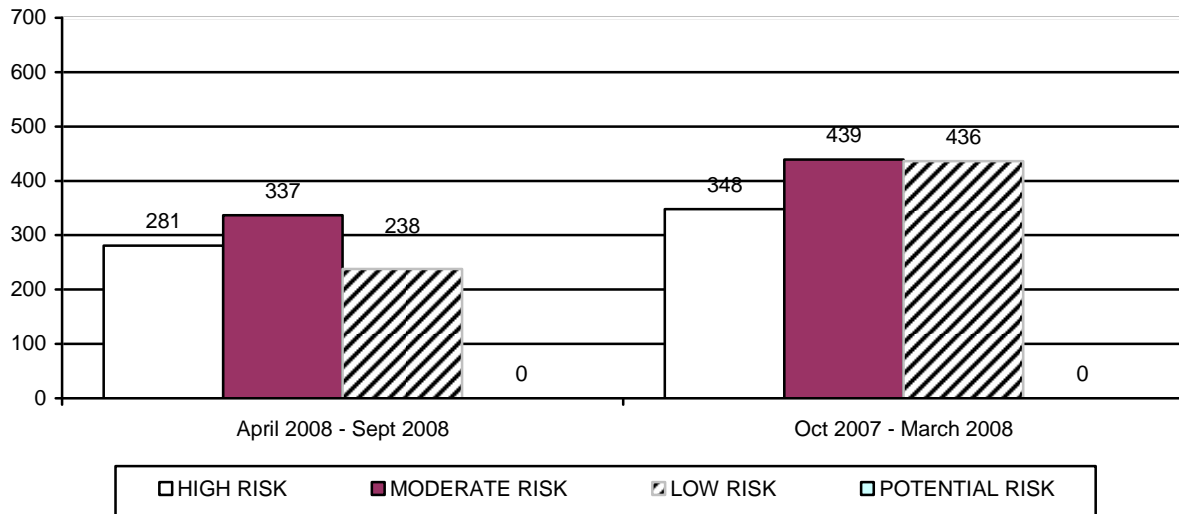
TABLE 19
NUMBER OF REPORTS ASSIGNED FOR INVESTIGATION BY TYPE OF MALTREATMENT
BY COUNTY THAT RESULTED IN PROPOSED SUBSTANTIATION FOR PERIOD OF
APRIL 1, 2008 THROUGH SEPTEMBER 30, 2008

COUNTY	EMOTIONAL ABUSE	NEGLECT	PHYSICAL ABUSE	SEXUAL ABUSE	TOTAL	% OF TOTAL
APACHE	0	0	0	0	0	0.0%
COCHISE	0	1	2	0	3	1.9%
COCONINO	0	1	1	0	2	1.2%
GILA	0	0	0	0	0	0.0%
GRAHAM	0	0	0	0	0	0.0%
GREENLEE	0	0	0	0	0	0.0%
LA PAZ	0	0	0	0	0	0.0%
MARICOPA	0	56	49	10	115	71.4%
MOHAVE	0	0	0	0	0	0.0%
NAVAJO	0	5	3	1	9	5.6%
PIMA	0	15	7	2	24	14.9%
PINAL	0	2	1	0	3	1.9%
SANTA CRUZ	0	0	0	0	0	0.0%
YAVAPAI	0	3	2	0	5	3.1%
YUMA	0	0	0	0	0	0.0%
STATEWIDE	0	83	65	13	161	100.0%
% OF TOTAL	0.0%	51.5%	40.4%	8.1%	100.0%	

TABLE 20
NUMBER OF REPORTS ASSIGNED FOR INVESTIGATION BY TYPE OF MALTREATMENT
BY COUNTY THAT RESULTED IN PROPOSED SUBSTANTIATION FOR PERIOD OF
OCTOBER 1, 2007 THROUGH MARCH 31, 2008

COUNTY	EMOTIONAL ABUSE	NEGLECT	PHYSICAL ABUSE	SEXUAL ABUSE	TOTAL	% OF TOTAL
APACHE	0	0	0	0	0	0.0%
COCHISE	0	0	0	0	0	0.0%
COCONINO	0	0	1	0	1	2.2%
GILA	0	1	0	0	1	2.2%
GRAHAM	0	0	0	0	0	0.0%
GREENLEE	0	0	0	0	0	0.0%
LA PAZ	0	0	0	0	0	0.0%
MARICOPA	0	11	18	4	33	71.6%
MOHAVE	0	0	1	0	1	2.2%
NAVAJO	0	0	0	0	0	0.0%
PIMA	0	1	6	1	8	17.4%
PINAL	0	0	0	0	0	0.0%
SANTA CRUZ	0	0	0	0	0	0.0%
YAVAPAI	0	0	1	0	1	2.2%
YUMA	0	1	0	0	1	2.2%
STATEWIDE	0	14	27	5	46	100.0%
% OF TOTAL	0.0%	30.4%	58.7%	10.9%	100.0%	

**CHART 13
NUMBER OF REPORTS ASSIGNED FOR INVESTIGATION BY RISK LEVEL AND
REPORTING PERIOD THAT RESULTED IN
SUBSTANTIATION**



**TABLE 21
NUMBER OF REPORTS ASSIGNED FOR INVESTIGATION BY RISK LEVEL AND COUNTY
THAT RESULTED IN SUBSTANTIATION FOR PERIOD OF
APRIL 1, 2008 THROUGH SEPTEMBER 30, 2008**

COUNTY	HIGH	MODERATE	LOW	POTENTIAL	TOTAL	% OF TOTAL
APACHE	0	1	5	0	6	0.7%
COCHISE	6	5	4	0	15	1.8%
COCONINO	3	4	3	0	10	1.2%
GILA	0	1	0	0	1	0.1%
GRAHAM	0	1	0	0	1	0.1%
GREENLEE	0	0	0	0	0	0.0%
LA PAZ	0	1	0	0	1	0.1%
MARICOPA	132	135	99	0	366	42.7%
MOHAVE	5	12	6	0	23	2.7%
NAVAJO	3	7	1	0	11	1.3%
PIMA	89	118	91	0	298	34.7%
PINAL	23	16	9	0	48	5.6%
SANTA CRUZ	1	1	1	0	3	0.4%
YAVAPAI	16	27	14	0	57	6.7%
YUMA	3	8	5	0	16	1.9%
STATEWIDE	281	337	238	0	856	100.0%
% OF TOTAL	32.8%	39.4%	27.8%	0.0%	100.0%	

TABLE 22
NUMBER OF REPORTS ASSIGNED FOR INVESTIGATION BY RISK LEVEL AND COUNTY
THAT RESULTED IN SUBSTANTIATION FOR PERIOD OF
OCTOBER 1, 2007 THROUGH MARCH 31, 2008

COUNTY	HIGH	MODERATE	LOW	POTENTIAL	TOTAL	% OF TOTAL
APACHE	3	4	1	0	8	0.7%
COCHISE	7	16	11	0	34	2.8%
COCONINO	6	5	12	0	23	1.9%
GILA	5	3	1	0	9	0.7%
GRAHAM	1	1	1	0	3	0.3%
GREENLEE	0	0	0	0	0	0.0%
LA PAZ	3	1	0	0	4	0.3%
MARICOPA	153	204	221	0	578	47.2%
MOHAVE	11	13	7	0	31	2.5%
NAVAJO	8	5	3	0	16	1.3%
PIMA	100	122	120	0	342	28.0%
PINAL	20	23	25	0	68	5.6%
SANTA CRUZ	2	3	2	0	7	0.6%
YAVAPAI	22	32	26	0	80	6.5%
YUMA	7	7	6	0	20	1.6%
STATEWIDE	348	439	436	0	1,223	100.0%
% OF TOTAL	28.5%	35.8%	35.7%	0.0%	100.0%	

CHART 14
NUMBER OF REPORTS ASSIGNED FOR INVESTIGATION BY TYPE OF MALTREATMENT
THAT RESULTED IN SUBSTANTIATION

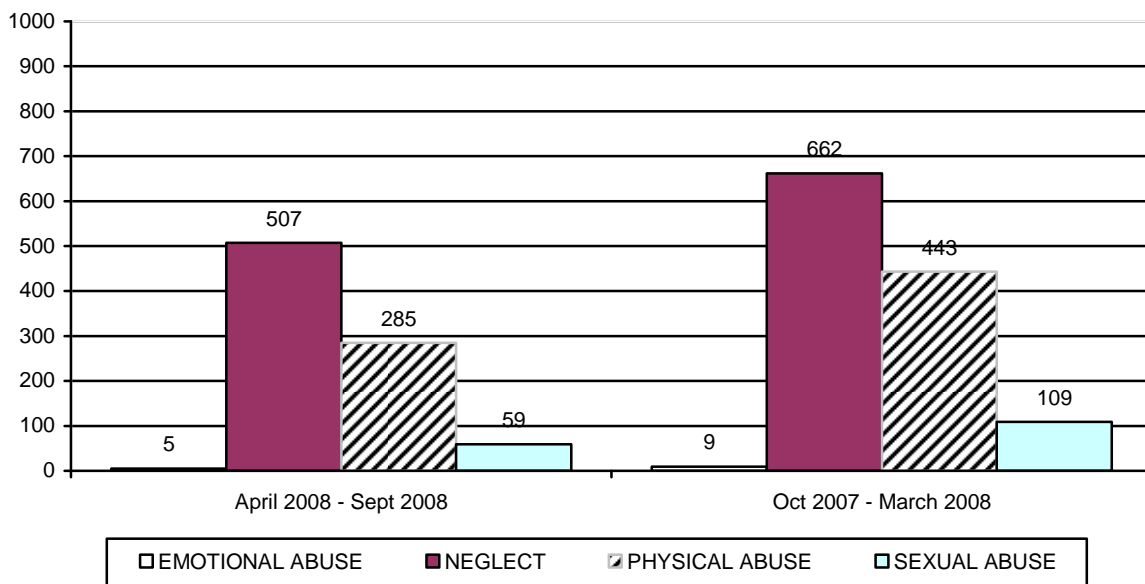


TABLE 23
NUMBER OF REPORTS ASSIGNED FOR INVESTIGATION BY TYPE OF MALTREATMENT
BY COUNTY THAT RESULTED IN SUBSTANTIATION FOR PERIOD OF
APRIL 1, 2008 THROUGH SEPTEMBER 30, 2008

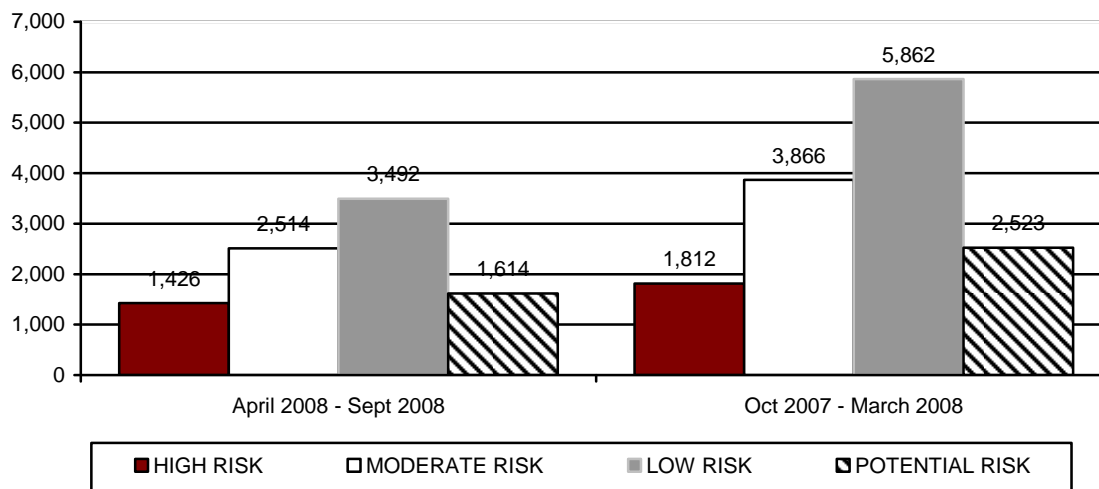
COUNTY	EMOTIONAL ABUSE	NEGLECT	PHYSICAL ABUSE	SEXUAL ABUSE	TOTAL	% OF TOTAL
APACHE	0	3	3	0	6	0.7%
COCHISE	0	11	3	1	15	1.8%
COCONINO	0	4	5	1	10	1.2%
GILA	0	1	0	0	1	0.1%
GRAHAM	0	1	0	0	1	0.1%
GREENLEE	0	0	0	0	0	0.0%
LA PAZ	0	0	0	1	1	0.1%
MARICOPA	1	189	146	30	366	42.7%
MOHAVE	0	14	5	4	23	2.7%
NAVAJO	0	7	3	1	11	1.3%
PIMA	2	201	81	14	298	34.7%
PINAL	1	29	15	3	48	5.6%
SANTA CRUZ	0	1	2	0	3	0.4%
YAVAPAI	1	41	13	2	57	6.7%
YUMA	0	5	9	2	16	1.9%
STATEWIDE	5	507	285	59	856	100.0%
% OF TOTAL	0.6%	59.2%	33.3%	6.9%	100.0%	

TABLE 24
NUMBER OF REPORTS ASSIGNED FOR INVESTIGATION BY TYPE OF MALTREATMENT
BY COUNTY THAT RESULTED IN SUBSTANTIATION FOR PERIOD OF
OCTOBER 1, 2007 THROUGH MARCH 31, 2008

COUNTY	EMOTIONAL ABUSE	NEGLECT	PHYSICAL ABUSE	SEXUAL ABUSE	TOTAL	% OF TOTAL
APACHE	1	5	1	1	8	0.7%
COCHISE	1	17	14	2	34	2.8%
COCONINO	0	13	8	2	23	1.9%
GILA	0	7	2	0	9	0.7%
GRAHAM	0	1	2	0	3	0.3%
GREENLEE	0	0	0	0	0	0.0%
LA PAZ	0	3	1	0	4	0.3%
MARICOPA	3	256	256	63	578	47.2%
MOHAVE	0	18	11	2	31	2.5%
NAVAJO	0	12	3	1	16	1.3%
PIMA	4	224	88	26	342	28.0%
PINAL	0	36	26	6	68	5.6%
SANTA CRUZ	0	4	3	0	7	0.6%
YAVAPAI	0	54	21	5	80	6.5%
YUMA	0	12	7	1	20	1.6%
STATEWIDE	9	662	443	109	1,223	100.0%
% OF TOTAL	0.7%	54.2%	36.2%	8.9%	100.0%	

The preliminary number of CPS investigations that resulted in an unsubstantiated finding for this reporting period was 9,046. For the prior reporting period, the number of CPS reports that were unsubstantiated was revised from 9,814 to 14,063 to reflect updated information in the CHILDS case management information system. For the prior reporting period, 12.9 percent of unsubstantiated reports were classified as high risk, 27.5 percent as moderate risk, 41.7 percent as low risk, and 17.9 percent as potential risk. Just over one percent of these unsubstantiated reports related to emotional abuse, 65.5 percent to neglect, 29.6 percent to physical abuse, and 3.6 percent to sexual abuse.

**CHART 15
NUMBER OF REPORTS ASSIGNED FOR INVESTIGATION BY RISK LEVEL AND REPORTING PERIOD THAT RESULTED IN UNSUBSTANTIATION**



**TABLE 25
NUMBER OF REPORTS ASSIGNED FOR INVESTIGATION BY RISK LEVEL AND COUNTY THAT RESULTED IN UNSUBSTANTIATION FOR PERIOD OF APRIL 1, 2008 THROUGH SEPTEMBER 30, 2008**

COUNTY	HIGH	MODERATE	LOW	POTENTIAL	TOTAL	% OF TOTAL
APACHE	2	4	11	1	18	0.2%
COCHISE	26	90	105	44	265	2.9%
COCONINO	35	48	57	24	164	1.8%
GILA	5	21	20	10	56	0.6%
GRAHAM	0	6	4	2	12	0.1%
GREENLEE	1	1	2	1	5	0.1%
LA PAZ	7	13	16	10	46	0.5%
MARICOPA	997	1,535	2,118	1,016	5,666	62.6%
MOHAVE	40	76	98	28	242	2.7%
NAVAJO	26	40	65	24	155	1.7%
PIMA	168	387	615	292	1,462	16.2%
PINAL	48	98	136	67	349	3.9%
SANTA CRUZ	7	11	13	6	37	0.4%
YAVAPAI	30	120	153	54	357	4.0%
YUMA	34	64	79	35	212	2.3%
STATEWIDE	1,426	2,514	3,492	1,614	9,046	100.0%
% OF TOTAL	15.8%	27.8%	38.6%	17.8%	100.0%	

TABLE 26
NUMBER OF REPORTS ASSIGNED FOR INVESTIGATION BY RISK LEVEL AND COUNTY
THAT RESULTED IN UNSUBSTANTIATION FOR PERIOD OF
OCTOBER 1, 2007 THROUGH MARCH 30, 2008

COUNTY	HIGH	MODERATE	LOW	POTENTIAL	TOTAL	% OF TOTAL
APACHE	9	14	20	10	53	0.4%
COCHISE	35	117	163	69	384	2.7%
COCONINO	42	62	114	49	267	1.9%
GILA	12	31	58	13	114	0.8%
GRAHAM	8	17	22	8	55	0.4%
GREENLEE	1	2	7	5	15	0.1%
LA PAZ	6	14	21	8	49	0.4%
MARICOPA	1,203	2,417	3,440	1,508	8,568	60.9%
MOHAVE	50	98	164	65	377	2.7%
NAVAJO	34	48	75	37	194	1.4%
PIMA	202	603	1,078	457	2,340	16.6%
PINAL	113	194	315	138	760	5.4%
SANTA CRUZ	14	20	40	11	85	0.6%
YAVAPAI	32	127	188	70	417	3.0%
YUMA	51	102	157	75	385	2.7%
STATEWIDE	1,812	3,866	5,862	2,523	14,063	100.0%
% OF TOTAL	12.9%	27.5%	41.7%	17.9%	100.0%	

CHART 16
NUMBER OF REPORTS ASSIGNED FOR INVESTIGATION BY TYPE OF MALTREATMENT
THAT RESULTED IN UNSUBSTANTIATION BY REPORTING PERIOD

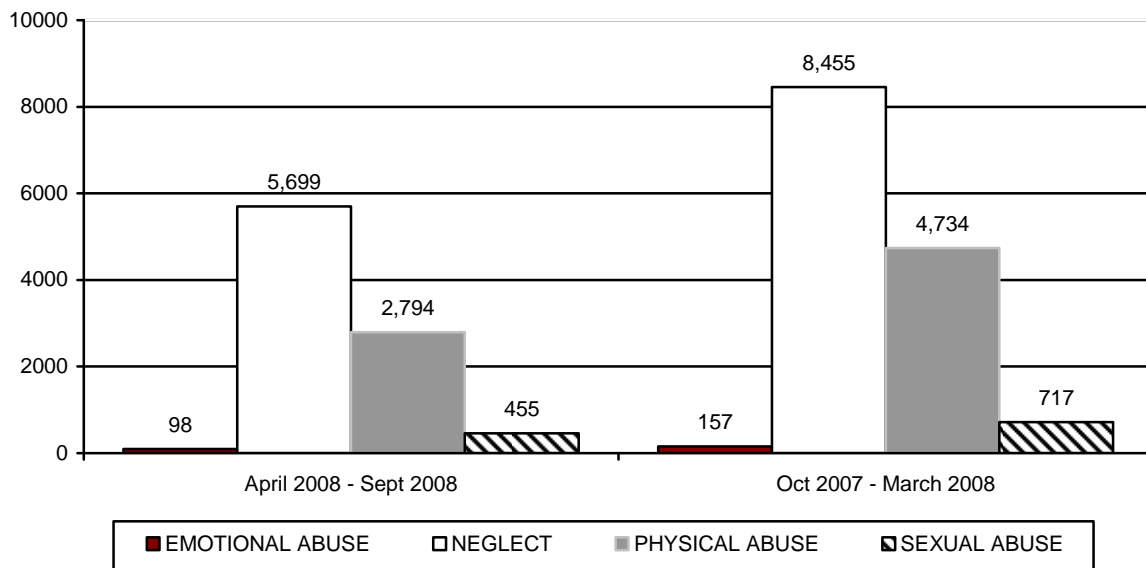


TABLE 27
NUMBER OF REPORTS ASSIGNED FOR INVESTIGATION BY TYPE OF MALTREATMENT
BY COUNTY THAT RESULTED IN UNSUBSTANTIATION FOR PERIOD OF
APRIL 1, 2008 THROUGH SEPTEMBER 30, 2008

COUNTY	EMOTIONAL ABUSE	NEGLECT	PHYSICAL ABUSE	SEXUAL ABUSE	TOTAL	% OF TOTAL
APACHE	0	14	3	1	18	0.2%
COCHISE	2	175	73	15	265	2.9%
COCONINO	2	107	40	15	164	1.8%
GILA	1	43	6	6	56	0.6%
GRAHAM	0	7	4	1	12	0.1%
GREENLEE	0	4	0	1	5	0.1%
LA PAZ	0	26	20	0	46	0.5%
MARICOPA	52	3,583	1,748	283	5,666	62.6%
MOHAVE	2	149	82	9	242	2.7%
NAVAJO	2	96	50	7	155	1.7%
PIMA	28	872	511	51	1,462	16.2%
PINAL	2	231	94	22	349	3.9%
SANTA CRUZ	0	28	6	3	37	0.4%
YAVAPAI	4	234	94	25	357	4.0%
YUMA	3	130	63	16	212	2.3%
STATEWIDE	98	5,699	2,794	455	9,046	100.0%
% OF TOTAL	1.1%	63.0%	30.9%	5.0%	100.0%	

TABLE 28
NUMBER OF REPORTS ASSIGNED FOR INVESTIGATION BY TYPE OF MALTREATMENT
BY COUNTY THAT RESULTED IN UNSUBSTANTIATION FOR PERIOD OF
OCTOBER 1, 2007 THROUGH MARCH 31, 2008

COUNTY	EMOTIONAL ABUSE	NEGLECT	PHYSICAL ABUSE	SEXUAL ABUSE	TOTAL	% OF TOTAL
APACHE	0	39	12	2	53	0.4%
COCHISE	4	241	123	16	384	2.7%
COCONINO	2	155	89	21	267	1.9%
GILA	2	74	33	5	114	0.8%
GRAHAM	1	35	18	1	55	0.4%
GREENLEE	0	11	3	1	15	0.1%
LA PAZ	0	26	19	4	49	0.4%
MARICOPA	78	5,097	2,947	446	8,568	60.9%
MOHAVE	5	246	112	14	377	2.7%
NAVAJO	3	123	59	9	194	1.4%
PIMA	36	1,388	813	103	2,340	16.6%
PINAL	11	460	245	44	760	5.4%
SANTA CRUZ	1	54	24	6	85	0.6%
YAVAPAI	9	254	123	31	417	3.0%
YUMA	5	252	114	14	385	2.7%
STATEWIDE	157	8,455	4,734	717	14,063	100.0%
% OF TOTAL	1.1%	60.1%	33.7%	5.1%	100.0%	

SAFE HAVEN INFANTS

There was one newborn infant delivered to Safe Haven providers during the April 2008 - September 2008 reporting period. This compares to no infants being delivered to Safe Haven providers during the October 2007 – March 2008 reporting period.

CHILDREN ENTERING OUT-OF-HOME CARE

During this reporting period, 4,546 children entered care as compared to 3,742 children for the October 2007 through March 2008 reporting period. Chart 17 displays children entering out-of-home care by reporting period. The number of children entering out-of-home placement through voluntary foster care agreements for this reporting period was 370, which represents 8.1 percent of the children entering care this reporting period.

**CHART 17
TOTAL CHILDREN ENTERING OUT-OF-HOME CARE BY REPORTING PERIOD**

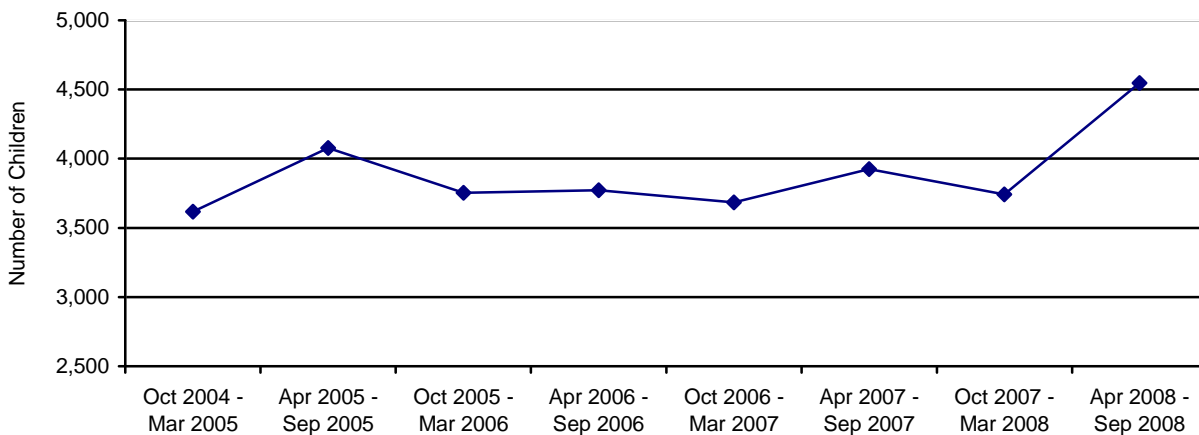


Table 29 shows the number of children entering out-of-home care through voluntary placements for the current reporting period by county. Voluntary foster care may be provided when the parents or legal guardians of a child have requested such assistance and have signed a legally binding written agreement, not to exceed 90 days, for the temporary placement of the child in foster care while risk factors are addressed to enable the child to live safely at home. A voluntary foster care agreement may be utilized only when the circumstances that brought the child into foster care are likely to be remedied within the 90 day period of time. A.R.S. §§8-806 authorizes the Department to provide voluntary foster care placement for children for a period not to exceed 90 days and no more than twice within 24 consecutive months.

**TABLE 29
NUMBER OF CHILDREN ENTERING OUT-OF-HOME CARE BY COUNTY WHO ARE
VOLUNTARY PLACEMENTS FOR CHILDREN UNDER THE AGE OF EIGHTEEN FOR THE
PERIOD OF APRIL 1, 2008 THROUGH SEPTEMBER 30, 2008**

COUNTY	NUMBER OF CHILDREN REMOVED	% OF TOTAL REMOVALS	NUMBER OF CHILDREN ENTERING OUT-OF-HOME CARE UNDER THE AGE OF EIGHTEEN WHO ARE VOLUNTARY PLACEMENTS	% OF CHILDREN REMOVED WHO ARE VOLUNTARY PLACEMENTS
APACHE	12	0.3%	3	25.0%
COCHISE	66	1.5%	5	7.6%
COCONINO	51	1.1%	12	23.5%
GILA	21	0.5%	0	0.0%
GRAHAM	22	0.5%	3	13.6%
GREENLEE	0	0.0%	0	0.0%
LA PAZ	4	0.1%	0	0.0%
MARICOPA	2,717	59.7%	218	8.0%
MOHAVE	96	2.1%	30	31.3%
NAVAJO	48	1.1%	8	16.7%
PIMA	1,155	25.4%	67	5.8%
PINAL	202	4.4%	2	1.0%
SANTA CRUZ	17	0.4%	2	11.8%
YAVAPAI	102	2.2%	10	9.8%
YUMA	33	0.7%	10	30.3%
STATEWIDE	4,546	100.0%	370	8.1%

**TABLE 30
NUMBER OF CHILDREN ENTERING OUT-OF-HOME CARE BY COUNTY WHO ARE
VOLUNTARY PLACEMENTS FOR CHILDREN UNDER THE AGE OF EIGHTEEN FOR THE
PERIOD OF OCTOBER 1, 2007 THROUGH MARCH 31, 2008**

COUNTY	NUMBER OF CHILDREN REMOVED	% OF TOTAL REMOVALS	NUMBER OF CHILDREN ENTERING OUT-OF-HOME CARE UNDER THE AGE OF EIGHTEEN WHO ARE VOLUNTARY PLACEMENTS	% OF CHILDREN REMOVED WHO ARE VOLUNTARY PLACEMENTS
APACHE	29	0.8%	8	27.6%
COCHISE	52	1.4%	2	3.8%
COCONINO	61	1.6%	11	18.0%
GILA	35	0.9%	0	0%
GRAHAM	11	0.3%	0	0%
GREENLEE	0	0.0%	0	0%
LA PAZ	15	0.4%	12	80.0%
MARICOPA	1,999	53.4%	232	11.6%
MOHAVE	108	2.9%	39	36.1%
NAVAJO	57	1.5%	8	14.0%
PIMA	935	25.0%	73	7.8%
PINAL	192	5.1%	4	2.1%
SANTA CRUZ	14	0.4%	1	7.1%
YAVAPAI	153	4.1%	7	4.6%
YUMA	81	2.2%	11	13.6%
STATEWIDE	3,742	100.0%	408	10.9%

The Department recognizes that the unwarranted re-entry into foster care is something to be avoided and continues to take steps to ensure that these re-entries are in the best interests of the child and family. In 2005, the Department began collaborating with the Chapin-Hall Center for Children on a measure to aid the Department in identifying key factors in re-entry into foster care. This will enable the Department to utilize cohort data and help to identify if changes are needed in policy or practices.

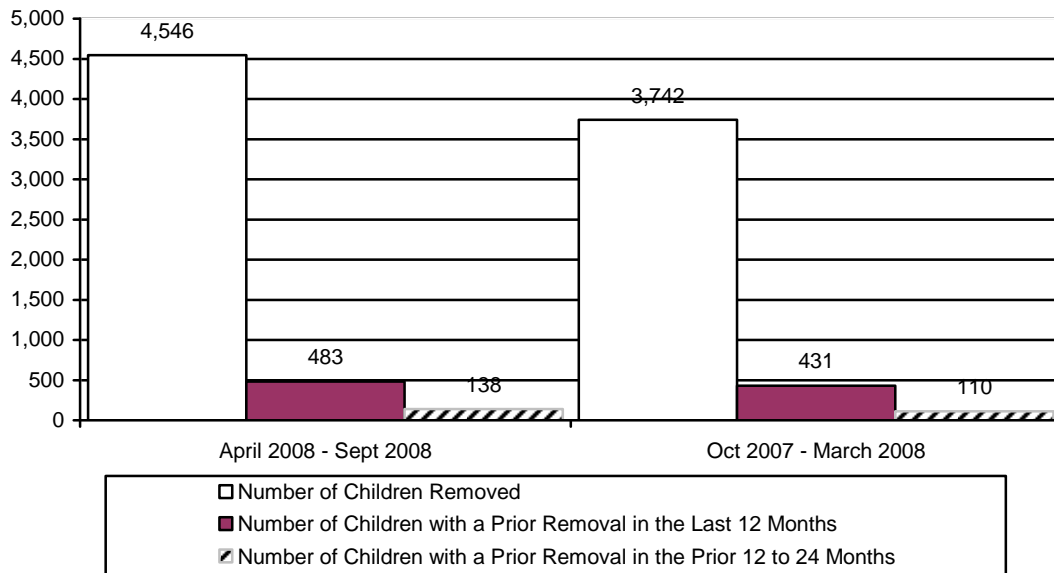
**TABLE 31
NUMBER OF CHILDREN ENTERING OUT-OF-HOME CARE BY COUNTY FOR THE
PERIOD OF APRIL 1, 2008 THROUGH SEPTEMBER 30, 2008**

COUNTY	NUMBER OF CHILDREN REMOVED	% OF TOTAL REMOVALS	NUMBER OF CHILDREN WITH A PRIOR REMOVAL IN THE LAST 12 MONTHS	% OF CHILDREN WITH A PRIOR REMOVAL IN THE LAST 12 MONTHS	NUMBER OF CHILDREN WITH A REMOVAL IN THE PRIOR 12 TO 24 MONTHS	% OF CHILDREN WITH A PRIOR REMOVAL IN THE PRIOR 12 TO 24 MONTHS
APACHE	12	0.3%	3	25.0%	0	0.0%
COCHISE	66	1.5%	2	3.0%	2	3.0%
COCONINO	51	1.1%	3	5.9%	2	3.9%
GILA	21	0.5%	1	4.8%	0	0.0%
GRAHAM	22	0.5%	0	0.0%	2	9.1%
GREENLEE	0	0.0%	0	0.0%	0	0.0%
LA PAZ	4	0.1%	0	0.0%	1	25.0%
MARICOPA	2,717	59.7%	283	10.4%	86	3.2%
MOHAVE	96	2.1%	11	11.5%	0	0.0%
NAVAJO	48	1.1%	0	0.0%	7	14.6%
PIMA	1,155	25.4%	134	11.6%	25	2.2%
PINAL	202	4.4%	33	16.3%	5	2.5%
SANTA CRUZ	17	0.4%	1	5.9%	0	0.0%
YAVAPAI	102	2.2%	10	9.8%	7	6.9%
YUMA	33	0.7%	2	6.1%	1	3.0%
STATEWIDE	4,546	100.0%	483	10.6%	138	3.0%

TABLE 32
NUMBER OF CHILDREN ENTERING OUT-OF-HOME CARE BY COUNTY FOR THE
PERIOD OF OCTOBER 1, 2007 THROUGH MARCH 31, 2008

COUNTY	NUMBER OF CHILDREN REMOVED	% OF TOTAL REMOVALS	NUMBER OF CHILDREN WITH A PRIOR REMOVAL IN THE LAST 12 MONTHS	% OF CHILDREN WITH A PRIOR REMOVAL IN THE LAST 12 MONTHS	NUMBER OF CHILDREN WITH A REMOVAL IN THE PRIOR 12 TO 24 MONTHS	% OF CHILDREN WITH A PRIOR REMOVAL IN THE PRIOR 12 TO 24 MONTHS
APACHE	29	0.8%	6	20.7%	1	3.4%
COCHISE	52	1.4%	1	1.9%	1	1.9%
COCONINO	61	1.6%	8	13.1%	2	3.3%
GILA	35	0.9%	1	2.9%	1	2.9%
GRAHAM	11	0.3%	1	9.1%	0	0.0%
GREENLEE	0	0.0%	0	0.0%	0	0.0%
LA PAZ	15	0.4%	2	13.3%	0	0.0%
MARICOPA	1,999	53.4%	237	11.9%	64	3.2%
MOHAVE	108	2.9%	28	25.9%	0	0.0%
NAVAJO	57	1.5%	7	12.3%	0	0.0%
PIMA	935	25.0%	100	10.7%	32	3.4%
PINAL	192	5.1%	20	10.4%	5	2.6%
SANTA CRUZ	14	0.4%	2	14.3%	0	0.0%
YAVAPAI	153	4.1%	12	7.8%	1	0.7%
YUMA	81	2.2%	6	7.4%	3	3.7%
STATEWIDE	3,742	100.0%	431	11.5%	110	2.9%

CHART 18
NUMBER OF CHILDREN ENTERING OUT-OF-HOME CARE BY REPORTING PERIOD



CHILDREN IN OUT-OF-HOME CARE

On September 30, 2008, there were 10,303 children in out-of-home care as compared to 9,721 children on March 31, 2008, an increase of 582 children. During this reporting period, 8,050 children or 78.1 percent were placed in family settings either with relatives or in foster homes. This compares to 7,462 or 76.8 percent of the children in the prior reporting period.

**CHART 19
NUMBER OF CHILDREN IN OUT-OF-HOME CARE ON THE LAST DAY OF THE REPORTING PERIOD BY REPORTING PERIOD**

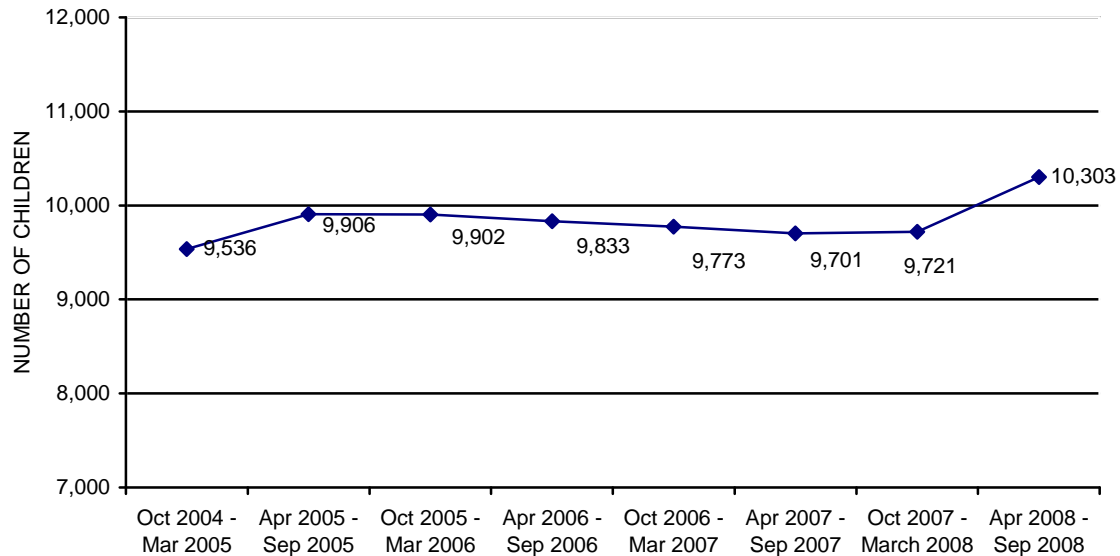
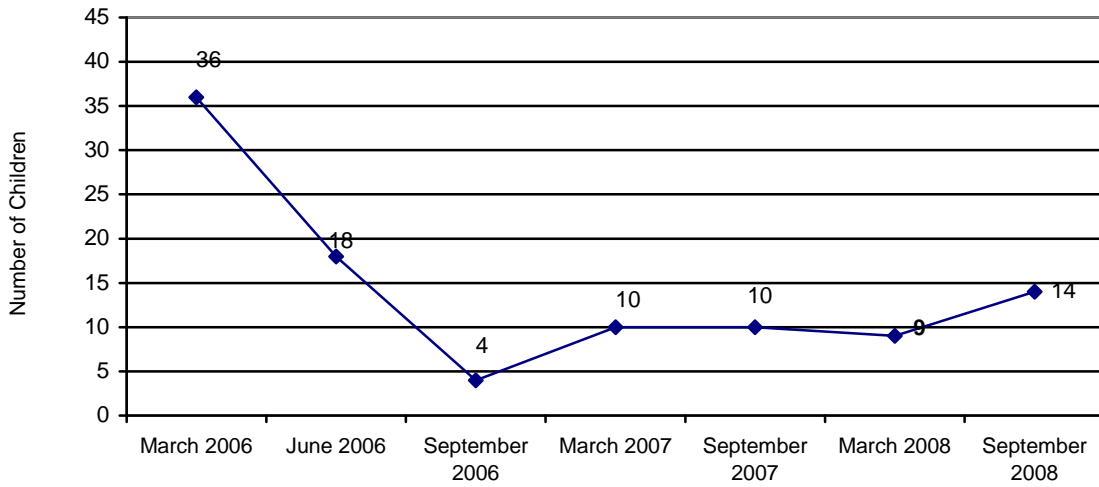


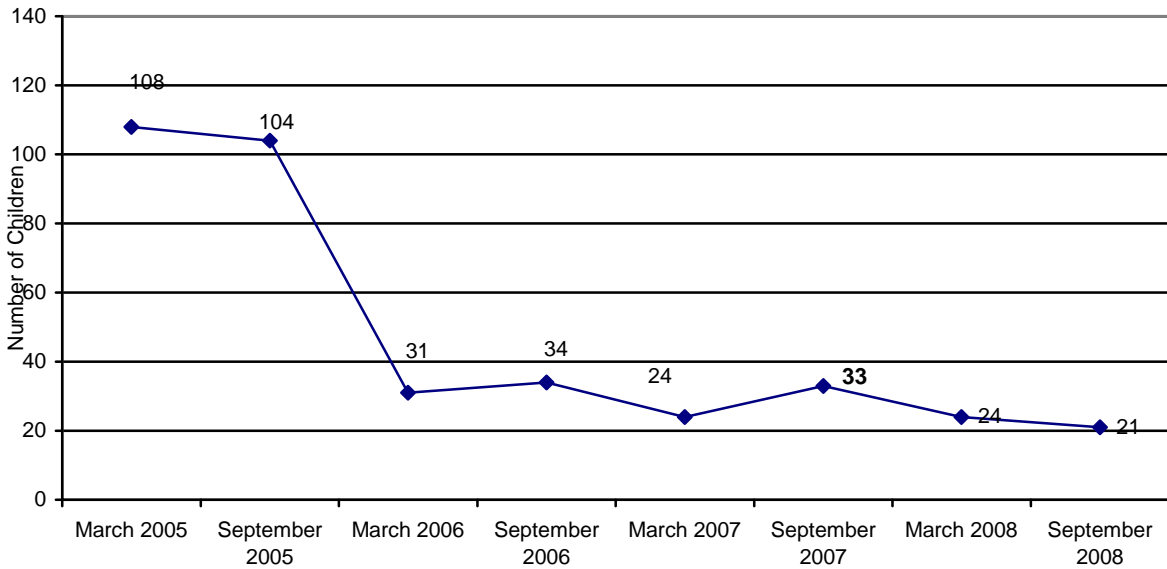
Chart 20 displays the decrease in the number of young children ages 0-6 placed in group homes. Comparing March 2006 to September 2008, the number of young children in group homes decreased by 22 children or 61.1 percent.

Chart 21 displays the decrease in the number of young children ages 0-3 placed in shelter care. Comparing March 2005 to September 2008, the number of young children in shelters decreased by 87 children or 80.6 percent. Chart 22 shows that the average length of time in shelter care has increased slightly; comparing September 2006 to September 2007, the average length of stay in shelter increased from 96.6 to 102.5 days, an increase of 5.9 days or 6.1 percent.

**CHART 20
THE NUMBER OF CHILDREN IN GROUP HOMES AGES 0 TO 6³**

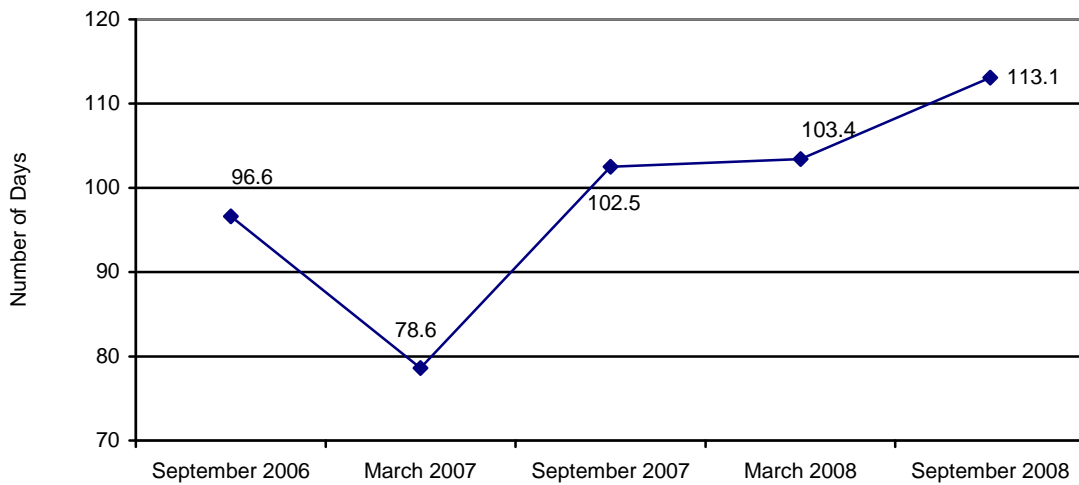


**CHART 21
THE NUMBER OF CHILDREN IN SHELTER CARE AGES 0 TO 3**



³ Excludes infants placed with their mothers and children placed in foster home group models

CHART 22
THE AVERAGE LENGTH OF STAY IN A SHELTER PLACEMENT FOR CHILDREN AGES 0 TO 3 IN A SHELTER PLACEMENT ON THE LAST DAY OF THE REPORTING PERIOD



The majority of children in out-of-home care fall within the 1-5 age range (31.9 percent) and the 13-17 age range (27.2 percent). The majority of children in out-of-home care are either Caucasian (39.3 percent) or Hispanic (35.6 percent), followed by African American at 14.0 percent.

CHART 23
THE NUMBER OF CHILDREN IN OUT-OF-HOME CARE BY AGE

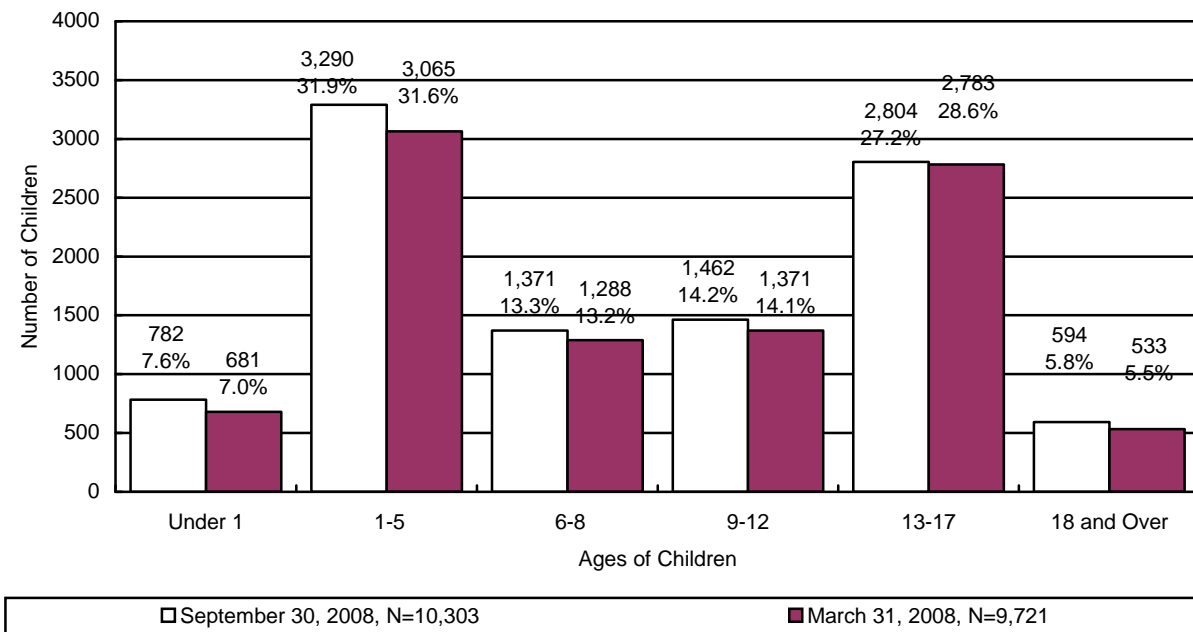
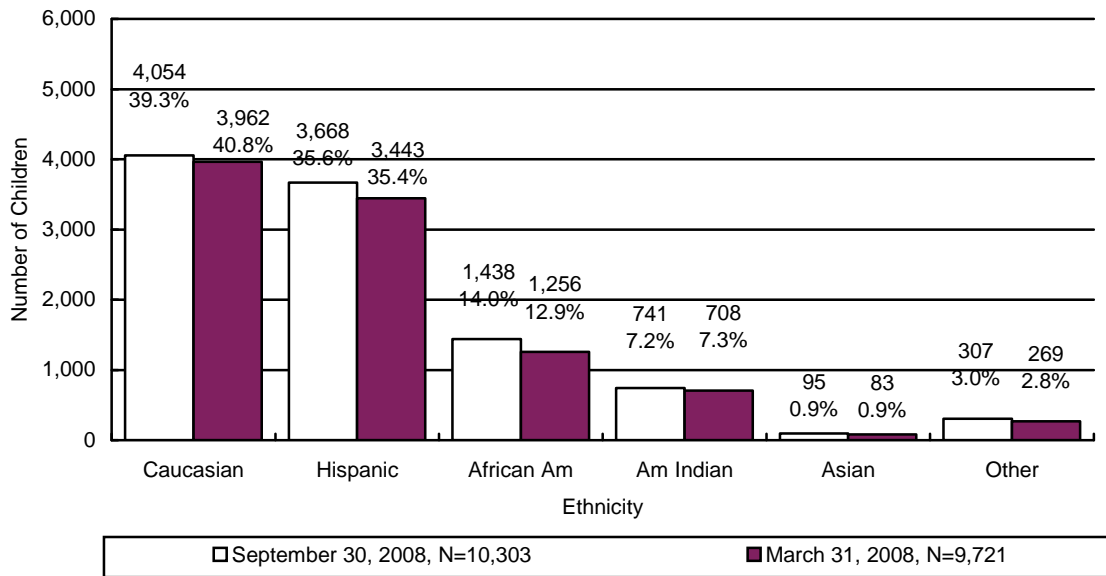


CHART 24
THE NUMBER OF CHILDREN IN OUT-OF-HOME CARE BY ETHNICITY



For 55.1 percent of the children in out-of-home care, family reunification remains the primary case plan goal. This is followed by: adoption, 18.0 percent; independent living, 11.7 percent; long-term foster care, 3.4 percent; live with other relative, 1.8 percent; and, guardianship at 0.5 percent. For the remaining 9.5 percent of the children, the case plan goal is in the process of development.

CHART 25
THE NUMBER OF CHILDREN IN OUT-OF-HOME CARE BY CASE PLAN GOAL

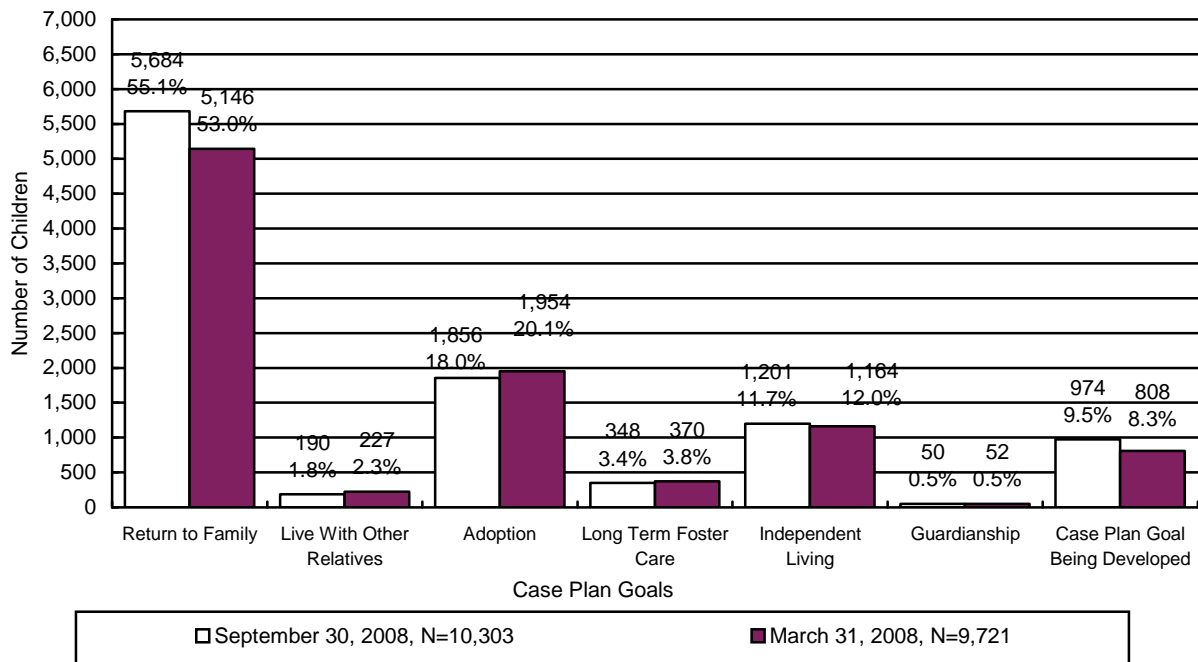
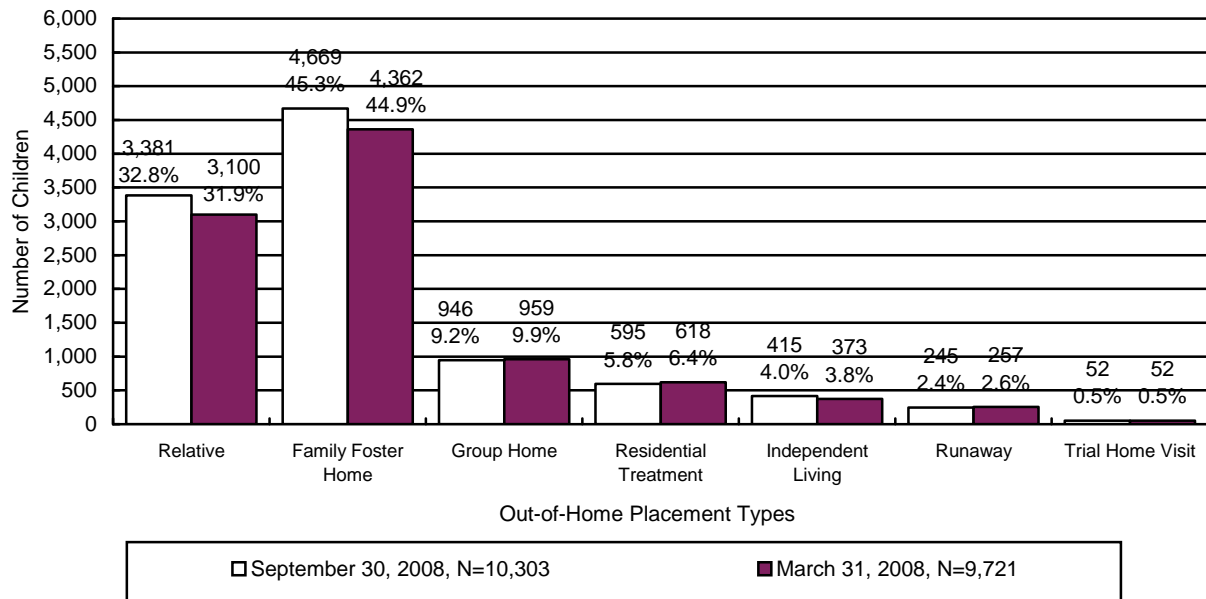


CHART 26
THE NUMBER OF CHILDREN IN OUT-OF-HOME CARE BY PLACEMENT TYPE



**TABLE 33
THE NUMBER OF CHILDREN IN OUT-OF-HOME CARE BY PLACEMENT TYPE AND AGE**

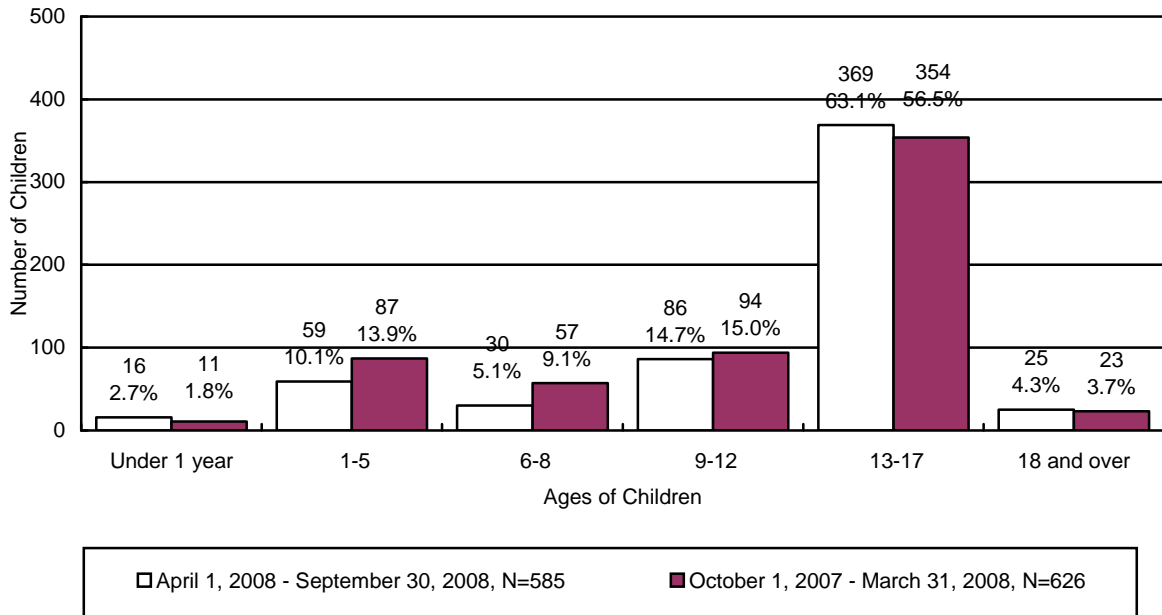
	RELATIVE	FAMILY FOSTER	GROUP HOME	RESIDENTIAL TREATMENT ⁴	INDEPENDENT LIVING	RUNAWAY ⁵	TRIAL HOME VISIT	TOTAL	% OF TOTAL
UNDER 1	273	488	6	10	0	2	3	782	7.5%
1	381	456	4	8	0	3	6	858	8.2%
2	318	438	4	2	0	0	7	769	7.4%
3	309	334	1	5	0	0	6	655	6.4%
4	228	280	3	4	0	0	3	518	5.0%
5	225	260	4	0	0	0	1	490	4.8%
6	219	265	5	4	0	0	3	496	4.8%
7	172	248	9	7	0	1	6	443	4.3%
8	183	229	17	3	0	0	0	432	4.2%
9	167	215	11	8	0	0	2	403	3.9%
10	131	185	29	8	0	0	2	355	3.5%
11	133	177	34	11	0	0	3	358	3.5%
12	107	168	45	24	0	2	0	346	3.4%
13	123	155	72	28	0	6	2	386	3.8%
14	98	156	101	65	0	10	2	432	4.2%
15	107	188	152	98	0	42	0	587	5.7%
16	108	183	165	116	0	66	3	641	6.2%
17	77	196	232	139	20	92	2	758	7.4%
18 AND OLDER	22	48	52	55	395	21	1	594	5.7%
TOTAL	3,381	4,669	946	595	415	245	52	10,303	100.0%
% OF TOTAL	32.8%	45.3%	9.2%	5.8%	4.0%	2.4%	0.5%	100.0%	

⁴ This category includes shelter, detention, and hospital placement types.

⁵ Of the children age twelve or less on runaway status, all were last reported to be with their parents. Police reports have been filed but the families have not been located.

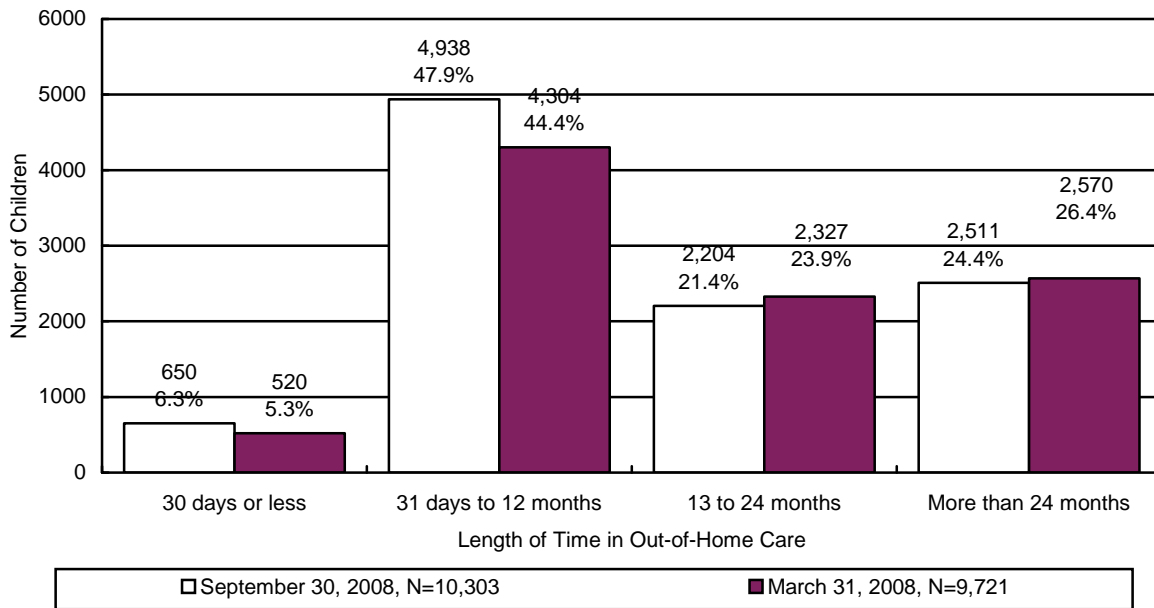
During the reporting period 585 children remained in a shelter or receiving home for more than 21 consecutive days. Chart 27 displays children in shelter greater than 21 days for the period of April 1, 2008 through September 30, 2008 and shows that 510 or 87.2 percent of the children were six years of age or older. In addition, 16 or 2.7 percent of the children were under one year old.

CHART 27
NUMBER AND PERCENTAGE OF CHILDREN IN SHELTER OR RECEIVING HOMES FOR MORE THAN 21 CONSECUTIVE DAYS BY AGE OF CHILD⁶



⁶ The chart displays children who spent more than 21 days in shelter during the period. This number differs from the other out-of-home charts as they display children in out-of-home care on the last day of the reporting period.

CHART 28
THE NUMBER OF CHILDREN IN OUT-OF-HOME CARE BY LENGTH OF TIME IN CARE



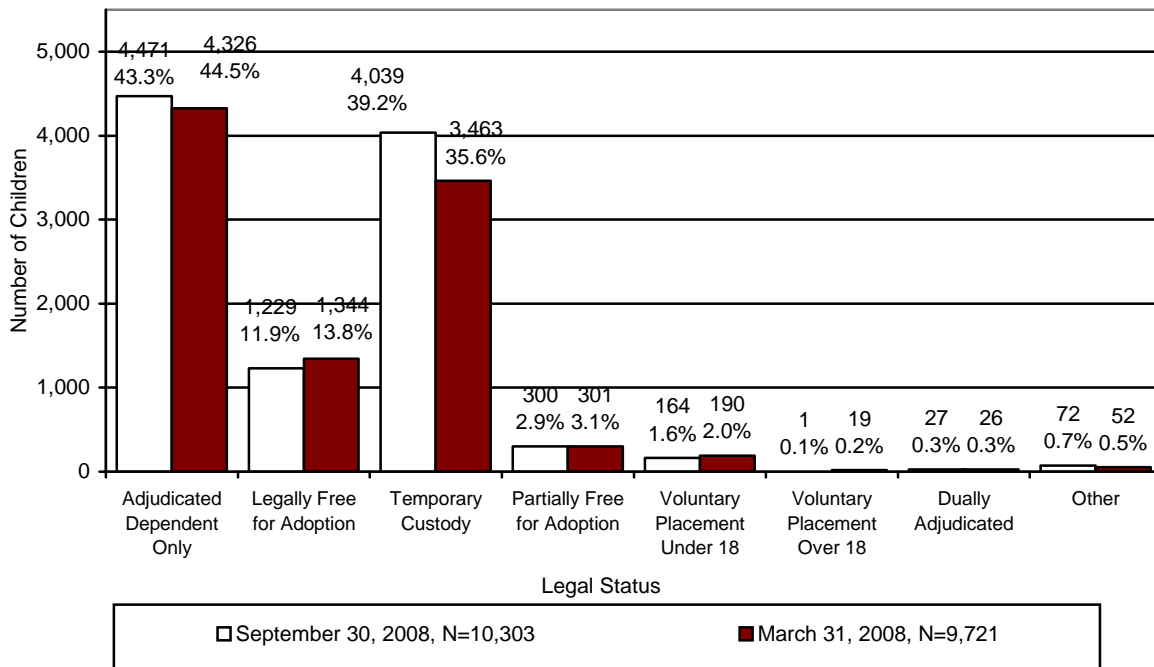
For the children in out-of-home care on September 30, 2008 the average number of placements was 3.0, the median number of placements was 2.0, and the range for the number of placements was 1 to 46 placements during their current removal episode.

TABLE 34
PLACEMENT INFORMATION FOR CHILDREN IN OUT-OF-HOME CARE ON SEPTEMBER 30, 2008

	Placements
Average	3.0
Median	2.0
Range Minimum	1
Range Maximum	46 ⁷

⁷ Some children are so damaged by the severity of the abuse they have suffered that they become unable to form meaningful relationships or to respond to services. These children tend to go through multiple placements with numerous individuals and agencies.

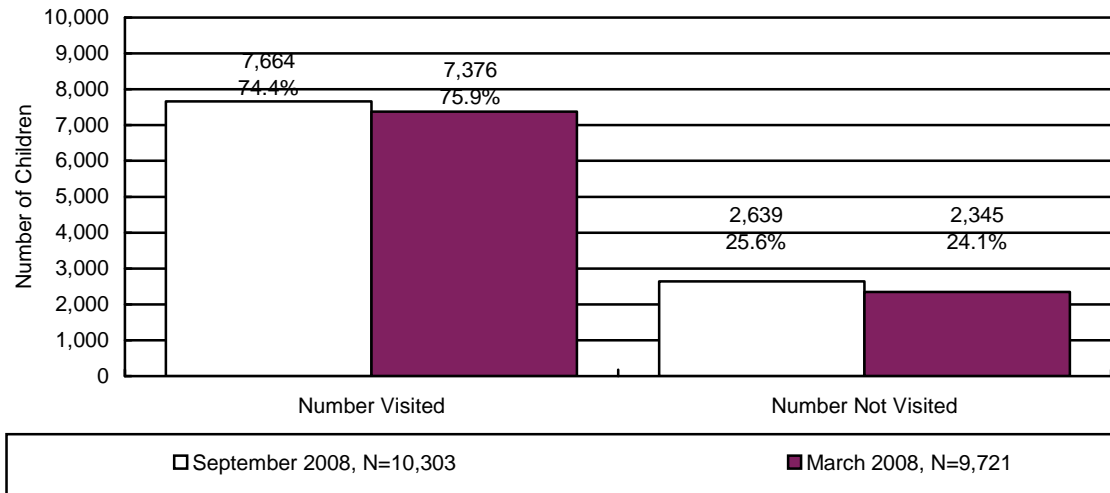
**CHART 29
CHILDREN IN OUT-OF-HOME CARE BY LEGAL STATUS**



At the end of the reporting period there were 10,303 children in out-of-home care who required visitation. Of these children, visitation was accurately documented in the automated system for 7,664 children. As displayed in Chart 30, during this reporting period, the percent of children receiving required visits by their CPS specialists decreased by 1.5 percent to 74.4 percent.

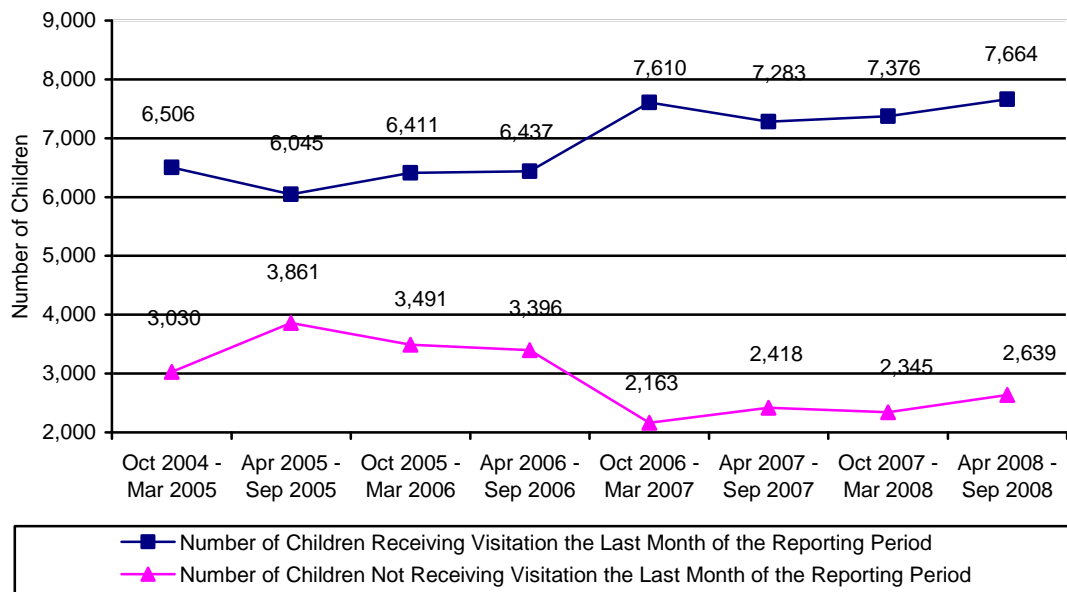
The required child visitation is performed monthly by DES case managers, contracted case managers, and/or other professionals as approved by a supervisor or as established by policy. The Department has verified that more children received the required visitation than is indicated in Chart 30. This information is clearly documented in the automated case notes. However, the Department is unable to compile and tabulate data based solely upon case note text. The Department continues to issue instructions to all direct service staff regarding the system requirements for capturing all visitations. A child was deemed to have received the required visitation if the child received the visitation during the last month of the reporting period.

CHART 30
THE NUMBER AND PERCENTAGE OF CHILDREN WHO RECEIVED THE REQUIRED VISITATION



According to Administration for Children, Youth and Families policy, case managers shall have face-to-face contact with all parents at least once a month, including any alleged parents and parents residing outside of the child’s home where the case plan goal is family reunification or remain with family. During the reporting period, there were 1,699 parents who had a child with the case plan goal of return home. Of those parents requiring visitation, 1,022 or 60.2 percent received the required visitation. The 60.2 percent visitation rate does not reflect attempted visitation where contact did not take place.

CHART 31
NUMBER OF CHILDREN RECEIVING AND NOT RECEIVING VISITATION BY REPORTING PERIOD



FOSTER HOMES

As of September 30, 2008, there were 3,615 licensed foster homes with 7,116 spaces available for Administration for Children, Youth and Families placements. Licensed foster homes include family foster homes, professional family foster homes, respite foster homes, receiving foster homes, and developmentally disabled homes with DCYF children placed in them.

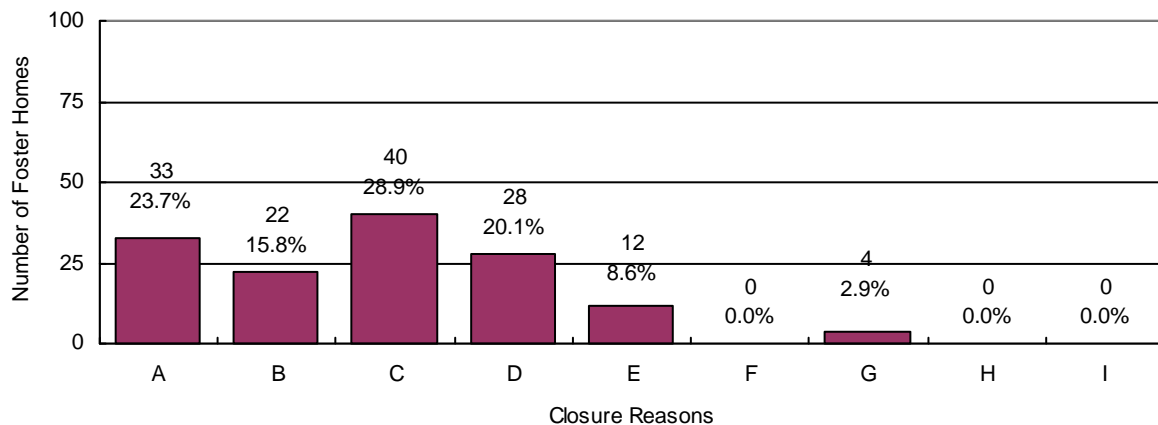
Foster home licenses specify the age range, gender and maximum number of children that can be placed in a home. Foster parents, in consultation with the licensing worker, decide the type of physical, behavioral, and psychological needs of children they can effectively parent based upon their own skill level, experiences, and desires.

As of September 30, 2008, there were 2,086 unused spaces within these foster homes. Of the unused spaces, a match between the available spaces and children’s needs was not possible.

During the reporting period, 162 new homes were licensed to provide foster care and 139 homes left the system. This compares to 794 new homes being licensed and 445 homes leaving the system for the period covering October 2007 through March 2008.

The chart below gives the reasons for foster home closures for the period of April 1, 2008 through September 30, 2008.

**CHART 32
REASON FOR FOSTER HOME CLOSURE FOR THE PERIOD OF
APRIL 1, 2008 THROUGH SEPTEMBER 30, 2008**

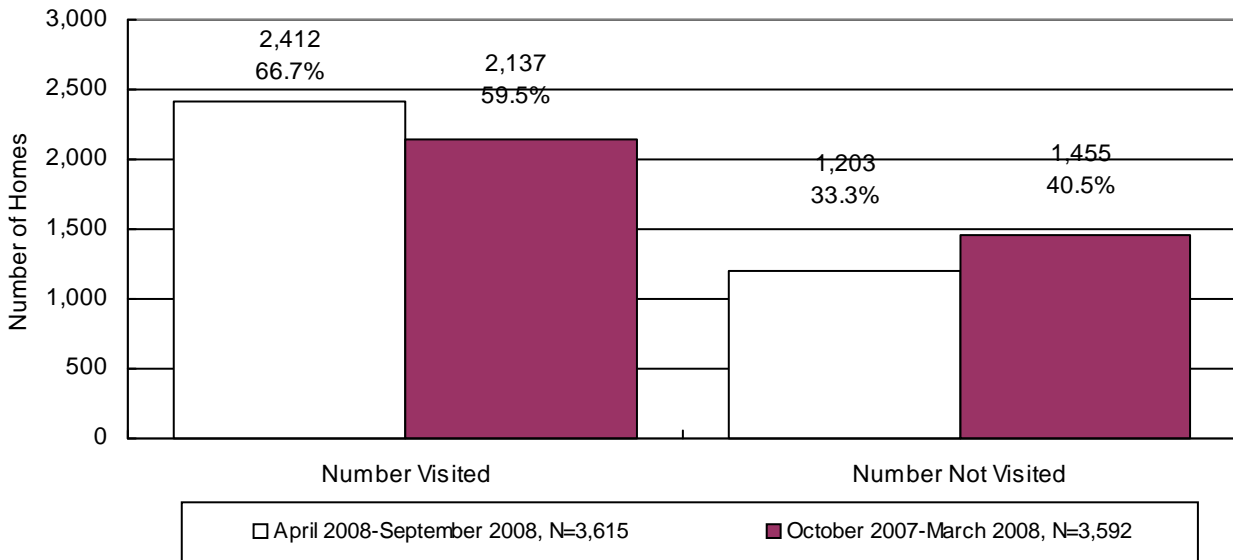


N=139

- A = Personal or Family Issues or Problems**
- B = Other or Foster Parent Did Not State Reason**
- C = Non-Compliance with Licensing Requirements**
- D = Adoption of Foster Child**
- E = Family Relocation**
- F = Child Left Care**
- G = Philosophical Disagreement**
- H = Behavior of Child**
- I = Transfer to Division of Developmental Disabilities**

During the reporting period, there were 3,615 foster homes that required visitation. Of the 3,615 foster homes requiring visitation, 2,412 foster homes received their required visitation. This compares to 2,137 or 59.5 percent of the foster homes that received the required visitation for the period October 2007 through March 2008. The Department believes that more foster homes received the required visitation than is indicated in the chart below. The underreporting of foster home visitation is attributable to the lack of automation being used in reporting the foster home visitation process. The Department recognizes this as a problem and is working to correct this issue.

**CHART 33
THE NUMBER AND PERCENTAGE OF FOSTER HOMES WHO RECEIVED THE
REQUIRED VISITATION***



*Required visitations to foster homes, for license monitoring purposes, are performed by licensing case managers.

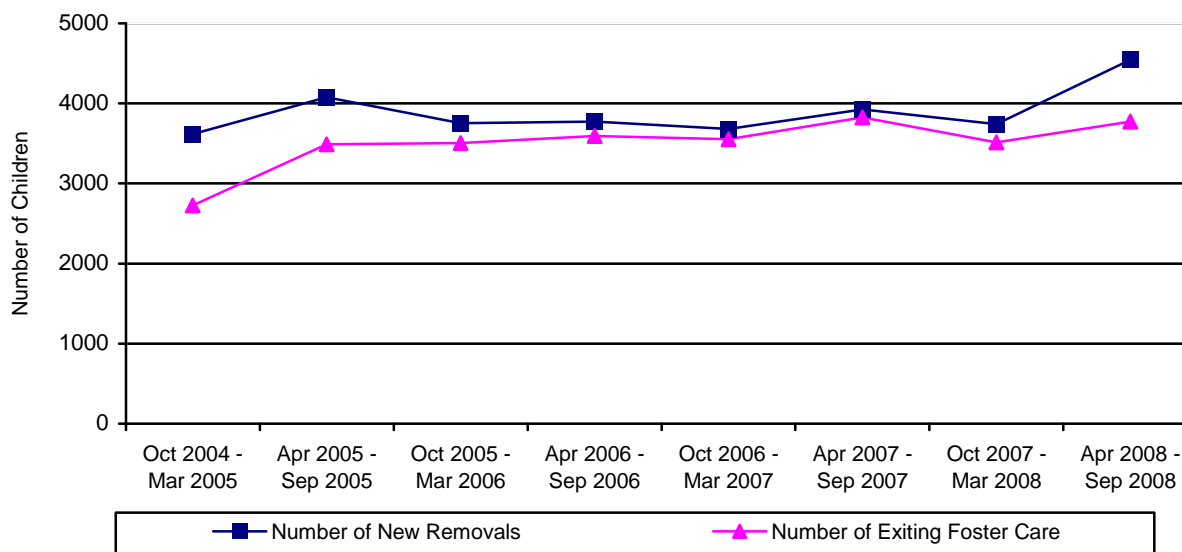
CHILDREN EXITING OUT-OF HOME CARE

During the reporting period, 3,773 children left the custody of the Department. This compares to 3,512 children exiting care during the prior reporting period. The comparison between the two reporting periods shows that 7.4 percent more children left care this reporting period for an increase of 261 children exiting care.

**TABLE 35
CHILDREN EXITING OUT-OF-HOME CARE BY PERIOD**

REPORTING PERIOD	NUMBER OF CHILDREN DISCHARGED	% CHANGE OVER PRIOR PERIOD
OCTOBER 2004 – MARCH 2005	2,726	-5.4%
APRIL 2005 – SEPTEMBER 2005	3,488	+28.0%
OCTOBER 2005 – MARCH 2006	3,506	+0.5%
APRIL 2006 – SEPTEMBER 2006	3,595	+2.5%
OCTOBER 2006 – MARCH 2007	3,553	-1.2%
APRIL 2007 – SEPTEMBER 2007	3,824	+7.6%
OCTOBER 2007 – MARCH 2008	3,512	-8.2%
APRIL 2008 – SEPTEMBER 2008	3,773	+7.4%

**CHART 34
CHILDREN ENTERING AND EXITING OUT-OF-HOME CARE BY REPORTING PERIOD**



The following nine tables depict the children who exited out-of-home care by the reason for leaving care. The tables display the following information: reasons the child left custody, their age, their ethnicity, the number of placements each child had, and the length of time in out-of-home care.

**TABLE 36
TOTAL NUMBER OF CHILDREN LEAVING DES CUSTODY FOR THE END OF THE
REPORTING PERIOD ENDING ON SEPTEMBER 30, 2008**

By Age	Number	Percentage
Under 1	223	5.9%
Ages 1 – 5	1,294	34.3%
Ages 6 – 8	533	14.1%
Ages 9 – 12	564	14.9%
Ages 13 – 17	832	22.1%
18 and Over	327	8.7%
Total	3,773	100.0%
Ethnicity	Number	Percentage
Caucasian	1,508	40.0%
Hispanic	1,404	37.2%
African American	428	11.3%
American Indian	287	7.6%
Asian	33	0.9%
Other	113	3.0%
Total	3,773	100.00%
By Number of Placements	Number	Percentage
One	2,095	55.5%
Two	740	19.6%
Three	358	9.5%
Four	211	5.6%
Five	114	3.0%
More than Five	255	6.8%
Total	3,773	100.0%
By Length of Time in Care	Number	Percentage
Less than 30 Days	1,096	29.1%
31 Days to 12 Months	986	26.1%
13 to 24 Months	844	22.4%
More than 24 Months	847	22.4%
Total	3,773	100.0%

	Average	Median
By Age	8.8	7.9
By Number of Placements	2.3	1.0
By Months of Time in Care	15.0	10.95

**TABLE 37
NUMBER AND PERCENTAGE OF CHILDREN LEAVING DES CUSTODY
FOR REASON OF "REUNIFICATION WITH PARENTS OR PRIMARY CARETAKER" FOR
THE REPORTING PERIOD ENDING SEPTEMBER 30, 2008**

By Age	Number	Percentage
Under 1	184	8.8%
Ages 1 - 5	674	32.5%
Ages 6 - 8	342	16.4%
Ages 9 - 12	346	16.6%
Ages 13 - 17	534	25.6%
18 and Over	3	0.1%
Total	2,083	100.0%
Ethnicity	Number	Percentage
Caucasian	822	39.5%
Hispanic	775	37.2%
African American	255	12.2%
American Indian	134	6.4%
Asian	20	1.0%
Other	77	3.7%
Total	2,083	100.0%
By Number of Placements	Number	Percentage
One	1,437	69.0%
Two	355	17.0%
Three	144	6.9%
Four	67	3.2%
Five	35	1.7%
More than Five	45	2.2%
Total	2,083	100.0%
By Length of Time in Care	Number	Percentage
Less than 30 Days	936	44.9%
31 Days to 12 Months	702	33.7%
13 to 24 Months	320	15.4%
More than 24 Months	125	6.0%
Total	2,083	100.0%

	Average	Median
By Age	8.1	7.5
By Number of Placements	1.6	1.0
By Months of Time in Care	7.0	2.1

**TABLE 38
NUMBER AND PERCENTAGE OF CHILDREN LEAVING DES CUSTODY
FOR REASON OF “LIVING WITH OTHER RELATIVES” FOR THE REPORTING PERIOD
ENDING SEPTEMBER 30, 2008**

By Age	Number	Percentage
Under 1	11	18.3%
Ages 1 - 5	13	21.7%
Ages 6 – 8	8	13.3%
Ages 9 - 12	5	8.3%
Ages 13 - 17	22	36.7%
18 and Over	1	1.7%
Total	60	100.0%
Ethnicity	Number	Percentage
Caucasian	21	35.0%
Hispanic	23	38.3%
African American	2	3.3%
American Indian	10	16.7%
Asian	3	5.0%
Other	1	1.7%
Total	60	100.0%
By Number of Placements	Number	Percentage
One	57	95.0%
Two	2	3.3%
Three	1	1.7%
Four	0	0.0%
Five	0	0.0%
More than Five	0	0.0%
Total	60	100.0%
By Length of Time in Care	Number	Percentage
Less than 30 Days	54	90.0%
31 Days to 12 Months	4	6.7%
13 to 24 Months	2	3.3%
More than 24 Months	0	0.0%
Total	60	100.0%

	Average	Median
By Age	8.8	7.6
By Number of Placements	1.1	1.0
By Months of Time in Care	0.8	0.1

**TABLE 39
NUMBER AND PERCENTAGE OF CHILDREN LEAVING DES
CUSTODY FOR REASON OF "ADOPTION" FOR THE REPORTING PERIOD
ENDING SEPTEMBER 30, 2008**

By Age	Number	Percentage
Under 1	8	1.0%
Ages 1 - 5	460	57.8%
Ages 6 - 8	134	16.8%
Ages 9 - 12	135	16.9%
Ages 13 - 17	60	7.5%
18 and Over	0	0.0%
Total	797	100.0%
Ethnicity	Number	Percentage
Caucasian	341	42.7%
Hispanic	312	39.1%
African American	81	10.2%
American Indian	51	6.4%
Asian	2	0.3%
Other	10	1.3%
Total	797	100.0%
By Number of Placements	Number	Percentage
One	267	33.5%
Two	253	31.7%
Three	129	16.2%
Four	74	9.3%
Five	35	4.4%
More than Five	39	4.9%
Total	797	100.0%
By Length of Time in Care	Number	Percentage
Less than 30 Days	0	0.0%
31 Days to 12 Months	23	2.9%
13 to 24 Months	288	36.1%
More than 24 Months	486	61.0%
Total	797	100.0%

	Average	Median
By Age	6.0	4.8
By Number of Placements	2.4	2.0
By Months of Time in Care	28.4	25.9

**TABLE 40
NUMBER AND PERCENTAGE OF CHILDREN LEAVING DES CUSTODY
FOR REASON OF "GUARDIANSHIP" FOR THE REPORTING PERIOD
ENDING SEPTEMBER 30, 2008**

By Age	Number	Percentage
Under 1	9	2.9%
Ages 1 - 5	88	28.4%
Ages 6 - 8	40	12.9%
Ages 9 - 12	61	19.7%
Ages 13 - 17	112	36.1%
18 and Over	0	0.0%
Total	310	100.0%
Ethnicity	Number	Percentage
Caucasian	123	39.7%
Hispanic	117	37.7%
African American	20	6.5%
American Indian	39	12.6%
Asian	2	0.6%
Other	9	2.9%
Total	310	100.0%
By Number of Placements	Number	Percentage
One	160	51.7%
Two	63	20.3%
Three	41	13.2%
Four	23	7.4%
Five	10	3.2%
More than Five	13	4.2%
Total	310	100.0%
By Length of Time in Care	Number	Percentage
Less than 30 Days	38	12.3%
31 Days to 12 Months	103	33.2%
13 to 24 Months	129	41.6%
More than 24 Months	40	12.9%
Total	310	100.0%

	Average	Median
By Age	9.7	9.8
By Number of Placements	2.1	1.0
By Months of Time in Care	15.1	13.6

**TABLE 41
NUMBER AND PERCENTAGE OF CHILDREN LEAVING DES CUSTODY
FOR REASONS OF "REACHING AGE OF MAJORITY" FOR THE REPORTING PERIOD
ENDING SEPTEMBER 30, 2008**

By Age	Number	Percentage
Under 1	0	0.0%
Ages 1 - 5	0	0.0%
Ages 6 – 8	0	0.0%
Ages 9 - 12	0	0.0%
Ages 13 - 17	6	1.9%
18 and Over	315	98.1%
Total	321	100.0%
Ethnicity	Number	Percentage
Caucasian	137	42.7%
Hispanic	108	33.6%
African American	44	13.7%
American Indian	24	7.5%
Asian	1	0.3%
Other	7	2.2%
Total	321	100.0%
By Number of Placements	Number	Percentage
One	37	11.5%
Two	37	11.5%
Three	36	11.2%
Four	39	12.2%
Five	29	9.0%
More than Five	143	44.6%
Total	321	100.0%
By Length of Time in Care	Number	Percentage
Less than 30 Days	1	0.3%
31 Days to 12 Months	70	21.8%
13 to 24 Months	73	22.7%
More than 24 Months	177	55.2%
Total	321	100.0%

	Average	Median
By Age	18.6	18.0
By Number of Placements	6.4	5.0
By Months of Time in Care	38.8	28.2

**TABLE 42
NUMBER AND PERCENTAGE OF CHILDREN LEAVING DES CUSTODY
FOR REASON OF "TRANSFER TO ANOTHER AGENCY" FOR THE REPORTING PERIOD
ENDING SEPTEMBER 30, 2008**

By Age	Number	Percentage
Under 1	11	8.7%
Ages 1 – 5	56	44.0%
Ages 6 – 8	7	5.5%
Ages 9 – 12	16	12.6%
Ages 13 – 17	34	26.8%
18 and Over	3	2.4%
Total	127	100.0%
Ethnicity	Number	Percentage
Caucasian	37	29.1%
Hispanic	40	31.5%
African American	20	15.7%
American Indian	26	20.5%
Asian	2	1.6%
Other	2	1.6%
Total	127	100.0%
By Number of Placements	Number	Percentage
One	84	66.2%
Two	22	17.3%
Three	6	4.7%
Four	5	3.9%
Five	3	2.4%
More than Five	7	5.5%
Total	127	100.0%
By Length of Time in Care	Number	Percentage
Less than 30 Days	28	22.0%
31 Days to 12 Months	69	54.4%
13 to 24 Months	22	17.3%
More than 24 Months	8	6.3%
Total	127	100.0%

	Average	Median
By Age	7.8	5.1
By Number of Placements	1.9	1.0
By Months of Time in Care	9.9	6.6

**TABLE 43
NUMBER AND PERCENTAGE OF CHILDREN LEAVING DES CUSTODY
FOR REASON OF "RUNAWAY" FOR THE REPORTING PERIOD
ENDING SEPTEMBER 30, 2008**

By Age	Number	Percentage
Under 1	0	0.0%
Ages 1 – 5	3	4.0%
Ages 6 – 8	2	2.7%
Ages 9 – 12	1	1.3%
Ages 13 – 17	64	85.3%
18 and Over	5	6.7%
Total	75	100.0%
Ethnicity	Number	Percentage
Caucasian	27	36.0%
Hispanic	29	38.7%
African American	6	8.0%
American Indian	3	4.0%
Asian	3	4.0%
Other	7	9.3%
Total	75	100.0%
By Number of Placements	Number	Percentage
One	53	70.6%
Two	8	10.7%
Three	1	1.3%
Four	3	4.0%
Five	2	2.7%
More than Five	8	10.7%
Total	75	100.0%
By Length of Time in Care	Number	Percentage
Less than 30 Days	39	52.0%
31 Days to 12 Months	15	20.0%
13 to 24 Months	10	13.3%
More than 24 Months	11	14.7%
Total	75	100.0%

	Average	Median
By Age	15.7	16.4
By Number of Placements	2.3	1.0
By Months of Time in Care	9.7	0.4

TABLE 44
NUMBER AND PERCENTAGE OF CHILDREN LEAVING DES CUSTODY
FOR REASON OF “DEATH OF CHILD” FOR THE REPORTING PERIOD ENDING
SEPTEMBER 30, 2008

By Age	Number	Percentage
Under 1	0	0.0%
Ages 1 - 5	0	0.0%
Ages 6 – 8	0	0.0%
Ages 9 - 12	0	0.0%
Ages 13 - 17	0	0.0%
18 and Over	0	0.0%
Total	0	0.0%
Ethnicity	Number	Percentage
Caucasian	0	0.0%
Hispanic	0	0.0%
African American	0	0.0%
American Indian	0	0.0%
Asian	0	0.0%
Other	0	0.0%
Total	0	0.0%
By Number of Placements	Number	Percentage
One	0	0.0%
Two	0	0.0%
Three	0	0.0%
Four	0	0.0%
Five	0	0.0%
More than Five	0	0.0%
Total	0	0.0%
By Length of Time in Care	Number	Percentage
Less than 30 Days	0	0.0%
31 Days to 12 Months	0	0.0%
13 to 24 Months	0	0.0%
More than 24 Months	0	0.0%
Total	0	0.0%

	Average	Median
By Age	0.0	0.0
By Number of Placements	0.0	0.0
By Months of Time in Care	0.0	0.0

TABLE 45
CHILDREN EXITING CARE FOR REASON OF DEATH BY CAUSE OF DEATH,
PLACEMENT TYPE AT TIME OF DEATH, AND COUNTY

COUNTY	CAUSE OF DEATH	TYPE OF PLACEMENT AT TIME OF DEATH
There were children exiting care for reason of death this reporting period.		

TABLE 46
NUMBER OF CHILDREN IN AN OPEN CASE WHO DIED AS A RESULT OF ALLEGED
ABUSE AS CATEGORIZED BY THE CUSTODIAL RELATIONSHIP AND COUNTY FOR THE
PERIOD APRIL 1, 2008 THROUGH SEPTEMBER 30, 2008

COUNTY	BIOLOGICAL PARENT(S)	OTHER FAMILY MEMBER	ADOPTIVE PARENT(S)	FOSTER CARE PARENT(S)	OTHER OUT-OF-HOME CARE PROVIDER	TOTAL	% OF TOTAL
APACHE	0	0	0	0	0	0	0.0%
COCHISE	0	0	0	0	0	0	0.0%
COCONINO	0	0	0	0	0	0	0.0%
GILA	0	0	0	0	0	0	0.0%
GRAHAM	0	0	0	0	0	0	0.0%
GREENLEE	0	0	0	0	0	0	0.0%
LA PAZ	0	0	0	0	0	0	0.0%
MARICOPA	1	0	0	0	0	1	50.0%
MOHAVE	0	0	0	0	0	0	0.0%
NAVAJO	0	0	0	0	0	0	0.0%
PIMA	1	0	0	0	0	1	50.0%
PINAL	0	0	0	0	0	0	0.0%
SANTA CRUZ	0	0	0	0	0	0	0.0%
YAVAPAI	0	0	0	0	0	0	0.0%
YUMA	0	0	0	0	0	0	0.0%
STATEWIDE	2	0	0	0	0	2	100.0%
% OF TOTAL	100.0%	50.0%	0.0%	0.0%	0.0%	100.0%	

There were no children in an open case who died as a result of abuse from a household adult not accounted for in the prior table.

CHILDREN WITH ADOPTIVE CASE PLAN GOALS

Of the 10,303 children in out-of-home care on September 30, 2008, 1,856 or 18.0 percent had a case plan goal of adoption. The majority of those children, 47.3 percent, are in the 1-5 year old age range, followed by 19.3 percent in the 6-8 year old age range, and 19.0 percent in the 9-12 year old age range. The remaining children, 268 or 14.4 percent, fall within the under one or 13 and over age range. The majority of these children are Caucasian (767 or 41.3 percent), Hispanic (702 or 37.8 percent), or African American (254 or 13.7 percent). The remaining 133 children or 7.2 percent are American Indian, Asian or other. Eighty seven and two tenths of a percent, or 1,618 of the children free for adoption, are currently placed in their adoptive homes.

**TABLE 47
NUMBER OF CHILDREN WITH A PETITION FOR TERMINATION OF PARENTAL RIGHTS
BY COUNTY FOR THE PERIOD APRIL 1, 2008 THROUGH SEPTEMBER 30, 2008**

COUNTY	TERMINATION OF RIGHTS GRANTED	TERMINATION OF RIGHTS DENIED	TERMINATION OF RIGHTS GRANTED IN PART/DENIED IN PART	TERMINATION OF RIGHTS WITHDRAWN	TOTAL	% OF TOTAL
APACHE	3	0	0	0	3	0.3%
COCHISE	22	0	0	0	22	2.4%
COCONINO	11	0	0	0	11	1.2%
GILA	5	0	0	0	5	0.5%
GRAHAM	2	0	0	0	2	0.2%
GREENLEE	1	0	0	0	1	0.1%
LA PAZ	0	0	0	1	1	0.1%
MARICOPA	486	5	5	17	513	55.4%
MOHAVE	22	0	0	0	22	2.4%
NAVAJO	4	0	0	0	4	0.4%
PIMA	210	9	5	4	228	24.6%
PINAL	49	0	1	1	51	5.5%
SANTA CRUZ	2	0	0	1	3	0.3%
YAVAPAI	41	0	0	0	41	4.4%
YUMA	18	0	0	2	20	2.2%
STATEWIDE	876	14	11	26	927	100.0%
% OF TOTAL	94.5%	1.5%	1.2%	2.8%	100.0%	

The average length of time that a child with a case plan goal of “adoption” has spent in out-of-home care is 2 years, 5 months. There were a total of 1,856 children with case plan goals of adoption during this reporting period. Of this total, 1,618 were placed and 238 were not placed. The population of children with case plan goals of adoption averaged 3.4 placements and had a median placement count of 2.0. Their placement count ranged from 1 to 26.

**TABLE 48
PLACEMENT INFORMATION FOR CHILDREN WITH A CASE PLAN GOAL OF ADOPTION**

	Placements
Average	3.4
Median	2.0
Range Minimum	1.0
Range Maximum	26.0

**CHART 35
THE PLACEMENT AND NUMBER OF CHILDREN WITH A CASE PLAN GOAL OF ADOPTION BY AGE**

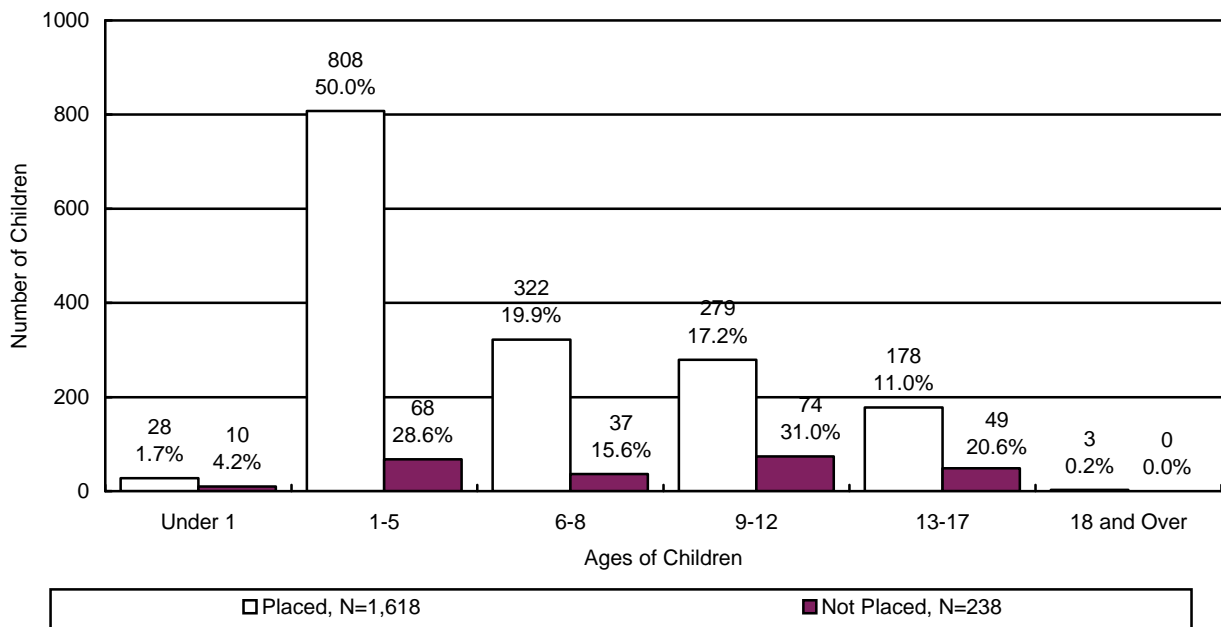


CHART 36
THE PLACEMENT AND NUMBER OF CHILDREN WITH A CASE PLAN GOAL OF ADOPTION BY ETHNICITY

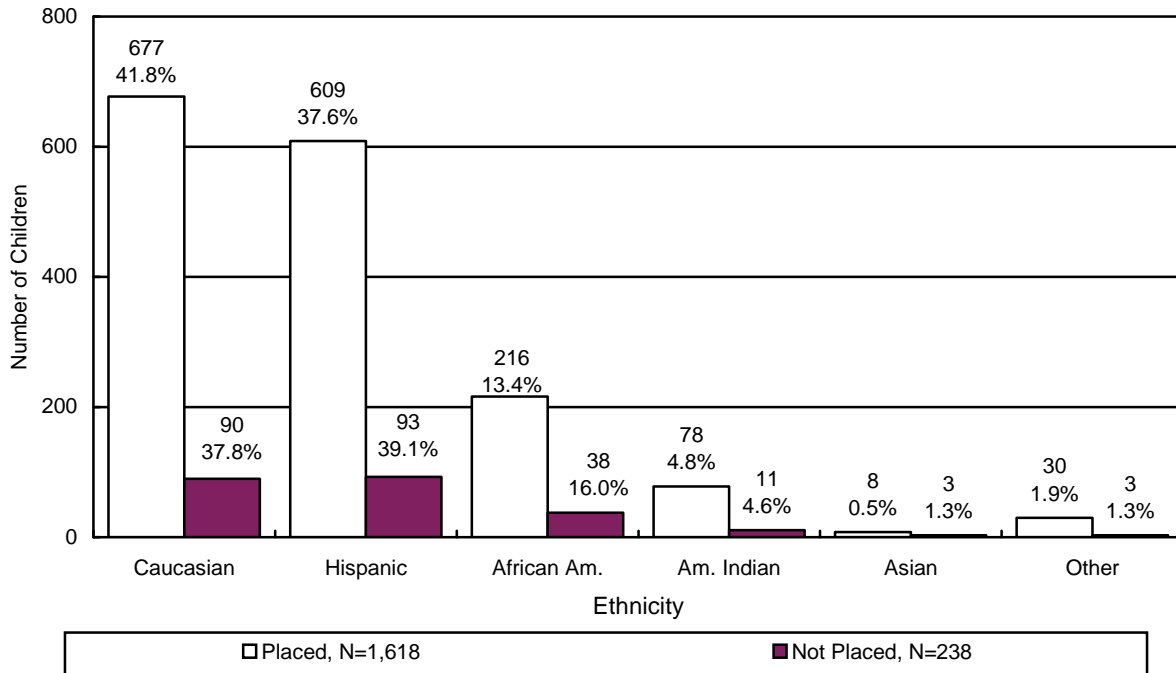
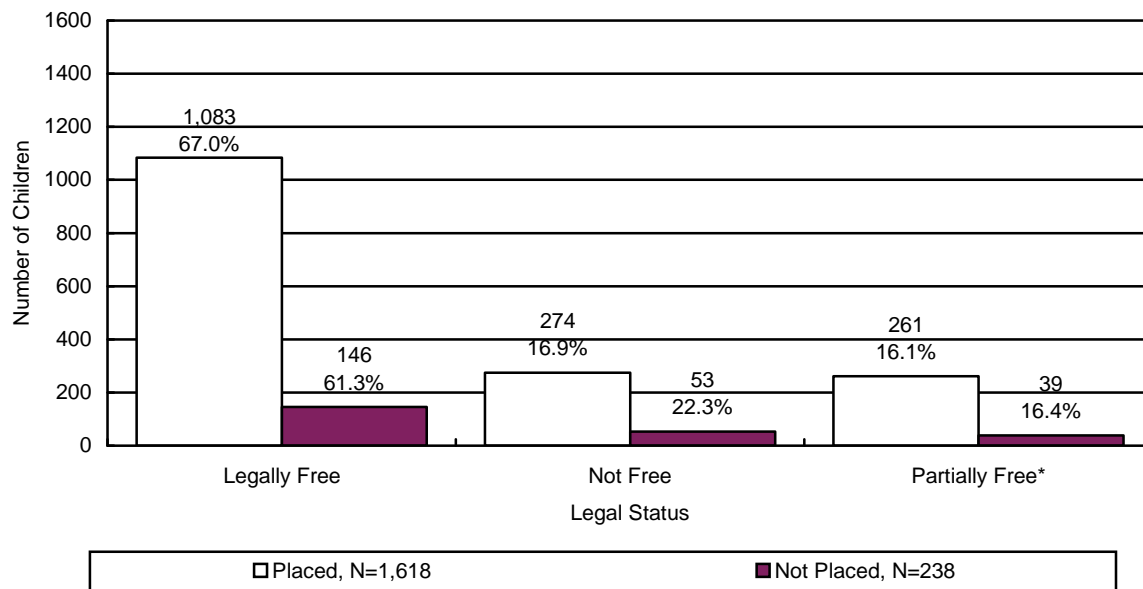
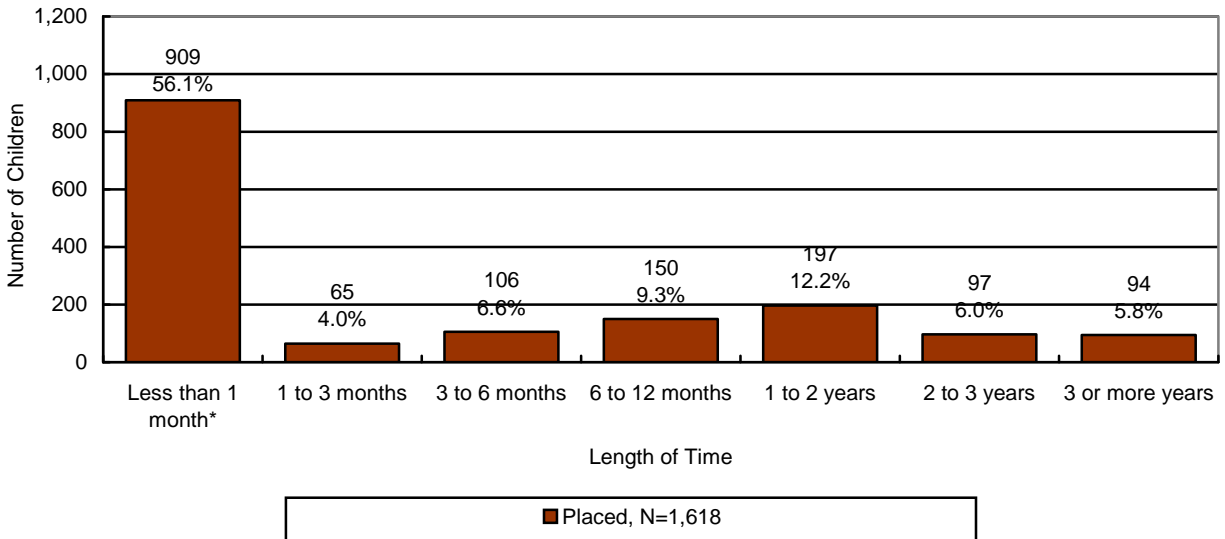


CHART 37
THE PLACEMENT AND NUMBER OF CHILDREN WITH A CASE PLAN GOAL OF ADOPTION BY LEGAL STATUS



*Partially free refers to a situation where only one of the parent's rights has been severed.

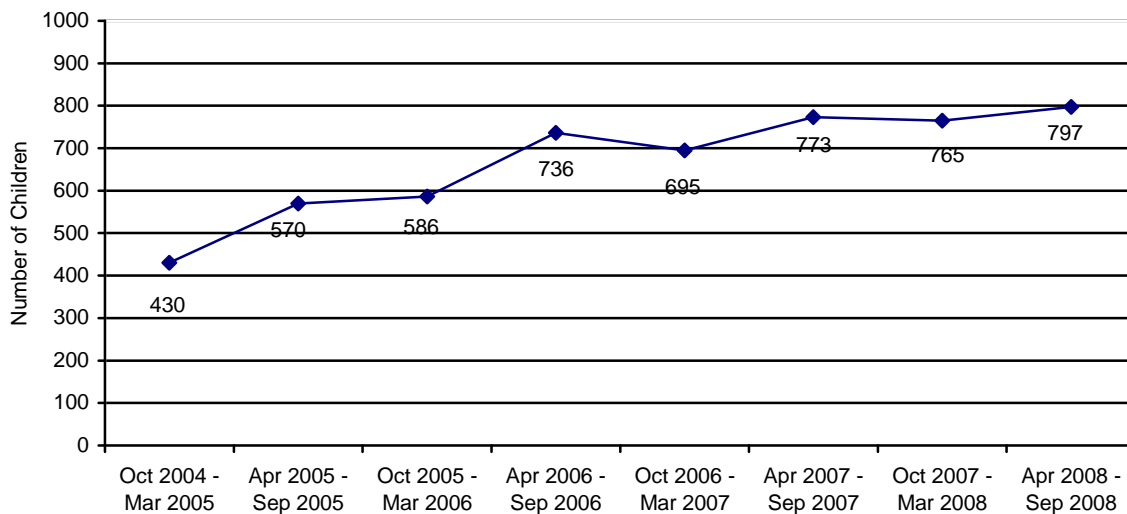
CHART 38
THE NUMBER OF CHILDREN WITH A CASE PLAN GOAL OF ADOPTION BY LENGTH OF TIME FROM CHANGE OF CASE PLAN GOAL OF ADOPTION TO ADOPTIVE PLACEMENT



*About 70 percent of children are adopted by relatives or their foster parents and are already in their prospective adoptive placement at the time the case plan goal changes to adoption.

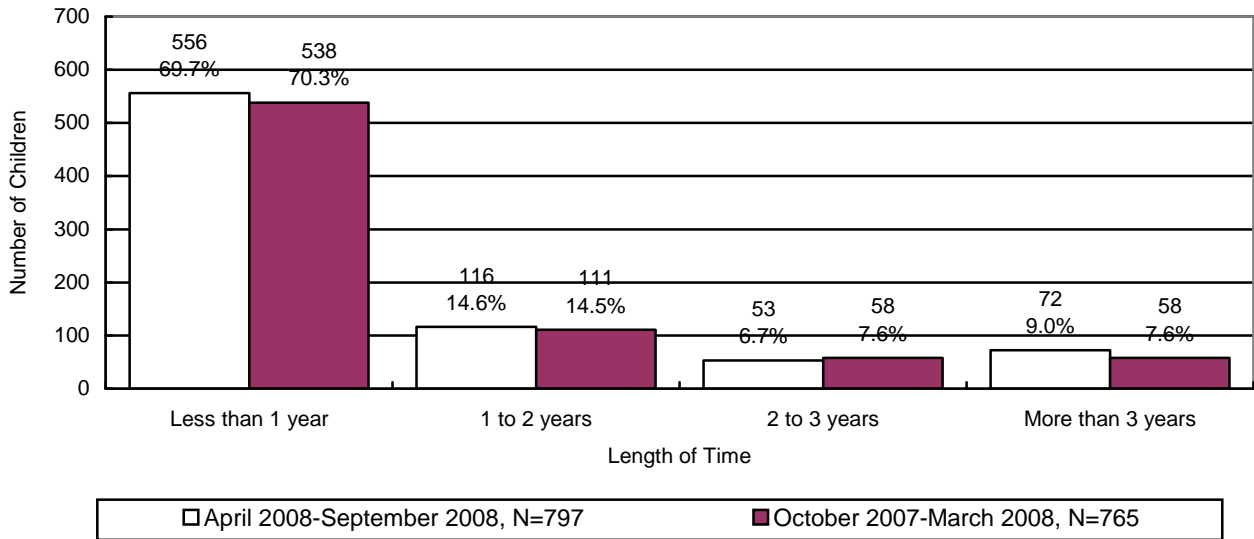
ADOPTIVE SERVICES

CHART 39
THE NUMBER OF CHILDREN WITH A FINALIZED ADOPTION



There were 797 children with a finalized adoption during the reporting period. Chart 40 displays the number of children with a finalized adoption during the reporting period by the average length of time in out-of-home placement before adoptive placement.

CHART 40
THE NUMBER AND PERCENTAGE OF CHILDREN WITH A FINALIZED ADOPTION BY
AVERAGE LENGTH OF TIME IN OUT-OF-HOME PLACEMENT BEFORE ADOPTIVE
PLACEMENT



The chart below displays the number of children with a finalized adoption by average length of time in adoptive placement before the final order of adoption.

CHART 41
THE NUMBER AND PERCENTAGE OF CHILDREN WITH A FINALIZED ADOPTION BY
AVERAGE LENGTH OF TIME IN ADOPTIVE PLACEMENT BEFORE THE FINAL ORDER
OF ADOPTION

