

**CHILD WELFARE REPORTING REQUIREMENTS**

**SEMI-ANNUAL REPORT**

**FOR THE PERIOD OF**

**OCTOBER 1, 2008 THROUGH MARCH 31, 2009**

**ARIZONA REVISED STATUTES**

**[LAWS 2006, CHAPTER 203]**

**ARIZONA DEPARTMENT OF ECONOMIC SECURITY**

**DIVISION OF CHILDREN, YOUTH AND FAMILIES**

**ADMINISTRATION FOR CHILDREN, YOUTH AND FAMILIES**

## **CHILD WELFARE REPORTING REQUIREMENTS**

Arizona Revised Statute §8-526, as amended by Laws 2006, Chapter 203 requires the Arizona Department of Economic Security (DES) to compile information and produce a semi-annual report for the periods ending on March 31 and September 30 of each year regarding Child Welfare Services, including Child Protective Services (CPS). This report, submitted in satisfaction of that mandate, is for the semi-annual reporting period beginning on October 1, 2008 and ending on March 31, 2009.

### **TABLE OF CONTENTS**

(Reporting period: October 1, 2008 through March 31, 2009)

	<i>Page</i>
<b>EXECUTIVE SUMMARY</b>	4
<b>SEMI-ANNUAL COMPARISONS</b>	7
<b>REPORTS OF CHILD ABUSE AND NEGLECT</b>	
Reports by reporting period and type of child maltreatment – statewide data	8
Sample communications to hotline, not meeting definition of report	10
Reports received by risk level- statewide data	11
Number of reports received by risk level – county specific data	11
Number of reports received by maltreatment – statewide data	12
Number of reports received by maltreatment – county specific data	13
<b>ASSIGNMENT OF INVESTIGATIONS</b>	
Reports assigned for investigation by risk level – statewide data	14
Reports assigned for investigation by risk level – county specific data	14
Reports assigned for investigation by type of maltreatment – statewide data	15
Reports assigned for investigation by type of maltreatment – county specific data	16
<b>INVESTIGATIONS OF CHILD ABUSE AND NEGLECT</b>	
Reports not responded to by risk level – county specific data	17
Investigations by risk level – investigation still open – statewide data	18
Investigations by risk level – investigation still open – county specific data	19
Investigations by type of child maltreatment – investigation still open – statewide data	20
Investigations by type of child maltreatment – investigation still open – county specific data	20
Reports where removal occurred – county specific data	22
<b>COMPLETED INVESTIGATIONS</b>	
Substantiation rate by reporting period	24
Investigations by risk level – proposed substantiated reports – statewide data	25

**TABLE OF CONTENTS (continued)**  
(Reporting period: October 1, 2008 through March 31, 2009)

	<u>Page</u>
Investigations by risk level – proposed substantiated reports – county specific data	25
Investigations by type of child maltreatment – proposed substantiated reports – statewide data	26
Investigations by type of child maltreatment – proposed substantiated reports – county specific data	27
Investigations by risk level – substantiated reports – statewide data	28
Investigations by risk level – substantiated reports county specific data	28
Investigations by type of child maltreatment – substantiated reports – statewide data	29
Investigations by type of child maltreatment – substantiated reports – county specific data	30
Investigations by risk level – unsubstantiated reports – statewide data	31
Investigations by risk level – unsubstantiated reports – county specific data	31
Investigations by type of child maltreatment – unsubstantiated reports – statewide data	32
Investigations by type of child maltreatment – unsubstantiated reports – county specific data	33
 <b>SAFE HAVEN INFANTS</b>	
Number of Safe Haven infants delivered during reporting period	34
 <b>CHILDREN ENTERING OUT-OF-HOME CARE</b>	
New entries by county – children under 18 years voluntary placement	35
New entries by county	37
New entries – statewide data	38
 <b>CHILDREN IN OUT-OF-HOME CARE</b>	
Children in out-of-home care by reporting period	39
Children in group homes ages 0-6	40
Children in shelter ages 0-3	40
The average length of stay in a shelter placement for children ages 0-3 in a shelter placement on the last day of the reporting period	41
All children in care by age and ethnicity	41-42
All children in care by case plan goal and placement type	42-43
All children in care by placement type and age	44
Children in shelter or receiving homes for more than 21 days	45
Children in out-of-home care by length of time in care	46
Children in out-of-home care by legal status	47
Children receiving required visitation	48
 <b>FOSTER HOME LICENSING, CLOSURES, AND VISITATIONS</b>	
Foster homes licensed	49
Foster homes closed and reason for closure	49
Child bed spaces available	49

**TABLE OF CONTENTS (continued)**  
(Reporting period: October 1, 2008 through March 31, 2009)

	<u>Page</u>
Number of foster homes receiving the required visitation	50
 <b>CHILDREN LEAVING OUT-OF-HOME CARE</b>	
Semi-Annual comparisons of total number leaving care – For all reasons	51
Total number leaving care	52
Total number leaving care – For reason of reunification with parents	53
Total number leaving care – For reason of living with other relatives	54
Total number leaving care – For reason of adoption	55
Total number leaving care – For reason of guardianship	56
Total number leaving care – For reason of reaching age of majority	57
Total number leaving care – For reason of transfer to another agency	58
Total number leaving care – For reason of runaway	59
Total number leaving care – For reason of death of child	60
Total number leaving care – by cause of death	61
Total number for reason of death of child – with alleged abuse	61
 <b>CHILDREN WITH CASE PLAN GOALS OF ADOPTION</b>	
Number of children with a petition for termination of parental rights	62
The placement and number of children with case plan goals of adoption by age	63
The placement and number of children with case plan goals of adoption by ethnicity	64
The placement and number of children with case plan goals of adoption by legal status	64
Number of children – length of time from change of case plan goal of adoption to adoptive placement	65
 <b>ADOPTIVE SERVICES</b>	
Number of children with a finalized adoption by average length of time in out-of-home placement before adoptive placement	66
Number of children with a finalized adoption by average length of time in adoptive placement before the final order of adoption	66

## Executive Summary

The Arizona Department of Economic Security's Division of Children, Youth and Families (Division) is pleased to publish this semi-annual report for October 2008 through March 2009 in compliance with A.R.S. § 8-526. This report is intended to provide its readers an opportunity to review the Division's progress in implementing systemic improvement strategies as they impact key performance indicators.

The Division continues to implement the key strategies for (1) enhancing the ability of parents to create safe, stable and nurturing home environments; (2) strengthening families so children can remain safely in their homes; (3) finding more permanent homes more quickly for children; and (4) placing children in the least restrictive, most family-like setting possible.

The improved outcomes for children and families that have resulted from the implementation of those strategies have been highlighted in previous editions of this report and other Division publications. Additional successes are expected as the Division continues the statewide implementation of other continuous improvement strategies, such as embedding the Division's comprehensive Child Safety Assessment, Strengths and Risk Assessment, and Case Planning (CSA/SRA/CP) process into child welfare practice. This enhanced process assists child welfare specialists in more effectively assessing risk and engaging families in planning for and completing the services that are going to help them to create safe, stable living environments for their children. The hard-copy version of this process was implemented between February and June 2006. The Division launched a fully automated version of the process in November 2007.

The data contained in this *Semi-Annual Report*, when combined with other child welfare-related information in the Department, demonstrate the significant progress made in many of the Division's areas of focus and identify areas where continued focus is needed.

### **Child Abuse Hotline and Child Protective Services (CPS) Investigations**

The statewide Child Abuse Hotline received 29,146 calls during this reporting period. Of those, 12,052 – or 41.4 percent – *did not meet* the statutory criteria for a CPS report. Calls that did not meet the criteria for a CPS report included: requests for information or referrals for services; questions about current cases; and allegations of abuse or neglect where the alleged perpetrator was not the child's parent, guardian or custodian (those calls are referred to law enforcement for response). Every call that does not meet the criteria for a CPS report is reviewed within 48 hours by quality assurance staff to ensure the accuracy of that decision.

The statewide Child Abuse Hotline received 17,094 calls during this reporting period that met the statutory criteria for a CPS report. Of those, 198 were referred to other jurisdictions, the military or tribal governments for investigation and an additional 76 were reports were not assigned for investigation. This resulted in 16,820 CPS reports being assigned to child welfare specialists for investigation. Compared to the same reporting period last year, this represents a decrease of 490 CPS reports assigned for investigation – or 2.8 percent. This decrease in CPS reports requiring an investigation has mainly occurred in Maricopa and Pima counties.

Of the 16,820 CPS reports assigned for investigation during this reporting period, 10,686 reports – or 63.5 percent – had investigation closures entered into the Children's Information Library and Data Source (CHILDS) statewide case management information system. Closing a case means that the initial investigation to the original allegations of abuse or neglect has been completed and the appropriate case plan is put in place, as needed. Many factors can impact the closure of investigations, including time

needed for child welfare specialists to become more proficient with the new risk assessment and case planning process and the corresponding automated version.

Of the 14,361 CPS reports subject to substantiation during this reporting period, 684 – or 4.8 percent – were substantiated. An additional 226 CPS reports – or 1.6 percent – were proposed for substantiation by child welfare specialists and are currently awaiting the results of the appeals process. Over time, the number of substantiated and proposed substantiated CPS reports associated with this time period will increase as investigation findings are entered into CHILDS. It is sometimes difficult to substantiate allegations of abuse or neglect because current state laws that define child maltreatment do not include many situations related to child neglect or sexual abuse.

### **Children in Out-of-Home Care**

The Division continues to engage the community in efforts to keep children safe, strengthen families, and prevent the need for children to be removed from their homes through the statewide implementation of strategies such as the Annie E. Casey Foundation's Family to Family Initiative. Family to Family includes four basic principles: (1) a child's safety is paramount; (2) children belong in families; (3) families need strong communities; and (4) public child welfare systems need partnerships with the community and with other systems to achieve strong outcomes for children.

The number of children in out-of-home care increased from 10,303 in the prior reporting period to 10,404 in March 2009. Of the children in out-of-home care, the Division continues its success in placing children in the most family-like setting possible. In March 2009, 8,345 children – or 80.2 percent of all children in out-of-home care – were placed with relatives or licensed foster parents. An additional 36 children were placed with their parents on a trial home visit and 384 youth were residing in independent living settings. Efforts to increase the number of licensed foster parents who are able to meet the needs of children requiring out-of-home placement resulted in 648 new homes being licensed during this reporting period.

The Division continues to make tremendous strides in reducing the number of young children in shelter and group home care. In March 2009, there were 13 young children ages 0 through 3 in shelter care. This represents a decrease of 95 children – or 88.0 percent – since March 2005. Placement of young children in shelter care continues to be influenced by the need to place some children after regular work hours, such as weekends, as well as the placement of children in a specialized shelter in Pima County for medically fragile children. The Division has also worked diligently to reduce the number of very young children in group homes. In March 2009, there were 13 young children ages 0 to 6 in group homes. This represents a decrease of 23 children – or 63.9 percent – since March 2006. There are times when placement of young children in group homes is in the best interests of the children; for example, when group placement would allow siblings to stay together or when group placement is considered the least restrictive placement for a child with behavioral issues.

Since March 2005, the number of children placed in shelter or receiving home care for 21 days or more decreased by 598 children – or 53.1 percent – a significant improvement. Compared to the same reporting period last year, the number of children in these temporary care settings decreased by 97 children – or 15.5 percent.

The state requires monthly face to face visitation with children in foster care. The current report shows that 69.7 percent of the children in foster care received their visitation during the last month of the reporting period. This compares to 74.4 percent receiving their visit during the last month of the reporting period ending September 2008. The Department recognizes a strong correlation between caseworker visits with children and positive outcomes for these children, such as achieving permanency and other indicators of child well-being, and continues to make efforts to improve our rate of visitation.

**Permanency for Children**

The Division continues to work toward achieving permanency for children placed in out-of-home care. The total number of children achieving permanency through family reunification, adoption or legal guardianship was 3,027 in this reporting period, compared to 2,944 in the same reporting period last year. Compared to the same reporting period last year, in this reporting period:

- 1,955 children exited the system to family reunification, an increase of 141 children – or 7.8 percent.
- 764 children exited to adoption, an decrease of 1 child – or 0.1 percent.
- 308 children exited to guardianship, a decrease of 57 children – or 15.6 percent.

This data demonstrates that more children are being reunified with their parents and more children are achieving permanency through adoption, which is considered the most permanent plan for a child who can not safely return home. Arizona continues to be recognized for its high rate of adoptions through receipt of federal Adoption Incentive funding. Incentive funding was awarded in federal fiscal years 2005, 2006 and 2008. For 2006, Arizona achieved the highest amount among states receiving incentive funding, and Arizona was in the top three among states receiving incentives in 2005.

**Challenges**

The Division faces a number of challenges in its efforts to ensure safety and promote permanency for abused and neglected children. Some of the challenges the Division has faced in meeting these goals are:

- Recruiting staff with expertise in child welfare and the retention of trained and qualified staff.
- Increased expectations for staff to implement new practices and meet new federal requirements without adequate funding.
- Economic factors which create additional stress upon families and increases factors that place children at risk of maltreatment.
- Funding cuts to the Division have had devastating impacts on services. These impacts have been felt through the loss of staff, severe reductions in the preventative and family support services provided by the Division and large decreases in the amount of in-home services provided to clients. Unfortunately, as the economic crisis continues, the prospect of further funding cuts will yield yet greater impacts to clients and services.

Despite these challenges, the Division continues to ensure child welfare staff has the tools they need to do their jobs effectively, and that both state and federal standards are being implemented. The Division continues to work in partnership with the federal government to meet the federal Child and Family Service Review (CFSR) standards to improve outcomes for the children and families we serve.

## Semi-Annual Comparisons

	Apr 2005 through Sep 2005	Oct 2005 through Mar 2006	Apr 2006 through Sep 2006	Oct 2006 through Mar 2007	Apr 2007 through Sep 2007	Oct 2007 through Mar 2008	Apr 2008 through Sep 2008	Oct 2008 through Mar 2009
Number of Reports Received	18,797	17,756	16,781	16,612	18,078	17,628	17,493	17,094
Number of Reports Substantiated <sup>1</sup>	1,677	1,326	1,376	1,369	1,413	1,223	1,331	684
Substantiation Rate	11%	9%	10%	10%	10%	8%	9%	5%
Number of Reports Investigated & Closed	N/A	N/A	16,256	15,017	12,722	10,760	10,064	10,686
Number of Reports Responded To	N/A	N/A	16,619	16,422	17,876	17,413	17,310	16,820
Number of new removals	4,078	3,753	3,773	3,683	3,924	3,742	4,546	3,889
Number of new removals with Voluntary under 18	420	290	386	398	468	408	370	319
Number of Children in Out-of-Home Care on the Last Day of Reporting Period	9,906	9,902	9,833	9,773	9,701	9,721	10,303	10,404
Number of Children in Shelter for More than 21 Days	1,039	840	744	705	679	626	585	529
Number and Percentage of Children Receiving Visitation In the Last Month of Reporting Period	6,045 (61.0%)	6,411 (64.7%)	6,437 (65.5%)	7,610 (77.9%)	7,283 (75.1%)	7,376 (75.9%)	7,664 (74.4%)	7,247 (69.7%)
Number and Percentage of Children not Receiving Visitation	3,861 (39.0%)	3,491 (35.3%)	3,396 (34.5%)	2,163 (22.1%)	2,418 (24.9%)	2,345 (24.1%)	2,639 (25.6%)	3,157 (30.3%)
Number and Percentage of Parents Receiving Visitation	1,080 (47.9%)	1,154 (52.1%)	1,131 (51.8%)	1,398 (63.1%)	1,241 (63.5%)	1,025 (62.3%)	1,022 (60.2%)	939 (53.6%)
Number of Licensed Foster Homes	2,288	2,863	3,256	3,177	3,512	3,592	3,615	3,923
Number of Foster Home Spaces Available to ACYF	4,905	5,668	6,469	6,498	6,639	6,283	7,116	8,293
Number of New Foster Homes	397	328	426	432	435	794	162	648
Number of Foster Homes Closed	258	295	166	232	100	445	139	340
Number and Percentage of Foster Homes Receiving Visitation In the Last Qtr. Of Reporting Period	1,672 (63.3%)	1,833 (64.0%)	1,790 (55.0%)	2,116 (66.6%)	1,739 (49.5%)	2,137 (59.5%)	2,412 (66.7%)	2,993 (76.3%)
Number and Percentage of Foster Homes not Receiving Visitation	968 (36.7%)	1,030 (36.0%)	1,466 (45.0%)	1,061 (33.4%)	1,773 (50.5%)	1,455 (40.5%)	1,203 (33.3%)	930 (23.7%)
Number of Children Leaving DES Custody	3,488	3,506	3,595	3,553	3,824	3,512	3,773	3,590
Number of Children With a Case Plan Goal of Adoption	2,170	2,345	2,302	2,439	2,186	1,954	1,856	2,047
Number of Children With a Finalized Adoption	570	586	736	695	773	765	797	764

<sup>1</sup> Since the appeals process delays the substantiation of reports, revisions to the substantiation rate for the prior reporting period will occur with every semi-annual report produced.



**Reports of Abuse & Neglect**

Child abuse and neglect are defined in A.R.S. §8-201 and A.R.S. §13-3623 (A). These definitions provide the major categories in this report.

Between October 1, 2008 and March 31, 2009, there were 17,094 incoming communications to the Child Abuse Hotline that met the criteria for a report of abuse or neglect. Of these, 198 were within the jurisdiction of military or tribal governments and were referred to those jurisdictions. This compares to 17,493 incoming communications received during the last reporting period which met the criteria of a report of abuse or neglect.

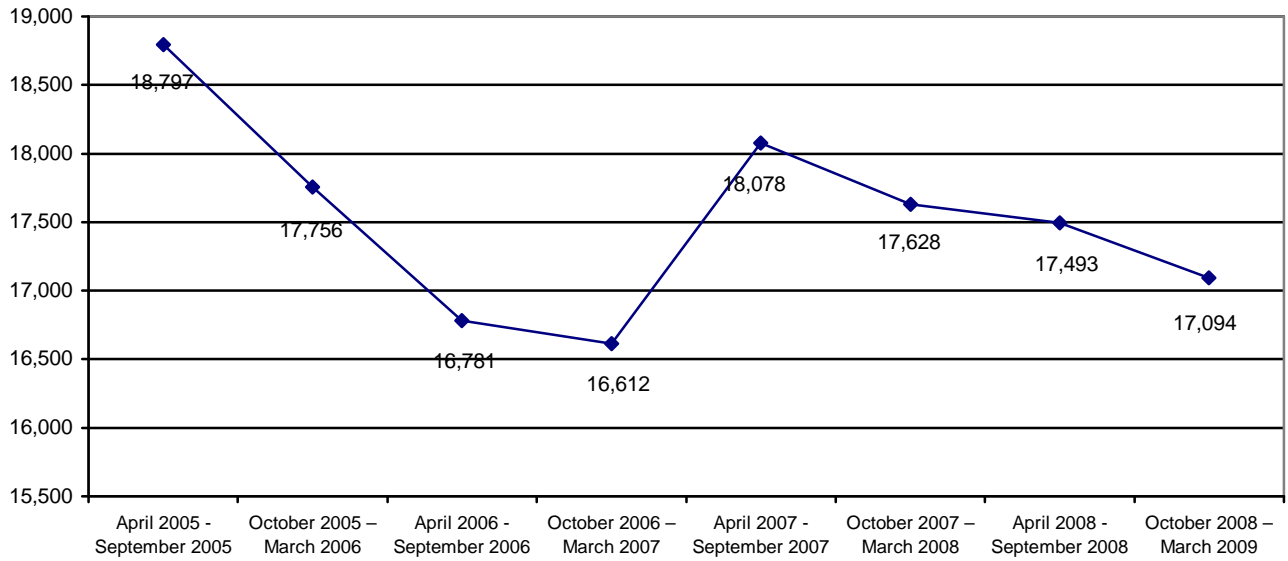
Table 1 shows the number of reports received by the Department by category of maltreatment for the last eight reporting periods. The table shows that for the current reporting period 9,854 or 57.6 percent of the 17,094 reports of maltreatment were related to allegations of neglect, 6,064 or 35.5 percent of the reports were related to allegations of physical abuse, 975 or 5.7 percent of the reports were related to allegations of sexual abuse, and 210 or 1.2 percent of the reports were related to allegations of emotional abuse.

**TABLE 1  
REPORTS BY REPORTING PERIOD AND TYPE OF MALTREATMENT**

	Neglect	Physical Abuse	Sexual Abuse	Emotional Abuse	Total
April 2005 - September 2005	11,282 60.0%	6,139 32.7%	1,135 6.0%	241 1.3%	18,797 100.0%
October 2005 – March 2006	10,592 59.6%	5,890 33.2%	1,010 5.7%	264 1.5%	17,756 100.0%
April 2006 - September 2006	10,201 60.7%	5,346 31.9%	1,019 6.1%	215 1.3%	16,781 100.0%
October 2006 – March 2007	9,838 59.2%	5,571 33.5%	1,007 6.1%	196 1.2%	16,612 100.0%
April 2007 – September 2007	10,922 60.4%	5,836 32.3%	1,108 6.1%	212 1.2%	18,078 100.0%
October 2007 – March 2008	10,449 59.2%	6,005 34.1%	980 5.6%	194 1.1%	17,628 100.0%
April 2008 – September 2008	10,539 60.2%	5,737 32.8%	1,028 5.9%	189 1.1%	17,493 100.0%
October 2008 – March 2009	9,845 57.6%	6,064 35.5%	975 5.7%	210 1.2%	17,094 100.0%

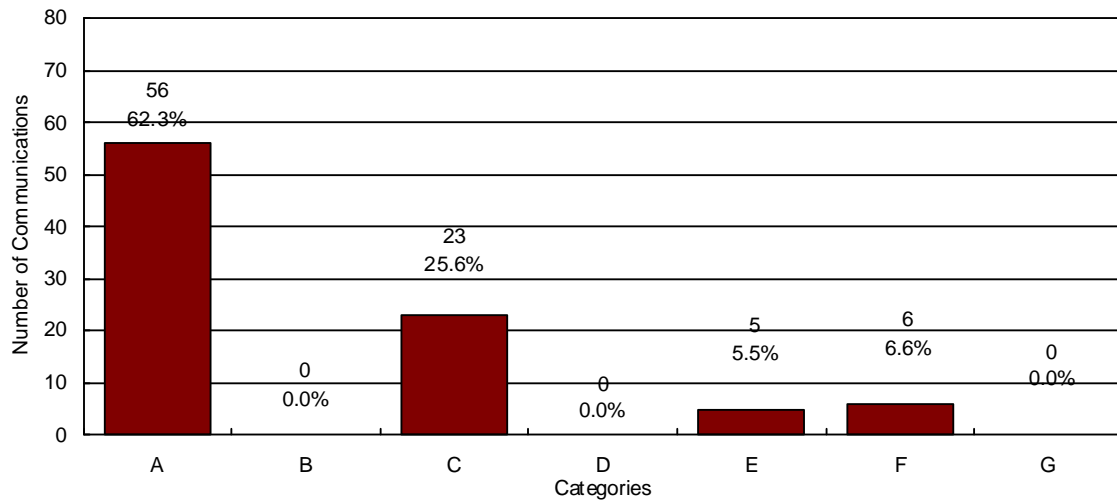
Chart 1 shows that the number of CPS reports received by the CPS Hotline has decreased over the past year. Comparing the current reporting period to the prior reporting period, the number of reports received decreased by 399 reports or 2.3 percent.

**CHART 1  
REPORTS OF CHILD ABUSE AND NEGLECT BY REPORTING PERIOD**



In addition to the 17,094 reports during the current reporting period, the Child Abuse Hotline received 12,052 communications that did not meet the statutory criteria of a report of maltreatment. A random sample of these communications is contained in the chart below.

**CHART 2  
SAMPLE OF COMMUNICATIONS TO THE CHILD ABUSE HOTLINE THAT DO NOT MEET THE STATUTORY REQUIREMENTS OF A REPORT OF ABUSE OR NEGLECT**



N=90

- A = Concern Only/No Allegation of Child Abuse or Neglect**
- B = Out of CPS Jurisdiction**
- C = Call Appropriate for Law Enforcement Jurisdiction<sup>2</sup>**
- D = Non-Caretaker Neglect/Child No Longer at Risk**
- E = Insufficient Information**
- F = Truancy/Custody Issues**
- G = Current Case Questions or Referrals**

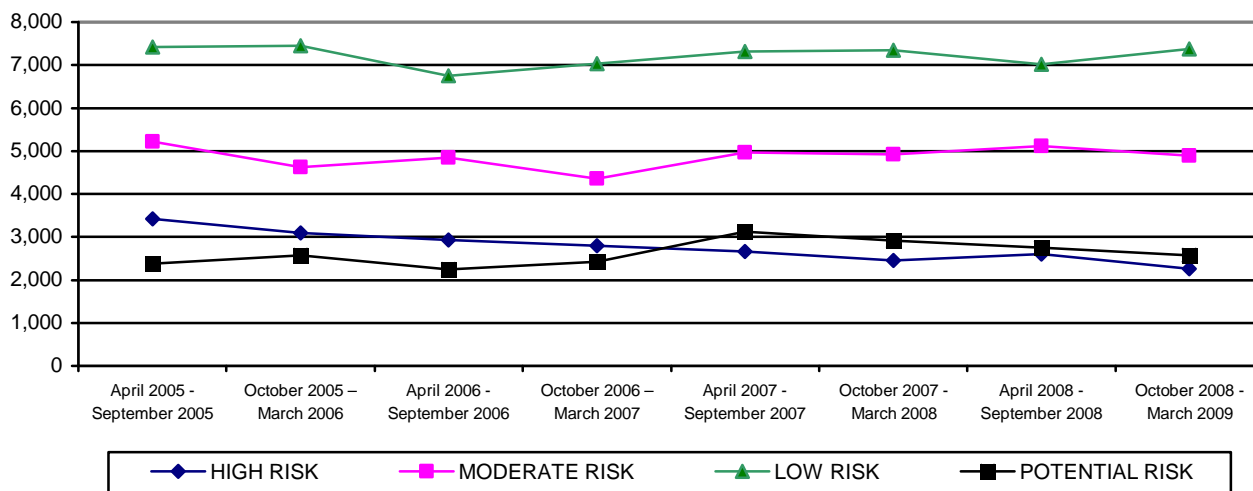
All communications that do not meet the statutory requirements for a field investigation of abuse or neglect are reviewed within 48 hours by DES quality assurance staff.

<sup>2</sup> The category "Call Appropriate for Law Enforcement Jurisdiction" refers to a situation where the alleged perpetrator is not a parent or primary caretaker and the allegations, if true, would constitute a crime.

For the current reporting period, the CPS Hotline classified 13.2 percent of the reports received as high risk, 28.7 percent as moderate risk, 43.1 percent as low risk, and 15.0 percent as potential risk.

For the current reporting period, the CPS Hotline classified 1.2 percent of CPS reports as emotional abuse, 57.6 percent as neglect, 35.5 percent as physical abuse, and 5.7 percent as sexual abuse.

**CHART 3  
NUMBER OF REPORTS RECEIVED BY RISK LEVEL**



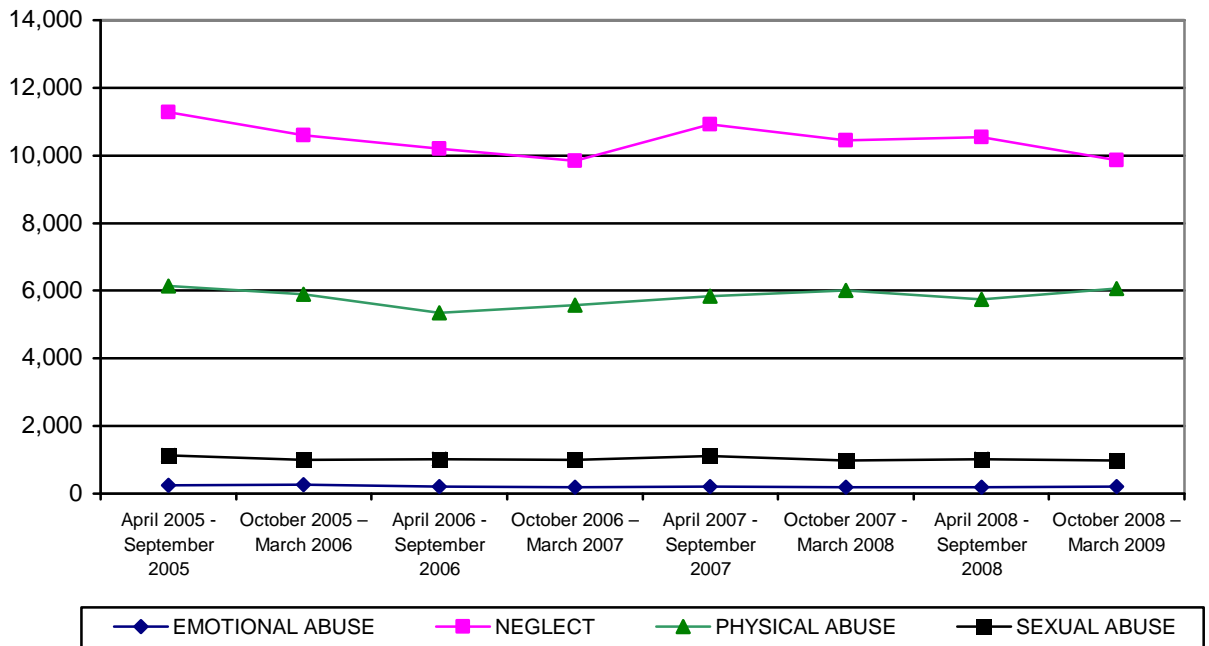
**TABLE 2  
NUMBER OF REPORTS RECEIVED BY RISK LEVEL AND COUNTY FOR PERIOD OF  
OCTOBER 1, 2008 THROUGH MARCH 31, 2009**

COUNTY	HIGH	MODERATE	LOW	POTENTIAL	TOTAL	% OF TOTAL
APACHE	17	20	30	11	78	0.5%
COCHISE	58	120	213	61	452	2.6%
COCONINO	42	111	160	58	371	2.2%
GILA	8	12	27	5	52	0.3%
GRAHAM	10	26	38	16	90	0.5%
GREENLEE	3	4	5	1	13	0.1%
LA PAZ	8	12	18	7	45	0.3%
MARICOPA	1,420	2,832	4,288	1,491	10,031	58.6%
MOHAVE	68	202	246	68	584	3.4%
NAVAJO	41	79	111	34	265	1.6%
PIMA	336	886	1,430	514	3,166	18.5%
PINAL	139	301	418	159	1,017	6.0%
SANTA CRUZ	3	6	7	8	24	0.1%
YAVAPAI	42	180	242	81	545	3.2%
YUMA	60	108	141	52	361	2.1%
STATEWIDE	2,255	4,899	7,374	2,566	17,094	100.0%
% OF TOTAL	13.2%	28.7%	43.1%	15.0%	100.0%	

**TABLE 3**  
**NUMBER OF REPORTS RECEIVED BY RISK LEVEL AND COUNTY FOR PERIOD OF**  
**APRIL 1, 2008 THROUGH SEPTEMBER 30, 2008**

COUNTY	HIGH	MODERATE	LOW	POTENTIAL	TOTAL	% OF TOTAL
APACHE	10	20	39	7	76	0.4%
COCHISE	48	127	163	66	404	2.3%
COCONINO	69	108	119	51	347	2.0%
GILA	16	55	57	20	148	0.9%
GRAHAM	9	38	38	17	102	0.6%
GREENLEE	2	3	6	4	15	0.1%
LA PAZ	10	18	26	16	70	0.4%
MARICOPA	1,630	2,893	4,072	1,627	10,222	58.4%
MOHAVE	86	212	254	73	625	3.6%
NAVAJO	63	87	120	47	317	1.8%
PIMA	399	941	1,320	538	3,198	18.3%
PINAL	147	287	399	150	983	5.6%
SANTA CRUZ	10	25	28	11	74	0.4%
YAVAPAI	55	181	221	71	528	3.0%
YUMA	52	120	154	58	384	2.2%
STATEWIDE	2,606	5,115	7,016	2,756	17,493	100.0%
% OF TOTAL	14.9%	29.2%	40.1%	15.8%	100.0%	

**CHART 4**  
**NUMBER OF REPORTS RECEIVED BY TYPE OF MALTREATMENT**



**TABLE 4**  
**NUMBER OF REPORTS RECEIVED BY TYPE OF MALTREATMENT AND COUNTY FOR**  
**PERIOD OF OCTOBER 1, 2008 THROUGH MARCH 31, 2009**

COUNTY	EMOTIONAL ABUSE	NEGLECT	PHYSICAL ABUSE	SEXUAL ABUSE	TOTAL	% OF TOTAL
APACHE	1	52	23	2	78	0.5%
COCHISE	13	248	163	28	452	2.6%
COCONINO	6	203	141	21	371	2.2%
GILA	2	35	14	1	52	0.3%
GRAHAM	3	54	29	4	90	0.5%
GREENLEE	0	10	3	0	13	0.1%
LA PAZ	1	27	16	1	45	0.3%
MARICOPA	103	5,712	3,620	596	10,031	58.6%
MOHAVE	5	356	193	30	584	3.4%
NAVAJO	4	167	85	9	265	1.6%
PIMA	45	1,811	1,126	184	3,166	18.5%
PINAL	10	604	355	48	1,017	6.0%
SANTA CRUZ	1	9	11	3	24	0.1%
YAVAPAI	12	323	183	27	545	3.2%
YUMA	4	234	102	21	361	2.1%
STATEWIDE	210	9,845	6,064	975	17,094	100.0%
% OF TOTAL	1.2%	57.6%	35.5%	5.7%	100.0%	

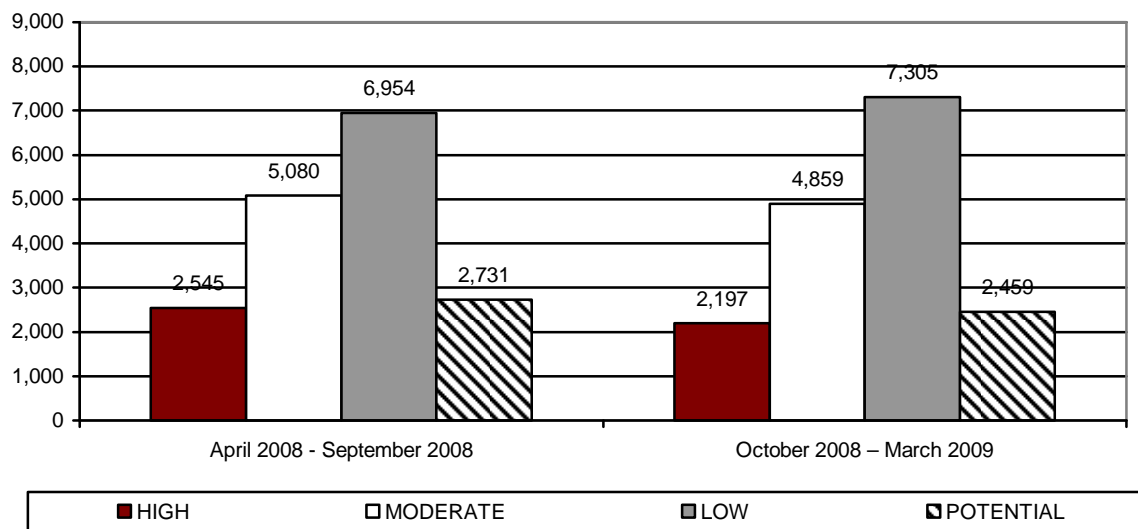
**TABLE 5**  
**NUMBER OF REPORTS RECEIVED BY TYPE OF MALTREATMENT AND COUNTY FOR**  
**PERIOD OF APRIL 1, 2008 THROUGH SEPTEMBER 30, 2008**

COUNTY	EMOTIONAL ABUSE	NEGLECT	PHYSICAL ABUSE	SEXUAL ABUSE	TOTAL	% OF TOTAL
APACHE	0	49	23	4	76	0.4%
COCHISE	3	257	122	22	404	2.3%
COCONINO	2	220	97	28	347	2.0%
GILA	1	107	27	13	148	0.9%
GRAHAM	1	68	23	10	102	0.6%
GREENLEE	0	12	1	2	15	0.1%
LA PAZ	0	41	27	2	70	0.4%
MARICOPA	105	6,087	3,454	576	10,222	58.4%
MOHAVE	7	377	200	41	625	3.6%
NAVAJO	4	197	99	17	317	1.8%
PIMA	44	1,892	1,088	174	3,198	18.3%
PINAL	12	606	300	65	983	5.6%
SANTA CRUZ	0	47	21	6	74	0.4%
YAVAPAI	7	338	143	40	528	3.0%
YUMA	3	241	112	28	384	2.2%
STATEWIDE	189	10,539	5,737	1,028	17,493	100.0%
% OF TOTAL	1.1%	60.2%	32.8%	5.9%	100.0%	

**ASSIGNMENT OF INVESTIGATIONS**

During the reporting period, there were 17,094 calls to the hotline that met the statutory criteria for a report. Of those, 198 reports fell within the jurisdiction of military or tribal governments and 76 reports were not investigated. This left 16,820 reports that were assigned to be investigated by CPS. The following tables and charts in this section provide statewide and county level information on these reports.

**CHART 5  
NUMBER OF REPORTS ASSIGNED FOR INVESTIGATION BY RISK LEVEL AND REPORTING PERIOD**



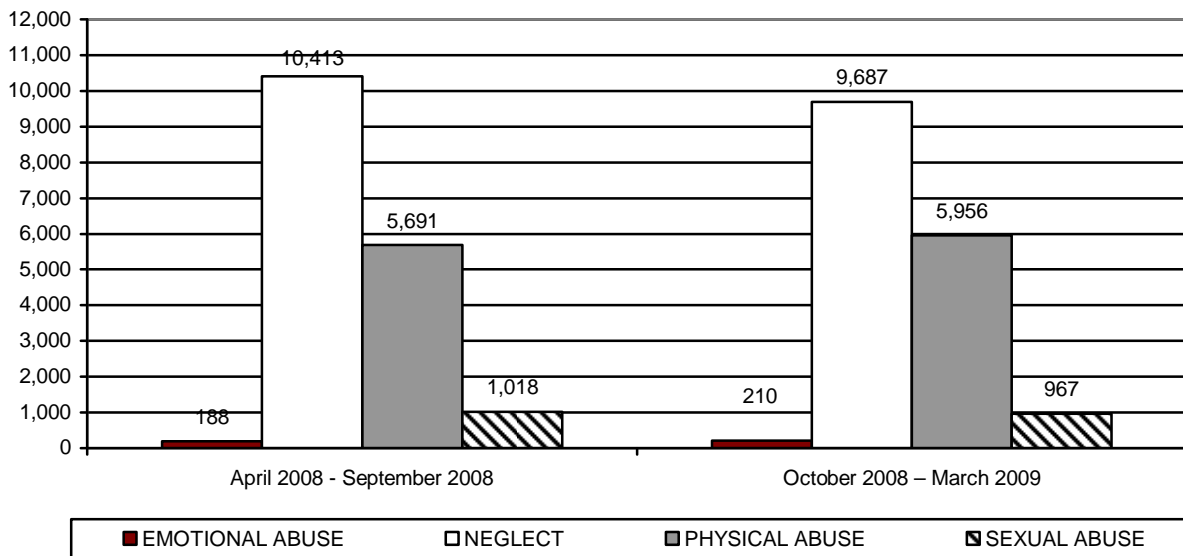
**TABLE 6  
NUMBER OF REPORTS ASSIGNED FOR INVESTIGATION BY RISK LEVEL AND COUNTY  
FOR PERIOD OF OCTOBER 1, 2008 THROUGH MARCH 31, 2009**

COUNTY	HIGH	MODERATE	LOW	POTENTIAL	TOTAL	% OF TOTAL
APACHE	11	16	25	7	59	0.4%
COCHISE	58	120	212	60	450	2.7%
COCONINO	37	98	139	46	320	1.9%
GILA	7	12	27	5	51	0.3%
GRAHAM	10	26	37	16	89	0.5%
GREENLEE	3	4	5	1	13	0.1%
LA PAZ	7	10	18	6	41	0.2%
MARICOPA	1,405	2,827	4,274	1,439	9,945	59.2%
MOHAVE	65	201	245	66	577	3.4%
NAVAJO	27	71	101	29	228	1.4%
PIMA	333	883	1,422	497	3,135	18.6%
PINAL	129	297	410	152	988	5.9%
SANTA CRUZ	3	6	7	7	23	0.1%
YAVAPAI	42	180	242	79	543	3.2%
YUMA	60	108	141	49	358	2.1%
STATEWIDE	2,197	4,859	7,305	2,459	16,820	100.0%
% OF TOTAL	13.1%	28.9%	43.4%	14.6%	100.0%	

**TABLE 7  
NUMBER OF REPORTS ASSIGNED FOR INVESTIGATION BY RISK LEVEL AND COUNTY  
FOR PERIOD OF APRIL 1, 2008 THROUGH SEPTEMBER 30, 2008**

COUNTY	HIGH	MODERATE	LOW	POTENTIAL	TOTAL	% OF TOTAL
APACHE	8	18	31	4	61	0.4%
COCHISE	47	127	161	66	401	2.3%
COCONINO	58	102	108	48	316	1.8%
GILA	14	55	56	20	145	0.8%
GRAHAM	9	37	38	17	101	0.6%
GREENLEE	2	3	6	4	15	0.1%
LA PAZ	7	17	21	14	59	0.3%
MARICOPA	1,622	2,885	4,056	1,620	10,183	58.9%
MOHAVE	82	211	252	73	618	3.6%
NAVAJO	45	82	110	43	280	1.6%
PIMA	396	936	1,317	533	3,182	18.4%
PINAL	138	283	395	149	965	5.6%
SANTA CRUZ	10	25	28	11	74	0.4%
YAVAPAI	55	180	221	71	527	3.0%
YUMA	52	119	154	58	383	2.2%
STATEWIDE	2,545	5,080	6,954	2,731	17,310	100.0%
% OF TOTAL	14.7%	29.4%	40.1%	15.8%	100.0%	

**CHART 6  
NUMBER OF REPORTS ASSIGNED FOR INVESTIGATION BY TYPE OF MALTREATMENT  
AND REPORTING PERIOD**





**TABLE 8**  
**NUMBER OF REPORTS ASSIGNED FOR INVESTIGATION BY TYPE OF MALTREATMENT**  
**BY COUNTY FOR PERIOD OF OCTOBER 1, 2008 THROUGH MARCH 31, 2009**

COUNTY	EMOTIONAL ABUSE	NEGLECT	PHYSICAL ABUSE	SEXUAL ABUSE	TOTAL	% OF TOTAL
APACHE	1	38	19	1	59	0.4%
COCHISE	13	246	163	28	450	2.7%
COCONINO	6	178	118	18	320	1.9%
GILA	2	34	14	1	51	0.3%
GRAHAM	3	53	29	4	89	0.5%
GREENLEE	0	10	3	0	13	0.1%
LA PAZ	1	26	13	1	41	0.2%
MARICOPA	103	5,673	3,573	596	9,945	59.2%
MOHAVE	5	349	193	30	577	3.4%
NAVAJO	4	141	75	8	228	1.4%
PIMA	45	1,790	1,116	184	3,135	18.6%
PINAL	10	585	348	45	988	5.9%
SANTA CRUZ	1	9	10	3	23	0.1%
YAVAPAI	12	322	182	27	543	3.2%
YUMA	4	233	100	21	358	2.1%
STATEWIDE	210	9,687	5,956	967	16,820	100.0%
% OF TOTAL	1.3%	57.5%	35.4%	5.8%	100.0%	

**TABLE 9**  
**NUMBER OF REPORTS ASSIGNED FOR INVESTIGATION BY TYPE OF MALTREATMENT**  
**BY COUNTY FOR PERIOD OF APRIL 1, 2008 THROUGH SEPTEMBER 30, 2008**

COUNTY	EMOTIONAL ABUSE	NEGLECT	PHYSICAL ABUSE	SEXUAL ABUSE	TOTAL	% OF TOTAL
APACHE	0	41	18	2	61	0.4%
COCHISE	3	255	121	22	401	2.3%
COCONINO	2	200	89	25	316	1.8%
GILA	1	104	27	13	145	0.8%
GRAHAM	1	67	23	10	101	0.6%
GREENLEE	0	12	1	2	15	0.1%
LA PAZ	0	34	23	2	59	0.3%
MARICOPA	105	6,056	3,446	576	10,183	58.9%
MOHAVE	7	371	199	41	618	3.6%
NAVAJO	3	173	89	15	280	1.6%
PIMA	44	1,884	1,081	173	3,182	18.4%
PINAL	12	592	298	63	965	5.6%
SANTA CRUZ	0	47	21	6	74	0.4%
YAVAPAI	7	337	143	40	527	3.0%
YUMA	3	240	112	28	383	2.2%
STATEWIDE	188	10,413	5,691	1,018	17,310	100.0%
% OF TOTAL	1.1%	60.1%	32.9%	5.9%	100.0%	

During this reporting period, there were 16,820 reports assigned for investigation. Of these, CPS completed 10,686 investigations or 63.5 percent. Investigations not completed remain open when the investigation is still in process, when the CPS specialist is waiting for the results of a law enforcement investigation and/or receipt of records that impact the investigation finding, or when the investigation has been completed but is awaiting supervisory review and approval.

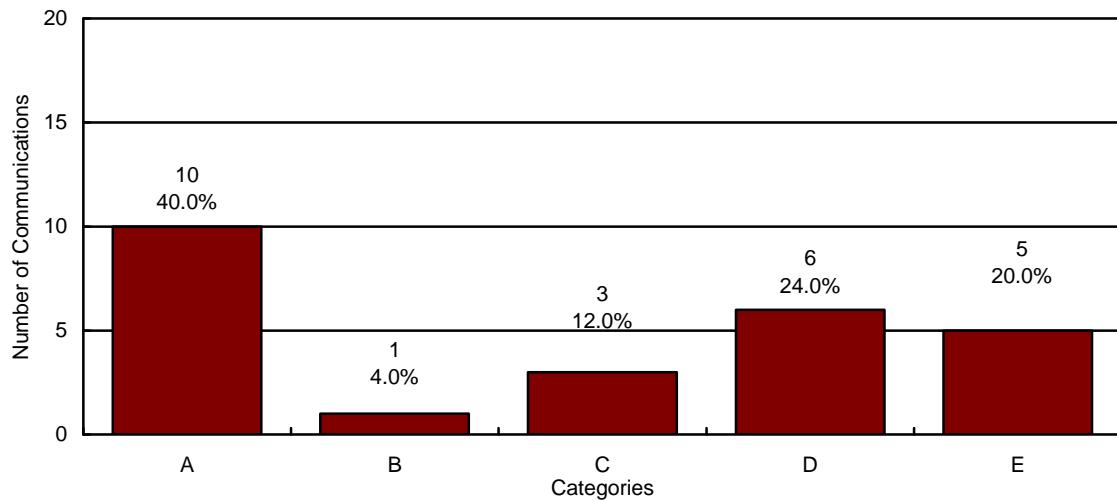
### **INVESTIGATIONS OF CHILD ABUSE AND NEGLECT**

**TABLE 10  
NUMBER OF REPORTS NOT RESPONDED TO BY RISK LEVEL AND COUNTY FOR  
PERIOD OF OCTOBER 1, 2008 THROUGH MARCH 31, 2009**

COUNTY	HIGH	MODERATE	LOW	POTENTIAL	TOTAL	% OF TOTAL
APACHE	0	0	0	0	0	0.0%
COCHISE	0	0	0	1	1	1.3%
COCONINO	0	0	0	1	1	1.3%
GILA	0	0	0	0	0	0.0%
GRAHAM	0	0	0	0	0	0.0%
GREENLEE	0	0	0	0	0	0.0%
LA PAZ	0	0	0	0	0	0.0%
MARICOPA	0	0	0	48	48	63.3%
MOHAVE	0	0	0	2	2	2.6%
NAVAJO	0	0	0	2	2	2.6%
PIMA	0	0	0	14	14	18.4%
PINAL	0	0	0	2	2	2.6%
SANTA CRUZ	0	0	0	1	1	1.3%
YAVAPAI	0	0	0	2	2	2.6%
YUMA	0	0	0	3	3	4.0%
STATEWIDE	0	0	0	76	76	100.0%
% OF TOTAL	0.0%	0.0%	0.0%	100.0%	100.0%	

By statute, a random sample of reports not responded to for the period is required. For the current reporting period there were 76 reports that were not responded to. A random sample of 25 reports not responded to were reviewed. Of the 25 reports reviewed 84.0 percent were received from mandated reporting sources. Chart 7 displays the 25 reports in brief descriptive categories.

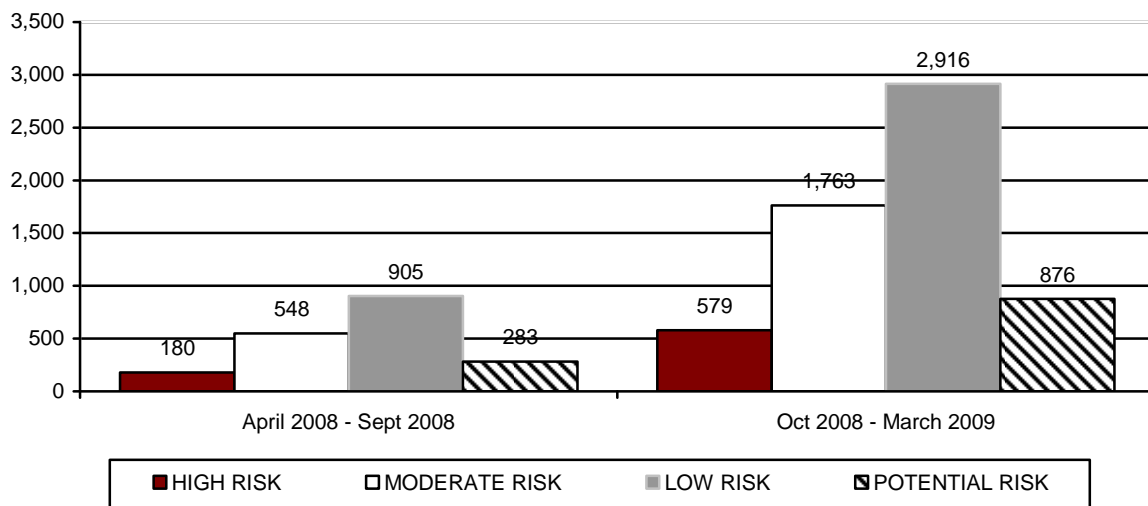
**CHART 7**  
**NUMBER OF REPORTS NOT RESPONDED TO BY CATEGORY FOR THE PERIOD OF**  
**OCTOBER 1, 2008 THROUGH MARCH 31, 2009**



N=25

- A= Adolescent, Past abuse, No current Injuries**
- B= Inadequate Housekeeping Standards**
- C= Inappropriate Vehicle Operation**
- D= No Specific Allegations**
- E= Past abuse no current injuries**

**CHART 8**  
**NUMBER OF REPORTS ASSIGNED FOR INVESTIGATION BY RISK LEVEL AND**  
**REPORTING PERIOD FOR REPORTS STILL OPEN FOR INVESTIGATION**



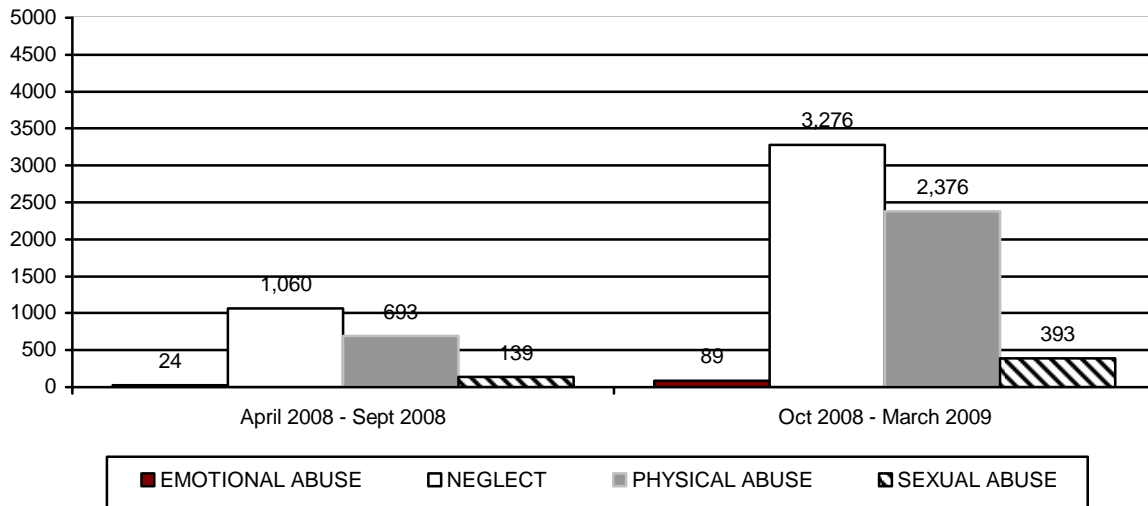
**TABLE 11**  
**NUMBER OF REPORTS BY RISK LEVEL AND COUNTY FOR REPORTS STILL OPEN FOR**  
**INVESTIGATION FOR PERIOD OF OCTOBER 1, 2008 THROUGH MARCH 31, 2009**

COUNTY	HIGH	MODERATE	LOW	POTENTIAL	TOTAL	% OF TOTAL
APACHE	0	3	5	0	8	0.1%
COCHISE	8	27	29	5	69	1.1%
COCONINO	1	4	5	3	13	0.2%
GILA	4	9	20	5	38	0.6%
GRAHAM	7	16	19	5	47	0.8%
GREENLEE	3	2	2	0	7	0.1%
LA PAZ	1	5	2	0	8	0.1%
MARICOPA	341	976	1,646	472	3,435	55.9%
MOHAVE	19	70	85	19	193	3.2%
NAVAJO	5	24	33	11	73	1.2%
PIMA	92	343	659	223	1,317	21.5%
PINAL	62	165	272	94	593	9.7%
SANTA CRUZ	0	1	0	2	3	0.1%
YAVAPAI	5	42	33	9	89	1.5%
YUMA	31	76	106	28	241	3.9%
STATEWIDE	579	1,763	2,916	876	6,134	100.0%
% OF TOTAL	9.4%	28.7%	47.6%	14.3%	100.0%	

**TABLE 12**  
**NUMBER OF REPORTS BY RISK LEVEL AND COUNTY FOR REPORTS STILL OPEN FOR**  
**INVESTIGATION FOR PERIOD OF APRIL 1, 2008 THROUGH SEPTEMBER 30, 2008**

COUNTY	HIGH	MODERATE	LOW	POTENTIAL	TOTAL	% OF TOTAL
APACHE	0	1	0	1	2	0.1%
COCHISE	0	1	4	3	8	0.4%
COCONINO	0	0	1	1	2	0.1%
GILA	3	8	6	5	22	1.2%
GRAHAM	1	10	7	2	20	1.0%
GREENLEE	0	0	2	2	4	0.2%
LA PAZ	0	0	0	0	0	0.0%
MARICOPA	72	185	361	92	710	37.1%
MOHAVE	12	37	47	12	108	5.6%
NAVAJO	2	12	15	5	34	1.8%
PIMA	63	213	334	116	726	37.8%
PINAL	20	54	87	32	193	10.1%
SANTA CRUZ	0	0	0	0	0	0.0%
YAVAPAI	0	2	2	1	5	0.3%
YUMA	7	25	39	11	82	4.3%
STATEWIDE	180	548	905	283	1,916	100.0%
% OF TOTAL	9.4%	28.6%	47.2%	14.8%	100.0%	

**CHART 9  
NUMBER OF REPORTS ASSIGNED FOR INVESTIGATION BY TYPE OF MALTREATMENT  
FOR REPORTS STILL OPEN FOR INVESTIGATION**



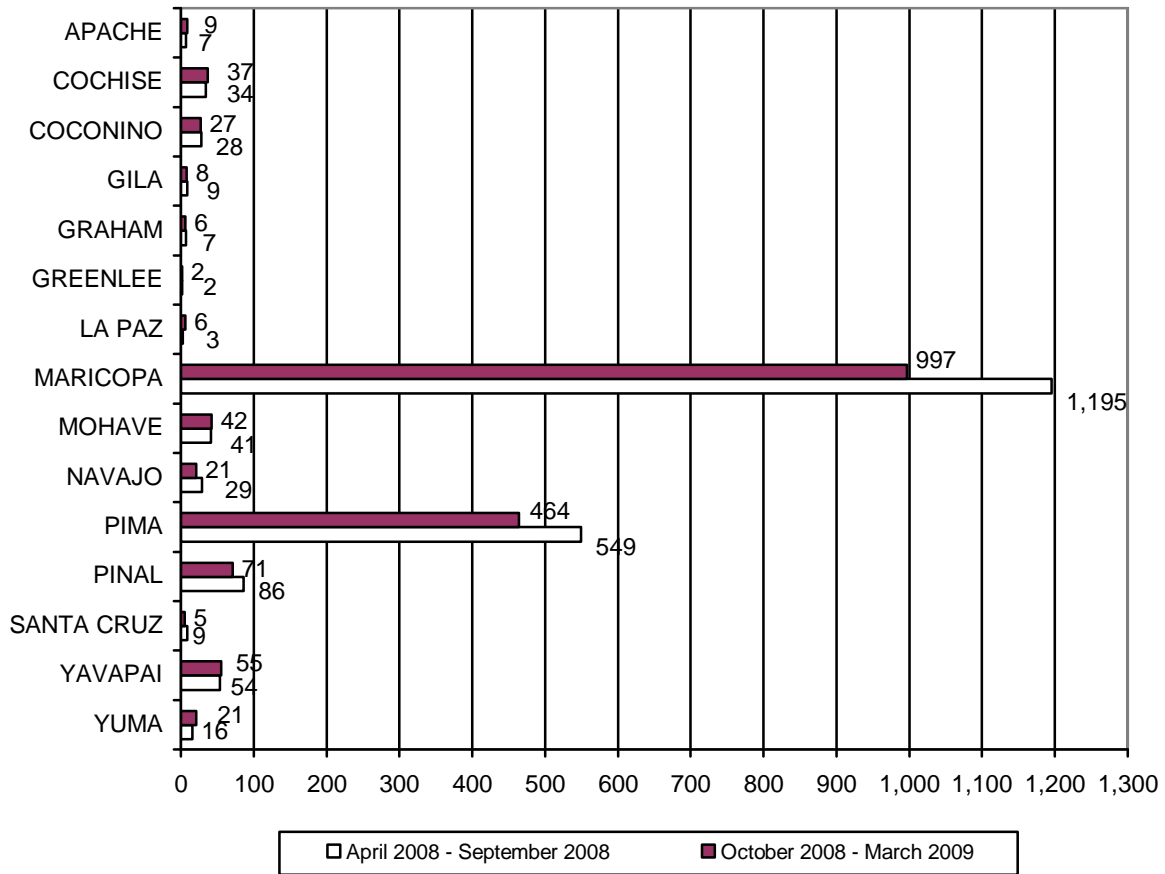
**TABLE 13  
NUMBER OF REPORTS BY TYPE OF MALTREATMENT AND COUNTY FOR REPORTS  
STILL OPEN FOR INVESTIGATION FOR PERIOD OF  
OCTOBER 1, 2008 THROUGH MARCH 31, 2009**

COUNTY	EMOTIONAL ABUSE	NEGLECT	PHYSICAL ABUSE	SEXUAL ABUSE	TOTAL	% OF TOTAL
APACHE	0	6	2	0	8	0.1%
COCHISE	5	44	15	5	69	1.1%
COCONINO	1	10	2	0	13	0.2%
GILA	0	23	14	1	38	0.6%
GRAHAM	2	27	17	1	47	0.8%
GREENLEE	0	6	1	0	7	0.1%
LA PAZ	0	4	4	0	8	0.1%
MARICOPA	42	1,765	1,388	240	3,435	55.9%
MOHAVE	4	103	73	13	193	3.2%
NAVAJO	2	40	24	7	73	1.2%
PIMA	22	712	509	74	1,317	21.5%
PINAL	7	338	219	29	593	9.7%
SANTA CRUZ	0	2	1	0	3	0.1%
YAVAPAI	1	50	30	8	89	1.5%
YUMA	3	146	77	15	241	3.9%
STATEWIDE	89	3,276	2,376	393	6,134	100.0%
% OF TOTAL	1.5%	53.4%	38.7%	6.4%	100.0%	

**TABLE 14**  
**NUMBER OF REPORTS BY TYPE OF MALTREATMENT AND COUNTY FOR REPORTS**  
**STILL OPEN FOR INVESTIGATION FOR PERIOD OF**  
**APRIL 1, 2008 THROUGH SEPTEMBER 30, 2008**

COUNTY	EMOTIONAL ABUSE	NEGLECT	PHYSICAL ABUSE	SEXUAL ABUSE	TOTAL	% OF TOTAL
APACHE	0	0	2	0	2	0.1%
COCHISE	0	3	5	0	8	0.4%
COCONINO	0	2	0	0	2	0.1%
GILA	0	15	7	0	22	1.2%
GRAHAM	0	12	3	5	20	1.0%
GREENLEE	0	3	1	0	4	0.2%
LA PAZ	0	0	0	0	0	0.0%
MARICOPA	10	358	288	54	710	37.1%
MOHAVE	2	65	29	12	108	5.6%
NAVAJO	0	20	10	4	34	1.8%
PIMA	9	407	261	49	726	37.8%
PINAL	3	116	64	10	193	10.1%
SANTA CRUZ	0	0	0	0	0	0.0%
YAVAPAI	0	3	1	1	5	0.3%
YUMA	0	56	22	4	82	4.3%
STATEWIDE	24	1,060	693	139	1,916	100.0%
% OF TOTAL	1.3%	55.2%	36.2%	7.3%	100.0%	

**CHART 10**  
**NUMBER OF REPORTS ASSIGNED FOR INVESTIGATION WHERE A REMOVAL OCCURRED**



**TABLE 15**  
**NUMBER OF REPORTS ASSIGNED FOR INVESTIGATION BY COUNTY WHERE A**  
**REMOVAL OCCURRED FOR THE PERIOD OCTOBER 1, 2008 THROUGH MARCH 31, 2009**

COUNTY	NUMBER OF REPORTS ASSIGNED	NUMBER OF REPORTS ASSIGNED WITH A REMOVAL	% OF REPORTS WHERE A CHILD WAS PLACED IN OUT-OF-HOME CARE
APACHE	59	9	15.3%
COCHISE	451	37	8.2%
COCONINO	321	27	8.4%
GILA	51	8	15.7%
GRAHAM	89	6	6.7%
GREENLEE	13	2	15.4%
LA PAZ	41	6	14.6%
MARICOPA	9,993	997	10.0%
MOHAVE	579	42	7.3%
NAVAJO	230	21	9.1%
PIMA	3,149	464	14.7%
PINAL	990	71	7.2%
SANTA CRUZ	24	5	20.8%
YAVAPAI	545	55	10.1%
YUMA	361	21	5.8%
STATEWIDE	16,896	1,771	10.5%

**TABLE 16**  
**NUMBER OF REPORTS ASSIGNED FOR INVESTIGATION BY COUNTY WHERE A**  
**REMOVAL OCCURRED FOR THE PERIOD APRIL 1, 2008 THROUGH SEPTEMBER 30, 2008**

COUNTY	NUMBER OF REPORTS ASSIGNED	NUMBER OF REPORTS ASSIGNED WITH A REMOVAL	% OF REPORTS WHERE A CHILD WAS PLACED IN OUT-OF-HOME CARE
APACHE	61	7	11.5%
COCHISE	401	34	8.5%
COCONINO	316	28	8.9%
GILA	145	9	6.2%
GRAHAM	101	7	6.9%
GREENLEE	15	2	13.3%
LA PAZ	59	3	5.1%
MARICOPA	10,183	1,195	11.7%
MOHAVE	618	41	6.6%
NAVAJO	280	29	10.4%
PIMA	3,182	549	17.3%
PINAL	965	86	8.9%
SANTA CRUZ	74	9	12.2%
YAVAPAI	527	54	10.3%
YUMA	383	16	4.2%
STATEWIDE	17,310	2,069	12.0%



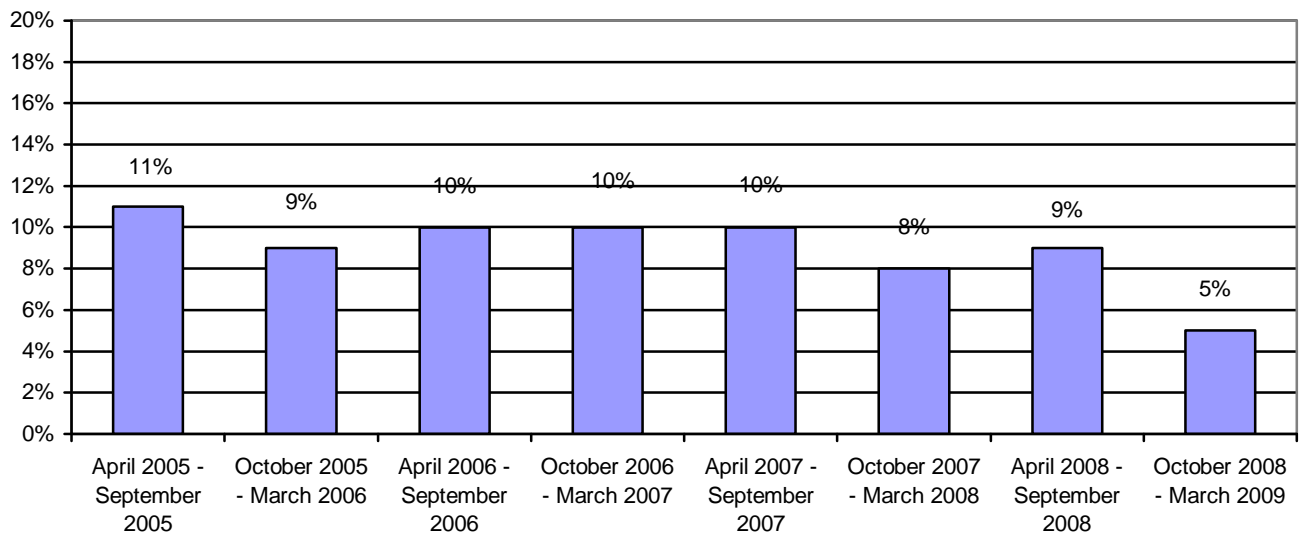
**COMPLETED INVESTIGATIONS**

Substantiated reports are reports where the Department has determined that at least one of the allegations in the report of abuse and neglect is true. The number of reports that are considered substantiated are a subset of the total number of reports that were received, investigated, and closed during the reporting period.

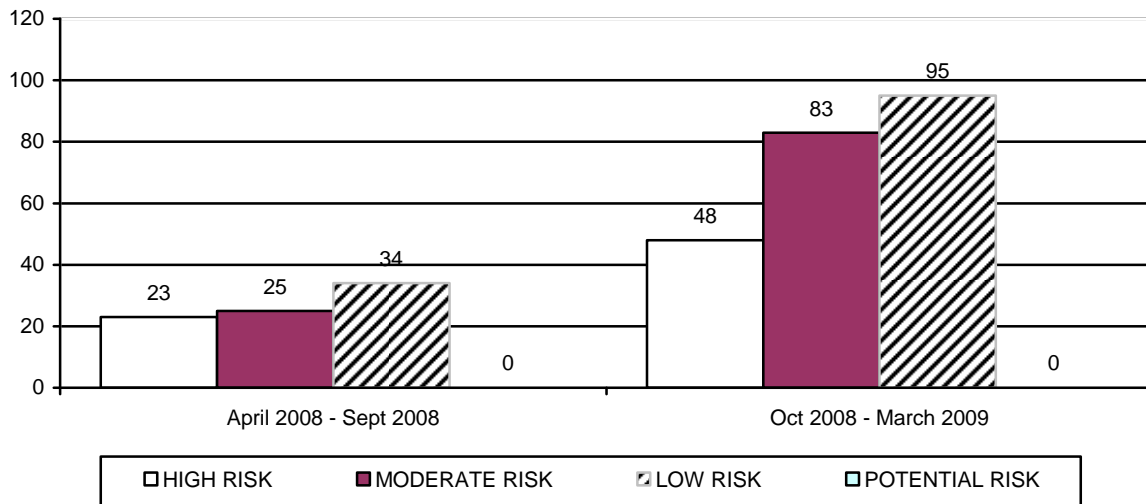
The preliminary number of CPS reports that are substantiated for this reporting period is 652. For the prior reporting period, the number of CPS reports that were assigned for investigation that resulted in substantiated findings was revised from 856 to 1,306 to reflect subsequent decisions based on parents' rights to due process. For the current reporting period, 31.0 percent of substantiated investigative findings were classified as high risk, 37.4 percent as moderate risk, and 31.6 percent as low risk. Potential risk reports are not substantiated by CPS. For the prior reporting period, 29.9 percent of substantiated investigative findings were classified as high risk, 40.1 percent as moderate risk, and 30.0 percent as low risk.

- There were 14,361 reports received during the current reporting period that were subject to substantiation. This results in a preliminary substantiation rate of 5 percent for the current reporting period.
- There were 14,579 reports received during the prior reporting period that were subject to substantiation. This results in a 9 percent substantiation rate for the prior reporting period.

**CHART 11  
SUBSTANTIATION RATE BY REPORTING PERIOD**



**CHART 12**  
**NUMBER OF REPORTS ASSIGNED FOR INVESTIGATION BY RISK LEVEL AND REPORTING PERIOD THAT RESULTED IN PROPOSED SUBSTANTIATION**



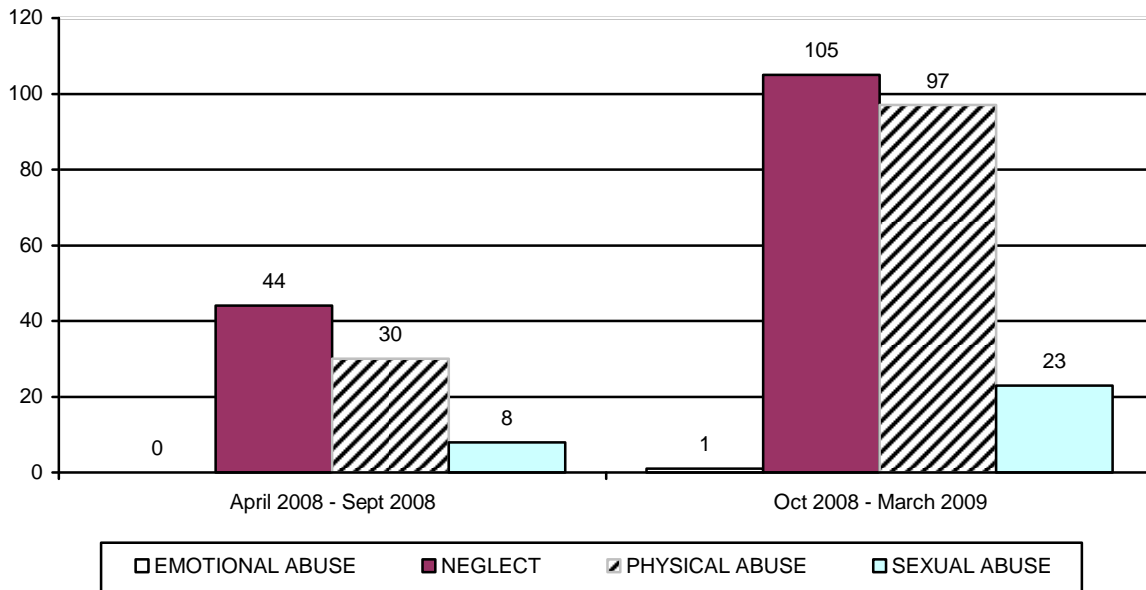
**TABLE 17**  
**NUMBER OF REPORTS ASSIGNED FOR INVESTIGATION BY RISK LEVEL AND COUNTY THAT RESULTED IN PROPOSED SUBSTANTIATION FOR PERIOD OF OCTOBER 1, 2008 THROUGH MARCH 31, 2009**

COUNTY	HIGH	MODERATE	LOW	POTENTIAL	TOTAL	% OF TOTAL
APACHE	0	1	0	0	1	0.4%
COCHISE	0	2	3	0	5	2.2%
COCONINO	0	2	5	0	7	3.1%
GILA	1	1	1	0	3	1.3%
GRAHAM	0	0	0	0	0	0.0%
GREENLEE	0	1	0	0	1	0.4%
LA PAZ	0	0	0	0	0	0.0%
MARICOPA	23	53	59	0	135	59.8%
MOHAVE	3	4	2	0	9	4.0%
NAVAJO	2	3	1	0	6	2.7%
PIMA	11	9	18	0	38	16.8%
PINAL	1	4	2	0	7	3.1%
SANTA CRUZ	0	0	0	0	0	0.0%
YAVAPAI	4	3	4	0	11	4.9%
YUMA	3	0	0	0	3	1.3%
STATEWIDE	48	83	95	0	226	100.0%
% OF TOTAL	21.2%	36.7%	42.1%	0.0%	100.0%	

**TABLE 18**  
**NUMBER OF REPORTS ASSIGNED FOR INVESTIGATION BY RISK LEVEL AND COUNTY**  
**THAT RESULTED IN PROPOSED SUBSTANTIATION FOR PERIOD OF**  
**APRIL 1, 2008 THROUGH SEPTEMBER 30, 2008**

COUNTY	HIGH	MODERATE	LOW	POTENTIAL	TOTAL	% OF TOTAL
APACHE	0	0	0	0	0	0.0%
COCHISE	1	1	1	0	3	3.7%
COCONINO	2	0	0	0	2	2.4%
GILA	1	0	0	0	1	1.2%
GRAHAM	0	0	0	0	0	0.0%
GREENLEE	0	0	0	0	0	0.0%
LA PAZ	0	0	0	0	0	0.0%
MARICOPA	13	18	27	0	58	70.8%
MOHAVE	1	0	0	0	1	1.2%
NAVAJO	0	1	1	0	2	2.4%
PIMA	4	5	2	0	11	13.4%
PINAL	1	0	3	0	4	4.9%
SANTA CRUZ	0	0	0	0	0	0.0%
YAVAPAI	0	0	0	0	0	0.0%
YUMA	0	0	0	0	0	0.0%
STATEWIDE	23	25	34	0	82	100.1%
% OF TOTAL	28.1%	30.5%	41.4%	0.0%	100.0%	

**CHART 13**  
**NUMBER OF REPORTS ASSIGNED FOR INVESTIGATION BY TYPE OF MALTREATMENT**  
**THAT RESULTED IN PROPOSED SUBSTANTIATION**



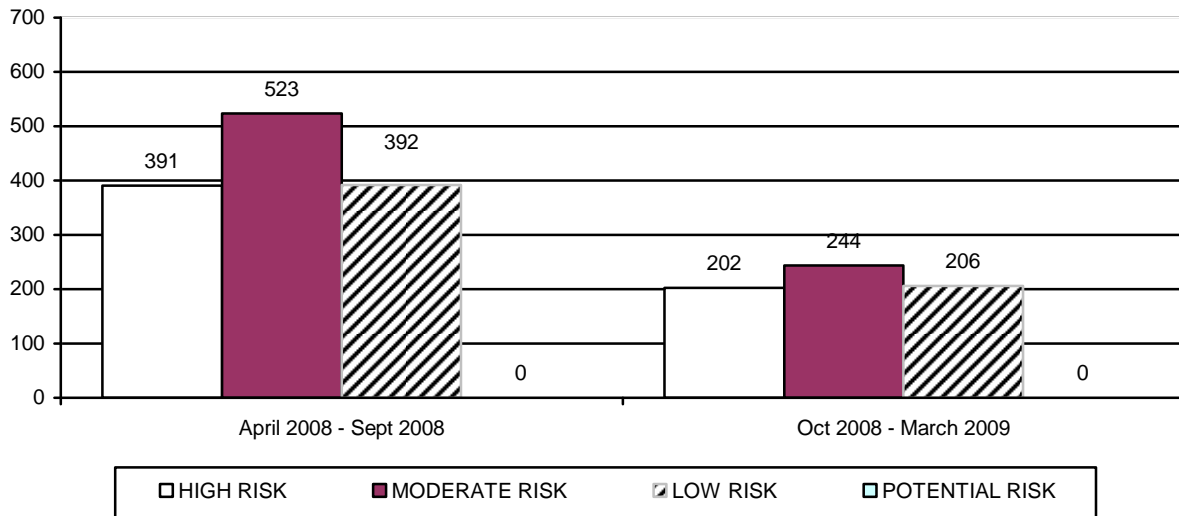
**TABLE 19**  
**NUMBER OF REPORTS ASSIGNED FOR INVESTIGATION BY TYPE OF MALTREATMENT**  
**BY COUNTY THAT RESULTED IN PROPOSED SUBSTANTIATION FOR PERIOD OF**  
**OCTOBER 1, 2008 THROUGH MARCH 31, 2009**

COUNTY	EMOTIONAL ABUSE	NEGLECT	PHYSICAL ABUSE	SEXUAL ABUSE	TOTAL	% OF TOTAL
APACHE	0	1	0	0	1	0.4%
COCHISE	0	2	3	0	5	2.2%
COCONINO	0	2	5	0	7	3.1%
GILA	0	3	0	0	3	1.3%
GRAHAM	0	0	0	0	0	0.0%
GREENLEE	0	1	0	0	1	0.4%
LA PAZ	0	0	0	0	0	0.0%
MARICOPA	0	53	65	17	135	59.8%
MOHAVE	0	7	2	0	9	4.0%
NAVAJO	0	3	2	1	6	2.7%
PIMA	1	20	13	4	38	16.8%
PINAL	0	4	2	1	7	3.1%
SANTA CRUZ	0	0	0	0	0	0.0%
YAVAPAI	0	6	5	0	11	4.9%
YUMA	0	3	0	0	3	1.3%
STATEWIDE	1	105	97	23	226	100.0%
% OF TOTAL	0.4%	46.5%	42.9%	10.2%	100.0%	

**TABLE 20**  
**NUMBER OF REPORTS ASSIGNED FOR INVESTIGATION BY TYPE OF MALTREATMENT**  
**BY COUNTY THAT RESULTED IN PROPOSED SUBSTANTIATION FOR PERIOD OF**  
**APRIL 1, 2008 THROUGH SEPTEMBER 30, 2008**

COUNTY	EMOTIONAL ABUSE	NEGLECT	PHYSICAL ABUSE	SEXUAL ABUSE	TOTAL	% OF TOTAL
APACHE	0	0	0	0	0	0.0%
COCHISE	0	1	2	0	3	3.7%
COCONINO	0	1	1	0	2	2.4%
GILA	0	0	0	1	1	1.2%
GRAHAM	0	0	0	0	0	0.0%
GREENLEE	0	0	0	0	0	0.0%
LA PAZ	0	0	0	0	0	0.0%
MARICOPA	0	31	22	5	58	70.8%
MOHAVE	0	1	0	0	1	1.2%
NAVAJO	0	1	0	1	2	2.4%
PIMA	0	7	3	1	11	13.4%
PINAL	0	2	2	0	4	4.9%
SANTA CRUZ	0	0	0	0	0	0.0%
YAVAPAI	0	0	0	0	0	0.0%
YUMA	0	0	0	0	0	0.0%
STATEWIDE	0	44	30	8	82	100.0%
% OF TOTAL	0.0%	53.6%	36.6%	9.8%	100.0%	

**CHART 14  
NUMBER OF REPORTS ASSIGNED FOR INVESTIGATION BY RISK LEVEL AND  
REPORTING PERIOD THAT RESULTED IN  
SUBSTANTIATION**



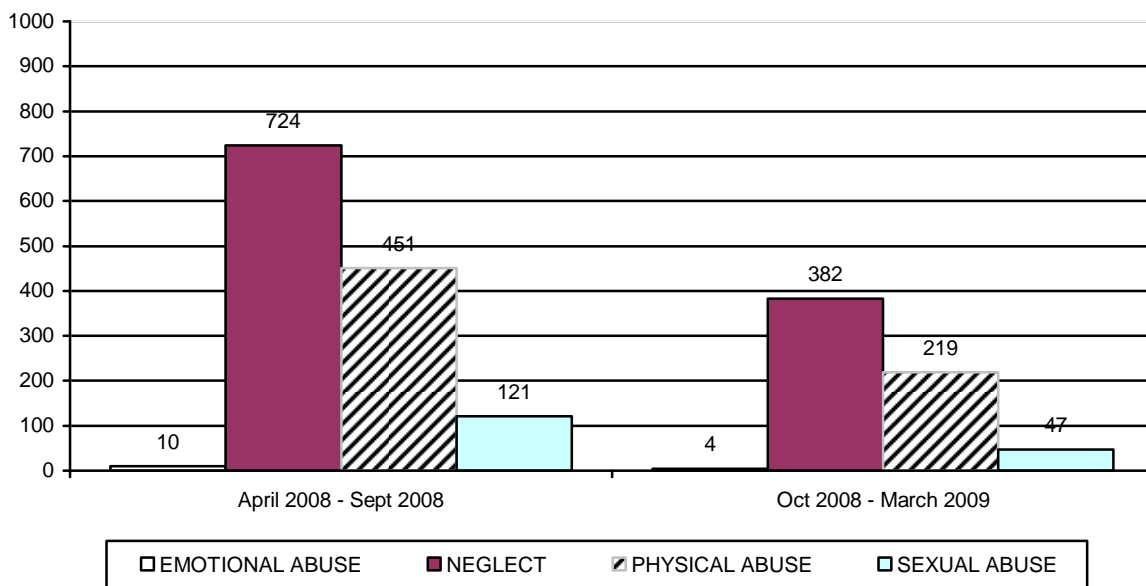
**TABLE 21  
NUMBER OF REPORTS ASSIGNED FOR INVESTIGATION BY RISK LEVEL AND COUNTY  
THAT RESULTED IN SUBSTANTIATION FOR PERIOD OF  
OCTOBER 1, 2008 THROUGH MARCH 31, 2009**

COUNTY	HIGH	MODERATE	LOW	POTENTIAL	TOTAL	% OF TOTAL
APACHE	2	3	0	0	5	0.8%
COCHISE	9	13	7	0	29	4.5%
COCONINO	2	6	2	0	10	1.5%
GILA	0	0	0	0	0	0.0%
GRAHAM	0	1	0	0	1	0.2%
GREENLEE	0	0	0	0	0	0.0%
LA PAZ	3	0	1	0	4	0.6%
MARICOPA	91	79	79	0	249	38.2%
MOHAVE	5	5	2	0	12	1.8%
NAVAJO	7	5	2	0	14	2.2%
PIMA	65	101	96	0	262	40.1%
PINAL	11	14	9	0	34	5.2%
SANTA CRUZ	0	0	0	0	0	0.0%
YAVAPAI	5	14	8	0	27	4.1%
YUMA	2	3	0	0	5	0.8%
STATEWIDE	202	244	206	0	652	100.0%
% OF TOTAL	31.0%	37.4%	31.6%	0.0%	100.0%	

**TABLE 22**  
**NUMBER OF REPORTS ASSIGNED FOR INVESTIGATION BY RISK LEVEL AND COUNTY**  
**THAT RESULTED IN SUBSTANTIATION FOR PERIOD OF**  
**APRIL 1, 2008 THROUGH SEPTEMBER 30, 2008**

COUNTY	HIGH	MODERATE	LOW	POTENTIAL	TOTAL	% OF TOTAL
APACHE	1	3	5	0	9	0.7%
COCHISE	10	9	13	0	32	2.5%
COCONINO	11	9	7	0	27	2.1%
GILA	2	2	0	0	4	0.3%
GRAHAM	0	2	0	0	2	0.2%
GREENLEE	0	1	0	0	1	0.1%
LA PAZ	0	2	0	0	2	0.2%
MARICOPA	193	242	187	0	622	47.4%
MOHAVE	10	14	7	0	31	2.4%
NAVAJO	4	10	6	0	20	1.5%
PIMA	105	160	123	0	388	29.7%
PINAL	32	27	15	0	74	5.7%
SANTA CRUZ	1	1	2	0	4	0.3%
YAVAPAI	18	31	20	0	69	5.3%
YUMA	4	10	7	0	21	1.6%
STATEWIDE	391	523	392	0	1,306	100.0%
% OF TOTAL	29.9%	40.1%	30.0%	0.0%	100.0%	

**CHART 15**  
**NUMBER OF REPORTS ASSIGNED FOR INVESTIGATION BY TYPE OF MALTREATMENT**  
**THAT RESULTED IN SUBSTANTIATION**



**TABLE 23**  
**NUMBER OF REPORTS ASSIGNED FOR INVESTIGATION BY TYPE OF MALTREATMENT**  
**BY COUNTY THAT RESULTED IN SUBSTANTIATION FOR PERIOD OF**  
**OCTOBER 1, 2008 THROUGH MARCH 31, 2009**

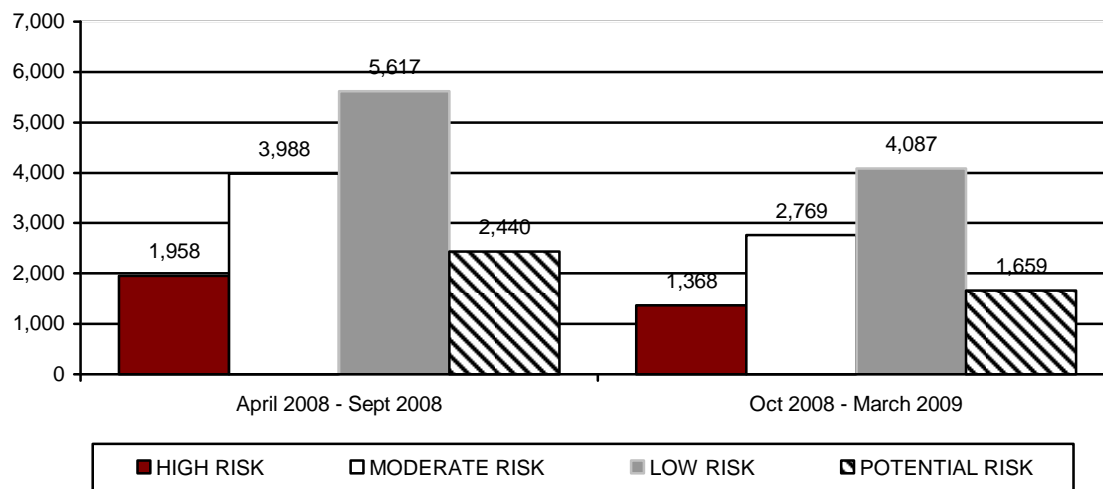
COUNTY	EMOTIONAL ABUSE	NEGLECT	PHYSICAL ABUSE	SEXUAL ABUSE	TOTAL	% OF TOTAL
APACHE	0	4	0	1	5	0.8%
COCHISE	1	18	7	3	29	4.5%
COCONINO	0	5	4	1	10	1.5%
GILA	0	0	0	0	0	0.0%
GRAHAM	0	0	0	1	1	0.2%
GREENLEE	0	0	0	0	0	0.0%
LA PAZ	0	3	1	0	4	0.6%
MARICOPA	0	116	115	18	249	38.2%
MOHAVE	0	4	6	2	12	1.8%
NAVAJO	0	12	2	0	14	2.2%
PIMA	2	176	67	17	262	40.1%
PINAL	1	24	8	1	34	5.2%
SANTA CRUZ	0	0	0	0	0	0.0%
YAVAPAI	0	16	9	2	27	4.1%
YUMA	0	4	0	1	5	0.8%
STATEWIDE	4	382	219	47	652	100.0%
% OF TOTAL	0.6%	58.6%	33.6%	7.2%	100.0%	

**TABLE 24**  
**NUMBER OF REPORTS ASSIGNED FOR INVESTIGATION BY TYPE OF MALTREATMENT**  
**BY COUNTY THAT RESULTED IN SUBSTANTIATION FOR PERIOD OF**  
**APRIL 1, 2008 THROUGH SEPTEMBER 30, 2008**

COUNTY	EMOTIONAL ABUSE	NEGLECT	PHYSICAL ABUSE	SEXUAL ABUSE	TOTAL	% OF TOTAL
APACHE	0	6	3	0	9	0.7%
COCHISE	1	19	11	1	32	2.5%
COCONINO	0	11	9	7	27	2.1%
GILA	0	2	0	2	4	0.3%
GRAHAM	0	1	0	1	2	0.2%
GREENLEE	0	0	0	1	1	0.1%
LA PAZ	0	1	0	1	2	0.2%
MARICOPA	2	304	254	62	622	47.4%
MOHAVE	0	20	5	6	31	2.4%
NAVAJO	0	12	7	1	20	1.5%
PIMA	5	251	107	25	388	29.7%
PINAL	1	42	25	6	74	5.7%
SANTA CRUZ	0	2	2	0	4	0.3%
YAVAPAI	1	46	18	4	69	5.3%
YUMA	0	7	10	4	21	1.6%
STATEWIDE	10	724	451	121	1,306	100.0%
% OF TOTAL	0.8%	55.4%	34.5%	9.3%	100.0%	

The preliminary number of CPS investigations that resulted in an unsubstantiated finding for this reporting period was 9,883. For the prior reporting period, the number of CPS reports that were unsubstantiated was revised from 9,046 to 14,003 to reflect updated information in the CHILDS case management information system. For the prior reporting period, 14.0 percent of unsubstantiated reports were classified as high risk, 28.5 percent as moderate risk, 40.1 percent as potential risk. Just over one percent of these unsubstantiated reports related to emotional abuse, 61.3 percent to neglect, 32.2 percent to physical abuse, and 5.4 percent to sexual abuse.

**CHART 16  
NUMBER OF REPORTS ASSIGNED FOR INVESTIGATION BY RISK LEVEL AND REPORTING PERIOD THAT RESULTED IN UNSUBSTANTIATION**



**TABLE 25  
NUMBER OF REPORTS ASSIGNED FOR INVESTIGATION BY RISK LEVEL AND COUNTY THAT RESULTED IN UNSUBSTANTIATION FOR PERIOD OF OCTOBER 1, 2008 THROUGH MARCH 31, 2009**

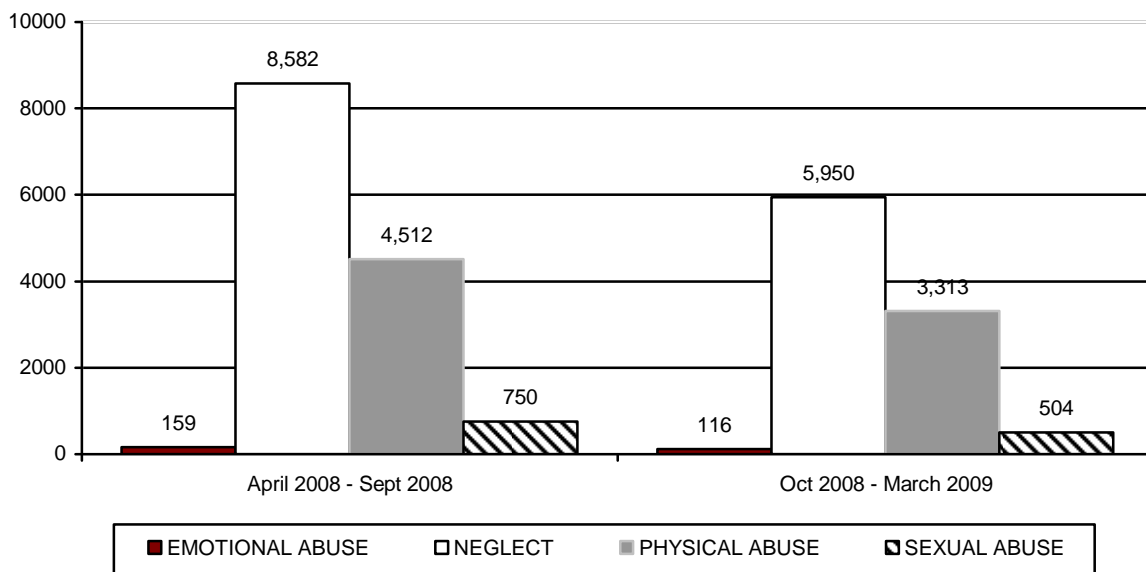
COUNTY	HIGH	MODERATE	LOW	POTENTIAL	TOTAL	% OF TOTAL
APACHE	9	9	20	7	45	0.5%
COCHISE	41	78	173	56	348	3.5%
COCONINO	34	86	127	44	291	2.9%
GILA	2	2	6	0	10	0.1%
GRAHAM	3	9	18	11	41	0.4%
GREENLEE	0	1	3	1	5	0.1%
LA PAZ	3	5	15	6	29	0.3%
MARICOPA	950	1,719	2,489	1,015	6,173	62.5%
MOHAVE	38	122	156	49	365	3.7%
NAVAJO	13	39	65	20	137	1.4%
PIMA	165	430	649	288	1,532	15.5%
PINAL	55	114	127	60	356	3.6%
SANTA CRUZ	3	5	7	6	21	0.2%
YAVAPAI	28	121	197	72	418	4.2%
YUMA	24	29	35	24	112	1.1%
STATEWIDE	1,368	2,769	4,087	1,659	9,883	100.0%
% OF TOTAL	13.8%	28.0%	41.4%	16.8%	100.0%	



**TABLE 26  
NUMBER OF REPORTS ASSIGNED FOR INVESTIGATION BY RISK LEVEL AND COUNTY  
THAT RESULTED IN UNSUBSTANTIATION FOR PERIOD OF  
APRIL 1, 2008 THROUGH SEPTEMBER 30, 2008**

COUNTY	HIGH	MODERATE	LOW	POTENTIAL	TOTAL	% OF TOTAL
APACHE	7	14	26	3	50	0.4%
COCHISE	36	116	143	63	358	2.6%
COCONINO	46	92	100	47	285	2.0%
GILA	8	45	50	15	118	0.8%
GRAHAM	8	26	29	15	78	0.6%
GREENLEE	2	2	4	2	10	0.1%
LA PAZ	7	15	21	14	57	0.4%
MARICOPA	1,346	2,439	3,481	1,525	8,791	62.7%
MOHAVE	61	160	198	60	479	3.4%
NAVAJO	39	59	88	38	224	1.6%
PIMA	225	564	854	414	2,057	14.7%
PINAL	86	201	290	116	693	5.0%
SANTA CRUZ	9	24	26	11	70	0.5%
YAVAPAI	37	147	199	70	453	3.2%
YUMA	41	84	108	47	280	2.0%
STATEWIDE	1,958	3,988	5,617	2,440	14,003	100.0%
% OF TOTAL	14.0%	28.5%	40.1%	17.4%	100.0%	

**CHART 17  
NUMBER OF REPORTS ASSIGNED FOR INVESTIGATION BY TYPE OF MALTREATMENT  
THAT RESULTED IN UNSUBSTANTIATION BY REPORTING PERIOD**



**TABLE 27**  
**NUMBER OF REPORTS ASSIGNED FOR INVESTIGATION BY TYPE OF MALTREATMENT**  
**BY COUNTY THAT RESULTED IN UNSUBSTANTIATION FOR PERIOD OF**  
**OCTOBER 1, 2008 THROUGH MARCH 31, 2009**

COUNTY	EMOTIONAL ABUSE	NEGLECT	PHYSICAL ABUSE	SEXUAL ABUSE	TOTAL	% OF TOTAL
APACHE	1	27	17	0	45	0.5%
COCHISE	7	183	138	20	348	3.5%
COCONINO	5	162	107	17	291	2.9%
GILA	2	8	0	0	10	0.1%
GRAHAM	1	26	12	2	41	0.4%
GREENLEE	0	3	2	0	5	0.1%
LA PAZ	1	19	8	1	29	0.3%
MARICOPA	61	3,753	2,038	321	6,173	62.5%
MOHAVE	1	237	112	15	365	3.7%
NAVAJO	2	86	49	0	137	1.4%
PIMA	20	887	536	89	1,532	15.5%
PINAL	2	220	120	14	356	3.6%
SANTA CRUZ	1	7	10	3	21	0.2%
YAVAPAI	11	251	139	17	418	4.2%
YUMA	1	81	25	5	112	1.1%
STATEWIDE	116	5,950	3,313	504	9,883	100.0%
% OF TOTAL	1.2%	60.2%	33.5%	5.1%	100.0%	

**TABLE 28**  
**NUMBER OF REPORTS ASSIGNED FOR INVESTIGATION BY TYPE OF MALTREATMENT**  
**BY COUNTY THAT RESULTED IN UNSUBSTANTIATION FOR PERIOD OF**  
**APRIL 1, 2008 THROUGH SEPTEMBER 30, 2008**

COUNTY	EMOTIONAL ABUSE	NEGLECT	PHYSICAL ABUSE	SEXUAL ABUSE	TOTAL	% OF TOTAL
APACHE	0	35	13	2	50	0.4%
COCHISE	3	230	104	21	358	2.6%
COCONINO	2	185	80	18	285	2.0%
GILA	1	87	20	10	118	0.8%
GRAHAM	1	52	20	5	78	0.6%
GREENLEE	0	9	0	1	10	0.1%
LA PAZ	0	33	23	1	57	0.4%
MARICOPA	94	5,363	2,880	454	8,791	62.7%
MOHAVE	5	287	164	23	479	3.4%
NAVAJO	3	140	72	9	224	1.6%
PIMA	33	1,218	707	99	2,057	14.7%
PINAL	8	433	206	46	693	5.0%
SANTA CRUZ	0	45	19	6	70	0.5%
YAVAPAI	6	288	124	35	453	3.2%
YUMA	3	177	80	20	280	2.0%
STATEWIDE	159	8,582	4,512	750	14,003	100.0%
% OF TOTAL	1.1%	61.3%	32.2%	5.4%	100.0%	

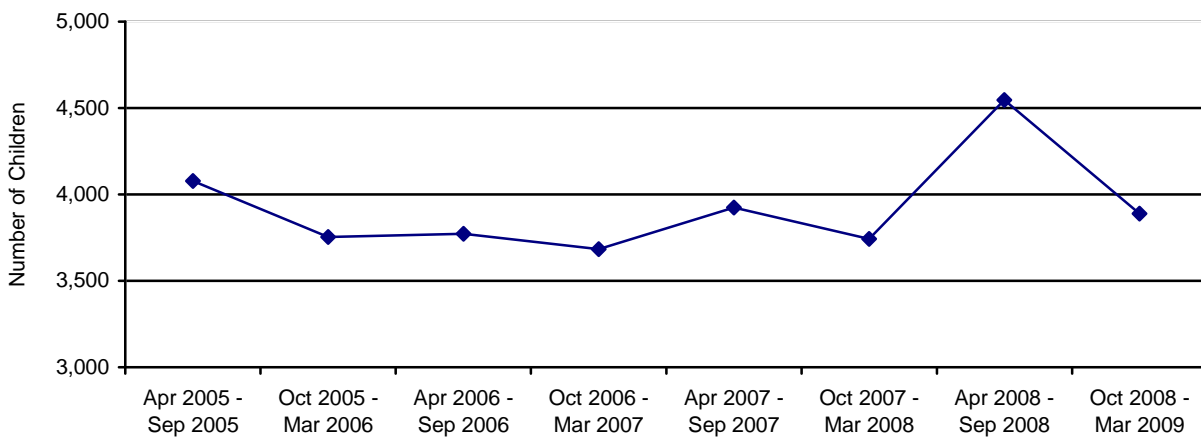
**SAFE HAVEN INFANTS**

There were two newborn infants delivered to Safe Haven providers during the October 2008 – March 2009 reporting period. This compares to one infant being delivered to Safe Haven providers during the April 2008 – September 2008 reporting period.

**CHILDREN ENTERING OUT-OF-HOME CARE**

During this reporting period, 3,889 children entered care as compared to 4,546 children for the April 2008 through September 2008 reporting period. Chart 18 displays children entering out-of-home care by reporting period.

**CHART 18  
TOTAL CHILDREN ENTERING OUT-OF-HOME CARE BY REPORTING PERIOD**



The number of children entering out-of-home placement through voluntary foster care agreements for this reporting period was 319, which represents 8.2 percent of the children entering care this reporting period. Table 29 shows the number of children entering out-of-home care through voluntary placements for the current reporting period by county. Voluntary foster care may be provided when the parents or legal guardians of a child have requested such assistance and have signed a legally binding written agreement, not to exceed 90 days, for the temporary placement of the child in foster care while risk factors are addressed to enable the child to live safely at home. A voluntary foster care agreement may be utilized only when the circumstances that brought the child into foster care are likely to be remedied within the 90 day period of time. A.R.S. §8-806 authorizes the Department to provide voluntary foster care placement for children for a period not to exceed 90 days and no more than twice within 24 consecutive months.

**TABLE 29  
NUMBER OF CHILDREN ENTERING OUT-OF-HOME CARE BY COUNTY WHO ARE  
VOLUNTARY PLACEMENTS FOR CHILDREN UNDER THE AGE OF EIGHTEEN FOR THE  
PERIOD OF OCTOBER 1, 2008 THROUGH MARCH 31, 2009**

COUNTY	NUMBER OF CHILDREN REMOVED	% OF TOTAL REMOVALS	NUMBER OF CHILDREN ENTERING OUT-OF-HOME CARE UNDER THE AGE OF EIGHTEEN WHO ARE VOLUNTARY PLACEMENTS	% OF CHILDREN REMOVED WHO ARE VOLUNTARY PLACEMENTS
APACHE	25	0.6%	10	3.1%
COCHISE	55	1.4%	2	0.6%
COCONINO	48	1.2%	16	5.0%
GILA	37	1.0%	1	0.3%
GRAHAM	24	0.6%	0	0.0%
GREENLEE	0	0.0%	0	0.0%
LA PAZ	6	0.2%	1	0.3%
MARICOPA	2,252	58.0%	162	50.9%
MOHAVE	83	2.1%	23	7.2%
NAVAJO	45	1.2%	2	0.6%
PIMA	984	25.3%	70	21.9%
PINAL	161	4.1%	2	0.6%
SANTA CRUZ	8	0.2%	0	0.0%
YAVAPAI	106	2.7%	26	8.2%
YUMA	55	1.4%	4	1.3%
STATEWIDE	3,889	100.0%	319	100.0%

**TABLE 30  
NUMBER OF CHILDREN ENTERING OUT-OF-HOME CARE BY COUNTY WHO ARE  
VOLUNTARY PLACEMENTS FOR CHILDREN UNDER THE AGE OF EIGHTEEN FOR THE  
PERIOD OF APRIL 1, 2008 THROUGH SEPTEMBER 30, 2008**

COUNTY	NUMBER OF CHILDREN REMOVED	% OF TOTAL REMOVALS	NUMBER OF CHILDREN ENTERING OUT-OF-HOME CARE UNDER THE AGE OF EIGHTEEN WHO ARE VOLUNTARY PLACEMENTS	% OF CHILDREN REMOVED WHO ARE VOLUNTARY PLACEMENTS
APACHE	12	0.3%	3	25.0%
COCHISE	66	1.5%	5	7.6%
COCONINO	51	1.1%	12	23.5%
GILA	21	0.5%	0	0.0%
GRAHAM	22	0.5%	3	13.6%
GREENLEE	0	0.0%	0	0.0%
LA PAZ	4	0.1%	0	0.0%
MARICOPA	2,717	59.7%	218	8.0%
MOHAVE	96	2.1%	30	31.3%
NAVAJO	48	1.1%	8	16.7%
PIMA	1,155	25.4%	67	5.8%
PINAL	202	4.4%	2	1.0%
SANTA CRUZ	17	0.4%	2	11.8%
YAVAPAI	102	2.2%	10	9.8%
YUMA	33	0.7%	10	30.3%
STATEWIDE	4,546	100.0%	370	8.1%

The Department recognizes that the unwarranted re-entry into foster care is something to be avoided and continues to take steps to ensure that these re-entries are in the best interests of the child and family. In 2005, the Department began collaborating with the Chapin Hall Center for Children on a measure to aid the Department in identifying key factors in re-entry into foster care. This will enable the Department to utilize cohort data and help to identify if changes are needed in policy or practices.

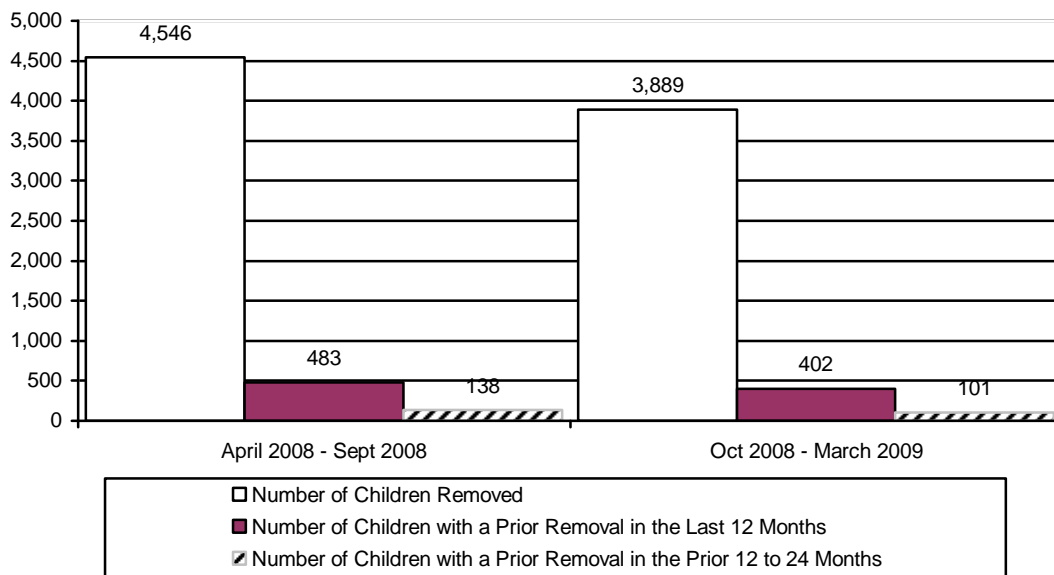
**TABLE 31  
NUMBER OF CHILDREN ENTERING OUT-OF-HOME CARE BY COUNTY FOR THE  
PERIOD OF OCTOBER 1, 2008 THROUGH MARCH 31, 2009**

COUNTY	NUMBER OF CHILDREN REMOVED	% OF TOTAL REMOVALS	NUMBER OF CHILDREN WITH A PRIOR REMOVAL IN THE LAST 12 MONTHS	% OF CHILDREN WITH A PRIOR REMOVAL IN THE LAST 12 MONTHS	NUMBER OF CHILDREN WITH A REMOVAL IN THE PRIOR 12 TO 24 MONTHS	% OF CHILDREN WITH A PRIOR REMOVAL IN THE PRIOR 12 TO 24 MONTHS
APACHE	25	0.6%	2	8.0%	2	8.0%
COCHISE	55	1.4%	8	14.6%	0	0.0%
COCONINO	48	1.2%	6	12.5%	1	2.1%
GILA	37	1.0%	4	10.8%	0	0.0%
GRAHAM	24	0.6%	4	16.7%	1	4.2%
GREENLEE	0	0.0%	0	0.0%	0	0.0%
LA PAZ	6	0.2%	0	0.0%	0	0.0%
MARICOPA	2,252	58.0%	229	10.2%	53	2.4%
MOHAVE	83	2.1%	16	19.3%	1	1.2%
NAVAJO	45	1.2%	4	8.9%	1	2.2%
PIMA	984	25.3%	101	10.3%	25	2.5%
PINAL	161	4.1%	12	7.5%	10	6.2%
SANTA CRUZ	8	0.2%	0	0.0%	0	0.0%
YAVAPAI	106	2.7%	9	8.5%	1	0.9%
YUMA	55	1.4%	7	12.7%	6	10.9%
STATEWIDE	3,889	100.0%	402	10.3%	101	2.6%

**TABLE 32**  
**NUMBER OF CHILDREN ENTERING OUT-OF-HOME CARE BY COUNTY FOR THE**  
**PERIOD OF APRIL 1, 2008 THROUGH SEPTEMBER 30, 2008**

COUNTY	NUMBER OF CHILDREN REMOVED	% OF TOTAL REMOVALS	NUMBER OF CHILDREN WITH A PRIOR REMOVAL IN THE LAST 12 MONTHS	% OF CHILDREN WITH A PRIOR REMOVAL IN THE LAST 12 MONTHS	NUMBER OF CHILDREN WITH A REMOVAL IN THE PRIOR 12 TO 24 MONTHS	% OF CHILDREN WITH A PRIOR REMOVAL IN THE PRIOR 12 TO 24 MONTHS
APACHE	12	0.3%	3	25.0%	0	0.0%
COCHISE	66	1.5%	2	3.0%	2	3.0%
COCONINO	51	1.1%	3	5.9%	2	3.9%
GILA	21	0.5%	1	4.8%	0	0.0%
GRAHAM	22	0.5%	0	0.0%	2	9.1%
GREENLEE	0	0.0%	0	0.0%	0	0.0%
LA PAZ	4	0.1%	0	0.0%	1	25.0%
MARICOPA	2,717	59.7%	283	10.4%	86	3.2%
MOHAVE	96	2.1%	11	11.5%	0	0.0%
NAVAJO	48	1.1%	0	0.0%	7	14.6%
PIMA	1,155	25.4%	134	11.6%	25	2.2%
PINAL	202	4.4%	33	16.3%	5	2.5%
SANTA CRUZ	17	0.4%	1	5.9%	0	0.0%
YAVAPAI	102	2.2%	10	9.8%	7	6.9%
YUMA	33	0.7%	2	6.1%	1	3.0%
STATEWIDE	4,546	100.0%	483	10.6%	138	3.0%

**CHART 19**  
**NUMBER OF CHILDREN ENTERING OUT-OF-HOME CARE BY REPORTING PERIOD**



**CHILDREN IN OUT-OF-HOME CARE**

On March 31, 2009, there were 10,404 children in out-of-home care as compared to 10,303 children on September 30, 2008, an increase of 101 children. During this reporting period, 8,345 children or 80.2 percent were placed in family settings either with relatives or in foster homes. This compares to 8,050 or 78.1 percent of the children in the prior reporting period.

**CHART 20  
NUMBER OF CHILDREN IN OUT-OF-HOME CARE ON THE LAST DAY OF THE REPORTING PERIOD BY REPORTING PERIOD**

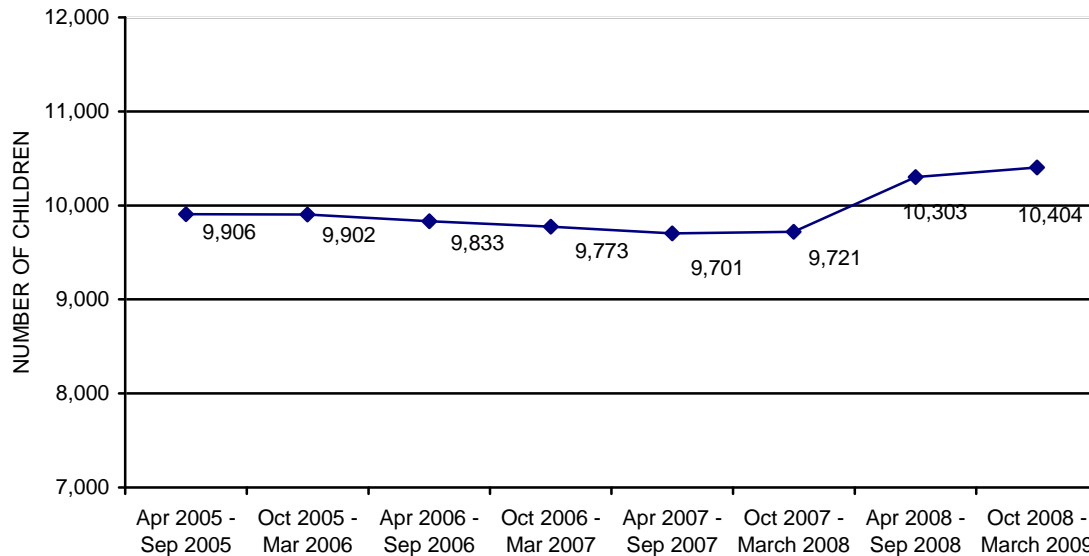
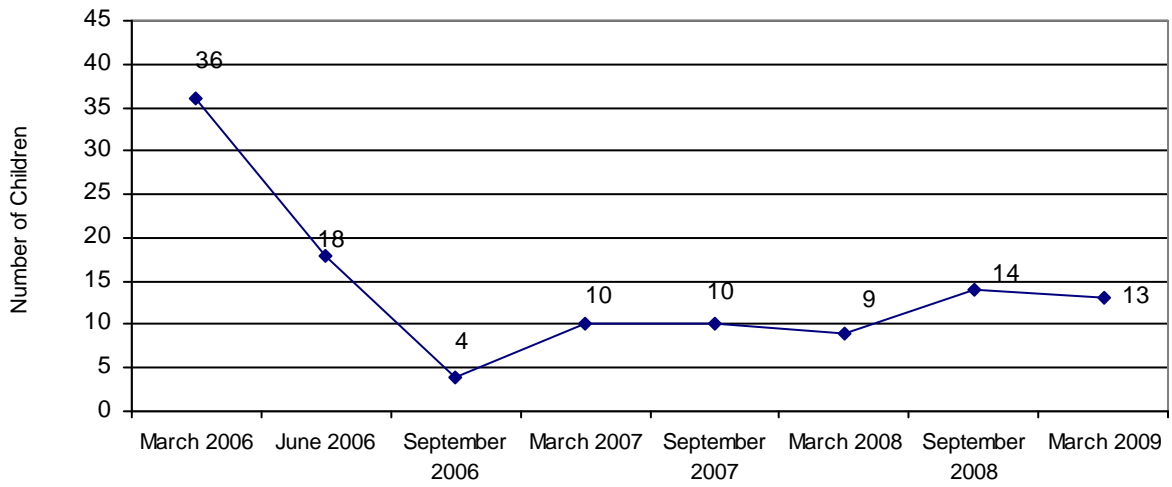


Chart 21 displays the decrease in the number of young children ages 0-6 placed in group homes. Comparing March 2006 to March 2009, the number of young children in group homes decreased by 23 children or 63.9 percent.

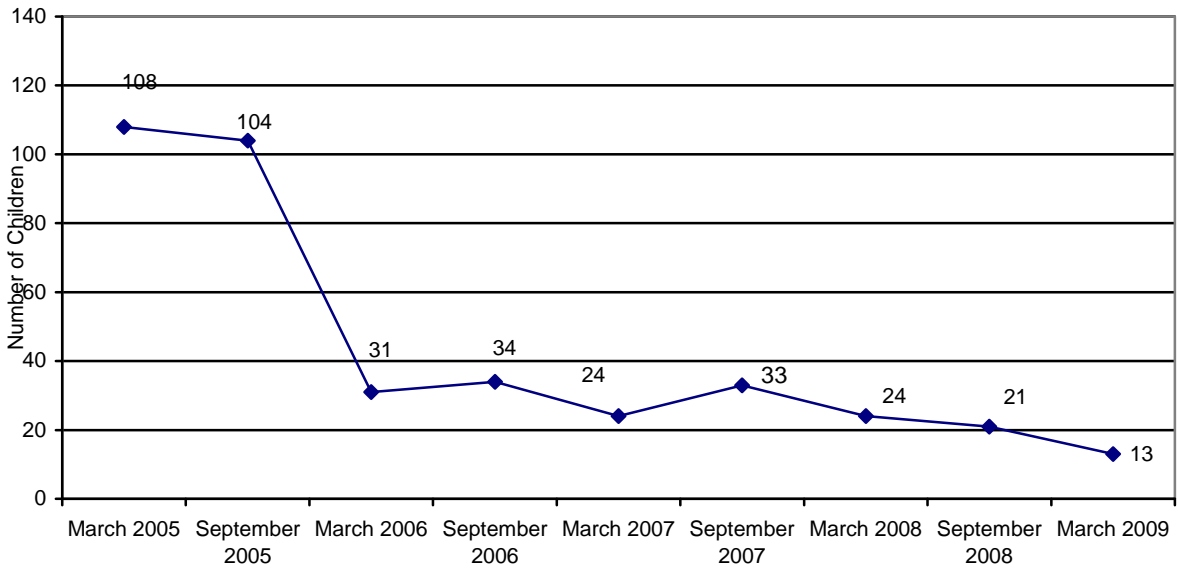
Chart 22 displays the decrease in the number of young children ages 0-3 placed in shelter care. Comparing March 2005 to March 2009, the number of young children in shelters decreased by 95 children or 88.0 percent. Chart 22 shows that the average length of time in shelter care has increased slightly; comparing March 2006 to March 2009, the average length of stay in shelter increased from 103.4 to 115.7 days, an increase of 12.3 days or 11.9 percent.



**CHART 21**  
**THE NUMBER OF CHILDREN IN GROUP HOMES AGES 0 TO 6<sup>3</sup>**

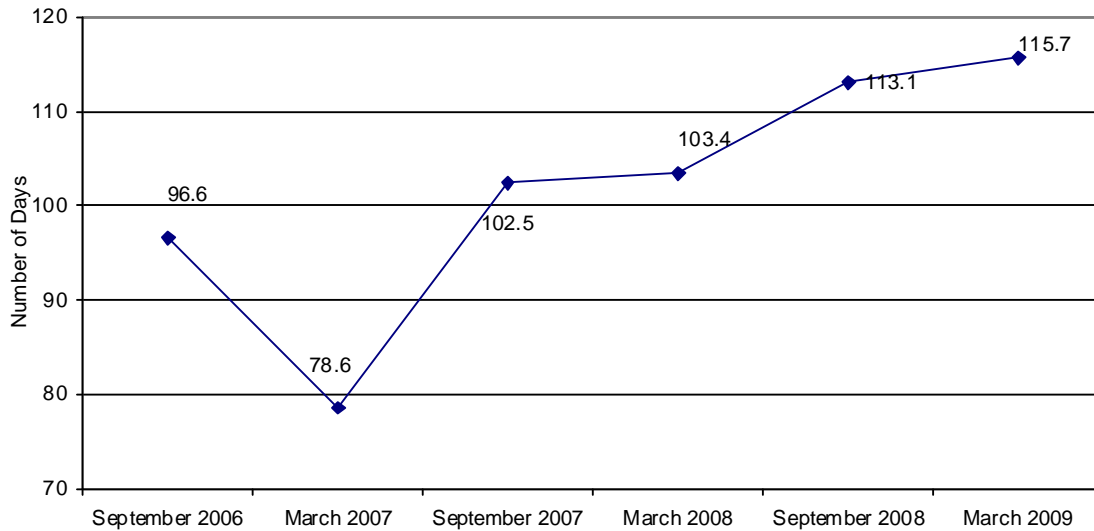


**CHART 22**  
**THE NUMBER OF CHILDREN IN SHELTER CARE AGES 0 TO 3**



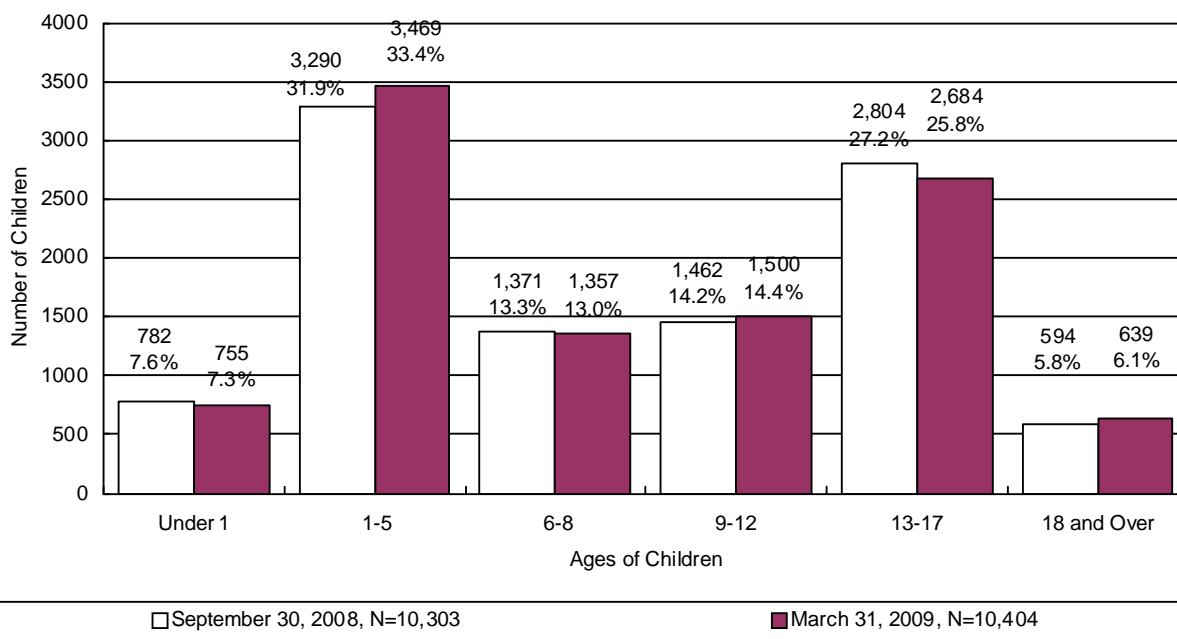
<sup>3</sup> Excludes infants placed with their mothers and children placed in foster home group models.

**CHART 23**  
**THE AVERAGE LENGTH OF STAY IN A SHELTER PLACEMENT FOR CHILDREN AGES 0 TO 3 IN A SHELTER PLACEMENT ON THE LAST DAY OF THE REPORTING PERIOD**

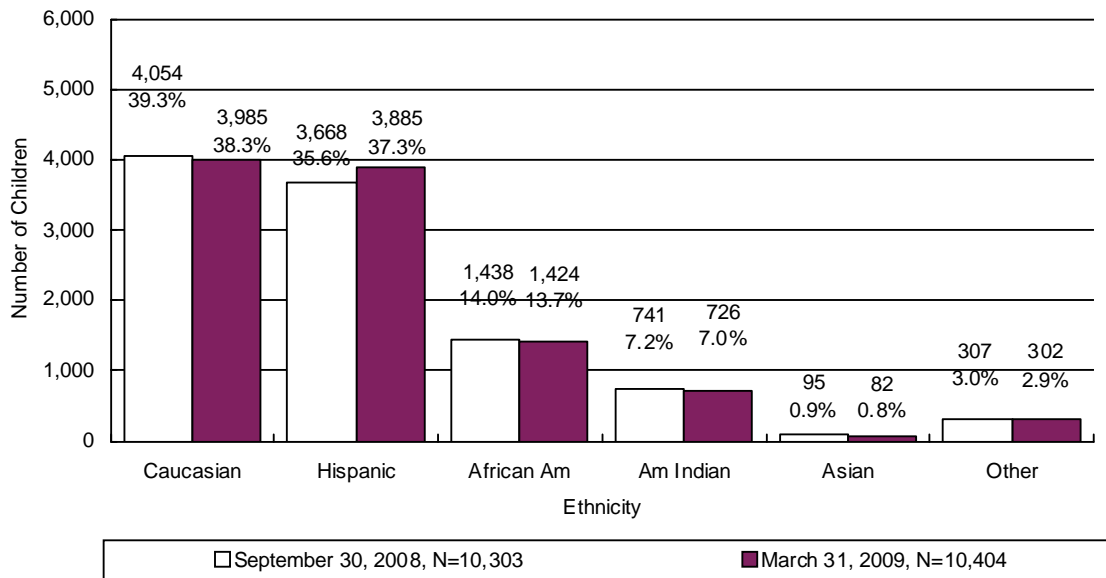


The majority of children in out-of-home care fall within the 1-5 age range (33.4 percent) and the 13-17 age range (25.8 percent). The majority of children in out-of-home care are either Caucasian (38.3 percent) or Hispanic (37.3 percent), followed by African American at 13.7 percent.

**CHART 24**  
**THE NUMBER OF CHILDREN IN OUT-OF-HOME CARE BY AGE**

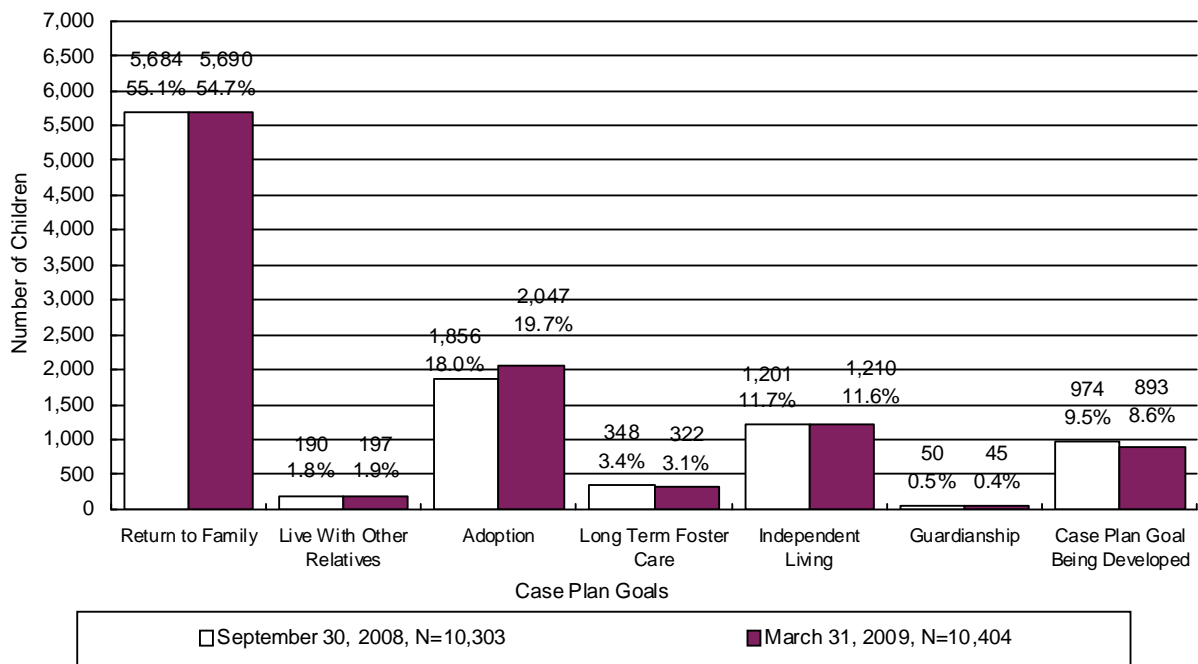


**CHART 25**  
**THE NUMBER OF CHILDREN IN OUT-OF-HOME CARE BY ETHNICITY**

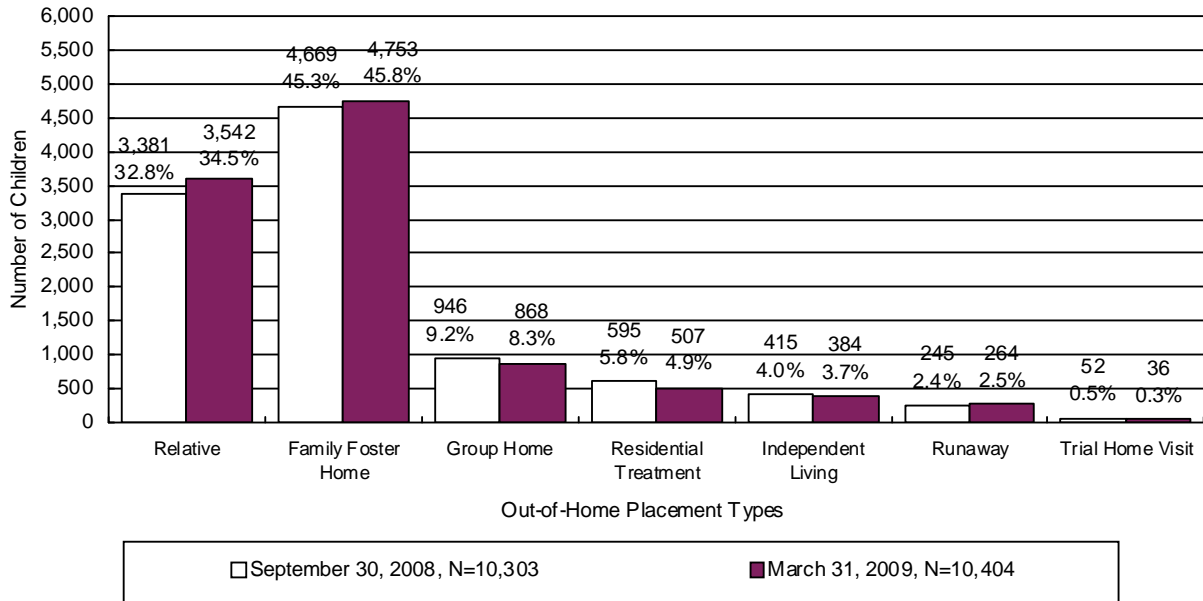


For 54.7 percent of the children in out-of-home care, family reunification remains the primary case plan goal. This is followed by: adoption, 19.7 percent; independent living, 11.6 percent; long-term foster care, 3.1 percent; live with other relative, 1.9 percent; and, guardianship at 0.4 percent. For the remaining 8.6 percent of the children, the case plan goal is in the process of development.

**CHART 26**  
**THE NUMBER OF CHILDREN IN OUT-OF-HOME CARE BY CASE PLAN GOAL**



**CHART 27**  
**THE NUMBER OF CHILDREN IN OUT-OF-HOME CARE BY PLACEMENT TYPE**



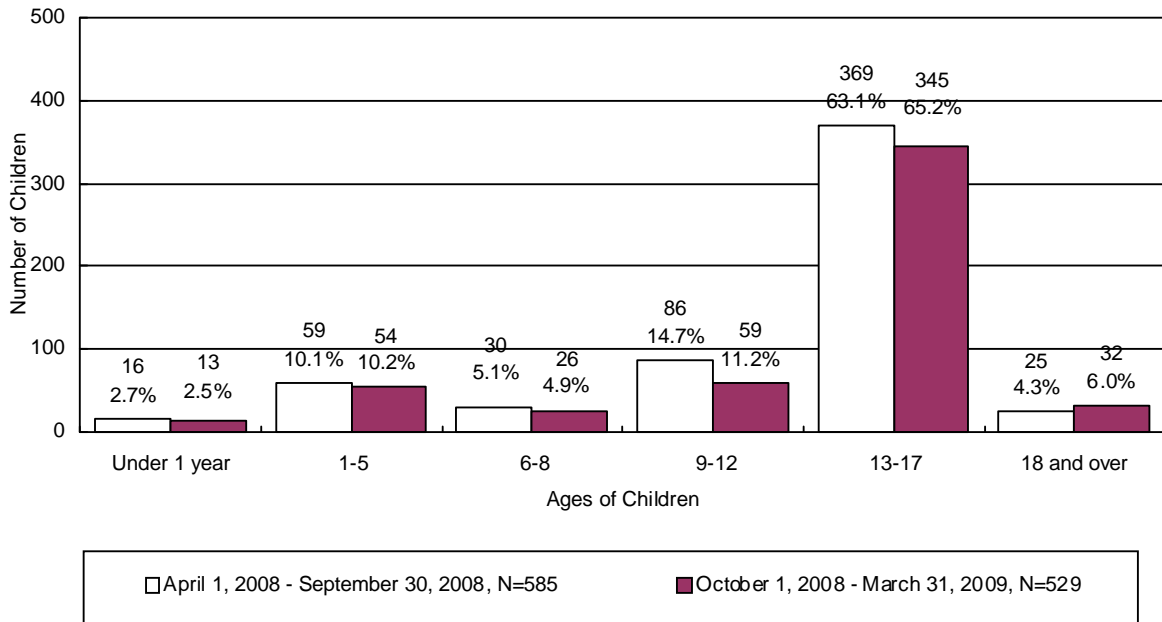
**TABLE 33  
THE NUMBER OF CHILDREN IN OUT-OF-HOME CARE BY PLACEMENT TYPE AND AGE**

	RELATIVE	FAMILY FOSTER	GROUP HOME	RESIDENTIAL TREATMENT <sup>4</sup>	INDEPENDENT LIVING	RUNAWAY	TRIAL HOME VISIT	TOTAL	% OF TOTAL
<b>UNDER 1</b>	264	475	6	8	0	0	2	755	7.3%
<b>1</b>	378	511	1	6	0	0	5	901	8.6%
<b>2</b>	373	426	5	4	0	0	2	810	7.8%
<b>3</b>	313	338	3	1	0	0	6	661	6.4%
<b>4</b>	286	290	0	2	0	0	2	580	5.6%
<b>5</b>	262	246	4	3	0	0	2	517	5.0%
<b>6</b>	213	251	8	4	0	0	1	477	4.6%
<b>7</b>	205	244	10	5	0	0	3	467	4.5%
<b>8</b>	173	230	9	1	0	0	0	413	4.0%
<b>9</b>	158	214	17	4	0	0	1	394	3.8%
<b>10</b>	176	193	24	5	0	0	1	399	3.8%
<b>11</b>	121	191	24	7	0	0	2	345	3.3%
<b>12</b>	124	183	44	11	0	0	0	362	3.5%
<b>13</b>	110	166	53	40	0	3	1	373	3.6%
<b>14</b>	106	155	95	59	0	21	1	437	4.2%
<b>15</b>	104	174	129	75	0	31	1	514	4.9%
<b>16</b>	112	204	167	103	0	72	1	659	6.3%
<b>17</b>	80	204	198	104	8	105	2	701	6.7%
<b>18 AND OLDER</b>	34	58	71	65	376	32	3	639	6.1%
<b>TOTAL</b>	3,592	4,753	868	507	384	264	36	10,404	100.0%
<b>% OF TOTAL</b>	34.5%	45.8%	8.3%	4.9%	3.7%	2.5%	0.3%	100.0%	

<sup>4</sup> This category includes shelter, detention, and hospital placement types.

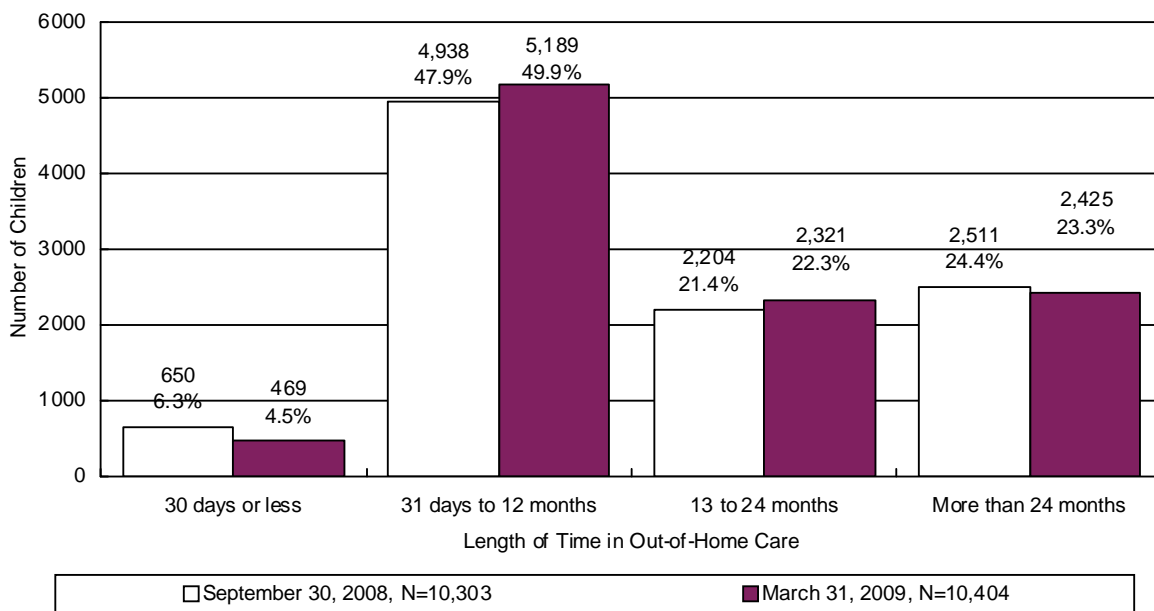
During the reporting period 529 children remained in a shelter or receiving home for more than 21 consecutive days. Chart 28 displays children in shelter greater than 21 days for the period of October 1, 2008 through March 31, 2009 and shows that 462 or 87.3 percent of the children were six years of age or older. In addition, 13 or 2.5 percent of the children were under one year old.

**CHART 28**  
**NUMBER AND PERCENTAGE OF CHILDREN IN SHELTER OR RECEIVING HOMES FOR MORE THAN 21 CONSECUTIVE DAYS BY AGE OF CHILD<sup>5</sup>**



<sup>5</sup> The chart displays children who spent more than 21 days in shelter during the period. This number differs from the other out-of-home charts as they display children in out-of-home care on the last day of the reporting period.

**CHART 29**  
**THE NUMBER OF CHILDREN IN OUT-OF-HOME CARE BY LENGTH OF TIME IN CARE**



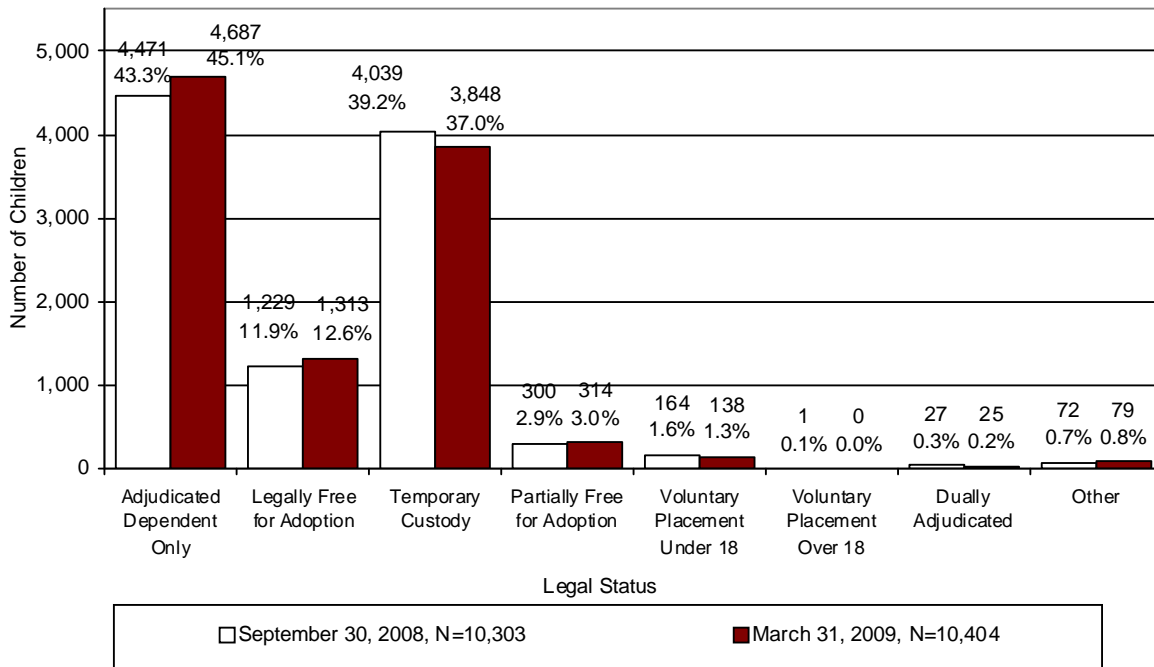
For the children in out-of-home care on March 31, 2009 the average number of placements was 2.9, the median number of placements was 2.0, and the range for the number of placements was 1 to 46 placements during their current removal episode.

**TABLE 34**  
**PLACEMENT INFORMATION FOR CHILDREN IN OUT-OF-HOME CARE ON MARCH 31, 2009**

	Placements
<b>Average</b>	2.9
<b>Median</b>	2.0
<b>Range Minimum</b>	1
<b>Range Maximum</b>	46 <sup>6</sup>

<sup>6</sup> Some children are so damaged by the severity of the abuse they have suffered that they become unable to form meaningful relationships or to respond to services. These children tend to go through multiple placements with numerous individuals and agencies.

**CHART 30  
CHILDREN IN OUT-OF-HOME CARE BY LEGAL STATUS**

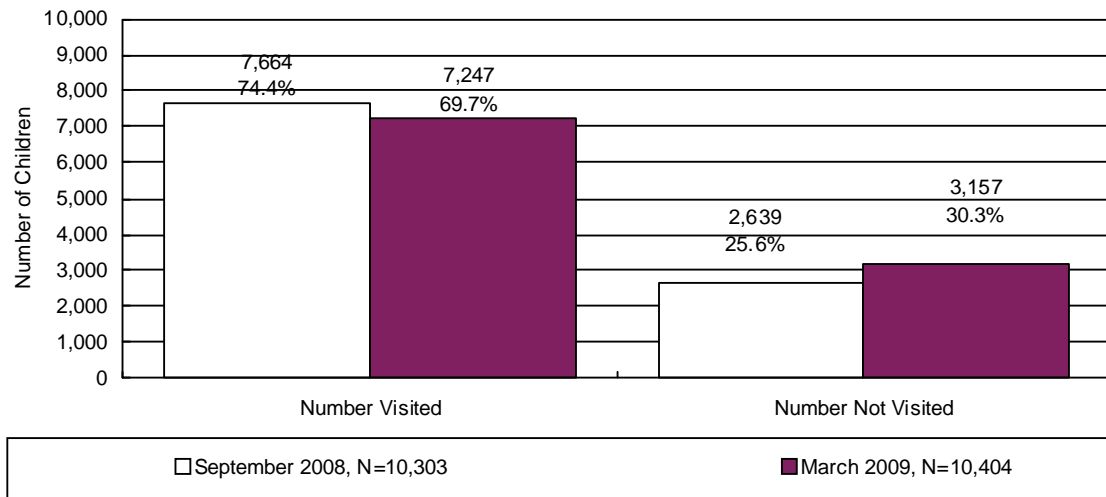


At the end of the reporting period there were 10,404 children in out-of-home care who required visitation. Of these children, visitation was accurately documented in the automated system for 7,247 children. As displayed in Chart 31, during this reporting period, the percent of children receiving required visits by their CPS specialists decreased by 4.7 percent to 69.7 percent.

The required child visitation is performed monthly by DES case managers, contracted case managers, and/or other professionals as approved by a supervisor or as established by policy. The Department has verified that more children received the required visitation than is indicated in Chart 31. This information is clearly documented in the automated case notes. However, the Department is unable to compile and tabulate data based solely upon case note text. The Department continues to issue instructions to all direct service staff regarding the system requirements for capturing all visitations. A child was deemed to have received the required visitation if the child received the visitation during the last month of the reporting period.

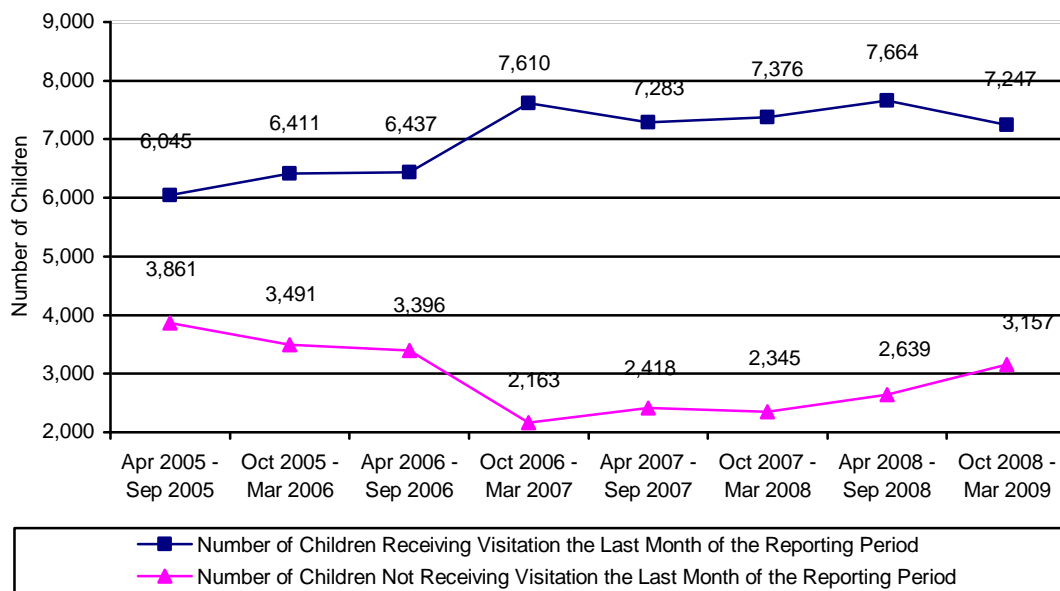


**CHART 31  
THE NUMBER AND PERCENTAGE OF CHILDREN WHO RECEIVED THE REQUIRED VISITATION**



According to Administration for Children, Youth and Families policy, case managers shall have face-to-face contact with all parents at least once a month, including any alleged parents and parents residing outside of the child’s home where the case plan goal is family reunification or remain with family. During the reporting period, there were 1,752 parents who had a child with the case plan goal of return home. Of those parents requiring visitation, 939 or 53.6 percent received the required visitation. The 53.6 percent visitation rate does not reflect attempted visitation where contact with the parent(s) did not take place.

**CHART 32  
NUMBER OF CHILDREN RECEIVING AND NOT RECEIVING VISITATION BY REPORTING PERIOD**



**FOSTER HOMES**

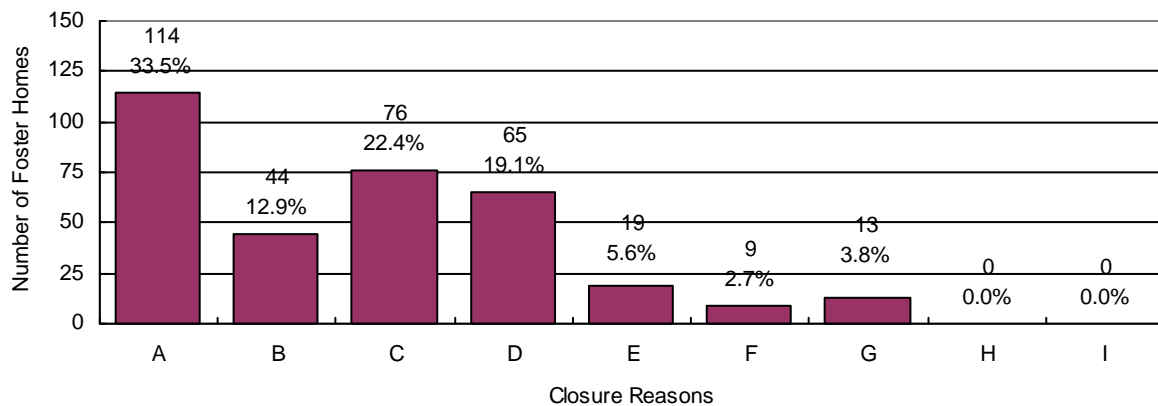
As of March 31, 2009, there were 3,923<sup>7</sup> licensed foster homes with 8,293 spaces available for Administration for Children, Youth and Families placements. Licensed foster homes include family foster homes, professional family foster homes, respite foster homes, receiving foster homes, and developmentally disabled homes with DCYF children placed in them.

Foster home licenses specify the age range, gender and maximum number of children that can be placed in a home. Foster parents, in consultation with the licensing worker, decide the type of physical, behavioral, and psychological needs of children they can effectively parent based upon their own skill level, experiences, and desires.

As of March 31, 2009, there were 2,941 unused spaces within these foster homes. Of the unused spaces, a match between the available spaces and children’s needs was not possible.

During the reporting period, 648 new homes were licensed to provide foster care and 340 homes left the system. This compares to 162 new homes being licensed and 139 homes leaving the system for the period covering April 2008 through September 2008. The chart below gives the reasons for foster home closures for the period of October 1, 2008 through March 31, 2009.

**CHART 33  
REASON FOR FOSTER HOME CLOSURE FOR THE PERIOD OF  
APRIL 1, 2008 THROUGH SEPTEMBER 30, 2008**



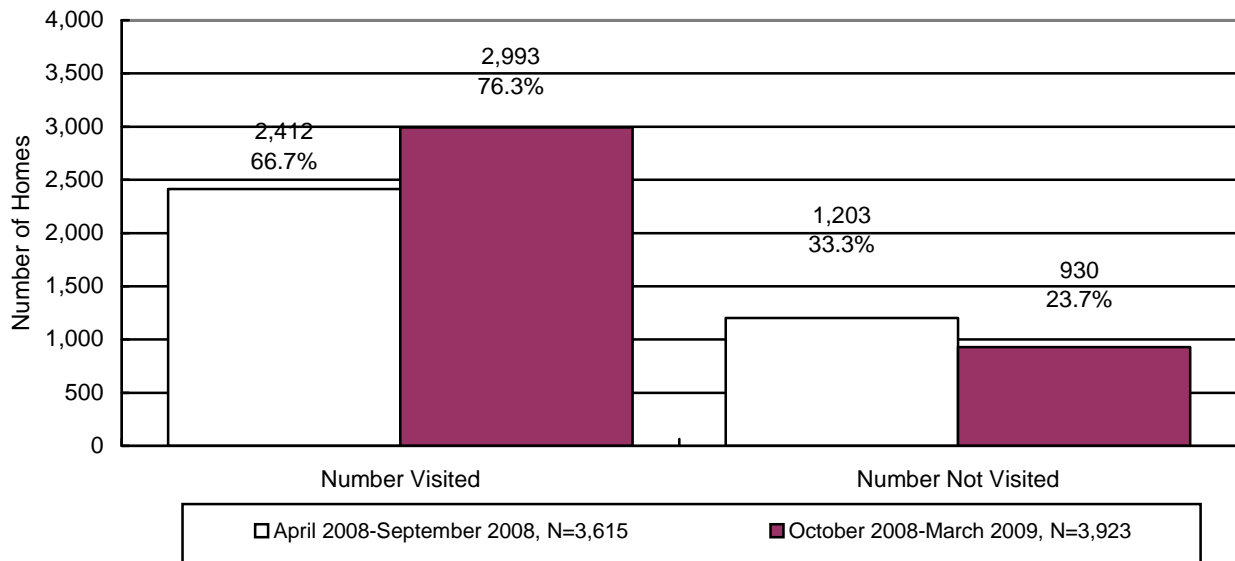
N=340

- A = Personal or Family Issues or Problems**
- B = Other or Foster Parent Did Not State Reason**
- C = Non-Compliance with Licensing Requirements**
- D = Adoption of Foster Child**
- E = Family Relocation**
- F = Child Left Care**
- G = Philosophical Disagreement**
- H = Behavior of Child**
- I = Transfer to Division of Developmental Disabilities**

<sup>7</sup> The number of homes cited in this report differs from the official number cited by the Office of Licensing, Certification & Regulation (OLCR) due to the fact that the Division for Children, Youth & Families utilize foster homes that are licensed for developmental disabilities, licensed by the tribes, etc.

During the reporting period, there were 3,923 foster homes that required visitation. Of the 3,923 foster homes requiring visitation, 2,993 foster homes received their required visitation. This compares to 2,412 or 66.7% percent of the foster homes that received the required visitation for the period April 2008 through September 2008. The Department believes that more foster homes received the required visitation than is indicated in the chart below. The underreporting of foster home visitation is attributable to the lack of automation being used in reporting the foster home visitation process. The Department recognizes this as a problem and is working to correct this issue.

**CHART 34  
THE NUMBER AND PERCENTAGE OF FOSTER HOMES WHO RECEIVED THE  
REQUIRED VISITATION\***



\*Required visitations to foster homes, for license monitoring purposes, are performed by licensing case managers.

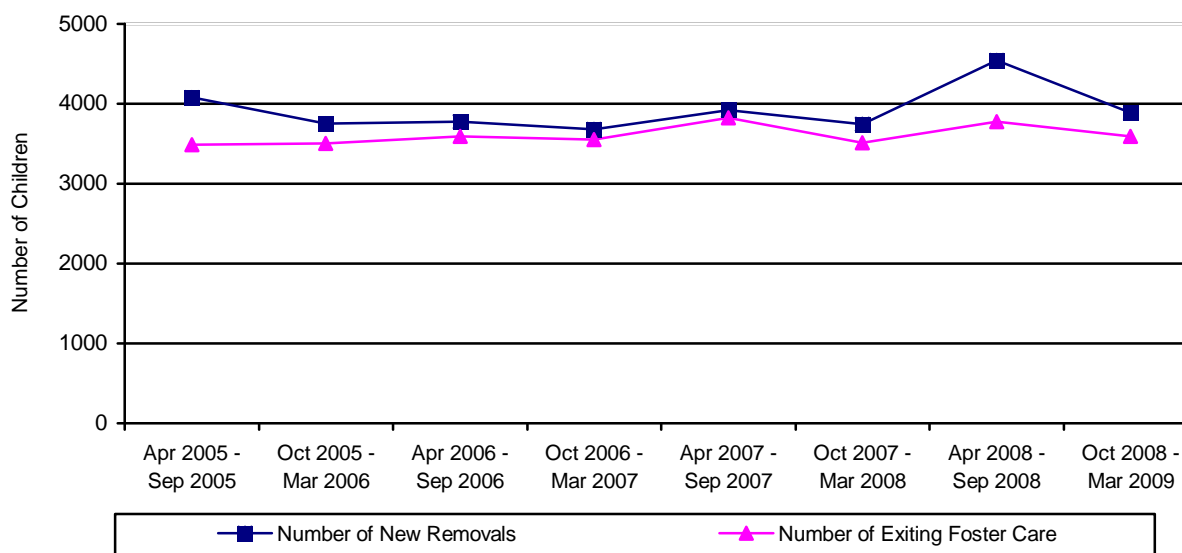
**CHILDREN EXITING OUT-OF HOME CARE**

During the reporting period, 3,590 children left the custody of the Department. This compares to 3,773 children exiting care during the prior reporting period. The comparison between the two reporting periods shows that 4.9 percent fewer children left care this reporting period for a decrease of 183 children exiting care.

**TABLE 35  
CHILDREN EXITING OUT-OF-HOME CARE BY PERIOD**

REPORTING PERIOD	NUMBER OF CHILDREN DISCHARGED	% CHANGE OVER PRIOR PERIOD
APRIL 2005 – SEPTEMBER 2005	3,488	+28.0%
OCTOBER 2005 – MARCH 2006	3,506	+0.5%
APRIL 2006 – SEPTEMBER 2006	3,595	+2.5%
OCTOBER 2006 – MARCH 2007	3,553	-1.2%
APRIL 2007 – SEPTEMBER 2007	3,824	+7.6%
OCTOBER 2007 – MARCH 2008	3,512	-8.2%
APRIL 2008 – SEPTEMBER 2008	3,773	+7.4%
OCTOBER 2008 – MARCH 2009	3,590	-4.9%

**CHART 35  
CHILDREN ENTERING AND EXITING OUT-OF-HOME CARE BY REPORTING PERIOD**



The following nine tables depict the children who exited out-of-home care by the reason for leaving care. The tables display the following information: reasons the child left custody, their age, their ethnicity, the number of placements each child had, and the length of time in out-of-home care.

**TABLE 36**  
**TOTAL NUMBER OF CHILDREN LEAVING DES CUSTODY FOR THE END OF THE**  
**REPORTING PERIOD ENDING ON MARCH 31, 2009**

<b>By Age</b>	<b>Number</b>	<b>Percentage</b>
Under 1	237	6.6%
Ages 1 – 5	1,195	33.3%
Ages 6 – 8	502	14.0%
Ages 9 – 12	490	13.6%
Ages 13 – 17	821	22.9%
18 and Over	345	9.6%
<b>Total</b>	<b>3,590</b>	<b>100.0%</b>
<b>Ethnicity</b>	<b>Number</b>	<b>Percentage</b>
Caucasian	1,434	39.9%
Hispanic	1,219	34.0%
African American	507	14.1%
American Indian	264	7.4%
Asian	48	1.3%
Other	118	3.3%
<b>Total</b>	<b>3,590</b>	<b>100.0%</b>
<b>By Number of Placements</b>	<b>Number</b>	<b>Percentage</b>
One	1,878	52.4%
Two	757	21.1%
Three	346	9.6%
Four	188	5.2%
Five	118	3.3%
More than Five	303	8.4%
<b>Total</b>	<b>3,590</b>	<b>100.0%</b>
<b>By Length of Time in Care</b>	<b>Number</b>	<b>Percentage</b>
Less than 30 Days	955	26.5%
31 Days to 12 Months	1,097	30.6%
13 to 24 Months	695	19.4%
More than 24 Months	843	23.5%
<b>Total</b>	<b>3,590</b>	<b>100.0%</b>

	<b>Average</b>	<b>Median</b>
<b>By Age</b>	9.0	8.1
<b>By Number of Placements</b>	2.5	1.0
<b>By Months of Time in Care</b>	15.8	9.7

**TABLE 37  
NUMBER AND PERCENTAGE OF CHILDREN LEAVING DES CUSTODY  
FOR REASON OF "REUNIFICATION WITH PARENTS OR PRIMARY CARETAKER" FOR  
THE REPORTING PERIOD ENDING MARCH 31, 2009**

<b>By Age</b>	<b>Number</b>	<b>Percentage</b>
Under 1	207	10.6%
Ages 1 - 5	631	32.2%
Ages 6 - 8	283	14.5%
Ages 9 - 12	283	14.5%
Ages 13 - 17	544	27.8%
18 and Over	7	0.4%
<b>Total</b>	<b>1,955</b>	<b>100.0%</b>
<b>Ethnicity</b>	<b>Number</b>	<b>Percentage</b>
Caucasian	741	37.9%
Hispanic	680	34.8%
African American	295	15.1%
American Indian	133	6.8%
Asian	34	1.7%
Other	72	3.7%
<b>Total</b>	<b>1,955</b>	<b>100.0%</b>
<b>By Number of Placements</b>	<b>Number</b>	<b>Percentage</b>
One	1,344	68.8%
Two	370	18.9%
Three	129	6.6%
Four	48	2.5%
Five	32	1.6%
More than Five	32	1.6%
<b>Total</b>	<b>1,955</b>	<b>100.0%</b>
<b>By Length of Time in Care</b>	<b>Number</b>	<b>Percentage</b>
Less than 30 Days	820	42.0%
31 Days to 12 Months	805	41.2%
13 to 24 Months	245	12.5%
More than 24 Months	85	4.3%
<b>Total</b>	<b>1,955</b>	<b>100.0%</b>

	<b>Average</b>	<b>Median</b>
<b>By Age</b>	8.2	7.3
<b>By Number of Placements</b>	1.6	1.0
<b>By Months of Time in Care</b>	6.0	2.3

**TABLE 38  
NUMBER AND PERCENTAGE OF CHILDREN LEAVING DES CUSTODY  
FOR REASON OF "LIVING WITH OTHER RELATIVES" FOR THE REPORTING PERIOD  
ENDING MARCH 31, 2009**

<b>By Age</b>	<b>Number</b>	<b>Percentage</b>
Under 1	0	0.0%
Ages 1 - 5	13	39.4%
Ages 6 - 8	7	21.2%
Ages 9 - 12	7	21.2%
Ages 13 - 17	6	18.2%
18 and Over	0	0.0%
<b>Total</b>	<b>33</b>	<b>100.0%</b>
<b>Ethnicity</b>	<b>Number</b>	<b>Percentage</b>
Caucasian	12	36.3%
Hispanic	11	33.3%
African American	2	6.1%
American Indian	6	18.2%
Asian	0	0.0%
Other	2	6.1%
<b>Total</b>	<b>33</b>	<b>100.0%</b>
<b>By Number of Placements</b>	<b>Number</b>	<b>Percentage</b>
One	29	87.9%
Two	2	6.1%
Three	1	3.0%
Four	1	3.0%
Five	0	0.0%
More than Five	0	0.0%
<b>Total</b>	<b>33</b>	<b>100.0%</b>
<b>By Length of Time in Care</b>	<b>Number</b>	<b>Percentage</b>
Less than 30 Days	28	84.8%
31 Days to 12 Months	5	15.2%
13 to 24 Months	0	0.0%
More than 24 Months	0	0.0%
<b>Total</b>	<b>33</b>	<b>100.0%</b>

	<b>Average</b>	<b>Median</b>
<b>By Age</b>	7.9	7.8
<b>By Number of Placements</b>	1.2	1.0
<b>By Months of Time in Care</b>	0.8	0.1

**TABLE 39  
NUMBER AND PERCENTAGE OF CHILDREN LEAVING DES  
CUSTODY FOR REASON OF "ADOPTION" FOR THE REPORTING PERIOD  
ENDING MARCH 31, 2009**

<b>By Age</b>	<b>Number</b>	<b>Percentage</b>
Under 1	10	1.3%
Ages 1 - 5	433	56.7%
Ages 6 - 8	149	19.5%
Ages 9 - 12	110	14.4%
Ages 13 - 17	62	8.1%
18 and Over	0	0.0%
<b>Total</b>	<b>764</b>	<b>100.0%</b>
<b>Ethnicity</b>	<b>Number</b>	<b>Percentage</b>
Caucasian	339	44.5%
Hispanic	280	36.6%
African American	95	12.4%
American Indian	27	3.5%
Asian	7	0.9%
Other	16	2.1%
<b>Total</b>	<b>764</b>	<b>100.0%</b>
<b>By Number of Placements</b>	<b>Number</b>	<b>Percentage</b>
One	219	28.7%
Two	219	28.7%
Three	128	16.7%
Four	82	10.7%
Five	51	6.7%
More than Five	65	8.5%
<b>Total</b>	<b>764</b>	<b>100.0%</b>
<b>By Length of Time in Care</b>	<b>Number</b>	<b>Percentage</b>
Less than 30 Days	0	0.0%
31 Days to 12 Months	36	4.7%
13 to 24 Months	252	33.0%
More than 24 Months	476	62.3%
<b>Total</b>	<b>764</b>	<b>100.0%</b>

	<b>Average</b>	<b>Median</b>
<b>By Age</b>	6.0	4.9
<b>By Number of Placements</b>	2.8	2.0
<b>By Months of Time in Care</b>	30.0	27.2



**TABLE 40  
NUMBER AND PERCENTAGE OF CHILDREN LEAVING DES CUSTODY  
FOR REASON OF "GUARDIANSHIP" FOR THE REPORTING PERIOD  
ENDING MARCH 31, 2009**

<b>By Age</b>	<b>Number</b>	<b>Percentage</b>
Under 1	5	1.6%
Ages 1 - 5	69	22.4%
Ages 6 – 8	48	15.6%
Ages 9 - 12	85	27.6%
Ages 13 - 17	101	32.8%
18 and Over	0	0.0%
<b>Total</b>	<b>308</b>	<b>100.0%</b>
<b>Ethnicity</b>	<b>Number</b>	<b>Percentage</b>
Caucasian	101	32.9%
Hispanic	91	29.5%
African American	47	15.3%
American Indian	50	16.2%
Asian	1	0.3%
Other	18	5.8%
<b>Total</b>	<b>308</b>	<b>100.0%</b>
<b>By Number of Placements</b>	<b>Number</b>	<b>Percentage</b>
One	156	50.7%
Two	81	26.3%
Three	31	10.1%
Four	16	5.2%
Five	10	3.2%
More than Five	14	4.5%
<b>Total</b>	<b>308</b>	<b>100.0%</b>
<b>By Length of Time in Care</b>	<b>Number</b>	<b>Percentage</b>
Less than 30 Days	41	13.3%
31 Days to 12 Months	118	38.3%
13 to 24 Months	110	35.7%
More than 24 Months	39	12.7%
<b>Total</b>	<b>308</b>	<b>100.0%</b>

	<b>Average</b>	<b>Median</b>
<b>By Age</b>	10.0	10.2
<b>By Number of Placements</b>	2.0	1.0
<b>By Months of Time in Care</b>	14.1	12.7

**TABLE 41  
NUMBER AND PERCENTAGE OF CHILDREN LEAVING DES CUSTODY  
FOR REASONS OF "REACHING AGE OF MAJORITY" FOR THE REPORTING PERIOD  
ENDING MARCH 31, 2009**

<b>By Age</b>	<b>Number</b>	<b>Percentage</b>
Under 1	0	0%
Ages 1 - 5	0	0%
Ages 6 - 8	0	0%
Ages 9 - 12	0	0%
Ages 13 - 17	2	0.6%
18 and Over	335	99.4%
<b>Total</b>	<b>337</b>	<b>100.0%</b>
<b>Ethnicity</b>	<b>Number</b>	<b>Percentage</b>
Caucasian	163	48.3%
Hispanic	96	28.5%
African American	43	12.8%
American Indian	28	8.3%
Asian	4	1.2%
Other	3	0.9%
<b>Total</b>	<b>337</b>	<b>100.0%</b>
<b>By Number of Placements</b>	<b>Number</b>	<b>Percentage</b>
One	25	7.4%
Two	41	12.2%
Three	47	13.9%
Four	21	6.2%
Five	21	6.2%
More than Five	182	54.1%
<b>Total</b>	<b>337</b>	<b>100.0%</b>
<b>By Length of Time in Care</b>	<b>Number</b>	<b>Percentage</b>
Less than 30 Days	1	0.3%
31 Days to 12 Months	67	19.9%
13 to 24 Months	54	16.0%
More than 24 Months	215	63.8%
<b>Total</b>	<b>337</b>	<b>100.0%</b>

	<b>Average</b>	<b>Median</b>
<b>By Age</b>	18.7	18.1
<b>By Number of Placements</b>	7.5	6.0
<b>By Months of Time in Care</b>	45.3	32.5

**TABLE 42  
NUMBER AND PERCENTAGE OF CHILDREN LEAVING DES CUSTODY  
FOR REASON OF "TRANSFER TO ANOTHER AGENCY" FOR THE REPORTING PERIOD  
ENDING MARCH 31, 2009**

<b>By Age</b>	<b>Number</b>	<b>Percentage</b>
Under 1	14	12.6%
Ages 1 – 5	45	40.6%
Ages 6 – 8	15	13.5%
Ages 9 – 12	5	4.5%
Ages 13 – 17	31	27.9%
18 and Over	1	0.9%
<b>Total</b>	<b>111</b>	<b>100.0%</b>
<b>Ethnicity</b>	<b>Number</b>	<b>Percentage</b>
Caucasian	43	38.8%
Hispanic	28	25.2%
African American	15	13.5%
American Indian	18	16.2%
Asian	2	1.8%
Other	5	4.5%
<b>Total</b>	<b>111</b>	<b>100.0%</b>
<b>By Number of Placements</b>	<b>Number</b>	<b>Percentage</b>
One	50	45.1%
Two	32	28.8%
Three	7	6.3%
Four	12	10.8%
Five	4	3.6%
More than Five	6	5.4%
<b>Total</b>	<b>111</b>	<b>100.0%</b>
<b>By Length of Time in Care</b>	<b>Number</b>	<b>Percentage</b>
Less than 30 Days	17	15.3%
31 Days to 12 Months	48	43.3%
13 to 24 Months	24	21.6%
More than 24 Months	22	19.8%
<b>Total</b>	<b>111</b>	<b>100.0%</b>

	<b>Average</b>	<b>Median</b>
<b>By Age</b>	7.3	4.6
<b>By Number of Placements</b>	2.4	2.0
<b>By Months of Time in Care</b>	14.5	8.9

**TABLE 43  
NUMBER AND PERCENTAGE OF CHILDREN LEAVING DES CUSTODY  
FOR REASON OF “RUNAWAY” FOR THE REPORTING PERIOD  
ENDING MARCH 31, 2009**

<b>By Age</b>	<b>Number</b>	<b>Percentage</b>
Under 1	0	0.0%
Ages 1 – 5	0	0.0%
Ages 6 – 8	0	0.0%
Ages 9 – 12	0	0.0%
Ages 13 – 17	74	97.4%
18 and Over	2	2.6%
<b>Total</b>	<b>76</b>	<b>100.0%</b>
<b>Ethnicity</b>	<b>Number</b>	<b>Percentage</b>
Caucasian	33	43.5%
Hispanic	32	42.1%
African American	8	10.5%
American Indian	1	1.3%
Asian	0	0.0%
Other	2	2.6%
<b>Total</b>	<b>76</b>	<b>100.0%</b>
<b>By Number of Placements</b>	<b>Number</b>	<b>Percentage</b>
One	52	68.4%
Two	10	13.2%
Three	3	3.9%
Four	7	9.2%
Five	0	0.0%
More than Five	4	5.3%
<b>Total</b>	<b>76</b>	<b>100.0%</b>
<b>By Length of Time in Care</b>	<b>Number</b>	<b>Percentage</b>
Less than 30 Days	48	63.2%
31 Days to 12 Months	14	18.4%
13 to 24 Months	8	10.5%
More than 24 Months	6	7.9%
<b>Total</b>	<b>76</b>	<b>100.0%</b>

	<b>Average</b>	<b>Median</b>
<b>By Age</b>	16.6	16.7
<b>By Number of Placements</b>	2.1	1.0
<b>By Months of Time in Care</b>	6.7	0.3

**TABLE 44**  
**NUMBER AND PERCENTAGE OF CHILDREN LEAVING DES CUSTODY**  
**FOR REASON OF “DEATH OF CHILD” FOR THE REPORTING PERIOD ENDING**  
**MARCH 31, 2009**

<b>By Age</b>	<b>Number</b>	<b>Percentage</b>
Under 1	1	16.7%
Ages 1 - 5	4	66.7%
Ages 6 – 8	0	0.0%
Ages 9 - 12	0	0.0%
Ages 13 - 17	1	16.7%
18 and Over	0	0.0%
<b>Total</b>	<b>6</b>	<b>100.0%</b>
<b>Ethnicity</b>	<b>Number</b>	<b>Percentage</b>
Caucasian	2	33.3%
Hispanic	1	16.7%
African American	2	33.3%
American Indian	1	16.7%
Asian	0	0.0%
Other	0	0.0%
<b>Total</b>	<b>6</b>	<b>100.0%</b>
<b>By Number of Placements</b>	<b>Number</b>	<b>Percentage</b>
One	3	50.0%
Two	2	33.3%
Three	0	0.0%
Four	1	16.7%
Five	0	0.0%
More than Five	0	0.0%
<b>Total</b>	<b>6</b>	<b>100.0%</b>
<b>By Length of Time in Care</b>	<b>Number</b>	<b>Percentage</b>
Less than 30 Days	0	0.0%
31 Days to 12 Months	4	66.7%
13 to 24 Months	2	33.3%
More than 24 Months	0	0.0%
<b>Total</b>	<b>6</b>	<b>100.0%</b>

	<b>Average</b>	<b>Median</b>
<b>By Age</b>	4.4	2.3
<b>By Number of Placements</b>	1.8	1.5
<b>By Months of Time in Care</b>	7.9	7.4

**TABLE 45  
CHILDREN EXITING CARE FOR REASON OF DEATH BY CAUSE OF DEATH,  
PLACEMENT TYPE AT TIME OF DEATH, AND COUNTY**

COUNTY	CAUSE OF DEATH	TYPE OF PLACEMENT AT TIME OF DEATH
Graham	Suicide	Independent Living
Pima	Cardiac failure	Family Foster Home
Pima	Complications in a pre-existing medical condition	Family Foster Home
Maricopa	No initial abuse or neglect was identified by the autopsy	Family Foster Home
Maricopa	Pneumonia	Family Foster Home
Maricopa	Autopsy pending	Family Foster Home

**TABLE 46  
NUMBER OF CHILDREN IN AN OPEN CASE WHO DIED AS A RESULT OF ALLEGED  
ABUSE AS CATEGORIZED BY THE CUSTODIAL RELATIONSHIP AND COUNTY FOR THE  
PERIOD OCTOBER 1, 2008 THROUGH MARCH 31, 2009**

COUNTY	BIOLOGICAL PARENT(S)	OTHER FAMILY MEMBER	ADOPTIVE PARENT(S)	FOSTER CARE PARENT(S)	OTHER OUT-OF-HOME CARE PROVIDER	TOTAL	% OF TOTAL
APACHE	0	0	0	0	0	0	0.0%
COCHISE	0	0	0	0	0	0	0.0%
COCONINO	0	0	0	0	0	0	0.0%
GILA	0	0	0	0	0	0	0.0%
GRAHAM	0	0	0	0	0	0	0.0%
GREENLEE	0	0	0	0	0	0	0.0%
LA PAZ	0	0	0	0	0	0	0.0%
MARICOPA	1	0	0	0	0	1	100.0%
MOHAVE	0	0	0	0	0	0	0.0%
NAVAJO	0	0	0	0	0	0	0.0%
PIMA	0	0	0	0	0	0	0.0%
PINAL	0	0	0	0	0	0	0.0%
SANTA CRUZ	0	0	0	0	0	0	0.0%
YAVAPAI	0	0	0	0	0	0	0.0%
YUMA	0	0	0	0	0	0	0.0%
STATEWIDE	1	0	0	0	0	1	100.0%
% OF TOTAL	100.0%	0.0%	0.0%	0.0%	0.0%	100.0%	

**CHILDREN WITH ADOPTIVE CASE PLAN GOALS**

Of the 10,404 children in out-of-home care on March 31, 2009, 2,047 or 19.7 percent had a case plan goal of adoption. The majority of those children, 44.4 percent, are in the 1-5 year old age range, followed by 18.6 percent in the 6-8 year old age range, and 20.0 percent in the 9-12 year old age range. The remaining children, 344 or 16.8 percent, fall within the under one or 13 and over age range. The majority of these children are Caucasian (813 or 39.7 percent), Hispanic (806 or 39.4 percent), or African American (280 or 13.7 percent). The remaining 148 children or 7.2 percent are American Indian, Asian or other. Eighty-eight and four tenths of a percent, or 1,809 of the children free for adoption, are currently placed in their adoptive homes.

**TABLE 47  
NUMBER OF CHILDREN WITH A PETITION FOR TERMINATION OF PARENTAL RIGHTS  
BY COUNTY FOR THE PERIOD OCTOBER 1, 2008 THROUGH MARCH 31, 2009**

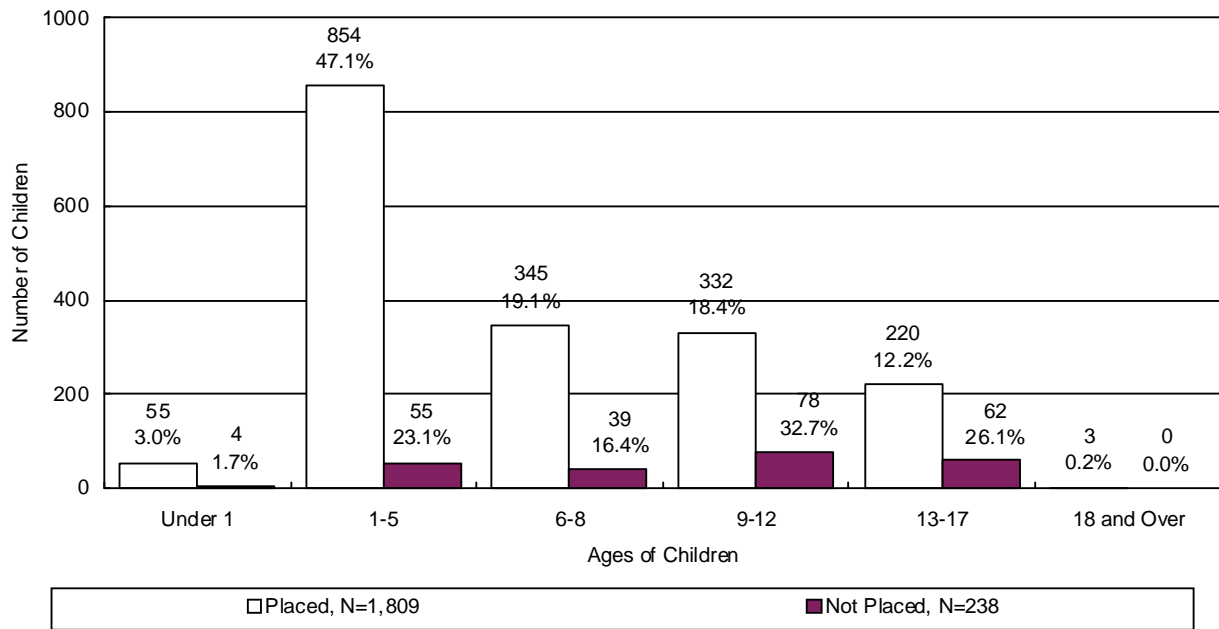
COUNTY	TERMINATION OF RIGHTS GRANTED	TERMINATION OF RIGHTS DENIED	TERMINATION OF RIGHTS GRANTED IN PART/DENIED IN PART	TERMINATION OF RIGHTS WITHDRAWN	TOTAL	% OF TOTAL
APACHE	1	0	0	0	1	0.1%
COCHISE	19	0	0	0	19	2.2%
COCONINO	9	0	0	1	10	1.2%
GILA	3	0	0	0	3	0.3%
GRAHAM	2	0	0	0	2	0.2%
GREENLEE	2	0	0	0	2	0.2%
LA PAZ	0	0	0	0	0	0.0%
MARICOPA	465	1	7	19	492	57.3%
MOHAVE	29	0	0	0	29	3.4%
NAVAJO	8	0	0	3	11	1.3%
PIMA	216	0	0	3	219	25.5%
PINAL	28	0	0	3	31	3.6%
SANTA CRUZ	2	0	0	0	2	0.2%
YAVAPAI	21	0	0	0	21	2.4%
YUMA	18	0	0	0	18	2.1%
STATEWIDE	823	1	7	29	860	100.0%
% OF TOTAL	95.7%	0.1%	0.8%	3.4%	100.0%	

The average length of time that a child with a case plan goal of “adoption” has spent in out-of-home care is 2 years, 5 months. There were a total of 2,047 children with case plan goals of adoption during this reporting period. Of this total, 1,809 were placed and 238 were not placed. The population of children with case plan goals of adoption averaged 3.2 placements and had a median placement count of 2.0. Their placement count ranged from 1 to 38.

**TABLE 48**  
**PLACEMENT INFORMATION FOR CHILDREN WITH A CASE PLAN GOAL OF ADOPTION**

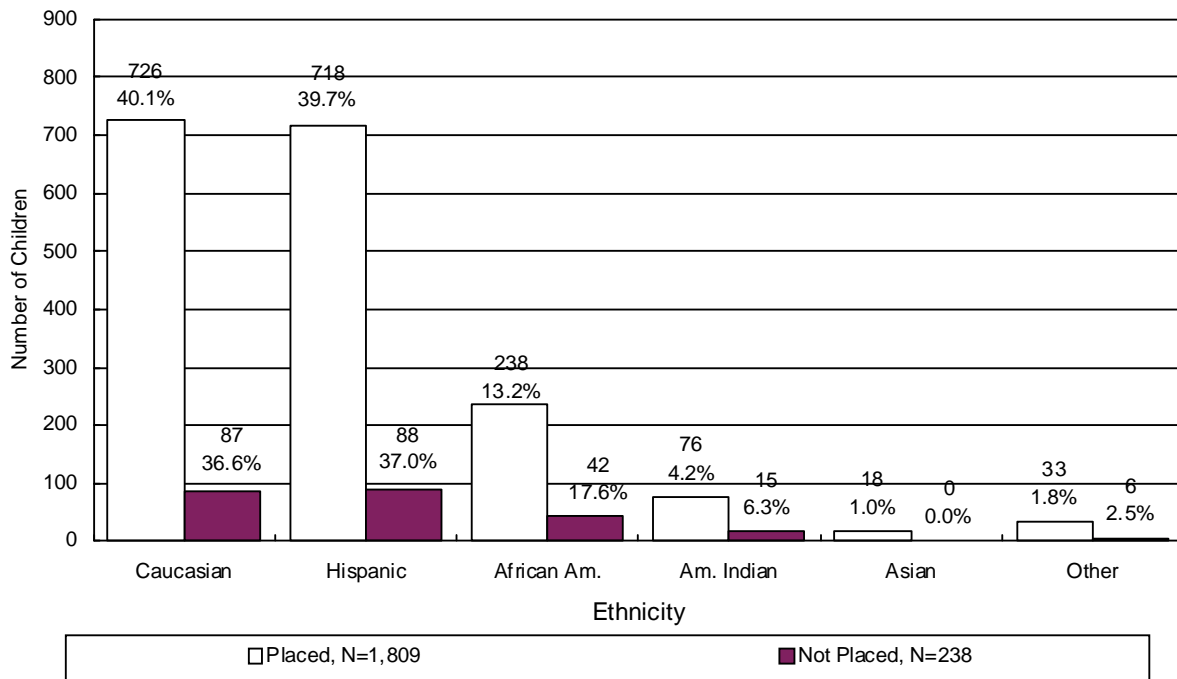
	<b>Placements</b>
<b>Average</b>	3.2
<b>Median</b>	2.0
<b>Range Minimum</b>	1.0
<b>Range Maximum</b>	38.0

**CHART 36**  
**THE PLACEMENT AND NUMBER OF CHILDREN WITH A CASE PLAN GOAL OF ADOPTION BY AGE**

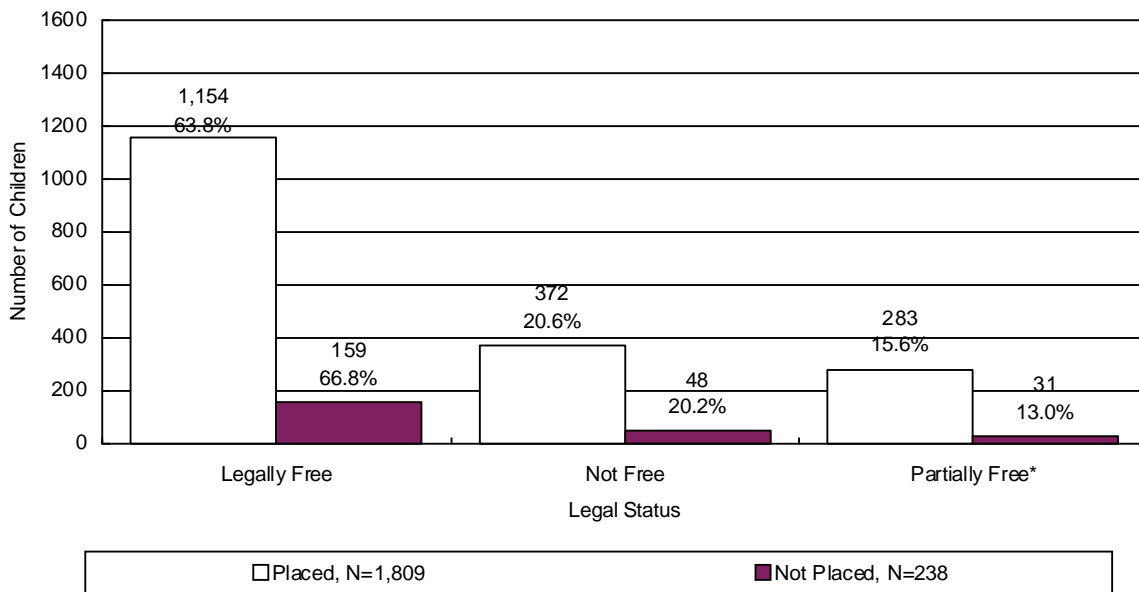




**CHART 37**  
**THE PLACEMENT AND NUMBER OF CHILDREN WITH A CASE PLAN GOAL OF ADOPTION BY ETHNICITY**

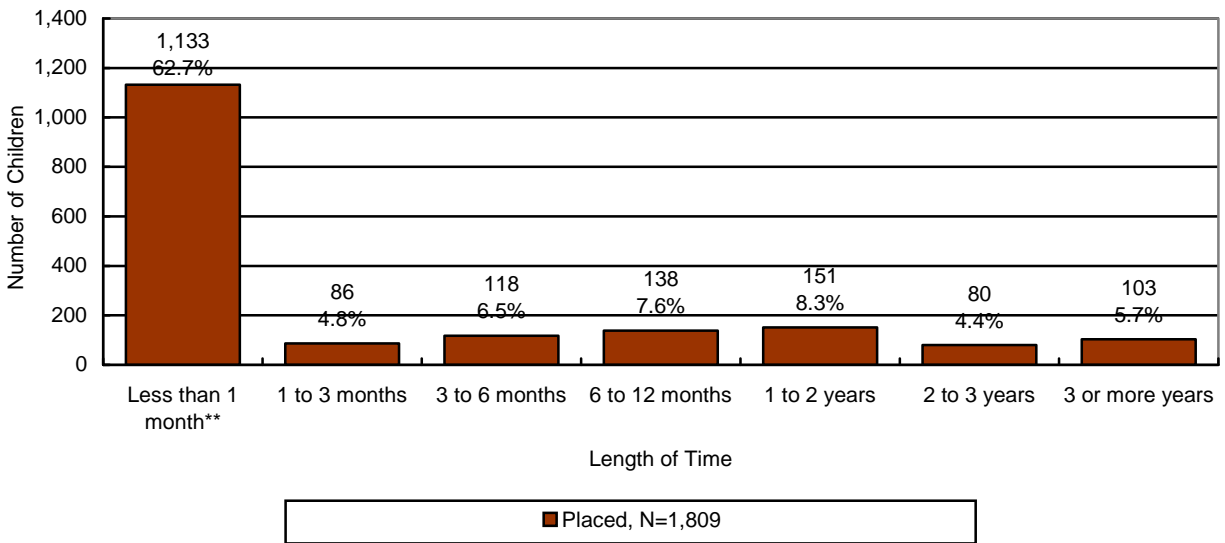


**CHART 38**  
**THE PLACEMENT AND NUMBER OF CHILDREN WITH A CASE PLAN GOAL OF ADOPTION BY LEGAL STATUS**



\*Partially free refers to a situation where only one of the parent's rights has been severed.

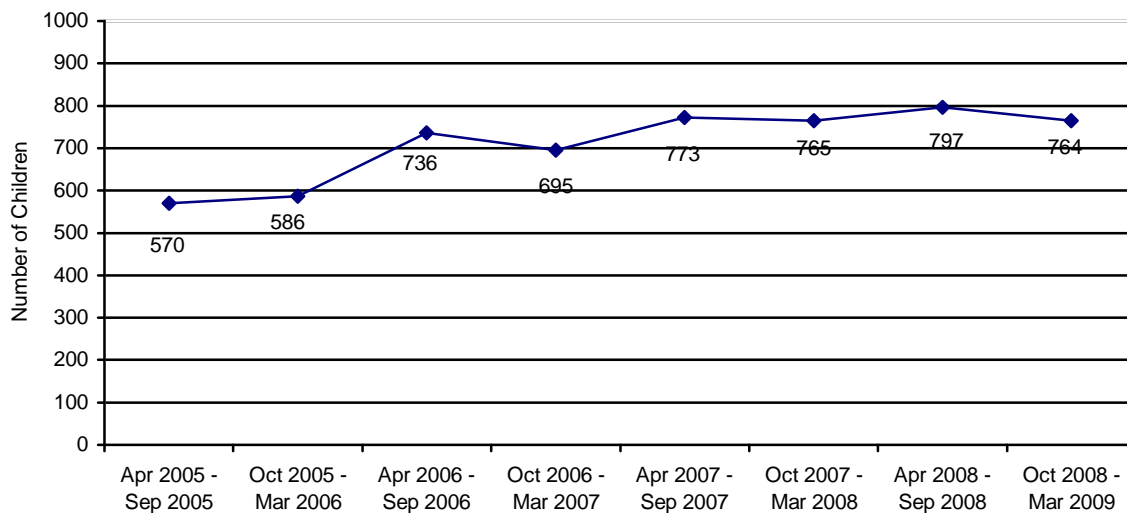
**CHART 39**  
**THE NUMBER OF CHILDREN WITH A CASE PLAN GOAL OF ADOPTION BY LENGTH OF TIME FROM CHANGE OF CASE PLAN GOAL OF ADOPTION TO ADOPTIVE PLACEMENT**



\*\*About 70 percent of children are adopted by relatives or their foster parents and are already in their prospective adoptive placement at the time the case plan goal changes to adoption.

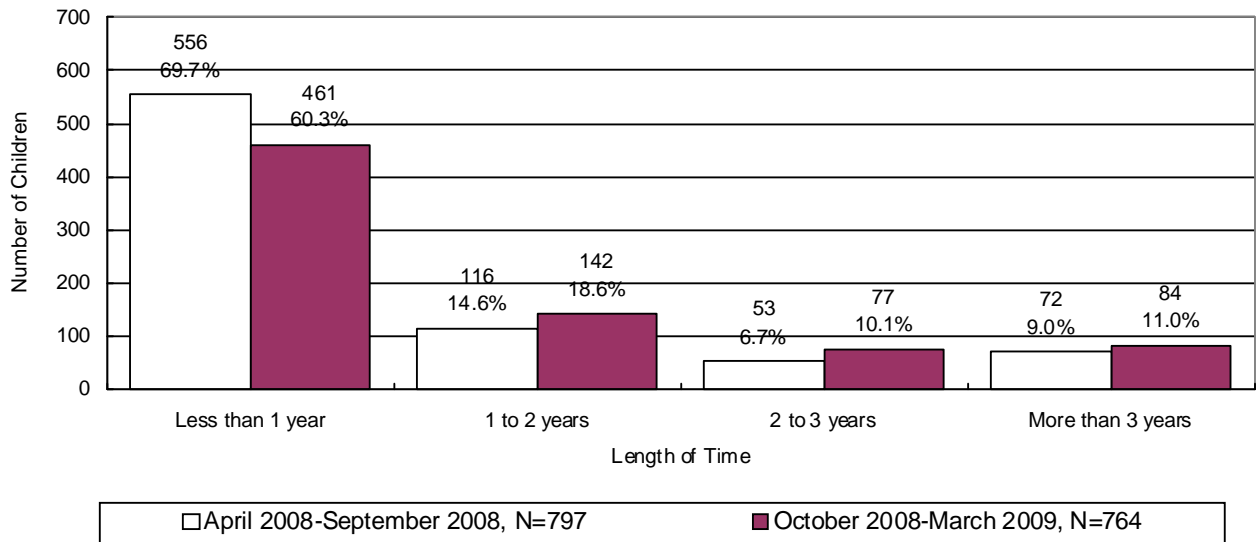
**ADOPTIVE SERVICES**

**CHART 40**  
**THE NUMBER OF CHILDREN WITH A FINALIZED ADOPTION**



There were 764 children with a finalized adoption during the reporting period. Chart 41 displays the number of children with a finalized adoption during the reporting period by the average length of time in out-of-home placement before adoptive placement.

**CHART 41  
THE NUMBER AND PERCENTAGE OF CHILDREN WITH A FINALIZED ADOPTION BY AVERAGE LENGTH OF TIME IN OUT-OF-HOME PLACEMENT BEFORE ADOPTIVE PLACEMENT**



The chart below displays the number of children with a finalized adoption by average length of time in adoptive placement before the final order of adoption.

**CHART 42  
THE NUMBER AND PERCENTAGE OF CHILDREN WITH A FINALIZED ADOPTION BY AVERAGE LENGTH OF TIME IN ADOPTIVE PLACEMENT BEFORE THE FINAL ORDER OF ADOPTION**

