



DEPARTMENT OF ECONOMIC SECURITY

Your Partner For A Stronger Arizona

Janice K. Brewer
Governor

Neal Young
Director

SEP 16 2010

The Honorable Janice K. Brewer
Governor of Arizona
1700 West Washington
Phoenix, Arizona 85007

Dear Governor Brewer:

Pursuant to A.R.S. § 8-526, the Arizona Department of Economic Security (DES) submits the enclosed semi-annual report on child welfare for the period of October 1, 2009 through March 31, 2010. This report provides information relative to reports of child abuse and neglect, investigations, shelter and receiving home services, foster homes, length of care, and adoptions.

We continue to work diligently to improve the quality of services for children and their families. Compiling this report provides us another opportunity to review our work and consider new ways to improve.

If you have any questions, please contact me at (602) 542-5757.

Sincerely,

Neal Young
Director

Enclosure

cc: President Robert L Burns, Arizona State Senate
Speaker Kirk D. Adams, Arizona State House of Representatives
Senator Linda Gray, Chairman, Senate Public Safety and Human Services Committee
Representative Nancy K. Barto, Chairman, Senate Public Safety and Human Services Committee
Secretary of State Ken Bennett
GladysAnn Wells, Director, Arizona State Library, Archives, and Public Records
Christine Estes-Werther, Policy Advisor for Human Services, Office of the Governor
John Arnold, Director, Governor's Office of Strategic Planning and Budgeting
Eileen Klein, Chief of Staff, Office of the Governor
Nicole Davis, Division Chief Council, Child and Family Protection Division, Office of the Attorney General
Amber O'Dell, Analyst, Senate Public Safety and Human Services Committee
Ingrid Garvey, Analyst, House Health and Human Services Committee
Wendy Baldo, Chief of Staff, Senate Majority Caucus
Barbara Guenther, Policy Advisor, Senate Democratic Caucus
Steve Moortel, Policy Advisor, House Majority Caucus
Holly Baumann, Policy Advisor, House Democratic Caucus

CHILD WELFARE REPORTING REQUIREMENTS

SEMI-ANNUAL REPORT

FOR THE PERIOD OF

OCTOBER 1, 2009 THROUGH MARCH 31, 2010

ARIZONA REVISED STATUTES

[LAWS 2006, CHAPTER 203]

ARIZONA DEPARTMENT OF ECONOMIC SECURITY

DIVISION OF CHILDREN, YOUTH AND FAMILIES

ADMINISTRATION FOR CHILDREN, YOUTH AND FAMILIES

CHILD WELFARE REPORTING REQUIREMENTS

Arizona Revised Statute § 8-526, as amended by Laws 2006, Chapter 203 requires the Arizona Department of Economic Security (DES) to compile information and produce a semi-annual report for the periods ending on March 31 and September 30 of each year regarding Child Welfare Services, including Child Protective Services (CPS). This report, submitted in satisfaction of that mandate, is for the semi-annual reporting period beginning on October 1, 2009 and ending on March 31, 2010.

TABLE OF CONTENTS

(Reporting period: October 1, 2009 through March 31, 2010)

	<u>Page</u>
EXECUTIVE SUMMARY	4
SEMI-ANNUAL COMPARISONS	7
REPORTS OF CHILD ABUSE AND NEGLECT	
Reports by reporting period and type of child maltreatment – statewide data	8
Sample communications to hotline, not meeting definition of report	10
Reports received by risk level- statewide data	11
Number of reports received by risk level – county specific data	11
Number of reports received by maltreatment – statewide data	12
Number of reports received by maltreatment – county specific data	13
ASSIGNMENT OF INVESTIGATIONS	
Reports assigned for investigation by risk level – statewide data	14
Reports assigned for investigation by risk level – county specific data	14
Reports assigned for investigation by type of maltreatment – statewide data	15
Reports assigned for investigation by type of maltreatment – county specific data	16
INVESTIGATIONS OF CHILD ABUSE AND NEGLECT	
Reports not responded to by risk level – county specific data	17
Investigations by risk level – investigation still open – statewide data	18
Investigations by risk level – investigation still open – county specific data	19
Investigations by type of child maltreatment – investigation still open – statewide data	20
Investigations by type of child maltreatment – investigation still open – county specific data	20
Reports where removal occurred – county specific data	22
COMPLETED INVESTIGATIONS	
Substantiation rate by reporting period	24
Investigations by risk level – proposed substantiated reports – statewide data	25

TABLE OF CONTENTS (continued)
(Reporting period: October 1, 2009 through March 31, 2010)

	<u>Page</u>
Investigations by risk level – proposed substantiated reports – county specific data	25
Investigations by type of child maltreatment – proposed substantiated reports – statewide data	26
Investigations by type of child maltreatment – proposed substantiated reports – county specific data	27
Investigations by risk level – substantiated reports – statewide data	28
Investigations by risk level – substantiated reports county specific data	28
Investigations by type of child maltreatment – substantiated reports – statewide data	29
Investigations by type of child maltreatment – substantiated reports – county specific data	30
Investigations by risk level – unsubstantiated reports – statewide data	31
Investigations by risk level – unsubstantiated reports – county specific data	31
Investigations by type of child maltreatment – unsubstantiated reports – statewide data	32
Investigations by type of child maltreatment – unsubstantiated reports – county specific data	33
SAFE HAVEN INFANTS	
Number of Safe Haven infants delivered during reporting period	34
CHILDREN ENTERING OUT-OF-HOME CARE	
New entries by county – children under 18 years voluntary placement	35
New entries by county	37
New entries – statewide data	38
CHILDREN IN OUT-OF-HOME CARE	
Children in out-of-home care by reporting period	39
Children in group homes ages 0-6	40
Children in shelter ages 0-3	40
The average length of stay in a shelter placement for children ages 0-3 in a shelter placement on the last day of the reporting period	41
All children in care by age and ethnicity	41-42
All children in care by case plan goal and placement type	42-43
All children in care by placement type and age	44
Children in shelter or receiving homes for more than 21 days	45
Children in out-of-home care by length of time in care	46
Children in out-of-home care by legal status	47
Children receiving required visitation	48
FOSTER HOME LICENSING, CLOSURES, AND VISITATIONS	
Foster homes licensed	49
Foster homes closed and reason for closure	49
Child bed spaces available	49

TABLE OF CONTENTS (continued)
(Reporting period: October 1, 2009 through March 31, 2010)

	<u>Page</u>
Number of foster homes receiving the required visitation	50
 CHILDREN LEAVING OUT-OF-HOME CARE	
Semi-Annual comparisons of total number leaving care – For all reasons	51
Total number leaving care	52
Total number leaving care – For reason of reunification with parents	53
Total number leaving care – For reason of living with other relatives	54
Total number leaving care – For reason of adoption	55
Total number leaving care – For reason of guardianship	56
Total number leaving care – For reason of reaching age of majority	57
Total number leaving care – For reason of transfer to another agency	58
Total number leaving care – For reason of runaway	59
Total number leaving care – For reason of death of child	60
Total number leaving care – by cause of death	61
Total number for reason of death of child – with alleged abuse	61
 CHILDREN WITH CASE PLAN GOALS OF ADOPTION	
Number of children with a petition for termination of parental rights	62
The placement and number of children with case plan goals of adoption by age	63
The placement and number of children with case plan goals of adoption by ethnicity	64
The placement and number of children with case plan goals of adoption by legal status	64
Number of children – length of time from change of case plan goal of adoption to adoptive placement	65
 ADOPTIVE SERVICES	
Number of children with a finalized adoption by average length of time in out-of-home placement before adoptive placement	66
Number of children with a finalized adoption by average length of time in adoptive placement before the final order of adoption	66

Executive Summary

The Arizona Department of Economic Security's Division of Children, Youth and Families (Division) is pleased to publish this semi-annual report for October 2009 through March 2010 in compliance with A.R.S. § 8-526. This report is intended to provide its readers an opportunity to review the Division's progress in implementing systemic improvement strategies as they impact key performance indicators.

The Division continues to implement the key strategies for (1) enhancing the ability of parents to create safe, stable and nurturing home environments; (2) strengthening families so children can remain safely in their homes; (3) finding more permanent homes more quickly for children; and (4) placing children in the least restrictive, most family-like setting possible.

The improved outcomes for children and families that have resulted from the implementation of those strategies have been highlighted in previous editions of this report and other Division publications. Additional successes are expected as the Division continues the statewide implementation of other continuous improvement strategies, such as embedding the Division's comprehensive Child Safety Assessment, Strengths and Risk Assessment, and Case Planning (CSA/SRA/CP) process into child welfare practice. This enhanced process assists child welfare specialists in more effectively assessing risk and engaging families in planning for and completing the services that are going to help them to create safe, stable living environments for their children.

The data contained in this *Semi-Annual Report*, when combined with other child welfare-related information in the Department, demonstrate the significant progress made in many of the Division's areas of focus and identify areas where continued focus is needed.

Child Abuse Hotline and Child Protective Services (CPS) Investigations

The statewide Child Abuse Hotline received 28,339 calls during this reporting period. Of those, 11,229 – or 39.6 percent – *did not meet* the statutory criteria for a CPS report. Calls that did not meet the criteria for a CPS report included: requests for information or referrals for services; questions about current cases; and allegations of abuse or neglect where the alleged perpetrator was not the child's parent, guardian or custodian (those calls are referred to law enforcement for response). Every call that does not meet the criteria for a CPS report is reviewed within 48 hours by quality assurance staff to ensure the accuracy of that decision.

The statewide Child Abuse Hotline received 17,110 calls during this reporting period that met the statutory criteria for a CPS report. Of those, 220 were referred to other jurisdictions, the military or tribal governments for investigation and an additional 288 reports were not assigned for investigation, primarily as a result of the impact of staffing reductions pursuant to budget reduction strategies. This resulted in 16,602 CPS reports being assigned to child welfare specialists for investigation. Compared to the same reporting period last year, this represents a decrease of 218 CPS reports assigned for investigation – or 1.3 percent. This decrease in CPS reports requiring an investigation has mainly occurred in Maricopa and Pima counties.

Of the 16,602 CPS reports assigned for investigation during this reporting period, 8,149 reports – or 49.1 percent – had investigation closures entered into the Children's Information Library and Data Source (CHILDS) statewide case management information system. Closing a case means that the initial investigation to the original allegations of abuse or neglect has been completed and the appropriate case plan is put in place, as needed. Many factors can impact the closure of investigations, including time

needed for child welfare specialists to obtain all information needed to complete an accurate and thorough assessment.

Of the 16,602 CPS reports subject to substantiation during this reporting period, 1,311 – or 7.9 percent – were substantiated. An additional 447 CPS reports – or 2.7 percent – were proposed for substantiation by child welfare specialists and are currently awaiting the results of the appeals process. Over time, the number of substantiated and proposed substantiated CPS reports associated with this time period will increase as investigation findings are entered into CHILDS. It is sometimes difficult to substantiate allegations of abuse or neglect because current state laws that define child maltreatment do not include many situations related to child neglect or sexual abuse.

Children in Out-of-Home Care

The Division remains committed to working with the community to keep children safe, strengthen families, and prevent the need for children to be removed from their homes. The number of children in out-of-home care increased slightly from 10,112 in the prior reporting period to 10,207 in March 2010. Of the children in out-of-home care, the Division continues its success in placing children in the most family-like setting possible. In March 2010, 8,437 children – or 82.6 percent of all children in out-of-home care – were placed with relatives or licensed foster parents. An additional 46 children were placed with their parents on a trial home visit and 293 youth were residing in independent living settings. Efforts to increase the number of licensed foster parents who are able to meet the needs of children requiring out-of-home placement resulted in 560 new homes being licensed during this reporting period.

The Division continues to focus on the number of young children in shelter and group home care. In March 2010, there were 22 young children ages 0 through 3 in shelter care. This represents a decrease of 9 children – or 29.0 percent – since March 2006. Placement of young children in shelter care continues to be influenced by the need to place some children after regular work hours, such as weekends, as well as the placement of children in a specialized shelter in Pima County for medically fragile children. The Division has also worked diligently to reduce the number of very young children in group homes. In March 2010, there were 4 young children ages 0 to 6 in group homes. This represents a decrease of 32 children – or 88.9 percent – since March 2006. There are times when placement of young children in group homes is in the best interests of the children; for example, when group placement would allow siblings to stay together or when group placement is considered the least restrictive placement for a child with behavioral issues.

Since March 2005, the number of children placed in shelter or receiving home care for 21 days or more decreased by 704 children – or 62.5 percent – a significant improvement. Compared to the same reporting period last year, the number of children in these temporary care settings decreased by 106 children – or 20.1 percent.

The state requires monthly face to face visitation with children in foster care. The current report shows that 87.9 percent of the children in foster care received their visitation during the last month of the reporting period. This compares to 81.1 percent receiving their visit during the last month of the reporting period ending September 2009. The Department recognizes a strong correlation between caseworker visits with children and positive outcomes for these children, such as achieving permanency and other indicators of child well-being, and continues to make efforts to improve our rate of visitation.

Permanency for Children

The Division continues to work toward achieving permanency for children placed in out-of-home care. The total number of children achieving permanency through family reunification, adoption or legal guardianship was 3,124 this reporting period, compared to 3,027 the same reporting period last year. As evidenced below, the Division increased adoptions by 35.3 percent over the same period a year ago; it also increased

guardianship by 1.3 percent for the same period. The reunification of children with their parents for the same period a year ago decreased by 9.1 percent.

Compared to the same reporting period last year, in this reporting period:

- 1,778 children exited the system to family reunification, a decrease of 177 children – or 9.1 percent.
- 1,034 children exited to adoption, an increase of 270 children – or 35.3 percent.
- 312 children exited to guardianship, an increase of 4 children – or 1.3 percent.

Challenges

The Division faces a number of challenges in its efforts to ensure safety and promote permanency for abused and neglected children. Some of the challenges the Division has faced in meeting these goals are:

- Retention of trained and qualified staff.
- Economic factors which create additional stress upon families and increases factors that place children at risk of maltreatment.
- Budget reductions which impacts the array of services available to families and decreases the Division's capacity to contract for family support and prevention services.

Despite these challenges, the Division continues to ensure child welfare staff has the tools they need to do their jobs effectively, and that both state and federal standards are being implemented. The Division continues to work in partnership with the federal government to meet the federal Child and Family Service Review (CFSR) standards to improve outcomes for the children and families we serve.

Semi-Annual Comparisons

	Apr 2006 through Sep 2006	Oct 2006 through Mar 2007	Apr 2007 through Sep 2007	Oct 2007 through Mar 2008	Apr 2008 through Sep 2008	Oct 2008 through Mar 2009	Apr 2009 through Sep 2009	Oct 2009 through Mar 2010
Number of Reports Received	16,781	16,612	18,078	17,628	17,493	17,094	16,134	17,110
Number of Reports Substantiated ¹	1,376	1,369	1,413	1,223	1,331	1,238	1,296	1,311
Substantiation Rate	10%	10%	10%	8%	9%	9%	9%	8%
Number of Reports Investigated & Closed	16,256	15,017	12,722	10,760	10,064	10,686	10,397	8,149
Number of Reports Responded To	16,619	16,422	17,876	17,413	17,310	16,820	15,496	16,602
Number of new removals	3,773	3,683	3,924	3,742	4,546	3,889	3,819	3,936
Number of new removals with Voluntary under 18	386	398	468	408	370	319	148	125
Number of Children in Out-of-Home Care on the Last Day of Reporting Period	9,833	9,773	9,701	9,721	10,303	10,404	10,112	10,207
Number of Children in Shelter for More than 21 Days	744	705	679	626	585	529	450	423
Number and Percentage of Children Receiving Visitation In the Last Month of Reporting Period	6,437 (65.5%)	7,610 (77.9%)	7,283 (75.1%)	7,376 (75.9%)	7,664 (74.4%)	7,247 (69.7%)	8,201 (81.1%)	8,973 (87.9%)
Number and Percentage of Children not Receiving Visitation	3,396 (34.5%)	2,163 (22.1%)	2,418 (24.9%)	2,345 (24.1%)	2,639 (25.6%)	3,157 (30.3%)	1,911 (18.9%)	1,234 (12.1%)
Number and Percentage of Parents Receiving Visitation	1,131 (51.8%)	1,398 (63.1%)	1,241 (63.5%)	1,025 (62.3%)	1,022 (60.2%)	939 (53.6%)	1,364 (59.6%)	1,578 (64.8%)
Number of Licensed Foster Homes	3,256	3,177	3,512	3,592	3,615	3,923	3,954	3,932
Number of Foster Home Spaces Available to ACYF	6,469	6,498	6,639	6,283	7,116	8,293	8,625	8,789
Number of New Foster Homes	426	432	435	794	162	648	107	560
Number of Foster Homes Closed	166	232	100	445	139	340	76	582
Number and Percentage of Foster Homes Receiving Visitation In the Last Qtr. Of Reporting Period	1,790 (55.0%)	2,116 (66.6%)	1,739 (49.5%)	2,137 (59.5%)	2,412 (66.7%)	2,993 (76.3%)	3,224 (81.6%)	3,240 (82.4%)
Number and Percentage of Foster Homes not Receiving Visitation	1,466 (45.0%)	1,061 (33.4%)	1,773 (50.5%)	1,455 (40.5%)	1,203 (33.3%)	930 (23.7%)	730 (18.4%)	692 (17.6)
Number of Children Leaving DES Custody	3,595	3,553	3,824	3,512	3,773	3,590	3,894	3,650
Number of Children With a Case Plan Goal of Adoption	2,302	2,439	2,186	1,954	1,856	2,047	2,505	2,411
Number of Children With a Finalized Adoption	736	695	773	765	797	764	891	1,034

¹ Since the appeals process delays the substantiation of reports, revisions to the substantiation rate for the prior reporting period will occur with every semi-annual report produced.

Reports of Abuse & Neglect

Child abuse and neglect are defined in A.R.S. §8-201 and A.R.S. §13-3623 (A). These definitions provide the major categories in this report.

Between October 1, 2009 and March 31, 2010, there were 17,110 incoming communications to the Child Abuse Hotline that met the criteria for a report of abuse or neglect. Of these, 220 were within the jurisdiction of military or tribal governments and were referred to those jurisdictions. This compares to 16,134 incoming communications received during the last reporting period which met the criteria of a report of abuse or neglect.

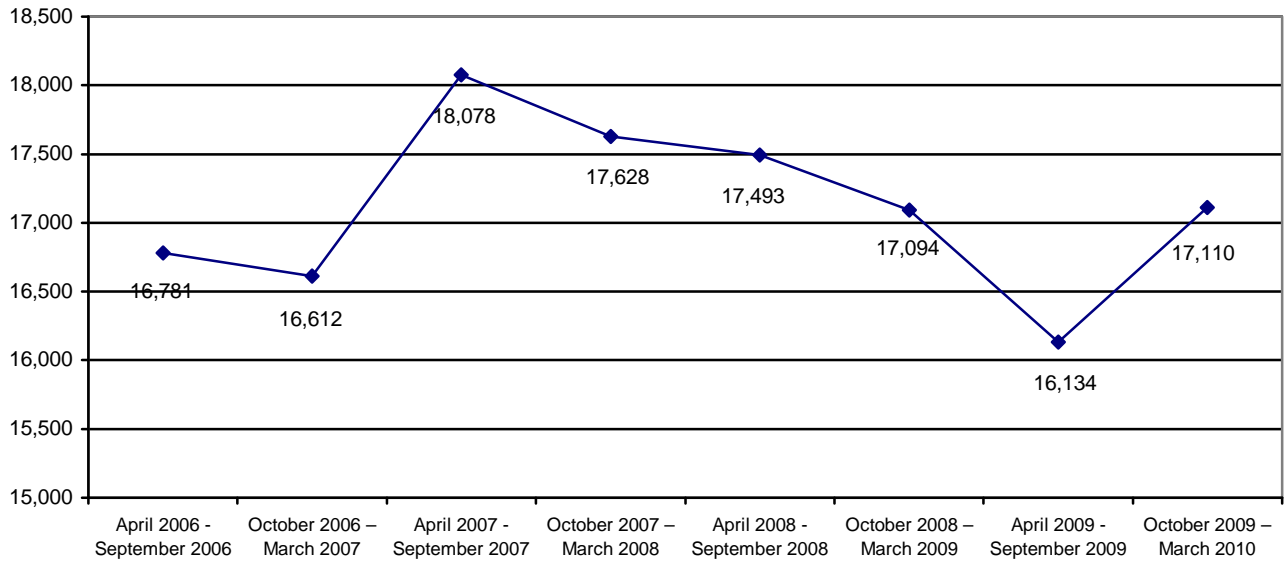
Table 1 shows the number of reports received by the Department by category of maltreatment for the last eight reporting periods. The table shows that for the current reporting period 10,127 or 59.2 percent of the 17,110 reports of maltreatment were related to allegations of neglect, 5,866 or 34.3 percent of the reports were related to allegations of physical abuse, 930 or 5.4 percent of the reports were related to allegations of sexual abuse, and 187 or 1.1 percent of the reports were related to allegations of emotional abuse.

**TABLE 1
REPORTS BY REPORTING PERIOD AND TYPE OF MALTREATMENT**

	Neglect	Physical Abuse	Sexual Abuse	Emotional Abuse	Total
April 2006 - September 2006	10,201 60.7%	5,346 31.9%	1,019 6.1%	215 1.3%	16,781 100.0%
October 2006 – March 2007	9,838 59.2%	5,571 33.5%	1,007 6.1%	196 1.2%	16,612 100.0%
April 2007 – September 2007	10,922 60.4%	5,836 32.3%	1,108 6.1%	212 1.2%	18,078 100.0%
October 2007 – March 2008	10,449 59.2%	6,005 34.1%	980 5.6%	194 1.1%	17,628 100.0%
April 2008 – September 2008	10,539 60.2%	5,737 32.8%	1,028 5.9%	189 1.1%	17,493 100.0%
October 2008 – March 2009	9,845 57.6%	6,064 35.5%	975 5.7%	210 1.2%	17,094 100.0%
April 2009 – September 2009	9,666 59.9%	5,372 33.3%	919 5.7%	177 1.1%	16,134 100.0%
October 2009 – March 2010	10,127 59.2%	5,866 34.3%	930 5.4%	187 1.1%	17,110 100.0%

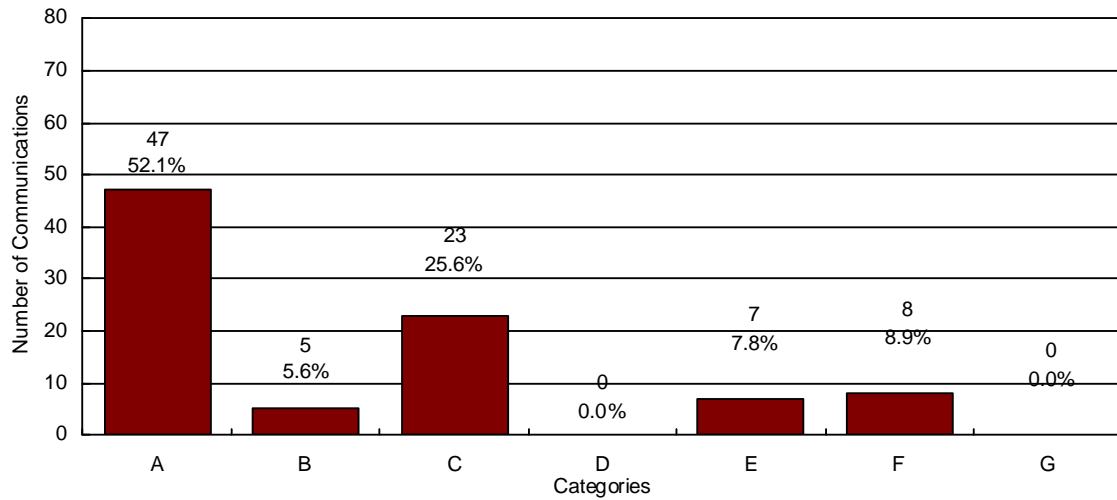
Chart 1 shows that the number of CPS reports received by the CPS Hotline has increased over the past year. Comparing the current reporting period to the prior reporting period, the number of reports received increased by 976 reports or 6.0 percent.

CHART 1
REPORTS OF CHILD ABUSE AND NEGLECT BY REPORTING PERIOD



In addition to the 17,110 reports during the current reporting period, the Child Abuse Hotline received 11,229 communications that did not meet the statutory criteria of a report of maltreatment. A random sample of these communications is contained in the chart below.

CHART 2
SAMPLE OF COMMUNICATIONS TO THE CHILD ABUSE HOTLINE THAT DO NOT MEET THE STATUTORY REQUIREMENTS OF A REPORT OF ABUSE OR NEGLECT



N=90

- A = Concern Only/No Allegation of Child Abuse or Neglect**
- B = Out of CPS Jurisdiction**
- C = Call Appropriate for Law Enforcement Jurisdiction²**
- D = Non-Caretaker Neglect/Child No Longer at Risk**
- E = Insufficient Information**
- F = Truancy/Custody Issues**
- G = Current Case Questions or Referrals**

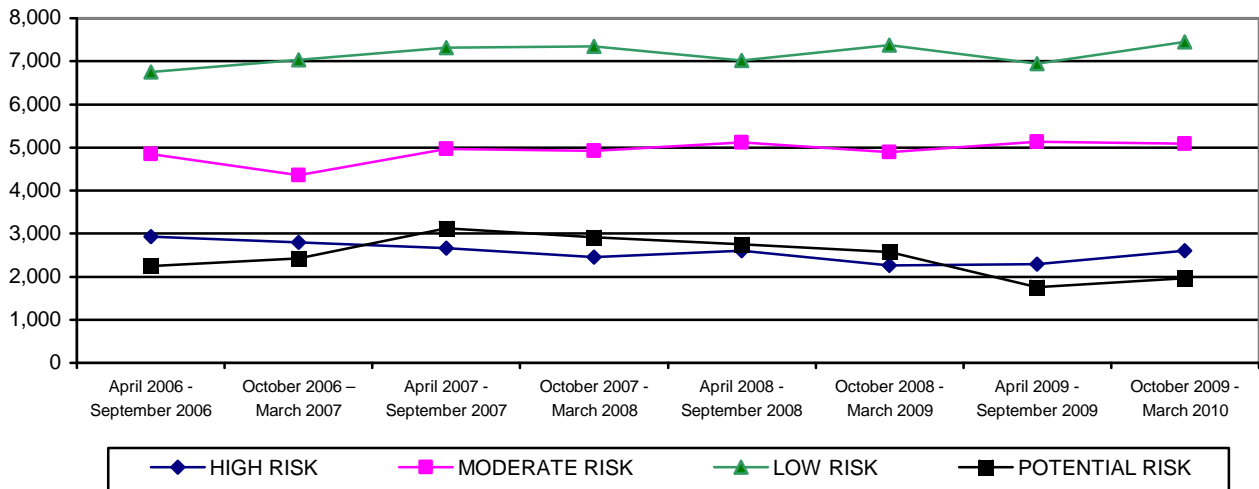
All communications that do not meet the statutory requirements for a field investigation of abuse or neglect are reviewed within 48 hours by DES quality assurance staff.

² The category “Call Appropriate for Law Enforcement Jurisdiction” refers to a situation where the alleged perpetrator is not a parent or primary caretaker and the allegations, if true, would constitute a crime.

For the current reporting period, the CPS Hotline classified 15.2 percent of the reports received as high risk, 29.7 percent as moderate risk, 43.6 percent as low risk, and 11.5 percent as potential risk.

For the current reporting period, the CPS Hotline classified 1.1 percent of CPS reports as emotional abuse, 59.2 percent as neglect, 34.3 percent as physical abuse, and 5.4 percent as sexual abuse.

**CHART 3
NUMBER OF REPORTS RECEIVED BY RISK LEVEL**



**TABLE 2
NUMBER OF REPORTS RECEIVED BY RISK LEVEL AND COUNTY FOR PERIOD OF
OCTOBER 1, 2009 THROUGH MARCH 31, 2010**

COUNTY	HIGH	MODERATE	LOW	POTENTIAL	TOTAL	% OF TOTAL
APACHE	12	21	30	6	69	0.4%
COCHISE	54	132	187	38	411	2.4%
COCONINO	42	102	129	48	321	1.9%
GILA	19	15	31	10	75	0.4%
GRAHAM	19	36	28	3	86	0.5%
GREENLEE	2	3	5	2	12	0.1%
LA PAZ	9	24	26	5	64	0.4%
MARICOPA	1,615	2,924	4,310	1,163	10,012	58.5%
MOHAVE	78	177	222	57	534	3.1%
NAVAJO	41	88	118	27	274	1.6%
PIMA	414	913	1,496	351	3,174	18.6%
PINAL	167	337	473	125	1,102	6.4%
SANTA CRUZ	9	17	32	10	68	0.4%
YAVAPAI	63	167	212	76	518	3.0%
YUMA	64	126	157	43	390	2.3%
STATEWIDE	2,608	5,082	7,456	1,964	17,110	100.0%
% OF TOTAL	15.2%	29.7%	43.6%	11.5%	100.0%	

TABLE 3
NUMBER OF REPORTS RECEIVED BY RISK LEVEL AND COUNTY FOR PERIOD OF
APRIL 1, 2009 THROUGH SEPTEMBER 30, 2009

COUNTY	HIGH	MODERATE	LOW	POTENTIAL	TOTAL	% OF TOTAL
APACHE	11	25	32	7	75	0.5%
COCHISE	51	141	202	42	436	2.7%
COCONINO	53	111	157	42	363	2.3%
GILA	11	22	38	9	80	0.5%
GRAHAM	14	37	33	13	97	0.6%
GREENLEE	2	6	7	1	16	0.1%
LA PAZ	3	12	17	3	35	0.2%
MARICOPA	1,424	3,006	4,052	1,024	9,506	58.9%
MOHAVE	78	174	263	39	554	3.4%
NAVAJO	40	80	109	24	253	1.6%
PIMA	365	939	1,244	325	2,873	17.8%
PINAL	153	308	405	136	1,002	6.2%
SANTA CRUZ	0	0	2	1	3	<0.1%
YAVAPAI	45	164	220	51	480	3.0%
YUMA	47	111	161	42	361	2.2%
STATEWIDE	2,297	5,136	6,942	1,759	16,134	100.0%
% OF TOTAL	14.2%	31.9%	43.0%	10.9%	100.0%	

CHART 4
NUMBER OF REPORTS RECEIVED BY TYPE OF MALTREATMENT

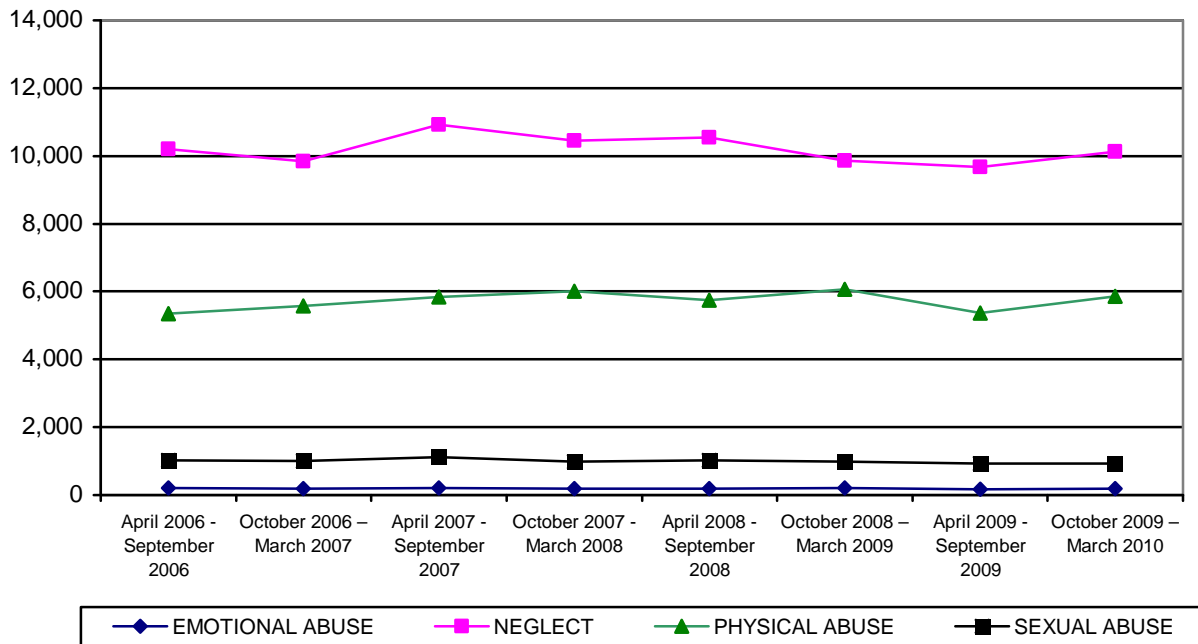


TABLE 4
NUMBER OF REPORTS RECEIVED BY TYPE OF MALTREATMENT AND COUNTY FOR
PERIOD OF OCTOBER 1, 2009 THROUGH MARCH 31, 2010

COUNTY	EMOTIONAL ABUSE	NEGLECT	PHYSICAL ABUSE	SEXUAL ABUSE	TOTAL	% OF TOTAL
APACHE	0	41	25	3	69	0.4%
COCHISE	3	253	143	12	411	2.4%
COCONINO	3	179	124	15	321	1.9%
GILA	0	48	24	3	75	0.4%
GRAHAM	1	60	18	7	86	0.5%
GREENLEE	0	7	4	1	12	0.1%
LA PAZ	1	37	19	7	64	0.4%
MARICOPA	98	5,846	3,496	572	10,012	58.5%
MOHAVE	5	326	185	18	534	3.1%
NAVAJO	3	165	89	17	274	1.6%
PIMA	52	1,919	1,049	154	3,174	18.6%
PINAL	13	617	404	68	1,102	6.4%
SANTA CRUZ	0	34	32	2	68	0.4%
YAVAPAI	6	338	145	29	518	3.0%
YUMA	2	257	109	22	390	2.3%
STATEWIDE	187	10,127	5,866	930	17,110	100.0%
% OF TOTAL	1.1%	59.2%	34.3%	5.4%	100.0%	

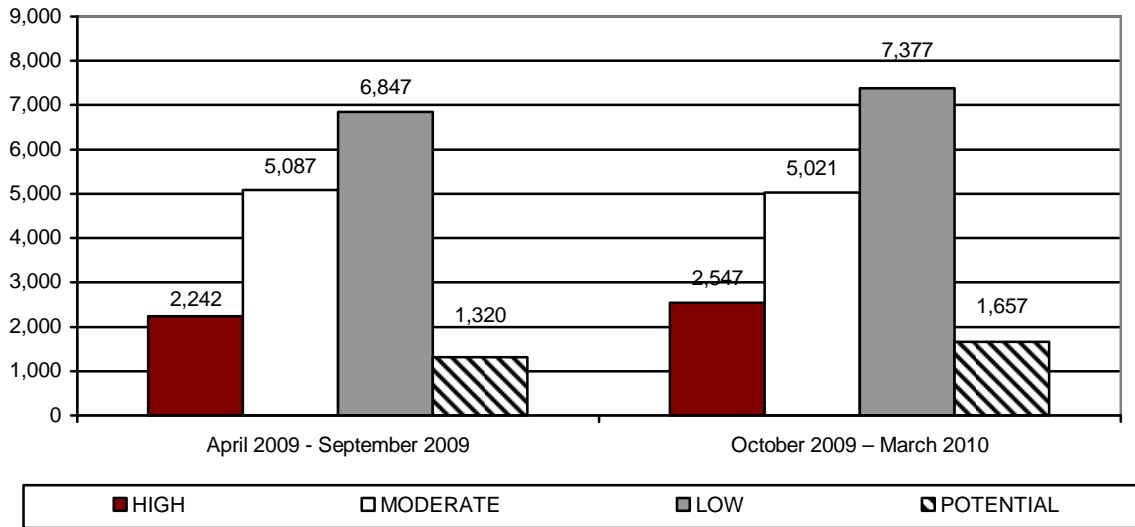
TABLE 5
NUMBER OF REPORTS RECEIVED BY TYPE OF MALTREATMENT AND COUNTY FOR
PERIOD OF APRIL 1, 2009 THROUGH SEPTEMBER 30, 2009

COUNTY	EMOTIONAL ABUSE	NEGLECT	PHYSICAL ABUSE	SEXUAL ABUSE	TOTAL	% OF TOTAL
APACHE	0	44	20	11	75	0.5%
COCHISE	9	257	149	21	436	2.7%
COCONINO	5	217	123	18	363	2.3%
GILA	0	51	20	9	80	0.5%
GRAHAM	0	59	33	5	97	0.6%
GREENLEE	0	11	5	0	16	0.1%
LA PAZ	1	20	12	2	35	0.2%
MARICOPA	102	5,600	3,271	533	9,506	58.9%
MOHAVE	5	345	174	30	554	3.4%
NAVAJO	2	162	75	14	253	1.6%
PIMA	31	1,743	918	181	2,873	17.8%
PINAL	8	628	319	47	1,002	6.2%
SANTA CRUZ	0	2	1	0	3	<0.1%
YAVAPAI	11	295	146	28	480	3.0%
YUMA	3	232	106	20	361	2.2%
STATEWIDE	177	9,666	5,372	919	16,134	100.0%
% OF TOTAL	1.1%	59.9%	33.3%	5.7%	100.0%	

ASSIGNMENT OF INVESTIGATIONS

During the reporting period, there were 17,110 calls to the hotline that met the statutory criteria for a report. Of those, 220 reports fell within the jurisdiction of military or tribal governments and 288 reports were not investigated. This left 16,602 reports that were assigned to be investigated by CPS. The following tables and charts in this section provide statewide and county level information on these reports.

**CHART 5
NUMBER OF REPORTS ASSIGNED FOR INVESTIGATION BY RISK LEVEL AND REPORTING PERIOD**



**TABLE 6
NUMBER OF REPORTS ASSIGNED FOR INVESTIGATION BY RISK LEVEL AND COUNTY FOR PERIOD OF OCTOBER 1, 2009 THROUGH MARCH 31, 2010**

COUNTY	HIGH	MODERATE	LOW	POTENTIAL	TOTAL	% OF TOTAL
APACHE	7	13	22	2	44	0.3%
COCHISE	54	131	187	34	406	2.5%
COCONINO	38	92	103	36	269	1.6%
GILA	13	13	31	9	66	0.4%
GRAHAM	16	36	28	2	82	0.5%
GREENLEE	2	3	5	2	12	0.1%
LA PAZ	6	22	20	3	51	0.3%
MARICOPA	1,604	2,913	4,293	1,000	9,810	59.1%
MOHAVE	73	175	221	47	516	3.1%
NAVAJO	32	78	108	21	239	1.4%
PIMA	412	909	1,492	289	3,102	18.7%
PINAL	157	326	468	102	1,053	6.3%
SANTA CRUZ	9	17	32	8	66	0.4%
YAVAPAI	61	167	211	66	505	3.0%
YUMA	63	126	156	36	381	2.3%
STATEWIDE	2,547	5,021	7,377	1,657	16,602	100.0%
% OF TOTAL	15.3%	30.2%	44.5%	10.0%	100.0%	

**TABLE 7
NUMBER OF REPORTS ASSIGNED FOR INVESTIGATION BY RISK LEVEL AND COUNTY
FOR PERIOD OF APRIL 1, 2009 THROUGH SEPTEMBER 30, 2010**

COUNTY	HIGH	MODERATE	LOW	POTENTIAL	TOTAL	% OF TOTAL
APACHE	6	19	21	5	51	0.3%
COCHISE	51	141	202	31	425	2.7%
COCONINO	39	99	130	23	291	1.9%
GILA	11	21	37	8	77	0.5%
GRAHAM	14	37	31	10	92	0.6%
GREENLEE	2	6	7	0	15	0.1%
LA PAZ	1	10	12	3	26	0.1%
MARICOPA	1,413	3,000	4,042	774	9,229	59.6%
MOHAVE	76	172	261	26	535	3.5%
NAVAJO	29	75	95	18	217	1.4%
PIMA	365	936	1,237	257	2,795	18.0%
PINAL	143	299	391	100	933	6.0%
SANTA CRUZ	0	0	2	0	2	<0.1%
YAVAPAI	45	162	218	32	457	3.0%
YUMA	47	110	161	33	351	2.3%
STATEWIDE	2,242	5,087	6,847	1,320	15,496	100.0%
% OF TOTAL	14.5%	32.8%	44.2%	8.5%	100.0%	

**CHART 6
NUMBER OF REPORTS ASSIGNED FOR INVESTIGATION BY TYPE OF MALTREATMENT
AND REPORTING PERIOD**

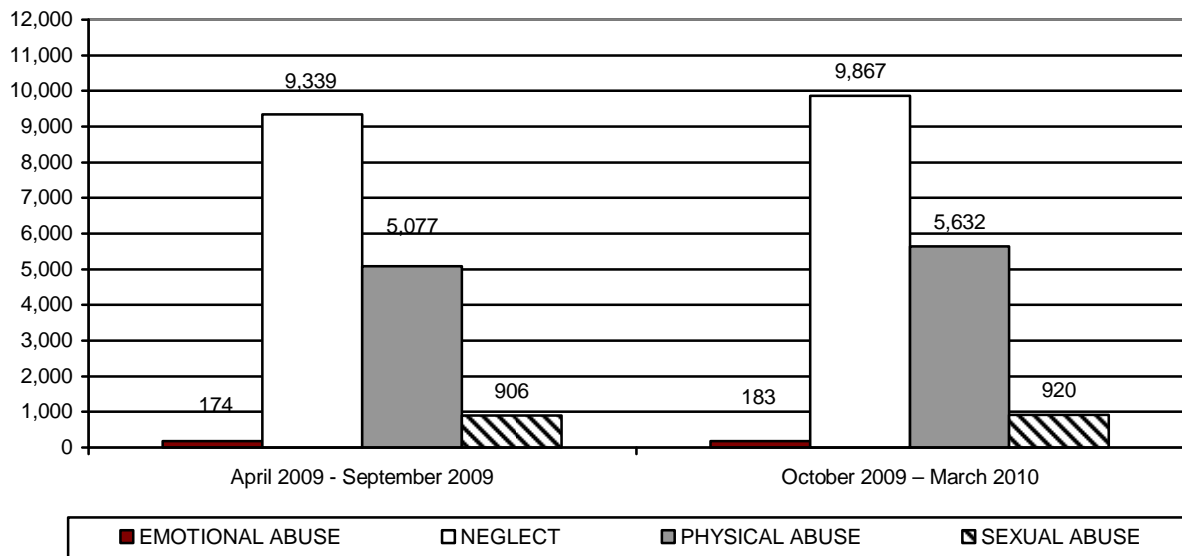


TABLE 8
NUMBER OF REPORTS ASSIGNED FOR INVESTIGATION BY TYPE OF MALTREATMENT
BY COUNTY FOR PERIOD OF OCTOBER 1, 2009 THROUGH MARCH 31, 2010

COUNTY	EMOTIONAL ABUSE	NEGLECT	PHYSICAL ABUSE	SEXUAL ABUSE	TOTAL	% OF TOTAL
APACHE	0	26	17	1	44	0.3%
COCHISE	3	252	139	12	406	2.5%
COCONINO	0	151	105	13	269	1.6%
GILA	0	40	23	3	66	0.4%
GRAHAM	1	56	18	7	82	0.5%
GREENLEE	0	7	4	1	12	0.1%
LA PAZ	1	27	16	7	51	0.3%
MARICOPA	97	5,767	3,377	569	9,810	59.1%
MOHAVE	5	315	178	18	516	3.1%
NAVAJO	3	141	79	16	239	1.4%
PIMA	52	1,880	1,016	154	3,102	18.7%
PINAL	13	588	386	66	1,053	6.3%
SANTA CRUZ	0	33	31	2	66	0.4%
YAVAPAI	6	330	140	29	505	3.0%
YUMA	2	254	103	22	381	2.3%
STATEWIDE	183	9,867	5,632	920	16,602	100.0%
% OF TOTAL	1.1%	59.5%	33.9%	5.5%	100.0%	

TABLE 9
NUMBER OF REPORTS ASSIGNED FOR INVESTIGATION BY TYPE OF MALTREATMENT
BY COUNTY FOR PERIOD OF APRIL 1, 2009 THROUGH SEPTEMBER 30, 2009

COUNTY	EMOTIONAL ABUSE	NEGLECT	PHYSICAL ABUSE	SEXUAL ABUSE	TOTAL	% OF TOTAL
APACHE	0	33	13	5	51	0.3%
COCHISE	9	253	142	21	425	2.7%
COCONINO	4	177	95	15	291	1.9%
GILA	0	48	20	9	77	0.5%
GRAHAM	0	54	33	5	92	0.6%
GREENLEE	0	11	4	0	15	0.1%
LA PAZ	0	16	8	2	26	0.2%
MARICOPA	101	5,466	3,131	531	9,229	59.5%
MOHAVE	5	338	162	30	535	3.5%
NAVAJO	2	138	63	14	217	1.4%
PIMA	31	1,704	879	181	2,795	18.0%
PINAL	8	590	289	46	933	6.0%
SANTA CRUZ	0	2	0	0	2	<0.1%
YAVAPAI	11	282	136	28	457	3.0%
YUMA	3	227	102	19	351	2.3%
STATEWIDE	174	9,339	5,077	906	15,496	100.0%
% OF TOTAL	1.1%	60.2%	32.8%	5.9%	100.0%	

During this reporting period, there were 16,602 reports assigned for investigation. Of these, CPS completed 8,149 investigations or 49.1 percent. Investigations not completed remain open when the investigation is still in process, when the CPS specialist is waiting for the results of a law enforcement investigation and/or receipt of records that impact the investigation finding, or when the investigation has been completed but is awaiting supervisory review and approval.

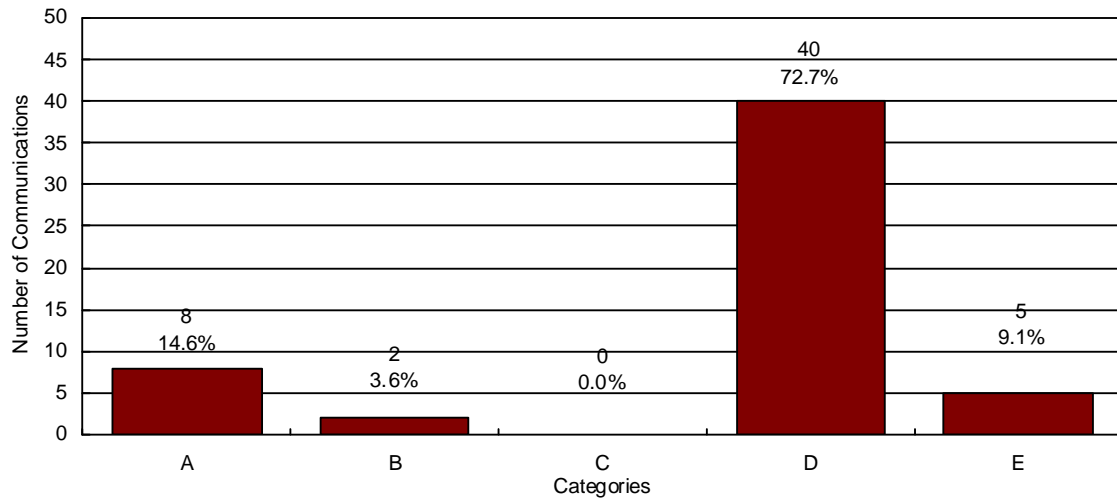
INVESTIGATIONS OF CHILD ABUSE AND NEGLECT

**TABLE 10
NUMBER OF REPORTS NOT RESPONDED TO BY RISK LEVEL AND COUNTY FOR
PERIOD OF OCTOBER 1, 2009 THROUGH MARCH 31, 2010**

COUNTY	HIGH	MODERATE	LOW	POTENTIAL	TOTAL	% OF TOTAL
APACHE	0	0	0	1	1	0.4%
COCHISE	0	0	0	4	4	1.4%
COCONINO	0	0	1	6	7	2.4%
GILA	0	0	0	1	1	0.4%
GRAHAM	0	0	0	1	1	0.4%
GREENLEE	0	0	0	0	0	0.0%
LA PAZ	0	0	0	0	0	0.0%
MARICOPA	0	0	2	162	164	56.9%
MOHAVE	0	0	0	9	9	3.1%
NAVAJO	0	0	0	3	3	1.0%
PIMA	0	0	0	60	60	20.8%
PINAL	0	0	0	19	19	6.6%
SANTA CRUZ	0	0	0	2	2	0.7%
YAVAPAI	0	0	0	10	10	3.5%
YUMA	0	0	0	7	7	2.4%
STATEWIDE	0	0	3	285	288	100.0%
% OF TOTAL	0.0%	0.0%	1.0%	99.0%	100.0%	

By statute, a random sample of reports not responded to for the period is required. For the current reporting period there were 288 reports that were not responded to. A random sample of 55 reports not responded to were reviewed. Chart 7 displays the 55 reports in brief descriptive categories.

CHART 7
NUMBER OF REPORTS NOT RESPONDED TO BY CATEGORY FOR THE PERIOD OF
OCTOBER 1, 2009 THROUGH MARCH 31, 2010



N=55

- A= Adolescent, Past abuse, No current Injuries**
- B= Inadequate Housekeeping Standards**
- C= Inappropriate Vehicle Operation**
- D= No Specific Allegations**
- E= Past abuse no current injuries**

CHART 8
NUMBER OF REPORTS ASSIGNED FOR INVESTIGATION BY RISK LEVEL AND
REPORTING PERIOD FOR REPORTS STILL OPEN FOR INVESTIGATION

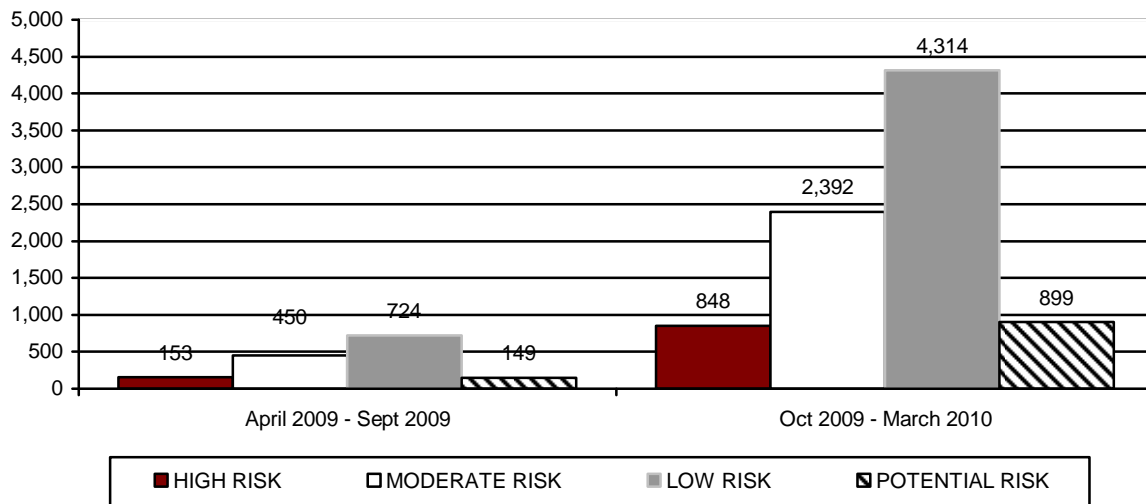


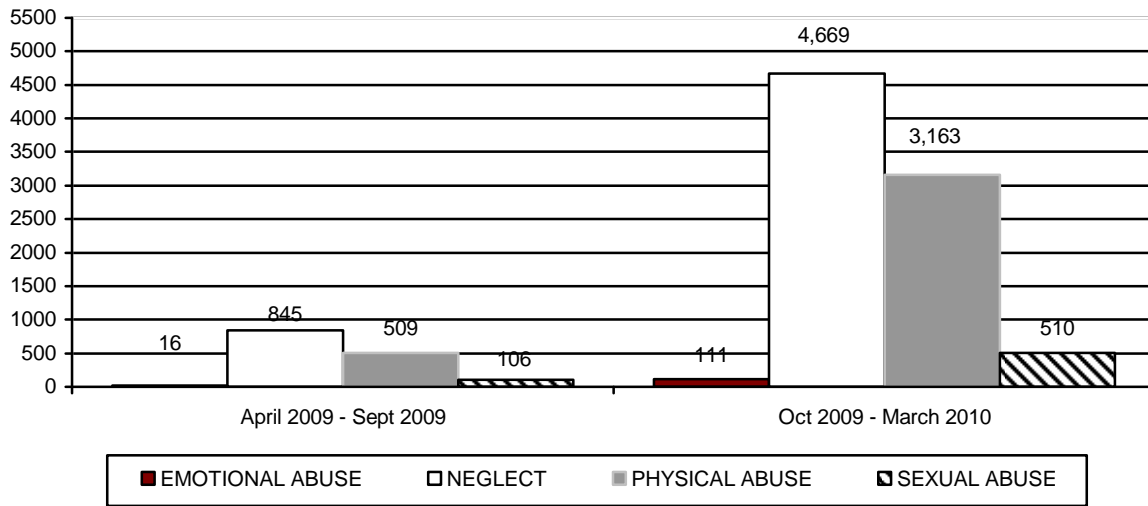
TABLE 11
NUMBER OF REPORTS BY RISK LEVEL AND COUNTY FOR REPORTS STILL OPEN FOR
INVESTIGATION FOR PERIOD OF OCTOBER 1, 2009 THROUGH MARCH 31, 2010

COUNTY	HIGH	MODERATE	LOW	POTENTIAL	TOTAL	% OF TOTAL
APACHE	2	5	16	0	23	0.3%
COCHISE	20	75	124	24	243	2.9%
COCONINO	10	40	52	16	118	1.4%
GILA	3	2	9	3	17	0.2%
GRAHAM	8	30	26	2	66	0.8%
GREENLEE	2	3	3	2	10	0.1%
LA PAZ	2	12	9	1	24	0.3%
MARICOPA	474	1,238	2,282	478	4,472	52.9%
MOHAVE	21	88	142	28	279	3.3%
NAVAJO	13	43	83	14	153	1.8%
PIMA	133	425	905	195	1,658	19.6%
PINAL	94	257	407	72	830	9.8%
SANTA CRUZ	5	14	31	6	56	0.7%
YAVAPAI	29	91	133	38	291	3.4%
YUMA	32	69	92	20	213	2.5%
STATEWIDE	848	2,392	4,314	899	8,453	100.0%
% OF TOTAL	10.0%	28.3%	51.1%	10.6%	100.0%	

TABLE 12
NUMBER OF REPORTS BY RISK LEVEL AND COUNTY FOR REPORTS STILL OPEN FOR
INVESTIGATION FOR PERIOD OF APRIL 1, 2009 THROUGH SEPTEMBER 30, 2009

COUNTY	HIGH	MODERATE	LOW	POTENTIAL	TOTAL	% OF TOTAL
APACHE	1	4	2	0	7	0.5%
COCHISE	11	23	34	7	75	5.1%
COCONINO	3	8	3	2	16	1.1%
GILA	1	2	3	0	6	0.4%
GRAHAM	3	3	1	1	8	0.5%
GREENLEE	0	0	1	0	1	0.1%
LA PAZ	0	0	0	0	0	0.0%
MARICOPA	44	114	165	34	357	24.2%
MOHAVE	3	1	5	1	10	0.7%
NAVAJO	6	15	26	4	51	3.5%
PIMA	30	138	271	58	497	33.5%
PINAL	47	120	189	39	395	26.8%
SANTA CRUZ	0	1	2	0	3	0.2%
YAVAPAI	4	17	17	2	40	2.7%
YUMA	0	4	5	1	10	0.7%
STATEWIDE	153	450	724	149	1,476	100.0%
% OF TOTAL	10.4%	30.5%	49.0%	10.1%	100.0%	

**CHART 9
NUMBER OF REPORTS ASSIGNED FOR INVESTIGATION BY TYPE OF MALTREATMENT
FOR REPORTS STILL OPEN FOR INVESTIGATION**



**TABLE 13
NUMBER OF REPORTS BY TYPE OF MALTREATMENT AND COUNTY FOR REPORTS
STILL OPEN FOR INVESTIGATION FOR PERIOD OF
OCTOBER 1, 2009 THROUGH MARCH 31, 2010**

COUNTY	EMOTIONAL ABUSE	NEGLECT	PHYSICAL ABUSE	SEXUAL ABUSE	TOTAL	% OF TOTAL
APACHE	0	15	8	0	23	0.3%
COCHISE	2	143	91	7	243	2.9%
COCONINO	0	59	53	6	118	1.4%
GILA	0	12	4	1	17	0.2%
GRAHAM	1	46	15	4	66	0.8%
GREENLEE	0	7	2	1	10	0.1%
LA PAZ	0	10	9	5	24	0.3%
MARICOPA	49	2,408	1,731	284	4,472	52.9%
MOHAVE	4	165	99	11	279	3.3%
NAVAJO	3	85	53	12	153	1.8%
PIMA	35	944	595	84	1,658	19.6%
PINAL	13	430	328	59	830	9.8%
SANTA CRUZ	0	26	29	1	56	0.7%
YAVAPAI	2	183	89	17	291	3.4%
YUMA	2	136	57	18	213	2.5%
STATEWIDE	111	4,669	3,163	510	8,453	100.0%
% OF TOTAL	1.3%	55.3%	37.4%	6.0%	100.0%	

TABLE 14
NUMBER OF REPORTS BY TYPE OF MALTREATMENT AND COUNTY FOR REPORTS
STILL OPEN FOR INVESTIGATION FOR PERIOD OF
APRIL 1, 2009 THROUGH SEPTEMBER 30, 2009

COUNTY	EMOTIONAL ABUSE	NEGLECT	PHYSICAL ABUSE	SEXUAL ABUSE	TOTAL	% OF TOTAL
APACHE	0	5	0	2	7	0.5%
COCHISE	0	45	22	8	75	5.1%
COCONINO	0	7	8	1	16	1.1%
GILA	0	6	0	0	6	0.4%
GRAHAM	0	6	2	0	8	0.5%
GREENLEE	0	0	1	0	1	0.1%
LA PAZ	0	0	0	0	0	0.0%
MARICOPA	1	200	131	25	357	24.2%
MOHAVE	0	6	3	1	10	0.7%
NAVAJO	1	25	21	4	51	3.5%
PIMA	9	270	176	42	497	33.5%
PINAL	3	243	132	17	395	26.8%
SANTA CRUZ	1	1	1	0	3	0.2%
YAVAPAI	1	24	9	6	40	2.7%
YUMA	0	7	3	0	10	0.7%
STATEWIDE	16	845	509	106	1,476	100.0%
% OF TOTAL	1.1%	57.2%	34.5%	7.2%	100.0%	

**CHART 10
NUMBER OF REPORTS ASSIGNED FOR INVESTIGATION WHERE A REMOVAL OCCURRED**

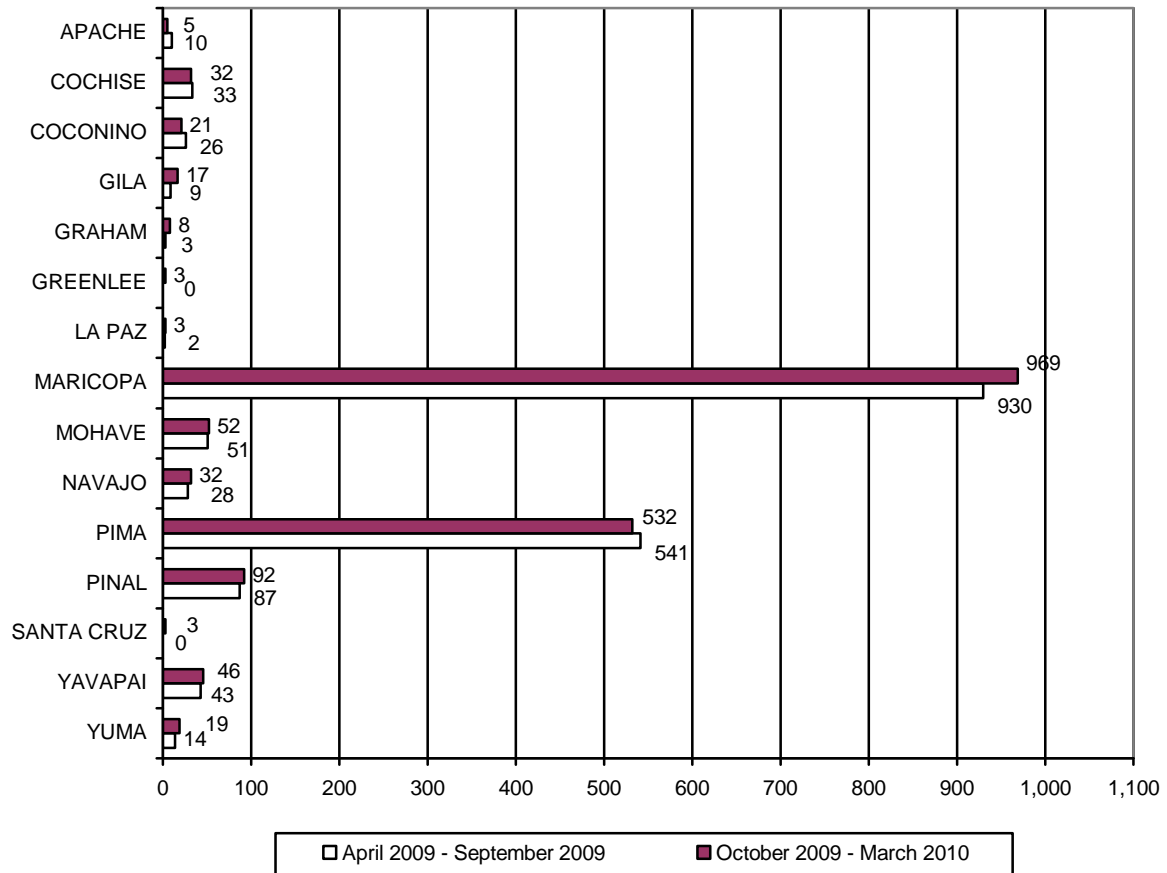


TABLE 15
NUMBER OF REPORTS ASSIGNED FOR INVESTIGATION BY COUNTY WHERE A
REMOVAL OCCURRED FOR THE PERIOD OCTOBER 1, 2009 THROUGH MARCH 31, 2010

COUNTY	NUMBER OF REPORTS ASSIGNED	NUMBER OF REPORTS ASSIGNED WITH A REMOVAL	% OF REPORTS WHERE A CHILD WAS PLACED IN OUT-OF-HOME CARE
APACHE	44	5	11.4%
COCHISE	406	32	7.9%
COCONINO	269	21	7.8%
GILA	66	17	25.8%
GRAHAM	82	8	9.8%
GREENLEE	12	3	25.0%
LA PAZ	51	3	5.9%
MARICOPA	9,810	969	9.9%
MOHAVE	516	52	10.1%
NAVAJO	239	32	13.4%
PIMA	3,102	532	17.2%
PINAL	1,053	92	8.7%
SANTA CRUZ	66	3	4.6%
YAVAPAI	505	46	9.1%
YUMA	381	19	5.0%
STATEWIDE	16,602	1,834	11.0%

TABLE 16
NUMBER OF REPORTS ASSIGNED FOR INVESTIGATION BY COUNTY WHERE A
REMOVAL OCCURRED FOR THE PERIOD APRIL 1, 2009 THROUGH SEPTEMBER 30, 2009

COUNTY	NUMBER OF REPORTS ASSIGNED	NUMBER OF REPORTS ASSIGNED WITH A REMOVAL	% OF REPORTS WHERE A CHILD WAS PLACED IN OUT-OF-HOME CARE
APACHE	51	10	19.6%
COCHISE	425	33	7.8%
COCONINO	291	26	8.9%
GILA	77	9	11.7%
GRAHAM	92	3	3.3%
GREENLEE	15	0	0.0%
LA PAZ	26	2	7.7%
MARICOPA	9,229	930	10.1%
MOHAVE	535	51	9.5%
NAVAJO	217	28	12.9%
PIMA	2,795	541	19.4%
PINAL	933	87	9.3%
SANTA CRUZ	2	0	0.0%
YAVAPAI	457	43	9.4%
YUMA	351	14	4.0%
STATEWIDE	15,496	1,777	11.5%

COMPLETED INVESTIGATIONS

Substantiated reports are reports where the Department has determined that at least one of the allegations in the report of abuse and neglect is true. The number of reports that are considered substantiated are a subset of the total number of reports that were received, investigated, and closed during the reporting period.

The preliminary number of CPS reports that are substantiated for this reporting period is 1,311. For the prior reporting period, the number of CPS reports that were assigned for investigation that resulted in substantiated findings was revised from 902 to 1,296 to reflect subsequent decisions based on parents’ rights to due process. For the current reporting period, 44.7 percent of substantiated investigative findings were classified as high risk, 30.1 percent as moderate risk, 20.7 percent as low risk, and 4.5 percent as potential risk. Prior to October 1, 2009 potential risk reports were not substantiated by CPS. For the prior reporting period, 29.4 percent of substantiated investigative findings were classified as high risk, 39.6 percent as moderate risk, and 31.0 percent as low risk.

- There were 16,602 reports received during the current reporting period that were subject to substantiation. This results in a preliminary substantiation rate of 8 percent for the current reporting period.
- There were 14,186 reports received during the prior reporting period that were subject to substantiation. This results in a 9 percent substantiation rate for the prior reporting period.

**CHART 11
SUBSTANTIATION RATE BY REPORTING PERIOD**

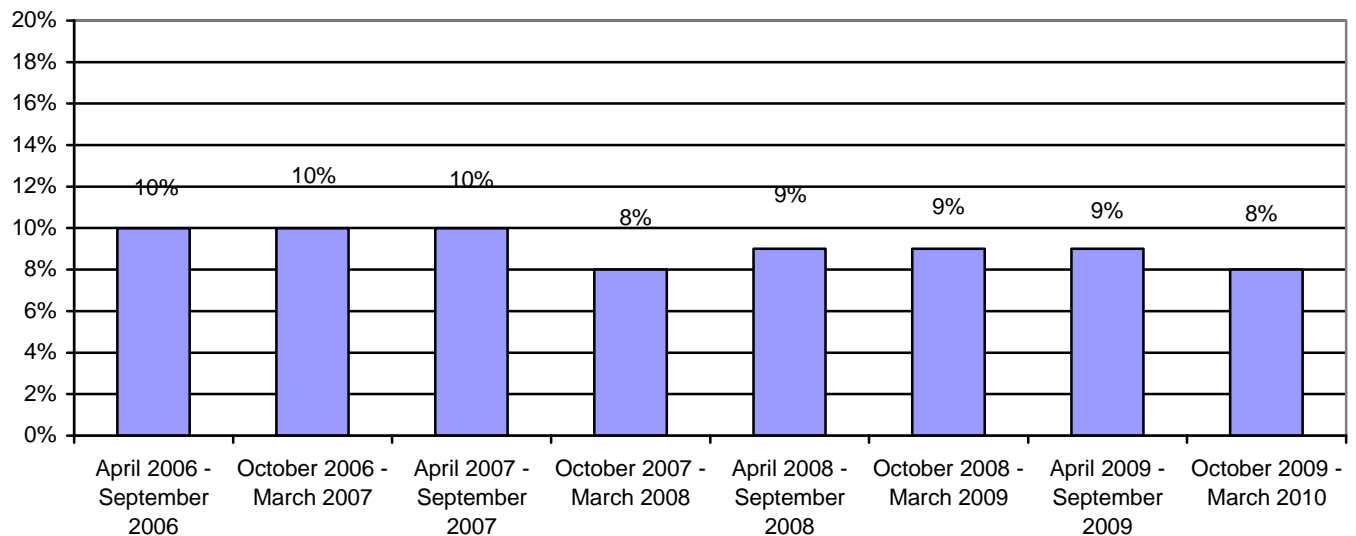


CHART 12
NUMBER OF REPORTS ASSIGNED FOR INVESTIGATION BY RISK LEVEL AND REPORTING PERIOD THAT RESULTED IN PROPOSED SUBSTANTIATION

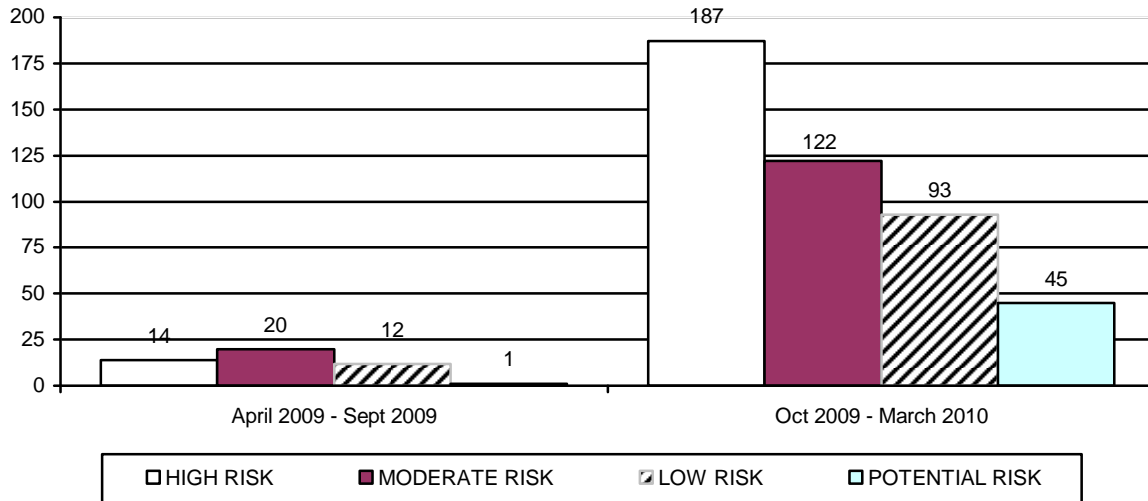


TABLE 17
NUMBER OF REPORTS ASSIGNED FOR INVESTIGATION BY RISK LEVEL AND COUNTY THAT RESULTED IN PROPOSED SUBSTANTIATION FOR PERIOD OF OCTOBER 1, 2009 THROUGH MARCH 31, 2010

COUNTY	HIGH	MODERATE	LOW	POTENTIAL	TOTAL	% OF TOTAL
APACHE	0	0	1	1	2	0.5%
COCHISE	3	1	1	0	5	1.1%
COCONINO	2	3	3	0	8	1.8%
GILA	3	3	4	0	10	2.2%
GRAHAM	3	0	0	0	3	0.7%
GREENLEE	0	0	0	0	0	0.0%
LA PAZ	1	0	0	0	1	0.2%
MARICOPA	135	69	56	39	299	66.7%
MOHAVE	8	4	4	0	16	3.6%
NAVAJO	2	1	0	0	3	0.7%
PIMA	13	31	15	2	61	13.7%
PINAL	11	5	3	1	20	4.5%
SANTA CRUZ	0	0	0	0	0	0.0%
YAVAPAI	5	4	4	2	15	3.4%
YUMA	1	1	2	0	4	0.9%
STATEWIDE	187	122	93	45	447	100.0%
% OF TOTAL	41.8%	27.3%	20.8%	10.1%	100.0%	

TABLE 18
NUMBER OF REPORTS ASSIGNED FOR INVESTIGATION BY RISK LEVEL AND COUNTY
THAT RESULTED IN PROPOSED SUBSTANTIATION FOR PERIOD OF
APRIL 1, 2009 THROUGH SEPTEMBER 30, 2009

COUNTY	HIGH	MODERATE	LOW	POTENTIAL	TOTAL	% OF TOTAL
APACHE	0	1	0	0	1	2.1%
COCHISE	0	0	0	0	0	0.0%
COCONINO	0	1	0	0	1	2.1%
GILA	1	0	0	0	1	2.1%
GRAHAM	0	0	0	0	0	0.0%
GREENLEE	0	1	0	0	1	2.1%
LA PAZ	0	0	0	0	0	0.0%
MARICOPA	8	11	9	0	28	59.7%
MOHAVE	1	2	0	0	3	6.4%
NAVAJO	2	0	0	0	2	4.3%
PIMA	1	3	1	0	5	10.6%
PINAL	1	1	1	1	4	8.5%
SANTA CRUZ	0	0	0	0	0	0.0%
YAVAPAI	0	0	0	0	0	0.0%
YUMA	0	0	1	0	1	2.1%
STATEWIDE	14	20	12	1	47	100.0%
% OF TOTAL	29.8%	42.6%	25.5%	2.1%	100.0%	

CHART 13
NUMBER OF REPORTS ASSIGNED FOR INVESTIGATION BY TYPE OF MALTREATMENT
THAT RESULTED IN PROPOSED SUBSTANTIATION

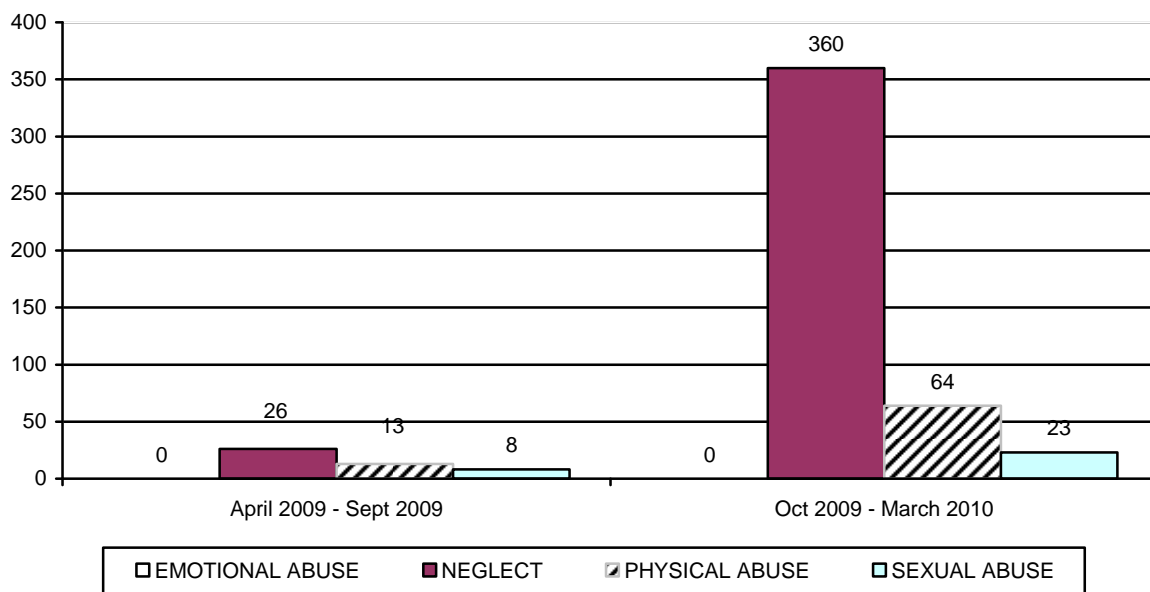


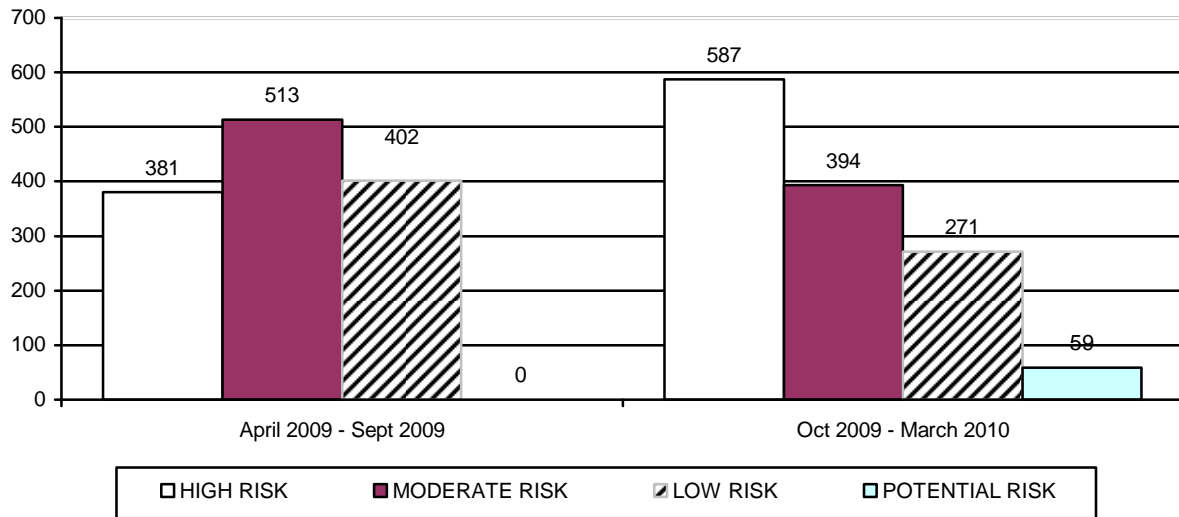
TABLE 19
NUMBER OF REPORTS ASSIGNED FOR INVESTIGATION BY TYPE OF MALTREATMENT
BY COUNTY THAT RESULTED IN PROPOSED SUBSTANTIATION FOR PERIOD OF
OCTOBER 1, 2009 THROUGH MARCH 31, 2010

COUNTY	EMOTIONAL ABUSE	NEGLECT	PHYSICAL ABUSE	SEXUAL ABUSE	TOTAL	% OF TOTAL
APACHE	0	2	0	0	2	0.5%
COCHISE	0	3	0	2	5	1.1%
COCONINO	0	3	4	1	8	1.8%
GILA	0	9	1	0	10	2.2%
GRAHAM	0	3	0	0	3	0.7%
GREENLEE	0	0	0	0	0	0.0%
LA PAZ	0	1	0	0	1	0.2%
MARICOPA	0	251	35	13	299	66.7%
MOHAVE	0	13	3	0	16	3.6%
NAVAJO	0	3	0	0	3	0.7%
PIMA	0	44	11	6	61	13.7%
PINAL	0	17	3	0	20	4.5%
SANTA CRUZ	0	0	0	0	0	0.0%
YAVAPAI	0	9	5	1	15	3.4%
YUMA	0	2	2	0	4	0.9%
STATEWIDE	0	360	64	23	447	100.0%
% OF TOTAL	0.0%	80.5%	14.3%	5.2%	100.0%	

TABLE 20
NUMBER OF REPORTS ASSIGNED FOR INVESTIGATION BY TYPE OF MALTREATMENT
BY COUNTY THAT RESULTED IN PROPOSED SUBSTANTIATION FOR PERIOD OF
APRIL 1, 2009 THROUGH SEPTEMBER 30, 2009

COUNTY	EMOTIONAL ABUSE	NEGLECT	PHYSICAL ABUSE	SEXUAL ABUSE	TOTAL	% OF TOTAL
APACHE	0	0	0	1	1	2.1%
COCHISE	0	0	0	0	0	0.0%
COCONINO	0	0	1	0	1	2.1%
GILA	0	0	1	0	1	2.1%
GRAHAM	0	0	0	0	0	0.0%
GREENLEE	0	0	1	0	1	2.1%
LA PAZ	0	0	0	0	0	0.0%
MARICOPA	0	15	7	6	28	59.7%
MOHAVE	0	3	0	0	3	6.4%
NAVAJO	0	2	0	0	2	4.3%
PIMA	0	4	1	0	5	10.6%
PINAL	0	2	1	1	4	8.5%
SANTA CRUZ	0	0	0	0	0	0.0%
YAVAPAI	0	0	0	0	0	0.0%
YUMA	0	0	1	0	1	2.1%
STATEWIDE	0	26	13	8	47	100.0%
% OF TOTAL	0.0%	55.3%	27.7%	17.0%	100.0%	

**CHART 14
NUMBER OF REPORTS ASSIGNED FOR INVESTIGATION BY RISK LEVEL AND
REPORTING PERIOD THAT RESULTED IN
SUBSTANTIATION**



**TABLE 21
NUMBER OF REPORTS ASSIGNED FOR INVESTIGATION BY RISK LEVEL AND COUNTY
THAT RESULTED IN SUBSTANTIATION FOR PERIOD OF
OCTOBER 1, 2009 THROUGH MARCH 31, 2010**

COUNTY	HIGH	MODERATE	LOW	POTENTIAL	TOTAL	% OF TOTAL
APACHE	0	0	0	0	0	0.0%
COCHISE	12	16	3	0	31	2.4%
COCONINO	3	6	0	0	9	0.7%
GILA	1	0	1	1	3	0.2%
GRAHAM	1	0	0	0	1	0.1%
GREENLEE	0	0	0	0	0	0.0%
LA PAZ	0	1	1	0	2	0.2%
MARICOPA	355	172	121	49	697	53.1%
MOHAVE	24	7	5	1	37	2.8%
NAVAJO	1	1	1	0	3	0.2%
PIMA	142	166	117	1	426	32.5%
PINAL	21	10	11	4	46	3.5%
SANTA CRUZ	0	0	0	0	0	0.0%
YAVAPAI	12	10	10	1	33	2.5%
YUMA	15	5	1	2	23	1.8%
STATEWIDE	587	394	271	59	1,311	100.0%
% OF TOTAL	44.7%	30.1%	20.7%	4.5%	100.0%	

TABLE 22
NUMBER OF REPORTS ASSIGNED FOR INVESTIGATION BY RISK LEVEL AND COUNTY
THAT RESULTED IN SUBSTANTIATION FOR PERIOD OF
APRIL 1, 2009 THROUGH SEPTEMBER 30, 2009

COUNTY	HIGH	MODERATE	LOW	POTENTIAL	TOTAL	% OF TOTAL
APACHE	1	2	2	0	5	0.4%
COCHISE	9	18	9	0	36	2.8%
COCONINO	6	10	5	0	21	1.6%
GILA	1	2	1	0	4	0.3%
GRAHAM	2	1	1	0	4	0.3%
GREENLEE	0	0	0	0	0	0.0%
LA PAZ	0	1	0	0	1	0.1%
MARICOPA	192	231	194	0	617	47.6%
MOHAVE	16	13	14	0	43	3.3%
NAVAJO	3	8	2	0	13	1.0%
PIMA	123	177	129	0	429	33.1%
PINAL	16	17	18	0	51	3.9%
SANTA CRUZ	0	0	0	0	0	0.0%
YAVAPAI	8	22	16	0	46	3.6%
YUMA	4	11	11	0	26	2.0%
STATEWIDE	381	513	402	0	1,296	100.0%
% OF TOTAL	29.4%	39.6%	31.0%	0.0%	100.0%	

CHART 15
NUMBER OF REPORTS ASSIGNED FOR INVESTIGATION BY TYPE OF MALTREATMENT
THAT RESULTED IN SUBSTANTIATION

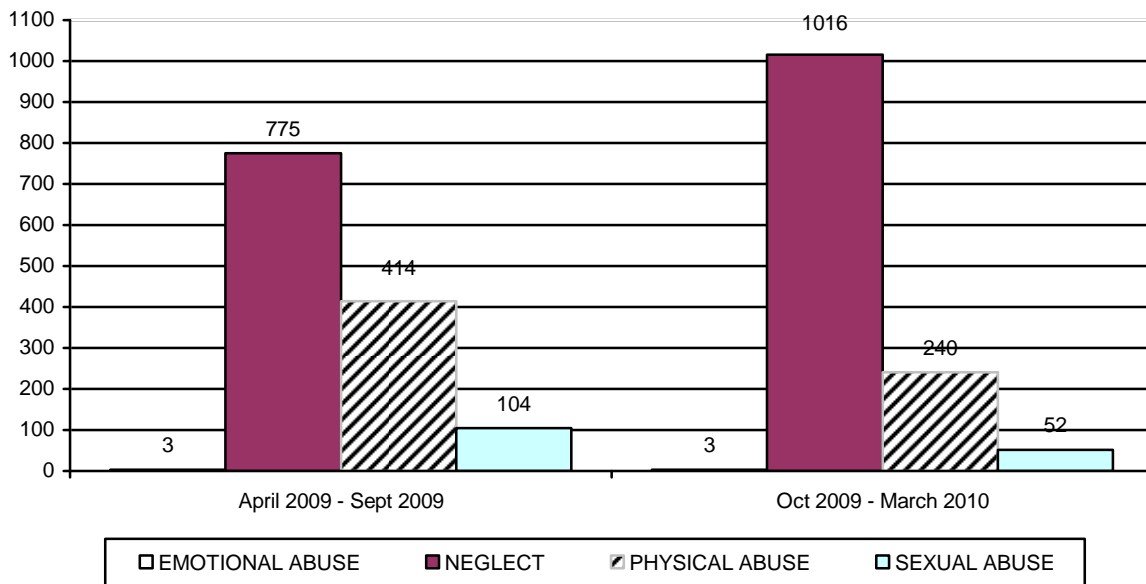


TABLE 23
NUMBER OF REPORTS ASSIGNED FOR INVESTIGATION BY TYPE OF MALTREATMENT
BY COUNTY THAT RESULTED IN SUBSTANTIATION FOR PERIOD OF
OCTOBER 1, 2009 THROUGH MARCH 31, 2010

COUNTY	EMOTIONAL ABUSE	NEGLECT	PHYSICAL ABUSE	SEXUAL ABUSE	TOTAL	% OF TOTAL
APACHE	0	0	0	0	0	0.0%
COCHISE	0	23	6	2	31	2.4%
COCONINO	0	5	4	0	9	0.7%
GILA	0	1	2	0	3	0.2%
GRAHAM	0	1	0	0	1	0.1%
GREENLEE	0	0	0	0	0	0.0%
LA PAZ	0	1	1	0	2	0.2%
MARICOPA	1	542	125	29	697	53.1%
MOHAVE	0	31	6	0	37	2.8%
NAVAJO	0	2	1	0	3	0.2%
PIMA	2	329	77	18	426	32.5%
PINAL	0	35	10	1	46	3.5%
SANTA CRUZ	0	0	0	0	0	0.0%
YAVAPAI	0	26	5	2	33	2.5%
YUMA	0	20	3	0	23	1.8%
STATEWIDE	3	1,016	240	52	1,311	100.0%
% OF TOTAL	0.2%	77.5%	18.3%	4.0%	100.0%	

TABLE 24
NUMBER OF REPORTS ASSIGNED FOR INVESTIGATION BY TYPE OF MALTREATMENT
BY COUNTY THAT RESULTED IN SUBSTANTIATION FOR PERIOD OF
APRIL 1, 2009 THROUGH SEPTEMBER 30, 2009

COUNTY	EMOTIONAL ABUSE	NEGLECT	PHYSICAL ABUSE	SEXUAL ABUSE	TOTAL	% OF TOTAL
APACHE	0	2	2	1	5	0.4%
COCHISE	0	24	11	1	36	2.8%
COCONINO	0	15	4	2	21	1.6%
GILA	0	2	1	1	4	0.3%
GRAHAM	0	3	1	0	4	0.3%
GREENLEE	0	0	0	0	0	0.0%
LA PAZ	0	0	0	1	1	0.1%
MARICOPA	1	300	246	70	617	47.6%
MOHAVE	0	32	8	3	43	3.3%
NAVAJO	0	11	2	0	13	1.0%
PIMA	2	314	96	17	429	33.1%
PINAL	0	27	20	4	51	3.9%
SANTA CRUZ	0	0	0	0	0	0.0%
YAVAPAI	0	27	16	3	46	3.6%
YUMA	0	18	7	1	26	2.0%
STATEWIDE	3	775	414	104	1,296	100.0%

% OF TOTAL	0.2%	59.9%	31.9%	8.0%	100.0%	
------------	------	-------	-------	------	--------	--

The preliminary number of CPS investigations that resulted in an unsubstantiated finding for this reporting period was 6,391. For the prior reporting period, the number of CPS reports that were unsubstantiated was revised from 9,355 to 12,678 to reflect updated information in the CHILDS case management information system. For the prior reporting period, 13.4 percent of unsubstantiated reports were classified as high risk, 32.4 percent as moderate risk, 45.0 percent as low risk, and 9.2 percent as potential risk. Just over one percent of these unsubstantiated reports related to emotional abuse, 60.8 percent to neglect, 32.6 percent to physical abuse, and 5.4 percent to sexual abuse.

CHART 16
NUMBER OF REPORTS ASSIGNED FOR INVESTIGATION BY RISK LEVEL AND REPORTING PERIOD THAT RESULTED IN UNSUBSTANTIATION

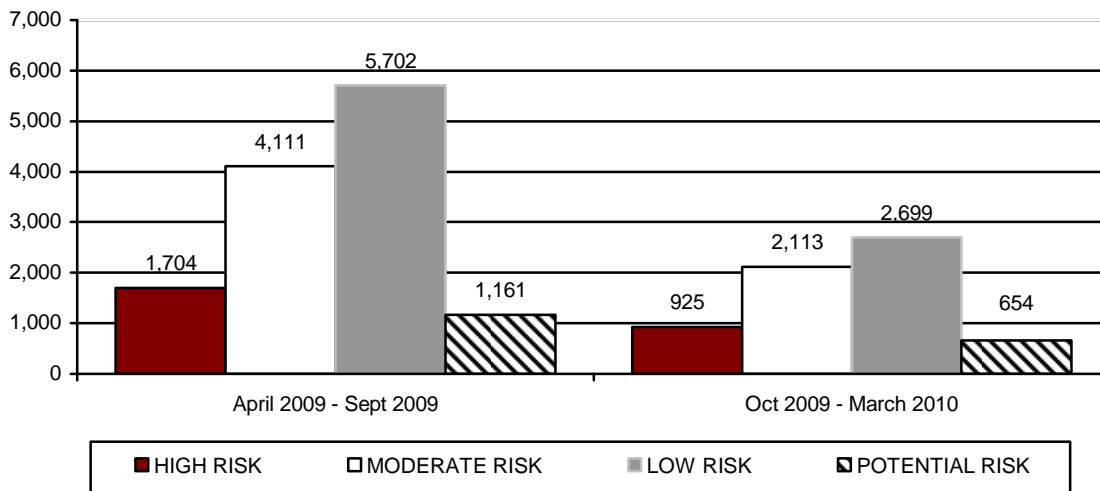


TABLE 25
NUMBER OF REPORTS ASSIGNED FOR INVESTIGATION BY RISK LEVEL AND COUNTY THAT RESULTED IN UNSUBSTANTIATION FOR PERIOD OF OCTOBER 1, 2009 THROUGH MARCH 31, 2010

COUNTY	HIGH	MODERATE	LOW	POTENTIAL	TOTAL	% OF TOTAL
APACHE	5	8	5	1	19	0.3%
COCHISE	19	39	59	10	127	2.0%
COCONINO	23	43	48	20	134	2.1%
GILA	6	8	17	5	36	0.6%
GRAHAM	4	6	2	0	12	0.2%
GREENLEE	0	0	2	0	2	0.0%
LA PAZ	3	9	10	2	24	0.4%
MARICOPA	640	1,434	1,834	434	4,342	67.7%
MOHAVE	20	76	70	18	184	2.9%
NAVAJO	16	33	24	7	80	1.3%
PIMA	124	287	455	91	957	15.0%
PINAL	31	54	47	25	157	2.5%
SANTA CRUZ	4	3	1	2	10	0.2%
YAVAPAI	15	62	64	25	166	2.6%
YUMA	15	51	61	14	141	2.2%
STATEWIDE	925	2,113	2,699	654	6,391	100.0%

% OF TOTAL	14.5%	33.1%	42.2%	10.2%	100.0%	
------------	-------	-------	-------	-------	--------	--

TABLE 26
NUMBER OF REPORTS ASSIGNED FOR INVESTIGATION BY RISK LEVEL AND COUNTY
THAT RESULTED IN UNSUBSTANTIATION FOR PERIOD OF
APRIL 1, 2009 THROUGH SEPTEMBER 30, 2009

COUNTY	HIGH	MODERATE	LOW	POTENTIAL	TOTAL	% OF TOTAL
APACHE	4	12	17	5	38	0.3%
COCHISE	31	100	157	24	312	2.5%
COCONINO	30	81	122	20	253	2.0%
GILA	9	17	32	8	66	0.5%
GRAHAM	9	33	29	9	80	0.6%
GREENLEE	2	5	6	0	13	0.1%
LA PAZ	1	9	12	3	25	0.2%
MARICOPA	1,173	2,645	3,672	737	8,227	64.9%
MOHAVE	57	156	241	26	480	3.8%
NAVAJO	18	52	67	14	151	1.2%
PIMA	208	618	828	189	1,843	14.5%
PINAL	85	165	190	64	504	4.0%
SANTA CRUZ	0	0	1	0	1	<0.1%
YAVAPAI	34	123	184	30	371	2.9%
YUMA	43	95	144	32	314	2.5%
STATEWIDE	1,704	4,111	5,702	1,161	12,678	100.0%
% OF TOTAL	13.4%	32.4%	45.0%	9.2%	100.0%	

CHART 17
NUMBER OF REPORTS ASSIGNED FOR INVESTIGATION BY TYPE OF MALTREATMENT
THAT RESULTED IN UNSUBSTANTIATION BY REPORTING PERIOD

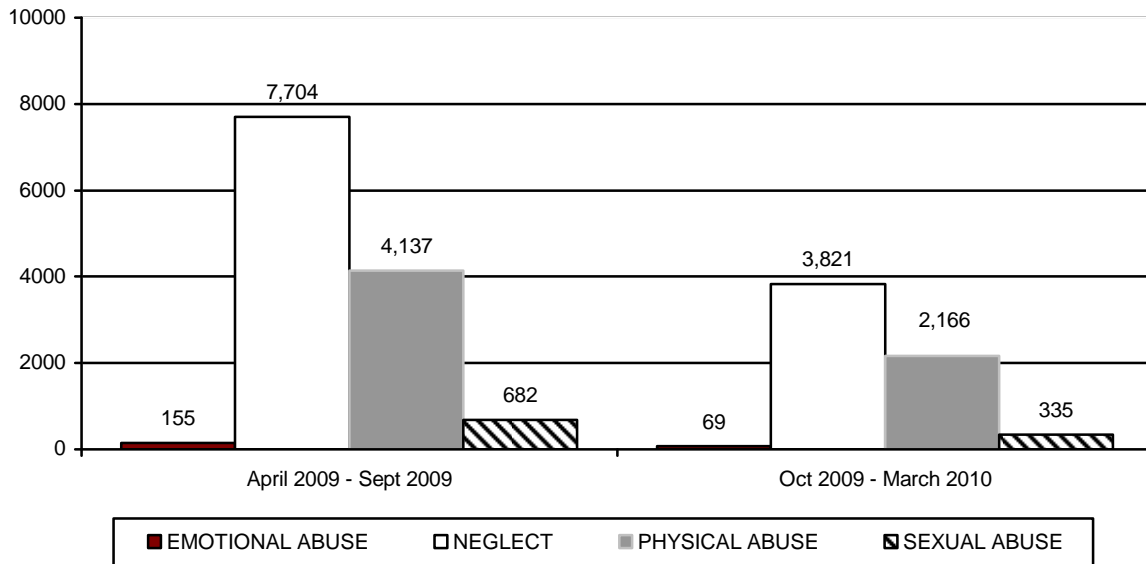


TABLE 27
NUMBER OF REPORTS ASSIGNED FOR INVESTIGATION BY TYPE OF MALTREATMENT
BY COUNTY THAT RESULTED IN UNSUBSTANTIATION FOR PERIOD OF
OCTOBER 1, 2009 THROUGH MARCH 31, 2010

COUNTY	EMOTIONAL ABUSE	NEGLECT	PHYSICAL ABUSE	SEXUAL ABUSE	TOTAL	% OF TOTAL
APACHE	0	9	9	1	19	0.3%
COCHISE	1	83	42	1	127	2.0%
COCONINO	0	84	44	6	134	2.1%
GILA	0	18	16	2	36	0.6%
GRAHAM	0	6	3	3	12	0.2%
GREENLEE	0	0	2	0	2	0.0%
LA PAZ	1	15	6	2	24	0.4%
MARICOPA	47	2,565	1,487	243	4,342	67.7%
MOHAVE	1	106	70	7	184	2.9%
NAVAJO	0	51	25	4	80	1.3%
PIMA	15	563	333	46	957	15.0%
PINAL	0	106	45	6	157	2.5%
SANTA CRUZ	0	7	2	1	10	0.2%
YAVAPAI	4	112	41	9	166	2.6%
YUMA	0	96	41	4	141	2.2%
STATEWIDE	69	3,821	2,166	335	6,391	100.0%
% OF TOTAL	1.1%	59.8%	33.9%	5.2%	100.0%	

TABLE 28
NUMBER OF REPORTS ASSIGNED FOR INVESTIGATION BY TYPE OF MALTREATMENT
BY COUNTY THAT RESULTED IN UNSUBSTANTIATION FOR PERIOD OF
APRIL 1, 2009 THROUGH SEPTEMBER 30, 2009

COUNTY	EMOTIONAL ABUSE	NEGLECT	PHYSICAL ABUSE	SEXUAL ABUSE	TOTAL	% OF TOTAL
APACHE	0	26	11	1	38	0.3%
COCHISE	8	184	109	11	312	2.5%
COCONINO	4	156	81	12	253	2.0%
GILA	0	39	19	8	66	0.5%
GRAHAM	0	45	30	5	80	0.6%
GREENLEE	0	11	2	0	13	0.1%
LA PAZ	0	16	8	1	25	0.2%
MARICOPA	99	4,952	2,748	428	8,227	64.9%
MOHAVE	5	298	152	25	480	3.8%
NAVAJO	1	100	40	10	151	1.2%
PIMA	20	1,106	597	120	1,843	14.5%
PINAL	5	336	139	24	504	4.0%
SANTA CRUZ	0	1	0	0	1	<0.1%
YAVAPAI	10	232	110	19	371	2.9%
YUMA	3	202	91	18	314	2.5%
STATEWIDE	155	7,704	4,137	682	12,678	100.0%
% OF TOTAL	1.2%	60.8%	32.6%	5.4%	100.0%	

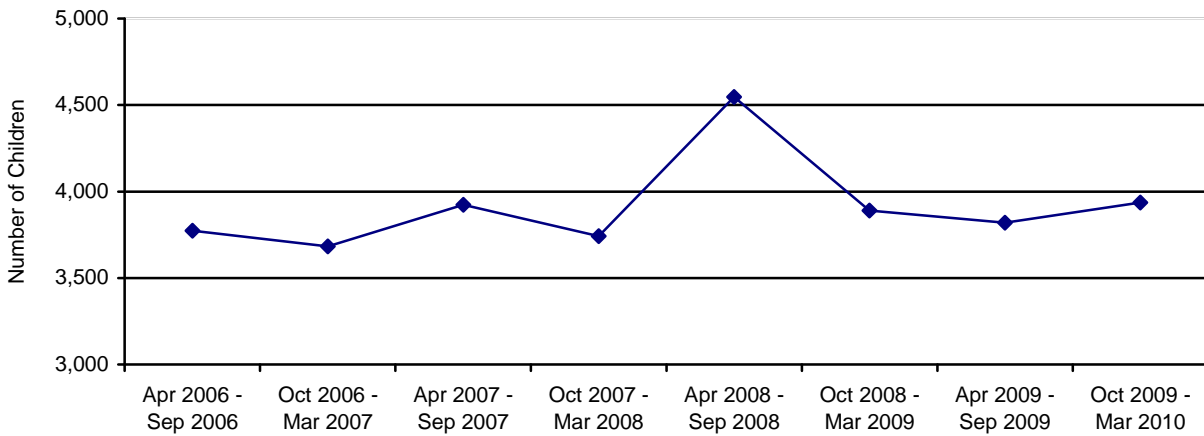
SAFE HAVEN INFANTS

There were no newborn infants delivered to Safe Haven providers during the October 2009 – March 2010 reporting period. This compares to two infants being delivered to Safe Haven providers during the April 2009 – September 2009 reporting period.

CHILDREN ENTERING OUT-OF-HOME CARE

During this reporting period, 3,936 children entered care as compared to 3,819 children for the April 2009 through September 2009 reporting period. Chart 18 displays children entering out-of-home care by reporting period.

**CHART 18
TOTAL CHILDREN ENTERING OUT-OF-HOME CARE BY REPORTING PERIOD**



The number of children entering out-of-home placement through voluntary foster care agreements for this reporting period was 125, which represents 3.2 percent of the children entering care this reporting period. Table 29 shows the number of children entering out-of-home care through voluntary placements for the current reporting period by county. Voluntary foster care may be provided when the parents or legal guardians of a child have requested such assistance and have signed a legally binding written agreement, not to exceed 90 days, for the temporary placement of the child in foster care while risk factors are addressed to enable the child to live safely at home. A voluntary foster care agreement may be utilized only when the circumstances that brought the child into foster care are likely to be remedied within the 90 day period of time. A.R.S. §8-806 authorizes the Department to provide voluntary foster care placement for children for a period not to exceed 90 days and no more than twice within 24 consecutive months.

TABLE 29
NUMBER OF CHILDREN ENTERING OUT-OF-HOME CARE BY COUNTY WHO ARE
VOLUNTARY PLACEMENTS FOR CHILDREN UNDER THE AGE OF EIGHTEEN FOR THE
PERIOD OF OCTOBER 1, 2009 THROUGH MARCH 31, 2010

COUNTY	NUMBER OF CHILDREN REMOVED	% OF TOTAL REMOVALS	NUMBER OF CHILDREN ENTERING OUT-OF-HOME CARE UNDER THE AGE OF EIGHTEEN WHO ARE VOLUNTARY PLACEMENTS	% OF CHILDREN REMOVED WHO ARE VOLUNTARY PLACEMENTS
APACHE	9	0.2%	1	0.8%
COCHISE	71	1.8%	0	0.0%
COCONINO	37	0.9%	2	1.6%
GILA	43	1.1%	1	0.8%
GRAHAM	19	0.5%	0	0.0%
GREENLEE	12	0.3%	0	0.0%
LA PAZ	3	0.1%	0	0.0%
MARICOPA	2,145	54.6%	60	48.0%
MOHAVE	117	3.0%	3	2.4%
NAVAJO	48	1.2%	4	3.2%
PIMA	1,059	26.9%	40	32.0%
PINAL	212	5.4%	1	0.8%
SANTA CRUZ	13	0.3%	0	0.0%
YAVAPAI	107	2.7%	8	6.4%
YUMA	41	1.0%	5	4.0%
STATEWIDE	3,936	100.0%	125	100.0%

TABLE 30
NUMBER OF CHILDREN ENTERING OUT-OF-HOME CARE BY COUNTY WHO ARE
VOLUNTARY PLACEMENTS FOR CHILDREN UNDER THE AGE OF EIGHTEEN FOR THE
PERIOD OF APRIL 1, 2009 THROUGH SEPTEMBER 30, 2009

COUNTY	NUMBER OF CHILDREN REMOVED	% OF TOTAL REMOVALS	NUMBER OF CHILDREN ENTERING OUT-OF-HOME CARE UNDER THE AGE OF EIGHTEEN WHO ARE VOLUNTARY PLACEMENTS	% OF CHILDREN REMOVED WHO ARE VOLUNTARY PLACEMENTS
APACHE	20	0.5%	0	0.0%
COCHISE	62	1.6%	1	0.7%
COCONINO	55	1.4%	8	5.4%
GILA	26	0.7%	0	0.0%
GRAHAM	8	0.2%	2	1.4%
GREENLEE	0	0.0%	0	0.0%
LA PAZ	3	0.1%	1	0.7%
MARICOPA	2,126	55.7%	57	38.3%
MOHAVE	91	2.4%	17	11.5%
NAVAJO	51	1.3%	4	2.7%
PIMA	1,020	26.7%	38	25.7%
PINAL	212	5.6%	6	4.1%
SANTA CRUZ	4	0.1%	0	0.0%
YAVAPAI	96	2.5%	12	8.1%
YUMA	45	1.2%	2	1.4%
STATEWIDE	3,819	100.0%	148	100.0%

The Department recognizes that the unwarranted re-entry into foster care is something to be avoided and continues to take steps to ensure that these re-entries are in the best interests of the child and family. In 2005, the Department began collaborating with the Chapin Hall Center for Children on a measure to aid the Department in identifying key factors in re-entry into foster care. This will enable the Department to utilize cohort data and help to identify if changes are needed in policy or practices.

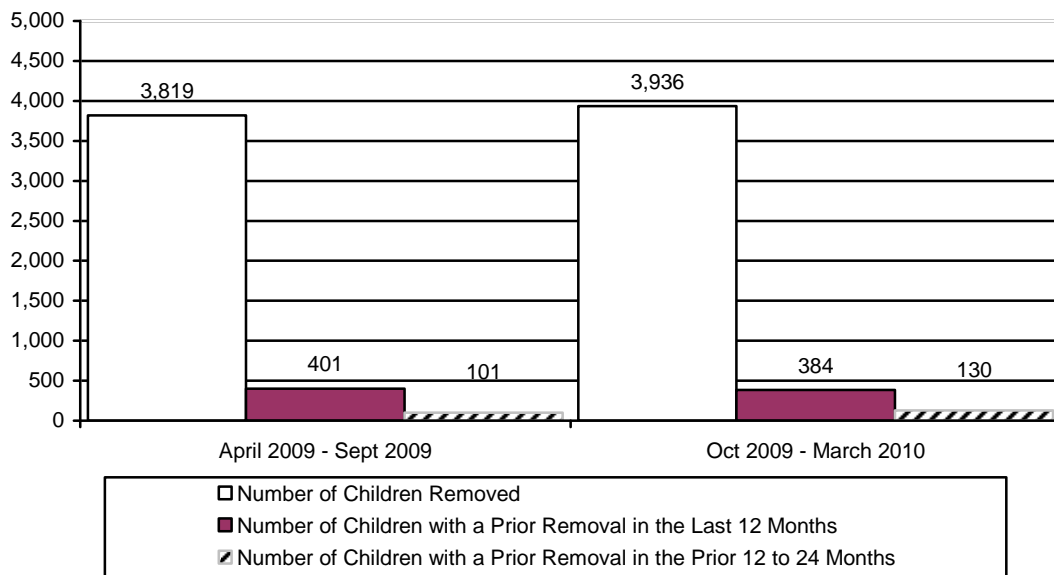
**TABLE 31
NUMBER OF CHILDREN ENTERING OUT-OF-HOME CARE BY COUNTY FOR THE
PERIOD OF OCTOBER 1, 2009 THROUGH MARCH 31, 2010**

COUNTY	NUMBER OF CHILDREN REMOVED	% OF TOTAL REMOVALS	NUMBER OF CHILDREN WITH A PRIOR REMOVAL IN THE LAST 12 MONTHS	% OF CHILDREN WITH A PRIOR REMOVAL IN THE LAST 12 MONTHS	NUMBER OF CHILDREN WITH A REMOVAL IN THE PRIOR 12 TO 24 MONTHS	% OF CHILDREN WITH A PRIOR REMOVAL IN THE PRIOR 12 TO 24 MONTHS
APACHE	9	0.2%	0	0.0%	0	0.0%
COCHISE	71	1.8%	4	5.6%	0	0.0%
COCONINO	37	0.9%	4	10.8%	0	0.0%
GILA	43	1.1%	3	7.0%	8	18.6%
GRAHAM	19	0.5%	3	15.8%	0	0.0%
GREENLEE	12	0.3%	1	8.3%	0	0.0%
LA PAZ	3	0.1%	0	0.0%	0	0.0%
MARICOPA	2,145	54.6%	202	9.4%	55	2.6%
MOHAVE	117	3.0%	6	5.1%	4	3.4%
NAVAJO	48	1.2%	1	2.1%	5	10.4%
PIMA	1,059	26.9%	128	12.1%	43	4.1%
PINAL	212	5.4%	17	8.0%	13	6.1%
SANTA CRUZ	13	0.3%	1	7.7%	0	0.0%
YAVAPAI	107	2.7%	11	10.3%	2	1.9%
YUMA	41	1.0%	3	7.3%	0	0.0%
STATEWIDE	3,936	100.0%	384	9.8%	130	3.3%

TABLE 32
NUMBER OF CHILDREN ENTERING OUT-OF-HOME CARE BY COUNTY FOR THE
PERIOD OF APRIL 1, 2009 THROUGH SEPTEMBER 30, 2010

COUNTY	NUMBER OF CHILDREN REMOVED	% OF TOTAL REMOVALS	NUMBER OF CHILDREN WITH A PRIOR REMOVAL IN THE LAST 12 MONTHS	% OF CHILDREN WITH A PRIOR REMOVAL IN THE LAST 12 MONTHS	NUMBER OF CHILDREN WITH A REMOVAL IN THE PRIOR 12 TO 24 MONTHS	% OF CHILDREN WITH A PRIOR REMOVAL IN THE PRIOR 12 TO 24 MONTHS
APACHE	20	0.5%	0	0.0%	0	0.0%
COCHISE	62	1.6%	6	9.7%	4	6.5%
COCONINO	55	1.4%	5	9.1%	1	1.8%
GILA	26	0.7%	0	0.0%	0	0.0%
GRAHAM	8	0.2%	4	50.0%	0	0.0%
GREENLEE	0	0.0%	0	0.0%	0	0.0%
LA PAZ	3	0.1%	0	0.0%	0	0.0%
MARICOPA	2,126	55.7%	221	10.4%	51	2.4%
MOHAVE	91	2.4%	5	5.5%	3	3.3%
NAVAJO	51	1.3%	5	9.8%	2	3.9%
PIMA	1,020	26.7%	124	12.2%	30	2.9%
PINAL	212	5.6%	19	9.0%	3	1.4%
SANTA CRUZ	4	0.1%	1	25.0%	0	0.0%
YAVAPAI	96	2.5%	11	11.5%	5	5.2%
YUMA	45	1.2%	0	0.0%	2	4.4%
STATEWIDE	3,819	100.0%	401	10.5%	101	2.6%

CHART 19
NUMBER OF CHILDREN ENTERING OUT-OF-HOME CARE BY REPORTING PERIOD



CHILDREN IN OUT-OF-HOME CARE

On March 31, 2010, there were 10,207 children in out-of-home care as compared to 10,112 children on September 30, 2009, an increase of 95 children. During this reporting period, 8,437 children or 82.6 percent were placed in family settings either with relatives or in foster homes. This compares to 8,293 or 82.0 percent of the children in the prior reporting period.

**CHART 20
NUMBER OF CHILDREN IN OUT-OF-HOME CARE ON THE LAST DAY OF THE REPORTING PERIOD BY REPORTING PERIOD**

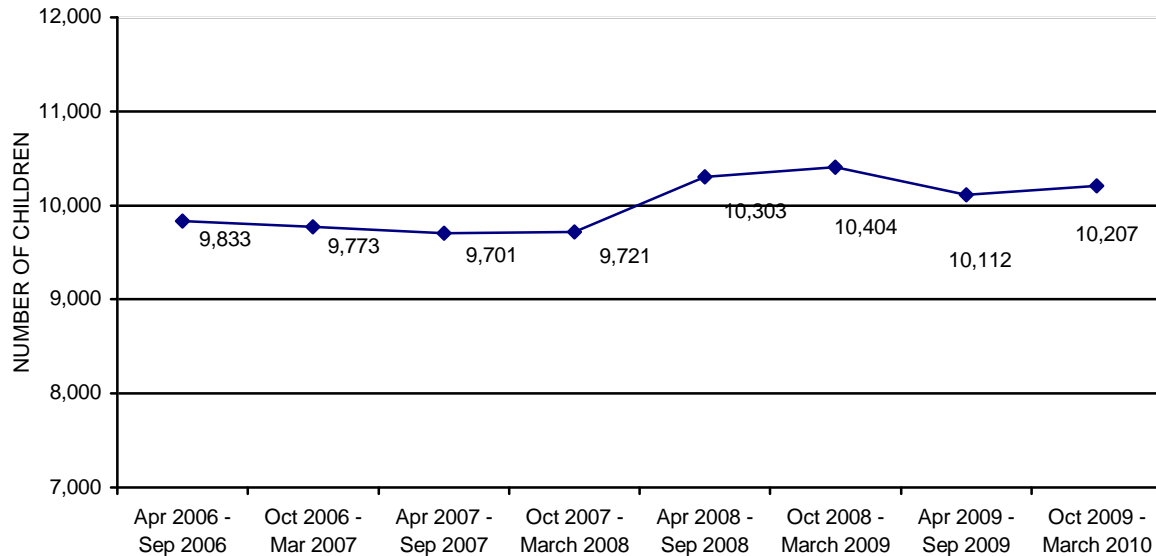


Chart 21 displays the decrease in the number of young children ages 0-6 placed in group homes. Comparing June 2006 to March 2010, the number of young children in group homes decreased by 14 children or 77.8 percent.

Chart 22 displays the decrease in the number of young children ages 0-3 placed in shelter care. Comparing March 2006 to March 2010, the number of young children in shelters decreased by 9 children or 29.0 percent. Chart 23 shows that the average length of time in shelter care has increased slightly; comparing March 2008 to March 2010, the average length of stay in shelter increased from 103.4 to 111.7 days, an increase of 8.3 days or 8.0 percent.

CHART 21
THE NUMBER OF CHILDREN IN GROUP HOMES AGES 0 TO 6³

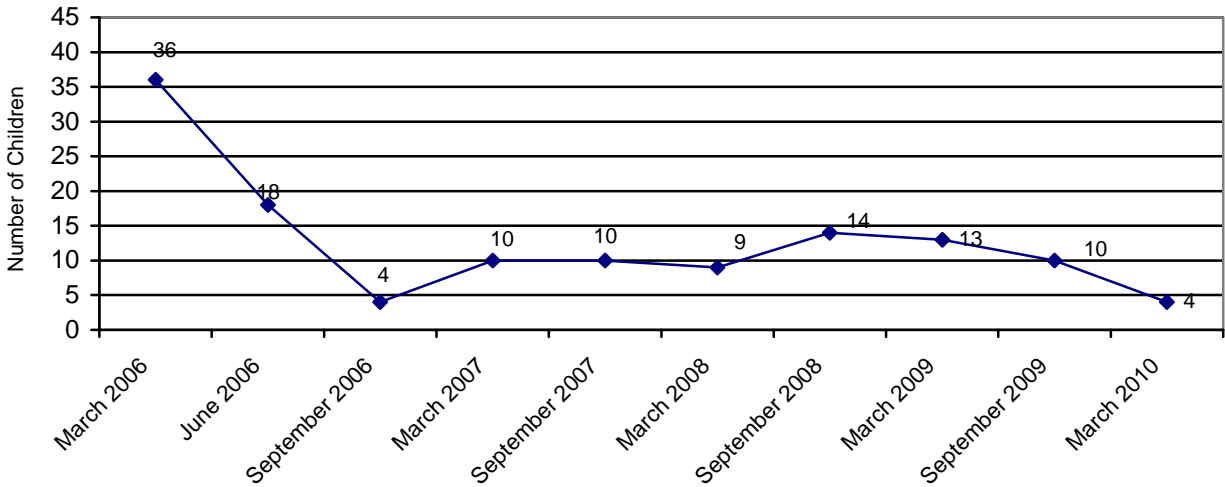
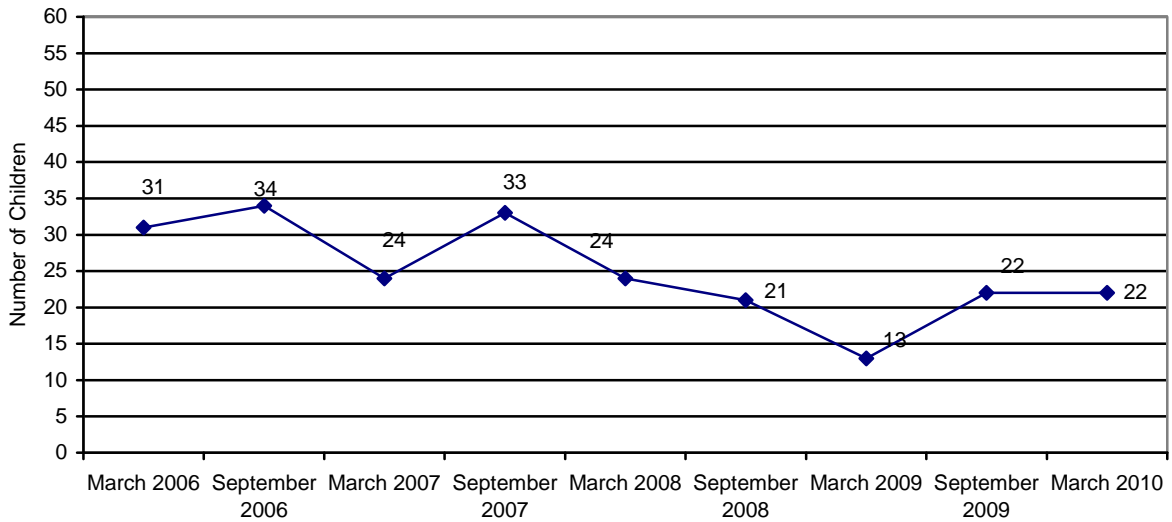
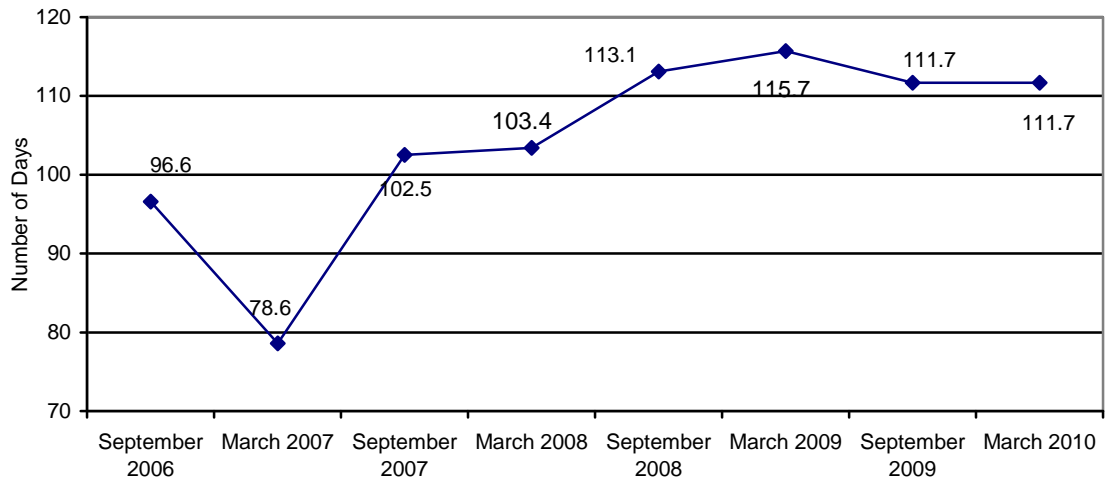


CHART 22
THE NUMBER OF CHILDREN IN SHELTER CARE AGES 0 TO 3



³ Excludes infants placed with their mothers and children placed in foster home group models.

CHART 23
THE AVERAGE LENGTH OF STAY IN A SHELTER PLACEMENT FOR CHILDREN AGES 0 TO 3 IN A SHELTER PLACEMENT ON THE LAST DAY OF THE REPORTING PERIOD



The majority of children in out-of-home care fall within the 1-5 age range (34.0 percent) and the 13-17 age range (24.8 percent). The majority of children in out-of-home care are either Caucasian (37.7 percent) or Hispanic (37.5 percent), followed by African American at 13.8 percent.

CHART 24
THE NUMBER OF CHILDREN IN OUT-OF-HOME CARE BY AGE

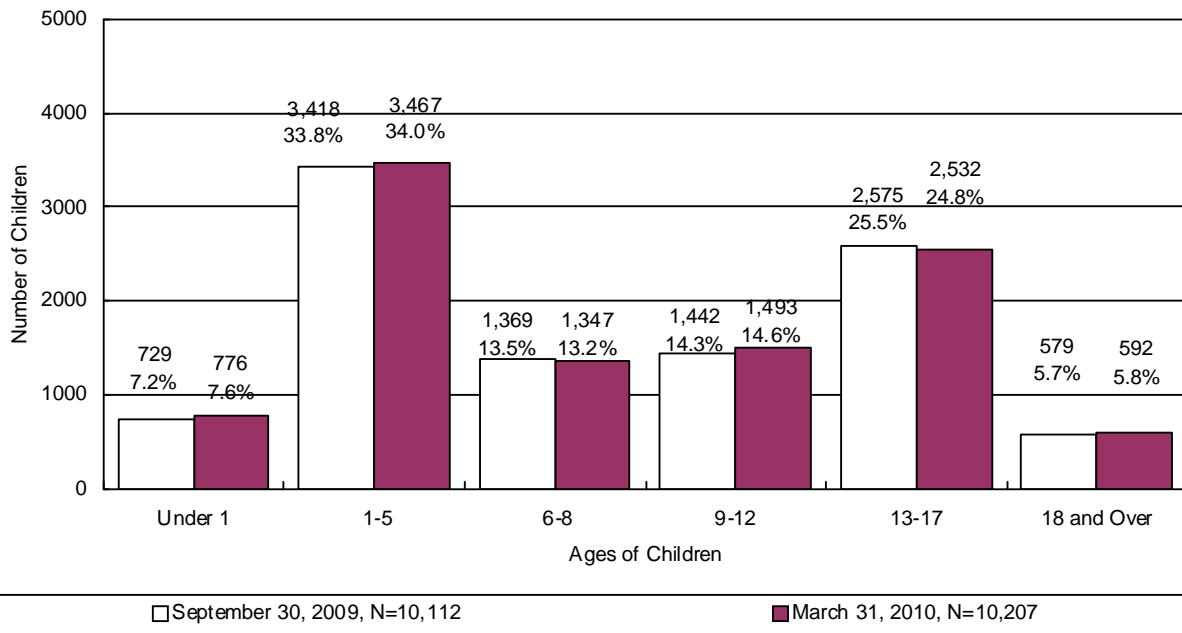
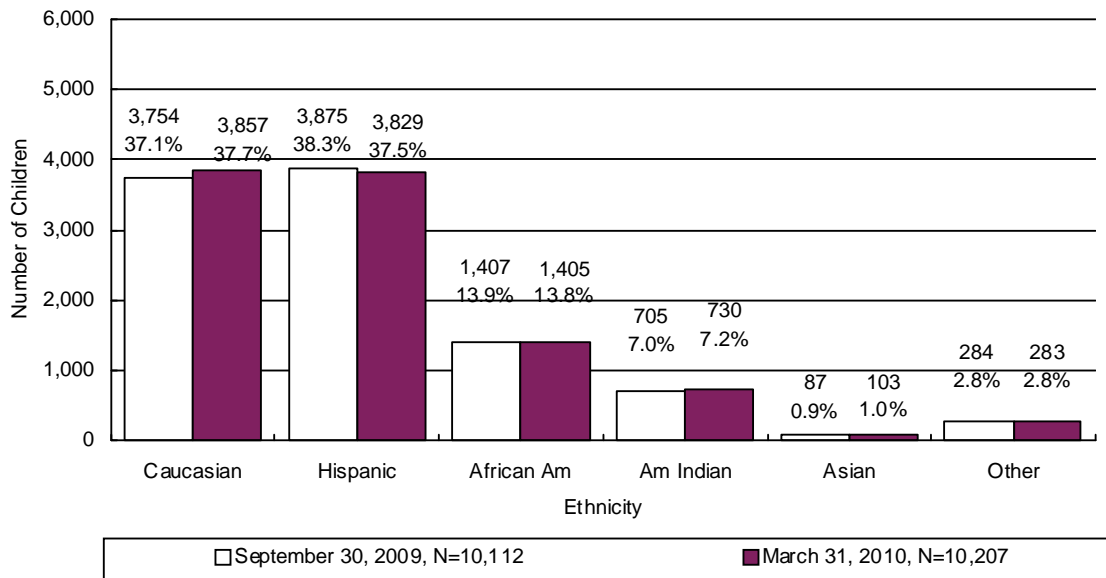


CHART 25
THE NUMBER OF CHILDREN IN OUT-OF-HOME CARE BY ETHNICITY



For 49.2 percent of the children in out-of-home care, family reunification remains the primary case plan goal. This is followed by: adoption, 23.6 percent; independent living, 10.7 percent; long-term foster care, 2.7 percent; live with other relative, 1.6 percent; and, guardianship at 0.4 percent. For the remaining 11.8 percent of the children, the case plan goal is in the process of development.

CHART 26
THE NUMBER OF CHILDREN IN OUT-OF-HOME CARE BY CASE PLAN GOAL

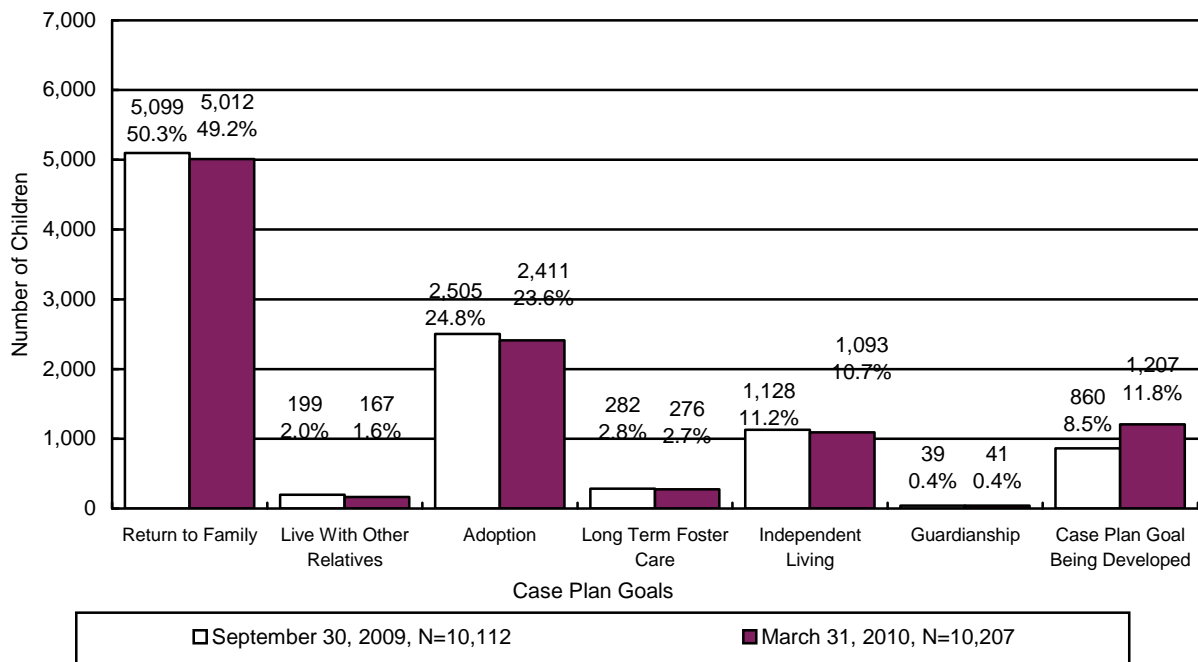
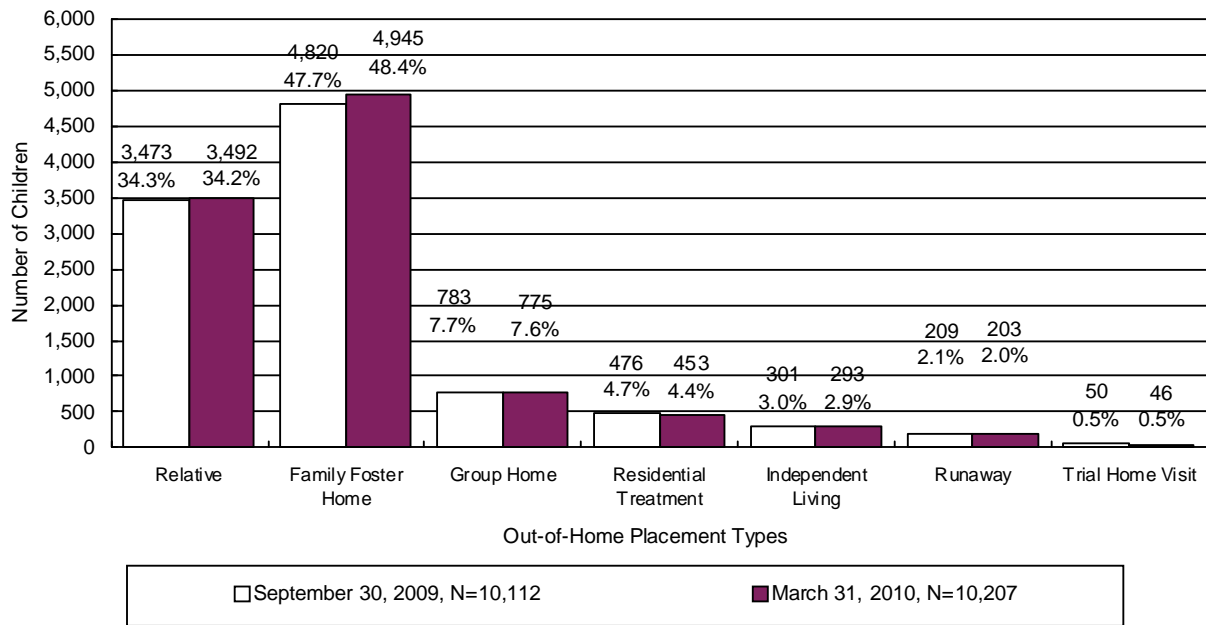


CHART 27
THE NUMBER OF CHILDREN IN OUT-OF-HOME CARE BY PLACEMENT TYPE



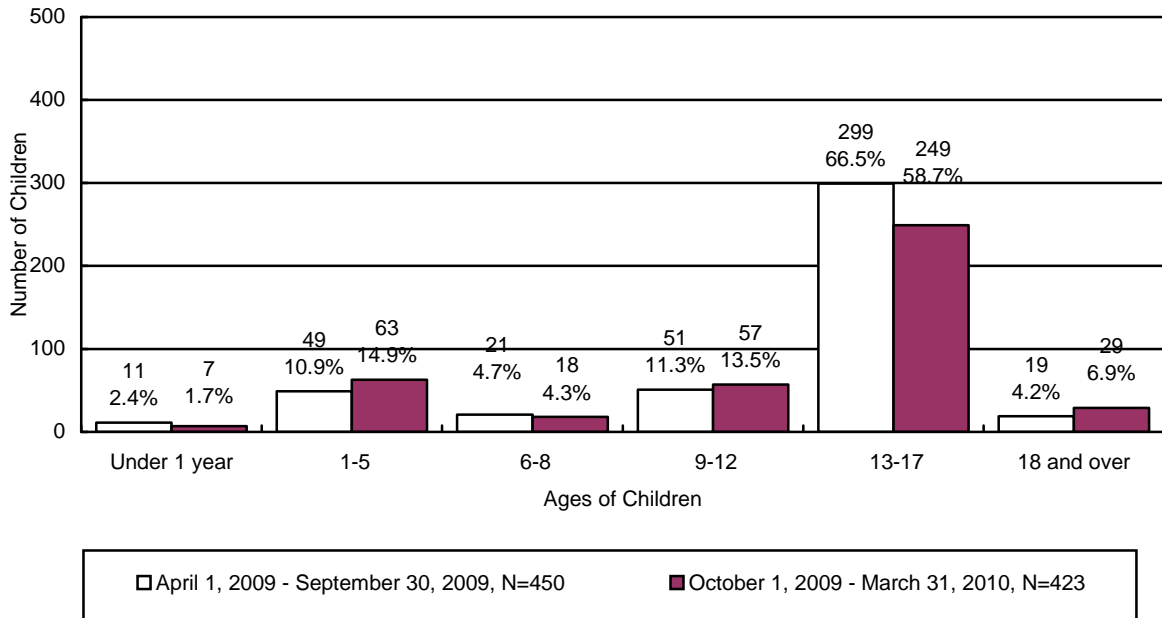
**TABLE 33
THE NUMBER OF CHILDREN IN OUT-OF-HOME CARE BY PLACEMENT TYPE AND AGE**

	RELATIVE	FAMILY FOSTER	GROUP HOME	RESIDENTIAL TREATMENT ⁴	INDEPENDENT LIVING	RUNAWAY	TRIAL HOME VISIT	TOTAL	% OF TOTAL
UNDER 1	310	454	2	6	0	0	4	776	7.6%
1	367	482	2	4	0	0	4	859	8.3%
2	372	406	0	6	0	1	4	789	7.7%
3	315	379	6	6	0	0	3	709	7.0%
4	242	327	2	6	0	0	1	578	5.7%
5	218	302	5	3	0	0	4	532	5.2%
6	202	245	5	4	0	0	0	456	4.5%
7	214	233	6	5	0	0	1	459	4.5%
8	188	231	11	2	0	0	0	432	4.2%
9	169	204	13	0	0	0	3	389	3.8%
10	134	201	16	7	0	0	4	362	3.6%
11	144	221	20	4	0	1	2	392	3.8%
12	104	194	36	16	0	0	0	350	3.4%
13	93	194	59	25	0	4	1	376	3.7%
14	101	190	88	42	0	12	2	435	4.3%
15	85	182	118	53	0	30	1	469	4.6%
16	110	217	148	58	0	46	2	581	5.7%
17	98	219	188	82	5	73	6	671	6.6%
18 AND OLDER	26	64	50	124	288	36	4	592	5.8%
TOTAL	3,492	4,945	775	453	293	203	46	10,207	100.0%
% OF TOTAL	34.2%	48.5%	7.6%	4.4%	2.8%	2.0%	0.5%	100.0%	

⁴ This category includes shelter, detention, and hospital placement types.

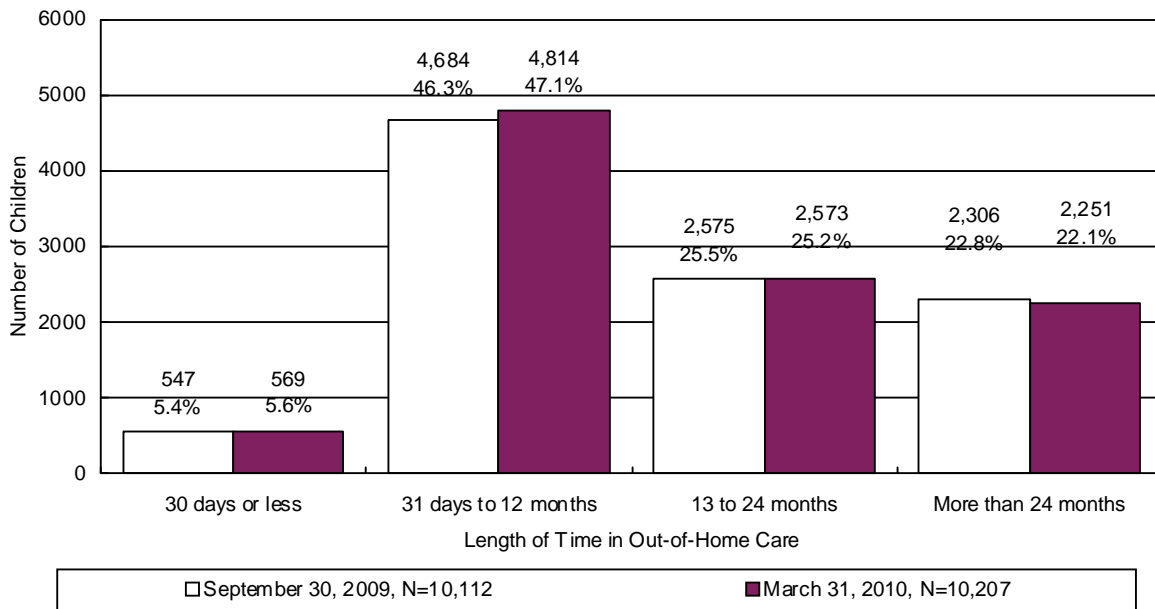
During the reporting period 423 children remained in a shelter or receiving home for more than 21 consecutive days. Chart 28 displays children in shelter greater than 21 days for the period of October 1, 2009 through March 31, 2010 and shows that 353 or 83.4 percent of the children were six years of age or older. In addition, 7 or 1.7 percent of the children were under one year old.

CHART 28
NUMBER AND PERCENTAGE OF CHILDREN IN SHELTER OR RECEIVING HOMES FOR MORE THAN 21 CONSECUTIVE DAYS BY AGE OF CHILD⁵



⁵ The chart displays children who spent more than 21 days in shelter during the period. This number differs from the other out-of-home charts as they display children in out-of-home care on the last day of the reporting period.

CHART 29
THE NUMBER OF CHILDREN IN OUT-OF-HOME CARE BY LENGTH OF TIME IN CARE



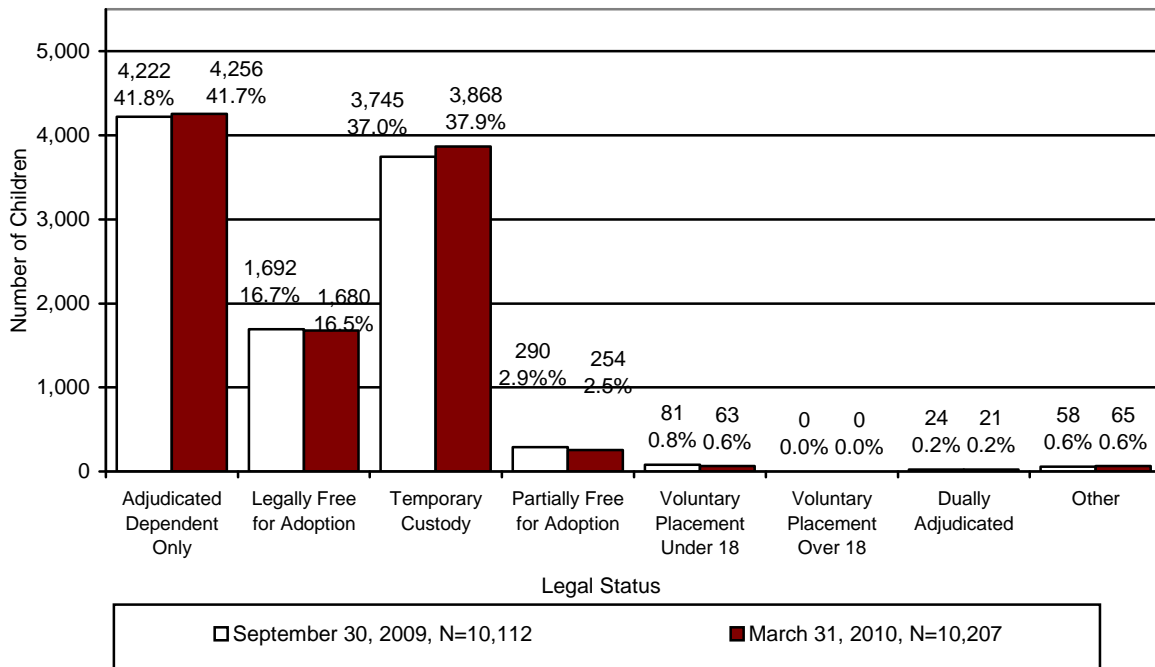
For the children in out-of-home care on September 30, 2009 the average number of placements was 2.8, the median number of placements was 2.0, and the range for the number of placements was 1 to 39 placements during their current removal episode.

TABLE 34
PLACEMENT INFORMATION FOR CHILDREN IN OUT-OF-HOME CARE ON MARCH 31, 2010

	Placements
Average	2.8
Median	2.0
Range Minimum	1
Range Maximum	39 ⁶

⁶ Some children are so damaged by the severity of the abuse they have suffered that they become unable to form meaningful relationships or to respond to services. These children tend to go through multiple placements with numerous individuals and agencies.

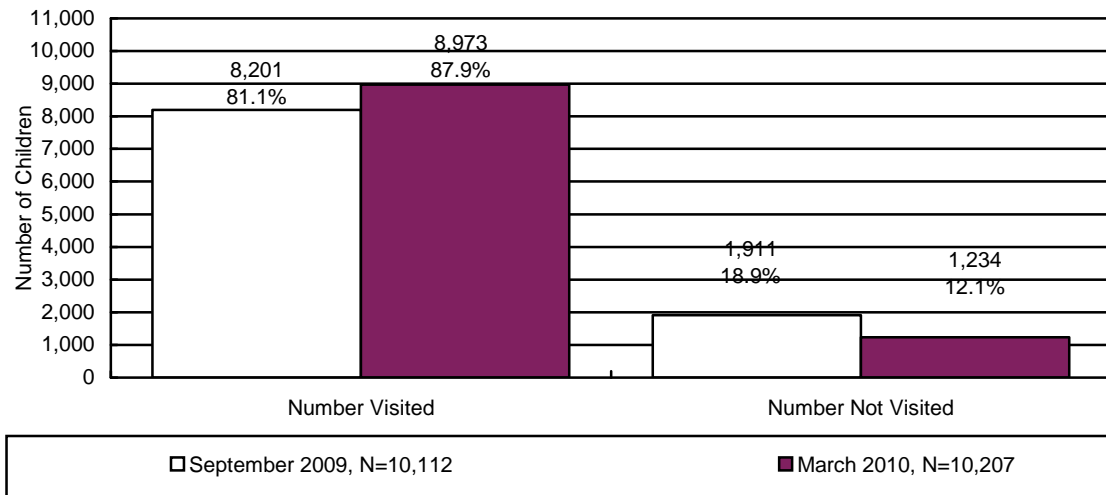
**CHART 30
CHILDREN IN OUT-OF-HOME CARE BY LEGAL STATUS**



At the end of the reporting period there were 10,207 children in out-of-home care who required visitation. Of these children, visitation was accurately documented in the automated system for 8,973 children. As displayed in Chart 31, during this reporting period, the percent of children receiving required visits by their CPS specialists increased by 6.8 percent to 87.9 percent.

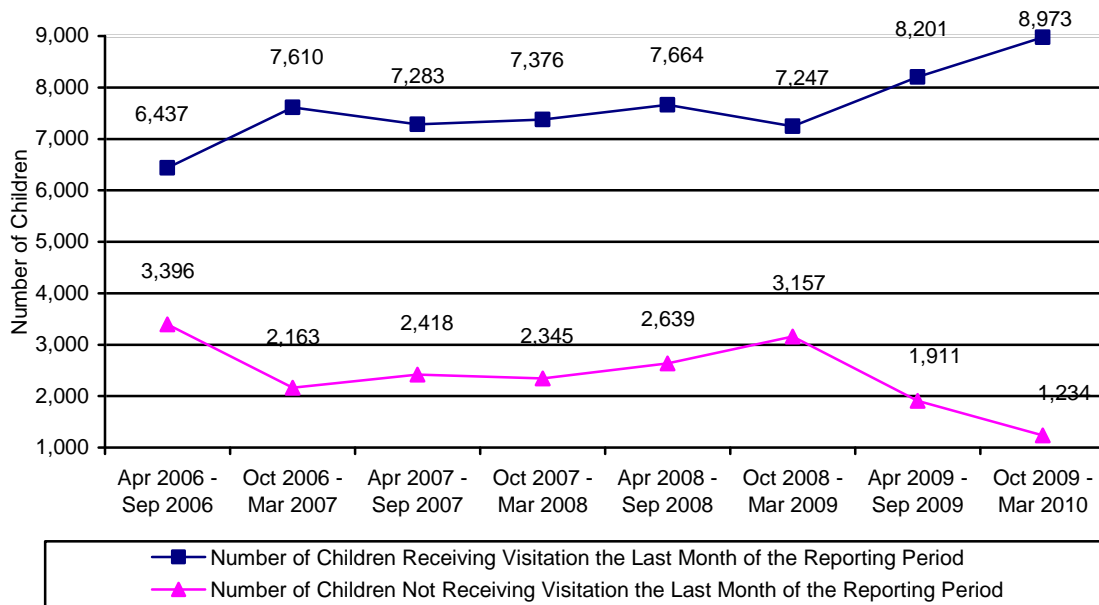
The required child visitation is performed monthly by DES case managers, contracted case managers, and/or other professionals as approved by a supervisor or as established by policy. The Department has verified that more children received the required visitation than is indicated in Chart 31. This information is clearly documented in the automated case notes. However, the Department is unable to compile and tabulate data based solely upon case note text. The Department continues to issue instructions to all direct service staff regarding the system requirements for capturing all visitations. A child was deemed to have received the required visitation if the child received the visitation during the last month of the reporting period.

**CHART 31
THE NUMBER AND PERCENTAGE OF CHILDREN WHO RECEIVED THE REQUIRED VISITATION**



According to Administration for Children, Youth and Families policy, case managers shall have face-to-face contact with all parents at least once a month, including any alleged parents and parents residing outside of the child’s home where the case plan goal is family reunification or remain with family. During the reporting period, there were 1,578 parents who had a child with the case plan goal of return home. Of those parents requiring visitation, 1,022 or 64.8 percent received the required visitation. The 64.8 percent visitation rate does not reflect attempted visitation where contact with the parent(s) did not take place.

**CHART 32
NUMBER OF CHILDREN RECEIVING AND NOT RECEIVING VISITATION BY REPORTING PERIOD**



FOSTER HOMES

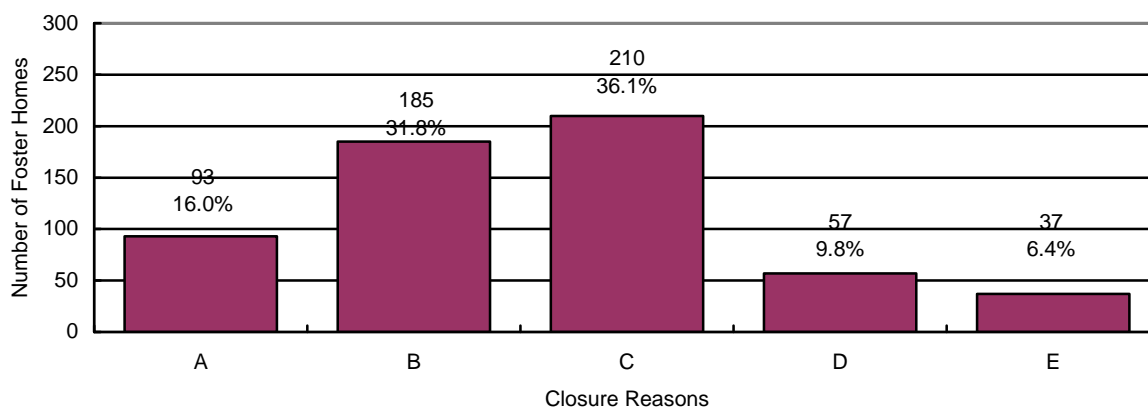
As of March 31, 2010, there were 3,932⁷ licensed foster homes with 8,789 spaces available for Administration for Children, Youth and Families placements. Licensed foster homes include family foster homes, professional family foster homes, respite foster homes, receiving foster homes, and developmentally disabled homes with DCYF children placed in them.

Foster home licenses specify the age range, gender and maximum number of children that can be placed in a home. Foster parents, in consultation with the licensing worker, decide the type of physical, behavioral, and psychological needs of children they can effectively parent based upon their own skill level, experiences, and desires.

As of March 31, 2010, there were 3,047 unused spaces within these foster homes. Of the unused spaces, a match between the available spaces and children’s needs was not possible.

During the reporting period, 560 new homes were licensed to provide foster care and 582 homes left the system. This compares to 107 new homes being licensed and 76 homes leaving the system for the period covering April 2009 through September 2009. The chart below gives the reasons for foster home closures for the period of October 1, 2009 through March 31, 2010.

**CHART 33
REASON FOR FOSTER HOME CLOSURE FOR THE PERIOD OF
OCTOBER 1, 2009 THROUGH MARCH 31, 2010**



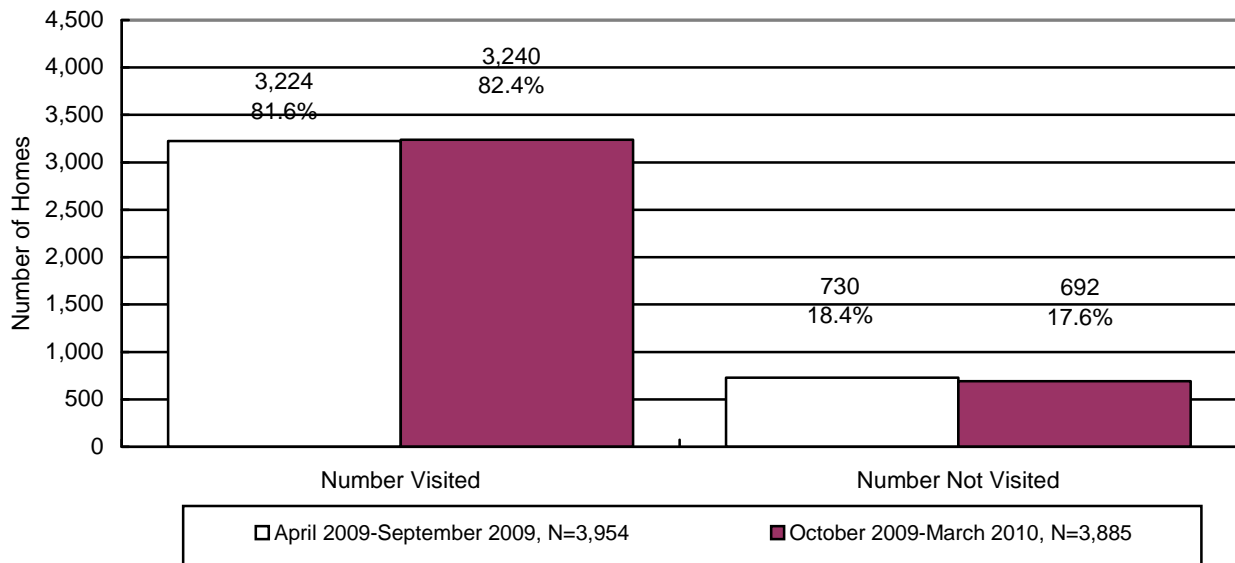
N=582

- A = Adoption / Guardianship Finalized**
- B = Failed to Renew**
- C = Family Request**
- D = Other**
- E = Relocation**

⁷ The number of homes cited in this report differs from the official number cited by the Office of Licensing, Certification & Regulation (OLCR) due to the fact that the Division for Children, Youth & Families utilizes foster homes that are licensed for developmental disabilities, licensed by the tribes, etc.

During the reporting period, there were 3,932 foster homes that required visitation. Of the 3,932 foster homes requiring visitation, 3,240 foster homes received their required visitation. This compares to 3,224 or 81.6 percent of the foster homes that received the required visitation for the period April 2009 through September 2009. The Department believes that more foster homes received the required visitation than is indicated in the chart below. The underreporting of foster home visitation is attributable to the lack of automation being used in reporting the foster home visitation process. The Department recognizes this as a problem and is working to correct this issue.

**CHART 34
THE NUMBER AND PERCENTAGE OF FOSTER HOMES WHO RECEIVED THE
REQUIRED VISITATION***



*Required visitations to foster homes, for license monitoring purposes, are performed by licensing case managers.

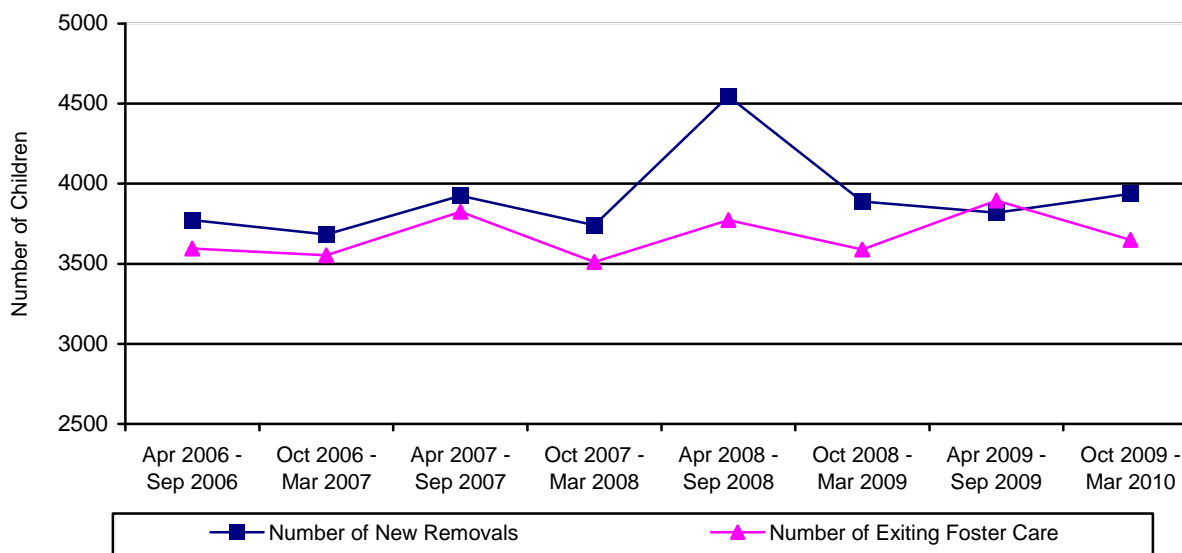
CHILDREN EXITING OUT-OF HOME CARE

During the reporting period, 3,650 children left the custody of the Department. This compares to 3,894 children exiting care during the prior reporting period. The comparison between the two reporting periods shows that 6.3 percent fewer children left care this reporting period for a decrease of 244 children exiting care.

**TABLE 35
CHILDREN EXITING OUT-OF-HOME CARE BY PERIOD**

REPORTING PERIOD	NUMBER OF CHILDREN DISCHARGED	% CHANGE OVER PRIOR PERIOD
APRIL 2006 – SEPTEMBER 2006	3,595	+2.5%
OCTOBER 2006 – MARCH 2007	3,553	-1.2%
APRIL 2007 – SEPTEMBER 2007	3,824	+7.6%
OCTOBER 2007 – MARCH 2008	3,512	-8.2%
APRIL 2008 – SEPTEMBER 2008	3,773	+7.4%
OCTOBER 2008 – MARCH 2009	3,590	-4.9%
APRIL 2009 – SEPTEMBER 2009	3,894	+8.5%
OCTOBER 2009 – MARCH 2010	3,650	-6.3%

**CHART 35
CHILDREN ENTERING AND EXITING OUT-OF-HOME CARE BY REPORTING PERIOD**



The following nine tables depict the children who exited out-of-home care by the reason for leaving care. The tables display the following information: reasons the child left custody, their age, their ethnicity, the number of placements each child had, and the length of time in out-of-home care.

TABLE 36
TOTAL NUMBER OF CHILDREN LEAVING DES CUSTODY FOR THE END OF THE
REPORTING PERIOD ENDING ON MARCH 31, 2010

By Age	Number	Percentage
Under 1	187	5.1%
Ages 1 – 5	1,357	37.1%
Ages 6 – 8	503	13.8%
Ages 9 – 12	510	14.0%
Ages 13 – 17	783	21.5%
18 and Over	310	8.5%
Total	3,650	100.0%
Ethnicity	Number	Percentage
Caucasian	1,349	37.0%
Hispanic	1,397	38.2%
African American	496	13.6%
American Indian	260	7.1%
Asian	39	1.1%
Other	109	3.0%
Total	3,650	100.0%
By Number of Placements	Number	Percentage
One	2,000	54.8%
Two	743	20.4%
Three	360	9.9%
Four	202	5.5%
Five	110	3.0%
More than Five	235	6.4%
Total	3,650	100.0%
By Length of Time in Care	Number	Percentage
Less than 30 Days	837	22.9%
31 Days to 12 Months	1,021	28.0%
13 to 24 Months	957	26.2%
More than 24 Months	835	22.9%
Total	3,650	100.0%

	Average	Median
By Age	8.7	7.6
By Number of Placements	2.3	1.0
By Months of Time in Care	16.4	12.7

**TABLE 37
NUMBER AND PERCENTAGE OF CHILDREN LEAVING DES CUSTODY
FOR REASON OF "REUNIFICATION WITH PARENTS OR PRIMARY CARETAKER" FOR
THE REPORTING PERIOD ENDING MARCH 31, 2010**

By Age	Number	Percentage
Under 1	147	8.3%
Ages 1 - 5	651	36.6%
Ages 6 - 8	261	14.7%
Ages 9 - 12	264	14.8%
Ages 13 - 17	451	25.4%
18 and Over	4	0.2%
Total	1,778	100.0%
Ethnicity	Number	Percentage
Caucasian	648	36.4%
Hispanic	675	37.9%
African American	250	14.1%
American Indian	108	6.1%
Asian	23	1.3%
Other	74	4.2%
Total	1,778	100.0%
By Number of Placements	Number	Percentage
One	1,216	68.5%
Two	334	18.8%
Three	118	6.6%
Four	52	2.9%
Five	24	1.3%
More than Five	34	1.9%
Total	1,778	100.0%
By Length of Time in Care	Number	Percentage
Less than 30 Days	718	40.5%
31 Days to 12 Months	719	40.4%
13 to 24 Months	280	15.7%
More than 24 Months	61	3.4%
Total	1,778	100.0%

	Average	Median
By Age	8.0	6.9
By Number of Placements	2.3	1.0
By Months of Time in Care	16.4	3.2

**TABLE 38
NUMBER AND PERCENTAGE OF CHILDREN LEAVING DES CUSTODY
FOR REASON OF "LIVING WITH OTHER RELATIVES" FOR THE REPORTING PERIOD
ENDING MARCH 31, 2010**

By Age	Number	Percentage
Under 1	2	7.7%
Ages 1 - 5	11	42.3%
Ages 6 - 8	2	7.7%
Ages 9 - 12	2	7.7%
Ages 13 - 17	9	34.6%
18 and Over	0	0.0%
Total	26	100.0%
Ethnicity	Number	Percentage
Caucasian	13	50.0%
Hispanic	9	34.7%
African American	1	3.8%
American Indian	1	3.8%
Asian	0	0.0%
Other	2	7.7%
Total	26	100.0%
By Number of Placements	Number	Percentage
One	24	92.3%
Two	2	7.7%
Three	0	0.0%
Four	0	0.0%
Five	0	0.0%
More than Five	0	0.0%
Total	26	100.0%
By Length of Time in Care	Number	Percentage
Less than 30 Days	23	88.5%
31 Days to 12 Months	3	11.5%
13 to 24 Months	0	0.0%
More than 24 Months	0	0.0%
Total	26	100.0%

	Average	Median
By Age	8.2	6.0
By Number of Placements	1.0	1.0
By Months of Time in Care	0.5	0.1

**TABLE 39
NUMBER AND PERCENTAGE OF CHILDREN LEAVING DES
CUSTODY FOR REASON OF "ADOPTION" FOR THE REPORTING PERIOD
ENDING MARCH 31, 2010**

By Age	Number	Percentage
Under 1	18	1.7%
Ages 1 - 5	557	54.0%
Ages 6 - 8	169	16.3%
Ages 9 - 12	172	16.6%
Ages 13 - 17	117	11.3%
18 and Over	1	0.1%
Total	1,034	100.0%
Ethnicity	Number	Percentage
Caucasian	420	40.6%
Hispanic	434	42.0%
African American	115	11.1%
American Indian	48	4.6%
Asian	6	0.6%
Other	11	1.1%
Total	1,034	100.0%
By Number of Placements	Number	Percentage
One	450	43.4%
Two	281	27.2%
Three	155	15.0%
Four	73	7.1%
Five	41	4.0%
More than Five	34	3.3%
Total	1,034	100.0%
By Length of Time in Care	Number	Percentage
Less than 30 Days	0	0.0%
31 Days to 12 Months	74	7.2%
13 to 24 Months	438	42.4%
More than 24 Months	522	50.4%
Total	1,034	100.0%

	Average	Median
By Age	6.4	5.1
By Number of Placements	2.2	2.0
By Months of Time in Care	26.6	24.2

**TABLE 40
NUMBER AND PERCENTAGE OF CHILDREN LEAVING DES CUSTODY
FOR REASON OF “GUARDIANSHIP” FOR THE REPORTING PERIOD
ENDING MARCH 31, 2010**

By Age	Number	Percentage
Under 1	2	0.6%
Ages 1 - 5	87	27.9%
Ages 6 – 8	54	17.3%
Ages 9 - 12	55	17.6%
Ages 13 - 17	114	36.6%
18 and Over	0	0.0%
Total	312	100.0%
Ethnicity	Number	Percentage
Caucasian	87	27.9%
Hispanic	120	38.4%
African American	37	11.9%
American Indian	57	18.3%
Asian	6	1.9%
Other	5	1.6%
Total	312	100.0%
By Number of Placements	Number	Percentage
One	155	49.8%
Two	59	18.9%
Three	39	12.5%
Four	26	8.3%
Five	17	5.4%
More than Five	16	5.1%
Total	312	100.0%
By Length of Time in Care	Number	Percentage
Less than 30 Days	14	4.5%
31 Days to 12 Months	106	34.0%
13 to 24 Months	136	43.6%
More than 24 Months	56	17.9%
Total	312	100.0%

	Average	Median
By Age	9.8	9.6
By Number of Placements	2.3	2.0
By Months of Time in Care	16.7	14.5

**TABLE 41
NUMBER AND PERCENTAGE OF CHILDREN LEAVING DES CUSTODY
FOR REASONS OF "REACHING AGE OF MAJORITY" FOR THE REPORTING PERIOD
ENDING MARCH 31, 2010**

By Age	Number	Percentage
Under 1	0	0.0%
Ages 1 - 5	0	0.0%
Ages 6 - 8	0	0.0%
Ages 9 - 12	0	0.0%
Ages 13 - 17	4	1.3%
18 and Over	300	98.7%
Total	304	100.0%
Ethnicity	Number	Percentage
Caucasian	129	42.5%
Hispanic	97	31.9%
African American	62	20.4%
American Indian	8	2.6%
Asian	3	1.0%
Other	5	1.6%
Total	304	100.0%
By Number of Placements	Number	Percentage
One	32	10.5%
Two	34	11.2%
Three	32	10.5%
Four	37	12.2%
Five	24	7.9%
More than Five	145	47.7%
Total	304	100.0%
By Length of Time in Care	Number	Percentage
Less than 30 Days	3	1.0%
31 Days to 12 Months	55	18.1%
13 to 24 Months	65	21.4%
More than 24 Months	181	59.5%
Total	304	100.0%

	Average	Median
By Age	18.7	18.1
By Number of Placements	7.1	5.0
By Months of Time in Care	44.6	32.1

**TABLE 42
NUMBER AND PERCENTAGE OF CHILDREN LEAVING DES CUSTODY
FOR REASON OF "TRANSFER TO ANOTHER AGENCY" FOR THE REPORTING PERIOD
ENDING MARCH 31, 2010**

By Age	Number	Percentage
Under 1	17	12.4%
Ages 1 – 5	51	37.2%
Ages 6 – 8	16	11.7%
Ages 9 – 12	17	12.4%
Ages 13 – 17	32	23.4%
18 and Over	4	2.9%
Total	137	100.0%
Ethnicity	Number	Percentage
Caucasian	39	28.5%
Hispanic	35	25.5%
African American	22	16.1%
American Indian	31	22.6%
Asian	1	0.7%
Other	9	6.6%
Total	137	100.0%
By Number of Placements	Number	Percentage
One	76	55.5%
Two	26	19.0%
Three	15	10.9%
Four	14	10.2%
Five	2	1.5%
More than Five	4	2.9%
Total	137	100.0%
By Length of Time in Care	Number	Percentage
Less than 30 Days	39	28.5%
31 Days to 12 Months	53	38.7%
13 to 24 Months	34	24.8%
More than 24 Months	11	8.0%
Total	137	100.0%

	Average	Median
By Age	7.5	6.2
By Number of Placements	2.1	1.0
By Months of Time in Care	10.0	6.6

**TABLE 43
NUMBER AND PERCENTAGE OF CHILDREN LEAVING DES CUSTODY
FOR REASON OF “RUNAWAY” FOR THE REPORTING PERIOD
ENDING MARCH 31, 2010**

By Age	Number	Percentage
Under 1	0	0.0%
Ages 1 – 5	0	0.0%
Ages 6 – 8	0	0.0%
Ages 9 – 12	0	0.0%
Ages 13 – 17	56	98.2%
18 and Over	1	1.8%
Total	57	100.0%
Ethnicity	Number	Percentage
Caucasian	13	22.8%
Hispanic	26	45.6%
African American	9	15.8%
American Indian	6	10.5%
Asian	0	0.0%
Other	3	5.3%
Total	57	100.0%
By Number of Placements	Number	Percentage
One	46	80.7%
Two	6	10.5%
Three	1	1.8%
Four	0	0.0%
Five	2	3.5%
More than Five	2	3.5%
Total	57	100.0%
By Length of Time in Care	Number	Percentage
Less than 30 Days	40	70.2%
31 Days to 12 Months	10	17.5%
13 to 24 Months	4	7.0%
More than 24 Months	3	5.3%
Total	57	100.0%

	Average	Median
By Age	16.5	16.8
By Number of Placements	1.4	1.0
By Months of Time in Care	4.0	0.1

**TABLE 44
 NUMBER AND PERCENTAGE OF CHILDREN LEAVING DES CUSTODY
 FOR REASON OF “DEATH OF CHILD” FOR THE REPORTING PERIOD ENDING
 MARCH 31, 2010**

By Age	Number	Percentage
Under 1	1	50.0%
Ages 1 - 5	0	0.0%
Ages 6 – 8	1	50.0%
Ages 9 - 12	0	0.0%
Ages 13 - 17	0	0.0%
18 and Over	0	0.0%
Total	2	100.0%
Ethnicity	Number	Percentage
Caucasian	0	0.0%
Hispanic	1	50.0%
African American	0	0.0%
American Indian	1	50.0%
Asian	0	0.0%
Other	0	0.0%
Total	2	100.0%
By Number of Placements	Number	Percentage
One	1	50.0%
Two	1	50.0%
Three	0	0.0%
Four	0	0.0%
Five	0	0.0%
More than Five	0	0.0%
Total	2	100.0%
By Length of Time in Care	Number	Percentage
Less than 30 Days	0	0.0%
31 Days to 12 Months	1	50.0%
13 to 24 Months	0	0.0%
More than 24 Months	1	50.0%
Total	2	100.0%

	Average	Median
By Age	4.6	4.6
By Number of Placements	1.5	1.5
By Months of Time in Care	21.8	21.8

**TABLE 45
CHILDREN EXITING CARE FOR REASON OF DEATH BY CAUSE OF DEATH,
PLACEMENT TYPE AT TIME OF DEATH, AND COUNTY**

COUNTY	CAUSE OF DEATH	TYPE OF PLACEMENT AT TIME OF DEATH
Maricopa	Undetermined at the time of this report.	Family Foster Home
Maricopa	Blunt force trauma - accidental	Family Foster Home

**TABLE 46
NUMBER OF CHILDREN IN AN OPEN CASE WHO DIED AS A RESULT OF ALLEGED
ABUSE AS CATEGORIZED BY THE CUSTODIAL RELATIONSHIP AND COUNTY FOR THE
PERIOD OCTOBER 1, 2009 THROUGH MARCH 31, 2010**

COUNTY	BIOLOGICAL PARENT(S)	OTHER FAMILY MEMBER	ADOPTIVE PARENT(S)	FOSTER CARE PARENT(S)	OTHER OUT-OF-HOME CARE PROVIDER	TOTAL	% OF TOTAL
APACHE	0	0	0	0	0	0	0.0%
COCHISE	0	0	0	0	0	0	0.0%
COCONINO	0	0	0	0	0	0	0.0%
GILA	0	0	0	0	0	0	0.0%
GRAHAM	0	0	0	0	0	0	0.0%
GREENLEE	0	0	0	0	0	0	0.0%
LA PAZ	0	0	0	0	0	0	0.0%
MARICOPA	2	1	0	0	0	3	75.0%
MOHAVE	0	0	0	0	0	0	0.0%
NAVAJO	0	0	0	0	0	0	0.0%
PIMA	1	0	0	0	0	1	25.0%
PINAL	0	0	0	0	0	0	0.0%
SANTA CRUZ	0	0	0	0	0	0	0.0%
YAVAPAI	0	0	0	0	0	0	0.0%
YUMA	0	0	0	0	0	0	0.0%
STATEWIDE	3	1	0	0	0	4	100.0%
% OF TOTAL	75.0%	25.0%	0.0%	0.0%	0.0%	100.0%	

CHILDREN WITH ADOPTIVE CASE PLAN GOALS

Of the 10,207 children in out-of-home care on March 31, 2010, 2,411 or 23.6 percent had a case plan goal of adoption. The majority of those children, 46.9 percent, are in the 1-5 year old age range, followed by 19.3 percent in the 9-12 year old age range, and 18.5 percent in the 6-8 year old age range. The remaining children, 368 or 15.3 percent, fall within the under one or 13 and over age range. The majority of these children are Caucasian (940 or 39.0 percent), Hispanic (929 or 38.5 percent), or African American (326 or 13.5 percent). The remaining 216 children or 9.0 percent are American Indian, Asian or other. Eighty-seven percent, or 2,098 of the children free for adoption, are currently placed in their adoptive homes.

**TABLE 47
NUMBER OF CHILDREN WITH A PETITION FOR TERMINATION OF PARENTAL RIGHTS
BY COUNTY FOR THE PERIOD OCTOBER 1, 2009 THROUGH MARCH 31, 2010**

COUNTY	TERMINATION OF RIGHTS GRANTED	TERMINATION OF RIGHTS DENIED	TERMINATION OF RIGHTS GRANTED IN PART/DENIED IN PART	TERMINATION OF RIGHTS WITHDRAWN	TOTAL	% OF TOTAL
APACHE	1	0	0	0	1	0.1%
COCHISE	12	0	0	0	12	1.0%
COCONINO	17	0	0	0	17	1.5%
GILA	7	0	0	0	7	0.6%
GRAHAM	1	0	0	0	1	0.1%
GREENLEE	0	0	0	0	0	0.0%
LA PAZ	0	0	0	0	0	0.0%
MARICOPA	655	6	0	10	671	57.4%
MOHAVE	19	1	0	0	20	1.7%
NAVAJO	3	0	0	1	4	0.3%
PIMA	317	1	0	4	322	27.5%
PINAL	70	0	0	0	70	6.0%
SANTA CRUZ	1	0	0	0	1	0.1%
YAVAPAI	40	0	0	0	40	3.4%
YUMA	3	0	0	0	3	0.3%
STATEWIDE	1,146	8	0	15	1,169	100.0%
% OF TOTAL	98.0%	0.7%	0.0%	1.5%	100.0%	

The average length of time that a child with a case plan goal of “adoption” has spent in out-of-home care is 2 years, 4 months. There were a total of 2,411 children with case plan goals of adoption during this reporting period. Of this total, 2,098 were placed and 313 were not placed. The population of children with case plan goals of adoption averaged 2.9 placements and had a median placement count of 2.0. Their placement count ranged from 1 to 39.

**TABLE 48
PLACEMENT INFORMATION FOR CHILDREN WITH A CASE PLAN GOAL OF ADOPTION**

	Placements
Average	2.9
Median	2.0
Range Minimum	1.0
Range Maximum	39.0

**CHART 36
THE PLACEMENT AND NUMBER OF CHILDREN WITH A CASE PLAN GOAL OF ADOPTION BY AGE**

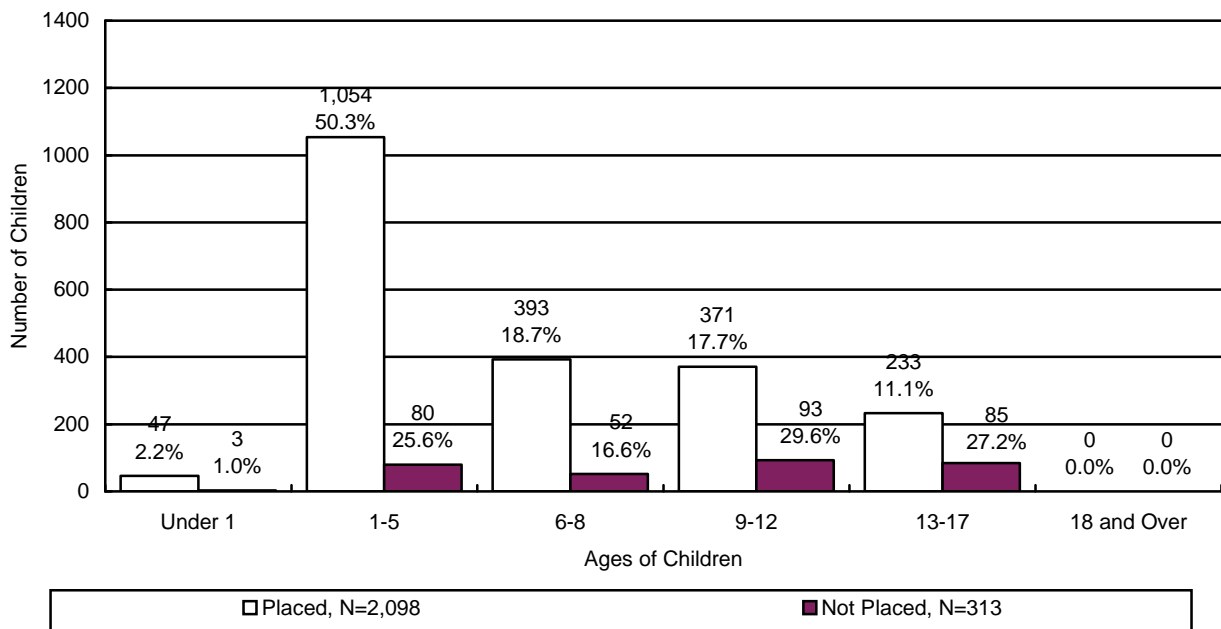


CHART 37
THE PLACEMENT AND NUMBER OF CHILDREN WITH A CASE PLAN GOAL OF ADOPTION BY ETHNICITY

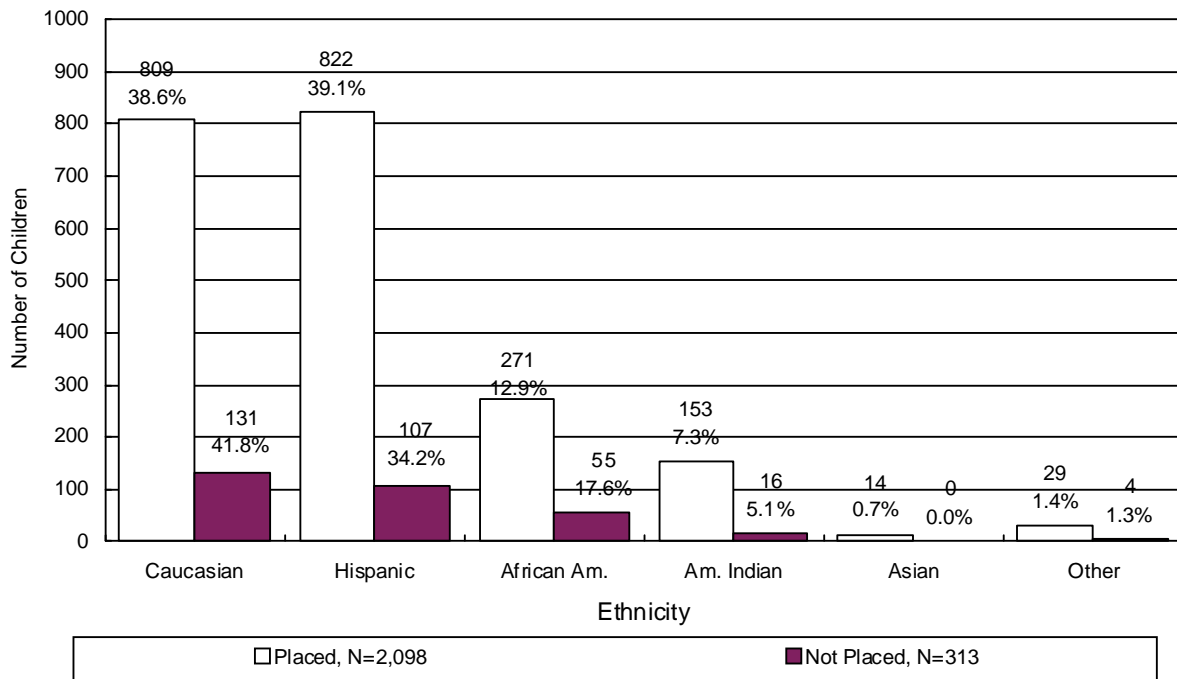
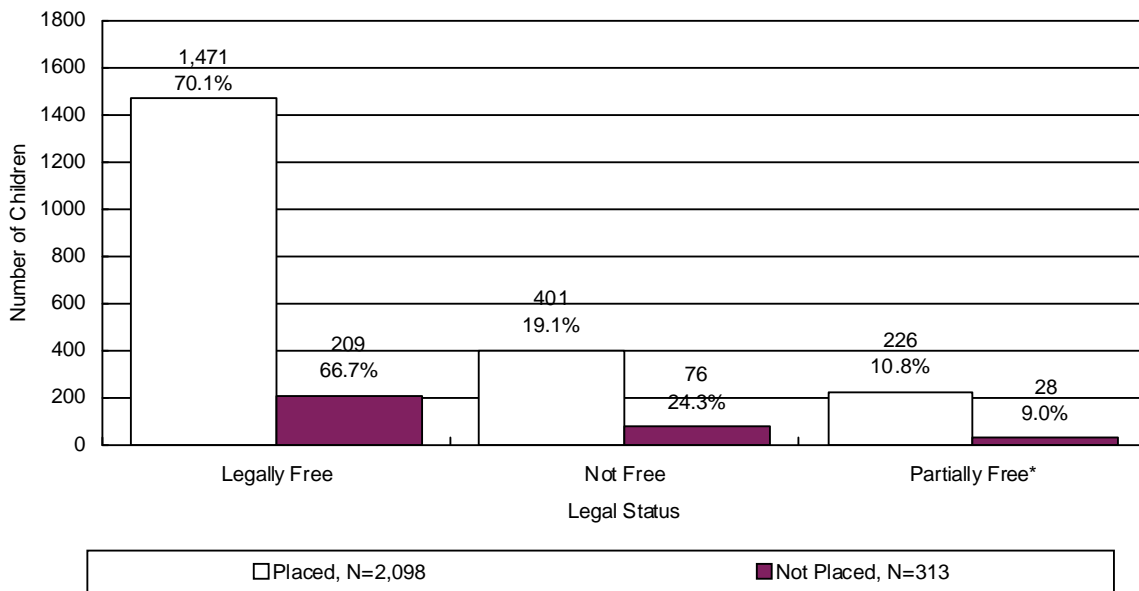
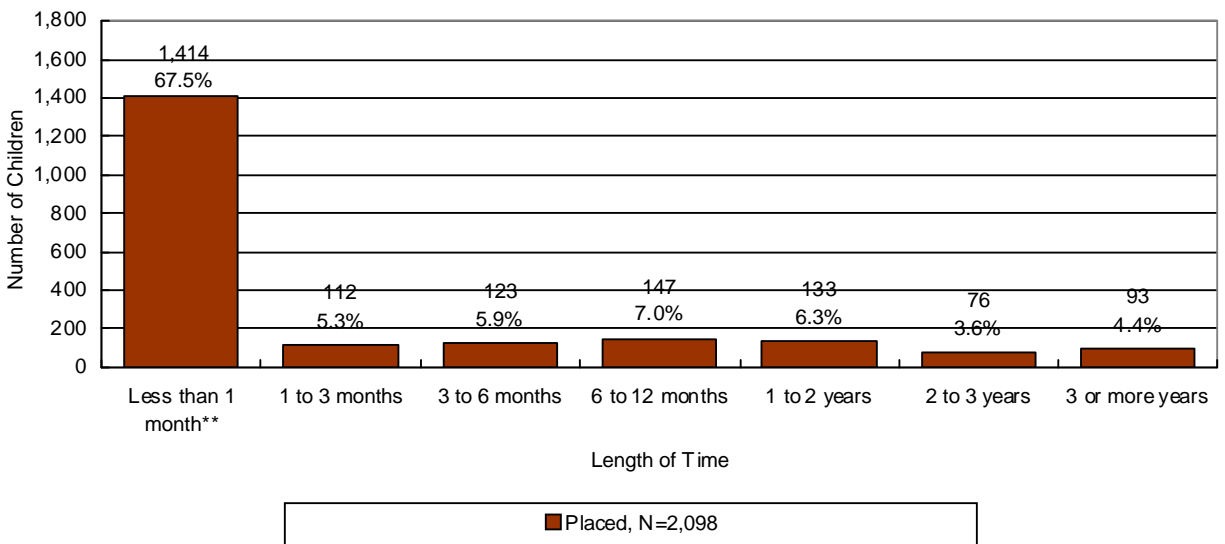


CHART 38
THE PLACEMENT AND NUMBER OF CHILDREN WITH A CASE PLAN GOAL OF ADOPTION BY LEGAL STATUS



*Partially free refers to a situation where only one of the parent's rights has been severed.

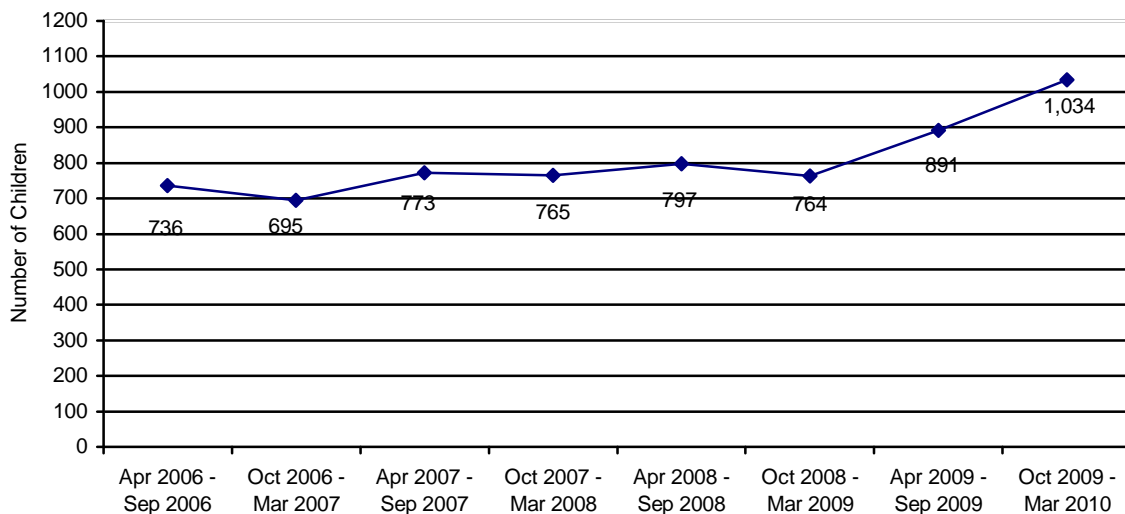
CHART 39
THE NUMBER OF CHILDREN WITH A CASE PLAN GOAL OF ADOPTION BY LENGTH OF TIME FROM CHANGE OF CASE PLAN GOAL OF ADOPTION TO ADOPTIVE PLACEMENT



**About 70 percent of children are adopted by relatives or their foster parents and are already in their prospective adoptive placement at the time the case plan goal changes to adoption.

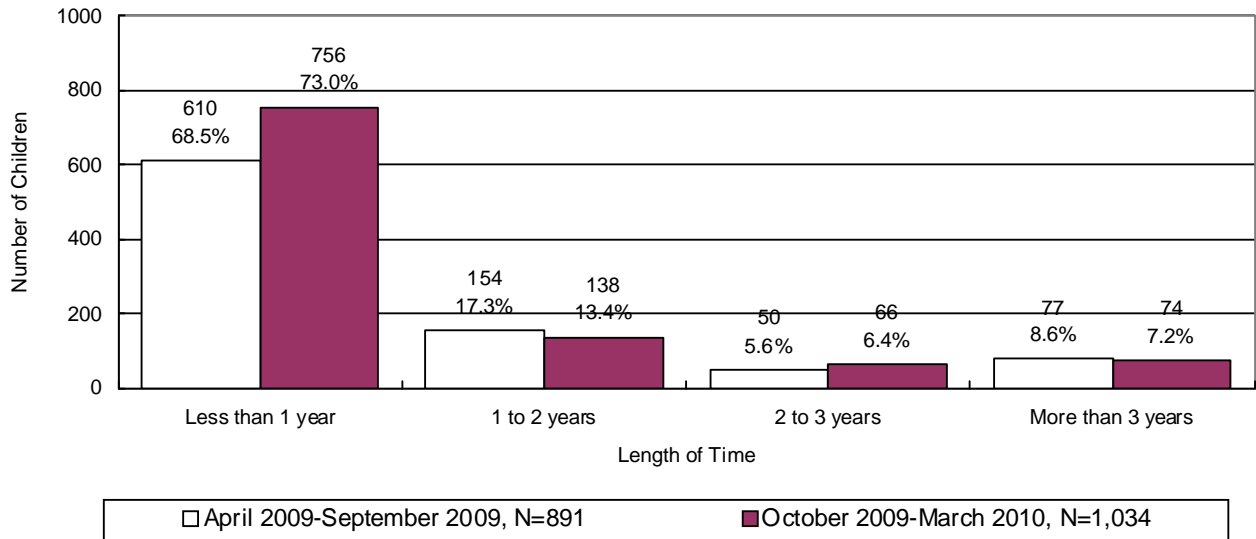
ADOPTIVE SERVICES

CHART 40
THE NUMBER OF CHILDREN WITH A FINALIZED ADOPTION



There were 1,034 children with a finalized adoption during the reporting period. Chart 41 displays the number of children with a finalized adoption during the reporting period by the average length of time in out-of-home placement before adoptive placement.

CHART 41
THE NUMBER AND PERCENTAGE OF CHILDREN WITH A FINALIZED ADOPTION BY
AVERAGE LENGTH OF TIME IN OUT-OF-HOME PLACEMENT BEFORE ADOPTIVE
PLACEMENT



The chart below displays the number of children with a finalized adoption by average length of time in adoptive placement before the final order of adoption.

CHART 42
THE NUMBER AND PERCENTAGE OF CHILDREN WITH A FINALIZED ADOPTION BY
AVERAGE LENGTH OF TIME IN ADOPTIVE PLACEMENT BEFORE THE FINAL ORDER
OF ADOPTION

