



**Douglas A. Ducey**  
Governor

**Gregory McKay**  
Director

December 31, 2015

The Honorable Douglas A. Ducey  
Governor of Arizona  
1700 West Washington  
Phoenix, Arizona 85005

Re: Semi-Annual Child Welfare Reporting Requirements

Dear Governor Ducey:

Pursuant to A.R.S. § 8-526, the Arizona Department of Child Safety (DCS) submits the enclosed semi-annual report on child welfare for the period of April 1, 2015 through September 30, 2015. This report provides information relative to reports of child abuse and neglect, investigations, shelter and receiving home services, foster homes, length of care, and adoptions.

If you have any questions, please contact me at (602) 255-2500.

Sincerely,

A handwritten signature in black ink, appearing to read "Gregory McKay".

Gregory McKay  
Director

Enclosure

cc: President Andy Biggs, Arizona State Senate  
Speaker David M. Gowan Sr., Arizona State House of Representatives  
Senator Nancy Barto, Chairman, Senate Health and Human Services Committee  
Representative John M. Allen, Chairman, House Children and Family Affairs Committee  
Secretary of State Michele Reagan  
Kirk Adams, Chief of Staff, Office of the Governor  
Joan Clark, Director, Arizona State Library, Archives, and Public Records  
Lorenzo Romero, Director, Governor's Office of Strategic Planning and Budgeting  
Laura Johnson, Budget Manager, Governor's Office of Strategic Planning and Budgeting  
Christina Corieri, Health and Human Services Policy Advisor, Office of the Governor  
John Johnson, Division Chief Council, Child and Family Protection Division, Office of the  
Attorney General  
Emily Mercado, Analyst, Senate Health and Human Services Committee  
Ingrid Garvey, Analyst, House Children and Family Affairs Committee  
Wendy Baldo, Chief of Staff, Senate Majority Caucus  
Melissa Taylor, Senior Policy and Operations Advisor, Senate Majority Caucus  
Patsy Osmon, Policy Advisor, Senate Democratic Caucus  
Leslie Sorensen, Deputy Chief of Staff/Staff Attorney, House Majority Caucus  
Ryan Sullivan, Policy Advisor, House Majority Caucus  
Cynthia Aragon, Policy Advisor, House Democratic Caucus  
Representative Kate Brophy McGee, Arizona State House of Representatives

# **CHILD WELFARE REPORTING REQUIREMENTS**

## **SEMI-ANNUAL REPORT**

**FOR THE PERIOD OF**

**APRIL 1, 2015 THROUGH SEPTEMBER 30, 2015**



**ARIZONA REVISED STATUTES**

**[LAWS 2011, CHAPTER 147]**

**ARIZONA DEPARTMENT OF CHILD SAFETY**

**CHILD WELFARE REPORTING REQUIREMENTS**

Arizona Revised Statute § 8-526 requires the Arizona Department of Child Safety (DCS) to compile information and produce a semi-annual report for the periods ending on March 31<sup>st</sup> and September 30<sup>th</sup> of each year regarding Child Welfare Services. This report is for the semi-annual reporting period beginning on April 1, 2015 and ending September 30, 2015.

**TABLE OF CONTENTS**

(Reporting period: April 1, 2015 through September 30, 2015)

	<u>Page</u>
<b>EXECUTIVE SUMMARY</b> .....	4
<b>SEMI-ANNUAL COMPARISONS</b> .....	7
<b>REPORTS OF CHILD ABUSE AND NEGLECT</b>	
Reports by reporting period and type of child maltreatment – statewide data.....	8-9
Sample communications to hotline, not meeting definition of a report.....	10
Reports received by priority - statewide data.....	11
Number of reports received by priority – county specific data.....	12
Number of reports received by maltreatment – statewide data.....	13
Number of reports received by maltreatment – county specific data.....	14
<b>ASSIGNMENT OF INVESTIGATIONS</b>	
Reports assigned for investigation by priority – statewide data.....	15
Reports assigned for investigation by priority – county specific data.....	16
Reports assigned for investigation by type of maltreatment – statewide data.....	17
Reports assigned for investigation by type of maltreatment – county specific data.....	18
<b>INVESTIGATIONS OF CHILD ABUSE AND NEGLECT</b>	
Reports not responded to by priority – county specific data.....	19-20
Investigations by priority – investigation open – statewide data.....	21
Investigations by priority – investigation open – county specific data.....	22
Investigations by type of child maltreatment – investigation open – statewide data.....	22
Investigations by type of child maltreatment – investigation open – county specific data.....	23
Reports where removal occurred – county specific data.....	24-25
<b>COMPLETED INVESTIGATIONS</b>	
Substantiation rate by reporting period.....	25-26
Investigations by priority – proposed substantiated reports – statewide data.....	27
Investigations by priority – proposed substantiated reports – county specific data.....	27-28
Investigations by type of child maltreatment – proposed substantiated reports – statewide data.....	28
Investigations by type of child maltreatment – proposed substantiated reports – county specific data.....	29
Investigations by priority – substantiated reports – statewide data.....	30

**TABLE OF CONTENTS (continued)**  
 (Reporting period: April 1, 2015 through September 30, 2015)

	<u>Page</u>
Investigations by priority – substantiated reports county specific data.....	30-31
Investigations by type of child maltreatment – substantiated reports – statewide data.....	31
Investigations by type of child maltreatment – substantiated reports – county specific data.....	32
Investigations by priority – unsubstantiated reports – statewide data.....	33
Investigations by priority – unsubstantiated reports – county specific data.....	33-34
Investigations by type of child maltreatment – unsubstantiated reports – statewide data..	34
Investigations by type of child maltreatment – unsubstantiated reports – county specific data.....	35
 <b>SAFE HAVEN INFANTS</b>	
Number of Safe Haven infants delivered during reporting period.....	36
 <b>CHILDREN ENTERING OUT-OF-HOME CARE</b>	
Total children entering out-of-home care.....	36
New entries by county – children under 18 years voluntary placement.....	36-37
New entries by county.....	38-39
New entries – statewide data.....	40
 <b>CHILDREN IN OUT-OF-HOME CARE</b>	
Children in out-of-home care by reporting period.....	41
All children in care by age and ethnicity.....	42
All children in care by case plan goal and placement type.....	43
All children in care by placement type and age.....	44
Children in shelter or receiving homes for more than 21 days.....	45
Children in out-of-home care by length of time in care.....	45
Children in out-of-home care by legal status.....	46
Children receiving and not receiving required visitation.....	47
 <b>FOSTER HOME LICENSING, CLOSURES, AND VISITATIONS</b>	
Foster homes licensed.....	48
Child bed spaces available.....	48
Foster homes closed and reason for closure .....	48
Number of foster homes receiving the required visitation.....	49
 <b>CHILDREN EXITING OUT-OF-HOME CARE</b>	
Semi-Annual comparisons of total number exiting care – for all reasons.....	50
Total number exiting care.....	51
Total number exiting care – for reason of reunification with parents.....	52
Total number exiting care – for reason of living with other relatives.....	53
Total number exiting care – for reason of adoption.....	54
Total number exiting care – for reason of guardianship.....	55

**TABLE OF CONTENTS (continued)**  
 (Reporting period: April 1, 2015 through September 30, 2015)

	<u>Page</u>
Total number exiting care – for reason of reaching age of majority.....	56
Total number exiting care – for reason of transfer to another agency.....	57
Total number exiting care – for reason of runaway.....	58
Total number exiting care – for reason of death of child.....	59
Total number exiting care – by cause of death.....	60
Total number exiting for reason of death of child – with alleged abuse.....	60
 <b>CHILDREN WITH CASE PLAN GOALS OF ADOPTION</b>	
Number of children with a petition for termination of parental rights.....	61
The placement and number of children with case plan goals of adoption by age.....	61
The placement and number of children with case plan goals of adoption by ethnicity.....	62
The placement and number of children with case plan goals of adoption by legal status..	62-63
Number of children – length of time from change of case plan goals of adoption to adoptive placement.....	64
Number of children in an adoptive placement by the marital status of the adoptive parent.....	64
Number of children in an adoptive placement by the relationship of the adoptive parent.....	65
 <b>DISRUPTIONS</b>	
Number of children with a case plan goal of adoption in an adoptive placement and disrupted by age and ethnicity.....	65
Number of children with a case plan goal of adoption in an adoptive placement and disrupted by the marital status of the adoptive parent.....	66
Number of children with a case plan goal of adoption in an adoptive placement and disrupted by the relationship of the adoptive parent.....	66
 <b>ADOPTIVE SERVICES</b>	
Number of children with a finalized adoption.....	67
Number of children with a finalized adoption by average length of time in out-of-home placement before adoptive placement.....	67
Number of children with a finalized adoption by average length of time in adoptive placement before the final order of adoption.....	68
Number of Children with a finalized adoption by the marital status of the adoptive parent.....	68
Number of children with a finalized adoption by the relationship of the adoptive parent.	69

## Executive Summary

The Arizona Department of Child Safety (DCS) is pleased to publish this semi-annual report for April 2015 through September 2015 in compliance with A.R.S. § 8-526. In May 2014, the Department of Child Safety was created as a permanent, stand-alone agency with the express mission of safeguarding Arizona's abused and neglected children.

The data within this Semi-Annual Report assists with identifying areas for continued focus by the Department, stakeholders, policy makers, and advocacy groups. By working collaboratively toward shared goals, targeted resources and strategies will be implemented in a coordinated and purposeful manner, improving safety, permanency and well-being outcomes for children and families.

### Child Abuse Hotline and Investigations

The statewide Child Abuse Hotline received 26,455 calls that met the statutory criteria for a report. Of these, 433 were within the jurisdiction of military or tribal governments and were referred to those jurisdictions. The total number of reports represents a four percent increase over the prior reporting period, and a 5.5 percent increase over the same reporting period last year. The Department continues to experience an increase in neglect reports, while the other maltreatment types have remained steady.

In addition to responding to all reports received in this reporting period, the Department closed more reports (15,076) this reporting period than any other reporting period in the past four years. This was accomplished even though DCS received more reports than it did in any other reporting period in the last four years. This total number of reports closed is limited to reports that were received during the reporting period and subsequently closed. Reports that were received in prior reporting periods and closed within this reporting period are not included in this total.

The DCS Strategic Plan was announced in July 2015 and identified several goals with deliverables for the Hotline and investigations. To date, the Department has completed several deliverables, including, but not limited to:

- Instituted notification to callers to the Hotline about false reporting penalties;
- Hired dedicated audit staff at the Hotline for quality assurance;
- Completed policy analysis on the investigation/assessment of very low risk families;
- Created a new Hotline screening decision-making tool that clarifies report and prioritization requirements;
- Implemented a field guide that facilitates the collection and documentation of safety and risk assessment information;
- Created and implemented supervision guides for investigation and ongoing cases;
- Created a review guide for Assistant Program Managers aligned with the safety; assessment model for use in considered removals;
- Implemented Multidisciplinary Team (MDT) reviews of fatality/near fatality cases;
- Created a data dashboard to monitor open report volume and categorize reports by risk factors; and
- Created a dashboard to track overall investigation case management.

**Children in Out-of-Home Care**

The Department remains committed to working with the community to keep children safe and prevent the need for children to be removed from their homes. Notwithstanding this commitment, the number of children in out-of-home care increased from 17,592 in the prior reporting period to 18,657 in September 2015.

The Department continues to make efforts to place children who have been removed from their home in the most family-like setting possible. In September 2015, 14,863 children – or approximately 80 percent of all children in out-of-home care – were placed with relatives, licensed foster parents, or trial home visit with a parent. Efforts to increase the number of licensed foster parents who are able to meet the needs of children requiring out-of-home placement resulted in 774 new homes being licensed during the reporting period.

As part of the strategic plan, the Department is striving to improve capacity to place children in family environments and fully meet the needs of children in care and their families. During this reporting period DCS was able to accomplish the following:

- Increased use of Placement Coordinators to identify available kinship placements upon removal;
- Expanded the use of software tools, e.g. Lexis Nexis, to find potential kinship placements;
- Established Fostering Inclusion Respect Support Trust Advisory (FIRST) Commission; and
- Established the Building Resilient Families program to deliver in-home prevention services in Maricopa County for low risk families who have been the subject of a DCS investigation.

The state requires monthly face-to-face visitation with children in foster care. The current report shows that 84.4 percent of the children in foster care received their visitation during the last month of the reporting period. There is a strong correlation between caseworker visits with children and positive outcomes for these children, such as achieving permanency and other indicators of child well-being. The Department continues to make efforts to improve our rate of visitation.

**Permanency for Children**

Arizona is a national leader in the number of finalized adoptions. The Department remains committed to work toward achieving permanency for children placed in out-of-home care as demonstrated by increasing the total number of children achieving permanency through adoption. This number increased by two percent, from 1,576 during this reporting period compared to 1,552 during the same reporting period last year.

The Department demonstrated a significant increase in the number of children safely reunified with their families. 3,102 children exited DCS custody to reunify with their parents or primary caretakers this reporting period compared to 2,636 during the last reporting period, which is an 18% increase.

As part of the Strategic Plan, the Department continues recruitment efforts of foster and adoptive homes. Recently, the Department adjusted foster care reimbursement rates for families who are



willing and capable of providing a home for youth ages 12 to 18 years old and sibling groups in this age group.

**Strategic Goals to Address Challenges**

The Department continues to face both workload and process challenges in its efforts to ensure safety and promote permanency for abused and neglected children. Examples of the more pressing challenges the Department continues to pursue include the increased number of children in out-of-home care, the significant amount of overdue investigations, and the need to improve the hiring and training of qualified personnel. The Department's Strategic Plan represents the leadership's commitment to refocus attention and resources on the safety, permanency, and well-being of children in Arizona. Below are five strategic goals that address several of the most pressing challenges faced by the Department:

1. Improve objective decision-making at the Hotline and investigations.
2. Improve performance and quality of service through employee retention.
3. Reduce length of stay for children in out-of-home care.
4. Reduce recurrence of maltreatment by improving service delivery.
5. Improve capacity to place children in family environments.

As noted previously, the legislation enacted to create the Department included funding to increase the number of child safety specialists. Hiring these specialists during fiscal year 2015 presented a significant challenge to the Department. However, in September 2015 the Department had filled nearly all of its budgeted positions for child safety specialists, including staff at the Hotline.

The Department continues to assess processes and program controls to identify ways to address these challenges. Solutions will include partnering with the community and stakeholders to ensure that the safety and wellbeing of the children is always the top priority. The Department continues to work in partnership with the federal government to meet the federal Child and Family Service Review (CFSR) standards to improve outcomes for the children and families it serves.

The Department previously included three charts that were not required by A.R.S. § 8-526. In order to better align this report with the requirements of the statute, the Department is not including these charts anymore. Information on the number of children in care by placement type and by age is still included in Table 33 of this report.

Semi-Annual Comparisons

	Oct 2011 through Mar 2012	Apr 2012 through Sep 2012	Oct 2012 through Mar 2013	Apr 2013 through Sep 2013	Oct 2013 through Mar 2014	Apr 2014 through Sep 2014	Oct 2014 through Mar 2015	Apr 2015 through Sep 2015
Number of Reports Received	20,466	21,625	22,161	22,032	22,956	25,076	25,508	26,455
Number of Reports Substantiated <sup>1</sup>	2,748	2,809	2,588	2,704	3,190	3,456	3,535	1,926
Substantiation Rate	14%	14%	13%	12%	14%	14%	14%	7%
Number of Reports Investigated & Closed	10,345	9,168	10,923	11,212	11,392	12,038	13,045	15,076
Number of Reports Responded to	19,274	20,413	20,253	20,122	22,162	24,435	25,182	26,022
Number of new removals	4,968	5,716	5,101	5,702	5,701	6,461	5,935	6,819
Number of new removals with Voluntary under 18	150	116	97	118	90	189	131	154
Number of Children in Out-of-Home Care on the Last Day of Reporting Period	12,453	14,111	14,314	15,037	15,751	16,990	17,592	18,657
Number of Children in Shelter for More than 21 Days	713	764	792	824	802	868	900	878
Number and Percentage of Children Receiving Visitation In the Last Month of Reporting Period	9,728 (78.1%)	10,404 (73.7%)	12,101 (84.5%)	12,997 (86.4%)	13,818 (87.7%)	14,846 (87.4%)	15,323 (87.1%)	15,746 (84.4%)
Number and Percentage of Children not Receiving Visitation	2,725 (21.9%)	3,707 (26.3%)	2,213 (15.5%)	2,040 (13.6%)	1,933 (12.3%)	2,144 (12.6%)	2,269 (12.9%)	2,911 (15.6%)
Number and Percentage of Parents Receiving Visitation	1,081 (57.1%)	1,017 (51.2%)	1,058 (50.9%)	1,157 (52.4%)	1,344 (53.8%)	1,315 (52.0%)	1,372 (55.7%)	1,576 (50.9%)
Number of Licensed Foster Homes <sup>2</sup>	3,480	3,748	3,516	3,900	4,329	4,397	4,497	4,551
Number of Foster Home Spaces Available to DCS	8,572	7,716	8,579	8,573	9,049	9,061	9,079	9,114
Number of New Foster Homes	663	999	722	717	1,050	756	821	774
Number of Foster Homes Closed	679	747	740	715	787	822	785	767
Number and Percentage of Foster Homes Receiving Visitation In the Last Qtr. Of Reporting Period	3,132 (79.9%)	3,095 (82.6%)	3,316 (92.7)	3,491 (89.5%)	3,689 (85.2%)	3,949 (89.8%)	3,881 (86.3%)	3,925 (86.2%)
Number and Percentage of Foster Homes not Receiving Visitation	790 (20.1)	653 (17.4%)	260 (7.3%)	409 (10.5%)	640 (14.8%)	448 (10.2%)	616 (13.7%)	626 (13.8%)
Number of Children Leaving DCS Custody	3,826	3,923	4,668	4,805	4,786	5,042	5,063	5,555
Number of Children With a Case Plan Goal of Adoption	2,663	2,719	2,852	3,311	3,417	3,377	3,449	3,878
Number of Children With a Finalized Adoption	1,224	1,025	1,270	1,215	1,518	1,552	1,629	1,576

<sup>1</sup> Since the appeals process delays the substantiation of reports, revisions to the substantiation rate for the prior reporting period will occur with every semi-annual report produced.

<sup>2</sup> The number of available foster homes includes homes reported by the Department's Home Recruitment, Study and Supervision contractors along with foster homes utilized for appropriate children in coordination with the Division of Developmental Disabilities.

**Reports of Child Abuse & Neglect**

Child abuse and neglect are defined in A.R.S. §8-201 and A.R.S. §13-3623 (A). These definitions provide the major categories in this report.

Between April 1, 2015 through September 30, 2015, there were 26,455 incoming communications to the Child Abuse Hotline that met the criteria for a report of abuse or neglect. Of these, 433 were within the jurisdiction of military or tribal governments and were referred to those jurisdictions. Compared to one year ago, there has been a 5.5 percent increase in reports received by the Child Abuse Hotline meeting the criteria of a report of abuse or neglect.

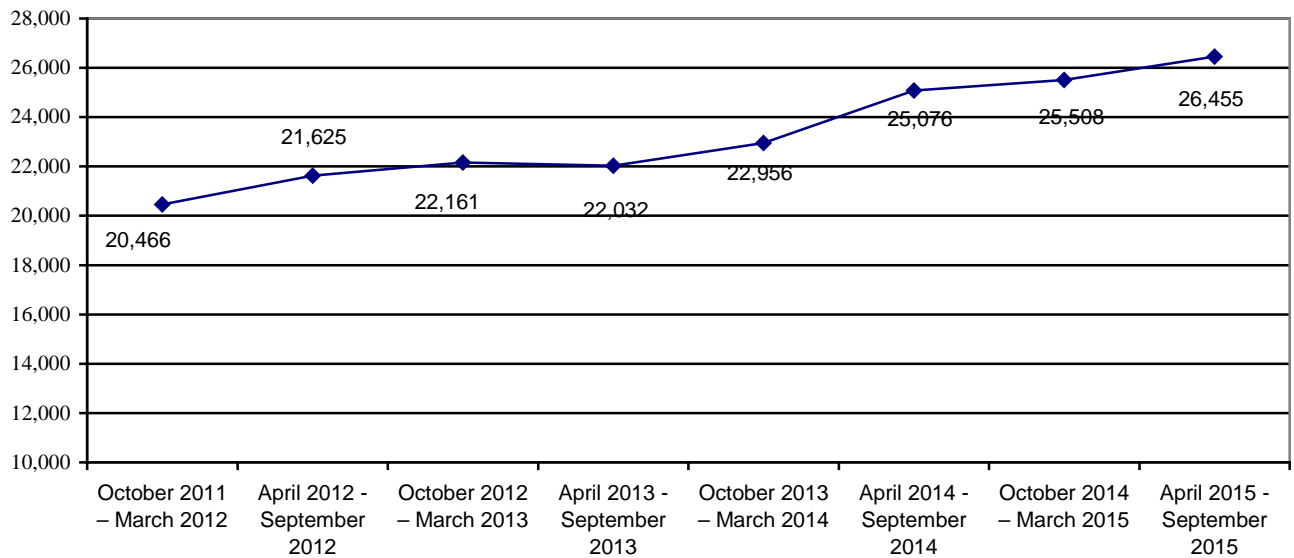
Table 1 shows the number of reports received by the Department by category of maltreatment for the current and past reporting periods. One consistent trend is the increase in the proportion of reports that meet the criteria of neglect. In accordance with Strategic Plan, the Department is examining current Child Abuse Hotline policies and procedures to improve objectivity within screening tools and improve inter-rater reliability.

**TABLE 1  
REPORTS BY REPORTING PERIOD AND TYPE OF MALTREATMENT**

	Neglect	Physical Abuse	Sexual Abuse	Emotional Abuse	Total
October 2011 – March 2012	13,369 65.3%	6,198 30.3%	739 3.6%	160 0.8%	20,466 100.0%
April 2012 – September 2012	14,722 68.1%	5,974 27.6%	764 3.5%	165 0.8%	21,625 100.0%
October 2012 – March 2013	14,916 67.2%	6,263 28.3%	815 3.7%	167 0.8%	22,161 100.0%
April 2013 – September 2013	15,560 70.6%	5,607 25.5%	731 3.3%	134 0.6%	22,032 100.0%
October 2013 – March 2014	15,766 68.7%	6,248 27.2%	772 3.4%	170 0.7%	22,956 100.0%
April 2014 – September 2014	18,022 71.9%	6,074 24.2%	847 3.4%	133 0.5%	25,076 100.0%
October 2014 – March 2015	18,338 71.9%	6,254 24.5%	787 3.1%	129 0.5%	25,508 100.0%
April 2015 – September 2015	19,276 72.9%	6,086 23.0%	954 3.6%	139 0.5%	26,455 100.0%

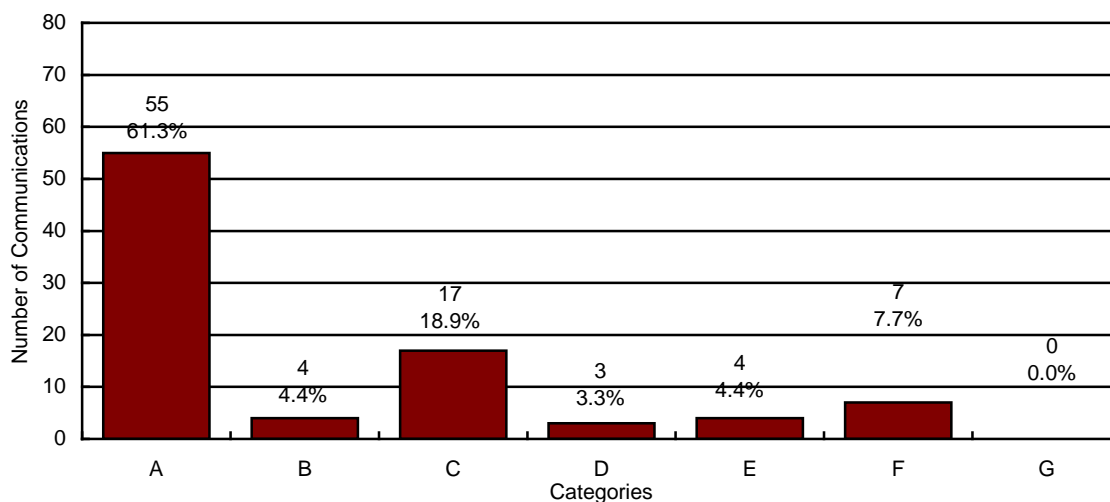
Chart 1 illustrates that the number of reports received by the Centralized Intake Hotline has increased by 1,379 reports over the same reporting period last year. The chart below also shows that the significant upward trend in reports received by the Centralized Intake Hotline has continued since FY 2012. This in turn resulted in more children entering out-of-home care (see Chart 18 for information on the out-of-home population).

**CHART 1  
REPORTS OF CHILD ABUSE AND NEGLECT BY REPORTING PERIOD**



The Centralized Intake Hotline received a total of 78,531 calls during the reporting period. Of those, 75,482 were answered by a Hotline specialist and 2,658, or 3.5 percent, were abandoned calls. The 75,482 yielded 49,027 communications (includes calls, court orders, online submissions, mail, faxes and/or emails) and 26,455 reports of abuse and neglect. Communications do not meet the statutory criteria of a report of maltreatment. A random sample of communications was reviewed to identify the types of calls that do not get classified as reports of abuse and neglect. The results of this review are contained in the chart below.

**CHART 2**  
**SAMPLE OF COMMUNICATIONS TO THE CENTRALIZED INTAKE HOTLINE THAT DO NOT MEET THE STATUTORY REQUIREMENTS OF A REPORT OF ABUSE OR NEGLECT**



N=90

- A = Concern Only/No Allegation of Child Abuse or Neglect**
- B = Out of DCS Jurisdiction**
- C = Call Appropriate for Law Enforcement Jurisdiction<sup>3</sup>**
- D = Non-Caretaker Neglect/Child No Longer at Risk**
- E = Insufficient Information**
- F = Truancy/Custody Issues**
- G = Current Case Questions or Referrals**

All communications that do not meet the statutory requirements for a field investigation of abuse or neglect are reviewed by supervisors or program specialists at the Hotline.

<sup>3</sup> The category “Call Appropriate for Law Enforcement Jurisdiction” refers to a situation where the alleged perpetrator is not a parent or primary caretaker and the allegations, if true, would constitute a crime.

Chart 3 below provides information on the number of reports that met each of the Centralized Intake Hotline priority classifications in the current and past reporting periods. In Table 2 and Table 3, data on total reports by priority is shown by county for the current and previous reporting periods. The priority determinations are made by personnel at the child abuse hotline after the review of multiple factors, however, below is a high level summary of each response time criteria.

**PRIORITY 1:** Present danger refers to an immediate, significant and clearly observable family condition present now that has resulted in or is likely to result in serious or severe harm requiring an immediate initial response.

**PRIORITY 2:** Impending danger may not be occurring in the present but is likely to occur in the immediate to near future and will likely result in serious or severe harm to a child.

**PRIORITY 3:** Reports that do not rise to the level of present or impending danger, but there is an incident of abuse or neglect that has happened in the past 30 days. This includes a current minor injury to the child.

**PRIORITY 4:** Reports that do not rise to the level of present or impending danger, but 1) there is an incident of abuse or neglect that happened more than 30 days ago, or 2) the date of last occurrence is unknown and there is no current physical indicator of maltreatment, or 3) there is unreasonable risk of harm to the child’s health or welfare.

**CHART 3  
NUMBER OF REPORTS RECEIVED BY PRIORITY**



**TABLE 2**  
**NUMBER OF REPORTS RECEIVED BY PRIORITY AND COUNTY FOR PERIOD OF**  
**APRIL 1, 2015 THROUGH SEPTEMBER 30, 2015**

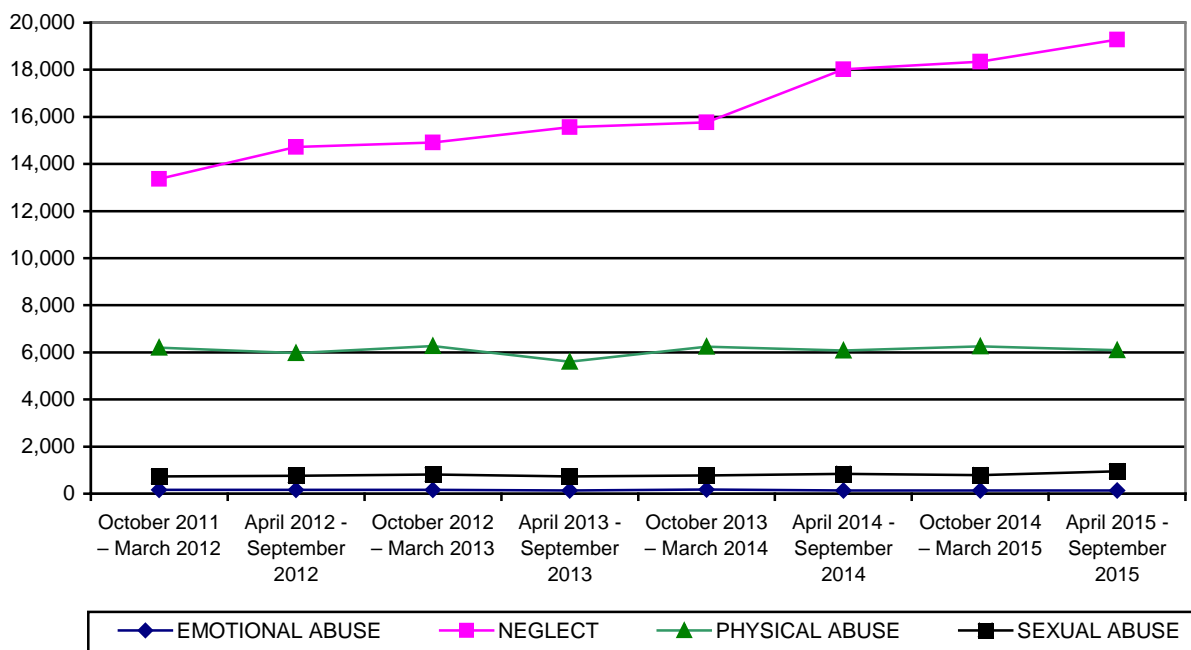
COUNTY	PRIORITY 1	PRIORITY 2	PRIORITY 3	PRIORITY 4	TOTAL	% OF TOTAL
APACHE	31	20	44	30	125	0.5%
COCHISE	78	95	217	58	448	1.7%
COCONINO	89	73	165	81	408	1.5%
GILA	70	65	98	42	275	1.0%
GRAHAM	38	38	64	37	177	0.7%
GREENLEE	0	0	0	0	0	0.0%
LA PAZ	18	21	35	14	88	0.3%
MARICOPA	3,014	2,736	6,201	3,621	15,572	58.9%
MOHAVE	175	190	350	176	891	3.4%
NAVAJO	114	80	177	114	485	1.8%
PIMA	780	913	2,154	964	4,811	18.2%
PINAL	311	327	700	378	1,716	6.5%
SANTA CRUZ	33	19	65	77	194	0.7%
YAVAPAI	101	146	308	159	714	2.7%
YUMA	110	94	239	108	551	2.1%
STATEWIDE	4,962	4,817	10,817	5,859	26,455	100.0%
% OF TOTAL	18.8%	18.2%	40.8%	22.2%	100.0%	

**TABLE 3**  
**NUMBER OF REPORTS RECEIVED BY PRIORITY AND COUNTY FOR PERIOD OF**  
**OCTOBER 1, 2014 THROUGH MARCH 31, 2015**

COUNTY	PRIORITY 1	PRIORITY 2	PRIORITY 3	PRIORITY 4	TOTAL	% OF TOTAL
APACHE	19	14	33	22	88	0.3%
COCHISE	74	103	164	58	399	1.6%
COCONINO	98	91	229	86	504	2.0%
GILA	34	54	65	32	185	0.7%
GRAHAM	31	36	65	48	180	0.7%
GREENLEE	3	0	4	3	10	<0.1%
LA PAZ	20	10	21	16	67	0.3%
MARICOPA	2,885	2,872	6,182	3,242	15,181	59.4%
MOHAVE	145	176	308	133	762	3.0%
NAVAJO	82	92	131	90	395	1.6%
PIMA	782	868	2,099	944	4,693	18.4%
PINAL	313	316	688	354	1,671	6.6%
SANTA CRUZ	17	16	52	64	149	0.6%
YAVAPAI	114	126	325	164	729	2.9%
YUMA	83	105	216	91	495	1.9%
STATEWIDE	4,700	4,879	10,582	5,347	25,508	100.0%
% OF TOTAL	18.4%	19.1%	41.5%	21.0%	100.0%	

The following chart and tables provide the number of reports categorized by type of maltreatment. The total number of reports received by type of maltreatment is displayed in Chart 4. In Table 4 and Table 5, data on the total reports by type of maltreatment is shown by county for the current and previous reporting periods.

**CHART 4  
NUMBER OF REPORTS RECEIVED BY TYPE OF MALTREATMENT**



**TABLE 4  
NUMBER OF REPORTS RECEIVED BY TYPE OF MALTREATMENT AND COUNTY FOR PERIOD OF APRIL 1, 2015 THROUGH SEPTEMBER 30, 2015**

COUNTY	EMOTIONAL ABUSE	NEGLECT	PHYSICAL ABUSE	SEXUAL ABUSE	TOTAL	% OF TOTAL
APACHE	0	98	21	6	125	0.5%
COCHISE	1	320	107	20	448	1.7%
COCONINO	2	302	85	19	408	1.5%
GILA	2	221	42	10	275	1.0%
GRAHAM	2	128	40	7	177	0.7%
GREENLEE	0	0	0	0	0	0.0%
LA PAZ	0	68	18	2	88	0.3%
MARICOPA	79	11,182	3,740	571	15,572	58.9%
MOHAVE	3	667	189	32	891	3.4%
NAVAJO	3	385	77	20	485	1.8%
PIMA	33	3,598	1,045	135	4,811	18.2%
PINAL	8	1,235	408	65	1,716	6.5%
SANTA CRUZ	1	134	46	13	194	0.7%
YAVAPAI	2	536	136	40	714	2.7%
YUMA	3	402	132	14	551	2.1%
STATEWIDE	139	19,276	6,086	954	26,455	100.0%
% OF TOTAL	0.5%	72.9%	23.0%	3.6%	100.0%	



**TABLE 5  
NUMBER OF REPORTS RECEIVED BY TYPE OF MALTREATMENT AND COUNTY FOR  
PERIOD OF OCTOBER 1, 2014 THROUGH MARCH 31, 2015**

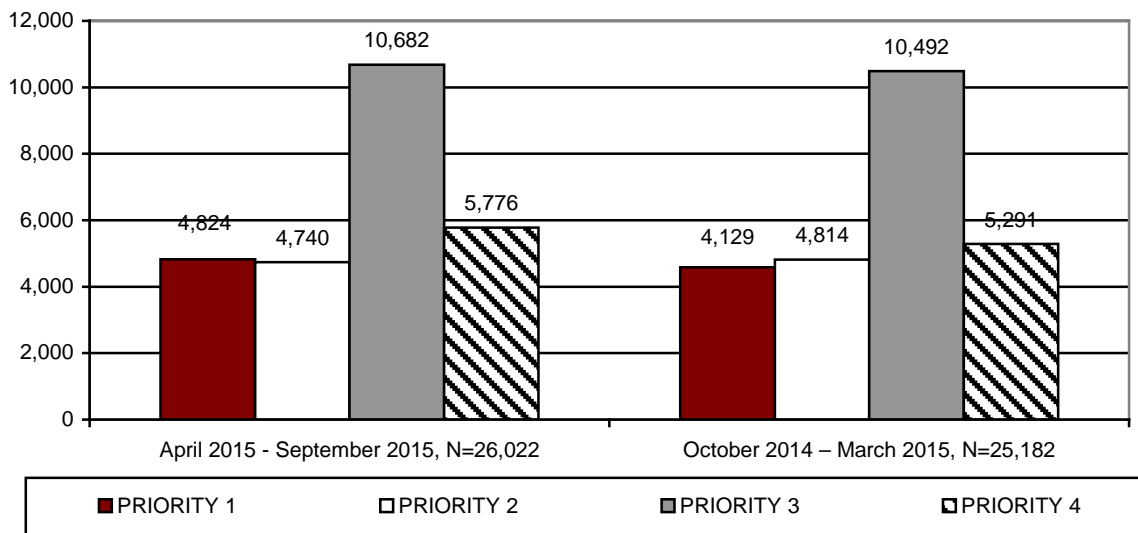
COUNTY	EMOTIONAL ABUSE	NEGLECT	PHYSICAL ABUSE	SEXUAL ABUSE	TOTAL	% OF TOTAL
APACHE	1	58	26	3	88	0.3%
COCHISE	1	285	95	18	399	1.6%
COCONINO	3	332	142	27	504	2.0%
GILA	1	142	36	6	185	0.7%
GRAHAM	1	132	39	8	180	0.7%
GREENLEE	0	7	3	0	10	<0.1%
LA PAZ	0	59	6	2	67	0.3%
MARICOPA	77	10,777	3,843	484	15,181	59.4%
MOHAVE	4	569	171	18	762	3.0%
NAVAJO	2	302	85	6	395	1.6%
PIMA	26	3,461	1,086	120	4,693	18.4%
PINAL	9	1,213	399	50	1,671	6.6%
SANTA CRUZ	0	98	43	8	149	0.6%
YAVAPAI	0	537	171	21	729	2.9%
YUMA	4	366	109	16	495	1.9%
STATEWIDE	129	18,338	6,254	787	25,508	100.0%
% OF TOTAL	0.5%	71.9%	24.5%	3.1%	100.0%	

**ASSIGNMENT OF INVESTIGATIONS**

During the current reporting period, there were 26,455 calls to the Hotline that met the statutory criteria for a report. Of those, 433 reports fell within the jurisdiction of military or tribal governments. All reports had response data entered at the time this report was compiled. The assignment of the remaining 26,022 reports for investigation is report in this section.

The tables and charts in this section provide statewide and county level information on these reports assigned to DCS. Of these, DCS completed 15,076 (57.9%) of their assigned investigations. Those not completed remain open when the investigation is still in process, when the specialist is waiting for the results of a law enforcement investigation and/or receipt of records that impact the investigation finding, or when the investigation has been completed but is awaiting supervisory review and approval.

**CHART 5  
NUMBER OF REPORTS ASSIGNED FOR INVESTIGATION BY PRIORITY AND REPORTING PERIOD**



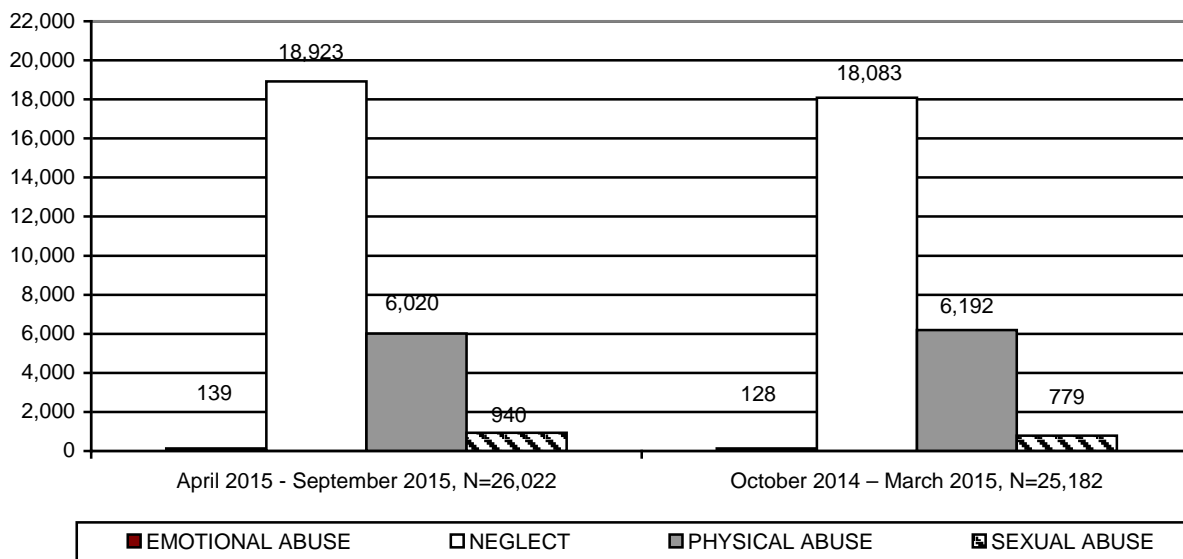
**TABLE 6**  
**NUMBER OF REPORTS ASSIGNED FOR INVESTIGATION BY PRIORITY AND COUNTY**  
**FOR PERIOD OF APRIL 1, 2015 THROUGH SEPTEMBER 30, 2015**

COUNTY	PRIORITY 1	PRIORITY 2	PRIORITY 3	PRIORITY 4	TOTAL	% OF TOTAL
APACHE	24	16	28	19	87	0.3%
COCHISE	78	95	217	58	448	1.7%
COCONINO	68	63	142	71	344	1.3%
GILA	52	57	87	34	230	0.9%
GRAHAM	32	35	58	33	158	0.6%
GREENLEE	0	0	0	0	0	0.0%
LA PAZ	11	15	24	12	62	0.2%
MARICOPA	3,000	2,725	6,191	3,615	15,531	59.8%
MOHAVE	170	188	349	174	881	3.4%
NAVAJO	80	69	150	96	395	1.5%
PIMA	771	903	2,141	957	4,772	18.3%
PINAL	298	320	687	366	1,671	6.4%
SANTA CRUZ	33	19	65	77	194	0.8%
YAVAPAI	99	141	304	156	700	2.7%
YUMA	108	94	239	108	549	2.1%
STATEWIDE	4,824	4,740	10,682	5,776	26,022	100.0%
% OF TOTAL	18.5%	18.2%	41.1%	22.2%	100.0%	

**TABLE 7**  
**NUMBER OF REPORTS ASSIGNED FOR INVESTIGATION BY PRIORITY AND COUNTY**  
**FOR PERIOD OF OCTOBER 1, 2014 THROUGH MARCH 31, 2015**

COUNTY	PRIORITY 1	PRIORITY 2	PRIORITY 3	PRIORITY 4	TOTAL	% OF TOTAL
APACHE	11	9	23	14	57	0.2%
COCHISE	74	103	164	58	399	1.6%
COCONINO	78	80	214	76	448	1.8%
GILA	26	50	62	30	168	0.7%
GRAHAM	30	35	61	48	174	0.7%
GREENLEE	3	0	4	3	10	<0.1%
LA PAZ	17	7	18	14	56	0.2%
MARICOPA	2,870	2,864	6,178	3,232	15,144	60.1%
MOHAVE	142	173	308	132	755	3.0%
NAVAJO	57	74	117	78	326	1.3%
PIMA	771	862	2,088	940	4,661	18.5%
PINAL	294	311	672	350	1,627	6.5%
SANTA CRUZ	17	16	52	64	149	0.6%
YAVAPAI	112	126	316	161	715	2.8%
YUMA	83	104	215	91	493	2.0%
STATEWIDE	4,585	4,814	10,492	5,291	25,182	100.0%
% OF TOTAL	18.2%	19.1%	41.7%	21.0%	100.0%	

**CHART 6  
NUMBER OF REPORTS ASSIGNED FOR INVESTIGATION BY TYPE OF MALTREATMENT  
AND REPORTING PERIOD**



**TABLE 8  
NUMBER OF REPORTS ASSIGNED FOR INVESTIGATION BY TYPE OF MALTREATMENT  
AND COUNTY FOR PERIOD OF APRIL 1, 2015 THROUGH SEPTEMBER 30, 2015**

COUNTY	EMOTIONAL ABUSE	NEGLECT	PHYSICAL ABUSE	SEXUAL ABUSE	TOTAL	% OF TOTAL
APACHE	0	69	15	3	87	0.3%
COCHISE	1	320	107	20	448	1.7%
COCONINO	2	253	73	16	344	1.3%
GILA	2	181	37	10	230	0.9%
GRAHAM	2	113	36	7	158	0.6%
GREENLEE	0	0	0	0	0	0.0%
LA PAZ	0	48	12	2	62	0.2%
MARICOPA	79	11,147	3,736	569	15,531	59.8%
MOHAVE	3	659	187	32	881	3.4%
NAVAJO	3	309	66	17	395	1.5%
PIMA	33	3,567	1,039	133	4,772	18.3%
PINAL	8	1,201	398	64	1,671	6.4%
SANTA CRUZ	1	134	46	13	194	0.8%
YAVAPAI	2	522	136	40	700	2.7%
YUMA	3	400	132	14	549	2.1%
STATEWIDE	139	18,923	6,020	940	26,022	100.0%
% OF TOTAL	0.5%	23.1%	23.1%	3.6%	100.0%	

**TABLE 9**  
**NUMBER OF REPORTS ASSIGNED FOR INVESTIGATION BY TYPE OF MALTREATMENT**  
**AND COUNTY FOR PERIOD OF OCTOBER 1, 2014 THROUGH MARCH 31, 2015**

COUNTY	EMOTIONAL ABUSE	NEGLECT	PHYSICAL ABUSE	SEXUAL ABUSE	TOTAL	% OF TOTAL
APACHE	1	35	19	2	57	0.2%
COCHISE	1	285	95	18	399	1.6%
COCONINO	3	291	129	25	448	1.8%
GILA	1	128	33	6	168	0.7%
GRAHAM	1	126	39	8	174	0.7%
GREENLEE	0	7	3	0	10	<0.1%
LA PAZ	0	50	4	2	56	0.2%
MARICOPA	77	10,750	3,835	482	15,144	60.1%
MOHAVE	4	563	170	18	755	3.0%
NAVAJO	1	245	75	5	326	1.3%
PIMA	26	3,437	1,079	119	4,661	18.5%
PINAL	9	1,178	391	49	1,627	6.5%
SANTA CRUZ	0	98	43	8	149	0.6%
YAVAPAI	0	526	168	21	715	2.8%
YUMA	4	364	109	16	493	2.0%
STATEWIDE	128	18,083	6,192	779	25,182	100.0%
% OF TOTAL	0.5%	71.8%	24.6%	3.1%	100.0%	

**INVESTIGATIONS OF CHILD ABUSE AND NEGLECT**

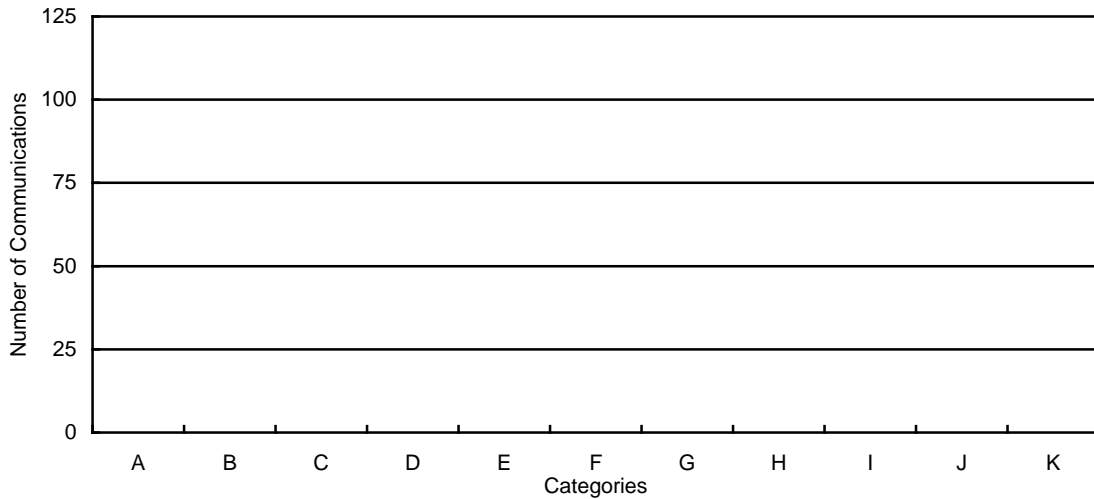
Responding to all reports that come into the Hotline remains a priority to the Department because it is essential to ensuring the safety of children. For the second consecutive reporting period, the Department responded to all reports received during this reporting period. Therefore, no data will be displayed in Table 10 and Chart 7 below.

**TABLE 10  
NUMBER OF REPORTS WITHOUT RESPONSE DATA BY PRIORITY AND COUNTY FOR  
PERIOD OF APRIL 1, 2015 THROUGH SEPTEMBER 30, 2015**

COUNTY	PRIORITY 1	PRIORITY 2	PRIORITY 3	PRIORITY 4	TOTAL	% OF TOTAL
APACHE	0	0	0	0	0	0.0%
COCHISE	0	0	0	0	0	0.0%
COCONINO	0	0	0	0	0	0.0%
GILA	0	0	0	0	0	0.0%
GRAHAM	0	0	0	0	0	0.0%
GREENLEE	0	0	0	0	0	0.0%
LA PAZ	0	0	0	0	0	0.0%
MARICOPA	0	0	0	0	0	0.0%
MOHAVE	0	0	0	0	0	0.0%
NAVAJO	0	0	0	0	0	0.0%
PIMA	0	0	0	0	0	0.0%
PINAL	0	0	0	0	0	0.0%
SANTA CRUZ	0	0	0	0	0	0.0%
YAVAPAI	0	0	0	0	0	0.0%
YUMA	0	0	0	0	0	0.0%
STATEWIDE	0	0	0	0	0	0.0%
% OF TOTAL	0.0%	0.0%	0.0%	0.0%	0.0%	

By statute, a random sample of reports that do not have data on an investigative response in each reporting period is required. In addition, short descriptions of these reports are also required. As all reports were responded to during this period, there is no data to be sampled and displayed in Chart 7.

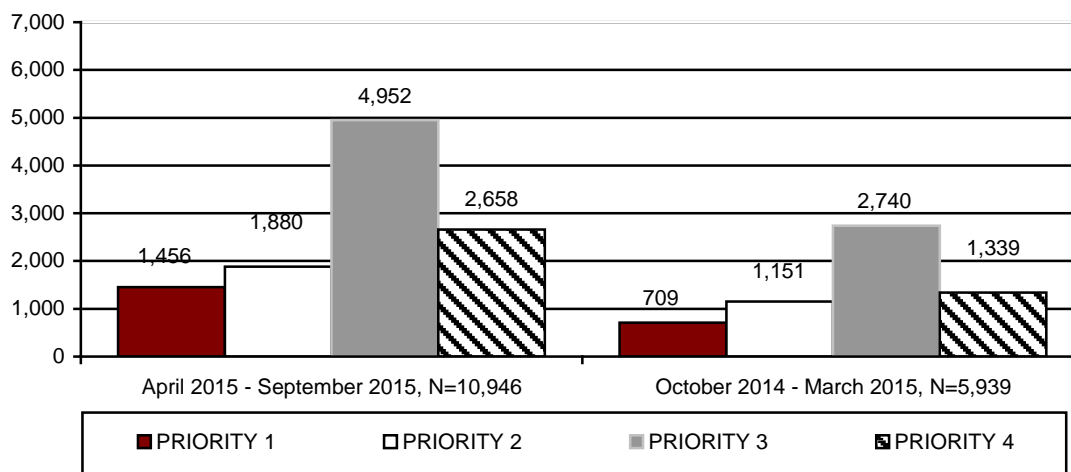
**CHART 7**  
**NUMBER OF REPORTS WITHOUT RESPONSE DATA BY CATEGORY FOR THE PERIOD**  
**OF APRIL 1, 2015 THROUGH SEPTEMBER 30, 2015**



N=0

- A = Adolescent, Past Abuse, No Current Injuries**
- B = Inadequate Housekeeping Standards**
- C = Inappropriate Vehicle Operation**
- D = No Specific Allegations**
- E = Past Abuse no current injuries**
- F = Adolescent, current minor injuries**
- G = Non-adolescent, current minor injuries**
- H = Poor parenting skills**
- I = Left with inappropriate caregiver**
- J = Law Enforcement Issue**
- K = Out of Control Teenager**

**CHART 8**  
**NUMBER OF REPORTS ASSIGNED FOR INVESTIGATION BY PRIORITY AND REPORTING PERIOD FOR REPORTS OPEN FOR INVESTIGATION**



**TABLE 11**  
**NUMBER OF REPORTS BY PRIORITY AND COUNTY FOR REPORTS OPEN FOR INVESTIGATION FOR PERIOD OF APRIL 1, 2015 THROUGH SEPTEMBER 30, 2015**

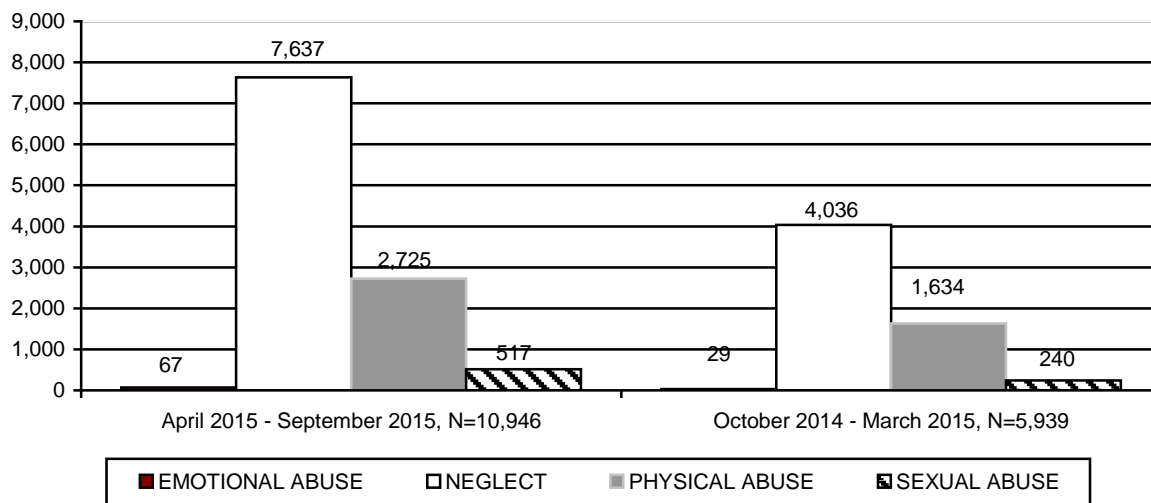
COUNTY	PRIORITY 1	PRIORITY 2	PRIORITY 3	PRIORITY 4	TOTAL	% OF TOTAL
APACHE	0	1	4	4	9	0.1%
COCHISE	48	61	161	44	314	2.9%
COCONINO	16	17	41	21	95	0.9%
GILA	32	47	72	29	180	1.6%
GRAHAM	19	22	39	20	100	0.9%
GREENLEE	0	0	0	0	0	0.0%
LA PAZ	5	5	11	5	26	0.2%
MARICOPA	956	1,230	3,237	1,806	7,229	66.0%
MOHAVE	58	74	169	94	395	3.6%
NAVAJO	3	4	15	7	29	0.3%
PIMA	166	217	629	313	1,325	12.1%
PINAL	84	121	357	151	713	6.5%
SANTA CRUZ	23	11	52	68	154	1.4%
YAVAPAI	28	52	101	67	248	2.3%
YUMA	18	18	64	29	129	1.2%
STATEWIDE	1,456	1,880	4,952	2,658	10,946	100.0%
% OF TOTAL	13.3%	17.2%	45.2%	24.3%	100.0%	



**TABLE 12**  
**NUMBER OF REPORTS BY PRIORITY AND COUNTY FOR REPORTS OPEN FOR INVESTIGATION FOR PERIOD OF OCTOBER 1, 2014 THROUGH MARCH 31, 2015**

COUNTY	PRIORITY 1	PRIORITY 2	PRIORITY 3	PRIORITY 4	TOTAL	% OF TOTAL
APACHE	0	0	0	0	0	0.0%
COCHISE	25	41	85	33	184	3.1%
COCONINO	1	9	7	6	23	0.4%
GILA	17	27	43	22	109	1.8%
GRAHAM	2	4	7	4	17	0.3%
GREENLEE	0	0	0	0	0	0.0%
LA PAZ	0	0	0	0	0	0.0%
MARICOPA	494	772	1,832	911	4,009	67.4%
MOHAVE	6	17	27	8	58	1.0%
NAVAJO	1	2	2	0	5	0.1%
PIMA	83	144	366	143	736	12.4%
PINAL	60	103	278	136	577	9.7%
SANTA CRUZ	6	8	38	48	100	1.7%
YAVAPAI	12	17	42	21	92	1.6%
YUMA	2	7	13	7	29	0.5%
STATEWIDE	709	1,151	2,740	1,339	5,939	100.0%
% OF TOTAL	11.9%	19.4%	46.1%	22.6%	100.0%	

**CHART 9**  
**NUMBER OF REPORTS ASSIGNED FOR INVESTIGATION BY TYPE OF MALTREATMENT FOR REPORTS OPEN FOR INVESTIGATION**



The number of reports assigned for investigation for reports open for investigation will change each reporting period as investigations are completed and closed by next reporting period.

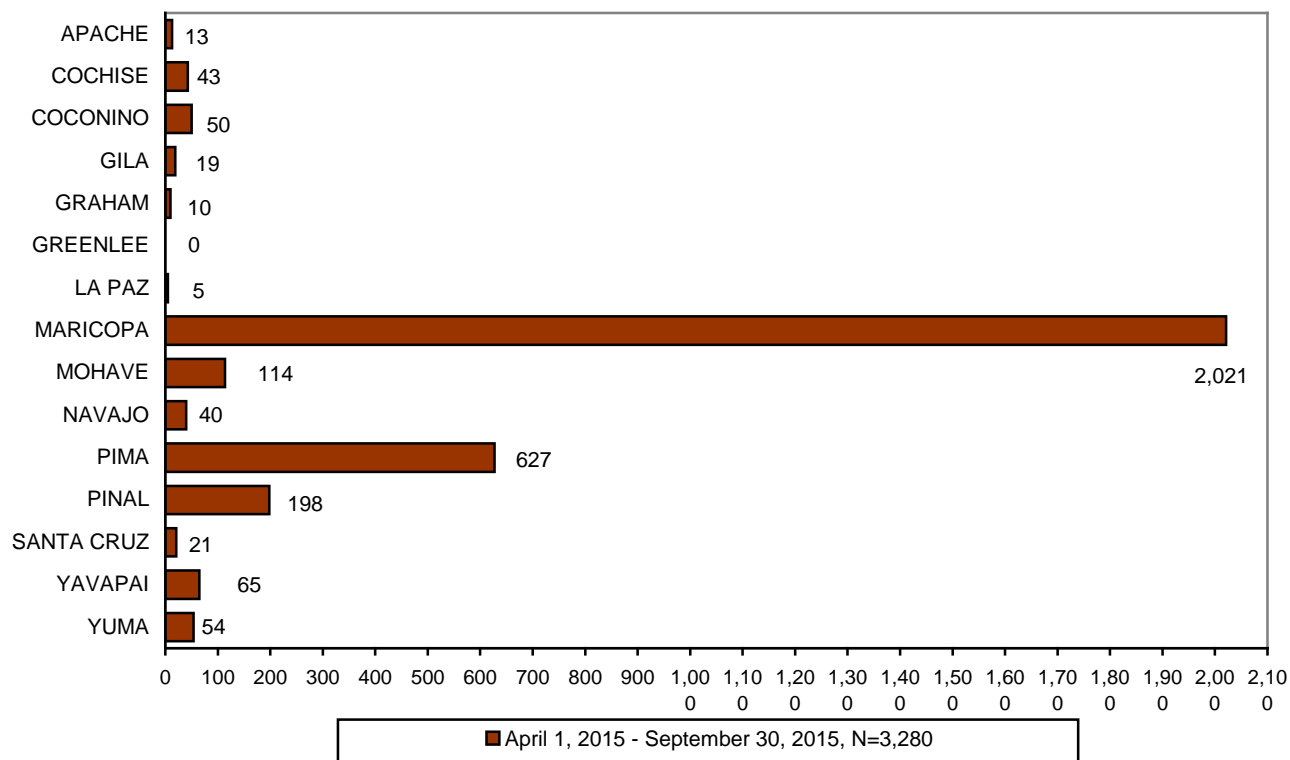
**TABLE 13**  
**NUMBER OF REPORTS BY TYPE OF MALTREATMENT AND COUNTY FOR REPORTS**  
**OPEN FOR INVESTIGATION FOR PERIOD OF**  
**APRIL 1, 2015 THROUGH SEPTEMBER 30, 2015**

COUNTY	EMOTIONAL ABUSE	NEGLECT	PHYSICAL ABUSE	SEXUAL ABUSE	TOTAL	% OF TOTAL
APACHE	0	7	2	0	9	0.1%
COCHISE	1	216	81	16	314	2.9%
COCONINO	0	62	30	3	95	0.9%
GILA	2	138	31	9	180	1.6%
GRAHAM	1	66	26	7	100	0.9%
GREENLEE	0	0	0	0	0	0.0%
LA PAZ	0	21	3	2	26	0.2%
MARICOPA	43	4,974	1,880	332	7,229	66.0%
MOHAVE	3	289	85	18	395	3.6%
NAVAJO	0	24	5	0	29	0.3%
PIMA	10	957	285	73	1,325	12. %
PINAL	3	511	174	25	713	6.5%
SANTA CRUZ	1	103	40	10	154	1.4%
YAVAPAI	2	182	47	17	248	2.3%
YUMA	1	87	36	5	129	1.2%
STATEWIDE	67	7,637	2,725	517	10,946	100.0%
% OF TOTAL	0.6%	69.8%	24.9%	4.7%	100.0%	

**TABLE 14**  
**NUMBER OF REPORTS BY TYPE OF MALTREATMENT AND COUNTY FOR REPORTS**  
**OPEN FOR INVESTIGATION FOR PERIOD OF**  
**OCTOBER 1, 2014 THROUGH MARCH 31, 2015**

COUNTY	EMOTIONAL ABUSE	NEGLECT	PHYSICAL ABUSE	SEXUAL ABUSE	TOTAL	% OF TOTAL
APACHE	0	0	0	0	0	0.0%
COCHISE	1	121	53	9	184	3.1%
COCONINO	0	15	6	2	23	0.4%
GILA	1	82	20	6	109	1.8%
GRAHAM	0	14	3	0	17	0.3%
GREENLEE	0	0	0	0	0	0.0%
LA PAZ	0	0	0	0	0	0.0%
MARICOPA	21	2,686	1,134	168	4,009	67.4%
MOHAVE	0	42	14	2	58	1.0%
NAVAJO	0	5	0	0	5	0.1%
PIMA	3	516	184	33	736	12.4%
PINAL	2	398	165	12	577	9.7%
SANTA CRUZ	0	62	33	5	100	1.7%
YAVAPAI	0	74	15	3	92	1.6%
YUMA	1	21	7	0	29	0.5%
STATEWIDE	29	4,036	1,634	240	5,939	100.0%
% OF TOTAL	0.5%	68.0%	27.5%	4.0%	100.0%	

**CHART 10  
NUMBER OF REPORTS ASSIGNED FOR INVESTIGATION WHERE A REMOVAL OCCURRED**



**TABLE 15  
NUMBER OF REPORTS ASSIGNED FOR INVESTIGATION BY COUNTY WHERE A REMOVAL OCCURRED FOR THE PERIOD APRIL 1, 2015 THROUGH SEPTEMBER 30, 2015**

COUNTY	NUMBER OF REPORTS ASSIGNED	NUMBER OF REPORTS ASSIGNED WITH A REMOVAL	% OF REPORTS WHERE A CHILD REMOVED
APACHE	87	13	14.9%
COCHISE	448	43	9.6%
COCONINO	344	50	14.5%
GILA	230	19	8.3%
GRAHAM	158	10	6.3%
GREENLEE	0	0	0.0%
LA PAZ	62	5	8.1%
MARICOPA	15,531	2,021	13.0%
MOHAVE	881	114	12.9%
NAVAJO	395	40	10.1%
PIMA	4,772	627	13.1%
PINAL	1,671	198	11.8%
SANTA CRUZ	194	21	10.8%
YAVAPAI	700	65	9.3%
YUMA	549	54	9.8%
STATEWIDE	26,022	3,280	12.6%

**TABLE 16**  
**NUMBER OF REPORTS ASSIGNED FOR INVESTIGATION BY COUNTY WHERE A**  
**REMOVAL OCCURRED FOR THE PERIOD OCTOBER 1, 2014 THROUGH MARCH 31, 2015**

COUNTY	NUMBER OF REPORTS ASSIGNED	NUMBER OF REPORTS ASSIGNED WITH A REMOVAL	% OF REPORTS WHERE A CHILD WAS REMOVED
APACHE	57	6	10.5%
COCHISE	399	20	5.0%
COCONINO	448	44	9.8%
GILA	168	14	8.3%
GRAHAM	174	16	9.2%
GREENLEE	10	0	0.0%
LA PAZ	56	6	10.7%
MARICOPA	15,144	1,746	11.5%
MOHAVE	755	81	10.7%
NAVAJO	326	23	7.1%
PIMA	4,661	589	12.6%
PINAL	1,627	218	13.4%
SANTA CRUZ	149	12	8.1%
YAVAPAI	715	82	11.5%
YUMA	493	48	9.7%
STATEWIDE	25,182	2,905	11.5%

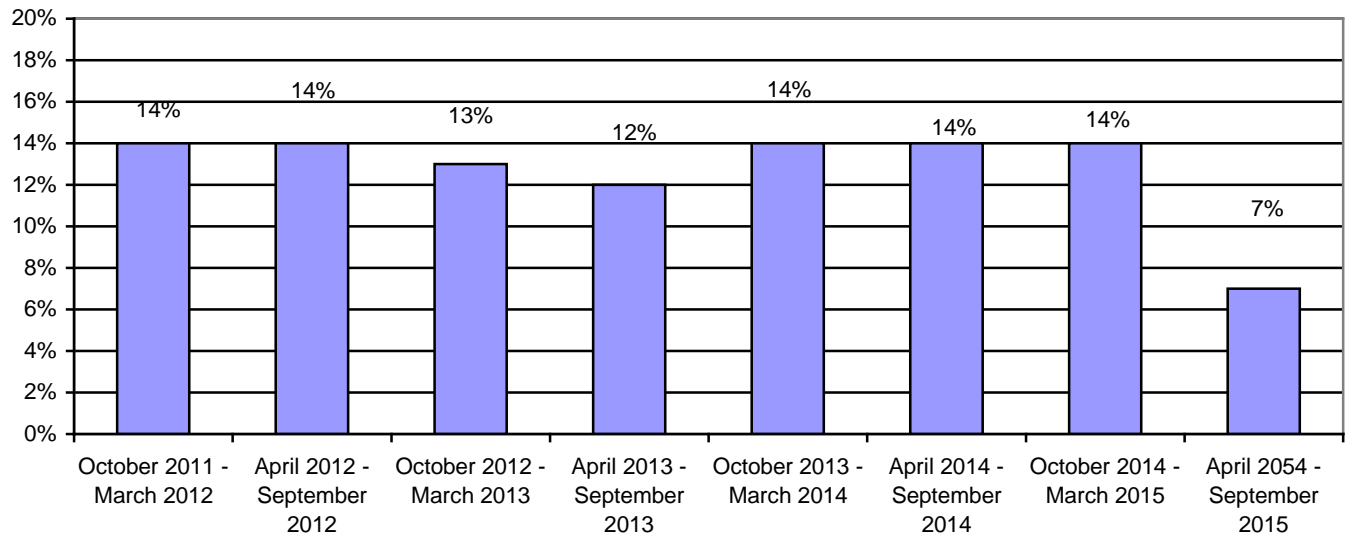
### **COMPLETED INVESTIGATIONS**

Substantiated reports are reports where the Department has determined that at least one of the allegations in the report of abuse and/or neglect is true. The number of reports that are considered substantiated are a subset of the total number of reports that were received, investigated, and closed during the reporting period.

The preliminary number of reports that are substantiated for the current reporting period is 1,926. For the prior reporting period, the number of reports that were assigned for investigation that resulted in substantiated findings was revised from 1,606 to 3,535. This number will change each reporting period as a result of subsequent decisions based on parents' rights to due process as well as the completion of investigations and findings.

- The preliminary substantiation rate for the current reporting period is 7%. However, the substantiation rate for the current period is anticipated to be revised upwards in the next semi-annual report.
- The substantiation rate for the prior reporting period is 14%. However, when initially reported, the September 2014 – March 2015 substantiation rate was 6%.

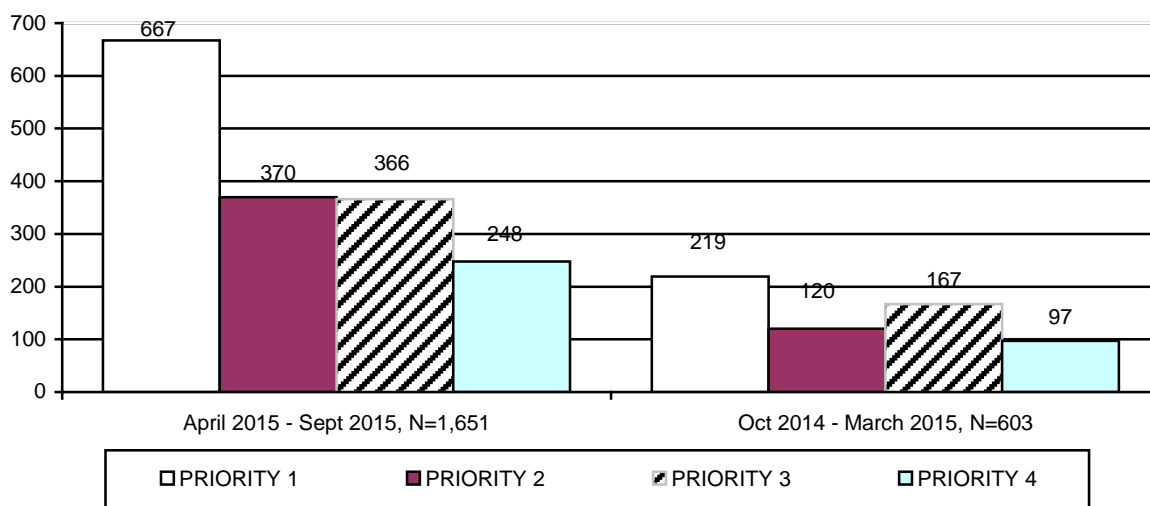
**CHART 11  
SUBSTANTIATION RATE BY REPORTING  
PERIOD**



Information on both proposed substantiations and finalized substantiations is provided in the charts and tables below:

- For information on the proposed substantiated investigation findings—classified by priority—for the current and prior reporting period, see Chart 12, Table 17, and Table 18.
- For information on the proposed substantiated investigation findings—classified by type of maltreatment—for the current and prior reporting period, see Chart 13, Table 19, and Table 20.
- For information on the substantiated investigation findings—classified by priority—for the current and prior reporting period, see Chart 14, Table 21, and Table 22.
- For information on the substantiated investigation findings—classified by type of maltreatment—for the current and prior reporting period, see Chart 15, Table 23, and Table 24.

**CHART 12**  
**NUMBER OF REPORTS ASSIGNED FOR INVESTIGATION BY PRIORITY AND REPORTING PERIOD THAT RESULTED IN PROPOSED SUBSTANTIATION**



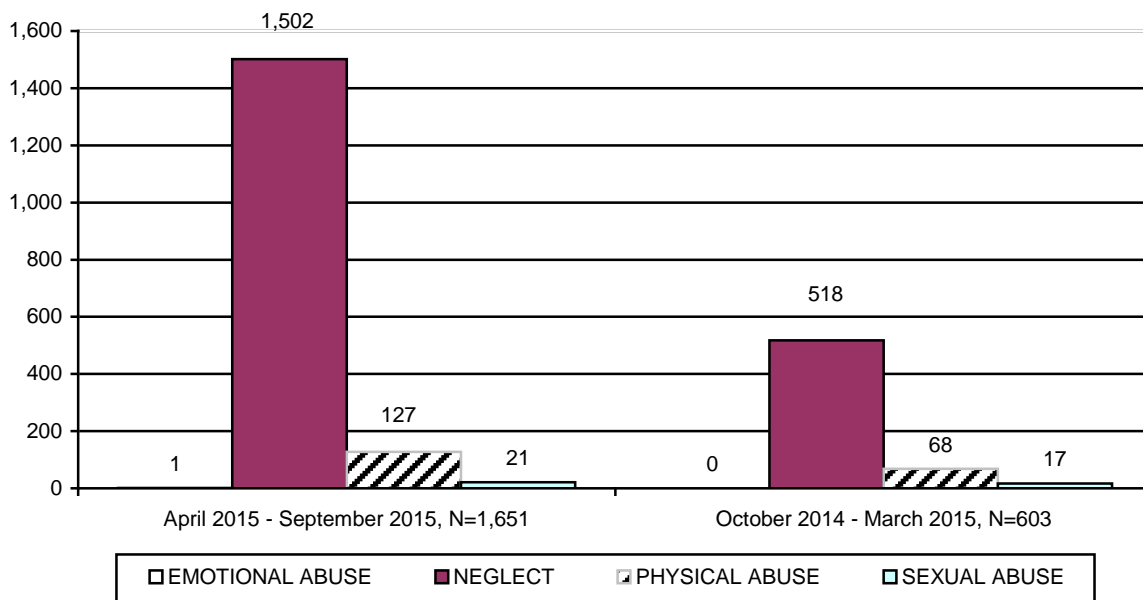
**TABLE 17**  
**NUMBER OF REPORTS ASSIGNED FOR INVESTIGATION BY PRIORITY AND COUNTY THAT RESULTED IN PROPOSED SUBSTANTIATION FOR PERIOD OF APRIL 1, 2015 THROUGH SEPTEMBER 30, 2015**

COUNTY	PRIORITY 1	PRIORITY 2	PRIORITY 3	PRIORITY 4	TOTAL	% OF TOTAL
APACHE	3	0	0	0	3	0.2%
COCHISE	8	11	8	2	29	1.8%
COCONINO	12	4	7	3	26	1.6%
GILA	4	3	0	0	7	0.4%
GRAHAM	3	0	1	0	4	0.2%
GREENLEE	0	0	0	0	0	0.0%
LA PAZ	0	0	2	0	2	0.1%
MARICOPA	424	218	224	198	1,064	64.4%
MOHAVE	32	23	22	3	80	4.9%
NAVAJO	15	3	6	1	25	1.5%
PIMA	98	79	59	18	254	15.3%
PINAL	39	18	15	20	92	5.6%
SANTA CRUZ	2	1	5	0	8	0.5%
YAVAPAI	20	8	14	2	44	2.7%
YUMA	7	2	3	1	13	0.8%
STATEWIDE	667	370	366	248	1,651	100.0%
% OF TOTAL	40.4%	22.4%	22.2%	15.0%	100.0%	

**TABLE 18**  
**NUMBER OF REPORTS ASSIGNED FOR INVESTIGATION BY PRIORITY AND COUNTY**  
**THAT RESULTED IN PROPOSED SUBSTANTIATION FOR PERIOD OF**  
**OCTOBER 1, 2014 THROUGH MARCH 31, 2015**

COUNTY	PRIORITY 1	PRIORITY 2	PRIORITY 3	PRIORITY 4	TOTAL	% OF TOTAL
APACHE	0	0	0	1	1	0.1%
COCHISE	5	2	1	0	8	1.3%
COCONINO	3	3	3	1	10	1.7%
GILA	1	1	0	0	2	0.3%
GRAHAM	0	0	0	0	0	0.0%
GREENLEE	0	0	0	0	0	0.0%
LA PAZ	0	0	0	0	0	0.0%
MARICOPA	123	67	114	77	381	63.3%
MOHAVE	15	11	8	1	35	5.8%
NAVAJO	0	0	2	1	3	0.5%
PIMA	49	29	17	7	102	16.9%
PINAL	11	2	8	6	27	4.5%
SANTA CRUZ	0	0	1	1	2	0.3%
YAVAPAI	12	5	13	2	32	5.3%
YUMA	0	0	0	0	0	0.0%
STATEWIDE	219	120	167	97	603	100.0%
% OF TOTAL	36.3%	19.9%	27.7%	16.1%	100.0%	

**CHART 13**  
**NUMBER OF REPORTS ASSIGNED FOR INVESTIGATION BY TYPE OF MALTREATMENT**  
**THAT RESULTED IN PROPOSED SUBSTANTIATION**



**TABLE 19**  
**NUMBER OF REPORTS ASSIGNED FOR INVESTIGATION BY TYPE OF MALTREATMENT**  
**BY COUNTY THAT RESULTED IN PROPOSED SUBSTANTIATION FOR PERIOD OF**  
**APRIL 1, 2015 THROUGH SEPTEMBER 30, 2015**

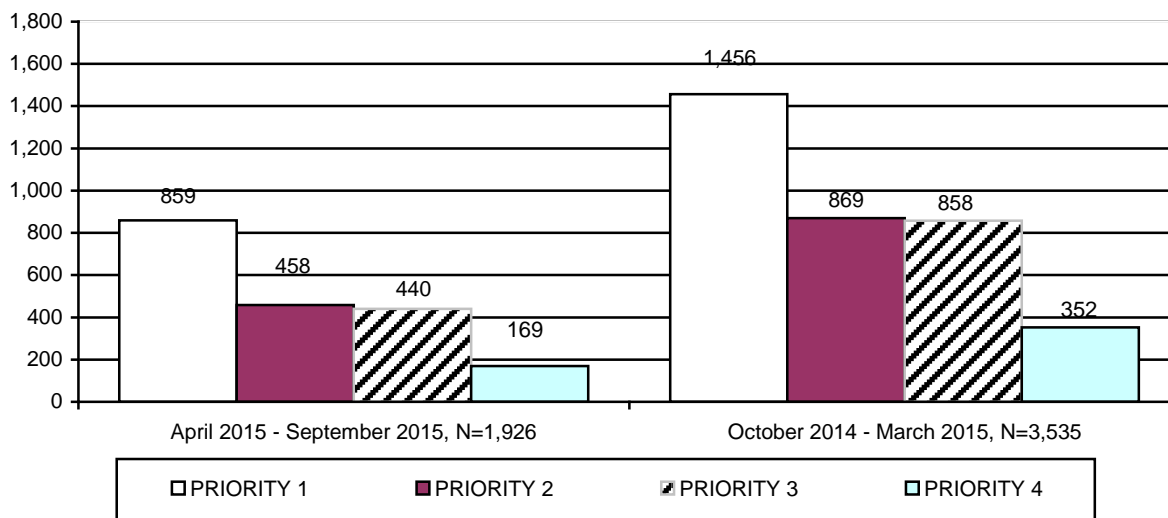
COUNTY	EMOTIONAL ABUSE	NEGLECT	PHYSICAL ABUSE	SEXUAL ABUSE	TOTAL	% OF TOTAL
APACHE	0	3	0	0	3	0.2%
COCHISE	0	24	5	0	29	1.8%
COCONINO	0	25	1	0	26	1.6%
GILA	0	7	0	0	7	0.4%
GRAHAM	0	3	1	0	4	0.2%
GREENLEE	0	0	0	0	0	0.0%
LA PAZ	0	1	1	0	2	0.1%
MARICOPA	1	967	78	18	1,064	64.4%
MOHAVE	0	76	4	0	80	4.9%
NAVAJO	0	25	0	0	25	1.5%
PIMA	0	231	22	1	254	15.3%
PINAL	0	83	9	0	92	5.6%
SANTA CRUZ	0	8	0	0	8	0.5%
YAVAPAI	0	38	5	1	44	2.7%
YUMA	0	11	1	1	13	0.8%
STATEWIDE	1	1,502	127	21	1,651	100.0%
% OF TOTAL	0.1%	90.9%	7.7%	1.3%	100.0%	

**TABLE 20**  
**NUMBER OF REPORTS ASSIGNED FOR INVESTIGATION BY TYPE OF MALTREATMENT**  
**BY COUNTY THAT RESULTED IN PROPOSED SUBSTANTIATION FOR PERIOD OF**  
**OCTOBER 1, 2014 THROUGH MARCH 31, 2015**

COUNTY	EMOTIONAL ABUSE	NEGLECT	PHYSICAL ABUSE	SEXUAL ABUSE	TOTAL	% OF TOTAL
APACHE	0	1	0	0	1	0.2%
COCHISE	0	8	0	0	8	1.3%
COCONINO	0	9	0	1	10	1.7%
GILA	0	2	0	0	2	0.3%
GRAHAM	0	0	0	0	0	0.0%
GREENLEE	0	0	0	0	0	0.0%
LA PAZ	0	0	0	0	0	0.0%
MARICOPA	0	314	53	14	381	63.2%
MOHAVE	0	30	5	0	35	5.8%
NAVAJO	0	2	1	0	3	0.5%
PIMA	0	98	4	0	102	16.9%
PINAL	0	25	1	1	27	4.5%
SANTA CRUZ	0	1	1	0	2	0.3%
YAVAPAI	0	28	3	1	32	5.3%
YUMA	0	0	0	0	0	0.0%
STATEWIDE	0	518	68	17	603	100.0%
% OF TOTAL	0.0%	85.9%	11.3%	2.8%	100.0%	



**CHART 14**  
**NUMBER OF REPORTS ASSIGNED FOR INVESTIGATION BY PRIORITY AND**  
**REPORTING PERIOD THAT RESULTED IN**  
**SUBSTANTIATION**



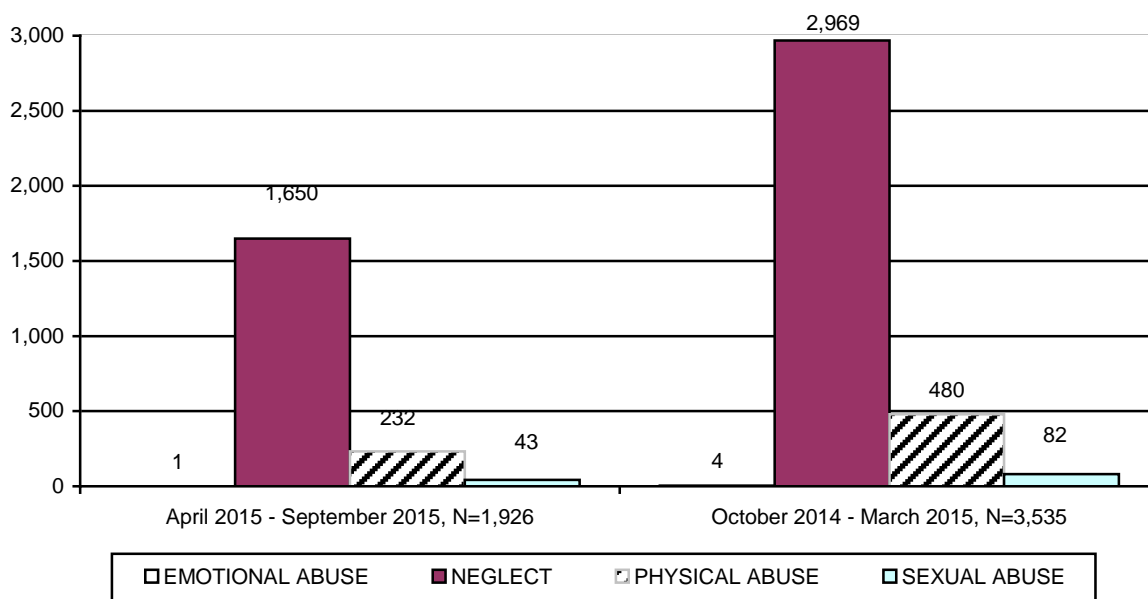
**TABLE 21**  
**NUMBER OF REPORTS ASSIGNED FOR INVESTIGATION BY PRIORITY AND COUNTY**  
**THAT RESULTED IN SUBSTANTIATION FOR PERIOD OF**  
**APRIL 1, 2015 THROUGH SEPTEMBER 30, 2015**

COUNTY	PRIORITY 1	PRIORITY 2	PRIORITY 3	PRIORITY 4	TOTAL	% OF TOTAL
APACHE	2	0	0	0	2	0.1%
COCHISE	5	1	1	0	7	0.3%
COCONINO	6	4	4	1	15	0.8%
GILA	7	0	0	0	7	0.3%
GRAHAM	2	0	0	0	2	0.1%
GREENLEE	0	0	0	0	0	0.0%
LA PAZ	2	2	1	1	6	0.3%
MARICOPA	573	270	255	135	1,233	64.0%
MOHAVE	18	10	7	1	36	1.9%
NAVAJO	22	5	14	3	44	2.3%
PIMA	136	104	99	11	350	18.2%
PINAL	41	42	34	11	128	6.7%
SANTA CRUZ	5	0	1	0	6	0.3%
YAVAPAI	8	5	15	2	30	1.6%
YUMA	32	15	9	4	60	3.1%
STATEWIDE	859	458	440	169	1,926	100%
% OF TOTAL	44.5%	23.8%	22.9%	8.8%	100.0%	

**TABLE 22**  
**NUMBER OF REPORTS ASSIGNED FOR INVESTIGATION BY PRIORITY AND COUNTY**  
**THAT RESULTED IN SUBSTANTIATION FOR PERIOD OF**  
**OCTOBER 1, 2014 THROUGH MARCH 31, 2015**

COUNTY	PRIORITY 1	PRIORITY 2	PRIORITY 3	PRIORITY 4	TOTAL	% OF TOTAL
APACHE	3	2	2	0	7	0.2%
COCHISE	14	7	6	1	28	0.8%
COCONINO	19	13	10	1	43	1.2%
GILA	6	6	0	0	12	0.3%
GRAHAM	15	7	5	2	29	0.8%
GREENLEE	0	0	0	0	0	0.0%
LA PAZ	9	1	2	1	13	0.4%
MARICOPA	941	511	537	262	2,251	63.6%
MOHAVE	47	23	18	3	91	2.6%
NAVAJO	19	13	14	3	49	1.4%
PIMA	240	178	163	40	621	17.6%
PINAL	75	68	54	29	226	6.4%
SANTA CRUZ	5	3	3	1	12	0.3%
YAVAPAI	24	15	19	4	62	1.8%
YUMA	39	22	25	5	91	2.6%
STATEWIDE	1,456	869	858	352	3,535	100.0%
% OF TOTAL	41.1%	24.6%	24.3%	10.0%	100.0%	

**CHART 15**  
**NUMBER OF REPORTS ASSIGNED FOR INVESTIGATION BY TYPE OF MALTREATMENT**  
**THAT RESULTED IN SUBSTANTIATION**



**TABLE 23**  
**NUMBER OF REPORTS ASSIGNED FOR INVESTIGATION BY TYPE OF MALTREATMENT**  
**BY COUNTY THAT RESULTED IN SUBSTANTIATION FOR PERIOD OF**  
**APRIL 1, 2015 THROUGH SEPTEMBER 30, 2015**

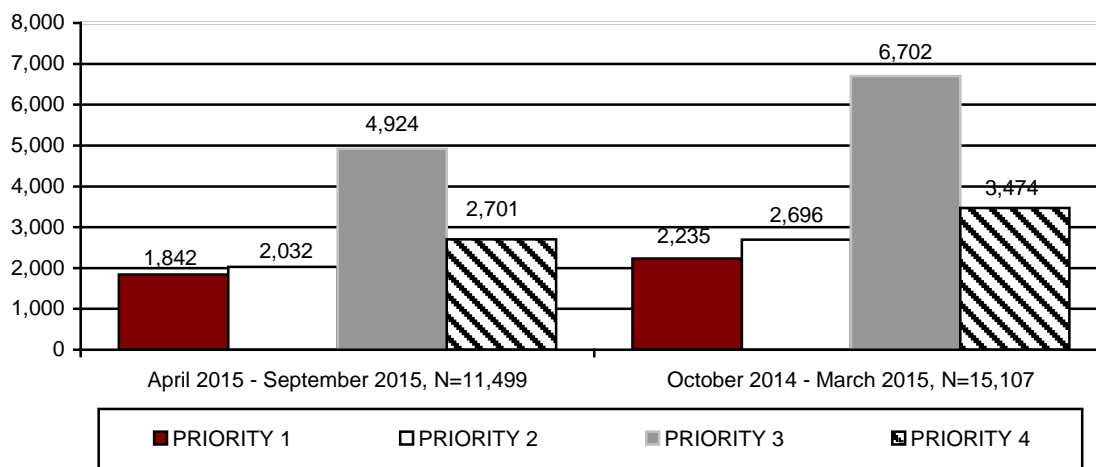
COUNTY	EMOTIONAL ABUSE	NEGLECT	PHYSICAL ABUSE	SEXUAL ABUSE	TOTAL	% OF TOTAL
APACHE	0	2	0	0	2	0.1%
COCHISE	0	6	1	0	7	0.4%
COCONINO	0	13	0	2	15	0.8%
GILA	0	5	2	0	7	0.4%
GRAHAM	0	2	0	0	2	0.1%
GREENLEE	0	0	0	0	0	0.0%
LA PAZ	0	6	0	0	6	0.3%
MARICOPA	0	1,061	145	27	1,233	63.9%
MOHAVE	0	32	4	0	36	1.9%
NAVAJO	1	36	6	1	44	2.3%
PIMA	0	297	48	5	350	18.1%
PINAL	0	109	15	4	128	6.7%
SANTA CRUZ	0	5	1	0	6	0.3%
YAVAPAI	0	24	3	3	30	1.6%
YUMA	0	52	7	1	60	3.1%
STATEWIDE	1	1,650	232	43	1,926	100.0%
% OF TOTAL	0.1%	85.6%	12.1%	2.2%	100.0%	

**TABLE 24**  
**NUMBER OF REPORTS ASSIGNED FOR INVESTIGATION BY TYPE OF MALTREATMENT**  
**BY COUNTY THAT RESULTED IN SUBSTANTIATION FOR PERIOD OF**  
**OCTOBER 1, 2014 THROUGH MARCH 31, 2015**

COUNTY	EMOTIONAL ABUSE	NEGLECT	PHYSICAL ABUSE	SEXUAL ABUSE	TOTAL	% OF TOTAL
APACHE	0	5	2	0	7	0.2%
COCHISE	0	25	2	1	28	0.8%
COCONINO	0	35	7	1	43	1.2%
GILA	0	11	1	0	12	0.3%
GRAHAM	0	20	7	2	29	0.8%
GREENLEE	0	0	0	0	0	0.0%
LA PAZ	0	11	1	1	13	0.4%
MARICOPA	3	1,891	303	54	2,251	63.6%
MOHAVE	0	79	11	1	91	2.6%
NAVAJO	0	41	8	0	49	1.4%
PIMA	1	539	70	11	621	17.6%
PINAL	0	176	43	7	226	6.4%
SANTA CRUZ	0	12	0	0	12	0.3%
YAVAPAI	0	49	12	1	62	1.8%
YUMA	0	75	13	3	91	2.6%
STATEWIDE	4	2,969	480	82	3,535	100.0%
% OF TOTAL	0.1%	84.0%	13.6%	2.3%	100.0%	

The preliminary number of investigations that resulted in an unsubstantiated finding for this reporting period was 10,017. Charts 16 and 17 display information on unsubstantiated reports classified by priority and type of maltreatment for the current and prior reporting periods. Tables 25 and 26 provide information on the unsubstantiated investigation findings classified by priority for each county in the current and prior reporting periods. Tables 27 and 28 provide information on the unsubstantiated investigation findings classified by type of maltreatment for each county in the current and prior reporting periods. These figures will change over time as investigations are completed and findings are entered.

**CHART 16  
NUMBER OF REPORTS ASSIGNED FOR INVESTIGATION BY PRIORITY AND REPORTING PERIOD THAT RESULTED IN UNSUBSTANTIATION**



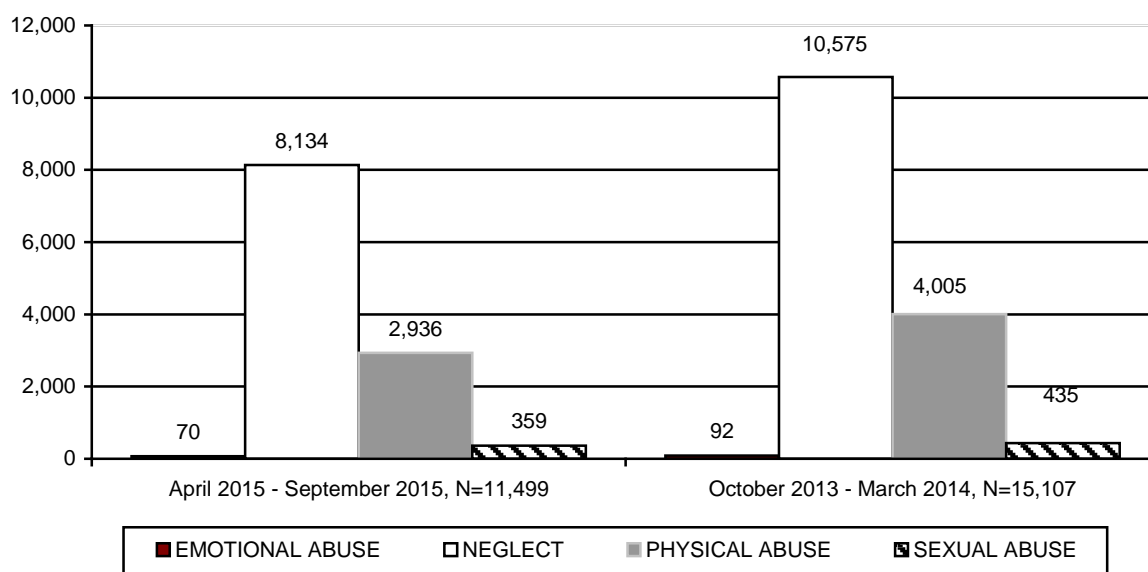
**TABLE 25  
NUMBER OF REPORTS ASSIGNED FOR INVESTIGATION BY PRIORITY AND COUNTY THAT RESULTED IN UNSUBSTANTIATION FOR PERIOD OF APRIL 1, 2015 THROUGH SEPTEMBER 30, 2015**

COUNTY	PRIORITY 1	PRIORITY 2	PRIORITY 3	PRIORITY 4	TOTAL	% OF TOTAL
APACHE	19	15	24	15	73	0.6%
COCHISE	17	22	47	12	98	0.9%
COCONINO	34	38	90	46	208	1.8%
GILA	9	7	15	5	36	0.3%
GRAHAM	8	13	18	13	52	0.5%
GREENLEE	0	0	0	0	0	0.0%
LA PAZ	4	8	10	6	28	0.2%
MARICOPA	1,047	1,007	2,475	1,476	6,005	52.3%
MOHAVE	62	81	151	76	370	3.2%
NAVAJO	40	57	115	85	297	2.6%
PIMA	371	503	1,354	615	2,843	24.7%
PINAL	134	139	281	184	738	6.4%
SANTA CRUZ	3	7	7	9	26	0.2%
YAVAPAI	43	76	174	85	378	3.3%
YUMA	51	59	163	74	347	3.0%
STATEWIDE	1,842	2,032	4,924	2,701	11,499	100.0%
% OF TOTAL	16.0%	17.7%	42.8%	23.5%	100.0%	

**TABLE 26**  
**NUMBER OF REPORTS ASSIGNED FOR INVESTIGATION BY PRIORITY AND COUNTY**  
**THAT RESULTED IN UNSUBSTANTIATION FOR PERIOD OF**  
**OCTOBER 1, 2014 THROUGH MARCH 31, 2015**

COUNTY	PRIORITY 1	PRIORITY 2	PRIORITY 3	PRIORITY 4	TOTAL	% OF TOTAL
APACHE	8	8	22	13	51	0.3%
COCHISE	30	53	72	24	179	1.2%
COCONINO	52	49	175	62	338	2.2%
GILA	2	16	19	9	46	0.3%
GRAHAM	11	20	40	27	98	0.7%
GREENLEE	2	0	4	3	9	0.1%
LA PAZ	8	6	16	13	43	0.3%
MARICOPA	1,323	1,516	3,634	1,950	8,423	55.8%
MOHAVE	75	118	248	121	562	3.7%
NAVAJO	40	74	129	80	323	2.1%
PIMA	411	529	1,544	753	3,237	21.4%
PINAL	159	144	370	193	866	5.7%
SANTA CRUZ	6	5	9	13	33	0.2%
YAVAPAI	64	82	234	132	512	3.4%
YUMA	44	76	186	81	387	2.6%
STATEWIDE	2,235	2,696	6,702	3,474	15,107	100.0%
% OF TOTAL	14.8%	17.9%	44.3%	23.0%	100.0%	

**CHART 17**  
**NUMBER OF REPORTS ASSIGNED FOR INVESTIGATION BY TYPE OF MALTREATMENT**  
**THAT RESULTED IN UNSUBSTANTIATION BY REPORTING PERIOD**



**TABLE 27**  
**NUMBER OF REPORTS ASSIGNED FOR INVESTIGATION BY TYPE OF MALTREATMENT**  
**BY COUNTY THAT RESULTED IN UNSUBSTANTIATION FOR PERIOD OF**  
**APRIL 1, 2015 THROUGH SEPTEMBER 30, 2015**

COUNTY	EMOTIONAL ABUSE	NEGLECT	PHYSICAL ABUSE	SEXUAL ABUSE	TOTAL	% OF TOTAL
APACHE	0	57	13	3	73	0.6%
COCHISE	0	74	20	4	98	0.9%
COCONINO	2	15331	42	11	208	1.8%
GILA	0	42	4	1	36	0.3%
GRAHAM	1	0	9	0	52	0.5%
GREENLEE	0	20	0	0	0	0.0%
LA PAZ	0	4,145	8	0	28	0.2%
MARICOPA	35	262	1,633	192	6,005	52.3%
MOHAVE	0	224	94	14	370	3.2%
NAVAJO	2	2,082	55	16	297	2.6%
PIMA	23	498	684	54	2,843	24.7%
PINAL	5	498	200	35	738	6.4%
SANTA CRUZ	0	18	5	3	26	0.2%
YAVAPAI	0	278	81	19	378	3.3%
YUMA	2	250	88	7	347	3.0%
STATEWIDE	70	8,134	2,936	359	11,499	100.0%
% OF TOTAL	0.6%	70.8%	25.5%	3.1%	100.0%	

**TABLE 28**  
**NUMBER OF REPORTS ASSIGNED FOR INVESTIGATION BY TYPE OF MALTREATMENT**  
**BY COUNTY THAT RESULTED IN UNSUBSTANTIATION FOR PERIOD OF**  
**OCTOBER 1, 2014 THROUGH MARCH 31, 2015**

COUNTY	EMOTIONAL ABUSE	NEGLECT	PHYSICAL ABUSE	SEXUAL ABUSE	TOTAL	% OF TOTAL
APACHE	1	32	17	1	51	0.3%
COCHISE	0	131	40	8	179	1.2%
COCONINO	2	210	106	20	338	2.2%
GILA	0	34	12	0	46	0.3%
GRAHAM	1	72	23	2	98	0.7%
GREENLEE	0	6	3	0	9	0.1%
LA PAZ	0	39	3	1	43	0.3%
MARICOPA	51	5,813	2,315	244	8,423	55.8%
MOHAVE	4	402	141	15	562	3.7%
NAVAJO	2	236	78	7	323	2.1%
PIMA	22	2,316	823	76	3,237	21.4%
PINAL	6	624	206	30	866	5.7%
SANTA CRUZ	0	21	9	3	33	0.2%
YAVAPAI	0	361	136	15	512	3.4%
YUMA	3	278	93	13	387	2.6%
STATEWIDE	92	10,575	4,005	435	15,107	100.0%
% OF TOTAL	0.6%	70.0%	26.5%	2.9%	100.0%	

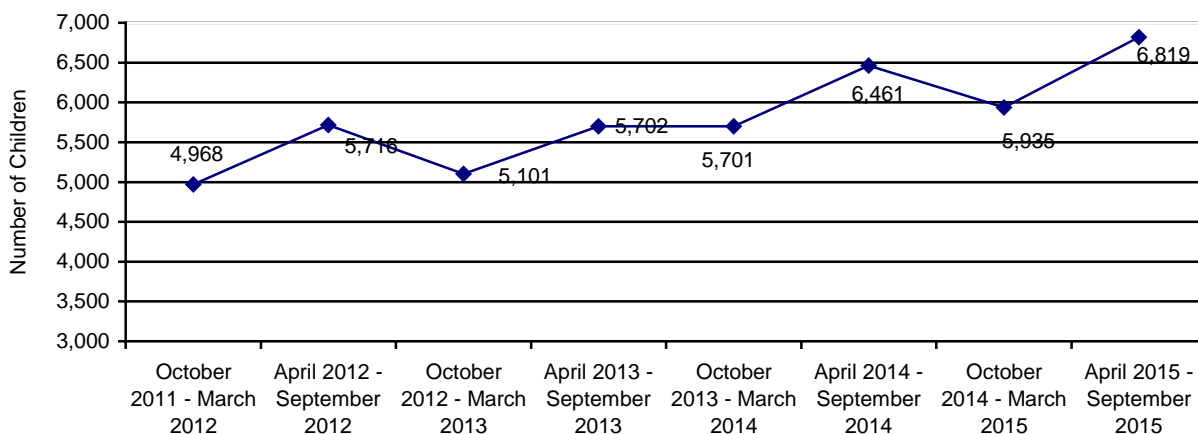
**SAFE HAVEN INFANTS**

Communications from providers indicate that there were no newborn infants delivered to Safe Haven providers during the April 2015 – September 2015 reporting period. This compares to two infants being delivered to Safe Haven providers during the prior reporting period.

**CHILDREN ENTERING OUT-OF-HOME CARE**

During the current reporting period, 6,819 children entered care, which represents a 14.9% increase in children entering care over the prior reporting period and a 5.5% increase over the same reporting period last year. As can be seen from Chart 18 below, the increasing trend of children entering out-of-home care continues. This increase in the number of children entering care is not unexpected as the number of reports of abuse and neglect has continued to increase (see Chart 1 for number of reports detail). It is important to note, however, that child welfare data is seasonal. The trend in the data shows a higher number of reports and therefore a higher number children entering out-of-home care in reporting periods that cover April through September. This seasonality can be attributed to higher call volume to the Hotline in April, Child Abuse Awareness month, and the close and start of the school year in May and August, respectively.

**CHART 18  
TOTAL CHILDREN ENTERING OUT-OF-HOME CARE BY REPORTING PERIOD**



**CHILDREN ENTERING OUT-OF-HOME CARE – VOLUNTARY SERVICES**

The number of children entering out-of-home placement through voluntary foster care agreements for the current reporting period was 154, which represents 2.3 percent of the children entering care this reporting period. Information on the county level distribution of voluntary placements into out-of-home care can be found in Table 29 for the current reporting period and in Table 30 for the prior reporting period.

Voluntary foster care may be provided when the parents or legal guardians of a child have requested such assistance and have signed a legally binding written agreement for the temporary placement of the child in foster care while risk factors are addressed to enable the child to live safely at home. A.R.S. § 8-806 authorizes the Department to provide voluntary foster care placement for children for a period not to exceed 90 days and no more than twice within 24 consecutive months.

**TABLE 29**  
**NUMBER OF CHILDREN ENTERING OUT-OF-HOME CARE BY COUNTY WHO ARE**  
**VOLUNTARY PLACEMENTS FOR CHILDREN UNDER THE AGE OF EIGHTEEN FOR THE**  
**PERIOD OF APRIL 1, 2015 THROUGH SEPTEMBER 30, 2015**

COUNTY	NUMBER OF CHILDREN REMOVED	% OF TOTAL REMOVALS	NUMBER OF CHILDREN ENTERING OUT-OF-HOME CARE UNDER THE AGE OF EIGHTEEN WHO ARE VOLUNTARY PLACEMENTS	% OF CHILDREN ENTERING OUT-OF-HOME CARE WHO ARE VOLUNTARY PLACEMENTS
APACHE	21	0.3%	0	0.0%
COCHISE	85	1.3%	0	0.0%
COCONINO	86	1.3%	1	0.7%
GILA	42	0.6%	2	1.3%
GRAHAM	21	0.3%	0	0.0%
GREENLEE	0	0.0%	0	0.0%
LA PAZ	7	0.1%	0	0.0%
MARICOPA	4,271	62.6%	51	33.1%
MOHAVE	234	3.4%	13	8.4%
NAVAJO	64	0.9%	2	1.3%
PIMA	1,218	17.9%	67	43.4%
PINAL	468	6.9%	1	0.7%
SANTA CRUZ	43	0.6%	0	0.0%
YAVAPAI	147	2.2%	12	7.8%
YUMA	112	1.6%	5	3.3%
STATEWIDE	6,819	100.0%	154	2.3%

**TABLE 30**  
**NUMBER OF CHILDREN ENTERING OUT-OF-HOME CARE BY COUNTY WHO ARE**  
**VOLUNTARY PLACEMENTS FOR CHILDREN UNDER THE AGE OF EIGHTEEN FOR THE**  
**PERIOD OF OCTOBER 1, 2014 THROUGH MARCH 31, 2015**

COUNTY	NUMBER OF CHILDREN REMOVED	% OF TOTAL REMOVALS	NUMBER OF CHILDREN ENTERING OUT-OF-HOME CARE UNDER THE AGE OF EIGHTEEN WHO ARE VOLUNTARY PLACEMENTS	% OF CHILDREN ENTERING OUT-OF-HOME CARE WHO ARE VOLUNTARY PLACEMENTS
APACHE	12	0.2%	0	0.0%
COCHISE	50	0.8%	0	0.0%
COCONINO	66	1.1%	7	5.3%
GILA	38	0.6%	2	1.5%
GRAHAM	29	0.5%	0	0.0%
GREENLEE	0	0.0%	0	0.0%
LA PAZ	20	0.3%	0	0.0%
MARICOPA	3,682	62.1%	50	38.2%
MOHAVE	166	2.8%	0	0.0%
NAVAJO	52	0.9%	1	0.8%
PIMA	1,105	18.7%	51	38.9%
PINAL	441	7.4%	3	2.3%
SANTA CRUZ	14	0.2%	0	0.0%
YAVAPAI	152	2.6%	11	8.4%
YUMA	108	1.8%	6	4.6%
STATEWIDE	5,935	100.0%	131	100.0%



**NUMBER OF CHILDREN ENTERING OUT-OF-HOME CARE**

The total number of children entering out-of-home care (of which voluntary placements are a subset) in the current reporting period was 6,819, which represents an increase of 14.9 percent and a 5.5 percent increase over the same reporting period last year. Chart 19 displays the number of removed children, and then further differentiates new removals by providing the number with a prior removal in the past 12 months and the past 12 to 24 months. Information on the county level distribution of children entering out-of-home care can be found in Table 31 for the current period and Table 32 for the prior period.

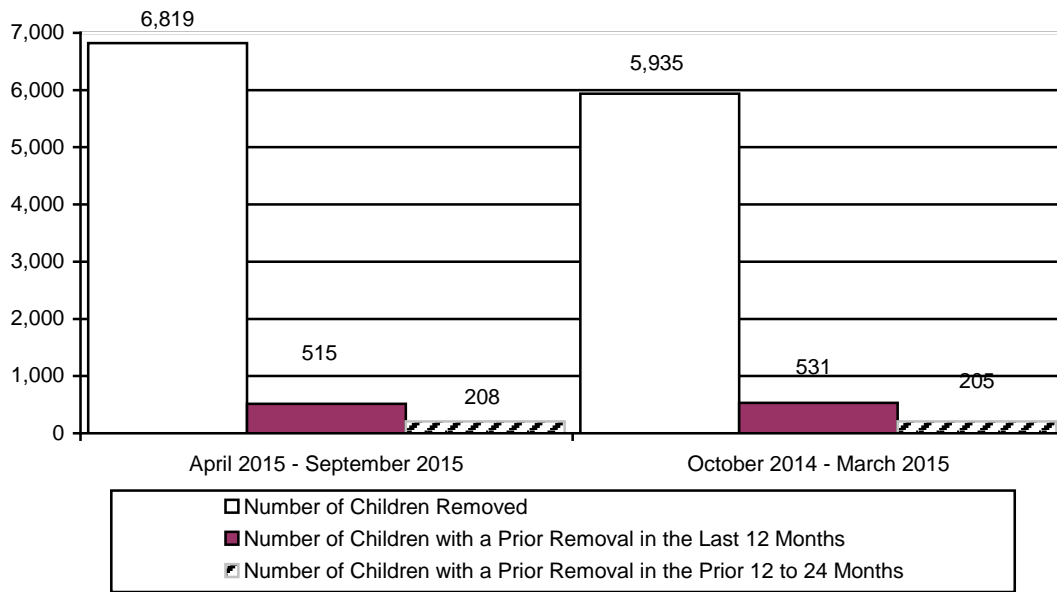
**TABLE 31  
NUMBER OF CHILDREN ENTERING OUT-OF-HOME CARE BY COUNTY FOR THE  
PERIOD OF APRIL 1, 2015 THROUGH SEPTEMBER 30, 2015**

COUNTY	NUMBER OF CHILDREN REMOVED	% OF TOTAL REMOVALS	NUMBER OF CHILDREN WITH A PRIOR REMOVAL IN THE LAST 12 MONTHS	% OF CHILDREN WITH A PRIOR REMOVAL IN THE LAST 12 MONTHS	NUMBER OF CHILDREN WITH A REMOVAL IN THE PRIOR 12 TO 24 MONTHS	% OF CHILDREN WITH A PRIOR REMOVAL IN THE PRIOR 12 TO 24 MONTHS
APACHE	21	0.3%	2	9.5%	1	4.8%
COCHISE	85	1.3%	9	10.6%	1	1.2%
COCONINO	86	1.3%	0	0.0%	0	0.0%
GILA	42	0.6%	5	11.9%	2	4.8%
GRAHAM	21	0.3%	0	0.0%	0	0.0%
GREENLEE	0	0.0%	0	0.0%	0	0.0%
LA PAZ	7	0.1%	0	0.0%	0	0.0%
MARICOPA	4,271	62.6%	305	7.1%	139	3.3%
MOHAVE	234	3.4%	17	7.3%	3	1.3%
NAVAJO	64	0.9%	2	3.1%	4	6.3%
PIMA	1,218	17.9%	125	10.3%	51	4.2%
PINAL	468	6.9%	33	7.1%	2	0.4%
SANTA CRUZ	43	0.6%	0	0.0%	0	0.0%
YAVAPAI	147	2.2%	6	4.1%	2	1.4%
YUMA	112	1.6%	11	9.8%	3	2.7%
STATEWIDE	6,819	100.0%	515	7.6%	208	3.1%

**TABLE 32**  
**NUMBER OF CHILDREN ENTERING OUT-OF-HOME CARE BY COUNTY FOR THE**  
**PERIOD OF OCTOBER 1, 2014 THROUGH MARCH 31, 2015**

COUNTY	NUMBER OF CHILDREN REMOVED	% OF TOTAL REMOVALS	NUMBER OF CHILDREN WITH A PRIOR REMOVAL IN THE LAST 12 MONTHS	% OF CHILDREN WITH A PRIOR REMOVAL IN THE LAST 12 MONTHS	NUMBER OF CHILDREN WITH A REMOVAL IN THE PRIOR 12 TO 24 MONTHS	% OF CHILDREN WITH A PRIOR REMOVAL IN THE PRIOR 12 TO 24 MONTHS
APACHE	12	0.2%	0	0.0%	0	0.0%
COCHISE	50	0.8%	6	12.0%	1	2.0%
COCONINO	66	1.1%	7	10.6%	0	0.0%
GILA	38	0.6%	2	5.3%	10	26.3%
GRAHAM	29	0.5%	4	13.8%	3	10.3%
GREENLEE	0	0.0%	0	0.0%	0	0.0%
LA PAZ	20	0.3%	1	5.0%	0	0.0%
MARICOPA	3,682	62.1%	303	8.2%	133	3.6%
MOHAVE	166	2.8%	25	15.1%	6	3.6%
NAVAJO	52	0.9%	2	3.8%	3	5.8%
PIMA	1,105	18.7%	120	10.9%	28	2.5%
PINAL	441	7.4%	32	7.3%	9	2.0%
SANTA CRUZ	14	0.2%	0	0.0%	0	0.0%
YAVAPAI	152	2.6%	17	11.2%	6	3.9%
YUMA	108	1.8%	12	11.1%	6	5.6%
STATEWIDE	5,935	100.0%	531	8.9%	205	3.5%

**CHART 19**  
**NUMBER OF CHILDREN ENTERING OUT-OF-HOME CARE BY REPORTING PERIOD**



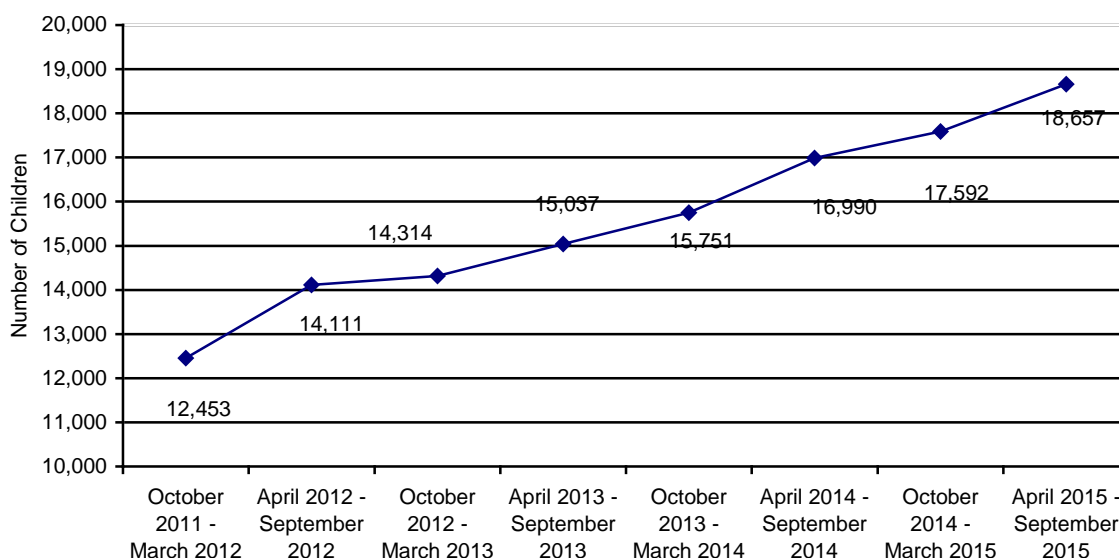
**CHILDREN IN OUT-OF-HOME CARE**

Chart 20 below shows the number of children in out-of-home care on the last day of the current and past reporting periods.

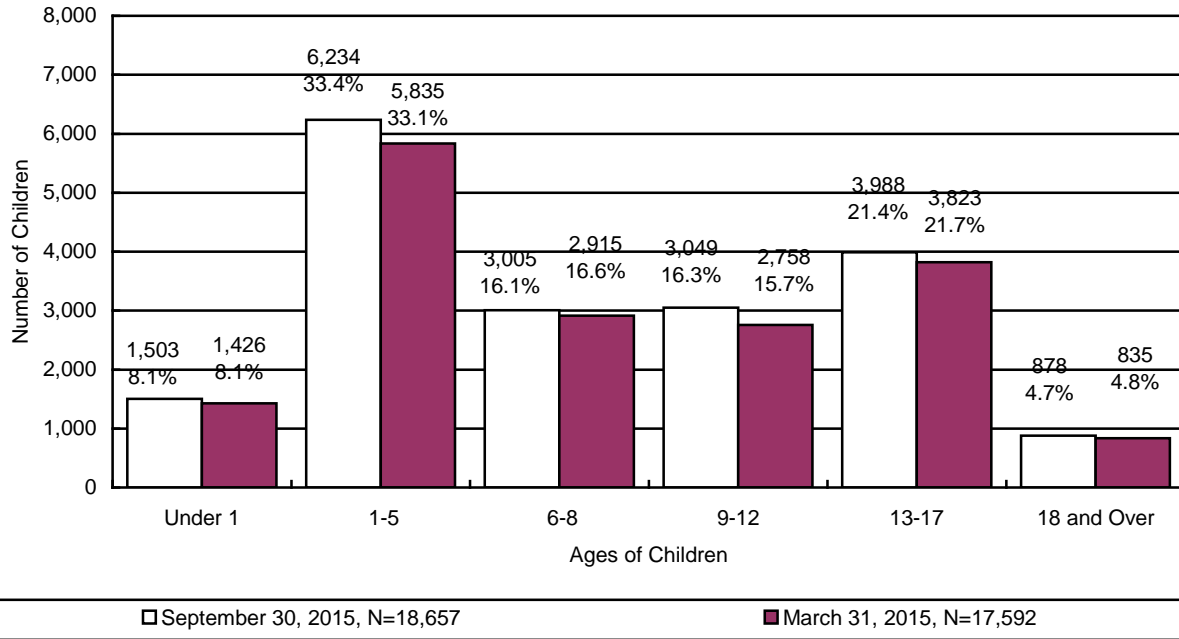
On the last day of the current reporting period, 14,863 children, approximately 80 percent, of all children in out-of-home care were placed in family settings either with relatives, in foster homes or trial home visit with a parent. Placement information for children in out-of-home care for the current and prior reporting periods can be found in Chart 27. See Table 33 for the out-of-home population organized to show the number of children, grouped by age, in each placement type for the current reporting period.

For information on the age distribution of children in out-of-home care, see Chart 24, which displays this information for the current and prior reporting periods. The ethnicity of children in out-of-home care for the current and prior reporting periods is displayed in Chart 25.

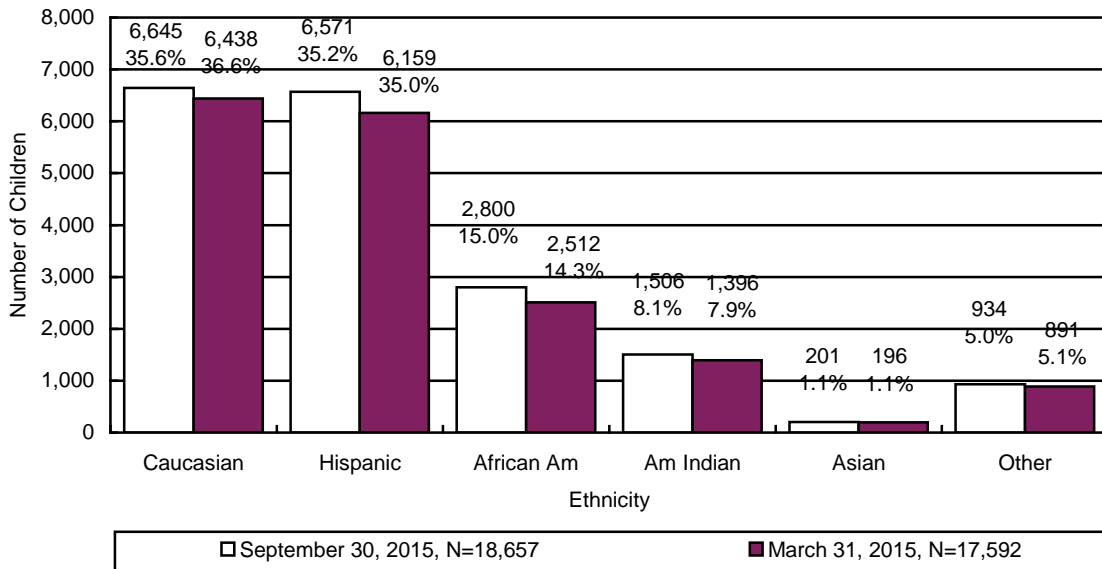
**CHART 20  
NUMBER OF CHILDREN IN OUT-OF-HOME CARE ON THE LAST DAY OF THE  
REPORTING PERIOD BY REPORTING PERIOD**



**CHART 21**  
**THE NUMBER OF CHILDREN IN OUT-OF-HOME CARE BY AGE**

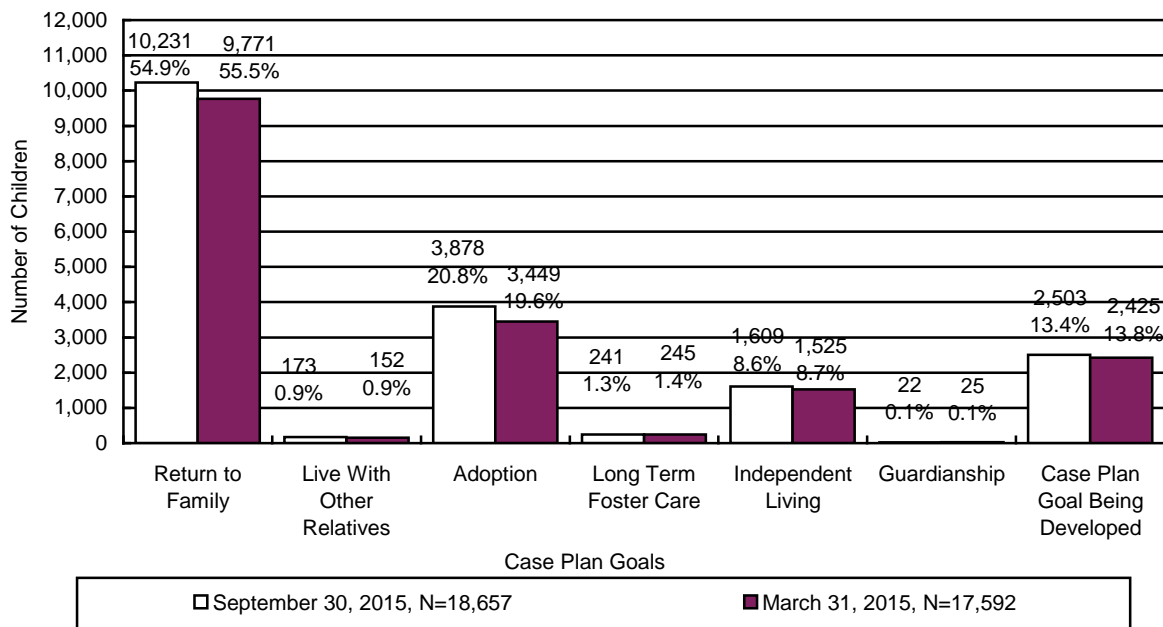


**CHART 22**  
**THE NUMBER OF CHILDREN IN OUT-OF-HOME CARE BY ETHNICITY**

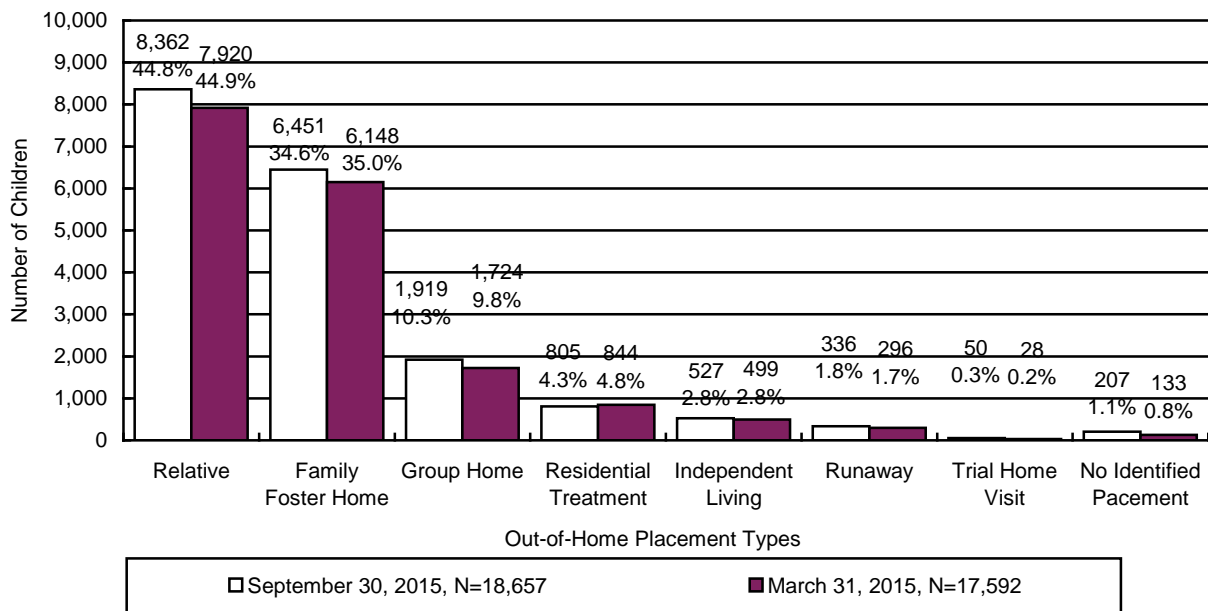


For 54.9 percent of the children in out-of-home care, family reunification remains the primary case plan goal. See Chart 23 for additional detail on the case plan goals of children in out-of-home care.

**CHART 23**  
**THE NUMBER OF CHILDREN IN OUT-OF-HOME CARE BY CASE PLAN GOAL**



**CHART 24**  
**THE NUMBER OF CHILDREN IN OUT-OF-HOME CARE BY PLACEMENT TYPE<sup>4</sup>**



<sup>4</sup> In every reporting cycle DCS has children who, in the CHILDS database, do not have a placement identified when the data extract has run due to delays in CHILDS entry. It has been the historical practice of the Department to proportionally allocate the unidentified children across the placement types, but they are now reflected in a standalone category. The timeliness of CHILDS data entry is expected to increase as processes are standardized and workloads become more manageable.

**TABLE 33  
THE NUMBER OF CHILDREN IN OUT-OF-HOME CARE BY PLACEMENT TYPE AND AGE**

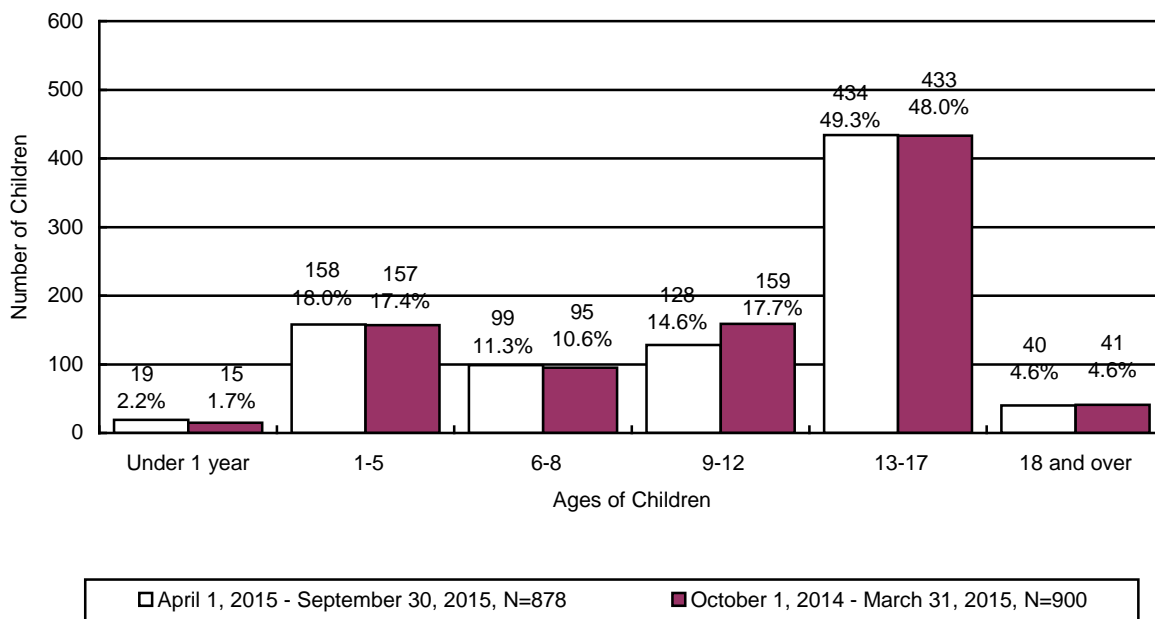
	RELATIVE	FAMILY FOSTER	GROUP HOME	RESIDENTIAL TREATMENT <sup>5</sup>	INDEPENDENT LIVING	RUNAWAY / ABSCONDED <sup>6</sup>	TRIAL HOME VISIT	NO IDENTIFIED PLACEMENT	TOTAL	% OF TOTAL
UNDER 1	681	796	1	9	0	5	2	9	1,503	8.1%
1	828	777	11	16	0	2	4	8	1,646	8.8%
2	725	599	7	23	0	1	0	11	1,366	7.3%
3	614	507	12	17	0	1	3	11	1,165	6.2%
4	545	434	21	31	0	1	1	11	1,044	5.6%
5	544	411	25	25	0	1	2	5	1,013	5.4%
6	566	388	39	23	0	3	4	7	1,030	5.5%
7	550	377	69	21	0	1	1	5	1,024	5.5%
8	525	327	74	18	0	0	0	7	951	5.1%
9	457	308	90	22	0	3	1	6	887	4.8%
10	424	256	110	23	0	1	3	9	826	4.4%
11	358	199	96	20	0	2	1	8	684	3.7%
12	300	179	131	27	0	2	4	9	652	3.5%
13	277	155	152	42	0	4	2	12	644	3.5%
14	275	166	176	66	0	20	6	11	720	3.9%
15	241	158	237	87	0	51	3	14	791	4.2%
16	221	174	269	109	0	91	3	18	885	4.7%
17	193	171	303	118	7	123	7	26	948	5.1%
18 & OLDER	38	69	96	108	520	24	3	20	878	4.7%
TOTAL	8,362	6,451	1,919	805	527	336	50	207	18,657	100.0%
% OF TOTAL	44.8%	34.6%	10.3%	4.3%	2.8%	1.8%	0.3%	1.1%	100.0%	

<sup>5</sup> This category includes shelter, detention, and hospital placement types.

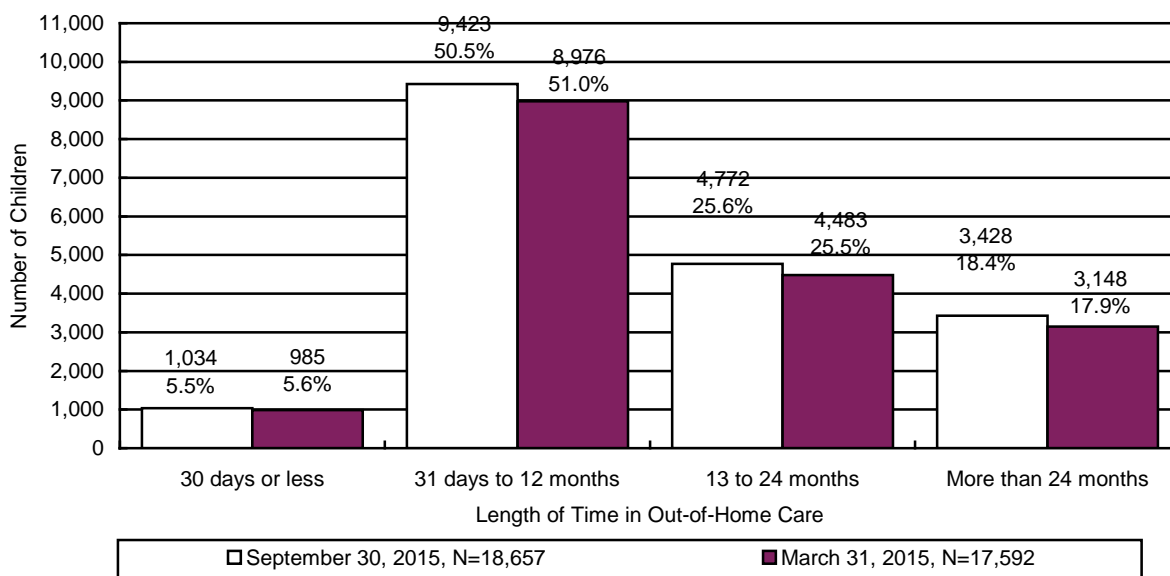
<sup>6</sup> This category includes children whose parents absconded with the child(ren) during this reporting period.

During the reporting period 878 children remained in a shelter or receiving home for more than 21 consecutive days. Chart 25 displays children by age grouping who remained in shelter more than 21 days for the current reporting period.

**CHART 25**  
**NUMBER AND PERCENTAGE OF CHILDREN IN SHELTER OR RECEIVING HOMES FOR MORE THAN 21 CONSECUTIVE DAYS BY AGE OF CHILD<sup>7</sup>**



**CHART 26**  
**THE NUMBER OF CHILDREN IN OUT-OF-HOME CARE BY LENGTH OF TIME IN CARE**



<sup>7</sup> The chart displays children who spent more than 21 days in a shelter during the period. This number differs from the other out-of-home charts as they display children in out-of-home care on the last day of the reporting period.



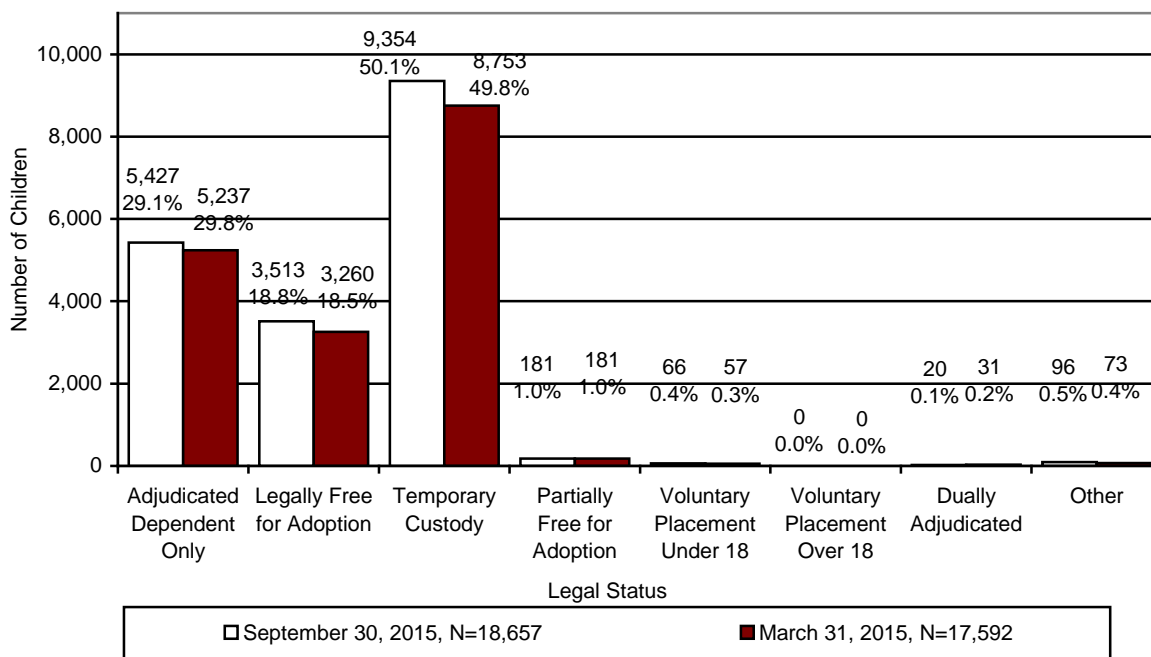
Information on the number of placements in terms of the average, median, and range for children in out-of-home care on the last day of the reporting period is shown in Table 34.

**TABLE 34  
PLACEMENT INFORMATION FOR CHILDREN IN  
OUT-OF-HOME CARE ON SEPTEMBER 30, 2015**

	Placements
<b>Average</b>	2.3
<b>Median</b>	2.0
<b>Range Minimum</b>	1
<b>Range Maximum</b>	59 <sup>8</sup>

Chart 27 displays the legal status of the children in out-of-home care for the current and prior reporting periods. As is shown by the graph, the vast majority of children in out-of-home care fall into one of three legal statuses – adjudicated dependent, legally free for adoption, and children in the Department’s temporary custody.

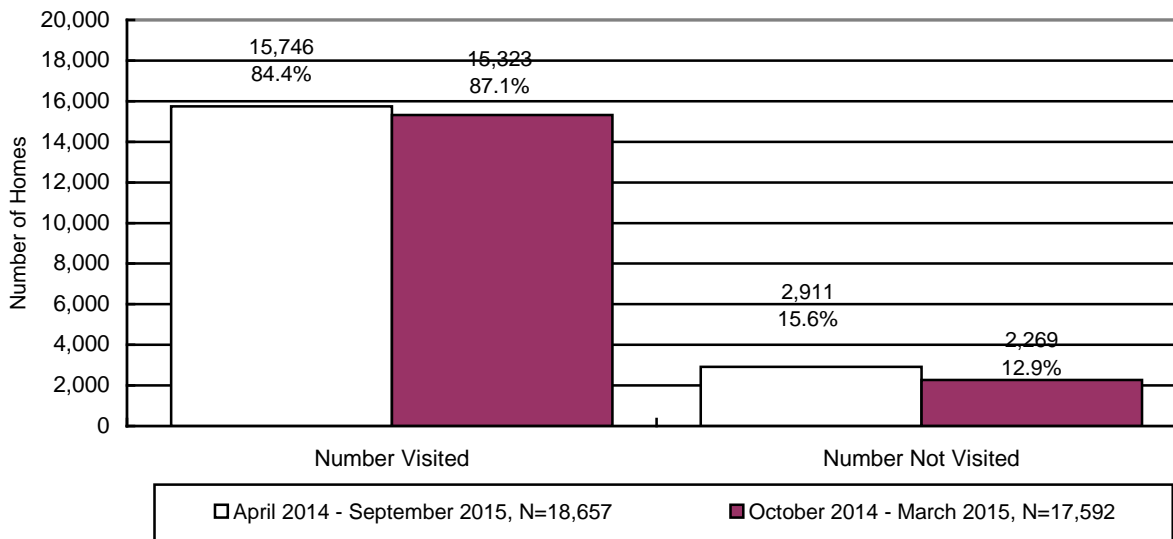
**CHART 27  
CHILDREN IN OUT-OF-HOME CARE BY LEGAL STATUS**



<sup>8</sup> Some children are so impacted by the severity of the abuse they have suffered, that they become unable to form meaningful relationships or to respond to services. These children tend to go through multiple placements with numerous individuals and agencies.

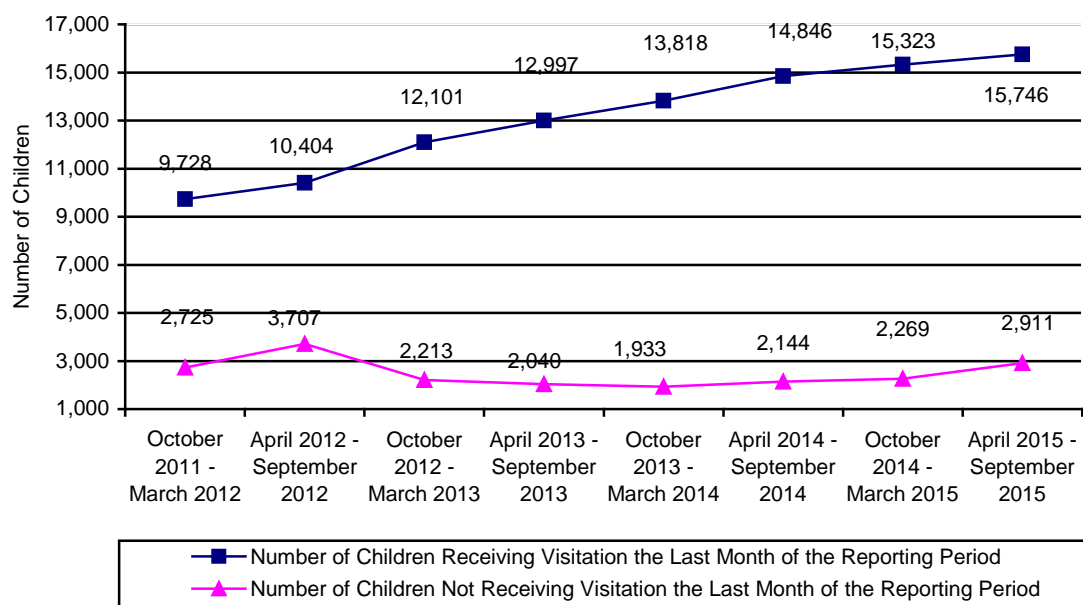
At the end of the reporting period there were 18,657 children in out-of-home care who required visitation. Of these children, visitation was documented in the automated system for 15,746 children.

**CHART 28**  
**THE NUMBER AND PERCENTAGE OF CHILDREN WHO RECEIVED THE REQUIRED VISITATION**



Department policy requires specialists to have face-to-face contact with all parents at least once a month, including any alleged parents and parents residing outside of the child’s home where the case plan goal is family reunification. During the current reporting period, there were 3,096 parents who had a child with the case plan goal of reunification. Of those parents requiring visitation, 1,576 (50.9 percent) received the required visitation. This number does not reflect attempted visitation where contact with the parent(s) did not take place.

**CHART 29**  
**NUMBER OF CHILDREN RECEIVING AND NOT RECEIVING VISITATION BY REPORTING PERIOD**



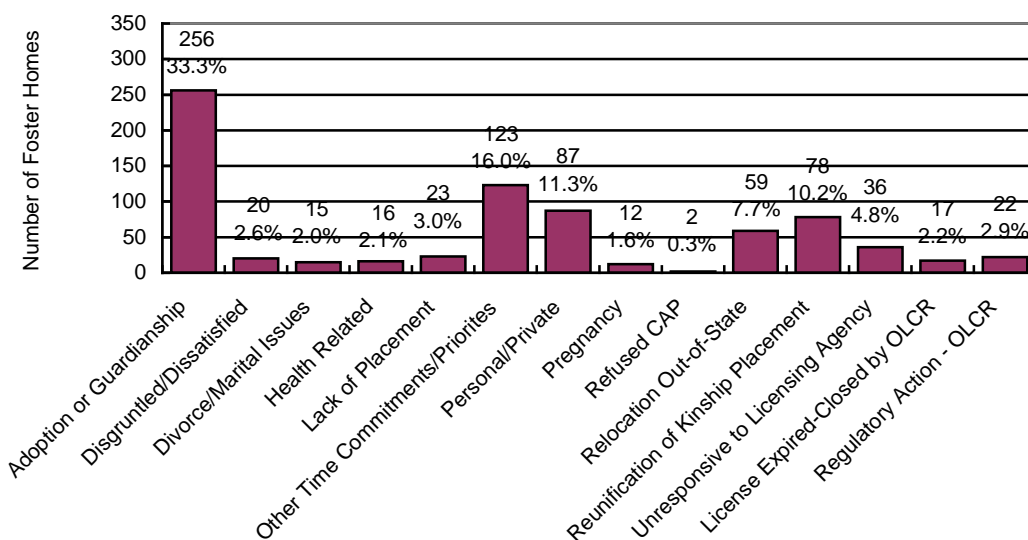
**FOSTER HOME LICENSING, CLOSURES, & VISITATION**

As of September 30, 2015, there were 4,551<sup>9</sup> foster homes licensed for a total capacity of 9,114 spaces. Of the spaces, 2,431 are reported by contractors to be unavailable for placements. Reasons for this include, but are not limited to, licensing restrictions on age, bed holds for youth in treatment or hospitalization, foster parents' need for temporary reprieve from placements and corrective action plans. In addition, 975 spaces in available foster homes were unused spaces. This occurs when a match between the available spaces and children's needs was not possible. Unused spaces may be, but are not limited to, the result of a denial by foster parents and/or contractors to the Department's request for placement due to the severity of child's needs, potential risk to other children in the home, the distance of a foster home from child's family and/or lack of unique services in the foster home's vicinity.

Licensed foster homes include family foster homes, professional family foster homes (HCTC homes), respite foster homes, receiving foster homes, and developmentally disabled homes with DCS children placed in them. Foster home licenses specify the age range, gender and maximum number of children that can be placed in a home. Foster parents, in consultation with the licensing worker, decide the type of physical, behavioral, and psychological needs of children they can effectively parent based upon their own skill level, experiences, and desires.

During the current reporting period, 774 new homes were licensed to provide foster care and 767 homes left the system. This compares to 821 new homes being licensed and 785 homes leaving the system during the prior reporting period. The following chart gives the reasons for foster home closures for the current reporting period.

**CHART 30  
REASON FOR FOSTER HOME CLOSURE FOR THE PERIOD OF  
APRIL 1, 2015 THROUGH SEPTEMBER 30, 2015**

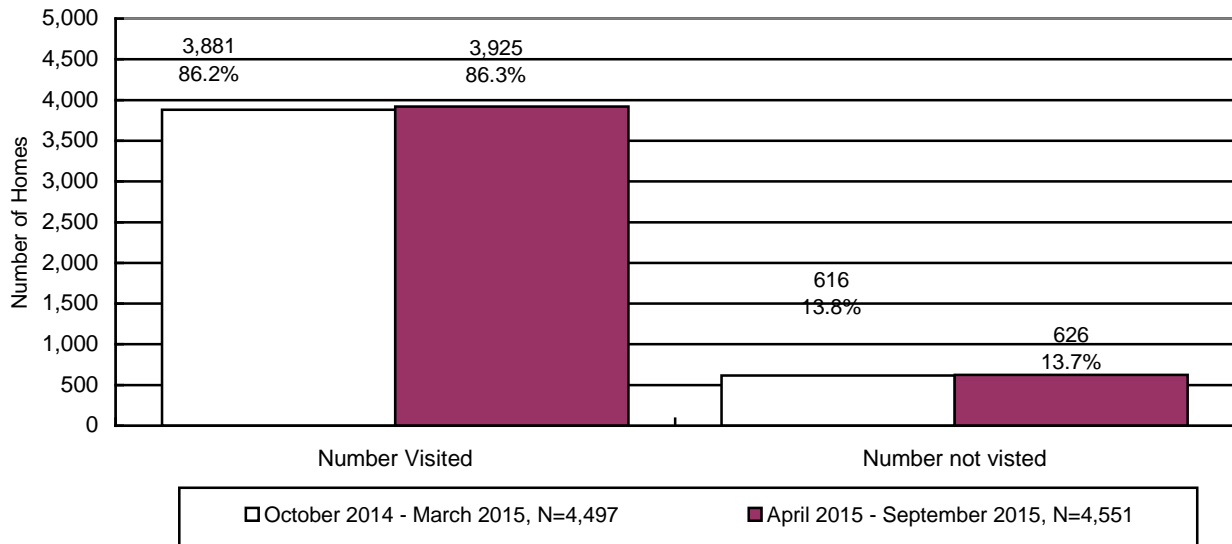


N=767

<sup>9</sup> The number of homes cited in this report differs from the number cited by the Office of Licensing, Certification & Regulation (OLCR) due to the fact that the DCS utilizes both foster homes managed through HRSS contracts as well as homes that are licensed for developmental disabilities, licensed by the tribes, etc.

Chart 31 displays the number of foster homes that received the required visitation in the current and prior reporting periods. The Department believes that more foster homes received the required visitation than is indicated in the chart below. The under-reporting of foster home visitation is attributable to the lack of automation being used in reporting the foster home visitation process. The Department recognizes this as a problem and is working to correct this issue.

**CHART 31  
THE NUMBER AND PERCENTAGE OF FOSTER HOMES WHO RECEIVED THE  
REQUIRED VISITATION\***



\*Required visitations to foster homes, for license monitoring purposes, are performed by licensing case managers and are part of the HRSS contract.

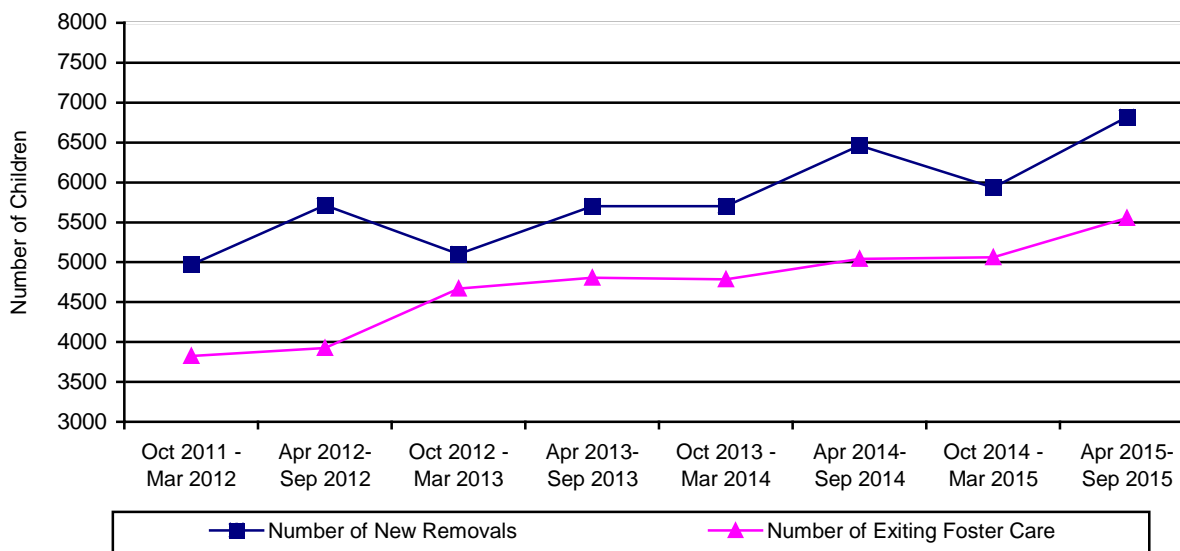
**CHILDREN EXITING OUT-OF-HOME CARE**

Table 35 below shows the history of the number of children who left the custody of the Department.

**TABLE 35  
CHILDREN EXITING OUT-OF-HOME CARE BY PERIOD**

REPORTING PERIOD	NUMBER OF CHILDREN DISCHARGED	% CHANGE OVER PRIOR PERIOD
OCTOBER 2011 – MARCH 2012	3,826	+7.1%
APRIL 2012 – SEPTEMBER 2012	3,923	+2.5%
OCTOBER 2012 – MARCH 2013	4,668	+19.0%
APRIL 2013 – SEPTEMBER 2013	4,805	+2.9%
OCTOBER 2013 – MARCH 2014	4,786	-0.4%
APRIL 2014 – SEPTEMBER 2014	5,042	+5.3%
OCTOBER 2014 – MARCH 2015	5,063	+0.4%
APRIL 2015 – SEPTEMBER 2015	5,555	+10.2%

**CHART 32  
CHILDREN ENTERING AND EXITING OUT-OF-HOME CARE BY REPORTING PERIOD**



The following nine tables depict the children who exited out-of-home care by reason. The tables display the following information: reasons the child left custody, their age, their ethnicity, the number of placements each child had, and the length of time in out-of-home care.

**TABLE 36**  
**TOTAL NUMBER OF CHILDREN EXITING DCS CUSTODY FOR THE END OF THE**  
**REPORTING PERIOD ENDING ON SEPTEMBER 30, 2015**

<b>By Age</b>	<b>Number</b>	<b>Percentage</b>
Under 1	293	5.3%
Ages 1 to 5	2,008	36.1%
Ages 6 to 8	966	17.4%
Ages 9 to 12	873	15.7%
Ages 13 to 17	992	17.9%
18 and Over	423	7.6%
<b>Total</b>	<b>5,555</b>	<b>100.0%</b>
<b>Ethnicity</b>	<b>Number</b>	<b>Percentage</b>
Caucasian	2,112	38.0%
Hispanic	1,851	33.3%
African American	782	14.1%
American Indian	446	8.0%
Asian	77	1.4%
Other	287	5.2%
<b>Total</b>	<b>5,555</b>	<b>100.0%</b>
<b>By Number of Placements</b>	<b>Number</b>	<b>Percentage</b>
One	2,961	53.3%
Two	1,308	23.6%
Three	596	10.7%
Four	285	5.1%
Five	137	2.5%
More than Five	268	4.8%
<b>Total</b>	<b>5,555</b>	<b>100.0%</b>
<b>By Length of Time in Care</b>	<b>Number</b>	<b>Percentage</b>
Less than 30 Days	885	15.9%
31 Days to 12 Months	1,759	31.7%
13 to 24 Months	1,626	29.3%
More than 24 Months	1,285	23.1%
<b>Total</b>	<b>5,555</b>	<b>100.0%</b>

	<b>Average</b>	<b>Median</b>
<b>By Age</b>	8.4	7.4
<b>By Number of Placements</b>	2.1	1.0
<b>By Months of Time in Care</b>	16.2	13.7

**TABLE 37  
NUMBER AND PERCENTAGE OF CHILDREN EXITING DCS CUSTODY  
FOR REASON OF “REUNIFICATION WITH PARENTS OR PRIMARY CARETAKER” FOR  
THE REPORTING PERIOD ENDING SEPTEMBER 30, 2015**

<b>By Age</b>	<b>Number</b>	<b>Percentage</b>
Under 1	241	7.8%
Ages 1 to 5	1,078	34.8%
Ages 6 to 8	593	19.1%
Ages 9 to 12	541	17.4%
Ages 13 to 17	645	20.8%
18 and Over	4	0.1%
<b>Total</b>	<b>3,102</b>	<b>100.0%</b>
<b>Ethnicity</b>	<b>Number</b>	<b>Percentage</b>
Caucasian	1,156	37.3%
Hispanic	1,012	32.6%
African American	468	15.1%
American Indian	209	6.7%
Asian	46	1.5%
Other	211	6.8%
<b>Total</b>	<b>3,102</b>	<b>100.0%</b>
<b>By Number of Placements</b>	<b>Number</b>	<b>Percentage</b>
One	1,833	59.1%
Two	740	23.9%
Three	289	9.3%
Four	125	4.0%
Five	57	1.8%
More than Five	58	1.9%
<b>Total</b>	<b>3,102</b>	<b>100.0%</b>
<b>By Length of Time in Care</b>	<b>Number</b>	<b>Percentage</b>
Less than 30 Days	791	25.5%
31 Days to 12 Months	1,409	45.4%
13 to 24 Months	700	22.6%
More than 24 Months	202	6.5%
<b>Total</b>	<b>3,102</b>	<b>100.0%</b>

	<b>Average</b>	<b>Median</b>
<b>By Age</b>	7.8	7.1
<b>By Number of Placements</b>	1.7	1.0
<b>By Months of Time in Care</b>	9.3	8.1

**TABLE 38  
NUMBER AND PERCENTAGE OF CHILDREN EXITING DCS CUSTODY  
FOR REASON OF “LIVING WITH OTHER RELATIVES” FOR THE REPORTING PERIOD  
ENDING SEPTEMBER 30, 2015**

<b>By Age</b>	<b>Number</b>	<b>Percentage</b>
Under 1	3	11.1%
Ages 1 to 5	6	22.2%
Ages 6 to 8	6	22.2%
Ages 9 to 12	6	22.2%
Ages 13 to 17	5	18.6%
18 and Over	1	3.7%
<b>Total</b>	<b>27</b>	<b>100.0%</b>
<b>Ethnicity</b>	<b>Number</b>	<b>Percentage</b>
Caucasian	12	44.5%
Hispanic	11	40.7%
African American	2	7.4%
American Indian	1	3.7%
Asian	0	0.0%
Other	1	3.7%
<b>Total</b>	<b>27</b>	<b>100.0%</b>
<b>By Number of Placements</b>	<b>Number</b>	<b>Percentage</b>
One	24	88.9%
Two	2	7.4%
Three	0	0.0%
Four	0	0.0%
Five	0	0.0%
More than Five	1	3.7%
<b>Total</b>	<b>27</b>	<b>100.0%</b>
<b>By Length of Time in Care</b>	<b>Number</b>	<b>Percentage</b>
Less than 30 Days	19	70.4%
31 Days to 12 Months	4	14.8%
13 to 24 Months	3	11.1%
More than 24 Months	1	3.7%
<b>Total</b>	<b>27</b>	<b>100.0%</b>

	<b>Average</b>	<b>Median</b>
<b>By Age</b>	8.4	8.1
<b>By Number of Placements</b>	1.3	1.0
<b>By Months of Time in Care</b>	4.6	0.2



**TABLE 39  
NUMBER AND PERCENTAGE OF CHILDREN EXITING DCS  
CUSTODY FOR REASON OF “ADOPTION” FOR THE REPORTING PERIOD  
ENDING SEPTEMBER 30, 2015**

<b>By Age</b>	<b>Number</b>	<b>Percentage</b>
Under 1	30	1.9%
Ages 1 to 5	848	53.9%
Ages 6 to 8	303	19.2%
Ages 9 to 12	245	15.5%
Ages 13 to 17	150	9.5%
18 and Over	0	0.0%
<b>Total</b>	<b>1,576</b>	<b>100.0%</b>
<b>Ethnicity</b>	<b>Number</b>	<b>Percentage</b>
Caucasian	629	39.9%
Hispanic	562	35.7%
African American	200	12.7%
American Indian	120	7.6%
Asian	17	1.1%
Other	48	3.0%
<b>Total</b>	<b>1,576</b>	<b>100.0%</b>
<b>By Number of Placements</b>	<b>Number</b>	<b>Percentage</b>
One	740	46.9%
Two	438	27.8%
Three	201	12.8%
Four	96	6.1%
Five	47	3.0%
More than Five	54	3.4%
<b>Total</b>	<b>1,576</b>	<b>100.0%</b>
<b>By Length of Time in Care</b>	<b>Number</b>	<b>Percentage</b>
Less than 30 Days	1	0.1%
31 Days to 12 Months	104	6.6%
13 to 24 Months	677	43.0%
More than 24 Months	794	50.3%
<b>Total</b>	<b>1,576</b>	<b>100.0%</b>

	<b>Average</b>	<b>Median</b>
<b>By Age</b>	6.2	5.1
<b>By Number of Placements</b>	2.1	2.0
<b>By Months of Time in Care</b>	25.7	24.2

**TABLE 40  
NUMBER AND PERCENTAGE OF CHILDREN EXITING DCS CUSTODY  
FOR REASON OF "GUARDIANSHIP" FOR THE REPORTING PERIOD  
ENDING SEPTEMBER 30, 2015**

<b>By Age</b>	<b>Number</b>	<b>Percentage</b>
Under 1	10	2.9%
Ages 1 to 5	54	15.7%
Ages 6 to 8	51	14.9%
Ages 9 to 12	70	20.4%
Ages 13 to 17	158	46.1%
18 and Over	0	0.0%
<b>Total</b>	<b>343</b>	<b>100.0%</b>
<b>Ethnicity</b>	<b>Number</b>	<b>Percentage</b>
Caucasian	119	34.7%
Hispanic	112	32.7%
African American	39	11.4%
American Indian	57	16.6%
Asian	8	2.3%
Other	8	2.3%
<b>Total</b>	<b>343</b>	<b>100.0%</b>
<b>By Number of Placements</b>	<b>Number</b>	<b>Percentage</b>
One	208	60.6%
Two	59	17.2%
Three	43	12.5%
Four	23	6.7%
Five	5	1.5%
More than Five	5	1.5%
<b>Total</b>	<b>343</b>	<b>100.0%</b>
<b>By Length of Time in Care</b>	<b>Number</b>	<b>Percentage</b>
Less than 30 Days	27	7.9%
31 Days to 12 Months	113	32.9%
13 to 24 Months	153	44.6%
More than 24 Months	50	14.6%
<b>Total</b>	<b>343</b>	<b>100.0%</b>

	<b>Average</b>	<b>Median</b>
<b>By Age</b>	11.1	11.9
<b>By Number of Placements</b>	1.8	1.0
<b>By Months of Time in Care</b>	15.2	14.7

**TABLE 41  
NUMBER AND PERCENTAGE OF CHILDREN EXITING DCS CUSTODY  
FOR REASONS OF “REACHING AGE OF MAJORITY” FOR THE REPORTING PERIOD  
ENDING SEPTEMBER 30, 2015**

<b>By Age</b>	<b>Number</b>	<b>Percentage</b>
Under 1	0	0.0%
Ages 1 to 5	0	0.0%
Ages 6 to 8	0	0.0%
Ages 9 to 12	0	0.0%
Ages 13 to 17	0	0.0%
18 and Over	406	100.0%
<b>Total</b>	<b>406</b>	<b>100.0%</b>
<b>Ethnicity</b>	<b>Number</b>	<b>Percentage</b>
Caucasian	167	41.2%
Hispanic	138	34.0%
African American	62	15.3%
American Indian	29	7.1%
Asian	5	1.2%
Other	5	1.2%
<b>Total</b>	<b>406</b>	<b>100.0%</b>
<b>By Number of Placements</b>	<b>Number</b>	<b>Percentage</b>
One	94	23.2%
Two	52	12.8%
Three	56	13.8%
Four	38	9.4%
Five	27	6.7%
More than Five	139	34.1%
<b>Total</b>	<b>406</b>	<b>100.0%</b>
<b>By Length of Time in Care</b>	<b>Number</b>	<b>Percentage</b>
Less than 30 Days	9	2.2%
31 Days to 12 Months	95	23.4%
13 to 24 Months	78	19.2%
More than 24 Months	224	55.2%
<b>Total</b>	<b>406</b>	<b>100.0%</b>

	<b>Average</b>	<b>Median</b>
<b>By Age</b>	18.7	18.1
<b>By Number of Placements</b>	5.3	4.0
<b>By Months of Time in Care</b>	35.4	27.2

**TABLE 42  
NUMBER AND PERCENTAGE OF CHILDREN EXITING DCS CUSTODY  
FOR REASON OF “TRANSFER TO ANOTHER AGENCY” FOR THE REPORTING PERIOD  
ENDING SEPTEMBER 30, 2015**

<b>By Age</b>	<b>Number</b>	<b>Percentage</b>
Under 1	6	9.7%
Ages 1 to 5	22	35.5%
Ages 6 to 8	13	21.0%
Ages 9 to 12	10	16.1%
Ages 13 to 17	10	16.1%
18 and Over	1	1.6%
<b>Total</b>	<b>62</b>	<b>100.0%</b>
<b>Ethnicity</b>	<b>Number</b>	<b>Percentage</b>
Caucasian	14	22.6%
Hispanic	7	11.3%
African American	5	8.1%
American Indian	28	45.1%
Asian	0	0.0%
Other	8	12.9%
<b>Total</b>	<b>62</b>	<b>100.0%</b>
<b>By Number of Placements</b>	<b>Number</b>	<b>Percentage</b>
One	36	58.1%
Two	15	24.2%
Three	3	4.8%
Four	2	3.2%
Five	0	0.0%
More than Five	6	9.7%
<b>Total</b>	<b>62</b>	<b>100.0%</b>
<b>By Length of Time in Care</b>	<b>Number</b>	<b>Percentage</b>
Less than 30 Days	23	37.1%
31 Days to 12 Months	21	33.9%
13 to 24 Months	9	14.5%
More than 24 Months	9	14.5%
<b>Total</b>	<b>62</b>	<b>100.0%</b>

	<b>Average</b>	<b>Median</b>
<b>By Age</b>	11.1	11.9
<b>By Number of Placements</b>	1.8	1.0
<b>By Months of Time in Care</b>	15.2	14.7

**TABLE 43  
NUMBER AND PERCENTAGE OF CHILDREN EXITING DCS CUSTODY  
FOR REASON OF “RUNAWAY” FOR THE REPORTING PERIOD  
ENDING SEPTEMBER 30, 2015**

<b>By Age</b>	<b>Number</b>	<b>Percentage</b>
Under 1	0	0.0%
Ages 1 to 5	0	0.0%
Ages 6 to 8	0	0.0%
Ages 9 to 12	1	3.0%
Ages 13 to 17	21	63.7%
18 and Over	11	33.3%
<b>Total</b>	<b>33</b>	<b>100.0%</b>
<b>Ethnicity</b>	<b>Number</b>	<b>Percentage</b>
Caucasian	13	39.3%
Hispanic	7	21.2%
African American	5	15.2%
American Indian	2	6.1%
Asian	1	3.0%
Other	5	15.2%
<b>Total</b>	<b>33</b>	<b>100.0%</b>
<b>By Number of Placements</b>	<b>Number</b>	<b>Percentage</b>
One	22	66.7%
Two	1	3.0%
Three	3	9.1%
Four	1	3.0%
Five	1	3.0%
More than Five	5	15.2%
<b>Total</b>	<b>33</b>	<b>100.0%</b>
<b>By Length of Time in Care</b>	<b>Number</b>	<b>Percentage</b>
Less than 30 Days	15	45.5%
31 Days to 12 Months	8	24.2%
13 to 24 Months	6	18.2%
More than 24 Months	4	12.1%
<b>Total</b>	<b>33</b>	<b>100.0%</b>

	<b>Average</b>	<b>Median</b>
<b>By Age</b>	17.1	17.5
<b>By Number of Placements</b>	2.7	1.0
<b>By Months of Time in Care</b>	10.0	1.3

**TABLE 44  
NUMBER AND PERCENTAGE OF CHILDREN EXITING DCS CUSTODY  
FOR REASON OF "DEATH OF CHILD" FOR THE REPORTING PERIOD ENDING  
SEPTEMBER 30, 2015**

<b>By Age</b>	<b>Number</b>	<b>Percentage</b>
Under 1	3	50.0%
Ages 1 to 5	0	0.0%
Ages 6 to 8	0	0.0%
Ages 9 to 12	0	0.0%
Ages 13 to 17	3	50.0%
18 and Over	0	0.0%
<b>Total</b>	<b>6</b>	<b>100.0%</b>
<b>Ethnicity</b>	<b>Number</b>	<b>Percentage</b>
Caucasian	2	33.3%
Hispanic	2	33.3%
African American	1	16.7%
American Indian	0	0.0%
Asian	0	0.0%
Other	1	16.7%
<b>Total</b>	<b>6</b>	<b>100.0%</b>
<b>By Number of Placements</b>	<b>Number</b>	<b>Percentage</b>
One	4	66.6%
Two	1	16.7%
Three	1	16.7%
Four	0	0.0%
Five	0	0.0%
More than Five	0	0.0%
<b>Total</b>	<b>6</b>	<b>100.0%</b>
<b>By Length of Time in Care</b>	<b>Number</b>	<b>Percentage</b>
Less than 30 Days	0	0.0%
31 Days to 12 Months	5	83.3%
13 to 24 Months	0	0.0%
More than 24 Months	1	16.7%
<b>Total</b>	<b>6</b>	<b>100.0%</b>

	<b>Average</b>	<b>Median</b>
<b>By Age</b>	8.2	7.6
<b>By Number of Placements</b>	1.5	1.0
<b>By Months of Time in Care</b>	12.4	4.6

**TABLE 45  
CHILDREN EXITING CARE FOR REASON OF DEATH BY CAUSE OF DEATH,  
PLACEMENT TYPE AT TIME OF DEATH, AND COUNTY**

COUNTY	CAUSE OF DEATH	TYPE OF PLACEMENT AT TIME OF DEATH
Maricopa	Asthma and respiratory factors	DDD Foster Home
Maricopa	Unknown; child was born premature and substance exposed	Hospital – Hacienda Health Care (skilled nursing facility)
Maricopa	Pneumonia and respiratory failure	Non relative foster home
Pima	Suicide	Runaway
Pima	Kidney failure	Hospice
Pinal	Unable to determine	Relative foster home

**TABLE 46  
NUMBER OF CHILDREN IN AN OPEN CASE WHO DIED AS A RESULT OF ALLEGED  
ABUSE AS CATEGORIZED BY THE CUSTODIAL RELATIONSHIP AND COUNTY FOR THE  
PERIOD APRIL 1, 2015 THROUGH SEPTEMBER 30, 2015**

COUNTY	BIOLOGICAL PARENT(S)	OTHER FAMILY MEMBER	ADOPTIVE PARENT(S)	FOSTER CARE PARENT(S)	OTHER OUT-OF-HOME CARE PROVIDER	TOTAL	% OF TOTAL
APACHE	0	0	0	0	0	0	0.0%
COCHISE	0	0	0	0	0	0	0.0%
COCONINO	0	0	0	0	0	0	0.0%
GILA	0	0	0	0	0	0	0.0%
GRAHAM	0	0	0	0	0	0	0.0%
GREENLEE	0	0	0	0	0	0	0.0%
LA PAZ	0	0	0	0	0	0	0.0%
MARICOPA	3	0	0	2	0	5	62.5%
MOHAVE	2	0	0	0	0	2	25.0%
NAVAJO	0	0	0	0	0	0	0.0%
PIMA	0	0	0	0	0	0	0.0%
PINAL	1	0	0	0	0	1	12.5%
SANTA CRUZ	0	0	0	0	0	0	0.0%
YAVAPAI	0	0	0	0	0	0	0.0%
YUMA	0	0	0	0	0	0	0.0%
STATEWIDE	6	0	0	2	0	8	100.0%
% OF TOTAL	75.0%	0.0%	0.0%	25.0%	0.0%	100.0%	

The number of child maltreatment deaths presented in the Semi-Annual Report is not comparable to child maltreatment deaths reported on the website by the Arizona Department of Health Services (ADHS).

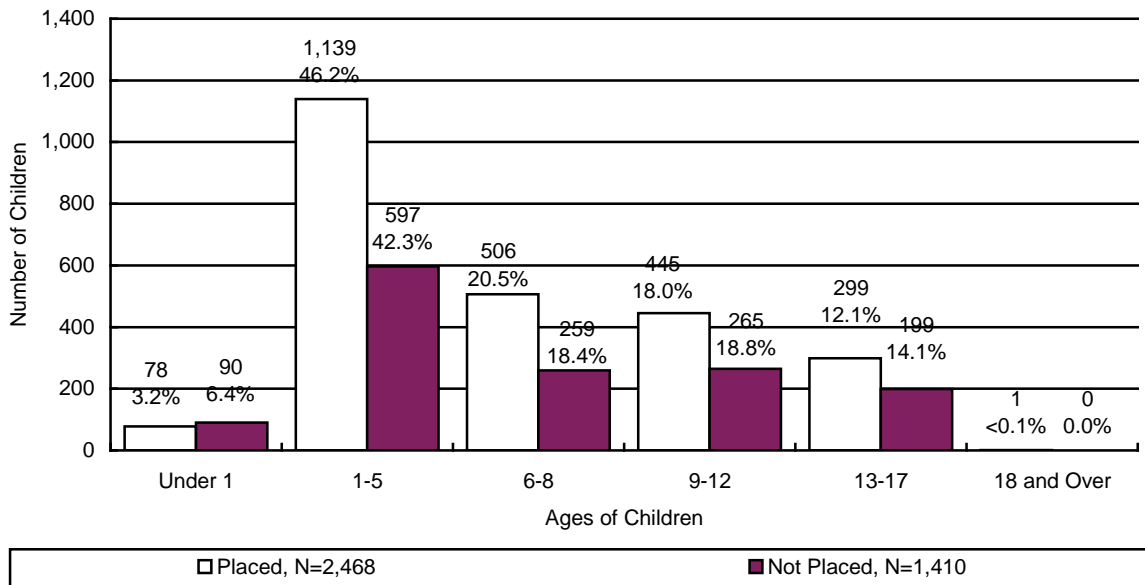
- DCS posts information in accordance with A.R.S. § 8-807 on child fatalities due to abuse or neglect by the child's parent, custodian or caregiver at: <https://dcs.az.gov/news/child-fatalities-near-fatalities-information-releases>.
- This information is posted when the information comes to DCS's attention and a final determination of the fatality due to abuse or neglect has been made by either a substantiated finding or specific criminal charges filed against a parent, guardian or caregiver for causing the fatality.
- The information that comes to DCS's attention and the determination of the fatality due to abuse or neglect may occur sometime after the actual incident for a number of reasons including a

determination by a medical professional, a medical examiner, or a criminal child abuse arrest and charge of the perpetrator.

**CHILDREN WITH CASE PLAN GOALS OF ADOPTION**

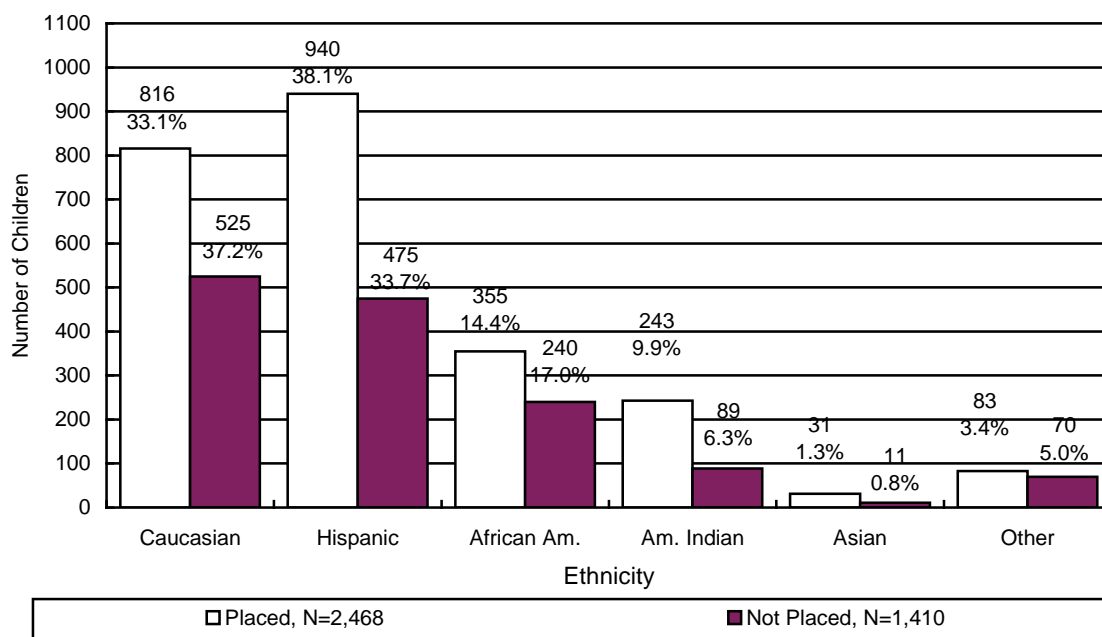
Of the 18,657 children in out-of-home care on September 30, 2015, there were 3,878 or 20.8% who had a case plan goal of adoption. Of those, 2,468 have been placed in an adoptive home and another 1,410 have not been placed. The age and ethnicity of the children with a case plan goal of adoption is displayed in Chart 33 and Chart 34.

**CHART 33  
THE PLACEMENT AND NUMBER OF CHILDREN WITH A CASE PLAN GOAL OF ADOPTION BY AGE**





**CHART 34**  
**THE PLACEMENT AND NUMBER OF CHILDREN WITH A CASE**  
**PLAN GOAL OF ADOPTION BY ETHNICITY**



**TABLE 47**  
**NUMBER OF CHILDREN WITH A PETITION FOR TERMINATION OF PARENTAL RIGHTS**  
**BY COUNTY FOR THE PERIOD APRIL 1, 2015 THROUGH SEPTEMBER 30, 2015**

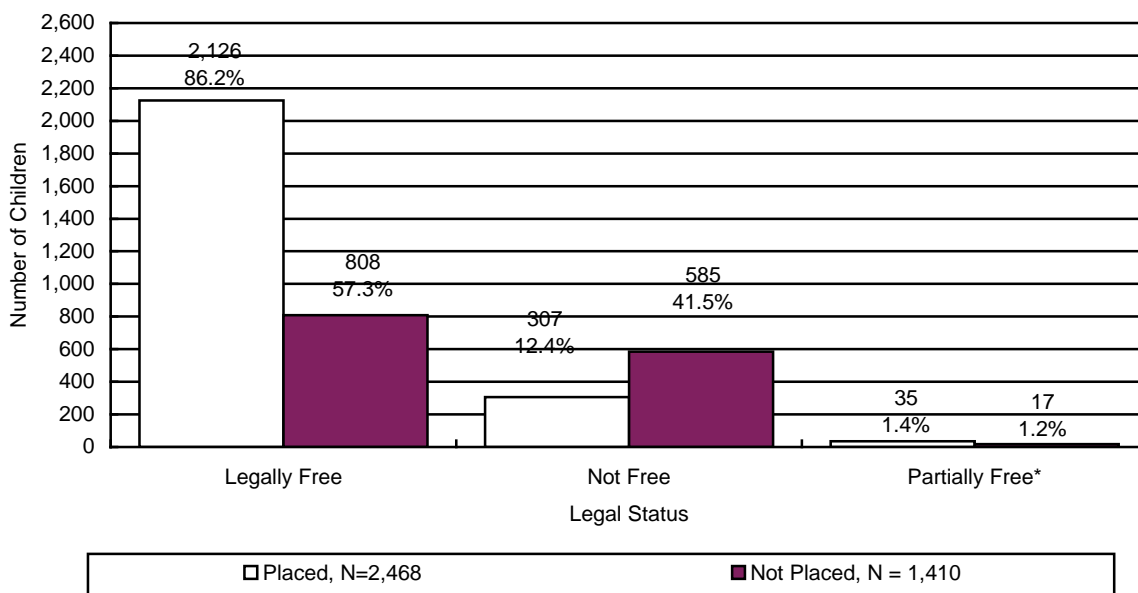
COUNTY	TERMINATION OF RIGHTS GRANTED	TERMINATION OF RIGHTS DENIED	TERMINATION OF RIGHTS GRANTED IN PART/DENIED IN PART	TERMINATION OF RIGHTS WITHDRAWN	TOTAL	% OF TOTAL
APACHE	5	0	0	0	5	0.2%
COCHISE	50	0	0	0	50	2.2%
COCONINO	20	0	0	0	20	0.9%
GILA	38	1	0	0	39	1.7%
GRAHAM	9	0	0	0	9	0.4%
GREENLEE	8	0	0	0	8	0.4%
LA PAZ	1	0	0	0	1	<0.1%
MARICOPA	965	1	0	4	970	43.2%
MOHAVE	61	0	0	0	61	2.7%
NAVAJO	31	0	0	0	31	1.4%
PIMA	635	2	0	3	640	28.5%
PINAL	269	3	0	0	272	12.1%
SANTA CRUZ	9	0	0	1	10	0.5%
YAVAPAI	47	0	0	0	47	2.1%
YUMA	84	0	0	0	84	3.7%
STATEWIDE	2,232	7	0	8	2,247	100.0%
% OF TOTAL	99.3%	0.3%	0.0%	0.4%	100.0%	

The average length of time that a child with a case plan goal of “adoption” has spent in out-of-home care is 2 years and 10 days. Information on the number of placements in terms of the average, median, and range for children with a case plan goal of adoption is shown below in Table 48.

**TABLE 48  
PLACEMENT INFORMATION FOR CHILDREN WITH A CASE PLAN GOAL OF ADOPTION**

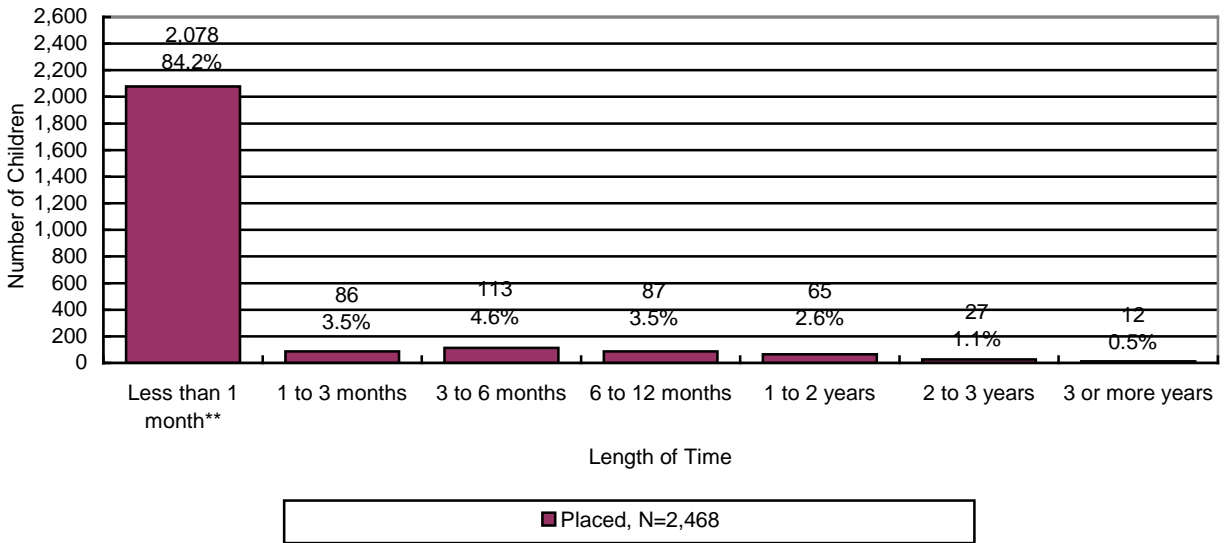
	Placements
<b>Average</b>	2.6
<b>Median</b>	2.0
<b>Range Minimum</b>	1
<b>Range Maximum</b>	40

**CHART 35  
THE PLACEMENT AND NUMBER OF CHILDREN WITH A CASE PLAN GOAL OF ADOPTION BY LEGAL STATUS**



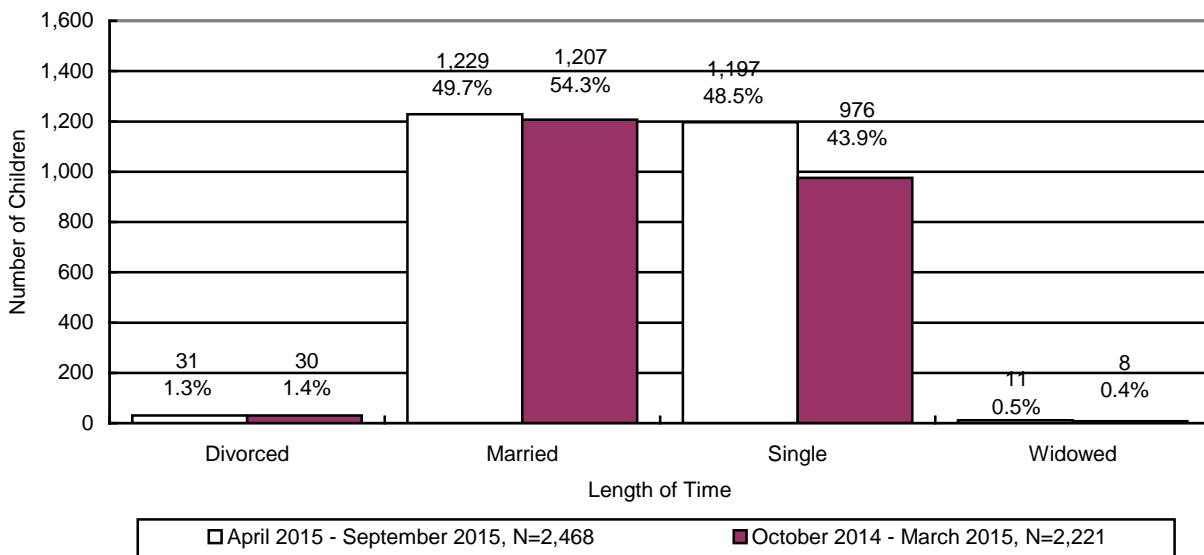
\*Partially free refers to a situation where only one of the parent’s rights has been severed.

**CHART 36**  
**THE NUMBER OF CHILDREN WITH A CASE PLAN GOAL OF ADOPTION BY LENGTH OF TIME FROM CHANGE OF CASE PLAN GOAL OF ADOPTION TO ADOPTIVE PLACEMENT**

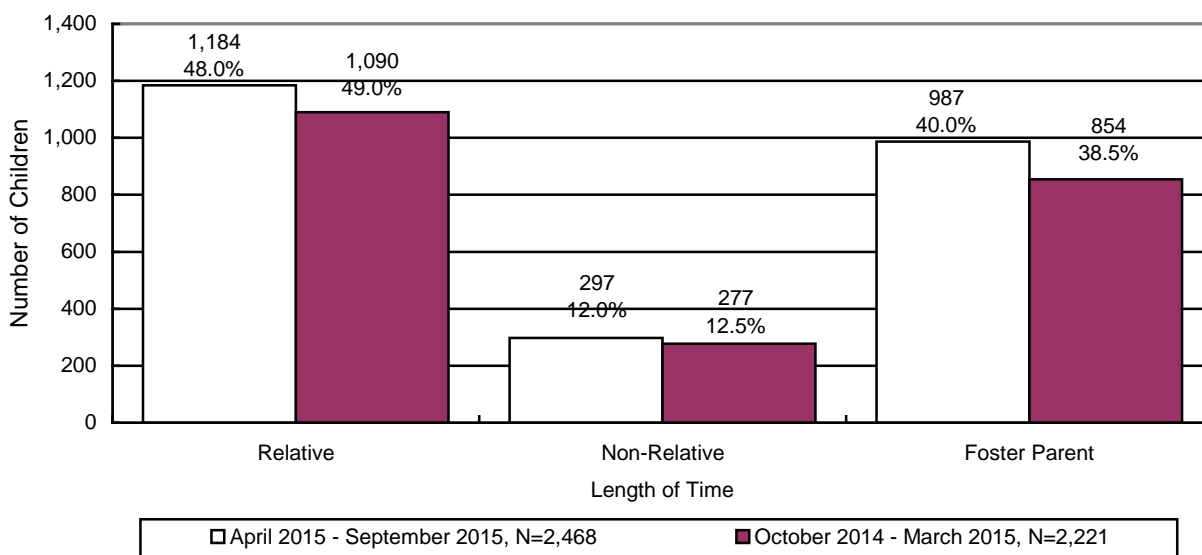


\*\*Approximately 70 percent of children are adopted by relatives or their foster parents and are already in their prospective adoptive placement at the time the case plan goal changes to adoption.

**CHART 37**  
**THE NUMBER OF CHILDREN WITH A CASE PLAN GOAL OF ADOPTION WHO WERE IN AN ADOPTIVE PLACEMENT BY THE MARITAL STATUS OF THE ADOPTIVE PARENT**



**CHART 38**  
**THE NUMBER OF CHILDREN WITH A CASE PLAN GOAL OF ADOPTION WHO WERE IN AN ADOPTIVE PLACEMENT BY THE RELATIONSHIP OF THE ADOPTIVE PARENT**



**DISRUPTIONS**

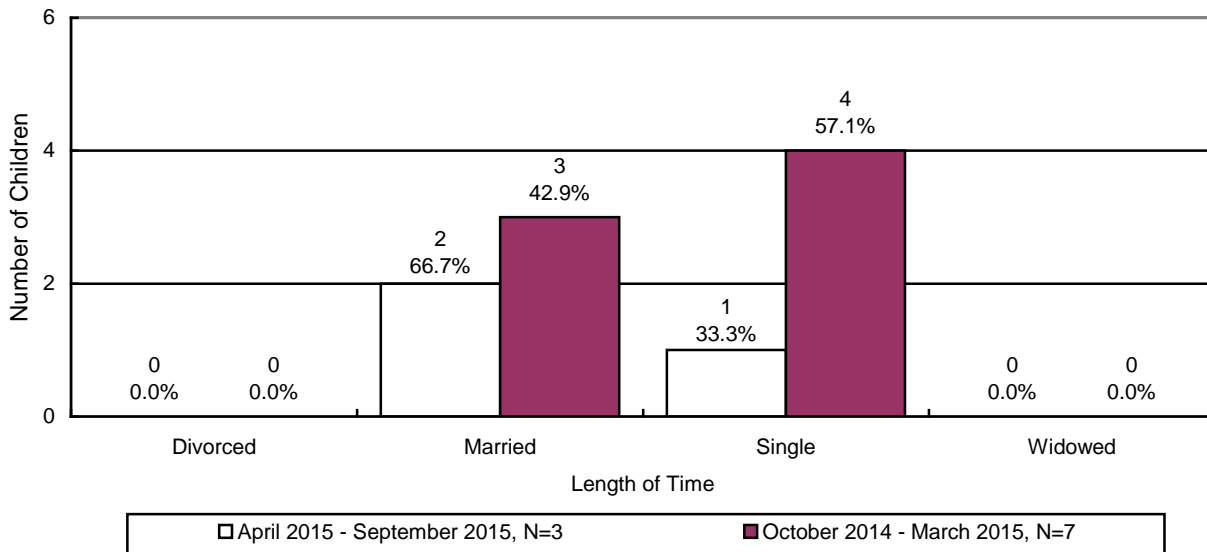
**TABLE 49**  
**THE NUMBER OF CHILDREN WITH A CASE PLAN GOAL OF ADOPTION WHO WERE IN AN ADOPTIVE PLACEMENT AND DISRUPTED BY AGE AND ETHNICITY**

By Age	Number	Percentage
Under 1	0	0.0%
Ages 1 – 5	0	0.0%
Ages 6 – 8	0	0.0%
Ages 9 – 12	0	0.0%
Ages 13 – 17	3	100.0%
18 and Over	0	0.0%
<b>Total</b>	<b>3</b>	<b>100.0%</b>

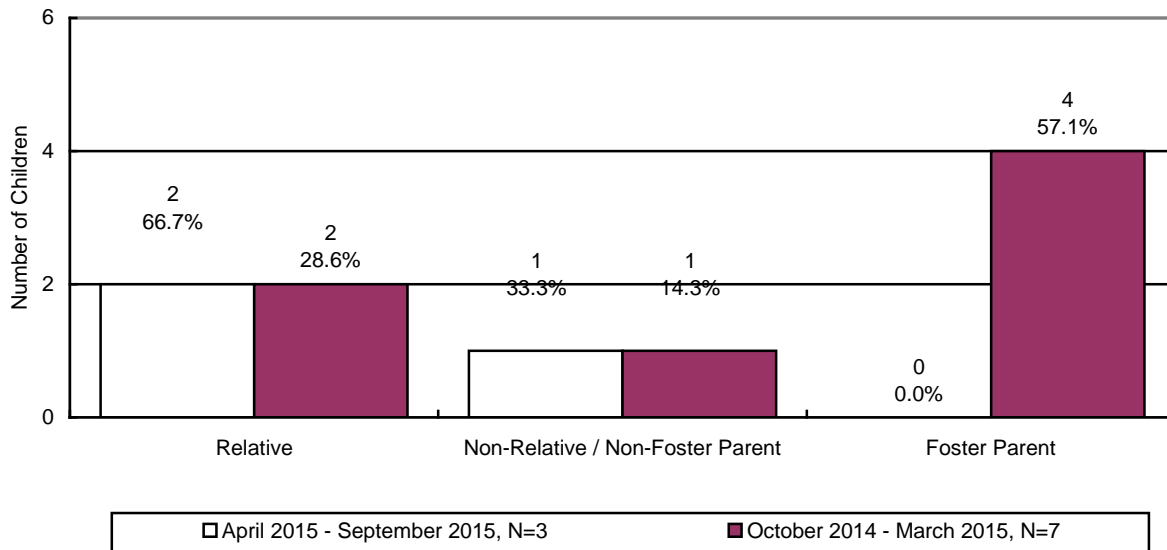
  

Ethnicity	Number	Percentage
Caucasian	1	33.3%
Hispanic	1	33.3%
African American	1	33.3%
American Indian	0	0.0%
Asian	0	0.0%
Other	0	0.0%
<b>Total</b>	<b>3</b>	<b>100.0%</b>

**CHART 39**  
**THE NUMBER OF CHILDREN WITH A CASE PLAN GOAL OF ADOPTION WHO WERE IN AN ADOPTIVE PLACEMENT AND DISRUPTED BY THE MARITAL STATUS OF THE ADOPTIVE PARENT**

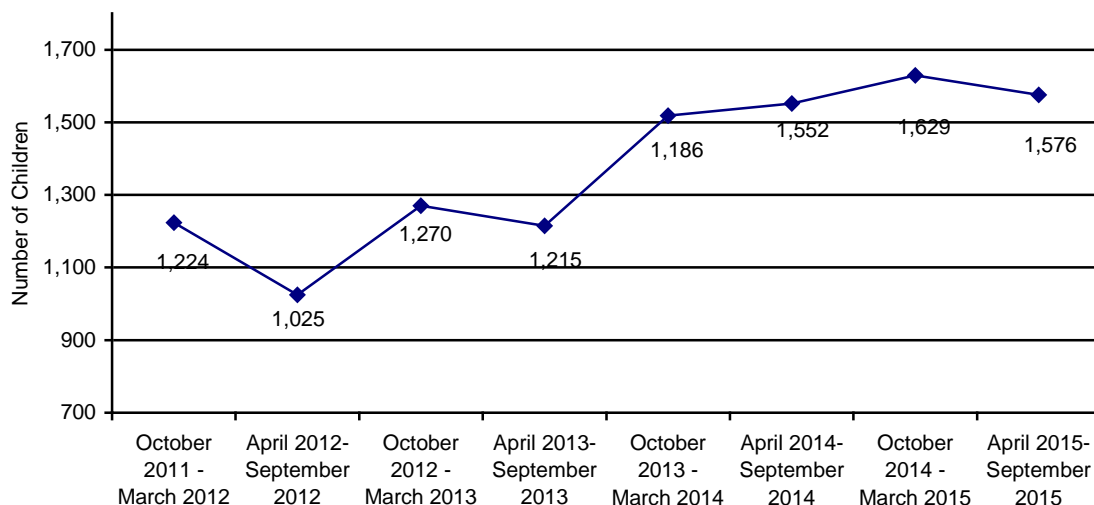


**CHART 40**  
**THE NUMBER OF CHILDREN WITH A CASE PLAN GOAL OF ADOPTION WHO WERE IN AN ADOPTIVE PLACEMENT AND DISRUPTED BY THE RELATIONSHIP OF THE ADOPTIVE PARENT**



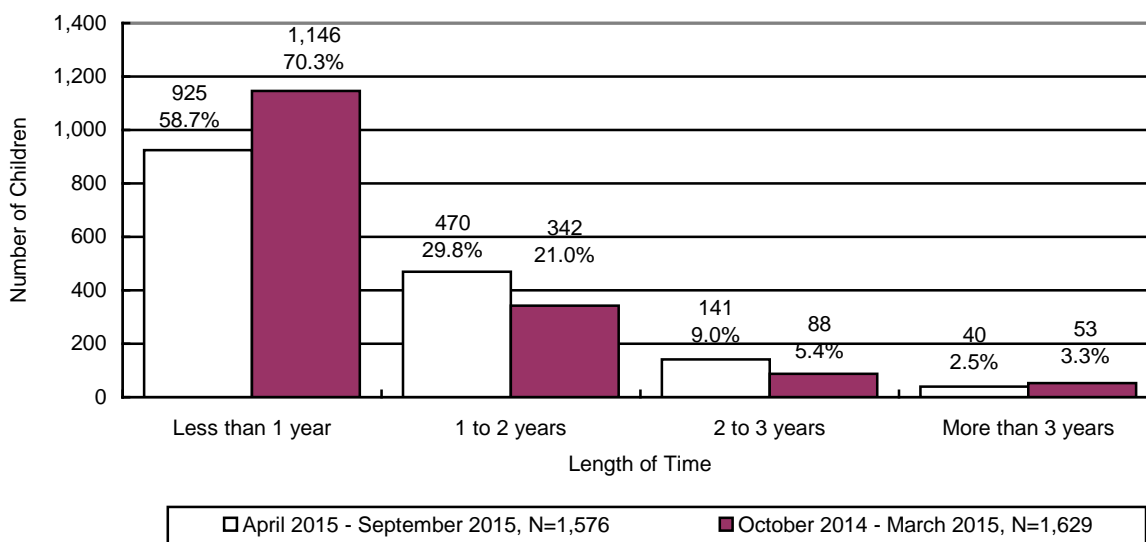
**ADOPTIVE SERVICES**

**CHART 41  
THE NUMBER OF CHILDREN WITH A FINALIZED ADOPTION**



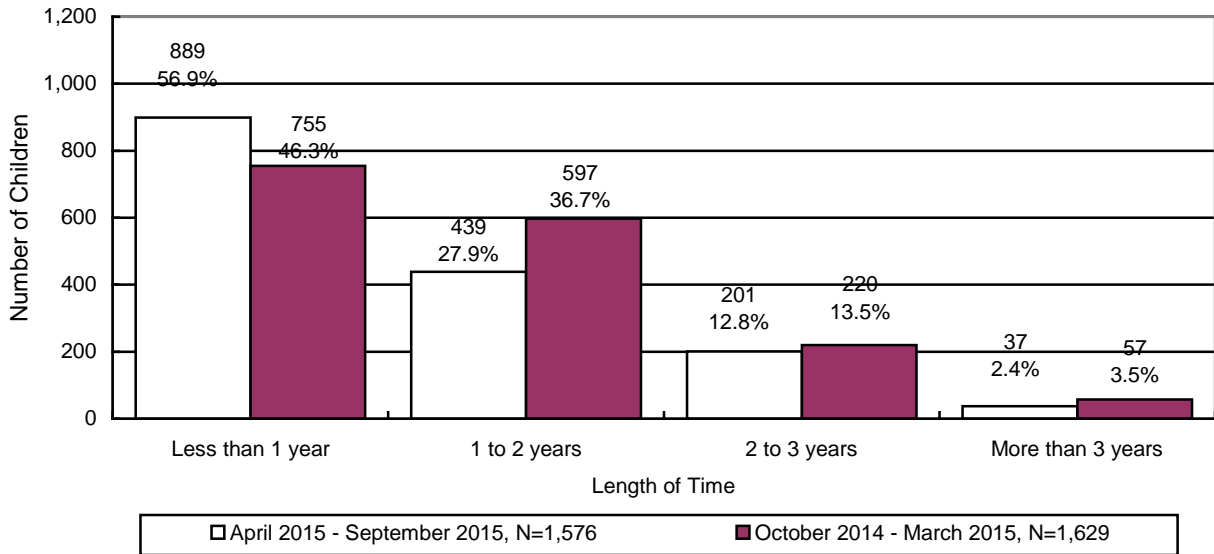
There were 1,576 children with a finalized adoption during the reporting period. Chart 42 displays the number of children with a finalized adoption during the reporting period by the average length of time in out-of-home placement before adoptive placement.

**CHART 42  
THE NUMBER AND PERCENTAGE OF CHILDREN WITH A FINALIZED ADOPTION BY AVERAGE LENGTH OF TIME IN OUT-OF-HOME PLACEMENT BEFORE ADOPTIVE PLACEMENT**

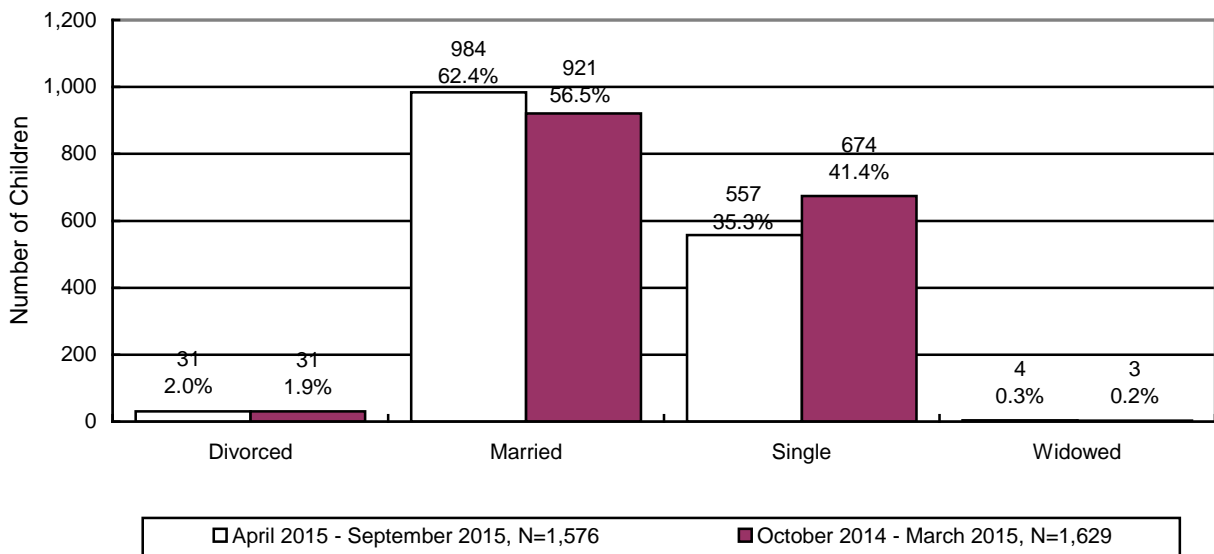


The chart below displays the number of children with a finalized adoption by average length of time in adoptive placement before the final order of adoption.

**CHART 43**  
**THE NUMBER AND PERCENTAGE OF CHILDREN WITH A FINALIZED ADOPTION BY AVERAGE LENGTH OF TIME IN ADOPTIVE PLACEMENT BEFORE THE FINAL ORDER OF ADOPTION**



**CHART 44**  
**THE NUMBER OF CHILDREN WITH A FINALIZED ADOPTION BY THE MARITAL STATUS OF THE ADOPTIVE PARENT**



**CHART 45**  
**THE NUMBER OF CHILDREN WITH A FINALIZED ADOPTION BY THE RELATIONSHIP**  
**OF THE ADOPTIVE PARENT TO THE CHILD**

