

**Child Welfare in Arizona**  
**Semi-Annual Report Update**  
**August 8, 2013**



---

DEPARTMENT OF ECONOMIC SECURITY

---

*Your Partner For A Stronger Arizona*

# Child Welfare Trends Update

## Overview

WHERE WE'VE BEEN

WHERE WE ARE TODAY

WHERE WE'RE HEADED



# Past: Where have we been?

Data Element	Where have we been?	
<b>HOTLINE REPORTS</b>	FFY09 = 33,228 FFY10 = 34,178 FFY11 = 37,252	↑ 950 ↑ 3,074
<b>INVESTIGATION (Reports Assigned for Investigation)</b>	FFY09 = 32,316 FFY10 = 33,455 FFY11 = 36,623	↑ 1,139 ↑ 3,168
<b>CHILDREN IN OUT-OF-HOME CARE*</b>	FFY09 = 10,112 FFY10 = 10,514 FFY11 = 11,535	↑ 402 ↑ 1,021
<b>CHILDREN REUNIFIED</b>	FFY09 = 3,946 FFY10 = 3,621 FFY11 = 3,552	↓ 325 ↓ 69
<b>LICENSED FOSTER HOMES*</b>	FFY09 = 3,954 FFY10 = 3,747 FFY11 = 3,496	↓ 207 ↓ 251
<b>CHILDREN ADOPTED*</b>	FFY09 = 1,655 FFY10 = 2,025 FFY11 = 2,264	↑ 370 ↑ 239

\*Count as of last day of federal fiscal year



# Present: Where are we today?

Data Element (Represents 6 Months of FFY 13)	Where we are today...	
<b>HOTLINE REPORTS</b>	FFY12 = 42,091 FFY12 (Oct-Mar) = 20,466 FFY13 (Oct-Mar) = 22,161	↑ 4,839 ↑ 1,695 (Oct-Mar comparison)
<b>INVESTIGATION</b> (Reports Assigned for Investigation)	FFY12 = 39,687 FFY12 (Oct-Mar) = 19,274 FFY13 (Oct-Mar) = 20,253	↑ 3,064 ↑ 979 (Oct-Mar comparison)
<b>CHILDREN IN OUT-OF-HOME CARE*</b>	FFY12 = 14,111 FFY12 (March) = 12,453 FFY13 (March) = 14,314	↑ 2,576 ↑ 1,861 (March comparison)
<b>CHILDREN REUNIFIED</b>	FFY12 = 3,900 FFY12 (Oct-Mar) = 1,848 FFY13 (Oct-Mar) = 2,534	↑ 348 ↑ 686 (Oct-Mar comparison)
<b>LICENSED FOSTER HOMES*</b>	FFY12 = 3,748 FFY12 (March) = 3,480 FFY13 (March) = 3,516	↑ 252 ↑ 36 (March comparison)
<b>CHILDREN ADOPTED</b>	FFY12 = 2,249 FFY12 (Oct-Mar) = 1,224 FFY13 (Oct-Mar) = 1,270	↓ 15 ↑ 46 (Oct-Mar comparison)
*Count as of last day of federal fiscal year		



# Future: Where are we headed?

## **The Challenge:**

The number of children entering foster care continues to rise. Currently, there are 14,314 children in foster care. Foster care is a response, not a solution. How do we reduce this number?

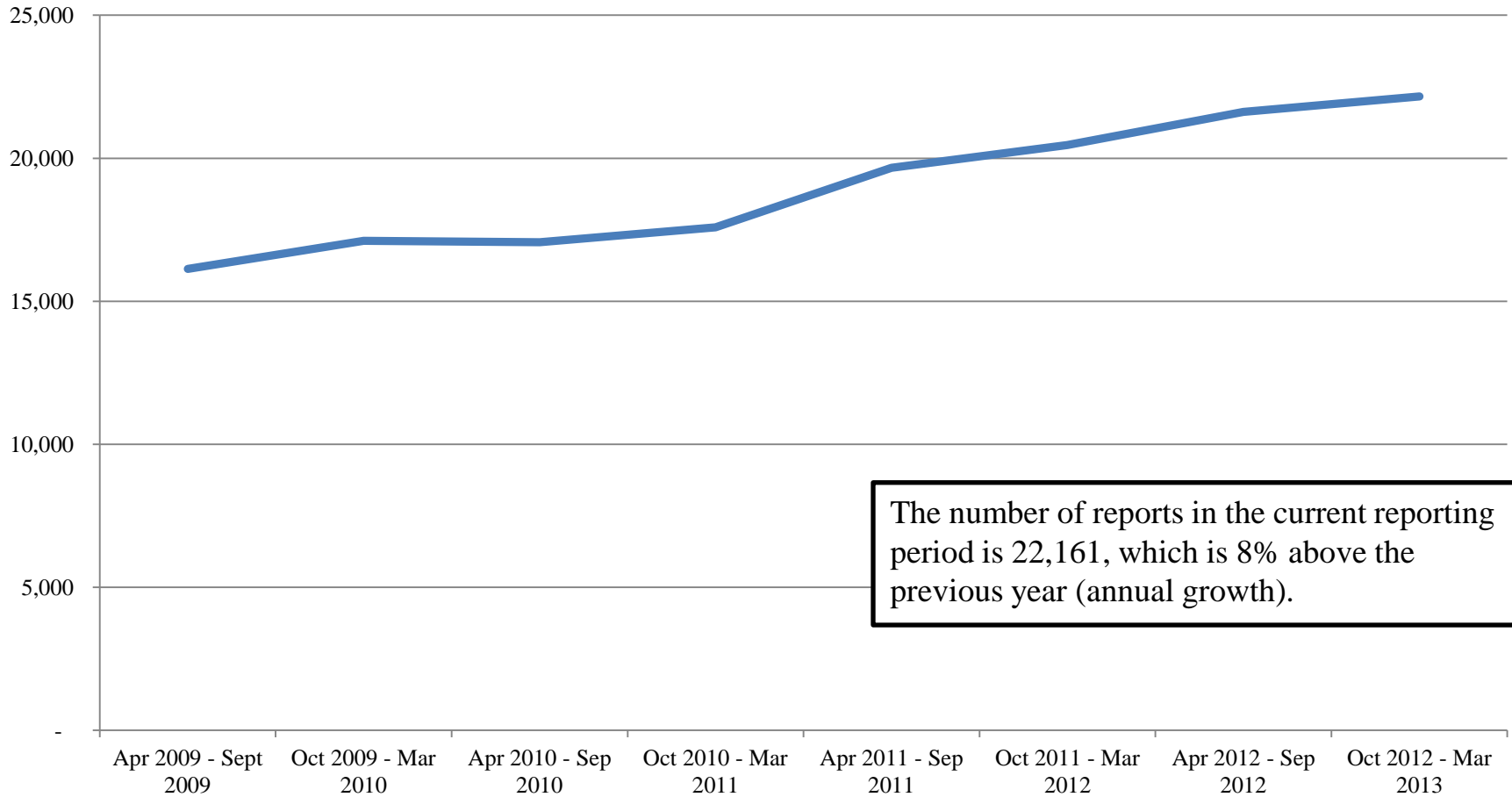
## **Goals:**

- We are currently beginning the planning stages of moving the Division forward into **Phase II: Program Development and Practice Improvement.**
- The goals are to:
  - Create more long-term sustainable changes that will transform the child welfare system to improve outcomes for children and families.
  - Change the culture of the child welfare system.
  - Continue to focus on strengthening the workforce and professional development of staff so that we have the best child welfare staff in the country.



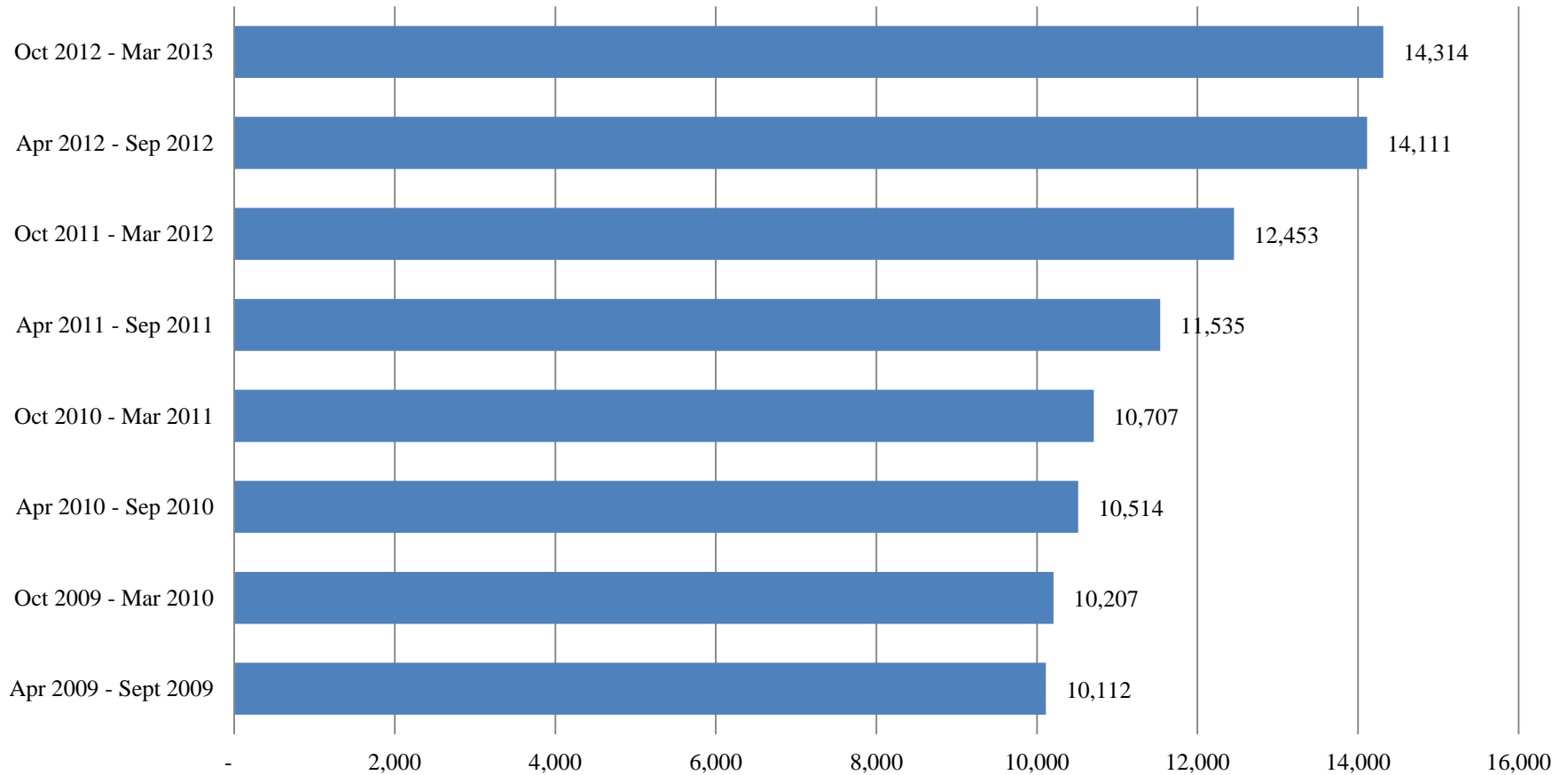
# Semi-Annual Child Welfare Report – Key Statistics

## CPS Reports Received



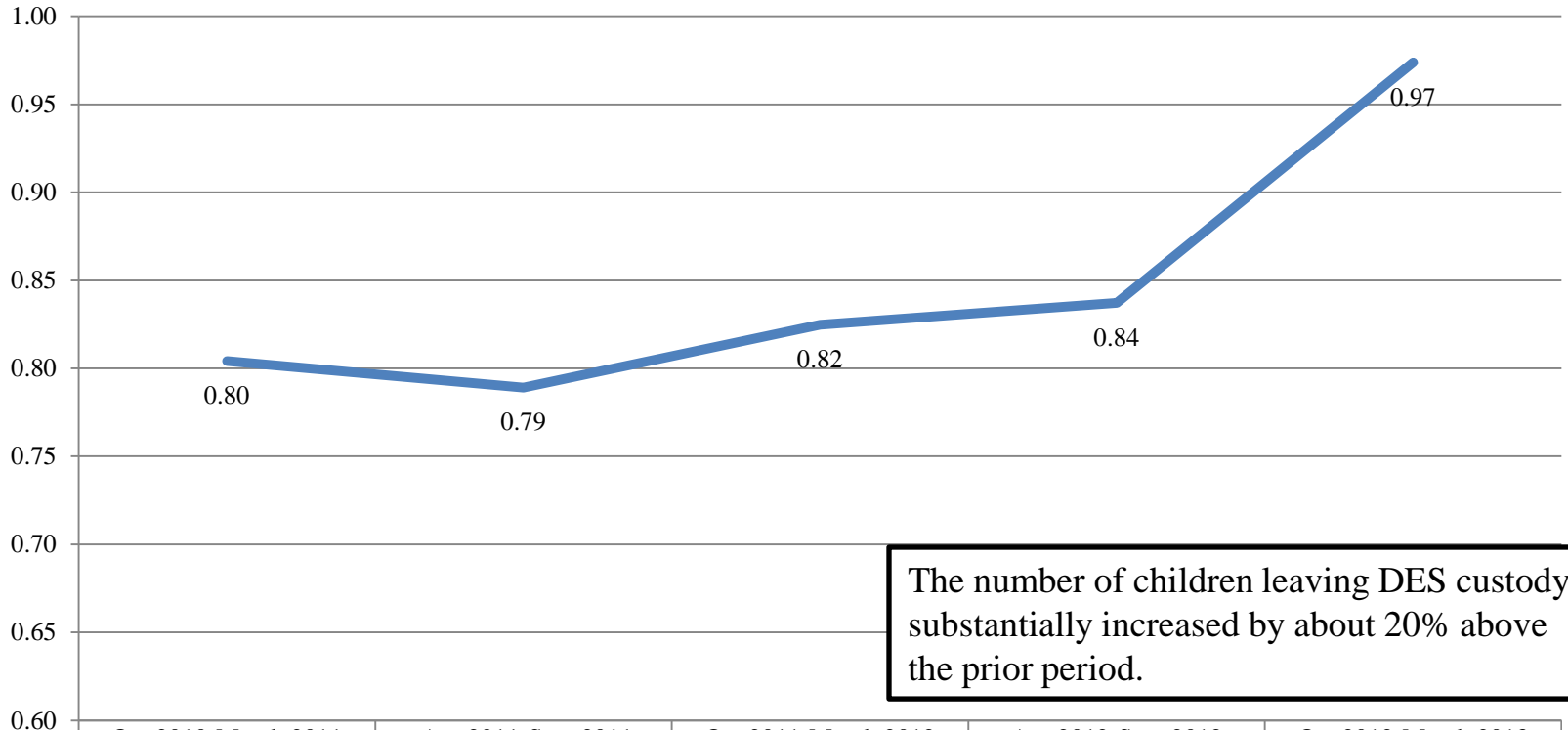
# Semi-Annual Child Welfare Report – Key Statistics

## Children in Out-of-Home Care



# Semi-Annual Child Welfare Report – Key Statistics

## Exits per Caseworker



	Oct 2010-March 2011	Apr 2011-Sept 2011	Oct 2011-March 2012	Apr 2012-Sept 2012	Oct 2012-March 2013
Exits/Caseworker	0.80	0.79	0.82	0.84	0.97
Children Entering	3,978	4,531	4,968	5,716	5,101
Children Leaving	3,649	3,574	3,826	3,923	4,668

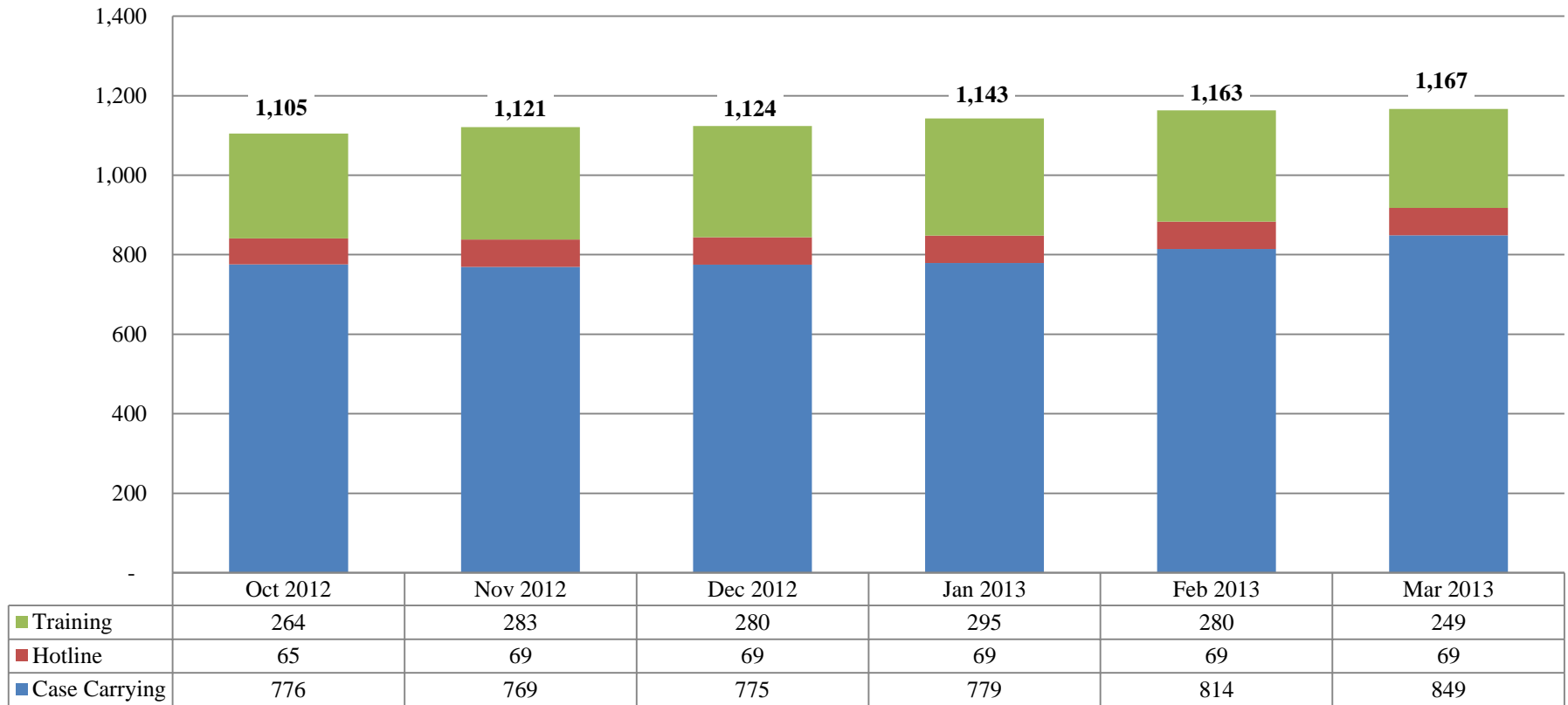




# CPS Specialist Staff Recruitment – 2013 Results

**Recruiting process is more efficient. Additional staffing has resulted in more CPS Specialists hired and fewer vacancies.**

## Total CPS Specialists



## Key Objective: Continuous Improvements

- ✓ Continue to hire for the CPS IV Series Classification to create a career ladder for CPS Specialists; Currently hired 64 CPS IVs statewide.
- ✓ Additional staffing has resulted in:
  - ✓ **Increase in the number of reports investigated and closed** (from 9,168 to 10,923);
  - ✓ **Increased number of children leaving CPS custody** (3,923 to 4,668);
  - ✓ **Increase in the number of children receiving visitation** (from 73.7 to 84.5%);
  - ✓ **Number of foster homes receiving visitation is at a record high** (number *not* receiving visits declined to 7.3% compared to 17.4 and 20.1% in last two reporting periods).
- ✓ Improvements at the Hotline have resulted in more efficient processing of intake calls and a new system for mandatory reporters.



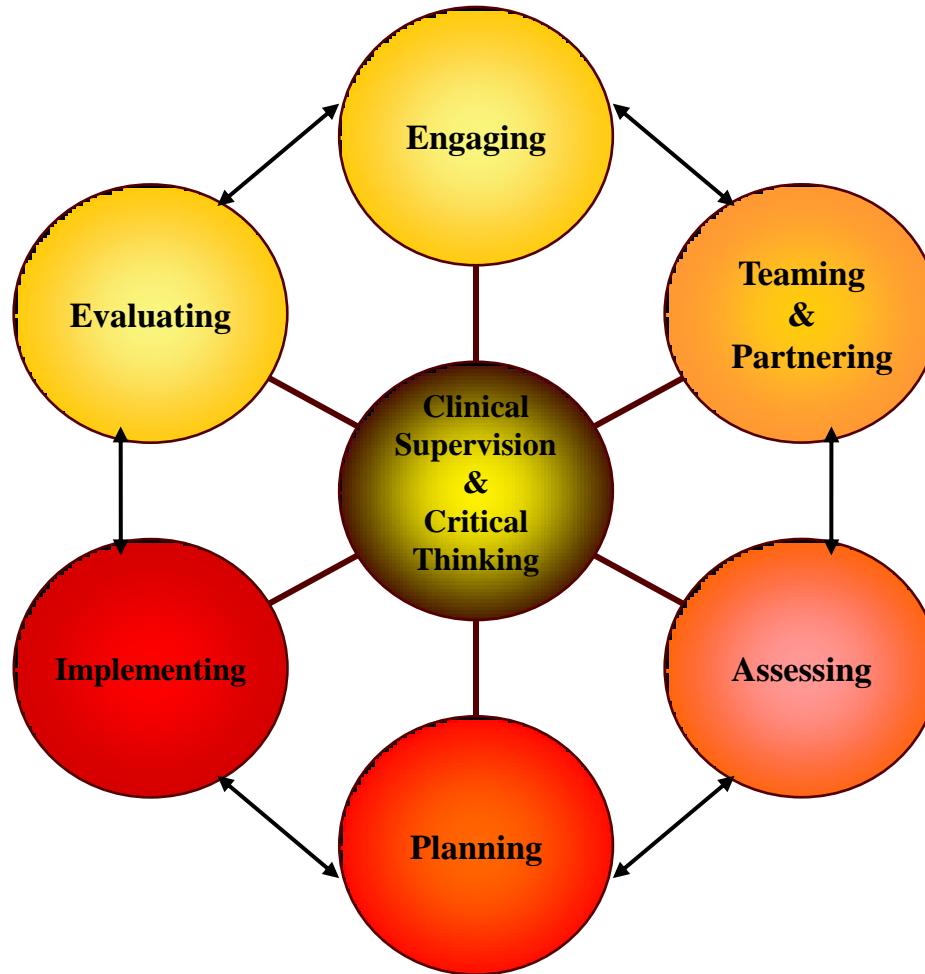
## Key Objective: Process Improvements

- ✓ Implemented technological and process improvements to streamline the Continuous Child Safety & Risk Assessment and Case Plan and improve family engagement through these processes
- ✓ Technological improvements underway to streamline Court Report documents
- ✓ Clinical supervision is a driving practice to improve decision making
- ✓ Address improvements to streamline the process for children who are ready to be adopted to achieve permanency quicker
- ✓ Fall Supervisor Learning Summit for all Supervisors and above to address “Moving the Needle” through data collection, analysis and family engagement
- ✓ Continuous work with ASU partnership to assess CPS case manager and supervisor core training and providing advanced learning opportunities for all CPS staff



# Arizona's Child Welfare Practice Model

**Arizona's Child Welfare Practice Model** articulates and documents the values and best practices that drive the work we do with children, youth and families.



It provides a structure for thinking about the work we do every day and guides the development of policy and practice guidance.



# Where are we headed?

## Phase II: Program Development and Practice Improvement

### Outcomes:

- Creation of programs and re-engineering of services that keep children safe within their own families, preventing maltreatment and the secondary trauma often associated with foster care.
- Creation of programs that are more inclusive and less adversarial for families and communities.
- Creation of programs and services that assist families to sustain safety, stability and self-sufficiency.

### How? Key Practice Model Elements:

- **Continuous improvement** across our practice
- **Technology and other critical supports** for the field
- Focused attention with the CPS workforce on **family engagement**
- Enhance Arizona's **service array** for children and families to meet their unique needs
- **Responding** to reports of abuse and neglect **differently**



# Future Vision

## Phase II: Program Development and Practice Improvement

### Child Welfare Demonstration Projects (IV-E Waiver):

Arizona's proposal will seek to focus on two strategies and the use of evidence based practices to increase family engagement. The two strategies are: **development of a differential response system** and **enhancement of Arizona's children and family support service array**.

#### *Why the IV-E Waiver for Arizona?*

- Arizona must have the ability to invest its existing federal resources in the most effective and innovative way possible, with an approach aimed at strengthening families and improving the lives of children
- In order to help fund some of these strategies, the IV-E waiver will be one mechanism to assist the Division in Phase II of Program Development and Practice Improvement and allow us to collectively approach our goals, objectives and strategies in a more meaningful way
- The waiver would provide Arizona with several opportunities:
  - Provides a structure/program that allows children to remain safely in their own homes
  - Enhances the ability to access resources and supports outside of child welfare funding stream
  - Allows for our staff to do social work with families
  - Supports implementation of these programs successfully in a sustainable manner



# Future Vision – Differential Response

## Defining Differential Response

- Differential response is a CPS practice that allows for more than one method of initial response to reports of child abuse and neglect. While approaches vary from state to state, differential response generally uses two or more "tracks" or paths of response to reports of child abuse and neglect.

## Common Characteristics of Differential Response

- Assessment Focused • Individualized Approach • Family Centered • Community Oriented
- Flexible • Selective

## Goal of Differential Response

To engage parents, extended family and community partners in identifying challenges and participating in services and supports that address a family's unique needs.

## Additional Goals

- Prevent removal
- Reduce repeat maltreatment and repeat engagement with CPS
- Address family challenges early on through a more supportive role
- Improve community responsiveness to families in need



# Future Vision: Enhanced Service Array

## Why Enhanced Service Array?

Services support the programs that support children and families. In all areas of the child welfare system, we need to ask ourselves, "Is this the best we can do for children and families?"

We believe that we can do better. There is a need to re-engineer the existing service array to improve and build upon the evidence-based programs/practices for community based family and parenting supports. This strategy was selected to address many of the challenges in the current delivery system.

## Addressing the Need:

- Expand supports and services to increase parental motivation and engagement in the protection and well-being of their children.
- Lack of access to appropriate services that meet families' unique needs or address circumstances of poverty and the limited availability of services in certain geographic areas.
- To successfully support a differential response system, a new service array will need to be developed that will focus on child safety and one that will be outcome driven.





## Operation AZ Kids (AZK)

*What can you do to help improve safety, permanency and well-being for children and families?*

**Arizona's kids are at the center of everything we do**



**Safety, permanency and well-being for Arizona's children must be community-based and community-driven**

## Operation AZ Kids Requires Your Help

- Arizona's child welfare system must be community-based and community-driven.
- The public child welfare agency is but ONE component of Arizona's child welfare system.
- The public agency must focus the resources it has to address investigations and known abuse.
- Most families do not want or need the state involved in their lives.
- Arizona requires the entire community to focus on preventing child abuse.
- When the community is successful, over time, the state could have more resources to dedicate to prevention as well.
- **Ask yourself and your community/boards/organizations: *What am I doing to help improve safety, permanency and well-being for children and families?***



# Operation AZ Kids

***What can you do to help improve safety, permanency and well-being for children and families?***

Child Welfare Component	Child Welfare System Partners	Faith-Based Community Partners	Child Welfare Advocates	Child Welfare Service Providers	Media
Hotline					
Intake/ Investigation					
OOH					
Reunification					
Family Foster Homes					
Adoption					

***In order to be successful, safety, permanency and well-being for Arizona's children must be community-based and community-driven.***

